

Data Path : Z:\pestpcbsrv\HPCHEM1\ECD\_O\Data\P0080222\  
 Data File : P0088535.D  
 Signal(s) : Signal #1: ECD1A.ch Signal #2: ECD2B.ch  
 Acq On : 02 Aug 2022 16:18  
 Operator : YP/AJ  
 Sample : AR1248CCC500  
 Misc :  
 ALS Vial : 5 Sample Multiplier: 1

**Instrument :**  
 ECD\_O  
**ClientSampleId :**  
 AR1248CCC500

Integration File signal 1: autoint1.e  
 Integration File signal 2: autoint2.e  
 Quant Time: Aug 03 00:05:01 2022  
 Quant Method : Z:\pestpcbsrv\HPCHEM1\ECD\_O\methods\P0071422.M  
 Quant Title : GC EXTRACTABLES  
 QLast Update : Tue Jul 26 11:20:17 2022  
 Response via : Initial Calibration  
 Integrator: ChemStation

Volume Inj. : 2 µl  
 Signal #1 Phase : ZB-MR1 Signal #2 Phase: ZB-MR2  
 Signal #1 Info : 30Mx0.32mmx 0.50µ Signal #2 Info : 30M x 0.32mm x 0.25µm

Compound	RT#1	RT#2	Resp#1	Resp#2	ng/ml	ng/ml
-----						
System Monitoring Compounds						
1) SA Tetrachlo...	4.444	3.604	135.9E6	52596601	53.274	55.747
2) SA Decachlor...	10.287	8.595	89921616	54137107	42.342	51.804
Target Compounds						
21) L5 AR-1248-1	5.618	4.678	26503713	11963930	496.061	522.299
22) L5 AR-1248-2	5.894	4.914	36708361	17342757	472.437	514.127
23) L5 AR-1248-3	6.099	4.956	39053383	17954640	466.534	516.631
24) L5 AR-1248-4	6.505	5.127	42163760	22048780	458.763	526.665
25) L5 AR-1248-5	6.544	5.519	41194137	19357197	458.036	537.260
-----						

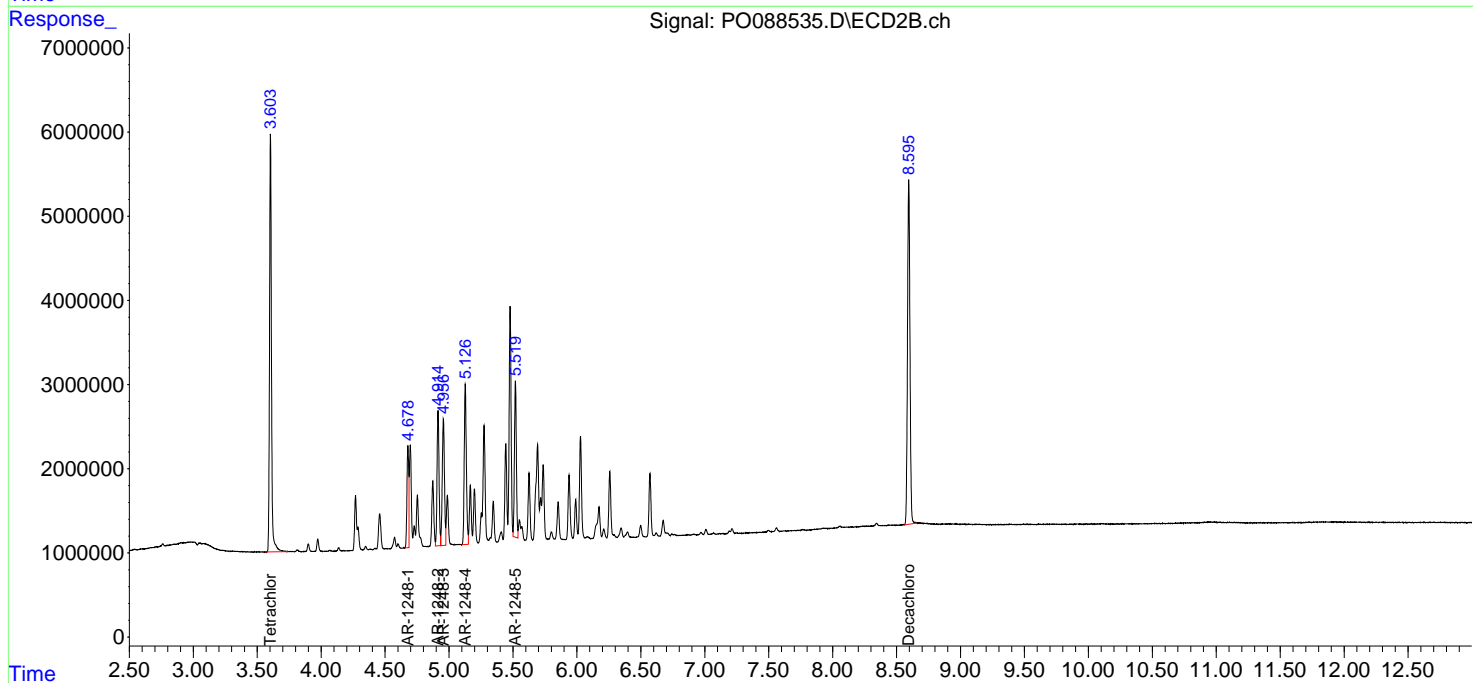
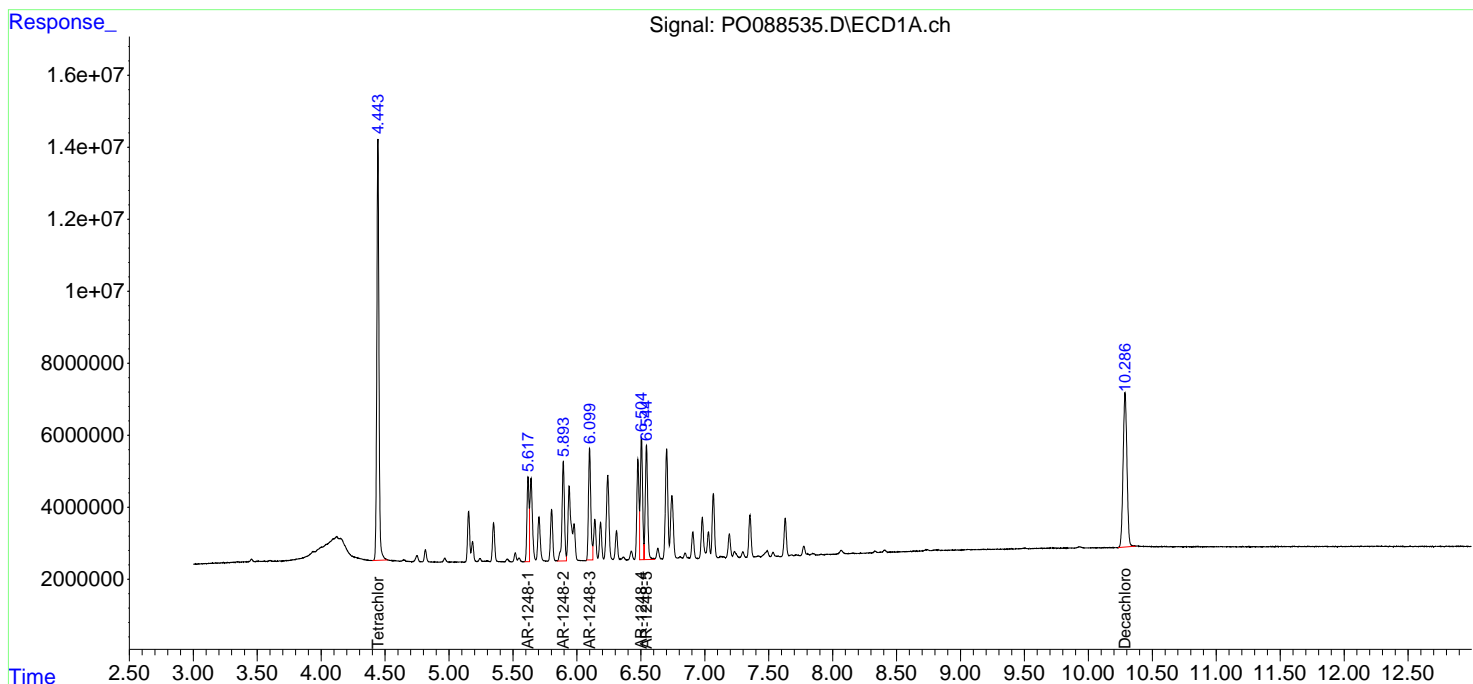
(f)=RT Delta > 1/2 Window (#)=Amounts differ by > 25% (m)=manual int.

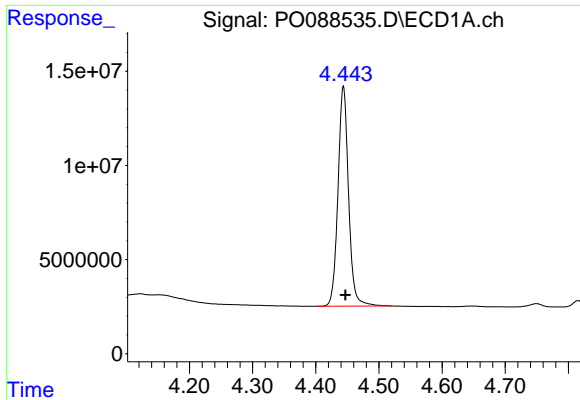
Data Path : Z:\pestpcbsrv\HPCHEM1\ECD\_O\Data\P0080222\  
 Data File : P0088535.D  
 Signal(s) : Signal #1: ECD1A.ch Signal #2: ECD2B.ch  
 Acq On : 02 Aug 2022 16:18  
 Operator : YP/AJ  
 Sample : AR1248CCC500  
 Misc :  
 ALS Vial : 5 Sample Multiplier: 1

Instrument :  
 ECD\_O  
 ClientSampleId :  
 AR1248CCC500

Integration File signal 1: autoint1.e  
 Integration File signal 2: autoint2.e  
 Quant Time: Aug 03 00:05:01 2022  
 Quant Method : Z:\pestpcbsrv\HPCHEM1\ECD\_O\methods\P0071422.M  
 Quant Title : GC EXTRACTABLES  
 QLast Update : Tue Jul 26 11:20:17 2022  
 Response via : Initial Calibration  
 Integrator: ChemStation

Volume Inj. : 2 µl  
 Signal #1 Phase : ZB-MR1 Signal #2 Phase: ZB-MR2  
 Signal #1 Info : 30Mx0.32mmx 0.50µ Signal #2 Info : 30M x 0.32mm x 0.25µm

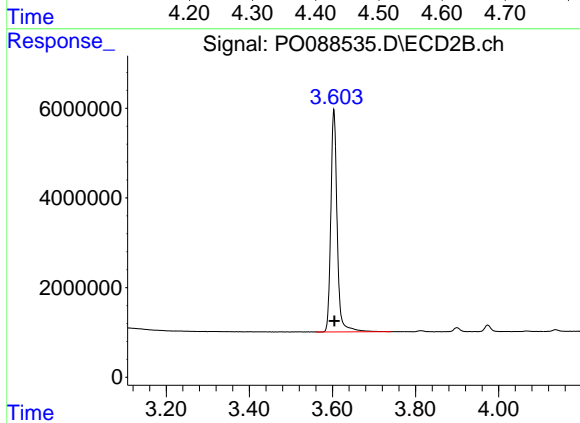




#1 Tetrachloro-m-xylene

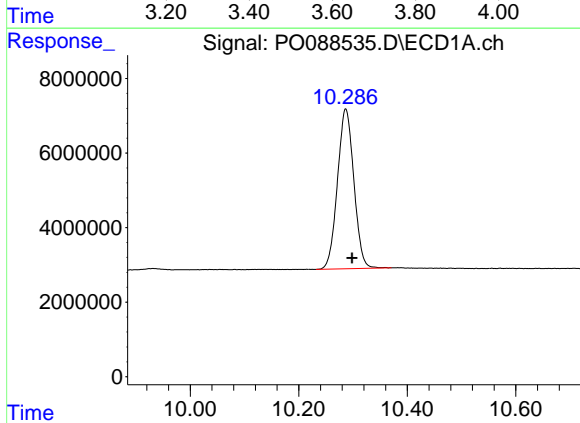
R.T.: 4.444 min  
 Delta R.T.: -0.003 min  
 Response: 135910964  
 Conc: 53.27 ng/ml

Instrument :  
 ECD\_O  
 ClientSampleId :  
 AR1248CCC500



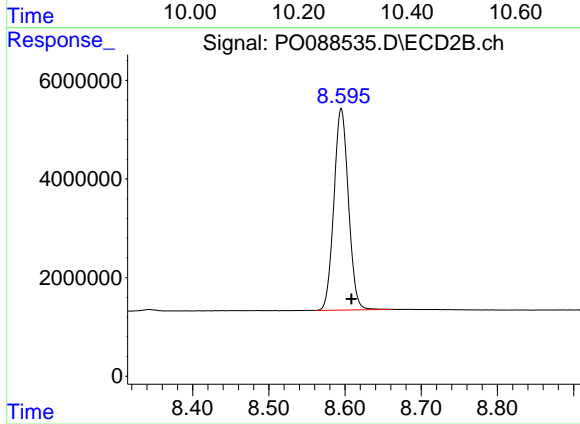
#1 Tetrachloro-m-xylene

R.T.: 3.604 min  
 Delta R.T.: -0.001 min  
 Response: 52596601  
 Conc: 55.75 ng/ml



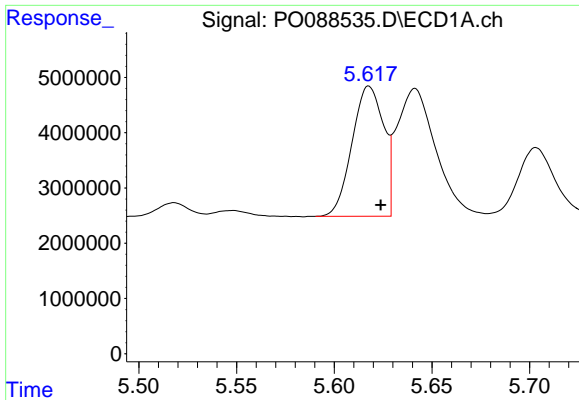
#2 Decachlorobiphenyl

R.T.: 10.287 min  
 Delta R.T.: -0.012 min  
 Response: 89921616  
 Conc: 42.34 ng/ml



#2 Decachlorobiphenyl

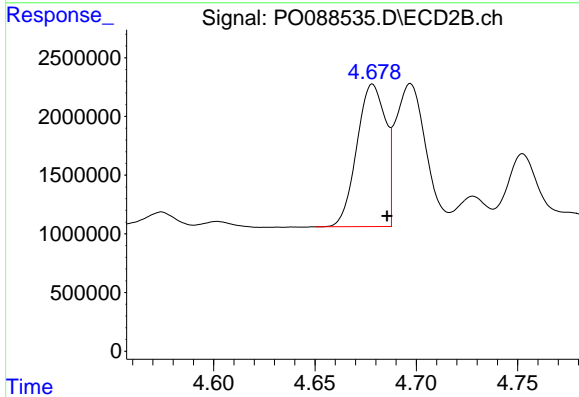
R.T.: 8.595 min  
 Delta R.T.: -0.013 min  
 Response: 54137107  
 Conc: 51.80 ng/ml



#21 AR-1248-1

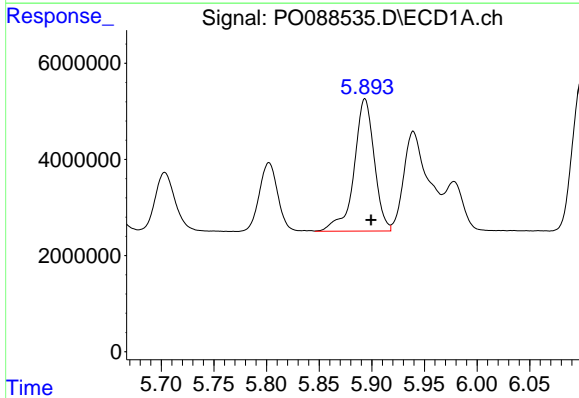
R.T.: 5.618 min  
 Delta R.T.: -0.006 min  
 Response: 26503713  
 Conc: 496.06 ng/ml

Instrument :  
 ECD\_O  
 ClientSampleId :  
 AR1248CCC500



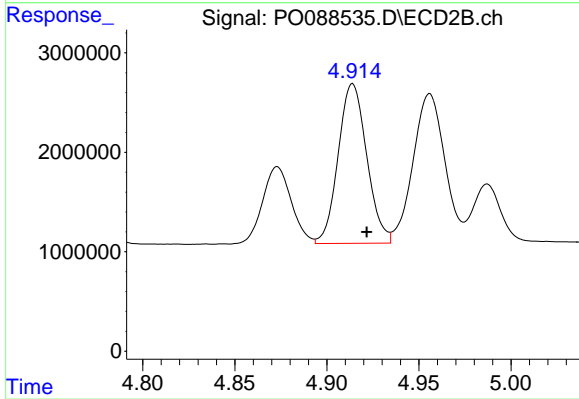
#21 AR-1248-1

R.T.: 4.678 min  
 Delta R.T.: -0.007 min  
 Response: 11963930  
 Conc: 522.30 ng/ml



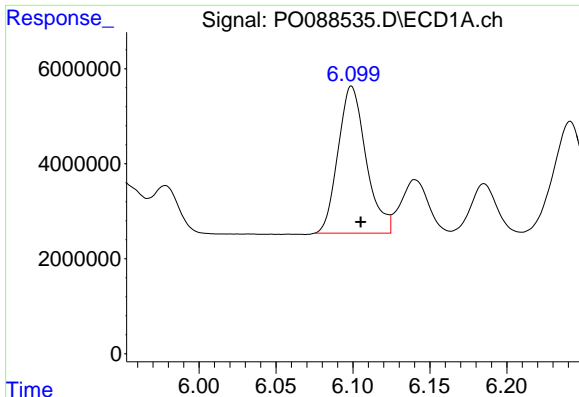
#22 AR-1248-2

R.T.: 5.894 min  
 Delta R.T.: -0.006 min  
 Response: 36708361  
 Conc: 472.44 ng/ml



#22 AR-1248-2

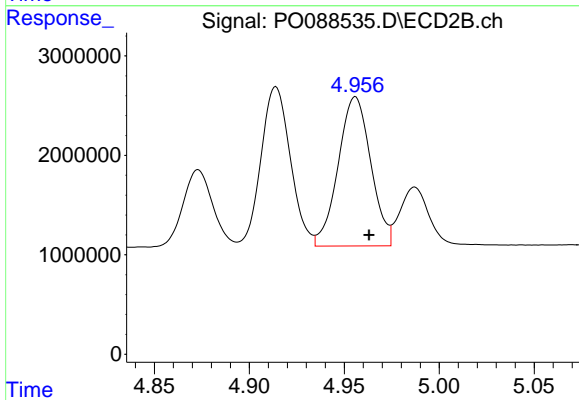
R.T.: 4.914 min  
 Delta R.T.: -0.008 min  
 Response: 17342757  
 Conc: 514.13 ng/ml



#23 AR-1248-3

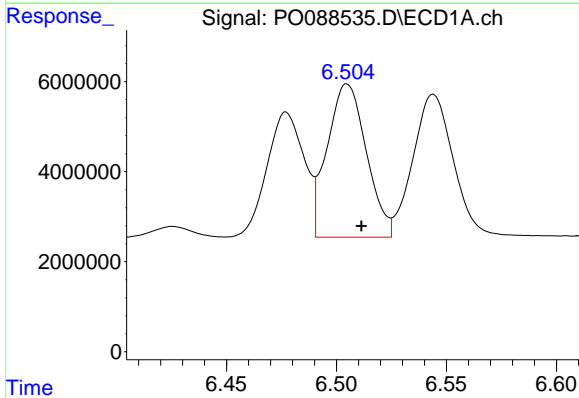
R.T.: 6.099 min  
 Delta R.T.: -0.006 min  
 Response: 39053383  
 Conc: 466.53 ng/ml

Instrument :  
 ECD\_O  
 ClientSampleId :  
 AR1248CCC500



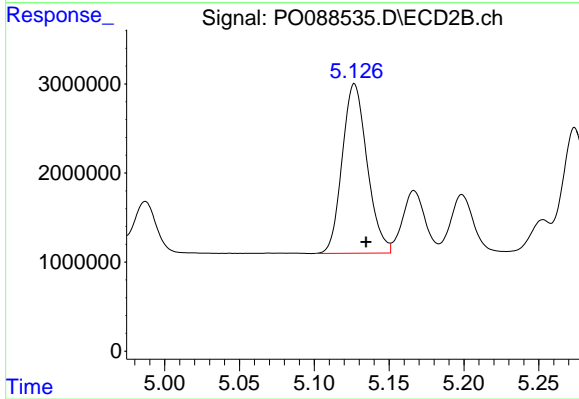
#23 AR-1248-3

R.T.: 4.956 min  
 Delta R.T.: -0.007 min  
 Response: 17954640  
 Conc: 516.63 ng/ml



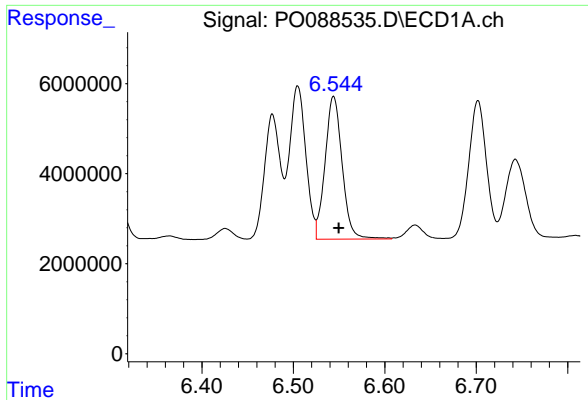
#24 AR-1248-4

R.T.: 6.505 min  
 Delta R.T.: -0.007 min  
 Response: 42163760  
 Conc: 458.76 ng/ml



#24 AR-1248-4

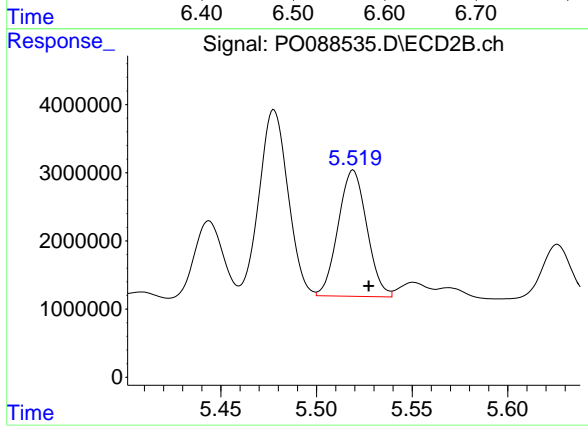
R.T.: 5.127 min  
 Delta R.T.: -0.008 min  
 Response: 22048780  
 Conc: 526.66 ng/ml



#25 AR-1248-5

R.T.: 6.544 min  
Delta R.T.: -0.006 min  
Response: 41194137  
Conc: 458.04 ng/ml

Instrument :  
ECD\_O  
ClientSampleId :  
AR1248CCC500



#25 AR-1248-5

R.T.: 5.519 min  
Delta R.T.: -0.008 min  
Response: 19357197  
Conc: 537.26 ng/ml