

Data Path : Z:\pestpcbsrv\HPCHEM1\ECD_0\Data\P0080224\
 Data File : P0105177.D
 Signal(s) : Signal #1: ECD1A.ch Signal #2: ECD2B.ch
 Acq On : 03 Aug 2024 04:21
 Operator : YP/AJ
 Sample : AR1242CCC500
 Misc :
 ALS Vial : 4 Sample Multiplier: 1

Instrument :
 ECD_0
 ClientSampleId :
 AR1242CCC500

Integration File signal 1: autoint1.e
 Integration File signal 2: autoint2.e
 Quant Time: Aug 03 05:06:21 2024
 Quant Method : Z:\pestpcbsrv\HPCHEM1\ECD_0\methods\P0072924.M
 Quant Title : GC EXTRACTABLES
 QLast Update : Tue Jul 30 07:11:20 2024
 Response via : Initial Calibration
 Integrator: ChemStation

Volume Inj. : 2 µl
 Signal #1 Phase : ZB-MR1 Signal #2 Phase: ZB-MR2
 Signal #1 Info : 30Mx0.32mmx 0.50µ Signal #2 Info : 30M x 0.32mm x 0.25µm

Compound	RT#1	RT#2	Resp#1	Resp#2	ng/ml	ng/ml

System Monitoring Compounds						
1) SA Tetrachlo...	4.428	3.538	391.2E6	144.4E6	56.824	56.683
2) SA Decachlor...	10.221	8.431	271.4E6	83054666	52.863	52.284
Target Compounds						
16) L4 AR-1242-1	5.599	4.593	106.3E6	40828978	544.310	533.302
17) L4 AR-1242-2	5.622	4.611	147.7E6	56280677	539.575	536.420
18) L4 AR-1242-3	5.685	4.783	92331450	29788023	547.105	536.711
19) L4 AR-1242-4	5.784	4.865	76572326	30380539	508.366	542.889
20) L4 AR-1242-5	6.527	5.377	79941151	38182637	479.103	538.409

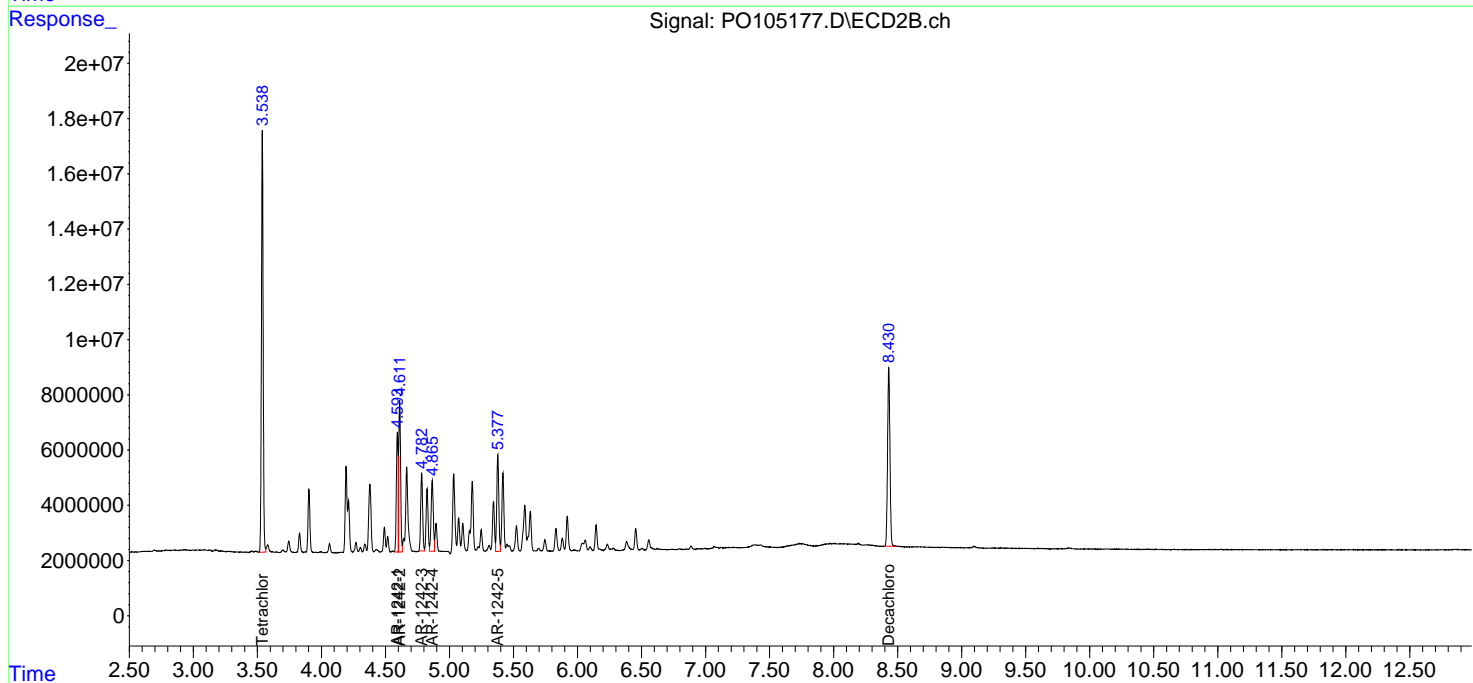
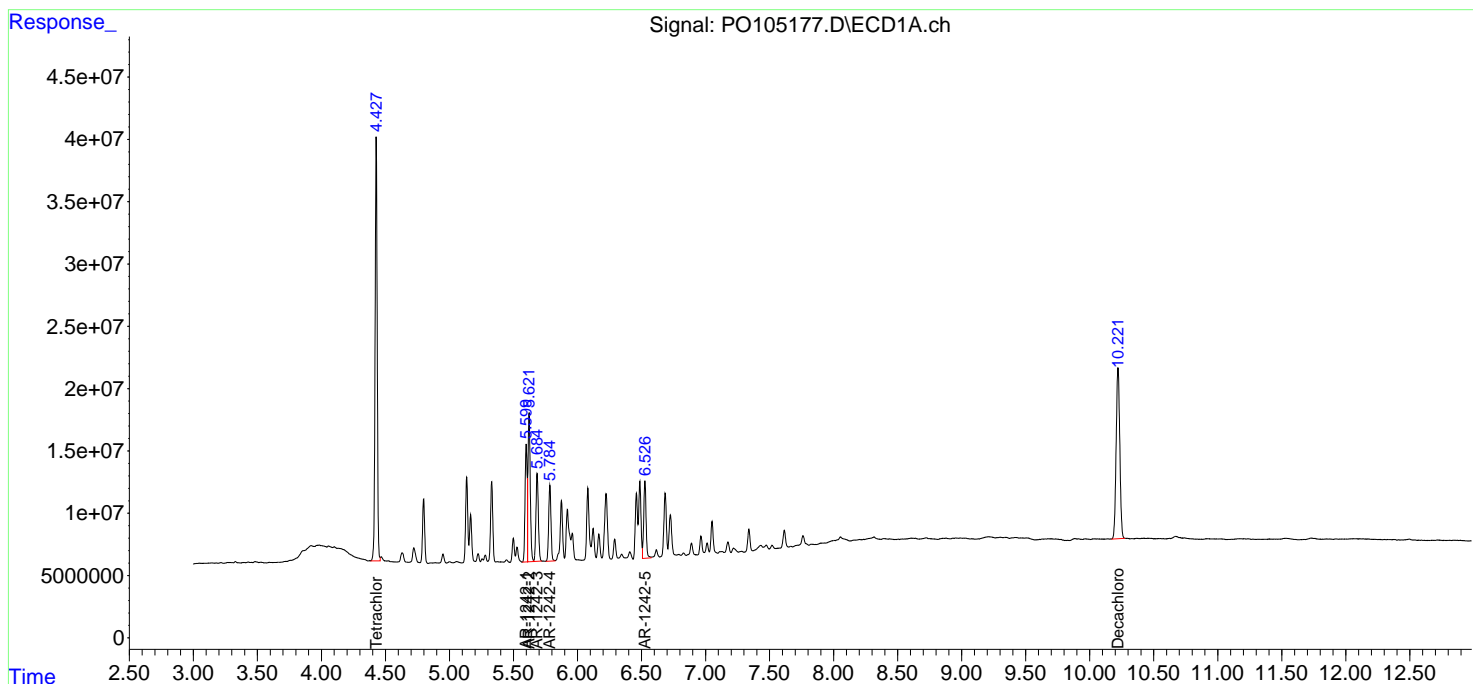
(f)=RT Delta > 1/2 Window (#)=Amounts differ by > 25% (m)=manual int.

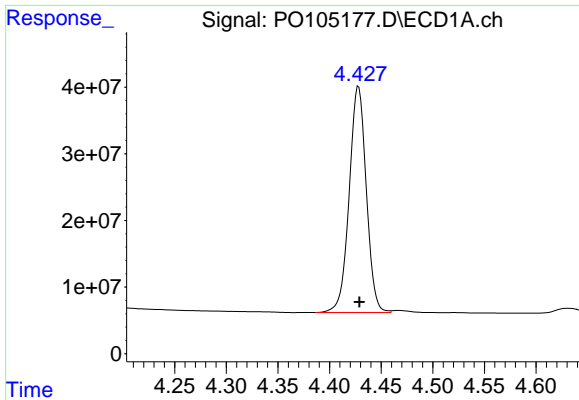
Data Path : Z:\pestpcbsrv\HPCHEM1\ECD_O\Data\PO080224\
 Data File : PO105177.D
 Signal(s) : Signal #1: ECD1A.ch Signal #2: ECD2B.ch
 Acq On : 03 Aug 2024 04:21
 Operator : YP/AJ
 Sample : AR1242CCC500
 Misc :
 ALS Vial : 4 Sample Multiplier: 1

Instrument :
 ECD_O
 ClientSampleId :
 AR1242CCC500

Integration File signal 1: autoint1.e
 Integration File signal 2: autoint2.e
 Quant Time: Aug 03 05:06:21 2024
 Quant Method : Z:\pestpcbsrv\HPCHEM1\ECD_O\methods\PO072924.M
 Quant Title : GC EXTRACTABLES
 QLast Update : Tue Jul 30 07:11:20 2024
 Response via : Initial Calibration
 Integrator: ChemStation

Volume Inj. : 2 µl
 Signal #1 Phase : ZB-MR1 Signal #2 Phase: ZB-MR2
 Signal #1 Info : 30Mx0.32mmx 0.50µ Signal #2 Info : 30M x 0.32mm x 0.25µm

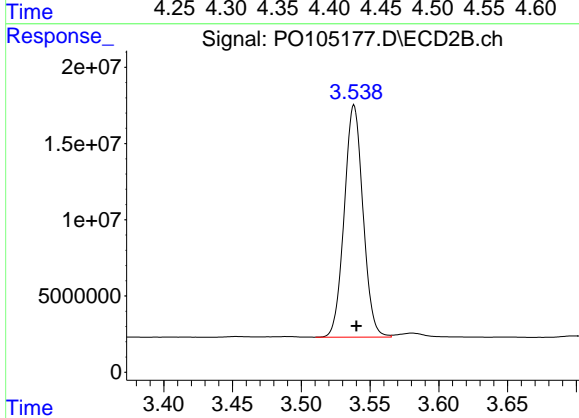




#1 Tetrachloro-m-xylene

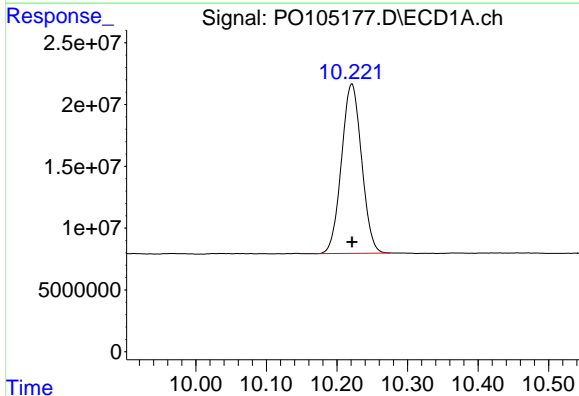
R.T.: 4.428 min
 Delta R.T.: 0.000 min
 Response: 391195441
 Conc: 56.82 ng/ml

Instrument :
 ECD_O
 ClientSampleId :
 AR1242CCC500



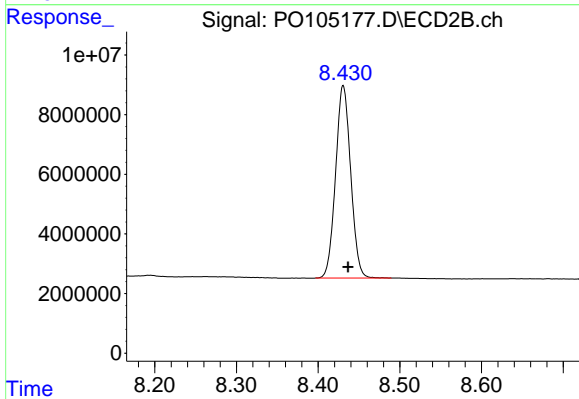
#1 Tetrachloro-m-xylene

R.T.: 3.538 min
 Delta R.T.: -0.002 min
 Response: 144432692
 Conc: 56.68 ng/ml



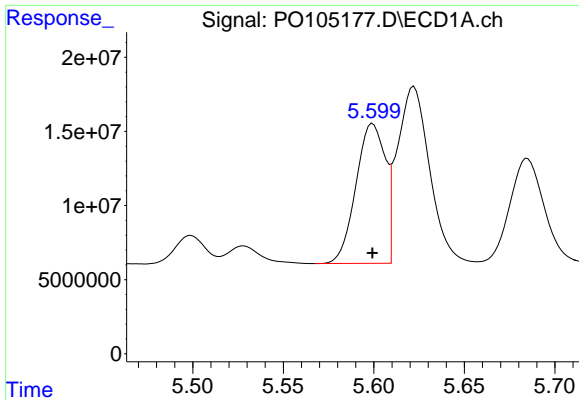
#2 Decachlorobiphenyl

R.T.: 10.221 min
 Delta R.T.: 0.000 min
 Response: 271398547
 Conc: 52.86 ng/ml



#2 Decachlorobiphenyl

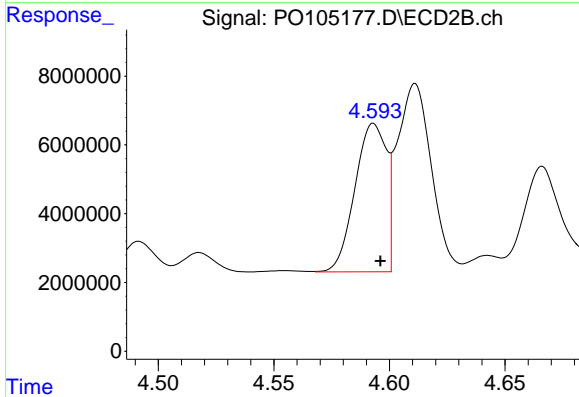
R.T.: 8.431 min
 Delta R.T.: -0.006 min
 Response: 83054666
 Conc: 52.28 ng/ml



#16 AR-1242-1

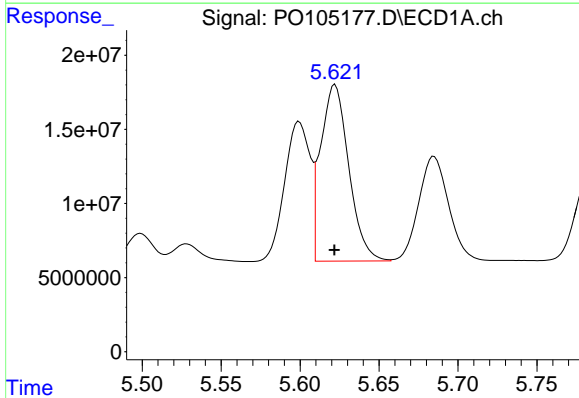
R.T.: 5.599 min
 Delta R.T.: 0.000 min
 Response: 106259564
 Conc: 544.31 ng/ml

Instrument :
 ECD_O
 ClientSampleId :
 AR1242CCC500



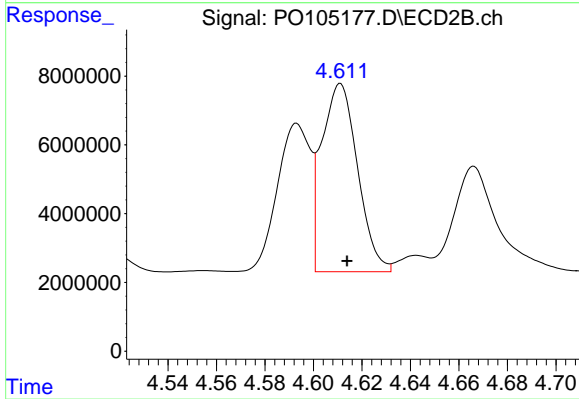
#16 AR-1242-1

R.T.: 4.593 min
 Delta R.T.: -0.003 min
 Response: 40828978
 Conc: 533.30 ng/ml



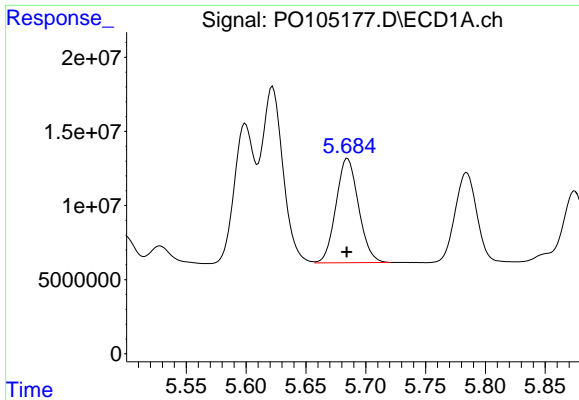
#17 AR-1242-2

R.T.: 5.622 min
 Delta R.T.: 0.000 min
 Response: 147689479
 Conc: 539.57 ng/ml



#17 AR-1242-2

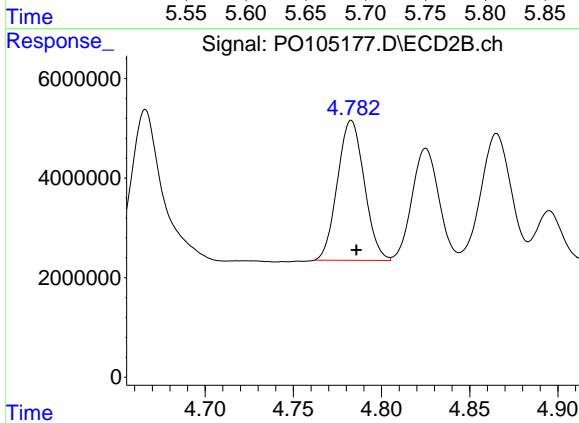
R.T.: 4.611 min
 Delta R.T.: -0.003 min
 Response: 56280677
 Conc: 536.42 ng/ml



#18 AR-1242-3

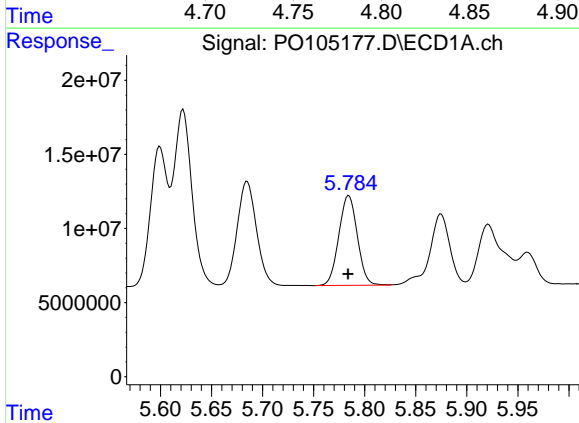
R.T.: 5.685 min
 Delta R.T.: 0.000 min
 Response: 92331450
 Conc: 547.11 ng/ml

Instrument :
 ECD_O
 ClientSampleId :
 AR1242CCC500



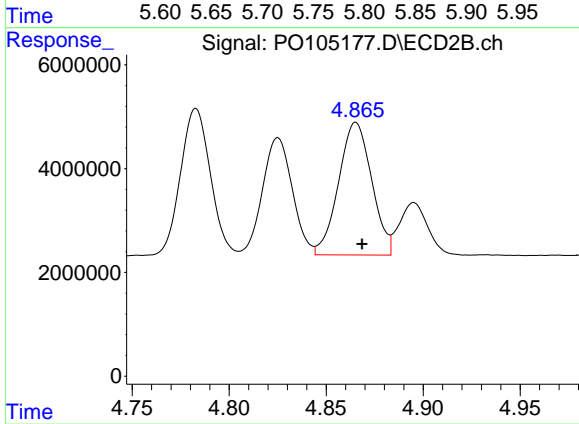
#18 AR-1242-3

R.T.: 4.783 min
 Delta R.T.: -0.003 min
 Response: 29788023
 Conc: 536.71 ng/ml



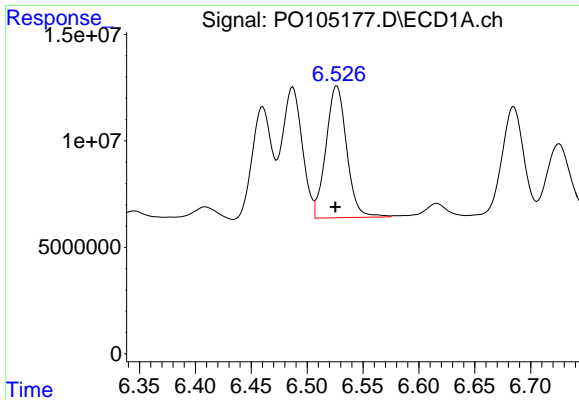
#19 AR-1242-4

R.T.: 5.784 min
 Delta R.T.: 0.000 min
 Response: 76572326
 Conc: 508.37 ng/ml



#19 AR-1242-4

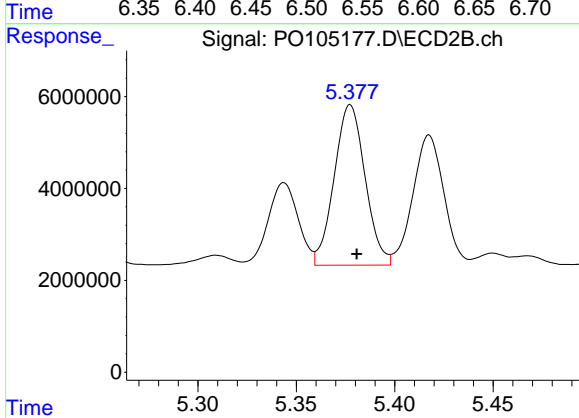
R.T.: 4.865 min
 Delta R.T.: -0.003 min
 Response: 30380539
 Conc: 542.89 ng/ml



#20 AR-1242-5

R.T.: 6.527 min
Delta R.T.: 0.002 min
Response: 79941151
Conc: 479.10 ng/ml

Instrument :
ECD_O
ClientSampleId :
AR1242CCC500



#20 AR-1242-5

R.T.: 5.377 min
Delta R.T.: -0.003 min
Response: 38182637
Conc: 538.41 ng/ml