

Data Path : Z:\pestpcbsrv\HPCHEM1\ECD\_0\Data\P0080323\  
 Data File : P0096650.D  
 Signal(s) : Signal #1: ECD1A.ch Signal #2: ECD2B.ch  
 Acq On : 03 Aug 2023 14:58  
 Operator : YP/AJ  
 Sample : 03886-01  
 Misc :  
 ALS Vial : 18 Sample Multiplier: 1

Instrument :  
 ECD\_0  
 ClientSampleId :  
 500-1A-1B

Integration File signal 1: autoint1.e  
 Integration File signal 2: autoint2.e  
 Quant Time: Aug 04 01:27:41 2023  
 Quant Method : Z:\pestpcbsrv\HPCHEM1\ECD\_0\methods\P0072723.M  
 Quant Title : GC EXTRACTABLES  
 QLast Update : Fri Jul 28 01:38:03 2023  
 Response via : Initial Calibration  
 Integrator: ChemStation

Volume Inj. : 2 µl  
 Signal #1 Phase : ZB-MR1 Signal #2 Phase: ZB-MR2  
 Signal #1 Info : 30Mx0.32mmx 0.50µ Signal #2 Info : 30M x 0.32mm x 0.25µm

Compound	RT#1	RT#2	Resp#1	Resp#2	ng/ml	ng/ml
-----						
System Monitoring Compounds						
1) SA Tetrachlo...	4.409	3.622	59264406	23951716	17.737	16.908
2) SA Decachlor...	10.234	8.643	43883037	23448490	19.834	19.934m
Target Compounds						
31) L7 AR-1260-1	7.210	6.196	2160274	1014717	16.603	13.924
32) L7 AR-1260-2	7.468	6.385	2345663	1535016	17.121	17.750
33) L7 AR-1260-3	7.748	6.541	2974541	1458360	19.455	18.222
34) L7 AR-1260-4	8.058	7.012	8454520	4414893	69.432	67.609
35) L7 AR-1260-5	8.381	7.255	15333703	10152621	69.721	71.646
-----						

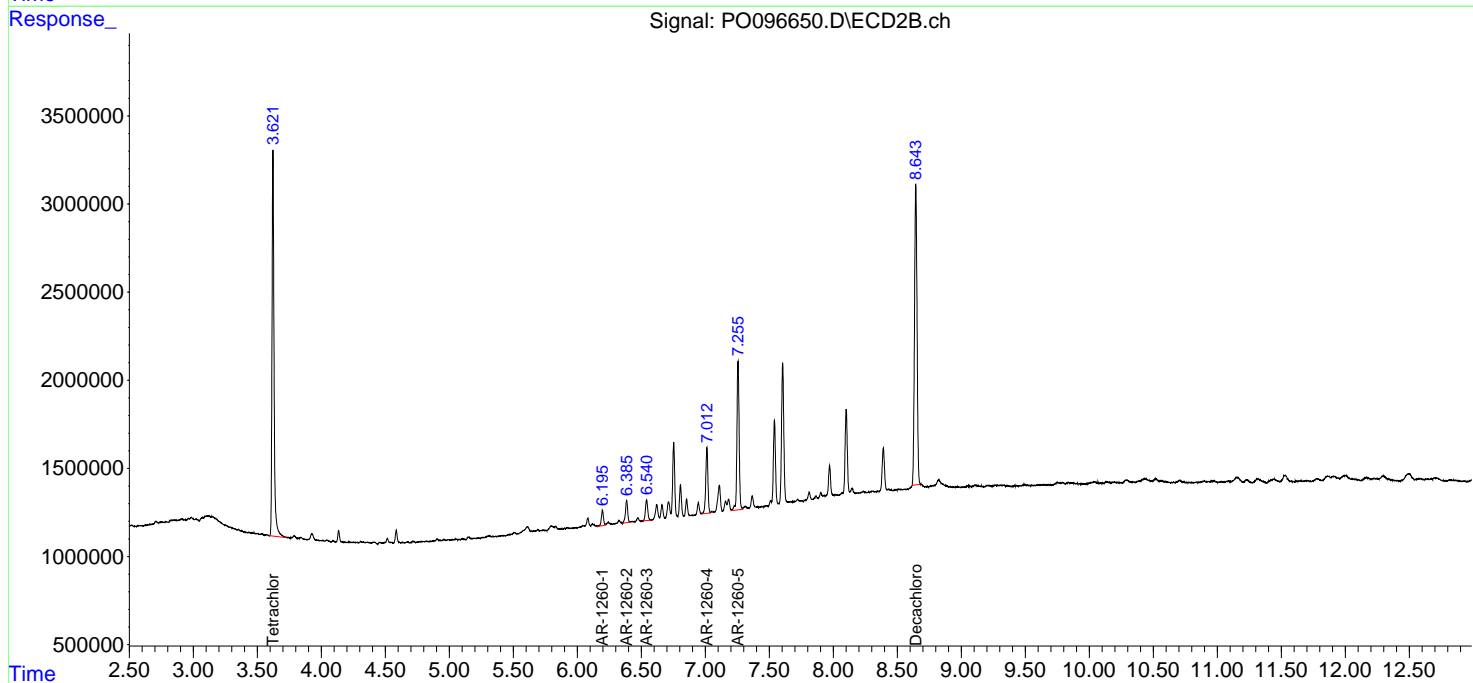
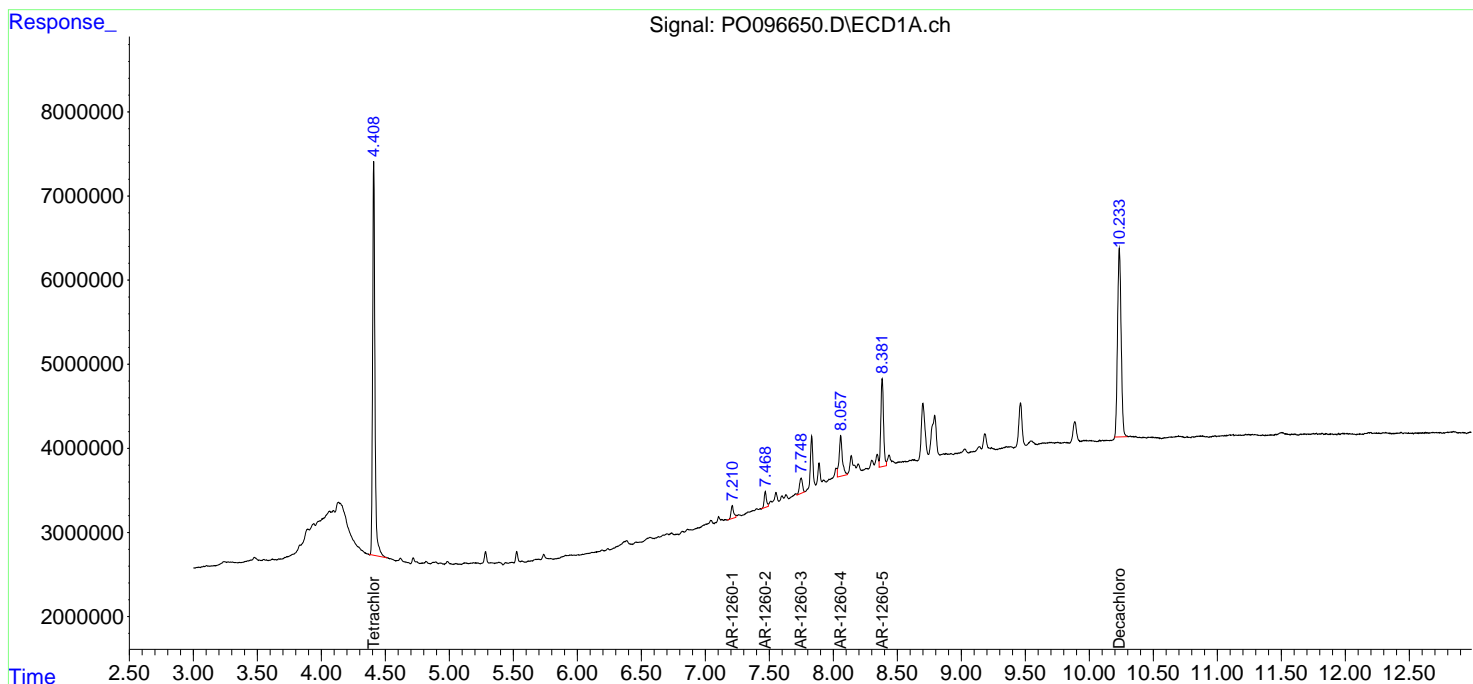
(f)=RT Delta > 1/2 Window (#)=Amounts differ by > 25% (m)=manual int.

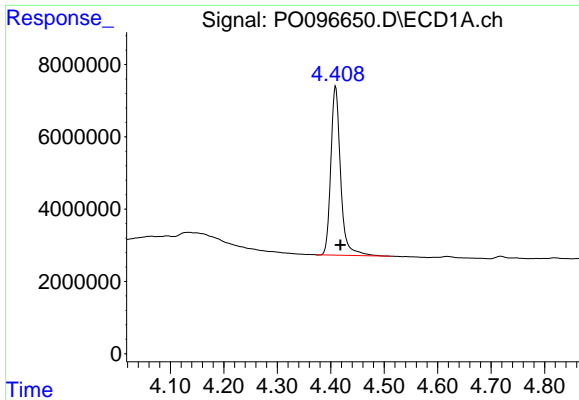
Data Path : Z:\pestpcbsrv\HPCHEM1\ECD\_O\Data\P0080323\  
 Data File : P0096650.D  
 Signal(s) : Signal #1: ECD1A.ch Signal #2: ECD2B.ch  
 Acq On : 03 Aug 2023 14:58  
 Operator : YP/AJ  
 Sample : 03886-01  
 Misc :  
 ALS Vial : 18 Sample Multiplier: 1

Instrument :  
 ECD\_O  
 ClientSampleId :  
 500-1A-1B

Integration File signal 1: autoint1.e  
 Integration File signal 2: autoint2.e  
 Quant Time: Aug 04 01:27:41 2023  
 Quant Method : Z:\pestpcbsrv\HPCHEM1\ECD\_O\methods\P0072723.M  
 Quant Title : GC EXTRACTABLES  
 QLast Update : Fri Jul 28 01:38:03 2023  
 Response via : Initial Calibration  
 Integrator: ChemStation

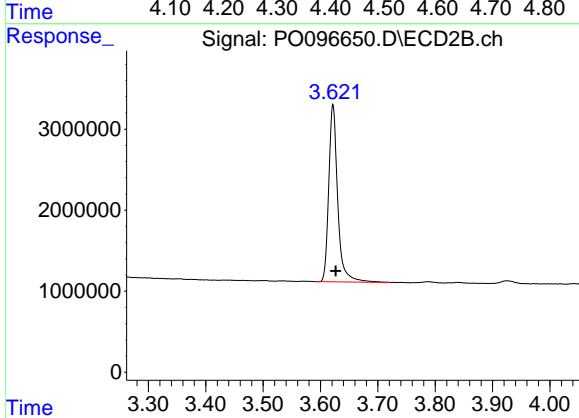
Volume Inj. : 2 µl  
 Signal #1 Phase : ZB-MR1 Signal #2 Phase: ZB-MR2  
 Signal #1 Info : 30Mx0.32mmx 0.50µm Signal #2 Info : 30M x 0.32mm x 0.25µm



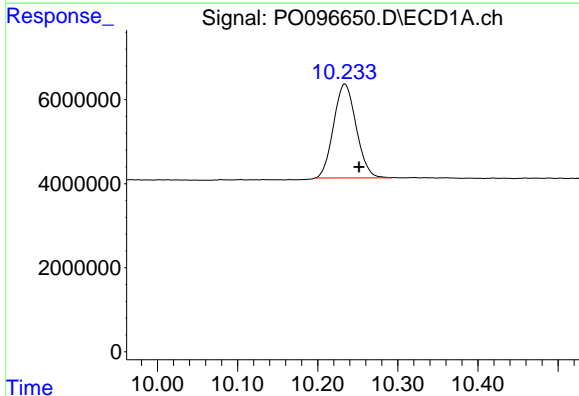


#1 Tetrachloro-m-xylene  
 R.T.: 4.409 min  
 Delta R.T.: -0.009 min  
 Response: 59264406  
 Conc: 17.74 ng/ml

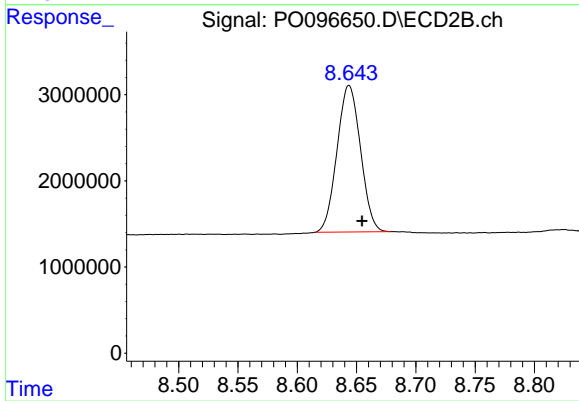
Instrument :  
 ECD\_O  
 ClientSampleId :  
 500-1A-1B



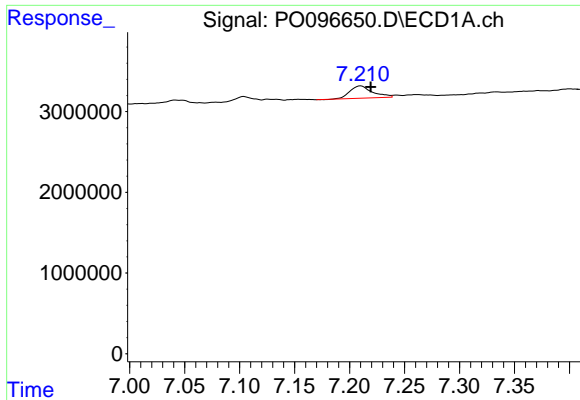
#1 Tetrachloro-m-xylene  
 R.T.: 3.622 min  
 Delta R.T.: -0.005 min  
 Response: 23951716  
 Conc: 16.91 ng/ml



#2 Decachlorobiphenyl  
 R.T.: 10.234 min  
 Delta R.T.: -0.017 min  
 Response: 43883037  
 Conc: 19.83 ng/ml



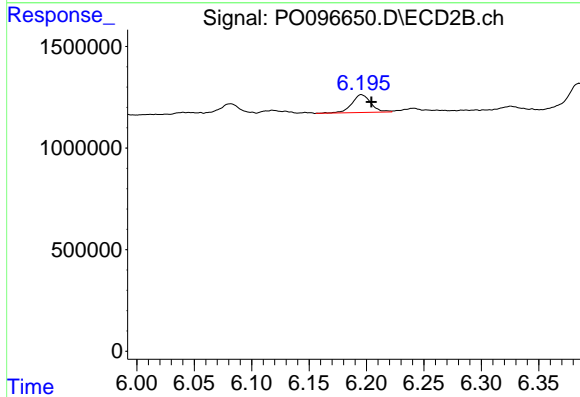
#2 Decachlorobiphenyl  
 R.T.: 8.643 min  
 Delta R.T.: -0.011 min  
 Response: 23448490  
 Conc: 19.93 ng/ml m



#31 AR-1260-1

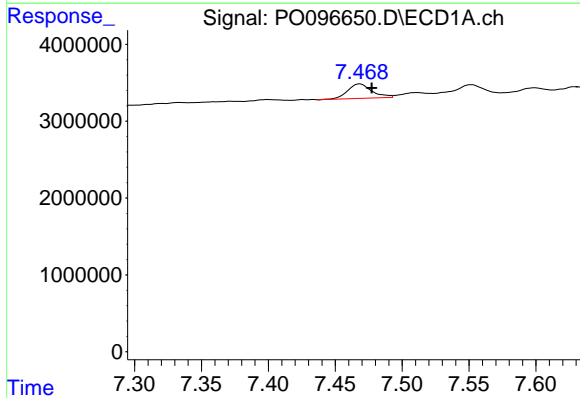
R.T.: 7.210 min  
 Delta R.T.: -0.009 min  
 Response: 2160274  
 Conc: 16.60 ng/ml

Instrument :  
 ECD\_O  
 ClientSampleId :  
 500-1A-1B



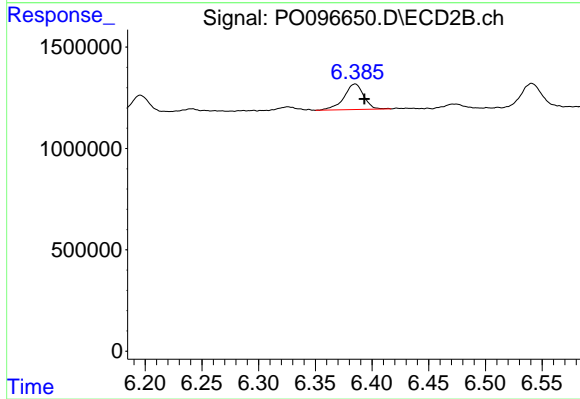
#31 AR-1260-1

R.T.: 6.196 min  
 Delta R.T.: -0.008 min  
 Response: 1014717  
 Conc: 13.92 ng/ml



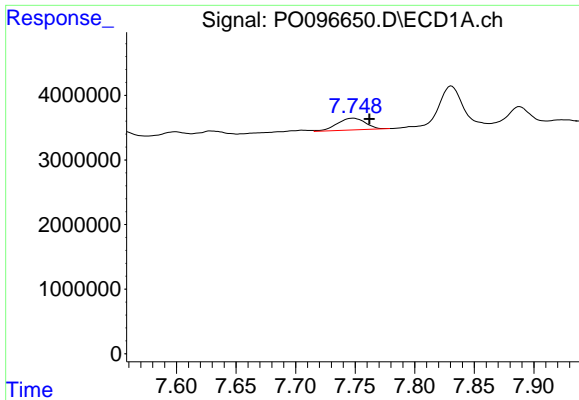
#32 AR-1260-2

R.T.: 7.468 min  
 Delta R.T.: -0.009 min  
 Response: 2345663  
 Conc: 17.12 ng/ml



#32 AR-1260-2

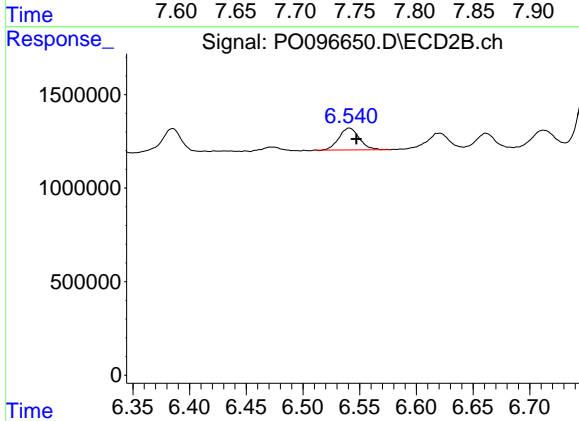
R.T.: 6.385 min  
 Delta R.T.: -0.008 min  
 Response: 1535016  
 Conc: 17.75 ng/ml



#33 AR-1260-3

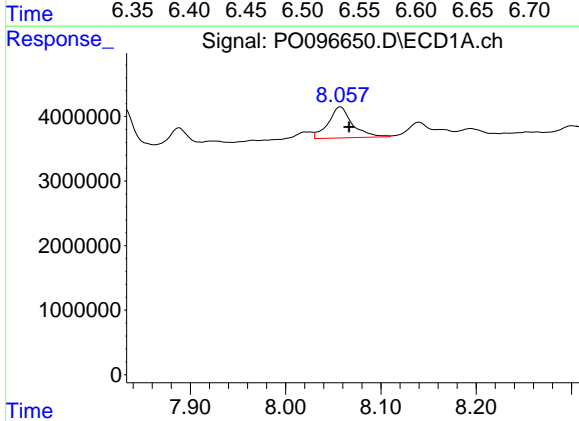
R.T.: 7.748 min  
 Delta R.T.: -0.014 min  
 Response: 2974541  
 Conc: 19.46 ng/ml

Instrument :  
 ECD\_O  
 ClientSampleId :  
 500-1A-1B



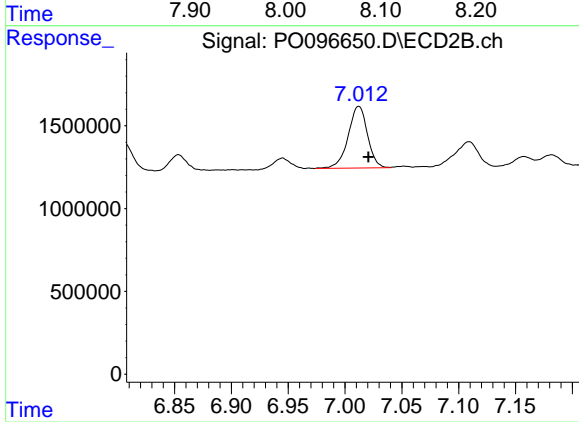
#33 AR-1260-3

R.T.: 6.541 min  
 Delta R.T.: -0.006 min  
 Response: 1458360  
 Conc: 18.22 ng/ml



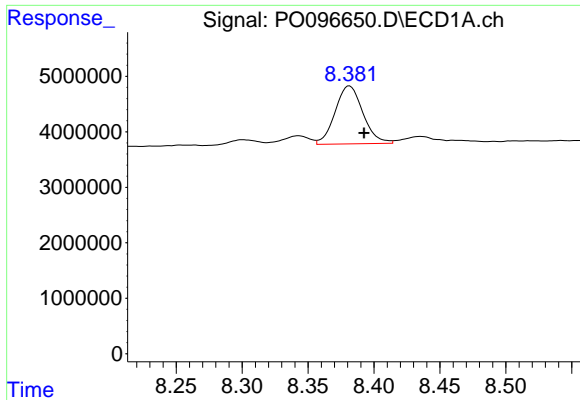
#34 AR-1260-4

R.T.: 8.058 min  
 Delta R.T.: -0.009 min  
 Response: 8454520  
 Conc: 69.43 ng/ml



#34 AR-1260-4

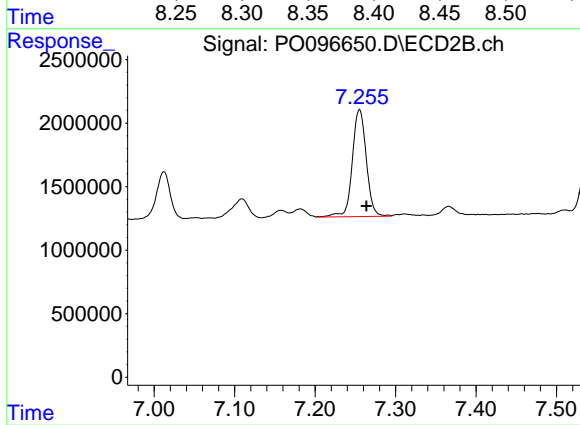
R.T.: 7.012 min  
 Delta R.T.: -0.008 min  
 Response: 4414893  
 Conc: 67.61 ng/ml



#35 AR-1260-5

R.T.: 8.381 min  
Delta R.T.: -0.011 min  
Response: 15333703  
Conc: 69.72 ng/ml

Instrument :  
ECD\_O  
ClientSampleId :  
500-1A-1B



#35 AR-1260-5

R.T.: 7.255 min  
Delta R.T.: -0.008 min  
Response: 10152621  
Conc: 71.65 ng/ml