

Data Path : Z:\pestpcbsrv\HPCHEM1\ECD_0\Data\P0080423\
 Data File : P0096715.D
 Signal(s) : Signal #1: ECD1A.ch Signal #2: ECD2B.ch
 Acq On : 04 Aug 2023 21:44
 Operator : YP/AJ
 Sample : AR1248CCC500
 Misc :
 ALS Vial : 5 Sample Multiplier: 1

Instrument :
 ECD_0
ClientSampleId :
 AR1248CCC500

Manual Integrations
APPROVED

Reviewed By :Yogesh Patel 08/07/2023
 Supervised By :Ankita Jodhani 08/07/2023

Integration File signal 1: autoint1.e
 Integration File signal 2: autoint2.e
 Quant Time: Aug 05 00:21:56 2023
 Quant Method : Z:\pestpcbsrv\HPCHEM1\ECD_0\methods\P0072723.M
 Quant Title : GC EXTRACTABLES
 QLast Update : Fri Jul 28 01:38:03 2023
 Response via : Initial Calibration
 Integrator: ChemStation

Volume Inj. : 2 µl
 Signal #1 Phase : ZB-MR2 Signal #2 Phase: ZB-MR2
 Signal #1 Info : 30Mx0.32mmx 0.50µ Signal #2 Info : 30M x 0.32mm x 0.25µm

Compound	RT#1	RT#2	Resp#1	Resp#2	ng/ml	ng/ml

System Monitoring Compounds						
1) SA Tetrachlo...	4.405	3.621	176.6E6	72246867	52.859	51.002
2) SA Decachlor...	10.328f	8.643	114.3E6	58503885	51.647m	49.735m
Target Compounds						
21) L5 AR-1248-1	5.586	4.707	32167925	15136027	560.144m	541.803
22) L5 AR-1248-2	5.865	4.945	47119409	21630053	508.075	513.040
23) L5 AR-1248-3	6.073	4.986	49566094	22802456	503.062	518.962
24) L5 AR-1248-4	6.484	5.158	45391619	26766734	488.964	522.083m
25) L5 AR-1248-5	6.523	5.552	43817628	23988410	474.484	511.060

(f)=RT Delta > 1/2 Window (#)=Amounts differ by > 25% (m)=manual int.

Data Path : Z:\pestpcbsrv\HPCHEM1\ECD_O\Data\PO080423\
 Data File : PO096715.D
 Signal(s) : Signal #1: ECD1A.ch Signal #2: ECD2B.ch
 Acq On : 04 Aug 2023 21:44
 Operator : YP/AJ
 Sample : AR1248CCC500
 Misc :
 ALS Vial : 5 Sample Multiplier: 1

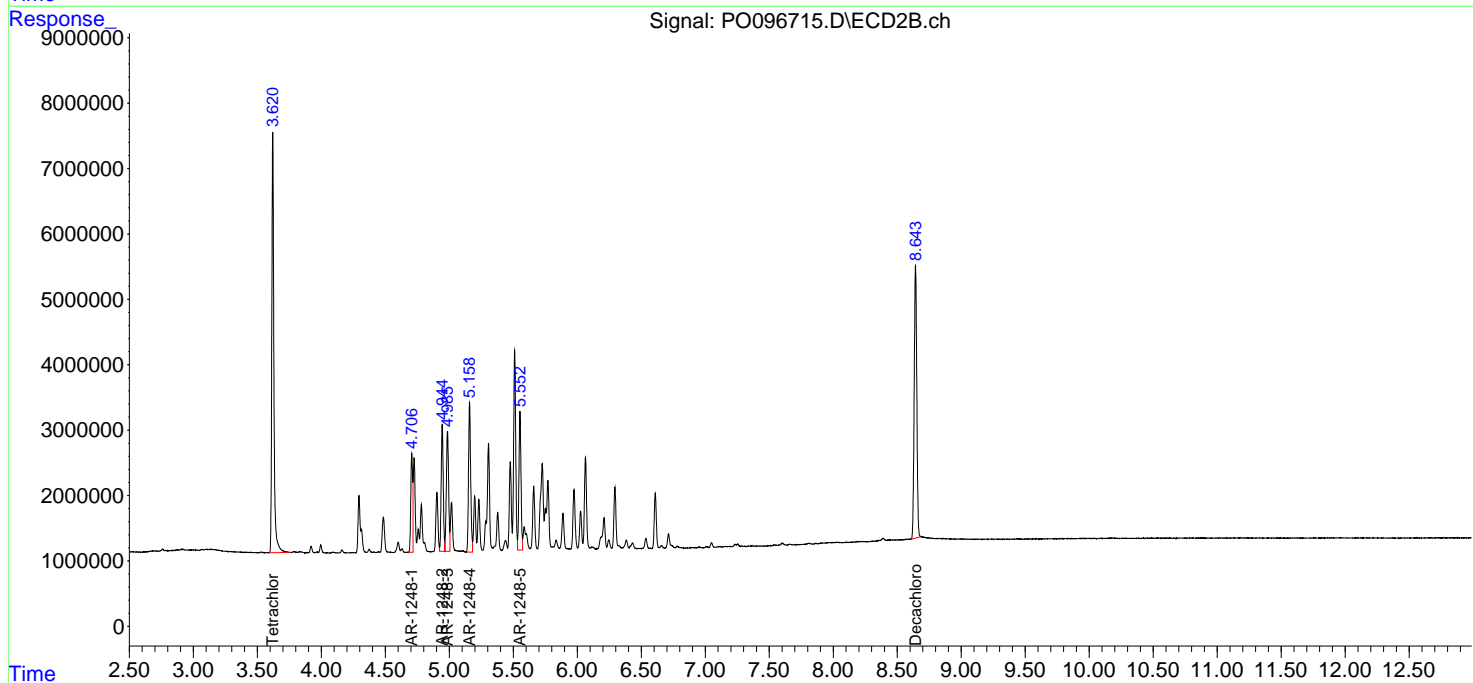
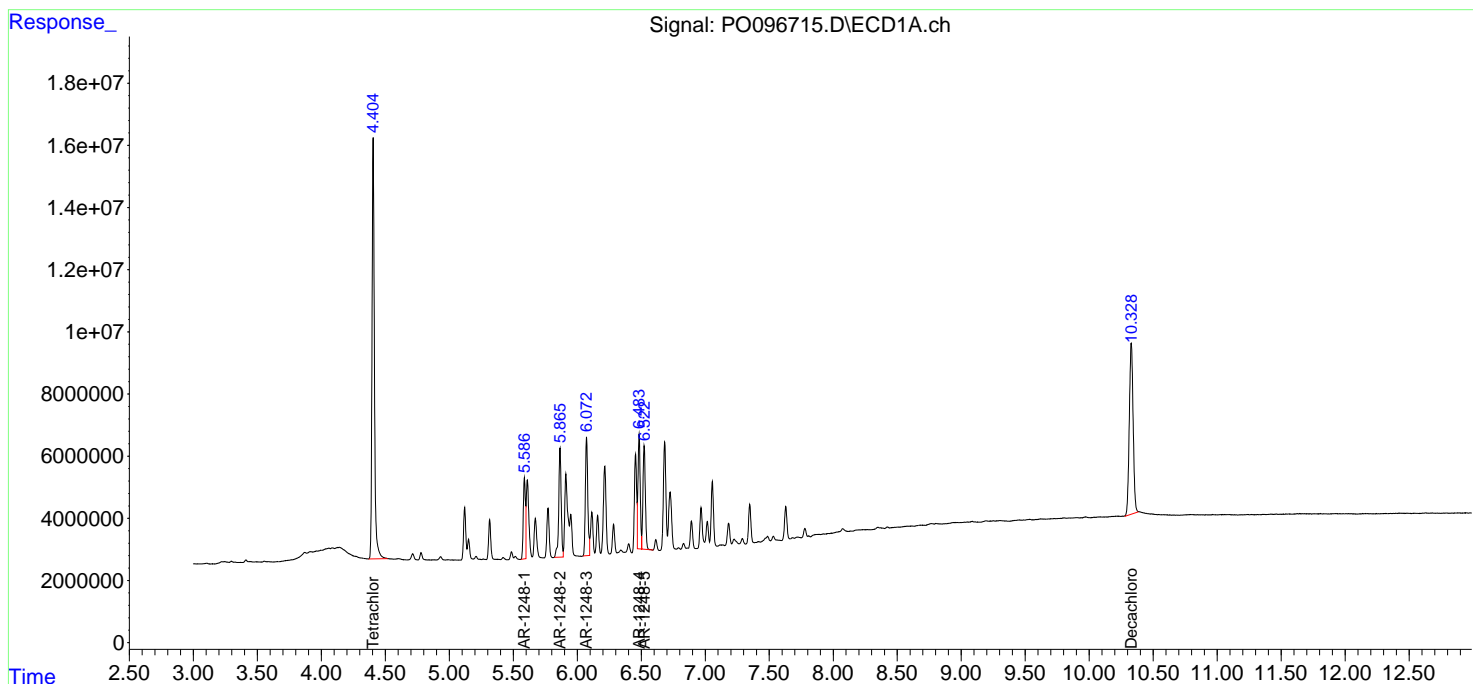
Instrument :
 ECD_O
 ClientSampleId :
 AR1248CCC500

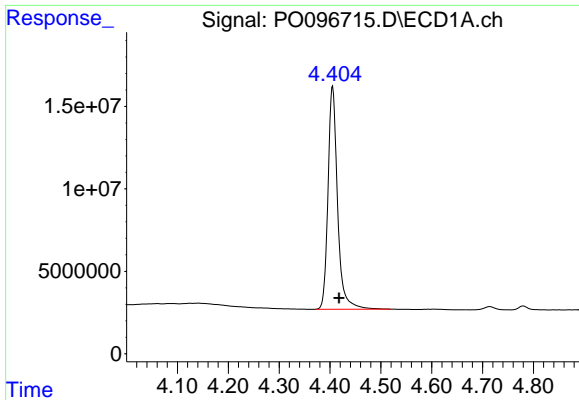
Manual Integrations
 APPROVED

Reviewed By :Yogesh Patel 08/07/2023
 Supervised By :Ankita Jodhani 08/07/2023

Integration File signal 1: autoint1.e
 Integration File signal 2: autoint2.e
 Quant Time: Aug 05 00:21:56 2023
 Quant Method : Z:\pestpcbsrv\HPCHEM1\ECD_O\methods\PO072723.M
 Quant Title : GC EXTRACTABLES
 QLast Update : Fri Jul 28 01:38:03 2023
 Response via : Initial Calibration
 Integrator: ChemStation

Volume Inj. : 2 µl
 Signal #1 Phase : ZB-MR1 Signal #2 Phase: ZB-MR2
 Signal #1 Info : 30Mx0.32mmx 0.50µ Signal #2 Info : 30M x 0.32mm x 0.25µm

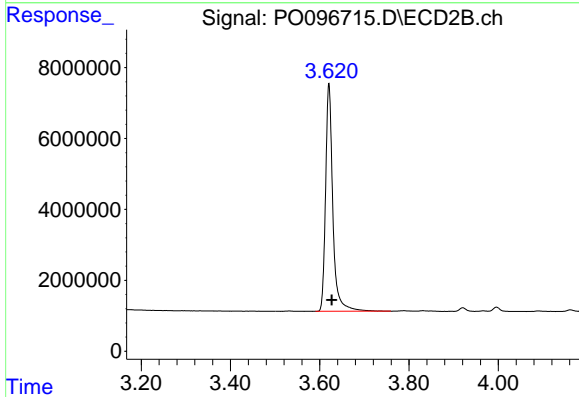




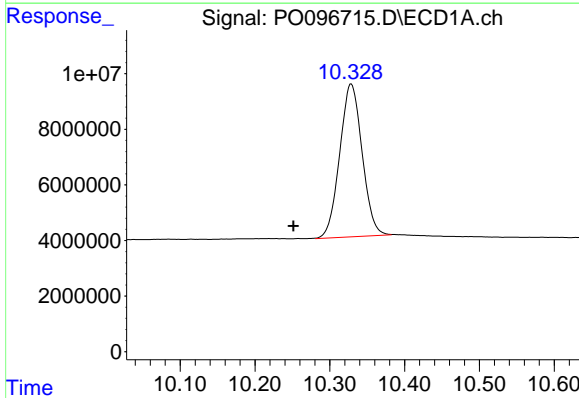
#1 Tetrachloro-m-xylene
 R.T.: 4.405 min
 Delta R.T.: -0.013 min
 Response: 176612662
 Conc: 52.86 ng/ml

Instrument :
 ECD_O
 ClientSampleId :
 AR1248CCC500

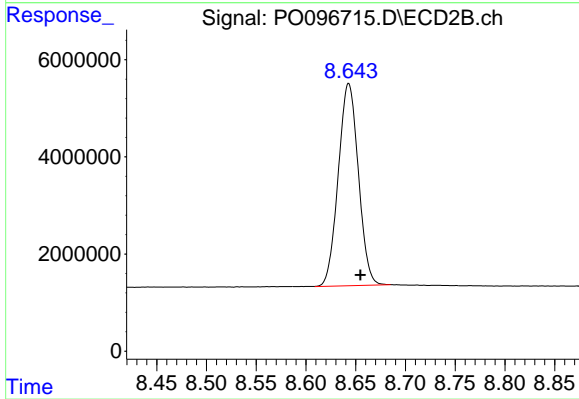
Manual Integrations
APPROVED
 Reviewed By :Yogesh Patel 08/07/2023
 Supervised By :Ankita Jodhani 08/07/2023



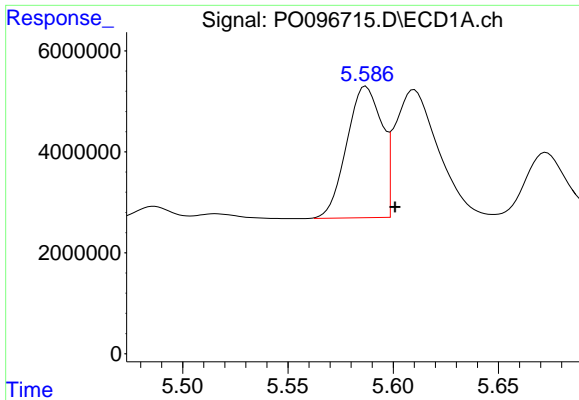
#1 Tetrachloro-m-xylene
 R.T.: 3.621 min
 Delta R.T.: -0.006 min
 Response: 72246867
 Conc: 51.00 ng/ml



#2 Decachlorobiphenyl
 R.T.: 10.328 min
 Delta R.T.: 0.076 min
 Response: 114270056
 Conc: 51.65 ng/ml m



#2 Decachlorobiphenyl
 R.T.: 8.643 min
 Delta R.T.: -0.012 min
 Response: 58503885
 Conc: 49.74 ng/ml m



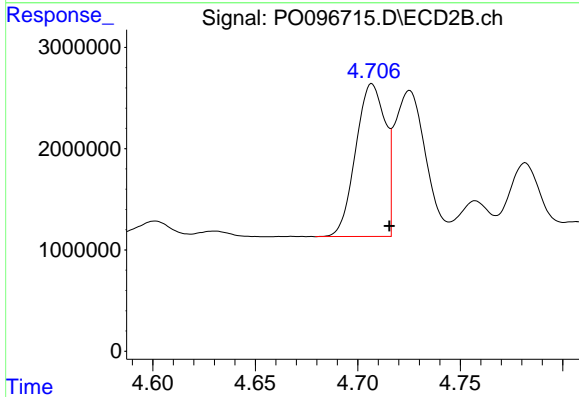
#21 AR-1248-1

R.T.: 5.586 min
 Delta R.T.: -0.014 min
 Response: 32167925
 Conc: 560.14 ng/ml

Instrument :
 ECD_O
 ClientSampleId :
 AR1248CCC500

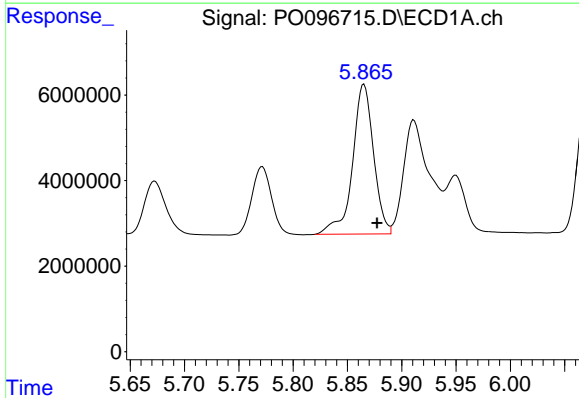
Manual Integrations
 APPROVED

Reviewed By :Yogesh Patel 08/07/2023
 Supervised By :Ankita Jodhani 08/07/2023



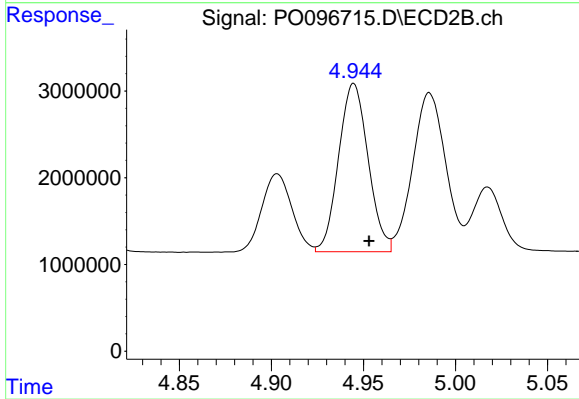
#21 AR-1248-1

R.T.: 4.707 min
 Delta R.T.: -0.009 min
 Response: 15136027
 Conc: 541.80 ng/ml



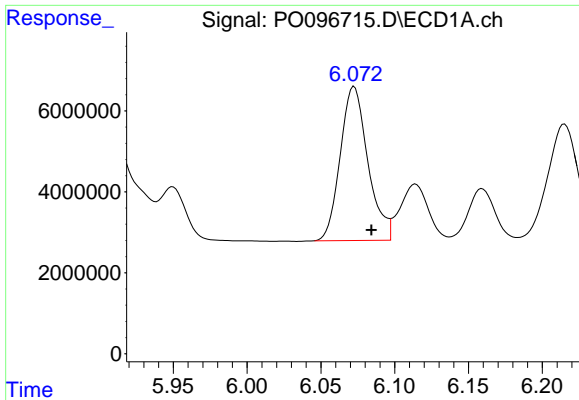
#22 AR-1248-2

R.T.: 5.865 min
 Delta R.T.: -0.012 min
 Response: 47119409
 Conc: 508.07 ng/ml



#22 AR-1248-2

R.T.: 4.945 min
 Delta R.T.: -0.008 min
 Response: 21630053
 Conc: 513.04 ng/ml



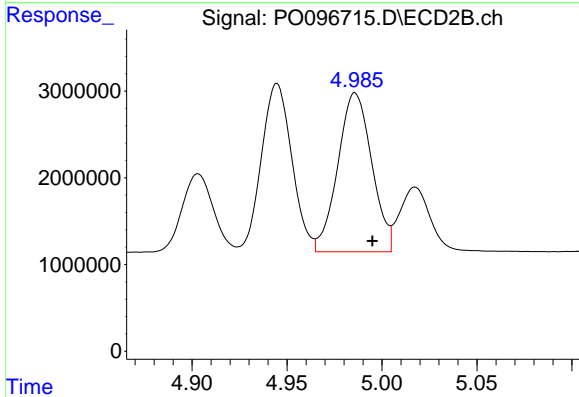
#23 AR-1248-3

R.T.: 6.073 min
 Delta R.T.: -0.012 min
 Response: 49566094
 Conc: 503.06 ng/ml

Instrument :
 ECD_O
 ClientSampleId :
 AR1248CCC500

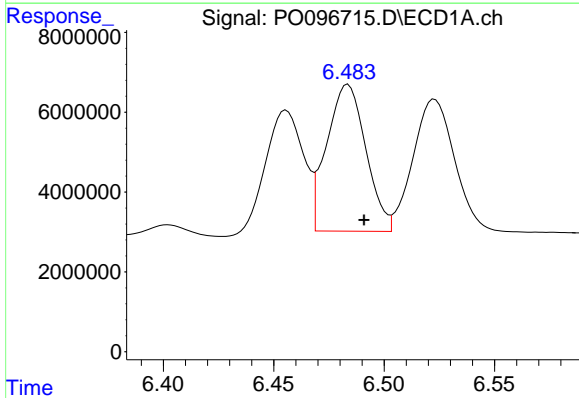
Manual Integrations
 APPROVED

Reviewed By :Yogesh Patel 08/07/2023
 Supervised By :Ankita Jodhani 08/07/2023



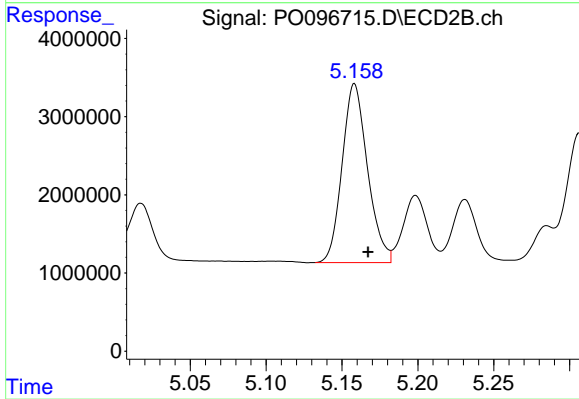
#23 AR-1248-3

R.T.: 4.986 min
 Delta R.T.: -0.009 min
 Response: 22802456
 Conc: 518.96 ng/ml



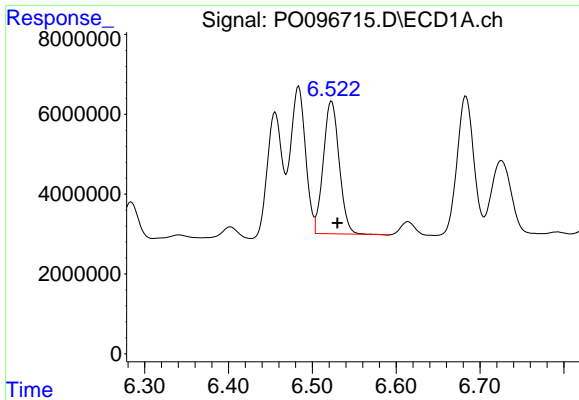
#24 AR-1248-4

R.T.: 6.484 min
 Delta R.T.: -0.007 min
 Response: 45391619
 Conc: 488.96 ng/ml



#24 AR-1248-4

R.T.: 5.158 min
 Delta R.T.: -0.010 min
 Response: 26766734
 Conc: 522.08 ng/ml m



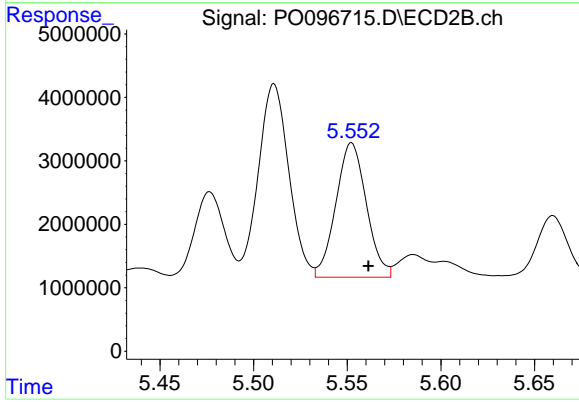
#25 AR-1248-5

R.T.: 6.523 min
 Delta R.T.: -0.007 min
 Response: 43817628
 Conc: 474.48 ng/ml

Instrument :
 ECD_O
 ClientSampleId :
 AR1248CCC500

Manual Integrations
 APPROVED

Reviewed By :Yogesh Patel 08/07/2023
 Supervised By :Ankita Jodhani 08/07/2023



#25 AR-1248-5

R.T.: 5.552 min
 Delta R.T.: -0.009 min
 Response: 23988410
 Conc: 511.06 ng/ml