

Data Path : Z:\pestpcbsrv\HPCHEM1\ECD_0\Data\P0080521\
 Data File : P0080236.D
 Signal(s) : Signal #1: ECD1A.CH Signal #2: ECD2B.CH
 Acq On : 06 Aug 2021 00:37
 Operator : DD\AJ
 Sample : M3279-09MSD
 Misc :
 ALS Vial : 41 Sample Multiplier: 1

Instrument :
 ECD_0
 ClientSampleId :
 20210589-AMENDED-COM-3MSD

Integration File signal 1: autoint1.e
 Integration File signal 2: autoint2.e
 Quant Time: Aug 06 03:52:04 2021
 Quant Method : Z:\pestpcbsrv\HPCHEM1\ECD_0\methods\P0072821.M
 Quant Title : GC EXTRACTABLES
 QLast Update : Wed Jul 28 18:45:36 2021
 Response via : Initial Calibration
 Integrator: ChemStation 6890 Scale Mode: Small noise peaks clipped

Volume Inj. : 2 µl
 Signal #1 Phase : ZB-MR1 Signal #2 Phase: ZB-MR2
 Signal #1 Info : 30Mx0.32mmx 0.50µ Signal #2 Info : 30M x 0.32mm x 0.25µm

Compound	RT#1	RT#2	Resp#1	Resp#2	ng/ml	ng/ml

System Monitoring Compounds						
1) SA Tetrachlo...	4.995	4.113	1467746	538454	24.358	23.512
2) SA Decachlor...	11.099	9.516	929908	428843	19.823	20.636
Target Compounds						
3) L1 AR-1016-1	6.324	5.388	1223672	319539	556.660	339.964 #
4) L1 AR-1016-2	6.349	5.409	1883046	544814	617.184	428.240 #
5) L1 AR-1016-3	6.415	5.605	1088277	927521	578.312	1315.597 #
6) L1 AR-1016-4	6.522	5.656	878875	655212	570.000	1084.312 #
7) L1 AR-1016-5	6.839	5.889	725129	2073160	479.292	2815.075 #
8) L2 AR-1221-1	5.248	4.375	332981	46549	516.752	161.200 #
9) L2 AR-1221-2	5.348	4.476	72545	58787	157.990	274.103 #
10) L2 AR-1221-3	5.435	4.566	558633	258420	362.030	398.051
11) L3 AR-1232-1	5.435	4.566	558633	258420	392.007	428.554
12) L3 AR-1232-2	6.034	5.409	3711320	544814	5312.929	968.827 #
13) L3 AR-1232-3	6.349	5.605	1883046	927521	1412.873	3080.828 #
14) L3 AR-1232-4	6.522	5.701	878875	846513	1349.515	2973.666 #
15) L3 AR-1232-5	6.621	5.889	548003	2073160	1227.179	6903.349 #
16) L4 AR-1242-1	6.324	5.388	1223672	319539	734.194	448.675 #
17) L4 AR-1242-2	6.349	5.409	1883046	544814	818.781	562.613 #
18) L4 AR-1242-3	6.415	5.605	1088277	927521	766.613	1728.643 #
19) L4 AR-1242-4	6.522	5.701	878875	846513	774.505	1507.539 #
20) L4 AR-1242-5	7.308	6.273	97222	935681	76.578	1437.979 #
21) L5 AR-1248-1	6.324	5.388	1223672	319539	965.281	578.667 #
22) L5 AR-1248-2	6.621	5.656	548003	655212	314.340	795.270 #
23) L5 AR-1248-3	6.839	5.701	725129	846513	353.806	1020.027 #
24) L5 AR-1248-4	7.270	5.889	110011	2073160	46.995	2193.995 #
25) L5 AR-1248-5	7.308	6.316	97222	652363	42.754	711.495 #
26) L6 AR-1254-1	7.239	6.273	557042	935681	255.010	689.995 #
27) L6 AR-1254-2	7.468	6.434	625862	537901	190.593	448.604 #
28) L6 AR-1254-3	7.852	6.879	327009	491426	94.974	262.644 #
29) L6 AR-1254-4	8.148	7.104	201236	58188	79.121	49.150 #
30) L6 AR-1254-5	8.578	7.538	1907030	933238	717.077	582.583
31) L7 AR-1260-1	8.020	7.000	1185225	689676	483.084	532.830
32) L7 AR-1260-2	8.287	7.199	1561088	796979	507.973	520.983
33) L7 AR-1260-3	8.653	7.357	968496	746044	436.791	510.968
34) L7 AR-1260-4	8.885	7.846	1197649	533827	466.542	450.499
35) L7 AR-1260-5	9.219	8.096	2258024	1218237	441.629	461.161
36) L8 AR-1262-1	8.653	7.538	968496	933238	302.871	1108.687 #
37) L8 AR-1262-2	9.219	8.096	2258024	1218237	416.923	453.707
38) L8 AR-1262-3	9.562	8.386	1464390	243624	387.184	219.346 #
39) L8 AR-1262-4	0.000	8.450	0	873959	N.D.	437.110 #
40) L8 AR-1262-5	10.322	8.956	554959	277797	291.846	284.785
41) L9 AR-1268-1	9.562f	8.386	1464390	243624	226.193	80.180 #
42) L9 AR-1268-2	0.000	8.450	0	873959	N.D.	321.198 #

Data Path : Z:\pestpcbsrv\HPCHEM1\ECD_0\Data\P0080521\
 Data File : P0080236.D
 Signal(s) : Signal #1: ECD1A.CH Signal #2: ECD2B.CH
 Acq On : 06 Aug 2021 00:37
 Operator : DD\AJ
 Sample : M3279-09MSD
 Misc :
 ALS Vial : 41 Sample Multiplier: 1

Instrument :
 ECD_0
 ClientSampleId :
 20210589-AMENDED-COM-3MSD

Integration File signal 1: autoint1.e
 Integration File signal 2: autoint2.e
 Quant Time: Aug 06 03:52:04 2021
 Quant Method : Z:\pestpcbsrv\HPCHEM1\ECD_0\methods\P0072821.M
 Quant Title : GC EXTRACTABLES
 QLast Update : Wed Jul 28 18:45:36 2021
 Response via : Initial Calibration
 Integrator: ChemStation 6890 Scale Mode: Small noise peaks clipped

Volume Inj. : 2 µl
 Signal #1 Phase : ZB-MR1 Signal #2 Phase: ZB-MR2
 Signal #1 Info : 30Mx0.32mmx 0.50µ Signal #2 Info : 30M x 0.32mm x 0.25µm

	Compound	RT#1	RT#2	Resp#1	Resp#2	ng/ml	ng/ml
43)	L9 AR-1268-3	9.868	8.662	41098	24757	8.179	10.680 #
44)	L9 AR-1268-4	10.322	8.956	554959	277797	241.532	259.474
45)	L9 AR-1268-5	10.751	9.255	190961	88586	11.454	12.756

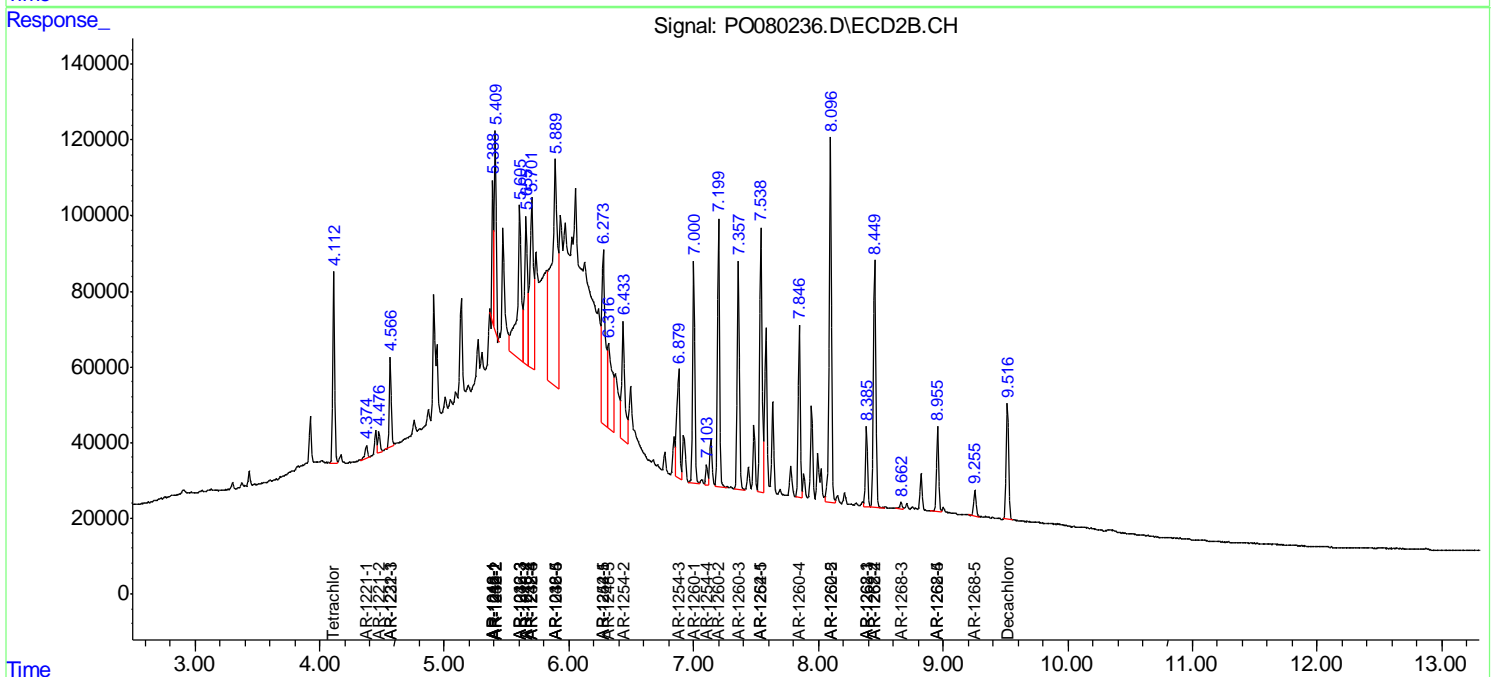
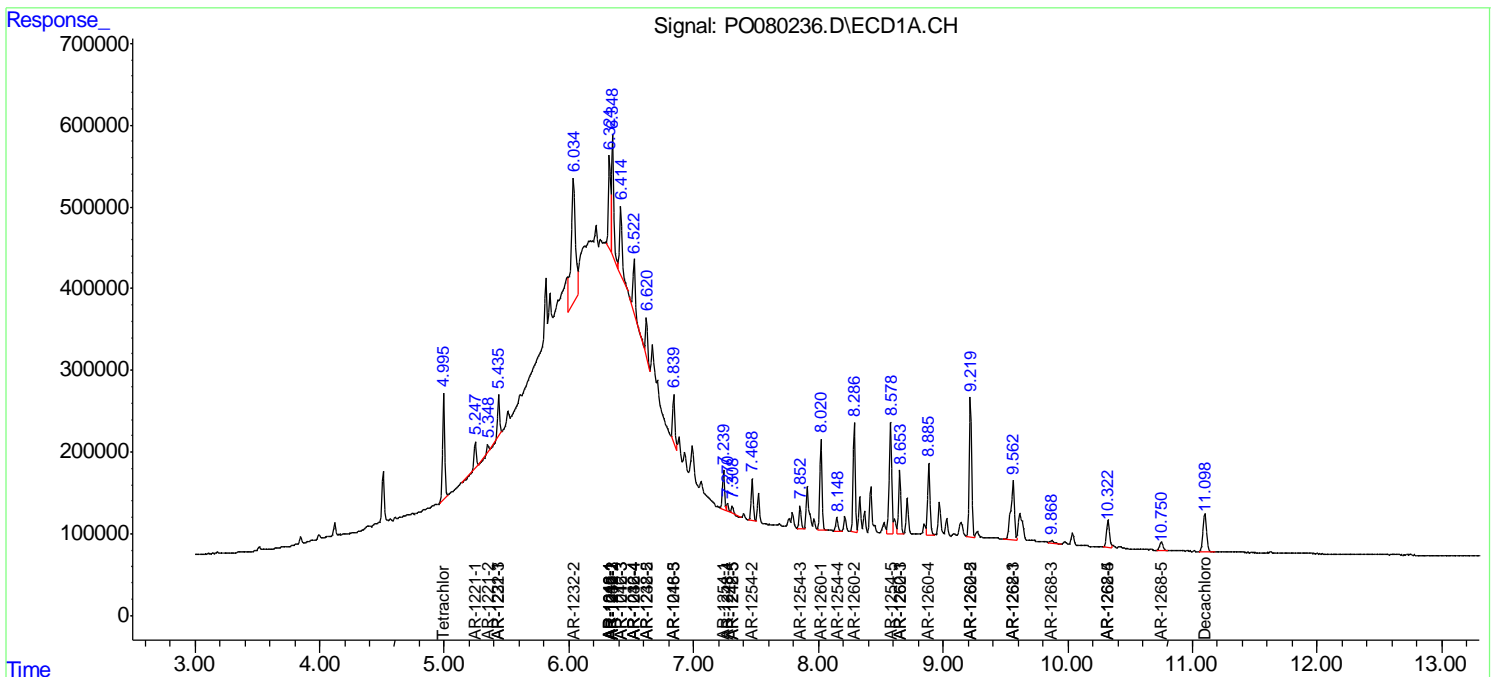
(f)=RT Delta > 1/2 Window (#)=Amounts differ by > 25% (m)=manual int.

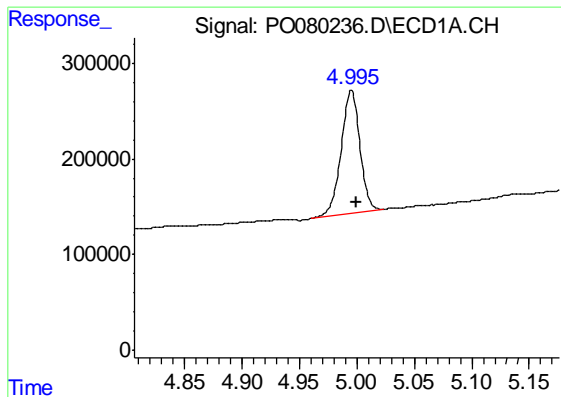
Data Path : Z:\pestpcbsrv\HPCHEM1\ECD_O\Data\PO080521\
 Data File : PO080236.D
 Signal(s) : Signal #1: ECD1A.CH Signal #2: ECD2B.CH
 Acq On : 06 Aug 2021 00:37
 Operator : DD\AJ
 Sample : M3279-09MSD
 Misc :
 ALS Vial : 41 Sample Multiplier: 1

Instrument :
 ECD_O
 Client Sampled :
 20210589-AMENDED-COM-3MSD

Integration File signal 1: autoint1.e
 Integration File signal 2: autoint2.e
 Quant Time: Aug 06 03:52:04 2021
 Quant Method : Z:\pestpcbsrv\HPCHEM1\ECD_O\methods\PO072821.M
 Quant Title : GC EXTRACTABLES
 QLast Update : Wed Jul 28 18:45:36 2021
 Response via : Initial Calibration
 Integrator: ChemStation 6890 Scale Mode: Small noise peaks clipped

Volume Inj. : 2 µl
 Signal #1 Phase : ZB-MR1 Signal #2 Phase: ZB-MR2
 Signal #1 Info : 30Mx0.32mmx 0.50µ Signal #2 Info : 30M x 0.32mm x 0.25µm

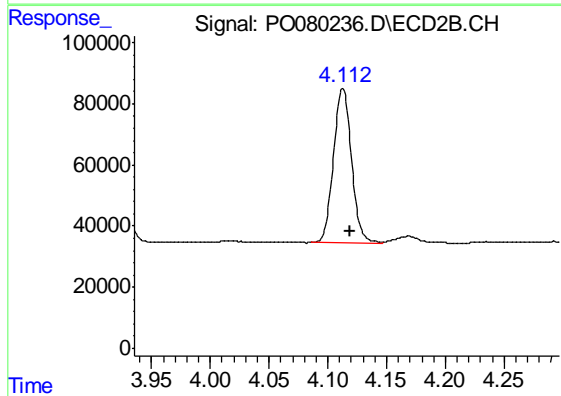




#1 Tetrachloro-m-xylene

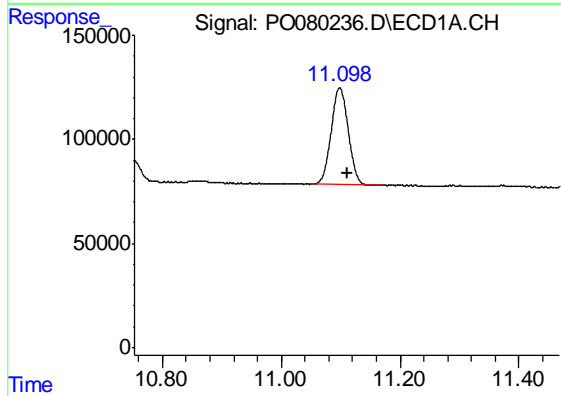
R.T.: 4.995 min
 Delta R.T.: -0.005 min
 Response: 1467746
 Conc: 24.36 ng/ml

Instrument :
 ECD_O
 ClientSampleId :
 20210589-AMENDED-COM-3MSD



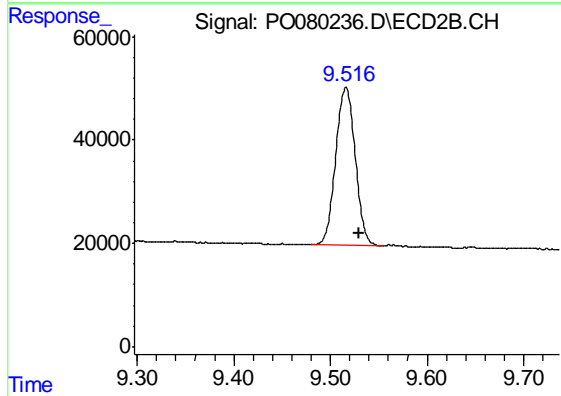
#1 Tetrachloro-m-xylene

R.T.: 4.113 min
 Delta R.T.: -0.007 min
 Response: 538454
 Conc: 23.51 ng/ml



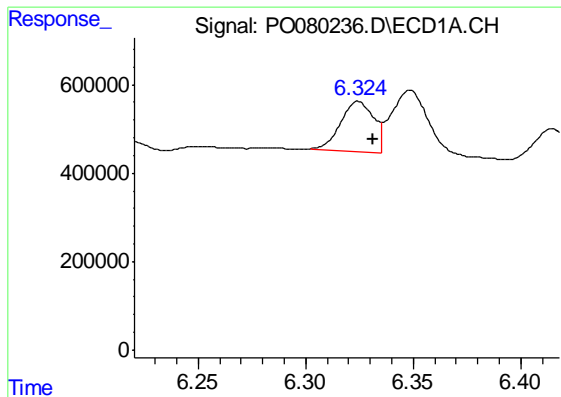
#2 Decachlorobiphenyl

R.T.: 11.099 min
 Delta R.T.: -0.012 min
 Response: 929908
 Conc: 19.82 ng/ml



#2 Decachlorobiphenyl

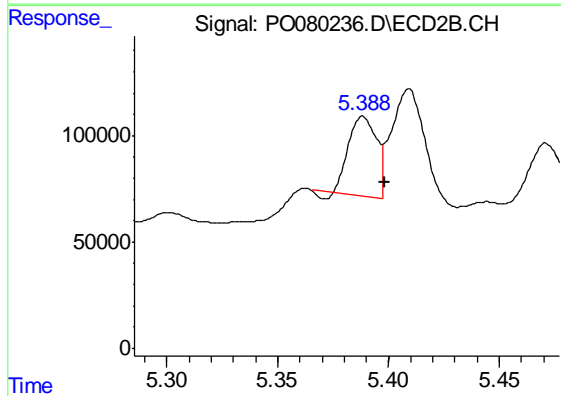
R.T.: 9.516 min
 Delta R.T.: -0.013 min
 Response: 428843
 Conc: 20.64 ng/ml



#3 AR-1016-1

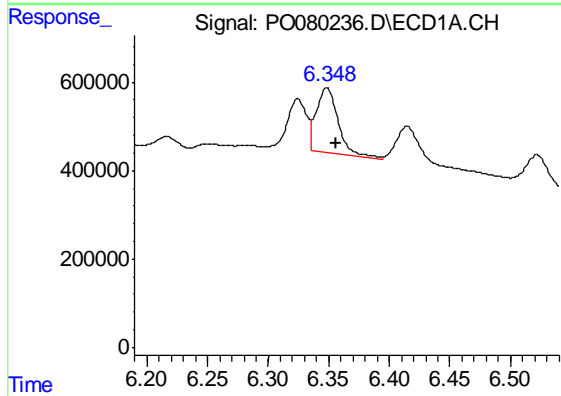
R.T.: 6.324 min
 Delta R.T.: -0.007 min
 Response: 1223672
 Conc: 556.66 ng/ml

Instrument :
 ECD_O
 ClientSampleId :
 20210589-AMENDED-COM-3MSD



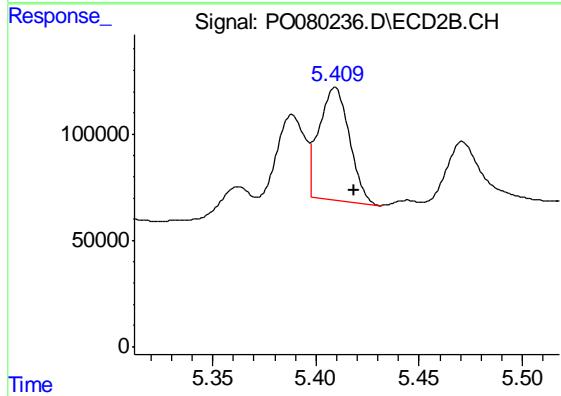
#3 AR-1016-1

R.T.: 5.388 min
 Delta R.T.: -0.010 min
 Response: 319539
 Conc: 339.96 ng/ml



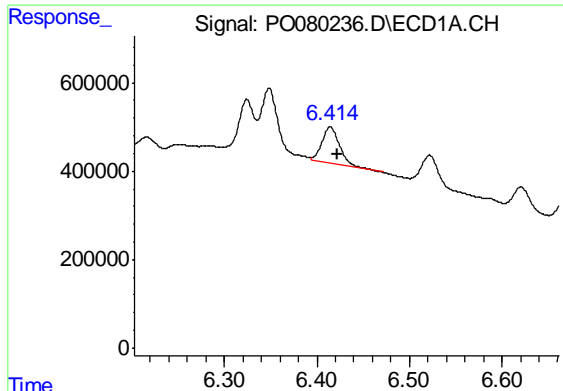
#4 AR-1016-2

R.T.: 6.349 min
 Delta R.T.: -0.007 min
 Response: 1883046
 Conc: 617.18 ng/ml



#4 AR-1016-2

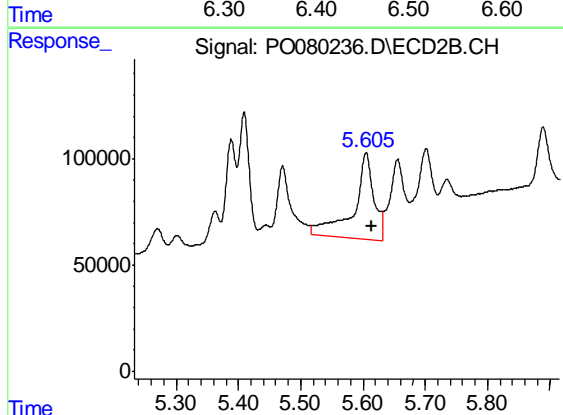
R.T.: 5.409 min
 Delta R.T.: -0.010 min
 Response: 544814
 Conc: 428.24 ng/ml



#5 AR-1016-3

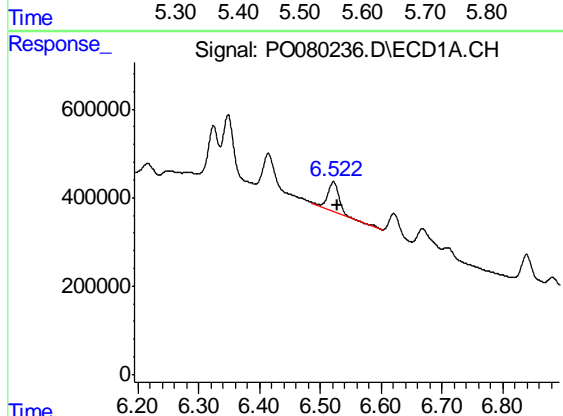
R.T.: 6.415 min
 Delta R.T.: -0.007 min
 Response: 1088277
 Conc: 578.31 ng/ml

Instrument :
 ECD_O
 ClientSampleId :
 20210589-AMENDED-COM-3MSD



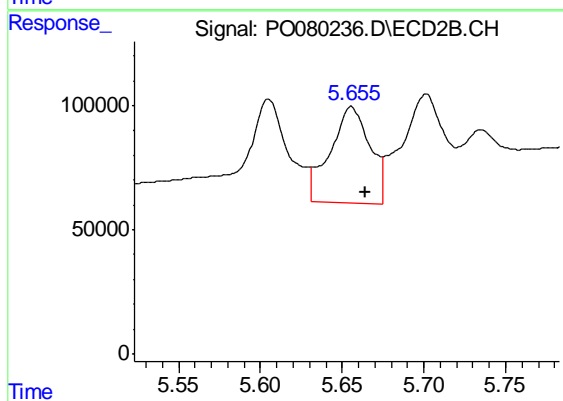
#5 AR-1016-3

R.T.: 5.605 min
 Delta R.T.: -0.009 min
 Response: 927521
 Conc: 1315.60 ng/ml



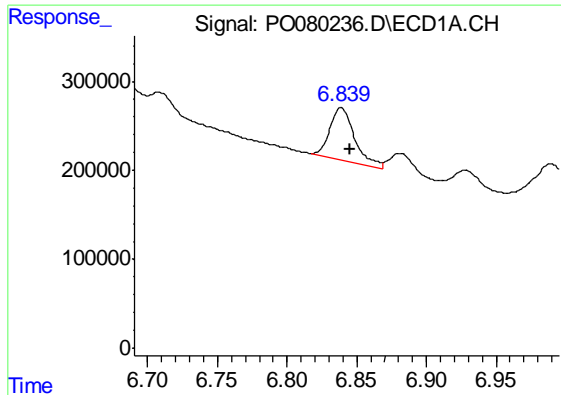
#6 AR-1016-4

R.T.: 6.522 min
 Delta R.T.: -0.007 min
 Response: 878875
 Conc: 570.00 ng/ml



#6 AR-1016-4

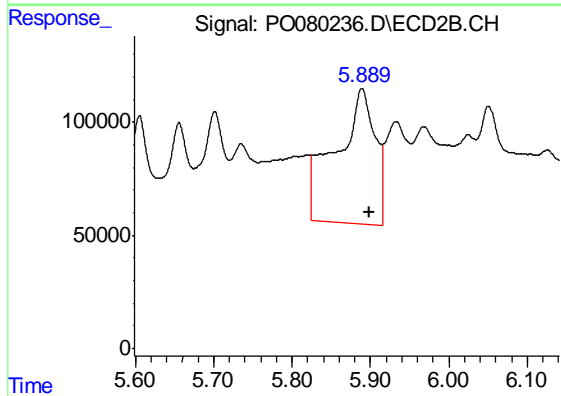
R.T.: 5.656 min
 Delta R.T.: -0.009 min
 Response: 655212
 Conc: 1084.31 ng/ml



#7 AR-1016-5

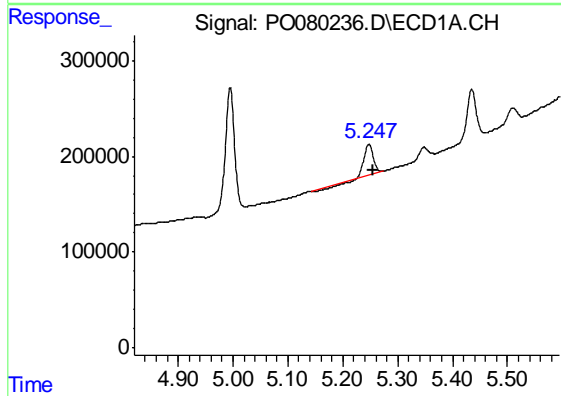
R.T.: 6.839 min
 Delta R.T.: -0.007 min
 Response: 725129
 Conc: 479.29 ng/ml

Instrument :
 ECD_O
 ClientSampleId :
 20210589-AMENDED-COM-3MSD



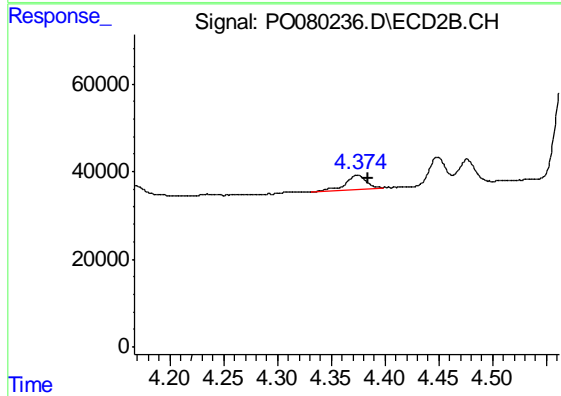
#7 AR-1016-5

R.T.: 5.889 min
 Delta R.T.: -0.010 min
 Response: 2073160
 Conc: 2815.08 ng/ml



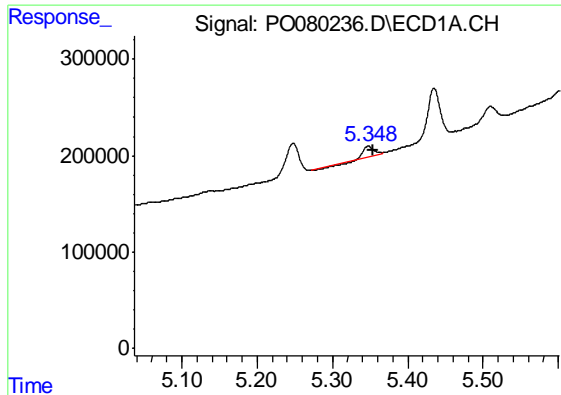
#8 AR-1221-1

R.T.: 5.248 min
 Delta R.T.: -0.007 min
 Response: 332981
 Conc: 516.75 ng/ml



#8 AR-1221-1

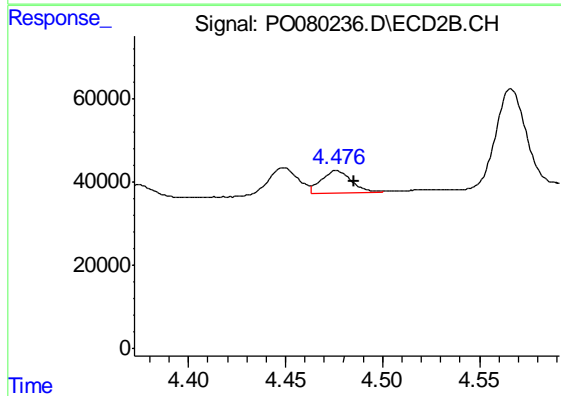
R.T.: 4.375 min
 Delta R.T.: -0.009 min
 Response: 46549
 Conc: 161.20 ng/ml



#9 AR-1221-2

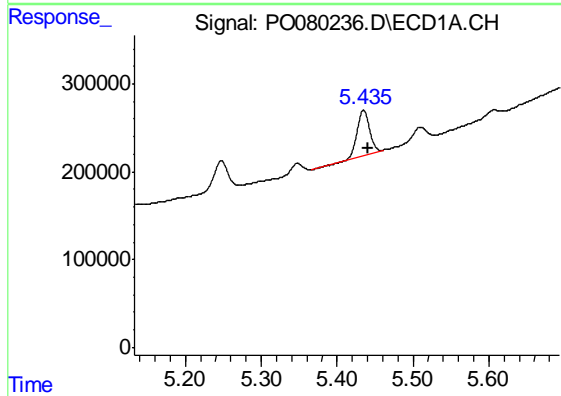
R.T.: 5.348 min
 Delta R.T.: -0.006 min
 Response: 72545
 Conc: 157.99 ng/ml

Instrument :
 ECD_O
 ClientSampleId :
 20210589-AMENDED-COM-3MSD



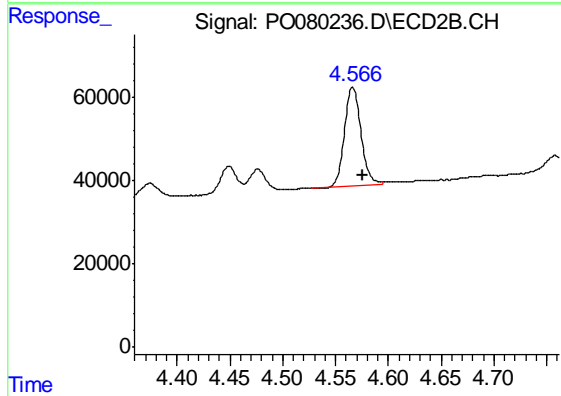
#9 AR-1221-2

R.T.: 4.476 min
 Delta R.T.: -0.009 min
 Response: 58787
 Conc: 274.10 ng/ml



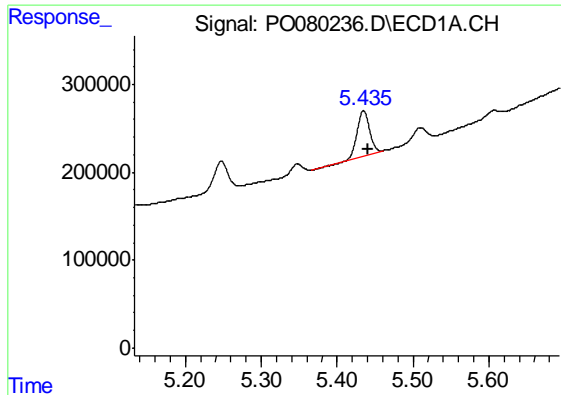
#10 AR-1221-3

R.T.: 5.435 min
 Delta R.T.: -0.006 min
 Response: 558633
 Conc: 362.03 ng/ml



#10 AR-1221-3

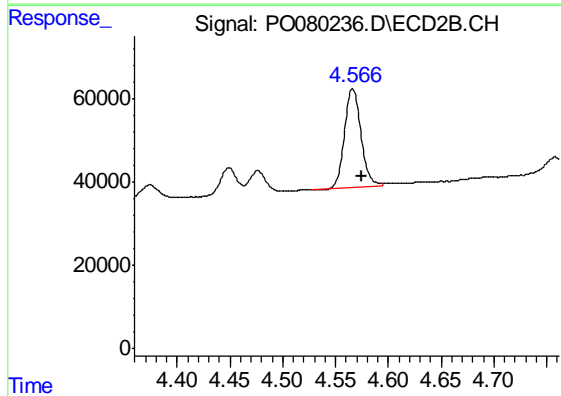
R.T.: 4.566 min
 Delta R.T.: -0.009 min
 Response: 258420
 Conc: 398.05 ng/ml



#11 AR-1232-1

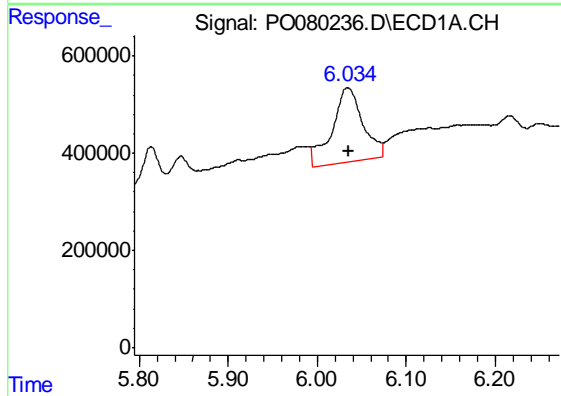
R.T.: 5.435 min
 Delta R.T.: -0.006 min
 Response: 558633
 Conc: 392.01 ng/ml

Instrument :
 ECD_O
 ClientSampleId :
 20210589-AMENDED-COM-3MSD



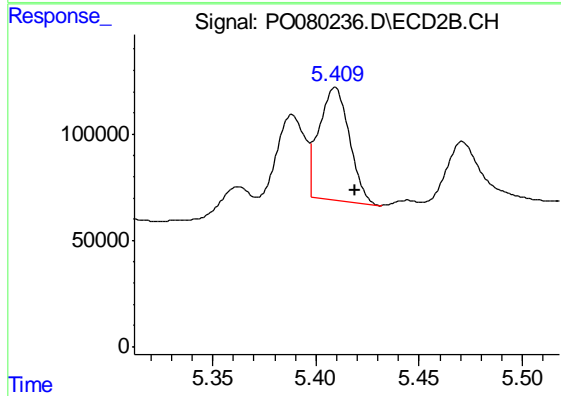
#11 AR-1232-1

R.T.: 4.566 min
 Delta R.T.: -0.009 min
 Response: 258420
 Conc: 428.55 ng/ml



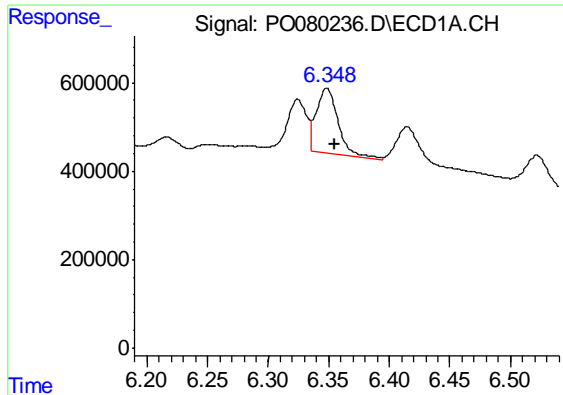
#12 AR-1232-2

R.T.: 6.034 min
 Delta R.T.: 0.000 min
 Response: 3711320
 Conc: 5312.93 ng/ml



#12 AR-1232-2

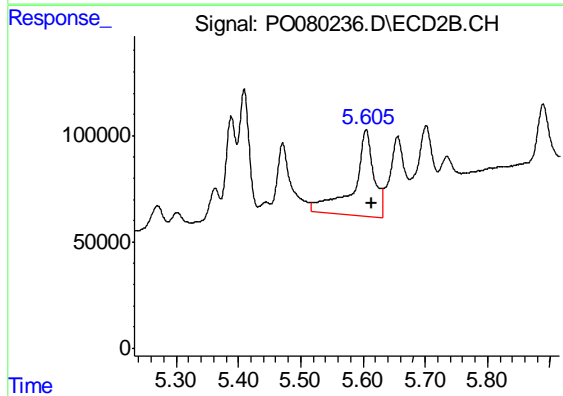
R.T.: 5.409 min
 Delta R.T.: -0.010 min
 Response: 544814
 Conc: 968.83 ng/ml



#13 AR-1232-3

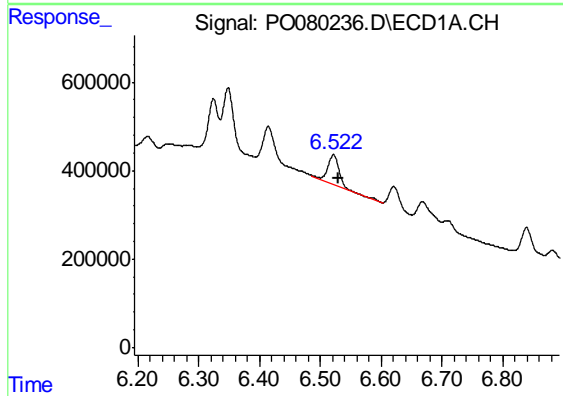
R.T.: 6.349 min
 Delta R.T.: -0.007 min
 Response: 1883046
 Conc: 1412.87 ng/ml

Instrument :
 ECD_O
 ClientSampleId :
 20210589-AMENDED-COM-3MSD



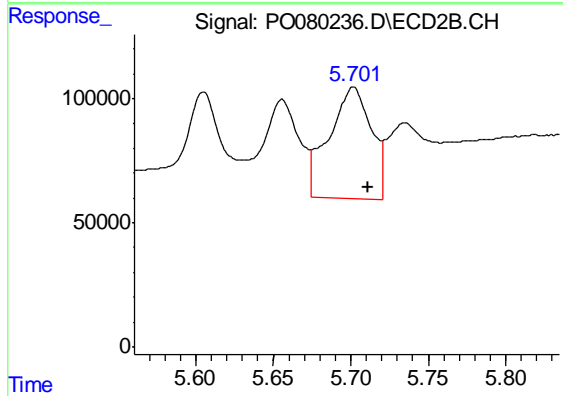
#13 AR-1232-3

R.T.: 5.605 min
 Delta R.T.: -0.010 min
 Response: 927521
 Conc: 3080.83 ng/ml



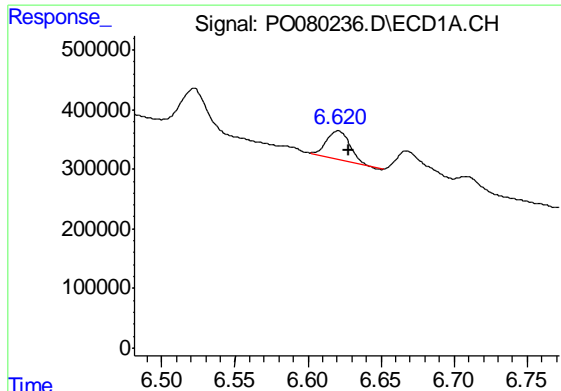
#14 AR-1232-4

R.T.: 6.522 min
 Delta R.T.: -0.008 min
 Response: 878875
 Conc: 1349.51 ng/ml



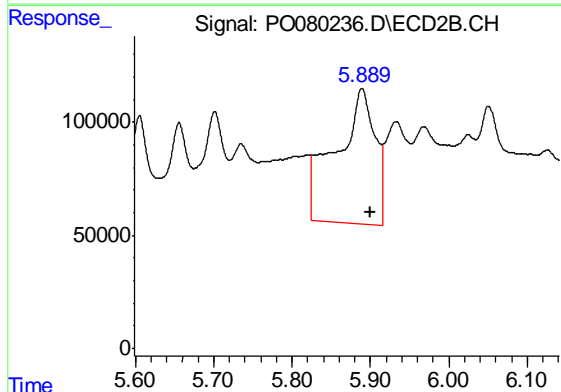
#14 AR-1232-4

R.T.: 5.701 min
 Delta R.T.: -0.009 min
 Response: 846513
 Conc: 2973.67 ng/ml

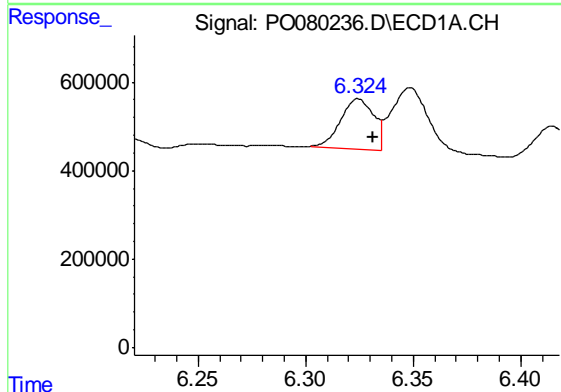


#15 AR-1232-5
 R.T.: 6.621 min
 Delta R.T.: -0.007 min
 Response: 548003
 Conc: 1227.18 ng/ml

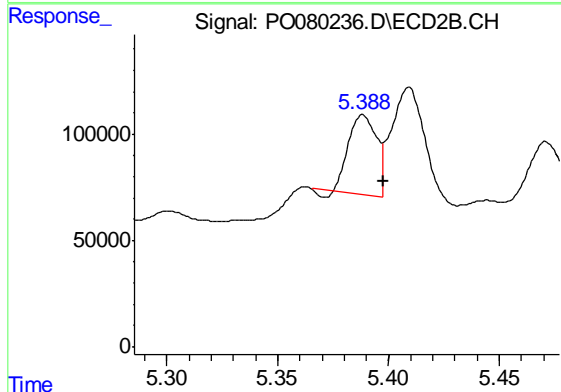
Instrument :
 ECD_O
 ClientSampleId :
 20210589-AMENDED-COM-3MSD



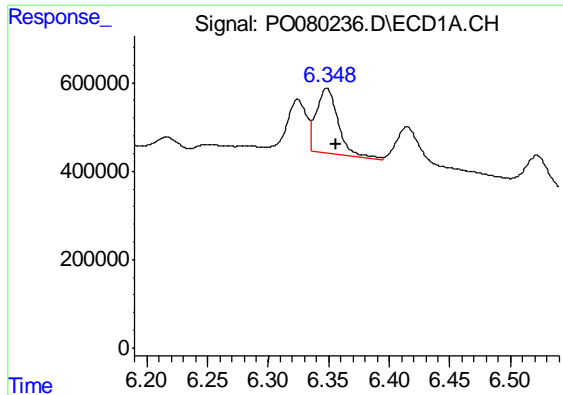
#15 AR-1232-5
 R.T.: 5.889 min
 Delta R.T.: -0.010 min
 Response: 2073160
 Conc: 6903.35 ng/ml



#16 AR-1242-1
 R.T.: 6.324 min
 Delta R.T.: -0.007 min
 Response: 1223672
 Conc: 734.19 ng/ml



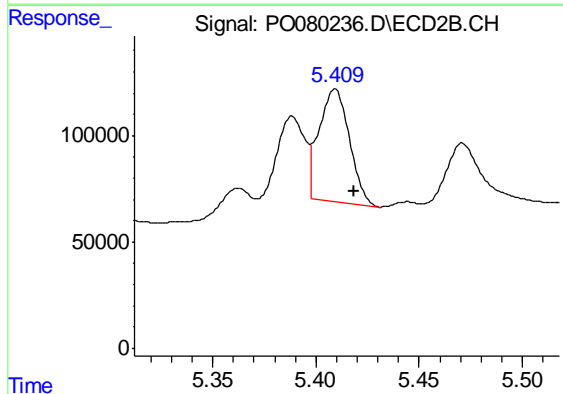
#16 AR-1242-1
 R.T.: 5.388 min
 Delta R.T.: -0.009 min
 Response: 319539
 Conc: 448.68 ng/ml



#17 AR-1242-2

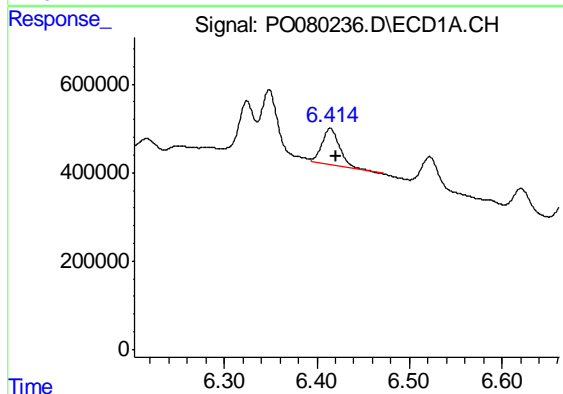
R.T.: 6.349 min
Delta R.T.: -0.007 min
Response: 1883046
Conc: 818.78 ng/ml

Instrument :
ECD_O
ClientSampleId :
20210589-AMENDED-COM-3MSD



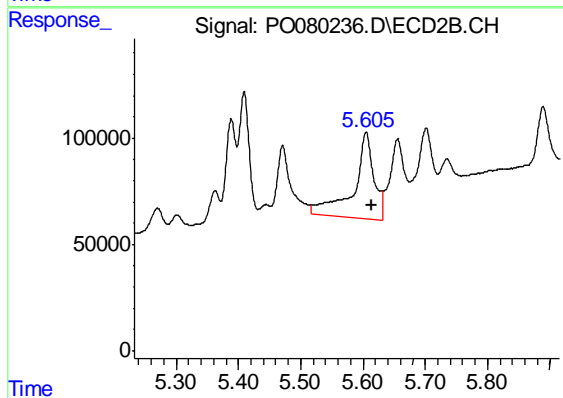
#17 AR-1242-2

R.T.: 5.409 min
Delta R.T.: -0.009 min
Response: 544814
Conc: 562.61 ng/ml



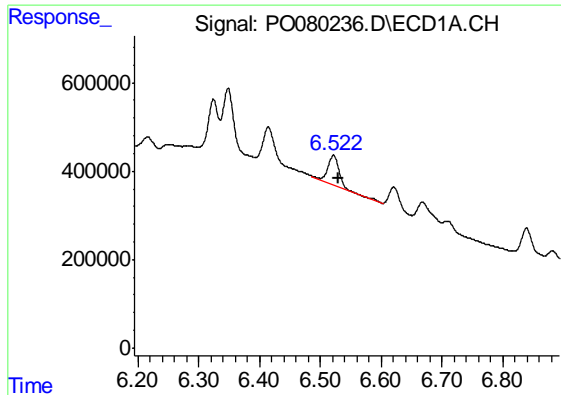
#18 AR-1242-3

R.T.: 6.415 min
Delta R.T.: -0.007 min
Response: 1088277
Conc: 766.61 ng/ml



#18 AR-1242-3

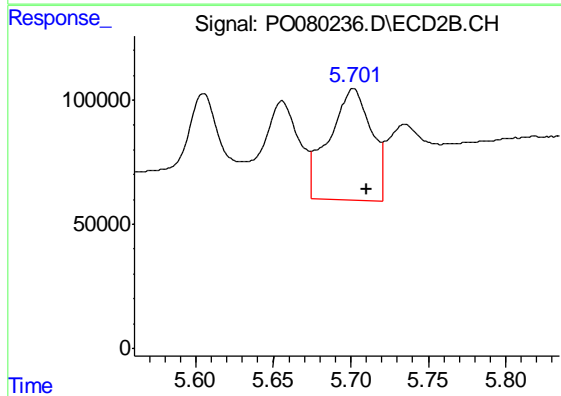
R.T.: 5.605 min
Delta R.T.: -0.009 min
Response: 927521
Conc: 1728.64 ng/ml



#19 AR-1242-4

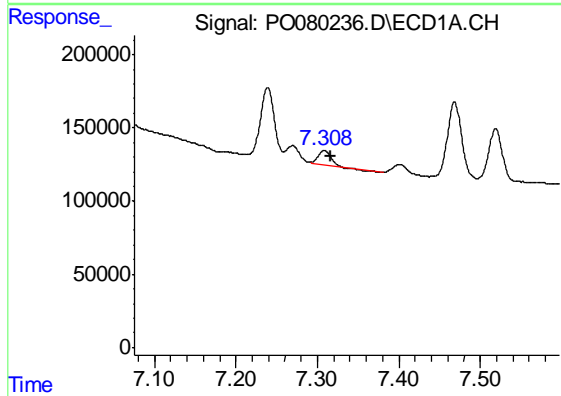
R.T.: 6.522 min
 Delta R.T.: -0.007 min
 Response: 878875
 Conc: 774.50 ng/ml

Instrument :
 ECD_O
 ClientSampleId :
 20210589-AMENDED-COM-3MSD



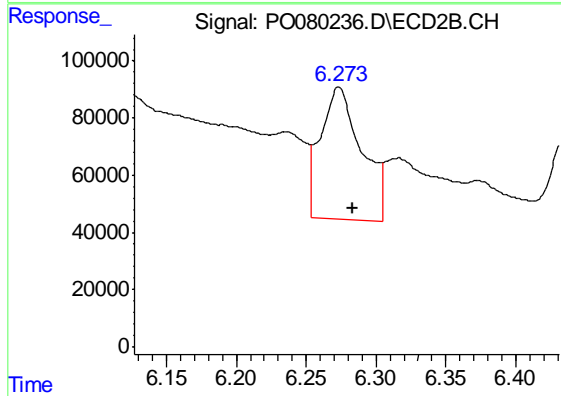
#19 AR-1242-4

R.T.: 5.701 min
 Delta R.T.: -0.009 min
 Response: 846513
 Conc: 1507.54 ng/ml



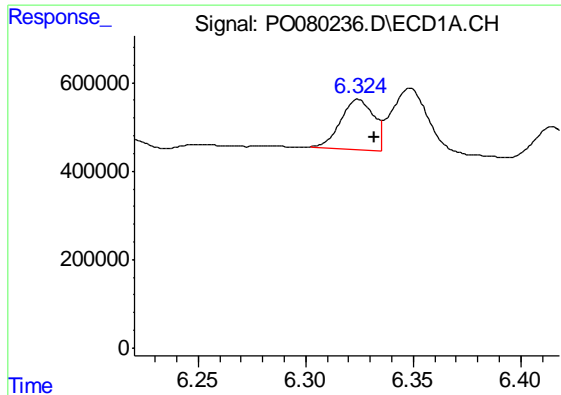
#20 AR-1242-5

R.T.: 7.308 min
 Delta R.T.: -0.008 min
 Response: 97222
 Conc: 76.58 ng/ml



#20 AR-1242-5

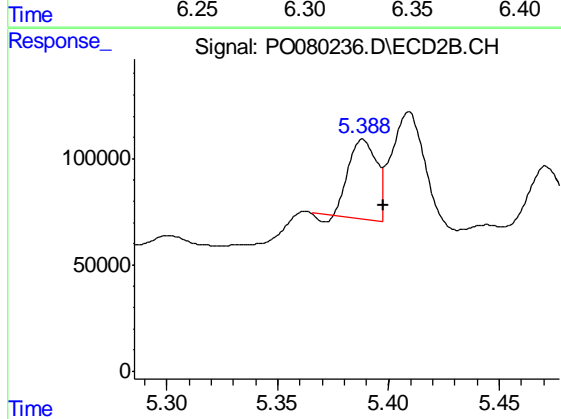
R.T.: 6.273 min
 Delta R.T.: -0.010 min
 Response: 935681
 Conc: 1437.98 ng/ml



#21 AR-1248-1

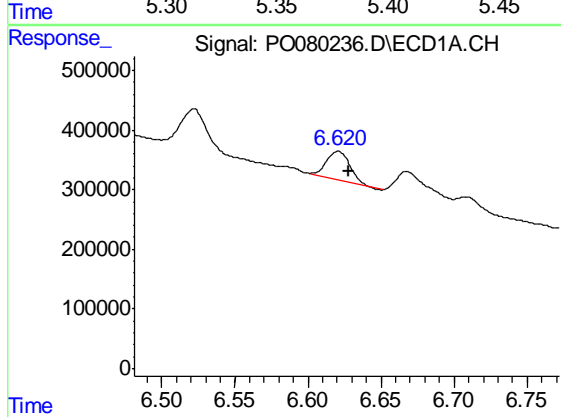
R.T.: 6.324 min
 Delta R.T.: -0.007 min
 Response: 1223672
 Conc: 965.28 ng/ml

Instrument :
 ECD_O
 ClientSampleId :
 20210589-AMENDED-COM-3MSD



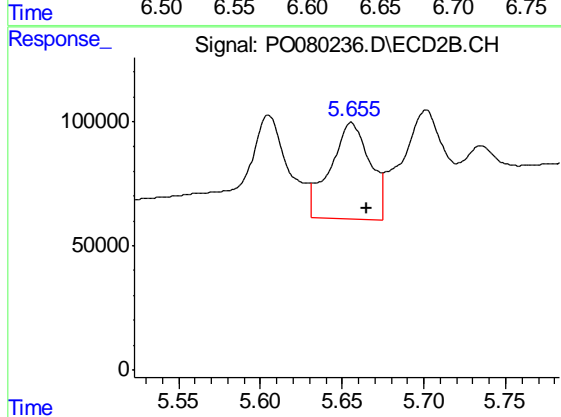
#21 AR-1248-1

R.T.: 5.388 min
 Delta R.T.: -0.009 min
 Response: 319539
 Conc: 578.67 ng/ml



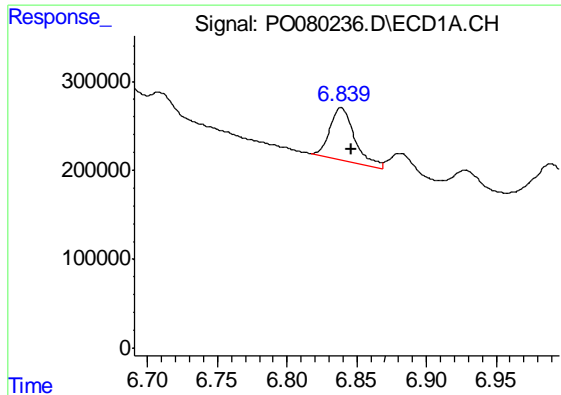
#22 AR-1248-2

R.T.: 6.621 min
 Delta R.T.: -0.007 min
 Response: 548003
 Conc: 314.34 ng/ml



#22 AR-1248-2

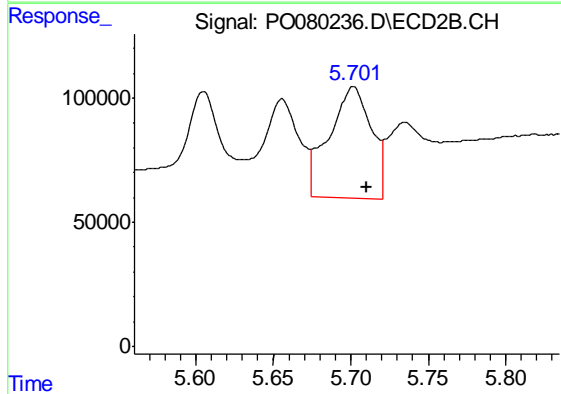
R.T.: 5.656 min
 Delta R.T.: -0.009 min
 Response: 655212
 Conc: 795.27 ng/ml



#23 AR-1248-3

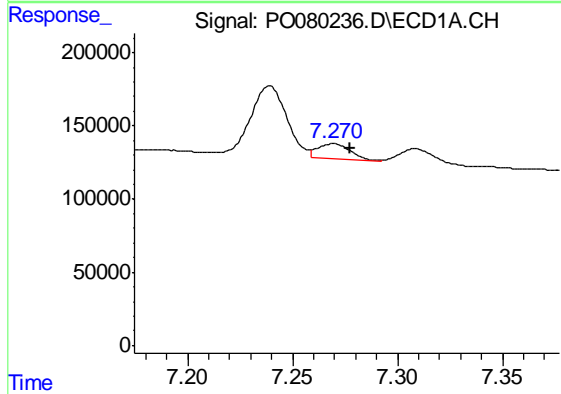
R.T.: 6.839 min
 Delta R.T.: -0.007 min
 Response: 725129
 Conc: 353.81 ng/ml

Instrument :
 ECD_O
 ClientSampleId :
 20210589-AMENDED-COM-3MSD



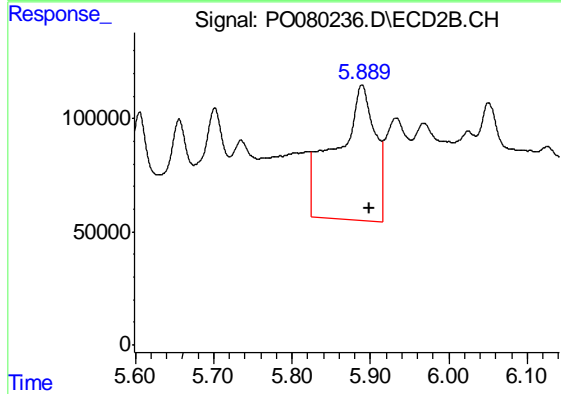
#23 AR-1248-3

R.T.: 5.701 min
 Delta R.T.: -0.009 min
 Response: 846513
 Conc: 1020.03 ng/ml



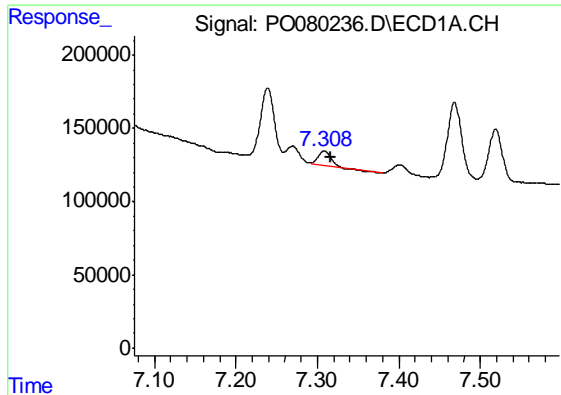
#24 AR-1248-4

R.T.: 7.270 min
 Delta R.T.: -0.008 min
 Response: 110011
 Conc: 47.00 ng/ml



#24 AR-1248-4

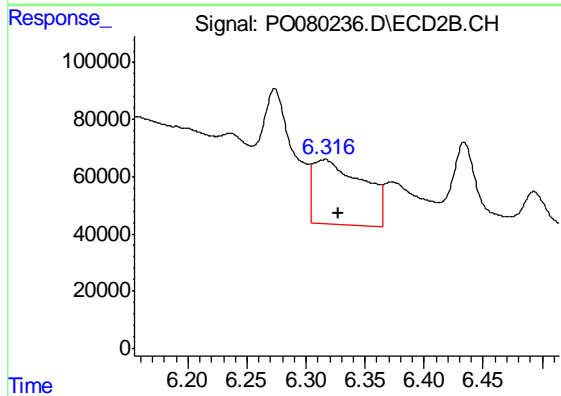
R.T.: 5.889 min
 Delta R.T.: -0.009 min
 Response: 2073160
 Conc: 2193.99 ng/ml



#25 AR-1248-5

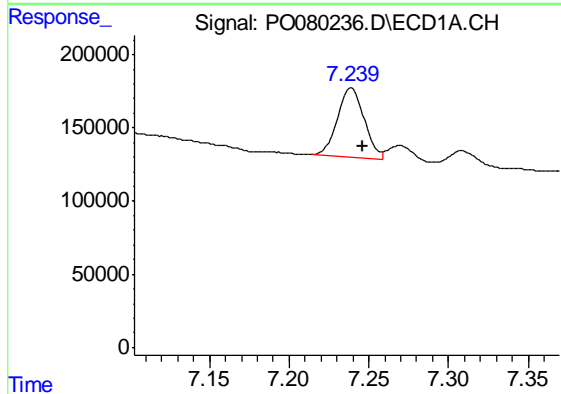
R.T.: 7.308 min
 Delta R.T.: -0.008 min
 Response: 97222
 Conc: 42.75 ng/ml

Instrument :
 ECD_O
 ClientSampleId :
 20210589-AMENDED-COM-3MSD



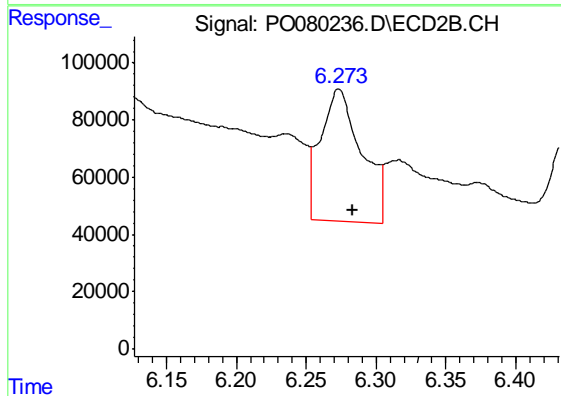
#25 AR-1248-5

R.T.: 6.316 min
 Delta R.T.: -0.011 min
 Response: 652363
 Conc: 711.50 ng/ml



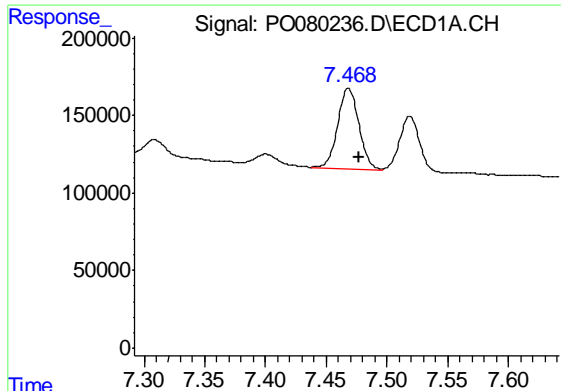
#26 AR-1254-1

R.T.: 7.239 min
 Delta R.T.: -0.008 min
 Response: 557042
 Conc: 255.01 ng/ml



#26 AR-1254-1

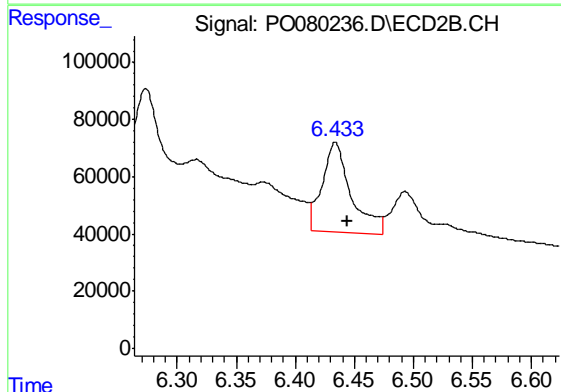
R.T.: 6.273 min
 Delta R.T.: -0.010 min
 Response: 935681
 Conc: 690.00 ng/ml



#27 AR-1254-2

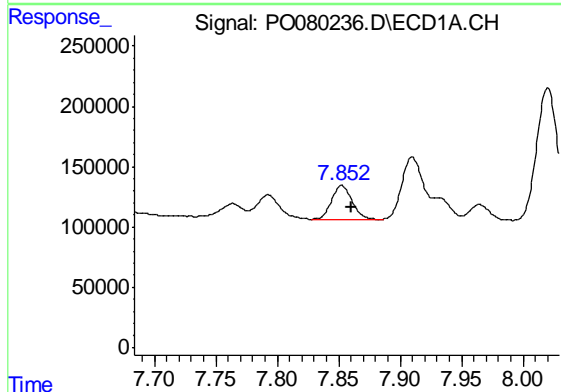
R.T.: 7.468 min
 Delta R.T.: -0.008 min
 Response: 625862
 Conc: 190.59 ng/ml

Instrument :
 ECD_O
ClientSampleId :
 20210589-AMENDED-COM-3MSD



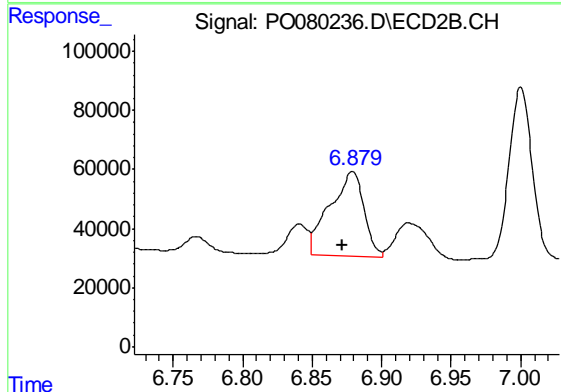
#27 AR-1254-2

R.T.: 6.434 min
 Delta R.T.: -0.010 min
 Response: 537901
 Conc: 448.60 ng/ml



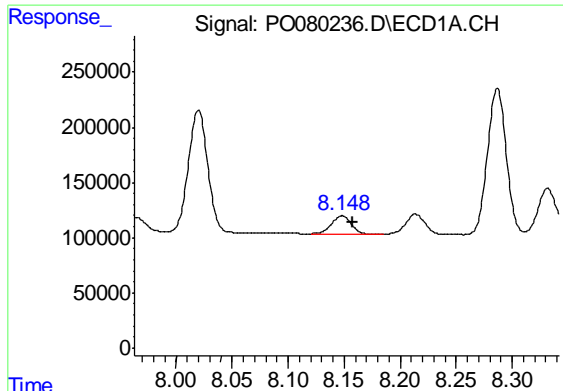
#28 AR-1254-3

R.T.: 7.852 min
 Delta R.T.: -0.008 min
 Response: 327009
 Conc: 94.97 ng/ml



#28 AR-1254-3

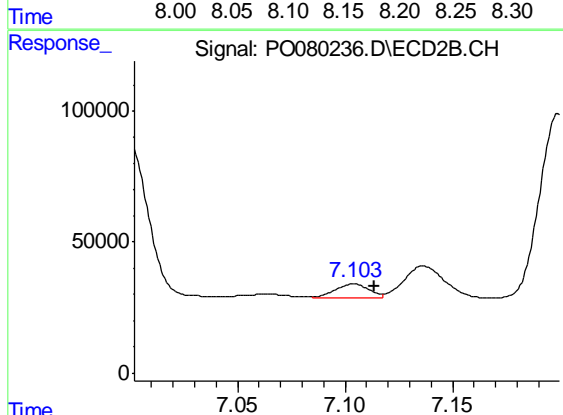
R.T.: 6.879 min
 Delta R.T.: 0.007 min
 Response: 491426
 Conc: 262.64 ng/ml



#29 AR-1254-4

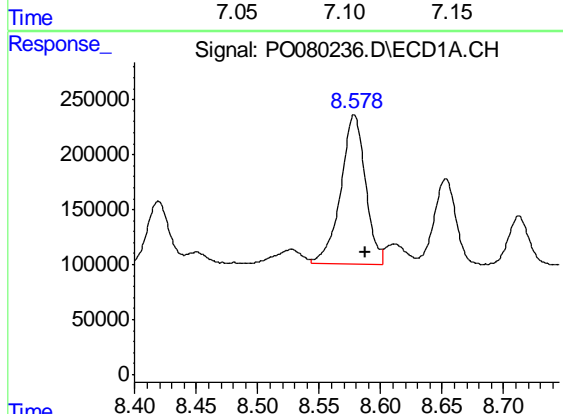
R.T.: 8.148 min
Delta R.T.: -0.009 min
Response: 201236
Conc: 79.12 ng/ml

Instrument :
ECD_O
ClientSampleId :
20210589-AMENDED-COM-3MSD



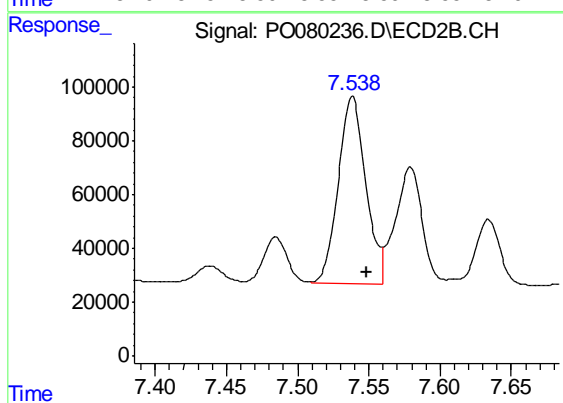
#29 AR-1254-4

R.T.: 7.104 min
Delta R.T.: -0.010 min
Response: 58188
Conc: 49.15 ng/ml



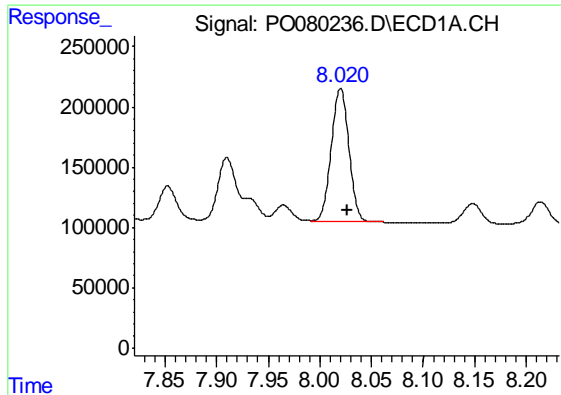
#30 AR-1254-5

R.T.: 8.578 min
Delta R.T.: -0.009 min
Response: 1907030
Conc: 717.08 ng/ml



#30 AR-1254-5

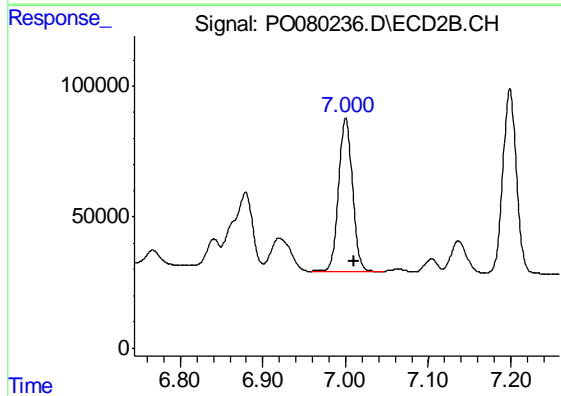
R.T.: 7.538 min
Delta R.T.: -0.011 min
Response: 933238
Conc: 582.58 ng/ml



#31 AR-1260-1

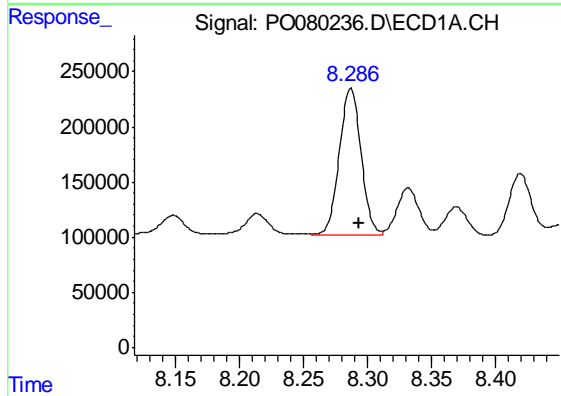
R.T.: 8.020 min
Delta R.T.: -0.007 min
Response: 1185225
Conc: 483.08 ng/ml

Instrument :
ECD_O
ClientSampleId :
20210589-AMENDED-COM-3MSD



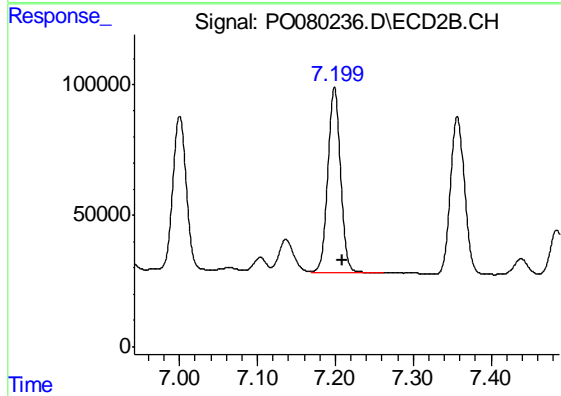
#31 AR-1260-1

R.T.: 7.000 min
Delta R.T.: -0.011 min
Response: 689676
Conc: 532.83 ng/ml



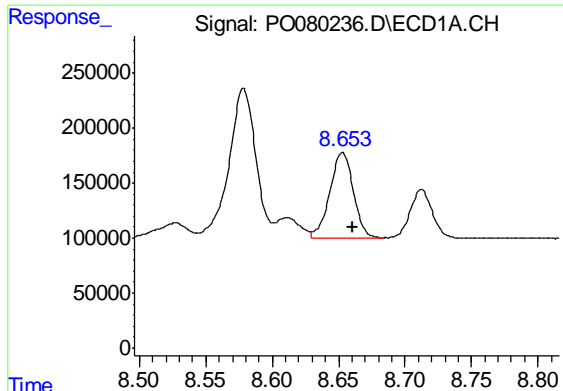
#32 AR-1260-2

R.T.: 8.287 min
Delta R.T.: -0.007 min
Response: 1561088
Conc: 507.97 ng/ml



#32 AR-1260-2

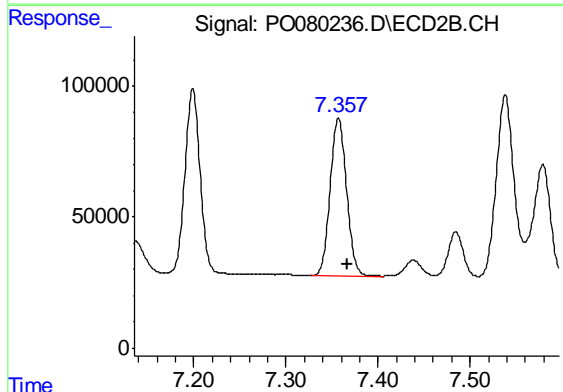
R.T.: 7.199 min
Delta R.T.: -0.010 min
Response: 796979
Conc: 520.98 ng/ml



#33 AR-1260-3

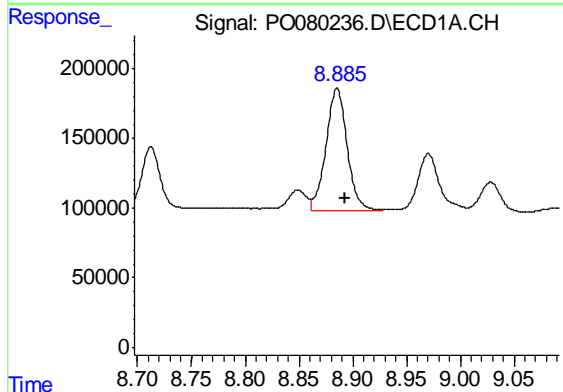
R.T.: 8.653 min
 Delta R.T.: -0.008 min
 Response: 968496
 Conc: 436.79 ng/ml

Instrument :
 ECD_O
 ClientSampleId :
 20210589-AMENDED-COM-3MSD



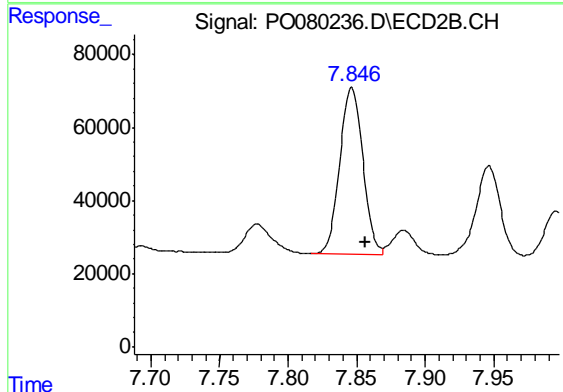
#33 AR-1260-3

R.T.: 7.357 min
 Delta R.T.: -0.010 min
 Response: 746044
 Conc: 510.97 ng/ml



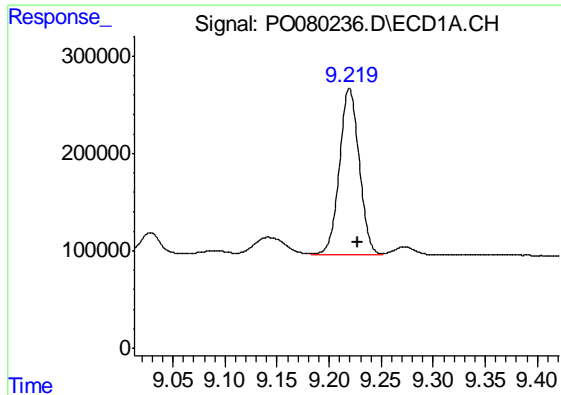
#34 AR-1260-4

R.T.: 8.885 min
 Delta R.T.: -0.007 min
 Response: 1197649
 Conc: 466.54 ng/ml



#34 AR-1260-4

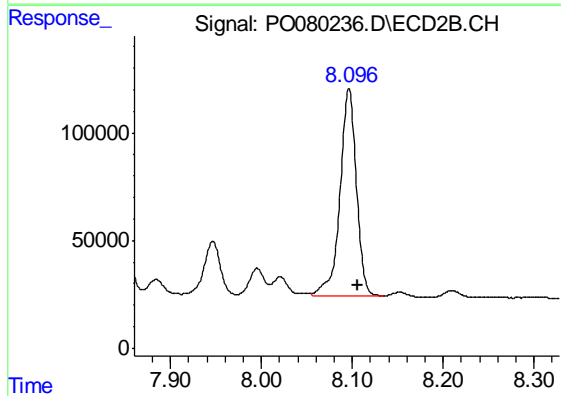
R.T.: 7.846 min
 Delta R.T.: -0.010 min
 Response: 533827
 Conc: 450.50 ng/ml



#35 AR-1260-5

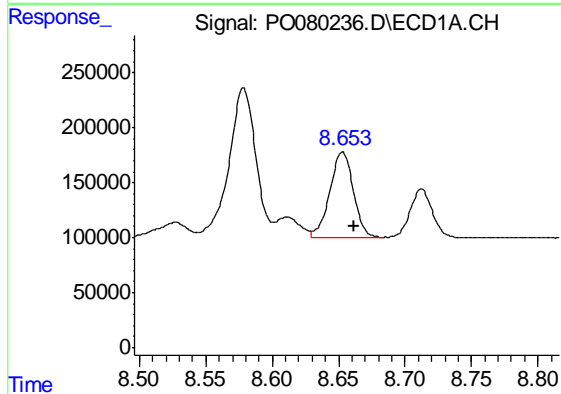
R.T.: 9.219 min
Delta R.T.: -0.007 min
Response: 2258024
Conc: 441.63 ng/ml

Instrument :
ECD_O
ClientSampleId :
20210589-AMENDED-COM-3MSD



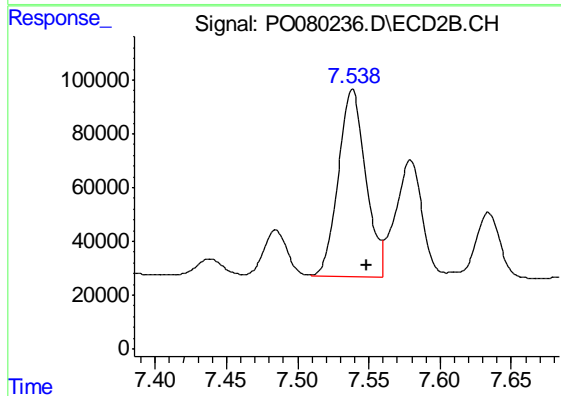
#35 AR-1260-5

R.T.: 8.096 min
Delta R.T.: -0.009 min
Response: 1218237
Conc: 461.16 ng/ml



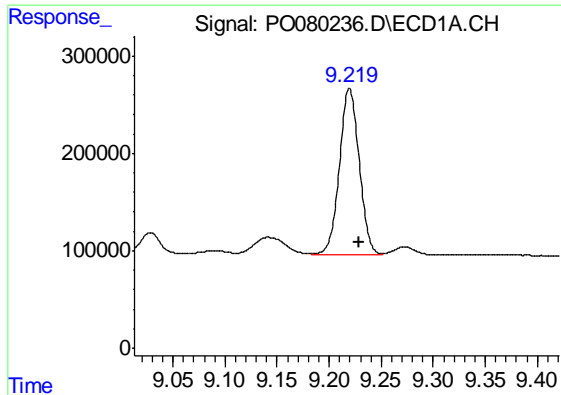
#36 AR-1262-1

R.T.: 8.653 min
Delta R.T.: -0.008 min
Response: 968496
Conc: 302.87 ng/ml



#36 AR-1262-1

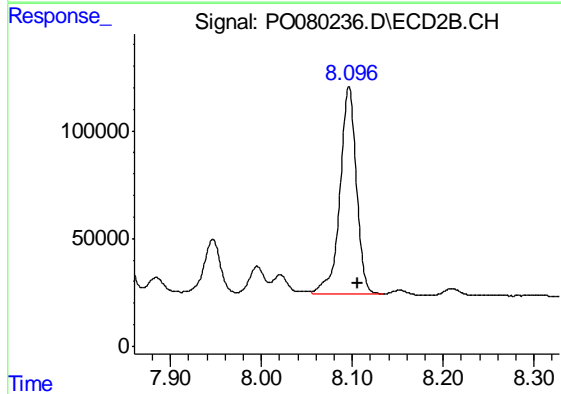
R.T.: 7.538 min
Delta R.T.: -0.010 min
Response: 933238
Conc: 1108.69 ng/ml



#37 AR-1262-2

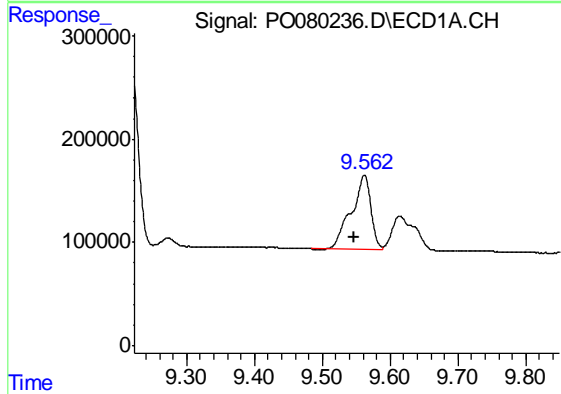
R.T.: 9.219 min
 Delta R.T.: -0.009 min
 Response: 2258024
 Conc: 416.92 ng/ml

Instrument :
 ECD_O
 ClientSampleId :
 20210589-AMENDED-COM-3MSD



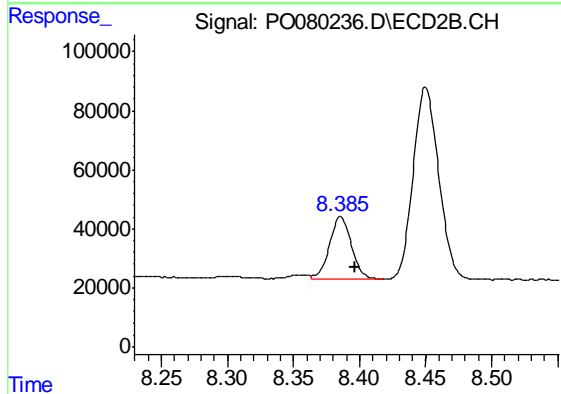
#37 AR-1262-2

R.T.: 8.096 min
 Delta R.T.: -0.010 min
 Response: 1218237
 Conc: 453.71 ng/ml



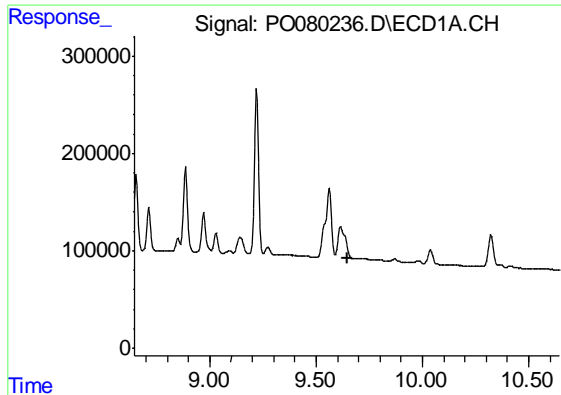
#38 AR-1262-3

R.T.: 9.562 min
 Delta R.T.: 0.015 min
 Response: 1464390
 Conc: 387.18 ng/ml



#38 AR-1262-3

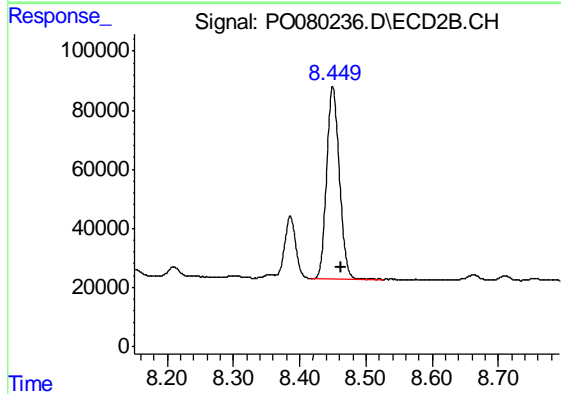
R.T.: 8.386 min
 Delta R.T.: -0.011 min
 Response: 243624
 Conc: 219.35 ng/ml



#39 AR-1262-4

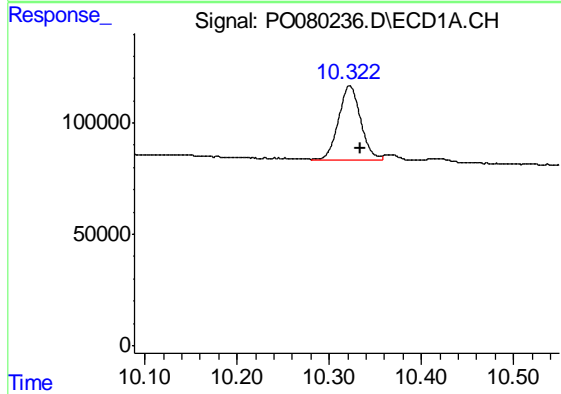
R.T.: 0.000 min
 Exp R.T. : 9.645 min
 Response: 0
 Conc: N.D.

Instrument :
 ECD_O
 ClientSampleId :
 20210589-AMENDED-COM-3MSD



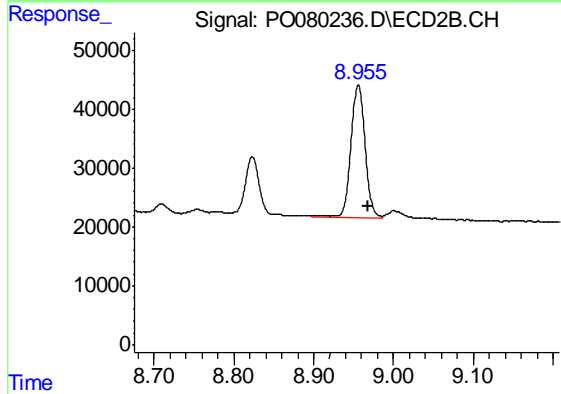
#39 AR-1262-4

R.T.: 8.450 min
 Delta R.T.: -0.012 min
 Response: 873959
 Conc: 437.11 ng/ml



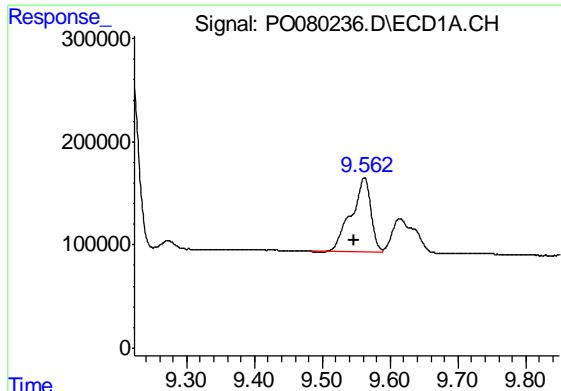
#40 AR-1262-5

R.T.: 10.322 min
 Delta R.T.: -0.012 min
 Response: 554959
 Conc: 291.85 ng/ml



#40 AR-1262-5

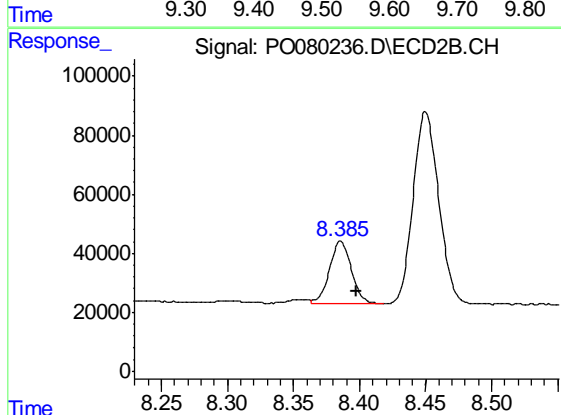
R.T.: 8.956 min
 Delta R.T.: -0.012 min
 Response: 277797
 Conc: 284.78 ng/ml



#41 AR-1268-1

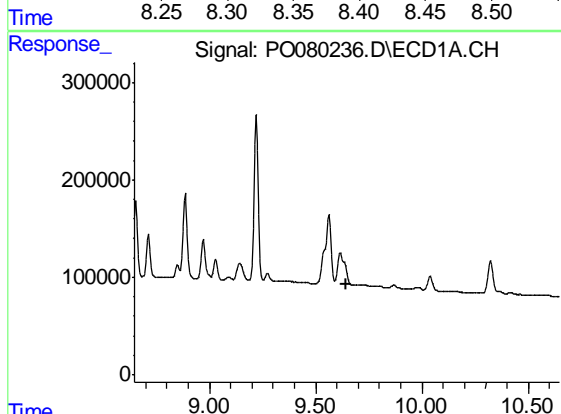
R.T.: 9.562 min
 Delta R.T.: 0.016 min
 Response: 1464390
 Conc: 226.19 ng/ml

Instrument :
 ECD_O
ClientSampleId :
 20210589-AMENDED-COM-3MSD



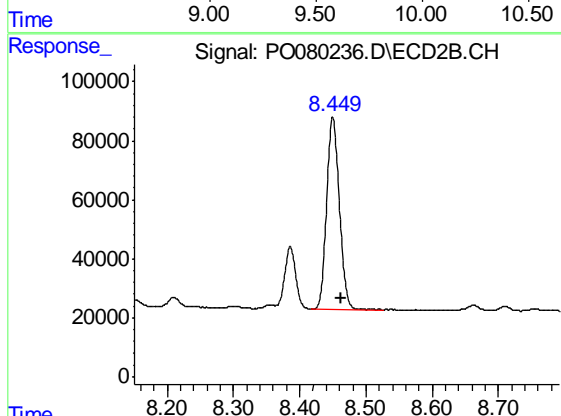
#41 AR-1268-1

R.T.: 8.386 min
 Delta R.T.: -0.012 min
 Response: 243624
 Conc: 80.18 ng/ml



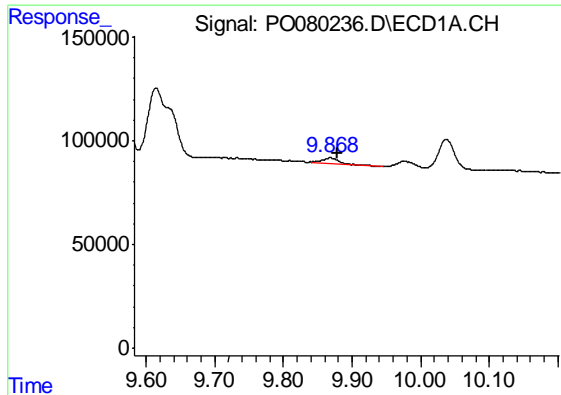
#42 AR-1268-2

R.T.: 0.000 min
 Exp R.T. : 9.646 min
 Response: 0
 Conc: N.D.



#42 AR-1268-2

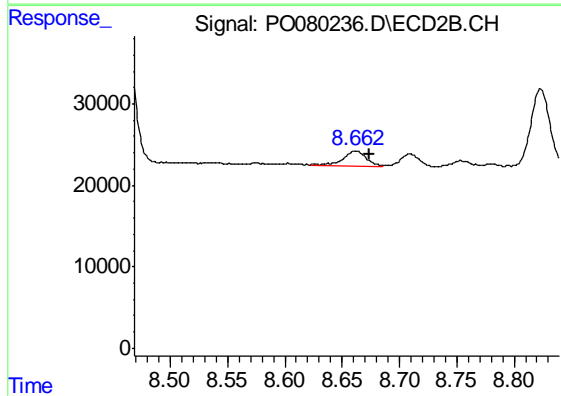
R.T.: 8.450 min
 Delta R.T.: -0.013 min
 Response: 873959
 Conc: 321.20 ng/ml



#43 AR-1268-3

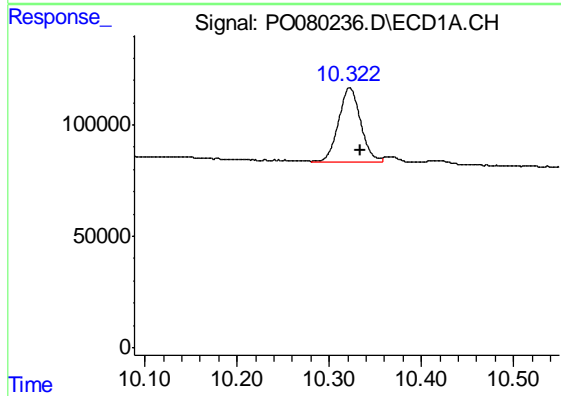
R.T.: 9.868 min
 Delta R.T.: -0.010 min
 Response: 41098
 Conc: 8.18 ng/ml

Instrument :
 ECD_O
 ClientSampleId :
 20210589-AMENDED-COM-3MSD



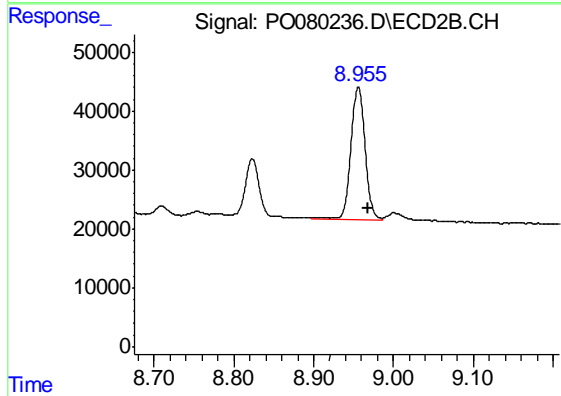
#43 AR-1268-3

R.T.: 8.662 min
 Delta R.T.: -0.012 min
 Response: 24757
 Conc: 10.68 ng/ml



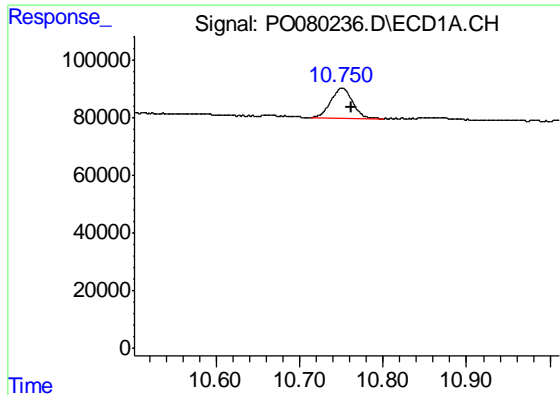
#44 AR-1268-4

R.T.: 10.322 min
 Delta R.T.: -0.011 min
 Response: 554959
 Conc: 241.53 ng/ml



#44 AR-1268-4

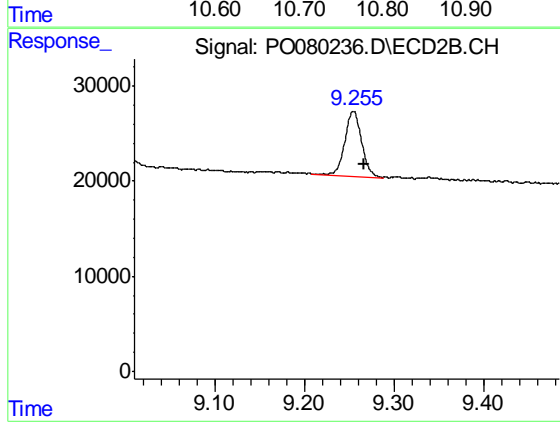
R.T.: 8.956 min
 Delta R.T.: -0.012 min
 Response: 277797
 Conc: 259.47 ng/ml



#45 AR-1268-5

R.T.: 10.751 min
Delta R.T.: -0.012 min
Response: 190961
Conc: 11.45 ng/ml

Instrument :
ECD_O
ClientSampleId :
20210589-AMENDED-COM-3MSD



#45 AR-1268-5

R.T.: 9.255 min
Delta R.T.: -0.012 min
Response: 88586
Conc: 12.76 ng/ml