

Data Path : Z:\pestpcbsrv\HPCHEM1\ECD_0\Data\P0080524\
 Data File : PO105197.D
 Signal(s) : Signal #1: ECD1A.ch Signal #2: ECD2B.ch
 Acq On : 05 Aug 2024 17:06
 Operator : YP/AJ
 Sample : AR1660CCC500
 Misc :
 ALS Vial : 3 Sample Multiplier: 1

Instrument :
 ECD_0
 ClientSampleId :
 AR1660CCC500

Integration File signal 1: autoint1.e
 Integration File signal 2: autoint2.e
 Quant Time: Aug 06 00:52:05 2024
 Quant Method : Z:\pestpcbsrv\HPCHEM1\ECD_0\methods\P0072924.M
 Quant Title : GC EXTRACTABLES
 QLast Update : Tue Jul 30 07:11:20 2024
 Response via : Initial Calibration
 Integrator: ChemStation

Volume Inj. : 2 µl
 Signal #1 Phase : ZB-MR1 Signal #2 Phase: ZB-MR2
 Signal #1 Info : 30Mx0.32mmx 0.50µ Signal #2 Info : 30M x 0.32mm x 0.25µm

Compound	RT#1	RT#2	Resp#1	Resp#2	ng/ml	ng/ml
System Monitoring Compounds						
1) SA Tetrachlo...	4.430	3.540	406.0E6	139.8E6	58.977	54.854
2) SA Decachlor...	10.222	8.432	244.7E6	69517350	47.665	43.762
Target Compounds						
3) L1 AR-1016-1	5.601	4.595	127.0E6	49597489	533.888	533.454
4) L1 AR-1016-2	5.624	4.613	178.6E6	69034680	531.192	536.405
5) L1 AR-1016-3	5.686	4.784	106.7E6	36827622	515.665	543.866
6) L1 AR-1016-4	5.786	4.826	87422272	29300623	481.523	544.830
7) L1 AR-1016-5	6.082	5.035	84047333	38206842	516.411	538.387
8) L2 AR-1221-1	4.633	3.746	15962100	5028448	173.946	154.035
9) L2 AR-1221-2	4.724	3.831	21866623	7583366	305.079	301.043
10) L2 AR-1221-3	4.800	3.904	73108388	26735809	363.140	355.218
11) L3 AR-1232-1	4.800	3.904	73108388	26735809	445.244	433.282
12) L3 AR-1232-2	5.332	4.613	98773798	69034680	1194.327	1134.113
13) L3 AR-1232-3	5.624	4.784	178.6E6	36827622	1136.472	1157.131
14) L3 AR-1232-4	5.786	4.867	87422272	36613096	1014.054	1274.899 #
15) L3 AR-1232-5	5.876	5.035	74724993	38206842	1304.772	1227.156
16) L4 AR-1242-1	5.601	4.595	127.0E6	49597489	650.793	647.835
17) L4 AR-1242-2	5.624	4.613	178.6E6	69034680	652.432	657.980
18) L4 AR-1242-3	5.686	4.784	106.7E6	36827622	632.084	663.548
19) L4 AR-1242-4	5.786	4.867	87422272	36613096	580.399	654.263
20) L4 AR-1242-5	6.528	5.379	18788308	32285100	112.602	455.248 #
21) L5 AR-1248-1	5.601	4.595	127.0E6	49597489	819.507	809.321
22) L5 AR-1248-2	5.876	4.826	74724993	29300623	338.749	352.503
23) L5 AR-1248-3	6.082	4.867	84047333	36613096	342.321	420.131
24) L5 AR-1248-4	6.488	5.035	19377464	38206842	64.057	370.222 #
25) L5 AR-1248-5	6.528	5.418	18788308	6395363	66.106	62.202
26) L6 AR-1254-1	6.463	5.379	71256449	32285100	246.196	215.163
27) L6 AR-1254-2	6.682	5.524	69707646	27885872	167.869	208.327
28) L6 AR-1254-3	7.052	5.936	31861601	47631350	76.318	224.178 #
29) L6 AR-1254-4	7.340	6.146	19682420	4948401	62.976	37.258 #
30) L6 AR-1254-5	7.761	6.558	195.0E6	83341801	533.051	448.985
31) L7 AR-1260-1	7.218	6.049	139.6E6	66148255	439.652	485.680
32) L7 AR-1260-2	7.476	6.235	163.3E6	76989577	449.042	457.560
33) L7 AR-1260-3	7.838	6.386	106.5E6	71428674	415.209	423.516
34) L7 AR-1260-4	8.066	6.852	134.3E6	50121820	471.180	457.689
35) L7 AR-1260-5	8.389	7.092	243.3E6	111.8E6	435.213	437.380
36) L8 AR-1262-1	7.761	6.558	195.0E6	83341801	670.009	824.314
37) L8 AR-1262-2	8.389	6.852	243.3E6	50121820	331.194	303.251
38) L8 AR-1262-3	8.718	7.371	159.4E6	23062761	335.189	183.477 #
39) L8 AR-1262-4	8.776	7.433	91811383	77384556	265.296	337.223 #
40) L8 AR-1262-5	9.460	7.923	62981058	22899031	254.609	233.012
41) L9 AR-1268-1	8.718	7.371	159.4E6	23062761	202.161	65.553 #

Data Path : Z:\pestpcbsrv\HPCHEM1\ECD_0\Data\P0080524\
 Data File : P0105197.D
 Signal(s) : Signal #1: ECD1A.ch Signal #2: ECD2B.ch
 Acq On : 05 Aug 2024 17:06
 Operator : YP/AJ
 Sample : AR1660CCC500
 Misc :
 ALS Vial : 3 Sample Multiplier: 1

Instrument :
 ECD_0
 ClientSampleId :
 AR1660CCC500

Integration File signal 1: autoint1.e
 Integration File signal 2: autoint2.e
 Quant Time: Aug 06 00:52:05 2024
 Quant Method : Z:\pestpcbsrv\HPCHEM1\ECD_0\methods\P0072924.M
 Quant Title : GC EXTRACTABLES
 QLast Update : Tue Jul 30 07:11:20 2024
 Response via : Initial Calibration
 Integrator: ChemStation

Volume Inj. : 2 µl
 Signal #1 Phase : ZB-MR1 Signal #2 Phase: ZB-MR2
 Signal #1 Info : 30Mx0.32mmx 0.50µ Signal #2 Info : 30M x 0.32mm x 0.25µm

	Compound	RT#1	RT#2	Resp#1	Resp#2	ng/ml	ng/ml
42)	L9 AR-1268-2	8.776	7.433	91811383	77384556	132.429	249.525 #
43)	L9 AR-1268-3	9.028	7.637	10183697	1747605	17.061	6.958 #
44)	L9 AR-1268-4	9.460	7.923	62981058	22899031	249.622	219.958
45)	L9 AR-1268-5	9.880	8.197	20209952	7020856	10.309	10.480

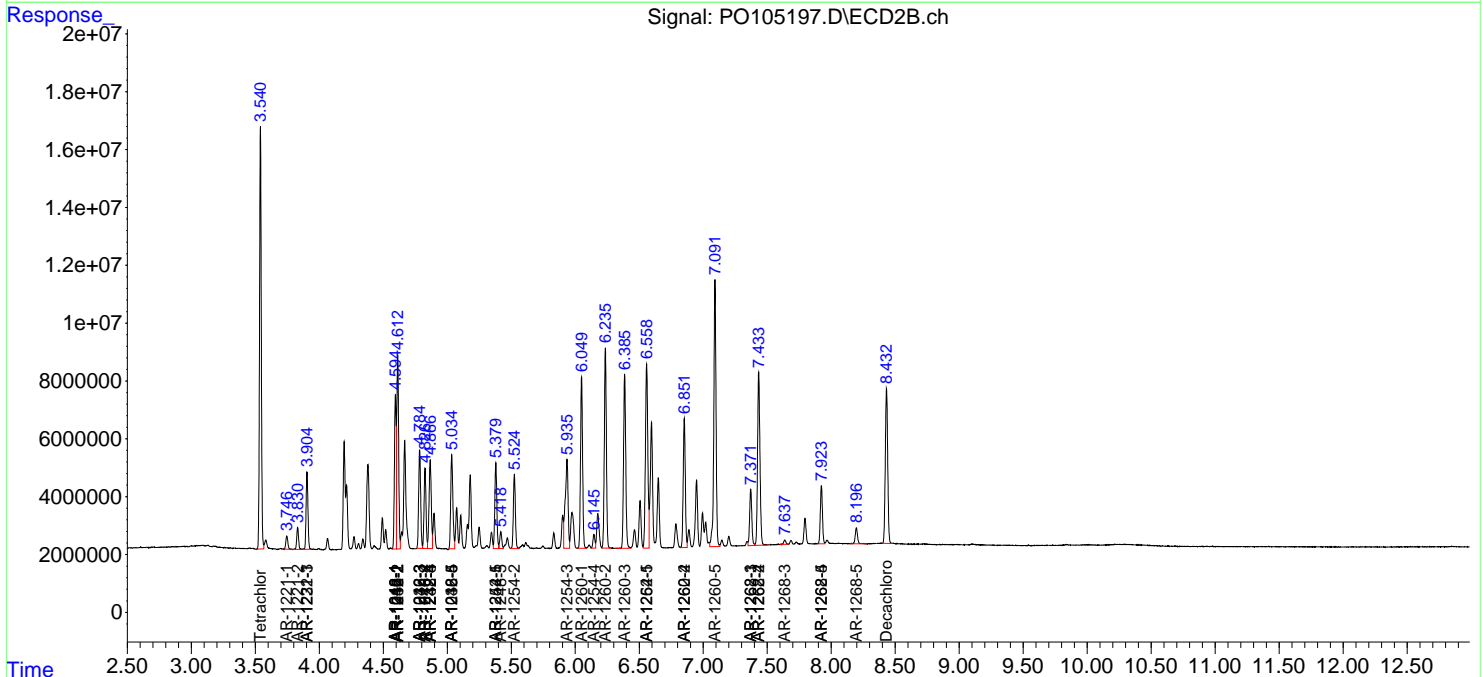
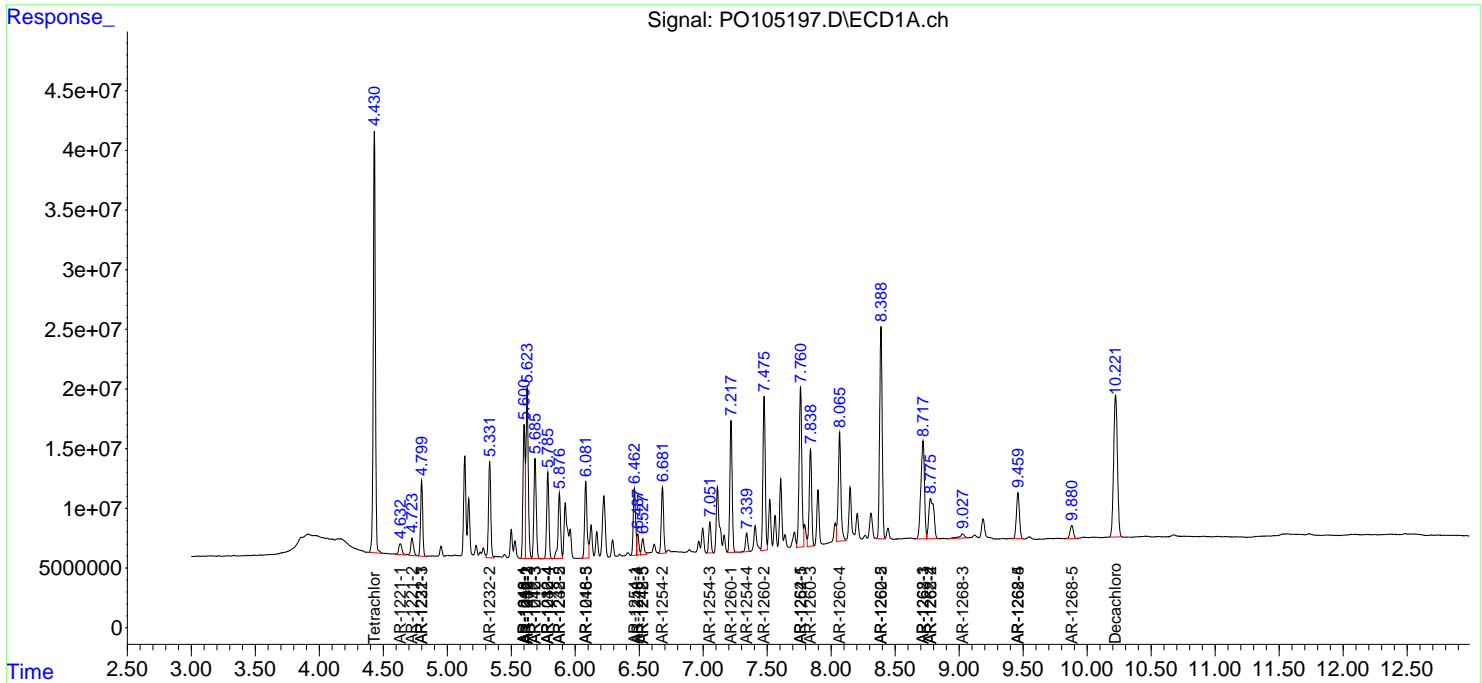
(f)=RT Delta > 1/2 Window (#)=Amounts differ by > 25% (m)=manual int.

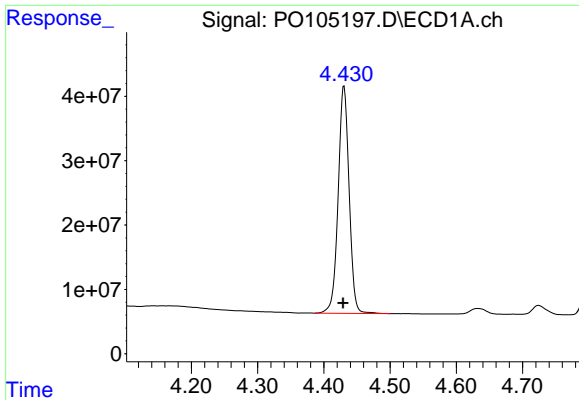
Data Path : Z:\pestpcbsrv\HPCHEM1\ECD_O\Data\PO080524\
 Data File : PO105197.D
 Signal(s) : Signal #1: ECD1A.ch Signal #2: ECD2B.ch
 Acq On : 05 Aug 2024 17:06
 Operator : YP/AJ
 Sample : AR1660CCC500
 Misc :
 ALS Vial : 3 Sample Multiplier: 1

Instrument :
 ECD_O
ClientSampleId :
 AR1660CCC500

Integration File signal 1: autoint1.e
 Integration File signal 2: autoint2.e
 Quant Time: Aug 06 00:52:05 2024
 Quant Method : Z:\pestpcbsrv\HPCHEM1\ECD_O\methods\PO072924.M
 Quant Title : GC EXTRACTABLES
 QLast Update : Tue Jul 30 07:11:20 2024
 Response via : Initial Calibration
 Integrator: ChemStation

Volume Inj. : 2 µl
 Signal #1 Phase : ZB-MR1 Signal #2 Phase: ZB-MR2
 Signal #1 Info : 30Mx0.32mmx 0.50µ Signal #2 Info : 30M x 0.32mm x 0.25µm

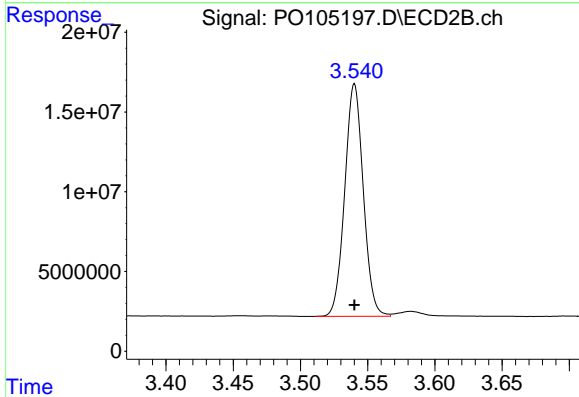




#1 Tetrachloro-m-xylene

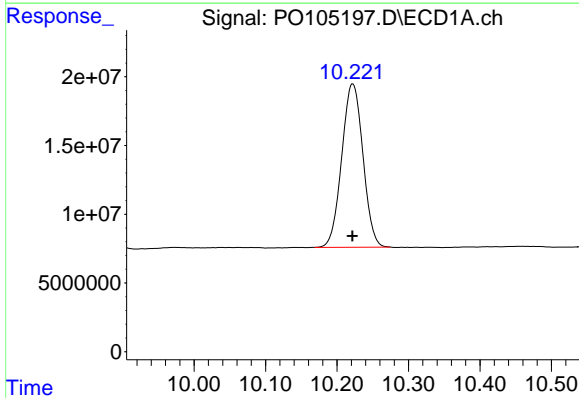
R.T.: 4.430 min
 Delta R.T.: 0.001 min
 Response: 406015316
 Conc: 58.98 ng/ml

Instrument :
 ECD_O
 ClientSampleId :
 AR1660CCC500



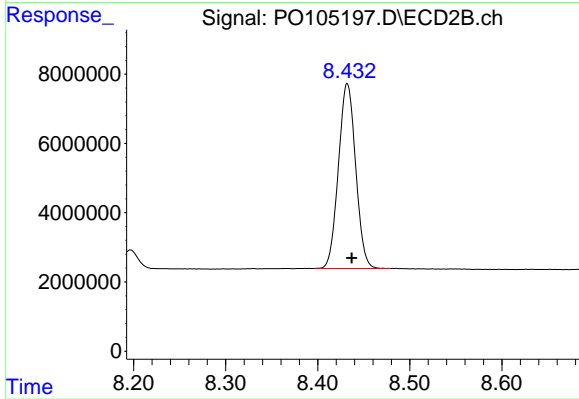
#1 Tetrachloro-m-xylene

R.T.: 3.540 min
 Delta R.T.: 0.000 min
 Response: 139771936
 Conc: 54.85 ng/ml



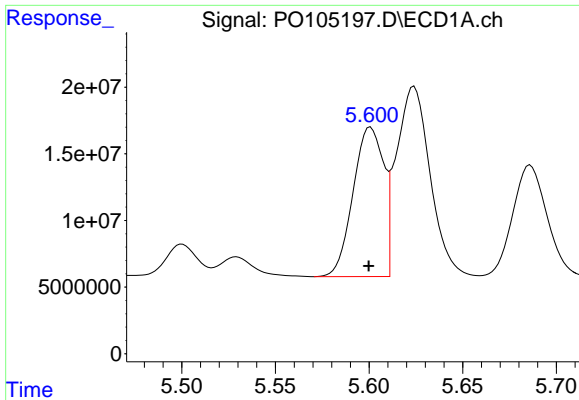
#2 Decachlorobiphenyl

R.T.: 10.222 min
 Delta R.T.: 0.000 min
 Response: 244712193
 Conc: 47.67 ng/ml



#2 Decachlorobiphenyl

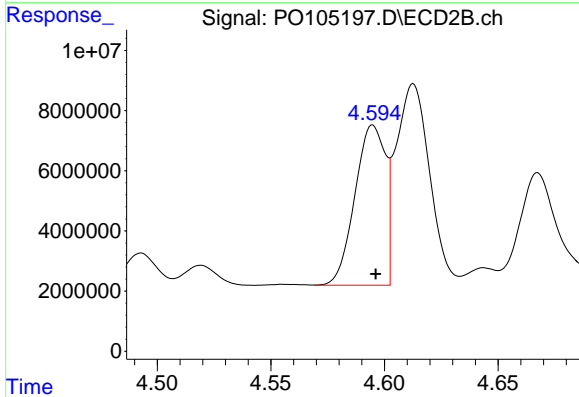
R.T.: 8.432 min
 Delta R.T.: -0.005 min
 Response: 69517350
 Conc: 43.76 ng/ml



#3 AR-1016-1

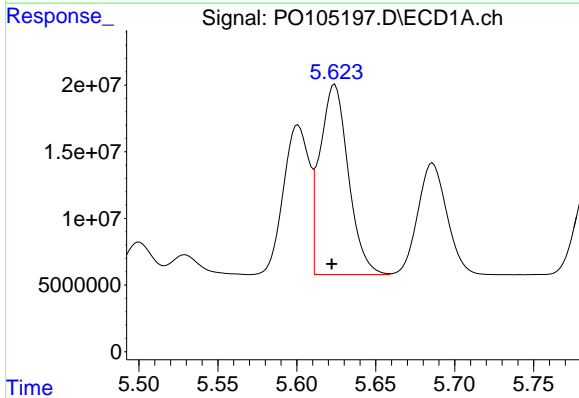
R.T.: 5.601 min
 Delta R.T.: 0.001 min
 Response: 127047022
 Conc: 533.89 ng/ml

Instrument :
 ECD_O
 ClientSampleId :
 AR1660CCC500



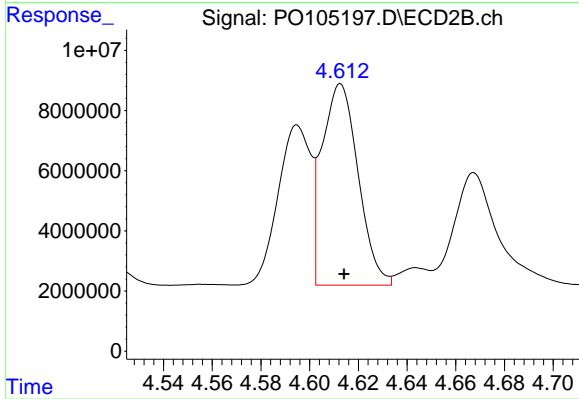
#3 AR-1016-1

R.T.: 4.595 min
 Delta R.T.: -0.001 min
 Response: 49597489
 Conc: 533.45 ng/ml



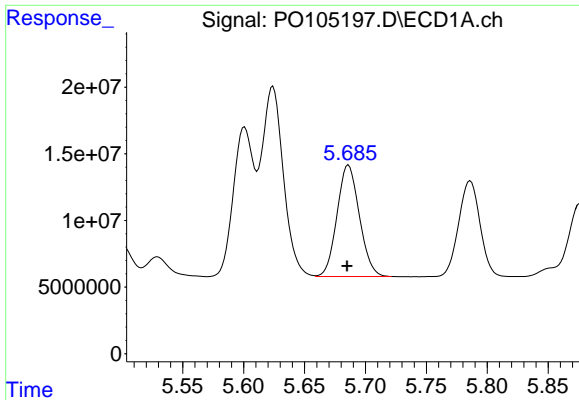
#4 AR-1016-2

R.T.: 5.624 min
 Delta R.T.: 0.002 min
 Response: 178580225
 Conc: 531.19 ng/ml



#4 AR-1016-2

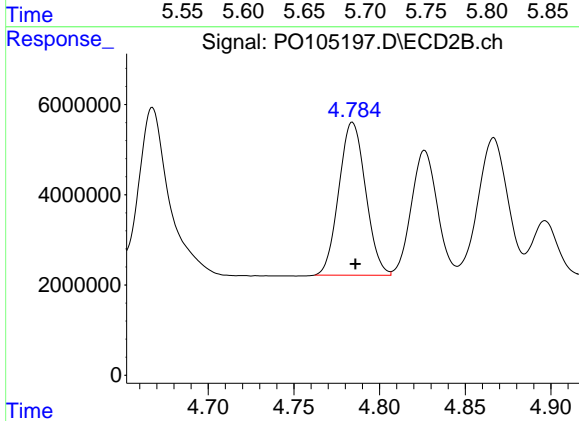
R.T.: 4.613 min
 Delta R.T.: -0.001 min
 Response: 69034680
 Conc: 536.40 ng/ml



#5 AR-1016-3

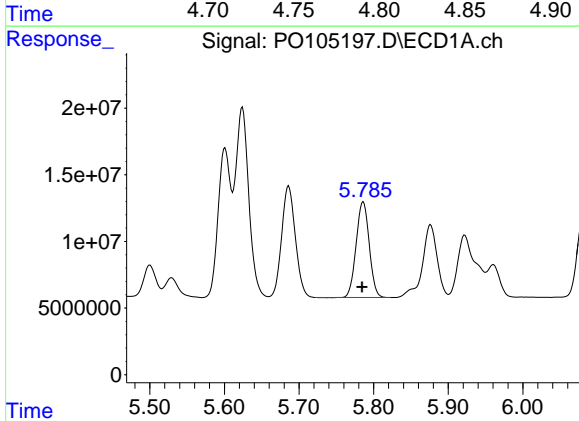
R.T.: 5.686 min
 Delta R.T.: 0.001 min
 Response: 106672804
 Conc: 515.66 ng/ml

Instrument :
 ECD_O
 ClientSampleId :
 AR1660CCC500



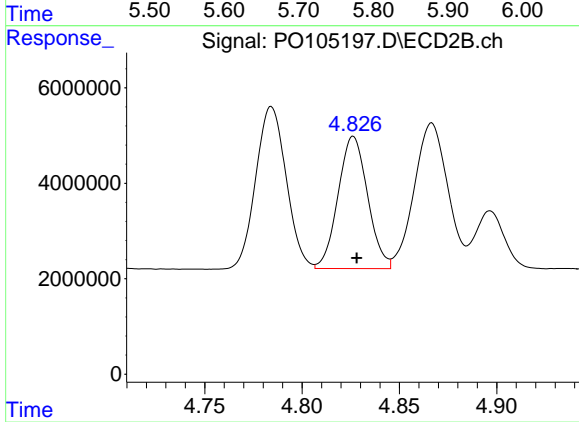
#5 AR-1016-3

R.T.: 4.784 min
 Delta R.T.: -0.002 min
 Response: 36827622
 Conc: 543.87 ng/ml



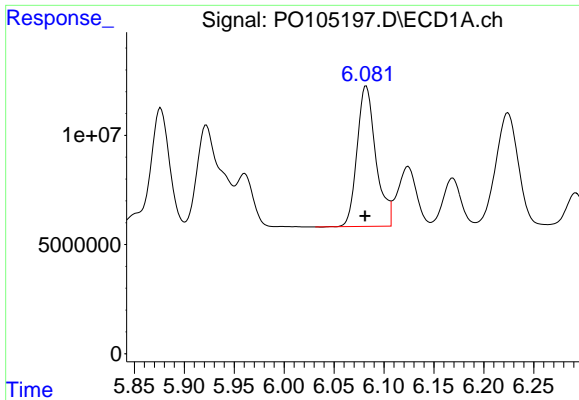
#6 AR-1016-4

R.T.: 5.786 min
 Delta R.T.: 0.002 min
 Response: 87422272
 Conc: 481.52 ng/ml



#6 AR-1016-4

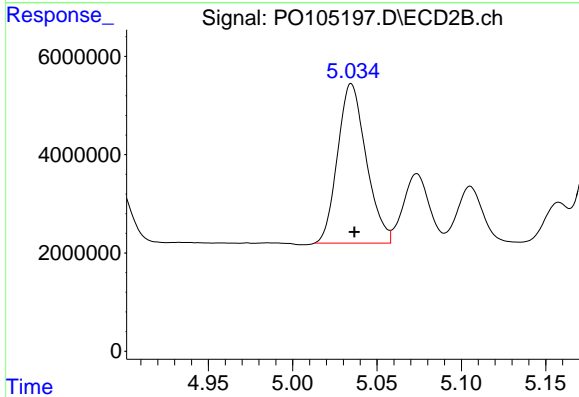
R.T.: 4.826 min
 Delta R.T.: -0.002 min
 Response: 29300623
 Conc: 544.83 ng/ml



#7 AR-1016-5

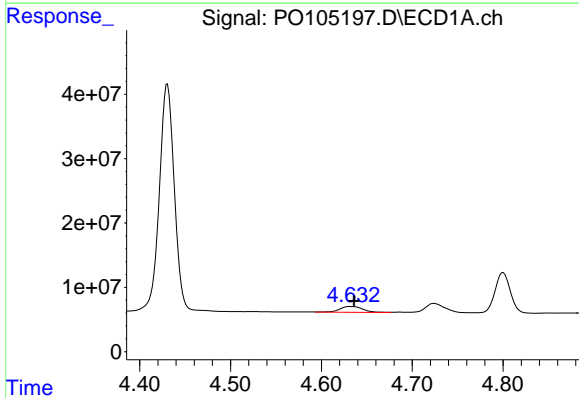
R.T.: 6.082 min
 Delta R.T.: 0.001 min
 Response: 84047333
 Conc: 516.41 ng/ml

Instrument :
 ECD_O
 ClientSampleId :
 AR1660CCC500



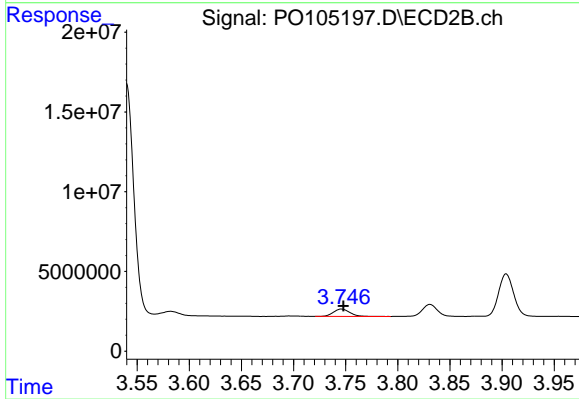
#7 AR-1016-5

R.T.: 5.035 min
 Delta R.T.: -0.002 min
 Response: 38206842
 Conc: 538.39 ng/ml



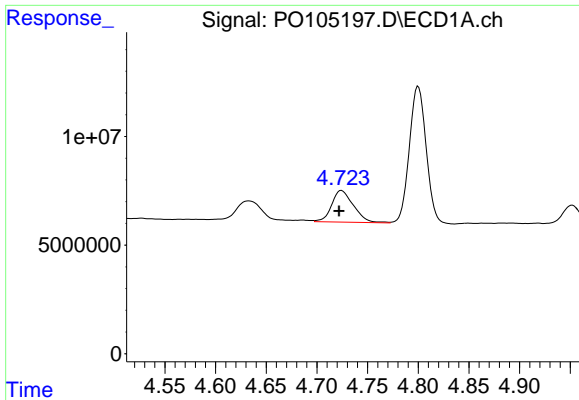
#8 AR-1221-1

R.T.: 4.633 min
 Delta R.T.: -0.003 min
 Response: 15962100
 Conc: 173.95 ng/ml



#8 AR-1221-1

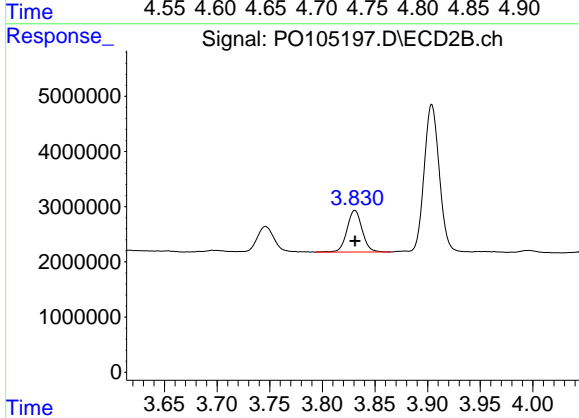
R.T.: 3.746 min
 Delta R.T.: -0.002 min
 Response: 5028448
 Conc: 154.03 ng/ml



#9 AR-1221-2

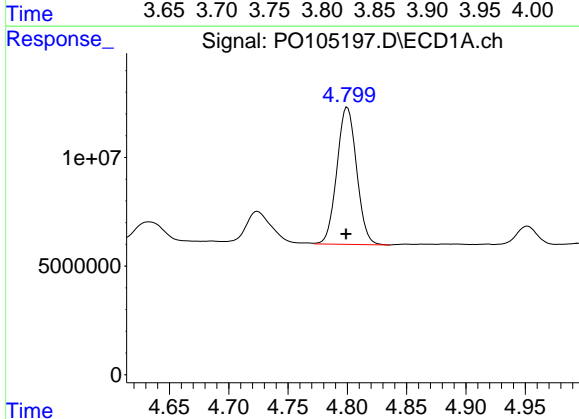
R.T.: 4.724 min
 Delta R.T.: 0.003 min
 Response: 21866623
 Conc: 305.08 ng/ml

Instrument :
 ECD_O
 ClientSampleId :
 AR1660CCC500



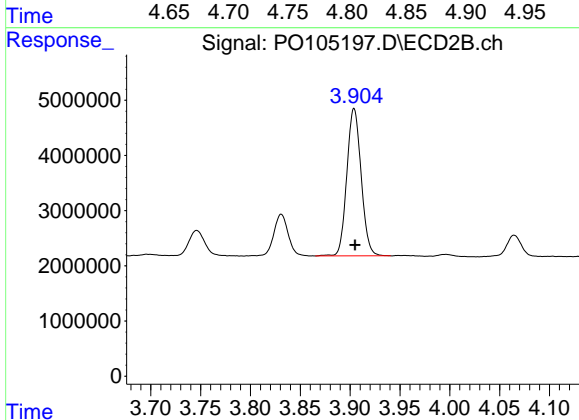
#9 AR-1221-2

R.T.: 3.831 min
 Delta R.T.: 0.000 min
 Response: 7583366
 Conc: 301.04 ng/ml



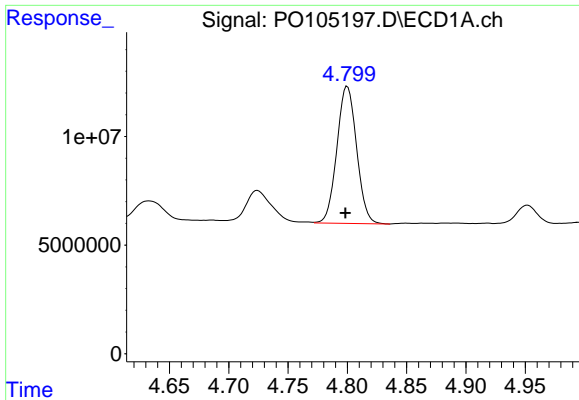
#10 AR-1221-3

R.T.: 4.800 min
 Delta R.T.: 0.001 min
 Response: 73108388
 Conc: 363.14 ng/ml



#10 AR-1221-3

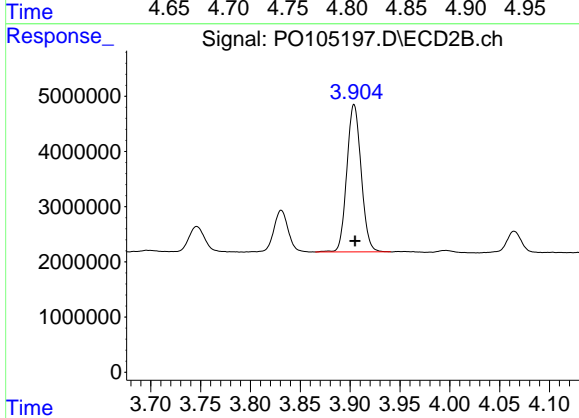
R.T.: 3.904 min
 Delta R.T.: -0.001 min
 Response: 26735809
 Conc: 355.22 ng/ml



#11 AR-1232-1

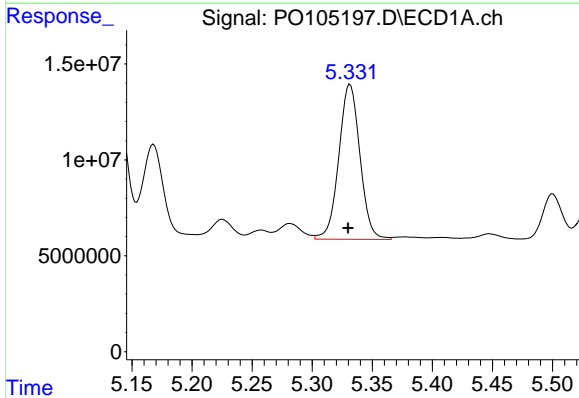
R.T.: 4.800 min
 Delta R.T.: 0.002 min
 Response: 73108388
 Conc: 445.24 ng/ml

Instrument :
 ECD_O
 ClientSampleId :
 AR1660CCC500



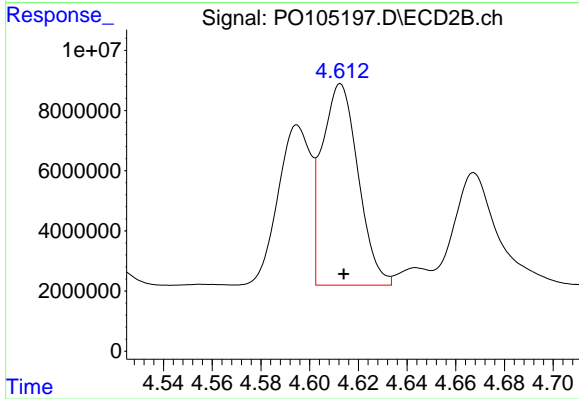
#11 AR-1232-1

R.T.: 3.904 min
 Delta R.T.: 0.000 min
 Response: 26735809
 Conc: 433.28 ng/ml



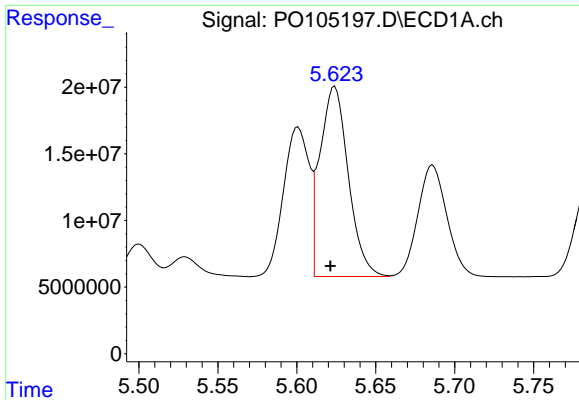
#12 AR-1232-2

R.T.: 5.332 min
 Delta R.T.: 0.002 min
 Response: 98773798
 Conc: 1194.33 ng/ml



#12 AR-1232-2

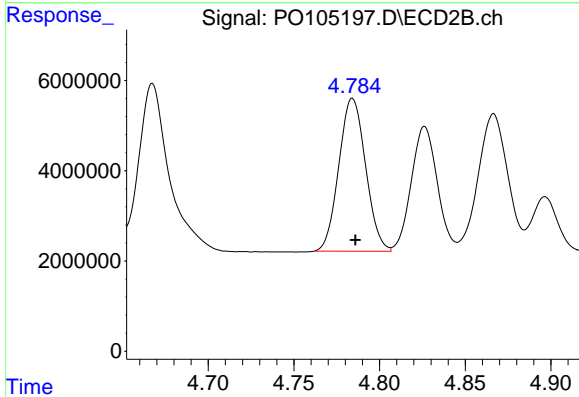
R.T.: 4.613 min
 Delta R.T.: -0.001 min
 Response: 69034680
 Conc: 1134.11 ng/ml



#13 AR-1232-3

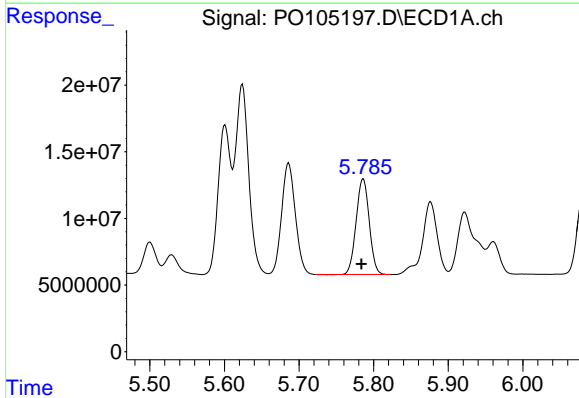
R.T.: 5.624 min
 Delta R.T.: 0.003 min
 Response: 178580225
 Conc: 1136.47 ng/ml

Instrument :
 ECD_O
 ClientSampleId :
 AR1660CCC500



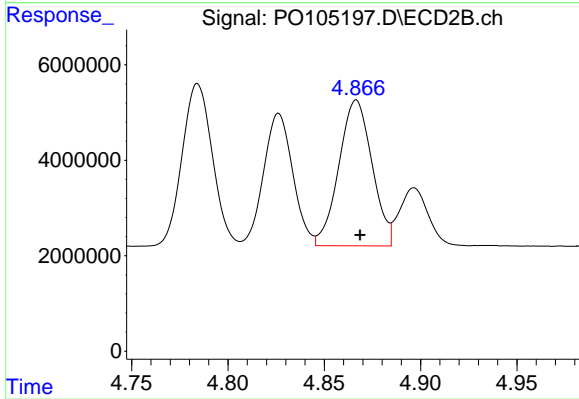
#13 AR-1232-3

R.T.: 4.784 min
 Delta R.T.: -0.002 min
 Response: 36827622
 Conc: 1157.13 ng/ml



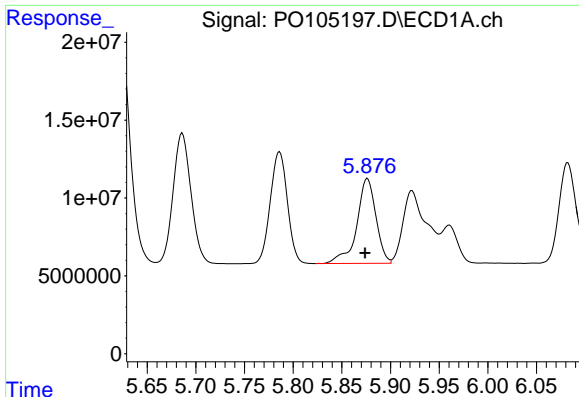
#14 AR-1232-4

R.T.: 5.786 min
 Delta R.T.: 0.003 min
 Response: 87422272
 Conc: 1014.05 ng/ml



#14 AR-1232-4

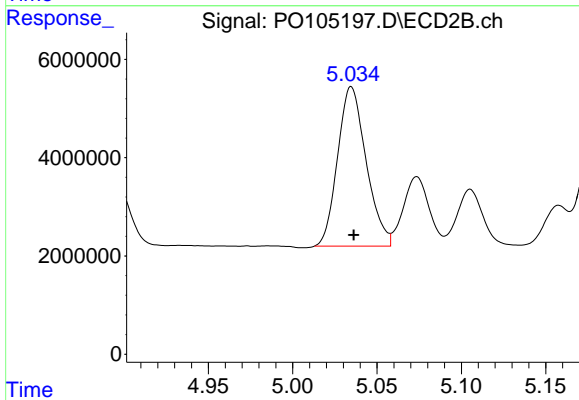
R.T.: 4.867 min
 Delta R.T.: -0.002 min
 Response: 36613096
 Conc: 1274.90 ng/ml



#15 AR-1232-5

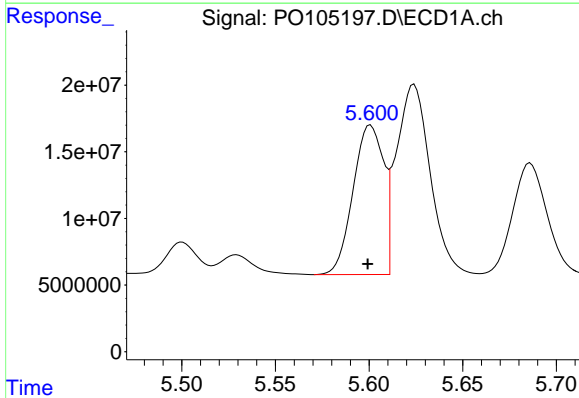
R.T.: 5.876 min
 Delta R.T.: 0.003 min
 Response: 74724993
 Conc: 1304.77 ng/ml

Instrument :
 ECD_O
 ClientSampleId :
 AR1660CCC500



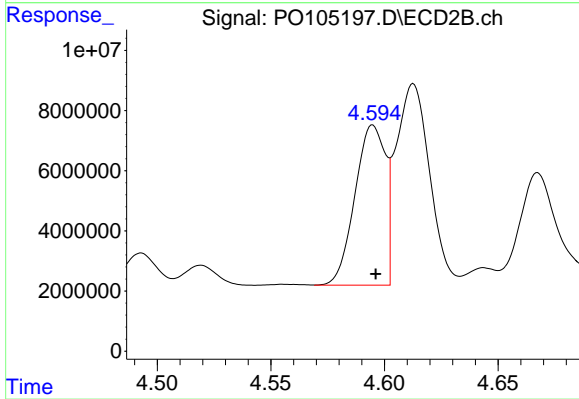
#15 AR-1232-5

R.T.: 5.035 min
 Delta R.T.: -0.001 min
 Response: 38206842
 Conc: 1227.16 ng/ml



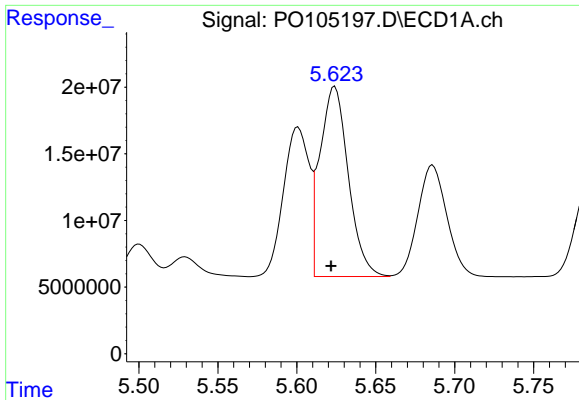
#16 AR-1242-1

R.T.: 5.601 min
 Delta R.T.: 0.002 min
 Response: 127047022
 Conc: 650.79 ng/ml



#16 AR-1242-1

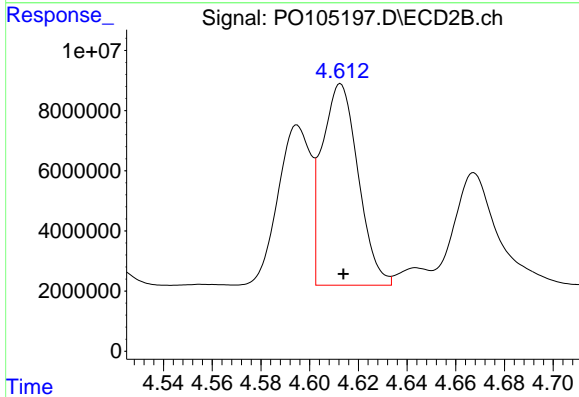
R.T.: 4.595 min
 Delta R.T.: -0.001 min
 Response: 49597489
 Conc: 647.84 ng/ml



#17 AR-1242-2

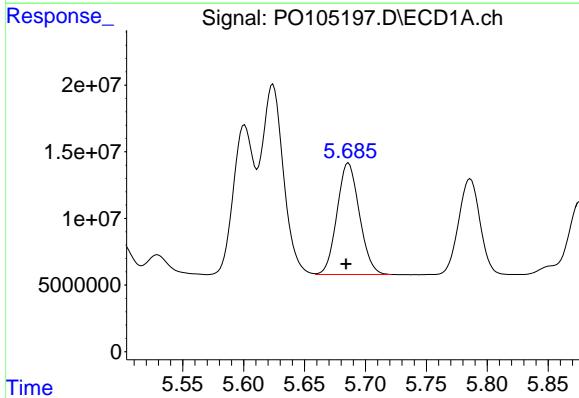
R.T.: 5.624 min
 Delta R.T.: 0.002 min
 Response: 178580225
 Conc: 652.43 ng/ml

Instrument :
 ECD_O
 ClientSampleId :
 AR1660CCC500



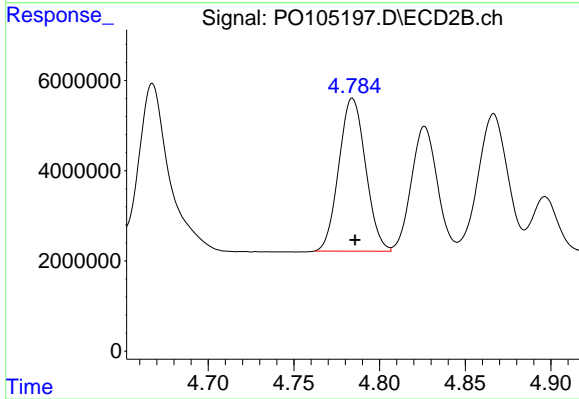
#17 AR-1242-2

R.T.: 4.613 min
 Delta R.T.: -0.001 min
 Response: 69034680
 Conc: 657.98 ng/ml



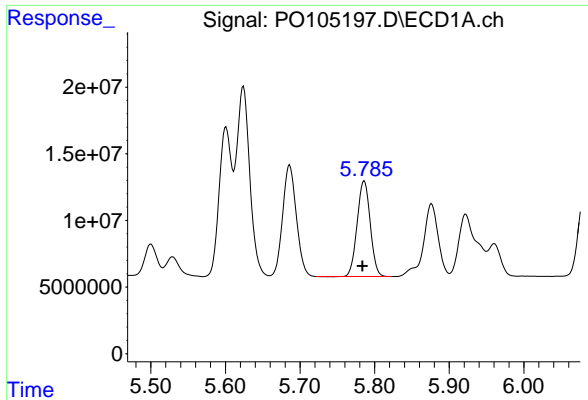
#18 AR-1242-3

R.T.: 5.686 min
 Delta R.T.: 0.002 min
 Response: 106672804
 Conc: 632.08 ng/ml



#18 AR-1242-3

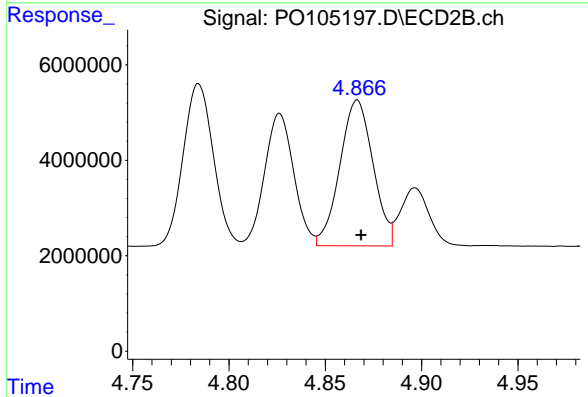
R.T.: 4.784 min
 Delta R.T.: -0.001 min
 Response: 36827622
 Conc: 663.55 ng/ml



#19 AR-1242-4

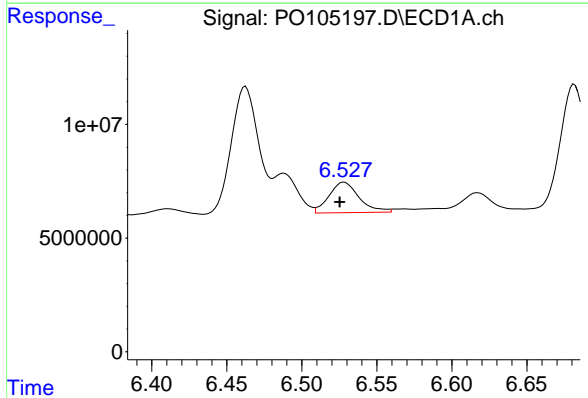
R.T.: 5.786 min
 Delta R.T.: 0.002 min
 Response: 87422272
 Conc: 580.40 ng/ml

Instrument :
 ECD_O
 ClientSampleId :
 AR1660CCC500



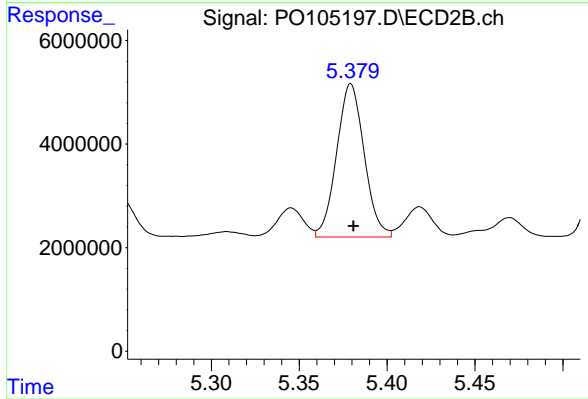
#19 AR-1242-4

R.T.: 4.867 min
 Delta R.T.: -0.002 min
 Response: 36613096
 Conc: 654.26 ng/ml



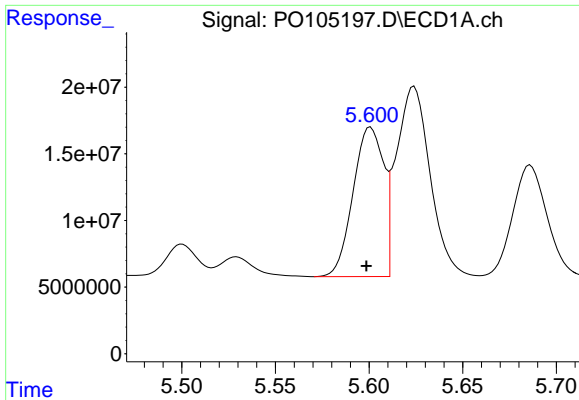
#20 AR-1242-5

R.T.: 6.528 min
 Delta R.T.: 0.003 min
 Response: 18788308
 Conc: 112.60 ng/ml



#20 AR-1242-5

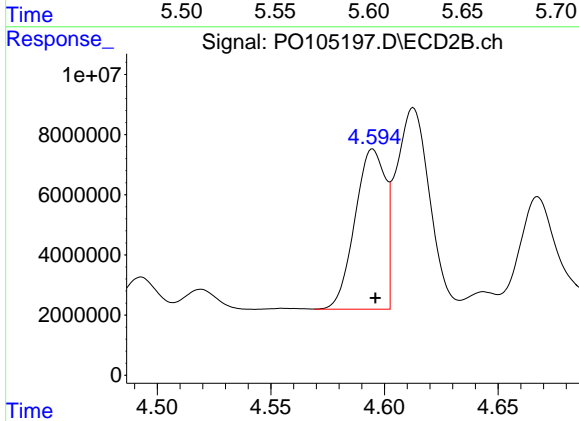
R.T.: 5.379 min
 Delta R.T.: -0.001 min
 Response: 32285100
 Conc: 455.25 ng/ml



#21 AR-1248-1

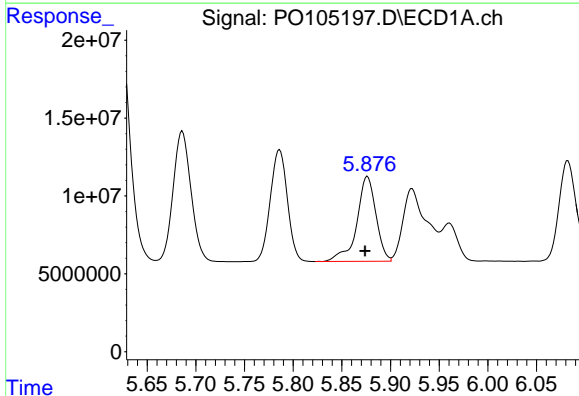
R.T.: 5.601 min
 Delta R.T.: 0.002 min
 Response: 127047022
 Conc: 819.51 ng/ml

Instrument :
 ECD_O
 ClientSampleId :
 AR1660CCC500



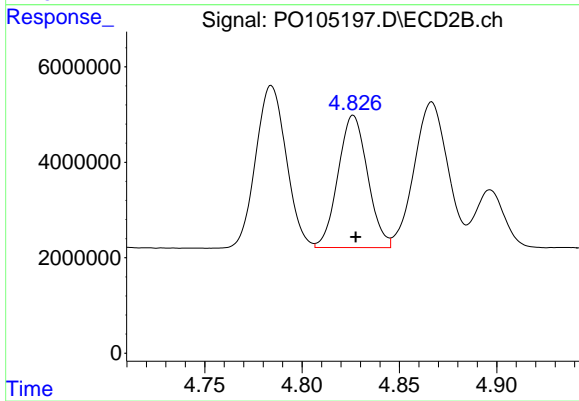
#21 AR-1248-1

R.T.: 4.595 min
 Delta R.T.: -0.001 min
 Response: 49597489
 Conc: 809.32 ng/ml



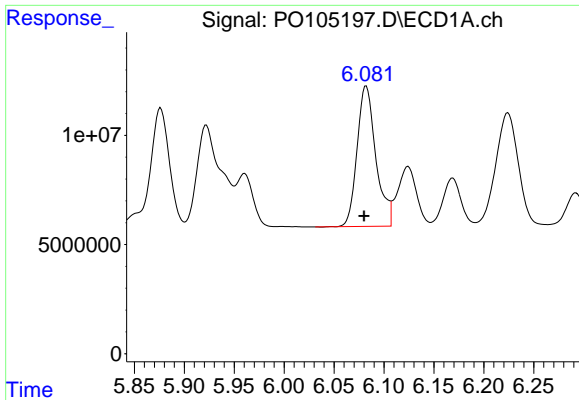
#22 AR-1248-2

R.T.: 5.876 min
 Delta R.T.: 0.003 min
 Response: 74724993
 Conc: 338.75 ng/ml



#22 AR-1248-2

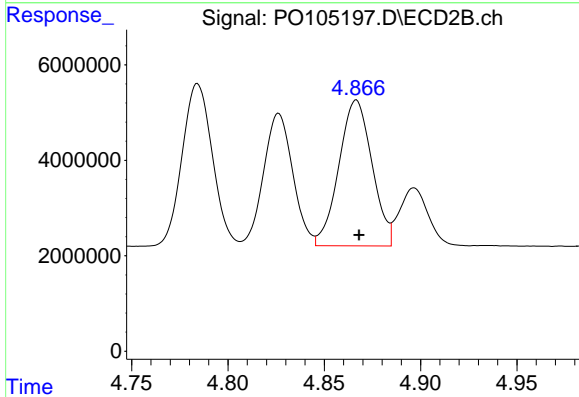
R.T.: 4.826 min
 Delta R.T.: -0.001 min
 Response: 29300623
 Conc: 352.50 ng/ml



#23 AR-1248-3

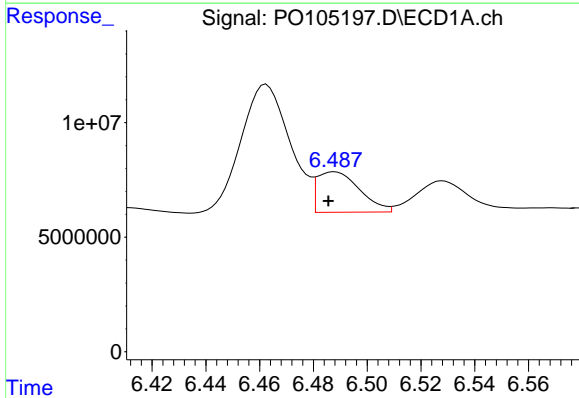
R.T.: 6.082 min
 Delta R.T.: 0.002 min
 Response: 84047333
 Conc: 342.32 ng/ml

Instrument :
 ECD_O
 ClientSampleId :
 AR1660CCC500



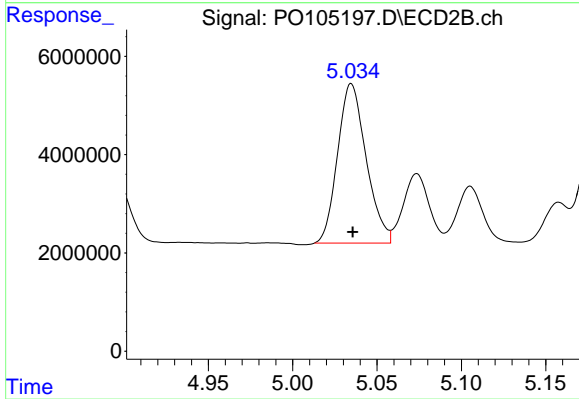
#23 AR-1248-3

R.T.: 4.867 min
 Delta R.T.: -0.002 min
 Response: 36613096
 Conc: 420.13 ng/ml



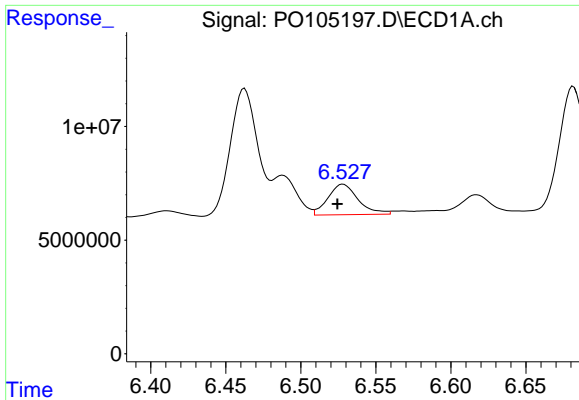
#24 AR-1248-4

R.T.: 6.488 min
 Delta R.T.: 0.002 min
 Response: 19377464
 Conc: 64.06 ng/ml



#24 AR-1248-4

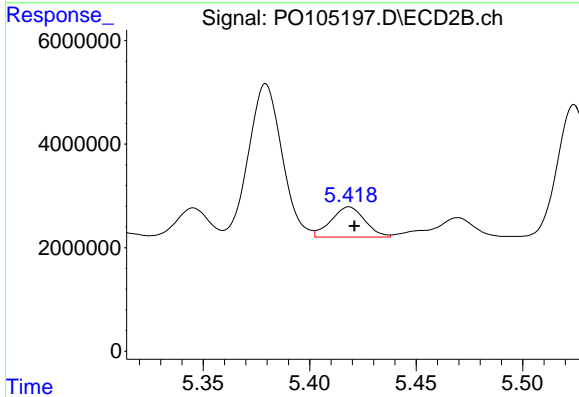
R.T.: 5.035 min
 Delta R.T.: 0.000 min
 Response: 38206842
 Conc: 370.22 ng/ml



#25 AR-1248-5

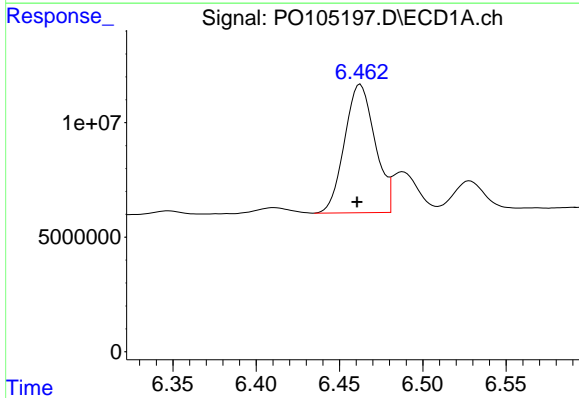
R.T.: 6.528 min
 Delta R.T.: 0.004 min
 Response: 18788308
 Conc: 66.11 ng/ml

Instrument :
 ECD_O
 ClientSampleId :
 AR1660CCC500



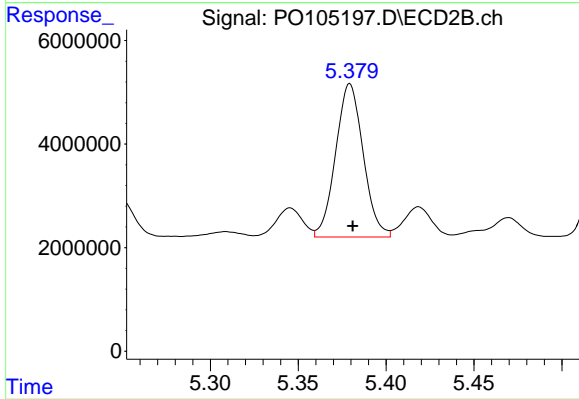
#25 AR-1248-5

R.T.: 5.418 min
 Delta R.T.: -0.002 min
 Response: 6395363
 Conc: 62.20 ng/ml



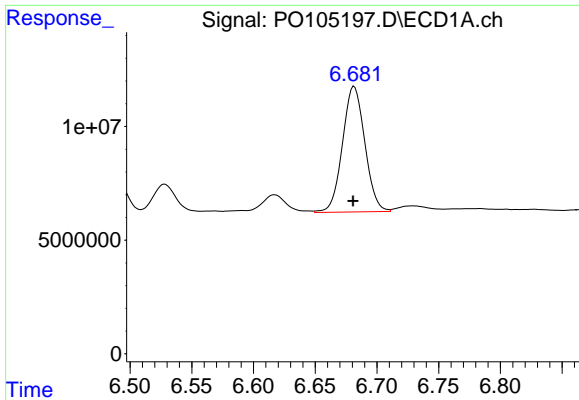
#26 AR-1254-1

R.T.: 6.463 min
 Delta R.T.: 0.002 min
 Response: 71256449
 Conc: 246.20 ng/ml



#26 AR-1254-1

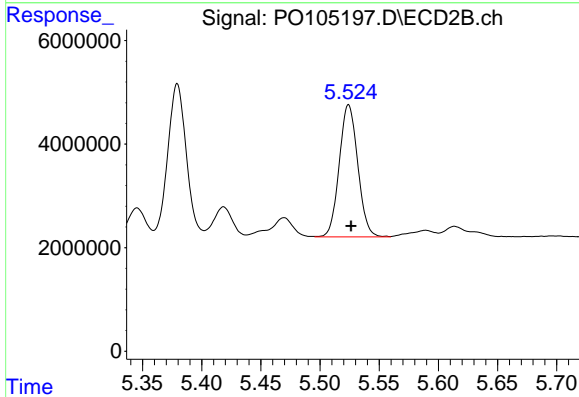
R.T.: 5.379 min
 Delta R.T.: -0.002 min
 Response: 32285100
 Conc: 215.16 ng/ml



#27 AR-1254-2

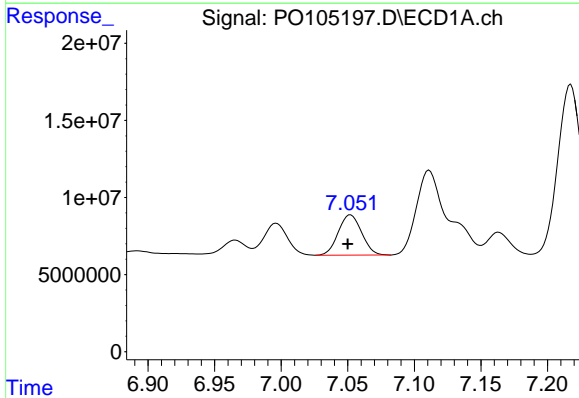
R.T.: 6.682 min
 Delta R.T.: 0.000 min
 Response: 69707646
 Conc: 167.87 ng/ml

Instrument :
 ECD_O
 ClientSampleId :
 AR1660CCC500



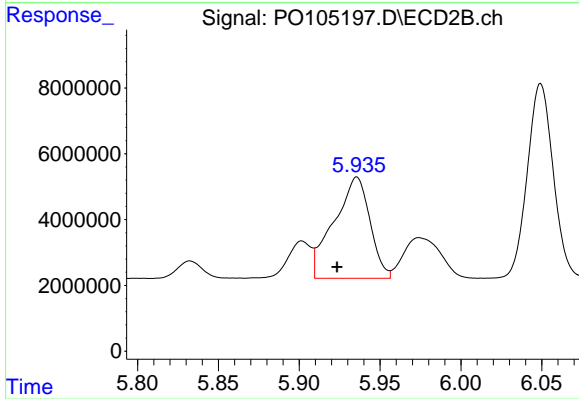
#27 AR-1254-2

R.T.: 5.524 min
 Delta R.T.: -0.002 min
 Response: 27885872
 Conc: 208.33 ng/ml



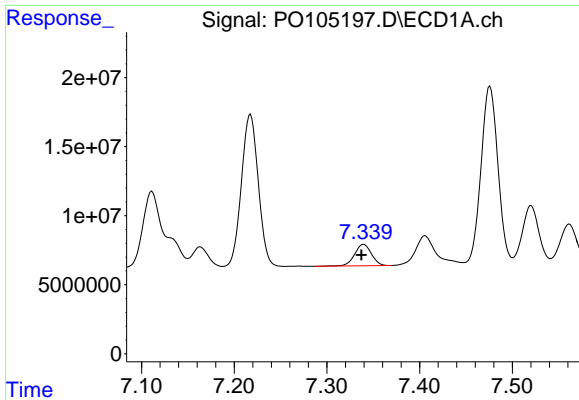
#28 AR-1254-3

R.T.: 7.052 min
 Delta R.T.: 0.002 min
 Response: 31861601
 Conc: 76.32 ng/ml



#28 AR-1254-3

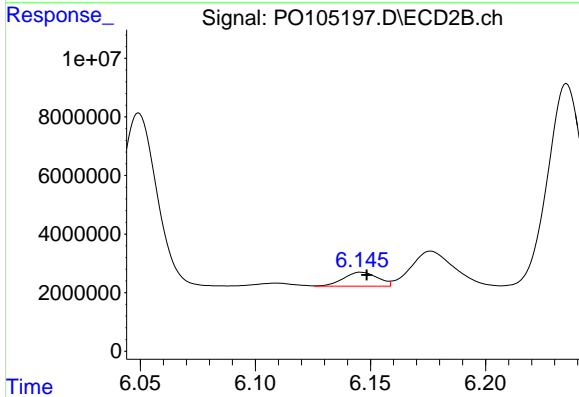
R.T.: 5.936 min
 Delta R.T.: 0.012 min
 Response: 47631350
 Conc: 224.18 ng/ml



#29 AR-1254-4

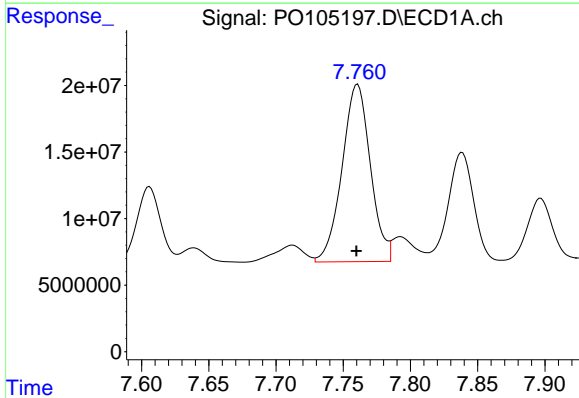
R.T.: 7.340 min
 Delta R.T.: 0.002 min
 Response: 19682420
 Conc: 62.98 ng/ml

Instrument :
 ECD_O
 ClientSampleId :
 AR1660CCC500



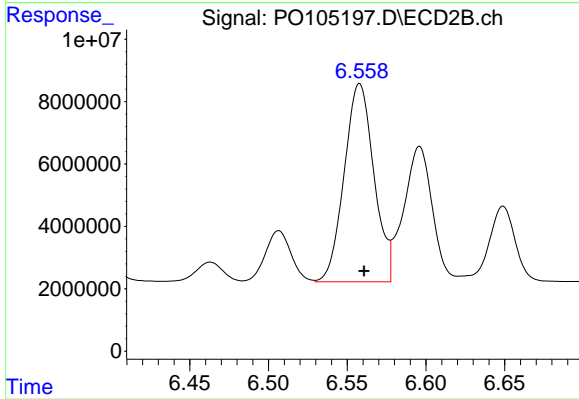
#29 AR-1254-4

R.T.: 6.146 min
 Delta R.T.: -0.002 min
 Response: 4948401
 Conc: 37.26 ng/ml



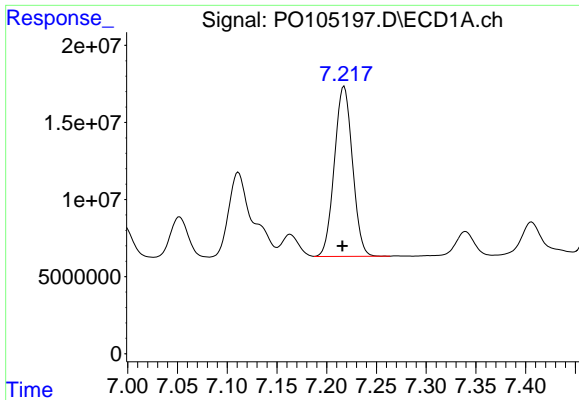
#30 AR-1254-5

R.T.: 7.761 min
 Delta R.T.: 0.000 min
 Response: 195031686
 Conc: 533.05 ng/ml



#30 AR-1254-5

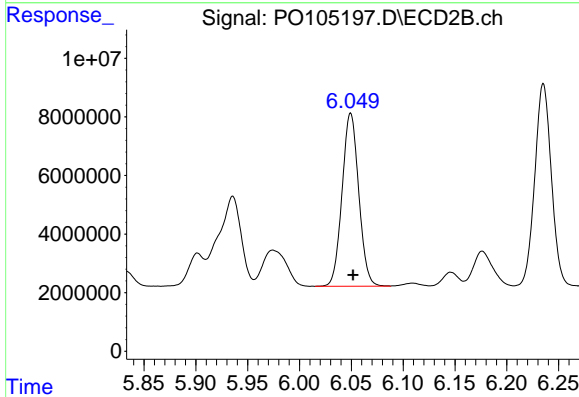
R.T.: 6.558 min
 Delta R.T.: -0.003 min
 Response: 83341801
 Conc: 448.99 ng/ml



#31 AR-1260-1

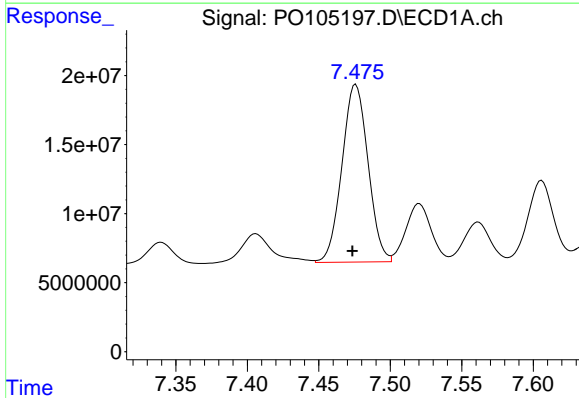
R.T.: 7.218 min
 Delta R.T.: 0.002 min
 Response: 139598172
 Conc: 439.65 ng/ml

Instrument :
 ECD_O
 ClientSampleId :
 AR1660CCC500



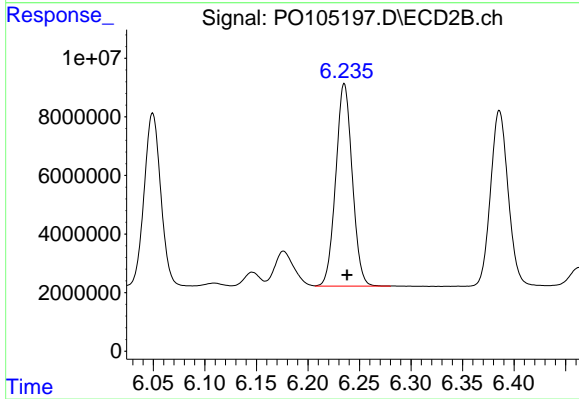
#31 AR-1260-1

R.T.: 6.049 min
 Delta R.T.: -0.003 min
 Response: 66148255
 Conc: 485.68 ng/ml



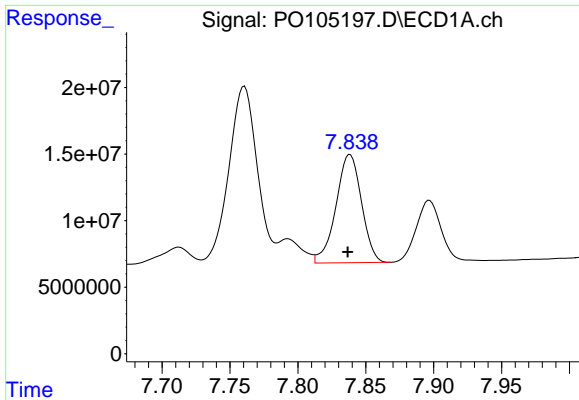
#32 AR-1260-2

R.T.: 7.476 min
 Delta R.T.: 0.002 min
 Response: 163301928
 Conc: 449.04 ng/ml



#32 AR-1260-2

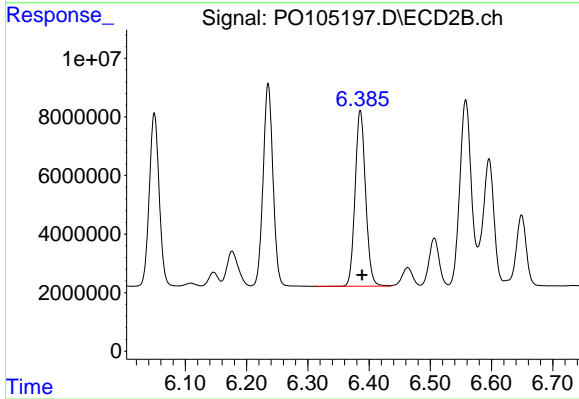
R.T.: 6.235 min
 Delta R.T.: -0.003 min
 Response: 76989577
 Conc: 457.56 ng/ml



#33 AR-1260-3

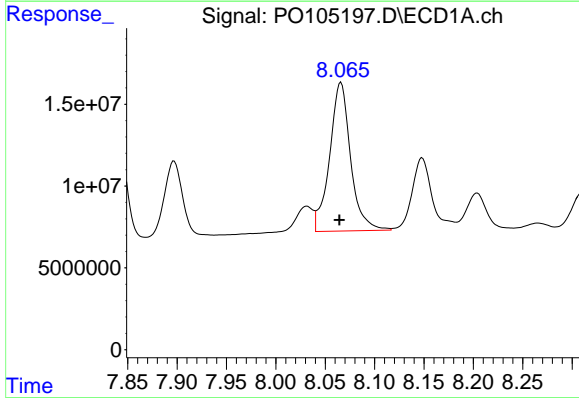
R.T.: 7.838 min
 Delta R.T.: 0.002 min
 Response: 106462485
 Conc: 415.21 ng/ml

Instrument :
 ECD_O
 ClientSampleId :
 AR1660CCC500



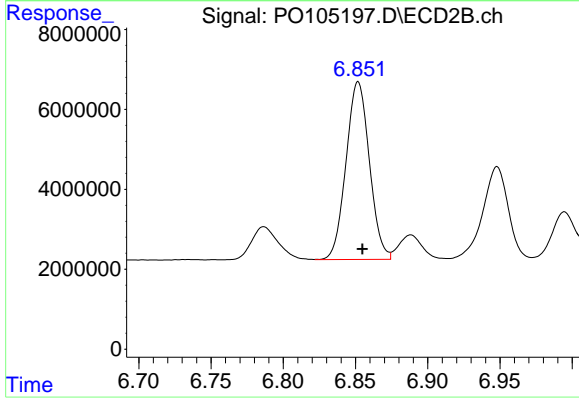
#33 AR-1260-3

R.T.: 6.386 min
 Delta R.T.: -0.003 min
 Response: 71428674
 Conc: 423.52 ng/ml



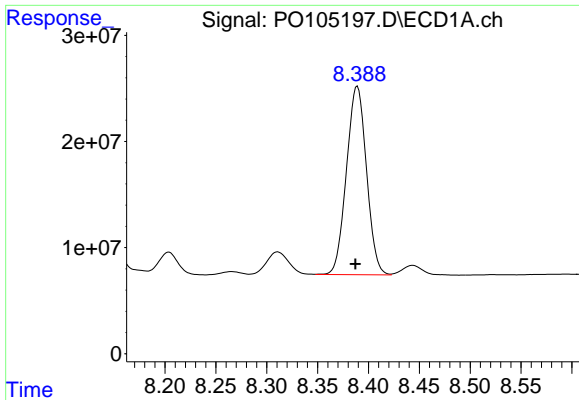
#34 AR-1260-4

R.T.: 8.066 min
 Delta R.T.: 0.002 min
 Response: 134323402
 Conc: 471.18 ng/ml



#34 AR-1260-4

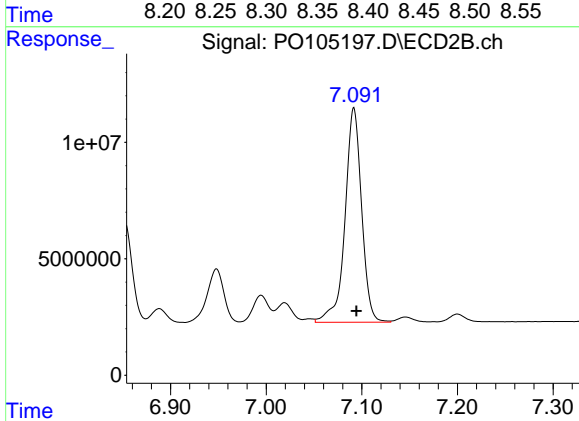
R.T.: 6.852 min
 Delta R.T.: -0.003 min
 Response: 50121820
 Conc: 457.69 ng/ml



#35 AR-1260-5

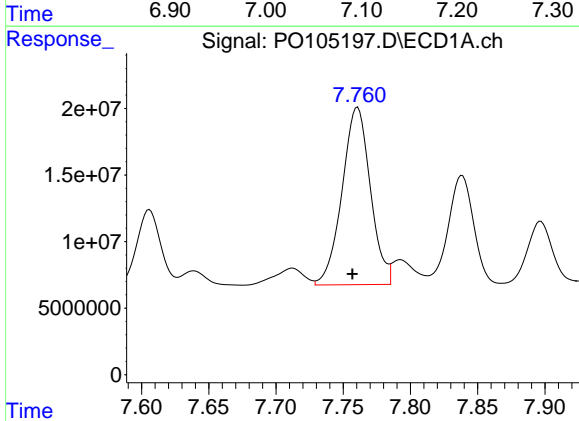
R.T.: 8.389 min
 Delta R.T.: 0.002 min
 Response: 243264217
 Conc: 435.21 ng/ml

Instrument :
 ECD_O
 ClientSampleId :
 AR1660CCC500



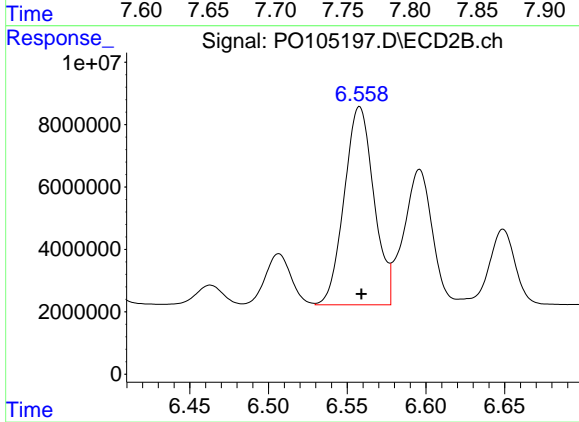
#35 AR-1260-5

R.T.: 7.092 min
 Delta R.T.: -0.003 min
 Response: 111801650
 Conc: 437.38 ng/ml



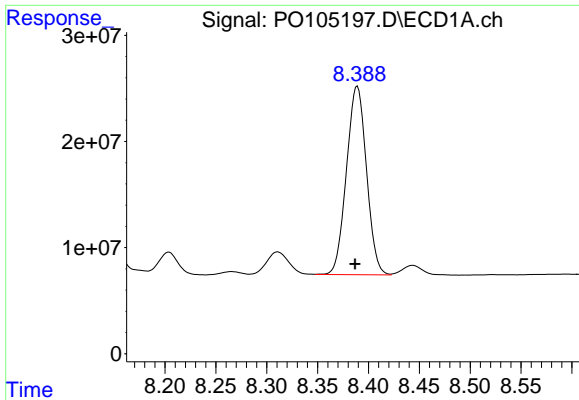
#36 AR-1262-1

R.T.: 7.761 min
 Delta R.T.: 0.004 min
 Response: 195031686
 Conc: 670.01 ng/ml



#36 AR-1262-1

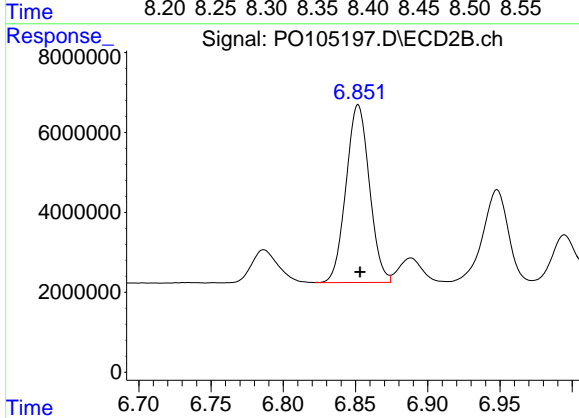
R.T.: 6.558 min
 Delta R.T.: -0.001 min
 Response: 83341801
 Conc: 824.31 ng/ml



#37 AR-1262-2

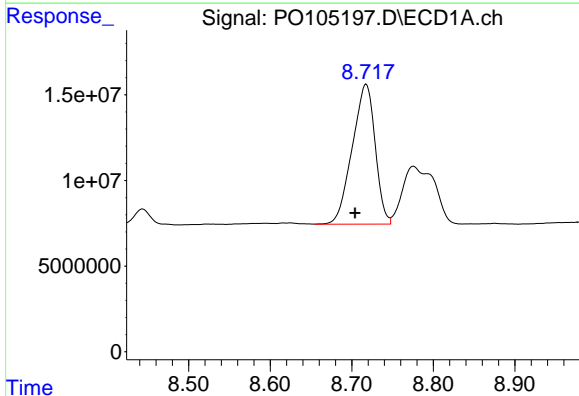
R.T.: 8.389 min
 Delta R.T.: 0.002 min
 Response: 243264217
 Conc: 331.19 ng/ml

Instrument :
 ECD_O
 ClientSampleId :
 AR1660CCC500



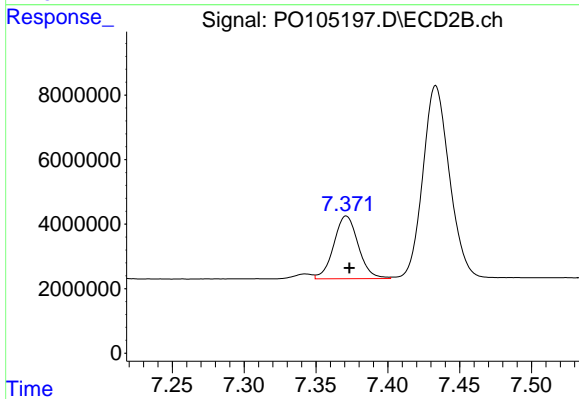
#37 AR-1262-2

R.T.: 6.852 min
 Delta R.T.: -0.001 min
 Response: 50121820
 Conc: 303.25 ng/ml



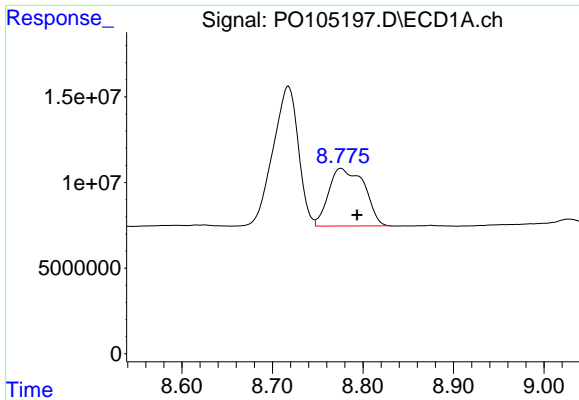
#38 AR-1262-3

R.T.: 8.718 min
 Delta R.T.: 0.014 min
 Response: 159401499
 Conc: 335.19 ng/ml



#38 AR-1262-3

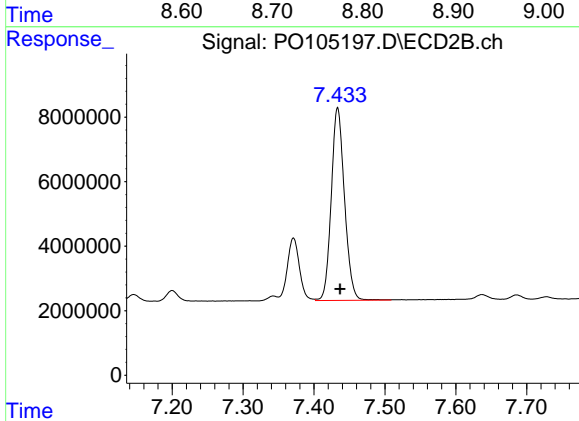
R.T.: 7.371 min
 Delta R.T.: -0.002 min
 Response: 23062761
 Conc: 183.48 ng/ml



#39 AR-1262-4

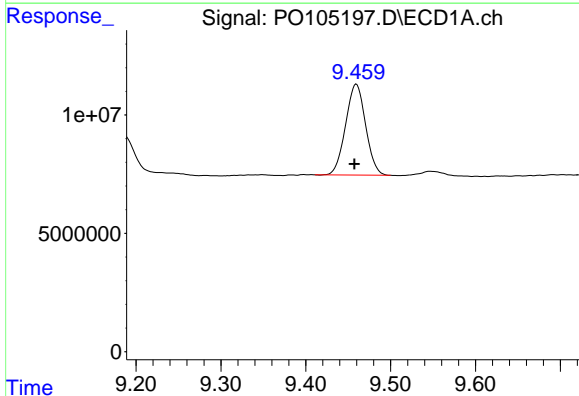
R.T.: 8.776 min
 Delta R.T.: -0.018 min
 Response: 91811383
 Conc: 265.30 ng/ml

Instrument :
 ECD_O
 ClientSampleId :
 AR1660CCC500



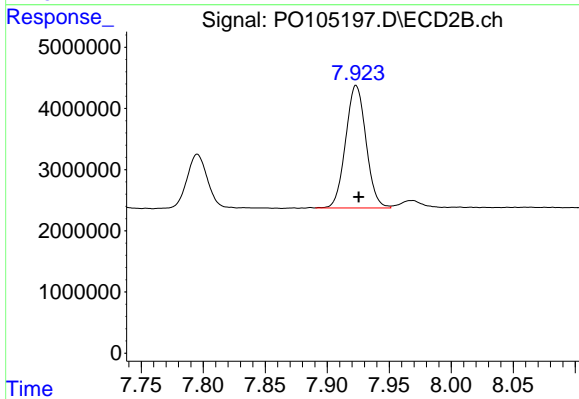
#39 AR-1262-4

R.T.: 7.433 min
 Delta R.T.: -0.004 min
 Response: 77384556
 Conc: 337.22 ng/ml



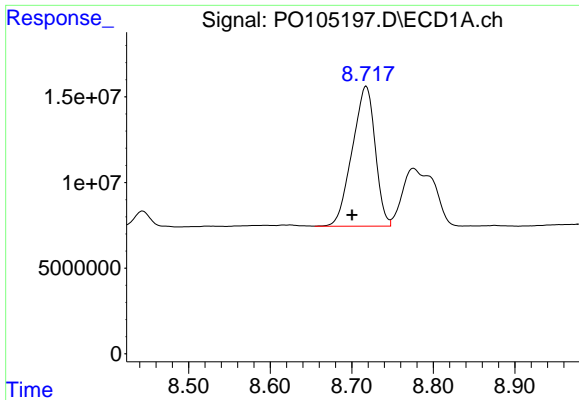
#40 AR-1262-5

R.T.: 9.460 min
 Delta R.T.: 0.002 min
 Response: 62981058
 Conc: 254.61 ng/ml



#40 AR-1262-5

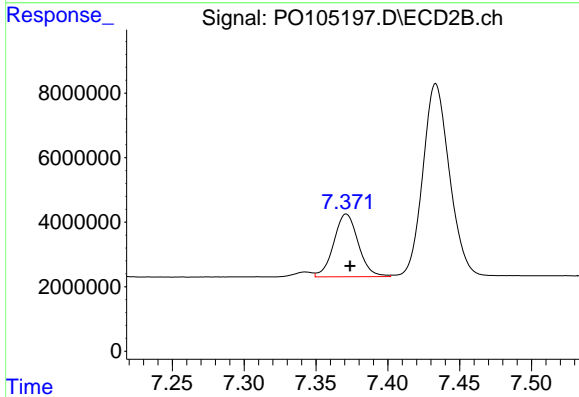
R.T.: 7.923 min
 Delta R.T.: -0.002 min
 Response: 22899031
 Conc: 233.01 ng/ml



#41 AR-1268-1

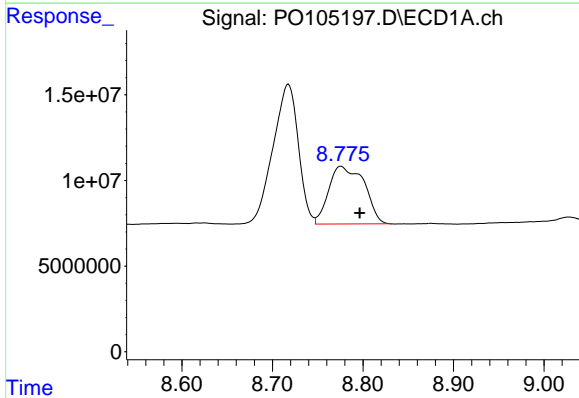
R.T.: 8.718 min
 Delta R.T.: 0.017 min
 Response: 159401499
 Conc: 202.16 ng/ml

Instrument :
 ECD_O
 ClientSampleId :
 AR1660CCC500



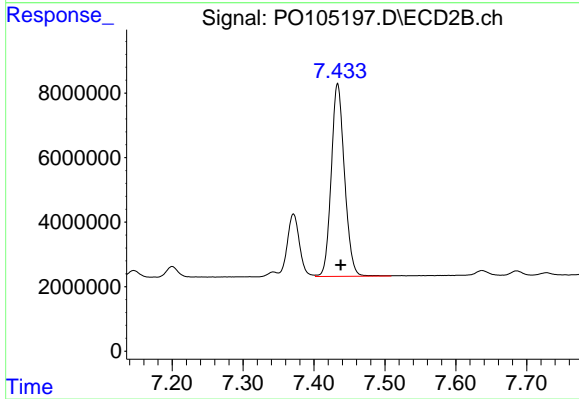
#41 AR-1268-1

R.T.: 7.371 min
 Delta R.T.: -0.003 min
 Response: 23062761
 Conc: 65.55 ng/ml



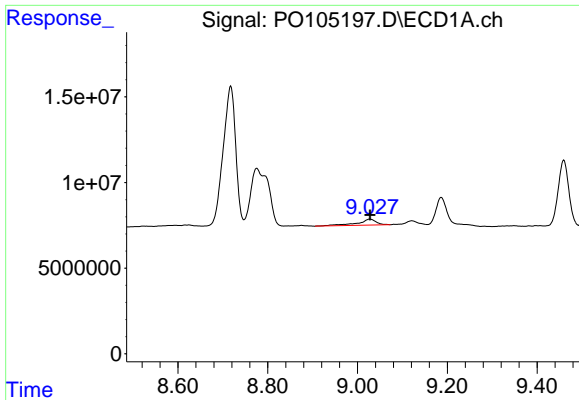
#42 AR-1268-2

R.T.: 8.776 min
 Delta R.T.: -0.021 min
 Response: 91811383
 Conc: 132.43 ng/ml



#42 AR-1268-2

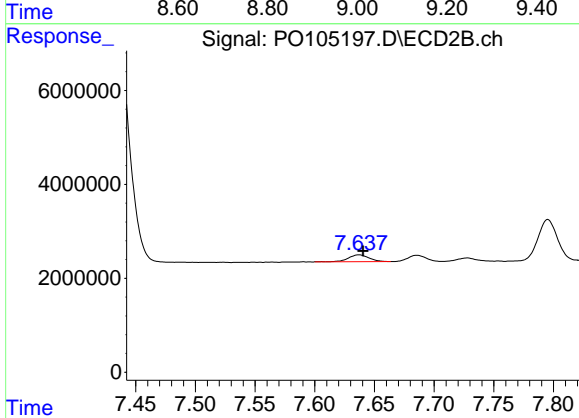
R.T.: 7.433 min
 Delta R.T.: -0.004 min
 Response: 77384556
 Conc: 249.52 ng/ml



#43 AR-1268-3

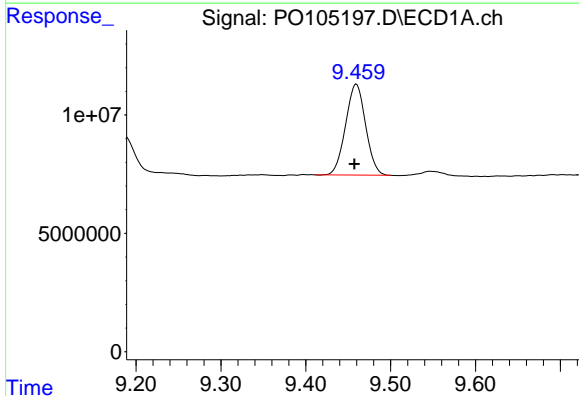
R.T.: 9.028 min
 Delta R.T.: 0.000 min
 Response: 10183697
 Conc: 17.06 ng/ml

Instrument :
 ECD_O
 ClientSampleId :
 AR1660CCC500



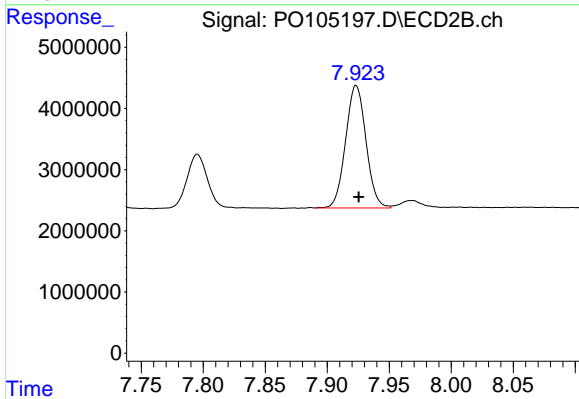
#43 AR-1268-3

R.T.: 7.637 min
 Delta R.T.: -0.003 min
 Response: 1747605
 Conc: 6.96 ng/ml



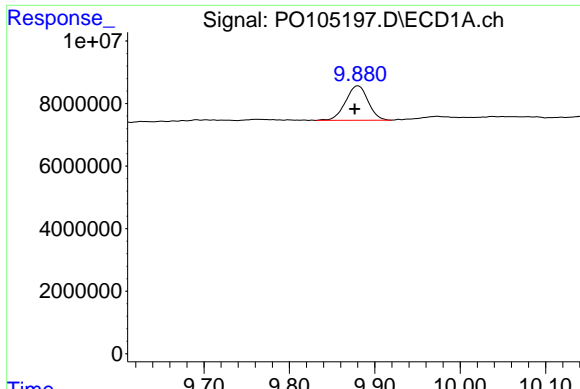
#44 AR-1268-4

R.T.: 9.460 min
 Delta R.T.: 0.002 min
 Response: 62981058
 Conc: 249.62 ng/ml



#44 AR-1268-4

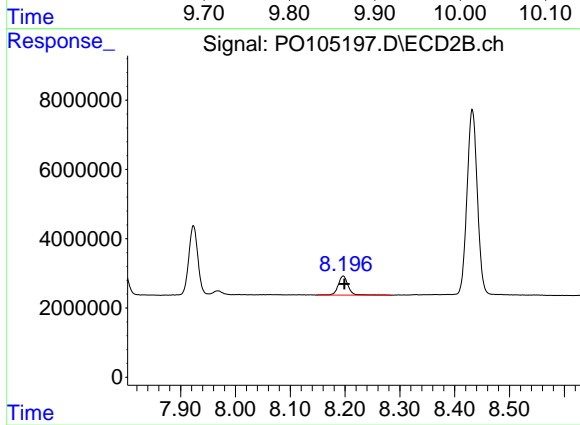
R.T.: 7.923 min
 Delta R.T.: -0.002 min
 Response: 22899031
 Conc: 219.96 ng/ml



#45 AR-1268-5

R.T.: 9.880 min
 Delta R.T.: 0.004 min
 Response: 20209952
 Conc: 10.31 ng/ml

Instrument :
 ECD_O
 ClientSampleId :
 AR1660CCC500



#45 AR-1268-5

R.T.: 8.197 min
 Delta R.T.: -0.002 min
 Response: 7020856
 Conc: 10.48 ng/ml