

Data Path : Z:\pestpcbsrv\HPCHEM1\ECD_O\Data\PO080618\
 Data File : PO047709.D
 Signal(s) : Signal #1: ECD1A.CH Signal #2: ECD2B.CH
 Acq On : 06 Aug 2018 8:01
 Operator : SM/SJ
 Sample : AR1660CCC500
 Misc :
 ALS Vial : 3 Sample Multiplier: 1

Instrument :
 ECD_O
 ClientSampled :
 AR1660CCC500

Integration File signal 1: autoint1.e
 Integration File signal 2: autoint2.e
 Quant Time: Aug 06 08:15:47 2018
 Quant Method : Z:\pestpcbsrv\HPCHEM1\ECD_O\methods\PO072718.M
 Quant Title : GC EXTRACTABLES
 QLast Update : Fri Jul 27 02:33:29 2018
 Response via : Initial Calibration
 Integrator: ChemStation 6890 Scale Mode: Small noise peaks clipped

Volume Inj. : 2 µl
 Signal #1 Phase : ZB-MR1 Signal #2 Phase: ZB-MR2
 Signal #1 Info : 30Mx0.32mmx 0.50µ Signal #2 Info : 30M x 0.32mm x 0.25µm

Compound	RT#1	RT#2	Resp#1	Resp#2	ng/ml	ng/ml

System Monitoring Compounds						
1) SA Tetrachlo...	4.407	3.644	12010388	12400285	59.487	50.466
2) SA Decachlor...	10.102	8.633	7053871	7222090	43.249	45.944
Target Compounds						
3) L1 AR-1016-1	5.307	4.506	2716058	2977133	568.632	520.748
4) L1 AR-1016-2	5.658	4.921	3281528	2864957	557.415	545.652
5) L1 AR-1016-3	5.756	4.960	2657459	2254462	535.857	513.445
6) L1 AR-1016-4	6.050	5.002	2534554	2724319	544.906	525.377
7) L1 AR-1016-5	6.191	5.174	2663413	2900090	510.918	494.427
8) L2 AR-1221-1	4.611	3.856	384749	371737	173.978	157.533
9) L2 AR-1221-2	4.704	3.943	580627	615547	355.080	339.320
10) L2 AR-1221-3	4.779	4.018	2134931	2176682	413.521	376.550
11) L3 AR-1232-1	5.113	4.315	2878032	4583711	1338.291	1949.079 #
12) L3 AR-1232-2	5.574	4.726	3744143	3768340	1272.452	1233.139
13) L3 AR-1232-3	5.596	4.745	5270031	5368821	1226.664	1162.635
14) L3 AR-1232-4	5.658	4.800	3281528	3927861	1185.574	1270.586
15) L3 AR-1232-5	5.756	4.960	2657459	2254462	1190.017	1259.674
16) L4 AR-1242-1	5.596	4.745	5270031	5368821	717.002	670.412
17) L4 AR-1242-2	5.658	4.921	3281528	2864957	709.007	695.435
18) L4 AR-1242-3	5.756	5.002	2657459	2724319	691.681	649.604
19) L4 AR-1242-4	6.050	5.174	2534554	2900090	659.311	614.135
20) L4 AR-1242-5	6.191	5.322	2663413	3083430	622.210	796.403 #
21) L5 AR-1248-1	6.050	5.174	2534554	2900090	405.328	388.741
22) L5 AR-1248-2	6.191	5.322	2663413	3083430	488.918	576.345
23) L5 AR-1248-3	6.452	5.524	814068	2791296	115.678	280.520 #
24) L5 AR-1248-4	6.490	5.565	657918	706872	98.003	100.864
25) L5 AR-1248-5	6.642	6.088	1862136	4444421	263.100	932.571 #
26) L6 AR-1254-1	6.642	5.524	1862136	2791296	152.274	226.842 #
27) L6 AR-1254-2	6.923	5.671	301339	1941901	40.406	186.546 #
28) L6 AR-1254-3	7.010	6.088	1137436	4444421	87.217	256.083 #
29) L6 AR-1254-4	7.292	6.301	557188	320896	57.169	29.616 #
30) L6 AR-1254-5	7.555	6.623	2107717	618018	285.297	80.811 #
31) L7 AR-1260-1	7.171	6.203	4056303	5015240	432.576	453.866
32) L7 AR-1260-2	7.426	6.389	4831652	6048135	433.285	451.083
33) L7 AR-1260-3	7.708	6.717	5466539	6253638	424.880	430.163
34) L7 AR-1260-4	8.325	7.254	7345997	9555871	412.979	434.285
35) L7 AR-1260-5	8.646	7.600	4807823	6879776	421.022	441.021
36) L8 AR-1262-1	7.171	6.389	4056303	6048135	489.625	533.438
37) L8 AR-1262-2	7.426	6.544	4831652	5444442	498.536	482.470
38) L8 AR-1262-3	7.783	6.755	3487942	4654911	284.211	308.434

Data Path : Z:\pestpcbsrv\HPCHEM1\ECD_O\Data\PO080618\
 Data File : PO047709.D
 Signal(s) : Signal #1: ECD1A.CH Signal #2: ECD2B.CH
 Acq On : 06 Aug 2018 8:01
 Operator : SM/SJ
 Sample : AR1660CCC500
 Misc :
 ALS Vial : 3 Sample Multiplier: 1

Instrument :
 ECD_O
 ClientSampleId :
 AR1660CCC500

Integration File signal 1: autoint1.e
 Integration File signal 2: autoint2.e
 Quant Time: Aug 06 08:15:47 2018
 Quant Method : Z:\pestpcbsrv\HPCHEM1\ECD_O\methods\PO072718.M
 Quant Title : GC EXTRACTABLES
 QLast Update : Fri Jul 27 02:33:29 2018
 Response via : Initial Calibration
 Integrator: ChemStation 6890 Scale Mode: Small noise peaks clipped

Volume Inj. : 2 µl
 Signal #1 Phase : ZB-MR1 Signal #2 Phase: ZB-MR2
 Signal #1 Info : 30Mx0.32mmx 0.50µ Signal #2 Info : 30M x 0.32mm x 0.25µm

Compound	RT#1	RT#2	Resp#1	Resp#2	ng/ml	ng/ml
39) L8 AR-1262-4	8.009	7.014	3905465	4230949	331.654	321.299
40) L8 AR-1262-5	8.325	7.254	7345997	9555871	341.903	369.972
41) L9 AR-1268-1	8.646	7.537	4807823	2200282	207.150	84.628 #
42) L9 AR-1268-2	8.718	7.600	1239269	6879776	57.838	276.155 #
43) L9 AR-1268-3	8.945	7.807	105799	138100	5.860	6.998
44) L9 AR-1268-4	9.367	8.093	2085490	2220034	261.539	264.651
45) L9 AR-1268-5	9.772	8.381	600322	627004	11.018	11.484

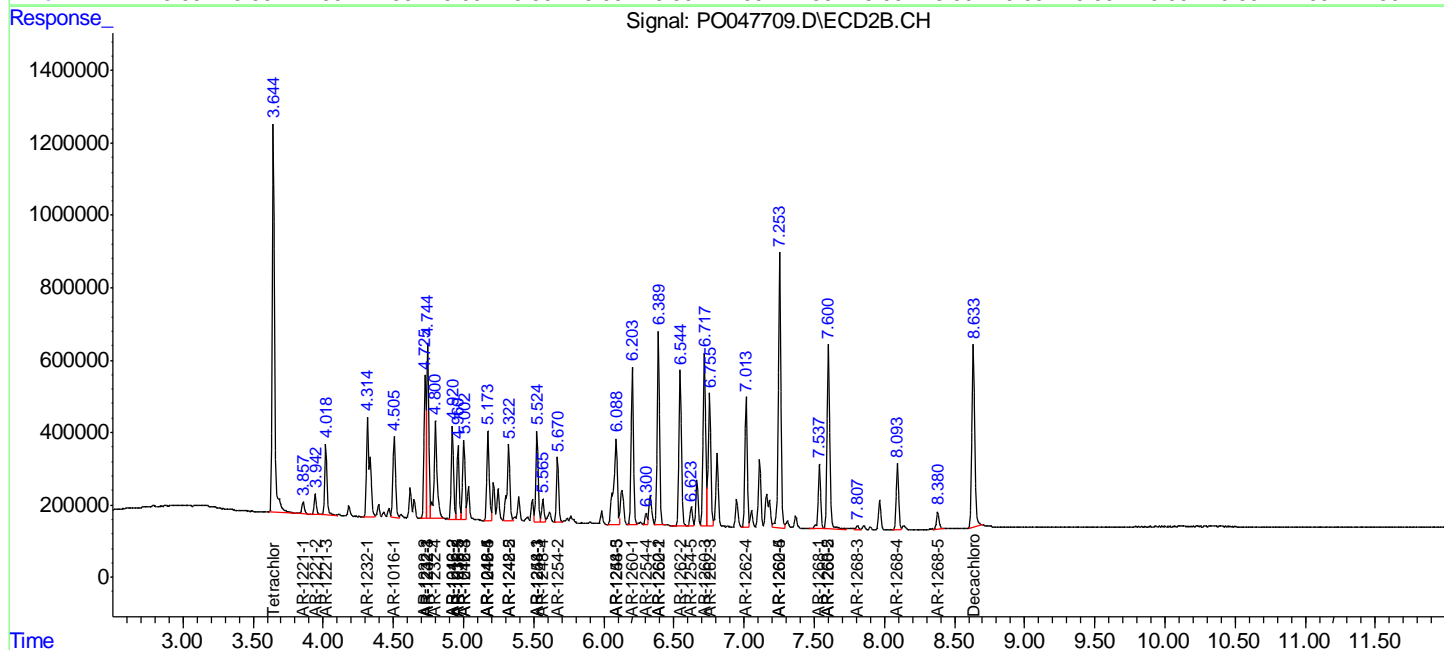
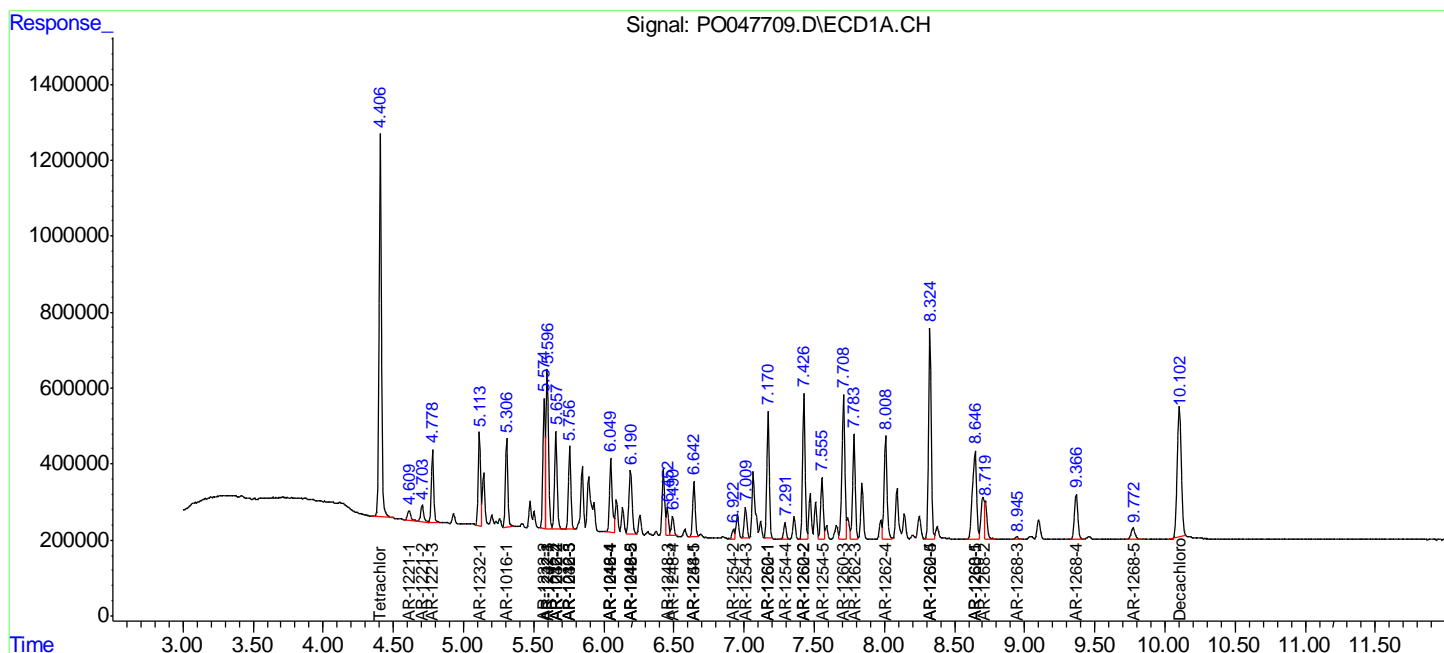
(f)=RT Delta > 1/2 Window (#)=Amounts differ by > 25% (m)=manual int.

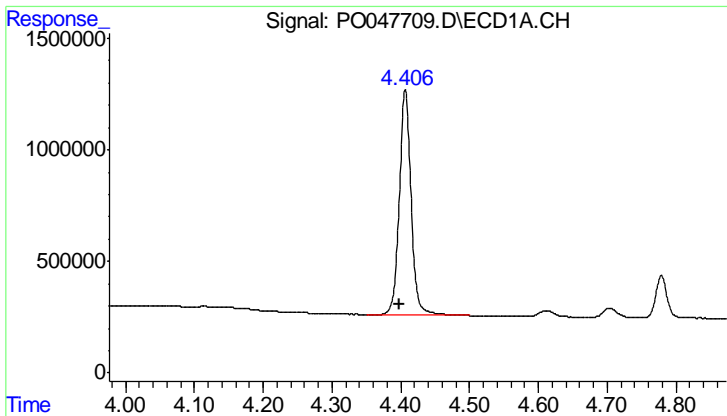
Data Path : Z:\pestpcbsrv\HPCHEM1\ECD_O\Data\PO080618\
 Data File : PO047709.D
 Signal(s) : Signal #1: ECD1A.CH Signal #2: ECD2B.CH
 Acq On : 06 Aug 2018 8:01
 Operator : SM/SJ
 Sample : AR1660CCC500
 Misc :
 ALS Vial : 3 Sample Multiplier: 1

Instrument :
 ECD_O
 Client Sampled :
 AR1660CCC500

Integration File signal 1: autoint1.e
 Integration File signal 2: autoint2.e
 Quant Time: Aug 06 08:15:47 2018
 Quant Method : Z:\pestpcbsrv\HPCHEM1\ECD_O\methods\PO072718.M
 Quant Title : GC EXTRACTABLES
 QLast Update : Fri Jul 27 02:33:29 2018
 Response via : Initial Calibration
 Integrator: ChemStation 6890 Scale Mode: Small noise peaks clipped

Volume Inj. : 2 µl
 Signal #1 Phase : ZB-MR1 Signal #2 Phase: ZB-MR2
 Signal #1 Info : 30Mx0.32mmx 0.50µ Signal #2 Info : 30M x 0.32mm x 0.25µm

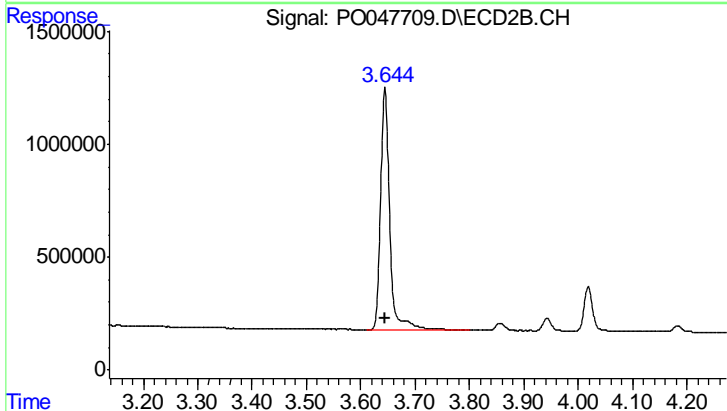




#1 Tetrachloro-m-xylene

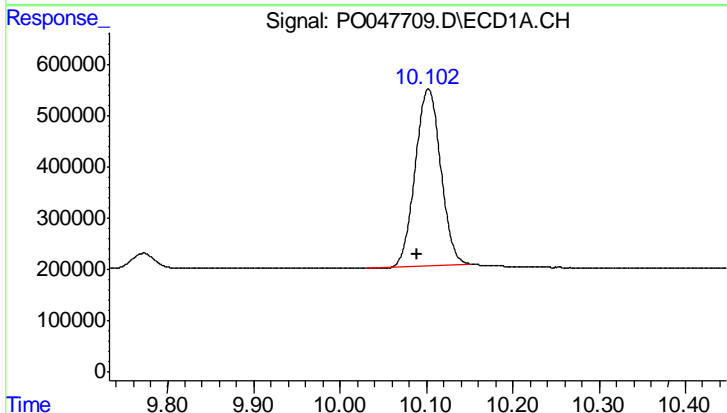
R.T.: 4.407 min
 Delta R.T.: 0.009 min
 Response: 12010388
 Conc: 59.49 ng/ml

Instrument :
 ECD_O
 ClientSampleId :
 AR1660CCC500



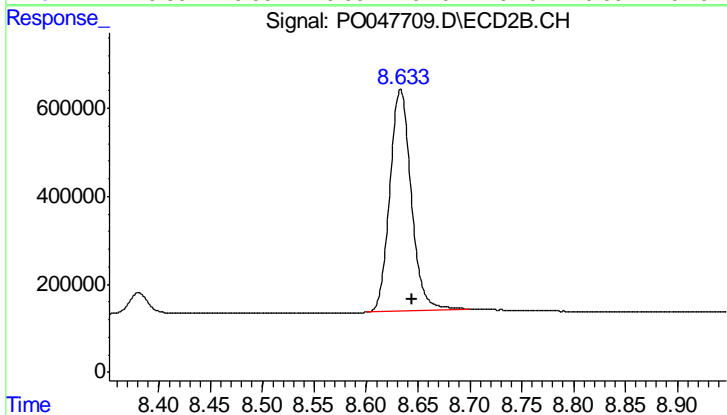
#1 Tetrachloro-m-xylene

R.T.: 3.644 min
 Delta R.T.: 0.000 min
 Response: 12400285
 Conc: 50.47 ng/ml



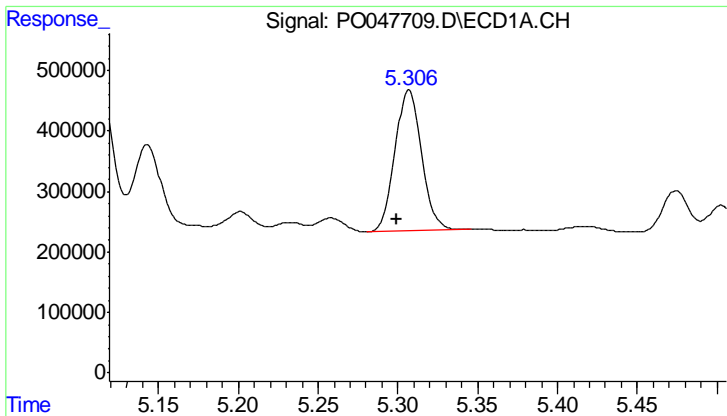
#2 Decachlorobiphenyl

R.T.: 10.102 min
 Delta R.T.: 0.012 min
 Response: 7053871
 Conc: 43.25 ng/ml



#2 Decachlorobiphenyl

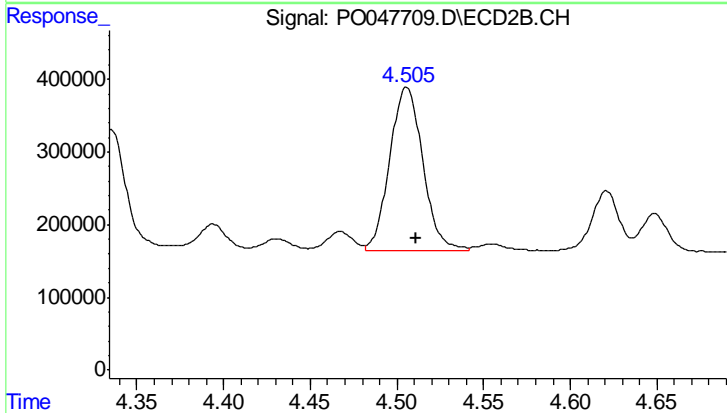
R.T.: 8.633 min
 Delta R.T.: -0.011 min
 Response: 7222090
 Conc: 45.94 ng/ml



#3 AR-1016-1

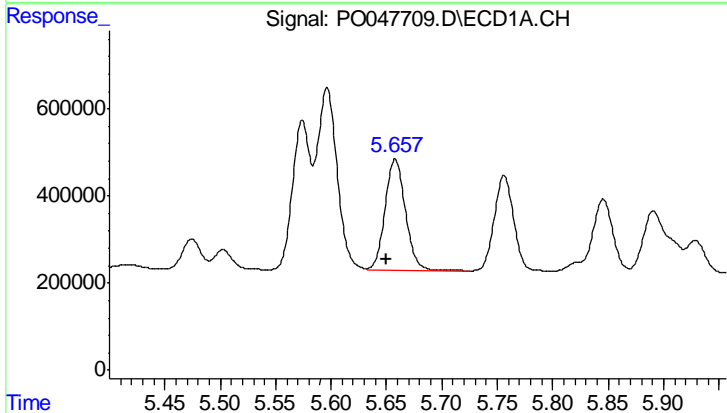
R.T.: 5.307 min
 Delta R.T.: 0.007 min
 Response: 2716058
 Conc: 568.63 ng/ml

Instrument :
 ECD_O
 ClientSampleId :
 AR1660CCC500



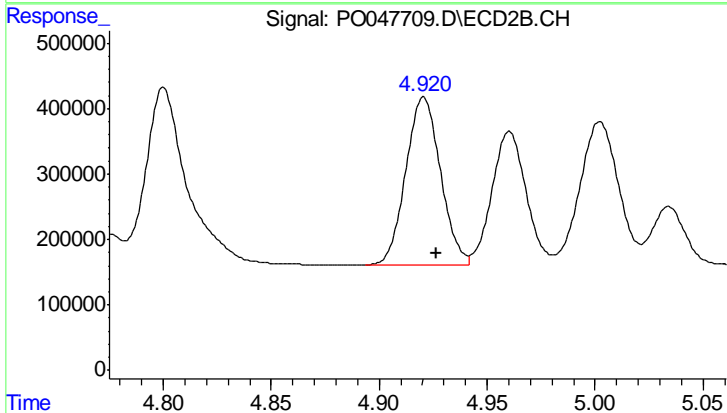
#3 AR-1016-1

R.T.: 4.506 min
 Delta R.T.: -0.006 min
 Response: 2977133
 Conc: 520.75 ng/ml



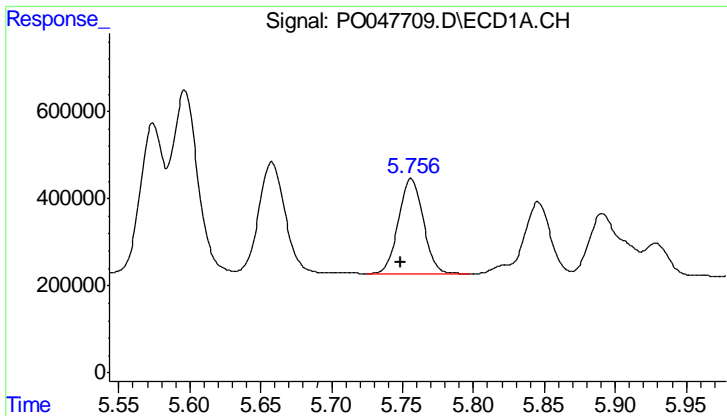
#4 AR-1016-2

R.T.: 5.658 min
 Delta R.T.: 0.007 min
 Response: 3281528
 Conc: 557.42 ng/ml



#4 AR-1016-2

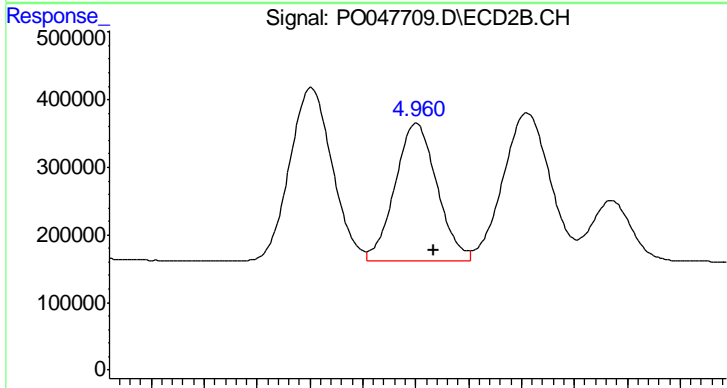
R.T.: 4.921 min
 Delta R.T.: -0.006 min
 Response: 2864957
 Conc: 545.65 ng/ml



#5 AR-1016-3

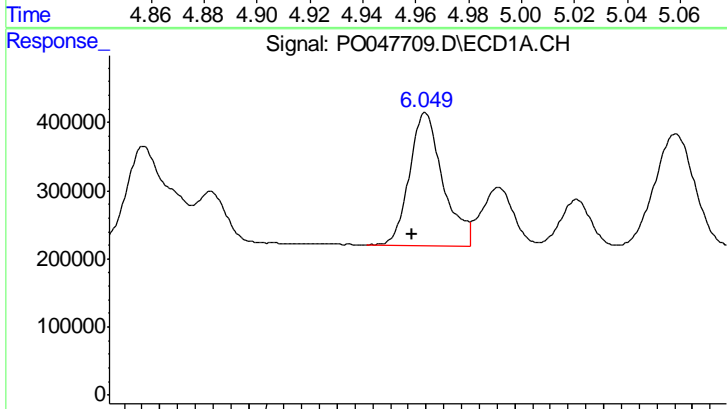
R.T.: 5.756 min
 Delta R.T.: 0.007 min
 Response: 2657459
 Conc: 535.86 ng/ml

Instrument :
 ECD_O
 ClientSampled :
 AR1660CCC500



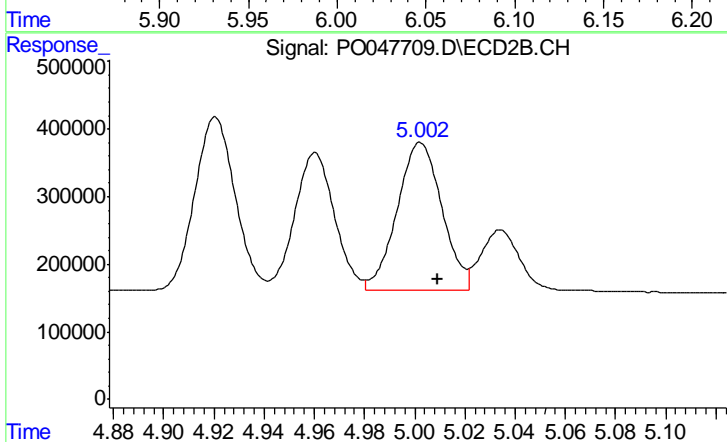
#5 AR-1016-3

R.T.: 4.960 min
 Delta R.T.: -0.007 min
 Response: 2254462
 Conc: 513.44 ng/ml



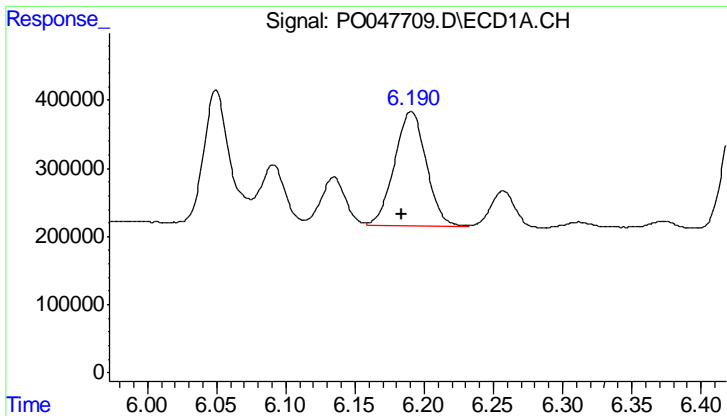
#6 AR-1016-4

R.T.: 6.050 min
 Delta R.T.: 0.007 min
 Response: 2534554
 Conc: 544.91 ng/ml



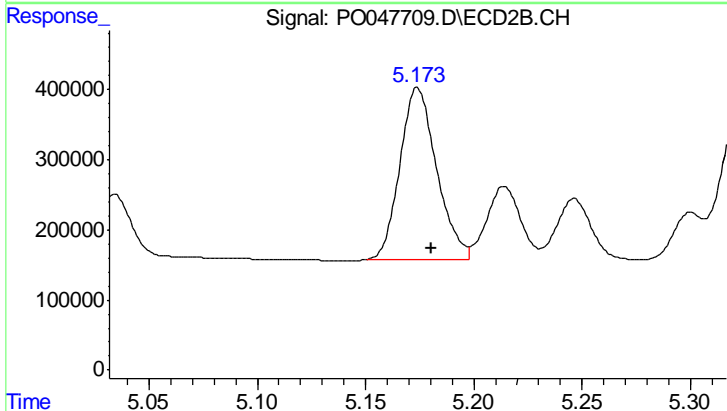
#6 AR-1016-4

R.T.: 5.002 min
 Delta R.T.: -0.007 min
 Response: 2724319
 Conc: 525.38 ng/ml

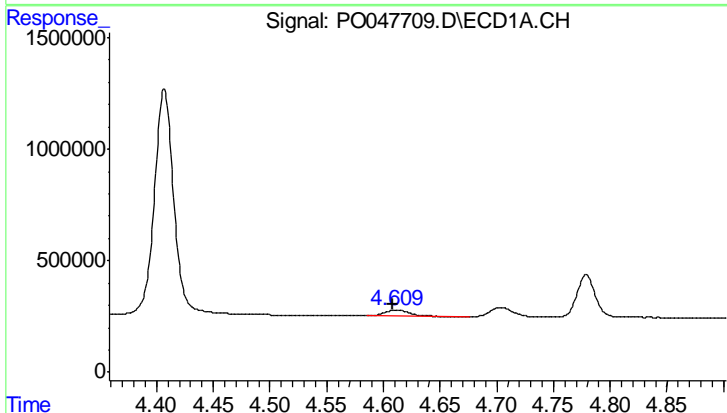


#7 AR-1016-5
 R.T.: 6.191 min
 Delta R.T.: 0.007 min
 Response: 2663413
 Conc: 510.92 ng/ml

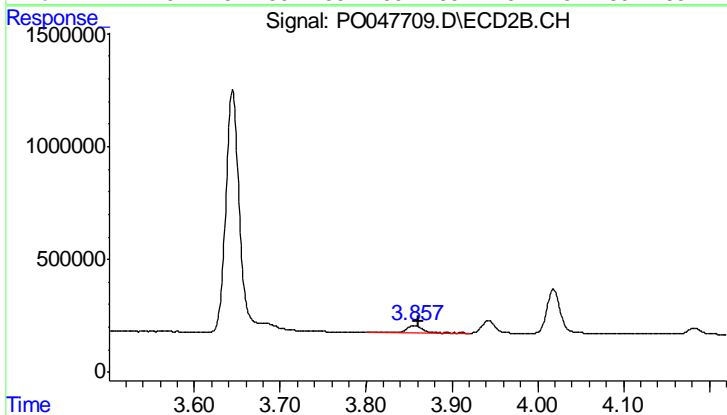
Instrument :
 ECD_O
 ClientSampled :
 AR1660CCC500



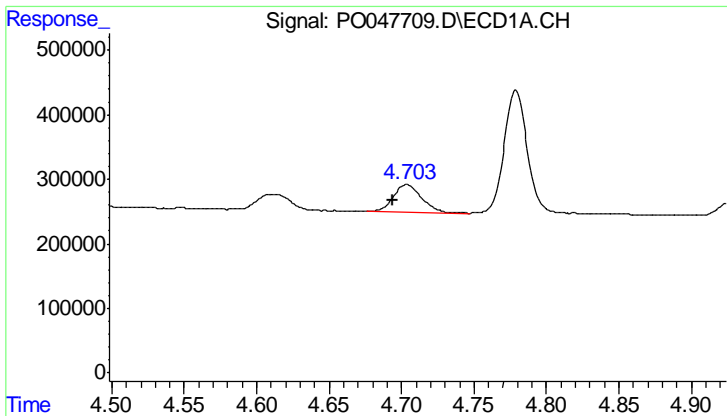
#7 AR-1016-5
 R.T.: 5.174 min
 Delta R.T.: -0.006 min
 Response: 2900090
 Conc: 494.43 ng/ml



#8 AR-1221-1
 R.T.: 4.611 min
 Delta R.T.: 0.002 min
 Response: 384749
 Conc: 173.98 ng/ml

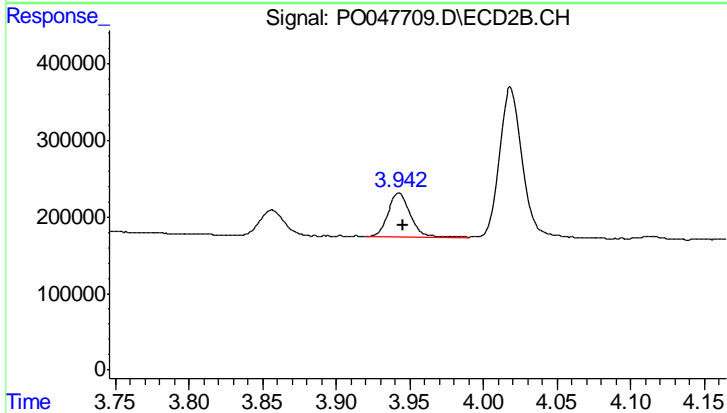


#8 AR-1221-1
 R.T.: 3.856 min
 Delta R.T.: -0.004 min
 Response: 371737
 Conc: 157.53 ng/ml

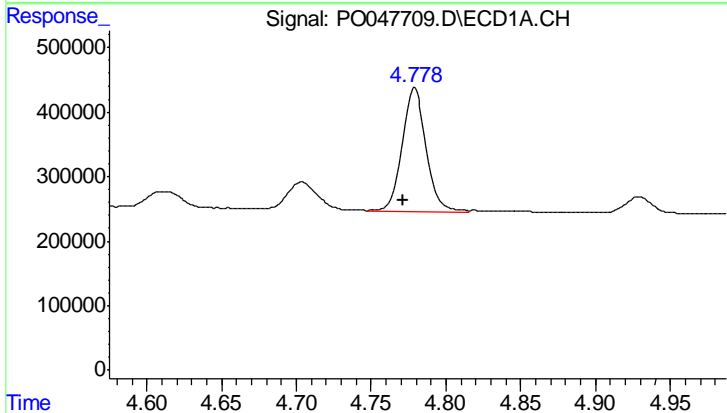


#9 AR-1221-2
 R.T.: 4.704 min
 Delta R.T.: 0.010 min
 Response: 580627
 Conc: 355.08 ng/ml

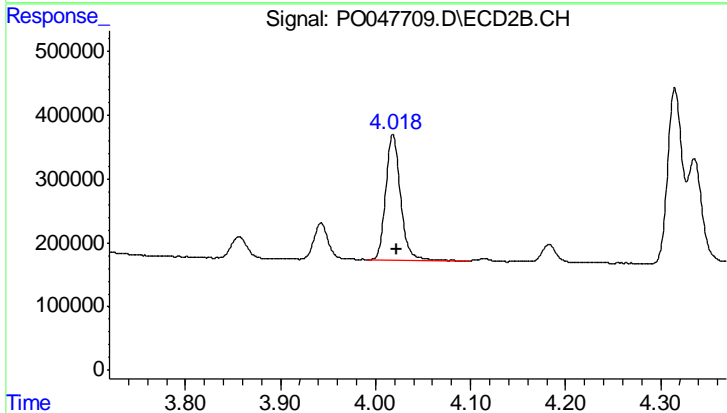
Instrument :
 ECD_O
 ClientSampled :
 AR1660CCC500



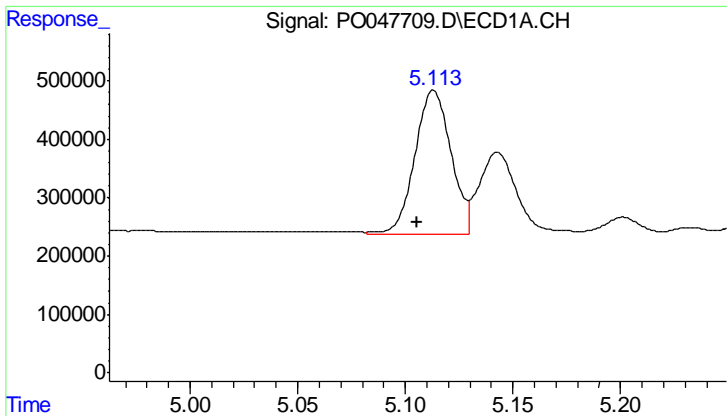
#9 AR-1221-2
 R.T.: 3.943 min
 Delta R.T.: -0.003 min
 Response: 615547
 Conc: 339.32 ng/ml



#10 AR-1221-3
 R.T.: 4.779 min
 Delta R.T.: 0.008 min
 Response: 2134931
 Conc: 413.52 ng/ml



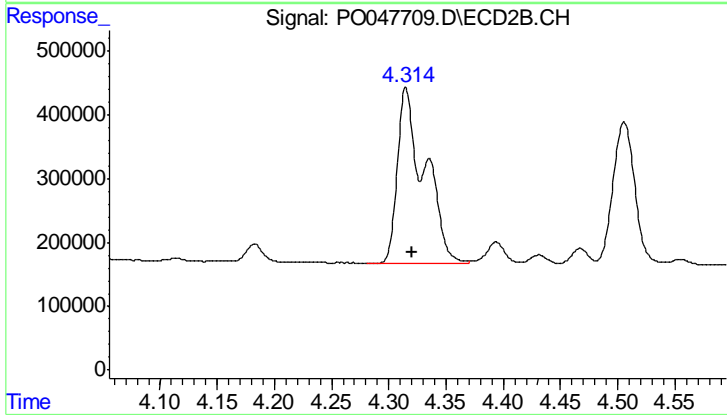
#10 AR-1221-3
 R.T.: 4.018 min
 Delta R.T.: -0.004 min
 Response: 2176682
 Conc: 376.55 ng/ml



#11 AR-1232-1

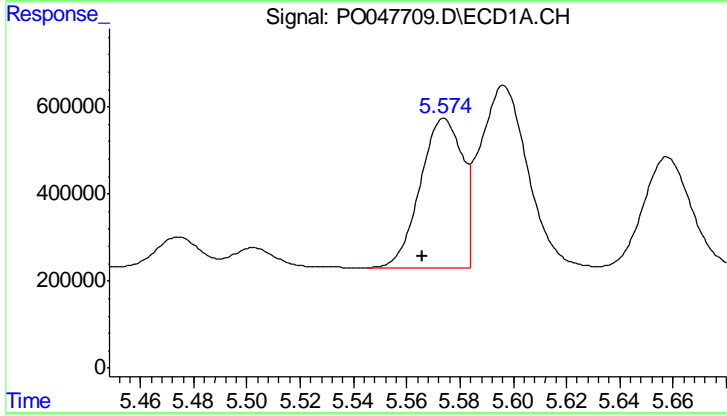
R.T.: 5.113 min
 Delta R.T.: 0.008 min
 Response: 2878032
 Conc: 1338.29 ng/ml

Instrument :
 ECD_O
 ClientSampleId :
 AR1660CCC500



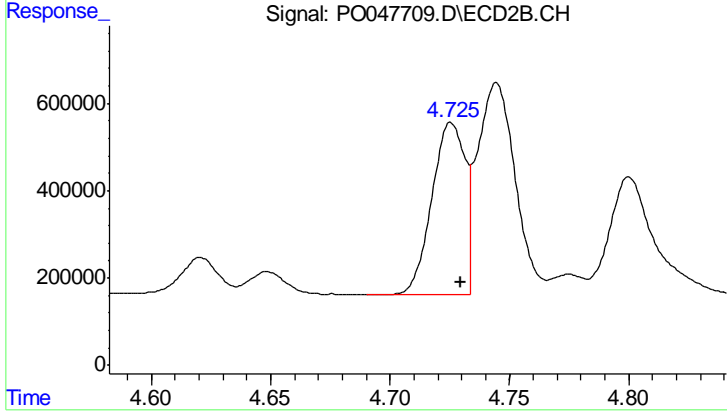
#11 AR-1232-1

R.T.: 4.315 min
 Delta R.T.: -0.005 min
 Response: 4583711
 Conc: 1949.08 ng/ml



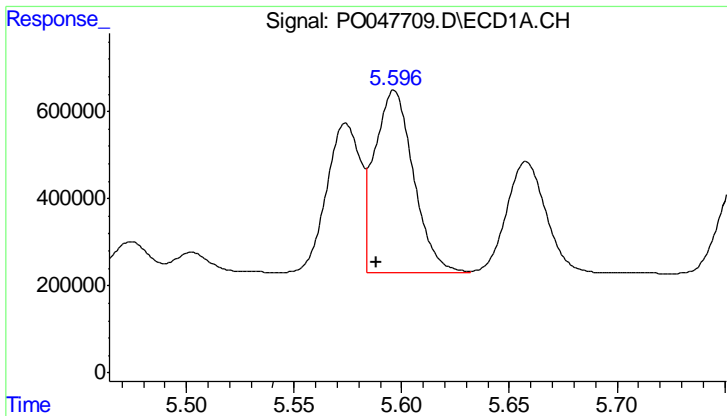
#12 AR-1232-2

R.T.: 5.574 min
 Delta R.T.: 0.008 min
 Response: 3744143
 Conc: 1272.45 ng/ml



#12 AR-1232-2

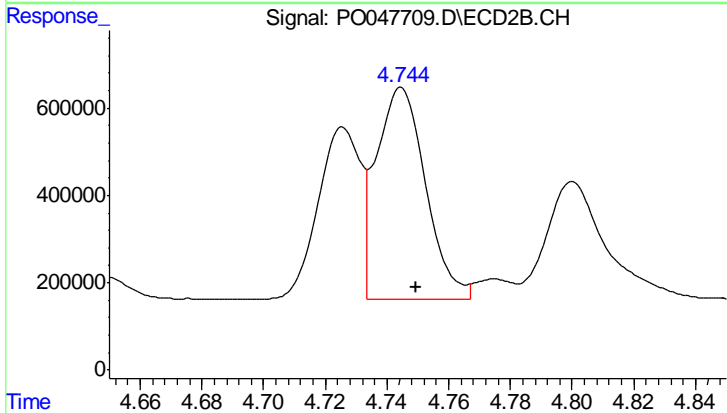
R.T.: 4.726 min
 Delta R.T.: -0.004 min
 Response: 3768340
 Conc: 1233.14 ng/ml



#13 AR-1232-3

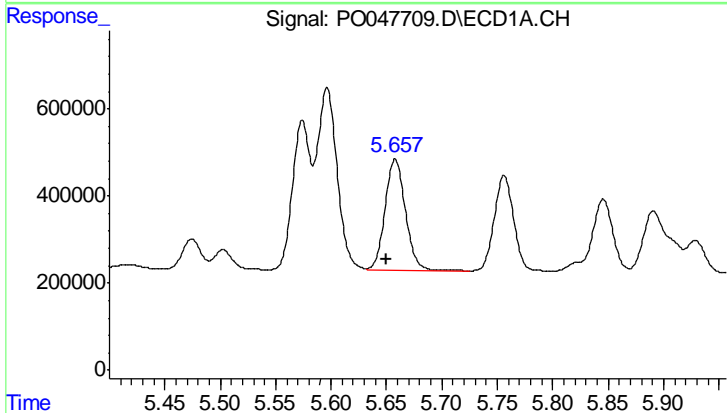
R.T.: 5.596 min
 Delta R.T.: 0.008 min
 Response: 5270031
 Conc: 1226.66 ng/ml

Instrument :
 ECD_O
 ClientSampleId :
 AR1660CCC500



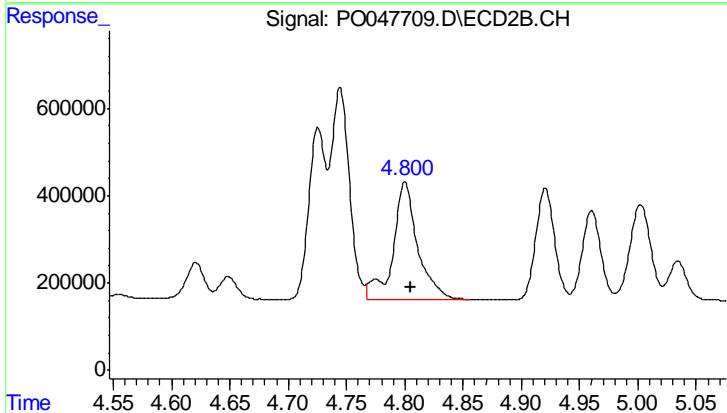
#13 AR-1232-3

R.T.: 4.745 min
 Delta R.T.: -0.005 min
 Response: 5368821
 Conc: 1162.64 ng/ml



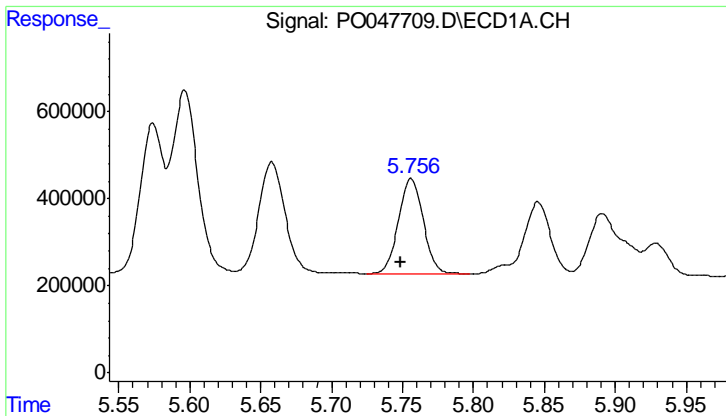
#14 AR-1232-4

R.T.: 5.658 min
 Delta R.T.: 0.008 min
 Response: 3281528
 Conc: 1185.57 ng/ml



#14 AR-1232-4

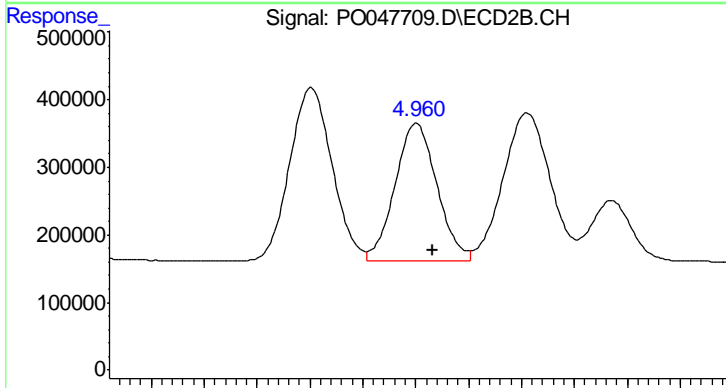
R.T.: 4.800 min
 Delta R.T.: -0.005 min
 Response: 3927861
 Conc: 1270.59 ng/ml



#15 AR-1232-5

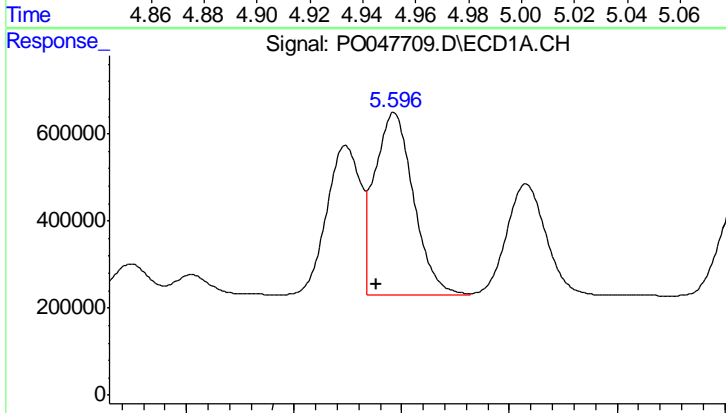
R.T.: 5.756 min
 Delta R.T.: 0.007 min
 Response: 2657459
 Conc: 1190.02 ng/ml

Instrument :
 ECD_O
 ClientSampled :
 AR1660CCC500



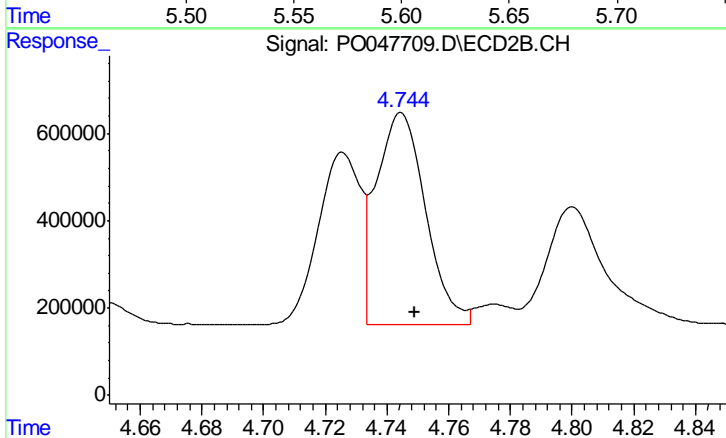
#15 AR-1232-5

R.T.: 4.960 min
 Delta R.T.: -0.006 min
 Response: 2254462
 Conc: 1259.67 ng/ml



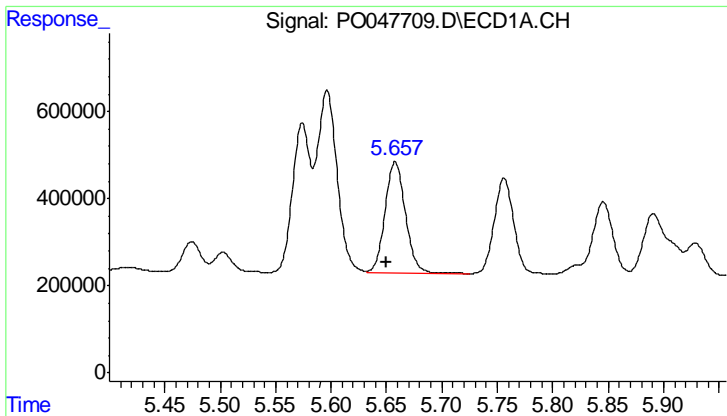
#16 AR-1242-1

R.T.: 5.596 min
 Delta R.T.: 0.009 min
 Response: 5270031
 Conc: 717.00 ng/ml



#16 AR-1242-1

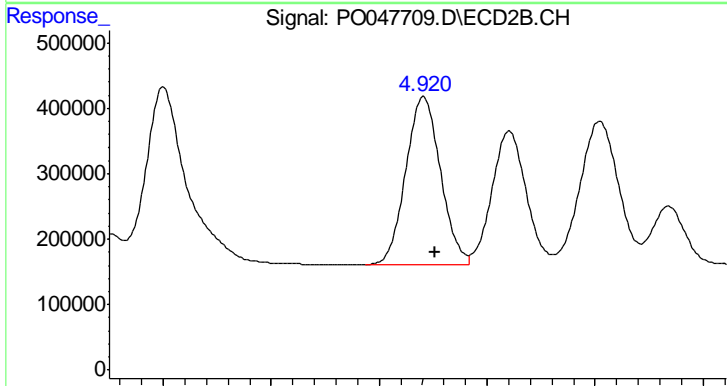
R.T.: 4.745 min
 Delta R.T.: -0.004 min
 Response: 5368821
 Conc: 670.41 ng/ml



#17 AR-1242-2

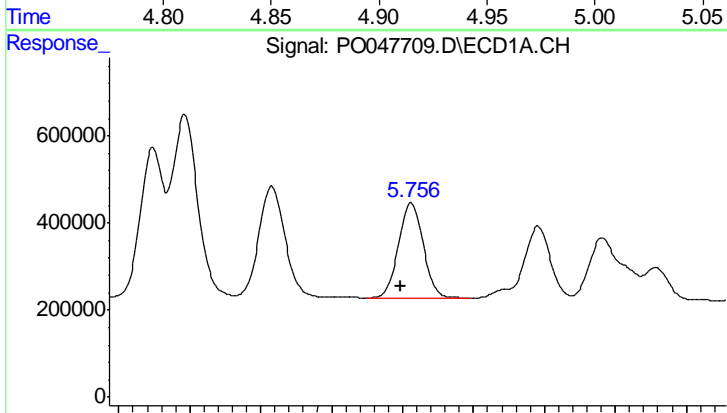
R.T.: 5.658 min
 Delta R.T.: 0.007 min
 Response: 3281528
 Conc: 709.01 ng/ml

Instrument :
 ECD_O
 ClientSampled :
 AR1660CCC500



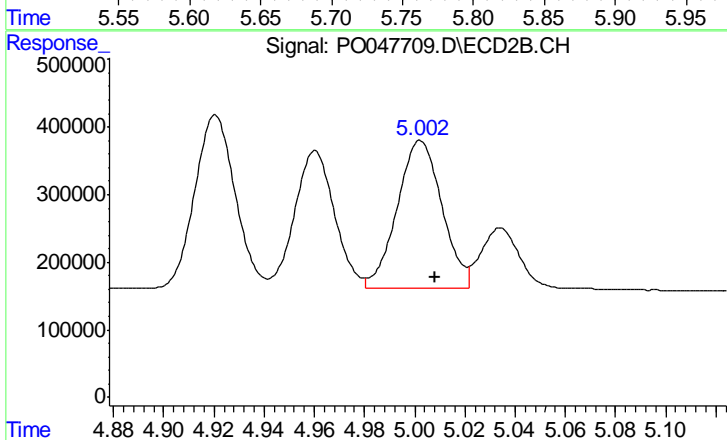
#17 AR-1242-2

R.T.: 4.921 min
 Delta R.T.: -0.005 min
 Response: 2864957
 Conc: 695.43 ng/ml



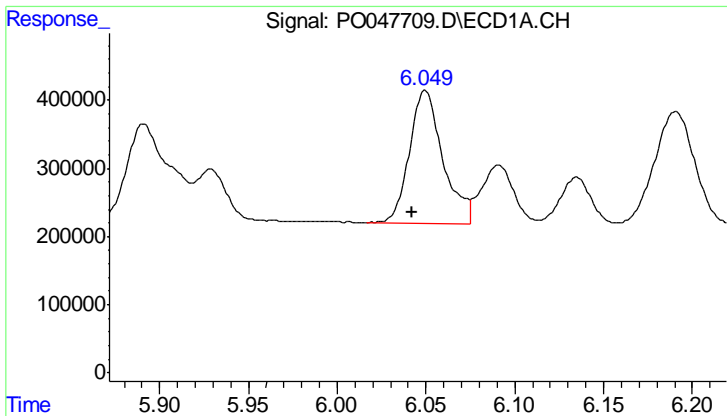
#18 AR-1242-3

R.T.: 5.756 min
 Delta R.T.: 0.007 min
 Response: 2657459
 Conc: 691.68 ng/ml



#18 AR-1242-3

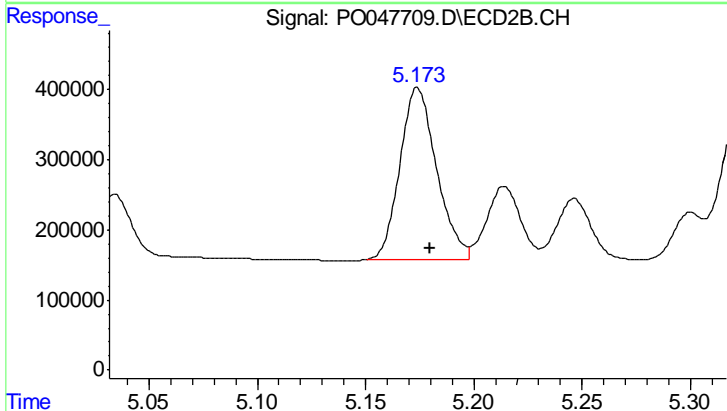
R.T.: 5.002 min
 Delta R.T.: -0.006 min
 Response: 2724319
 Conc: 649.60 ng/ml



#19 AR-1242-4

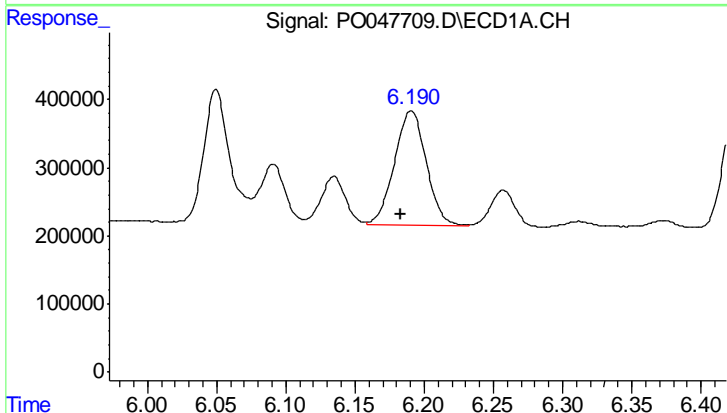
R.T.: 6.050 min
 Delta R.T.: 0.008 min
 Response: 2534554
 Conc: 659.31 ng/ml

Instrument :
 ECD_O
 ClientSampled :
 AR1660CCC500



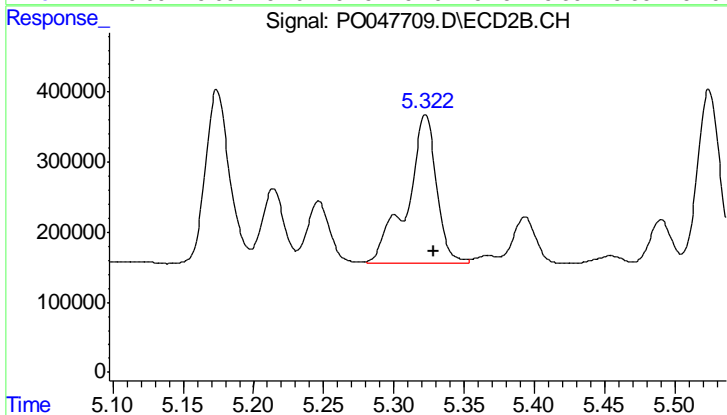
#19 AR-1242-4

R.T.: 5.174 min
 Delta R.T.: -0.006 min
 Response: 2900090
 Conc: 614.14 ng/ml



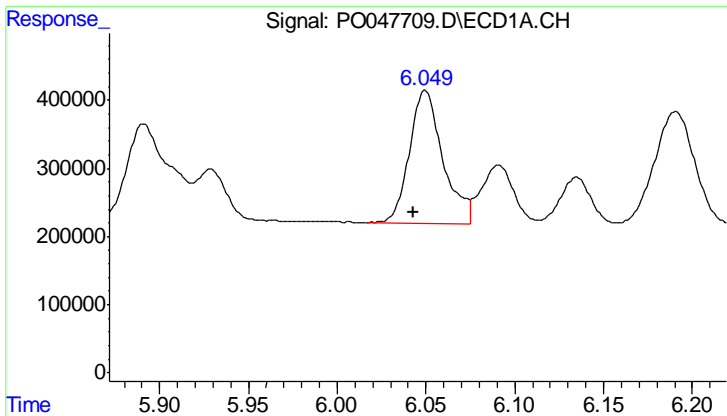
#20 AR-1242-5

R.T.: 6.191 min
 Delta R.T.: 0.008 min
 Response: 2663413
 Conc: 622.21 ng/ml



#20 AR-1242-5

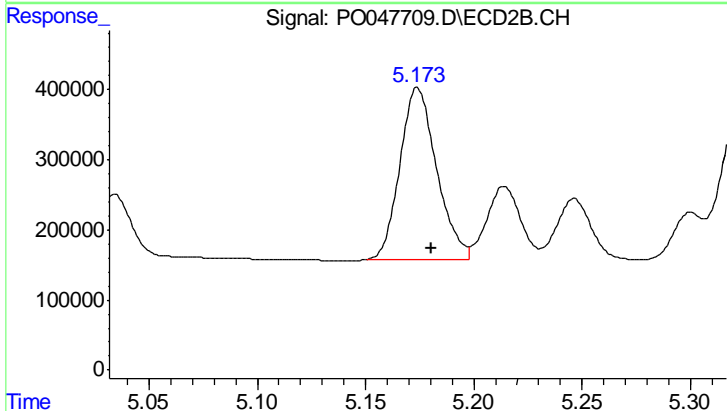
R.T.: 5.322 min
 Delta R.T.: -0.006 min
 Response: 3083430
 Conc: 796.40 ng/ml



#21 AR-1248-1

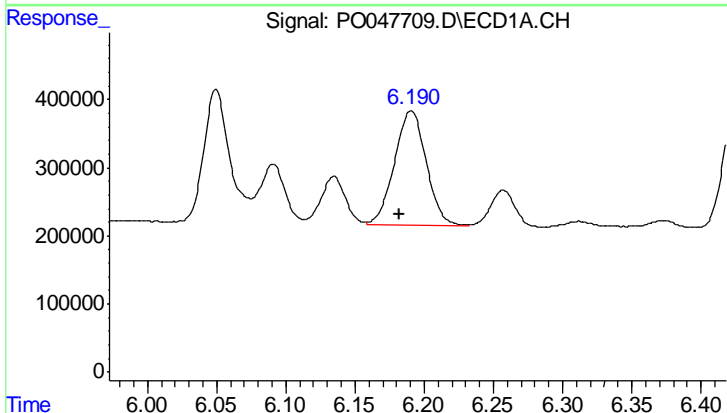
R.T.: 6.050 min
 Delta R.T.: 0.007 min
 Response: 2534554
 Conc: 405.33 ng/ml

Instrument :
 ECD_O
 ClientSampled :
 AR1660CCC500



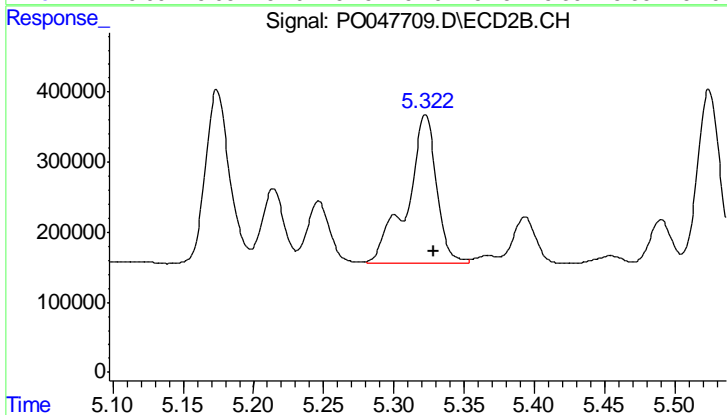
#21 AR-1248-1

R.T.: 5.174 min
 Delta R.T.: -0.006 min
 Response: 2900090
 Conc: 388.74 ng/ml



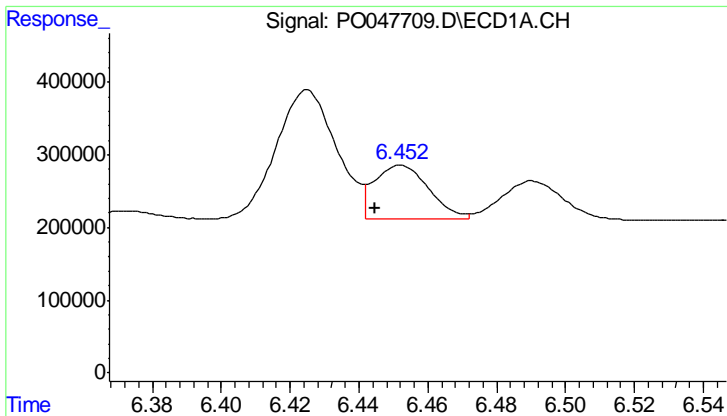
#22 AR-1248-2

R.T.: 6.191 min
 Delta R.T.: 0.008 min
 Response: 2663413
 Conc: 488.92 ng/ml



#22 AR-1248-2

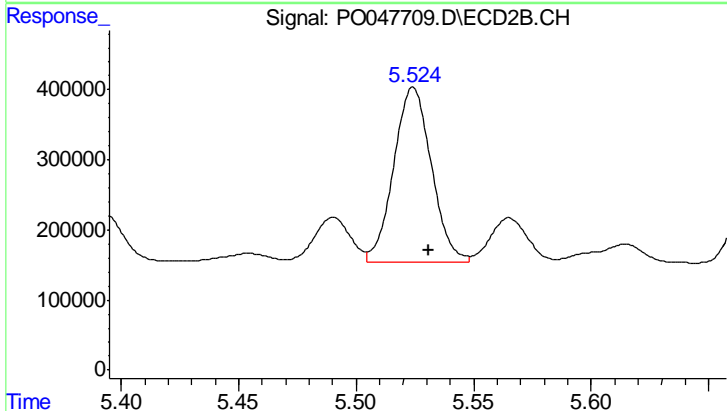
R.T.: 5.322 min
 Delta R.T.: -0.006 min
 Response: 3083430
 Conc: 576.35 ng/ml



#23 AR-1248-3

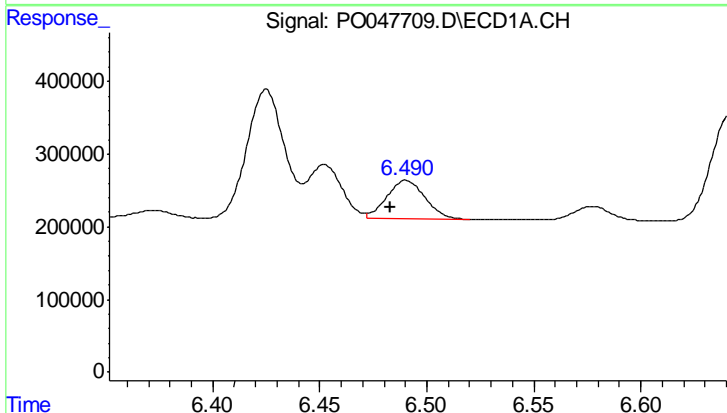
R.T.: 6.452 min
 Delta R.T.: 0.007 min
 Response: 814068
 Conc: 115.68 ng/ml

Instrument :
 ECD_O
 ClientSampled :
 AR1660CCC500



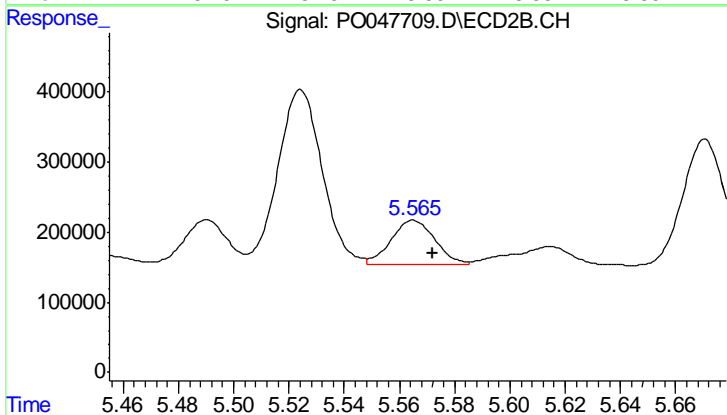
#23 AR-1248-3

R.T.: 5.524 min
 Delta R.T.: -0.007 min
 Response: 2791296
 Conc: 280.52 ng/ml



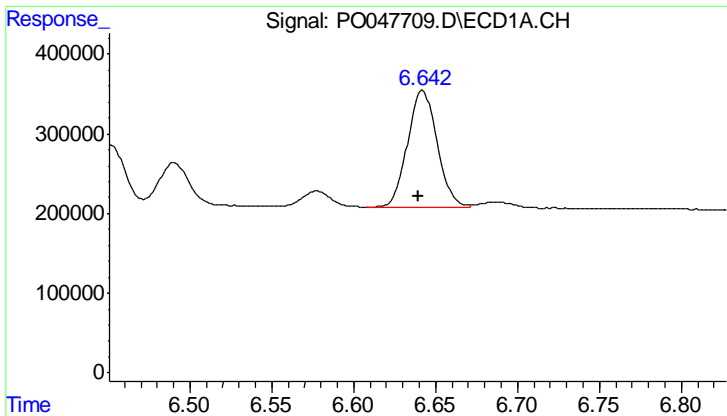
#24 AR-1248-4

R.T.: 6.490 min
 Delta R.T.: 0.008 min
 Response: 657918
 Conc: 98.00 ng/ml



#24 AR-1248-4

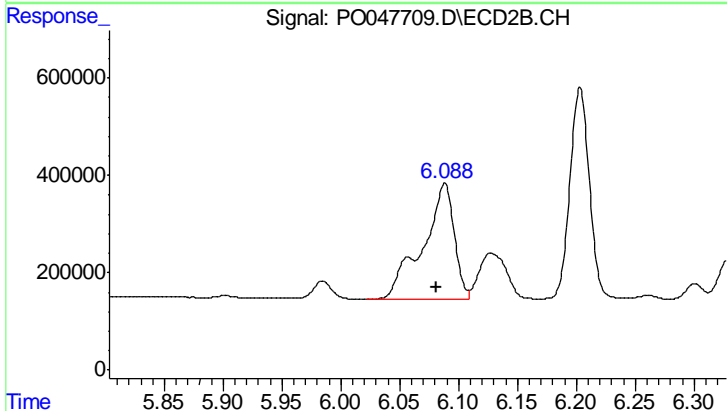
R.T.: 5.565 min
 Delta R.T.: -0.007 min
 Response: 706872
 Conc: 100.86 ng/ml



#25 AR-1248-5

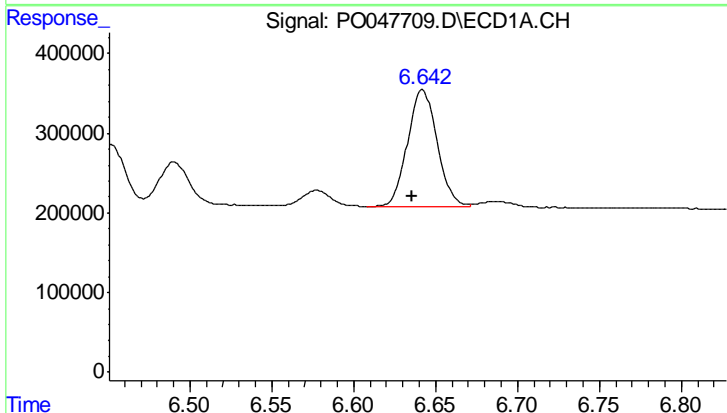
R.T.: 6.642 min
 Delta R.T.: 0.002 min
 Response: 1862136
 Conc: 263.10 ng/ml

Instrument :
 ECD_O
 ClientSampled :
 AR1660CCC500



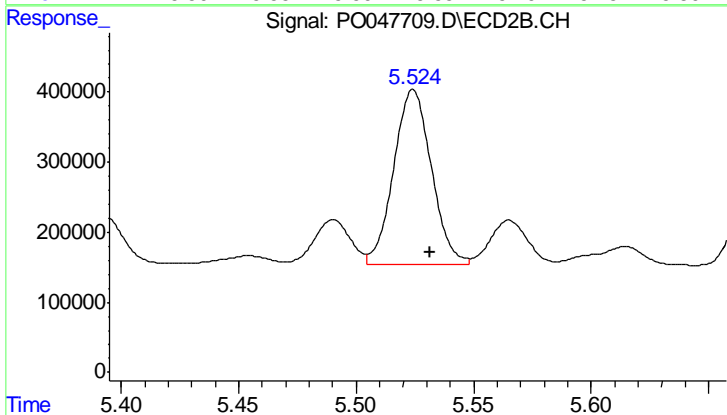
#25 AR-1248-5

R.T.: 6.088 min
 Delta R.T.: 0.007 min
 Response: 4444421
 Conc: 932.57 ng/ml



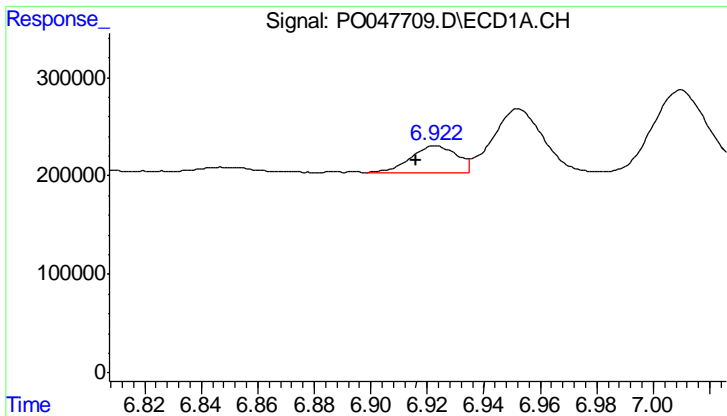
#26 AR-1254-1

R.T.: 6.642 min
 Delta R.T.: 0.006 min
 Response: 1862136
 Conc: 152.27 ng/ml



#26 AR-1254-1

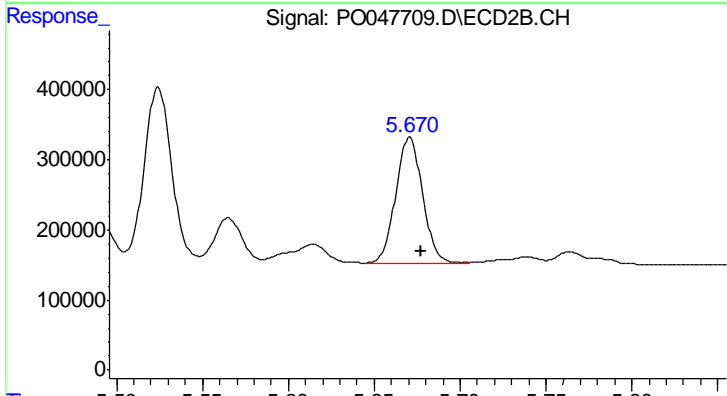
R.T.: 5.524 min
 Delta R.T.: -0.007 min
 Response: 2791296
 Conc: 226.84 ng/ml



#27 AR-1254-2

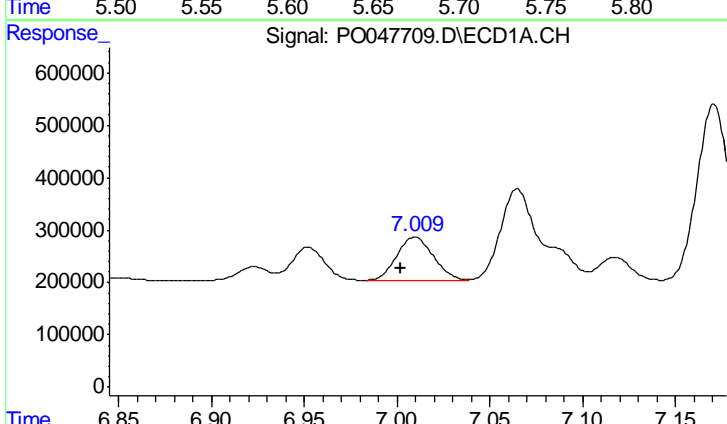
R.T.: 6.923 min
 Delta R.T.: 0.007 min
 Response: 301339
 Conc: 40.41 ng/ml

Instrument :
 ECD_O
 ClientSampleId :
 AR1660CCC500



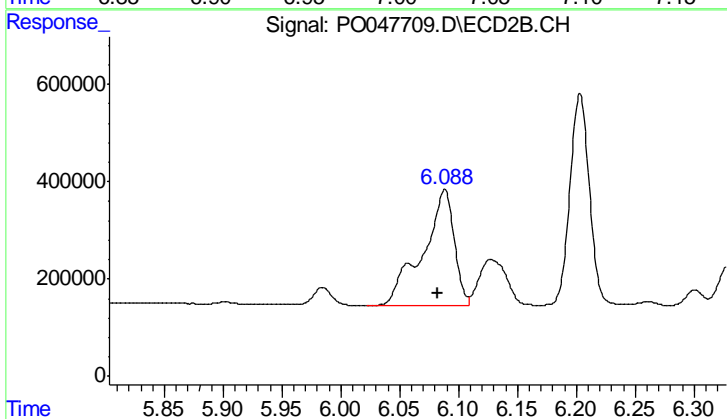
#27 AR-1254-2

R.T.: 5.671 min
 Delta R.T.: -0.006 min
 Response: 1941901
 Conc: 186.55 ng/ml



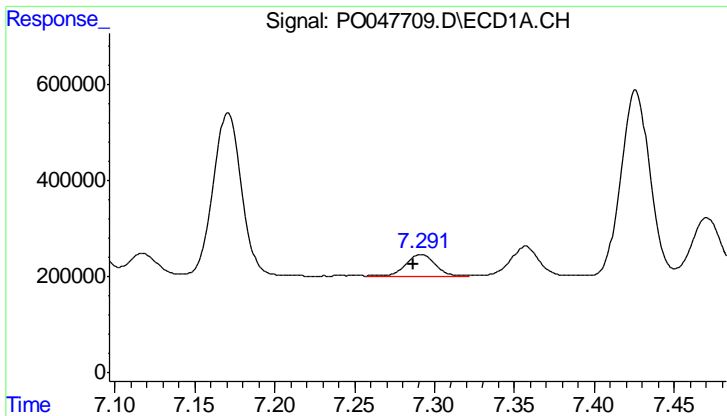
#28 AR-1254-3

R.T.: 7.010 min
 Delta R.T.: 0.008 min
 Response: 1137436
 Conc: 87.22 ng/ml



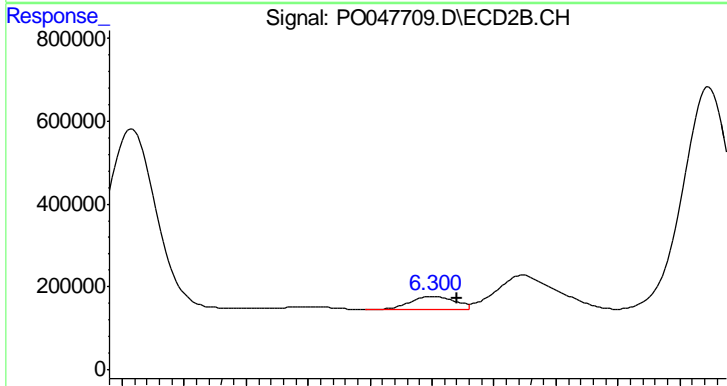
#28 AR-1254-3

R.T.: 6.088 min
 Delta R.T.: 0.006 min
 Response: 4444421
 Conc: 256.08 ng/ml

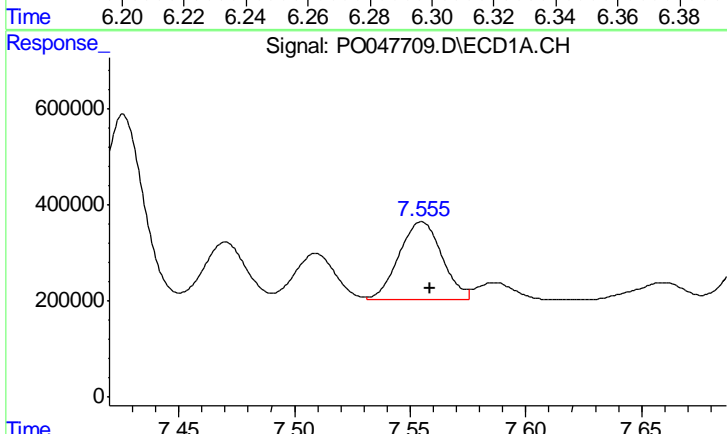


#29 AR-1254-4
 R.T.: 7.292 min
 Delta R.T.: 0.005 min
 Response: 557188
 Conc: 57.17 ng/ml

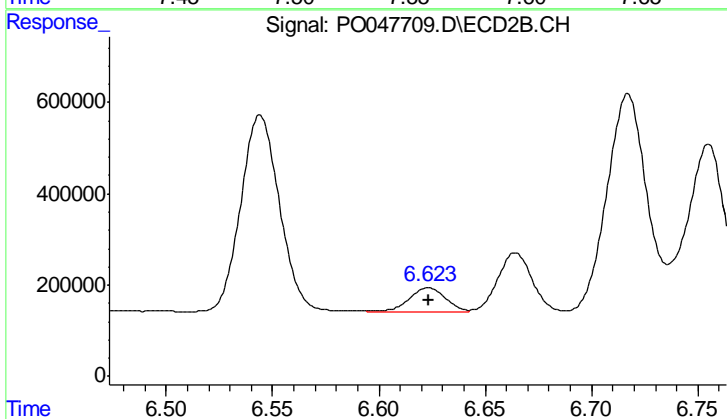
Instrument :
 ECD_O
 ClientSampleId :
 AR1660CCC500



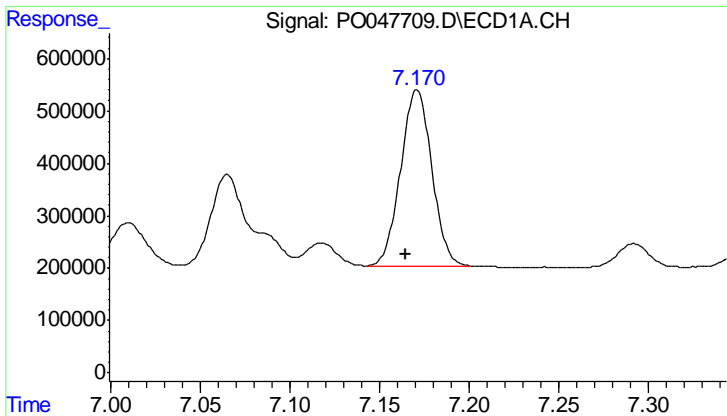
#29 AR-1254-4
 R.T.: 6.301 min
 Delta R.T.: -0.007 min
 Response: 320896
 Conc: 29.62 ng/ml



#30 AR-1254-5
 R.T.: 7.555 min
 Delta R.T.: -0.004 min
 Response: 2107717
 Conc: 285.30 ng/ml



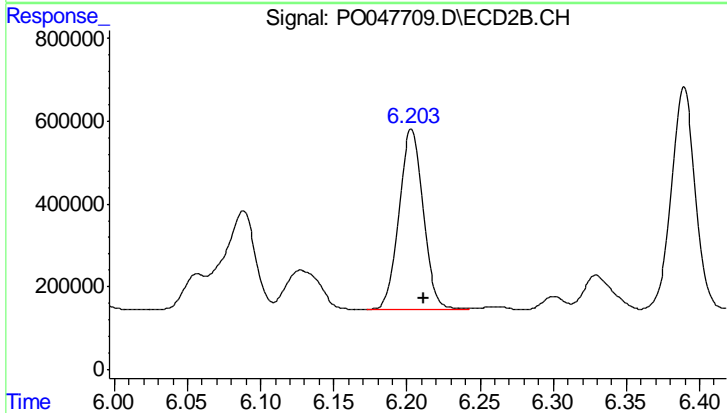
#30 AR-1254-5
 R.T.: 6.623 min
 Delta R.T.: 0.000 min
 Response: 618018
 Conc: 80.81 ng/ml



#31 AR-1260-1

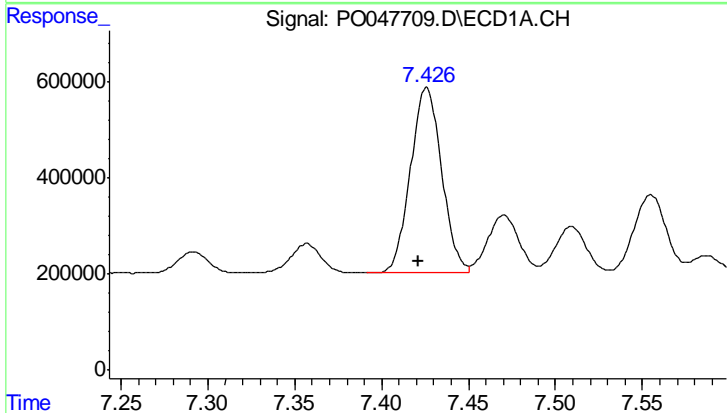
R.T.: 7.171 min
 Delta R.T.: 0.006 min
 Response: 4056303
 Conc: 432.58 ng/ml

Instrument :
 ECD_O
 ClientSampleId :
 AR1660CCC500



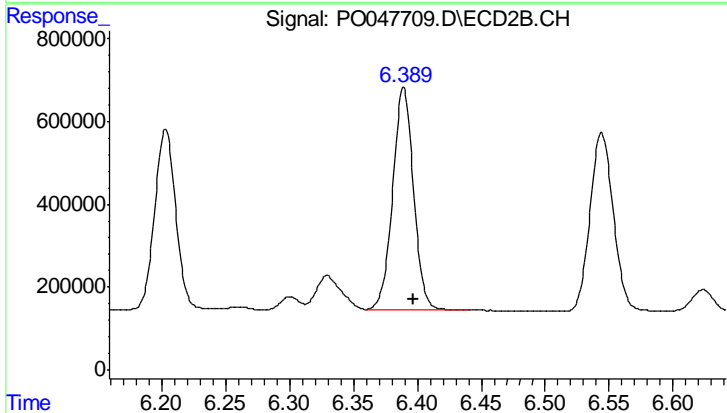
#31 AR-1260-1

R.T.: 6.203 min
 Delta R.T.: -0.008 min
 Response: 5015240
 Conc: 453.87 ng/ml



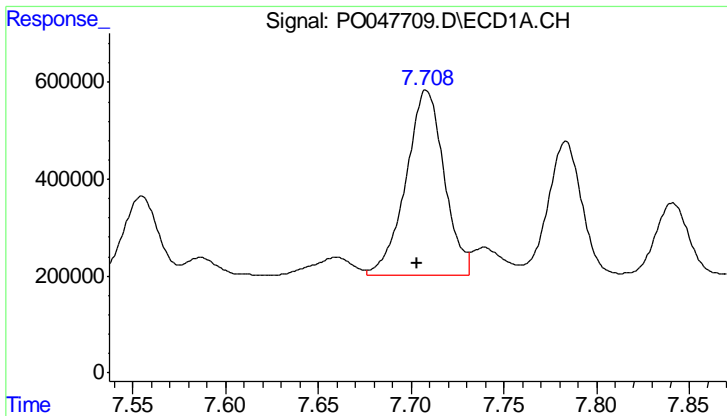
#32 AR-1260-2

R.T.: 7.426 min
 Delta R.T.: 0.005 min
 Response: 4831652
 Conc: 433.29 ng/ml



#32 AR-1260-2

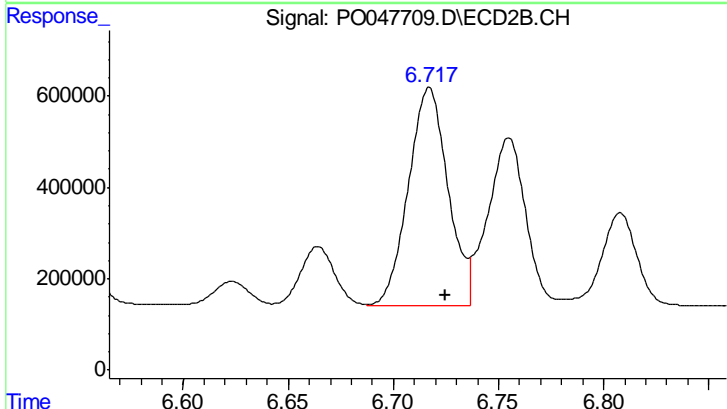
R.T.: 6.389 min
 Delta R.T.: -0.008 min
 Response: 6048135
 Conc: 451.08 ng/ml



#33 AR-1260-3

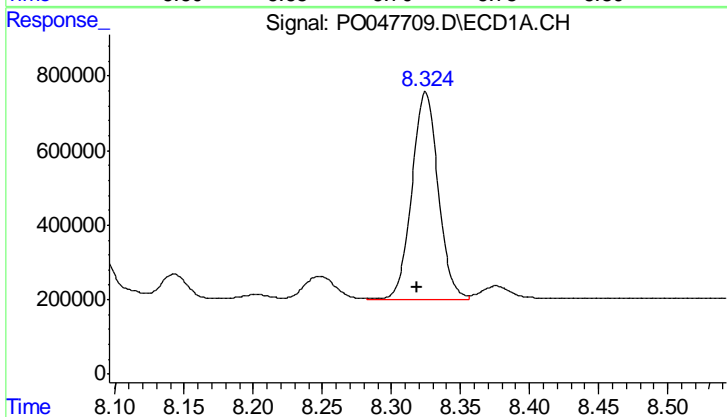
R.T.: 7.708 min
 Delta R.T.: 0.005 min
 Response: 5466539
 Conc: 424.88 ng/ml

Instrument :
 ECD_O
 ClientSampleId :
 AR1660CCC500



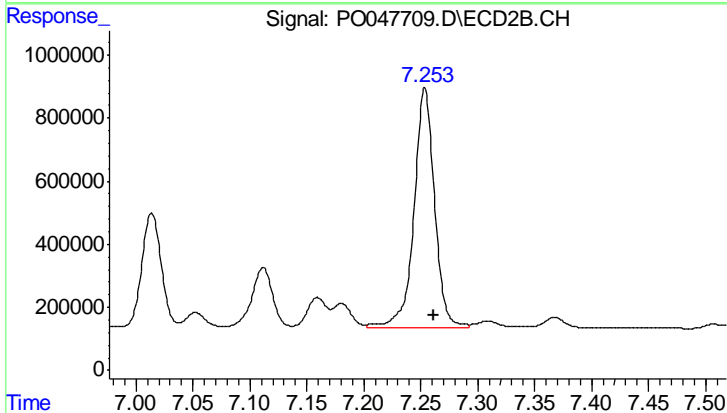
#33 AR-1260-3

R.T.: 6.717 min
 Delta R.T.: -0.008 min
 Response: 6253638
 Conc: 430.16 ng/ml



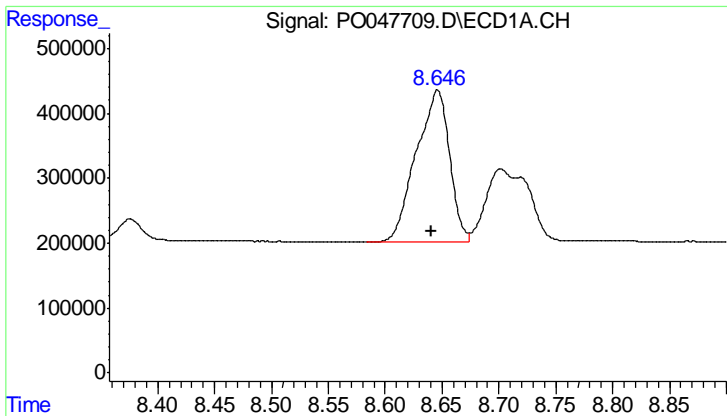
#34 AR-1260-4

R.T.: 8.325 min
 Delta R.T.: 0.006 min
 Response: 7345997
 Conc: 412.98 ng/ml



#34 AR-1260-4

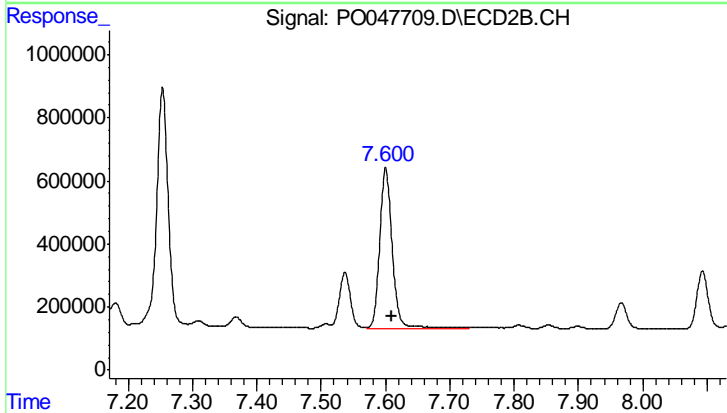
R.T.: 7.254 min
 Delta R.T.: -0.008 min
 Response: 9555871
 Conc: 434.28 ng/ml



#35 AR-1260-5

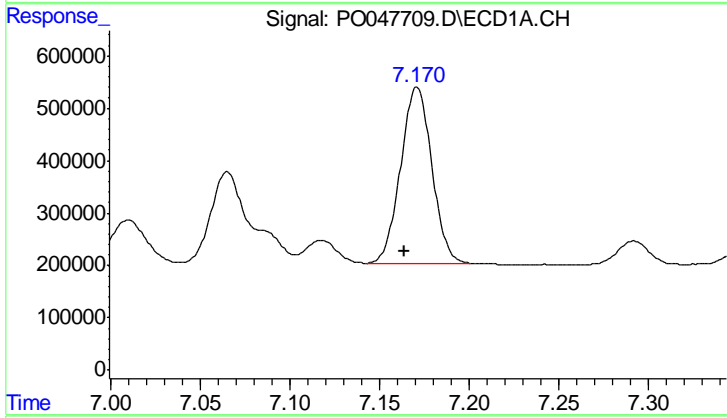
R.T.: 8.646 min
 Delta R.T.: 0.006 min
 Response: 4807823
 Conc: 421.02 ng/ml

Instrument :
 ECD_O
 ClientSampled :
 AR1660CCC500



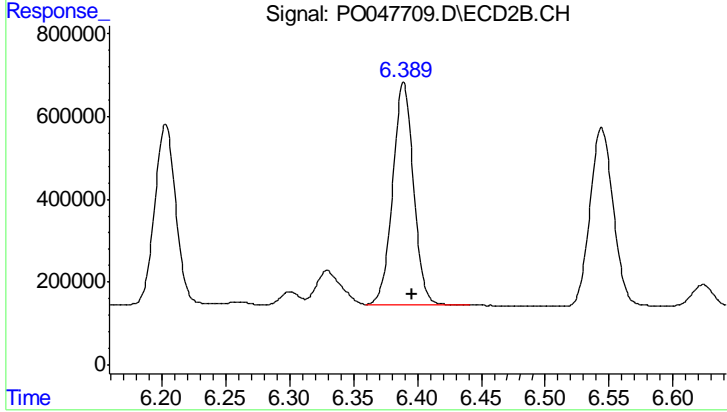
#35 AR-1260-5

R.T.: 7.600 min
 Delta R.T.: -0.009 min
 Response: 6879776
 Conc: 441.02 ng/ml



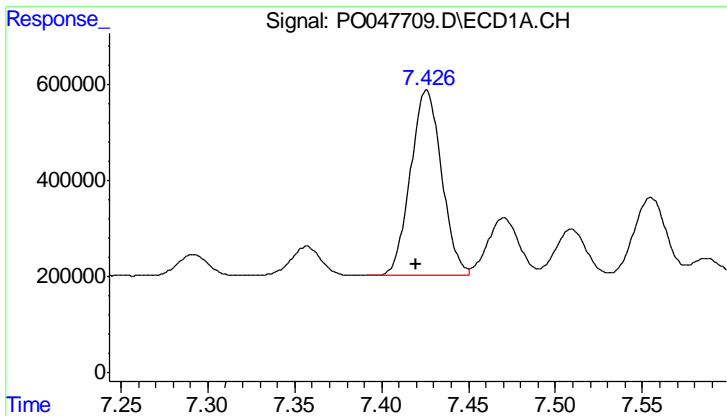
#36 AR-1262-1

R.T.: 7.171 min
 Delta R.T.: 0.007 min
 Response: 4056303
 Conc: 489.63 ng/ml



#36 AR-1262-1

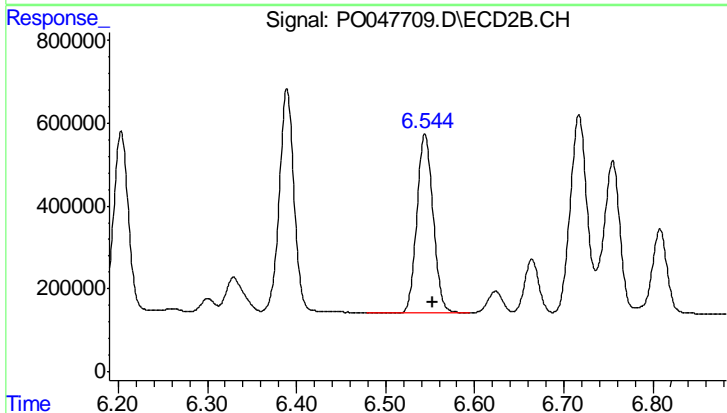
R.T.: 6.389 min
 Delta R.T.: -0.007 min
 Response: 6048135
 Conc: 533.44 ng/ml



#37 AR-1262-2

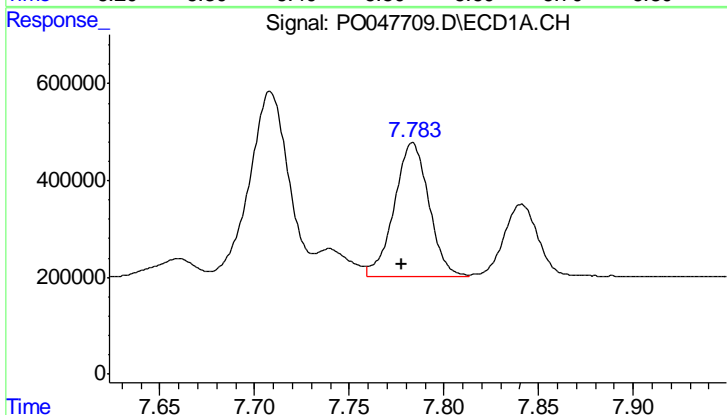
R.T.: 7.426 min
 Delta R.T.: 0.006 min
 Response: 4831652
 Conc: 498.54 ng/ml

Instrument :
 ECD_O
 ClientSampleId :
 AR1660CCC500



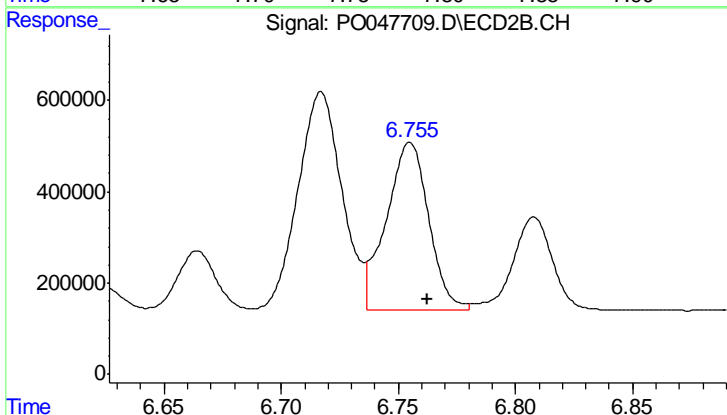
#37 AR-1262-2

R.T.: 6.544 min
 Delta R.T.: -0.009 min
 Response: 5444442
 Conc: 482.47 ng/ml



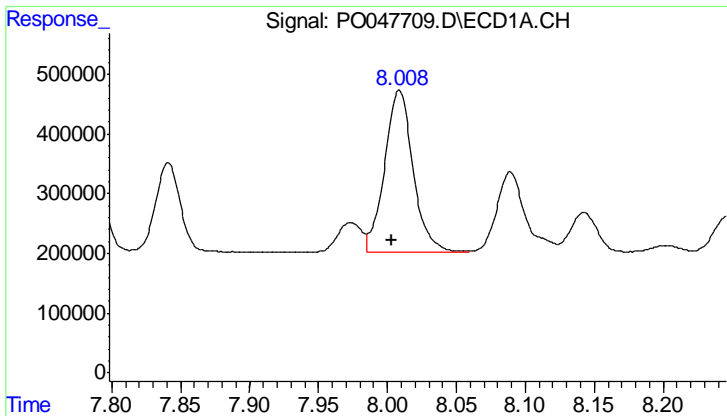
#38 AR-1262-3

R.T.: 7.783 min
 Delta R.T.: 0.006 min
 Response: 3487942
 Conc: 284.21 ng/ml



#38 AR-1262-3

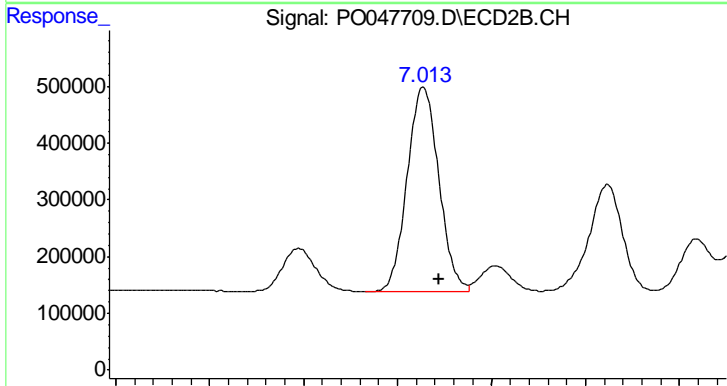
R.T.: 6.755 min
 Delta R.T.: -0.008 min
 Response: 4654911
 Conc: 308.43 ng/ml



#39 AR-1262-4

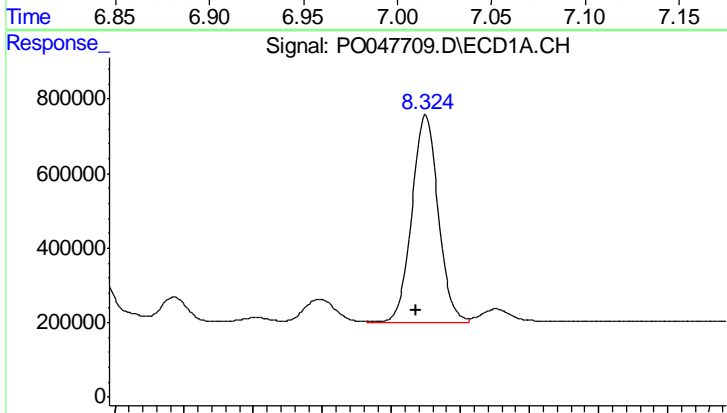
R.T.: 8.009 min
 Delta R.T.: 0.006 min
 Response: 3905465
 Conc: 331.65 ng/ml

Instrument :
 ECD_O
 ClientSampled :
 AR1660CCC500



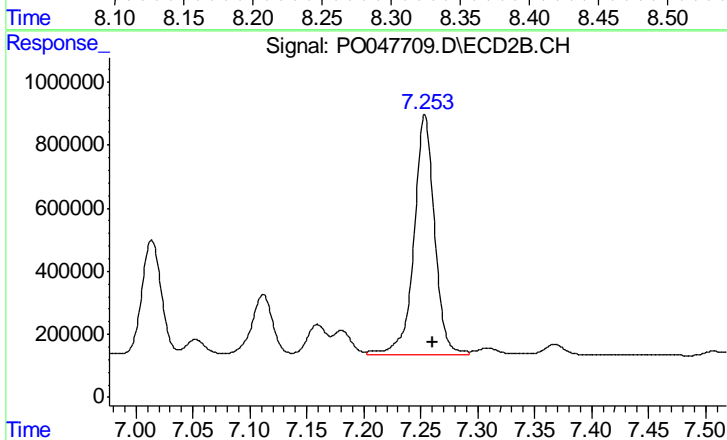
#39 AR-1262-4

R.T.: 7.014 min
 Delta R.T.: -0.008 min
 Response: 4230949
 Conc: 321.30 ng/ml



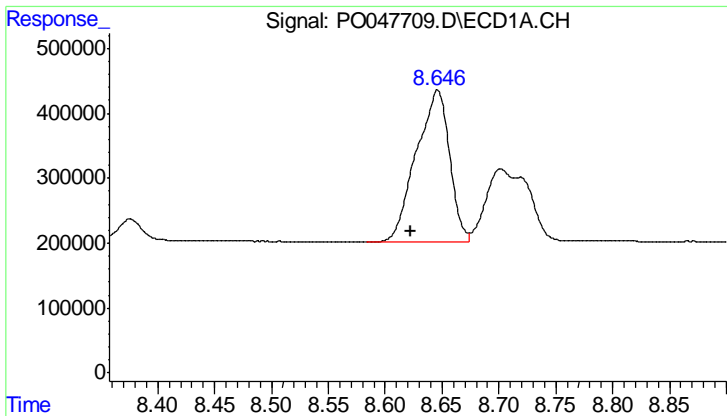
#40 AR-1262-5

R.T.: 8.325 min
 Delta R.T.: 0.007 min
 Response: 7345997
 Conc: 341.90 ng/ml



#40 AR-1262-5

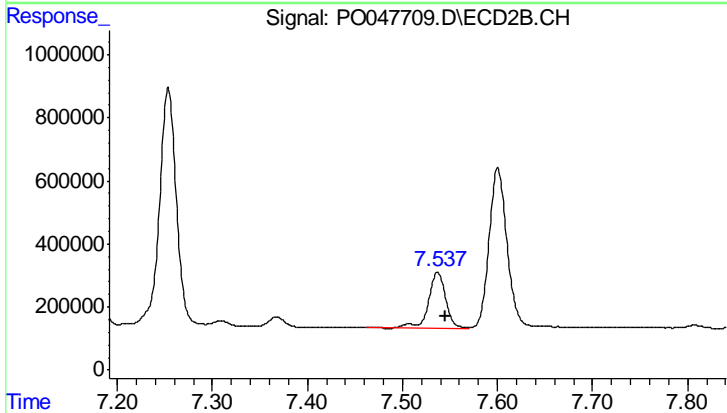
R.T.: 7.254 min
 Delta R.T.: -0.007 min
 Response: 9555871
 Conc: 369.97 ng/ml



#41 AR-1268-1

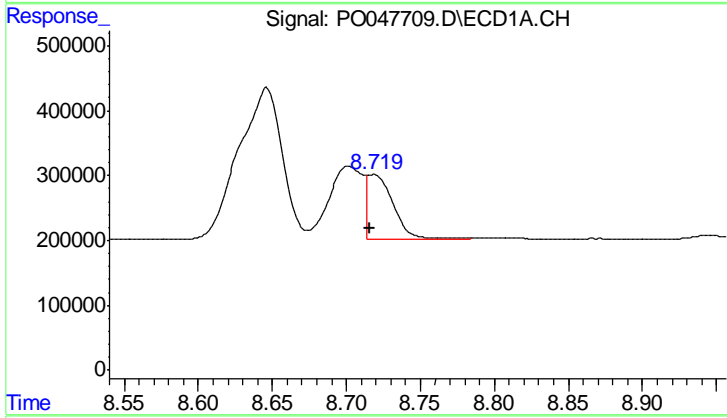
R.T.: 8.646 min
 Delta R.T.: 0.023 min
 Response: 4807823
 Conc: 207.15 ng/ml

Instrument :
 ECD_O
 ClientSampled :
 AR1660CCC500



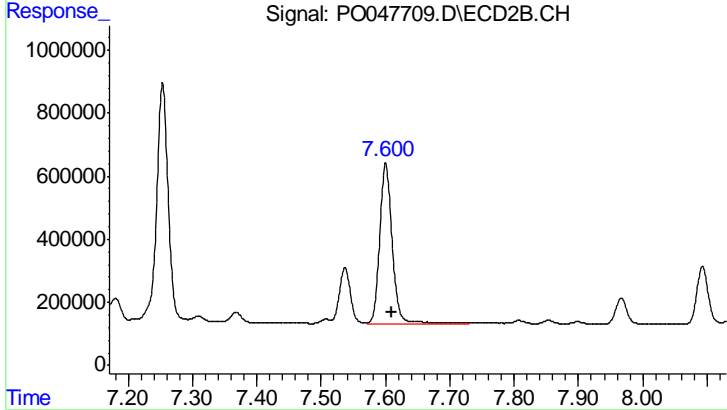
#41 AR-1268-1

R.T.: 7.537 min
 Delta R.T.: -0.008 min
 Response: 2200282
 Conc: 84.63 ng/ml



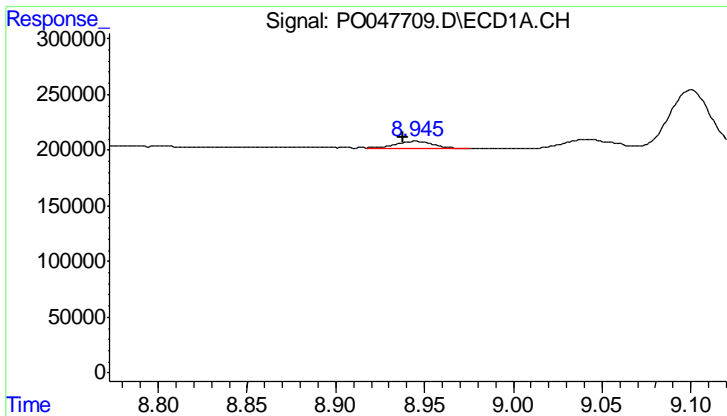
#42 AR-1268-2

R.T.: 8.718 min
 Delta R.T.: 0.002 min
 Response: 1239269
 Conc: 57.84 ng/ml



#42 AR-1268-2

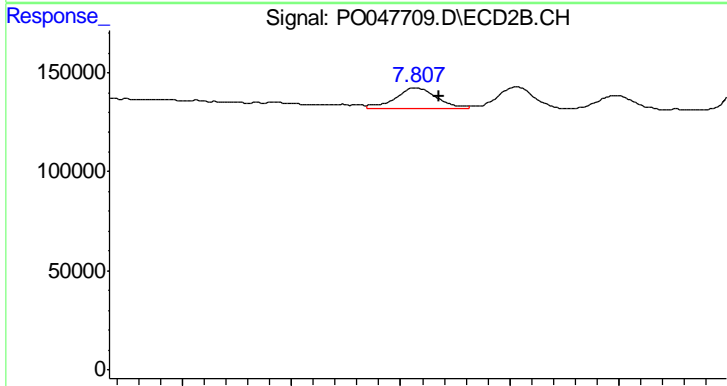
R.T.: 7.600 min
 Delta R.T.: -0.009 min
 Response: 6879776
 Conc: 276.15 ng/ml



#43 AR-1268-3

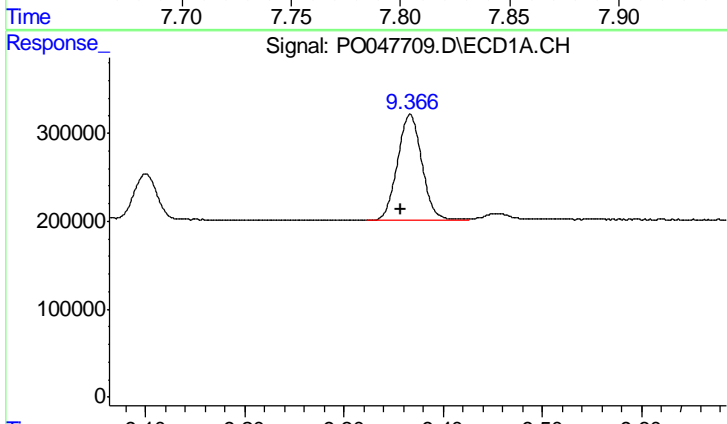
R.T.: 8.945 min
 Delta R.T.: 0.007 min
 Response: 105799
 Conc: 5.86 ng/ml

Instrument :
 ECD_O
 ClientSampleId :
 AR1660CCC500



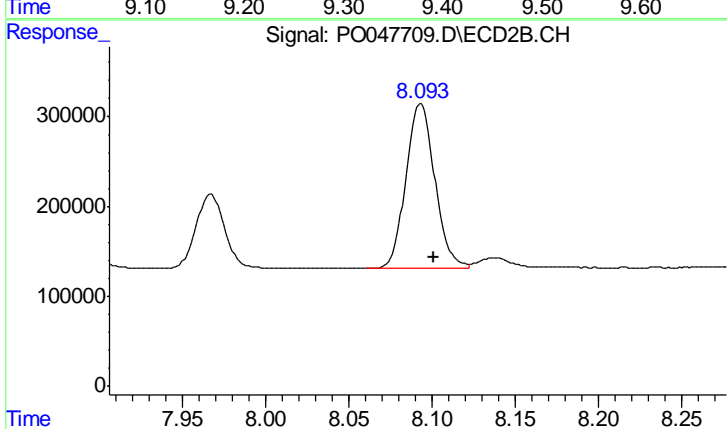
#43 AR-1268-3

R.T.: 7.807 min
 Delta R.T.: -0.010 min
 Response: 138100
 Conc: 7.00 ng/ml



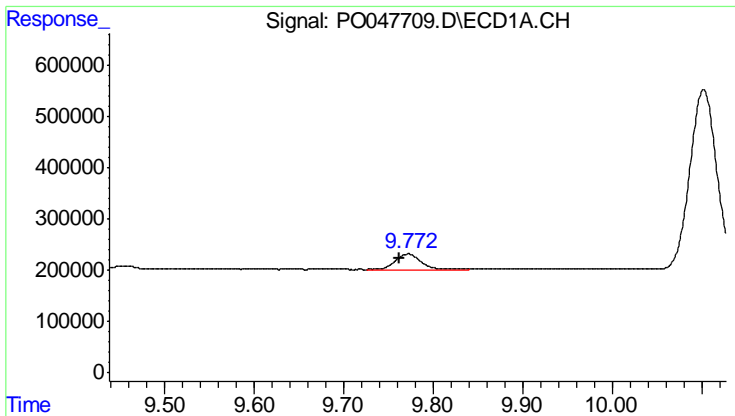
#44 AR-1268-4

R.T.: 9.367 min
 Delta R.T.: 0.009 min
 Response: 2085490
 Conc: 261.54 ng/ml



#44 AR-1268-4

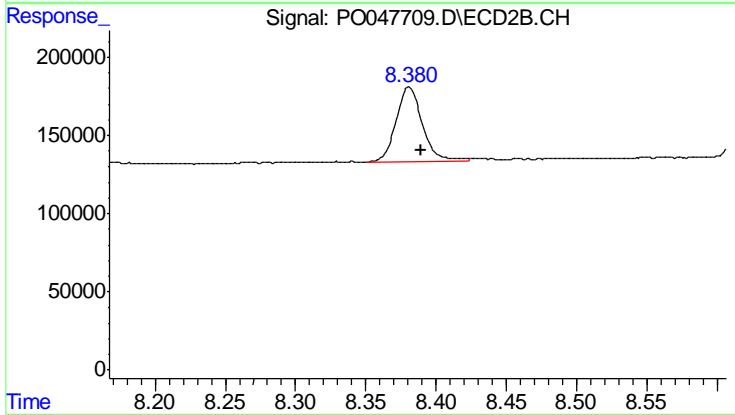
R.T.: 8.093 min
 Delta R.T.: -0.008 min
 Response: 2220034
 Conc: 264.65 ng/ml



#45 AR-1268-5

R.T.: 9.772 min
Delta R.T.: 0.010 min
Response: 600322
Conc: 11.02 ng/ml

Instrument :
ECD_O
ClientSampleId :
AR1660CCC500



#45 AR-1268-5

R.T.: 8.381 min
Delta R.T.: -0.009 min
Response: 627004
Conc: 11.48 ng/ml