

Data Path : Z:\pestpcbsrv\HPCHEM1\ECD\_0\Data\P0080619\  
 Data File : P0058947.D  
 Signal(s) : Signal #1: ECD1A.CH Signal #2: ECD2B.CH  
 Acq On : 06 Aug 2019 19:20  
 Operator : SM/AJ  
 Sample : K4154-07  
 Misc :  
 ALS Vial : 25 Sample Multiplier: 1

Instrument :  
 ECD\_0  
 ClientSampled :  
 PS-7

Integration File signal 1: autoint1.e  
 Integration File signal 2: autoint2.e  
 Quant Time: Aug 07 02:10:48 2019  
 Quant Method : Z:\pestpcbsrv\HPCHEM1\ECD\_0\methods\P0072819.M  
 Quant Title : GC EXTRACTABLES  
 QLast Update : Sat Jul 27 06:49:05 2019  
 Response via : Initial Calibration  
 Integrator: ChemStation 6890 Scale Mode: Small noise peaks clipped

Volume Inj. : 2 µl  
 Signal #1 Phase : ZB-MR1 Signal #2 Phase: ZB-MR2  
 Signal #1 Info : 30Mx0.32mmx 0.50µ Signal #2 Info : 30M x 0.32mm x 0.25µm

Compound	RT#1	RT#2	Resp#1	Resp#2	ng/ml	ng/ml
-----						
System Monitoring Compounds						
1) SA Tetrachlo...	4.156	3.516	579054	540587	13.721	13.532
2) SA Decachlor...	9.664	8.397	409229	260744	7.557	6.606
Target Compounds						
3) L1 AR-1016-1	5.357	4.644	40527	52677	21.626	36.130 #
4) L1 AR-1016-2	5.357	4.644	40527	52677	14.729	24.540 #
5) L1 AR-1016-3	5.392	4.765	3107	26900	1.830	23.685 #
6) L1 AR-1016-4	5.568	4.765	-21018	26900	N.D.	28.517 #
7) L1 AR-1016-5	5.779	4.960	8904	20208	6.216	16.410 #
8) L2 AR-1221-1	4.457	0.000	17184	0	37.829	N.D. #
9) L2 AR-1221-2	4.457	3.808	17184	47961	49.842	160.692 #
10) L2 AR-1221-3	4.539	3.911	47616	59998	43.422	62.720 #
11) L3 AR-1232-1	4.539	3.911	47616	59998	52.742	76.377 #
12) L3 AR-1232-2	5.074	4.644	6600	52677	13.418	62.304 #
13) L3 AR-1232-3	5.357	4.765	40527	26900	37.849	61.167 #
15) L3 AR-1232-5	5.606	4.960	4283	20208	10.497	45.902 #
16) L4 AR-1242-1	5.357	4.644	40527	52677	31.648	51.890 #
17) L4 AR-1242-2	5.357	4.644	40527	52677	21.424	34.893 #
18) L4 AR-1242-3	5.392	4.765	3107	26900	2.649	33.031 #
20) L4 AR-1242-5	6.246	5.370	48641	86993	41.411	81.099 #
21) L5 AR-1248-1	5.357	4.644	40527	52677	40.086	65.876 #
22) L5 AR-1248-2	5.606	4.765	4283	26900	2.963	24.278 #
23) L5 AR-1248-3	5.779	0.000	8904	0	5.420	N.D. #
24) L5 AR-1248-4	6.246	4.960	48641	20208	24.017	14.466 #
25) L5 AR-1248-5	6.246	5.370	48641	86993	25.198	62.799 #
26) L6 AR-1254-1	6.157	5.370	89316	86993	37.825	33.581
27) L6 AR-1254-2	6.373	5.558	60327	267245	15.653	116.730 #
28) L6 AR-1254-3	6.737	0.000	47139	0	11.640	N.D. #
29) L6 AR-1254-4	7.083	0.000	49883	0	13.854	N.D. #
30) L6 AR-1254-5	0.000	6.534	0	12697	N.D.	3.681 #
31) L7 AR-1260-1	6.884	0.000	47710	0	16.571	N.D. #
32) L7 AR-1260-2	7.188	6.249	5307	32110	1.276	10.600 #
35) L7 AR-1260-5	8.024	0.000	45318	0	6.162	N.D. #
36) L8 AR-1262-1	0.000	6.568	0	9667	N.D.	2.707 #
37) L8 AR-1262-2	8.024	0.000	45318	0	5.694	N.D. #
38) L8 AR-1262-3	8.373	0.000	48150	0	9.472	N.D. #
39) L8 AR-1262-4	8.373	0.000	48150	0	12.706	N.D. #
41) L9 AR-1268-1	8.373	0.000	48150	0	4.311	N.D. #
42) L9 AR-1268-2	8.373	0.000	48150	0	5.126	N.D. #
43) L9 AR-1268-3	8.596	0.000	190305	0	23.042	N.D. #
45) L9 AR-1268-5	9.377	0.000	32259	0	1.503	N.D. #

(f)=RT Delta > 1/2 Window (#)=Amounts differ by > 25% (m)=manual int.

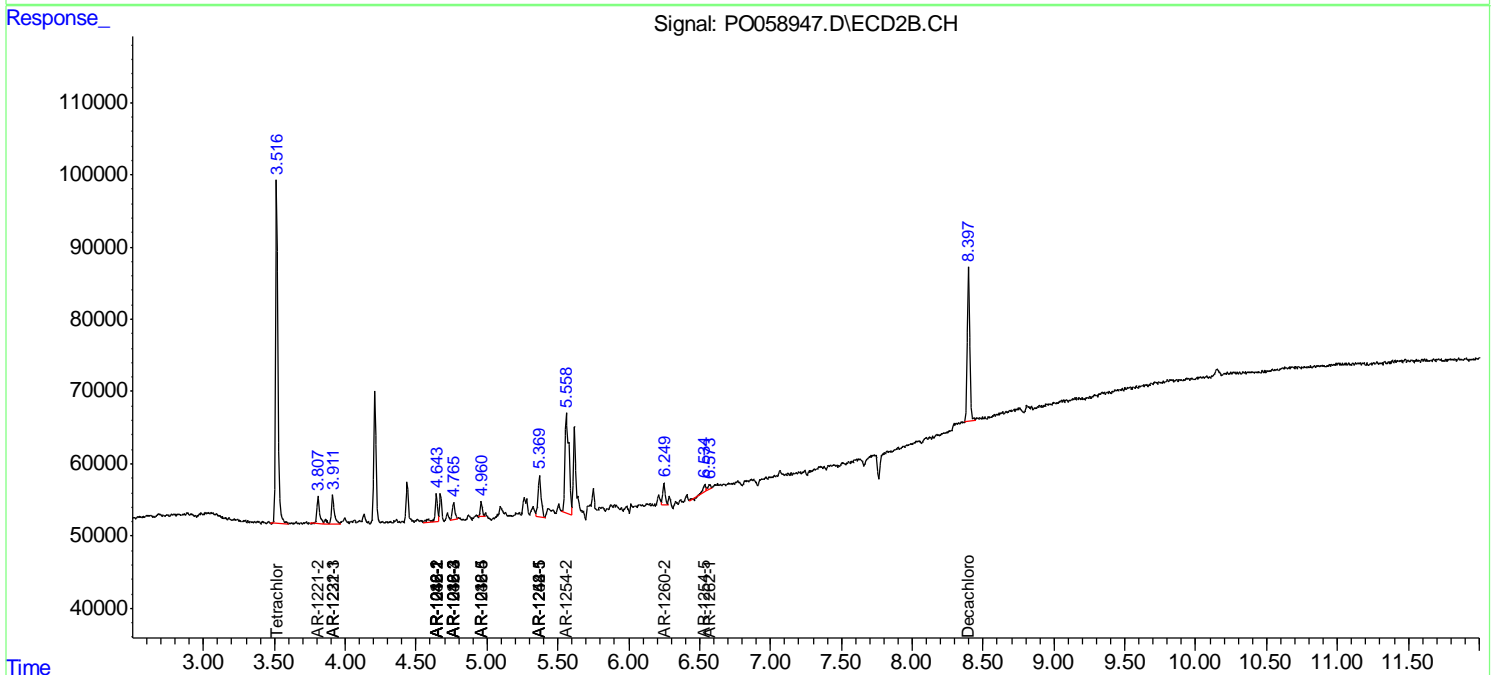
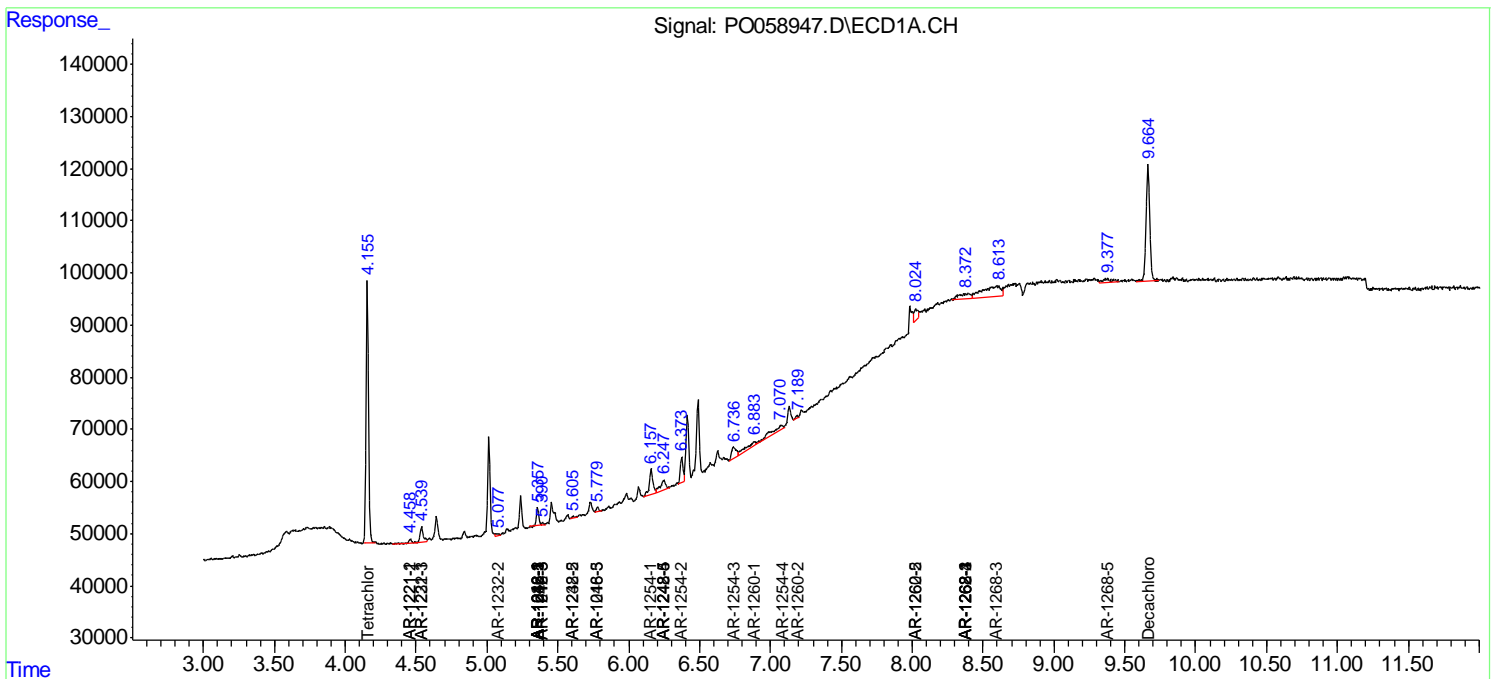
Instrument :  
ECD\_O  
ClientSampleId :  
PS-7

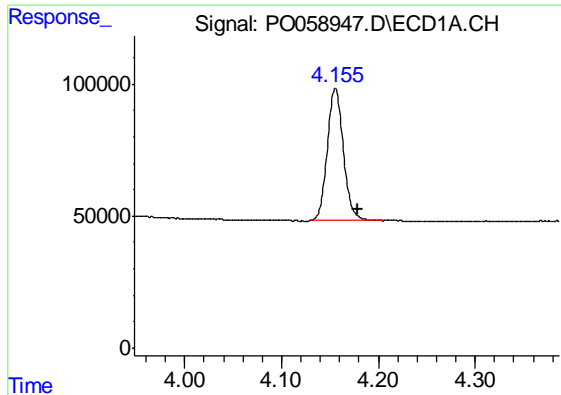
Data Path : Z:\pestpcbsrv\HPCHEM1\ECD\_O\Data\PO080619\  
 Data File : PO058947.D  
 Signal(s) : Signal #1: ECD1A.CH Signal #2: ECD2B.CH  
 Acq On : 06 Aug 2019 19:20  
 Operator : SM/AJ  
 Sample : K4154-07  
 Misc :  
 ALS Vial : 25 Sample Multiplier: 1

Instrument :  
 ECD\_O  
 ClientSampled :  
 PS-7

Integration File signal 1: autoint1.e  
 Integration File signal 2: autoint2.e  
 Quant Time: Aug 07 02:10:48 2019  
 Quant Method : Z:\pestpcbsrv\HPCHEM1\ECD\_O\methods\PO072819.M  
 Quant Title : GC EXTRACTABLES  
 QLast Update : Sat Jul 27 06:49:05 2019  
 Response via : Initial Calibration  
 Integrator: ChemStation 6890 Scale Mode: Small noise peaks clipped

Volume Inj. : 2 µl  
 Signal #1 Phase : ZB-MR1 Signal #2 Phase: ZB-MR2  
 Signal #1 Info : 30Mx0.32mmx 0.50µ Signal #2 Info : 30M x 0.32mm x 0.25µm

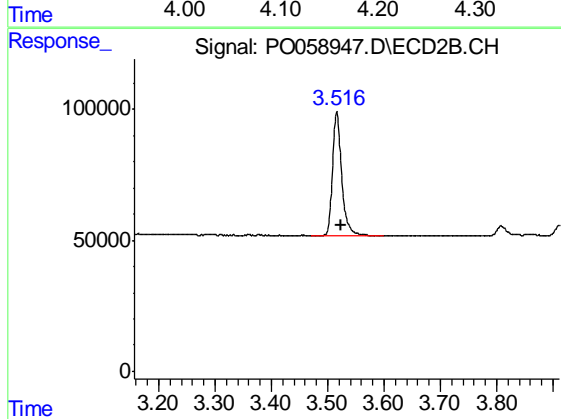




#1 Tetrachloro-m-xylene

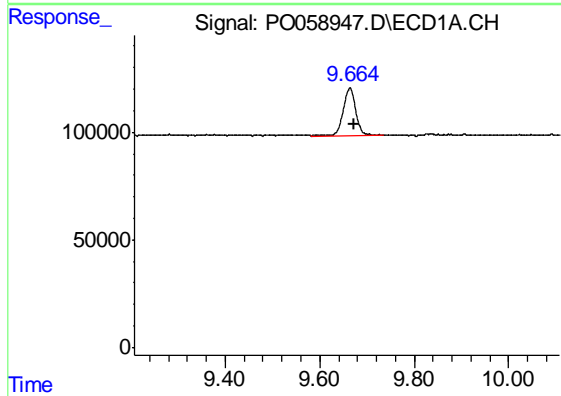
R.T.: 4.156 min  
 Delta R.T.: -0.023 min  
 Response: 579054  
 Conc: 13.72 ng/ml

Instrument :  
 ECD\_O  
 ClientSampled :  
 PS-7



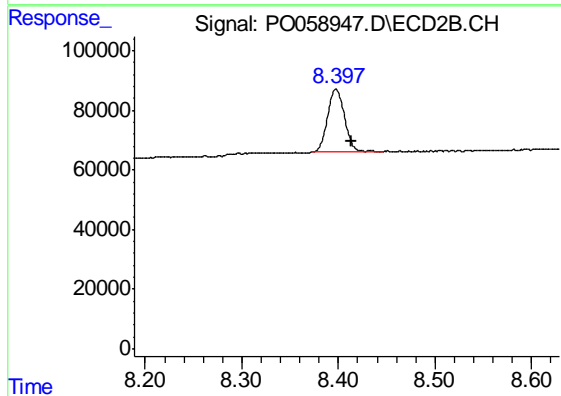
#1 Tetrachloro-m-xylene

R.T.: 3.516 min  
 Delta R.T.: -0.009 min  
 Response: 540587  
 Conc: 13.53 ng/ml



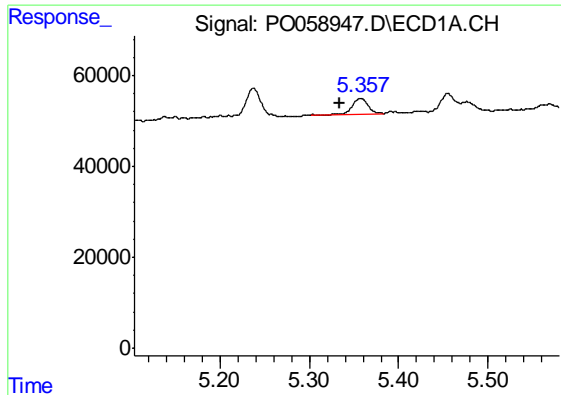
#2 Decachlorobiphenyl

R.T.: 9.664 min  
 Delta R.T.: -0.009 min  
 Response: 409229  
 Conc: 7.56 ng/ml



#2 Decachlorobiphenyl

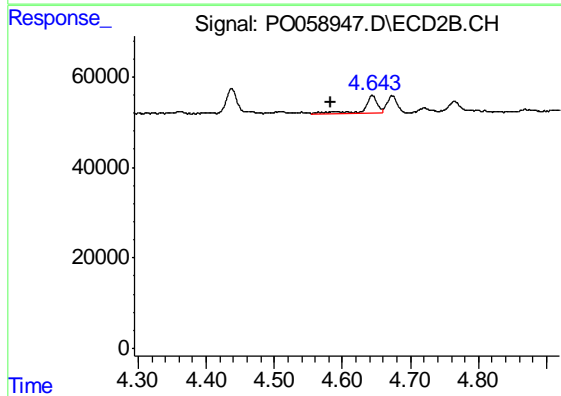
R.T.: 8.397 min  
 Delta R.T.: -0.017 min  
 Response: 260744  
 Conc: 6.61 ng/ml



#3 AR-1016-1

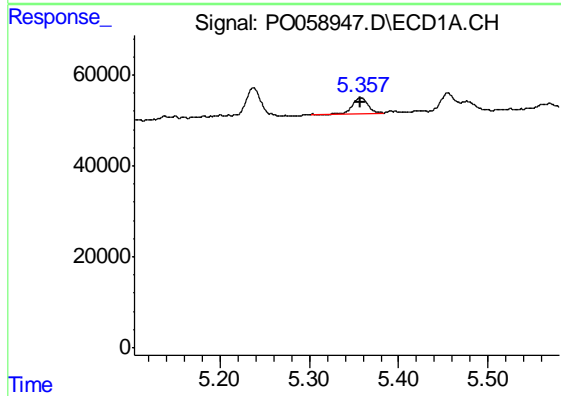
R.T.: 5.357 min  
 Delta R.T.: 0.023 min  
 Response: 40527  
 Conc: 21.63 ng/ml

Instrument :  
 ECD\_O  
 ClientSampleId :  
 PS-7



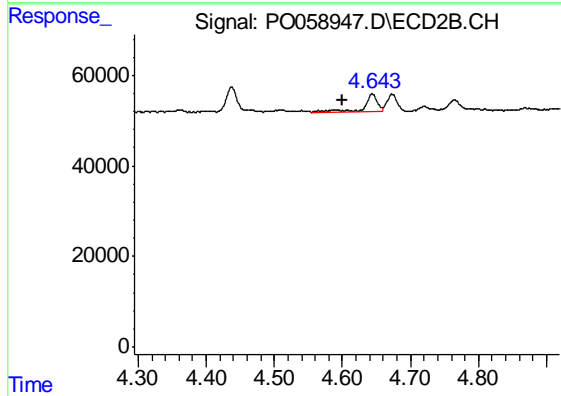
#3 AR-1016-1

R.T.: 4.644 min  
 Delta R.T.: 0.061 min  
 Response: 52677  
 Conc: 36.13 ng/ml



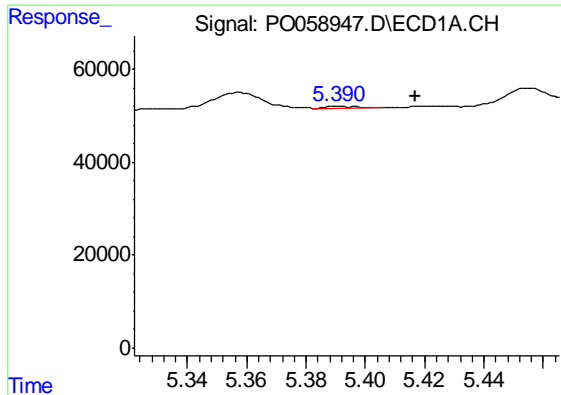
#4 AR-1016-2

R.T.: 5.357 min  
 Delta R.T.: 0.000 min  
 Response: 40527  
 Conc: 14.73 ng/ml



#4 AR-1016-2

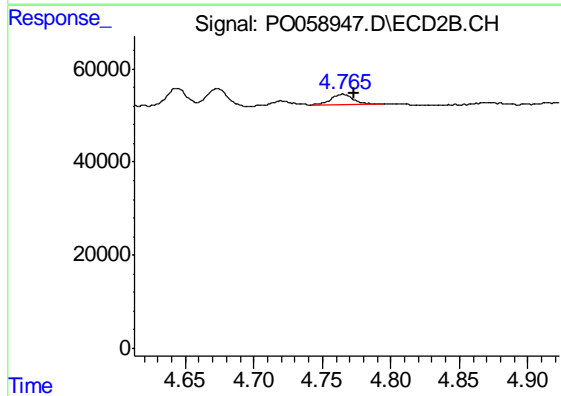
R.T.: 4.644 min  
 Delta R.T.: 0.043 min  
 Response: 52677  
 Conc: 24.54 ng/ml



#5 AR-1016-3

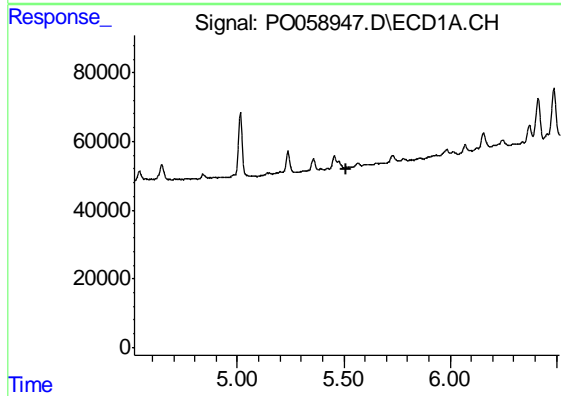
R.T.: 5.392 min  
 Delta R.T.: -0.025 min  
 Response: 3107  
 Conc: 1.83 ng/ml

Instrument :  
 ECD\_O  
 ClientSampleId :  
 PS-7



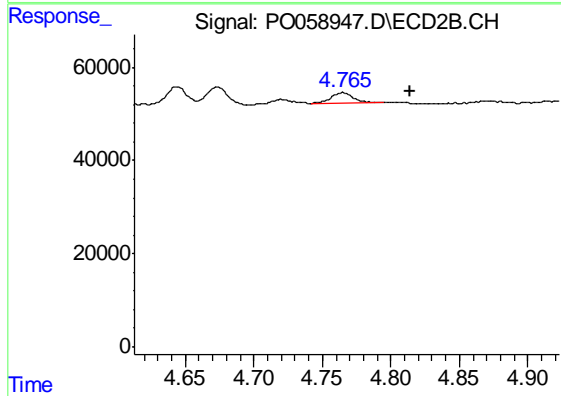
#5 AR-1016-3

R.T.: 4.765 min  
 Delta R.T.: -0.008 min  
 Response: 26900  
 Conc: 23.69 ng/ml



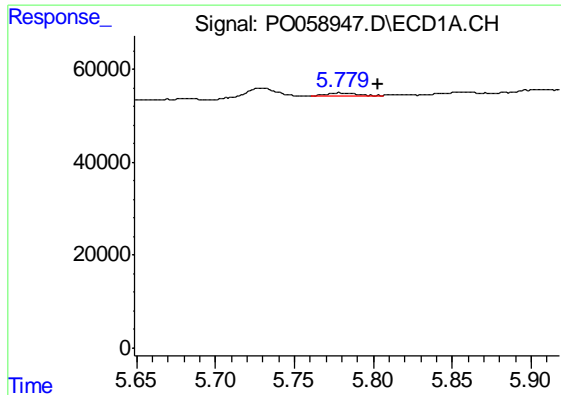
#6 AR-1016-4

R.T.: 5.568 min  
 Delta R.T.: 0.053 min  
 Response: -21018  
 Conc: N.D.



#6 AR-1016-4

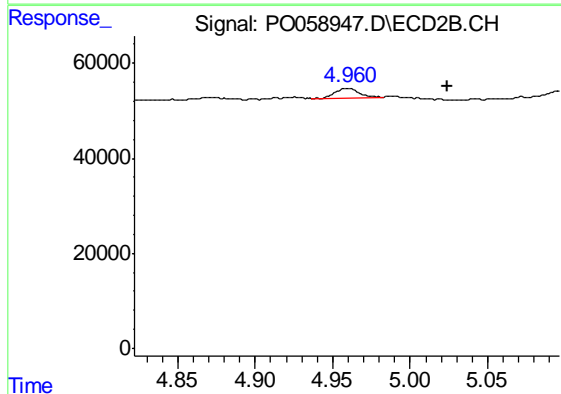
R.T.: 4.765 min  
 Delta R.T.: -0.050 min  
 Response: 26900  
 Conc: 28.52 ng/ml



#7 AR-1016-5

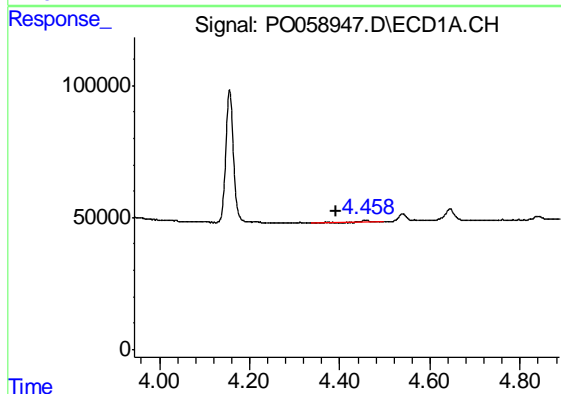
R.T.: 5.779 min  
 Delta R.T.: -0.025 min  
 Response: 8904  
 Conc: 6.22 ng/ml

Instrument :  
 ECD\_O  
 ClientSampled :  
 PS-7



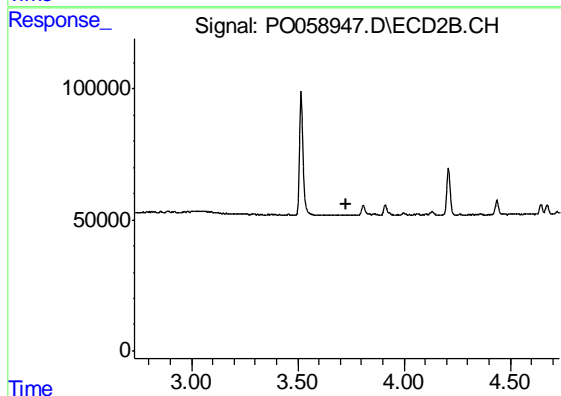
#7 AR-1016-5

R.T.: 4.960 min  
 Delta R.T.: -0.064 min  
 Response: 20208  
 Conc: 16.41 ng/ml



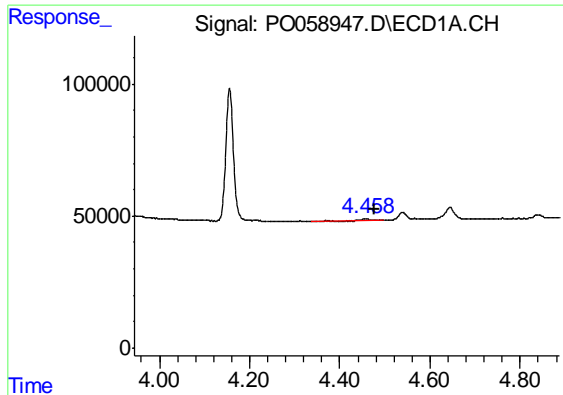
#8 AR-1221-1

R.T.: 4.457 min  
 Delta R.T.: 0.066 min  
 Response: 17184  
 Conc: 37.83 ng/ml



#8 AR-1221-1

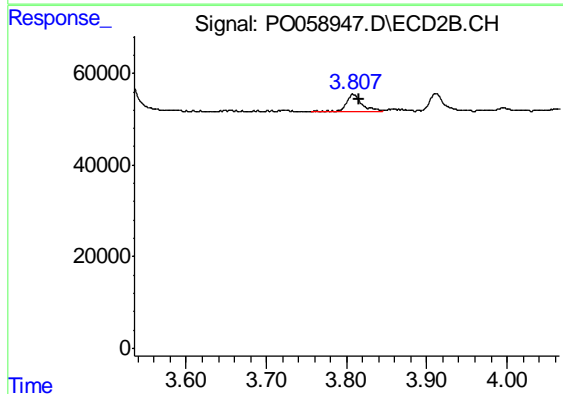
R.T.: 0.000 min  
 Exp R.T. : 3.732 min  
 Response: 0  
 Conc: N.D.



#9 AR-1221-2

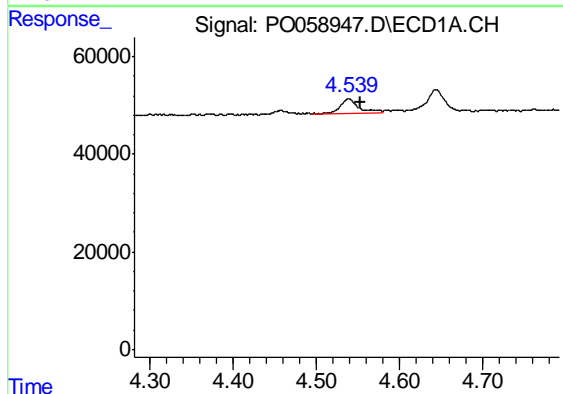
R.T.: 4.457 min  
 Delta R.T.: -0.020 min  
 Response: 17184  
 Conc: 49.84 ng/ml

Instrument :  
 ECD\_O  
 ClientSampled :  
 PS-7



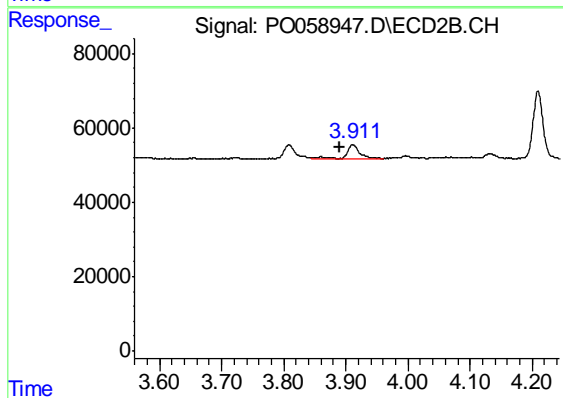
#9 AR-1221-2

R.T.: 3.808 min  
 Delta R.T.: -0.008 min  
 Response: 47961  
 Conc: 160.69 ng/ml



#10 AR-1221-3

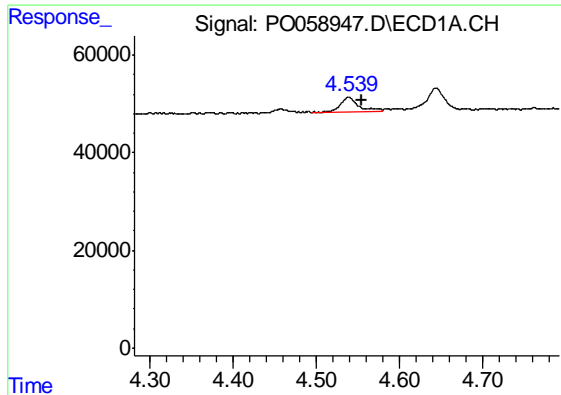
R.T.: 4.539 min  
 Delta R.T.: -0.014 min  
 Response: 47616  
 Conc: 43.42 ng/ml



#10 AR-1221-3

R.T.: 3.911 min  
 Delta R.T.: 0.022 min  
 Response: 59998  
 Conc: 62.72 ng/ml

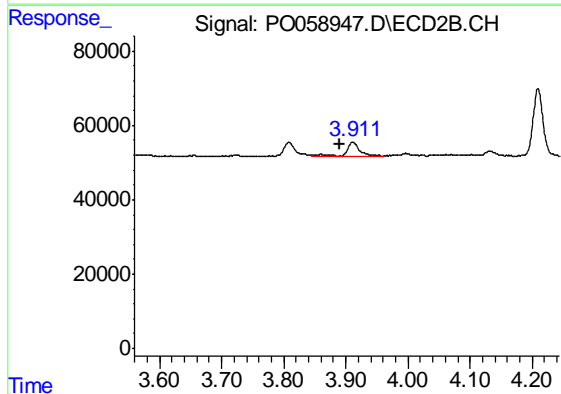




#11 AR-1232-1

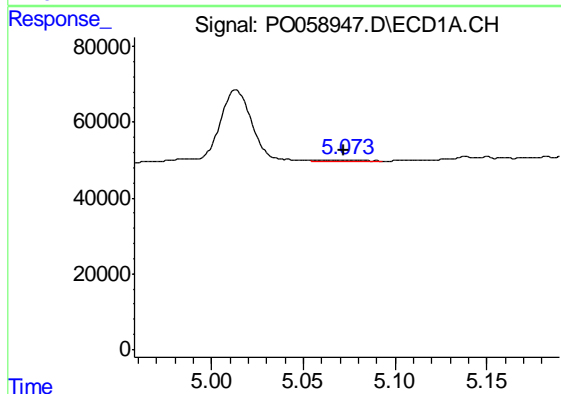
R.T.: 4.539 min  
Delta R.T.: -0.015 min  
Response: 47616  
Conc: 52.74 ng/ml

Instrument :  
ECD\_O  
ClientSampled :  
PS-7



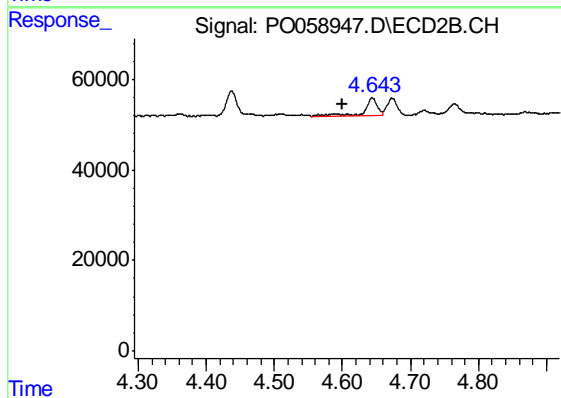
#11 AR-1232-1

R.T.: 3.911 min  
Delta R.T.: 0.022 min  
Response: 59998  
Conc: 76.38 ng/ml



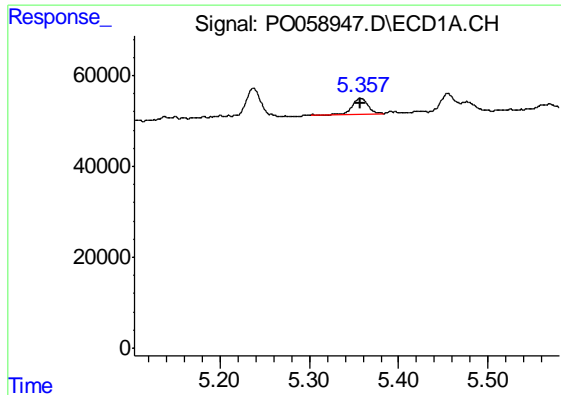
#12 AR-1232-2

R.T.: 5.074 min  
Delta R.T.: 0.002 min  
Response: 6600  
Conc: 13.42 ng/ml



#12 AR-1232-2

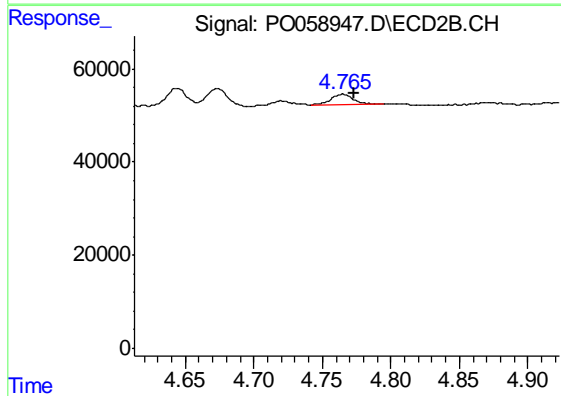
R.T.: 4.644 min  
Delta R.T.: 0.044 min  
Response: 52677  
Conc: 62.30 ng/ml



#13 AR-1232-3

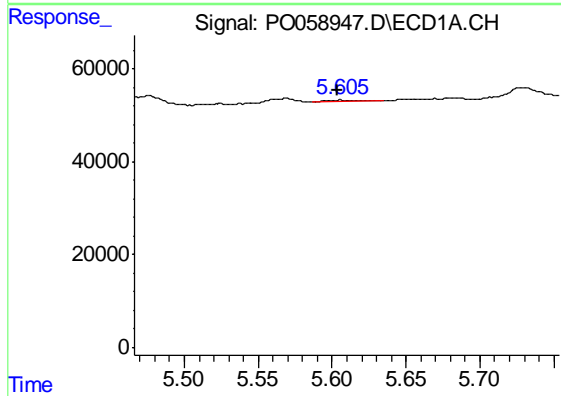
R.T.: 5.357 min  
 Delta R.T.: 0.000 min  
 Response: 40527  
 Conc: 37.85 ng/ml

Instrument :  
 ECD\_O  
 ClientSampled :  
 PS-7



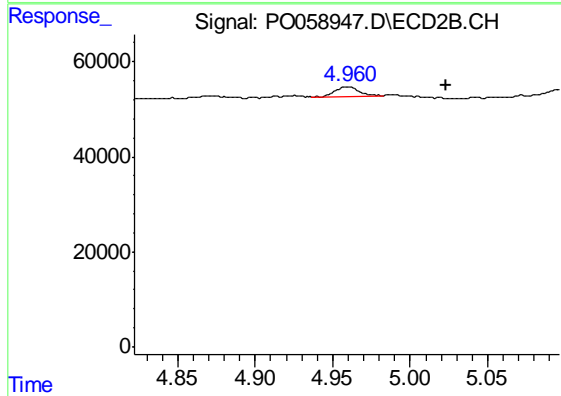
#13 AR-1232-3

R.T.: 4.765 min  
 Delta R.T.: -0.008 min  
 Response: 26900  
 Conc: 61.17 ng/ml



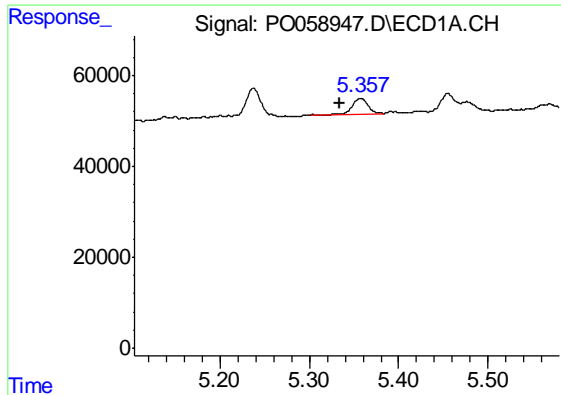
#15 AR-1232-5

R.T.: 5.606 min  
 Delta R.T.: 0.003 min  
 Response: 4283  
 Conc: 10.50 ng/ml



#15 AR-1232-5

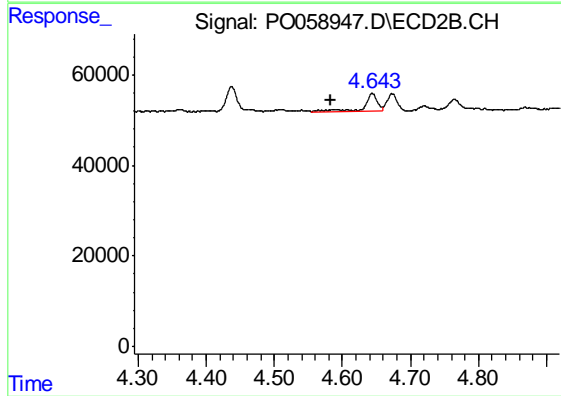
R.T.: 4.960 min  
 Delta R.T.: -0.063 min  
 Response: 20208  
 Conc: 45.90 ng/ml



#16 AR-1242-1

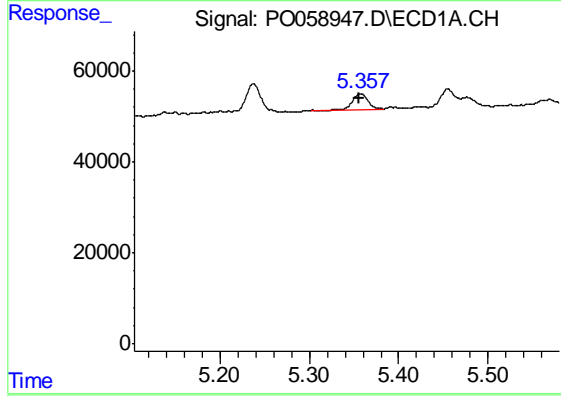
R.T.: 5.357 min  
 Delta R.T.: 0.023 min  
 Response: 40527  
 Conc: 31.65 ng/ml

Instrument :  
 ECD\_O  
 ClientSampleId :  
 PS-7



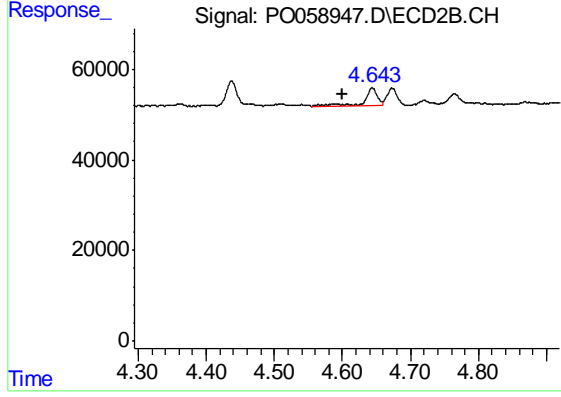
#16 AR-1242-1

R.T.: 4.644 min  
 Delta R.T.: 0.061 min  
 Response: 52677  
 Conc: 51.89 ng/ml



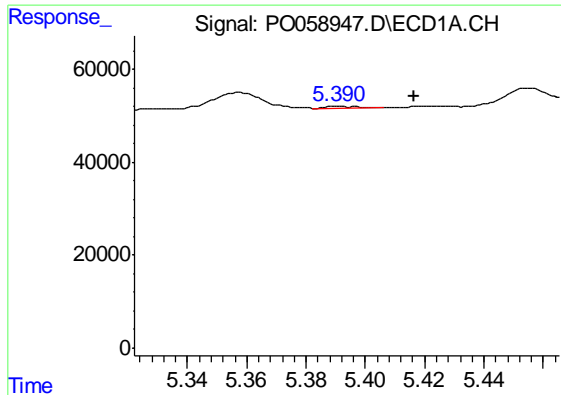
#17 AR-1242-2

R.T.: 5.357 min  
 Delta R.T.: 0.002 min  
 Response: 40527  
 Conc: 21.42 ng/ml



#17 AR-1242-2

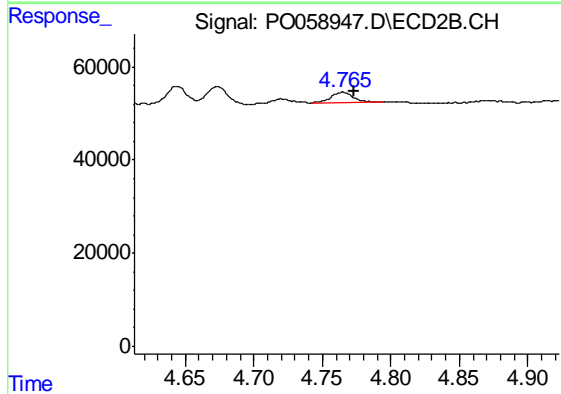
R.T.: 4.644 min  
 Delta R.T.: 0.044 min  
 Response: 52677  
 Conc: 34.89 ng/ml



#18 AR-1242-3

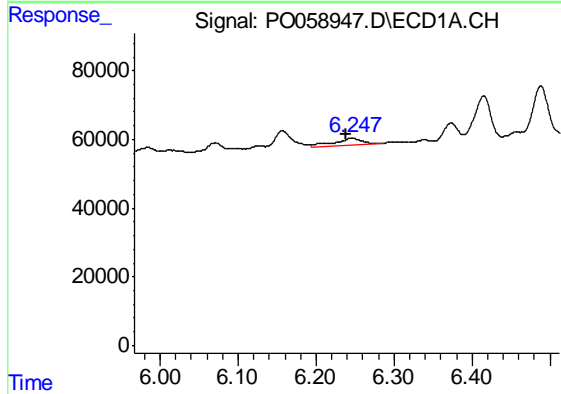
R.T.: 5.392 min  
 Delta R.T.: -0.025 min  
 Response: 3107  
 Conc: 2.65 ng/ml

Instrument :  
 ECD\_O  
 ClientSampleId :  
 PS-7



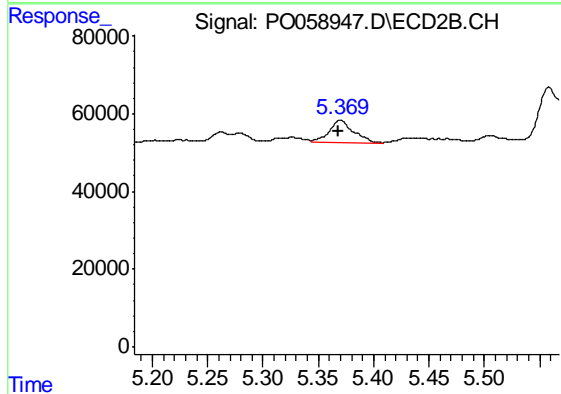
#18 AR-1242-3

R.T.: 4.765 min  
 Delta R.T.: -0.008 min  
 Response: 26900  
 Conc: 33.03 ng/ml



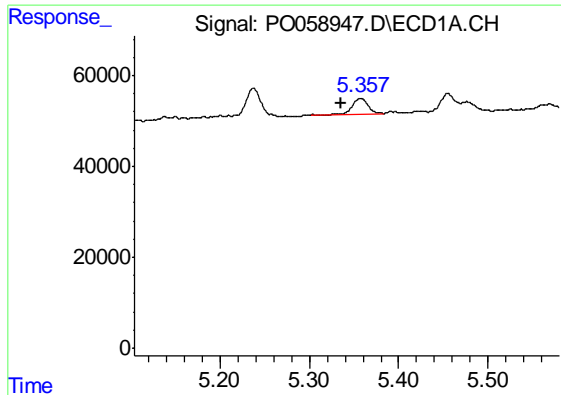
#20 AR-1242-5

R.T.: 6.246 min  
 Delta R.T.: 0.007 min  
 Response: 48641  
 Conc: 41.41 ng/ml



#20 AR-1242-5

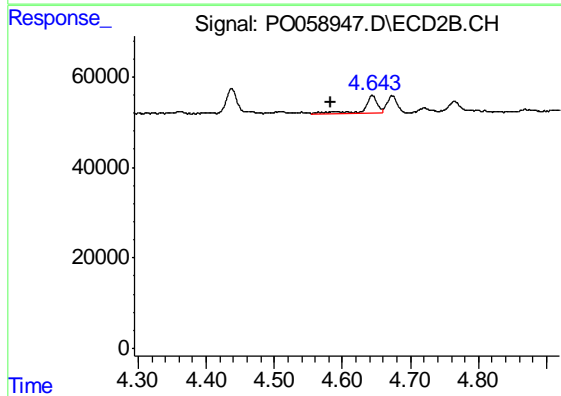
R.T.: 5.370 min  
 Delta R.T.: 0.001 min  
 Response: 86993  
 Conc: 81.10 ng/ml



#21 AR-1248-1

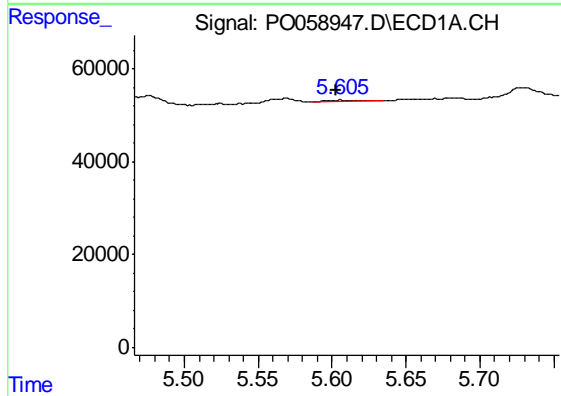
R.T.: 5.357 min  
 Delta R.T.: 0.022 min  
 Response: 40527  
 Conc: 40.09 ng/ml

Instrument :  
 ECD\_O  
 ClientSampled :  
 PS-7



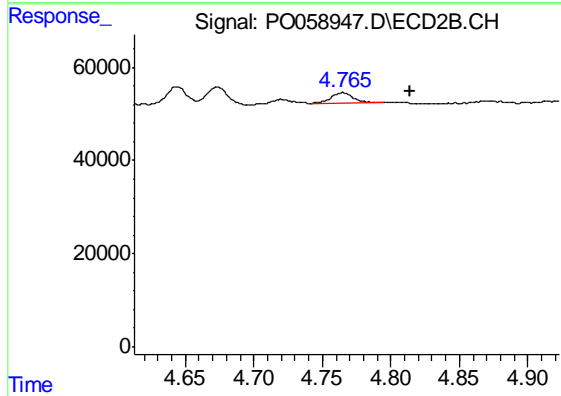
#21 AR-1248-1

R.T.: 4.644 min  
 Delta R.T.: 0.061 min  
 Response: 52677  
 Conc: 65.88 ng/ml



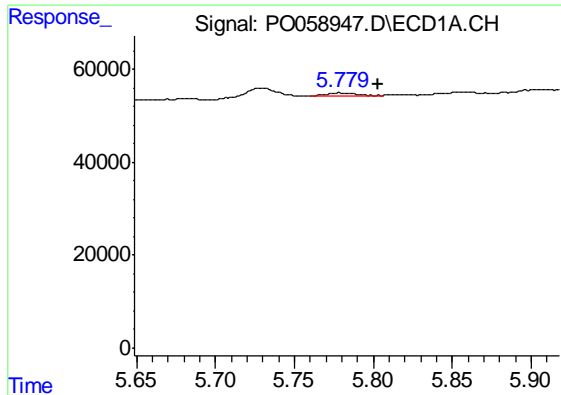
#22 AR-1248-2

R.T.: 5.606 min  
 Delta R.T.: 0.004 min  
 Response: 4283  
 Conc: 2.96 ng/ml



#22 AR-1248-2

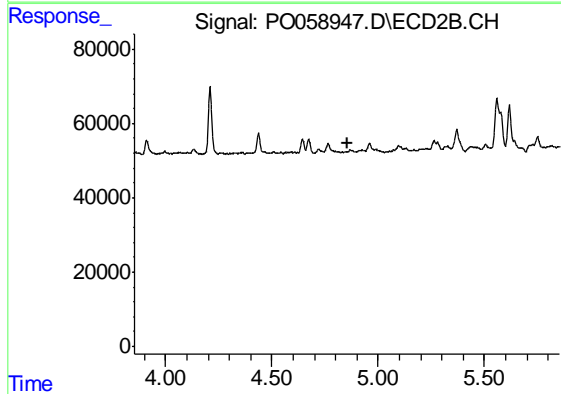
R.T.: 4.765 min  
 Delta R.T.: -0.049 min  
 Response: 26900  
 Conc: 24.28 ng/ml



#23 AR-1248-3

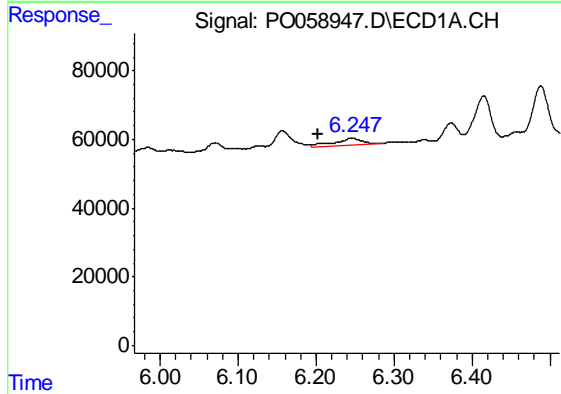
R.T.: 5.779 min  
 Delta R.T.: -0.025 min  
 Response: 8904  
 Conc: 5.42 ng/ml

Instrument :  
 ECD\_O  
 ClientSampled :  
 PS-7



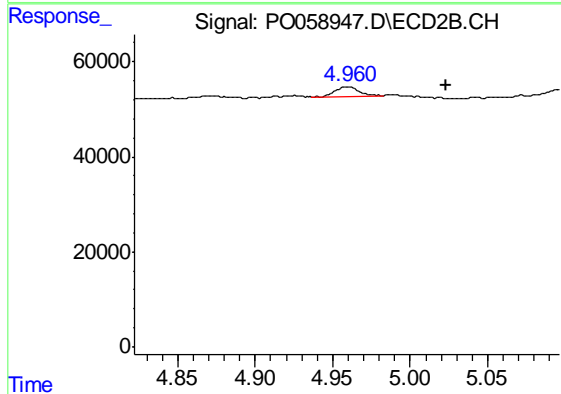
#23 AR-1248-3

R.T.: 0.000 min  
 Exp R.T. : 4.854 min  
 Response: 0  
 Conc: N.D.



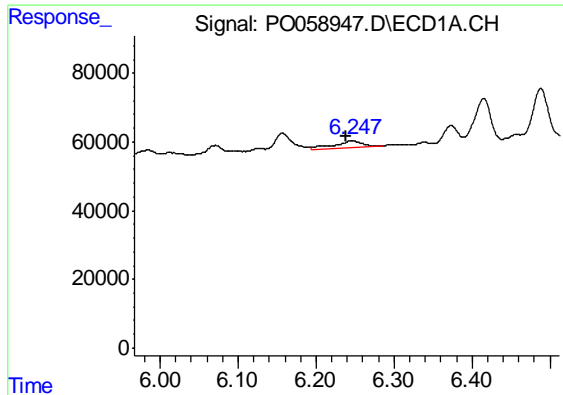
#24 AR-1248-4

R.T.: 6.246 min  
 Delta R.T.: 0.043 min  
 Response: 48641  
 Conc: 24.02 ng/ml



#24 AR-1248-4

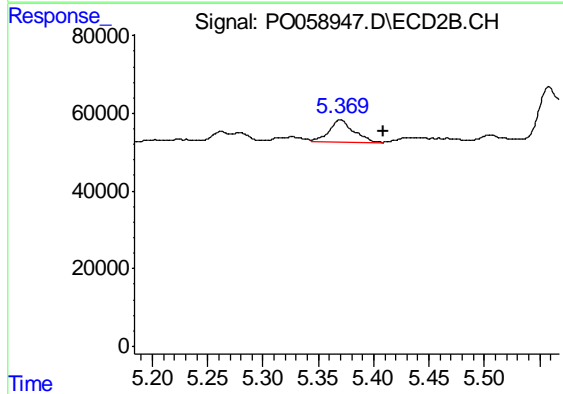
R.T.: 4.960 min  
 Delta R.T.: -0.063 min  
 Response: 20208  
 Conc: 14.47 ng/ml



#25 AR-1248-5

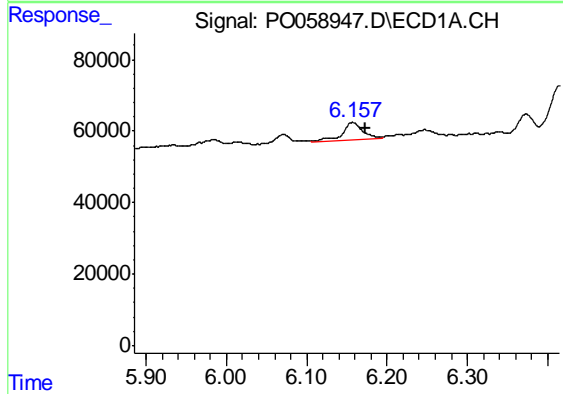
R.T.: 6.246 min  
 Delta R.T.: 0.007 min  
 Response: 48641  
 Conc: 25.20 ng/ml

Instrument :  
 ECD\_O  
 ClientSampled :  
 PS-7



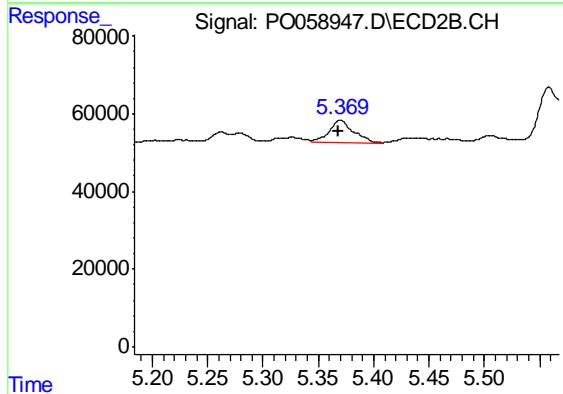
#25 AR-1248-5

R.T.: 5.370 min  
 Delta R.T.: -0.039 min  
 Response: 86993  
 Conc: 62.80 ng/ml



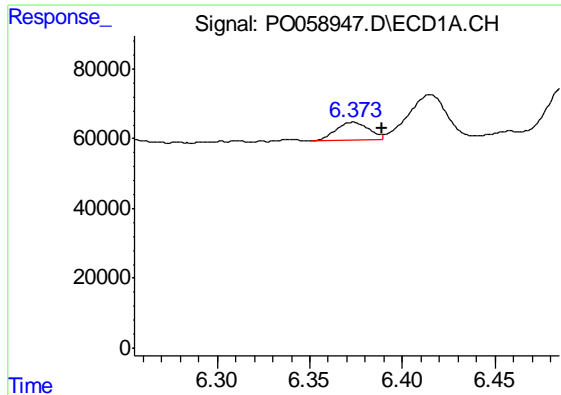
#26 AR-1254-1

R.T.: 6.157 min  
 Delta R.T.: -0.016 min  
 Response: 89316  
 Conc: 37.83 ng/ml



#26 AR-1254-1

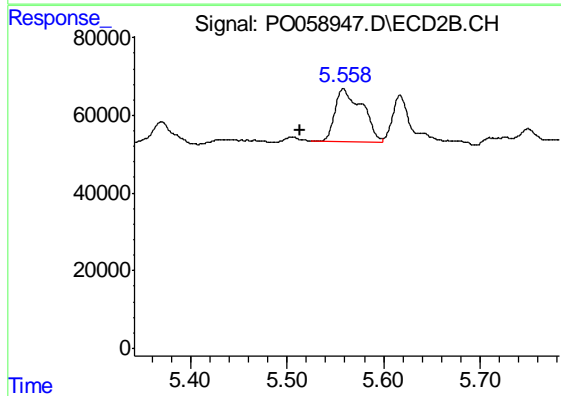
R.T.: 5.370 min  
 Delta R.T.: 0.001 min  
 Response: 86993  
 Conc: 33.58 ng/ml



#27 AR-1254-2

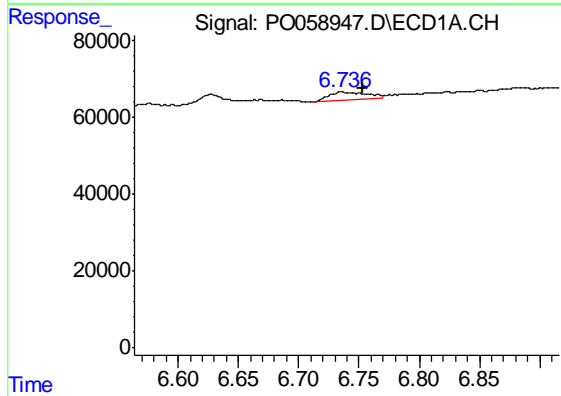
R.T.: 6.373 min  
 Delta R.T.: -0.016 min  
 Response: 60327  
 Conc: 15.65 ng/ml

Instrument :  
 ECD\_O  
 ClientSampled :  
 PS-7



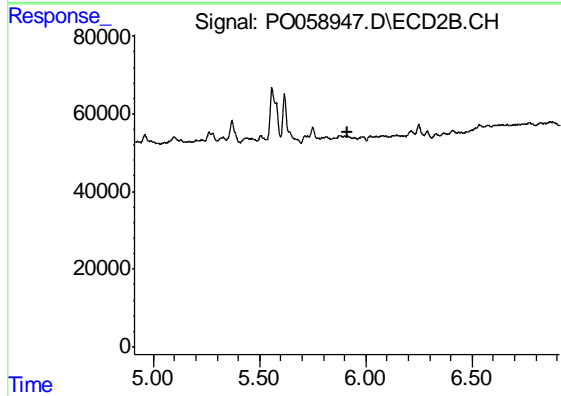
#27 AR-1254-2

R.T.: 5.558 min  
 Delta R.T.: 0.045 min  
 Response: 267245  
 Conc: 116.73 ng/ml



#28 AR-1254-3

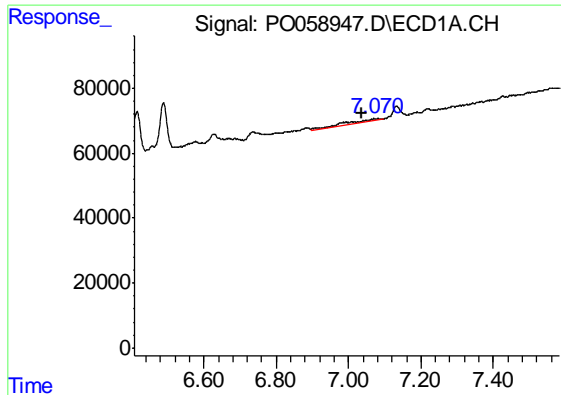
R.T.: 6.737 min  
 Delta R.T.: -0.017 min  
 Response: 47139  
 Conc: 11.64 ng/ml



#28 AR-1254-3

R.T.: 0.000 min  
 Exp R.T. : 5.911 min  
 Response: 0  
 Conc: N.D.

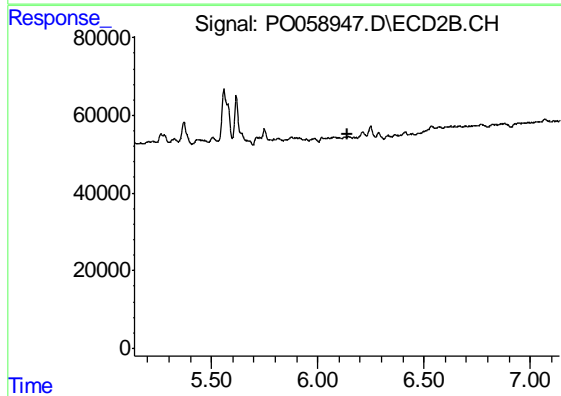




#29 AR-1254-4

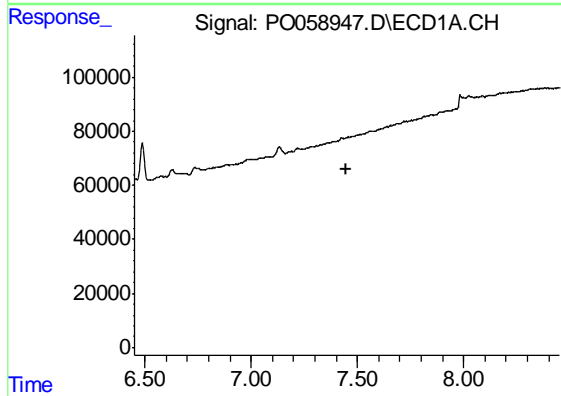
R.T.: 7.083 min  
 Delta R.T.: 0.047 min  
 Response: 49883  
 Conc: 13.85 ng/ml

Instrument :  
 ECD\_O  
 ClientSampled :  
 PS-7



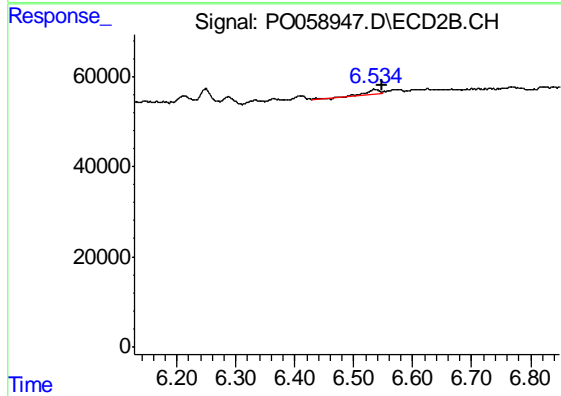
#29 AR-1254-4

R.T.: 0.000 min  
 Exp R.T. : 6.138 min  
 Response: 0  
 Conc: N.D.



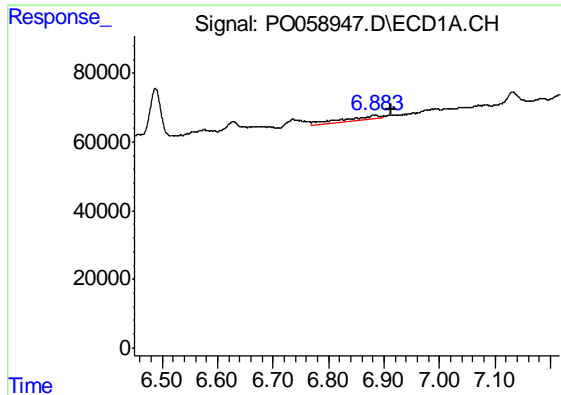
#30 AR-1254-5

R.T.: 0.000 min  
 Exp R.T. : 7.450 min  
 Response: 0  
 Conc: N.D.



#30 AR-1254-5

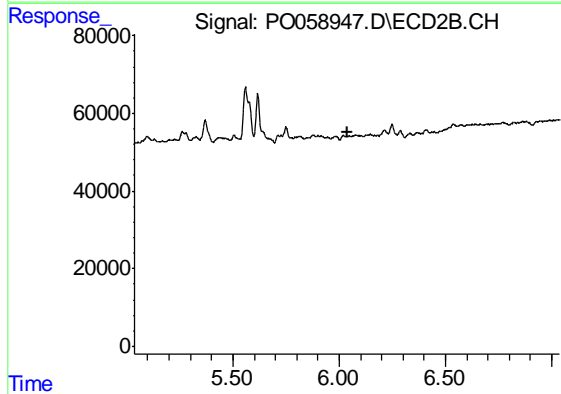
R.T.: 6.534 min  
 Delta R.T.: -0.014 min  
 Response: 12697  
 Conc: 3.68 ng/ml



#31 AR-1260-1

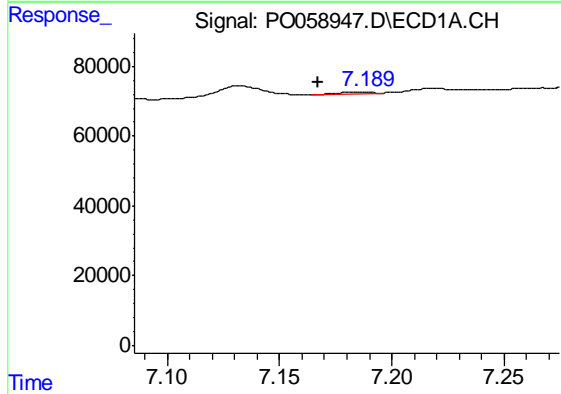
R.T.: 6.884 min  
 Delta R.T.: -0.028 min  
 Response: 47710  
 Conc: 16.57 ng/ml

Instrument :  
 ECD\_O  
 ClientSampled :  
 PS-7



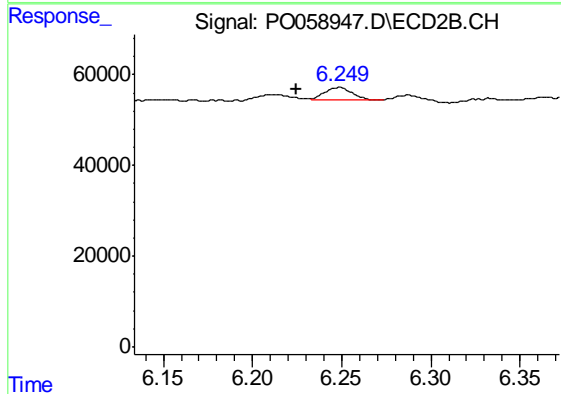
#31 AR-1260-1

R.T.: 0.000 min  
 Exp R.T. : 6.037 min  
 Response: 0  
 Conc: N.D.



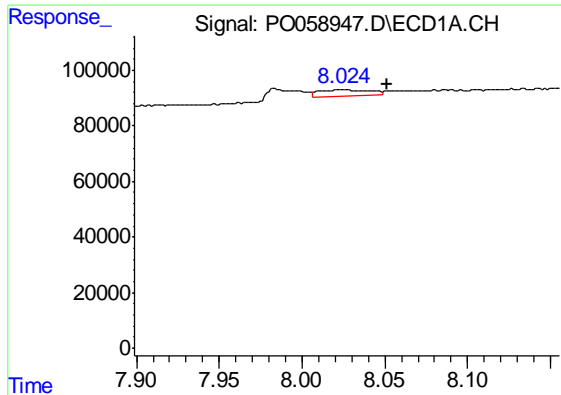
#32 AR-1260-2

R.T.: 7.188 min  
 Delta R.T.: 0.020 min  
 Response: 5307  
 Conc: 1.28 ng/ml



#32 AR-1260-2

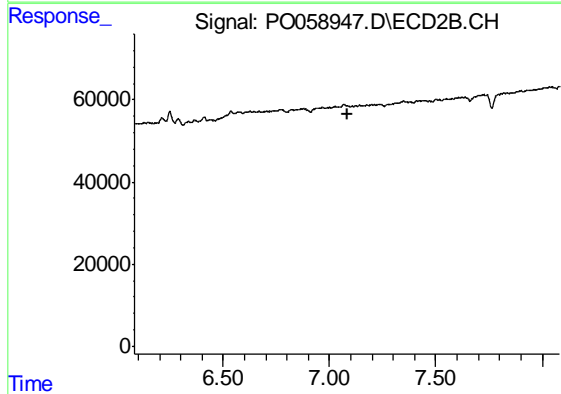
R.T.: 6.249 min  
 Delta R.T.: 0.024 min  
 Response: 32110  
 Conc: 10.60 ng/ml



#35 AR-1260-5

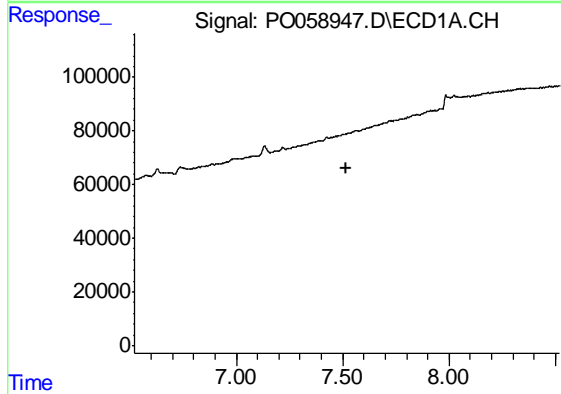
R.T.: 8.024 min  
 Delta R.T.: -0.027 min  
 Response: 45318  
 Conc: 6.16 ng/ml

Instrument :  
 ECD\_O  
 ClientSampled :  
 PS-7



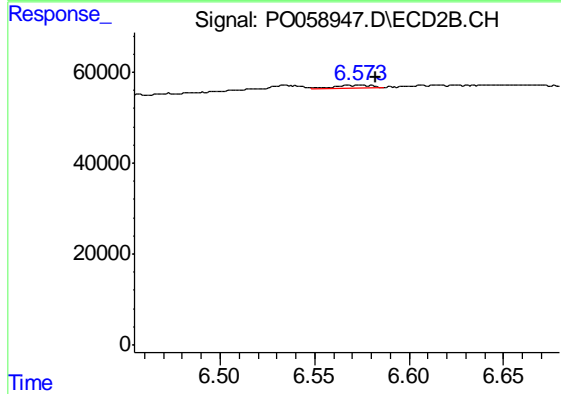
#35 AR-1260-5

R.T.: 0.000 min  
 Exp R.T. : 7.082 min  
 Response: 0  
 Conc: N.D.



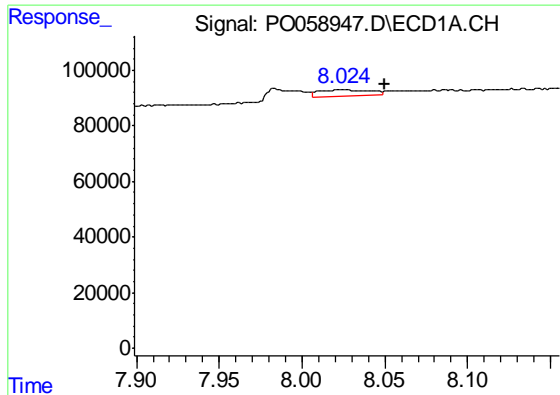
#36 AR-1262-1

R.T.: 0.000 min  
 Exp R.T. : 7.520 min  
 Response: 0  
 Conc: N.D.



#36 AR-1262-1

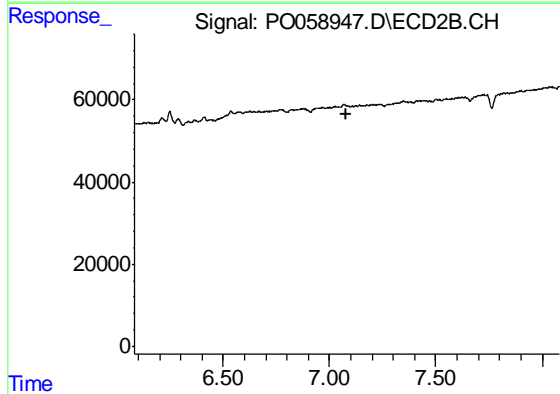
R.T.: 6.568 min  
 Delta R.T.: -0.014 min  
 Response: 9667  
 Conc: 2.71 ng/ml



#37 AR-1262-2

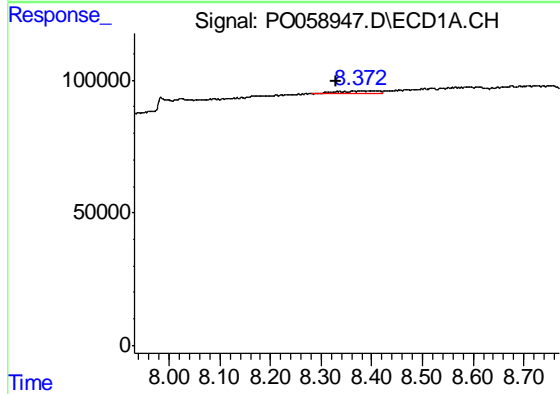
R.T.: 8.024 min  
 Delta R.T.: -0.026 min  
 Response: 45318  
 Conc: 5.69 ng/ml

Instrument :  
 ECD\_O  
 ClientSampled :  
 PS-7



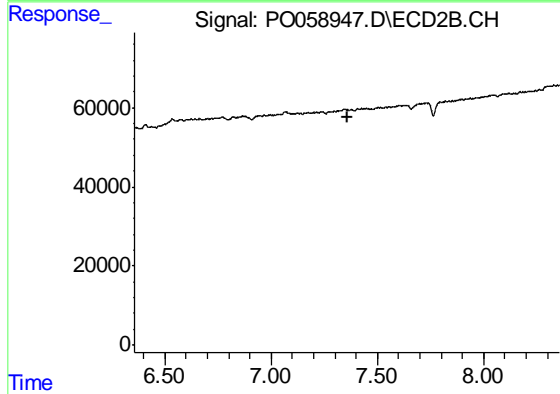
#37 AR-1262-2

R.T.: 0.000 min  
 Exp R.T. : 7.082 min  
 Response: 0  
 Conc: N.D.



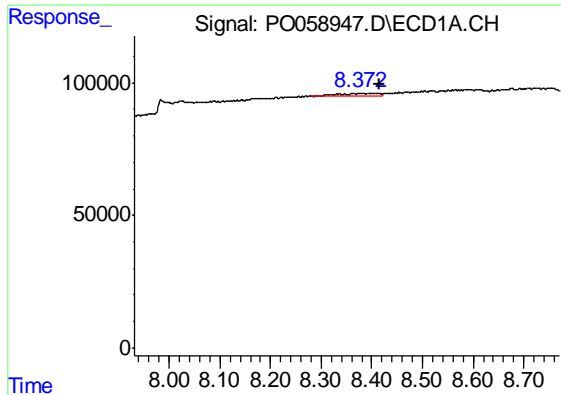
#38 AR-1262-3

R.T.: 8.373 min  
 Delta R.T.: 0.043 min  
 Response: 48150  
 Conc: 9.47 ng/ml



#38 AR-1262-3

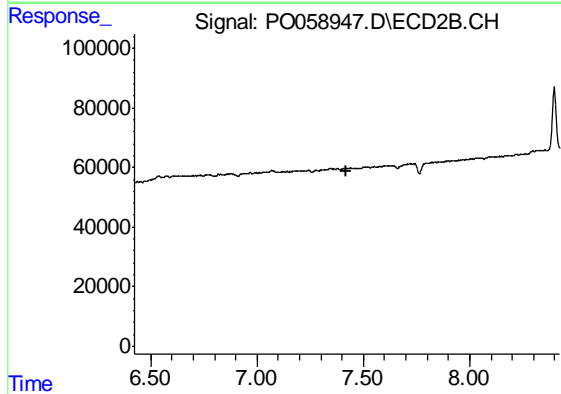
R.T.: 0.000 min  
 Exp R.T. : 7.357 min  
 Response: 0  
 Conc: N.D.



#39 AR-1262-4

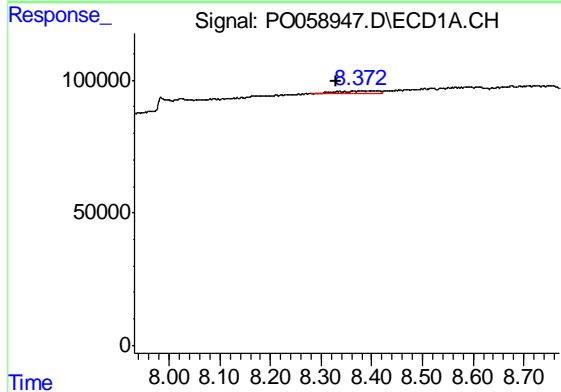
R.T.: 8.373 min  
 Delta R.T.: -0.043 min  
 Response: 48150  
 Conc: 12.71 ng/ml

Instrument :  
 ECD\_O  
 ClientSampled :  
 PS-7



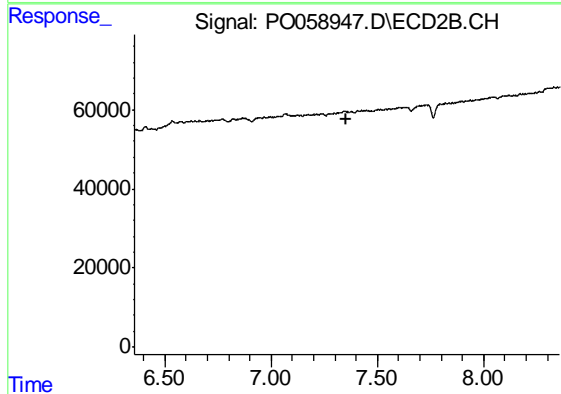
#39 AR-1262-4

R.T.: 0.000 min  
 Exp R.T. : 7.422 min  
 Response: 0  
 Conc: N.D.



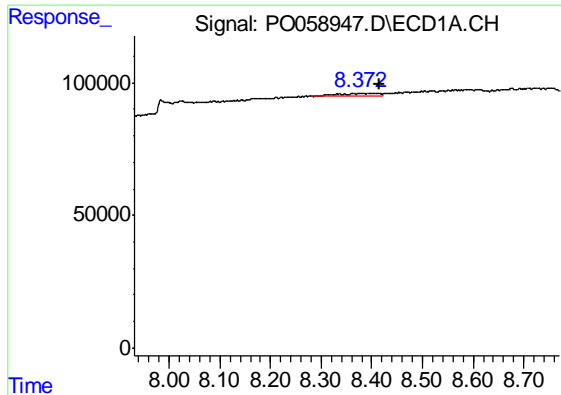
#41 AR-1268-1

R.T.: 8.373 min  
 Delta R.T.: 0.043 min  
 Response: 48150  
 Conc: 4.31 ng/ml



#41 AR-1268-1

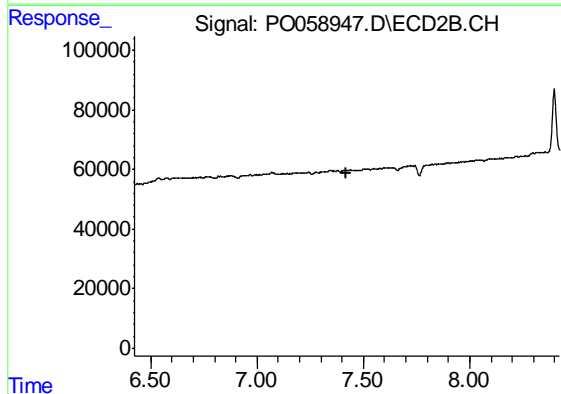
R.T.: 0.000 min  
 Exp R.T. : 7.357 min  
 Response: 0  
 Conc: N.D.



#42 AR-1268-2

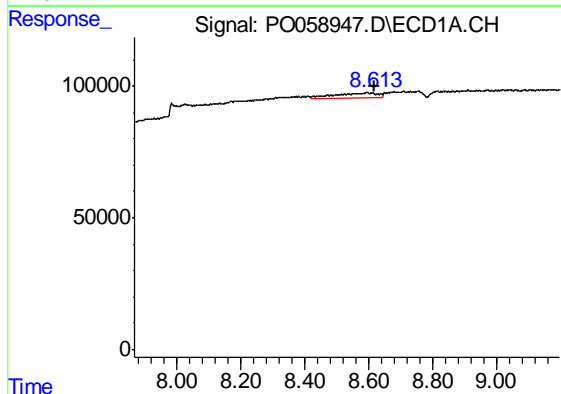
R.T.: 8.373 min  
 Delta R.T.: -0.044 min  
 Response: 48150  
 Conc: 5.13 ng/ml

Instrument :  
 ECD\_O  
 ClientSampled :  
 PS-7



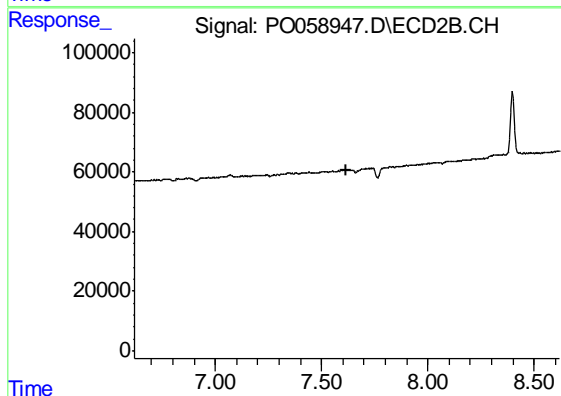
#42 AR-1268-2

R.T.: 0.000 min  
 Exp R.T. : 7.422 min  
 Response: 0  
 Conc: N.D.



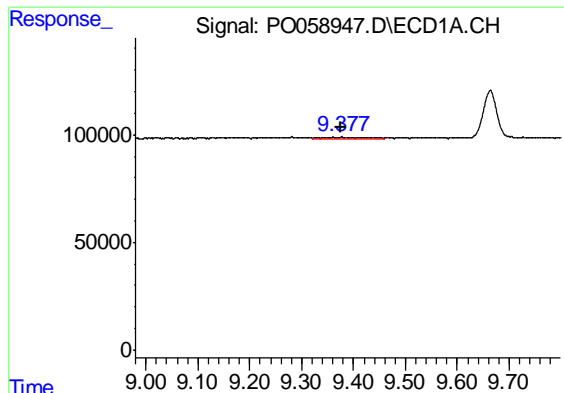
#43 AR-1268-3

R.T.: 8.596 min  
 Delta R.T.: -0.021 min  
 Response: 190305  
 Conc: 23.04 ng/ml



#43 AR-1268-3

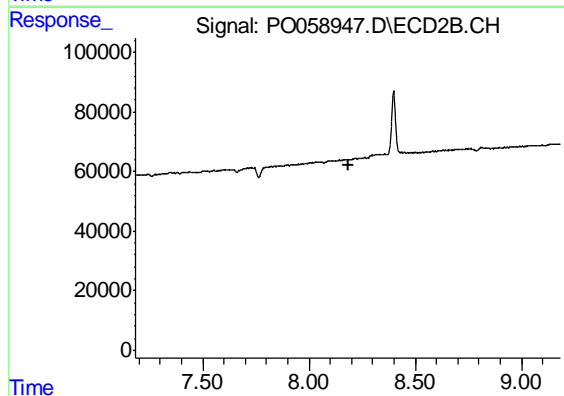
R.T.: 0.000 min  
 Exp R.T. : 7.619 min  
 Response: 0  
 Conc: N.D.



#45 AR-1268-5

R.T.: 9.377 min  
Delta R.T.: 0.000 min  
Response: 32259  
Conc: 1.50 ng/ml

Instrument :  
ECD\_O  
ClientSampleId :  
PS-7



#45 AR-1268-5

R.T.: 0.000 min  
Exp R.T. : 8.183 min  
Response: 0  
Conc: N.D.