

Data Path : Z:\pestpcbsrv\HPCHEM1\ECD_0\Data\P0080619\
 Data File : P0058934.D
 Signal(s) : Signal #1: ECD1A.CH Signal #2: ECD2B.CH
 Acq On : 06 Aug 2019 15:20
 Operator : SM/AJ
 Sample : AR1660CCC500
 Misc :
 ALS Vial : 3 Sample Multiplier: 1

Instrument :
 ECD_0
 ClientSampleId :
 AR1660CCC500

Manual Integrations
 APPROVED

Ankita
 8/7/2019 5:50:45 PM

Integration File signal 1: autoint1.e
 Integration File signal 2: autoint2.e
 Quant Time: Aug 06 15:42:22 2019
 Quant Method : Z:\pestpcbsrv\HPCHEM1\ECD_0\methods\P0072819.M
 Quant Title : GC EXTRACTABLES
 QLast Update : Sat Jul 27 06:49:05 2019
 Response via : Initial Calibration
 Integrator: ChemStation 6890 Scale Mode: Small noise peaks clipped

Volume Inj. : 2 µl
 Signal #1 Phase : ZB-MR1 Signal #2 Phase: ZB-MR2
 Signal #1 Info : 30Mx0.32mmx 0.50µ Signal #2 Info : 30M x 0.32mm x 0.25µm

Compound	RT#1	RT#2	Resp#1	Resp#2	ng/ml	ng/ml

System Monitoring Compounds						
1) SA Tetrachlo...	4.154	3.517	1922709	1726992	45.559m	43.229
2) SA Decachlor...	9.669	8.397	3033868	2158662	56.021	54.687m
Target Compounds						
3) L1 AR-1016-1	5.311	4.572	825397	642551	440.459m	440.713m
4) L1 AR-1016-2	5.333	4.589	1224243	984159	444.931m	458.474
5) L1 AR-1016-3	5.394	4.762	776220	539189	457.156	474.751
6) L1 AR-1016-4	5.493	4.803	669684	433122	478.618	459.155
7) L1 AR-1016-5	5.781	5.012	713417	559445	498.046m	454.303
31) L7 AR-1260-1	6.894	6.024	1456245	1135865	505.791	477.245
32) L7 AR-1260-2	7.150	6.212	2094208	1491314	503.409	492.296
33) L7 AR-1260-3	7.506	6.361	1874093	1322998	503.252	490.028m
34) L7 AR-1260-4	7.733	6.825	1761102	1164174	516.789	515.229
35) L7 AR-1260-5	8.041	7.068	4026884	2979972	547.520	553.348

(f)=RT Delta > 1/2 Window (#)=Amounts differ by > 25% (m)=manual int.

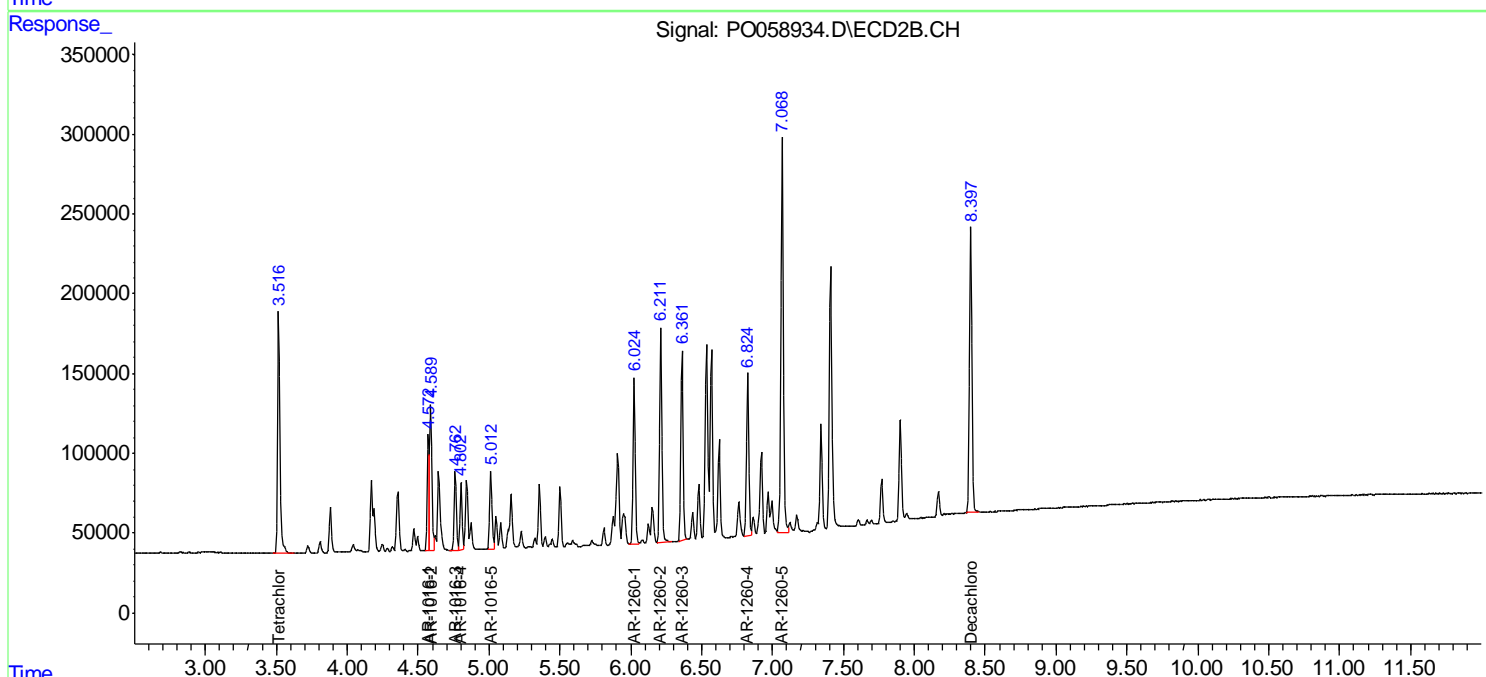
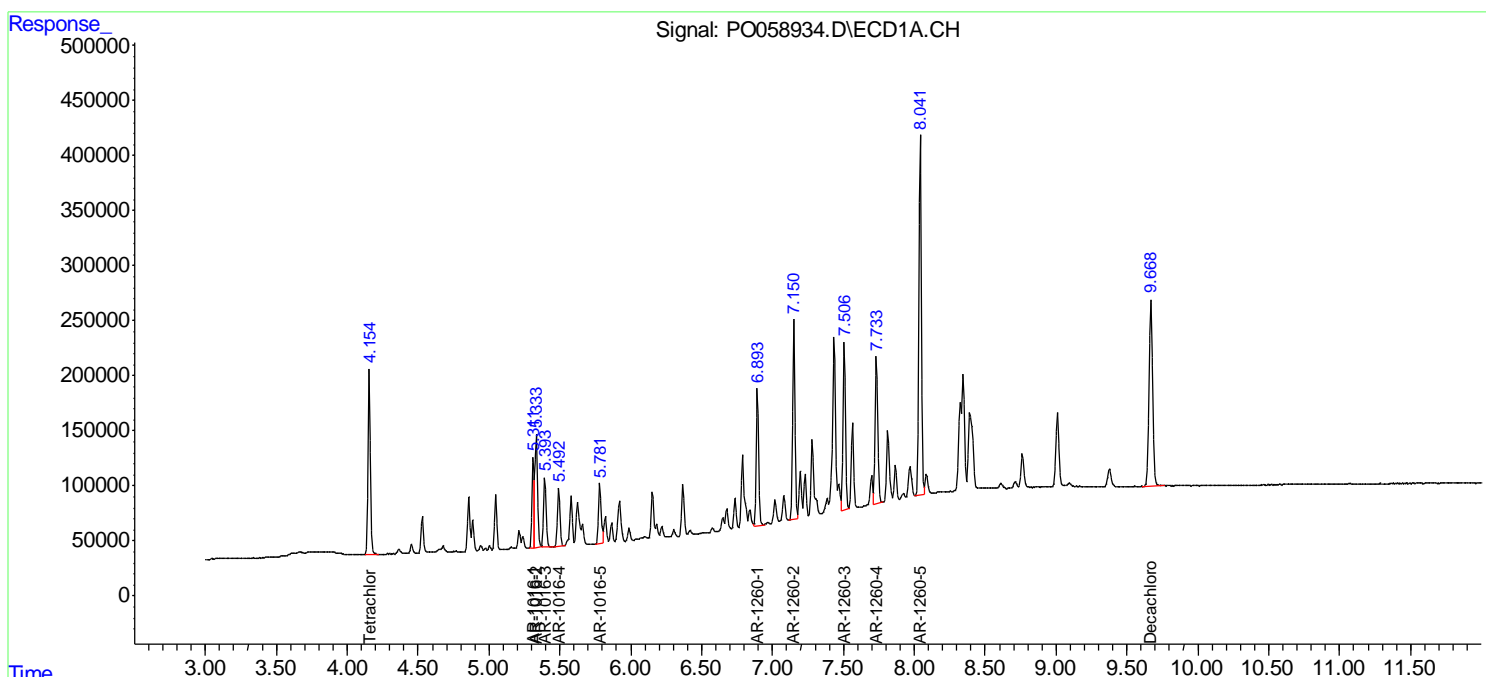
Data Path : Z:\pestpcbsrv\HPCHEM1\ECD_O\Data\PO080619\
 Data File : PO058934.D
 Signal(s) : Signal #1: ECD1A.CH Signal #2: ECD2B.CH
 Acq On : 06 Aug 2019 15:20
 Operator : SM/AJ
 Sample : AR1660CCC500
 Misc :
 ALS Vial : 3 Sample Multiplier: 1

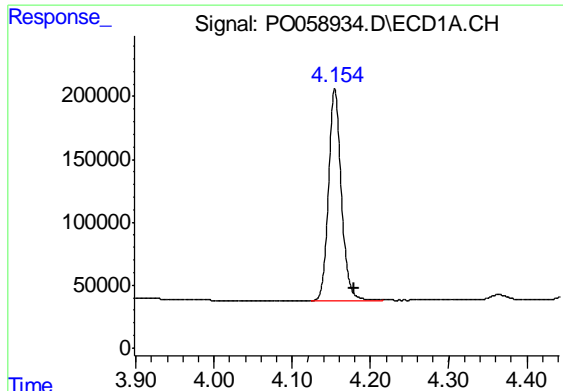
Instrument :
 ECD_O
Client Sampled :
 AR1660CCC500

Manual Integrations
APPROVED
 Ankita
 8/7/2019 5:50:45 PM

Integration File signal 1: autoint1.e
 Integration File signal 2: autoint2.e
 Quant Time: Aug 06 15:42:22 2019
 Quant Method : Z:\pestpcbsrv\HPCHEM1\ECD_O\methods\PO072819.M
 Quant Title : GC EXTRACTABLES
 QLast Update : Sat Jul 27 06:49:05 2019
 Response via : Initial Calibration
 Integrator: ChemStation 6890 Scale Mode: Small noise peaks clipped

Volume Inj. : 2 µl
 Signal #1 Phase : ZB-MR1 Signal #2 Phase: ZB-MR2
 Signal #1 Info : 30Mx0.32mmx 0.50µ Signal #2 Info : 30M x 0.32mm x 0.25µm

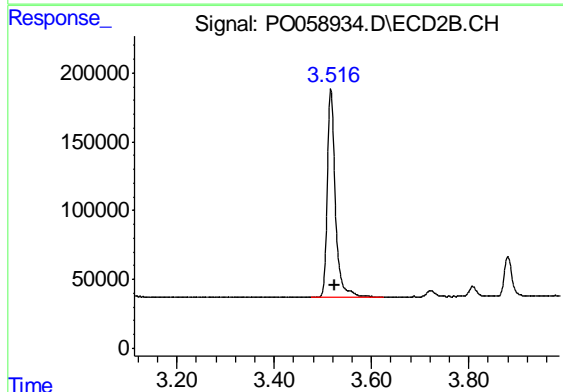




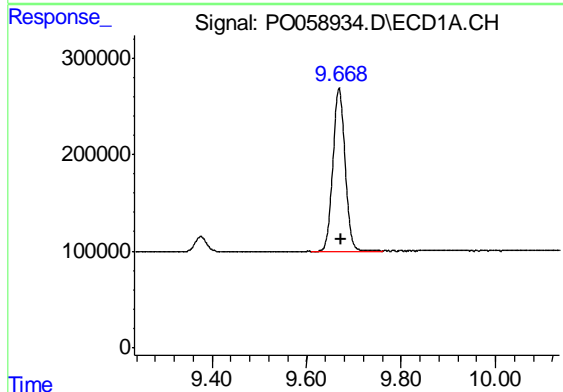
#1 Tetrachloro-m-xylene
 R.T.: 4.154 min
 Delta R.T.: -0.025 min
 Response: 1922709
 Conc: 45.56 ng/ml m

Instrument :
 ECD_O
 ClientSampleId :
 AR1660CCC500

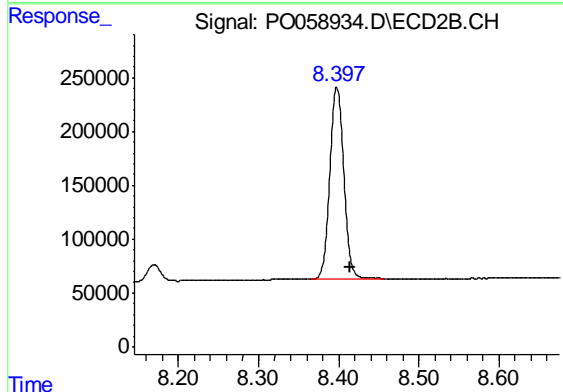
Manual Integrations
 APPROVED
 Ankita
 8/7/2019 5:50:45 PM



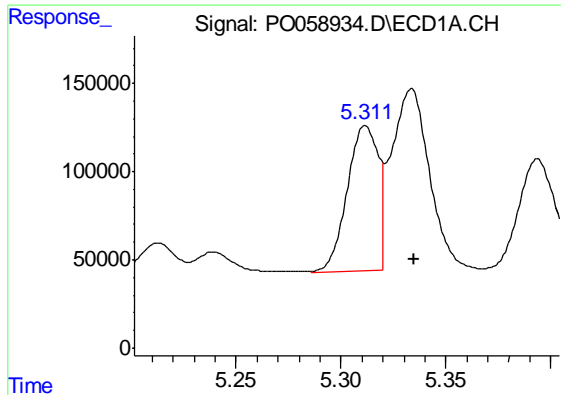
#1 Tetrachloro-m-xylene
 R.T.: 3.517 min
 Delta R.T.: -0.008 min
 Response: 1726992
 Conc: 43.23 ng/ml



#2 Decachlorobiphenyl
 R.T.: 9.669 min
 Delta R.T.: -0.004 min
 Response: 3033868
 Conc: 56.02 ng/ml



#2 Decachlorobiphenyl
 R.T.: 8.397 min
 Delta R.T.: -0.017 min
 Response: 2158662
 Conc: 54.69 ng/ml m



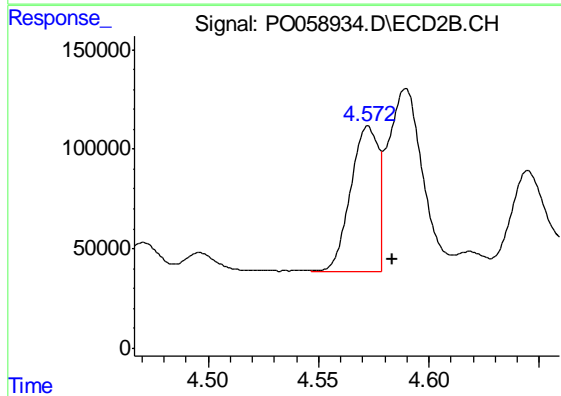
#3 AR-1016-1

R.T.: 5.311 min
 Delta R.T.: -0.024 min
 Response: 825397
 Conc: 440.46 ng/ml m

Instrument :
 ECD_O
 ClientSampled :
 AR1660CCC500

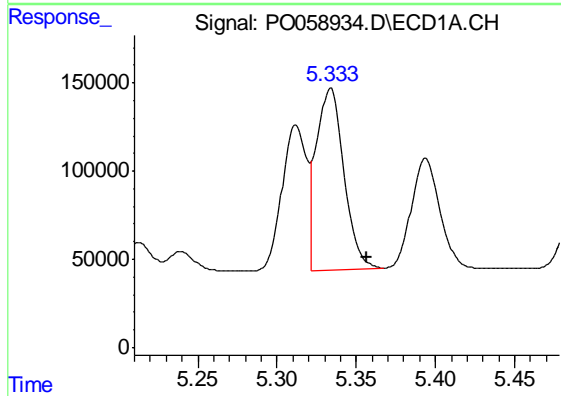
Manual Integrations
 APPROVED

Ankita
 8/7/2019 5:50:45 PM



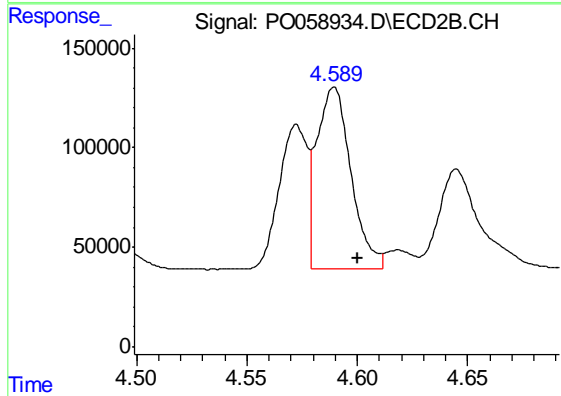
#3 AR-1016-1

R.T.: 4.572 min
 Delta R.T.: -0.011 min
 Response: 642551
 Conc: 440.71 ng/ml m



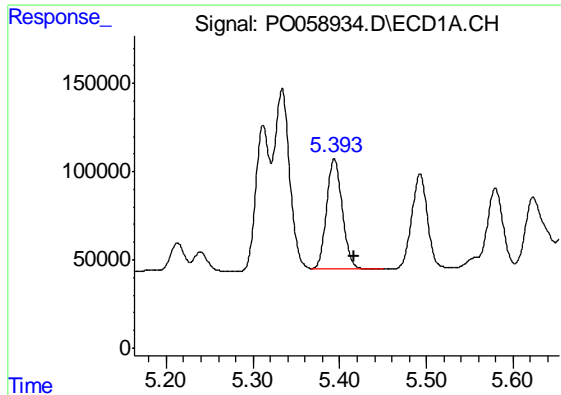
#4 AR-1016-2

R.T.: 5.333 min
 Delta R.T.: -0.023 min
 Response: 1224243
 Conc: 444.93 ng/ml m



#4 AR-1016-2

R.T.: 4.589 min
 Delta R.T.: -0.011 min
 Response: 984159
 Conc: 458.47 ng/ml



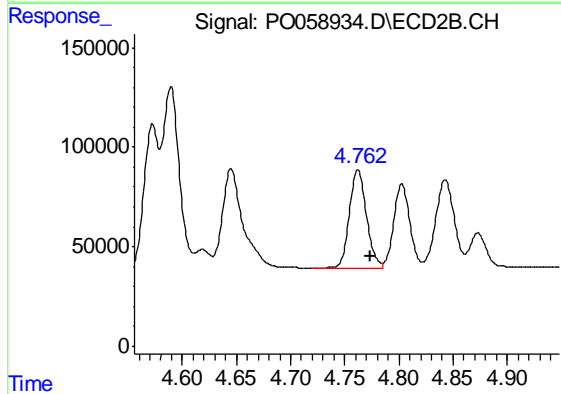
#5 AR-1016-3

R.T.: 5.394 min
 Delta R.T.: -0.023 min
 Response: 776220
 Conc: 457.16 ng/ml

Instrument :
 ECD_O
 ClientSampled :
 AR1660CCC500

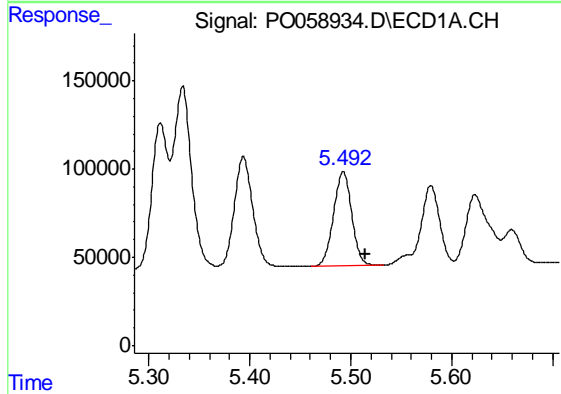
Manual Integrations
 APPROVED

Ankita
 8/7/2019 5:50:45 PM



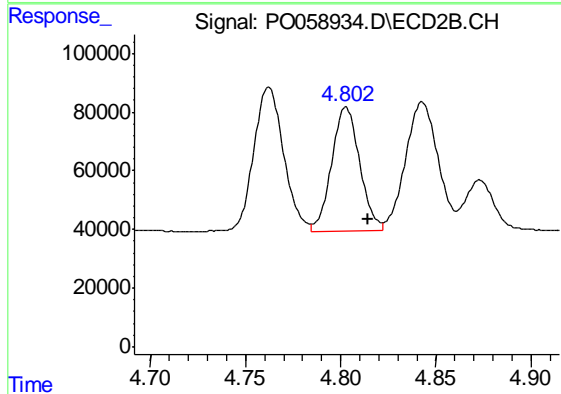
#5 AR-1016-3

R.T.: 4.762 min
 Delta R.T.: -0.011 min
 Response: 539189
 Conc: 474.75 ng/ml



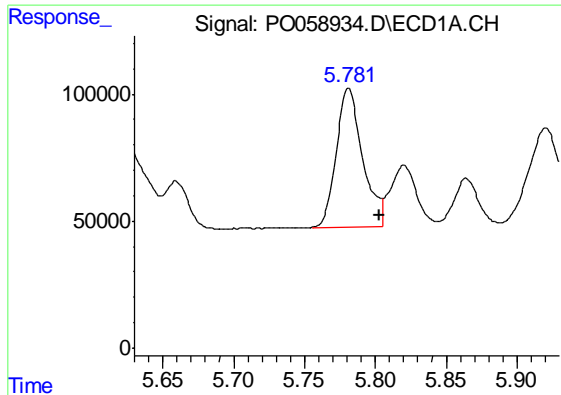
#6 AR-1016-4

R.T.: 5.493 min
 Delta R.T.: -0.022 min
 Response: 669684
 Conc: 478.62 ng/ml



#6 AR-1016-4

R.T.: 4.803 min
 Delta R.T.: -0.012 min
 Response: 433122
 Conc: 459.16 ng/ml



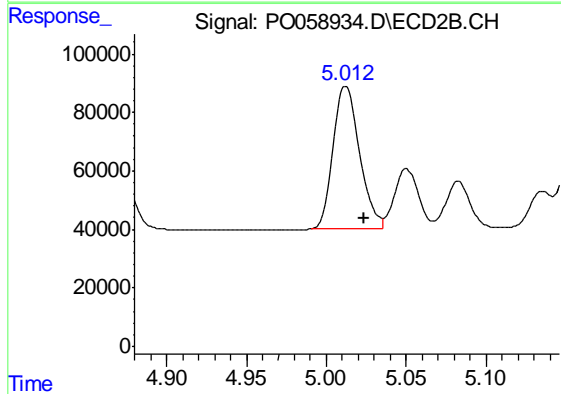
#7 AR-1016-5

R.T.: 5.781 min
 Delta R.T.: -0.023 min
 Response: 713417
 Conc: 498.05 ng/ml m

Instrument :
 ECD_O
 ClientSampleId :
 AR1660CCC500

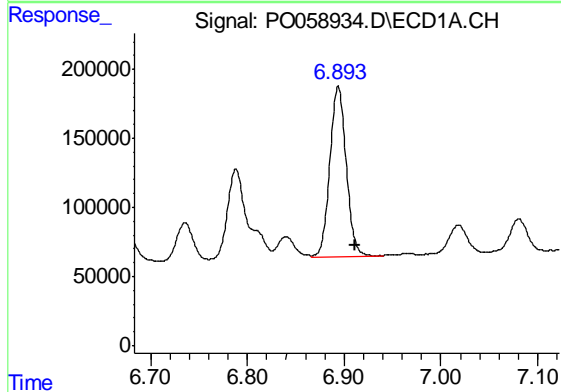
Manual Integrations
 APPROVED

Ankita
 8/7/2019 5:50:45 PM



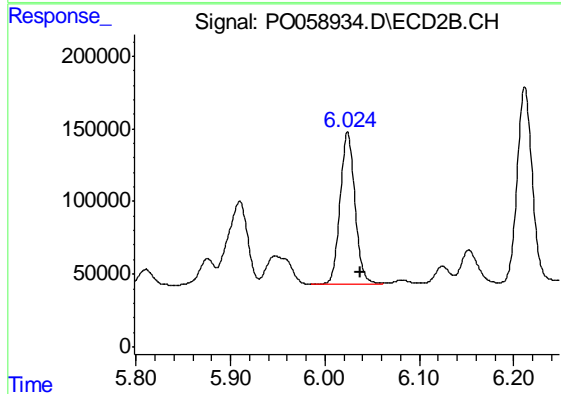
#7 AR-1016-5

R.T.: 5.012 min
 Delta R.T.: -0.012 min
 Response: 559445
 Conc: 454.30 ng/ml



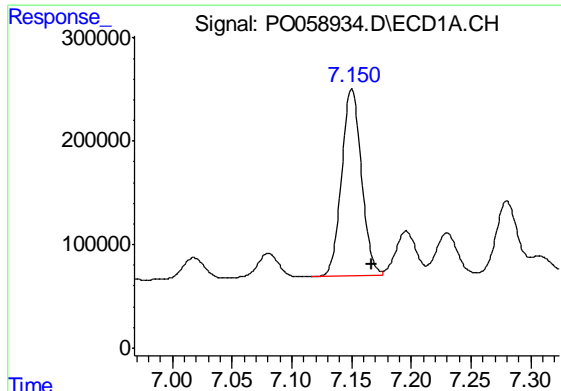
#31 AR-1260-1

R.T.: 6.894 min
 Delta R.T.: -0.018 min
 Response: 1456245
 Conc: 505.79 ng/ml



#31 AR-1260-1

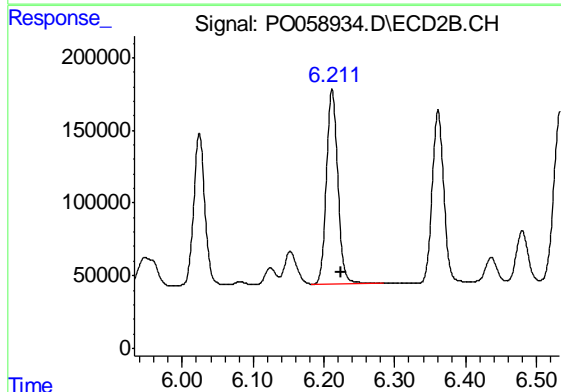
R.T.: 6.024 min
 Delta R.T.: -0.013 min
 Response: 1135865
 Conc: 477.24 ng/ml



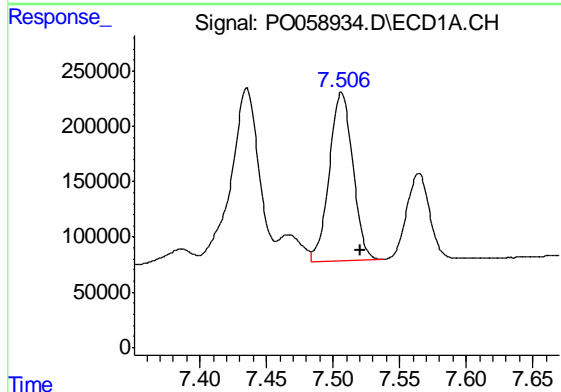
#32 AR-1260-2
 R.T.: 7.150 min
 Delta R.T.: -0.017 min
 Response: 2094208
 Conc: 503.41 ng/ml

Instrument :
 ECD_O
ClientSampleId :
 AR1660CCC500

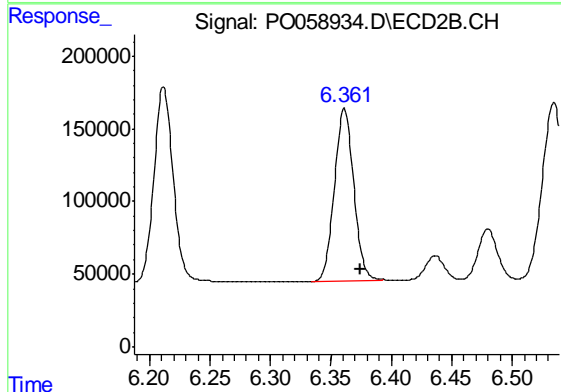
Manual Integrations
APPROVED
 Ankita
 8/7/2019 5:50:45 PM



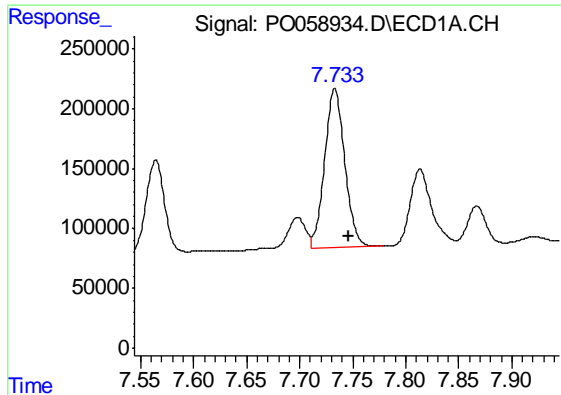
#32 AR-1260-2
 R.T.: 6.212 min
 Delta R.T.: -0.013 min
 Response: 1491314
 Conc: 492.30 ng/ml



#33 AR-1260-3
 R.T.: 7.506 min
 Delta R.T.: -0.014 min
 Response: 1874093
 Conc: 503.25 ng/ml



#33 AR-1260-3
 R.T.: 6.361 min
 Delta R.T.: -0.014 min
 Response: 1322998
 Conc: 490.03 ng/ml m



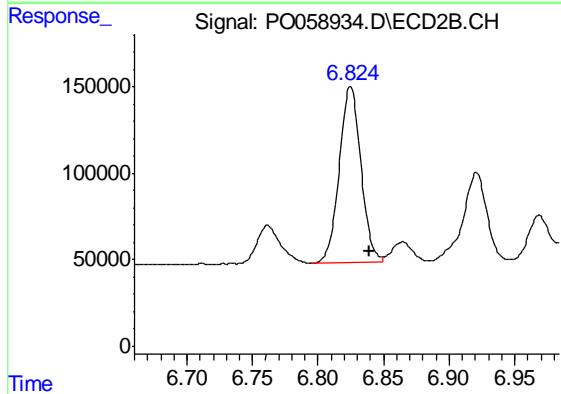
#34 AR-1260-4

R.T.: 7.733 min
 Delta R.T.: -0.013 min
 Response: 1761102
 Conc: 516.79 ng/ml

Instrument :
 ECD_O
 ClientSampled :
 AR1660CCC500

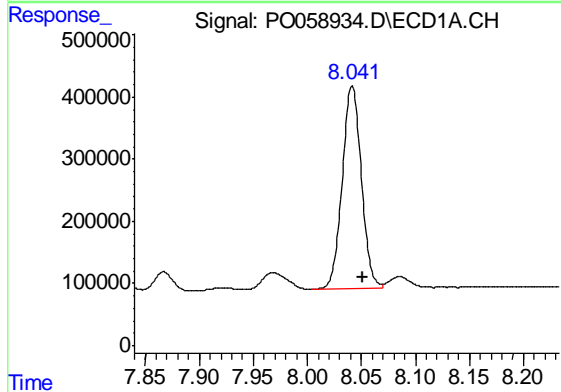
Manual Integrations
 APPROVED

Ankita
 8/7/2019 5:50:45 PM



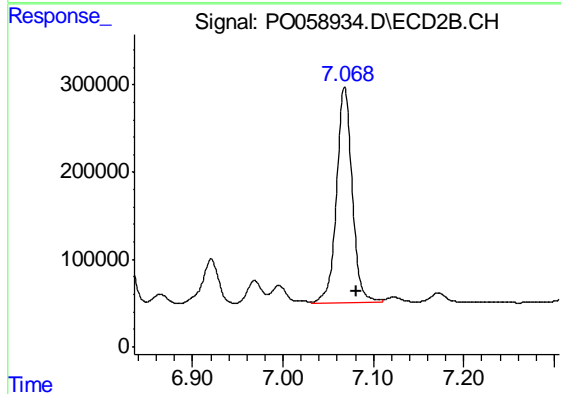
#34 AR-1260-4

R.T.: 6.825 min
 Delta R.T.: -0.014 min
 Response: 1164174
 Conc: 515.23 ng/ml



#35 AR-1260-5

R.T.: 8.041 min
 Delta R.T.: -0.010 min
 Response: 4026884
 Conc: 547.52 ng/ml



#35 AR-1260-5

R.T.: 7.068 min
 Delta R.T.: -0.013 min
 Response: 2979972
 Conc: 553.35 ng/ml