

Data Path : Z:\pestpcbsrv\HPCHEM1\ECD_0\Data\P0080620\
 Data File : P0070345.D
 Signal(s) : Signal #1: ECD1A.CH Signal #2: ECD2B.CH
 Acq On : 06 Aug 2020 23:38
 Operator : DD\AJ
 Sample : L3563-01
 Misc :
 ALS Vial : 30 Sample Multiplier: 1

Instrument :
 ECD_O
 ClientSampleId :
 NB-30860

Integration File signal 1: autoint1.e
 Integration File signal 2: autoint2.e
 Quant Time: Aug 07 05:30:54 2020
 Quant Method : Z:\pestpcbsrv\HPCHEM1\ECD_0\methods\P0080620.M
 Quant Title : GC EXTRACTABLES
 QLast Update : Thu Aug 06 13:04:06 2020
 Response via : Initial Calibration
 Integrator: ChemStation 6890 Scale Mode: Small noise peaks clipped

Volume Inj. : 2 µl
 Signal #1 Phase : ZB-MR1 Signal #2 Phase: ZB-MR2
 Signal #1 Info : 30Mx0.32mmx 0.50µ Signal #2 Info : 30M x 0.32mm x 0.25µm

Compound	RT#1	RT#2	Resp#1	Resp#2	ng/ml	ng/ml

System Monitoring Compounds						
1) SA Tetrachlo...	4.379	3.566	1560334	1113174	23.596	25.265
2) SA Decachlor...	10.044f	0.000	512798	0	5.989	N.D. #
Target Compounds						
3) L1 AR-1016-1	5.703f	4.787	130555	45532	45.216	22.612 #
4) L1 AR-1016-2	5.703	4.787f	130555	45532	31.570	16.023 #
5) L1 AR-1016-3	5.761	0.000	73610	0	29.791	N.D. #
6) L1 AR-1016-4	5.875	5.030f	241688	7446	115.361	5.724 #
7) L1 AR-1016-5	6.175	0.000	126571	0	60.627	N.D. #
8) L2 AR-1221-1	4.605f	3.827	571285	290422	681.379	478.717 #
9) L2 AR-1221-2	0.000	3.906	0	155130	N.D.	350.608 #
10) L2 AR-1221-3	4.826	4.002	1631404	1756483	818.140	1279.896 #
11) L3 AR-1232-1	4.826f	4.002	1631404	1756483	1084.177	1619.220 #
12) L3 AR-1232-2	5.357f	4.787f	299818	45532	364.443	36.675 #
13) L3 AR-1232-3	5.703	0.000	130555	0	73.216	N.D. #
14) L3 AR-1232-4	5.875	5.082	241688	96789	264.903	175.900 #
15) L3 AR-1232-5	5.967	0.000	57967	0	94.793	N.D. #
16) L4 AR-1242-1	5.703f	4.787	130555	45532	55.425	27.815 #
17) L4 AR-1242-2	5.703	4.787f	130555	45532	38.697	19.756 #
18) L4 AR-1242-3	5.761	0.000	73610	0	35.964	N.D. #
19) L4 AR-1242-4	5.875	5.082	241688	96789	139.465	85.329 #
20) L4 AR-1242-5	6.627	5.653	7053028	739024	3424.121	443.051 #
21) L5 AR-1248-1	5.703f	4.787	130555	45532	73.444	38.252 #
22) L5 AR-1248-2	5.967	5.030f	57967	7446	25.559	4.369 #
23) L5 AR-1248-3	6.175	5.082	126571	96789	46.207	61.697 #
24) L5 AR-1248-4	6.627f	0.000	7053028	0	2072.930	N.D. #
25) L5 AR-1248-5	6.627	5.692	7053028	263451	2217.368	127.820 #
26) L6 AR-1254-1	6.578	5.653	101392	739024	28.493	211.030 #
27) L6 AR-1254-2	6.813f	5.826f	512899	32000	92.117	10.275 #
28) L6 AR-1254-3	7.182	6.233f	338375	52351	58.757	10.619 #
29) L6 AR-1254-4	7.486f	6.438f	286809	50610	54.982	14.062 #
30) L6 AR-1254-5	7.907f	6.864	147824	4799547	27.981	1043.495 #
31) L7 AR-1260-1	7.360f	6.372f	58263	980185	14.009	303.552 #
32) L7 AR-1260-2	7.600	6.545	693071	50010	115.426	11.623 #
33) L7 AR-1260-3	7.951	6.715	43555	105003	8.462	28.679 #
34) L7 AR-1260-4	8.181	0.000	5527698	0	1136.767	N.D. #
35) L7 AR-1260-5	8.522f	0.000	79483	0	7.131	N.D. #
36) L8 AR-1262-1	7.951	6.864	43555	4799547	5.686	1898.600 #
37) L8 AR-1262-2	8.522f	0.000	79483	0	6.309	N.D. #
38) L8 AR-1262-3	8.784	7.723	308095	5415661	53.813	1479.938 #
39) L8 AR-1262-4	8.836	7.771	3630687	741534	1148.875	117.593 #
41) L9 AR-1268-1	8.784	7.723	308095	5415661	19.437	482.173 #
42) L9 AR-1268-2	8.836f	7.771	3630687	741534	266.899	76.871 #
43) L9 AR-1268-3	9.028	7.960	624904	39942	53.696	4.967 #

Data Path : Z:\pestpcbsrv\HPCHEM1\ECD_0\Data\P0080620\
 Data File : P0070345.D
 Signal(s) : Signal #1: ECD1A.CH Signal #2: ECD2B.CH
 Acq On : 06 Aug 2020 23:38
 Operator : DD\AJ
 Sample : L3563-01
 Misc :
 ALS Vial : 30 Sample Multiplier: 1

Instrument :
 ECD_0
 ClientSampleId :
 NB-30860

Integration File signal 1: autoint1.e
 Integration File signal 2: autoint2.e
 Quant Time: Aug 07 05:30:54 2020
 Quant Method : Z:\pestpcbsrv\HPCHEM1\ECD_0\methods\P0080620.M
 Quant Title : GC EXTRACTABLES
 QLast Update : Thu Aug 06 13:04:06 2020
 Response via : Initial Calibration
 Integrator: ChemStation 6890 Scale Mode: Small noise peaks clipped

Volume Inj. : 2 µl
 Signal #1 Phase : ZB-MR1 Signal #2 Phase: ZB-MR2
 Signal #1 Info : 30Mx0.32mmx 0.50µ Signal #2 Info : 30M x 0.32mm x 0.25µm

Compound	RT#1	RT#2	Resp#1	Resp#2	ng/ml	ng/ml
45) L9 AR-1268-5	0.000	8.542	0	38128	N.D.	1.742 #

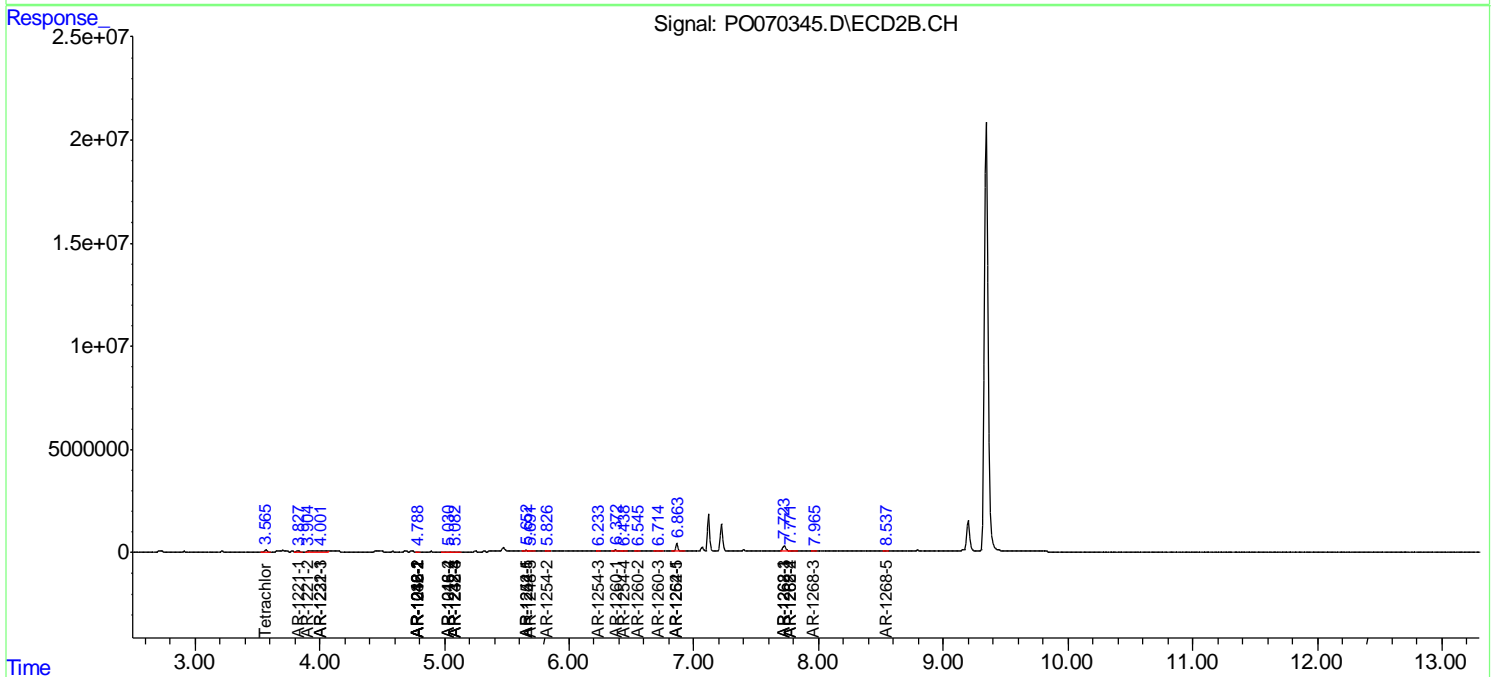
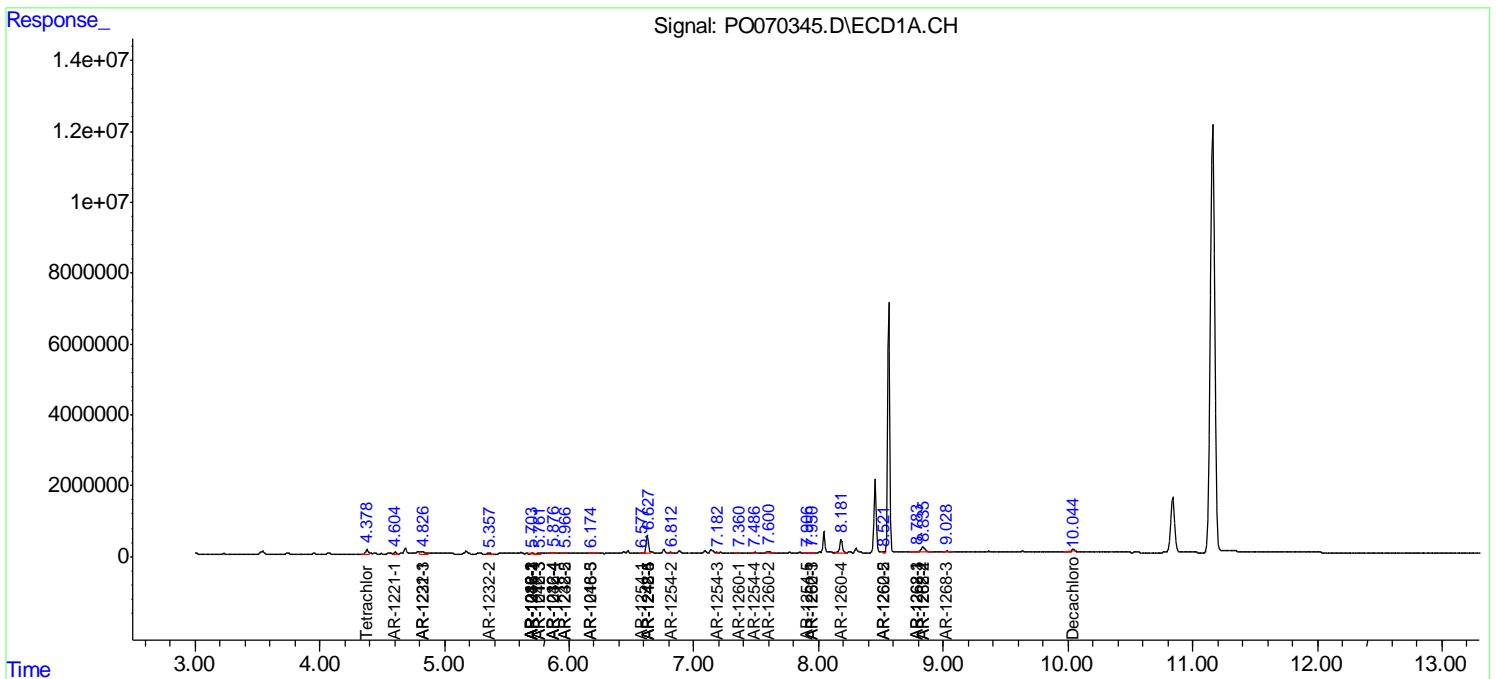
(f)=RT Delta > 1/2 Window (#)=Amounts differ by > 25% (m)=manual int.

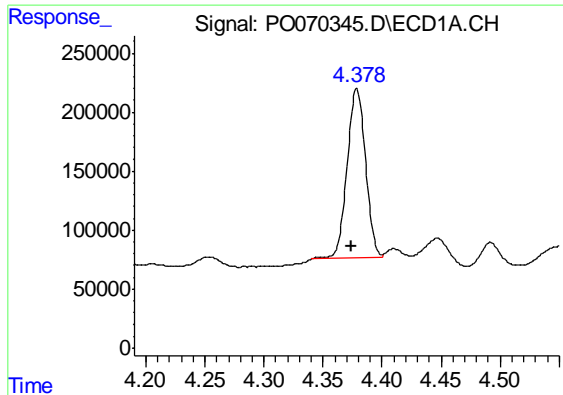
Data Path : Z:\pestpcbsrv\HPCHEM1\ECD_O\Data\PO080620\
 Data File : PO070345.D
 Signal(s) : Signal #1: ECD1A.CH Signal #2: ECD2B.CH
 Acq On : 06 Aug 2020 23:38
 Operator : DD\AJ
 Sample : L3563-01
 Misc :
 ALS Vial : 30 Sample Multiplier: 1

Instrument :
 ECD_O
 Client Sampled :
 NB-30860

Integration File signal 1: autoint1.e
 Integration File signal 2: autoint2.e
 Quant Time: Aug 07 05:30:54 2020
 Quant Method : Z:\pestpcbsrv\HPCHEM1\ECD_O\methods\PO080620.M
 Quant Title : GC EXTRACTABLES
 QLast Update : Thu Aug 06 13:04:06 2020
 Response via : Initial Calibration
 Integrator: ChemStation 6890 Scale Mode: Small noise peaks clipped

Volume Inj. : 2 µl
 Signal #1 Phase : ZB-MR1 Signal #2 Phase: ZB-MR2
 Signal #1 Info : 30Mx0.32mmx 0.50µ Signal #2 Info : 30M x 0.32mm x 0.25µm

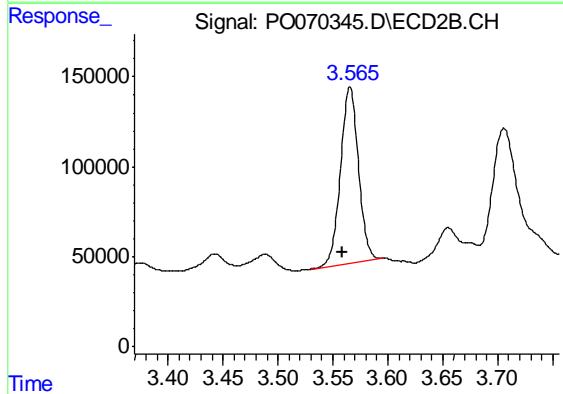




#1 Tetrachloro-m-xylene

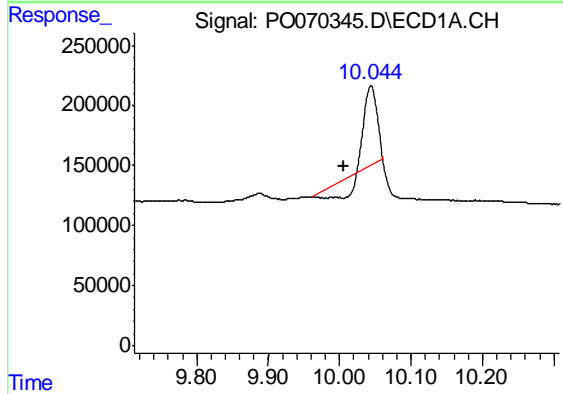
R.T.: 4.379 min
 Delta R.T.: 0.005 min
 Response: 1560334
 Conc: 23.60 ng/ml

Instrument :
 ECD_O
 ClientSampleId :
 NB-30860



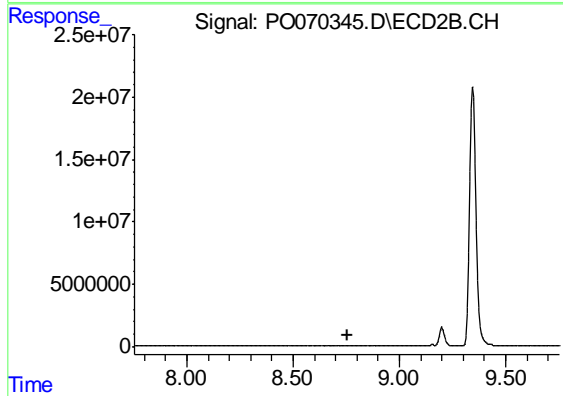
#1 Tetrachloro-m-xylene

R.T.: 3.566 min
 Delta R.T.: 0.007 min
 Response: 1113174
 Conc: 25.27 ng/ml



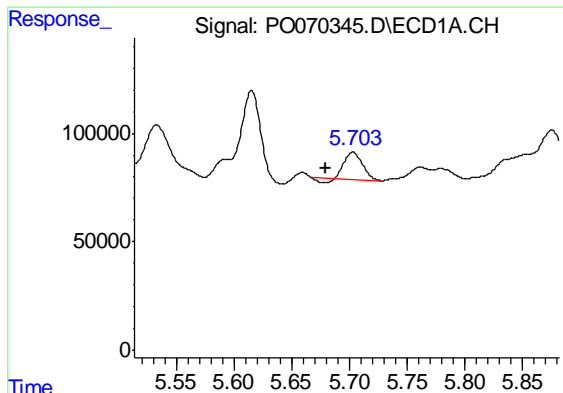
#2 Decachlorobiphenyl

R.T.: 10.044 min
 Delta R.T.: 0.039 min
 Response: 512798
 Conc: 5.99 ng/ml



#2 Decachlorobiphenyl

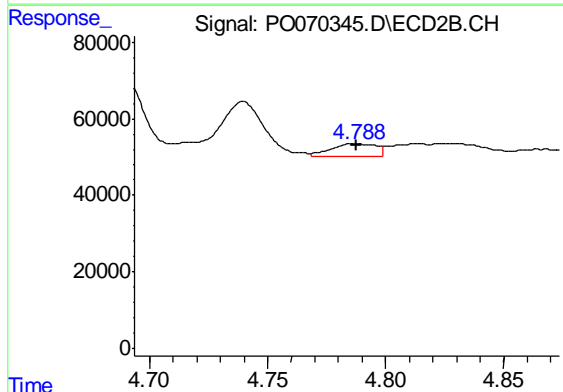
R.T.: 0.000 min
 Exp R.T. : 8.753 min
 Response: 0
 Conc: N.D.



#3 AR-1016-1

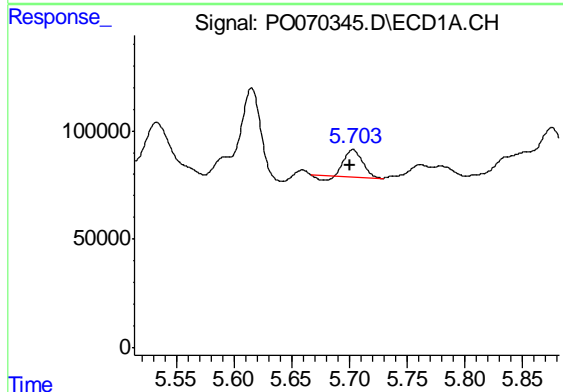
R.T.: 5.703 min
 Delta R.T.: 0.024 min
 Response: 130555
 Conc: 45.22 ng/ml

Instrument :
 ECD_O
 ClientSampleId :
 NB-30860



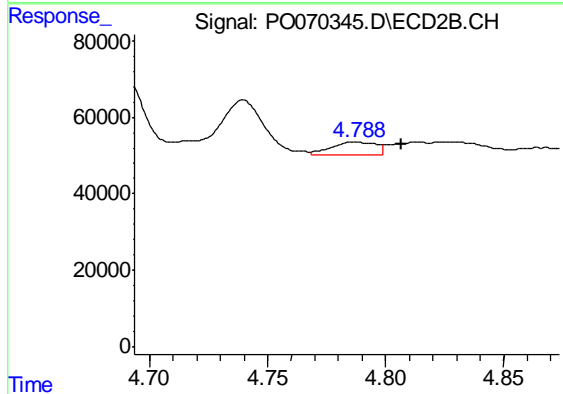
#3 AR-1016-1

R.T.: 4.787 min
 Delta R.T.: 0.000 min
 Response: 45532
 Conc: 22.61 ng/ml



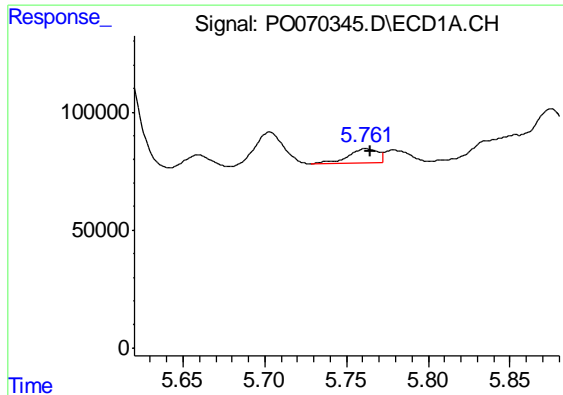
#4 AR-1016-2

R.T.: 5.703 min
 Delta R.T.: 0.002 min
 Response: 130555
 Conc: 31.57 ng/ml



#4 AR-1016-2

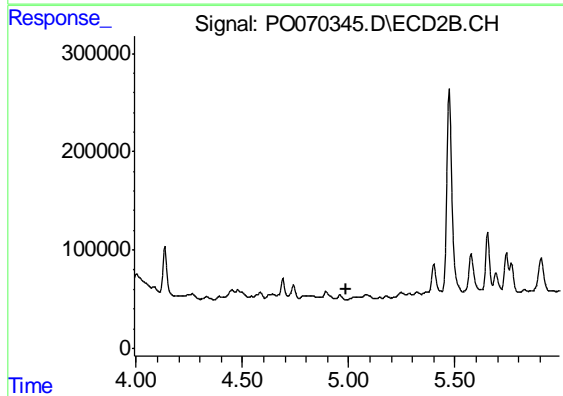
R.T.: 4.787 min
 Delta R.T.: -0.020 min
 Response: 45532
 Conc: 16.02 ng/ml



#5 AR-1016-3

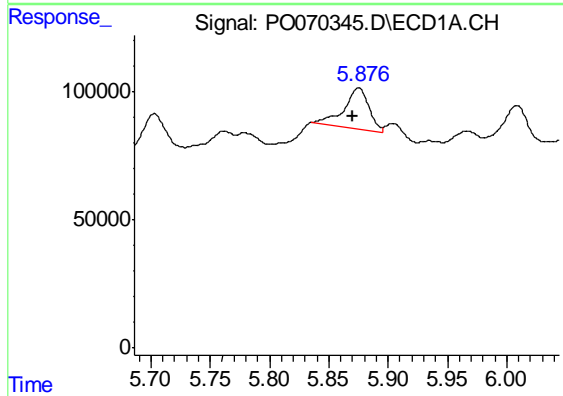
R.T.: 5.761 min
 Delta R.T.: -0.004 min
 Response: 73610
 Conc: 29.79 ng/ml

Instrument :
 ECD_O
 ClientSampled :
 NB-30860



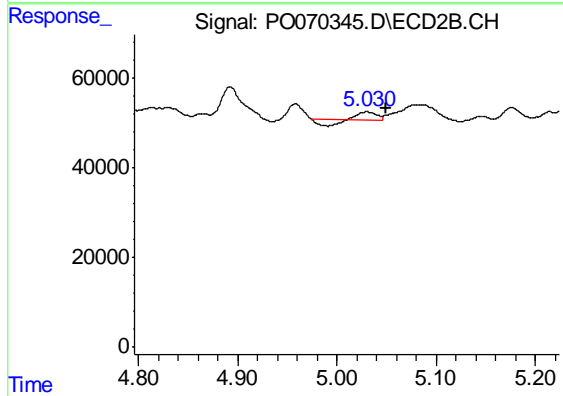
#5 AR-1016-3

R.T.: 0.000 min
 Exp R.T. : 4.991 min
 Response: 0
 Conc: N.D.



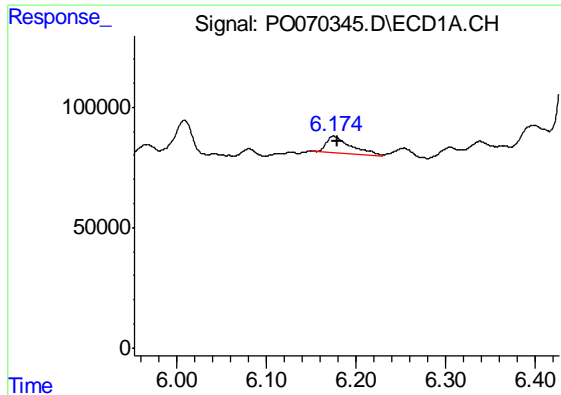
#6 AR-1016-4

R.T.: 5.875 min
 Delta R.T.: 0.005 min
 Response: 241688
 Conc: 115.36 ng/ml



#6 AR-1016-4

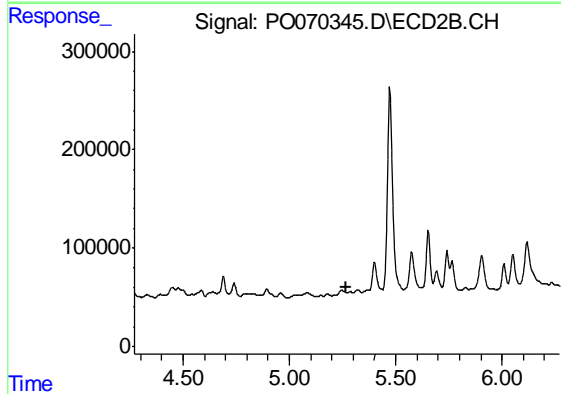
R.T.: 5.030 min
 Delta R.T.: -0.019 min
 Response: 7446
 Conc: 5.72 ng/ml



#7 AR-1016-5

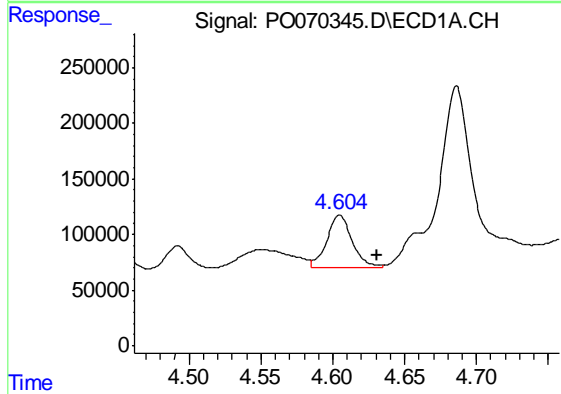
R.T.: 6.175 min
 Delta R.T.: -0.004 min
 Response: 126571
 Conc: 60.63 ng/ml

Instrument :
 ECD_O
 ClientSampled :
 NB-30860



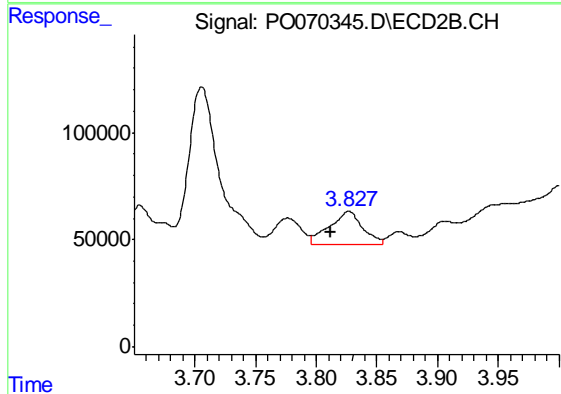
#7 AR-1016-5

R.T.: 0.000 min
 Exp R.T. : 5.270 min
 Response: 0
 Conc: N.D.



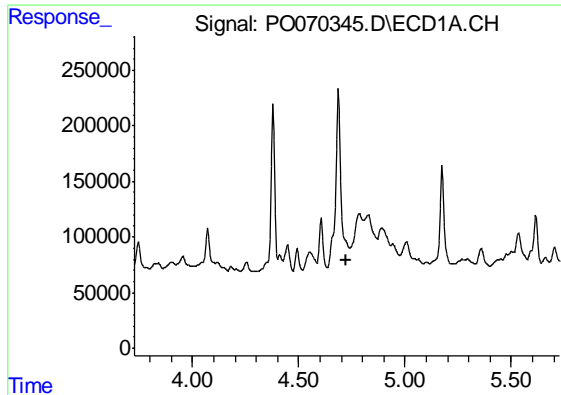
#8 AR-1221-1

R.T.: 4.605 min
 Delta R.T.: -0.026 min
 Response: 571285
 Conc: 681.38 ng/ml



#8 AR-1221-1

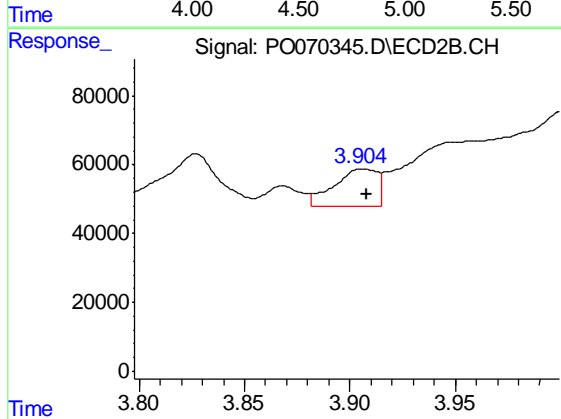
R.T.: 3.827 min
 Delta R.T.: 0.015 min
 Response: 290422
 Conc: 478.72 ng/ml



#9 AR-1221-2

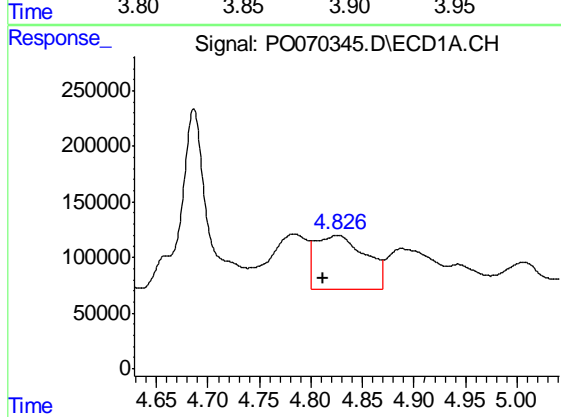
R.T.: 0.000 min
 Exp R.T. : 4.726 min
 Response: 0
 Conc: N.D.

Instrument :
 ECD_O
 ClientSampleId :
 NB-30860



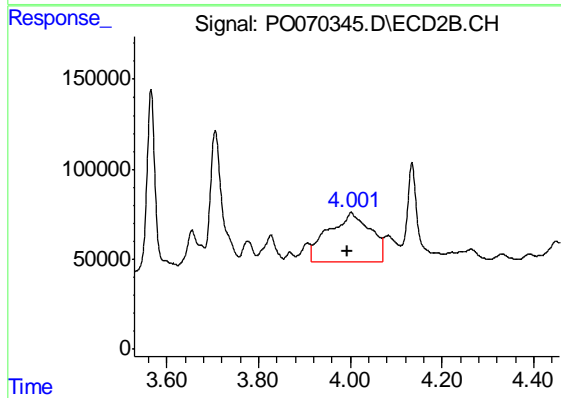
#9 AR-1221-2

R.T.: 3.906 min
 Delta R.T.: -0.002 min
 Response: 155130
 Conc: 350.61 ng/ml



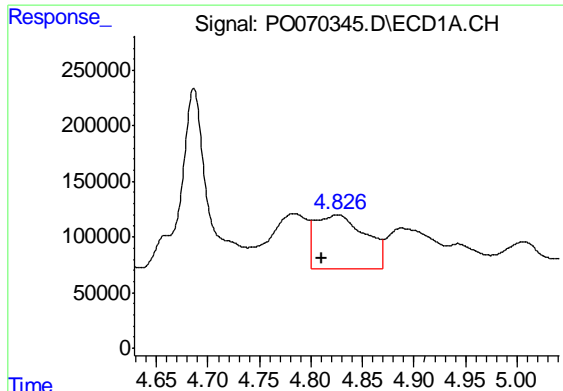
#10 AR-1221-3

R.T.: 4.826 min
 Delta R.T.: 0.014 min
 Response: 1631404
 Conc: 818.14 ng/ml



#10 AR-1221-3

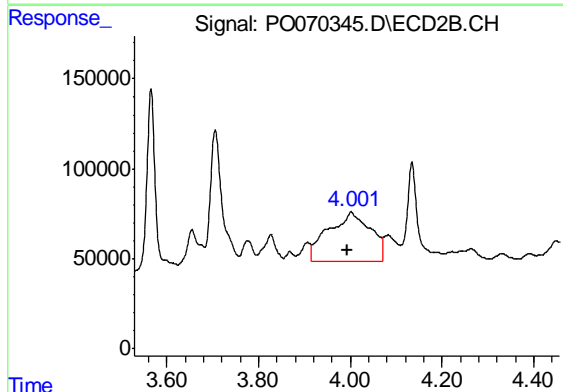
R.T.: 4.002 min
 Delta R.T.: 0.009 min
 Response: 1756483
 Conc: 1279.90 ng/ml



#11 AR-1232-1

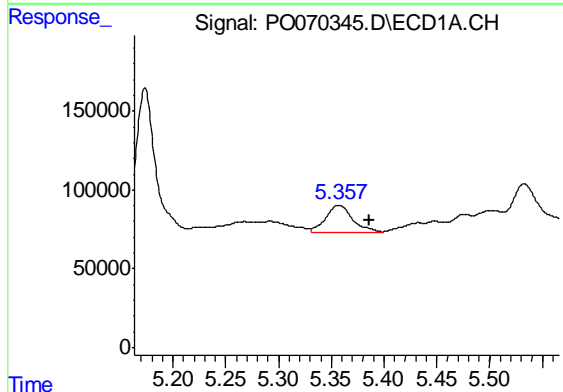
R.T.: 4.826 min
 Delta R.T.: 0.015 min
 Response: 1631404
 Conc: 1084.18 ng/ml

Instrument :
 ECD_O
 ClientSampleId :
 NB-30860



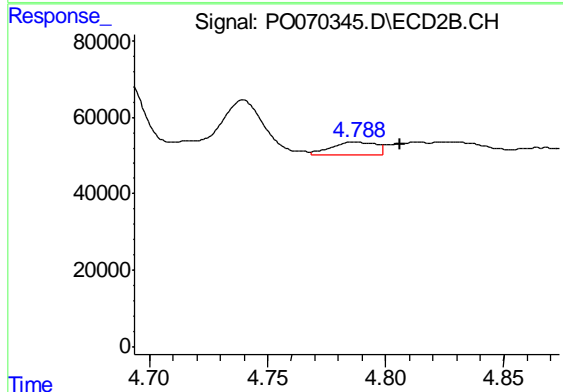
#11 AR-1232-1

R.T.: 4.002 min
 Delta R.T.: 0.009 min
 Response: 1756483
 Conc: 1619.22 ng/ml



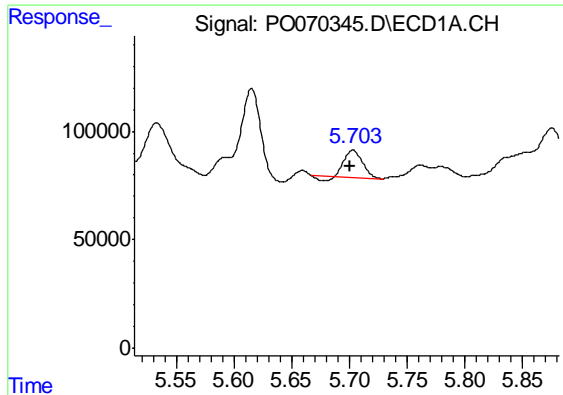
#12 AR-1232-2

R.T.: 5.357 min
 Delta R.T.: -0.029 min
 Response: 299818
 Conc: 364.44 ng/ml



#12 AR-1232-2

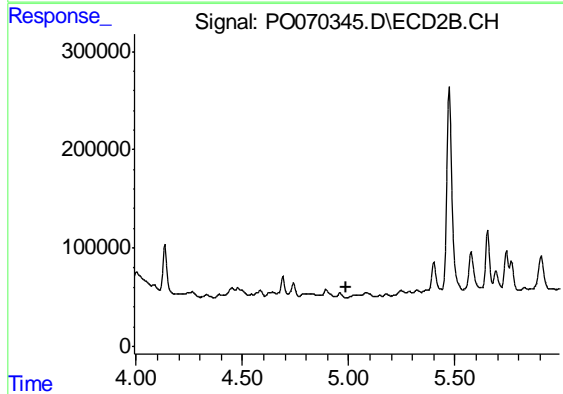
R.T.: 4.787 min
 Delta R.T.: -0.019 min
 Response: 45532
 Conc: 36.67 ng/ml



#13 AR-1232-3

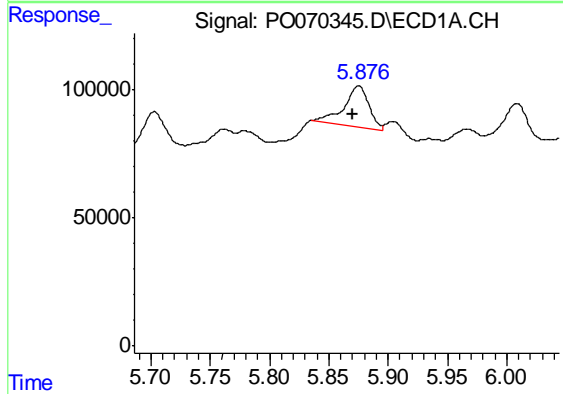
R.T.: 5.703 min
 Delta R.T.: 0.002 min
 Response: 130555
 Conc: 73.22 ng/ml

Instrument :
 ECD_O
 ClientSampleId :
 NB-30860



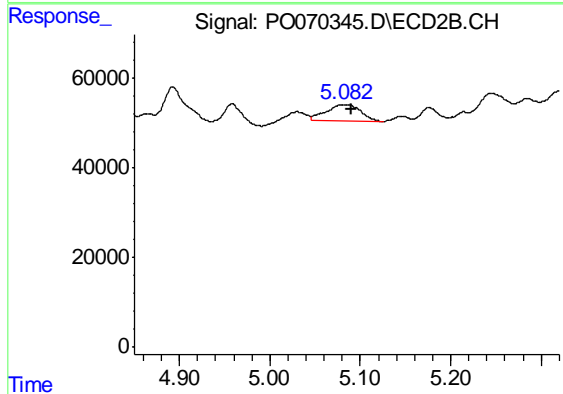
#13 AR-1232-3

R.T.: 0.000 min
 Exp R.T. : 4.991 min
 Response: 0
 Conc: N.D.



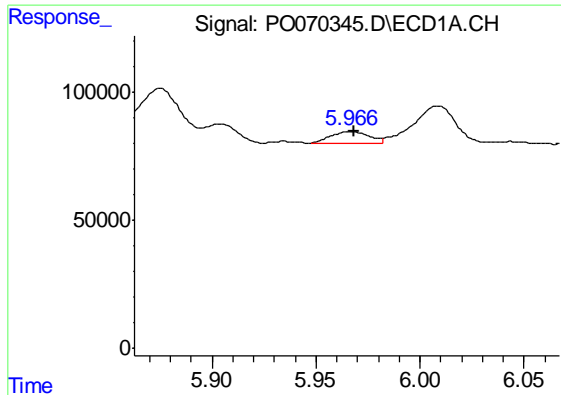
#14 AR-1232-4

R.T.: 5.875 min
 Delta R.T.: 0.005 min
 Response: 241688
 Conc: 264.90 ng/ml



#14 AR-1232-4

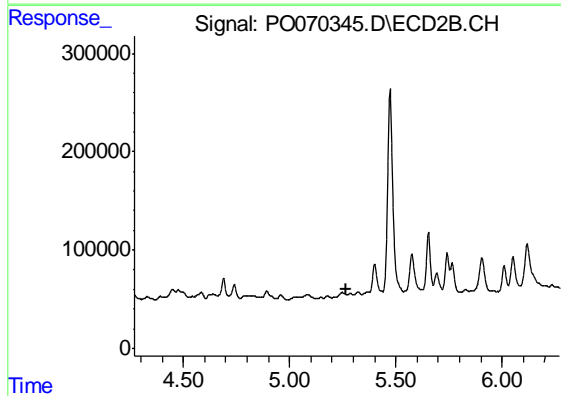
R.T.: 5.082 min
 Delta R.T.: -0.008 min
 Response: 96789
 Conc: 175.90 ng/ml



#15 AR-1232-5

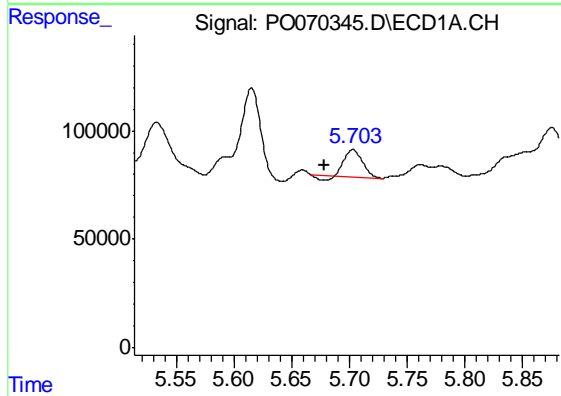
R.T.: 5.967 min
 Delta R.T.: -0.001 min
 Response: 57967
 Conc: 94.79 ng/ml

Instrument :
 ECD_O
 ClientSampled :
 NB-30860



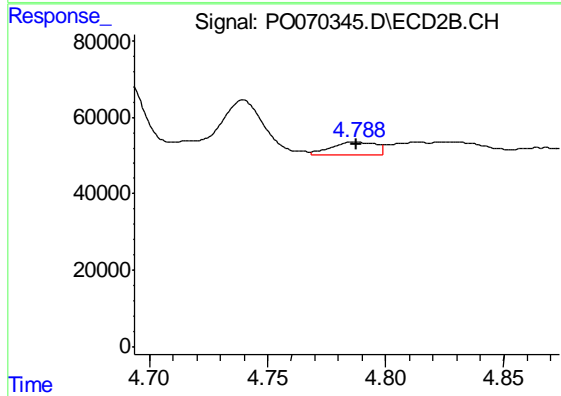
#15 AR-1232-5

R.T.: 0.000 min
 Exp R.T. : 5.270 min
 Response: 0
 Conc: N.D.



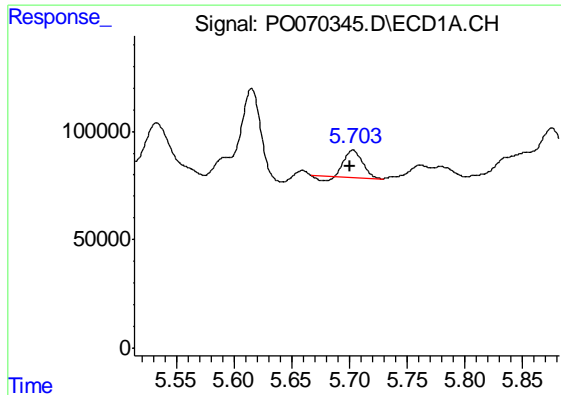
#16 AR-1242-1

R.T.: 5.703 min
 Delta R.T.: 0.025 min
 Response: 130555
 Conc: 55.42 ng/ml



#16 AR-1242-1

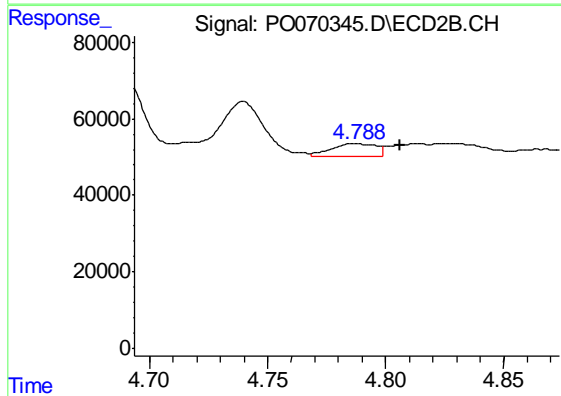
R.T.: 4.787 min
 Delta R.T.: 0.000 min
 Response: 45532
 Conc: 27.82 ng/ml



#17 AR-1242-2

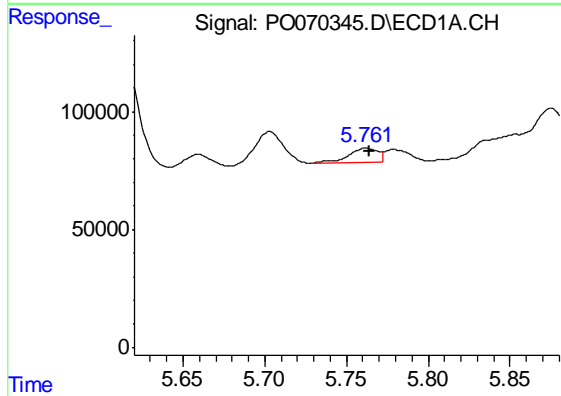
R.T.: 5.703 min
 Delta R.T.: 0.003 min
 Response: 130555
 Conc: 38.70 ng/ml

Instrument :
 ECD_O
 ClientSampleId :
 NB-30860



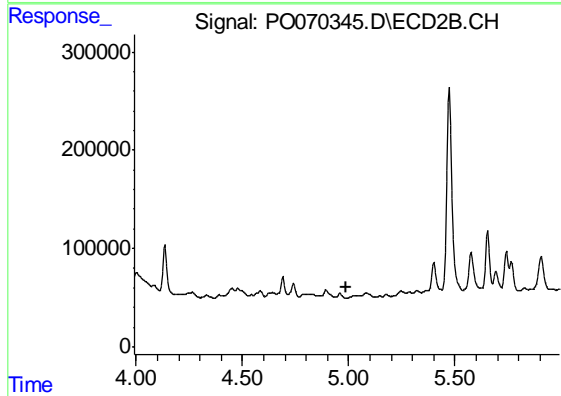
#17 AR-1242-2

R.T.: 4.787 min
 Delta R.T.: -0.019 min
 Response: 45532
 Conc: 19.76 ng/ml



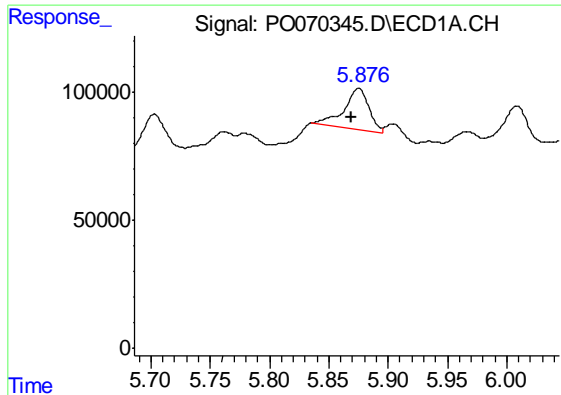
#18 AR-1242-3

R.T.: 5.761 min
 Delta R.T.: -0.002 min
 Response: 73610
 Conc: 35.96 ng/ml



#18 AR-1242-3

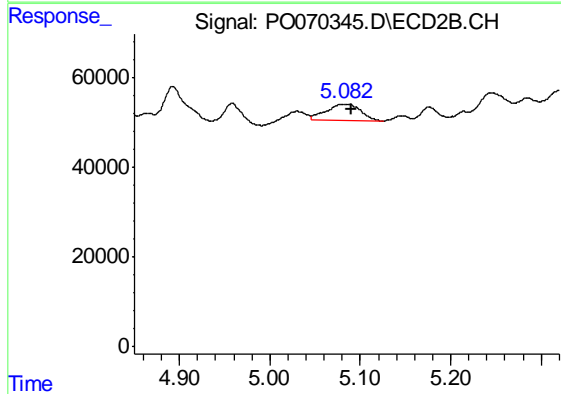
R.T.: 0.000 min
 Exp R.T. : 4.991 min
 Response: 0
 Conc: N.D.



#19 AR-1242-4

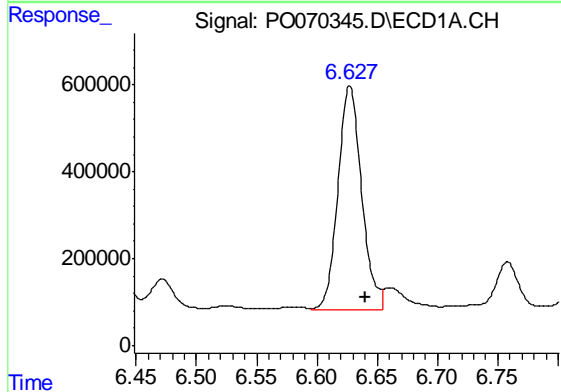
R.T.: 5.875 min
 Delta R.T.: 0.006 min
 Response: 241688
 Conc: 139.47 ng/ml

Instrument :
 ECD_O
 ClientSampleId :
 NB-30860



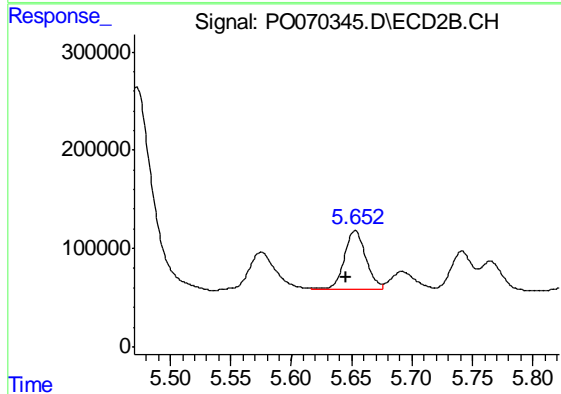
#19 AR-1242-4

R.T.: 5.082 min
 Delta R.T.: -0.008 min
 Response: 96789
 Conc: 85.33 ng/ml



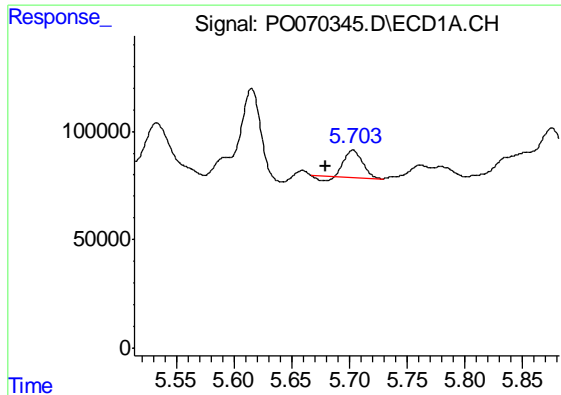
#20 AR-1242-5

R.T.: 6.627 min
 Delta R.T.: -0.014 min
 Response: 7053028
 Conc: 3424.12 ng/ml



#20 AR-1242-5

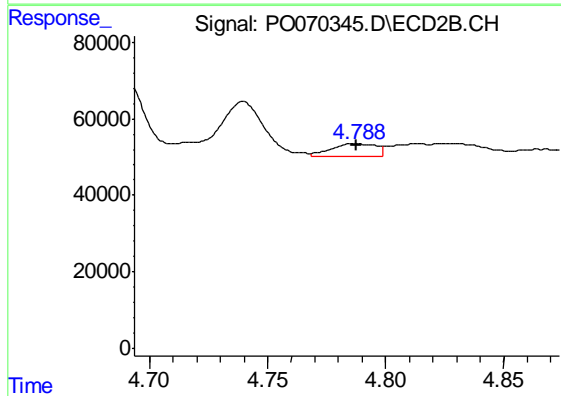
R.T.: 5.653 min
 Delta R.T.: 0.008 min
 Response: 739024
 Conc: 443.05 ng/ml



#21 AR-1248-1

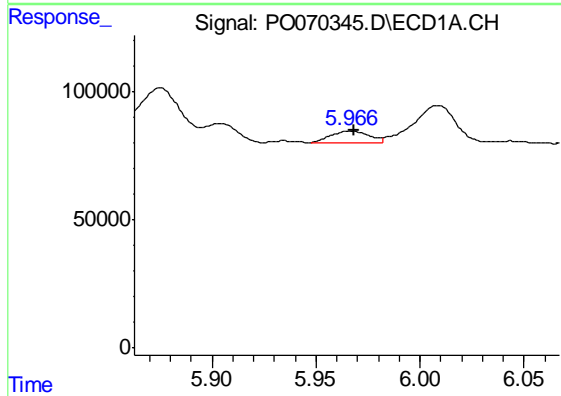
R.T.: 5.703 min
 Delta R.T.: 0.024 min
 Response: 130555
 Conc: 73.44 ng/ml

Instrument :
 ECD_O
 ClientSampleId :
 NB-30860



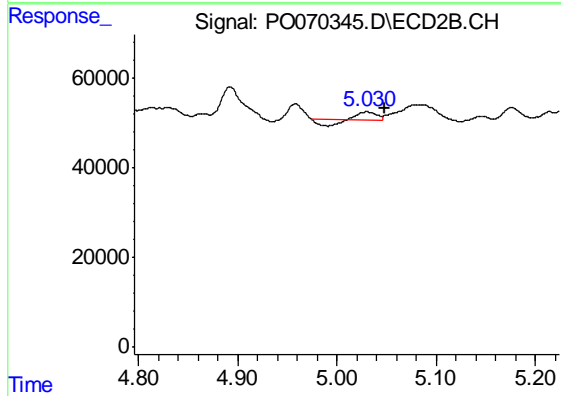
#21 AR-1248-1

R.T.: 4.787 min
 Delta R.T.: 0.000 min
 Response: 45532
 Conc: 38.25 ng/ml



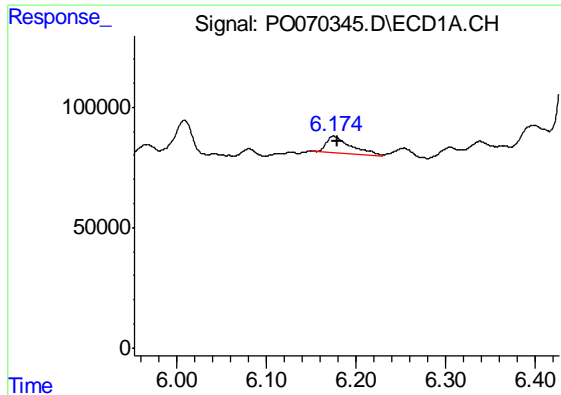
#22 AR-1248-2

R.T.: 5.967 min
 Delta R.T.: -0.001 min
 Response: 57967
 Conc: 25.56 ng/ml



#22 AR-1248-2

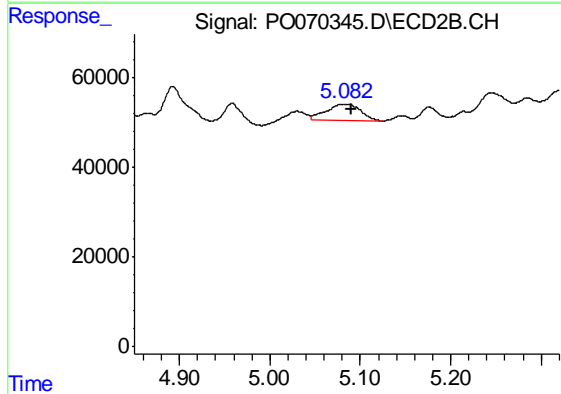
R.T.: 5.030 min
 Delta R.T.: -0.018 min
 Response: 7446
 Conc: 4.37 ng/ml



#23 AR-1248-3

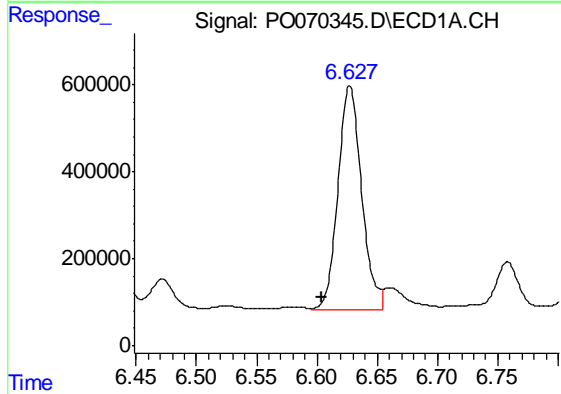
R.T.: 6.175 min
 Delta R.T.: -0.005 min
 Response: 126571
 Conc: 46.21 ng/ml

Instrument :
 ECD_O
 ClientSampleId :
 NB-30860



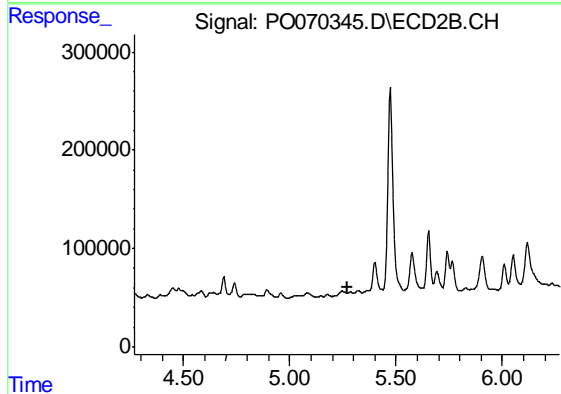
#23 AR-1248-3

R.T.: 5.082 min
 Delta R.T.: -0.008 min
 Response: 96789
 Conc: 61.70 ng/ml



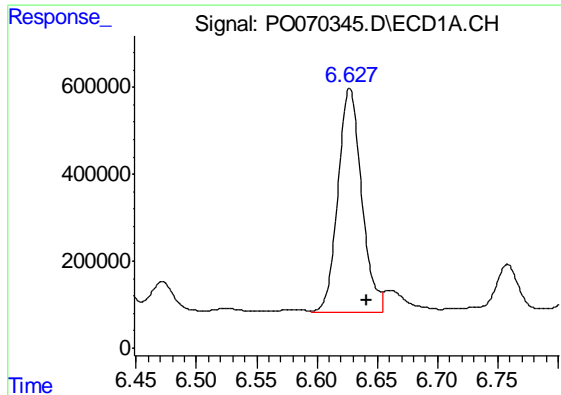
#24 AR-1248-4

R.T.: 6.627 min
 Delta R.T.: 0.023 min
 Response: 7053028
 Conc: 2072.93 ng/ml



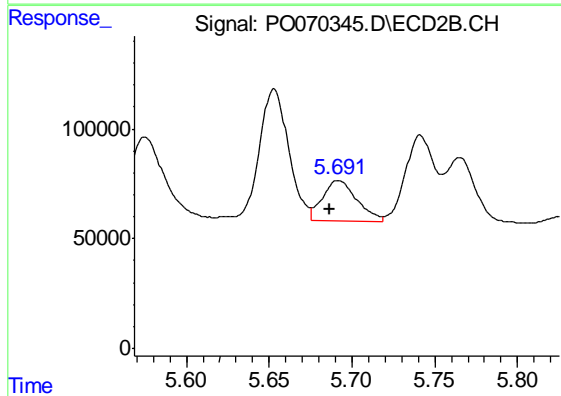
#24 AR-1248-4

R.T.: 0.000 min
 Exp R.T. : 5.269 min
 Response: 0
 Conc: N.D.

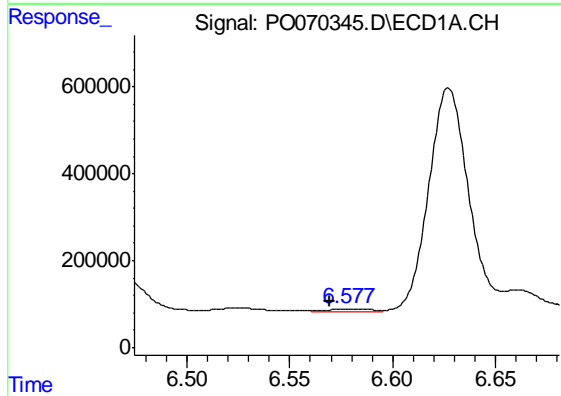


#25 AR-1248-5
 R.T.: 6.627 min
 Delta R.T.: -0.014 min
 Response: 7053028
 Conc: 2217.37 ng/ml

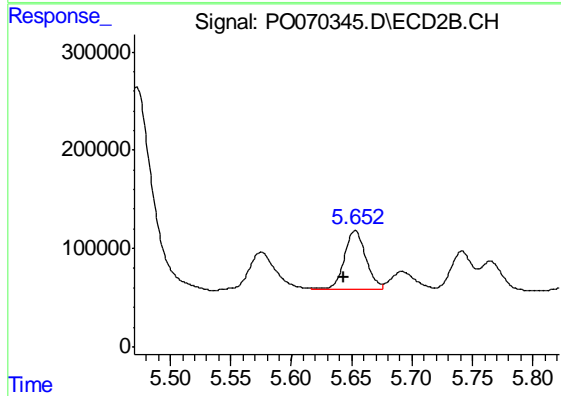
Instrument :
 ECD_O
 ClientSampleId :
 NB-30860



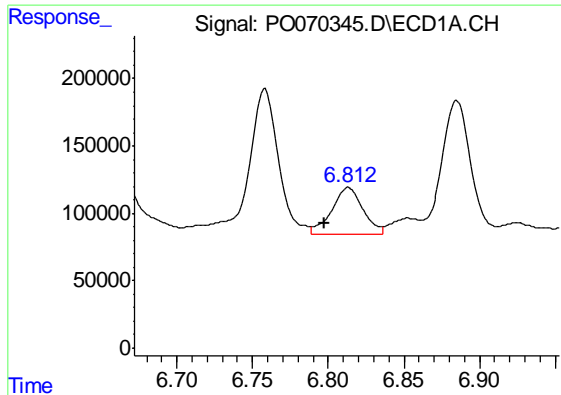
#25 AR-1248-5
 R.T.: 5.692 min
 Delta R.T.: 0.005 min
 Response: 263451
 Conc: 127.82 ng/ml



#26 AR-1254-1
 R.T.: 6.578 min
 Delta R.T.: 0.009 min
 Response: 101392
 Conc: 28.49 ng/ml



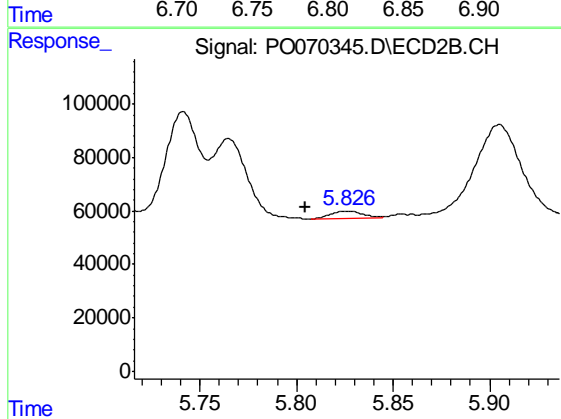
#26 AR-1254-1
 R.T.: 5.653 min
 Delta R.T.: 0.009 min
 Response: 739024
 Conc: 211.03 ng/ml



#27 AR-1254-2

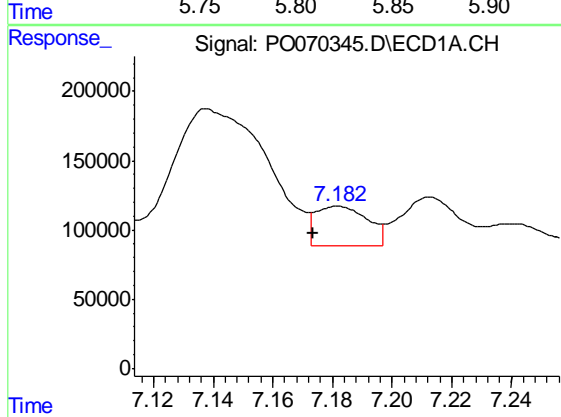
R.T.: 6.813 min
 Delta R.T.: 0.015 min
 Response: 512899
 Conc: 92.12 ng/ml

Instrument :
 ECD_O
 ClientSampleId :
 NB-30860



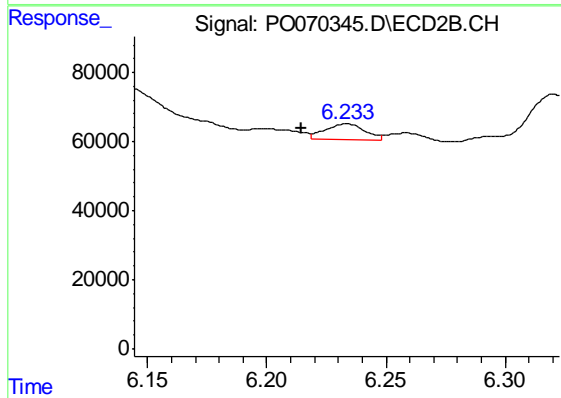
#27 AR-1254-2

R.T.: 5.826 min
 Delta R.T.: 0.022 min
 Response: 32000
 Conc: 10.28 ng/ml



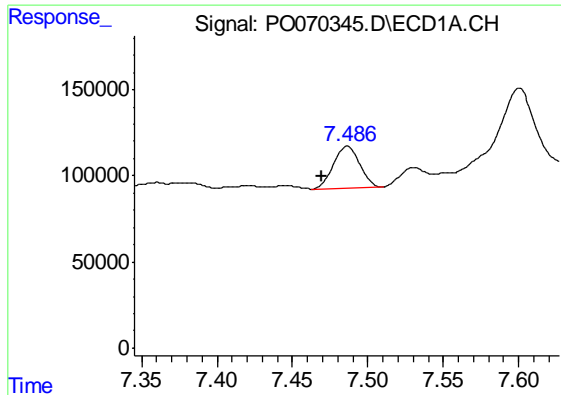
#28 AR-1254-3

R.T.: 7.182 min
 Delta R.T.: 0.008 min
 Response: 338375
 Conc: 58.76 ng/ml



#28 AR-1254-3

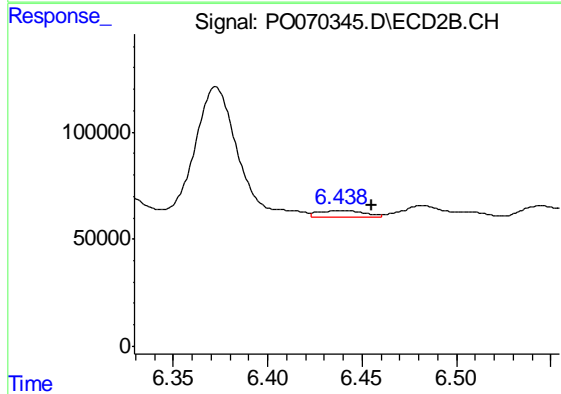
R.T.: 6.233 min
 Delta R.T.: 0.019 min
 Response: 52351
 Conc: 10.62 ng/ml



#29 AR-1254-4

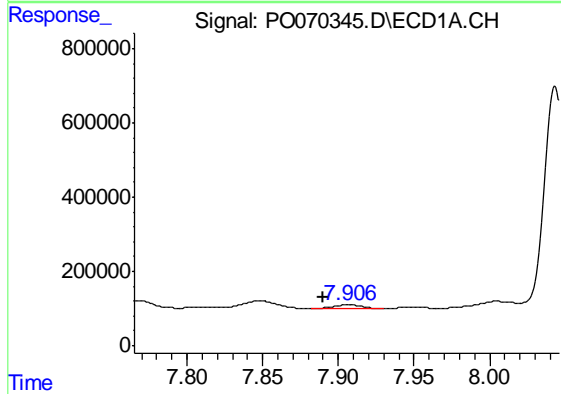
R.T.: 7.486 min
 Delta R.T.: 0.017 min
 Response: 286809
 Conc: 54.98 ng/ml

Instrument :
 ECD_O
 ClientSampled :
 NB-30860



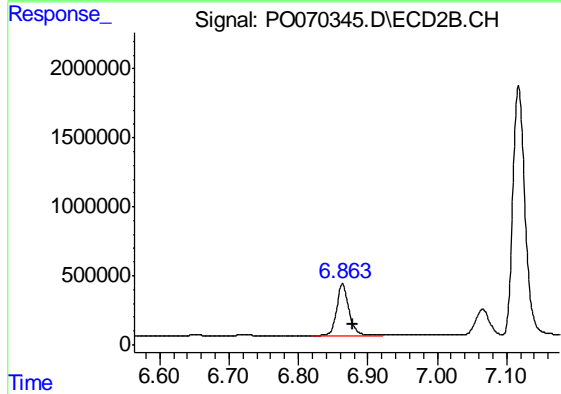
#29 AR-1254-4

R.T.: 6.438 min
 Delta R.T.: -0.017 min
 Response: 50610
 Conc: 14.06 ng/ml



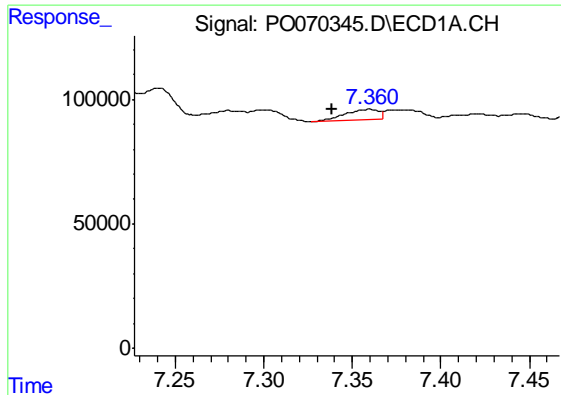
#30 AR-1254-5

R.T.: 7.907 min
 Delta R.T.: 0.017 min
 Response: 147824
 Conc: 27.98 ng/ml



#30 AR-1254-5

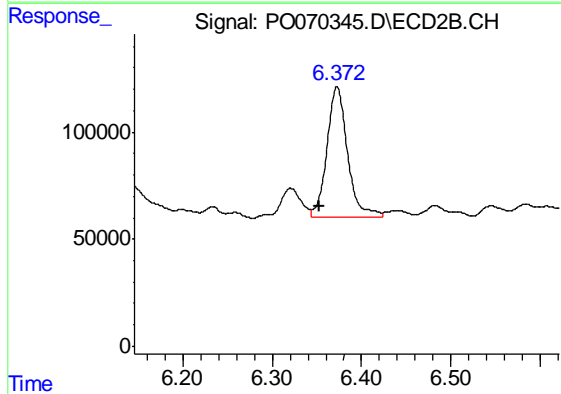
R.T.: 6.864 min
 Delta R.T.: -0.014 min
 Response: 4799547
 Conc: 1043.50 ng/ml



#31 AR-1260-1

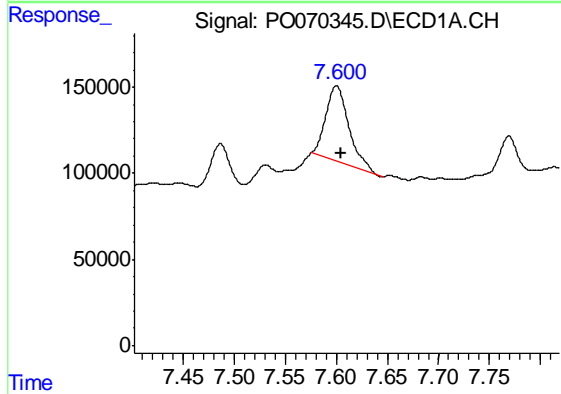
R.T.: 7.360 min
 Delta R.T.: 0.021 min
 Response: 58263
 Conc: 14.01 ng/ml

Instrument :
 ECD_O
 ClientSampleId :
 NB-30860



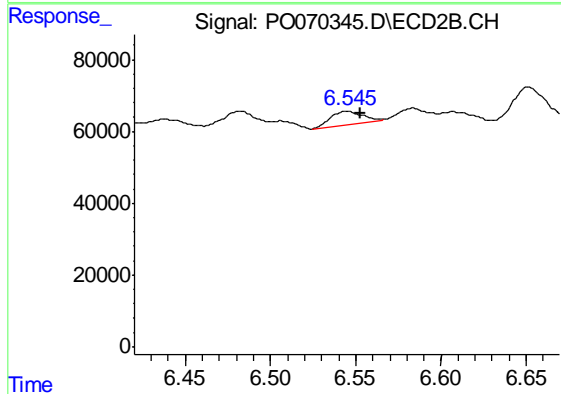
#31 AR-1260-1

R.T.: 6.372 min
 Delta R.T.: 0.020 min
 Response: 980185
 Conc: 303.55 ng/ml



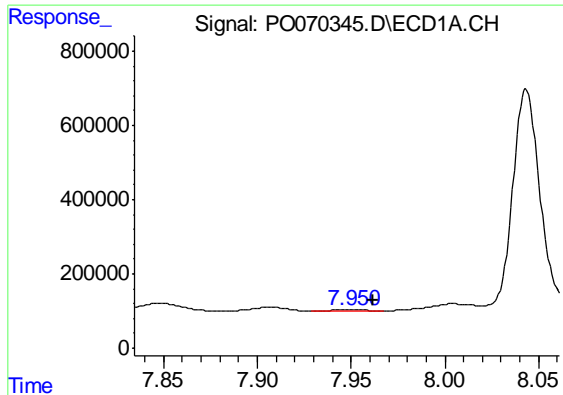
#32 AR-1260-2

R.T.: 7.600 min
 Delta R.T.: -0.004 min
 Response: 693071
 Conc: 115.43 ng/ml



#32 AR-1260-2

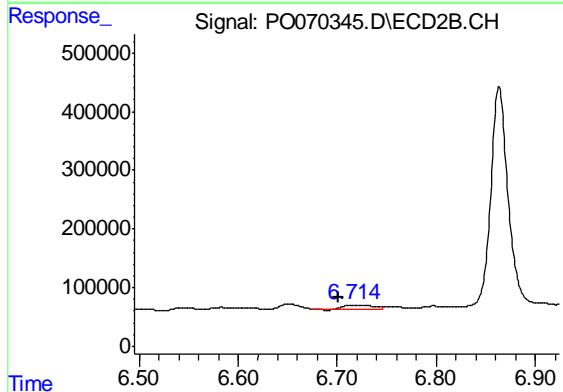
R.T.: 6.545 min
 Delta R.T.: -0.008 min
 Response: 50010
 Conc: 11.62 ng/ml



#33 AR-1260-3

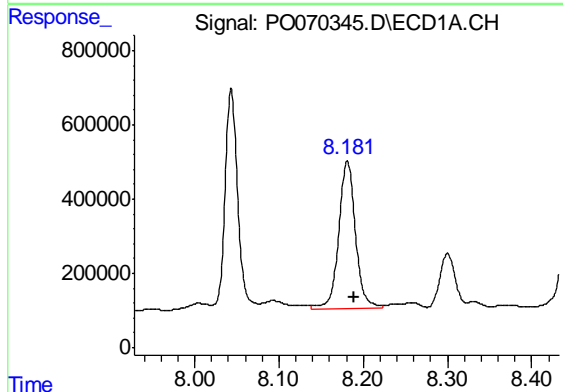
R.T.: 7.951 min
 Delta R.T.: -0.011 min
 Response: 43555
 Conc: 8.46 ng/ml

Instrument :
 ECD_O
 ClientSampleId :
 NB-30860



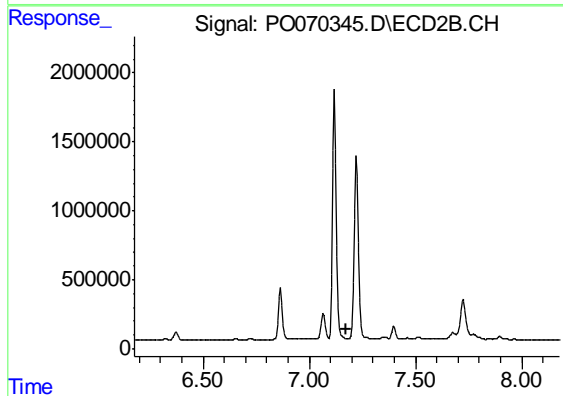
#33 AR-1260-3

R.T.: 6.715 min
 Delta R.T.: 0.014 min
 Response: 105003
 Conc: 28.68 ng/ml



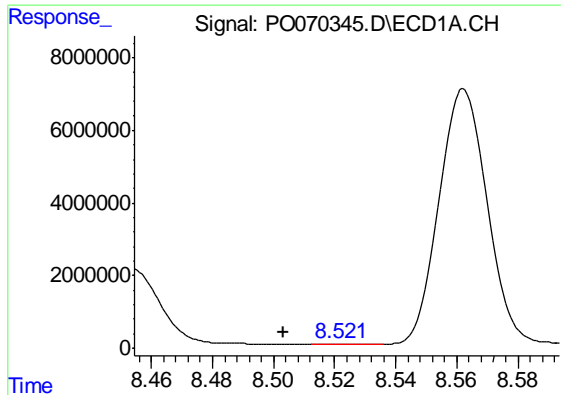
#34 AR-1260-4

R.T.: 8.181 min
 Delta R.T.: -0.008 min
 Response: 5527698
 Conc: 1136.77 ng/ml



#34 AR-1260-4

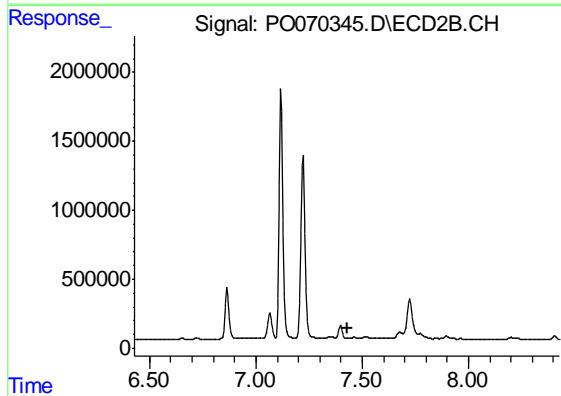
R.T.: 0.000 min
 Exp R.T. : 7.177 min
 Response: 0
 Conc: N.D.



#35 AR-1260-5

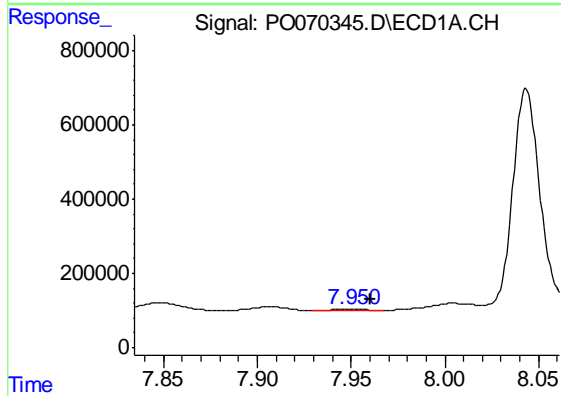
R.T.: 8.522 min
 Delta R.T.: 0.019 min
 Response: 79483
 Conc: 7.13 ng/ml

Instrument :
 ECD_O
 ClientSampled :
 NB-30860



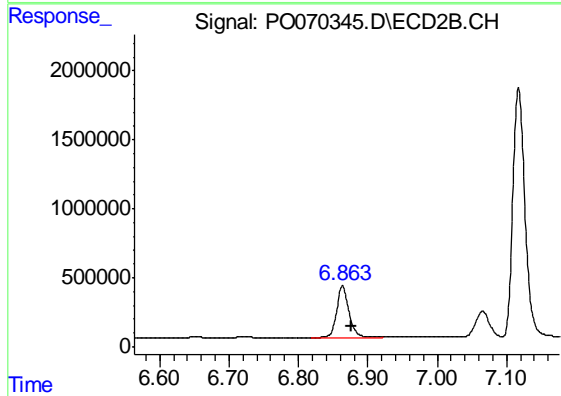
#35 AR-1260-5

R.T.: 0.000 min
 Exp R.T. : 7.429 min
 Response: 0
 Conc: N.D.



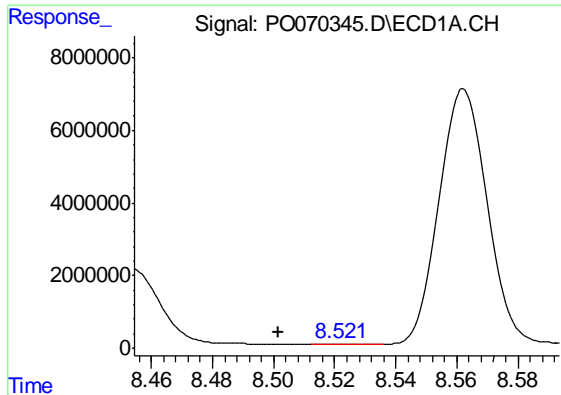
#36 AR-1262-1

R.T.: 7.951 min
 Delta R.T.: -0.010 min
 Response: 43555
 Conc: 5.69 ng/ml



#36 AR-1262-1

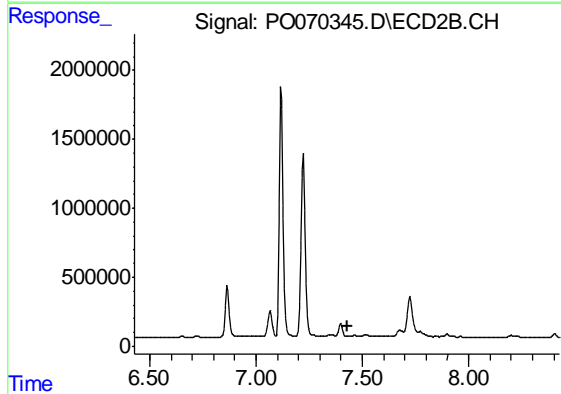
R.T.: 6.864 min
 Delta R.T.: -0.013 min
 Response: 4799547
 Conc: 1898.60 ng/ml



#37 AR-1262-2

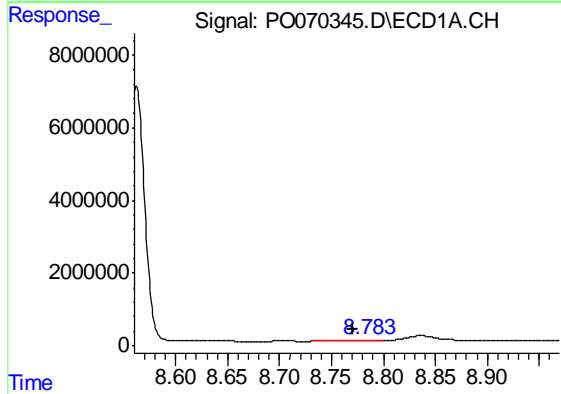
R.T.: 8.522 min
 Delta R.T.: 0.020 min
 Response: 79483
 Conc: 6.31 ng/ml

Instrument :
 ECD_O
 ClientSampled :
 NB-30860



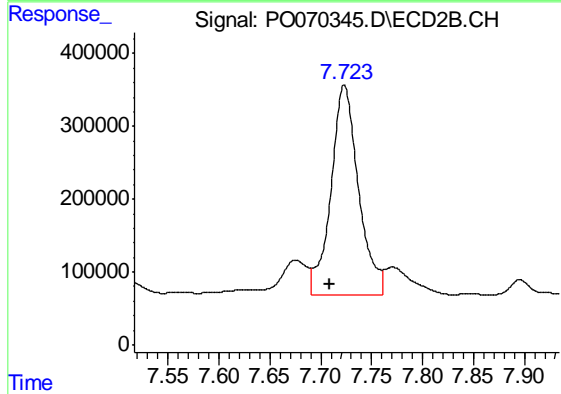
#37 AR-1262-2

R.T.: 0.000 min
 Exp R.T. : 7.428 min
 Response: 0
 Conc: N.D.



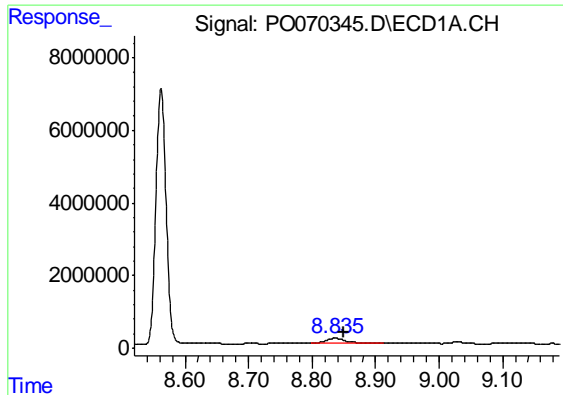
#38 AR-1262-3

R.T.: 8.784 min
 Delta R.T.: 0.014 min
 Response: 308095
 Conc: 53.81 ng/ml



#38 AR-1262-3

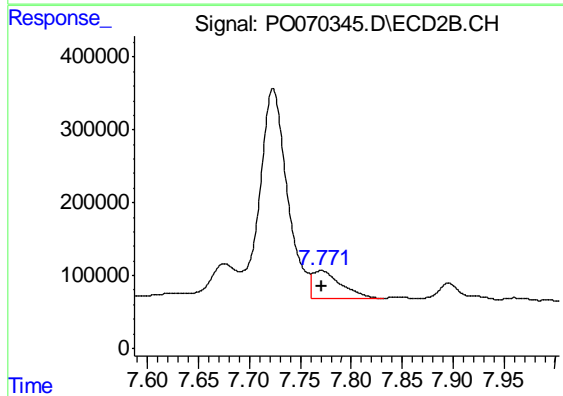
R.T.: 7.723 min
 Delta R.T.: 0.014 min
 Response: 5415661
 Conc: 1479.94 ng/ml



#39 AR-1262-4

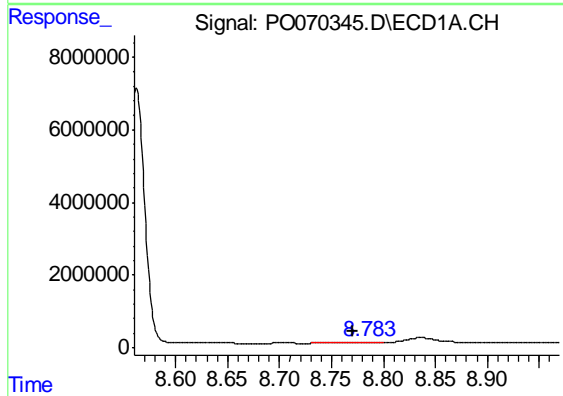
R.T.: 8.836 min
 Delta R.T.: -0.014 min
 Response: 3630687
 Conc: 1148.87 ng/ml

Instrument :
 ECD_O
 ClientSampleId :
 NB-30860



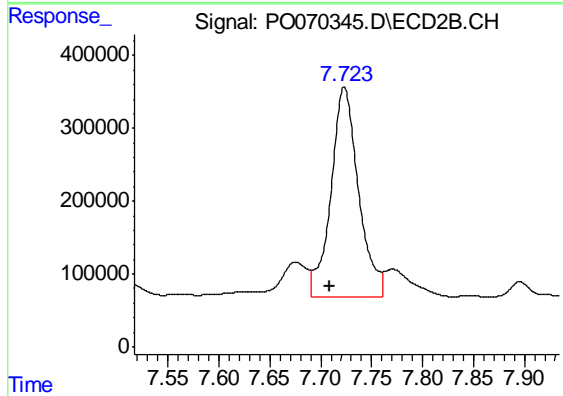
#39 AR-1262-4

R.T.: 7.771 min
 Delta R.T.: -0.001 min
 Response: 741534
 Conc: 117.59 ng/ml



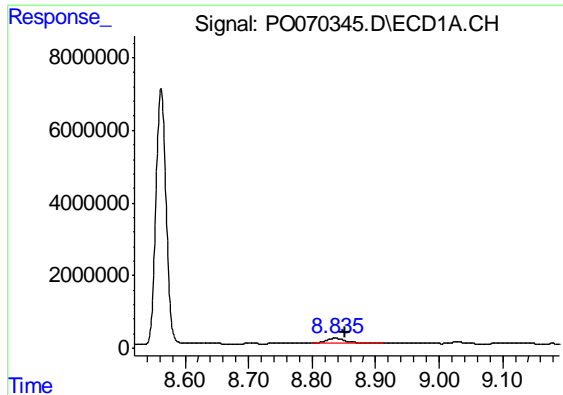
#41 AR-1268-1

R.T.: 8.784 min
 Delta R.T.: 0.014 min
 Response: 308095
 Conc: 19.44 ng/ml



#41 AR-1268-1

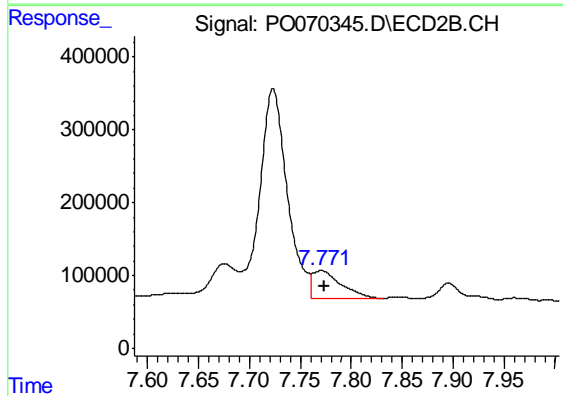
R.T.: 7.723 min
 Delta R.T.: 0.014 min
 Response: 5415661
 Conc: 482.17 ng/ml



#42 AR-1268-2

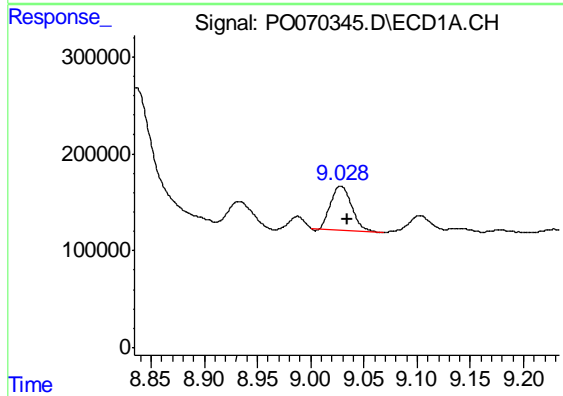
R.T.: 8.836 min
 Delta R.T.: -0.015 min
 Response: 3630687
 Conc: 266.90 ng/ml

Instrument :
 ECD_O
 ClientSampleId :
 NB-30860



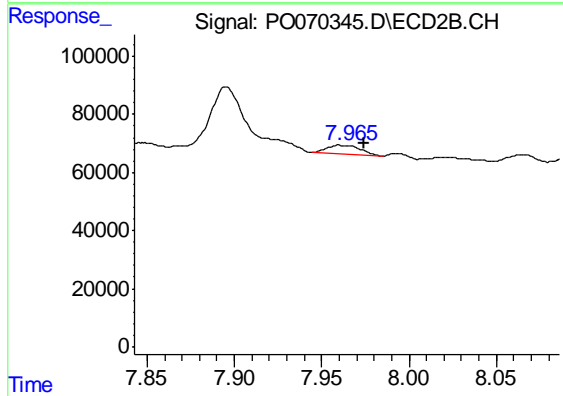
#42 AR-1268-2

R.T.: 7.771 min
 Delta R.T.: -0.003 min
 Response: 741534
 Conc: 76.87 ng/ml



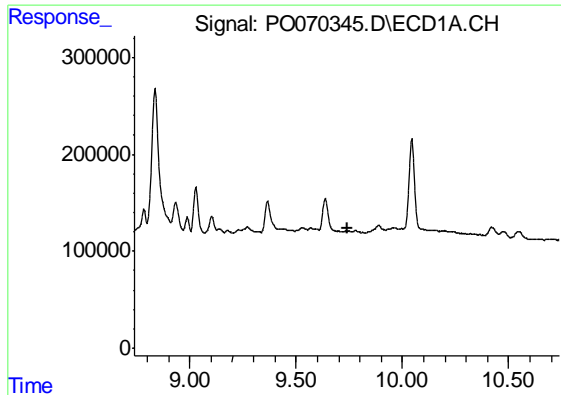
#43 AR-1268-3

R.T.: 9.028 min
 Delta R.T.: -0.006 min
 Response: 624904
 Conc: 53.70 ng/ml



#43 AR-1268-3

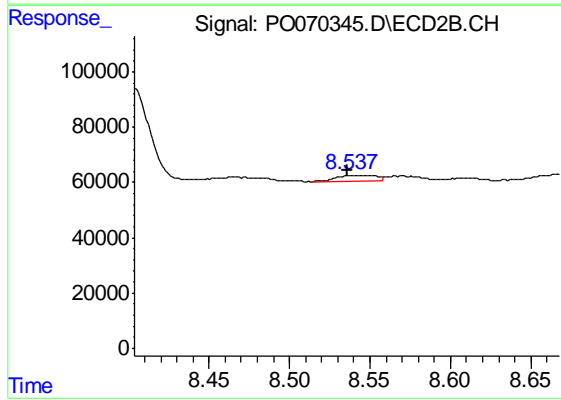
R.T.: 7.960 min
 Delta R.T.: -0.015 min
 Response: 39942
 Conc: 4.97 ng/ml



#45 AR-1268-5

R.T.: 0.000 min
 Exp R.T. : 9.739 min
 Response: 0
 Conc: N.D.

Instrument :
 ECD_O
 ClientSampleId :
 NB-30860



#45 AR-1268-5

R.T.: 8.542 min
 Delta R.T.: 0.006 min
 Response: 38128
 Conc: 1.74 ng/ml