

Data Path : Z:\pestpcbsrv\HPCHEM1\ECD_0\Data\P0080620\
 Data File : P0070351.D
 Signal(s) : Signal #1: ECD1A.CH Signal #2: ECD2B.CH
 Acq On : 07 Aug 2020 1:20
 Operator : DD\AJ
 Sample : L3563-05
 Misc :
 ALS Vial : 36 Sample Multiplier: 1

Instrument :
 ECD_0
 ClientSampleId :
 NWM-COMP

Integration File signal 1: autoint1.e
 Integration File signal 2: autoint2.e
 Quant Time: Aug 07 05:34:23 2020
 Quant Method : Z:\pestpcbsrv\HPCHEM1\ECD_0\methods\P0080620.M
 Quant Title : GC EXTRACTABLES
 QLast Update : Thu Aug 06 13:04:06 2020
 Response via : Initial Calibration
 Integrator: ChemStation 6890 Scale Mode: Small noise peaks clipped

Volume Inj. : 2 µl
 Signal #1 Phase : ZB-MR1 Signal #2 Phase: ZB-MR2
 Signal #1 Info : 30Mx0.32mmx 0.50µ Signal #2 Info : 30M x 0.32mm x 0.25µm

Compound	RT#1	RT#2	Resp#1	Resp#2	ng/ml	ng/ml

System Monitoring Compounds						
1) SA Tetrachlo...	4.373	3.559	1655900	1025385	25.042	23.273
2) SA Decachlor...	10.002	8.752	1484727	943708	17.340	17.001

Target Compounds

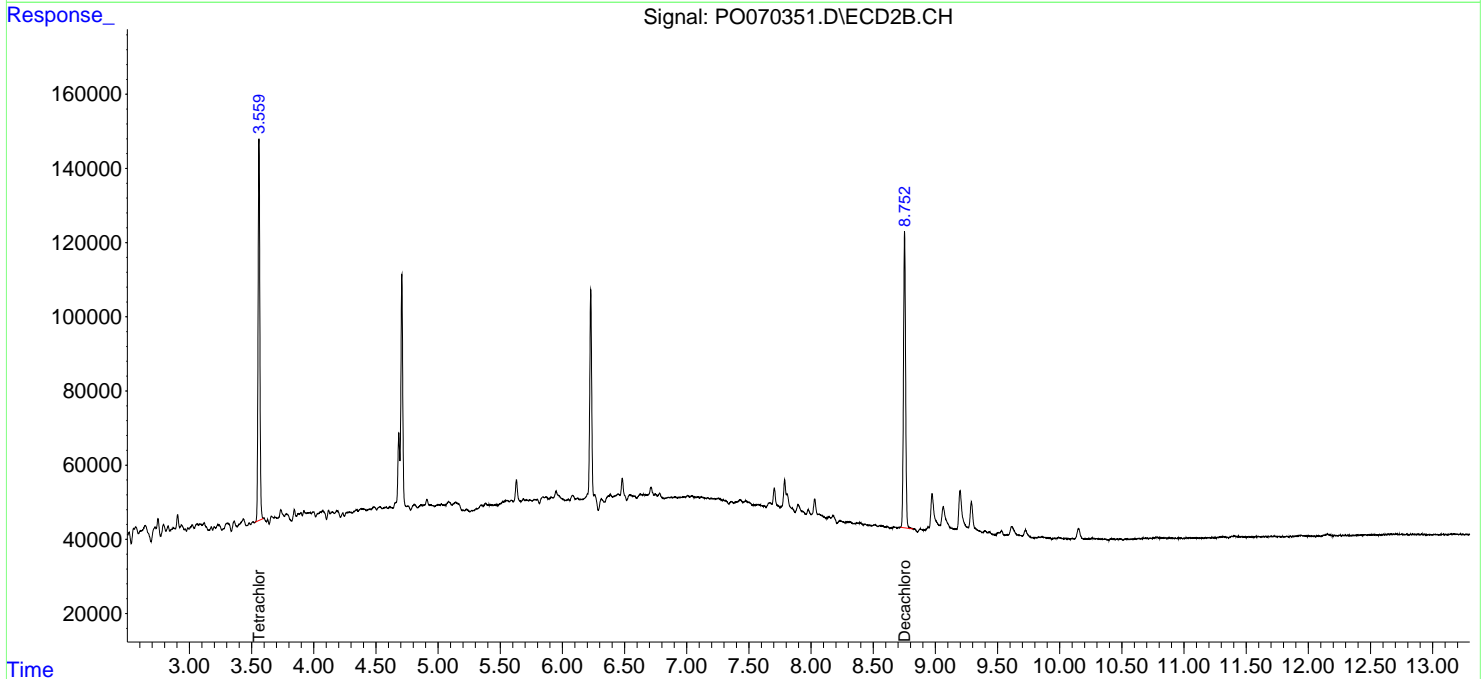
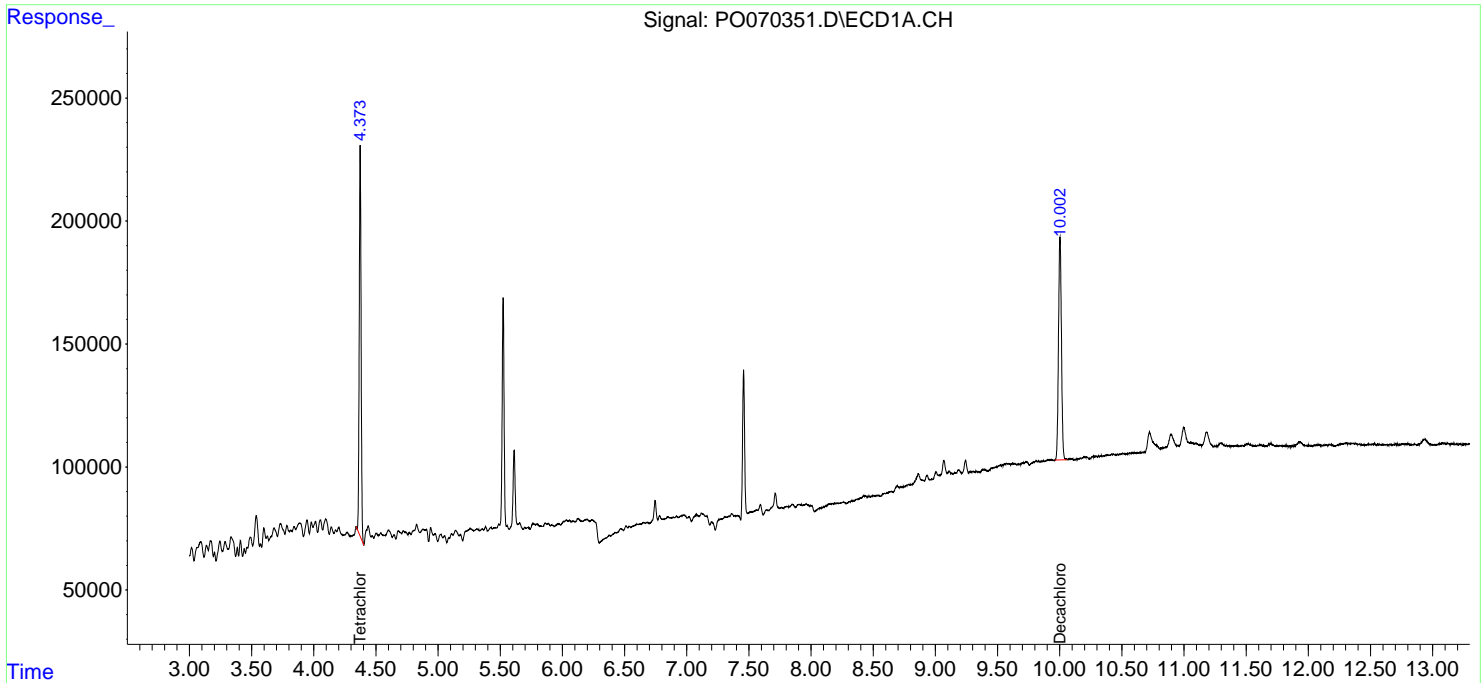
(f)=RT Delta > 1/2 Window (#)=Amounts differ by > 25% (m)=manual int.

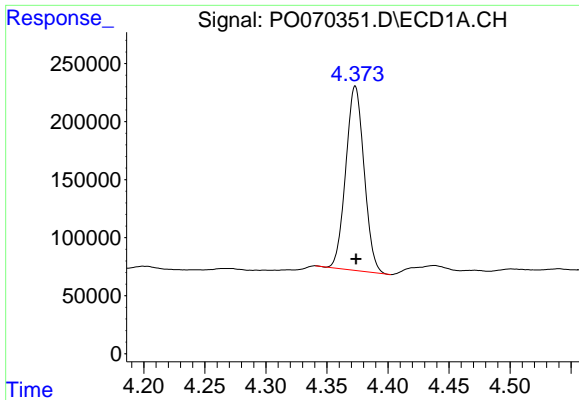
Data Path : Z:\pestpcbsrv\HPCHEM1\ECD_O\Data\P0080620\
 Data File : P0070351.D
 Signal(s) : Signal #1: ECD1A.CH Signal #2: ECD2B.CH
 Acq On : 07 Aug 2020 1:20
 Operator : DD\AJ
 Sample : L3563-05
 Misc :
 ALS Vial : 36 Sample Multiplier: 1

Instrument :
 ECD_O
ClientSampled :
 NWM-COMP

Integration File signal 1: autoint1.e
 Integration File signal 2: autoint2.e
 Quant Time: Aug 07 05:34:23 2020
 Quant Method : Z:\pestpcbsrv\HPCHEM1\ECD_O\methods\P0080620.M
 Quant Title : GC EXTRACTABLES
 QLast Update : Thu Aug 06 13:04:06 2020
 Response via : Initial Calibration
 Integrator: ChemStation 6890 Scale Mode: Small noise peaks clipped

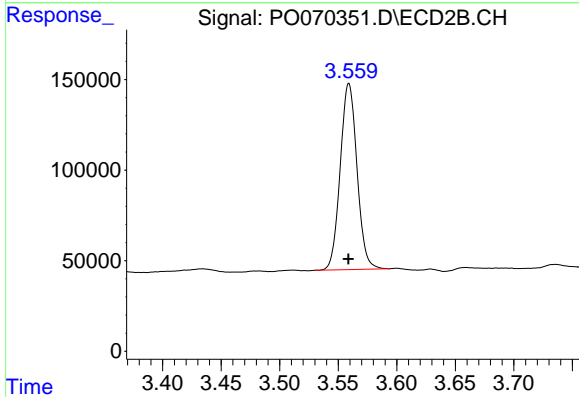
Volume Inj. : 2 µl
 Signal #1 Phase : ZB-MR1 Signal #2 Phase: ZB-MR2
 Signal #1 Info : 30Mx0.32mmx 0.50µ Signal #2 Info : 30M x 0.32mm x 0.25µm



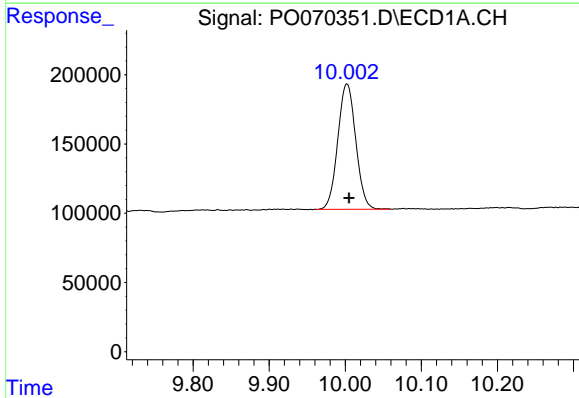


#1 Tetrachloro-m-xylene
 R.T.: 4.373 min
 Delta R.T.: 0.000 min
 Response: 1655900
 Conc: 25.04 ng/ml

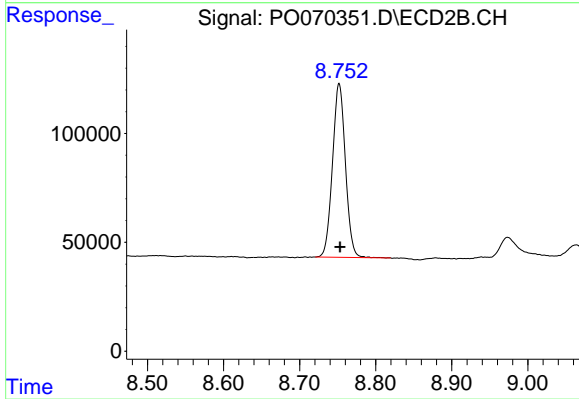
Instrument :
 ECD_O
 ClientSampled :
 NWM-COMP



#1 Tetrachloro-m-xylene
 R.T.: 3.559 min
 Delta R.T.: 0.000 min
 Response: 1025385
 Conc: 23.27 ng/ml



#2 Decachlorobiphenyl
 R.T.: 10.002 min
 Delta R.T.: -0.003 min
 Response: 1484727
 Conc: 17.34 ng/ml



#2 Decachlorobiphenyl
 R.T.: 8.752 min
 Delta R.T.: -0.001 min
 Response: 943708
 Conc: 17.00 ng/ml