

Data Path : Z:\pestpcbsrv\HPCHEM1\ECD\_0\Data\P0080621\  
 Data File : P0080273.D  
 Signal(s) : Signal #1: ECD1A.CH Signal #2: ECD2B.CH  
 Acq On : 06 Aug 2021 18:02  
 Operator : DD\AJ  
 Sample : M3279-09MS  
 Misc :  
 ALS Vial : 28 Sample Multiplier: 1

Instrument :  
 ECD\_O  
 ClientSampled :

Integration File signal 1: autoint1.e  
 Integration File signal 2: autoint2.e  
 Quant Time: Aug 09 01:35:45 2021  
 Quant Method : Z:\pestpcbsrv\HPCHEM1\ECD\_0\methods\P0072821.M  
 Quant Title : GC EXTRACTABLES  
 QLast Update : Wed Jul 28 18:45:36 2021  
 Response via : Initial Calibration  
 Integrator: ChemStation 6890 Scale Mode: Small noise peaks clipped

Volume Inj. : 2 µl  
 Signal #1 Phase : ZB-MR1 Signal #2 Phase: ZB-MR2  
 Signal #1 Info : 30Mx0.32mmx 0.50µ Signal #2 Info : 30M x 0.32mm x 0.25µm

Compound	RT#1	RT#2	Resp#1	Resp#2	ng/ml	ng/ml
System Monitoring Compounds						
1) SA Tetrachlo...	4.995	4.114	1521310	560357	25.247	24.469
2) SA Decachlor...	11.100	9.516	965329	470731	20.578	22.651
Target Compounds						
3) L1 AR-1016-1	6.326	5.390	1252612	537853	569.825	572.232
4) L1 AR-1016-2	6.350	5.410	1758692	731140	576.425	574.698
5) L1 AR-1016-3	6.416	5.606	1046797	396239	556.270	562.026
6) L1 AR-1016-4	6.523	5.656	864116	326772	560.428	540.775
7) L1 AR-1016-5	6.840	5.890	860858	398592	569.006	541.235
8) L2 AR-1221-1	5.242	4.375	120303	49011	186.697	169.724
9) L2 AR-1221-2	5.348	4.477	147347	65319	320.896	304.558
10) L2 AR-1221-3	5.436	4.568	674912	278073	437.386	428.321
11) L3 AR-1232-1	5.436	4.568	674912	278073	473.602	461.144
12) L3 AR-1232-2	6.029	5.410	948144	731140	1357.312	1300.165
13) L3 AR-1232-3	6.350	5.606	1758692	396239	1319.568	1316.136
14) L3 AR-1232-4	6.523	5.702	864116	399934	1326.852	1404.905
15) L3 AR-1232-5	6.622	5.890	756570	398592	1694.236	1327.259
16) L4 AR-1242-1	6.326	5.390	1252612	537853	751.558	755.218
17) L4 AR-1242-2	6.350	5.410	1758692	731140	764.709	755.026
18) L4 AR-1242-3	6.416	5.606	1046797	396239	737.394	738.480
19) L4 AR-1242-4	6.523	5.702	864116	399934	761.498	712.235
20) L4 AR-1242-5	7.310	6.274	137694	329829	108.456	506.889 #
21) L5 AR-1248-1	6.326	5.390	1252612	537853	988.111	974.021
22) L5 AR-1248-2	6.622	5.656	756570	326772	433.976	396.622
23) L5 AR-1248-3	6.840	5.702	860858	399934	420.030	481.910
24) L5 AR-1248-4	7.270	5.890	144900	398592	61.899	421.824 #
25) L5 AR-1248-5	7.310	6.318	137694	64426	60.551	70.266
26) L6 AR-1254-1	7.239	6.274	628285	329829	287.625	243.224
27) L6 AR-1254-2	7.469	6.435	687404	310622	209.335	259.055
28) L6 AR-1254-3	7.853	6.880	380848	535602	110.610	286.255 #
29) L6 AR-1254-4	8.149	7.104	219174	72149	86.174	60.942 #
30) L6 AR-1254-5	8.579	7.539	1995654	980313	750.401	611.970
31) L7 AR-1260-1	8.021	7.001	1397221	732980	569.491	566.286
32) L7 AR-1260-2	8.287	7.199	1649894	861177	536.870	562.949
33) L7 AR-1260-3	8.654	7.358	1033964	790972	466.317	541.739
34) L7 AR-1260-4	8.886	7.847	1272469	571554	495.688	482.337
35) L7 AR-1260-5	9.220	8.096	2306602	1280813	451.130	484.849
36) L8 AR-1262-1	8.654	7.539	1033964	980313	323.344	1164.613 #
37) L8 AR-1262-2	9.220	8.096	2306602	1280813	425.892	477.012
38) L8 AR-1262-3	9.562	8.386	1531559	265561	404.943	239.097 #
39) L8 AR-1262-4	9.616f	8.450	823584	926464	291.471	463.371 #
40) L8 AR-1262-5	10.323	8.956	570091	297800	299.804	305.290
41) L9 AR-1268-1	9.562f	8.386	1531559	265561	236.567	87.400 #

Data Path : Z:\pestpcbsrv\HPCHEM1\ECD\_0\Data\P0080621\  
 Data File : P0080273.D  
 Signal(s) : Signal #1: ECD1A.CH Signal #2: ECD2B.CH  
 Acq On : 06 Aug 2021 18:02  
 Operator : DD\AJ  
 Sample : M3279-09MS  
 Misc :  
 ALS Vial : 28 Sample Multiplier: 1

Instrument :  
 ECD\_0  
 ClientSampleId :

Integration File signal 1: autoint1.e  
 Integration File signal 2: autoint2.e  
 Quant Time: Aug 09 01:35:45 2021  
 Quant Method : Z:\pestpcbsrv\HPCHEM1\ECD\_0\methods\P0072821.M  
 Quant Title : GC EXTRACTABLES  
 QLast Update : Wed Jul 28 18:45:36 2021  
 Response via : Initial Calibration  
 Integrator: ChemStation 6890 Scale Mode: Small noise peaks clipped

Volume Inj. : 2 µl  
 Signal #1 Phase : ZB-MR1 Signal #2 Phase: ZB-MR2  
 Signal #1 Info : 30Mx0.32mmx 0.50µ Signal #2 Info : 30M x 0.32mm x 0.25µm

	Compound	RT#1	RT#2	Resp#1	Resp#2	ng/ml	ng/ml
42)	L9 AR-1268-2	0.000	8.450	0	926464	N.D.	340.494 #
43)	L9 AR-1268-3	9.869	8.662	42575	25280	8.473	10.906 #
44)	L9 AR-1268-4	10.323	8.956	570091	297800	248.118	278.157
45)	L9 AR-1268-5	10.752	9.254	193696	102599	11.618	14.773 #

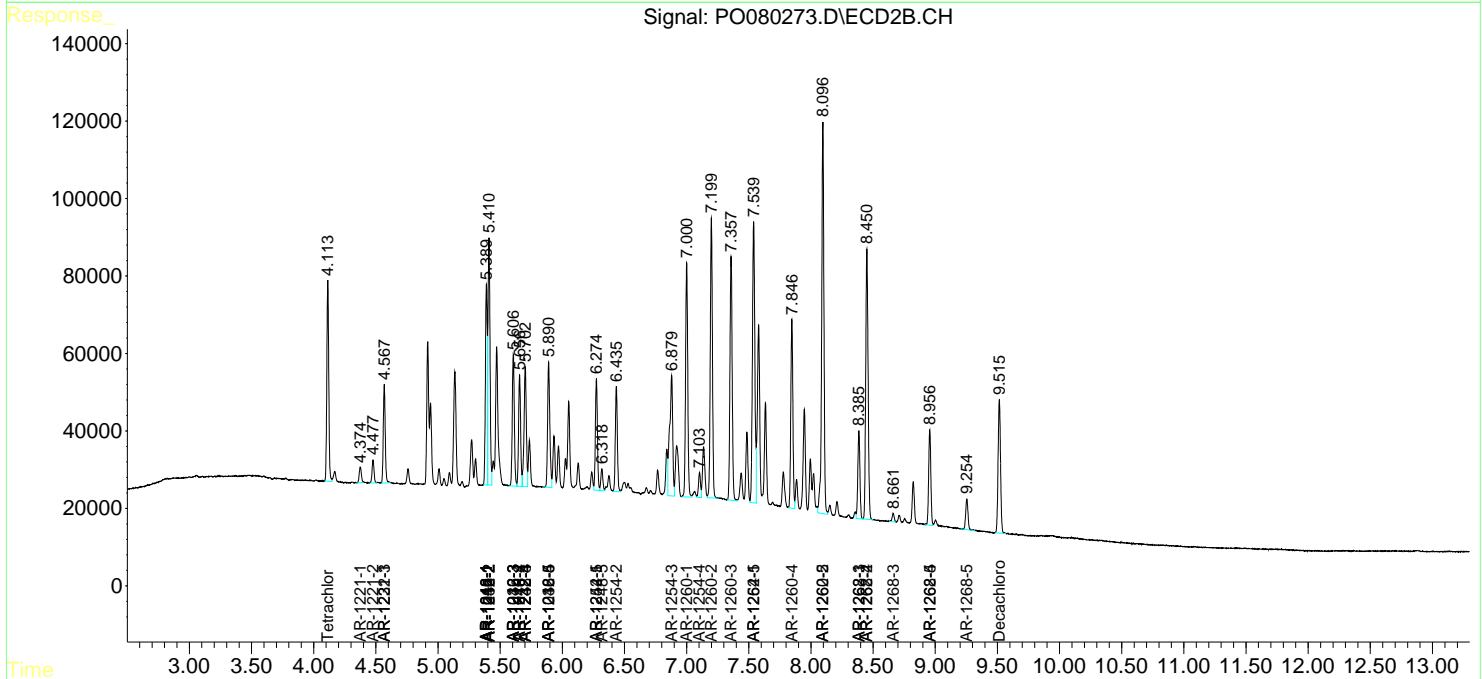
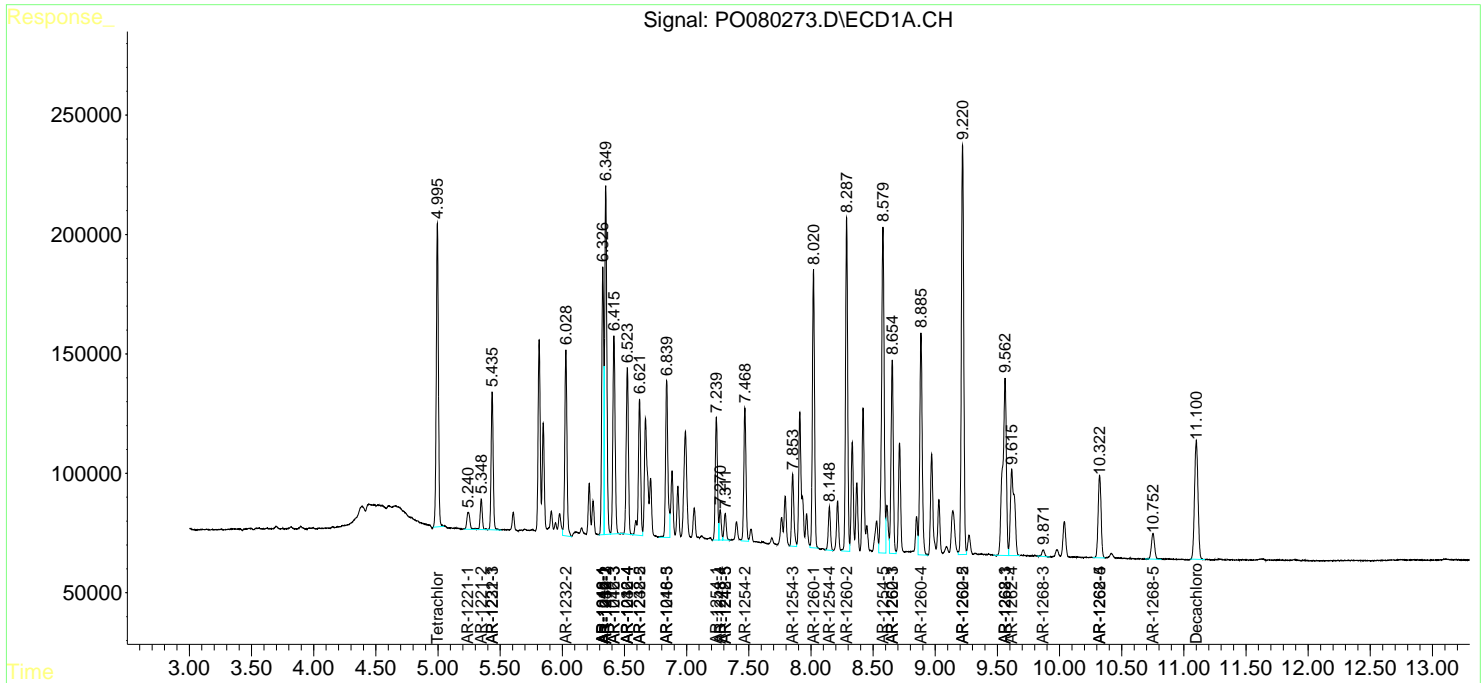
(f)=RT Delta > 1/2 Window (#)=Amounts differ by > 25% (m)=manual int.

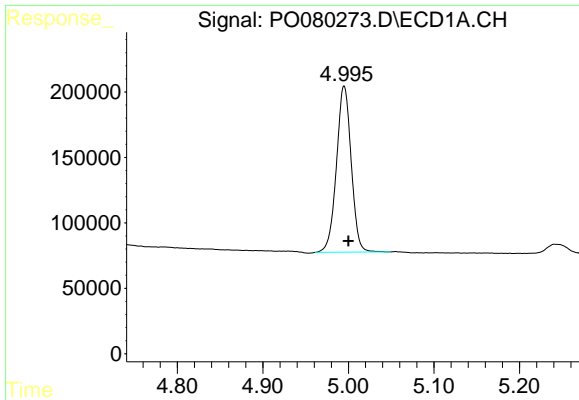
Data Path : Z:\pestpcbsrv\HPCHEM1\ECD\_O\Data\P0080621\  
 Data File : P0080273.D  
 Signal(s) : Signal #1: ECD1A.CH Signal #2: ECD2B.CH  
 Acq On : 06 Aug 2021 18:02  
 Operator : DD\AJ  
 Sample : M3279-09MS  
 Misc :  
 ALS Vial : 28 Sample Multiplier: 1

Instrument :  
 ECD\_O  
 ClientSampled :

Integration File signal 1: autoint1.e  
 Integration File signal 2: autoint2.e  
 Quant Time: Aug 09 01:35:45 2021  
 Quant Method : Z:\pestpcbsrv\HPCHEM1\ECD\_O\methods\P0072821.M  
 Quant Title : GC EXTRACTABLES  
 QLast Update : Wed Jul 28 18:45:36 2021  
 Response via : Initial Calibration  
 Integrator: ChemStation 6890 Scale Mode: Small noise peaks clipped

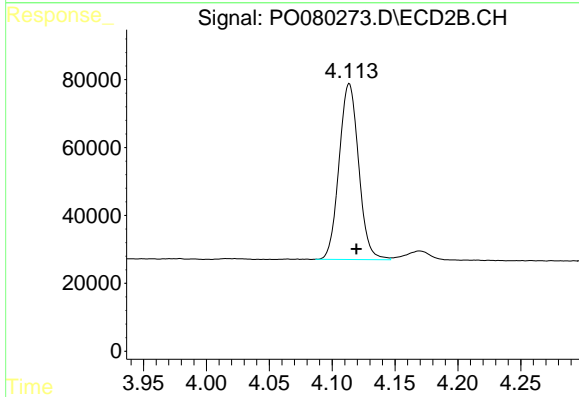
Volume Inj. : 2 µl  
 Signal #1 Phase : ZB-MR1 Signal #2 Phase: ZB-MR2  
 Signal #1 Info : 30Mx0.32mmx 0.50µ Signal #2 Info : 30M x 0.32mm x 0.25µm



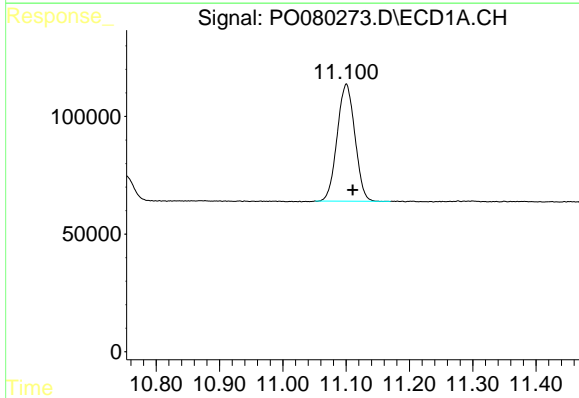


#1 Tetrachloro-m-xylene  
 R.T.: 4.995 min  
 Delta R.T.: -0.005 min  
 Response: 1521310  
 Conc: 25.25 ng/ml

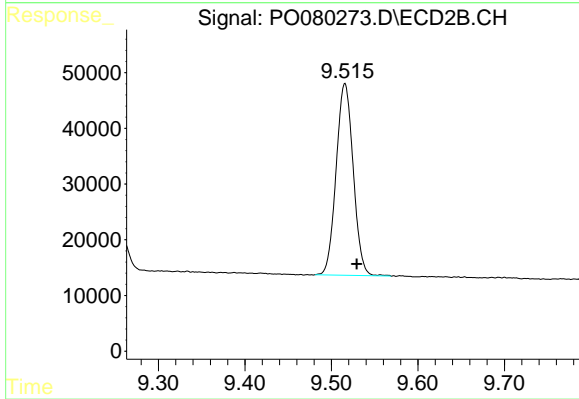
Instrument :  
 ECD\_O  
 ClientSampleId :



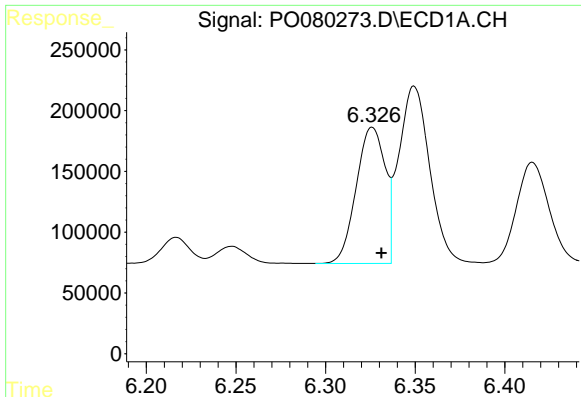
#1 Tetrachloro-m-xylene  
 R.T.: 4.114 min  
 Delta R.T.: -0.006 min  
 Response: 560357  
 Conc: 24.47 ng/ml



#2 Decachlorobiphenyl  
 R.T.: 11.100 min  
 Delta R.T.: -0.010 min  
 Response: 965329  
 Conc: 20.58 ng/ml



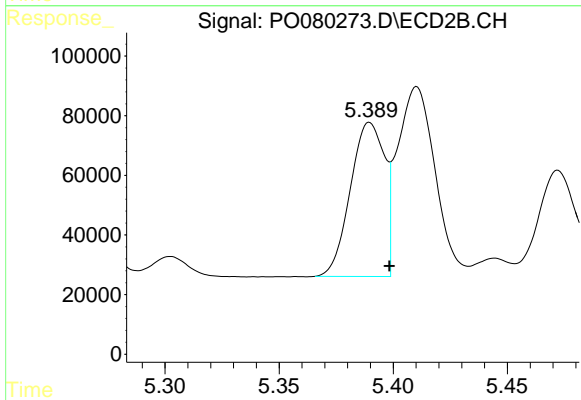
#2 Decachlorobiphenyl  
 R.T.: 9.516 min  
 Delta R.T.: -0.014 min  
 Response: 470731  
 Conc: 22.65 ng/ml



#3 AR-1016-1

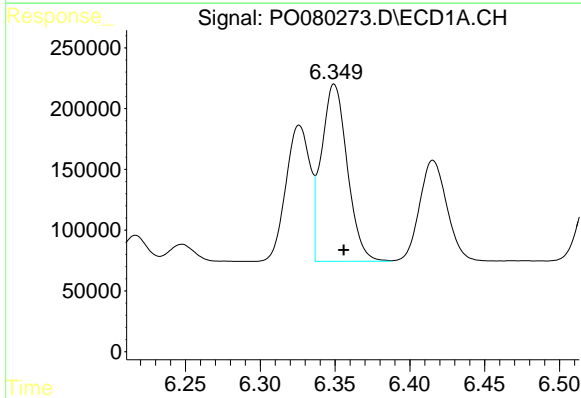
R.T.: 6.326 min  
 Delta R.T.: -0.005 min  
 Response: 1252612  
 Conc: 569.83 ng/ml

Instrument :  
 ECD\_O  
 ClientSampled :



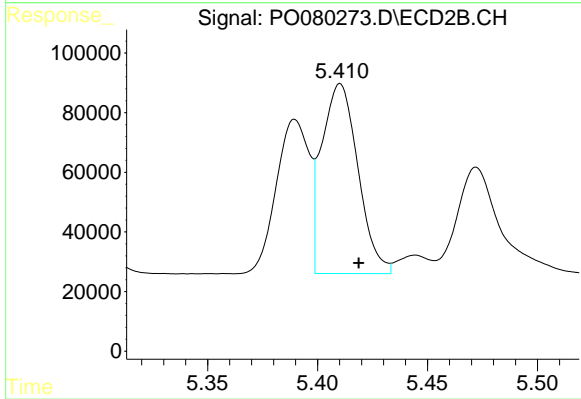
#3 AR-1016-1

R.T.: 5.390 min  
 Delta R.T.: -0.009 min  
 Response: 537853  
 Conc: 572.23 ng/ml



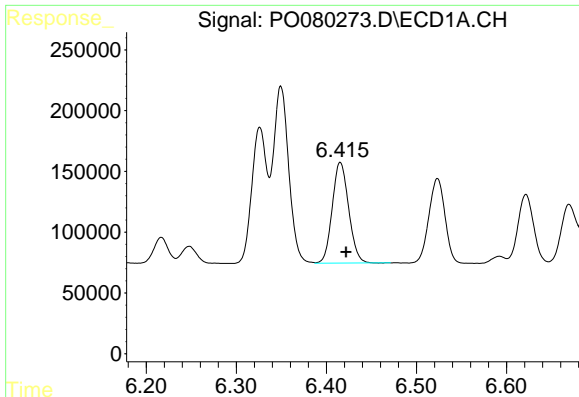
#4 AR-1016-2

R.T.: 6.350 min  
 Delta R.T.: -0.006 min  
 Response: 1758692  
 Conc: 576.43 ng/ml



#4 AR-1016-2

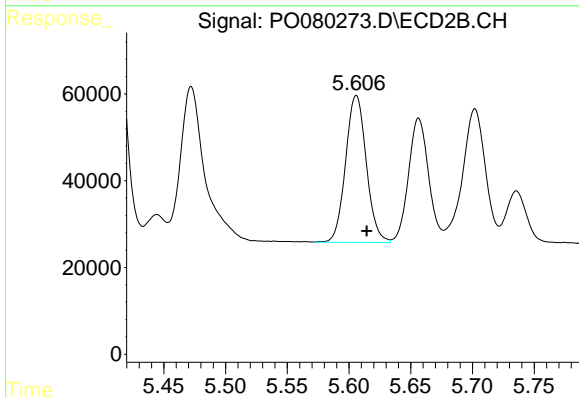
R.T.: 5.410 min  
 Delta R.T.: -0.008 min  
 Response: 731140  
 Conc: 574.70 ng/ml



#5 AR-1016-3

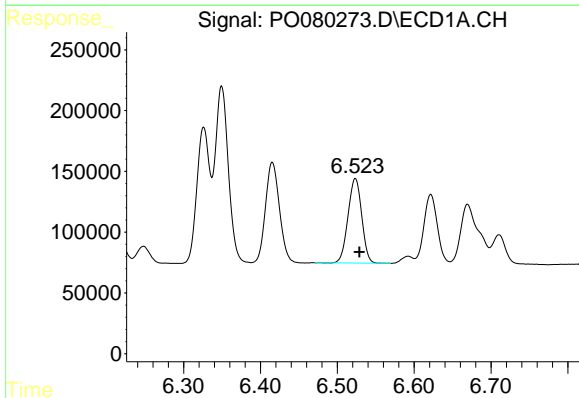
R.T.: 6.416 min  
Delta R.T.: -0.006 min  
Response: 1046797  
Conc: 556.27 ng/ml

Instrument :  
ECD\_O  
ClientSampleId :



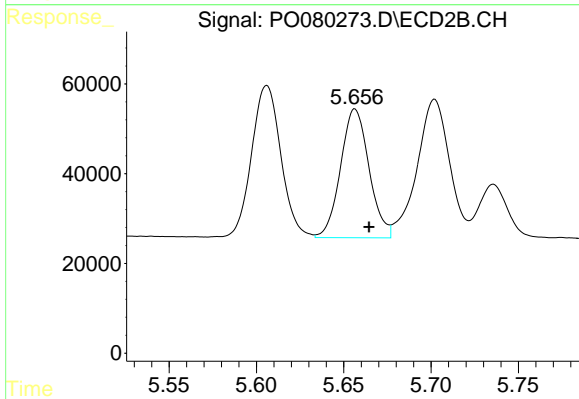
#5 AR-1016-3

R.T.: 5.606 min  
Delta R.T.: -0.009 min  
Response: 396239  
Conc: 562.03 ng/ml



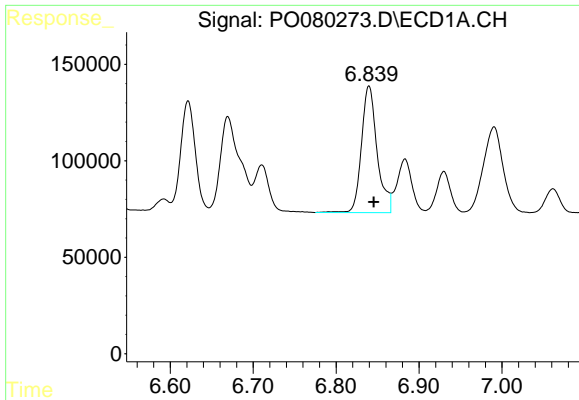
#6 AR-1016-4

R.T.: 6.523 min  
Delta R.T.: -0.005 min  
Response: 864116  
Conc: 560.43 ng/ml



#6 AR-1016-4

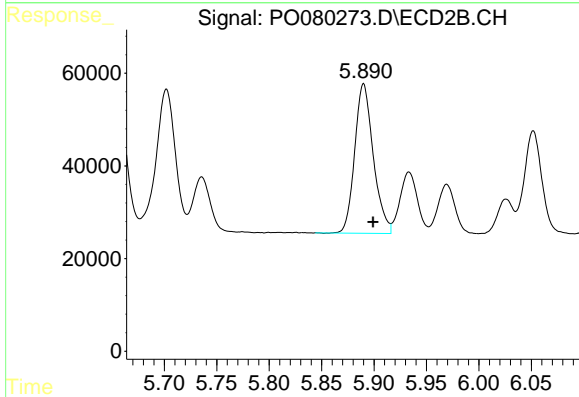
R.T.: 5.656 min  
Delta R.T.: -0.008 min  
Response: 326772  
Conc: 540.78 ng/ml



#7 AR-1016-5

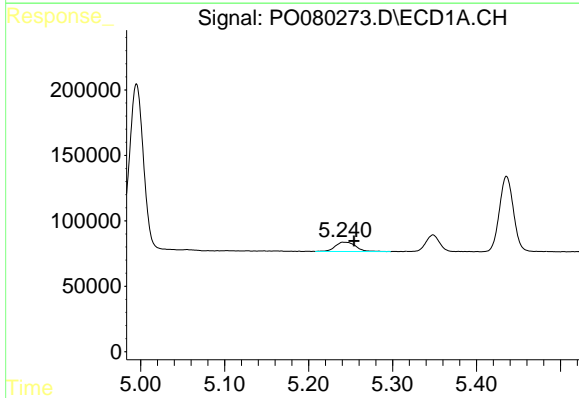
R.T.: 6.840 min  
 Delta R.T.: -0.006 min  
 Response: 860858  
 Conc: 569.01 ng/ml

Instrument :  
 ECD\_O  
 ClientSampleId :



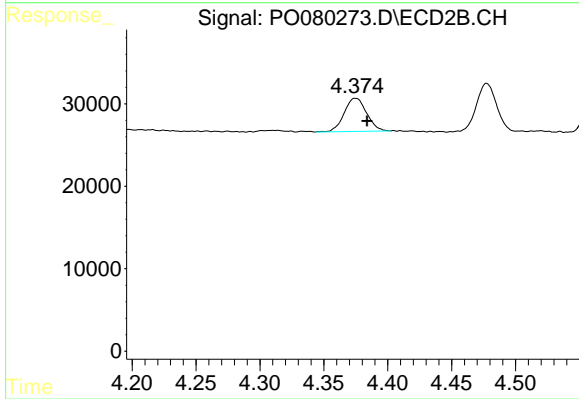
#7 AR-1016-5

R.T.: 5.890 min  
 Delta R.T.: -0.009 min  
 Response: 398592  
 Conc: 541.24 ng/ml



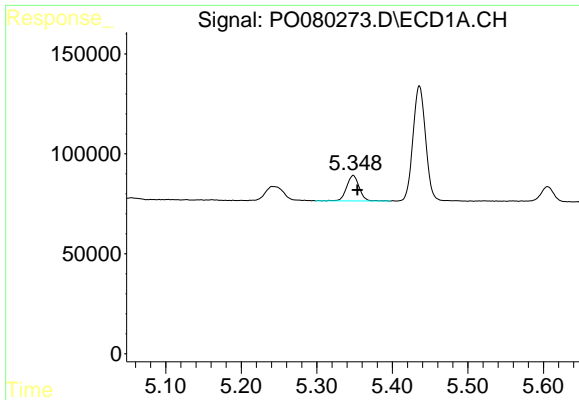
#8 AR-1221-1

R.T.: 5.242 min  
 Delta R.T.: -0.012 min  
 Response: 120303  
 Conc: 186.70 ng/ml



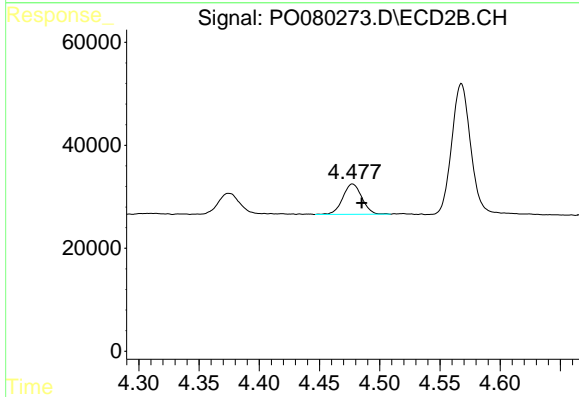
#8 AR-1221-1

R.T.: 4.375 min  
 Delta R.T.: -0.009 min  
 Response: 49011  
 Conc: 169.72 ng/ml

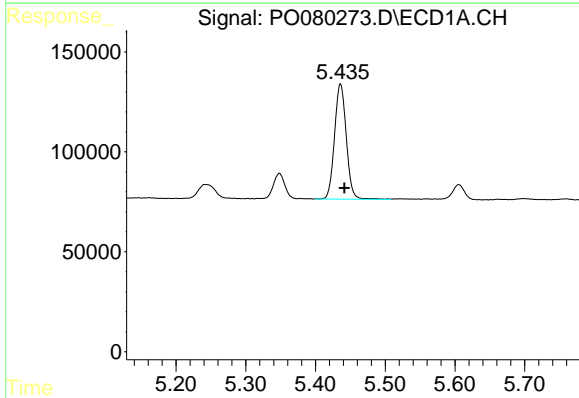


#9 AR-1221-2  
 R.T.: 5.348 min  
 Delta R.T.: -0.006 min  
 Response: 147347  
 Conc: 320.90 ng/ml

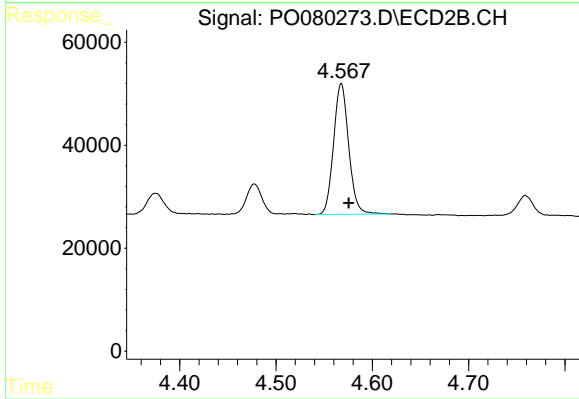
Instrument :  
 ECD\_O  
 ClientSampled :



#9 AR-1221-2  
 R.T.: 4.477 min  
 Delta R.T.: -0.008 min  
 Response: 65319  
 Conc: 304.56 ng/ml

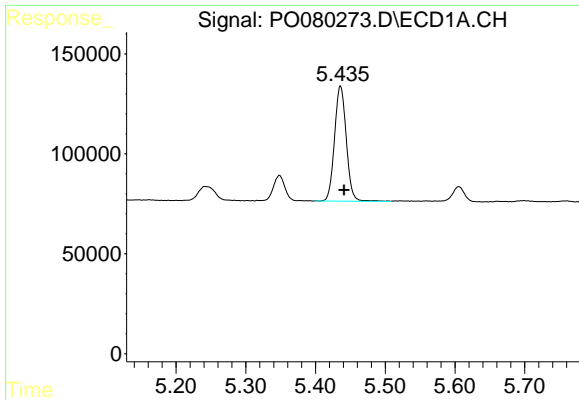


#10 AR-1221-3  
 R.T.: 5.436 min  
 Delta R.T.: -0.006 min  
 Response: 674912  
 Conc: 437.39 ng/ml



#10 AR-1221-3  
 R.T.: 4.568 min  
 Delta R.T.: -0.008 min  
 Response: 278073  
 Conc: 428.32 ng/ml

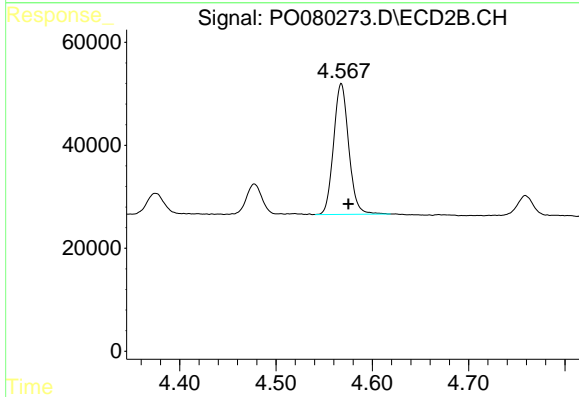




#11 AR-1232-1

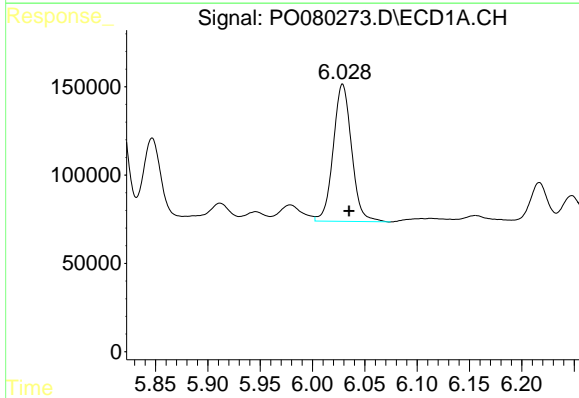
R.T.: 5.436 min  
 Delta R.T.: -0.005 min  
 Response: 674912  
 Conc: 473.60 ng/ml

Instrument :  
 ECD\_O  
 ClientSampleId :



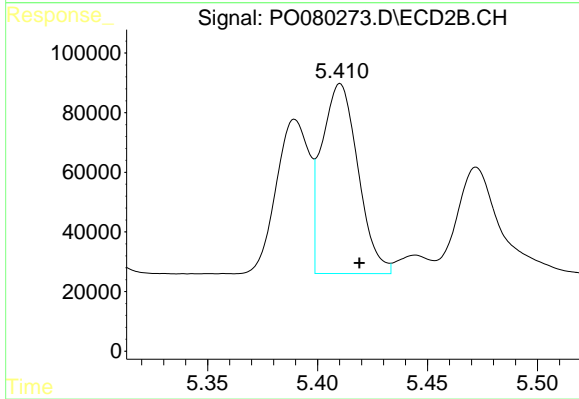
#11 AR-1232-1

R.T.: 4.568 min  
 Delta R.T.: -0.007 min  
 Response: 278073  
 Conc: 461.14 ng/ml



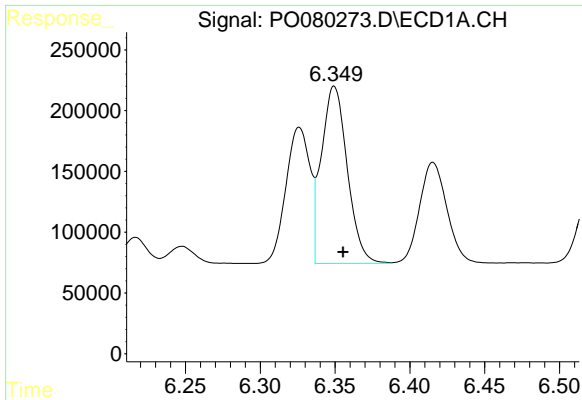
#12 AR-1232-2

R.T.: 6.029 min  
 Delta R.T.: -0.006 min  
 Response: 948144  
 Conc: 1357.31 ng/ml



#12 AR-1232-2

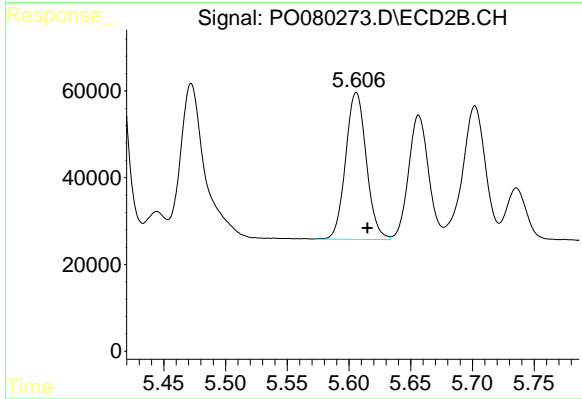
R.T.: 5.410 min  
 Delta R.T.: -0.009 min  
 Response: 731140  
 Conc: 1300.17 ng/ml



#13 AR-1232-3

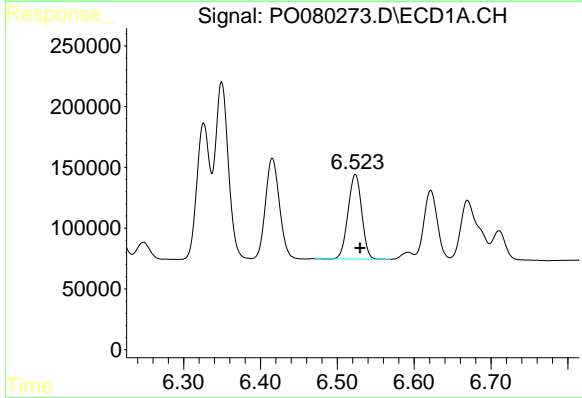
R.T.: 6.350 min  
 Delta R.T.: -0.006 min  
 Response: 1758692  
 Conc: 1319.57 ng/ml

Instrument :  
 ECD\_O  
 ClientSampleId :



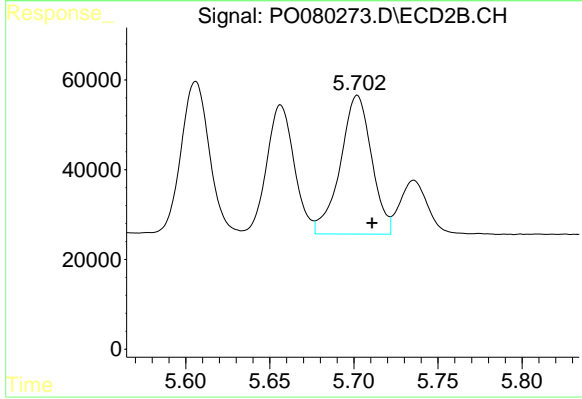
#13 AR-1232-3

R.T.: 5.606 min  
 Delta R.T.: -0.009 min  
 Response: 396239  
 Conc: 1316.14 ng/ml



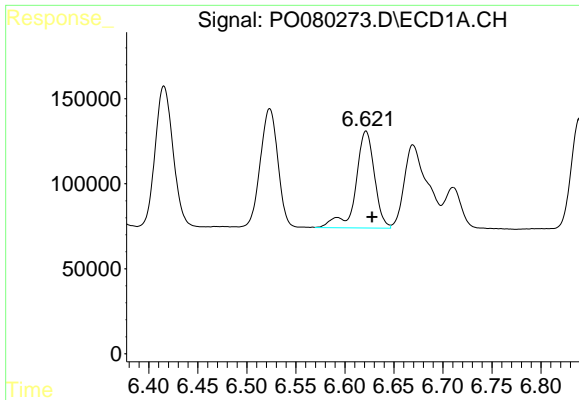
#14 AR-1232-4

R.T.: 6.523 min  
 Delta R.T.: -0.006 min  
 Response: 864116  
 Conc: 1326.85 ng/ml



#14 AR-1232-4

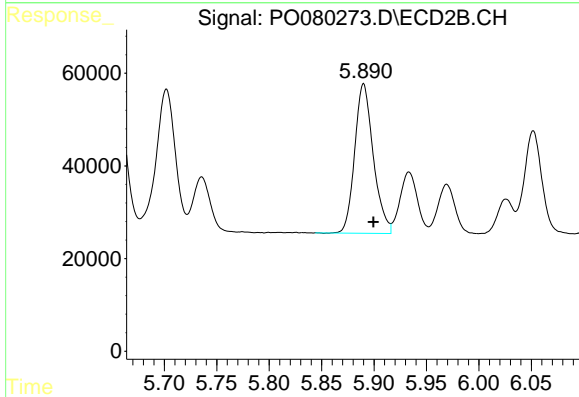
R.T.: 5.702 min  
 Delta R.T.: -0.009 min  
 Response: 399934  
 Conc: 1404.91 ng/ml



#15 AR-1232-5

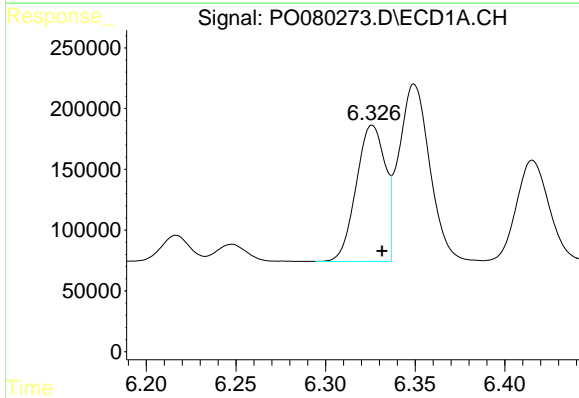
R.T.: 6.622 min  
 Delta R.T.: -0.006 min  
 Response: 756570  
 Conc: 1694.24 ng/ml

Instrument :  
 ECD\_O  
 ClientSampleId :



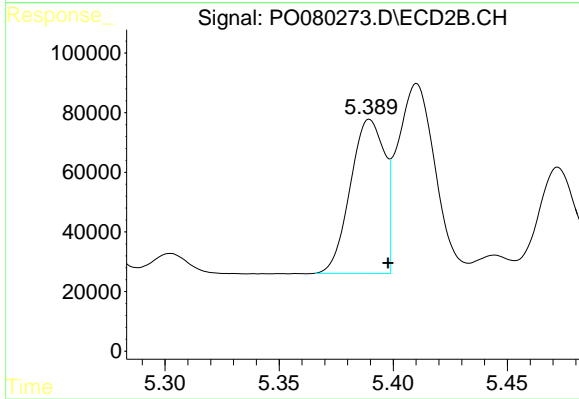
#15 AR-1232-5

R.T.: 5.890 min  
 Delta R.T.: -0.009 min  
 Response: 398592  
 Conc: 1327.26 ng/ml



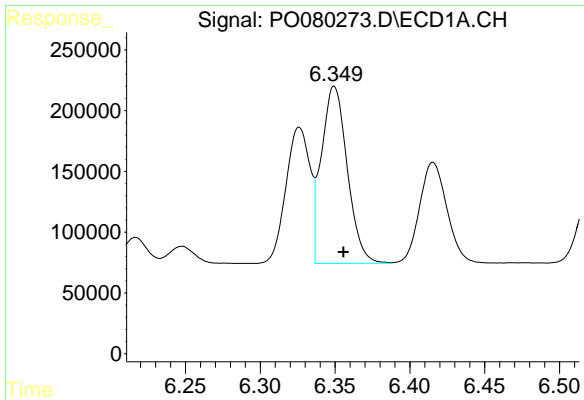
#16 AR-1242-1

R.T.: 6.326 min  
 Delta R.T.: -0.005 min  
 Response: 1252612  
 Conc: 751.56 ng/ml



#16 AR-1242-1

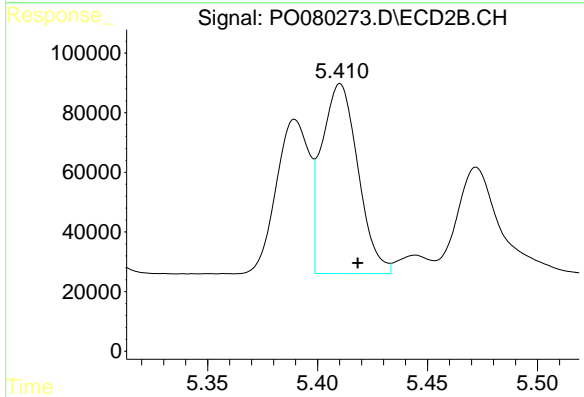
R.T.: 5.390 min  
 Delta R.T.: -0.008 min  
 Response: 537853  
 Conc: 755.22 ng/ml



#17 AR-1242-2

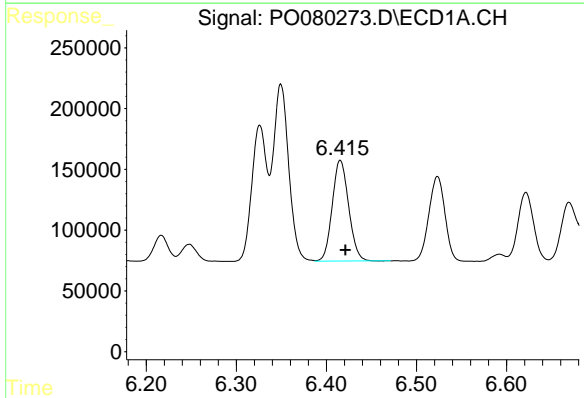
R.T.: 6.350 min  
Delta R.T.: -0.006 min  
Response: 1758692  
Conc: 764.71 ng/ml

Instrument :  
ECD\_O  
ClientSampleId :



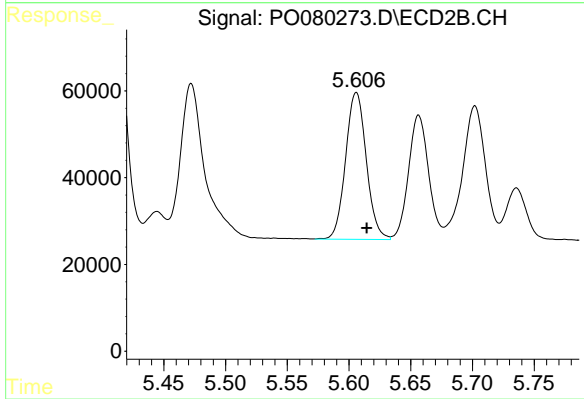
#17 AR-1242-2

R.T.: 5.410 min  
Delta R.T.: -0.008 min  
Response: 731140  
Conc: 755.03 ng/ml



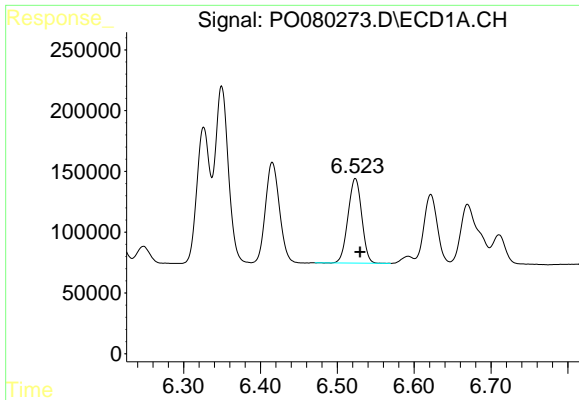
#18 AR-1242-3

R.T.: 6.416 min  
Delta R.T.: -0.006 min  
Response: 1046797  
Conc: 737.39 ng/ml



#18 AR-1242-3

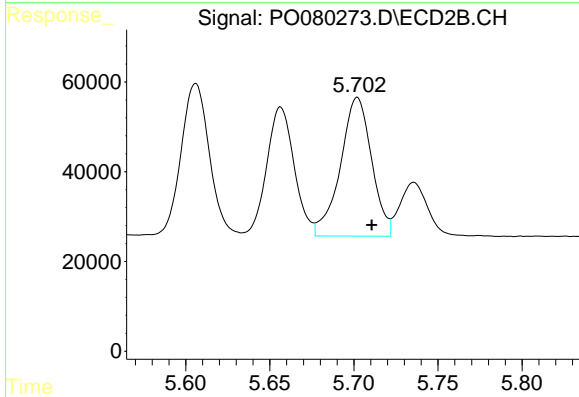
R.T.: 5.606 min  
Delta R.T.: -0.008 min  
Response: 396239  
Conc: 738.48 ng/ml



#19 AR-1242-4

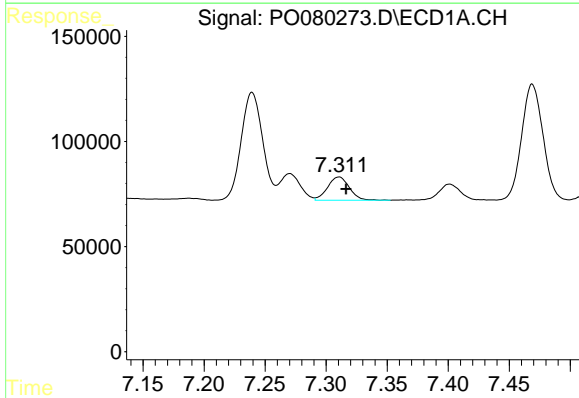
R.T.: 6.523 min  
 Delta R.T.: -0.006 min  
 Response: 864116  
 Conc: 761.50 ng/ml

Instrument :  
 ECD\_O  
 ClientSampled :



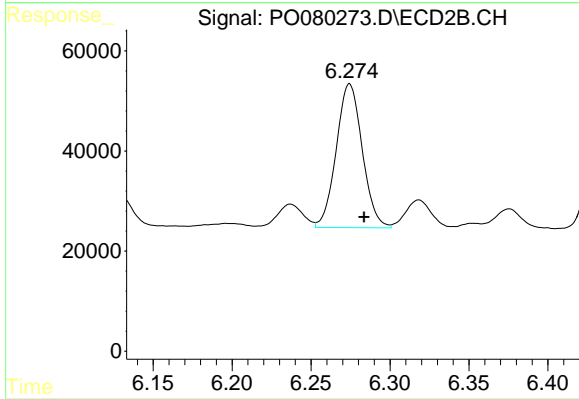
#19 AR-1242-4

R.T.: 5.702 min  
 Delta R.T.: -0.008 min  
 Response: 399934  
 Conc: 712.24 ng/ml



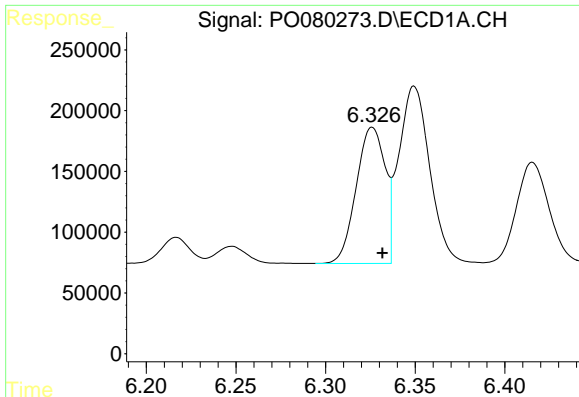
#20 AR-1242-5

R.T.: 7.310 min  
 Delta R.T.: -0.006 min  
 Response: 137694  
 Conc: 108.46 ng/ml



#20 AR-1242-5

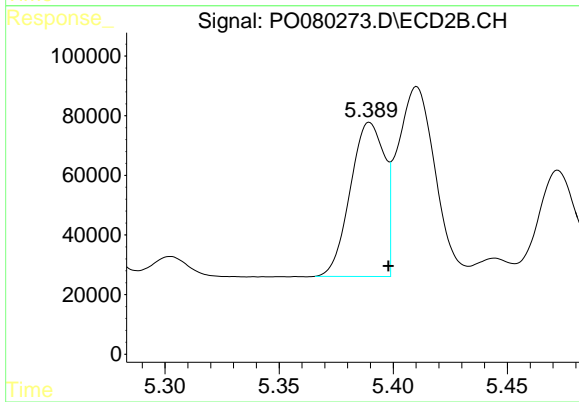
R.T.: 6.274 min  
 Delta R.T.: -0.009 min  
 Response: 329829  
 Conc: 506.89 ng/ml



#21 AR-1248-1

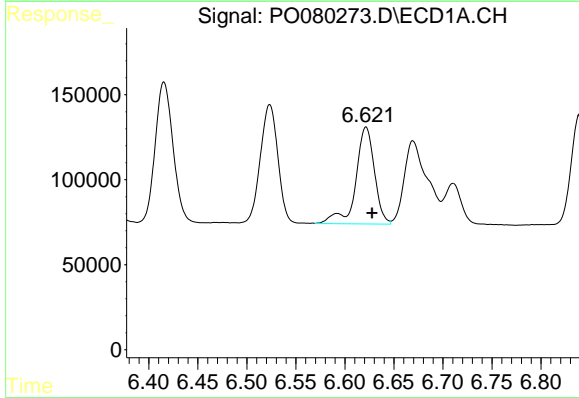
R.T.: 6.326 min  
 Delta R.T.: -0.006 min  
 Response: 1252612  
 Conc: 988.11 ng/ml

Instrument :  
 ECD\_O  
 ClientSampled :



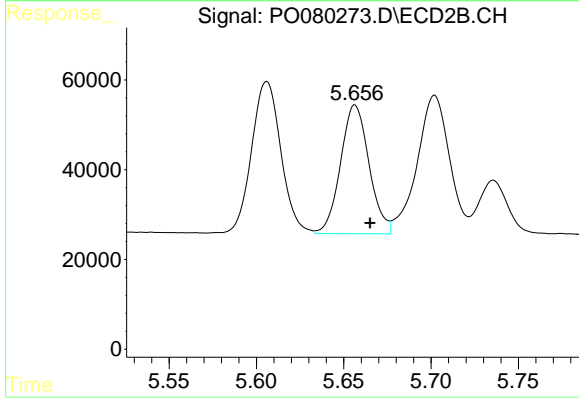
#21 AR-1248-1

R.T.: 5.390 min  
 Delta R.T.: -0.008 min  
 Response: 537853  
 Conc: 974.02 ng/ml



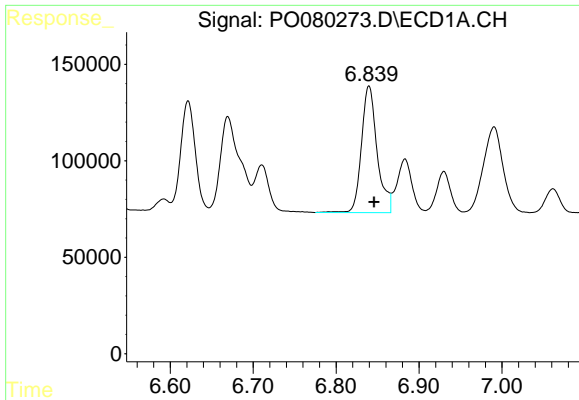
#22 AR-1248-2

R.T.: 6.622 min  
 Delta R.T.: -0.006 min  
 Response: 756570  
 Conc: 433.98 ng/ml



#22 AR-1248-2

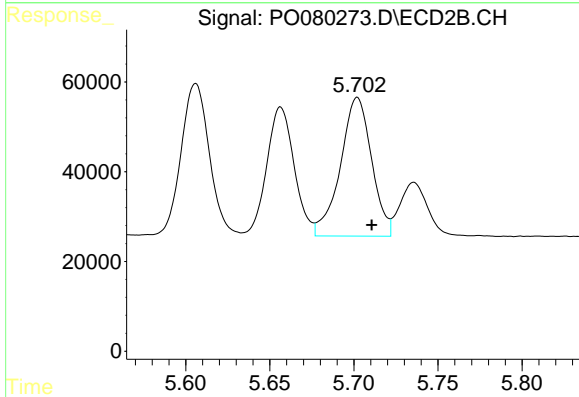
R.T.: 5.656 min  
 Delta R.T.: -0.009 min  
 Response: 326772  
 Conc: 396.62 ng/ml



#23 AR-1248-3

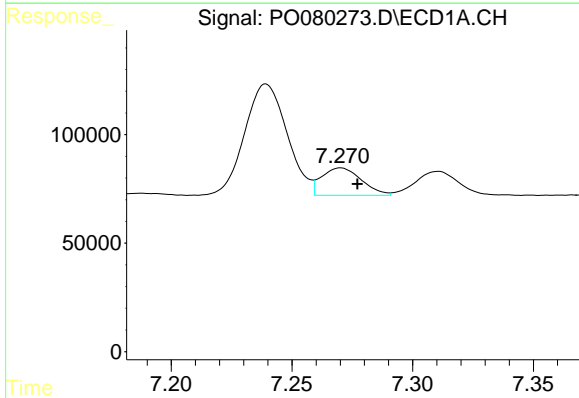
R.T.: 6.840 min  
 Delta R.T.: -0.006 min  
 Response: 860858  
 Conc: 420.03 ng/ml

Instrument :  
 ECD\_O  
 ClientSampled :



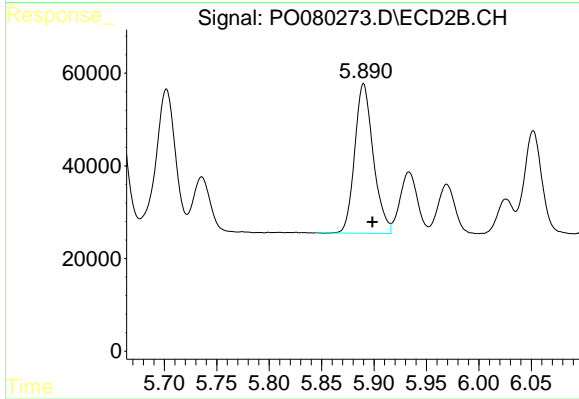
#23 AR-1248-3

R.T.: 5.702 min  
 Delta R.T.: -0.008 min  
 Response: 399934  
 Conc: 481.91 ng/ml



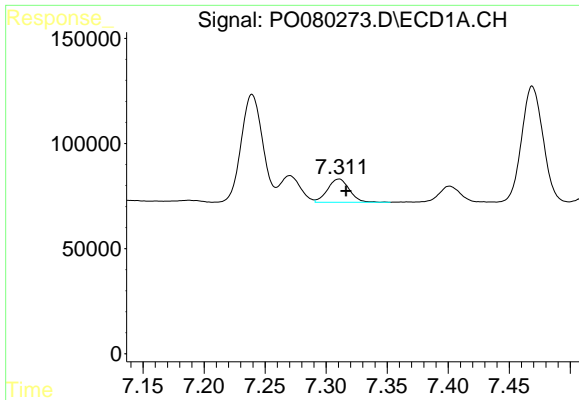
#24 AR-1248-4

R.T.: 7.270 min  
 Delta R.T.: -0.007 min  
 Response: 144900  
 Conc: 61.90 ng/ml



#24 AR-1248-4

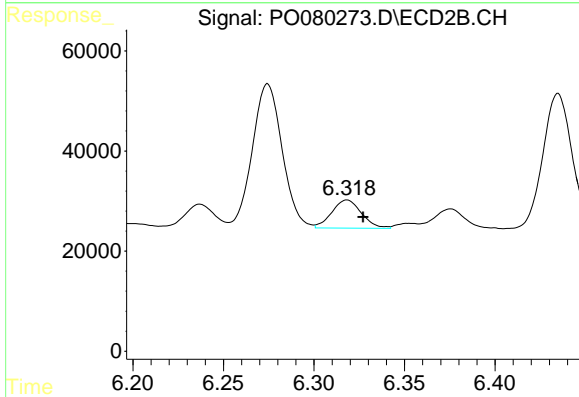
R.T.: 5.890 min  
 Delta R.T.: -0.009 min  
 Response: 398592  
 Conc: 421.82 ng/ml



#25 AR-1248-5

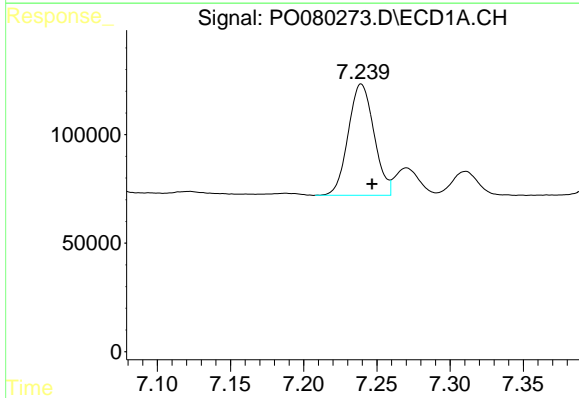
R.T.: 7.310 min  
 Delta R.T.: -0.006 min  
 Response: 137694  
 Conc: 60.55 ng/ml

Instrument :  
 ECD\_O  
 ClientSampleId :



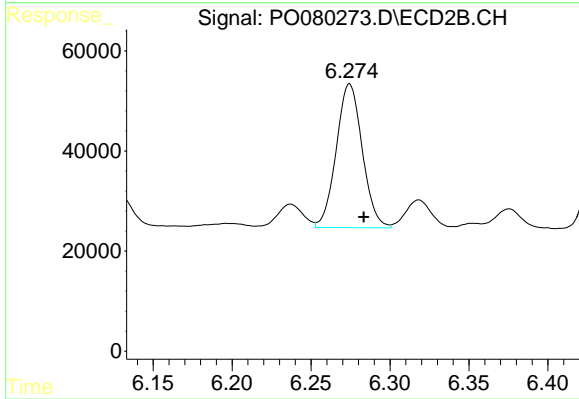
#25 AR-1248-5

R.T.: 6.318 min  
 Delta R.T.: -0.009 min  
 Response: 64426  
 Conc: 70.27 ng/ml



#26 AR-1254-1

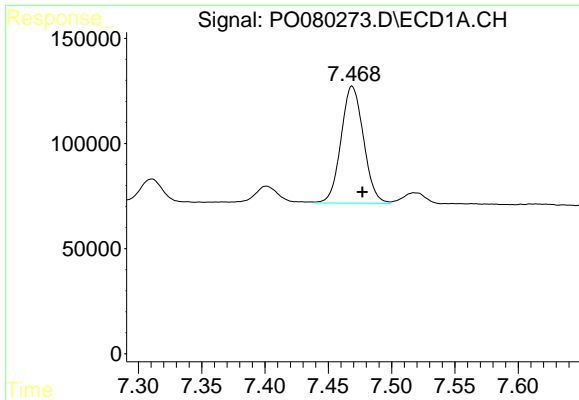
R.T.: 7.239 min  
 Delta R.T.: -0.007 min  
 Response: 628285  
 Conc: 287.62 ng/ml



#26 AR-1254-1

R.T.: 6.274 min  
 Delta R.T.: -0.009 min  
 Response: 329829  
 Conc: 243.22 ng/ml

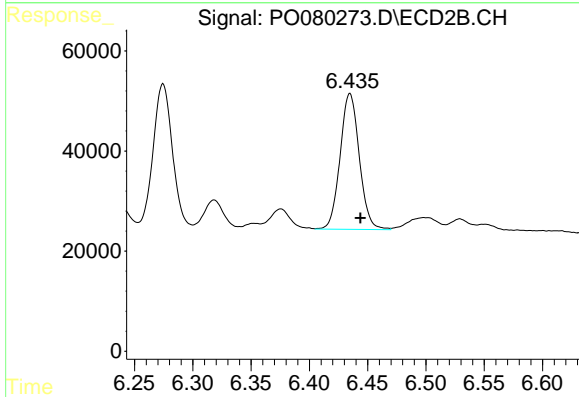




#27 AR-1254-2

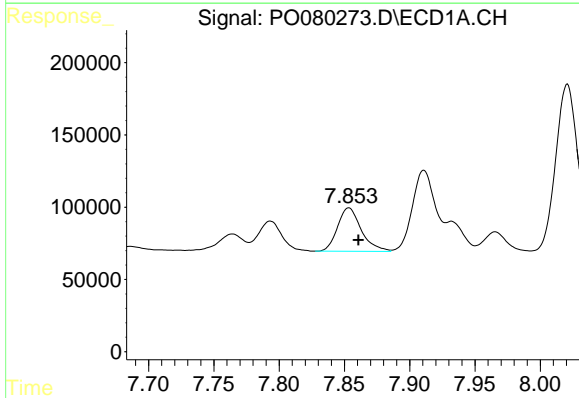
R.T.: 7.469 min  
 Delta R.T.: -0.008 min  
 Response: 687404  
 Conc: 209.33 ng/ml

Instrument :  
 ECD\_O  
 ClientSampleId :



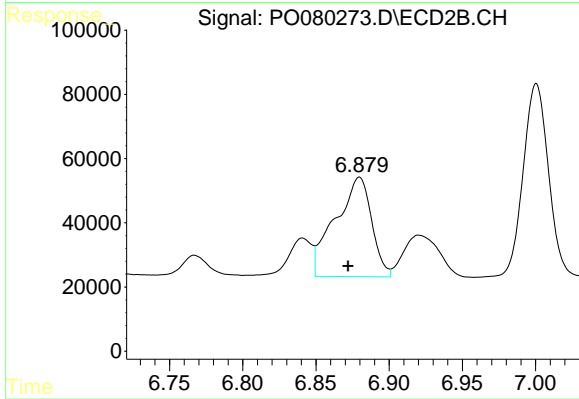
#27 AR-1254-2

R.T.: 6.435 min  
 Delta R.T.: -0.009 min  
 Response: 310622  
 Conc: 259.06 ng/ml



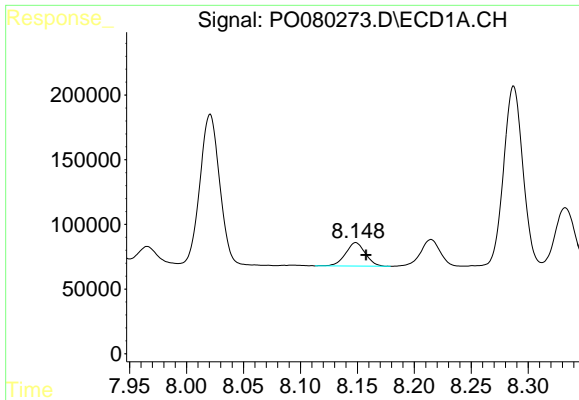
#28 AR-1254-3

R.T.: 7.853 min  
 Delta R.T.: -0.007 min  
 Response: 380848  
 Conc: 110.61 ng/ml



#28 AR-1254-3

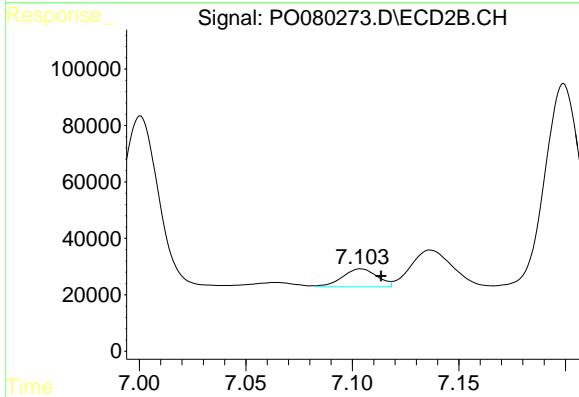
R.T.: 6.880 min  
 Delta R.T.: 0.008 min  
 Response: 535602  
 Conc: 286.25 ng/ml



#29 AR-1254-4

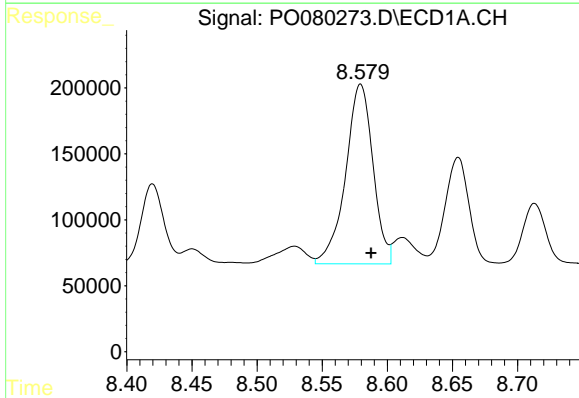
R.T.: 8.149 min  
 Delta R.T.: -0.009 min  
 Response: 219174  
 Conc: 86.17 ng/ml

Instrument :  
 ECD\_O  
 ClientSampled :



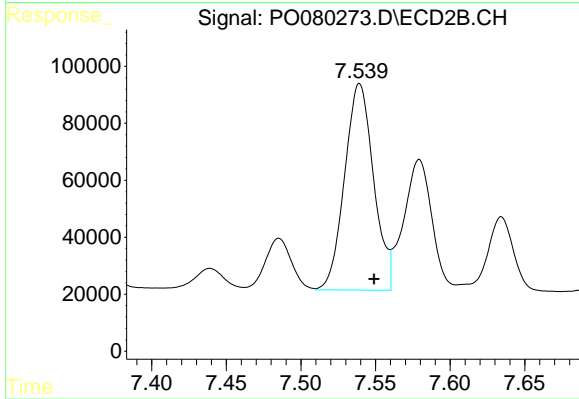
#29 AR-1254-4

R.T.: 7.104 min  
 Delta R.T.: -0.009 min  
 Response: 72149  
 Conc: 60.94 ng/ml



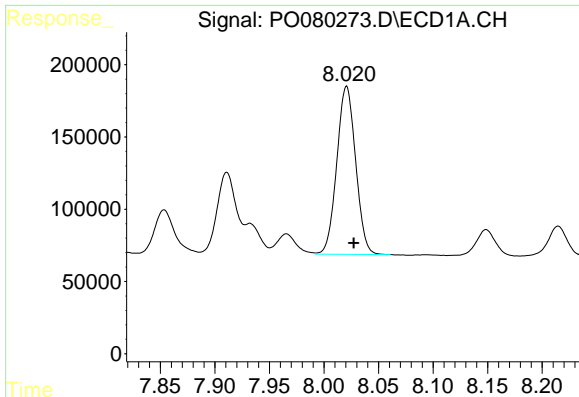
#30 AR-1254-5

R.T.: 8.579 min  
 Delta R.T.: -0.008 min  
 Response: 1995654  
 Conc: 750.40 ng/ml



#30 AR-1254-5

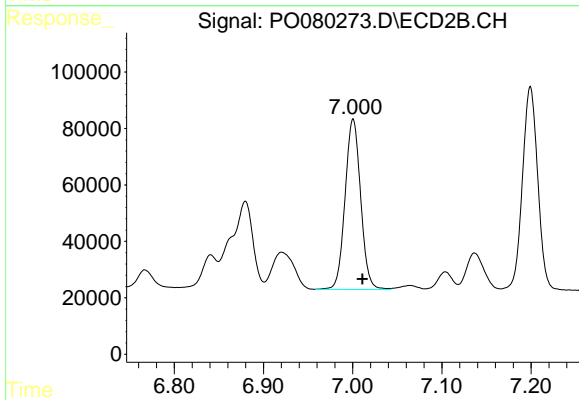
R.T.: 7.539 min  
 Delta R.T.: -0.010 min  
 Response: 980313  
 Conc: 611.97 ng/ml



#31 AR-1260-1

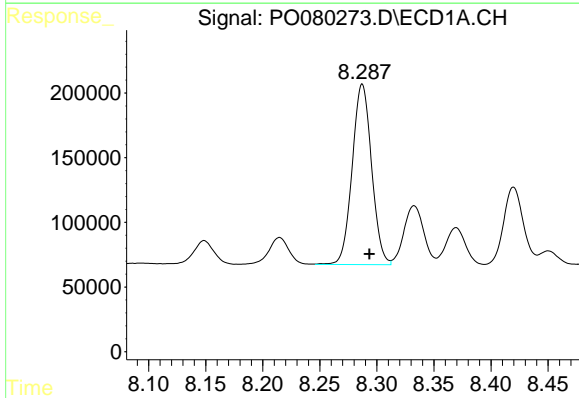
R.T.: 8.021 min  
 Delta R.T.: -0.007 min  
 Response: 1397221  
 Conc: 569.49 ng/ml

Instrument :  
 ECD\_O  
 ClientSampled :



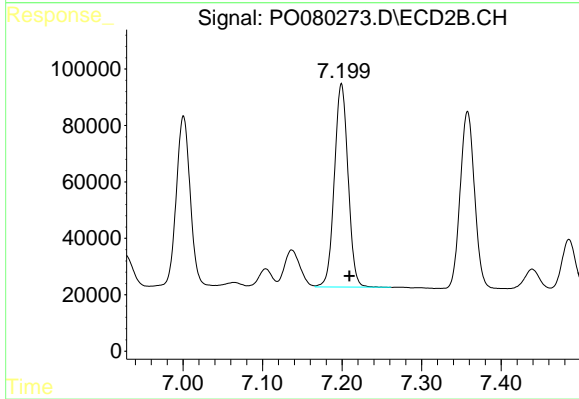
#31 AR-1260-1

R.T.: 7.001 min  
 Delta R.T.: -0.010 min  
 Response: 732980  
 Conc: 566.29 ng/ml



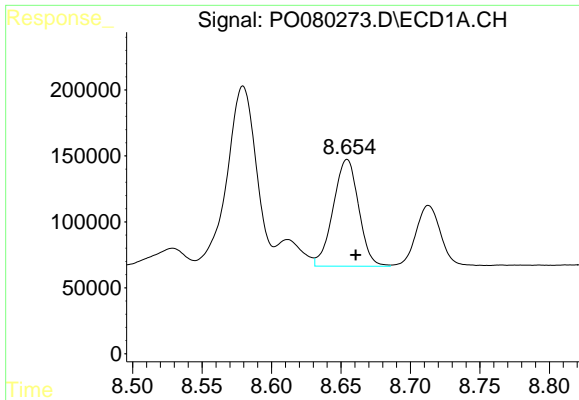
#32 AR-1260-2

R.T.: 8.287 min  
 Delta R.T.: -0.006 min  
 Response: 1649894  
 Conc: 536.87 ng/ml



#32 AR-1260-2

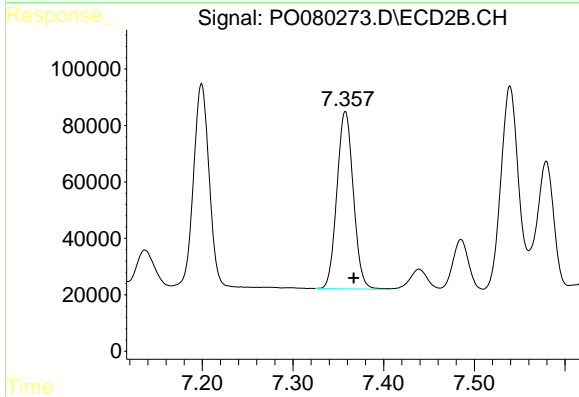
R.T.: 7.199 min  
 Delta R.T.: -0.010 min  
 Response: 861177  
 Conc: 562.95 ng/ml



#33 AR-1260-3

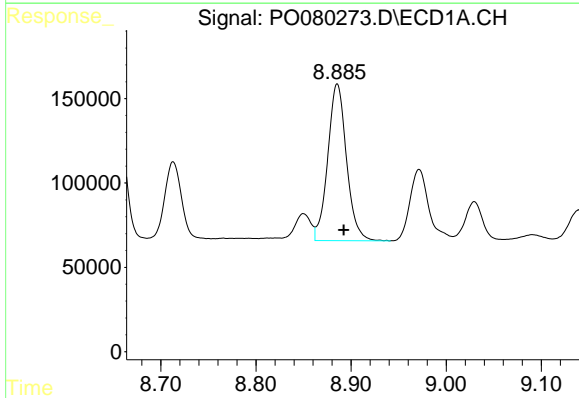
R.T.: 8.654 min  
 Delta R.T.: -0.006 min  
 Response: 1033964  
 Conc: 466.32 ng/ml

Instrument :  
 ECD\_O  
 ClientSampled :



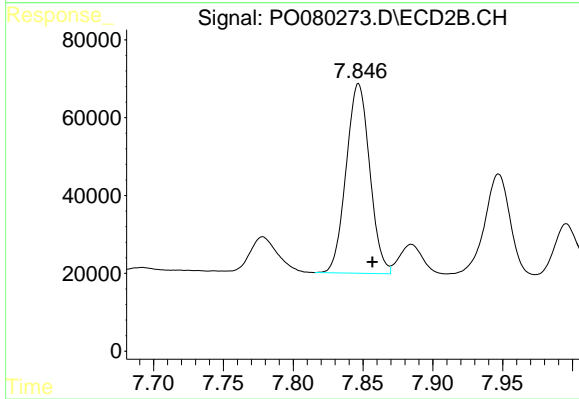
#33 AR-1260-3

R.T.: 7.358 min  
 Delta R.T.: -0.009 min  
 Response: 790972  
 Conc: 541.74 ng/ml



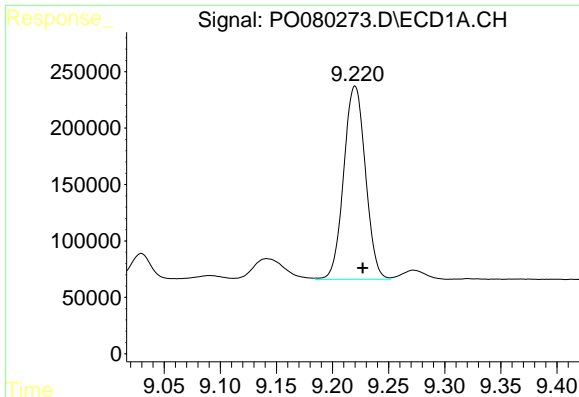
#34 AR-1260-4

R.T.: 8.886 min  
 Delta R.T.: -0.007 min  
 Response: 1272469  
 Conc: 495.69 ng/ml



#34 AR-1260-4

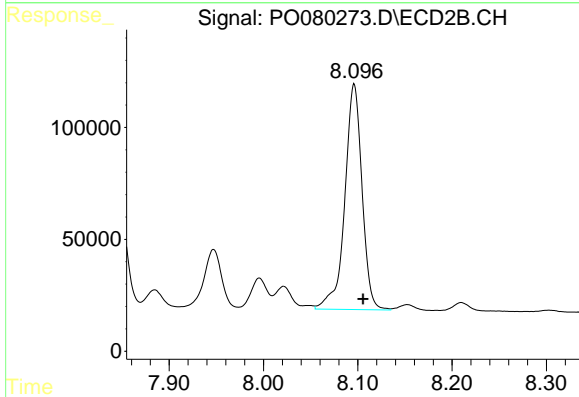
R.T.: 7.847 min  
 Delta R.T.: -0.010 min  
 Response: 571554  
 Conc: 482.34 ng/ml



#35 AR-1260-5

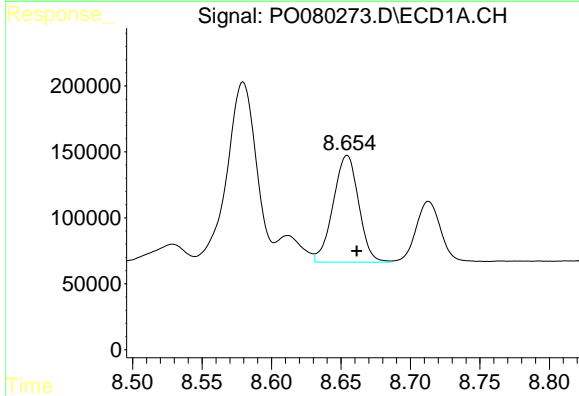
R.T.: 9.220 min  
 Delta R.T.: -0.007 min  
 Response: 2306602  
 Conc: 451.13 ng/ml

Instrument :  
 ECD\_O  
 ClientSampleId :



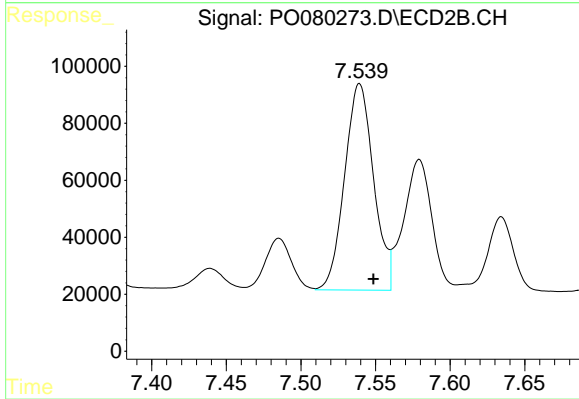
#35 AR-1260-5

R.T.: 8.096 min  
 Delta R.T.: -0.010 min  
 Response: 1280813  
 Conc: 484.85 ng/ml



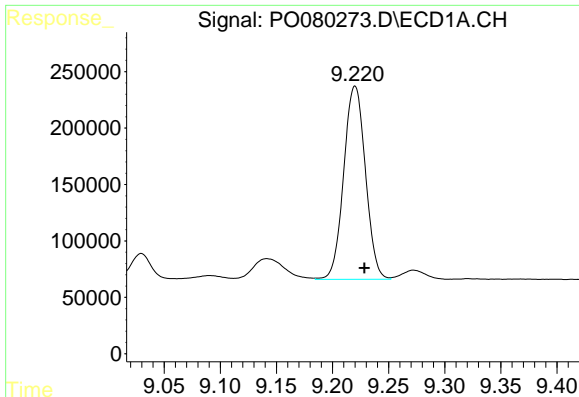
#36 AR-1262-1

R.T.: 8.654 min  
 Delta R.T.: -0.007 min  
 Response: 1033964  
 Conc: 323.34 ng/ml



#36 AR-1262-1

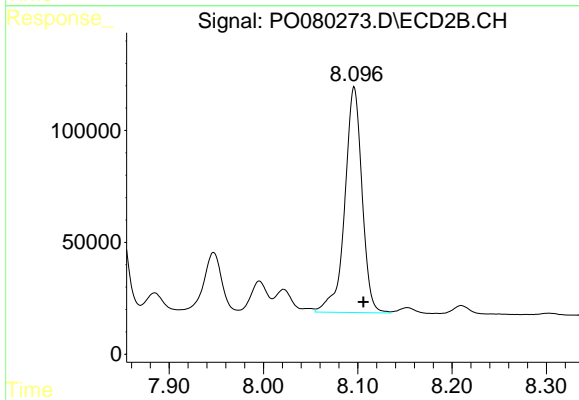
R.T.: 7.539 min  
 Delta R.T.: -0.009 min  
 Response: 980313  
 Conc: 1164.61 ng/ml



#37 AR-1262-2

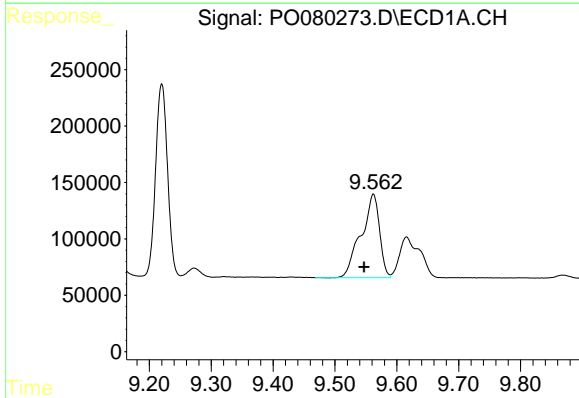
R.T.: 9.220 min  
 Delta R.T.: -0.008 min  
 Response: 2306602  
 Conc: 425.89 ng/ml

Instrument :  
 ECD\_O  
 ClientSampled :



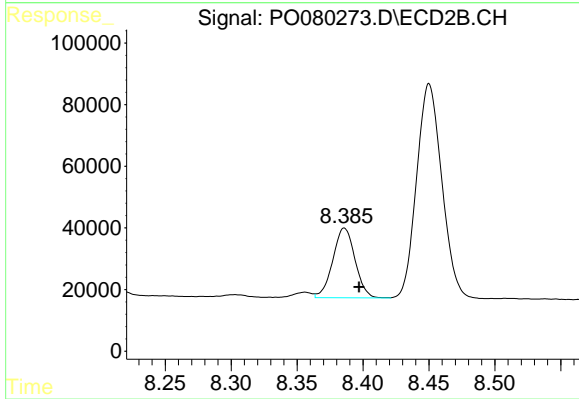
#37 AR-1262-2

R.T.: 8.096 min  
 Delta R.T.: -0.010 min  
 Response: 1280813  
 Conc: 477.01 ng/ml



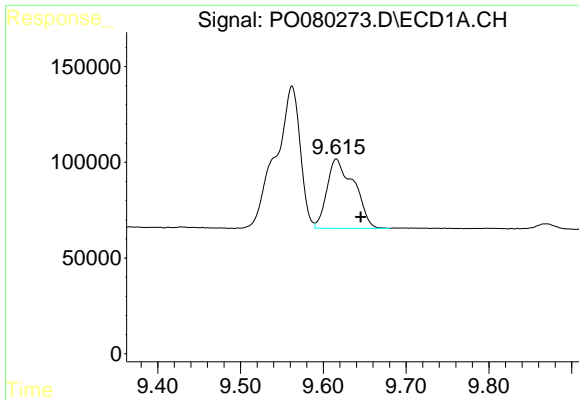
#38 AR-1262-3

R.T.: 9.562 min  
 Delta R.T.: 0.015 min  
 Response: 1531559  
 Conc: 404.94 ng/ml



#38 AR-1262-3

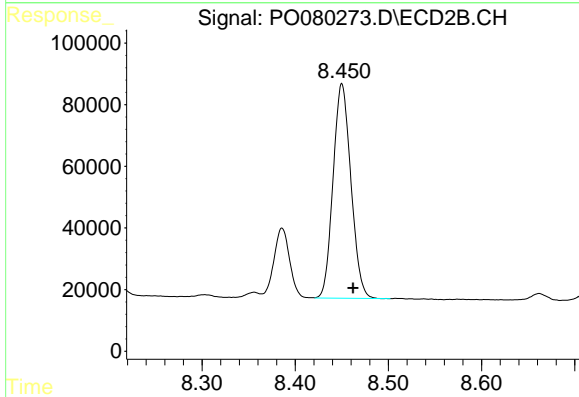
R.T.: 8.386 min  
 Delta R.T.: -0.011 min  
 Response: 265561  
 Conc: 239.10 ng/ml



#39 AR-1262-4

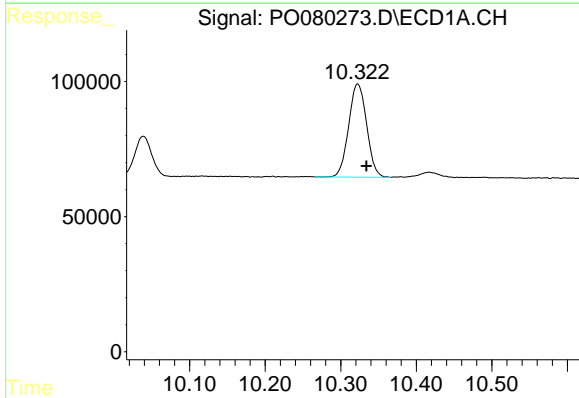
R.T.: 9.616 min  
Delta R.T.: -0.030 min  
Response: 823584  
Conc: 291.47 ng/ml

Instrument :  
ECD\_O  
ClientSampled :



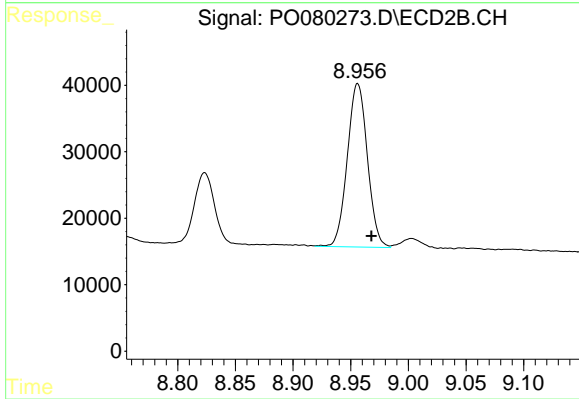
#39 AR-1262-4

R.T.: 8.450 min  
Delta R.T.: -0.012 min  
Response: 926464  
Conc: 463.37 ng/ml



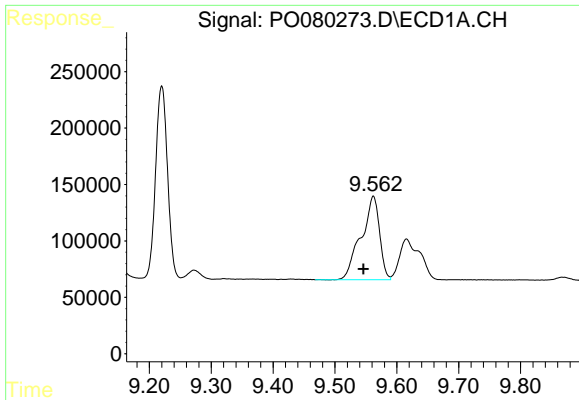
#40 AR-1262-5

R.T.: 10.323 min  
Delta R.T.: -0.011 min  
Response: 570091  
Conc: 299.80 ng/ml



#40 AR-1262-5

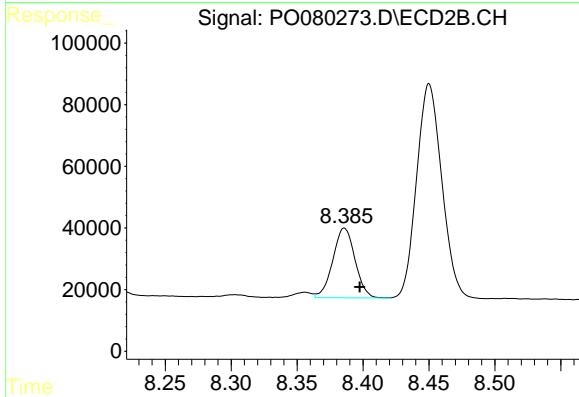
R.T.: 8.956 min  
Delta R.T.: -0.012 min  
Response: 297800  
Conc: 305.29 ng/ml



#41 AR-1268-1

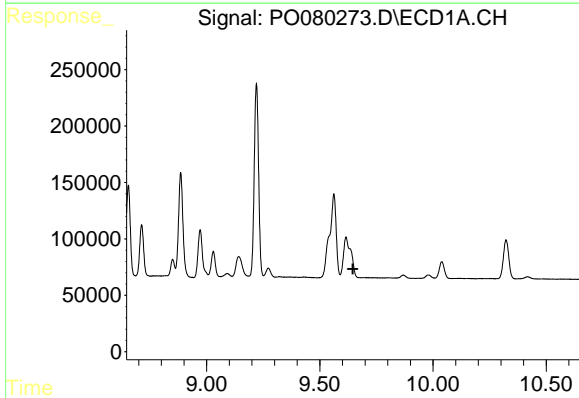
R.T.: 9.562 min  
 Delta R.T.: 0.016 min  
 Response: 1531559  
 Conc: 236.57 ng/ml

Instrument :  
 ECD\_O  
 ClientSampled :



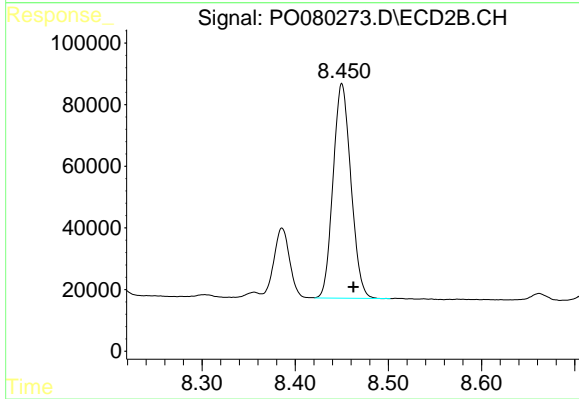
#41 AR-1268-1

R.T.: 8.386 min  
 Delta R.T.: -0.011 min  
 Response: 265561  
 Conc: 87.40 ng/ml



#42 AR-1268-2

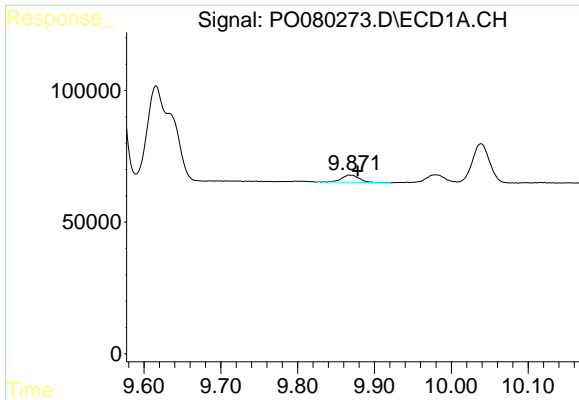
R.T.: 0.000 min  
 Exp R.T. : 9.646 min  
 Response: 0  
 Conc: N.D.



#42 AR-1268-2

R.T.: 8.450 min  
 Delta R.T.: -0.012 min  
 Response: 926464  
 Conc: 340.49 ng/ml

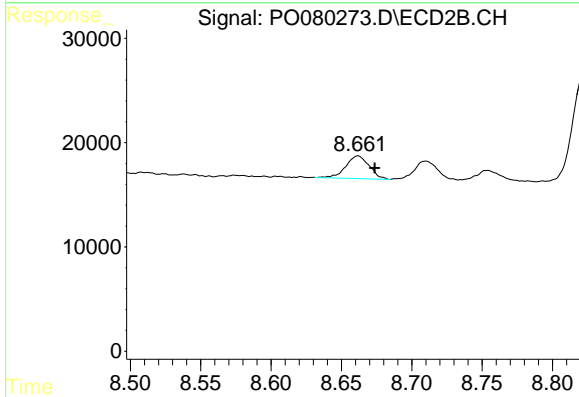




#43 AR-1268-3

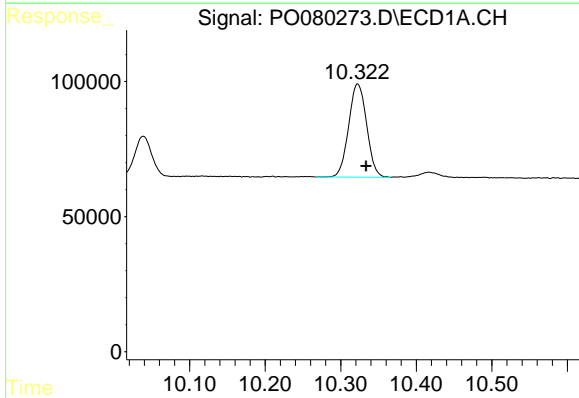
R.T.: 9.869 min  
 Delta R.T.: -0.009 min  
 Response: 42575  
 Conc: 8.47 ng/ml

Instrument :  
 ECD\_O  
 ClientSampled :



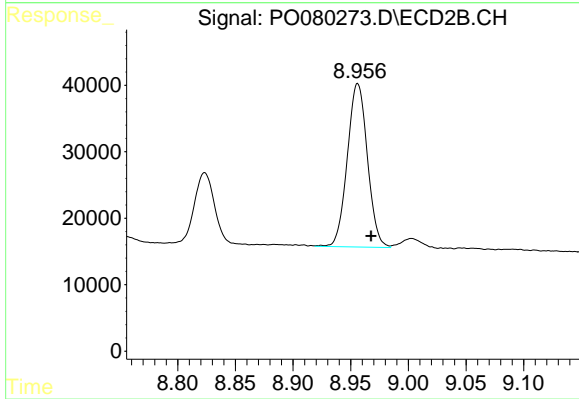
#43 AR-1268-3

R.T.: 8.662 min  
 Delta R.T.: -0.012 min  
 Response: 25280  
 Conc: 10.91 ng/ml



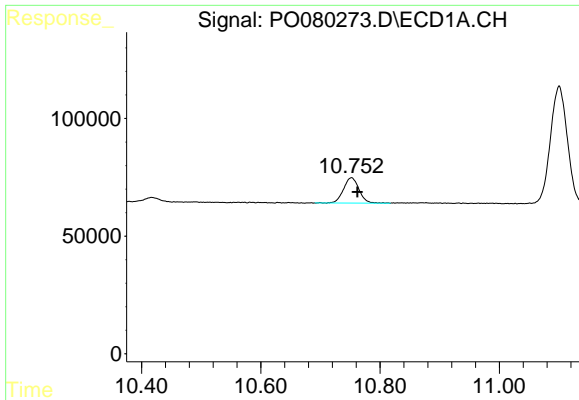
#44 AR-1268-4

R.T.: 10.323 min  
 Delta R.T.: -0.011 min  
 Response: 570091  
 Conc: 248.12 ng/ml



#44 AR-1268-4

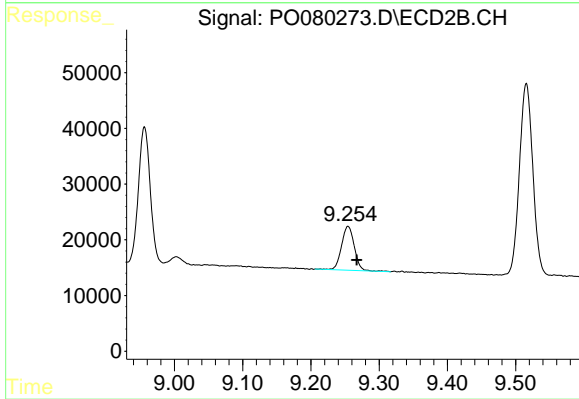
R.T.: 8.956 min  
 Delta R.T.: -0.012 min  
 Response: 297800  
 Conc: 278.16 ng/ml



#45 AR-1268-5

R.T.: 10.752 min  
Delta R.T.: -0.010 min  
Response: 193696  
Conc: 11.62 ng/ml

Instrument :  
ECD\_O  
ClientSampled :



#45 AR-1268-5

R.T.: 9.254 min  
Delta R.T.: -0.013 min  
Response: 102599  
Conc: 14.77 ng/ml