

Data Path : Z:\pestpcbsrv\HPCHEM1\ECD_0\Data\P0080621\
 Data File : P0080295.D
 Signal(s) : Signal #1: ECD1A.CH Signal #2: ECD2B.CH
 Acq On : 07 Aug 2021 00:58
 Operator : DD\AJ
 Sample : M3297-05
 Misc :
 ALS Vial : 45 Sample Multiplier: 1

Instrument :
 ECD_O
 ClientSampleId :

Integration File signal 1: autoint1.e
 Integration File signal 2: autoint2.e
 Quant Time: Aug 09 01:47:05 2021
 Quant Method : Z:\pestpcbsrv\HPCHEM1\ECD_0\methods\P0072821.M
 Quant Title : GC EXTRACTABLES
 QLast Update : Wed Jul 28 18:45:36 2021
 Response via : Initial Calibration
 Integrator: ChemStation 6890 Scale Mode: Small noise peaks clipped

Volume Inj. : 2 µl
 Signal #1 Phase : ZB-MR1 Signal #2 Phase: ZB-MR2
 Signal #1 Info : 30Mx0.32mmx 0.50µ Signal #2 Info : 30M x 0.32mm x 0.25µm

Compound	RT#1	RT#2	Resp#1	Resp#2	ng/ml	ng/ml
System Monitoring Compounds						
1) SA Tetrachlo...	4.994	4.115	436951	650286	7.251	28.395 #
2) SA Decachlor...	11.097	9.514f	269107	129593	5.737	6.236
Target Compounds						
3) L1 AR-1016-1	6.326	5.408	19558	8130	8.897	8.649
4) L1 AR-1016-2	0.000	5.408	0	8130	N.D.	6.390 #
5) L1 AR-1016-3	6.408	0.000	48824	0	25.945	N.D. #
8) L2 AR-1221-1	5.246	0.000	85897	0	133.303	N.D. #
12) L3 AR-1232-2	6.012f	5.408	22653	8130	32.428	14.457 #
13) L3 AR-1232-3	6.326f	0.000	19558	0	14.675	N.D. #
16) L4 AR-1242-1	6.326	5.408	19558	8130	11.735	11.415
17) L4 AR-1242-2	6.326f	5.408	19558	8130	8.504	8.395
18) L4 AR-1242-3	6.408	0.000	48824	0	34.393	N.D. #
20) L4 AR-1242-5	7.305	6.277	94242	11079	74.231	17.027 #
21) L5 AR-1248-1	6.326	5.408	19558	8130	15.428	14.722
24) L5 AR-1248-4	7.265	0.000	58552	0	25.013	N.D. #
25) L5 AR-1248-5	7.305	6.313	94242	9776	41.443	10.662 #
26) L6 AR-1254-1	7.237	6.277	215210	11079	98.522	8.170 #
27) L6 AR-1254-2	0.000	6.427f	0	8954	N.D.	7.467 #
30) L6 AR-1254-5	8.582	7.536	30486	7512	11.463	4.690 #
32) L7 AR-1260-2	0.000	7.197	0	7709	N.D.	5.039 #
33) L7 AR-1260-3	0.000	7.355	0	13259	N.D.	9.081 #
35) L7 AR-1260-5	0.000	8.094	0	9766	N.D.	3.697 #
36) L8 AR-1262-1	0.000	7.536	0	7512	N.D.	8.925 #
37) L8 AR-1262-2	0.000	8.094	0	9766	N.D.	3.637 #
39) L8 AR-1262-4	0.000	8.448	0	8383	N.D.	4.193 #
42) L9 AR-1268-2	0.000	8.448	0	8383	N.D.	3.081 #

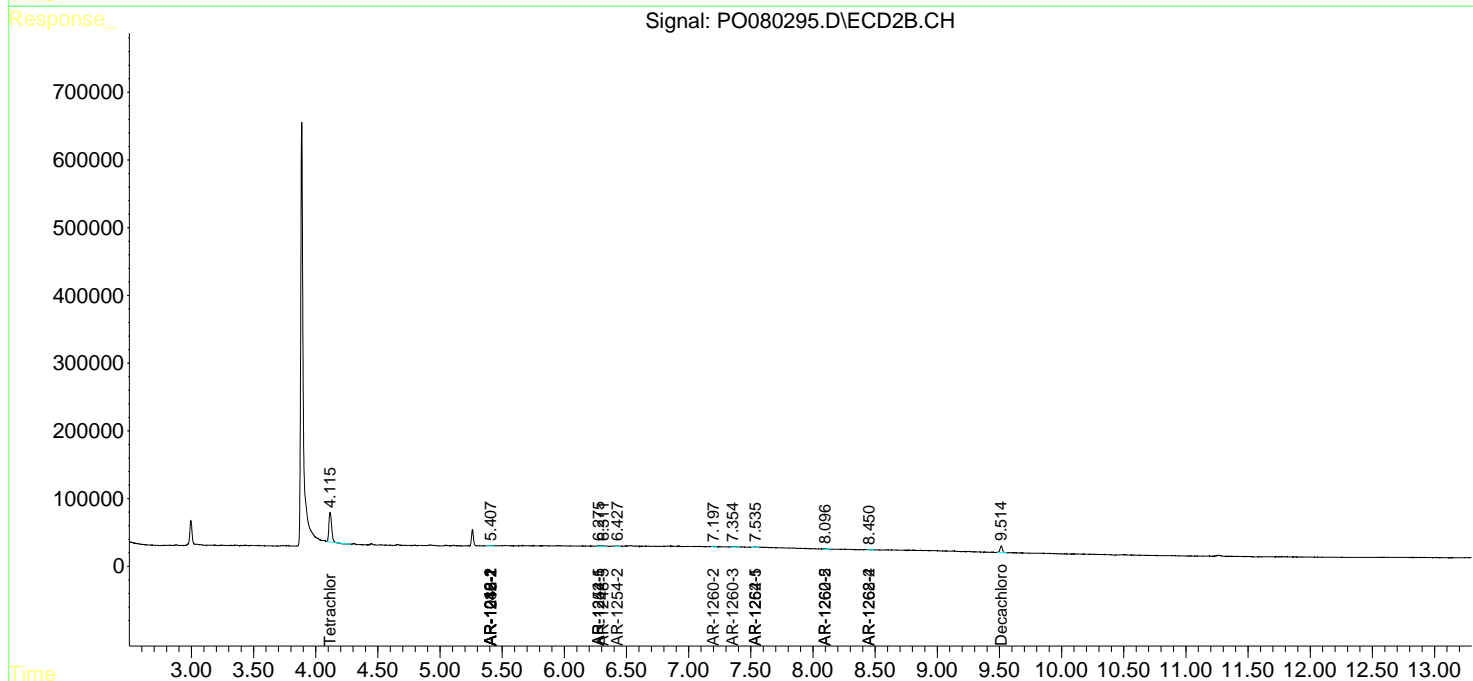
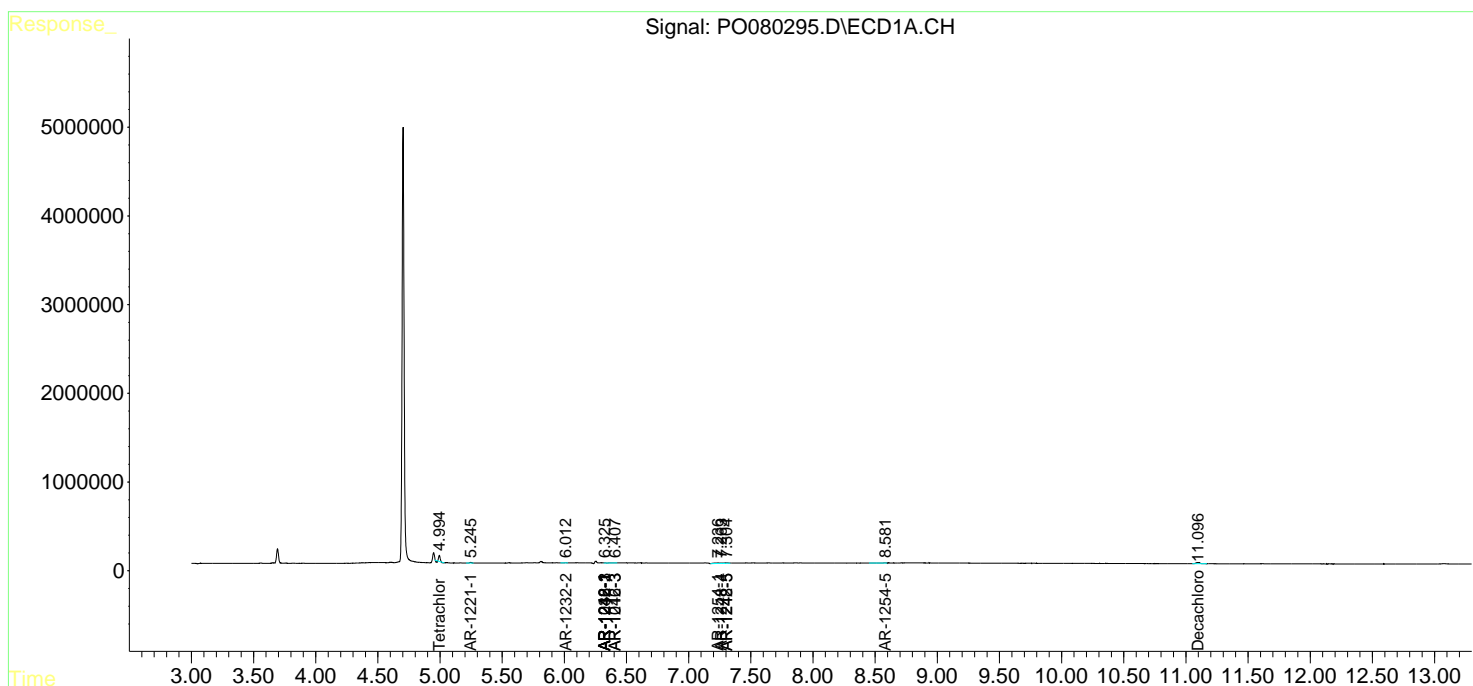
(f)=RT Delta > 1/2 Window (#)=Amounts differ by > 25% (m)=manual int.

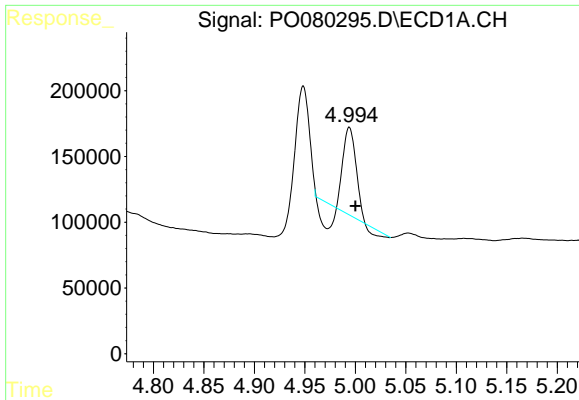
Data Path : Z:\pestpcbsrv\HPCHEM1\ECD_0\Data\PO080621\
 Data File : PO080295.D
 Signal(s) : Signal #1: ECD1A.CH Signal #2: ECD2B.CH
 Acq On : 07 Aug 2021 00:58
 Operator : DD\AJ
 Sample : M3297-05
 Misc :
 ALS Vial : 45 Sample Multiplier: 1

Instrument :
 ECD_O
 ClientSampled :

Integration File signal 1: autoint1.e
 Integration File signal 2: autoint2.e
 Quant Time: Aug 09 01:47:05 2021
 Quant Method : Z:\pestpcbsrv\HPCHEM1\ECD_0\methods\PO072821.M
 Quant Title : GC EXTRACTABLES
 QLast Update : Wed Jul 28 18:45:36 2021
 Response via : Initial Calibration
 Integrator: ChemStation 6890 Scale Mode: Small noise peaks clipped

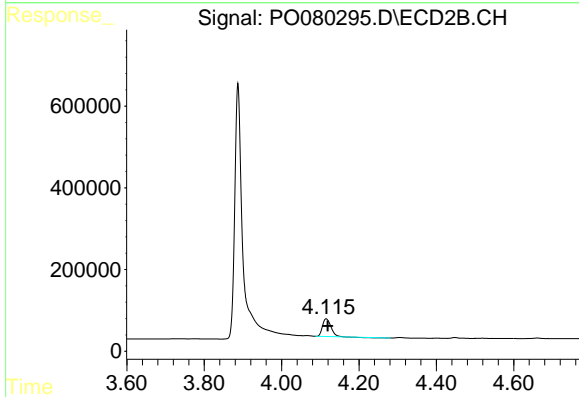
Volume Inj. : 2 µl
 Signal #1 Phase : ZB-MR1 Signal #2 Phase: ZB-MR2
 Signal #1 Info : 30Mx0.32mmx 0.50µ Signal #2 Info : 30M x 0.32mm x 0.25µm



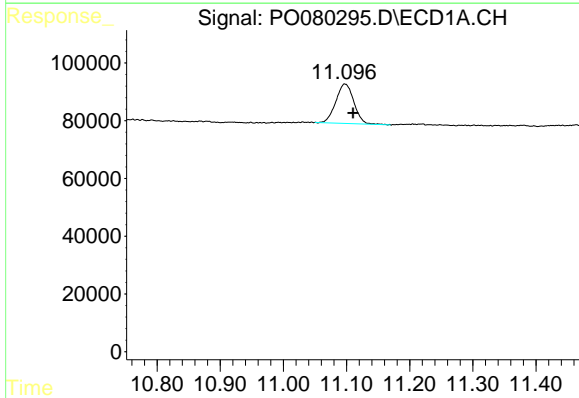


#1 Tetrachloro-m-xylene
 R.T.: 4.994 min
 Delta R.T.: -0.006 min
 Response: 436951
 Conc: 7.25 ng/ml

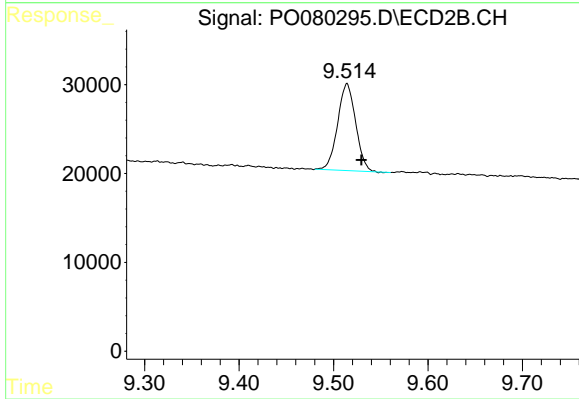
Instrument :
 ECD_O
 ClientSampleId :



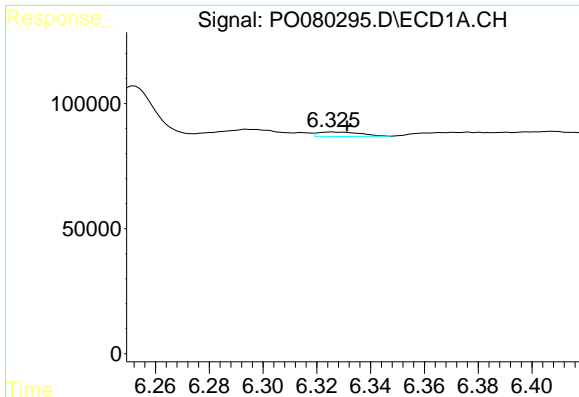
#1 Tetrachloro-m-xylene
 R.T.: 4.115 min
 Delta R.T.: -0.004 min
 Response: 650286
 Conc: 28.40 ng/ml



#2 Decachlorobiphenyl
 R.T.: 11.097 min
 Delta R.T.: -0.013 min
 Response: 269107
 Conc: 5.74 ng/ml



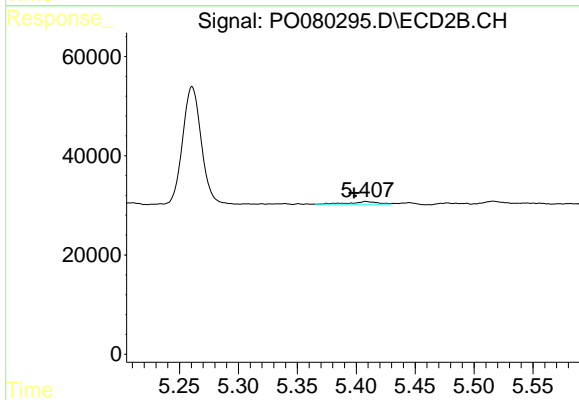
#2 Decachlorobiphenyl
 R.T.: 9.514 min
 Delta R.T.: -0.015 min
 Response: 129593
 Conc: 6.24 ng/ml



#3 AR-1016-1

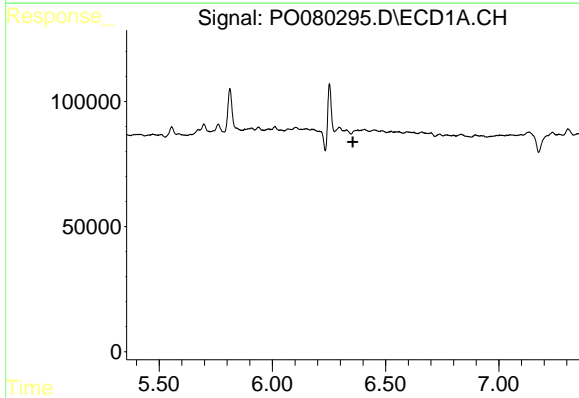
R.T.: 6.326 min
 Delta R.T.: -0.006 min
 Response: 19558
 Conc: 8.90 ng/ml

Instrument :
 ECD_O
 ClientSampleId :



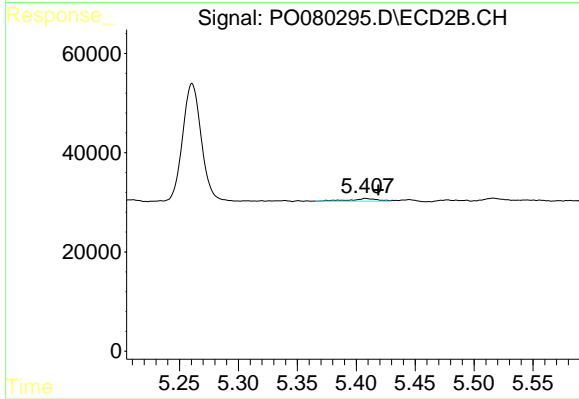
#3 AR-1016-1

R.T.: 5.408 min
 Delta R.T.: 0.010 min
 Response: 8130
 Conc: 8.65 ng/ml



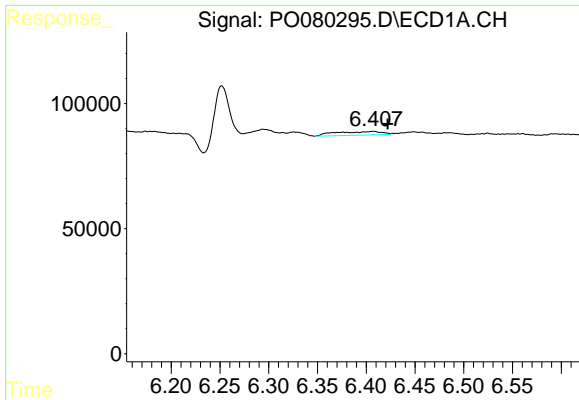
#4 AR-1016-2

R.T.: 0.000 min
 Exp R.T. : 6.356 min
 Response: 0
 Conc: N.D.



#4 AR-1016-2

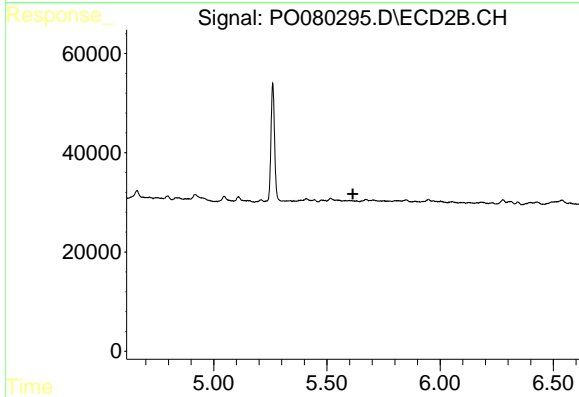
R.T.: 5.408 min
 Delta R.T.: -0.011 min
 Response: 8130
 Conc: 6.39 ng/ml



#5 AR-1016-3

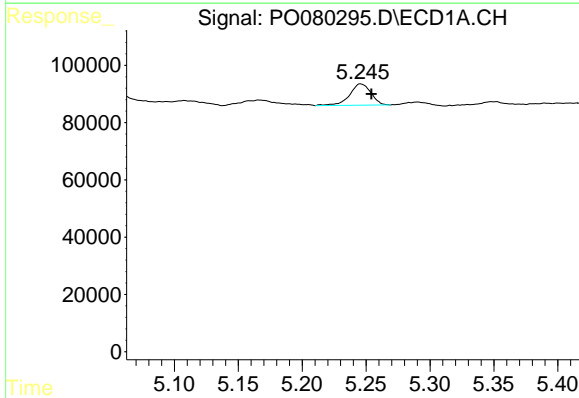
R.T.: 6.408 min
 Delta R.T.: -0.014 min
 Response: 48824
 Conc: 25.95 ng/ml

Instrument :
 ECD_O
 ClientSampled :



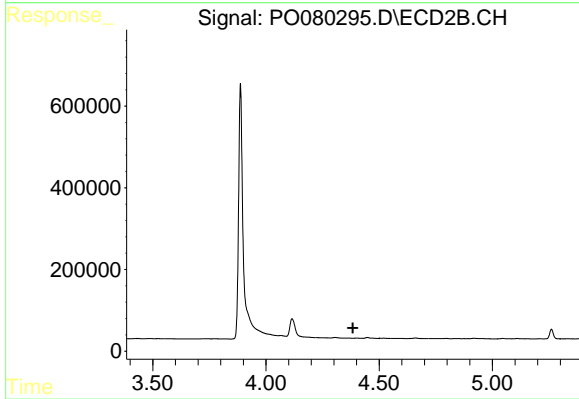
#5 AR-1016-3

R.T.: 0.000 min
 Exp R.T. : 5.614 min
 Response: 0
 Conc: N.D.



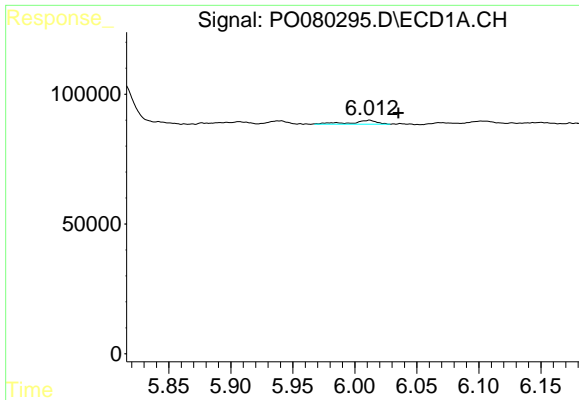
#8 AR-1221-1

R.T.: 5.246 min
 Delta R.T.: -0.008 min
 Response: 85897
 Conc: 133.30 ng/ml



#8 AR-1221-1

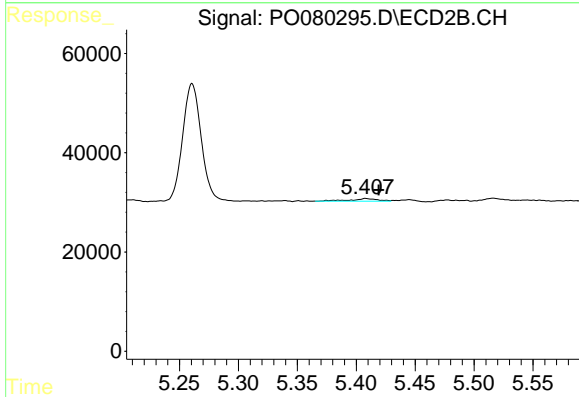
R.T.: 0.000 min
 Exp R.T. : 4.384 min
 Response: 0
 Conc: N.D.



#12 AR-1232-2

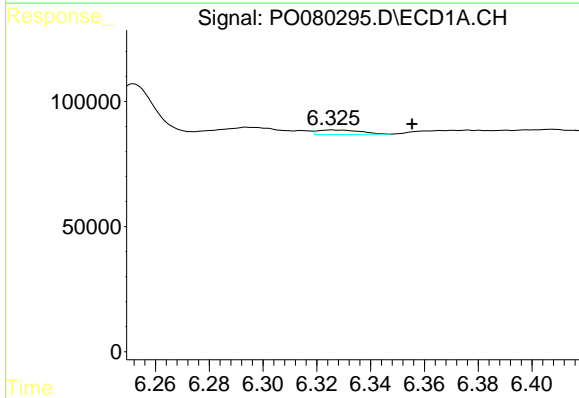
R.T.: 6.012 min
 Delta R.T.: -0.023 min
 Response: 22653
 Conc: 32.43 ng/ml

Instrument :
 ECD_O
 ClientSampleId :



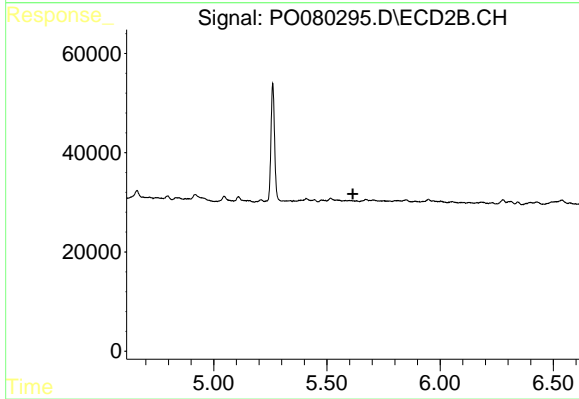
#12 AR-1232-2

R.T.: 5.408 min
 Delta R.T.: -0.011 min
 Response: 8130
 Conc: 14.46 ng/ml



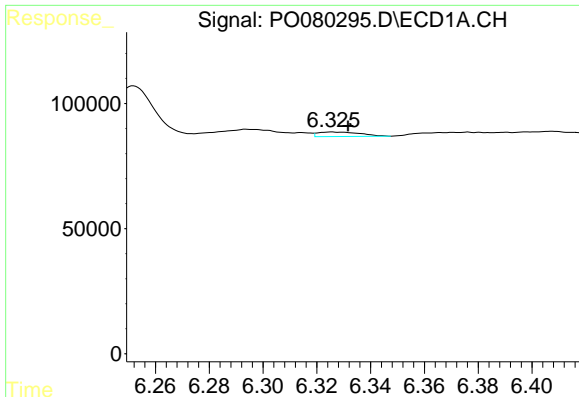
#13 AR-1232-3

R.T.: 6.326 min
 Delta R.T.: -0.030 min
 Response: 19558
 Conc: 14.67 ng/ml



#13 AR-1232-3

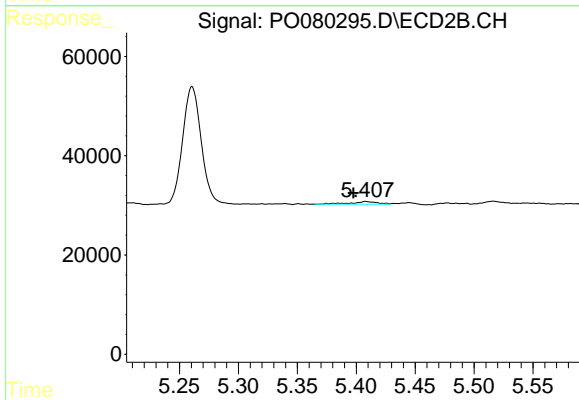
R.T.: 0.000 min
 Exp R.T. : 5.615 min
 Response: 0
 Conc: N.D.



#16 AR-1242-1

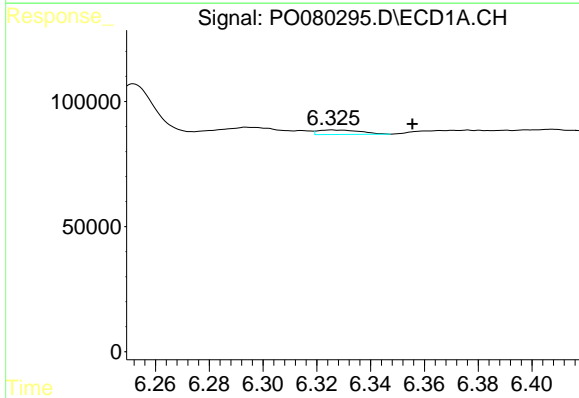
R.T.: 6.326 min
 Delta R.T.: -0.006 min
 Response: 19558
 Conc: 11.73 ng/ml

Instrument :
 ECD_O
 ClientSampled :



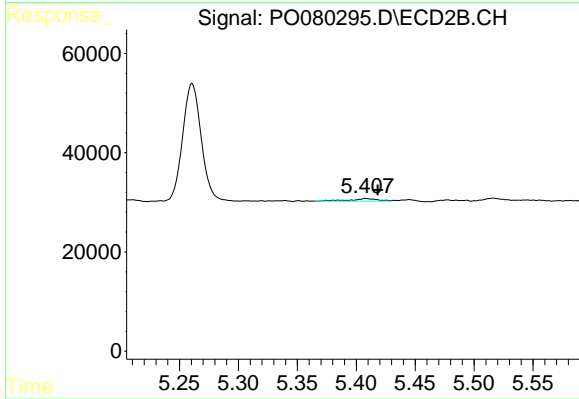
#16 AR-1242-1

R.T.: 5.408 min
 Delta R.T.: 0.010 min
 Response: 8130
 Conc: 11.41 ng/ml



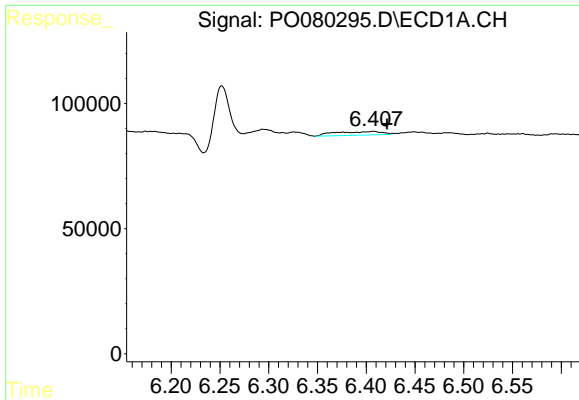
#17 AR-1242-2

R.T.: 6.326 min
 Delta R.T.: -0.030 min
 Response: 19558
 Conc: 8.50 ng/ml



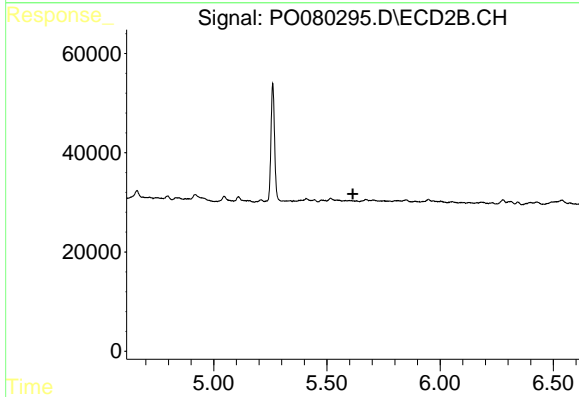
#17 AR-1242-2

R.T.: 5.408 min
 Delta R.T.: -0.010 min
 Response: 8130
 Conc: 8.40 ng/ml

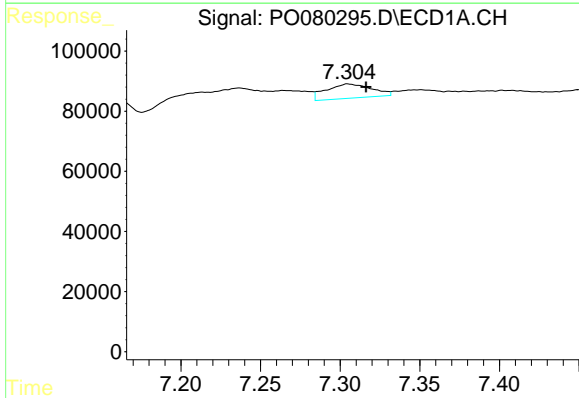


#18 AR-1242-3
 R.T.: 6.408 min
 Delta R.T.: -0.014 min
 Response: 48824
 Conc: 34.39 ng/ml

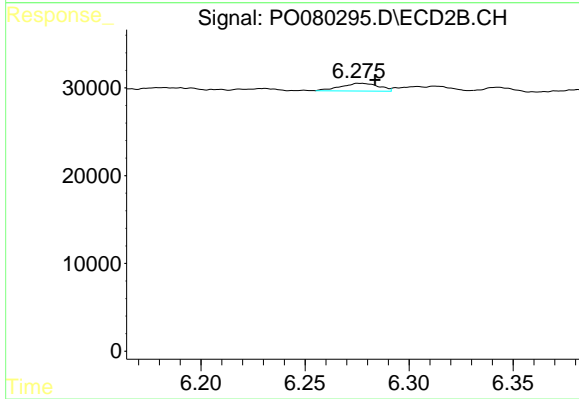
Instrument :
 ECD_O
 ClientSampled :



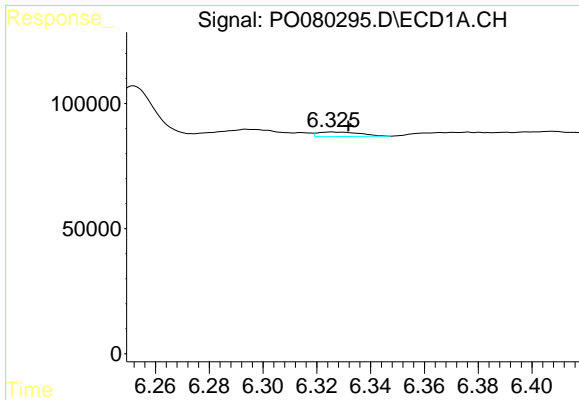
#18 AR-1242-3
 R.T.: 0.000 min
 Exp R.T. : 5.614 min
 Response: 0
 Conc: N.D.



#20 AR-1242-5
 R.T.: 7.305 min
 Delta R.T.: -0.011 min
 Response: 94242
 Conc: 74.23 ng/ml



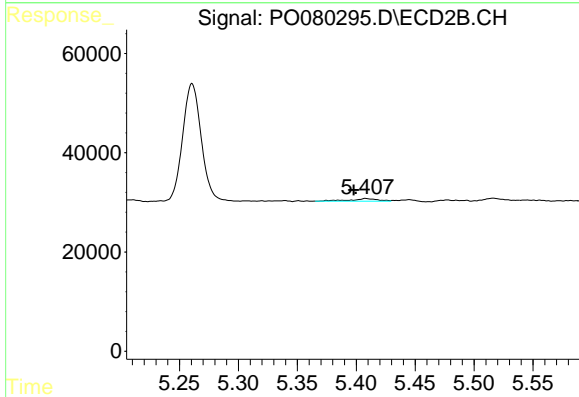
#20 AR-1242-5
 R.T.: 6.277 min
 Delta R.T.: -0.007 min
 Response: 11079
 Conc: 17.03 ng/ml



#21 AR-1248-1

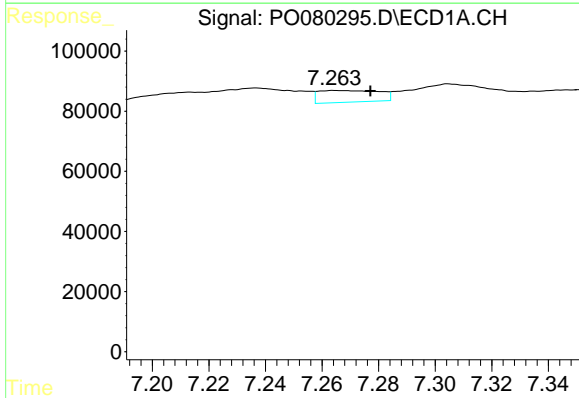
R.T.: 6.326 min
 Delta R.T.: -0.006 min
 Response: 19558
 Conc: 15.43 ng/ml

Instrument :
 ECD_O
 ClientSampleId :



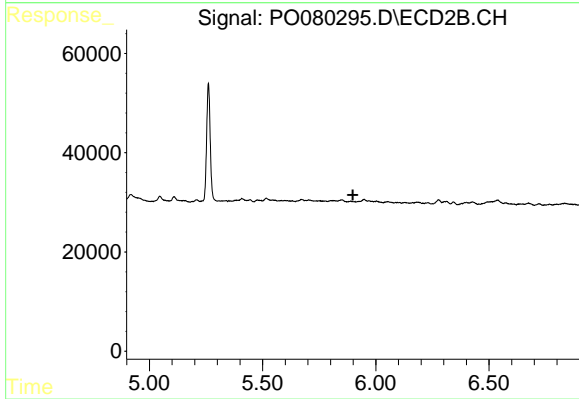
#21 AR-1248-1

R.T.: 5.408 min
 Delta R.T.: 0.010 min
 Response: 8130
 Conc: 14.72 ng/ml



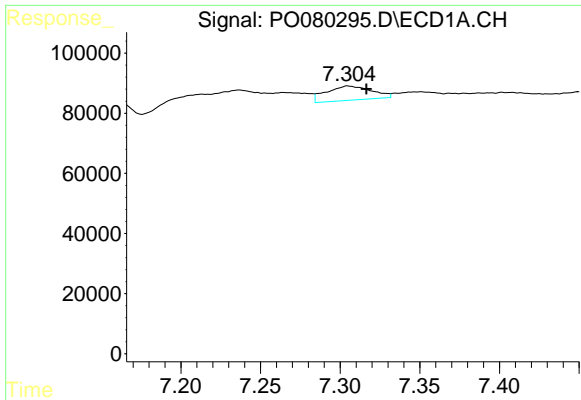
#24 AR-1248-4

R.T.: 7.265 min
 Delta R.T.: -0.013 min
 Response: 58552
 Conc: 25.01 ng/ml



#24 AR-1248-4

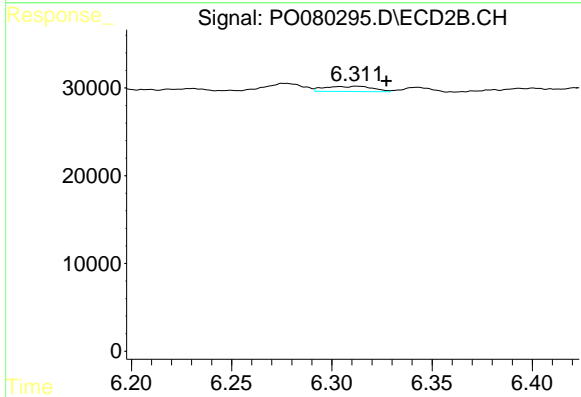
R.T.: 0.000 min
 Exp R.T.: 5.899 min
 Response: 0
 Conc: N.D.



#25 AR-1248-5

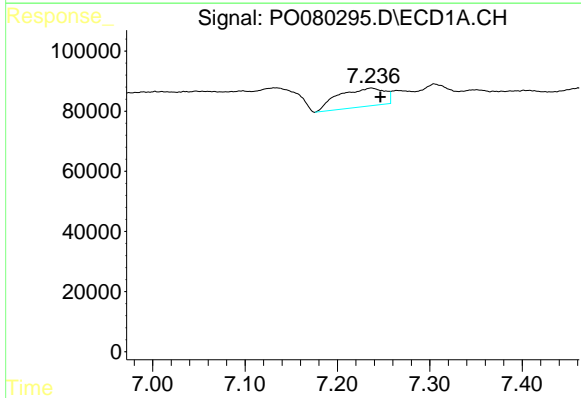
R.T.: 7.305 min
 Delta R.T.: -0.011 min
 Response: 94242
 Conc: 41.44 ng/ml

Instrument :
 ECD_O
 ClientSampled :



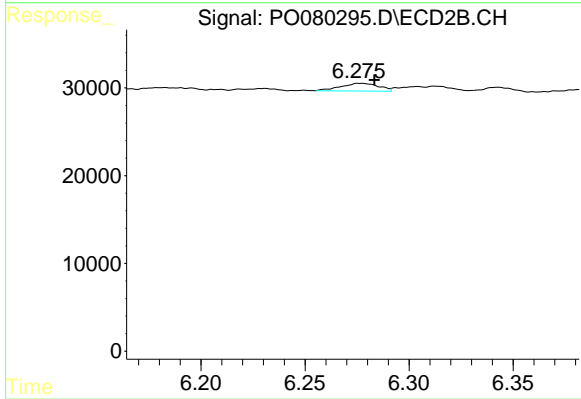
#25 AR-1248-5

R.T.: 6.313 min
 Delta R.T.: -0.014 min
 Response: 9776
 Conc: 10.66 ng/ml



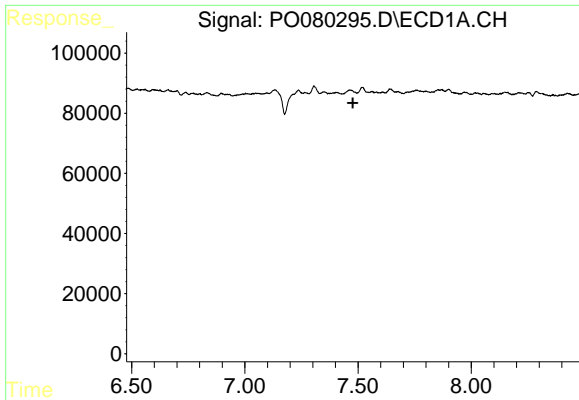
#26 AR-1254-1

R.T.: 7.237 min
 Delta R.T.: -0.010 min
 Response: 215210
 Conc: 98.52 ng/ml



#26 AR-1254-1

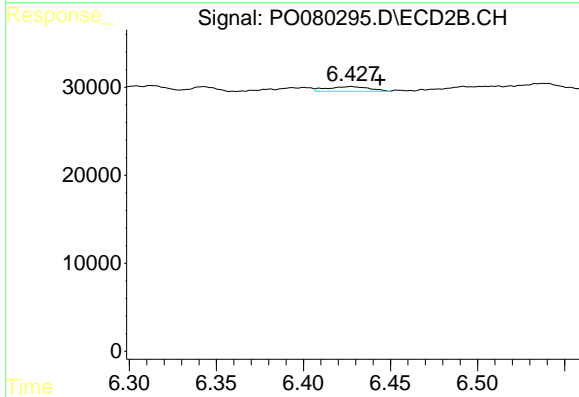
R.T.: 6.277 min
 Delta R.T.: -0.007 min
 Response: 11079
 Conc: 8.17 ng/ml



#27 AR-1254-2

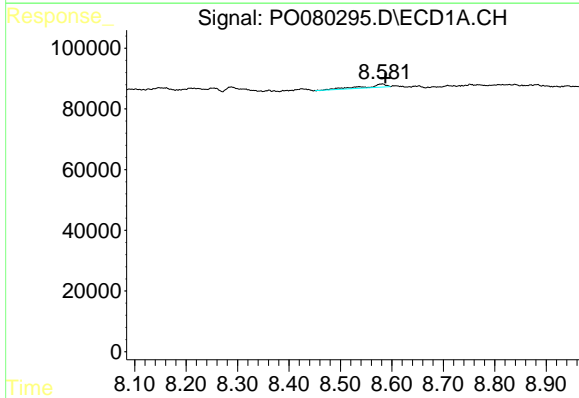
R.T.: 0.000 min
 Exp R.T.: 7.477 min
 Response: 0
 Conc: N.D.

Instrument :
 ECD_O
 ClientSampleId :



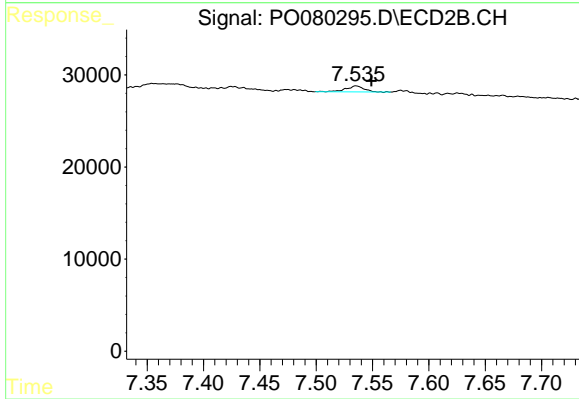
#27 AR-1254-2

R.T.: 6.427 min
 Delta R.T.: -0.017 min
 Response: 8954
 Conc: 7.47 ng/ml



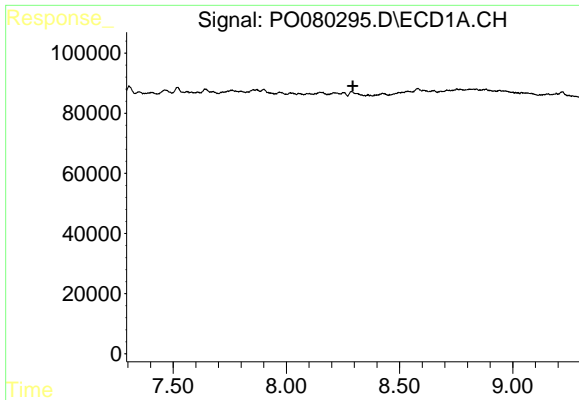
#30 AR-1254-5

R.T.: 8.582 min
 Delta R.T.: -0.006 min
 Response: 30486
 Conc: 11.46 ng/ml



#30 AR-1254-5

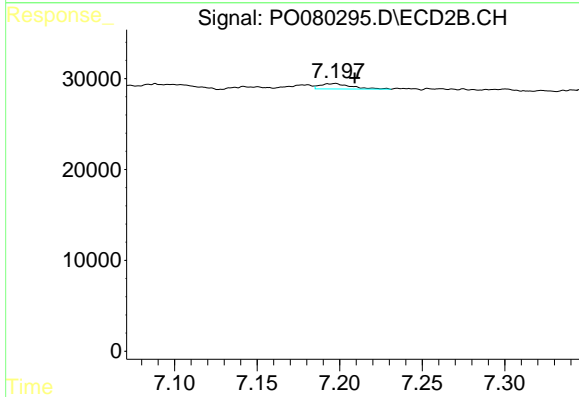
R.T.: 7.536 min
 Delta R.T.: -0.013 min
 Response: 7512
 Conc: 4.69 ng/ml



#32 AR-1260-2

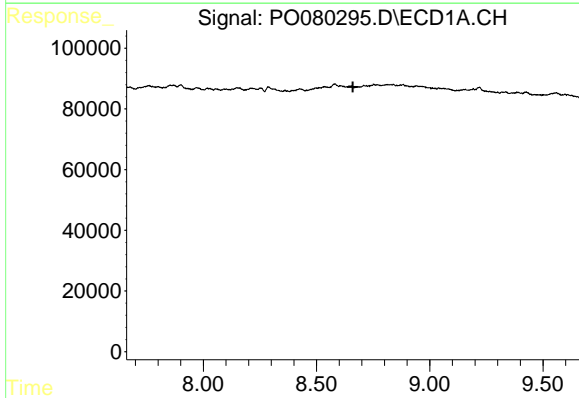
R.T.: 0.000 min
 Exp R.T.: 8.294 min
 Response: 0
 Conc: N.D.

Instrument :
 ECD_O
 ClientSampleId :



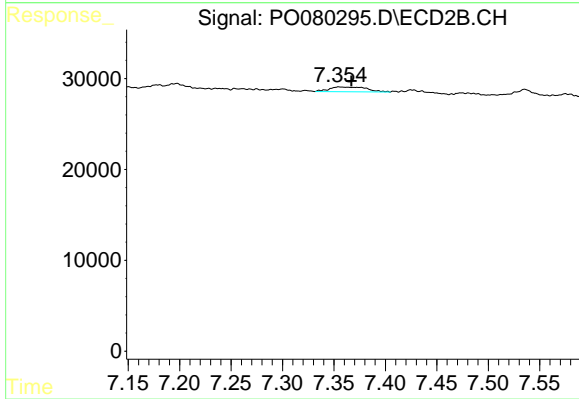
#32 AR-1260-2

R.T.: 7.197 min
 Delta R.T.: -0.012 min
 Response: 7709
 Conc: 5.04 ng/ml



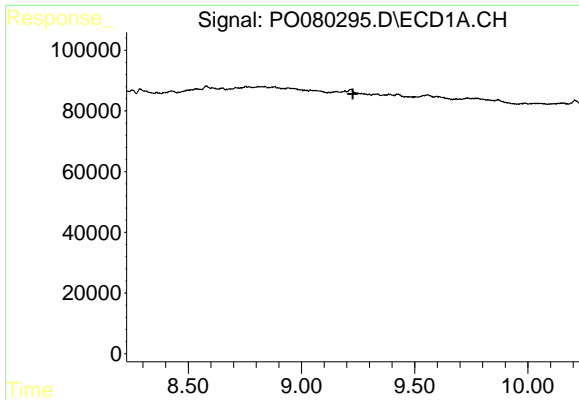
#33 AR-1260-3

R.T.: 0.000 min
 Exp R.T.: 8.661 min
 Response: 0
 Conc: N.D.



#33 AR-1260-3

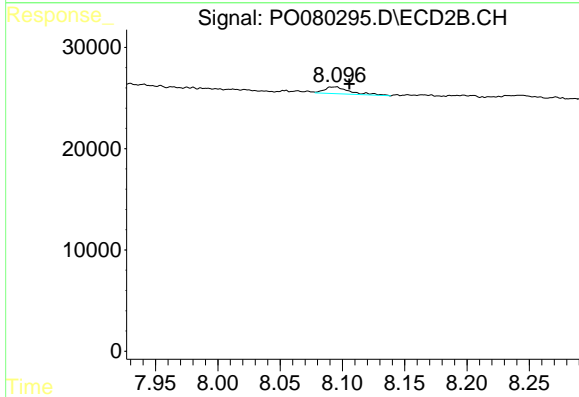
R.T.: 7.355 min
 Delta R.T.: -0.012 min
 Response: 13259
 Conc: 9.08 ng/ml



#35 AR-1260-5

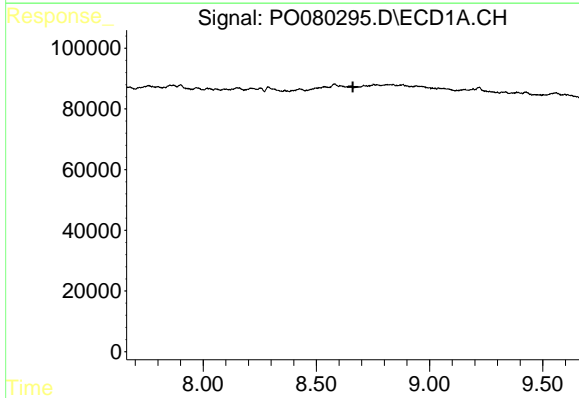
R.T.: 0.000 min
 Exp R.T. : 9.227 min
 Response: 0
 Conc: N.D.

Instrument :
 ECD_O
 ClientSampled :



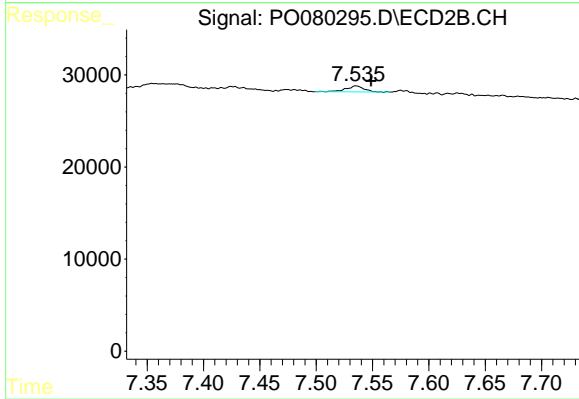
#35 AR-1260-5

R.T.: 8.094 min
 Delta R.T.: -0.011 min
 Response: 9766
 Conc: 3.70 ng/ml



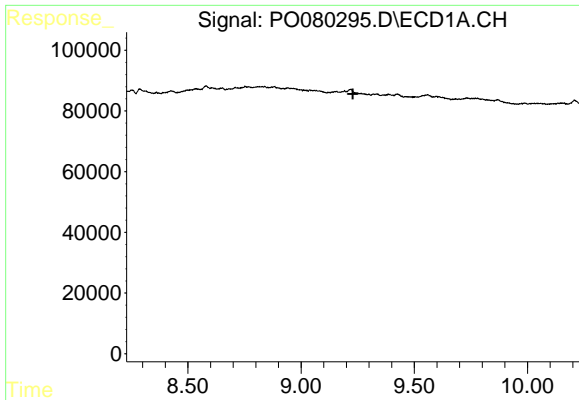
#36 AR-1262-1

R.T.: 0.000 min
 Exp R.T. : 8.661 min
 Response: 0
 Conc: N.D.



#36 AR-1262-1

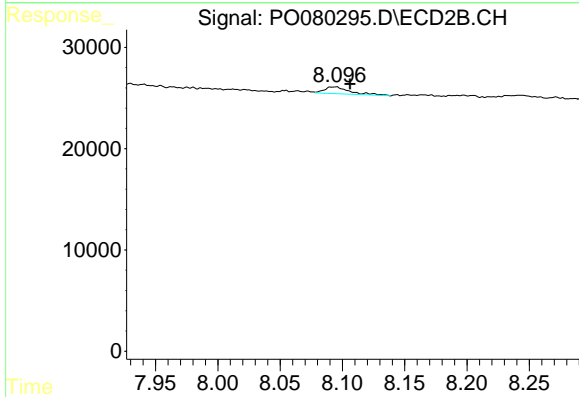
R.T.: 7.536 min
 Delta R.T.: -0.013 min
 Response: 7512
 Conc: 8.92 ng/ml



#37 AR-1262-2

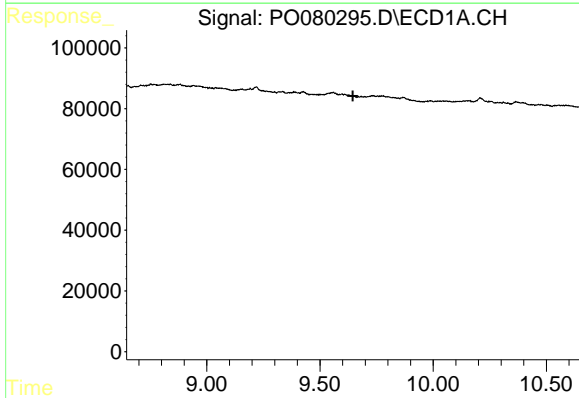
R.T.: 0.000 min
 Exp R.T.: 9.228 min
 Response: 0
 Conc: N.D.

Instrument :
 ECD_O
 ClientSampled :



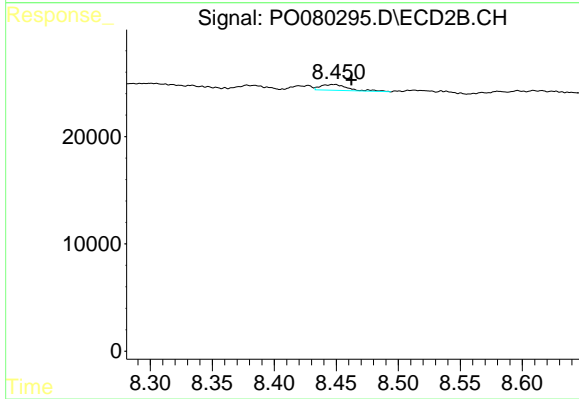
#37 AR-1262-2

R.T.: 8.094 min
 Delta R.T.: -0.012 min
 Response: 9766
 Conc: 3.64 ng/ml



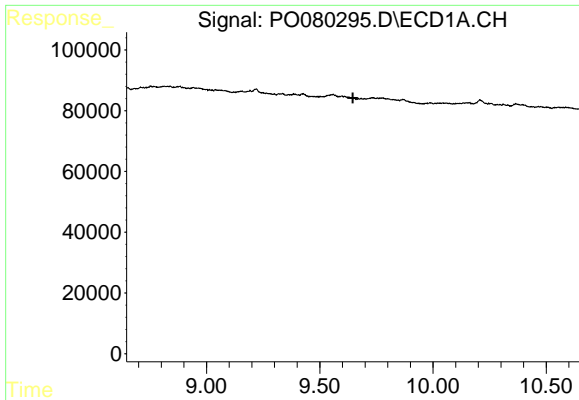
#39 AR-1262-4

R.T.: 0.000 min
 Exp R.T.: 9.645 min
 Response: 0
 Conc: N.D.



#39 AR-1262-4

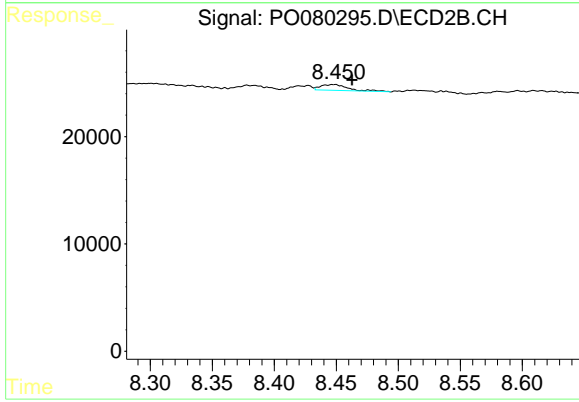
R.T.: 8.448 min
 Delta R.T.: -0.014 min
 Response: 8383
 Conc: 4.19 ng/ml



#42 AR-1268-2

R.T.: 0.000 min
Exp R.T. : 9.646 min
Response: 0
Conc: N.D.

Instrument :
ECD_O
ClientSampleId :



#42 AR-1268-2

R.T.: 8.448 min
Delta R.T.: -0.014 min
Response: 8383
Conc: 3.08 ng/ml