

Data Path : Z:\pestpcbsrv\HPCHEM1\ECD_0\Data\P0080723\
 Data File : P0096733.D
 Signal(s) : Signal #1: ECD1A.ch Signal #2: ECD2B.ch
 Acq On : 07 Aug 2023 19:46
 Operator : YP/AJ
 Sample : AR1248ICC1000
 Misc :
 ALS Vial : 15 Sample Multiplier: 1

Instrument :
 ECD_0
ClientSampleId :
 AR1248ICC1000

Integration File signal 1: autoint1.e
 Integration File signal 2: autoint2.e
 Quant Time: Aug 08 02:36:31 2023
 Quant Method : Z:\pestpcbsrv\HPCHEM1\ECD_0\methods\P0080723.M
 Quant Title : GC EXTRACTABLES
 QLast Update : Tue Aug 08 02:33:33 2023
 Response via : Initial Calibration
 Integrator: ChemStation

Volume Inj. : 2 µl
 Signal #1 Phase : ZB-MR1 Signal #2 Phase: ZB-MR2
 Signal #1 Info : 30Mx0.32mmx 0.50µ Signal #2 Info : 30M x 0.32mm x 0.25µm

Compound	RT#1	RT#2	Resp#1	Resp#2	ng/ml	ng/ml

System Monitoring Compounds						
1) SA Tetrachlo...	4.407	3.621	336.2E6	137.1E6	99.067	97.769
2) SA Decachlor...	10.340	8.645	215.5E6	111.1E6	96.493	95.193
Target Compounds						
21) L5 AR-1248-1	5.591	4.708	56200684	26832957	962.380	948.981
22) L5 AR-1248-2	5.870	4.946	87887557	38753275	957.944	945.136
23) L5 AR-1248-3	6.077	4.987	93352695	40635814	965.321	944.108
24) L5 AR-1248-4	6.488	5.159	87434661	47234173	963.692	949.078
25) L5 AR-1248-5	6.527	5.554	84686300	43348967	962.817	950.012

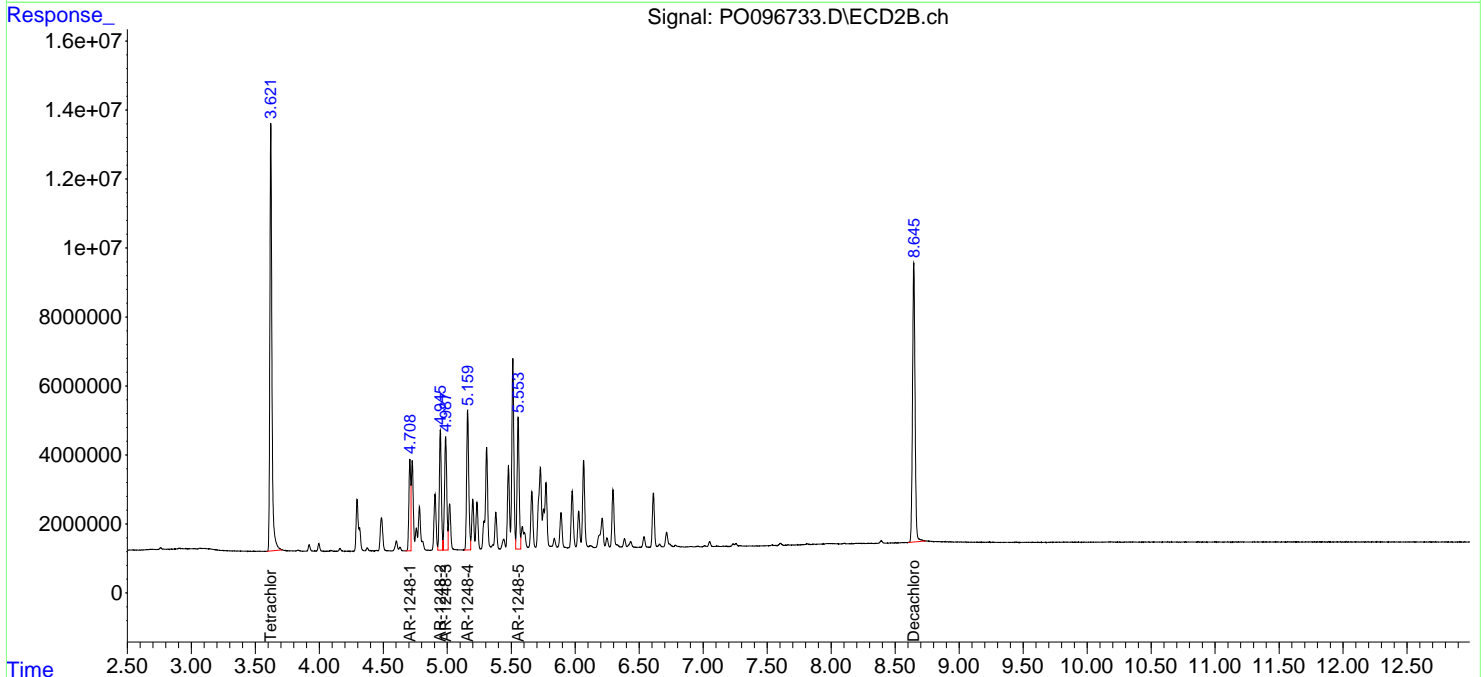
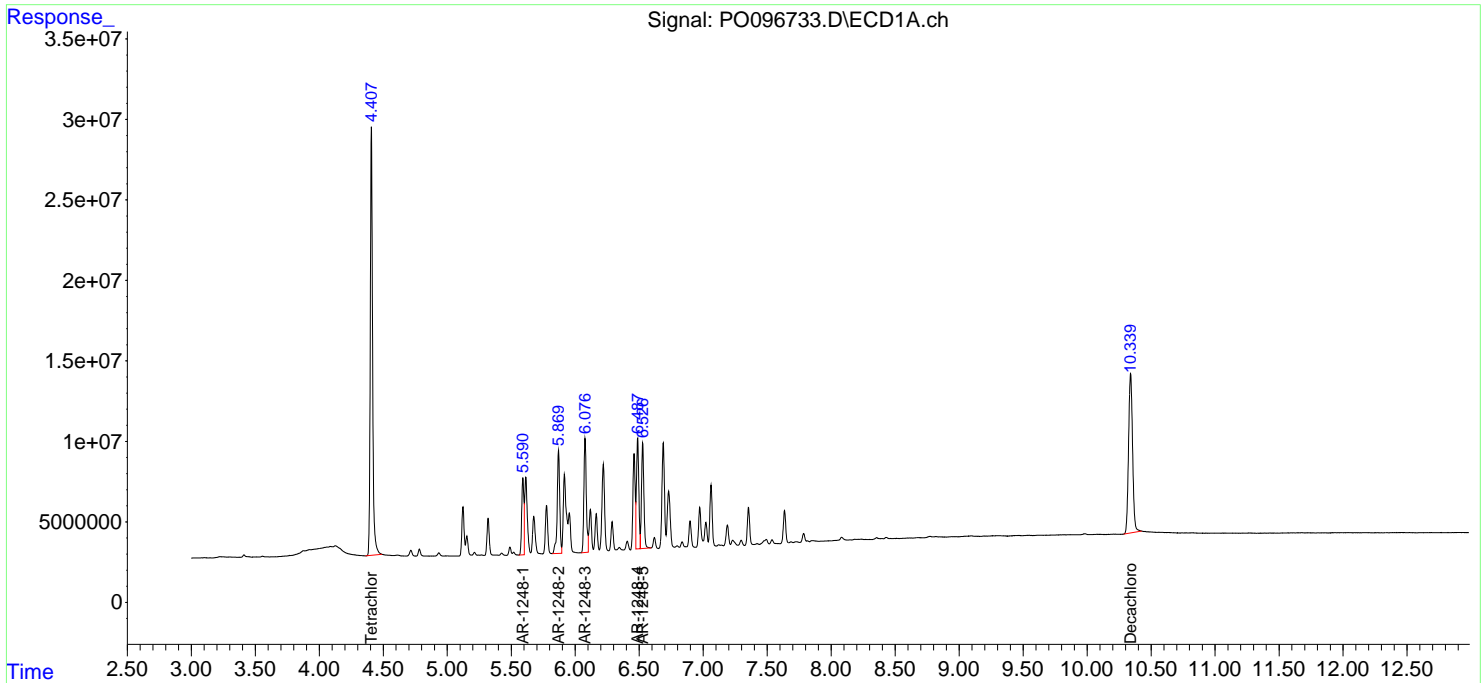
(f)=RT Delta > 1/2 Window (#)=Amounts differ by > 25% (m)=manual int.

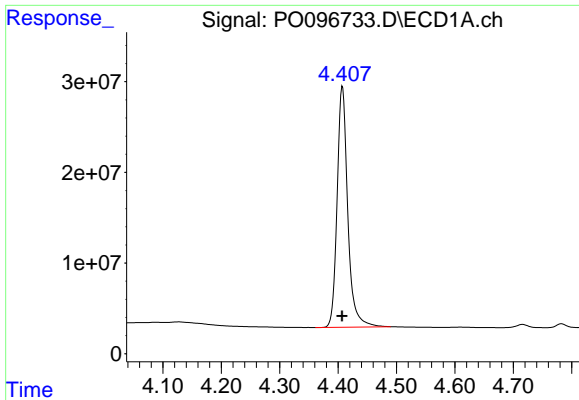
Data Path : Z:\pestpcbsrv\HPCHEM1\ECD_O\Data\PO080723\
 Data File : PO096733.D
 Signal(s) : Signal #1: ECD1A.ch Signal #2: ECD2B.ch
 Acq On : 07 Aug 2023 19:46
 Operator : YP/AJ
 Sample : AR1248ICC1000
 Misc :
 ALS Vial : 15 Sample Multiplier: 1

Instrument :
 ECD_O
 ClientSampleId :
 AR1248ICC1000

Integration File signal 1: autoint1.e
 Integration File signal 2: autoint2.e
 Quant Time: Aug 08 02:36:31 2023
 Quant Method : Z:\pestpcbsrv\HPCHEM1\ECD_O\methods\PO080723.M
 Quant Title : GC EXTRACTABLES
 QLast Update : Tue Aug 08 02:33:33 2023
 Response via : Initial Calibration
 Integrator: ChemStation

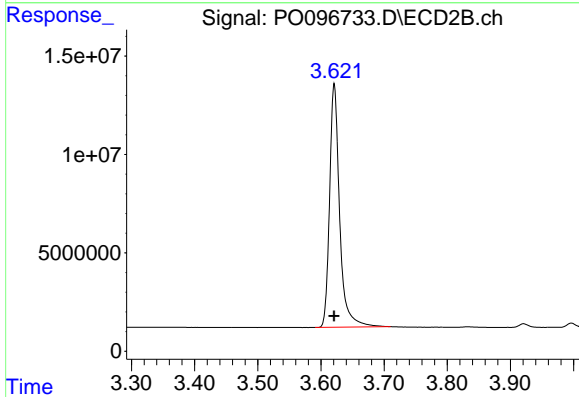
Volume Inj. : 2 µl
 Signal #1 Phase : ZB-MR1 Signal #2 Phase: ZB-MR2
 Signal #1 Info : 30Mx0.32mmx 0.50µ Signal #2 Info : 30M x 0.32mm x 0.25µm



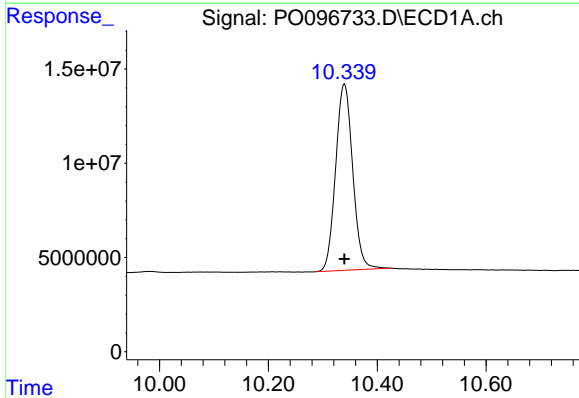


#1 Tetrachloro-m-xylene
 R.T.: 4.407 min
 Delta R.T.: 0.000 min
 Response: 336220514
 Conc: 99.07 ng/ml

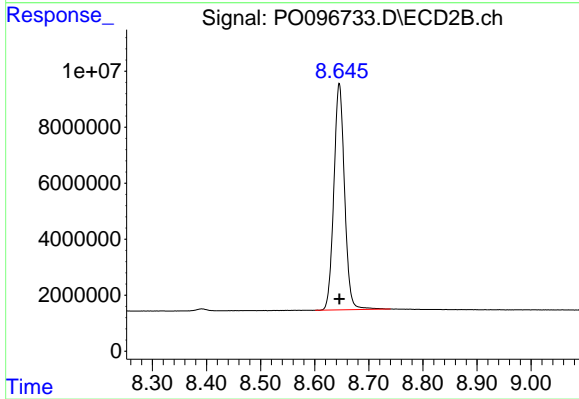
Instrument :
 ECD_O
 ClientSampleId :
 AR1248ICC1000



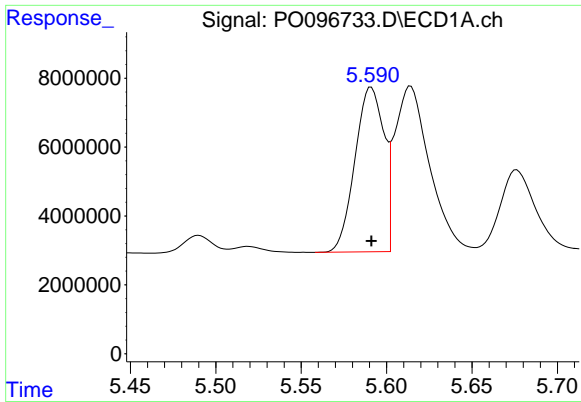
#1 Tetrachloro-m-xylene
 R.T.: 3.621 min
 Delta R.T.: 0.000 min
 Response: 137147390
 Conc: 97.77 ng/ml



#2 Decachlorobiphenyl
 R.T.: 10.340 min
 Delta R.T.: 0.000 min
 Response: 215487285
 Conc: 96.49 ng/ml



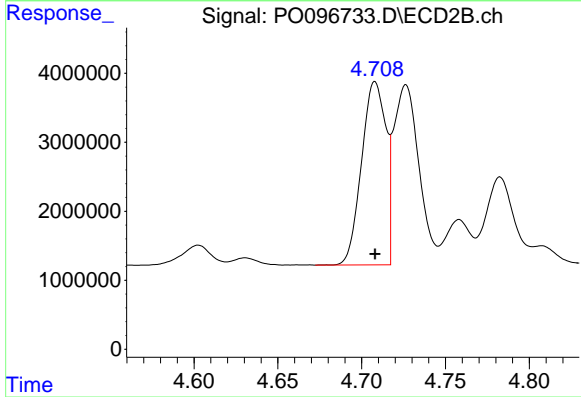
#2 Decachlorobiphenyl
 R.T.: 8.645 min
 Delta R.T.: 0.000 min
 Response: 111081499
 Conc: 95.19 ng/ml



#21 AR-1248-1

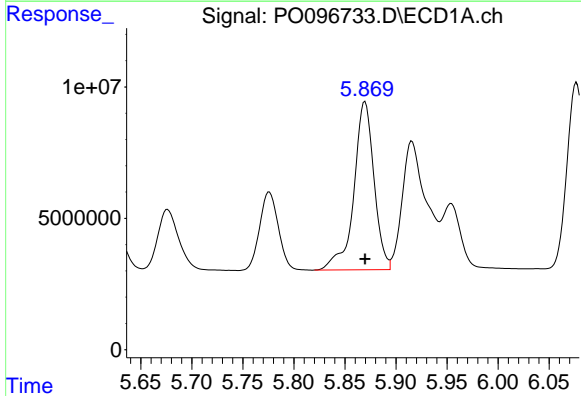
R.T.: 5.591 min
 Delta R.T.: 0.000 min
 Response: 56200684
 Conc: 962.38 ng/ml

Instrument :
 ECD_O
 ClientSampleId :
 AR1248ICC1000



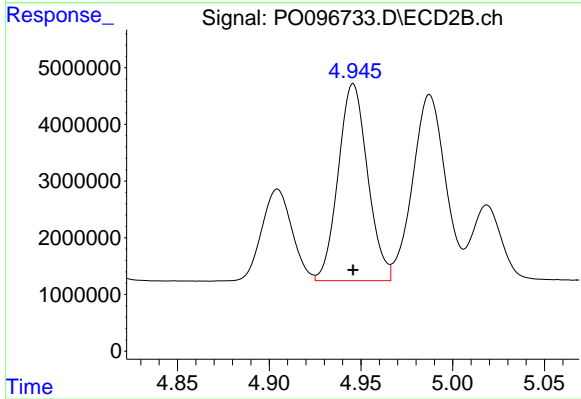
#21 AR-1248-1

R.T.: 4.708 min
 Delta R.T.: 0.000 min
 Response: 26832957
 Conc: 948.98 ng/ml



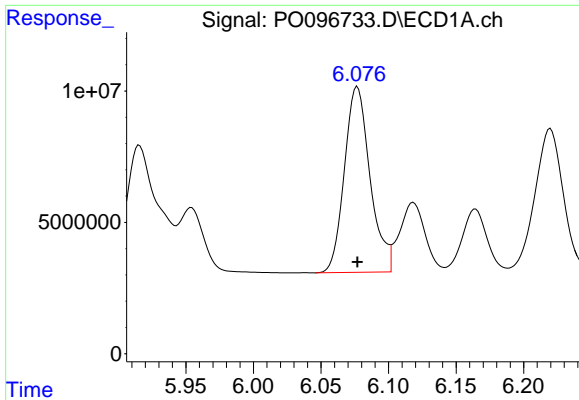
#22 AR-1248-2

R.T.: 5.870 min
 Delta R.T.: 0.000 min
 Response: 87887557
 Conc: 957.94 ng/ml



#22 AR-1248-2

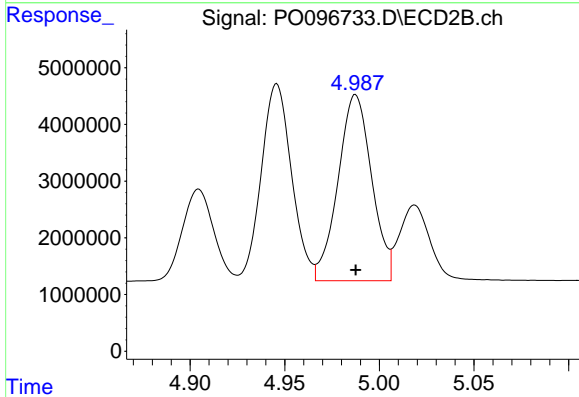
R.T.: 4.946 min
 Delta R.T.: 0.000 min
 Response: 38753275
 Conc: 945.14 ng/ml



#23 AR-1248-3

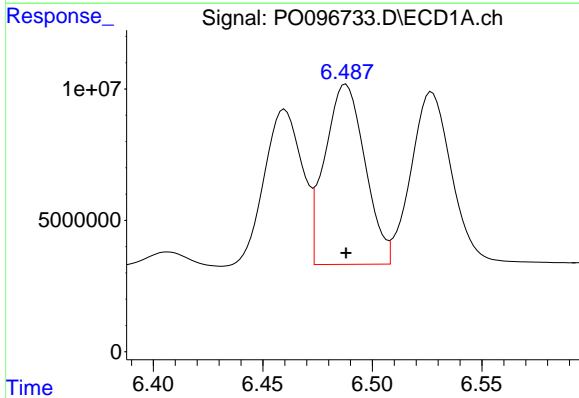
R.T.: 6.077 min
 Delta R.T.: 0.000 min
 Response: 93352695
 Conc: 965.32 ng/ml

Instrument :
 ECD_O
 ClientSampleId :
 AR1248ICC1000



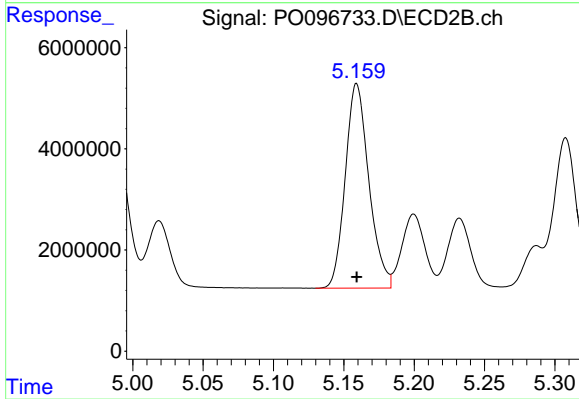
#23 AR-1248-3

R.T.: 4.987 min
 Delta R.T.: 0.000 min
 Response: 40635814
 Conc: 944.11 ng/ml



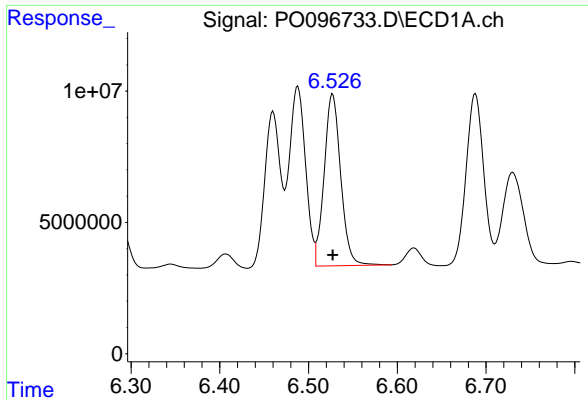
#24 AR-1248-4

R.T.: 6.488 min
 Delta R.T.: 0.000 min
 Response: 87434661
 Conc: 963.69 ng/ml



#24 AR-1248-4

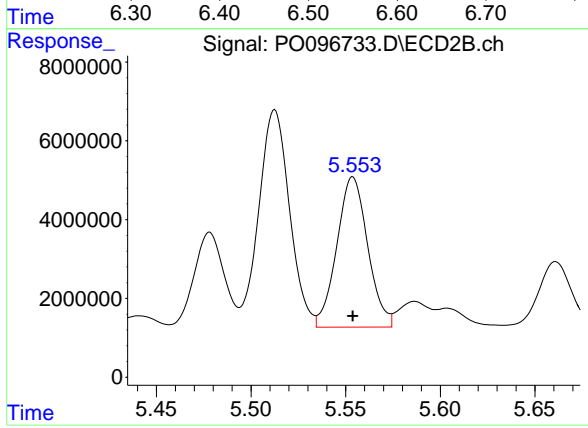
R.T.: 5.159 min
 Delta R.T.: 0.000 min
 Response: 47234173
 Conc: 949.08 ng/ml



#25 AR-1248-5

R.T.: 6.527 min
Delta R.T.: 0.000 min
Response: 84686300
Conc: 962.82 ng/ml

Instrument :
ECD_O
ClientSampleId :
AR1248ICC1000



#25 AR-1248-5

R.T.: 5.554 min
Delta R.T.: 0.000 min
Response: 43348967
Conc: 950.01 ng/ml