

Data Path : Z:\pestpcbsrv\HPCHEM1\ECD_0\Data\P0080723\
 Data File : P0096744.D
 Signal(s) : Signal #1: ECD1A.ch Signal #2: ECD2B.ch
 Acq On : 07 Aug 2023 22:52
 Operator : YP/AJ
 Sample : AR1268ICC1000
 Misc :
 ALS Vial : 26 Sample Multiplier: 1

Instrument :
 ECD_0
 ClientSampleId :

Integration File signal 1: autoint1.e
 Integration File signal 2: autoint2.e
 Quant Time: Aug 08 03:18:15 2023
 Quant Method : Z:\pestpcbsrv\HPCHEM1\ECD_0\methods\P0080723.M
 Quant Title : GC EXTRACTABLES
 QLast Update : Tue Aug 08 03:13:59 2023
 Response via : Initial Calibration
 Integrator: ChemStation

Volume Inj. : 2 µl
 Signal #1 Phase : ZB-MR1 Signal #2 Phase: ZB-MR2
 Signal #1 Info : 30Mx0.32mmx 0.50µ Signal #2 Info : 30M x 0.32mm x 0.25µm

Compound	RT#1	RT#2	Resp#1	Resp#2	ng/ml	ng/ml

System Monitoring Compounds						
1) SA Tetrachlo...	4.408	3.620	344.1E6	139.5E6	97.712	97.552
2) SA Decachlor...	10.342	8.643	384.8E6	192.6E6	96.651	95.784
Target Compounds						
41) L9 AR-1268-1	8.755	7.538	296.5E6	174.5E6	970.600	965.258
42) L9 AR-1268-2	8.855	7.604	266.7E6	158.5E6	972.777	963.206
43) L9 AR-1268-3	9.096	7.809	247.3E6	135.7E6	969.914	960.772
44) L9 AR-1268-4	9.543	8.100	90249449	56157092	969.925	965.943
45) L9 AR-1268-5	9.983	8.390	803.2E6	402.0E6	974.951	975.835

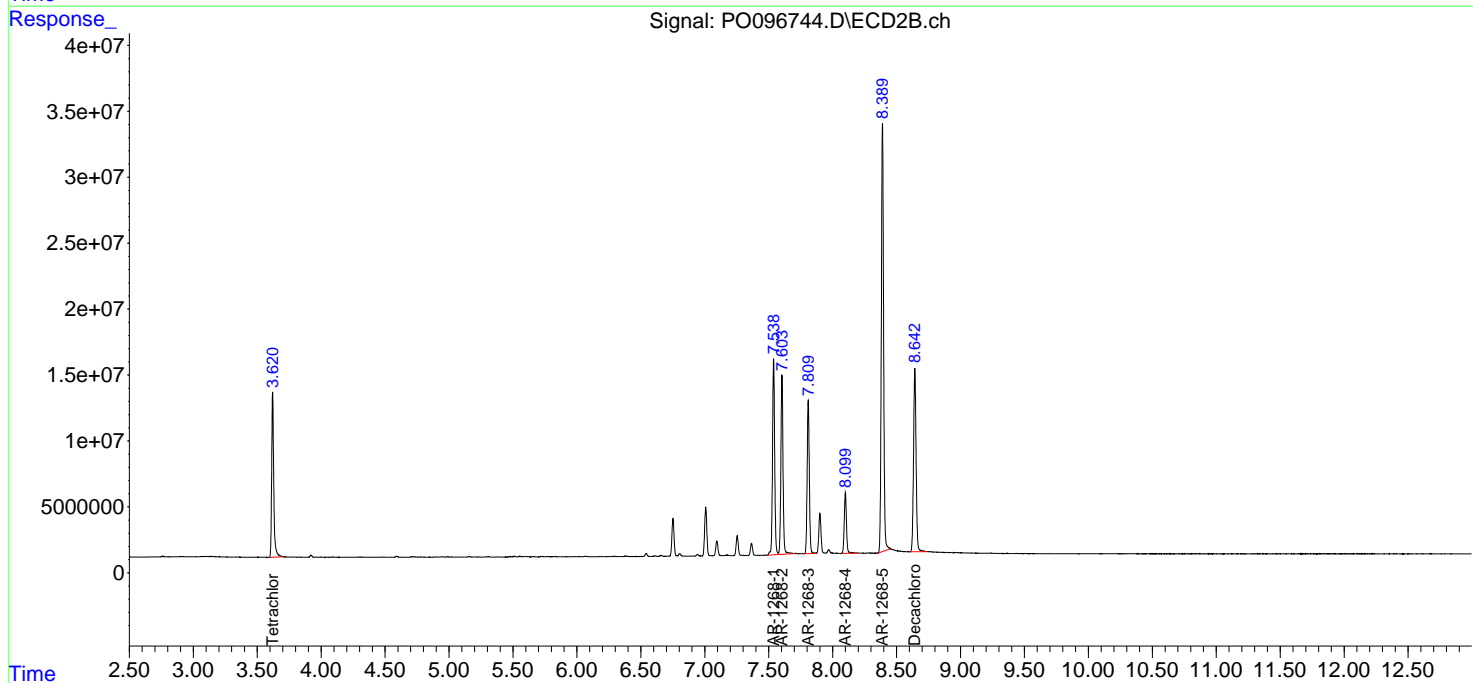
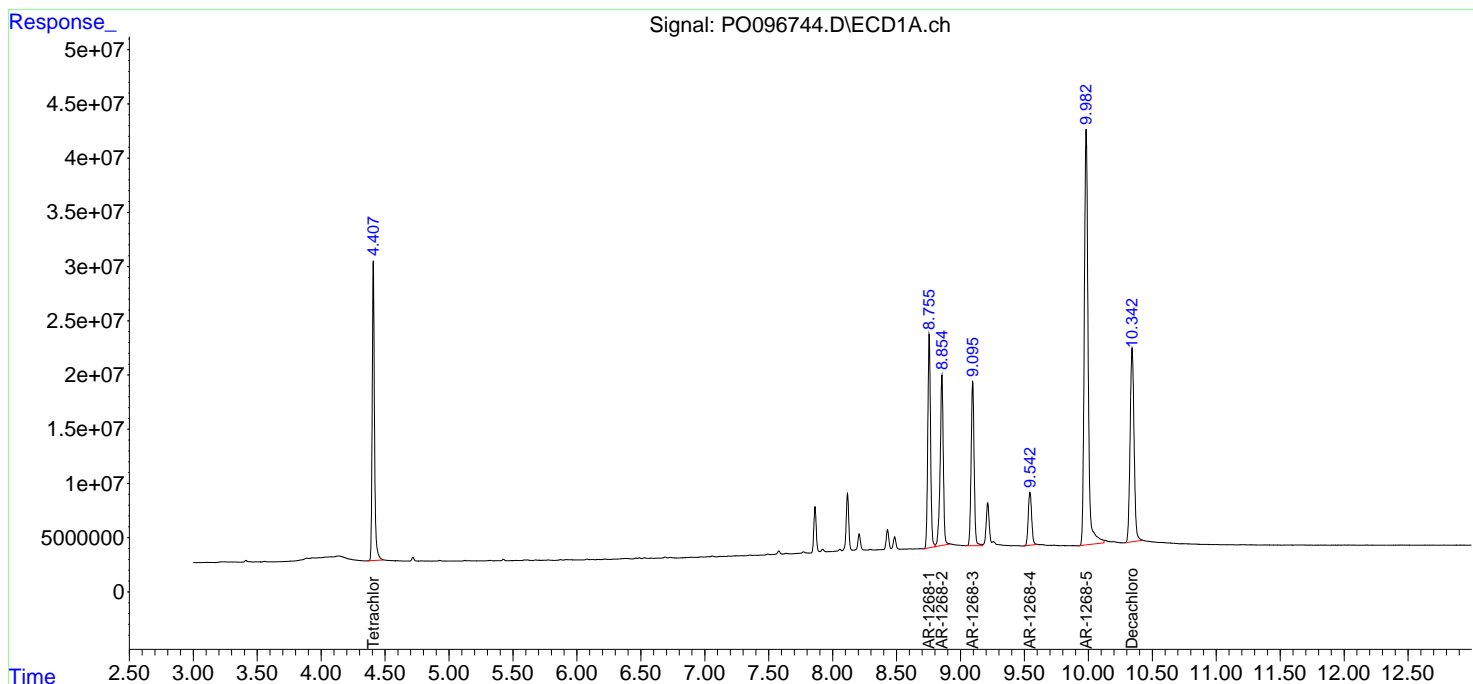
(f)=RT Delta > 1/2 Window (#)=Amounts differ by > 25% (m)=manual int.

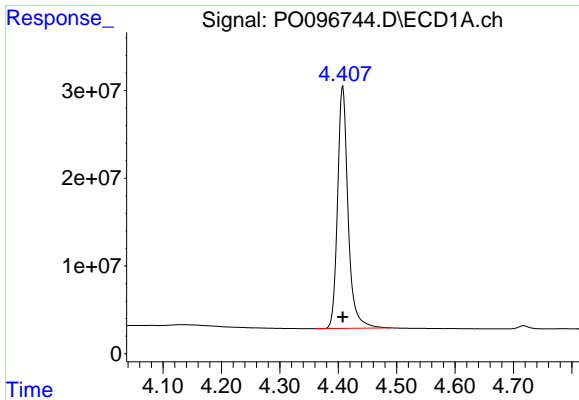
Data Path : Z:\pestpcbsrv\HPCHEM1\ECD_O\Data\PO080723\
 Data File : PO096744.D
 Signal(s) : Signal #1: ECD1A.ch Signal #2: ECD2B.ch
 Acq On : 07 Aug 2023 22:52
 Operator : YP/AJ
 Sample : AR1268ICC1000
 Misc :
 ALS Vial : 26 Sample Multiplier: 1

Instrument :
 ECD_O
 ClientSampleId :

Integration File signal 1: autoint1.e
 Integration File signal 2: autoint2.e
 Quant Time: Aug 08 03:18:15 2023
 Quant Method : Z:\pestpcbsrv\HPCHEM1\ECD_O\methods\PO080723.M
 Quant Title : GC EXTRACTABLES
 QLast Update : Tue Aug 08 03:13:59 2023
 Response via : Initial Calibration
 Integrator: ChemStation

Volume Inj. : 2 µl
 Signal #1 Phase : ZB-MR1 Signal #2 Phase: ZB-MR2
 Signal #1 Info : 30Mx0.32mmx 0.50µ Signal #2 Info : 30M x 0.32mm x 0.25µm

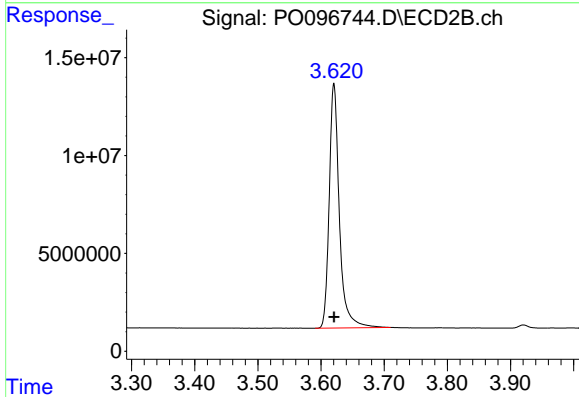




#1 Tetrachloro-m-xylene

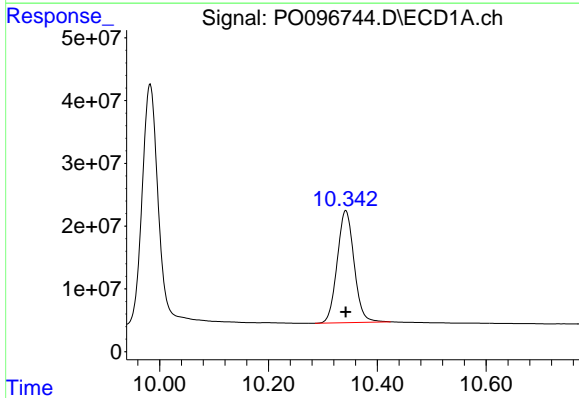
R.T.: 4.408 min
 Delta R.T.: 0.000 min
 Response: 344059973
 Conc: 97.71 ng/ml

Instrument :
 ECD_O
 ClientSampleId :



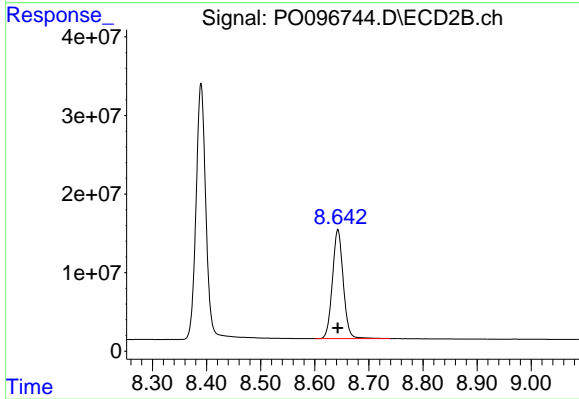
#1 Tetrachloro-m-xylene

R.T.: 3.620 min
 Delta R.T.: 0.000 min
 Response: 139541986
 Conc: 97.55 ng/ml



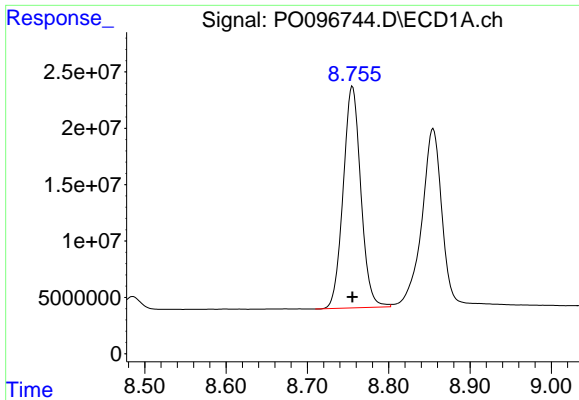
#2 Decachlorobiphenyl

R.T.: 10.342 min
 Delta R.T.: 0.000 min
 Response: 384768523
 Conc: 96.65 ng/ml



#2 Decachlorobiphenyl

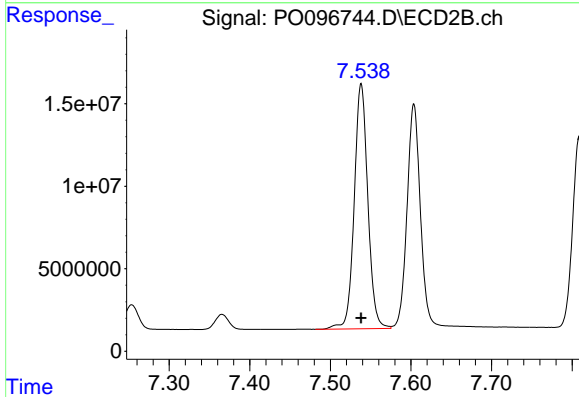
R.T.: 8.643 min
 Delta R.T.: 0.000 min
 Response: 192561247
 Conc: 95.78 ng/ml



#41 AR-1268-1

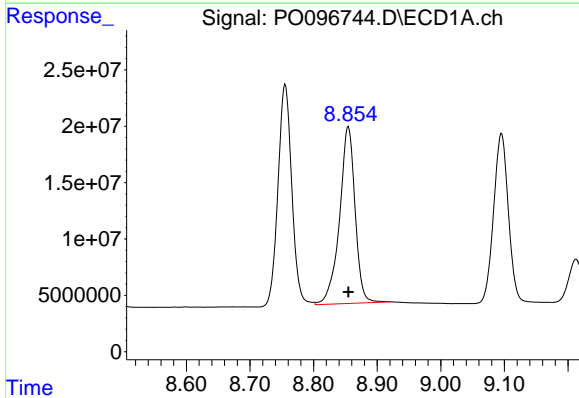
R.T.: 8.755 min
 Delta R.T.: 0.000 min
 Response: 296519771
 Conc: 970.60 ng/ml

Instrument :
 ECD_O
 ClientSampleId :



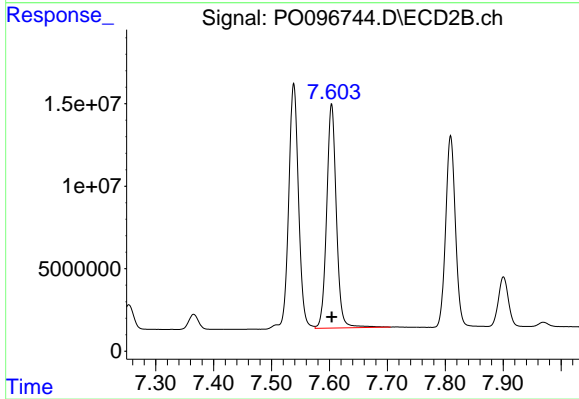
#41 AR-1268-1

R.T.: 7.538 min
 Delta R.T.: 0.000 min
 Response: 174472315
 Conc: 965.26 ng/ml



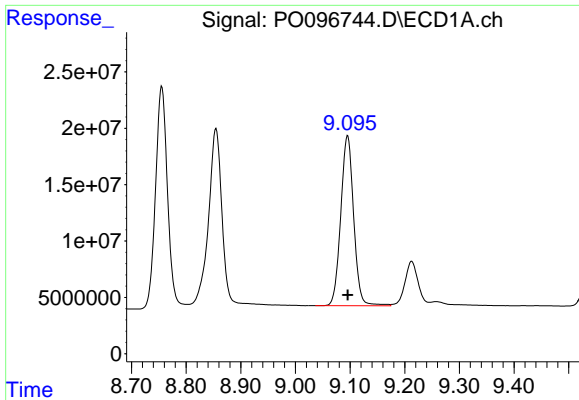
#42 AR-1268-2

R.T.: 8.855 min
 Delta R.T.: 0.000 min
 Response: 266724571
 Conc: 972.78 ng/ml



#42 AR-1268-2

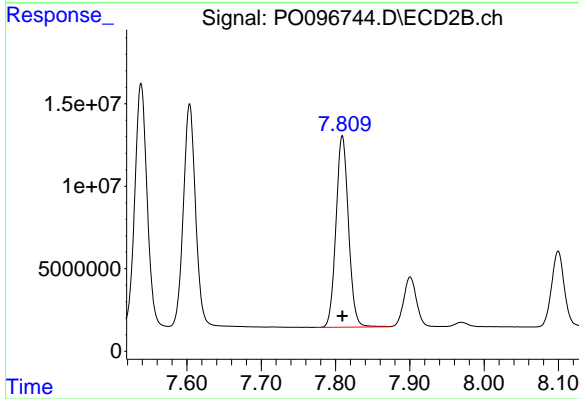
R.T.: 7.604 min
 Delta R.T.: 0.000 min
 Response: 158469397
 Conc: 963.21 ng/ml



#43 AR-1268-3

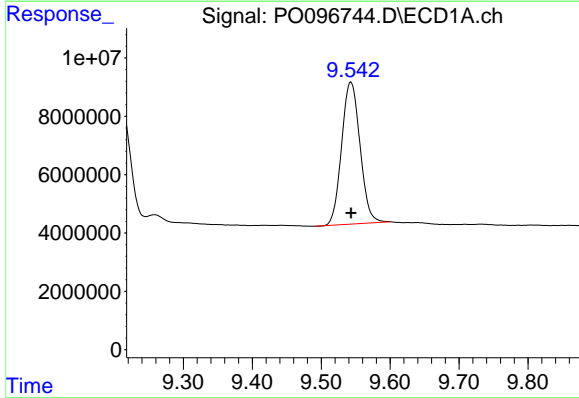
R.T.: 9.096 min
 Delta R.T.: 0.000 min
 Response: 247306687
 Conc: 969.91 ng/ml

Instrument :
 ECD_O
 ClientSampleId :



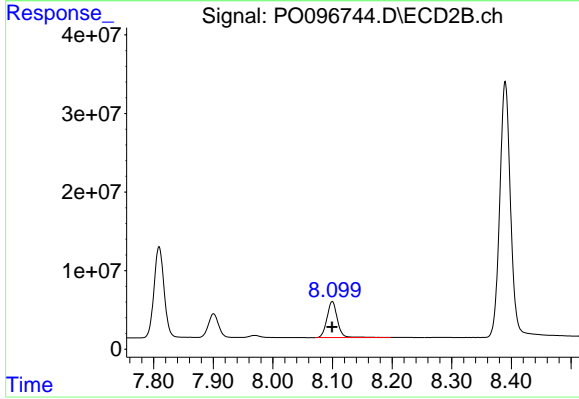
#43 AR-1268-3

R.T.: 7.809 min
 Delta R.T.: 0.000 min
 Response: 135715696
 Conc: 960.77 ng/ml



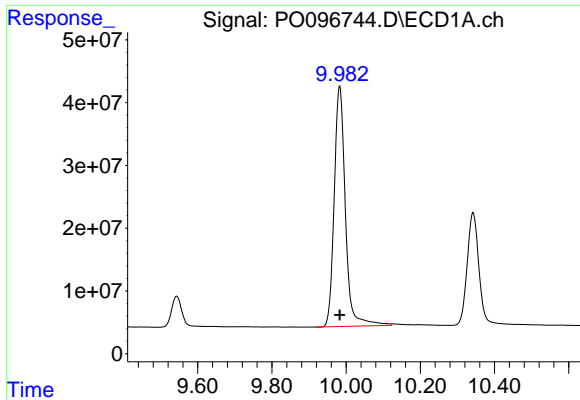
#44 AR-1268-4

R.T.: 9.543 min
 Delta R.T.: 0.000 min
 Response: 90249449
 Conc: 969.92 ng/ml



#44 AR-1268-4

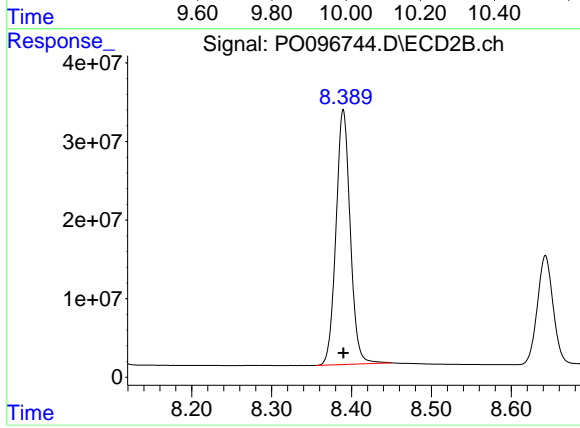
R.T.: 8.100 min
 Delta R.T.: 0.000 min
 Response: 56157092
 Conc: 965.94 ng/ml



#45 AR-1268-5

R.T.: 9.983 min
Delta R.T.: 0.000 min
Response: 803174263
Conc: 974.95 ng/ml

Instrument :
ECD_O
ClientSampleId :



#45 AR-1268-5

R.T.: 8.390 min
Delta R.T.: 0.000 min
Response: 402043849
Conc: 975.83 ng/ml