

Data Path : Z:\pestpcbsrv\HPCHEM1\ECD_0\Data\P0080724\
 Data File : PO105262.D
 Signal(s) : Signal #1: ECD1A.ch Signal #2: ECD2B.ch
 Acq On : 07 Aug 2024 17:13
 Operator : YP/AJ
 Sample : AR1254CCC500
 Misc :
 ALS Vial : 6 Sample Multiplier: 1

Instrument :
 ECD_0
 ClientSampleId :
 AR1254CCC500

Integration File signal 1: autoint1.e
 Integration File signal 2: autoint2.e
 Quant Time: Aug 07 18:26:47 2024
 Quant Method : Z:\pestpcbsrv\HPCHEM1\ECD_0\methods\P0072924.M
 Quant Title : GC EXTRACTABLES
 QLast Update : Tue Jul 30 07:11:20 2024
 Response via : Initial Calibration
 Integrator: ChemStation

Volume Inj. : 2 µl
 Signal #1 Phase : ZB-MR1 Signal #2 Phase: ZB-MR2
 Signal #1 Info : 30Mx0.32mmx 0.50µ Signal #2 Info : 30M x 0.32mm x 0.25µm

Compound	RT#1	RT#2	Resp#1	Resp#2	ng/ml	ng/ml
System Monitoring Compounds						
1) SA Tetrachlo...	4.429	3.537	393.0E6	141.9E6	57.083	55.685
2) SA Decachlor...	10.219	8.428	273.5E6	78717225	53.273	49.554
Target Compounds						
3) L1 AR-1016-1	5.599	4.592	3173640	1578074	13.337	16.973 #
4) L1 AR-1016-2	5.625	4.608	4230892	1154841	12.585	8.973 #
5) L1 AR-1016-3	5.683	4.782	1822311	499815	8.809	7.381
6) L1 AR-1016-4	5.784	4.823	3539346	30171888	19.495	561.031 #
7) L1 AR-1016-5	6.081	5.031	46858623	17928110	287.913	252.632
8) L2 AR-1221-1	4.638	3.762	1740689	87694	18.969	2.686 #
9) L2 AR-1221-2	4.735	3.828	7872349	2398736	109.833	95.225
10) L2 AR-1221-3	4.797	3.900	1912156	415469	9.498	5.520 #
11) L3 AR-1232-1	4.797	3.900	1912156	415469	11.645	6.733 #
12) L3 AR-1232-2	5.331	4.608	1980659	1154841	23.949	18.972
13) L3 AR-1232-3	5.625	4.782	4230892	499815	26.925	15.704 #
14) L3 AR-1232-4	5.784	4.863	3539346	10132516	41.055	352.823 #
15) L3 AR-1232-5	5.875	5.031	76536473	17928110	1336.403	575.828 #
16) L4 AR-1242-1	5.599	4.592	3173640	1578074	16.257	20.613 #
17) L4 AR-1242-2	5.625	4.608	4230892	1154841	15.457	11.007 #
18) L4 AR-1242-3	5.683	4.782	1822311	499815	10.798	9.005
19) L4 AR-1242-4	5.784	4.863	3539346	10132516	23.498	181.064 #
20) L4 AR-1242-5	6.530	5.376	46628876	72853882	279.456	1027.304 #
21) L5 AR-1248-1	5.599	4.592	3173640	1578074	20.471	25.751 #
22) L5 AR-1248-2	5.875	4.823	76536473	30171888	346.961	362.985
23) L5 AR-1248-3	6.081	4.863	46858623	10132516	190.853	116.269 #
24) L5 AR-1248-4	6.487	5.031	67696894	17928110	223.788	173.722
25) L5 AR-1248-5	6.530	5.416	46628876	8530677	164.061	82.971 #
26) L6 AR-1254-1	6.461	5.376	137.9E6	72853882	476.609	485.532
27) L6 AR-1254-2	6.681	5.522	201.6E6	64552190	485.409	482.250
28) L6 AR-1254-3	7.051	5.918	207.4E6	99137185	496.821	466.592
29) L6 AR-1254-4	7.338	6.143	152.0E6	61867100	486.297	465.822
30) L6 AR-1254-5	7.760	6.555	166.6E6	86295100	455.318	464.895
31) L7 AR-1260-1	7.217	6.047	85325350	49427431	268.725	362.911 #
32) L7 AR-1260-2	7.474	6.232	92281680	39199688	253.753	232.969
33) L7 AR-1260-3	7.822	6.382	20716162	41609567	80.794	246.712 #
34) L7 AR-1260-4	8.052	6.848	64714038	4477572	227.004	40.887 #
35) L7 AR-1260-5	8.387	7.087	32789721	9724233	58.663	38.042 #
36) L8 AR-1262-1	7.760	6.555	166.6E6	86295100	572.305	853.524 #
37) L8 AR-1262-2	8.387	6.848	32789721	4477572	44.642	27.091 #
38) L8 AR-1262-3	8.718	7.368	19619691	2578337	41.256	20.512 #
39) L8 AR-1262-4	8.801	7.428	383763	11189066	1.109	48.759 #
40) L8 AR-1262-5	9.462	7.919	644265	487344	2.605	4.959 #
41) L9 AR-1268-1	8.718	7.368	19619691	2578337	24.883	7.329 #

Data Path : Z:\pestpcbsrv\HPCHEM1\ECD_0\Data\P0080724\
 Data File : P0105262.D
 Signal(s) : Signal #1: ECD1A.ch Signal #2: ECD2B.ch
 Acq On : 07 Aug 2024 17:13
 Operator : YP/AJ
 Sample : AR1254CCC500
 Misc :
 ALS Vial : 6 Sample Multiplier: 1

Instrument :
 ECD_0
 ClientSampleId :
 AR1254CCC500

Integration File signal 1: autoint1.e
 Integration File signal 2: autoint2.e
 Quant Time: Aug 07 18:26:47 2024
 Quant Method : Z:\pestpcbsrv\HPCHEM1\ECD_0\methods\P0072924.M
 Quant Title : GC EXTRACTABLES
 QLast Update : Tue Jul 30 07:11:20 2024
 Response via : Initial Calibration
 Integrator: ChemStation

Volume Inj. : 2 µl
 Signal #1 Phase : ZB-MR1 Signal #2 Phase: ZB-MR2
 Signal #1 Info : 30Mx0.32mmx 0.50µ Signal #2 Info : 30M x 0.32mm x 0.25µm

	Compound	RT#1	RT#2	Resp#1	Resp#2	ng/ml	ng/ml
42)	L9 AR-1268-2	8.801	7.428	383763	11189066	0.554	36.079 #
43)	L9 AR-1268-3	9.018	7.636	838723	379182	1.405	1.510
44)	L9 AR-1268-4	9.462	7.919	644265	487344	2.554	4.681 #
45)	L9 AR-1268-5	9.880	8.195	3361841	804833	1.715	1.201 #

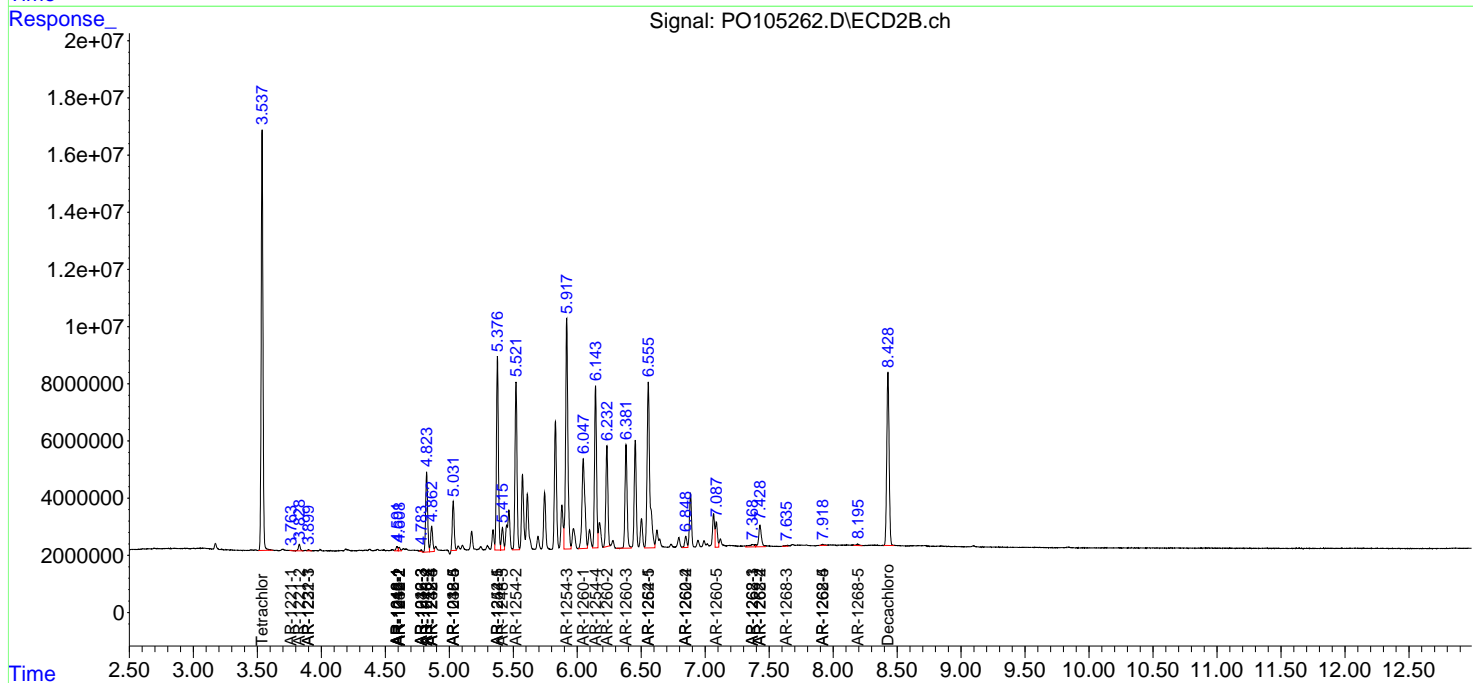
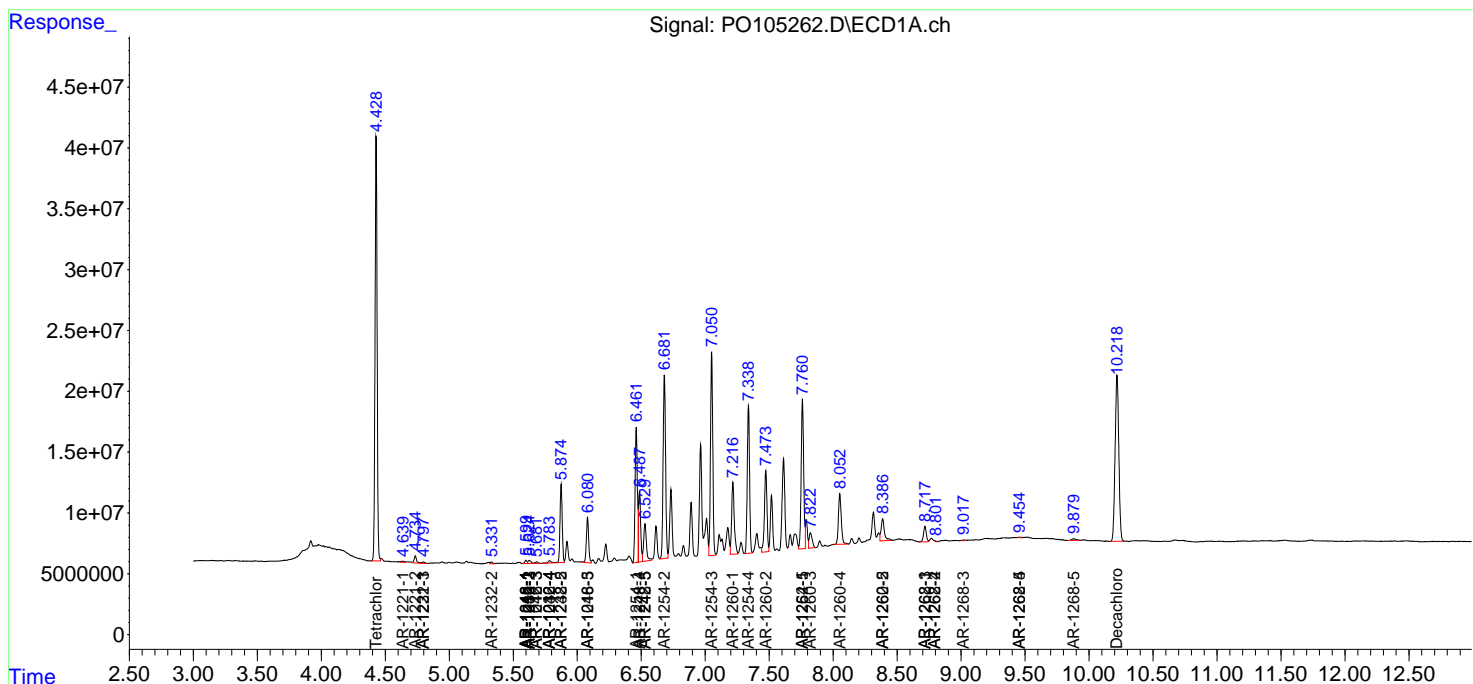
(f)=RT Delta > 1/2 Window (#)=Amounts differ by > 25% (m)=manual int.

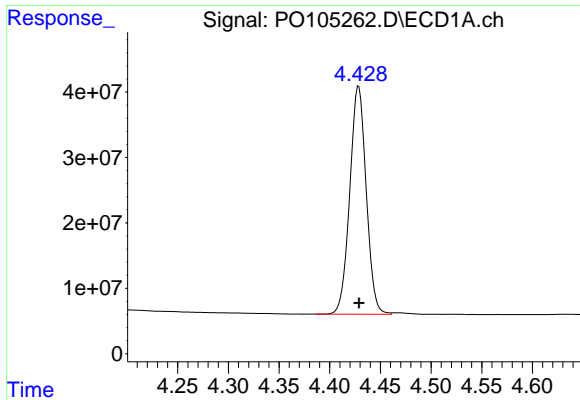
Data Path : Z:\pestpcbsrv\HPCHEM1\ECD_O\Data\PO080724\
 Data File : PO105262.D
 Signal(s) : Signal #1: ECD1A.ch Signal #2: ECD2B.ch
 Acq On : 07 Aug 2024 17:13
 Operator : YP/AJ
 Sample : AR1254CCC500
 Misc :
 ALS Vial : 6 Sample Multiplier: 1

Instrument :
 ECD_O
 ClientSampleId :
 AR1254CCC500

Integration File signal 1: autoint1.e
 Integration File signal 2: autoint2.e
 Quant Time: Aug 07 18:26:47 2024
 Quant Method : Z:\pestpcbsrv\HPCHEM1\ECD_O\methods\PO072924.M
 Quant Title : GC EXTRACTABLES
 QLast Update : Tue Jul 30 07:11:20 2024
 Response via : Initial Calibration
 Integrator: ChemStation

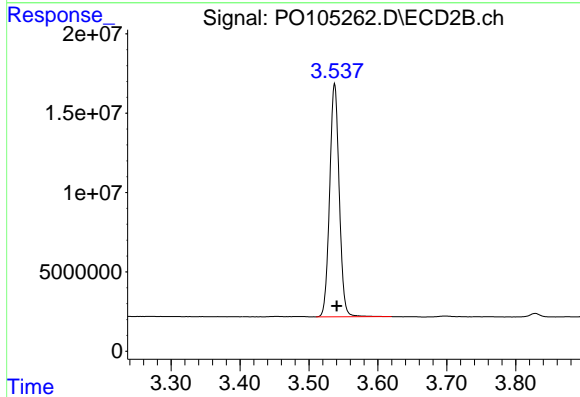
Volume Inj. : 2 µl
 Signal #1 Phase : ZB-MR1 Signal #2 Phase: ZB-MR2
 Signal #1 Info : 30Mx0.32mmx 0.50µ Signal #2 Info : 30M x 0.32mm x 0.25µm



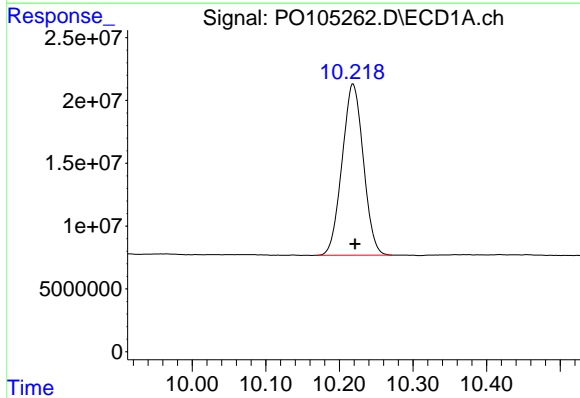


#1 Tetrachloro-m-xylene
 R.T.: 4.429 min
 Delta R.T.: 0.000 min
 Response: 392976256
 Conc: 57.08 ng/ml

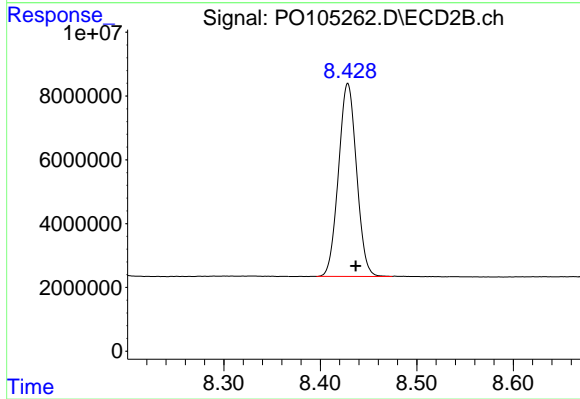
Instrument :
 ECD_O
 ClientSampleId :
 AR1254CCC500



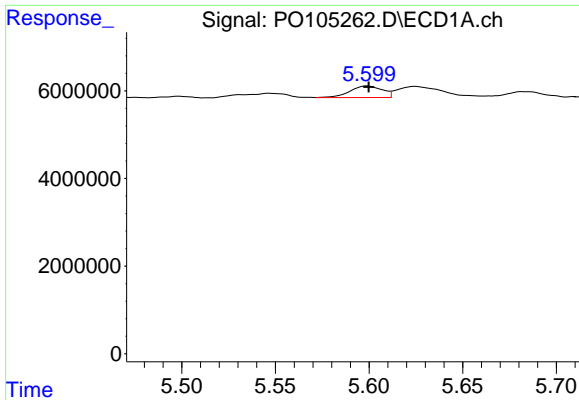
#1 Tetrachloro-m-xylene
 R.T.: 3.537 min
 Delta R.T.: -0.003 min
 Response: 141891406
 Conc: 55.69 ng/ml



#2 Decachlorobiphenyl
 R.T.: 10.219 min
 Delta R.T.: -0.003 min
 Response: 273500771
 Conc: 53.27 ng/ml



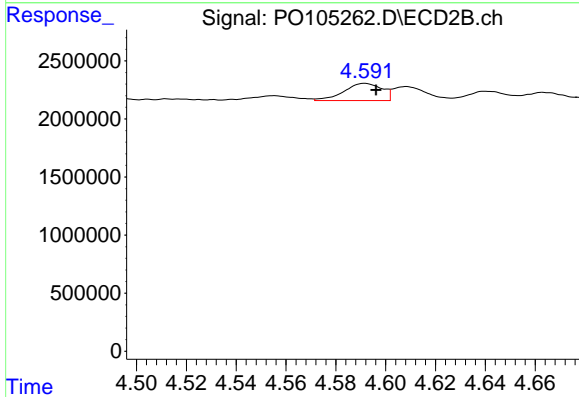
#2 Decachlorobiphenyl
 R.T.: 8.428 min
 Delta R.T.: -0.008 min
 Response: 78717225
 Conc: 49.55 ng/ml



#3 AR-1016-1

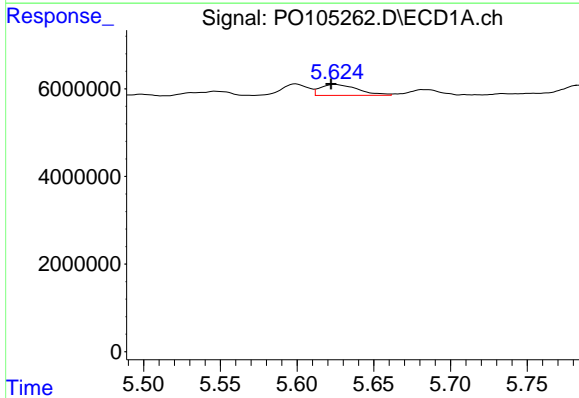
R.T.: 5.599 min
 Delta R.T.: 0.000 min
 Response: 3173640
 Conc: 13.34 ng/ml

Instrument :
 ECD_O
 ClientSampleId :
 AR1254CCC500



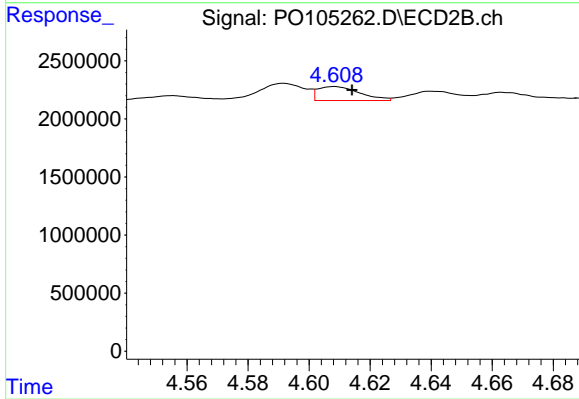
#3 AR-1016-1

R.T.: 4.592 min
 Delta R.T.: -0.004 min
 Response: 1578074
 Conc: 16.97 ng/ml



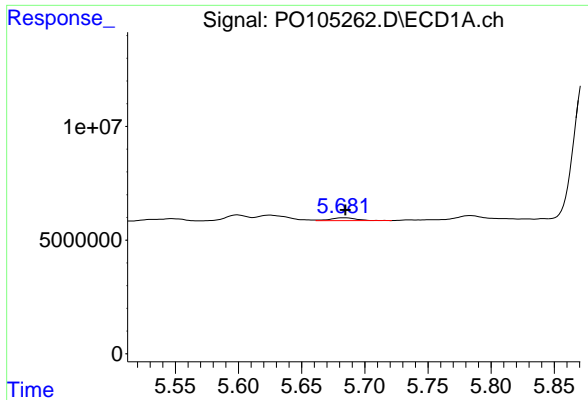
#4 AR-1016-2

R.T.: 5.625 min
 Delta R.T.: 0.003 min
 Response: 4230892
 Conc: 12.58 ng/ml



#4 AR-1016-2

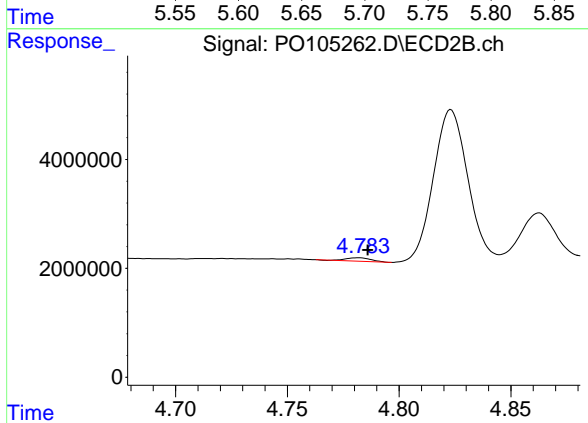
R.T.: 4.608 min
 Delta R.T.: -0.006 min
 Response: 1154841
 Conc: 8.97 ng/ml



#5 AR-1016-3

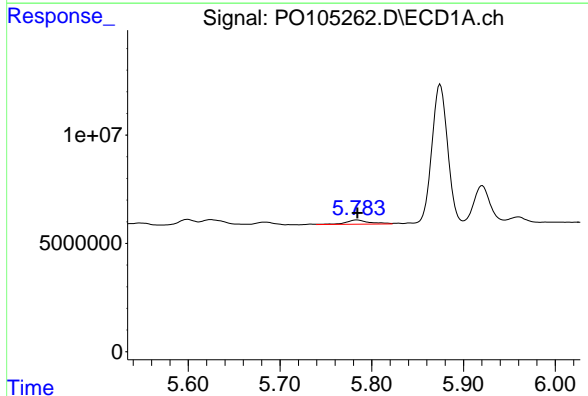
R.T.: 5.683 min
 Delta R.T.: -0.002 min
 Response: 1822311
 Conc: 8.81 ng/ml

Instrument :
 ECD_O
 ClientSampleId :
 AR1254CCC500



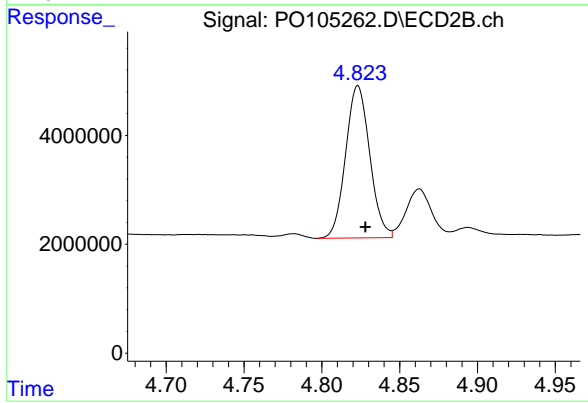
#5 AR-1016-3

R.T.: 4.782 min
 Delta R.T.: -0.004 min
 Response: 499815
 Conc: 7.38 ng/ml



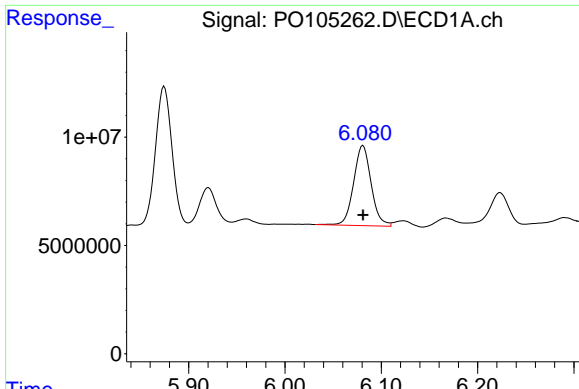
#6 AR-1016-4

R.T.: 5.784 min
 Delta R.T.: 0.000 min
 Response: 3539346
 Conc: 19.49 ng/ml



#6 AR-1016-4

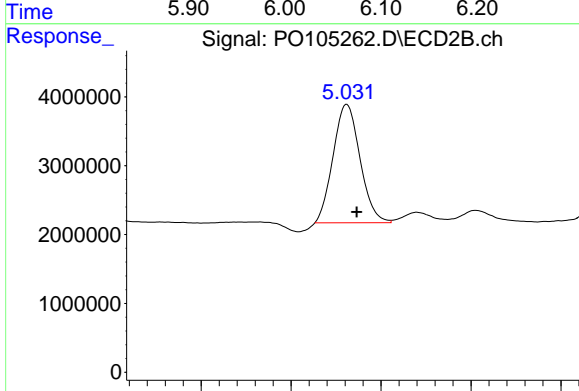
R.T.: 4.823 min
 Delta R.T.: -0.005 min
 Response: 30171888
 Conc: 561.03 ng/ml



#7 AR-1016-5

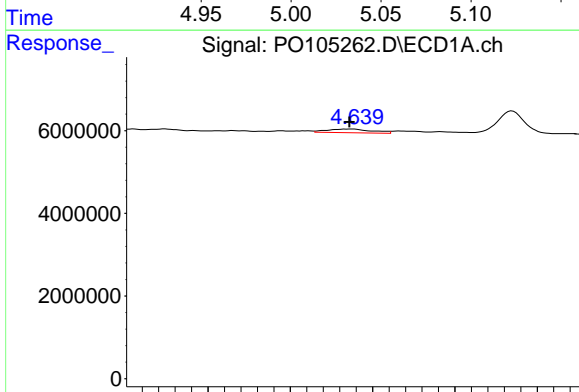
R.T.: 6.081 min
 Delta R.T.: 0.000 min
 Response: 46858623
 Conc: 287.91 ng/ml

Instrument :
 ECD_O
 ClientSampleId :
 AR1254CCC500



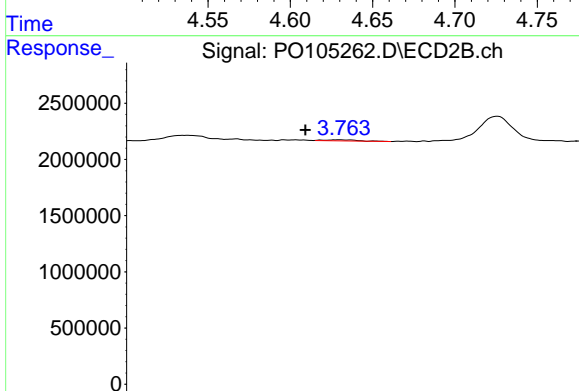
#7 AR-1016-5

R.T.: 5.031 min
 Delta R.T.: -0.005 min
 Response: 17928110
 Conc: 252.63 ng/ml



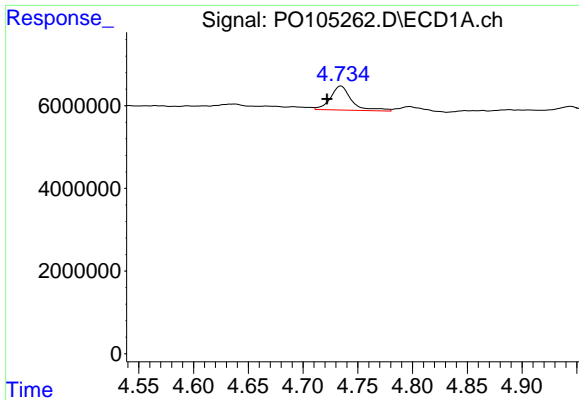
#8 AR-1221-1

R.T.: 4.638 min
 Delta R.T.: 0.002 min
 Response: 1740689
 Conc: 18.97 ng/ml



#8 AR-1221-1

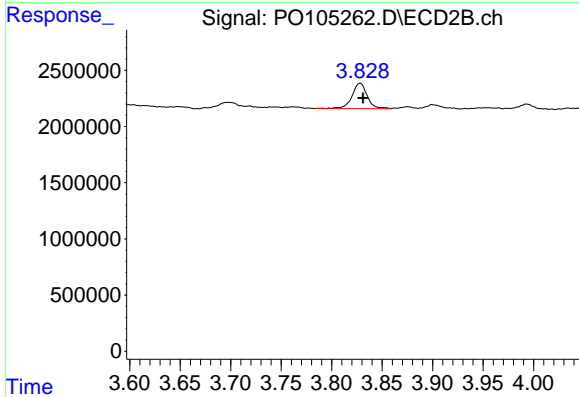
R.T.: 3.762 min
 Delta R.T.: 0.014 min
 Response: 87694
 Conc: 2.69 ng/ml



#9 AR-1221-2

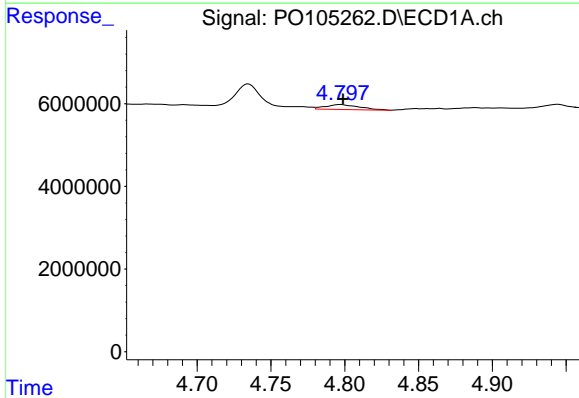
R.T.: 4.735 min
 Delta R.T.: 0.013 min
 Response: 7872349
 Conc: 109.83 ng/ml

Instrument :
 ECD_O
 ClientSampleId :
 AR1254CCC500



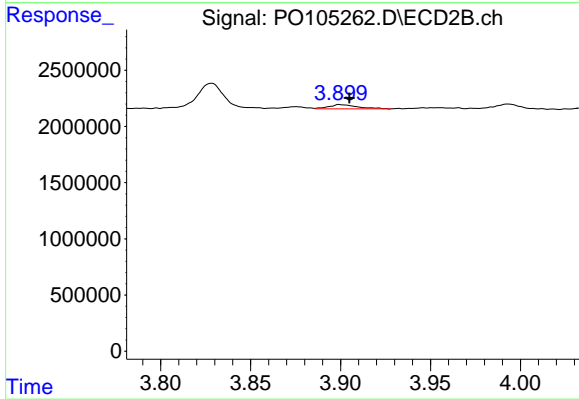
#9 AR-1221-2

R.T.: 3.828 min
 Delta R.T.: -0.003 min
 Response: 2398736
 Conc: 95.22 ng/ml



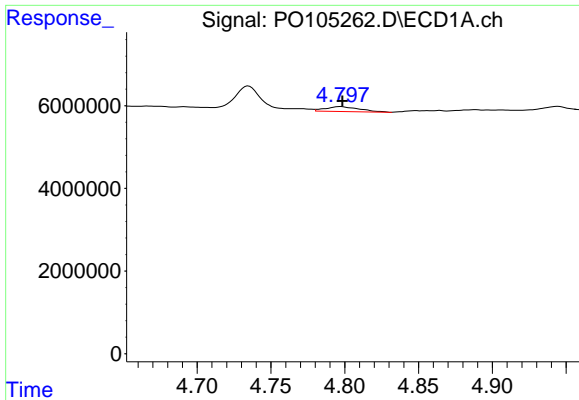
#10 AR-1221-3

R.T.: 4.797 min
 Delta R.T.: -0.002 min
 Response: 1912156
 Conc: 9.50 ng/ml



#10 AR-1221-3

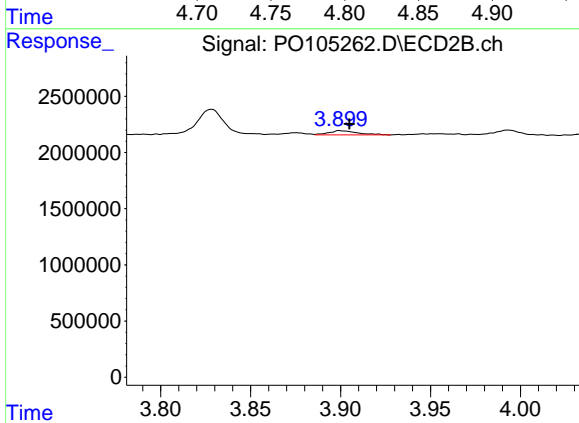
R.T.: 3.900 min
 Delta R.T.: -0.005 min
 Response: 415469
 Conc: 5.52 ng/ml



#11 AR-1232-1

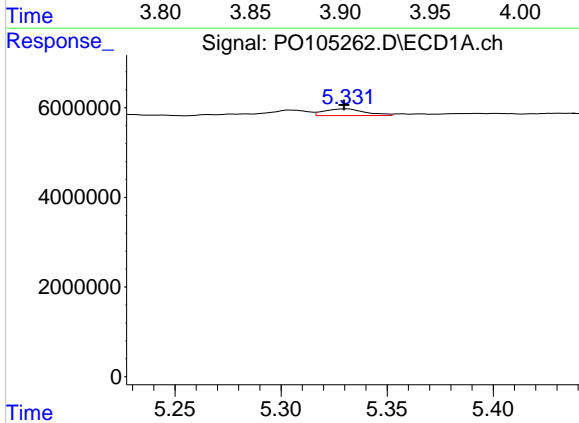
R.T.: 4.797 min
 Delta R.T.: -0.001 min
 Response: 1912156
 Conc: 11.65 ng/ml

Instrument :
 ECD_O
 ClientSampleId :
 AR1254CCC500



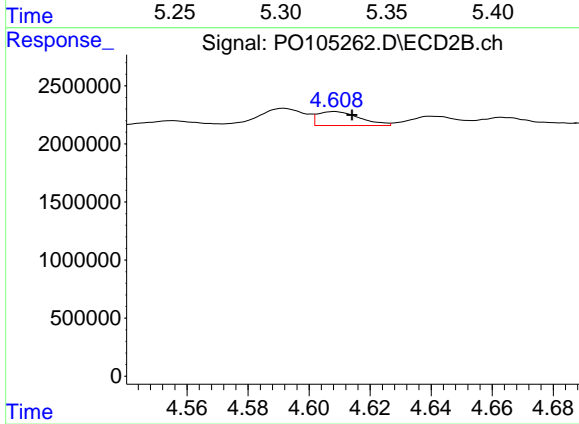
#11 AR-1232-1

R.T.: 3.900 min
 Delta R.T.: -0.005 min
 Response: 415469
 Conc: 6.73 ng/ml



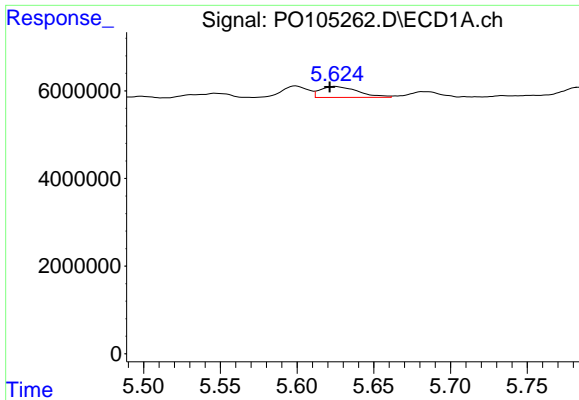
#12 AR-1232-2

R.T.: 5.331 min
 Delta R.T.: 0.001 min
 Response: 1980659
 Conc: 23.95 ng/ml



#12 AR-1232-2

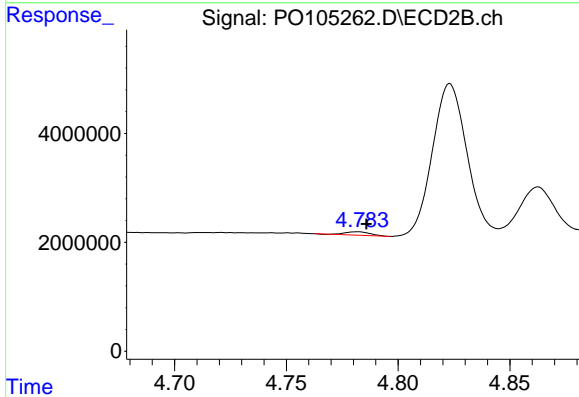
R.T.: 4.608 min
 Delta R.T.: -0.006 min
 Response: 1154841
 Conc: 18.97 ng/ml



#13 AR-1232-3

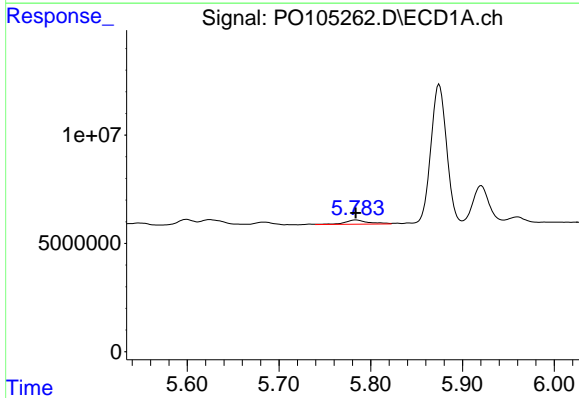
R.T.: 5.625 min
 Delta R.T.: 0.004 min
 Response: 4230892
 Conc: 26.93 ng/ml

Instrument :
 ECD_O
 ClientSampleId :
 AR1254CCC500



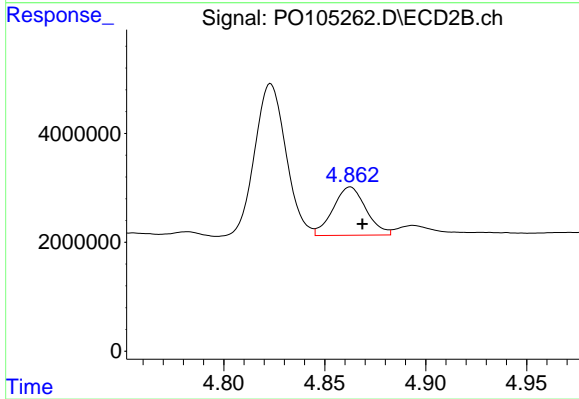
#13 AR-1232-3

R.T.: 4.782 min
 Delta R.T.: -0.004 min
 Response: 499815
 Conc: 15.70 ng/ml



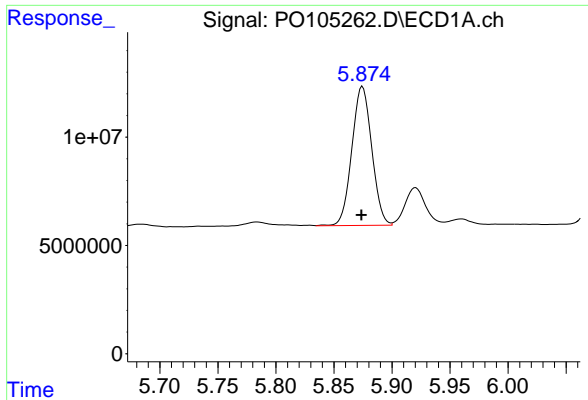
#14 AR-1232-4

R.T.: 5.784 min
 Delta R.T.: 0.000 min
 Response: 3539346
 Conc: 41.05 ng/ml



#14 AR-1232-4

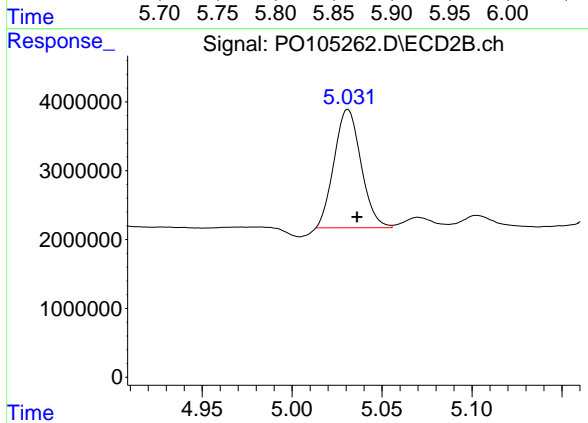
R.T.: 4.863 min
 Delta R.T.: -0.006 min
 Response: 10132516
 Conc: 352.82 ng/ml



#15 AR-1232-5

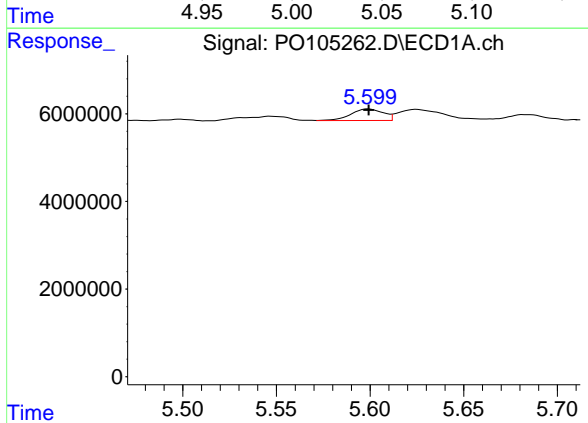
R.T.: 5.875 min
 Delta R.T.: 0.000 min
 Response: 76536473
 Conc: 1336.40 ng/ml

Instrument :
 ECD_O
 ClientSampleId :
 AR1254CCC500



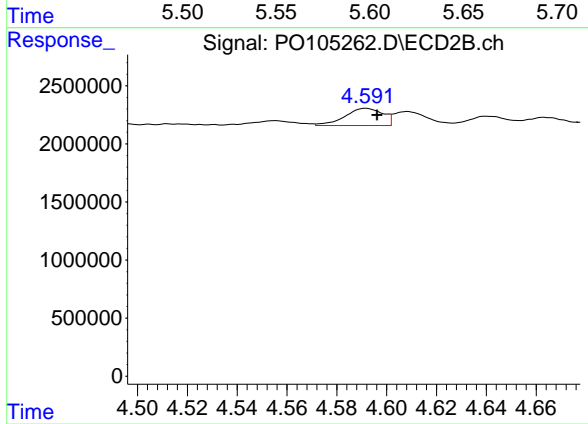
#15 AR-1232-5

R.T.: 5.031 min
 Delta R.T.: -0.005 min
 Response: 17928110
 Conc: 575.83 ng/ml



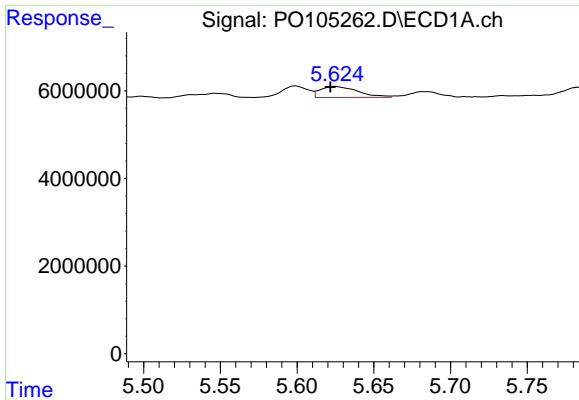
#16 AR-1242-1

R.T.: 5.599 min
 Delta R.T.: 0.000 min
 Response: 3173640
 Conc: 16.26 ng/ml



#16 AR-1242-1

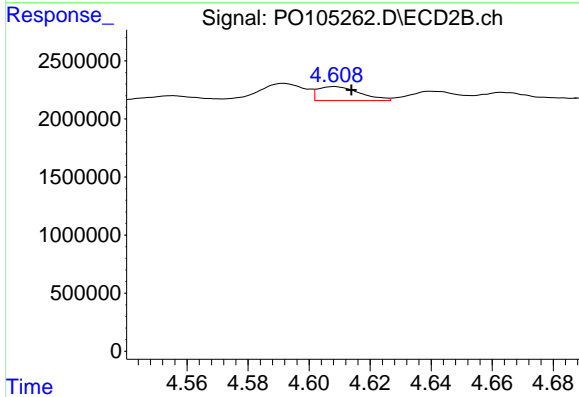
R.T.: 4.592 min
 Delta R.T.: -0.004 min
 Response: 1578074
 Conc: 20.61 ng/ml



#17 AR-1242-2

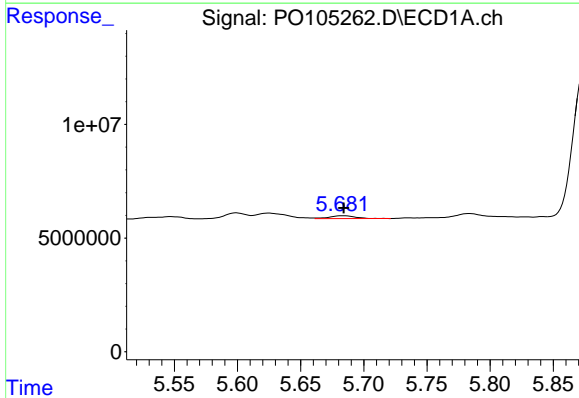
R.T.: 5.625 min
 Delta R.T.: 0.003 min
 Response: 4230892
 Conc: 15.46 ng/ml

Instrument :
 ECD_O
 ClientSampleId :
 AR1254CCC500



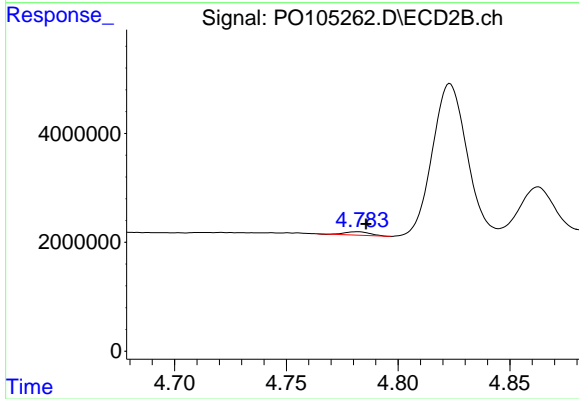
#17 AR-1242-2

R.T.: 4.608 min
 Delta R.T.: -0.006 min
 Response: 1154841
 Conc: 11.01 ng/ml



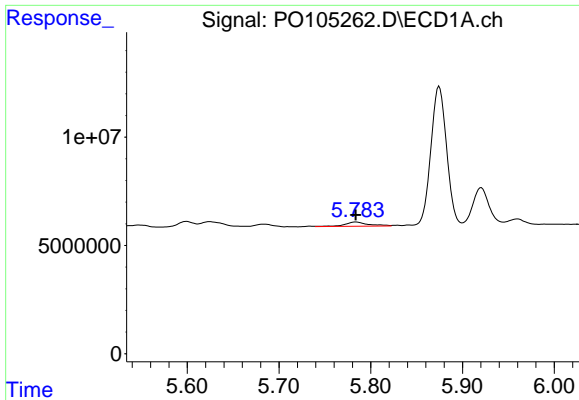
#18 AR-1242-3

R.T.: 5.683 min
 Delta R.T.: -0.001 min
 Response: 1822311
 Conc: 10.80 ng/ml



#18 AR-1242-3

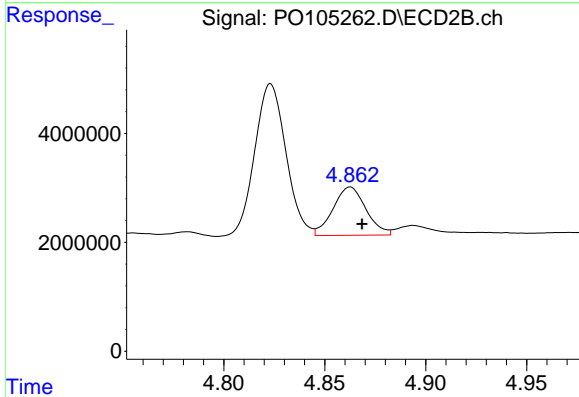
R.T.: 4.782 min
 Delta R.T.: -0.004 min
 Response: 499815
 Conc: 9.01 ng/ml



#19 AR-1242-4

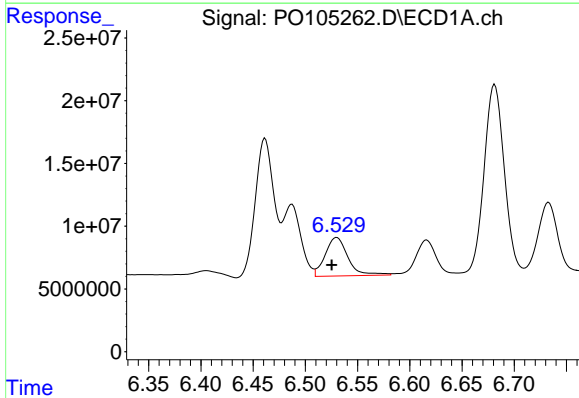
R.T.: 5.784 min
 Delta R.T.: 0.000 min
 Response: 3539346
 Conc: 23.50 ng/ml

Instrument :
 ECD_O
 ClientSampleId :
 AR1254CCC500



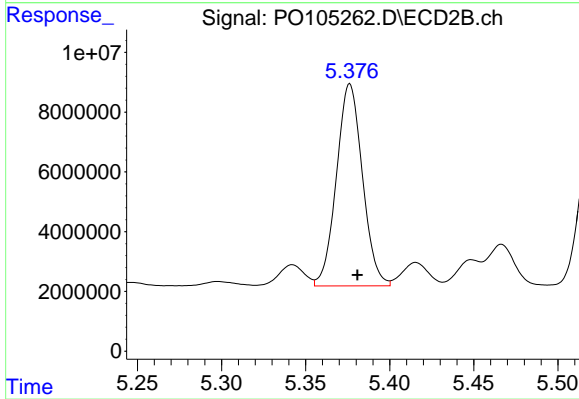
#19 AR-1242-4

R.T.: 4.863 min
 Delta R.T.: -0.006 min
 Response: 10132516
 Conc: 181.06 ng/ml



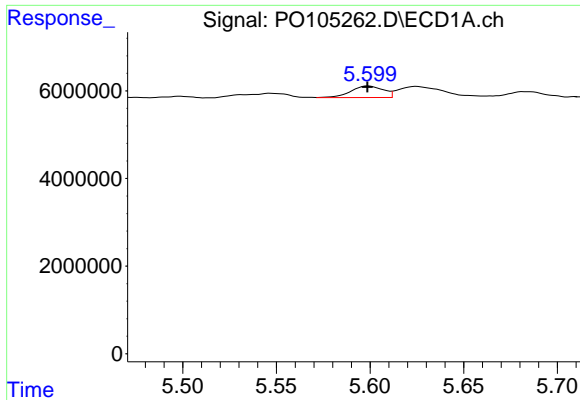
#20 AR-1242-5

R.T.: 6.530 min
 Delta R.T.: 0.005 min
 Response: 46628876
 Conc: 279.46 ng/ml



#20 AR-1242-5

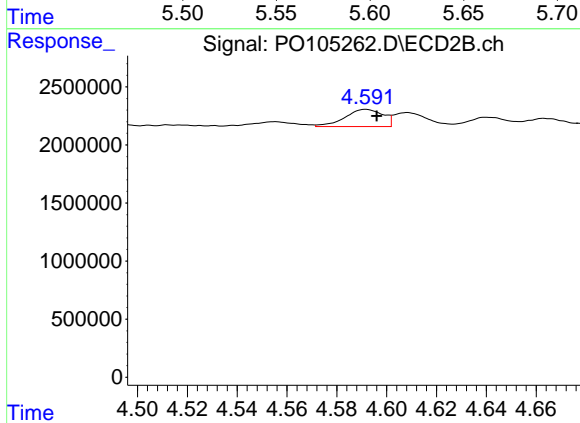
R.T.: 5.376 min
 Delta R.T.: -0.004 min
 Response: 72853882
 Conc: 1027.30 ng/ml



#21 AR-1248-1

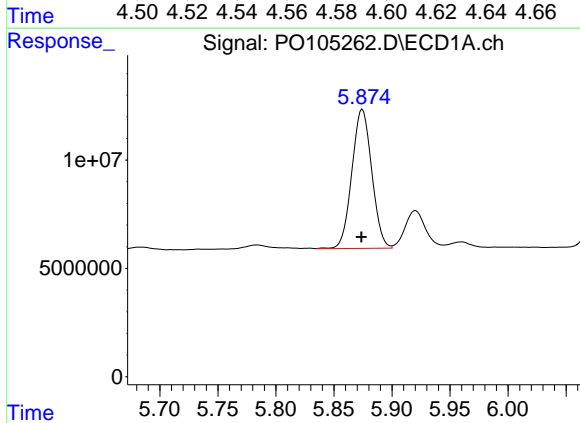
R.T.: 5.599 min
 Delta R.T.: 0.000 min
 Response: 3173640
 Conc: 20.47 ng/ml

Instrument :
 ECD_O
 ClientSampleId :
 AR1254CCC500



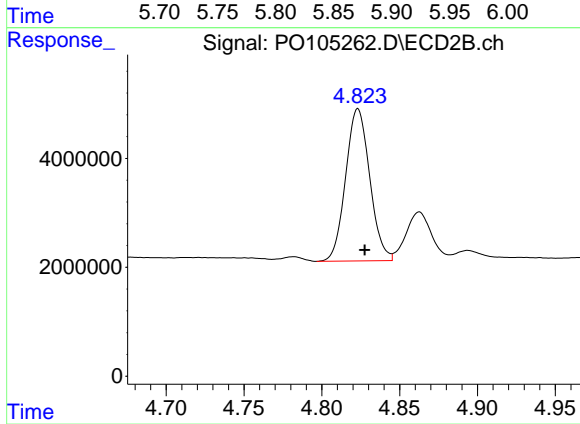
#21 AR-1248-1

R.T.: 4.592 min
 Delta R.T.: -0.004 min
 Response: 1578074
 Conc: 25.75 ng/ml



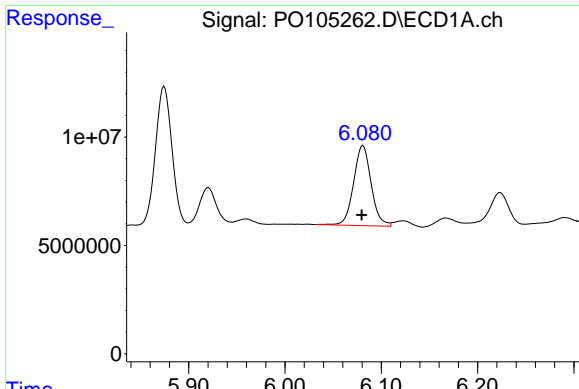
#22 AR-1248-2

R.T.: 5.875 min
 Delta R.T.: 0.000 min
 Response: 76536473
 Conc: 346.96 ng/ml



#22 AR-1248-2

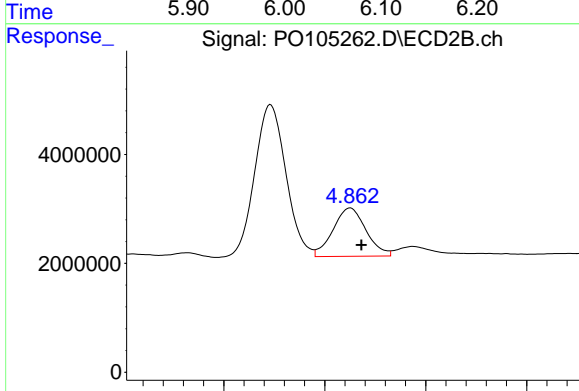
R.T.: 4.823 min
 Delta R.T.: -0.004 min
 Response: 30171888
 Conc: 362.99 ng/ml



#23 AR-1248-3

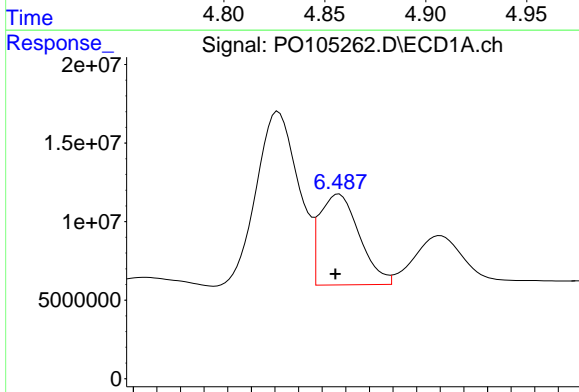
R.T.: 6.081 min
 Delta R.T.: 0.001 min
 Response: 46858623
 Conc: 190.85 ng/ml

Instrument :
 ECD_O
 ClientSampleId :
 AR1254CCC500



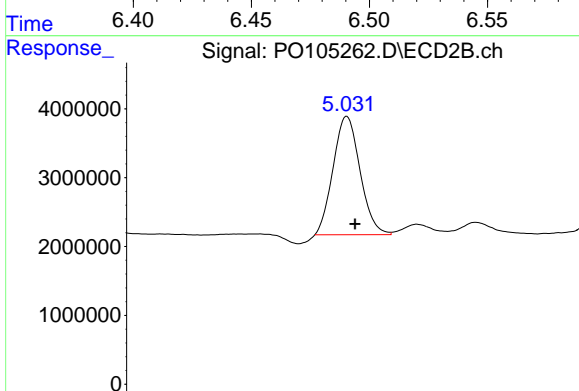
#23 AR-1248-3

R.T.: 4.863 min
 Delta R.T.: -0.005 min
 Response: 10132516
 Conc: 116.27 ng/ml



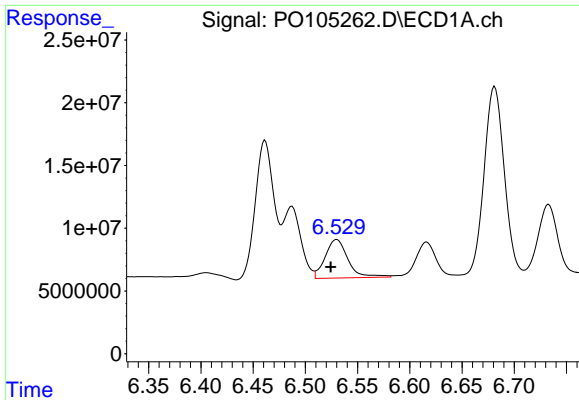
#24 AR-1248-4

R.T.: 6.487 min
 Delta R.T.: 0.002 min
 Response: 67696894
 Conc: 223.79 ng/ml



#24 AR-1248-4

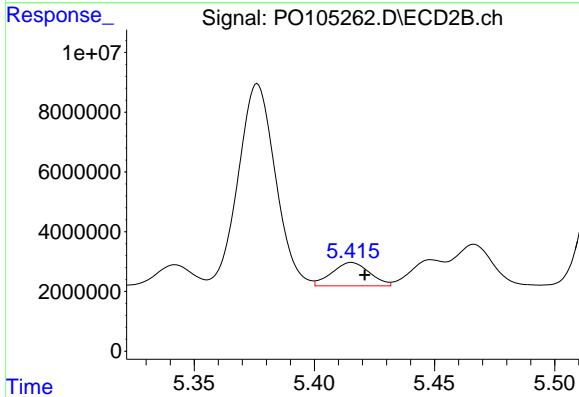
R.T.: 5.031 min
 Delta R.T.: -0.005 min
 Response: 17928110
 Conc: 173.72 ng/ml



#25 AR-1248-5

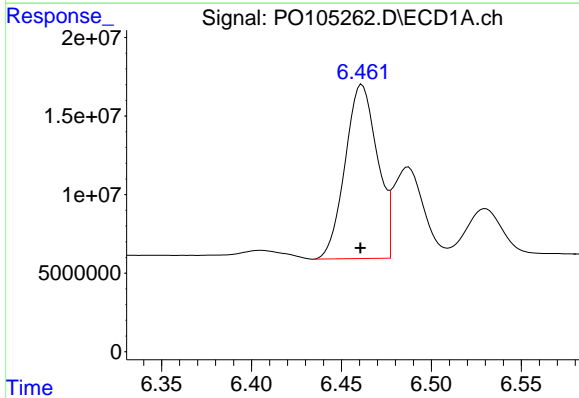
R.T.: 6.530 min
 Delta R.T.: 0.006 min
 Response: 46628876
 Conc: 164.06 ng/ml

Instrument :
 ECD_O
 ClientSampleId :
 AR1254CCC500



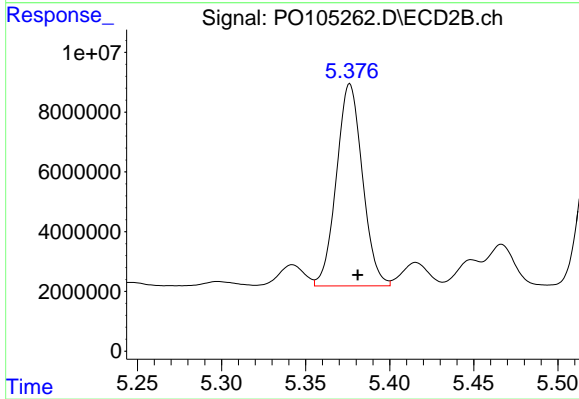
#25 AR-1248-5

R.T.: 5.416 min
 Delta R.T.: -0.005 min
 Response: 8530677
 Conc: 82.97 ng/ml



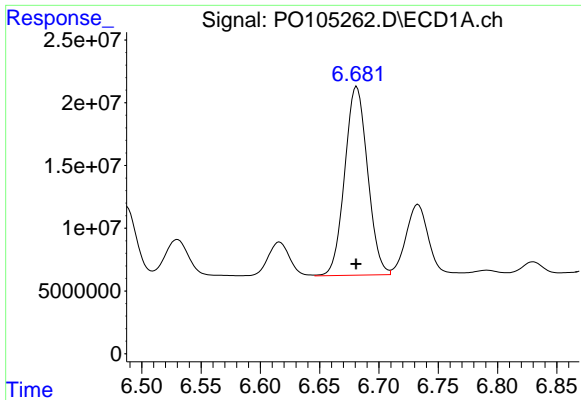
#26 AR-1254-1

R.T.: 6.461 min
 Delta R.T.: 0.000 min
 Response: 137944756
 Conc: 476.61 ng/ml



#26 AR-1254-1

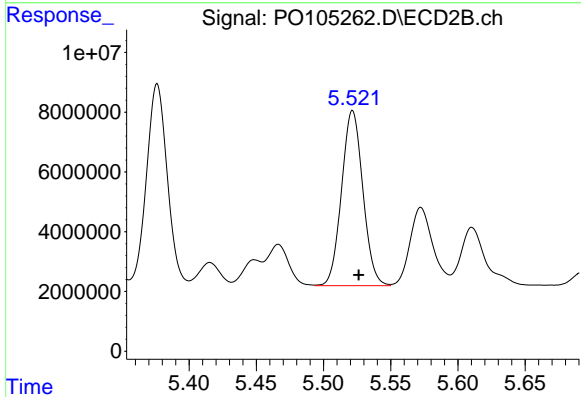
R.T.: 5.376 min
 Delta R.T.: -0.005 min
 Response: 72853882
 Conc: 485.53 ng/ml



#27 AR-1254-2

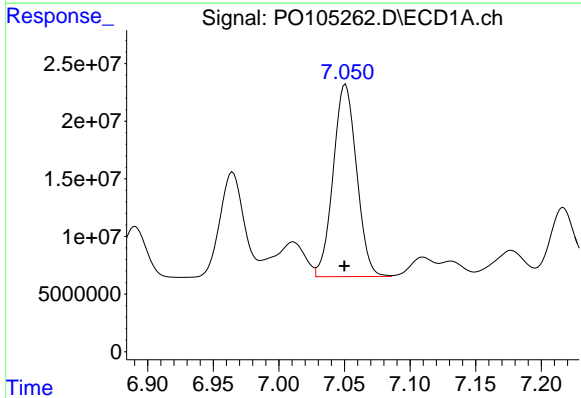
R.T.: 6.681 min
 Delta R.T.: 0.000 min
 Response: 201566158
 Conc: 485.41 ng/ml

Instrument :
 ECD_O
 ClientSampleId :
 AR1254CCC500



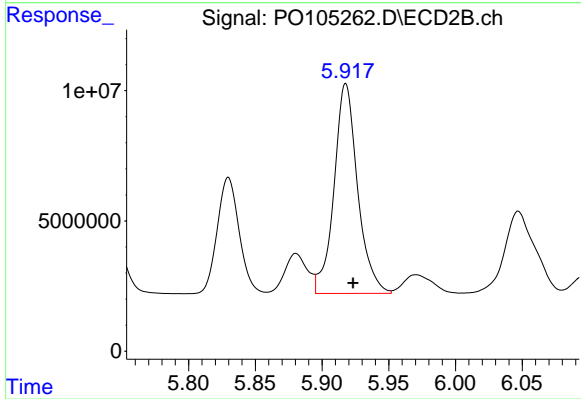
#27 AR-1254-2

R.T.: 5.522 min
 Delta R.T.: -0.005 min
 Response: 64552190
 Conc: 482.25 ng/ml



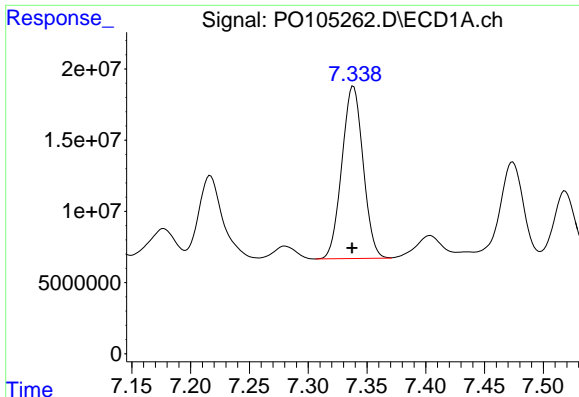
#28 AR-1254-3

R.T.: 7.051 min
 Delta R.T.: 0.000 min
 Response: 207415787
 Conc: 496.82 ng/ml



#28 AR-1254-3

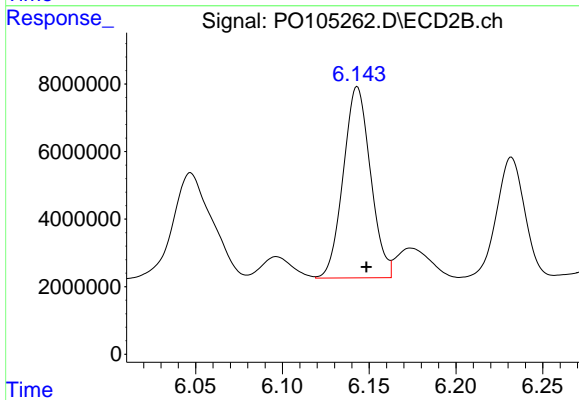
R.T.: 5.918 min
 Delta R.T.: -0.006 min
 Response: 99137185
 Conc: 466.59 ng/ml



#29 AR-1254-4

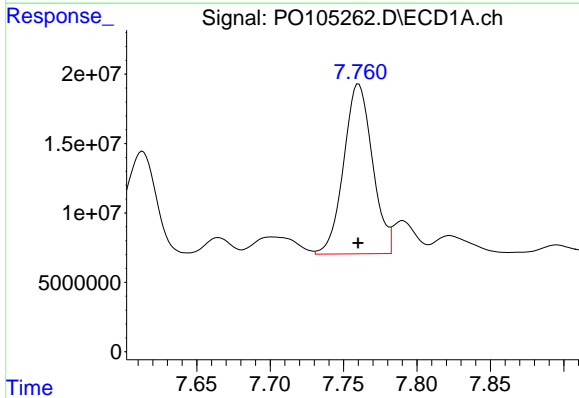
R.T.: 7.338 min
 Delta R.T.: 0.001 min
 Response: 151987542
 Conc: 486.30 ng/ml

Instrument :
 ECD_O
 ClientSampleId :
 AR1254CCC500



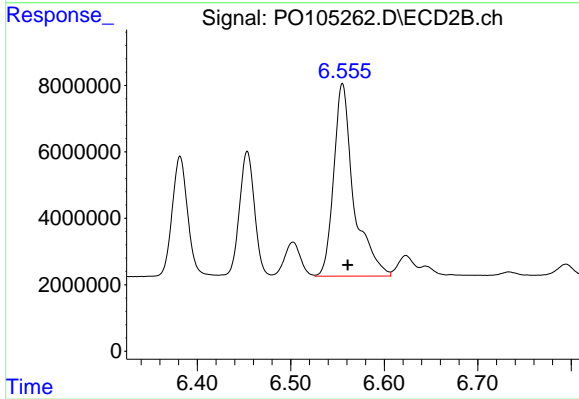
#29 AR-1254-4

R.T.: 6.143 min
 Delta R.T.: -0.005 min
 Response: 61867100
 Conc: 465.82 ng/ml



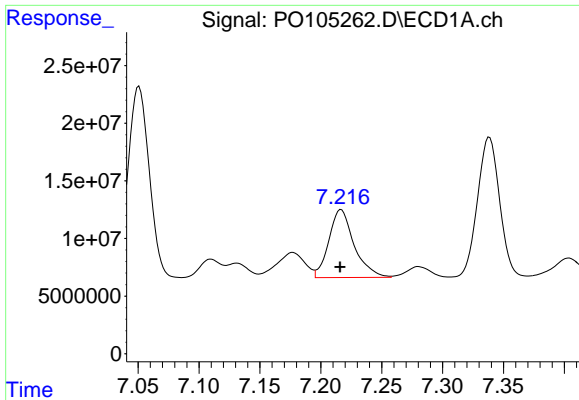
#30 AR-1254-5

R.T.: 7.760 min
 Delta R.T.: 0.000 min
 Response: 166591078
 Conc: 455.32 ng/ml



#30 AR-1254-5

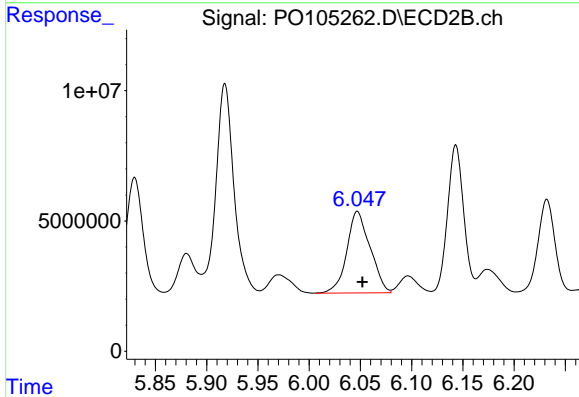
R.T.: 6.555 min
 Delta R.T.: -0.005 min
 Response: 86295100
 Conc: 464.90 ng/ml



#31 AR-1260-1

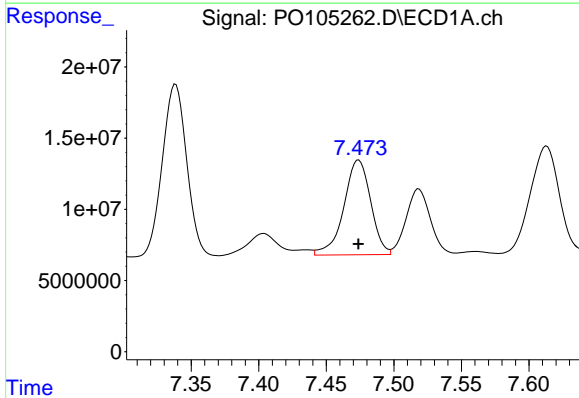
R.T.: 7.217 min
 Delta R.T.: 0.000 min
 Response: 85325350
 Conc: 268.72 ng/ml

Instrument :
 ECD_O
 ClientSampleId :
 AR1254CCC500



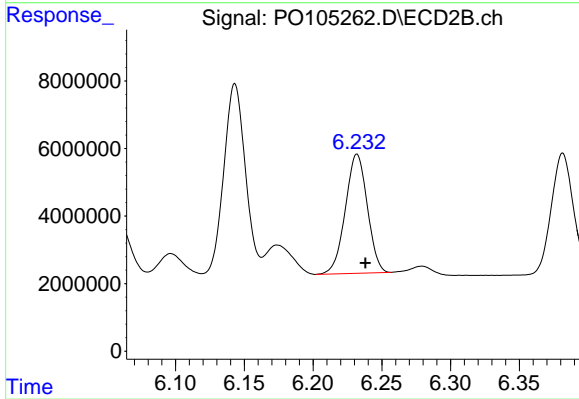
#31 AR-1260-1

R.T.: 6.047 min
 Delta R.T.: -0.005 min
 Response: 49427431
 Conc: 362.91 ng/ml



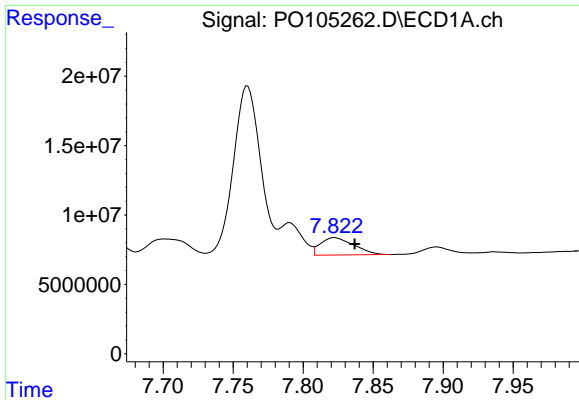
#32 AR-1260-2

R.T.: 7.474 min
 Delta R.T.: 0.000 min
 Response: 92281680
 Conc: 253.75 ng/ml



#32 AR-1260-2

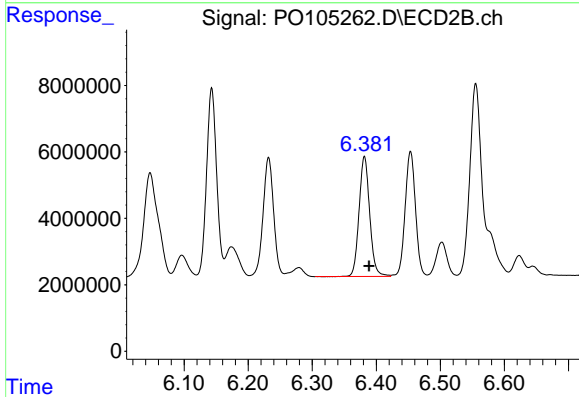
R.T.: 6.232 min
 Delta R.T.: -0.006 min
 Response: 39199688
 Conc: 232.97 ng/ml



#33 AR-1260-3

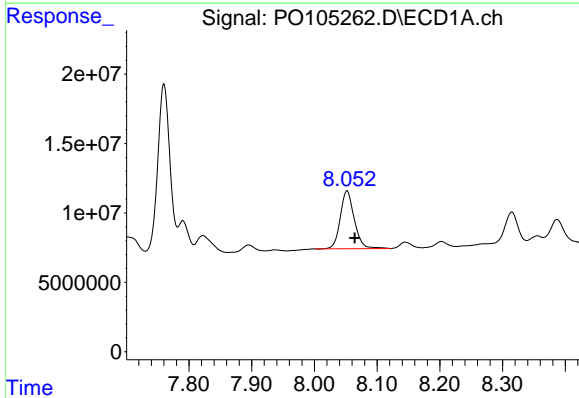
R.T.: 7.822 min
 Delta R.T.: -0.014 min
 Response: 20716162
 Conc: 80.79 ng/ml

Instrument :
 ECD_O
 ClientSampleId :
 AR1254CCC500



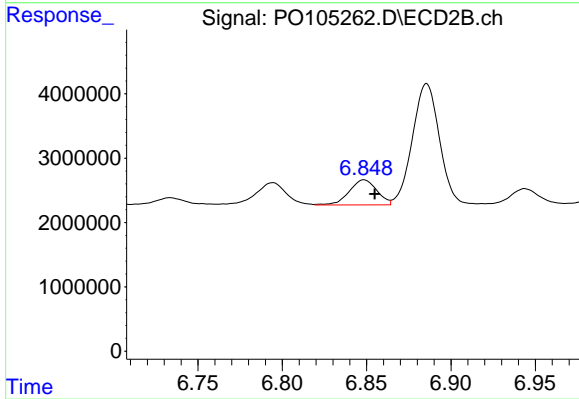
#33 AR-1260-3

R.T.: 6.382 min
 Delta R.T.: -0.007 min
 Response: 41609567
 Conc: 246.71 ng/ml



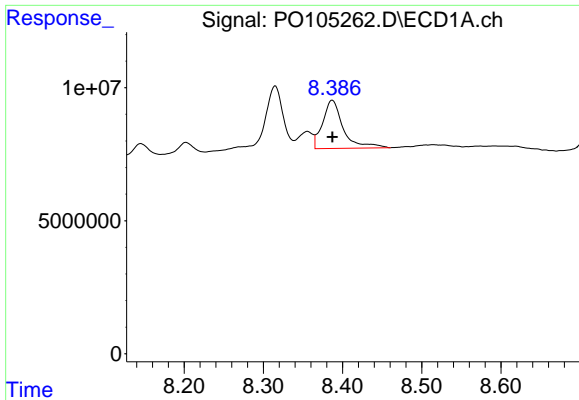
#34 AR-1260-4

R.T.: 8.052 min
 Delta R.T.: -0.012 min
 Response: 64714038
 Conc: 227.00 ng/ml



#34 AR-1260-4

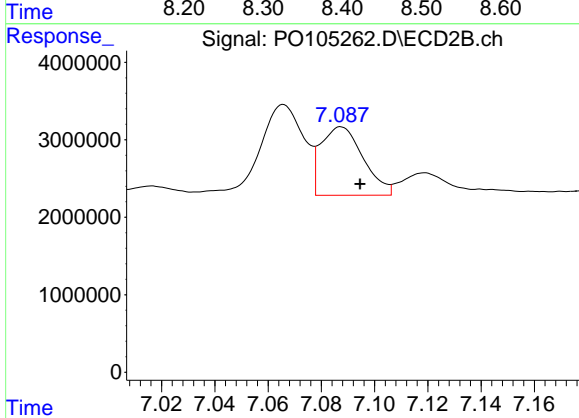
R.T.: 6.848 min
 Delta R.T.: -0.006 min
 Response: 4477572
 Conc: 40.89 ng/ml



#35 AR-1260-5

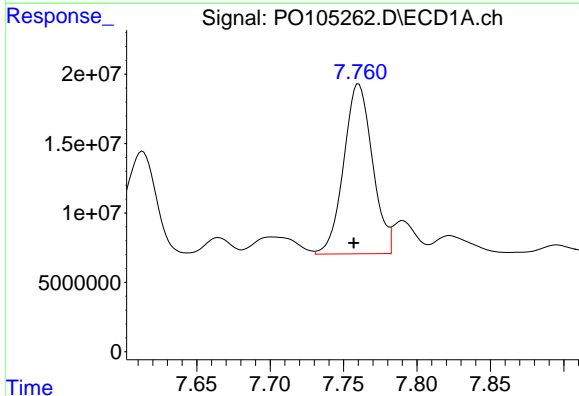
R.T.: 8.387 min
 Delta R.T.: 0.000 min
 Response: 32789721
 Conc: 58.66 ng/ml

Instrument :
 ECD_O
 ClientSampleId :
 AR1254CCC500



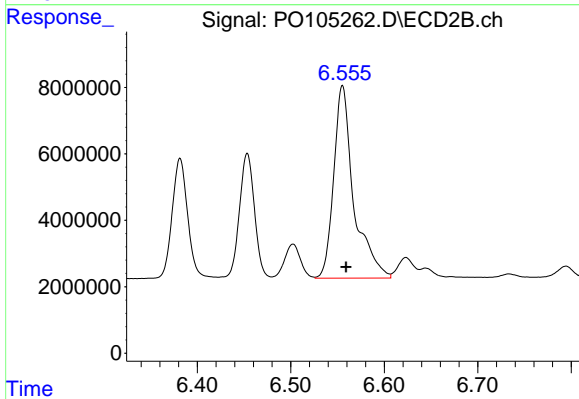
#35 AR-1260-5

R.T.: 7.087 min
 Delta R.T.: -0.007 min
 Response: 9724233
 Conc: 38.04 ng/ml



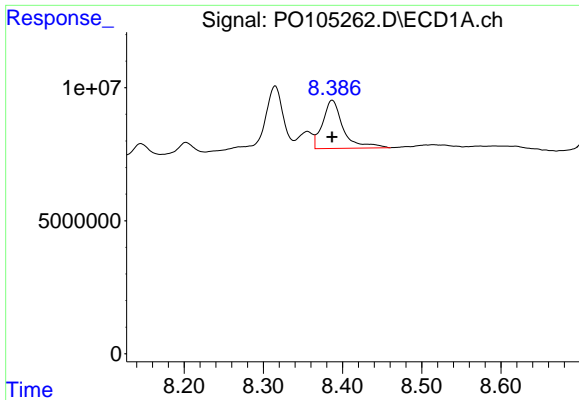
#36 AR-1262-1

R.T.: 7.760 min
 Delta R.T.: 0.003 min
 Response: 166591078
 Conc: 572.30 ng/ml



#36 AR-1262-1

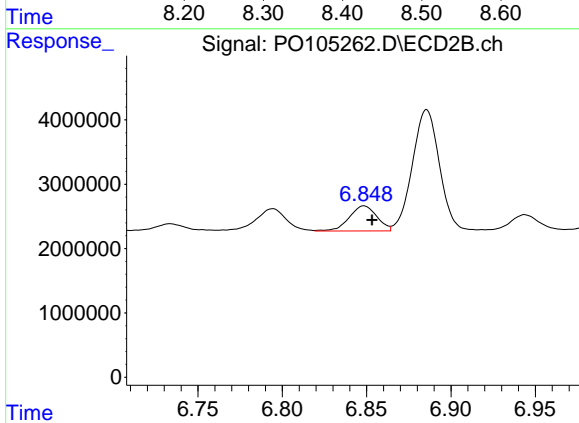
R.T.: 6.555 min
 Delta R.T.: -0.004 min
 Response: 86295100
 Conc: 853.52 ng/ml



#37 AR-1262-2

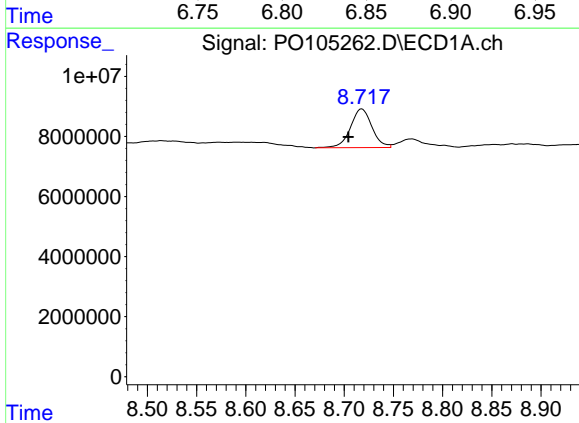
R.T.: 8.387 min
 Delta R.T.: 0.000 min
 Response: 32789721
 Conc: 44.64 ng/ml

Instrument :
 ECD_O
 ClientSampleId :
 AR1254CCC500



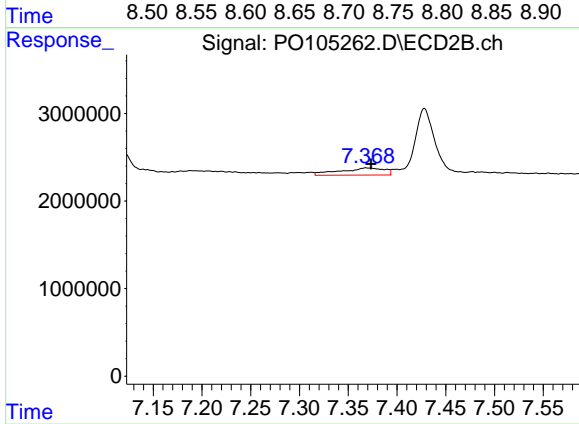
#37 AR-1262-2

R.T.: 6.848 min
 Delta R.T.: -0.005 min
 Response: 4477572
 Conc: 27.09 ng/ml



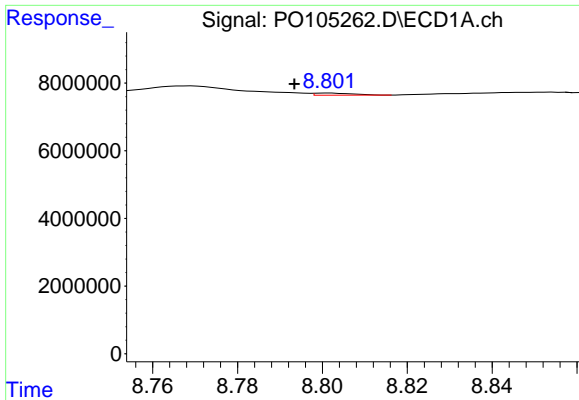
#38 AR-1262-3

R.T.: 8.718 min
 Delta R.T.: 0.014 min
 Response: 19619691
 Conc: 41.26 ng/ml



#38 AR-1262-3

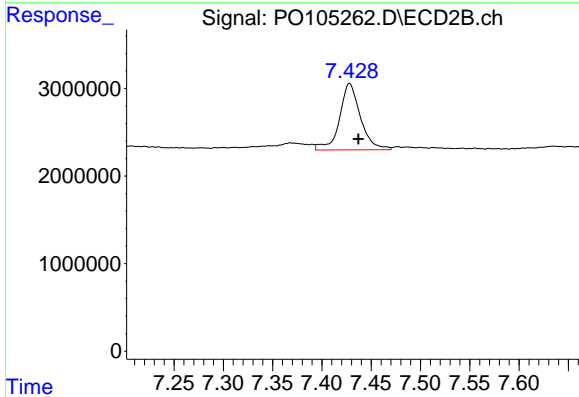
R.T.: 7.368 min
 Delta R.T.: -0.005 min
 Response: 2578337
 Conc: 20.51 ng/ml



#39 AR-1262-4

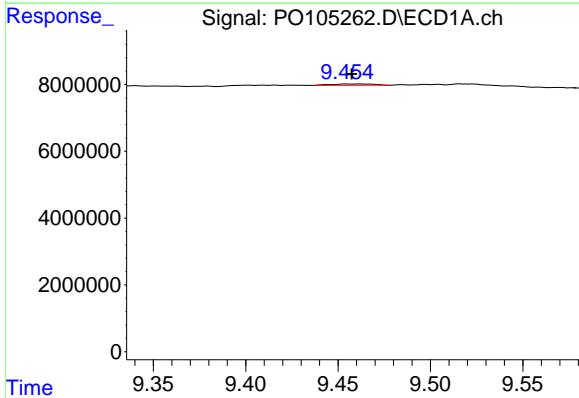
R.T.: 8.801 min
 Delta R.T.: 0.008 min
 Response: 383763
 Conc: 1.11 ng/ml

Instrument :
 ECD_O
 ClientSampleId :
 AR1254CCC500



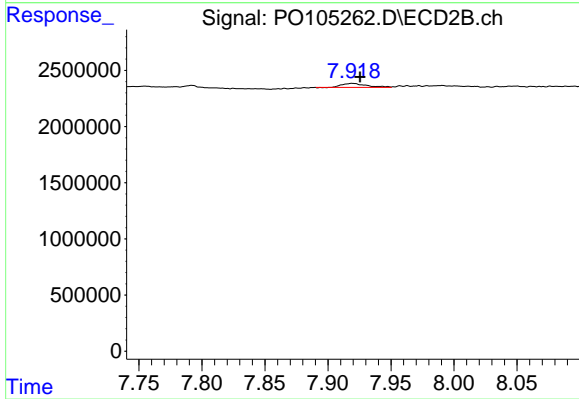
#39 AR-1262-4

R.T.: 7.428 min
 Delta R.T.: -0.009 min
 Response: 11189066
 Conc: 48.76 ng/ml



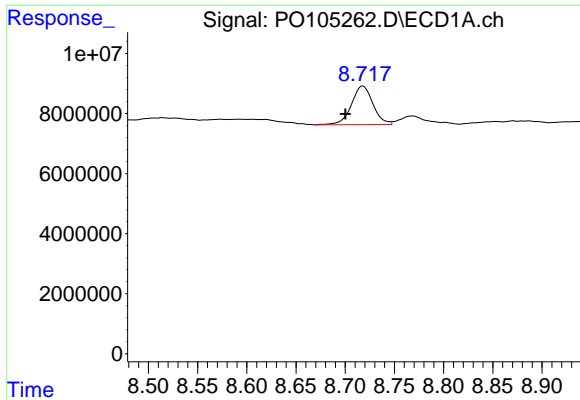
#40 AR-1262-5

R.T.: 9.462 min
 Delta R.T.: 0.005 min
 Response: 644265
 Conc: 2.60 ng/ml



#40 AR-1262-5

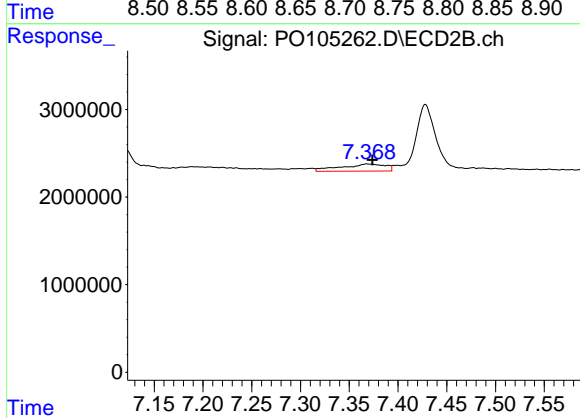
R.T.: 7.919 min
 Delta R.T.: -0.006 min
 Response: 487344
 Conc: 4.96 ng/ml



#41 AR-1268-1

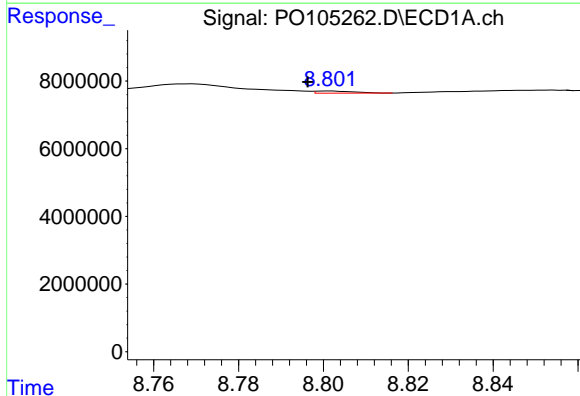
R.T.: 8.718 min
 Delta R.T.: 0.018 min
 Response: 19619691
 Conc: 24.88 ng/ml

Instrument :
 ECD_O
 ClientSampleId :
 AR1254CCC500



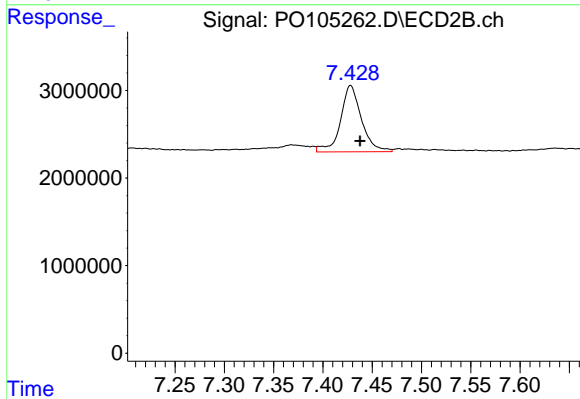
#41 AR-1268-1

R.T.: 7.368 min
 Delta R.T.: -0.005 min
 Response: 2578337
 Conc: 7.33 ng/ml



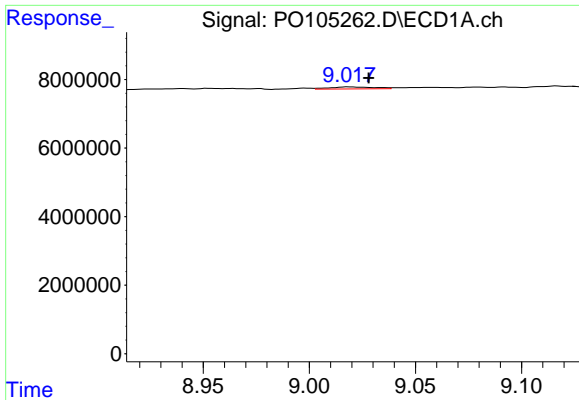
#42 AR-1268-2

R.T.: 8.801 min
 Delta R.T.: 0.005 min
 Response: 383763
 Conc: 0.55 ng/ml



#42 AR-1268-2

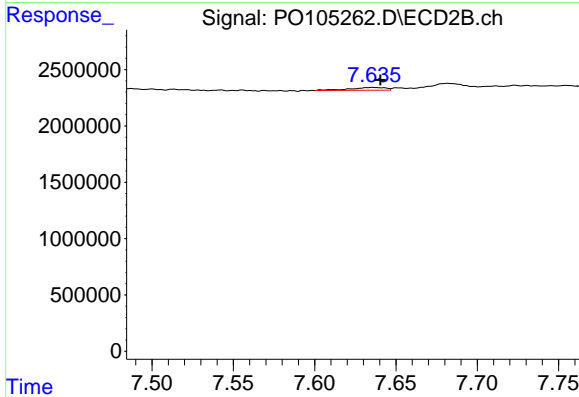
R.T.: 7.428 min
 Delta R.T.: -0.010 min
 Response: 11189066
 Conc: 36.08 ng/ml



#43 AR-1268-3

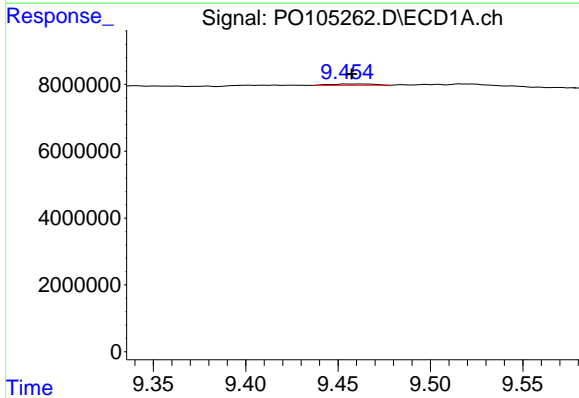
R.T.: 9.018 min
 Delta R.T.: -0.009 min
 Response: 838723
 Conc: 1.41 ng/ml

Instrument :
 ECD_O
 ClientSampleId :
 AR1254CCC500



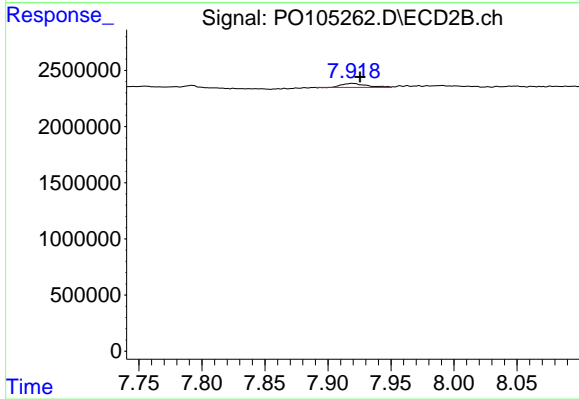
#43 AR-1268-3

R.T.: 7.636 min
 Delta R.T.: -0.005 min
 Response: 379182
 Conc: 1.51 ng/ml



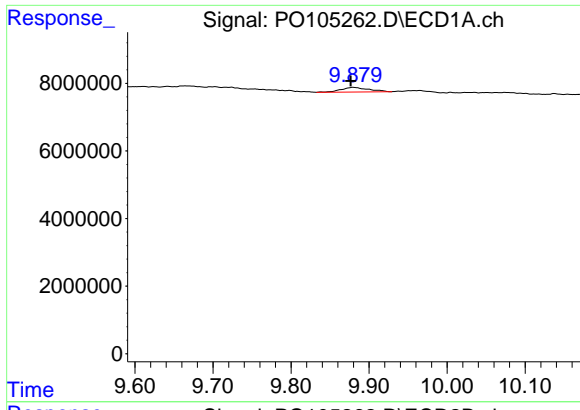
#44 AR-1268-4

R.T.: 9.462 min
 Delta R.T.: 0.004 min
 Response: 644265
 Conc: 2.55 ng/ml



#44 AR-1268-4

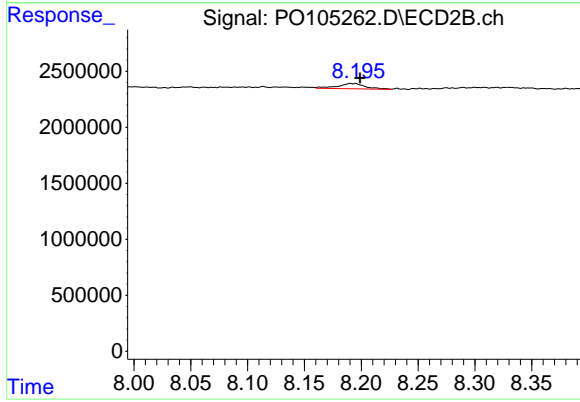
R.T.: 7.919 min
 Delta R.T.: -0.006 min
 Response: 487344
 Conc: 4.68 ng/ml



#45 AR-1268-5

R.T.: 9.880 min
 Delta R.T.: 0.003 min
 Response: 3361841
 Conc: 1.71 ng/ml

Instrument :
 ECD_O
 ClientSampleId :
 AR1254CCC500



#45 AR-1268-5

R.T.: 8.195 min
 Delta R.T.: -0.004 min
 Response: 804833
 Conc: 1.20 ng/ml