

Data Path : Z:\pestpcbsrv\HPCHEM1\ECD_0\Data\P0080725\
 Data File : P0112801.D
 Signal(s) : Signal #1: ECD1A.ch Signal #2: ECD2B.ch
 Acq On : 07 Aug 2025 13:12
 Operator : YP/AJ
 Sample : Q2786-01
 Misc :
 ALS Vial : 11 Sample Multiplier: 1

Instrument :
 ECD_0
 ClientSampleId :
 PL-01-08062025

Integration File signal 1: autoint1.e
 Integration File signal 2: autoint2.e
 Quant Time: Aug 08 03:29:40 2025
 Quant Method : Z:\pestpcbsrv\HPCHEM1\ECD_0\methods\P0072325.M
 Quant Title : GC EXTRACTABLES
 QLast Update : Thu Jul 24 04:54:06 2025
 Response via : Initial Calibration
 Integrator: ChemStation

Volume Inj. : 2 µl
 Signal #1 Phase : ZB-MR1 Signal #2 Phase: ZB-MR2
 Signal #1 Info : 30Mx0.32mmx 0.50µ Signal #2 Info : 30M x 0.32mm x 0.25µm

Compound	RT#1	RT#2	Resp#1	Resp#2	ng/ml	ng/ml

System Monitoring Compounds						
1) SA Tetrachlo...	3.665	3.657	128.8E6	78450198	15.836	15.787
2) SA Decachlor...	8.684	8.630	84199584	24163364	11.516	13.674

Target Compounds

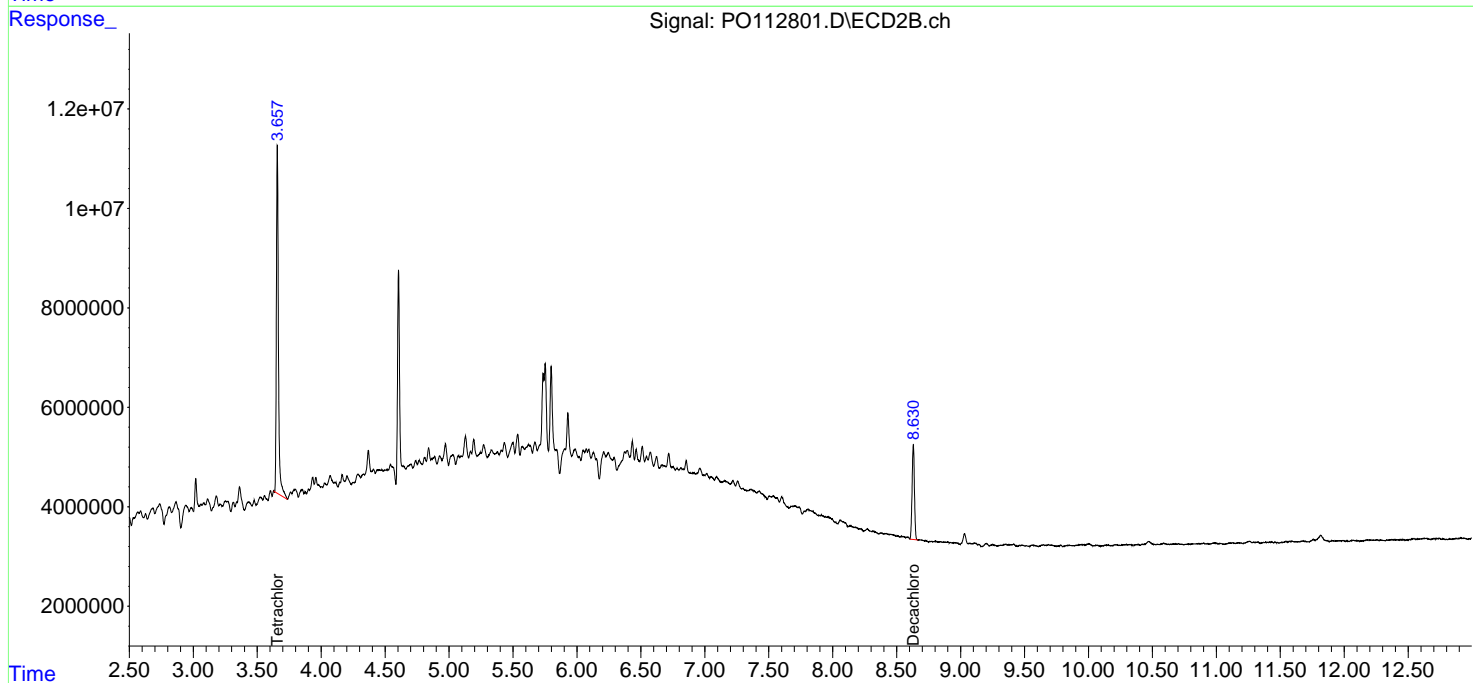
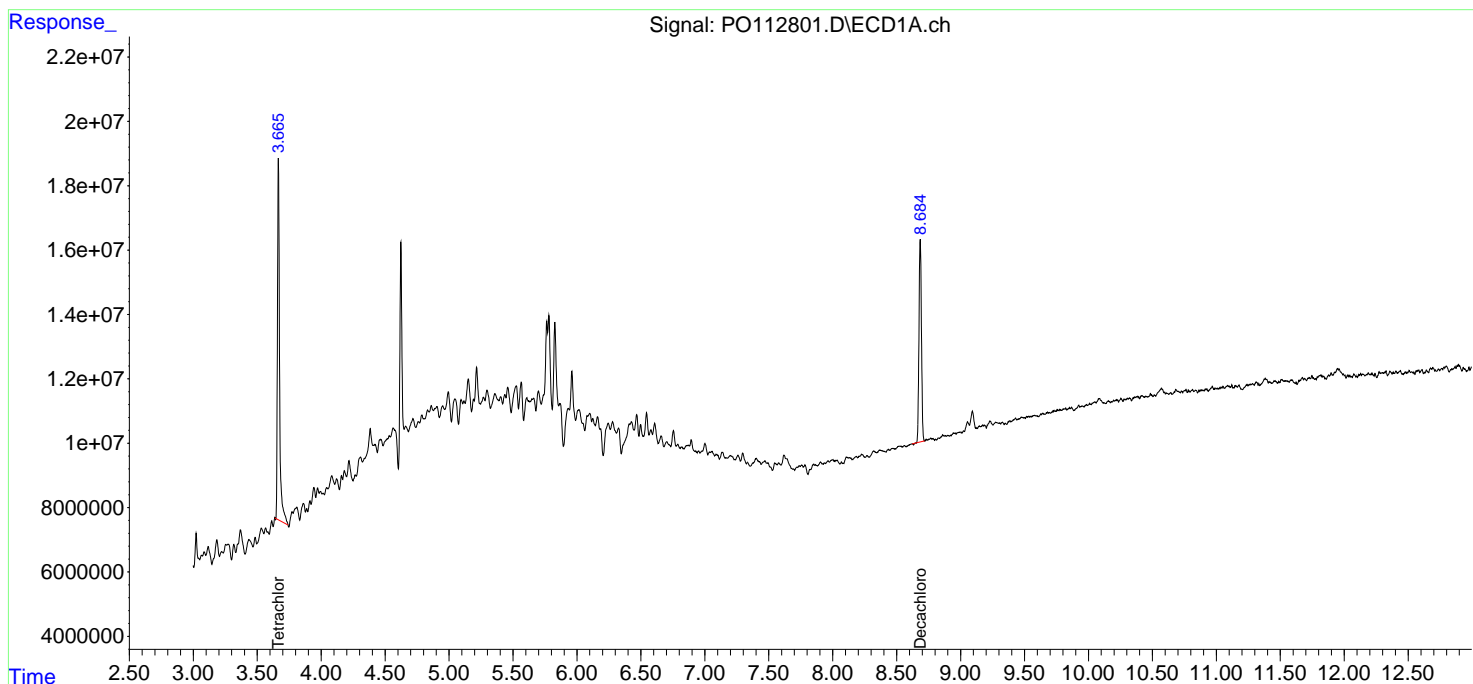
(f)=RT Delta > 1/2 Window (#)=Amounts differ by > 25% (m)=manual int.

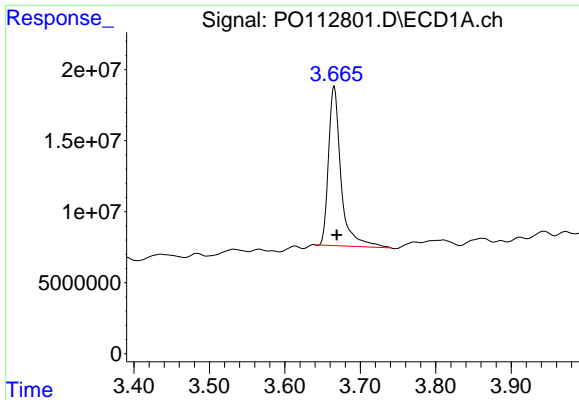
Data Path : Z:\pestpcbsrv\HPCHEM1\ECD_O\Data\P0080725\
 Data File : P0112801.D
 Signal(s) : Signal #1: ECD1A.ch Signal #2: ECD2B.ch
 Acq On : 07 Aug 2025 13:12
 Operator : YP/AJ
 Sample : Q2786-01
 Misc :
 ALS Vial : 11 Sample Multiplier: 1

Instrument :
 ECD_O
 ClientSampleId :
 PL-01-08062025

Integration File signal 1: autoint1.e
 Integration File signal 2: autoint2.e
 Quant Time: Aug 08 03:29:40 2025
 Quant Method : Z:\pestpcbsrv\HPCHEM1\ECD_O\methods\P0072325.M
 Quant Title : GC EXTRACTABLES
 QLast Update : Thu Jul 24 04:54:06 2025
 Response via : Initial Calibration
 Integrator: ChemStation

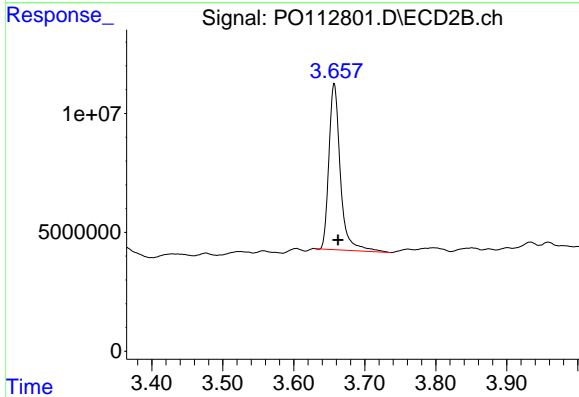
Volume Inj. : 2 µl
 Signal #1 Phase : ZB-MR1 Signal #2 Phase: ZB-MR2
 Signal #1 Info : 30Mx0.32mmx 0.50µ Signal #2 Info : 30M x 0.32mm x 0.25µm



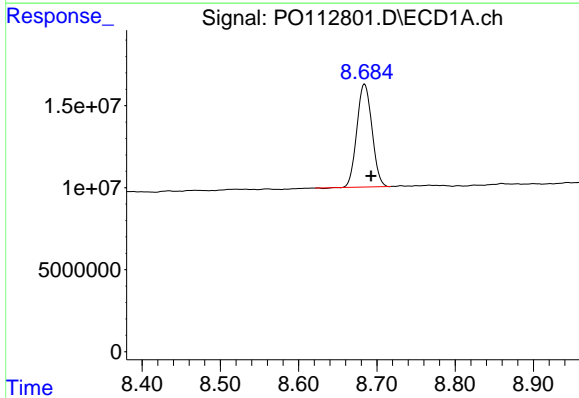


#1 Tetrachloro-m-xylene
 R.T.: 3.665 min
 Delta R.T.: -0.004 min
 Response: 128771977
 Conc: 15.84 ng/ml

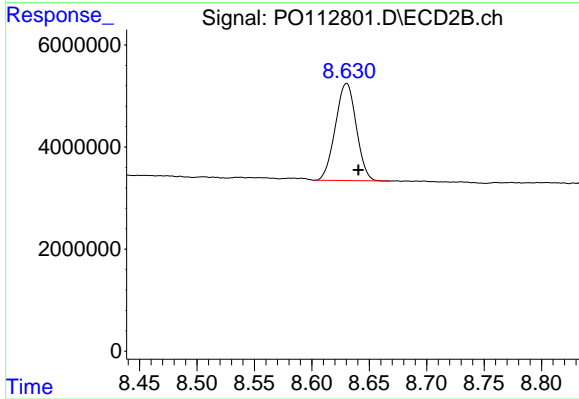
Instrument :
 ECD_O
 ClientSampleId :
 PL-01-08062025



#1 Tetrachloro-m-xylene
 R.T.: 3.657 min
 Delta R.T.: -0.005 min
 Response: 78450198
 Conc: 15.79 ng/ml



#2 Decachlorobiphenyl
 R.T.: 8.684 min
 Delta R.T.: -0.008 min
 Response: 84199584
 Conc: 11.52 ng/ml



#2 Decachlorobiphenyl
 R.T.: 8.630 min
 Delta R.T.: -0.010 min
 Response: 24163364
 Conc: 13.67 ng/ml