

Data Path : Z:\pestpcbsrv\HPCHEM1\ECD_0\Data\P0080823\
 Data File : P0096823.D
 Signal(s) : Signal #1: ECD1A.ch Signal #2: ECD2B.ch
 Acq On : 09 Aug 2023 08:23
 Operator : YP/AJ
 Sample : 03572-07
 Misc : AR1221 LOD 40 PPB
 ALS Vial : 54 Sample Multiplier: 1

Instrument :
 ECD_0
 ClientSampleId :

Integration File signal 1: autoint1.e
 Integration File signal 2: autoint2.e
 Quant Time: Aug 09 08:54:38 2023
 Quant Method : Z:\pestpcbsrv\HPCHEM1\ECD_0\methods\P0080723.M
 Quant Title : GC EXTRACTABLES
 QLast Update : Tue Aug 08 04:34:41 2023
 Response via : Initial Calibration
 Integrator: ChemStation

Volume Inj. : 2 µl
 Signal #1 Phase : ZB-MR2 Signal #2 Phase: ZB-MR2
 Signal #1 Info : 30Mx0.32mmx 0.50µ Signal #2 Info : 30M x 0.32mm x 0.25µm

Compound	RT#1	RT#2	Resp#1	Resp#2	ng/ml	ng/ml

System Monitoring Compounds						
1) SA Tetrachlo...	4.410	3.619	67617425	26765287	20.427	20.219
2) SA Decachlor...	10.350	8.641	49102353	26646967	22.440	23.032
Target Compounds						
3) L1 AR-1016-1	5.594	4.723	340217	385469	3.612	8.694 #
4) L1 AR-1016-2	5.618	4.723	352908	385469	2.638	6.302 #
5) L1 AR-1016-3	5.681	0.000	393924	0	4.527	N.D. #
6) L1 AR-1016-4	5.779	0.000	118469	0	1.764	N.D. #
7) L1 AR-1016-5	6.078	5.160	100336	181160	1.437	4.712 #
8) L2 AR-1221-1	4.621	3.833	1780150	692111	43.679	39.875
9) L2 AR-1221-2	4.713	3.919	2119699	764348	69.773	59.157
10) L2 AR-1221-3	4.786	3.994	3579848	1512786	40.898	38.111
11) L3 AR-1232-1	4.786	3.994	3579848	1512786	49.084	46.767
12) L3 AR-1232-2	5.323	4.723	494716	385469	12.478	13.360
13) L3 AR-1232-3	5.618	0.000	352908	0	5.769	N.D. #
14) L3 AR-1232-4	5.779	0.000	118469	0	3.882	N.D. #
15) L3 AR-1232-5	5.879	5.160	256694	181160	9.173	11.082
16) L4 AR-1242-1	5.594	4.723	340217	385469	4.059	9.777 #
17) L4 AR-1242-2	5.618	4.723	352908	385469	2.997	7.074 #
18) L4 AR-1242-3	5.681	0.000	393924	0	5.332	N.D. #
19) L4 AR-1242-4	5.779	0.000	118469	0	1.990	N.D. #
20) L4 AR-1242-5	6.515	0.000	17906	0	0.325	N.D. #
21) L5 AR-1248-1	5.594	4.723	340217	385469	5.806	13.736 #
22) L5 AR-1248-2	5.879	0.000	256694	0	2.730	N.D. #
23) L5 AR-1248-3	6.078	0.000	100336	0	1.026	N.D. #
24) L5 AR-1248-4	6.484	5.160	57280	181160	0.631	3.549 #
25) L5 AR-1248-5	6.515	5.597f	17906	1070559	0.203	22.899 #
26) L6 AR-1254-1	6.484	0.000	57280	0	0.524	N.D. #
27) L6 AR-1254-2	6.677	5.651	20053	136162	0.124	2.067 #
28) L6 AR-1254-3	7.068	6.060	817902	558559	5.220	5.527
29) L6 AR-1254-4	7.390f	0.000	1112791	0	11.038	N.D. #
30) L6 AR-1254-5	7.798	6.751f	394482	563640	3.515	6.411 #
31) L7 AR-1260-1	7.206	6.170	168450	457456	1.340	6.501 #
32) L7 AR-1260-2	7.468	6.366	299102	302779	2.220	3.628 #
33) L7 AR-1260-3	7.882	0.000	864993	0	8.335	N.D. #
34) L7 AR-1260-4	8.124	6.988	770634	236201	6.893	3.686 #
35) L7 AR-1260-5	8.437	7.227	258218	144562	1.230	1.043
36) L8 AR-1262-1	7.882	6.821	864993	633496	5.824	16.091 #
37) L8 AR-1262-2	8.437	6.988	258218	236201	1.116	2.912 #
38) L8 AR-1262-3	8.739	7.589f	10031	335380	0.060	5.226 #
39) L8 AR-1262-4	8.856	7.589	123541	335380	1.694	2.952 #
40) L8 AR-1262-5	9.530	0.000	181692	0	2.182	N.D. #
41) L9 AR-1268-1	8.739	7.589f	10031	335380	0.033	1.810 #

Data Path : Z:\pestpcbsrv\HPCHEM1\ECD_0\Data\P0080823\
 Data File : P0096823.D
 Signal(s) : Signal #1: ECD1A.ch Signal #2: ECD2B.ch
 Acq On : 09 Aug 2023 08:23
 Operator : YP/AJ
 Sample : 03572-07
 Misc : AR1221 LOD 40 PPB
 ALS Vial : 54 Sample Multiplier: 1

Instrument :
 ECD_0
 ClientSampleId :

Integration File signal 1: autoint1.e
 Integration File signal 2: autoint2.e
 Quant Time: Aug 09 08:54:38 2023
 Quant Method : Z:\pestpcbsrv\HPCHEM1\ECD_0\methods\P0080723.M
 Quant Title : GC EXTRACTABLES
 QLast Update : Tue Aug 08 04:34:41 2023
 Response via : Initial Calibration
 Integrator: ChemStation

Volume Inj. : 2 µl
 Signal #1 Phase : ZB-MR1 Signal #2 Phase: ZB-MR2
 Signal #1 Info : 30Mx0.32mmx 0.50µ Signal #2 Info : 30M x 0.32mm x 0.25µm

	Compound	RT#1	RT#2	Resp#1	Resp#2	ng/ml	ng/ml
42)	L9 AR-1268-2	8.856	7.589	123541	335380	0.451	2.000 #
43)	L9 AR-1268-3	9.093	7.805	212551	147966	0.832	1.024
44)	L9 AR-1268-4	9.530	0.000	181692	0	1.960	N.D. #
45)	L9 AR-1268-5	9.994	8.389	360581	203217	0.446	0.489

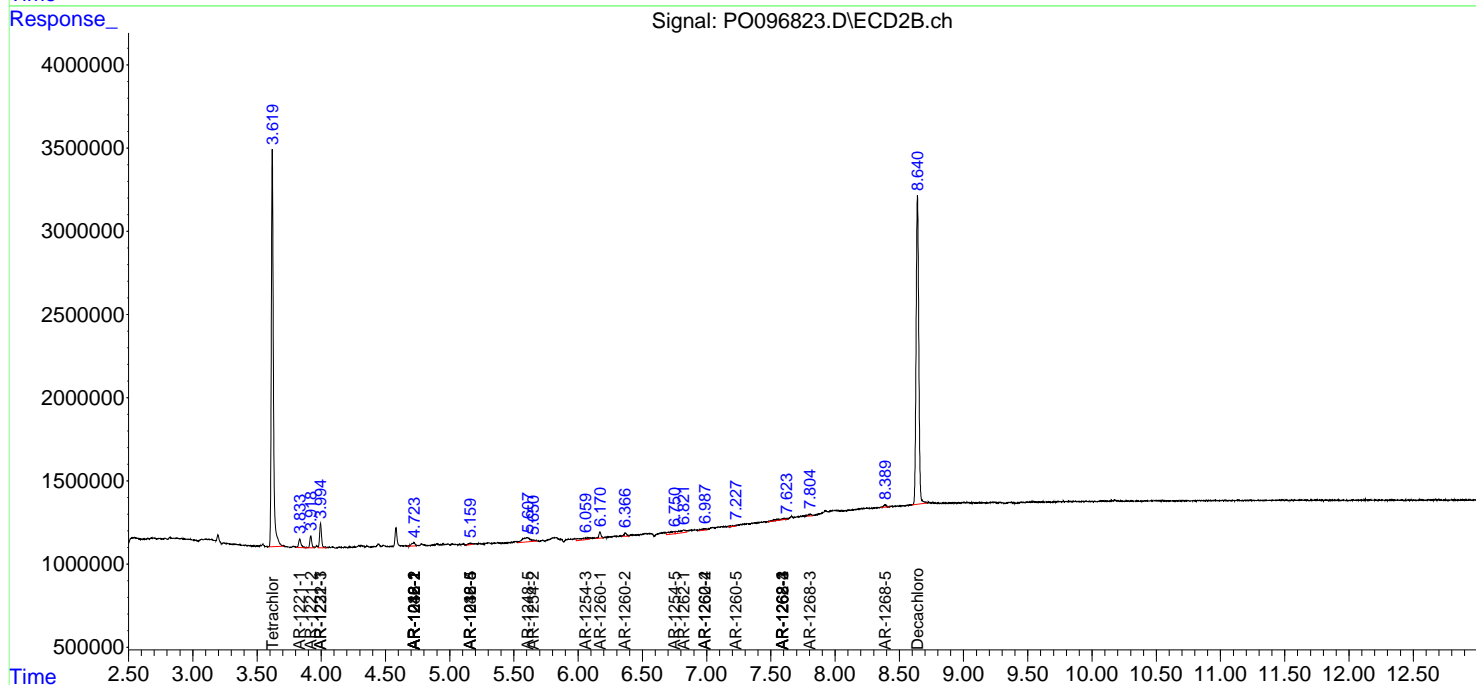
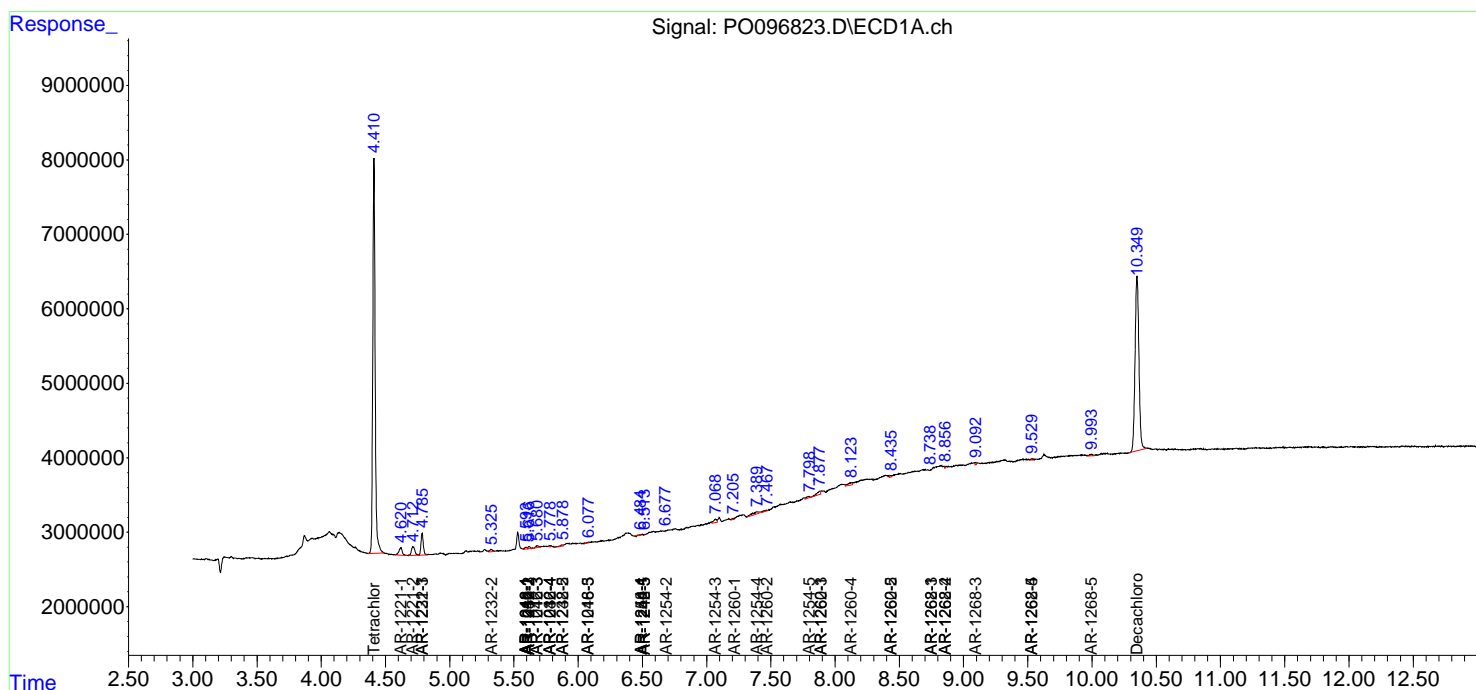
(f)=RT Delta > 1/2 Window (#)=Amounts differ by > 25% (m)=manual int.

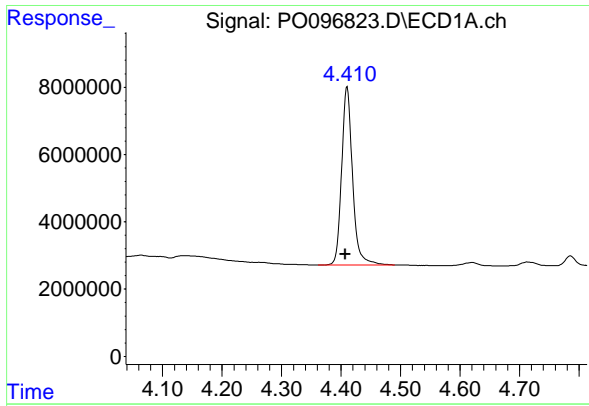
Data Path : Z:\pestpcbsrv\HPCHEM1\ECD_O\Data\PO080823\
 Data File : PO096823.D
 Signal(s) : Signal #1: ECD1A.ch Signal #2: ECD2B.ch
 Acq On : 09 Aug 2023 08:23
 Operator : YP/AJ
 Sample : 03572-07
 Misc : AR1221 LOD 40 PPB
 ALS Vial : 54 Sample Multiplier: 1

Instrument :
 ECD_O
 ClientSampleId :

Integration File signal 1: autoint1.e
 Integration File signal 2: autoint2.e
 Quant Time: Aug 09 08:54:38 2023
 Quant Method : Z:\pestpcbsrv\HPCHEM1\ECD_O\methods\PO080723.M
 Quant Title : GC EXTRACTABLES
 QLast Update : Tue Aug 08 04:34:41 2023
 Response via : Initial Calibration
 Integrator: ChemStation

Volume Inj. : 2 µl
 Signal #1 Phase : ZB-MR1 Signal #2 Phase: ZB-MR2
 Signal #1 Info : 30Mx0.32mmx 0.50µ Signal #2 Info : 30M x 0.32mm x 0.25µm

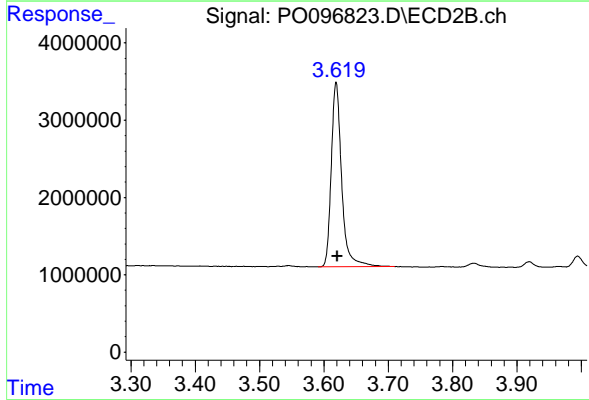




#1 Tetrachloro-m-xylene

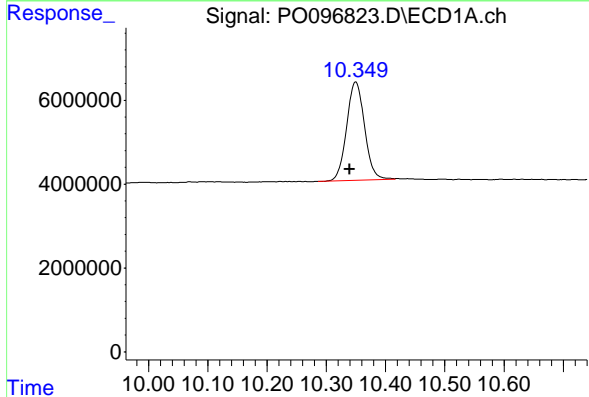
R.T.: 4.410 min
 Delta R.T.: 0.003 min
 Response: 67617425
 Conc: 20.43 ng/ml

Instrument :
 ECD_O
 ClientSampleId :



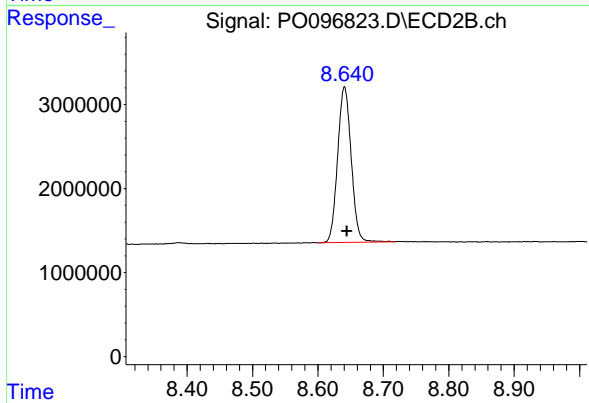
#1 Tetrachloro-m-xylene

R.T.: 3.619 min
 Delta R.T.: -0.002 min
 Response: 26765287
 Conc: 20.22 ng/ml



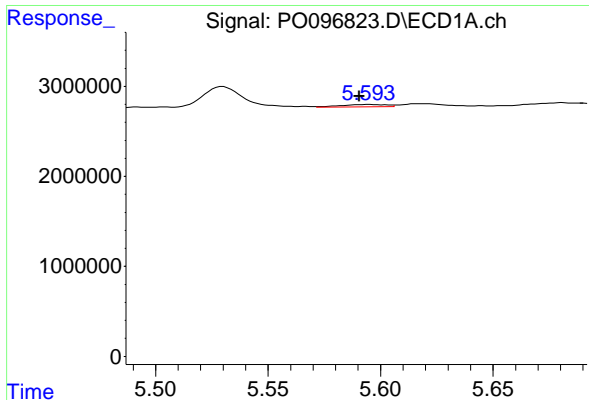
#2 Decachlorobiphenyl

R.T.: 10.350 min
 Delta R.T.: 0.010 min
 Response: 49102353
 Conc: 22.44 ng/ml



#2 Decachlorobiphenyl

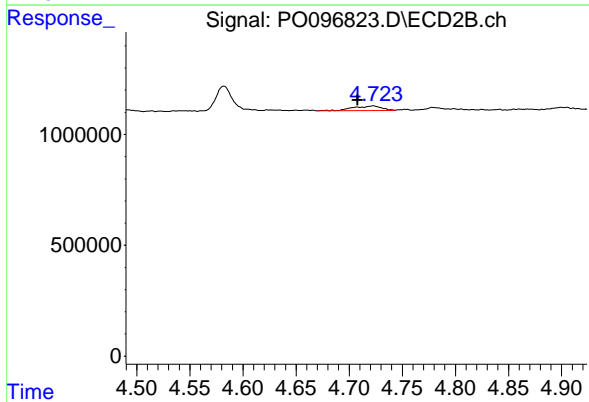
R.T.: 8.641 min
 Delta R.T.: -0.004 min
 Response: 26646967
 Conc: 23.03 ng/ml



#3 AR-1016-1

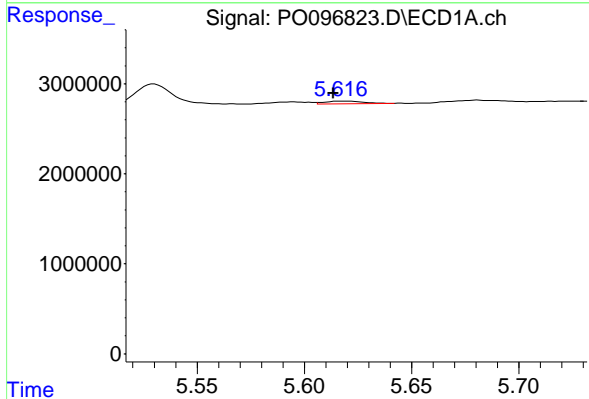
R.T.: 5.594 min
 Delta R.T.: 0.004 min
 Response: 340217
 Conc: 3.61 ng/ml

Instrument :
 ECD_O
 ClientSampleId :



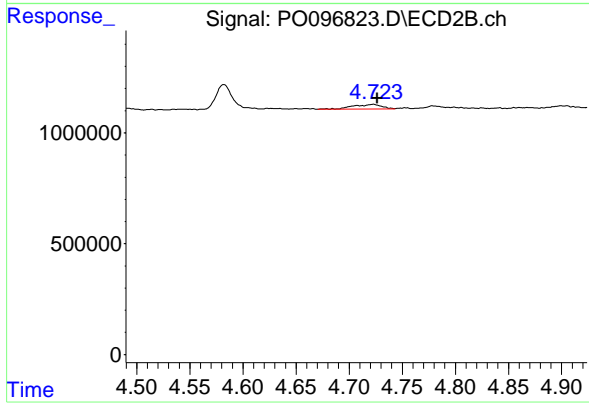
#3 AR-1016-1

R.T.: 4.723 min
 Delta R.T.: 0.015 min
 Response: 385469
 Conc: 8.69 ng/ml



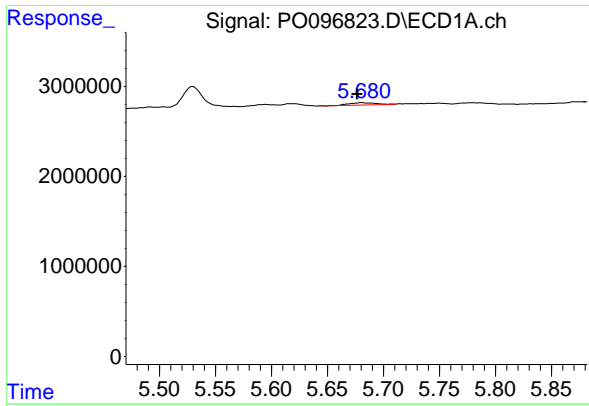
#4 AR-1016-2

R.T.: 5.618 min
 Delta R.T.: 0.004 min
 Response: 352908
 Conc: 2.64 ng/ml



#4 AR-1016-2

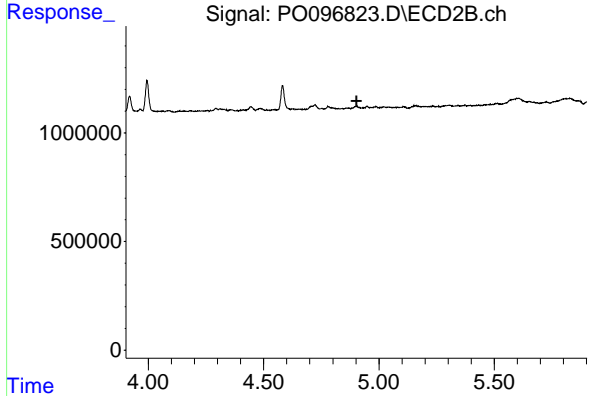
R.T.: 4.723 min
 Delta R.T.: -0.003 min
 Response: 385469
 Conc: 6.30 ng/ml



#5 AR-1016-3

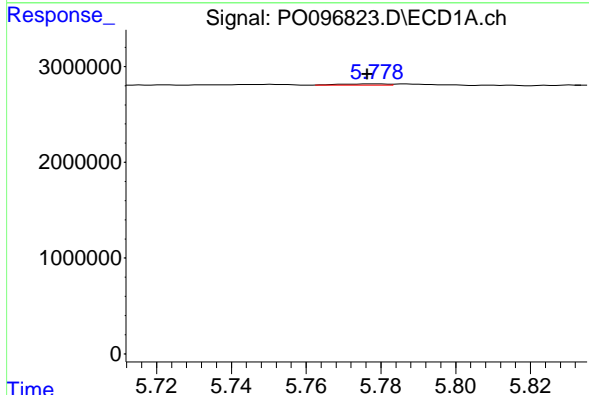
R.T.: 5.681 min
 Delta R.T.: 0.004 min
 Response: 393924
 Conc: 4.53 ng/ml

Instrument :
 ECD_O
 ClientSampleId :



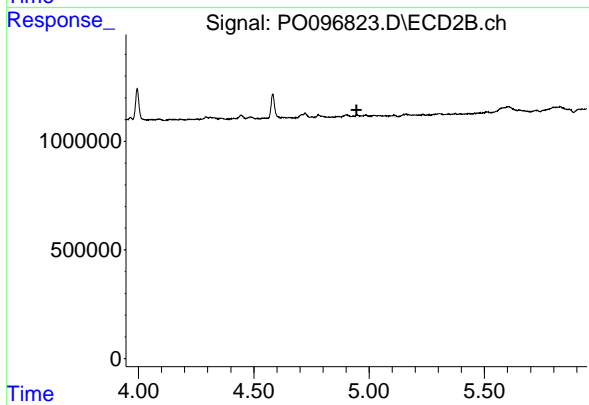
#5 AR-1016-3

R.T.: 0.000 min
 Exp R.T. : 4.903 min
 Response: 0
 Conc: N.D.



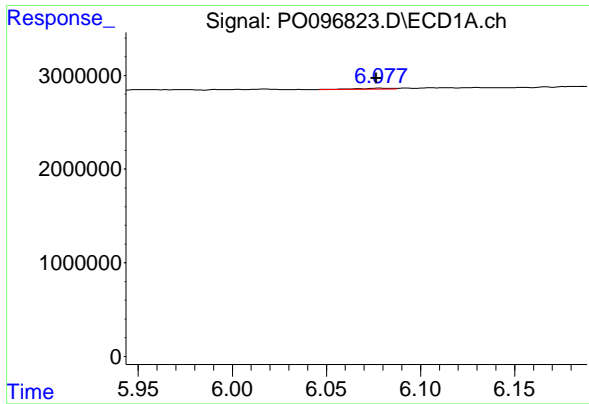
#6 AR-1016-4

R.T.: 5.779 min
 Delta R.T.: 0.002 min
 Response: 118469
 Conc: 1.76 ng/ml



#6 AR-1016-4

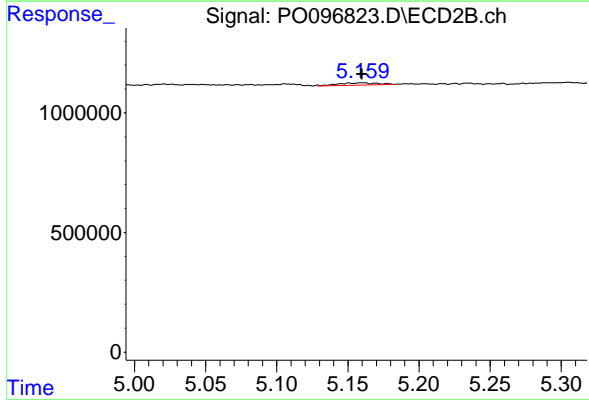
R.T.: 0.000 min
 Exp R.T. : 4.946 min
 Response: 0
 Conc: N.D.



#7 AR-1016-5

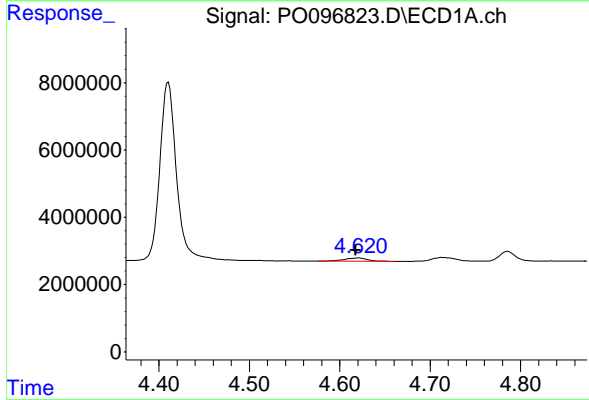
R.T.: 6.078 min
 Delta R.T.: 0.002 min
 Response: 100336
 Conc: 1.44 ng/ml

Instrument :
 ECD_O
 ClientSampleId :



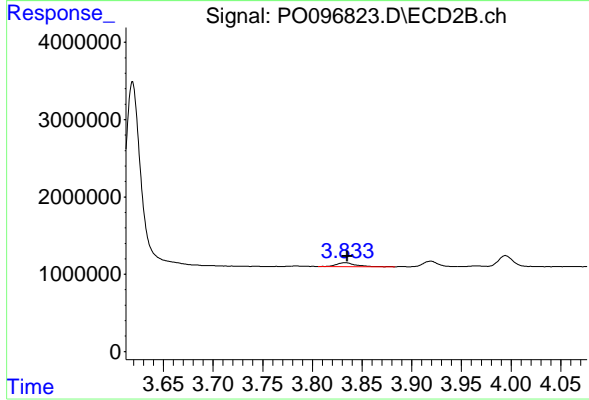
#7 AR-1016-5

R.T.: 5.160 min
 Delta R.T.: 0.000 min
 Response: 181160
 Conc: 4.71 ng/ml



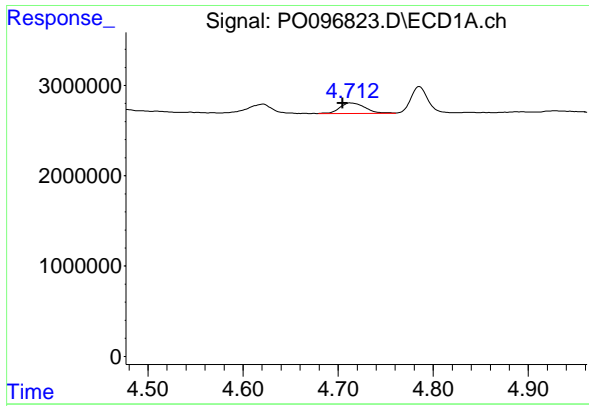
#8 AR-1221-1

R.T.: 4.621 min
 Delta R.T.: 0.003 min
 Response: 1780150
 Conc: 43.68 ng/ml



#8 AR-1221-1

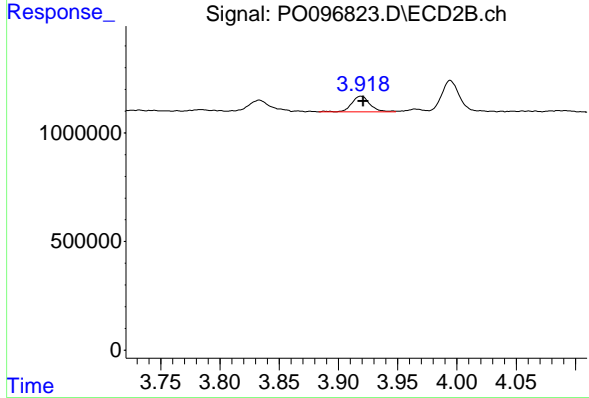
R.T.: 3.833 min
 Delta R.T.: -0.002 min
 Response: 692111
 Conc: 39.87 ng/ml



#9 AR-1221-2

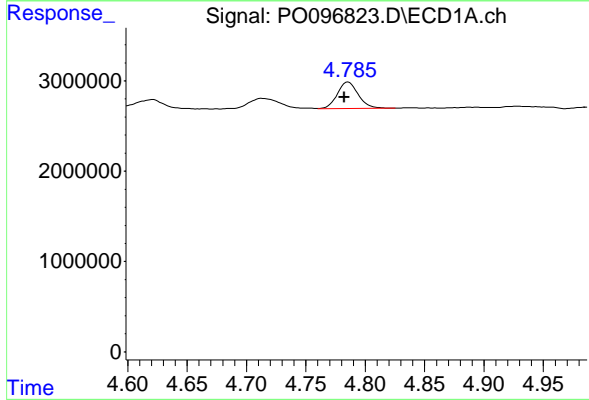
R.T.: 4.713 min
 Delta R.T.: 0.008 min
 Response: 2119699
 Conc: 69.77 ng/ml

Instrument :
 ECD_O
 ClientSampleId :



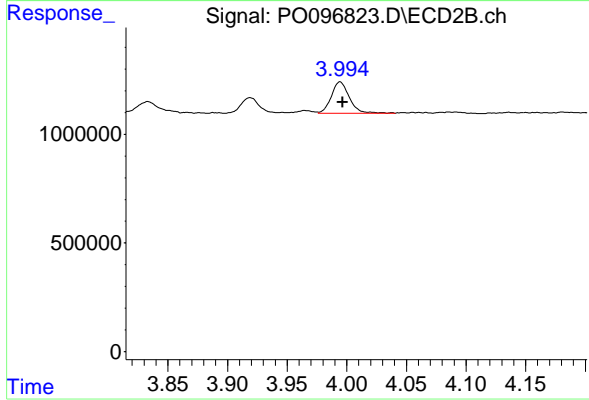
#9 AR-1221-2

R.T.: 3.919 min
 Delta R.T.: -0.002 min
 Response: 764348
 Conc: 59.16 ng/ml



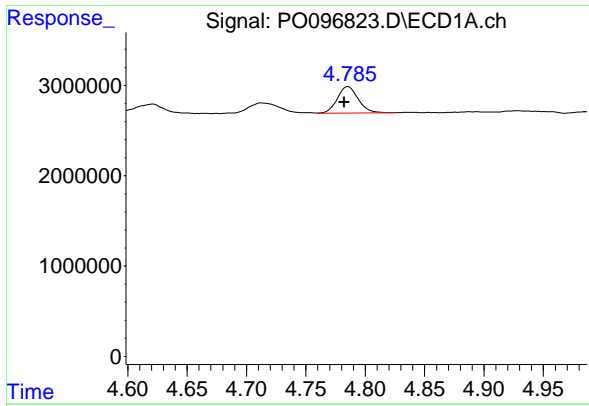
#10 AR-1221-3

R.T.: 4.786 min
 Delta R.T.: 0.003 min
 Response: 3579848
 Conc: 40.90 ng/ml



#10 AR-1221-3

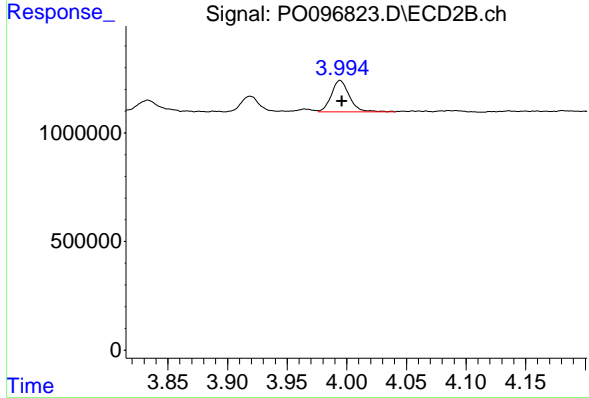
R.T.: 3.994 min
 Delta R.T.: -0.002 min
 Response: 1512786
 Conc: 38.11 ng/ml



#11 AR-1232-1

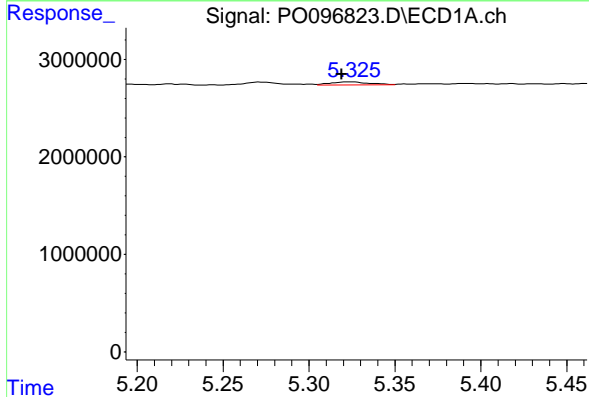
R.T.: 4.786 min
 Delta R.T.: 0.003 min
 Response: 3579848
 Conc: 49.08 ng/ml

Instrument :
 ECD_O
 ClientSampleId :



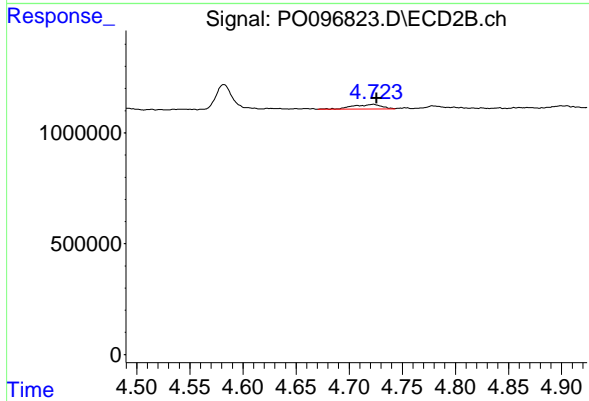
#11 AR-1232-1

R.T.: 3.994 min
 Delta R.T.: -0.002 min
 Response: 1512786
 Conc: 46.77 ng/ml



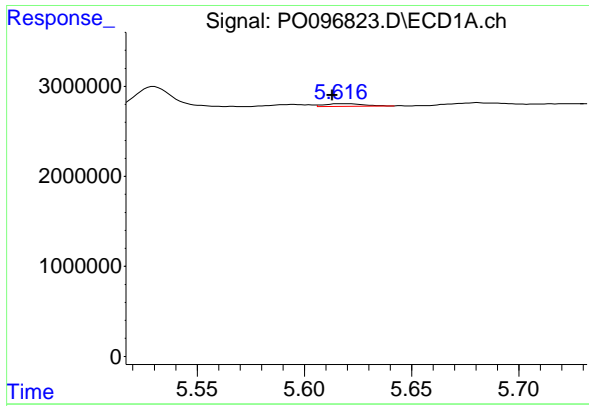
#12 AR-1232-2

R.T.: 5.323 min
 Delta R.T.: 0.004 min
 Response: 494716
 Conc: 12.48 ng/ml



#12 AR-1232-2

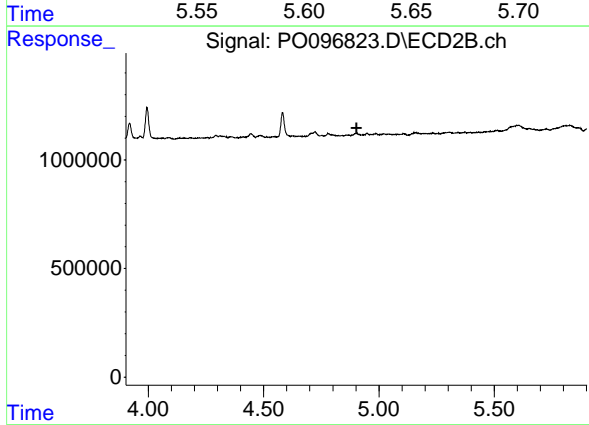
R.T.: 4.723 min
 Delta R.T.: -0.003 min
 Response: 385469
 Conc: 13.36 ng/ml



#13 AR-1232-3

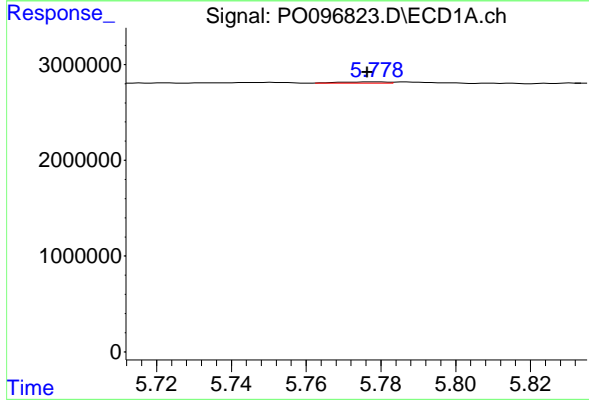
R.T.: 5.618 min
 Delta R.T.: 0.005 min
 Response: 352908
 Conc: 5.77 ng/ml

Instrument :
 ECD_O
 ClientSampleId :



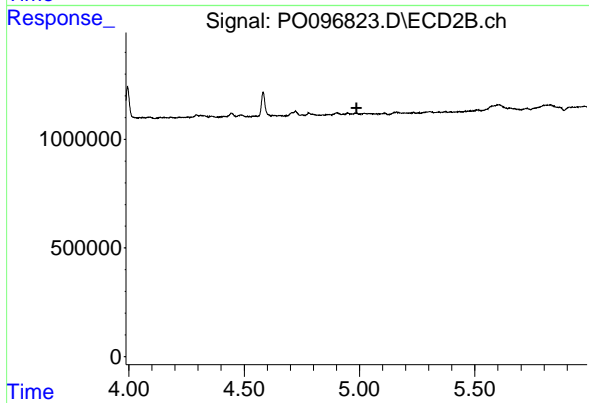
#13 AR-1232-3

R.T.: 0.000 min
 Exp R.T. : 4.902 min
 Response: 0
 Conc: N.D.



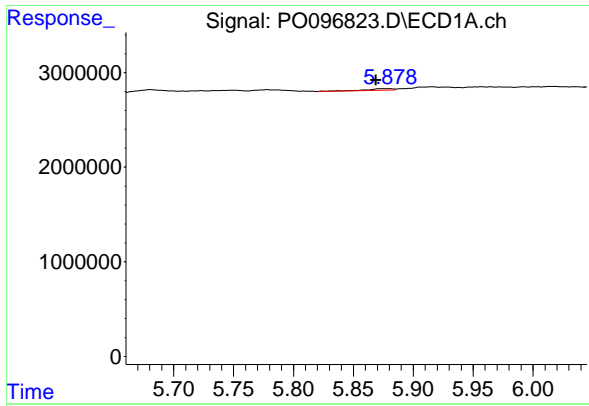
#14 AR-1232-4

R.T.: 5.779 min
 Delta R.T.: 0.002 min
 Response: 118469
 Conc: 3.88 ng/ml



#14 AR-1232-4

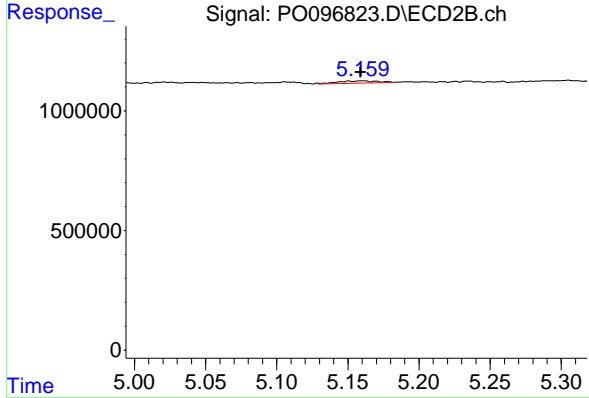
R.T.: 0.000 min
 Exp R.T. : 4.987 min
 Response: 0
 Conc: N.D.



#15 AR-1232-5

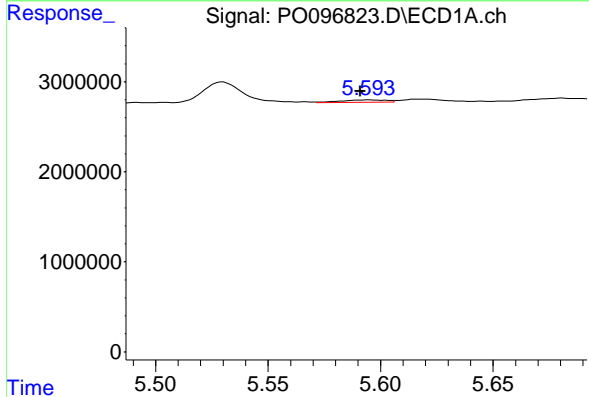
R.T.: 5.879 min
 Delta R.T.: 0.010 min
 Response: 256694
 Conc: 9.17 ng/ml

Instrument :
 ECD_O
 ClientSampleId :



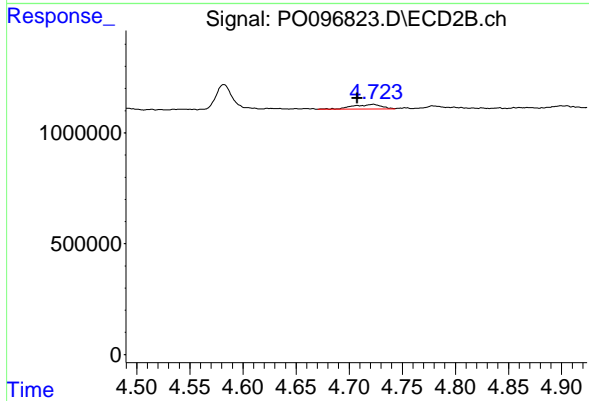
#15 AR-1232-5

R.T.: 5.160 min
 Delta R.T.: 0.000 min
 Response: 181160
 Conc: 11.08 ng/ml



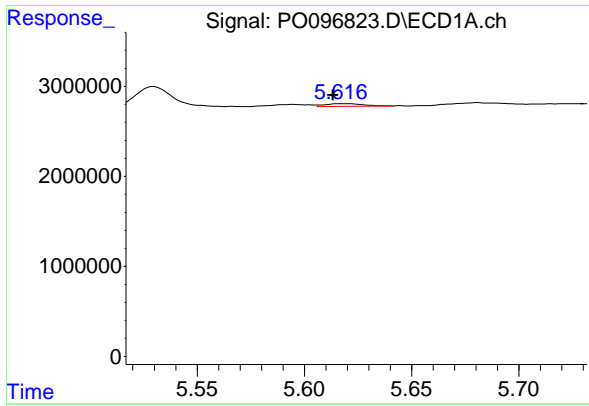
#16 AR-1242-1

R.T.: 5.594 min
 Delta R.T.: 0.003 min
 Response: 340217
 Conc: 4.06 ng/ml



#16 AR-1242-1

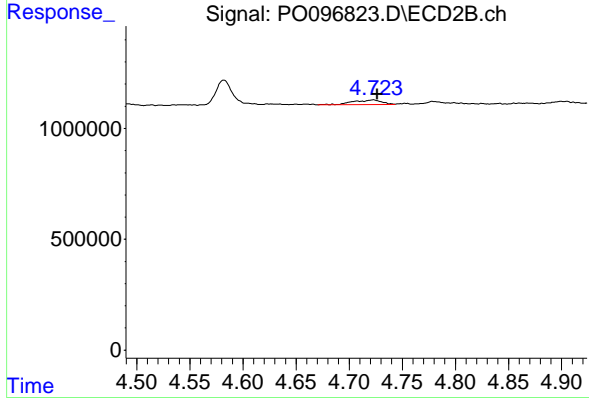
R.T.: 4.723 min
 Delta R.T.: 0.015 min
 Response: 385469
 Conc: 9.78 ng/ml



#17 AR-1242-2

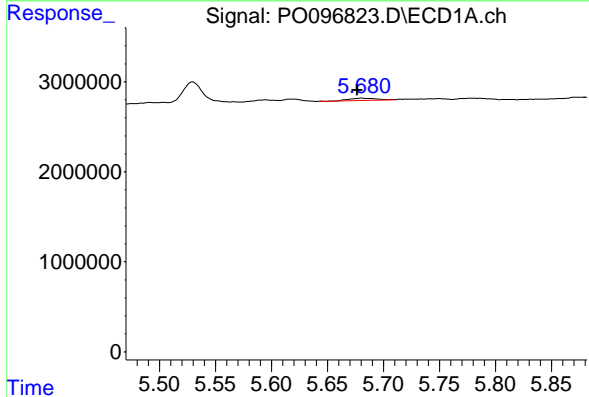
R.T.: 5.618 min
 Delta R.T.: 0.004 min
 Response: 352908
 Conc: 3.00 ng/ml

Instrument :
 ECD_O
 ClientSampleId :



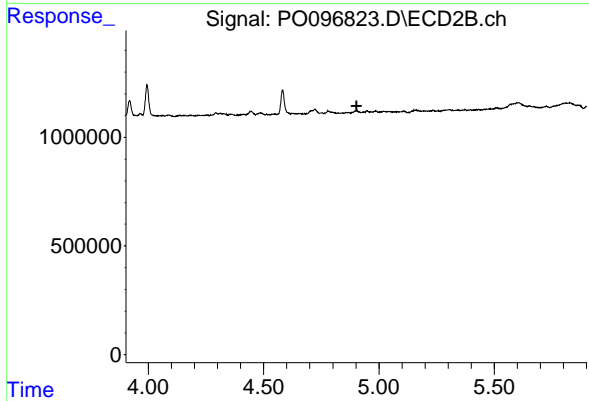
#17 AR-1242-2

R.T.: 4.723 min
 Delta R.T.: -0.004 min
 Response: 385469
 Conc: 7.07 ng/ml



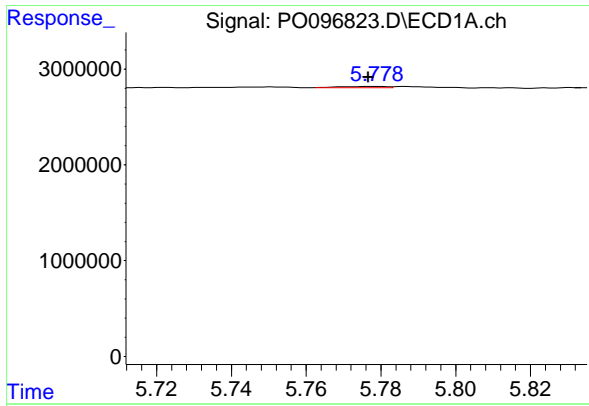
#18 AR-1242-3

R.T.: 5.681 min
 Delta R.T.: 0.004 min
 Response: 393924
 Conc: 5.33 ng/ml



#18 AR-1242-3

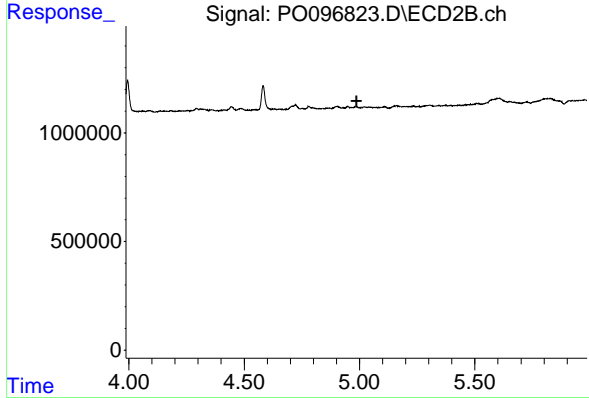
R.T.: 0.000 min
 Exp R.T. : 4.903 min
 Response: 0
 Conc: N.D.



#19 AR-1242-4

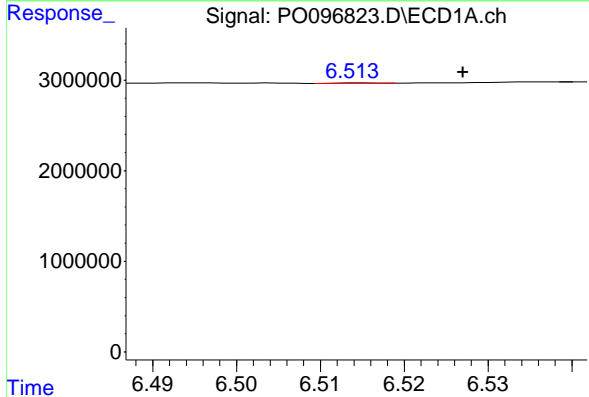
R.T.: 5.779 min
 Delta R.T.: 0.002 min
 Response: 118469
 Conc: 1.99 ng/ml

Instrument :
 ECD_O
 ClientSampleId :



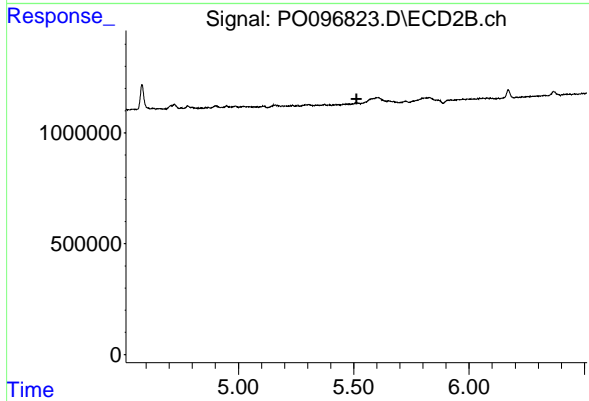
#19 AR-1242-4

R.T.: 0.000 min
 Exp R.T. : 4.987 min
 Response: 0
 Conc: N.D.



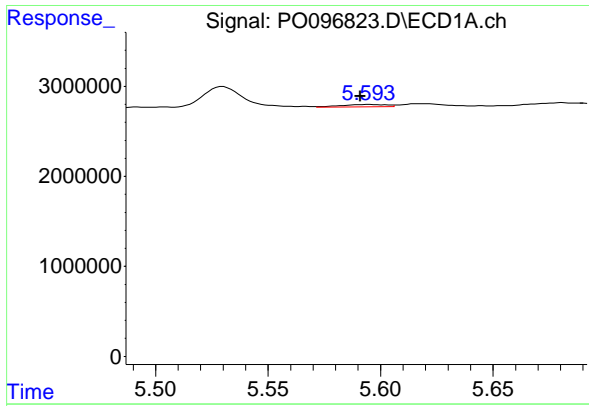
#20 AR-1242-5

R.T.: 6.515 min
 Delta R.T.: -0.012 min
 Response: 17906
 Conc: 0.33 ng/ml



#20 AR-1242-5

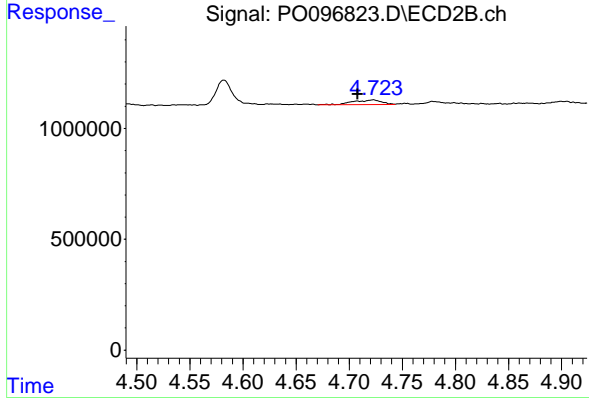
R.T.: 0.000 min
 Exp R.T. : 5.512 min
 Response: 0
 Conc: N.D.



#21 AR-1248-1

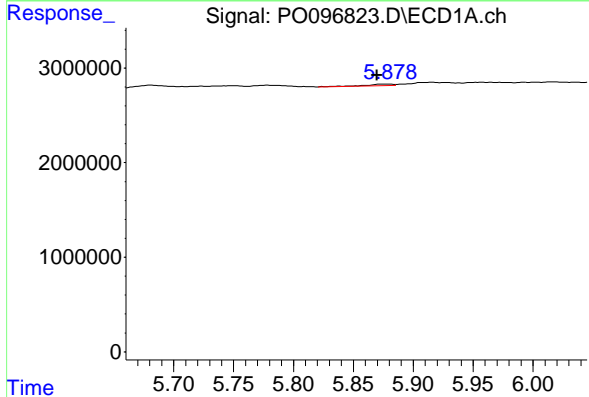
R.T.: 5.594 min
 Delta R.T.: 0.003 min
 Response: 340217
 Conc: 5.81 ng/ml

Instrument :
 ECD_O
 ClientSampleId :



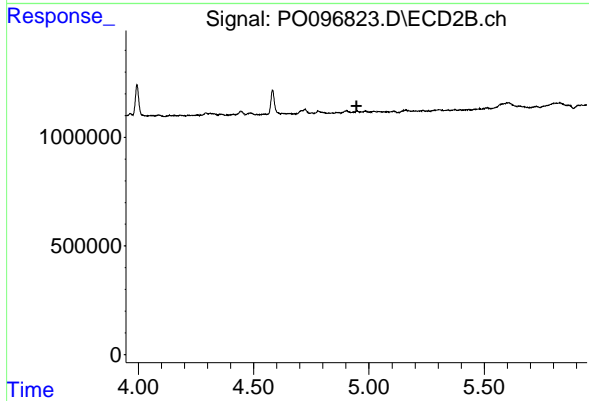
#21 AR-1248-1

R.T.: 4.723 min
 Delta R.T.: 0.015 min
 Response: 385469
 Conc: 13.74 ng/ml



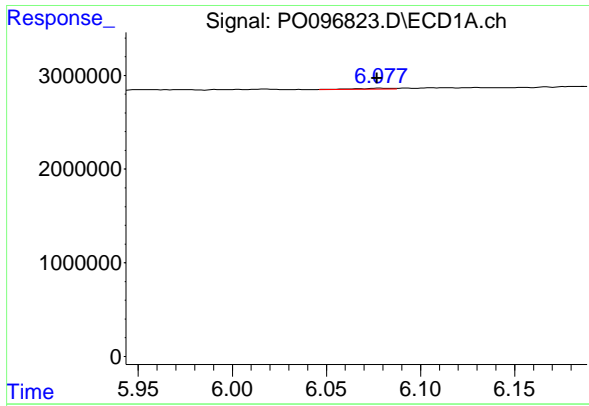
#22 AR-1248-2

R.T.: 5.879 min
 Delta R.T.: 0.009 min
 Response: 256694
 Conc: 2.73 ng/ml



#22 AR-1248-2

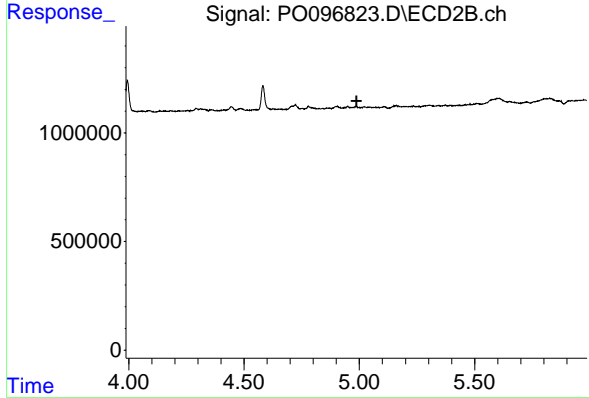
R.T.: 0.000 min
 Exp R.T. : 4.946 min
 Response: 0
 Conc: N.D.



#23 AR-1248-3

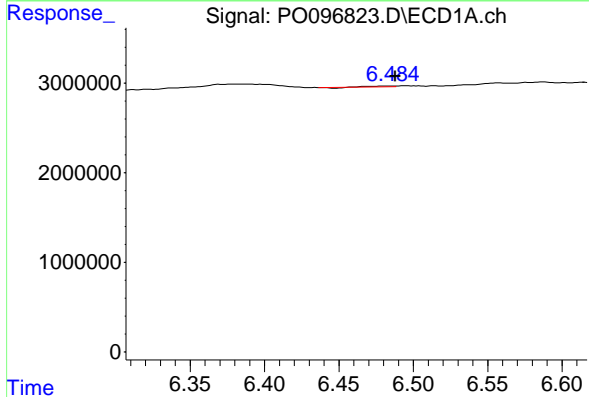
R.T.: 6.078 min
 Delta R.T.: 0.001 min
 Response: 100336
 Conc: 1.03 ng/ml

Instrument :
 ECD_O
 ClientSampleId :



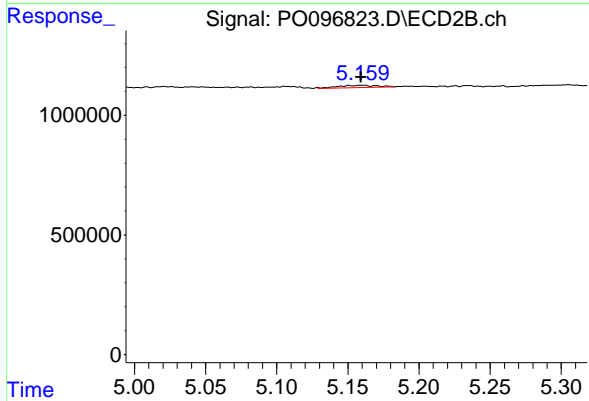
#23 AR-1248-3

R.T.: 0.000 min
 Exp R.T. : 4.987 min
 Response: 0
 Conc: N.D.



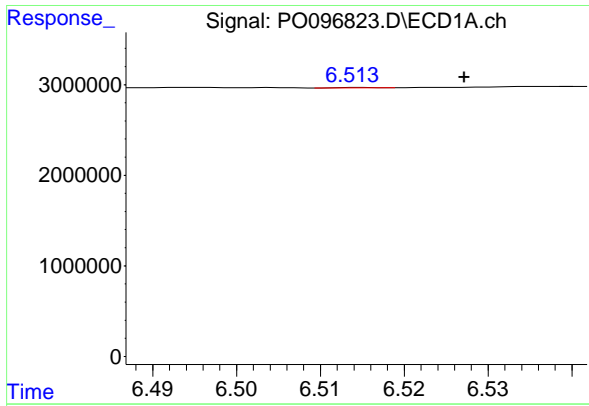
#24 AR-1248-4

R.T.: 6.484 min
 Delta R.T.: -0.003 min
 Response: 57280
 Conc: 0.63 ng/ml



#24 AR-1248-4

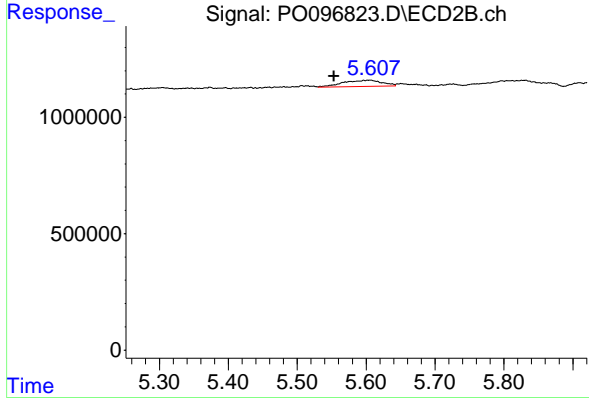
R.T.: 5.160 min
 Delta R.T.: 0.000 min
 Response: 181160
 Conc: 3.55 ng/ml



#25 AR-1248-5

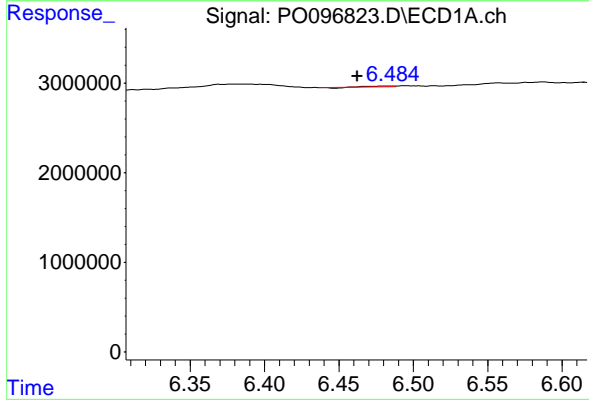
R.T.: 6.515 min
 Delta R.T.: -0.013 min
 Response: 17906
 Conc: 0.20 ng/ml

Instrument :
 ECD_O
 ClientSampleId :



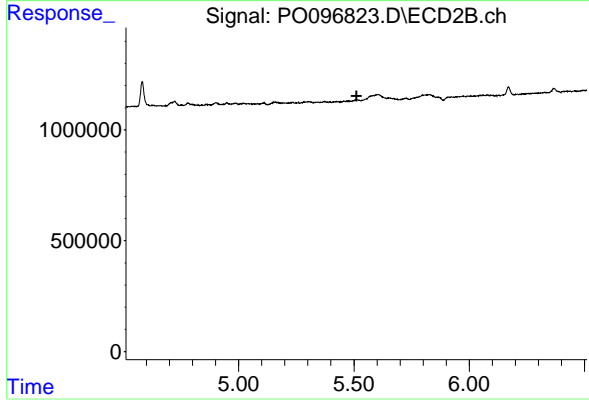
#25 AR-1248-5

R.T.: 5.597 min
 Delta R.T.: 0.043 min
 Response: 1070559
 Conc: 22.90 ng/ml



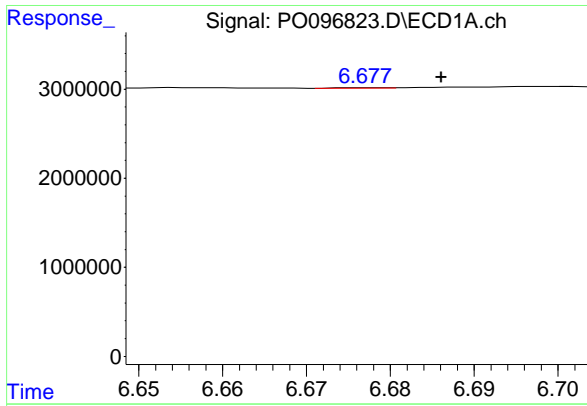
#26 AR-1254-1

R.T.: 6.484 min
 Delta R.T.: 0.022 min
 Response: 57280
 Conc: 0.52 ng/ml



#26 AR-1254-1

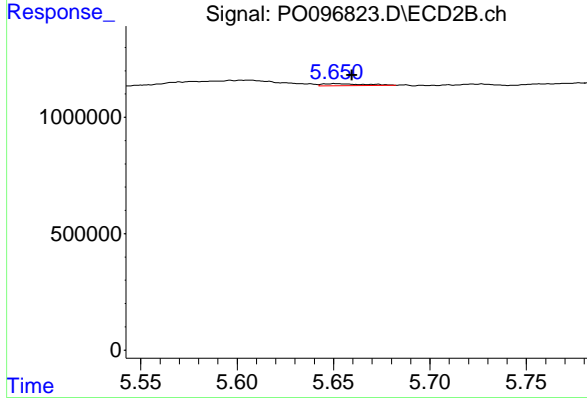
R.T.: 0.000 min
 Exp R.T. : 5.511 min
 Response: 0
 Conc: N.D.



#27 AR-1254-2

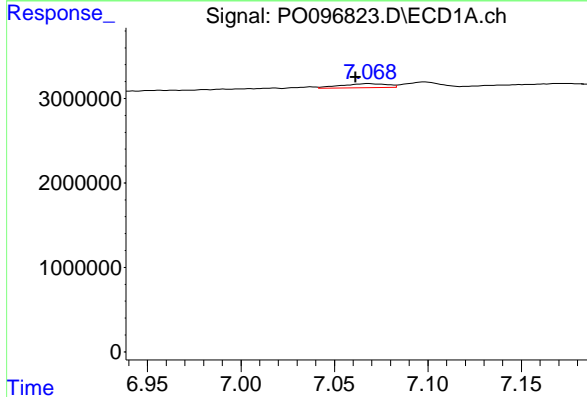
R.T.: 6.677 min
 Delta R.T.: -0.009 min
 Response: 20053
 Conc: 0.12 ng/ml

Instrument :
 ECD_O
 ClientSampleId :



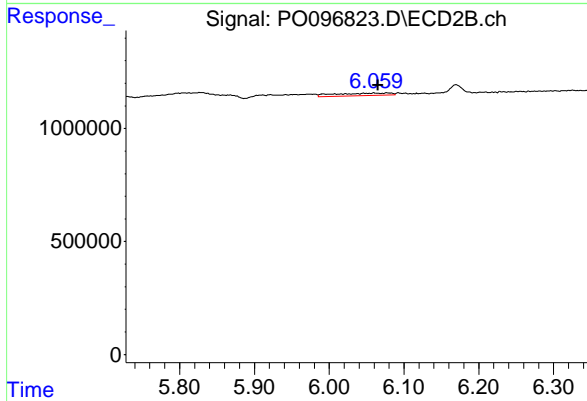
#27 AR-1254-2

R.T.: 5.651 min
 Delta R.T.: -0.009 min
 Response: 136162
 Conc: 2.07 ng/ml



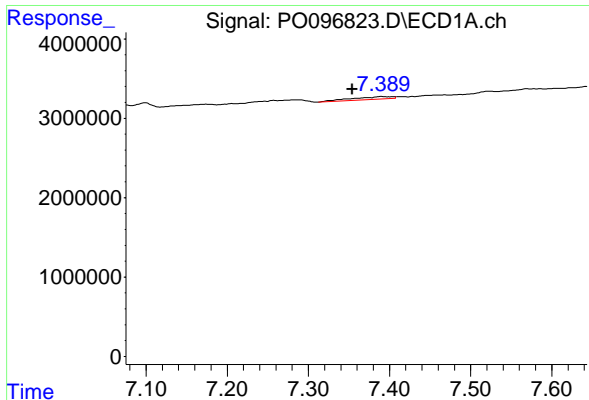
#28 AR-1254-3

R.T.: 7.068 min
 Delta R.T.: 0.007 min
 Response: 817902
 Conc: 5.22 ng/ml



#28 AR-1254-3

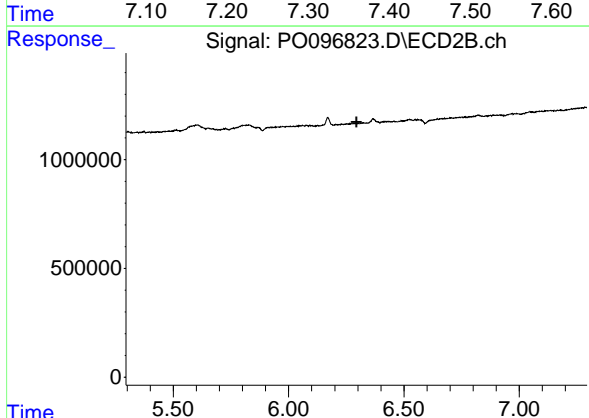
R.T.: 6.060 min
 Delta R.T.: -0.005 min
 Response: 558559
 Conc: 5.53 ng/ml



#29 AR-1254-4

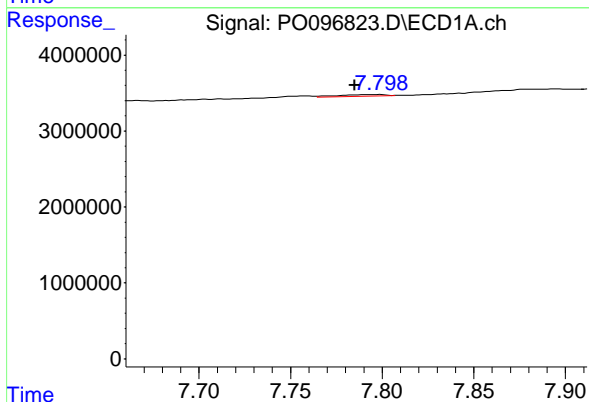
R.T.: 7.390 min
 Delta R.T.: 0.036 min
 Response: 1112791
 Conc: 11.04 ng/ml

Instrument :
 ECD_O
 ClientSampleId :



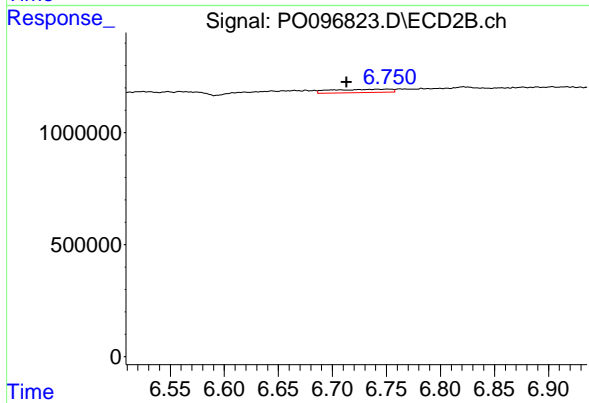
#29 AR-1254-4

R.T.: 0.000 min
 Exp R.T. : 6.294 min
 Response: 0
 Conc: N.D.



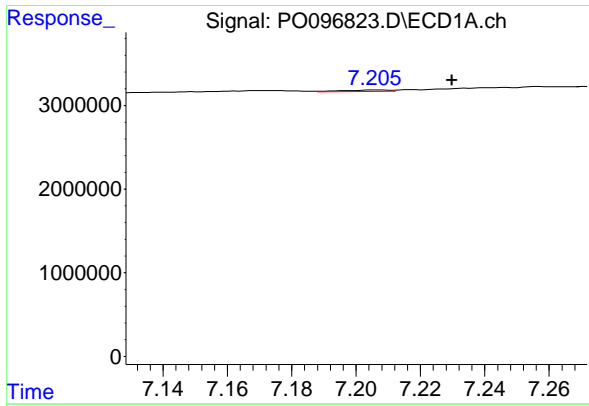
#30 AR-1254-5

R.T.: 7.798 min
 Delta R.T.: 0.013 min
 Response: 394482
 Conc: 3.52 ng/ml



#30 AR-1254-5

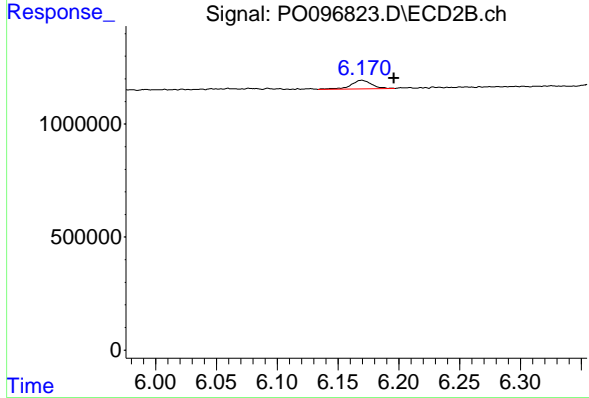
R.T.: 6.751 min
 Delta R.T.: 0.038 min
 Response: 563640
 Conc: 6.41 ng/ml



#31 AR-1260-1

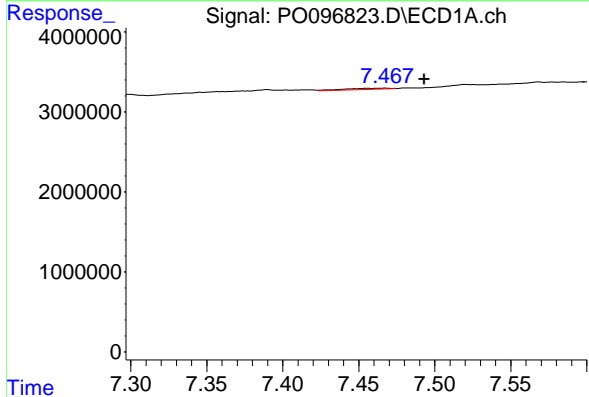
R.T.: 7.206 min
 Delta R.T.: -0.024 min
 Response: 168450
 Conc: 1.34 ng/ml

Instrument :
 ECD_O
 ClientSampleId :



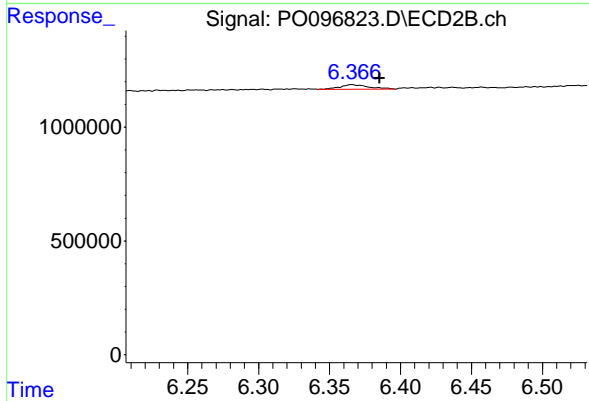
#31 AR-1260-1

R.T.: 6.170 min
 Delta R.T.: -0.026 min
 Response: 457456
 Conc: 6.50 ng/ml



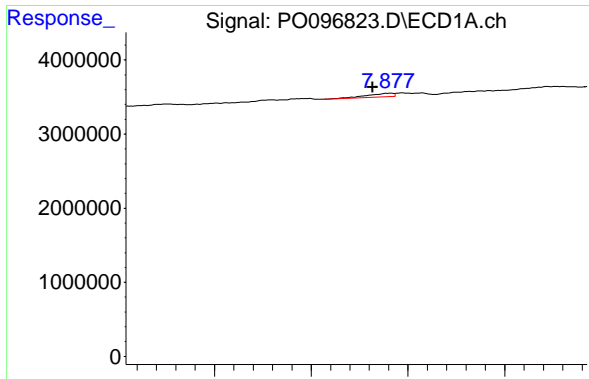
#32 AR-1260-2

R.T.: 7.468 min
 Delta R.T.: -0.025 min
 Response: 299102
 Conc: 2.22 ng/ml



#32 AR-1260-2

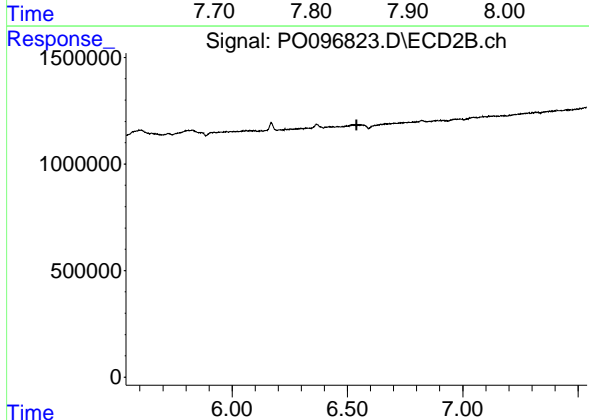
R.T.: 6.366 min
 Delta R.T.: -0.020 min
 Response: 302779
 Conc: 3.63 ng/ml



#33 AR-1260-3

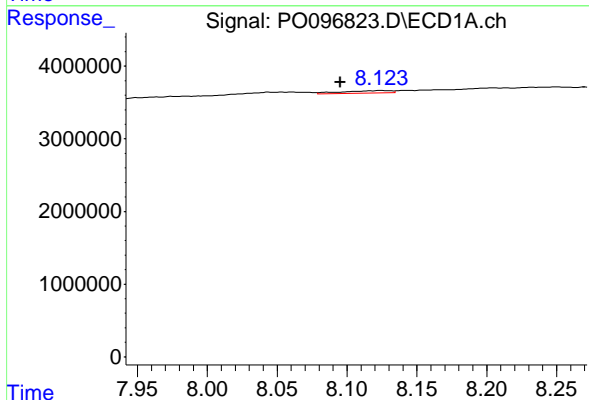
R.T.: 7.882 min
 Delta R.T.: 0.018 min
 Response: 864993
 Conc: 8.34 ng/ml

Instrument :
 ECD_O
 ClientSampleId :



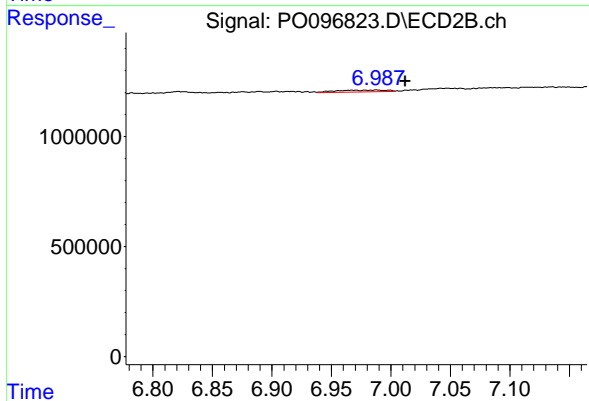
#33 AR-1260-3

R.T.: 0.000 min
 Exp R.T. : 6.539 min
 Response: 0
 Conc: N.D.



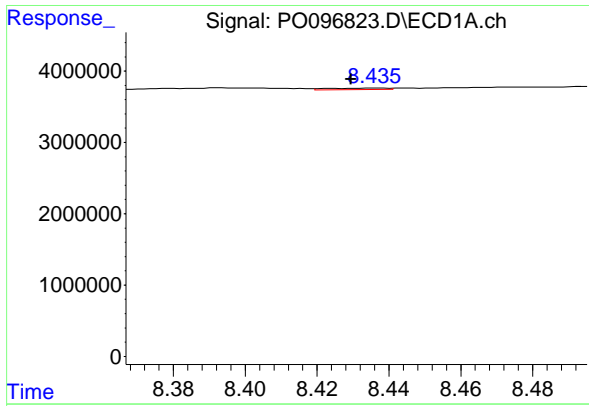
#34 AR-1260-4

R.T.: 8.124 min
 Delta R.T.: 0.028 min
 Response: 770634
 Conc: 6.89 ng/ml



#34 AR-1260-4

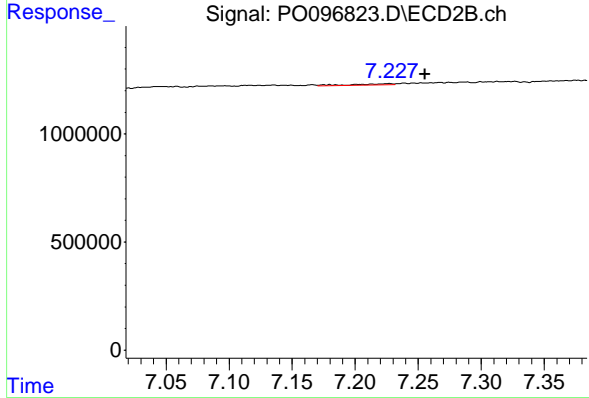
R.T.: 6.988 min
 Delta R.T.: -0.024 min
 Response: 236201
 Conc: 3.69 ng/ml



#35 AR-1260-5

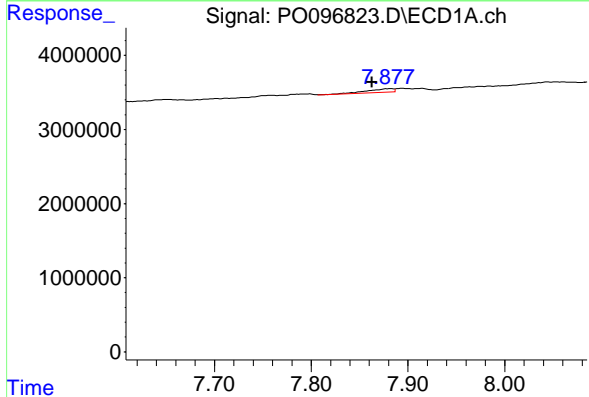
R.T.: 8.437 min
 Delta R.T.: 0.008 min
 Response: 258218
 Conc: 1.23 ng/ml

Instrument :
 ECD_O
 ClientSampleId :



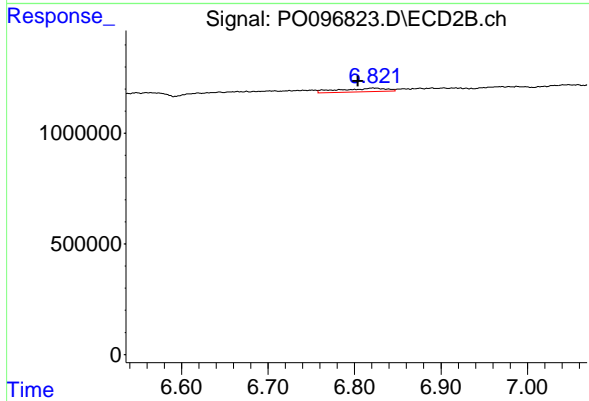
#35 AR-1260-5

R.T.: 7.227 min
 Delta R.T.: -0.029 min
 Response: 144562
 Conc: 1.04 ng/ml



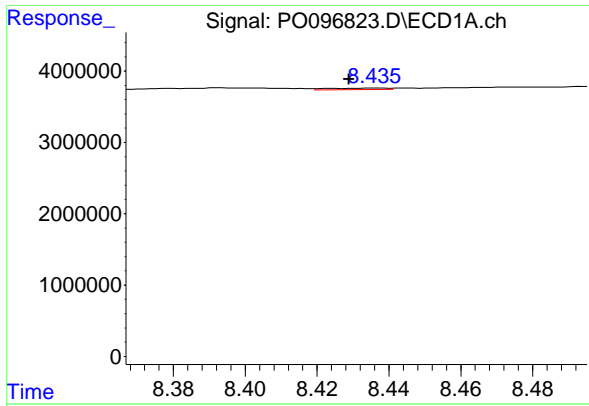
#36 AR-1262-1

R.T.: 7.882 min
 Delta R.T.: 0.019 min
 Response: 864993
 Conc: 5.82 ng/ml



#36 AR-1262-1

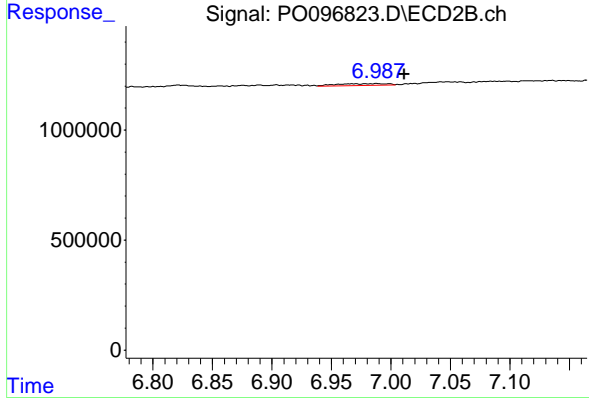
R.T.: 6.821 min
 Delta R.T.: 0.017 min
 Response: 633496
 Conc: 16.09 ng/ml



#37 AR-1262-2

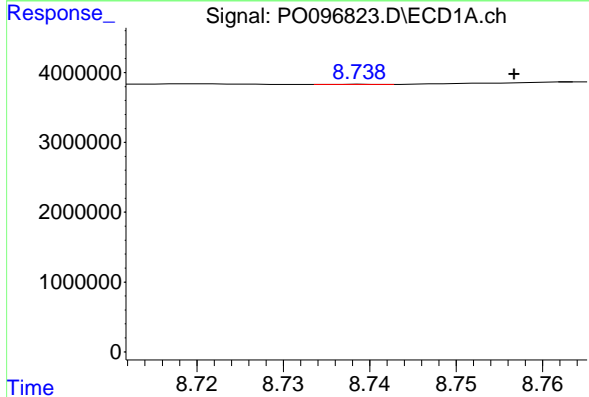
R.T.: 8.437 min
 Delta R.T.: 0.008 min
 Response: 258218
 Conc: 1.12 ng/ml

Instrument :
 ECD_O
 ClientSampleId :



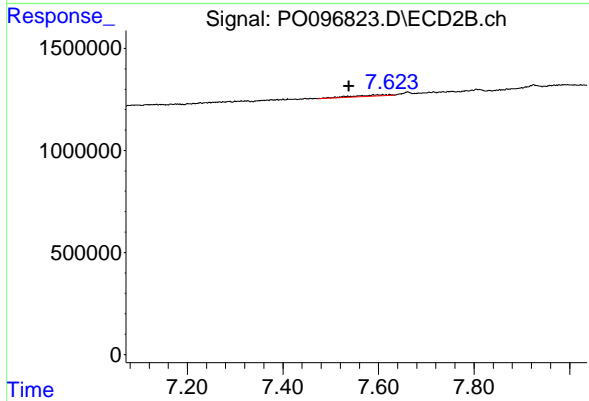
#37 AR-1262-2

R.T.: 6.988 min
 Delta R.T.: -0.023 min
 Response: 236201
 Conc: 2.91 ng/ml



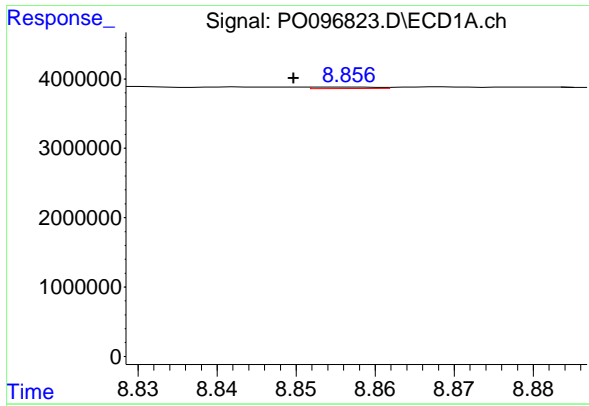
#38 AR-1262-3

R.T.: 8.739 min
 Delta R.T.: -0.017 min
 Response: 10031
 Conc: 0.06 ng/ml



#38 AR-1262-3

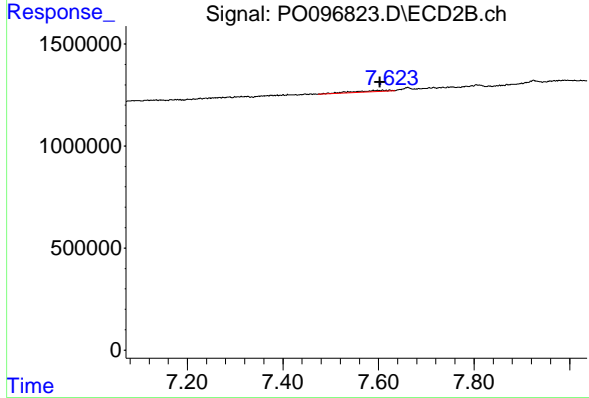
R.T.: 7.589 min
 Delta R.T.: 0.050 min
 Response: 335380
 Conc: 5.23 ng/ml



#39 AR-1262-4

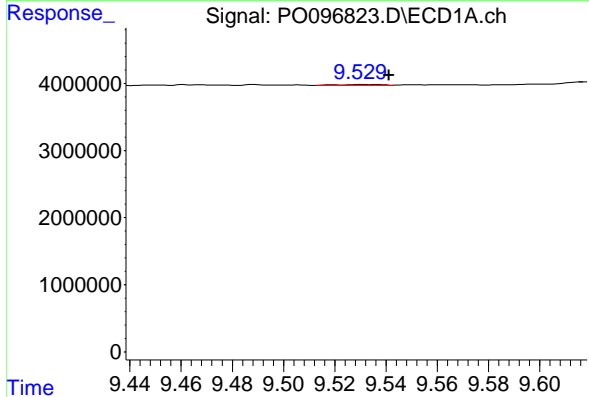
R.T.: 8.856 min
 Delta R.T.: 0.007 min
 Response: 123541
 Conc: 1.69 ng/ml

Instrument :
 ECD_O
 ClientSampleId :



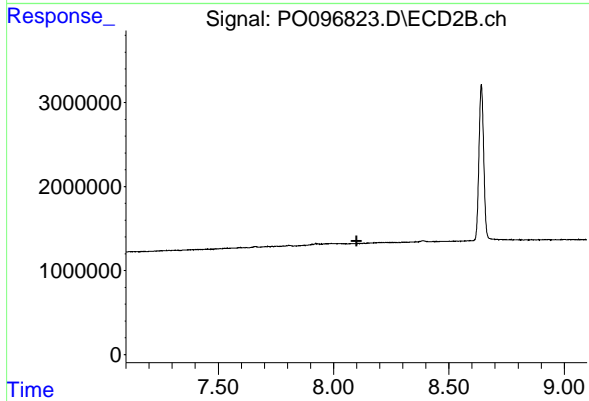
#39 AR-1262-4

R.T.: 7.589 min
 Delta R.T.: -0.014 min
 Response: 335380
 Conc: 2.95 ng/ml



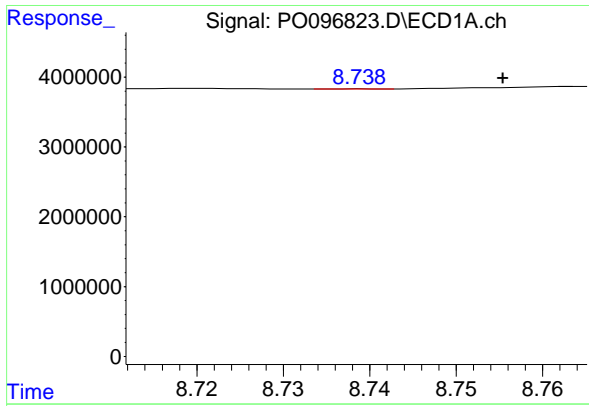
#40 AR-1262-5

R.T.: 9.530 min
 Delta R.T.: -0.011 min
 Response: 181692
 Conc: 2.18 ng/ml



#40 AR-1262-5

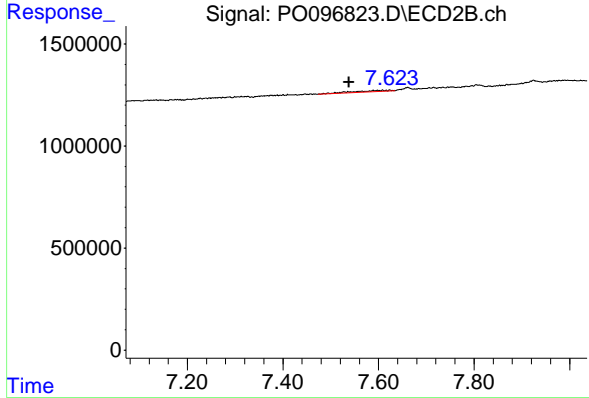
R.T.: 0.000 min
 Exp R.T. : 8.099 min
 Response: 0
 Conc: N.D.



#41 AR-1268-1

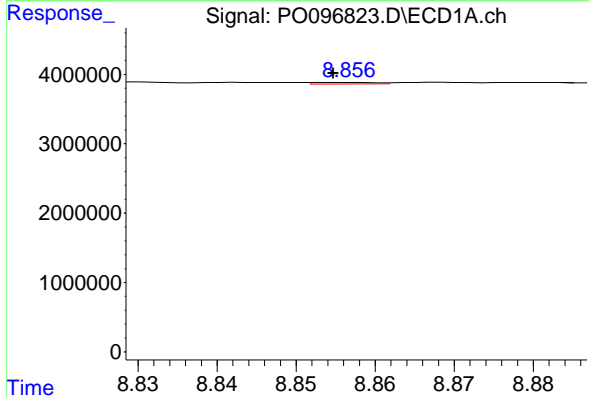
R.T.: 8.739 min
 Delta R.T.: -0.016 min
 Response: 10031
 Conc: 0.03 ng/ml

Instrument :
 ECD_O
 ClientSampleId :



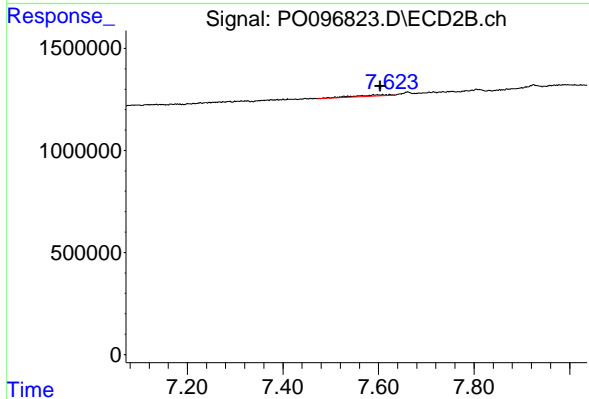
#41 AR-1268-1

R.T.: 7.589 min
 Delta R.T.: 0.051 min
 Response: 335380
 Conc: 1.81 ng/ml



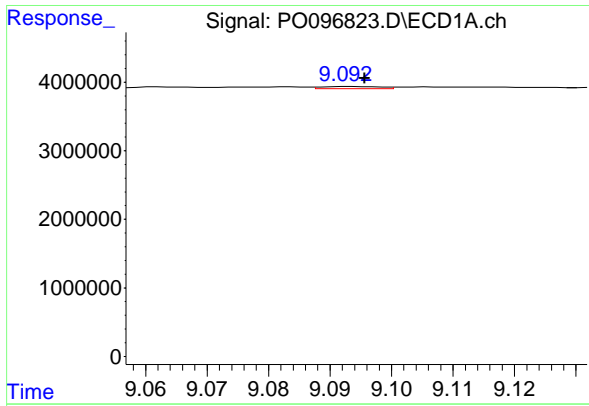
#42 AR-1268-2

R.T.: 8.856 min
 Delta R.T.: 0.002 min
 Response: 123541
 Conc: 0.45 ng/ml



#42 AR-1268-2

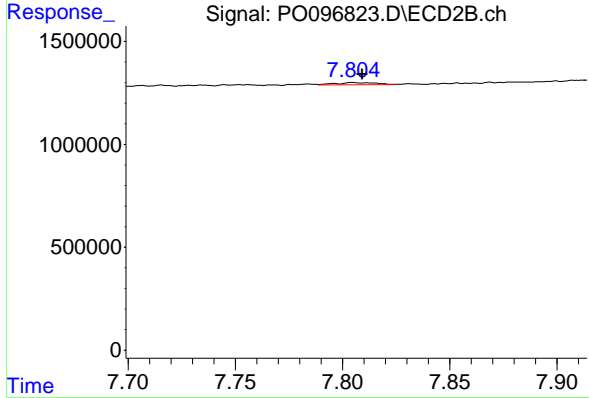
R.T.: 7.589 min
 Delta R.T.: -0.015 min
 Response: 335380
 Conc: 2.00 ng/ml



#43 AR-1268-3

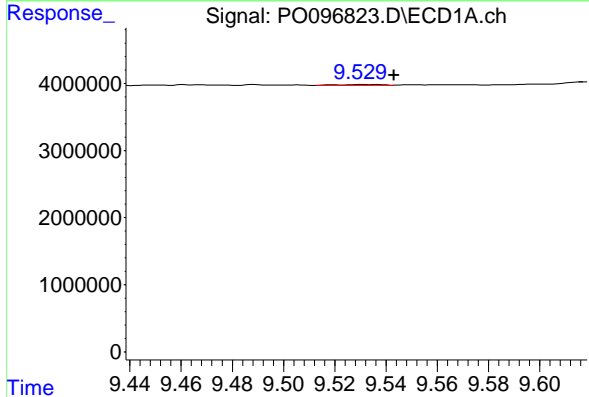
R.T.: 9.093 min
 Delta R.T.: -0.002 min
 Response: 212551
 Conc: 0.83 ng/ml

Instrument : ECD_O
 ClientSampleId :



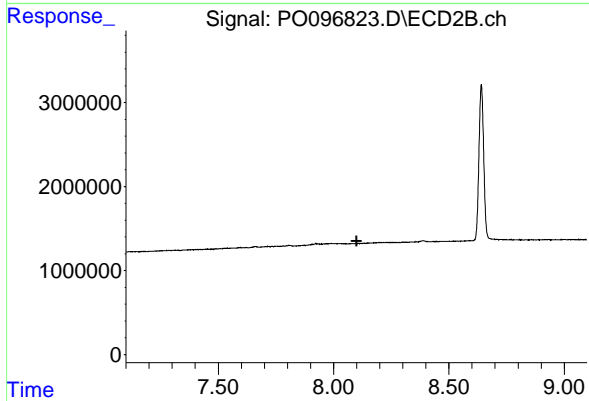
#43 AR-1268-3

R.T.: 7.805 min
 Delta R.T.: -0.004 min
 Response: 147966
 Conc: 1.02 ng/ml



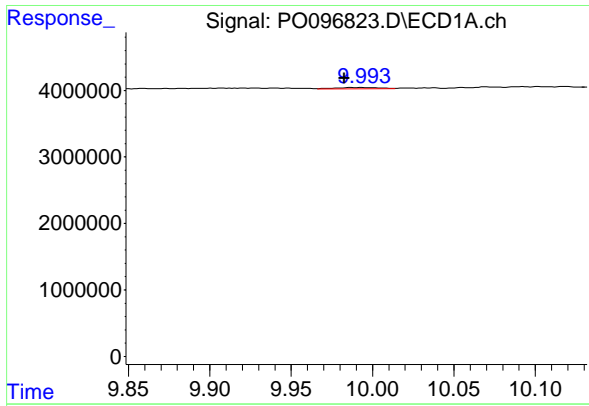
#44 AR-1268-4

R.T.: 9.530 min
 Delta R.T.: -0.013 min
 Response: 181692
 Conc: 1.96 ng/ml



#44 AR-1268-4

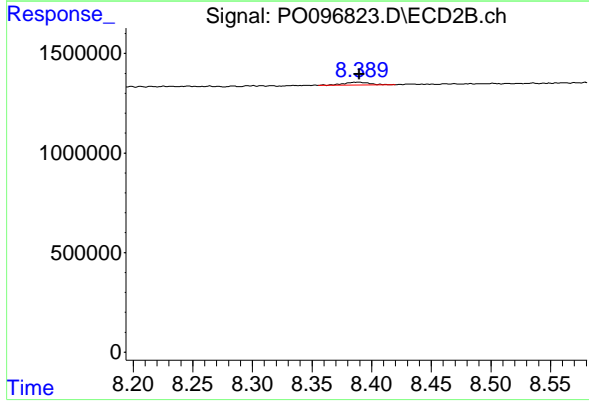
R.T.: 0.000 min
 Exp R.T. : 8.100 min
 Response: 0
 Conc: N.D.



#45 AR-1268-5

R.T.: 9.994 min
 Delta R.T.: 0.011 min
 Response: 360581
 Conc: 0.45 ng/ml

Instrument :
 ECD_O
 ClientSampleId :



#45 AR-1268-5

R.T.: 8.389 min
 Delta R.T.: 0.000 min
 Response: 203217
 Conc: 0.49 ng/ml