

Data Path : Z:\pestpcbsrv\HPCHEM1\ECD\_O\Data\P0080923\  
 Data File : P0096844.D  
 Signal(s) : Signal #1: ECD1A.ch Signal #2: ECD2B.ch  
 Acq On : 09 Aug 2023 15:34  
 Operator : YP/AJ  
 Sample : AR1660CCC500  
 Misc :  
 ALS Vial : 3 Sample Multiplier: 1

Instrument :  
 ECD\_O  
 ClientSampleId :  
 AR1660CCC500

Integration File signal 1: autoint1.e  
 Integration File signal 2: autoint2.e  
 Quant Time: Aug 10 01:30:12 2023  
 Quant Method : Z:\pestpcbsrv\HPCHEM1\ECD\_O\methods\P0080723.M  
 Quant Title : GC EXTRACTABLES  
 QLast Update : Tue Aug 08 04:34:41 2023  
 Response via : Initial Calibration  
 Integrator: ChemStation

Volume Inj. : 2 µl  
 Signal #1 Phase : ZB-MR2 Signal #2 Phase: ZB-MR2  
 Signal #1 Info : 30Mx0.32mmx 0.50µ Signal #2 Info : 30M x 0.32mm x 0.25µm

| Compound                    | RT#1   | RT#2  | Resp#1   | Resp#2   | ng/ml    | ng/ml     |
|-----------------------------|--------|-------|----------|----------|----------|-----------|
| -----                       |        |       |          |          |          |           |
| System Monitoring Compounds |        |       |          |          |          |           |
| 1) SA Tetrachlo...          | 4.411  | 3.619 | 178.5E6  | 72814971 | 53.931   | 55.005    |
| 2) SA Decachlor...          | 10.357 | 8.642 | 118.6E6  | 62402811 | 54.187   | 53.938    |
| Target Compounds            |        |       |          |          |          |           |
| 3) L1 AR-1016-1             | 5.597  | 4.706 | 49600294 | 23407255 | 526.634  | 527.951   |
| 4) L1 AR-1016-2             | 5.619  | 4.724 | 70749285 | 32568594 | 528.870  | 532.421   |
| 5) L1 AR-1016-3             | 5.683  | 4.901 | 44390823 | 18180076 | 510.116  | 556.503   |
| 6) L1 AR-1016-4             | 5.783  | 4.944 | 35812397 | 15098802 | 533.158  | 528.182   |
| 7) L1 AR-1016-5             | 6.084  | 5.157 | 38177603 | 22155701 | 546.824  | 576.274   |
| 8) L2 AR-1221-1             | 4.618  | 3.831 | 6725299  | 2641153  | 165.017  | 152.166   |
| 9) L2 AR-1221-2             | 4.710  | 3.919 | 9311022  | 3678361  | 306.487  | 284.687   |
| 10) L2 AR-1221-3            | 4.787  | 3.994 | 31394914 | 13966937 | 358.669  | 351.865   |
| 11) L3 AR-1232-1            | 4.787  | 3.994 | 31394914 | 13966937 | 430.460  | 431.783   |
| 12) L3 AR-1232-2            | 5.325  | 4.724 | 43704588 | 32568594 | 1102.373 | 1128.794  |
| 13) L3 AR-1232-3            | 5.619  | 4.901 | 70749285 | 18180076 | 1156.551 | 1199.066  |
| 14) L3 AR-1232-4            | 5.783  | 4.985 | 35812397 | 19868370 | 1173.645 | 1329.463  |
| 15) L3 AR-1232-5            | 5.877  | 5.157 | 34300576 | 22155701 | 1225.757 | 1355.356  |
| 16) L4 AR-1242-1            | 5.597  | 4.706 | 49600294 | 23407255 | 591.769  | 593.717   |
| 17) L4 AR-1242-2            | 5.619  | 4.724 | 70749285 | 32568594 | 600.783  | 597.689   |
| 18) L4 AR-1242-3            | 5.683  | 4.901 | 44390823 | 18180076 | 600.912  | 614.844   |
| 19) L4 AR-1242-4            | 5.783  | 4.985 | 35812397 | 19868370 | 601.582  | 630.464   |
| 20) L4 AR-1242-5            | 6.537  | 5.510 | 9147698  | 19828543 | 166.262  | 544.199 # |
| 21) L5 AR-1248-1            | 5.597  | 4.706 | 49600294 | 23407255 | 846.507  | 834.111   |
| 22) L5 AR-1248-2            | 5.877  | 4.944 | 34300576 | 15098802 | 364.831  | 356.264   |
| 23) L5 AR-1248-3            | 6.084  | 4.985 | 38177603 | 19868370 | 390.329  | 452.943   |
| 24) L5 AR-1248-4            | 6.497  | 5.157 | 10815977 | 22155701 | 119.062  | 434.001 # |
| 25) L5 AR-1248-5            | 6.537  | 5.551 | 9147698  | 5440952  | 103.850  | 116.379   |
| 26) L6 AR-1254-1            | 6.471  | 5.510 | 30595173 | 19828543 | 279.943  | 268.693   |
| 27) L6 AR-1254-2            | 6.695  | 5.658 | 27278262 | 14429204 | 169.191  | 219.022 # |
| 28) L6 AR-1254-3            | 7.072  | 6.078 | 13863279 | 26146138 | 88.472   | 258.712 # |
| 29) L6 AR-1254-4            | 7.366  | 6.293 | 10774185 | 2004879  | 106.868  | 34.642 #  |
| 30) L6 AR-1254-5            | 7.795  | 6.711 | 77961264 | 45300999 | 694.753  | 515.281 # |
| 31) L7 AR-1260-1            | 7.241  | 6.194 | 69363065 | 37912513 | 551.867  | 538.774   |
| 32) L7 AR-1260-2            | 7.505  | 6.384 | 73037820 | 44002180 | 542.085  | 527.205   |
| 33) L7 AR-1260-3            | 7.875  | 6.537 | 56384799 | 40762897 | 543.342  | 527.883   |
| 34) L7 AR-1260-4            | 8.107  | 7.010 | 61153112 | 34005028 | 546.969  | 530.647   |
| 35) L7 AR-1260-5            | 8.441  | 7.254 | 111.2E6  | 73262025 | 529.789  | 528.456   |
| 36) L8 AR-1262-1            | 7.875  | 6.804 | 56384799 | 18732376 | 379.627  | 475.819 # |
| 37) L8 AR-1262-2            | 8.441  | 7.010 | 111.2E6  | 34005028 | 480.607  | 419.271   |
| 38) L8 AR-1262-3            | 8.783  | 7.538 | 72146573 | 18019174 | 432.537  | 280.790 # |
| 39) L8 AR-1262-4            | 8.844  | 7.601 | 26815574 | 53629095 | 367.805  | 472.085 # |
| 40) L8 AR-1262-5            | 9.556  | 8.099 | 29407400 | 19049758 | 353.123  | 362.729   |
| 41) L9 AR-1268-1            | 8.783  | 7.538 | 72146573 | 18019174 | 234.696  | 97.249 #  |

Data Path : Z:\pestpcbsrv\HPCHEM1\ECD\_O\Data\P0080923\  
 Data File : P0096844.D  
 Signal(s) : Signal #1: ECD1A.ch Signal #2: ECD2B.ch  
 Acq On : 09 Aug 2023 15:34  
 Operator : YP/AJ  
 Sample : AR1660CCC500  
 Misc :  
 ALS Vial : 3 Sample Multiplier: 1

Instrument :  
 ECD\_O  
 ClientSampleId :  
 AR1660CCC500

Integration File signal 1: autoint1.e  
 Integration File signal 2: autoint2.e  
 Quant Time: Aug 10 01:30:12 2023  
 Quant Method : Z:\pestpcbsrv\HPCHEM1\ECD\_O\methods\P0080723.M  
 Quant Title : GC EXTRACTABLES  
 QLast Update : Tue Aug 08 04:34:41 2023  
 Response via : Initial Calibration  
 Integrator: ChemStation

Volume Inj. : 2 µl  
 Signal #1 Phase : ZB-MR1 Signal #2 Phase: ZB-MR2  
 Signal #1 Info : 30Mx0.32mmx 0.50µ Signal #2 Info : 30M x 0.32mm x 0.25µm

|     | Compound     | RT#1  | RT#2  | Resp#1   | Resp#2   | ng/ml   | ng/ml     |
|-----|--------------|-------|-------|----------|----------|---------|-----------|
| 42) | L9 AR-1268-2 | 8.863 | 7.601 | 19764143 | 53629095 | 72.081  | 319.816 # |
| 43) | L9 AR-1268-3 | 9.106 | 7.808 | 2100808  | 1058728  | 8.226   | 7.328     |
| 44) | L9 AR-1268-4 | 9.556 | 8.099 | 29407400 | 19049758 | 317.187 | 319.771   |
| 45) | L9 AR-1268-5 | 9.996 | 8.389 | 9052206  | 5654776  | 11.206  | 13.595    |

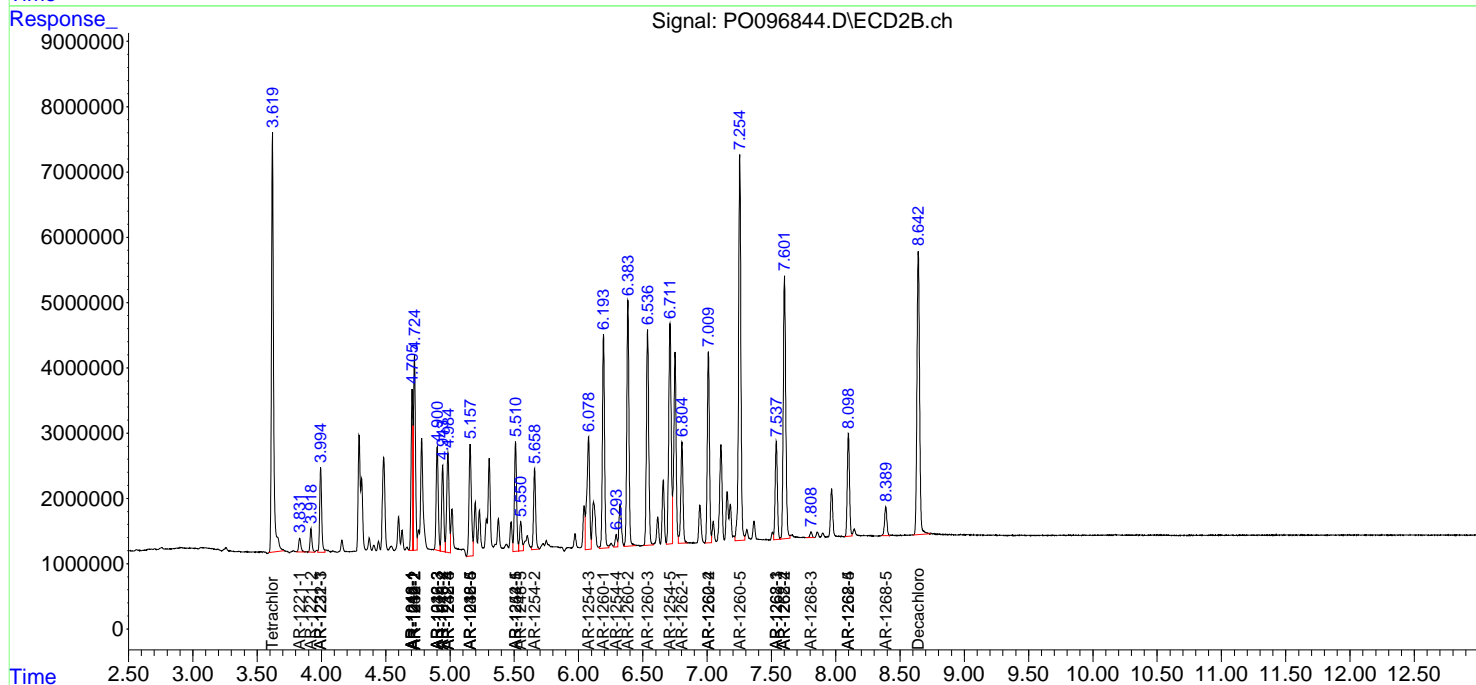
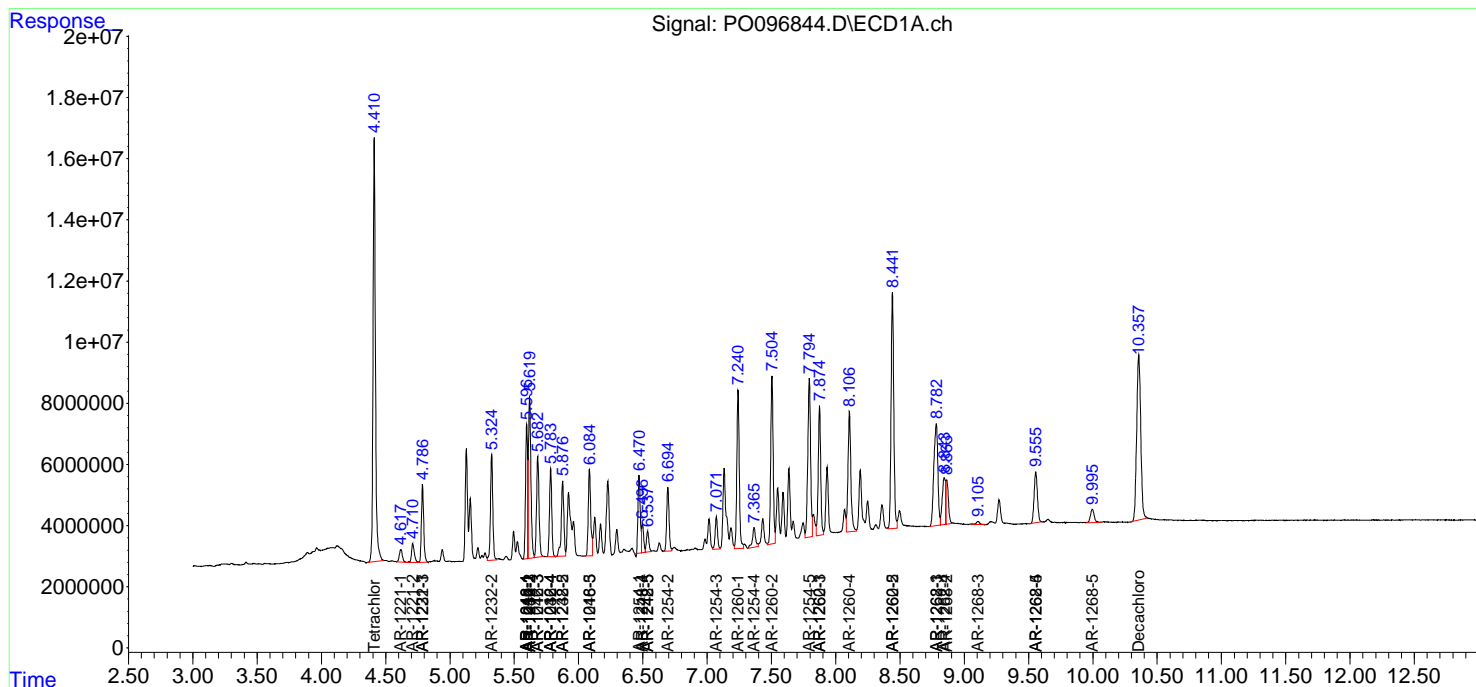
(f)=RT Delta > 1/2 Window (#)=Amounts differ by > 25% (m)=manual int.

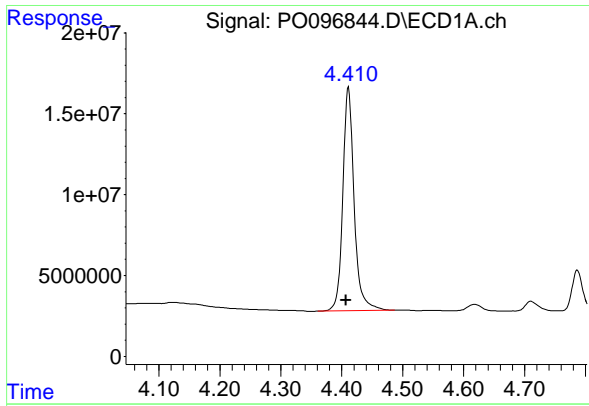
Data Path : Z:\pestpcbsrv\HPCHEM1\ECD\_O\Data\PO080923\  
 Data File : PO096844.D  
 Signal(s) : Signal #1: ECD1A.ch Signal #2: ECD2B.ch  
 Acq On : 09 Aug 2023 15:34  
 Operator : YP/AJ  
 Sample : AR1660CCC500  
 Misc :  
 ALS Vial : 3 Sample Multiplier: 1

Instrument :  
 ECD\_O  
 ClientSampleId :  
 AR1660CCC500

Integration File signal 1: autoint1.e  
 Integration File signal 2: autoint2.e  
 Quant Time: Aug 10 01:30:12 2023  
 Quant Method : Z:\pestpcbsrv\HPCHEM1\ECD\_O\methods\PO080723.M  
 Quant Title : GC EXTRACTABLES  
 QLast Update : Tue Aug 08 04:34:41 2023  
 Response via : Initial Calibration  
 Integrator: ChemStation

Volume Inj. : 2 µl  
 Signal #1 Phase : ZB-MR1 Signal #2 Phase: ZB-MR2  
 Signal #1 Info : 30Mx0.32mmx 0.50µ Signal #2 Info : 30M x 0.32mm x 0.25µm

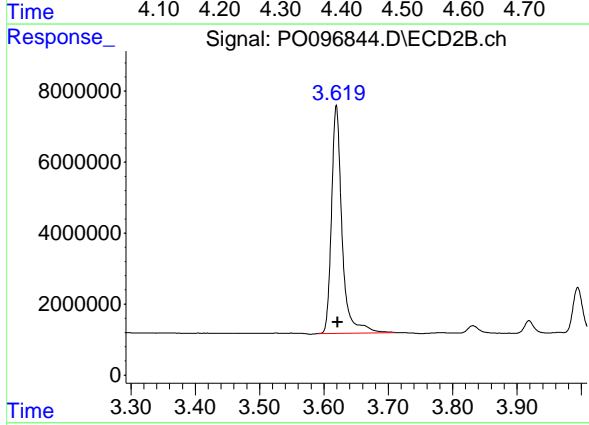




#1 Tetrachloro-m-xylene

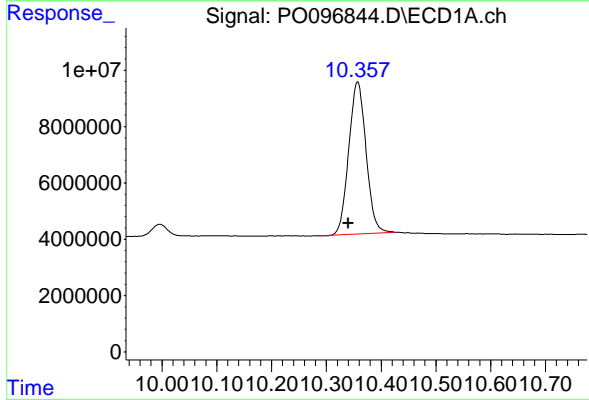
R.T.: 4.411 min  
 Delta R.T.: 0.004 min  
 Response: 178520903  
 Conc: 53.93 ng/ml

Instrument :  
 ECD\_O  
 ClientSampleId :  
 AR1660CCC500



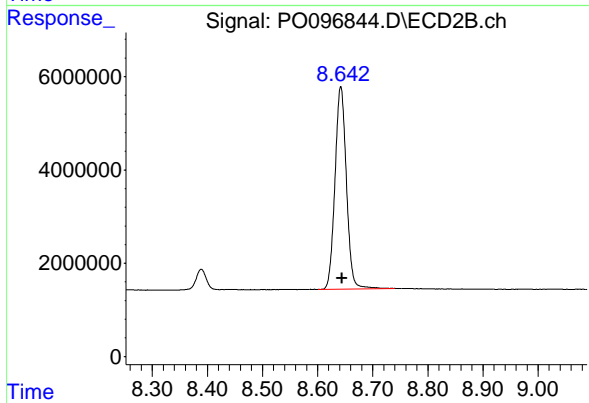
#1 Tetrachloro-m-xylene

R.T.: 3.619 min  
 Delta R.T.: -0.002 min  
 Response: 72814971  
 Conc: 55.00 ng/ml



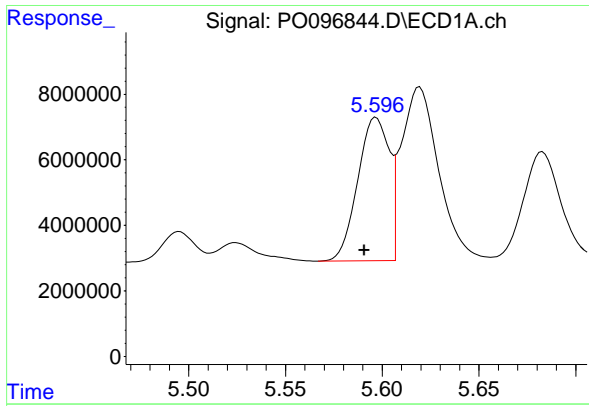
#2 Decachlorobiphenyl

R.T.: 10.357 min  
 Delta R.T.: 0.018 min  
 Response: 118570292  
 Conc: 54.19 ng/ml



#2 Decachlorobiphenyl

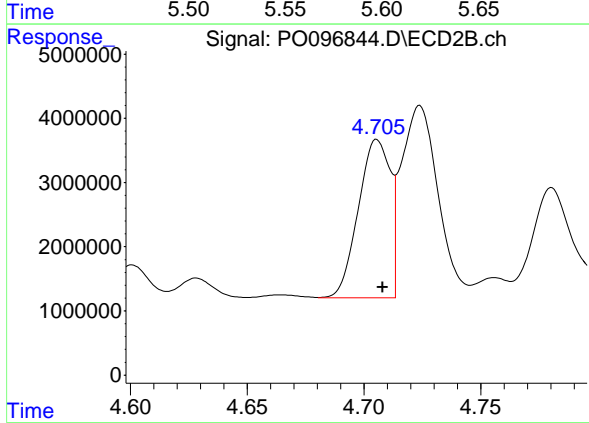
R.T.: 8.642 min  
 Delta R.T.: -0.002 min  
 Response: 62402811  
 Conc: 53.94 ng/ml



#3 AR-1016-1

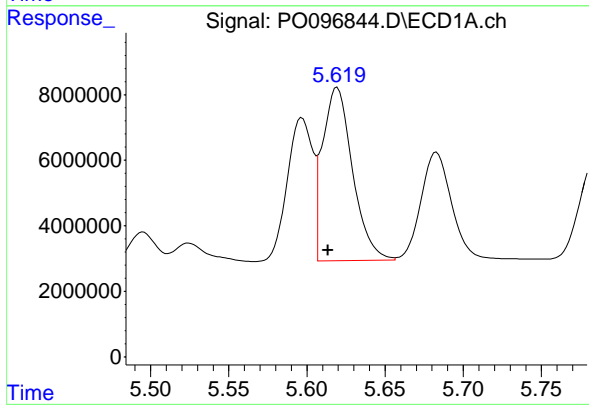
R.T.: 5.597 min  
 Delta R.T.: 0.006 min  
 Response: 49600294  
 Conc: 526.63 ng/ml

Instrument :  
 ECD\_O  
 ClientSampleId :  
 AR1660CCC500



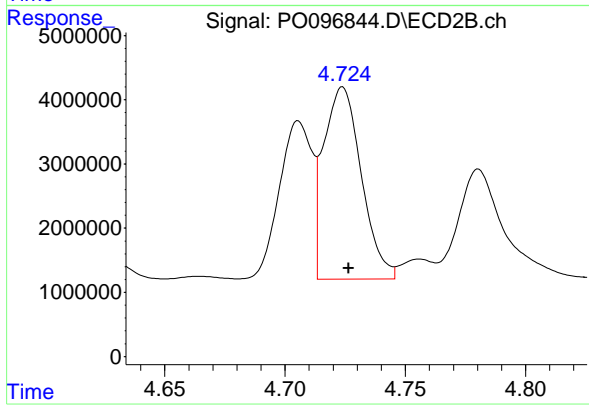
#3 AR-1016-1

R.T.: 4.706 min  
 Delta R.T.: -0.002 min  
 Response: 23407255  
 Conc: 527.95 ng/ml



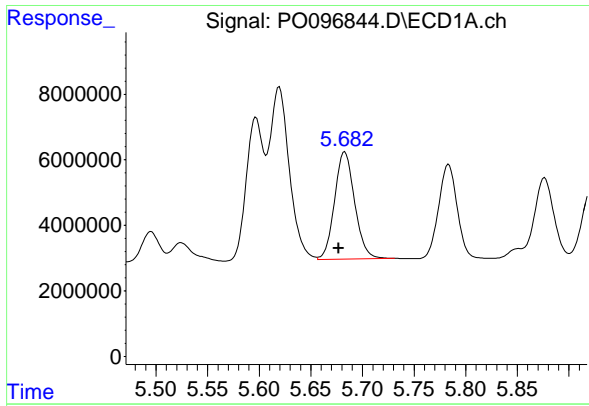
#4 AR-1016-2

R.T.: 5.619 min  
 Delta R.T.: 0.006 min  
 Response: 70749285  
 Conc: 528.87 ng/ml



#4 AR-1016-2

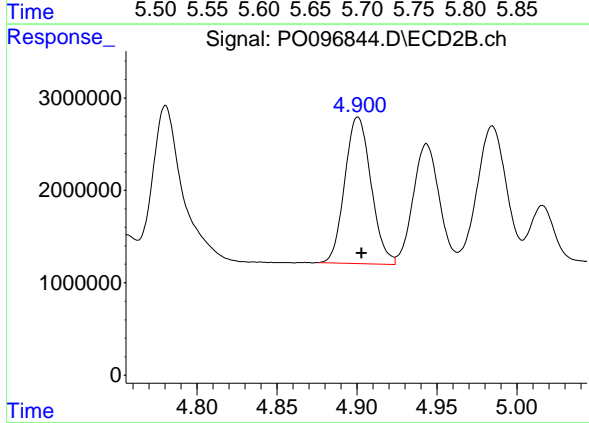
R.T.: 4.724 min  
 Delta R.T.: -0.002 min  
 Response: 32568594  
 Conc: 532.42 ng/ml



#5 AR-1016-3

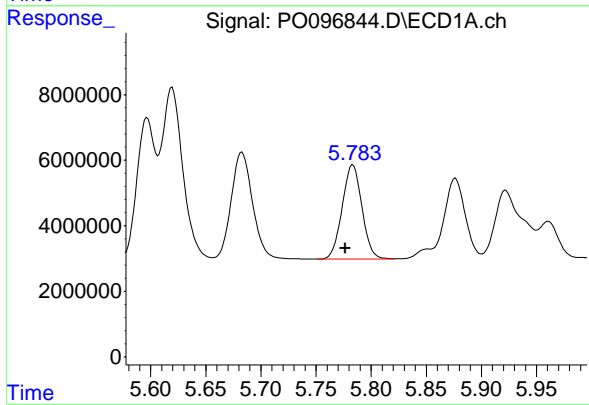
R.T.: 5.683 min  
 Delta R.T.: 0.006 min  
 Response: 44390823  
 Conc: 510.12 ng/ml

Instrument :  
 ECD\_O  
 ClientSampleId :  
 AR1660CCC500



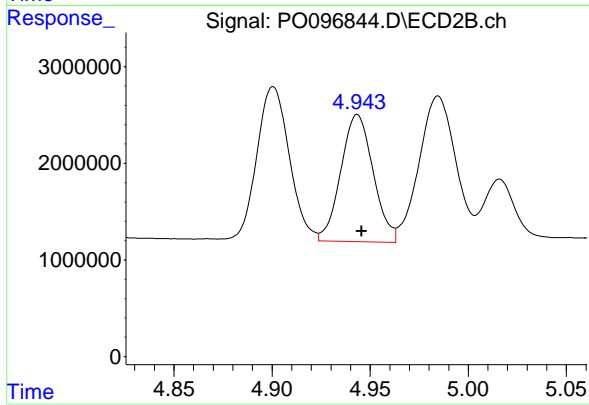
#5 AR-1016-3

R.T.: 4.901 min  
 Delta R.T.: -0.002 min  
 Response: 18180076  
 Conc: 556.50 ng/ml



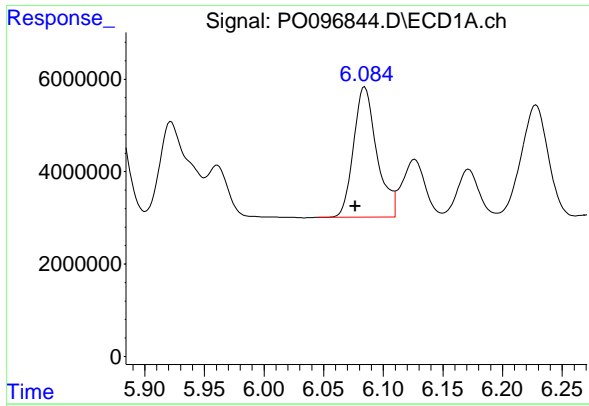
#6 AR-1016-4

R.T.: 5.783 min  
 Delta R.T.: 0.007 min  
 Response: 35812397  
 Conc: 533.16 ng/ml



#6 AR-1016-4

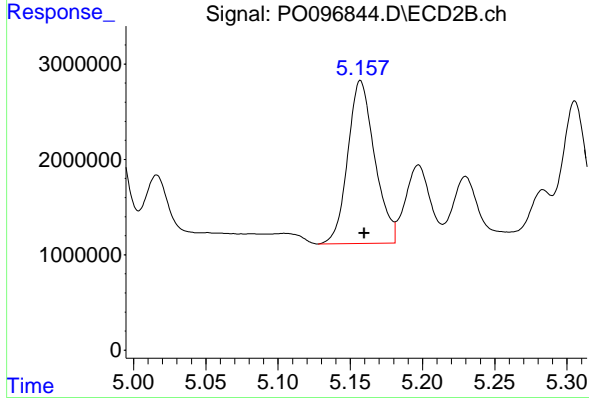
R.T.: 4.944 min  
 Delta R.T.: -0.002 min  
 Response: 15098802  
 Conc: 528.18 ng/ml



#7 AR-1016-5

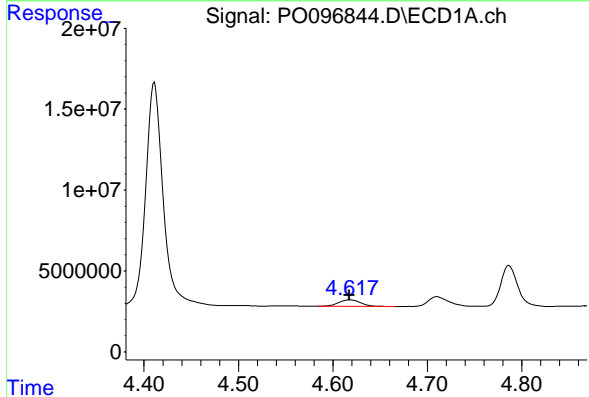
R.T.: 6.084 min  
 Delta R.T.: 0.008 min  
 Response: 38177603  
 Conc: 546.82 ng/ml

Instrument :  
 ECD\_O  
 ClientSampleId :  
 AR1660CCC500



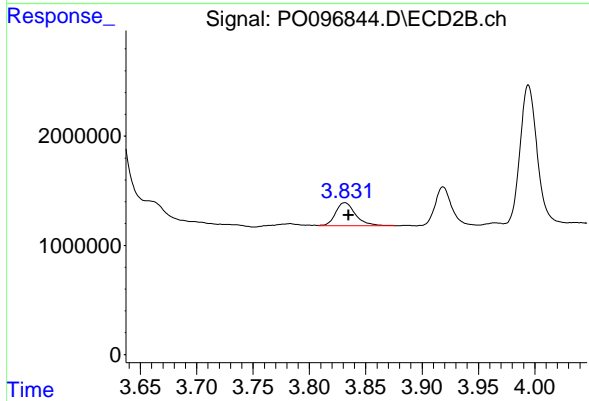
#7 AR-1016-5

R.T.: 5.157 min  
 Delta R.T.: -0.003 min  
 Response: 22155701  
 Conc: 576.27 ng/ml



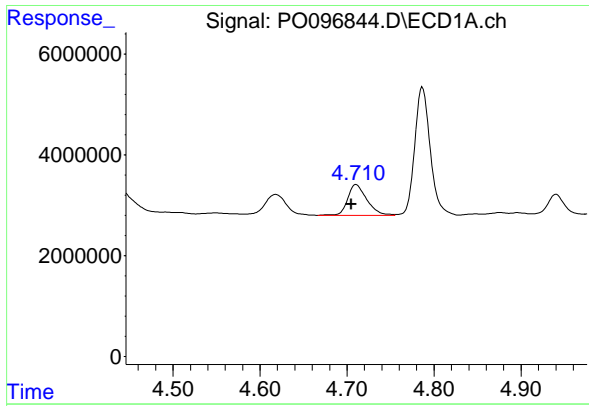
#8 AR-1221-1

R.T.: 4.618 min  
 Delta R.T.: 0.000 min  
 Response: 6725299  
 Conc: 165.02 ng/ml



#8 AR-1221-1

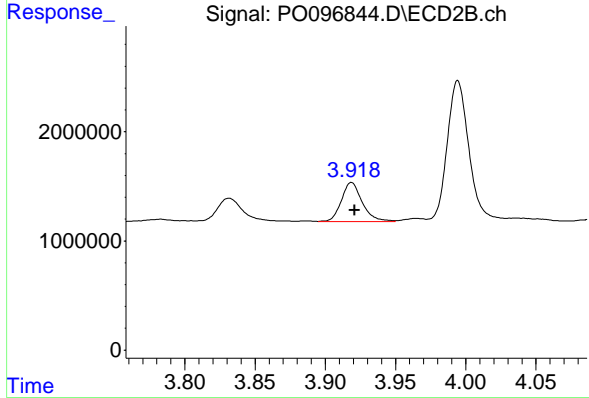
R.T.: 3.831 min  
 Delta R.T.: -0.003 min  
 Response: 2641153  
 Conc: 152.17 ng/ml



#9 AR-1221-2

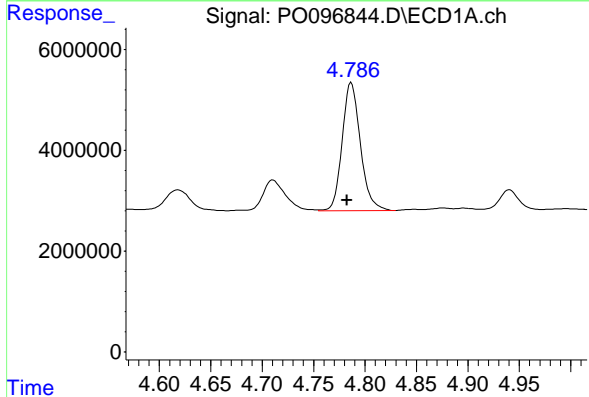
R.T.: 4.710 min  
 Delta R.T.: 0.006 min  
 Response: 9311022  
 Conc: 306.49 ng/ml

Instrument :  
 ECD\_O  
 ClientSampleId :  
 AR1660CCC500



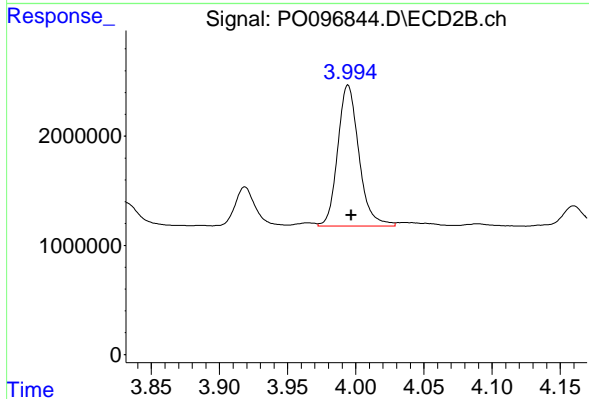
#9 AR-1221-2

R.T.: 3.919 min  
 Delta R.T.: -0.002 min  
 Response: 3678361  
 Conc: 284.69 ng/ml



#10 AR-1221-3

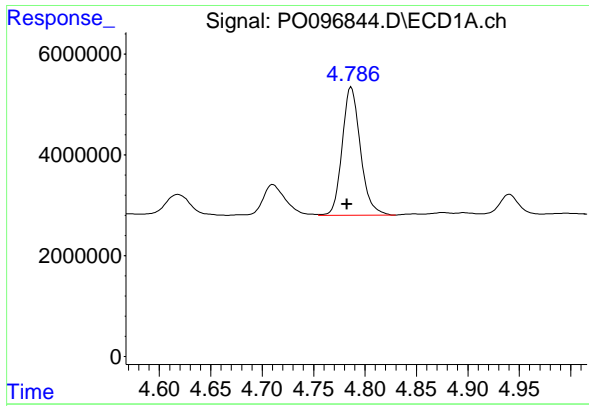
R.T.: 4.787 min  
 Delta R.T.: 0.004 min  
 Response: 31394914  
 Conc: 358.67 ng/ml



#10 AR-1221-3

R.T.: 3.994 min  
 Delta R.T.: -0.002 min  
 Response: 13966937  
 Conc: 351.86 ng/ml

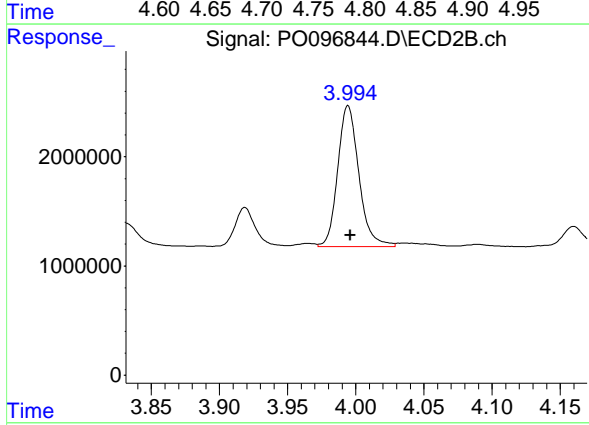




#11 AR-1232-1

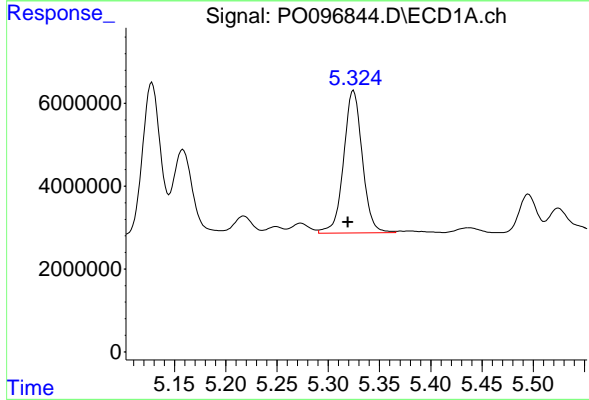
R.T.: 4.787 min  
 Delta R.T.: 0.004 min  
 Response: 31394914  
 Conc: 430.46 ng/ml

Instrument :  
 ECD\_O  
 ClientSampleId :  
 AR1660CCC500



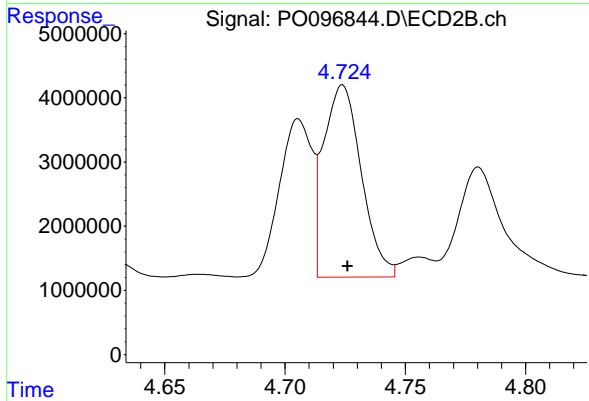
#11 AR-1232-1

R.T.: 3.994 min  
 Delta R.T.: -0.002 min  
 Response: 13966937  
 Conc: 431.78 ng/ml



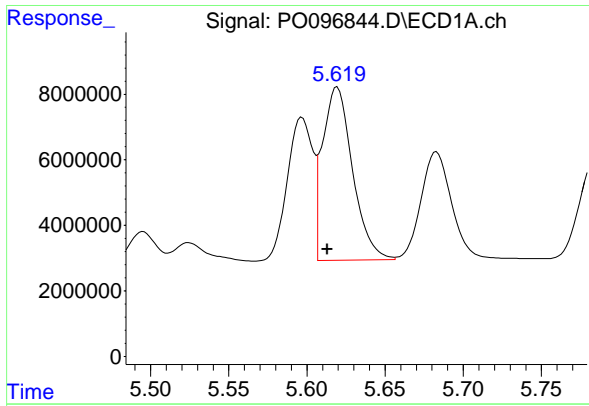
#12 AR-1232-2

R.T.: 5.325 min  
 Delta R.T.: 0.006 min  
 Response: 43704588  
 Conc: 1102.37 ng/ml



#12 AR-1232-2

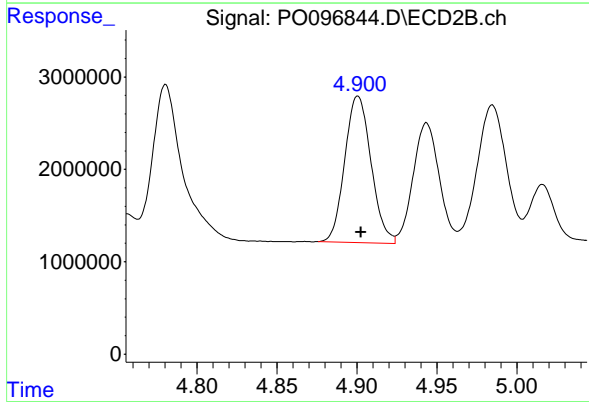
R.T.: 4.724 min  
 Delta R.T.: -0.002 min  
 Response: 32568594  
 Conc: 1128.79 ng/ml



#13 AR-1232-3

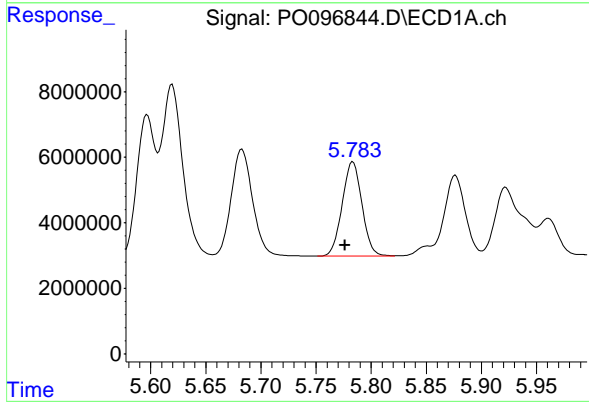
R.T.: 5.619 min  
 Delta R.T.: 0.006 min  
 Response: 70749285  
 Conc: 1156.55 ng/ml

Instrument :  
 ECD\_O  
 ClientSampleId :  
 AR1660CCC500



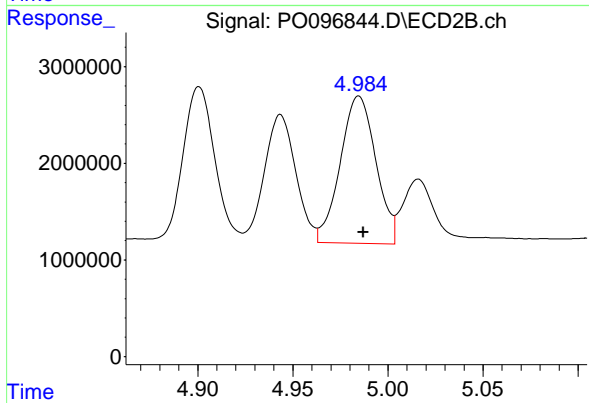
#13 AR-1232-3

R.T.: 4.901 min  
 Delta R.T.: -0.002 min  
 Response: 18180076  
 Conc: 1199.07 ng/ml



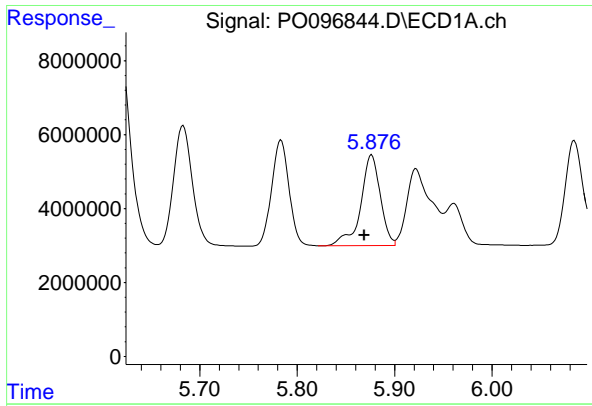
#14 AR-1232-4

R.T.: 5.783 min  
 Delta R.T.: 0.007 min  
 Response: 35812397  
 Conc: 1173.64 ng/ml



#14 AR-1232-4

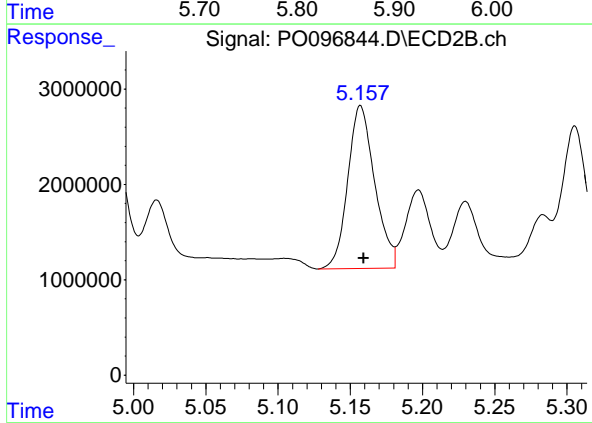
R.T.: 4.985 min  
 Delta R.T.: -0.002 min  
 Response: 19868370  
 Conc: 1329.46 ng/ml



#15 AR-1232-5

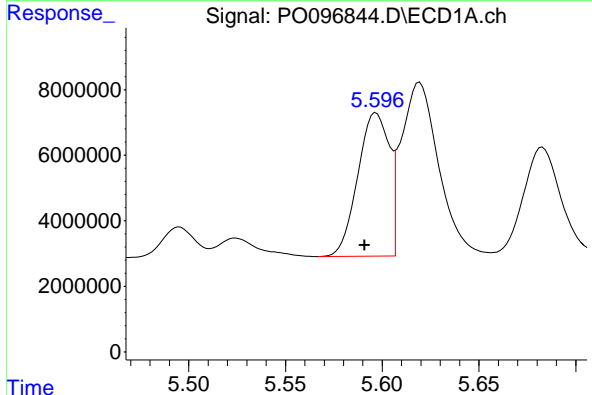
R.T.: 5.877 min  
 Delta R.T.: 0.008 min  
 Response: 34300576  
 Conc: 1225.76 ng/ml

Instrument :  
 ECD\_O  
 ClientSampleId :  
 AR1660CCC500



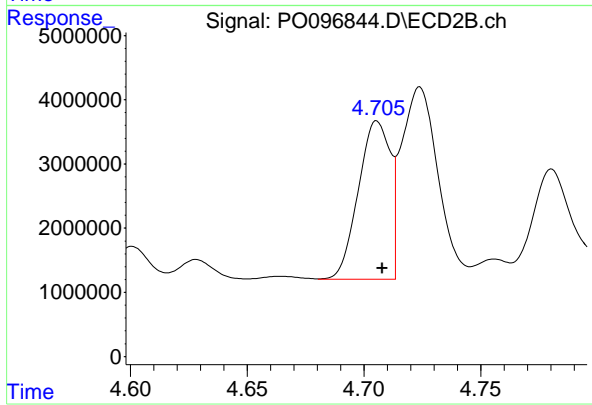
#15 AR-1232-5

R.T.: 5.157 min  
 Delta R.T.: -0.002 min  
 Response: 22155701  
 Conc: 1355.36 ng/ml



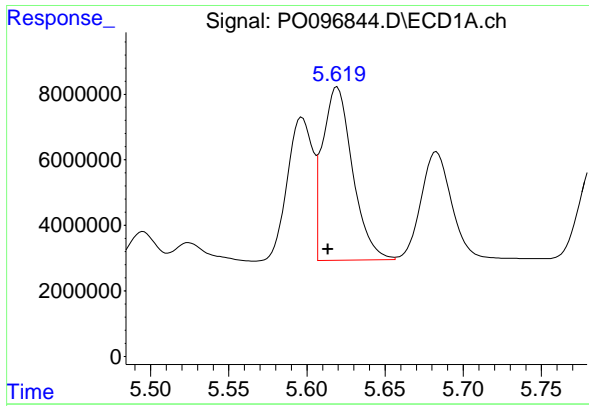
#16 AR-1242-1

R.T.: 5.597 min  
 Delta R.T.: 0.006 min  
 Response: 49600294  
 Conc: 591.77 ng/ml



#16 AR-1242-1

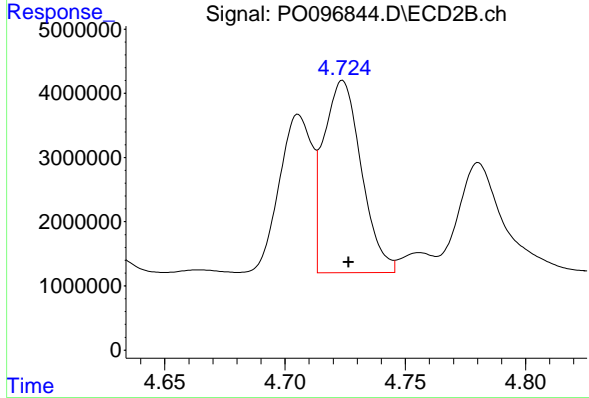
R.T.: 4.706 min  
 Delta R.T.: -0.002 min  
 Response: 23407255  
 Conc: 593.72 ng/ml



#17 AR-1242-2

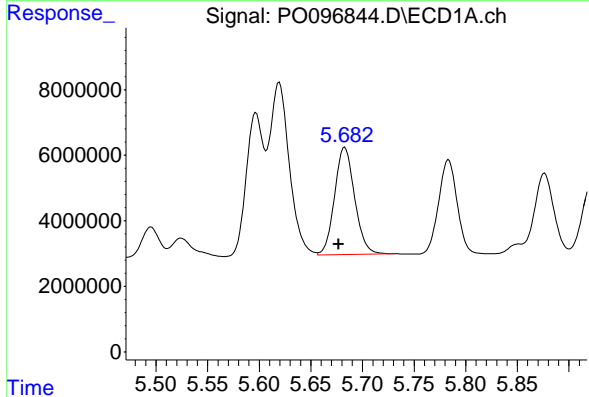
R.T.: 5.619 min  
 Delta R.T.: 0.006 min  
 Response: 70749285  
 Conc: 600.78 ng/ml

Instrument :  
 ECD\_O  
 ClientSampleId :  
 AR1660CCC500



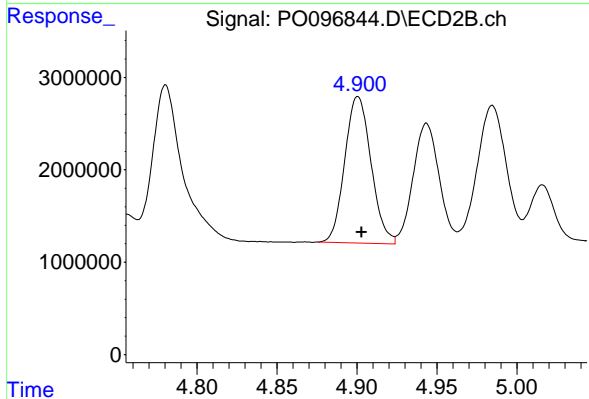
#17 AR-1242-2

R.T.: 4.724 min  
 Delta R.T.: -0.003 min  
 Response: 32568594  
 Conc: 597.69 ng/ml



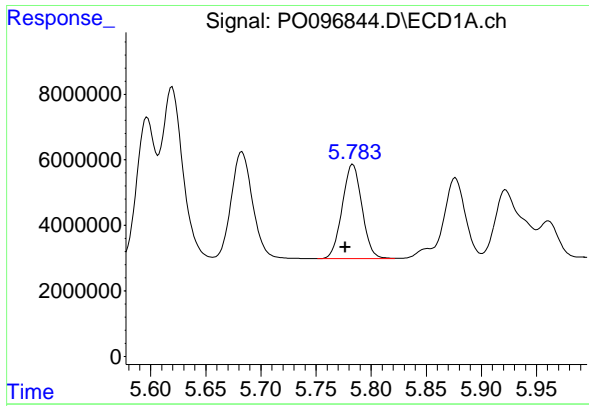
#18 AR-1242-3

R.T.: 5.683 min  
 Delta R.T.: 0.006 min  
 Response: 44390823  
 Conc: 600.91 ng/ml



#18 AR-1242-3

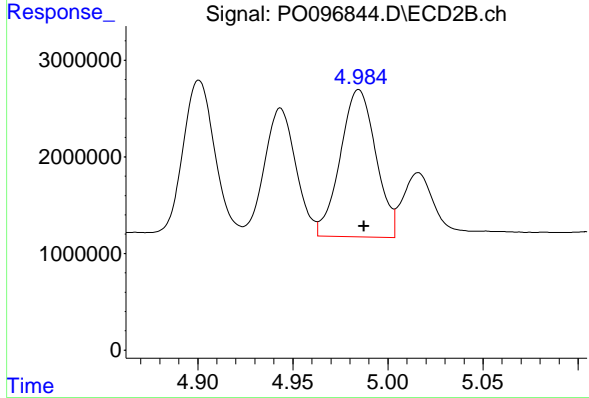
R.T.: 4.901 min  
 Delta R.T.: -0.002 min  
 Response: 18180076  
 Conc: 614.84 ng/ml



#19 AR-1242-4

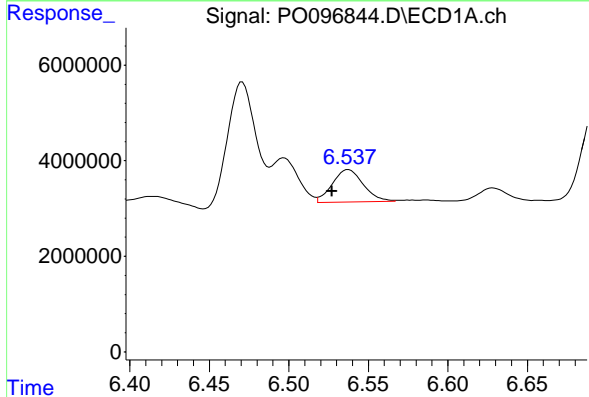
R.T.: 5.783 min  
 Delta R.T.: 0.007 min  
 Response: 35812397  
 Conc: 601.58 ng/ml

Instrument :  
 ECD\_O  
 ClientSampleId :  
 AR1660CCC500



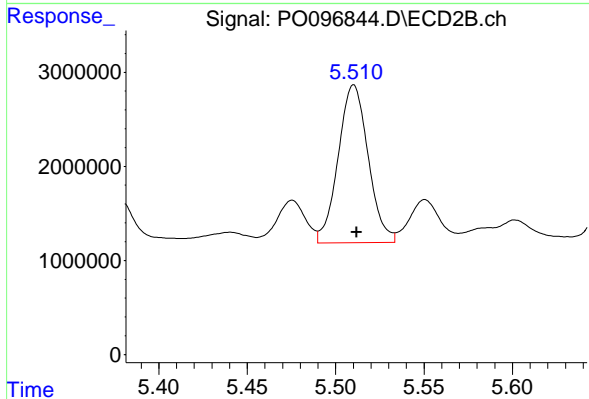
#19 AR-1242-4

R.T.: 4.985 min  
 Delta R.T.: -0.003 min  
 Response: 19868370  
 Conc: 630.46 ng/ml



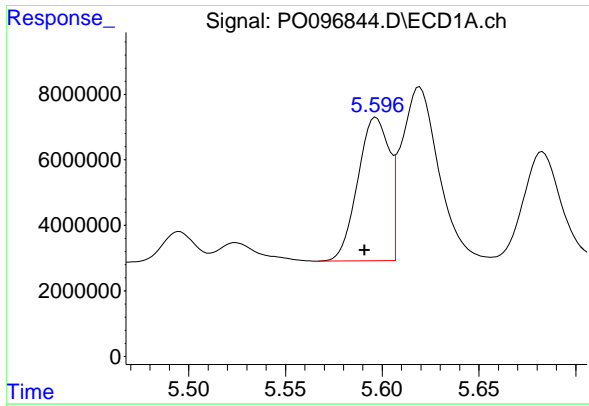
#20 AR-1242-5

R.T.: 6.537 min  
 Delta R.T.: 0.010 min  
 Response: 9147698  
 Conc: 166.26 ng/ml



#20 AR-1242-5

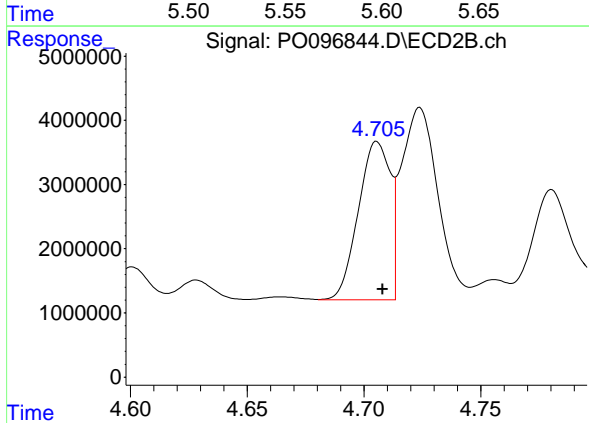
R.T.: 5.510 min  
 Delta R.T.: -0.002 min  
 Response: 19828543  
 Conc: 544.20 ng/ml



#21 AR-1248-1

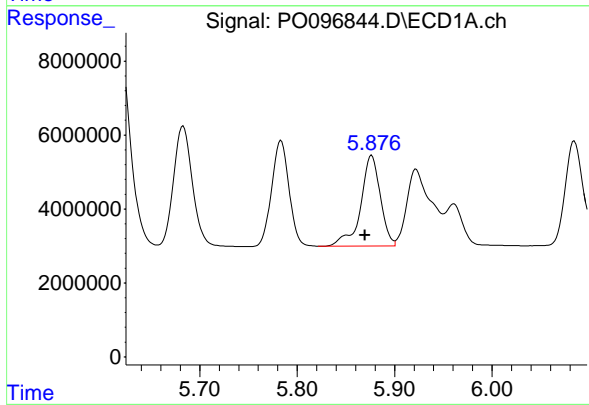
R.T.: 5.597 min  
 Delta R.T.: 0.006 min  
 Response: 49600294  
 Conc: 846.51 ng/ml

Instrument :  
 ECD\_O  
 ClientSampleId :  
 AR1660CCC500



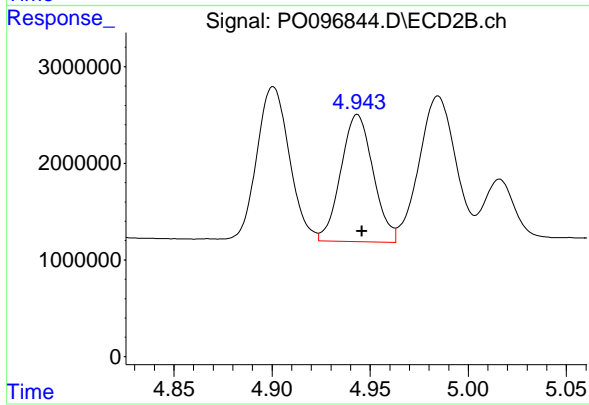
#21 AR-1248-1

R.T.: 4.706 min  
 Delta R.T.: -0.002 min  
 Response: 23407255  
 Conc: 834.11 ng/ml



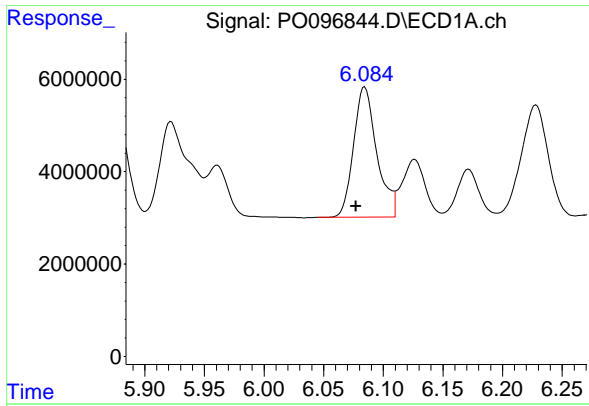
#22 AR-1248-2

R.T.: 5.877 min  
 Delta R.T.: 0.007 min  
 Response: 34300576  
 Conc: 364.83 ng/ml



#22 AR-1248-2

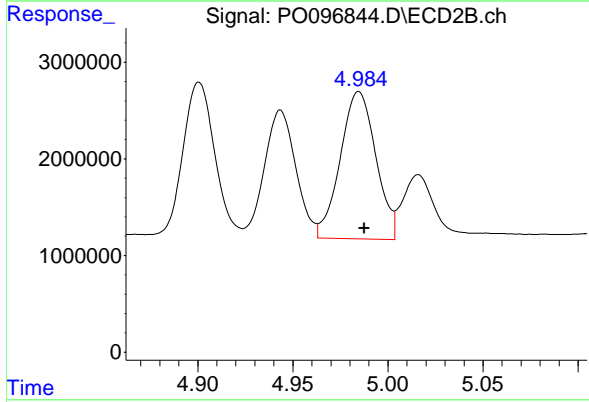
R.T.: 4.944 min  
 Delta R.T.: -0.002 min  
 Response: 15098802  
 Conc: 356.26 ng/ml



#23 AR-1248-3

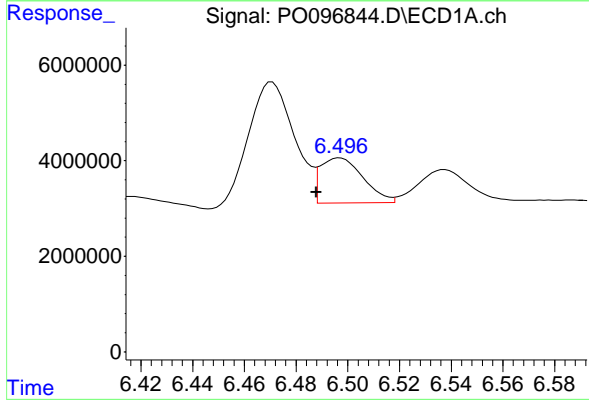
R.T.: 6.084 min  
 Delta R.T.: 0.008 min  
 Response: 38177603  
 Conc: 390.33 ng/ml

Instrument :  
 ECD\_O  
 ClientSampleId :  
 AR1660CCC500



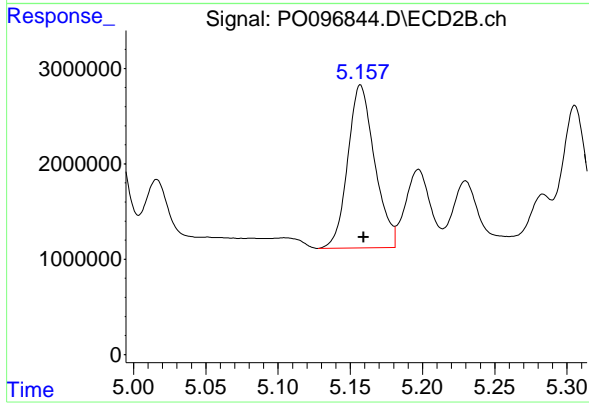
#23 AR-1248-3

R.T.: 4.985 min  
 Delta R.T.: -0.003 min  
 Response: 19868370  
 Conc: 452.94 ng/ml



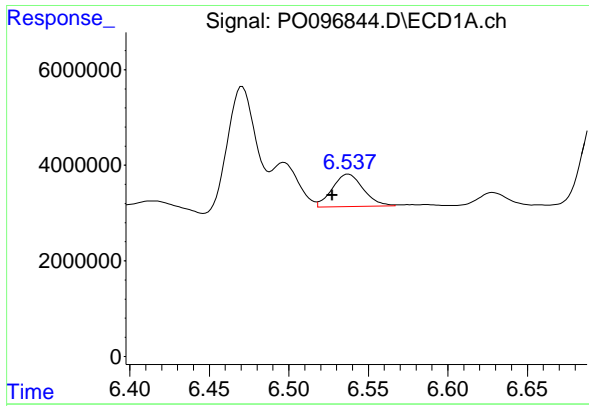
#24 AR-1248-4

R.T.: 6.497 min  
 Delta R.T.: 0.009 min  
 Response: 10815977  
 Conc: 119.06 ng/ml



#24 AR-1248-4

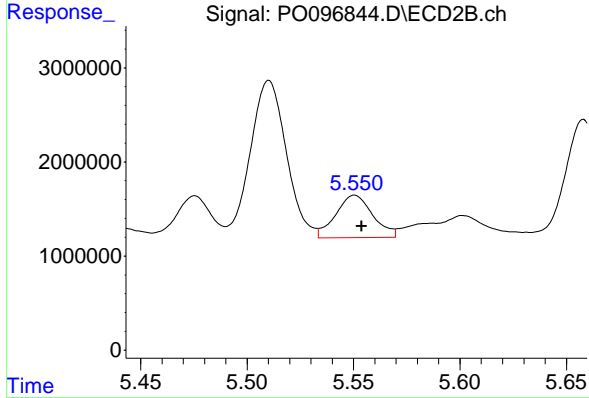
R.T.: 5.157 min  
 Delta R.T.: -0.002 min  
 Response: 22155701  
 Conc: 434.00 ng/ml



#25 AR-1248-5

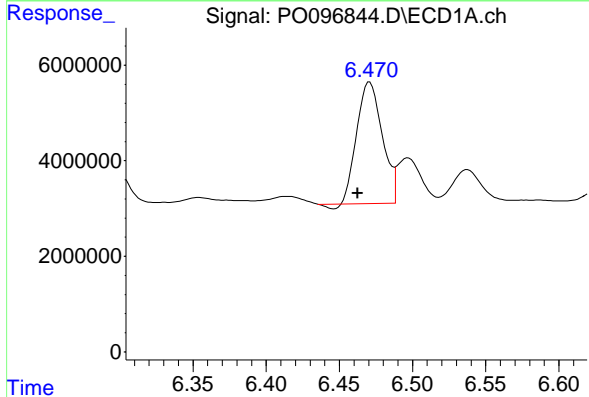
R.T.: 6.537 min  
 Delta R.T.: 0.010 min  
 Response: 9147698  
 Conc: 103.85 ng/ml

Instrument :  
 ECD\_O  
 ClientSampleId :  
 AR1660CCC500



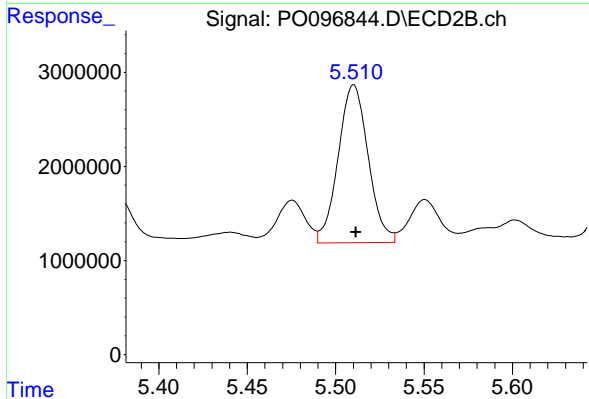
#25 AR-1248-5

R.T.: 5.551 min  
 Delta R.T.: -0.003 min  
 Response: 5440952  
 Conc: 116.38 ng/ml



#26 AR-1254-1

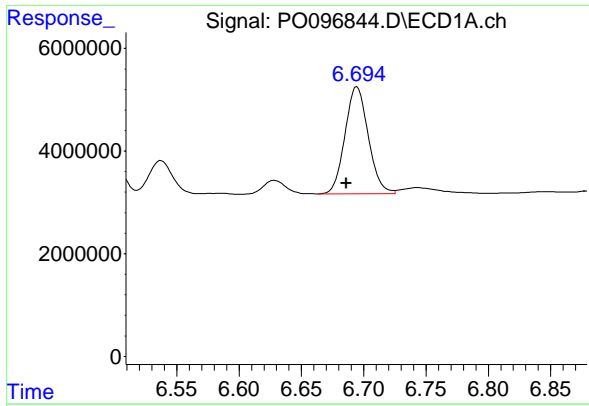
R.T.: 6.471 min  
 Delta R.T.: 0.008 min  
 Response: 30595173  
 Conc: 279.94 ng/ml



#26 AR-1254-1

R.T.: 5.510 min  
 Delta R.T.: -0.001 min  
 Response: 19828543  
 Conc: 268.69 ng/ml

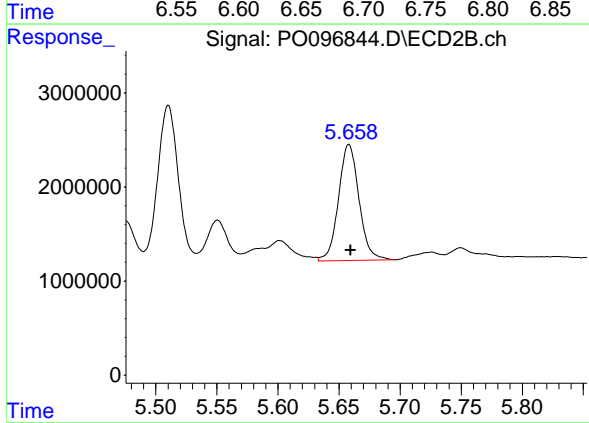




#27 AR-1254-2

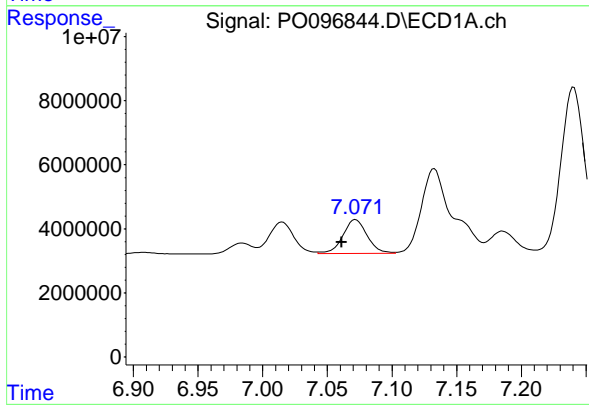
R.T.: 6.695 min  
 Delta R.T.: 0.009 min  
 Response: 27278262  
 Conc: 169.19 ng/ml

Instrument :  
 ECD\_O  
 ClientSampleId :  
 AR1660CCC500



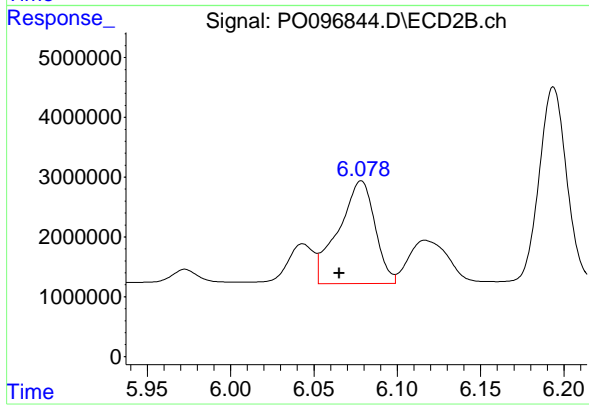
#27 AR-1254-2

R.T.: 5.658 min  
 Delta R.T.: -0.001 min  
 Response: 14429204  
 Conc: 219.02 ng/ml



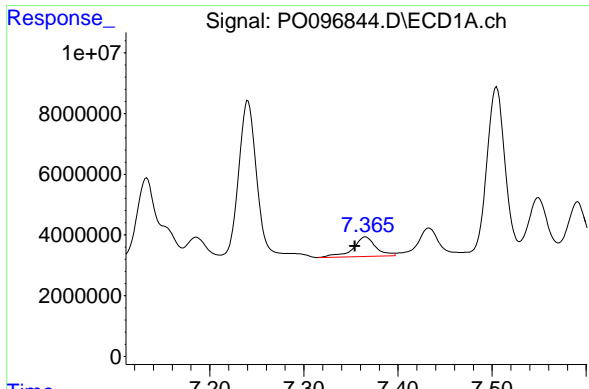
#28 AR-1254-3

R.T.: 7.072 min  
 Delta R.T.: 0.011 min  
 Response: 13863279  
 Conc: 88.47 ng/ml



#28 AR-1254-3

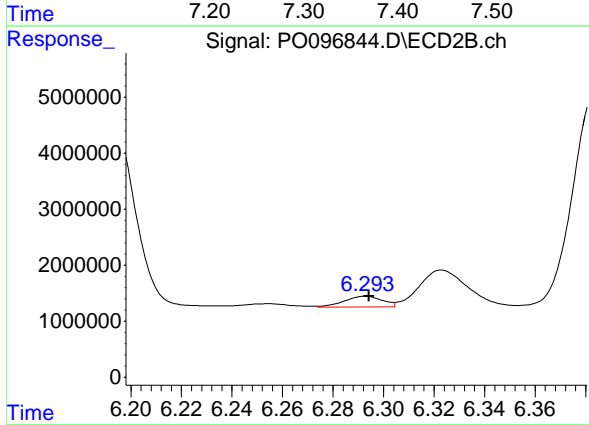
R.T.: 6.078 min  
 Delta R.T.: 0.013 min  
 Response: 26146138  
 Conc: 258.71 ng/ml



#29 AR-1254-4

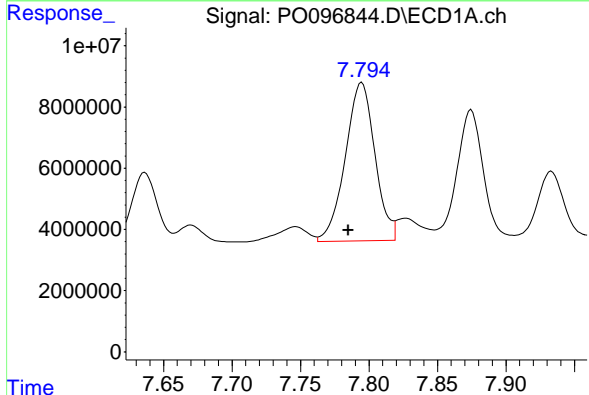
R.T.: 7.366 min  
 Delta R.T.: 0.011 min  
 Response: 10774185  
 Conc: 106.87 ng/ml

Instrument :  
 ECD\_O  
 ClientSampleId :  
 AR1660CCC500



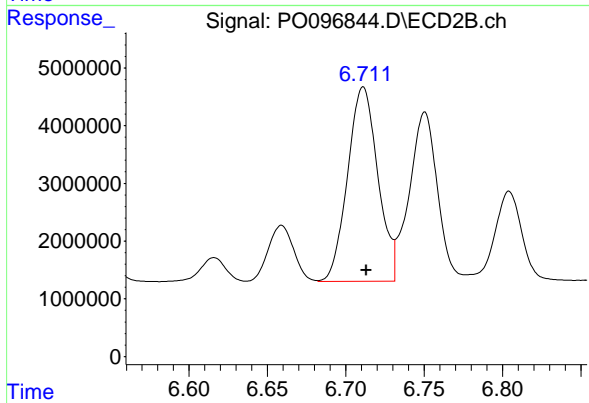
#29 AR-1254-4

R.T.: 6.293 min  
 Delta R.T.: -0.001 min  
 Response: 2004879  
 Conc: 34.64 ng/ml



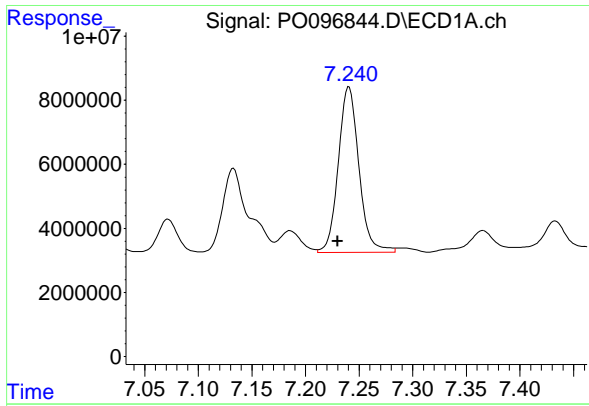
#30 AR-1254-5

R.T.: 7.795 min  
 Delta R.T.: 0.010 min  
 Response: 77961264  
 Conc: 694.75 ng/ml



#30 AR-1254-5

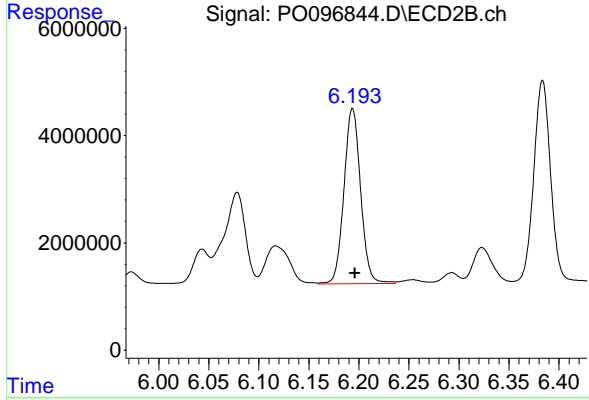
R.T.: 6.711 min  
 Delta R.T.: -0.002 min  
 Response: 45300999  
 Conc: 515.28 ng/ml



#31 AR-1260-1

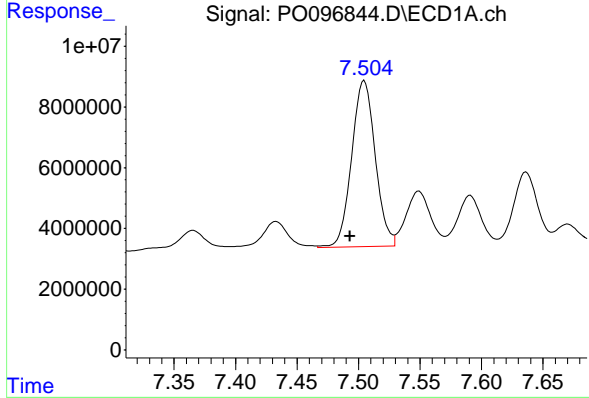
R.T.: 7.241 min  
 Delta R.T.: 0.011 min  
 Response: 69363065  
 Conc: 551.87 ng/ml

Instrument :  
 ECD\_O  
 ClientSampleId :  
 AR1660CCC500



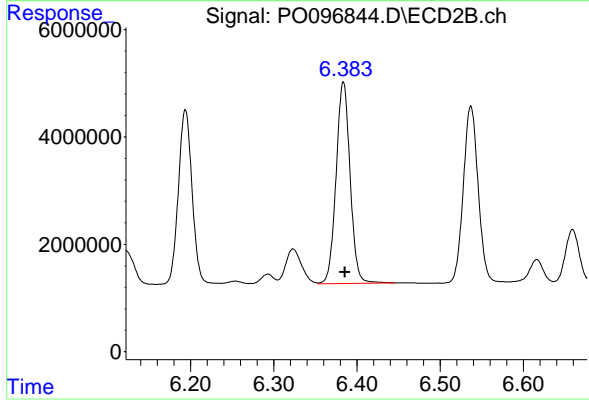
#31 AR-1260-1

R.T.: 6.194 min  
 Delta R.T.: -0.002 min  
 Response: 37912513  
 Conc: 538.77 ng/ml



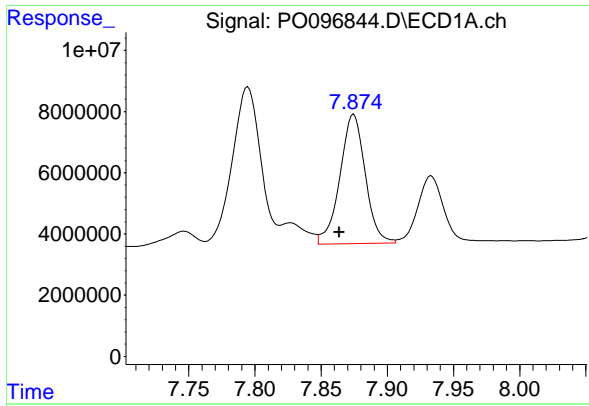
#32 AR-1260-2

R.T.: 7.505 min  
 Delta R.T.: 0.012 min  
 Response: 73037820  
 Conc: 542.08 ng/ml



#32 AR-1260-2

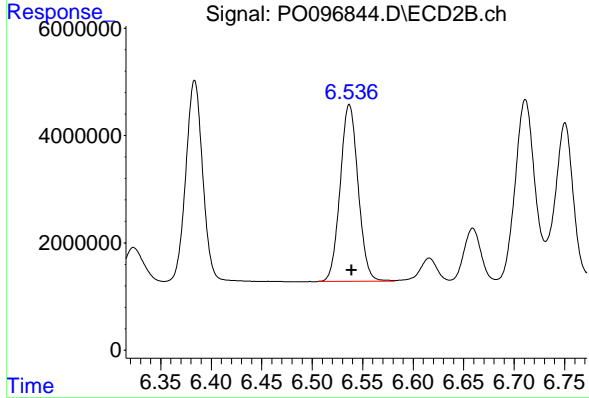
R.T.: 6.384 min  
 Delta R.T.: -0.002 min  
 Response: 44002180  
 Conc: 527.20 ng/ml



#33 AR-1260-3

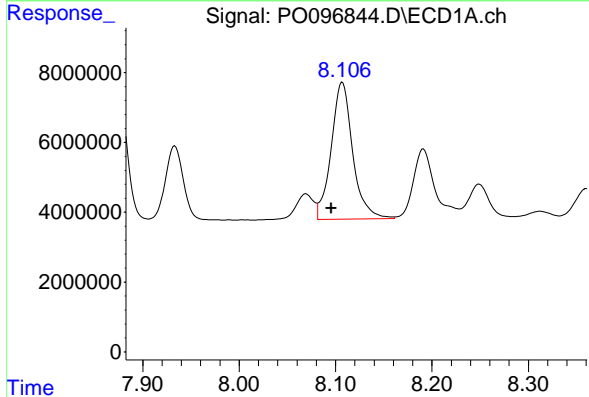
R.T.: 7.875 min  
 Delta R.T.: 0.011 min  
 Response: 56384799  
 Conc: 543.34 ng/ml

Instrument :  
 ECD\_O  
 ClientSampleId :  
 AR1660CCC500



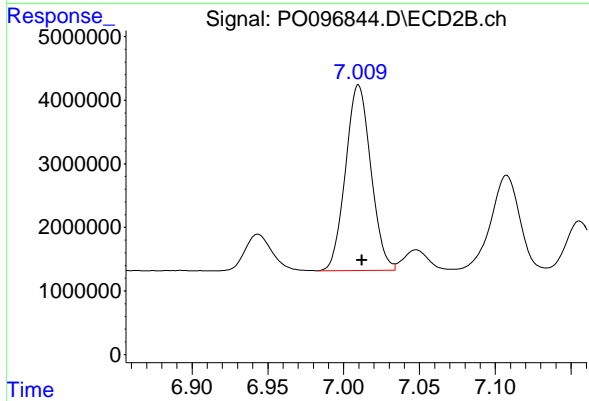
#33 AR-1260-3

R.T.: 6.537 min  
 Delta R.T.: -0.002 min  
 Response: 40762897  
 Conc: 527.88 ng/ml



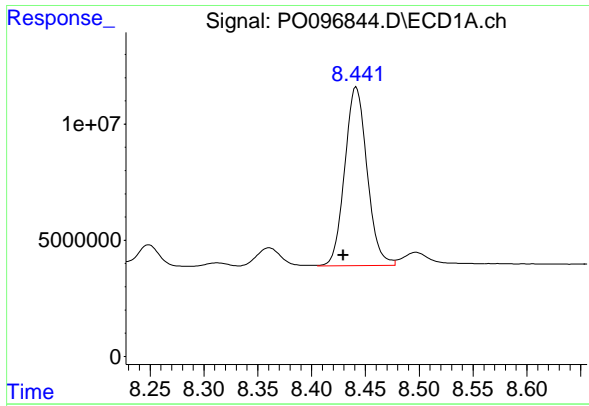
#34 AR-1260-4

R.T.: 8.107 min  
 Delta R.T.: 0.012 min  
 Response: 61153112  
 Conc: 546.97 ng/ml



#34 AR-1260-4

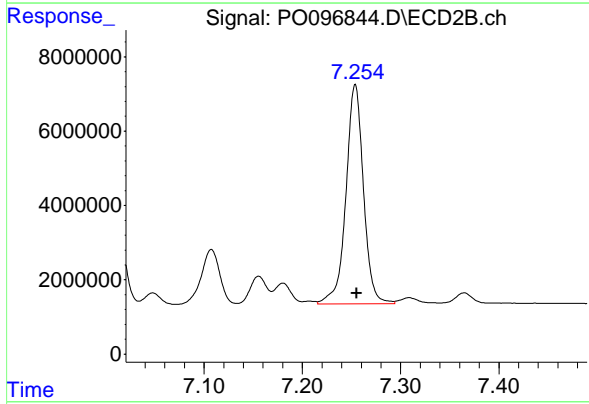
R.T.: 7.010 min  
 Delta R.T.: -0.002 min  
 Response: 34005028  
 Conc: 530.65 ng/ml



#35 AR-1260-5

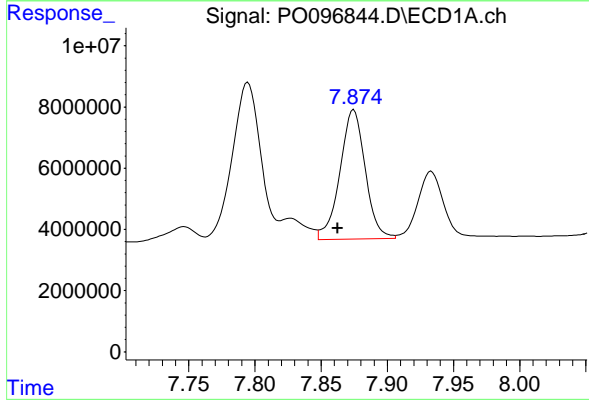
R.T.: 8.441 min  
 Delta R.T.: 0.012 min  
 Response: 111244973  
 Conc: 529.79 ng/ml

Instrument :  
 ECD\_O  
 ClientSampleId :  
 AR1660CCC500



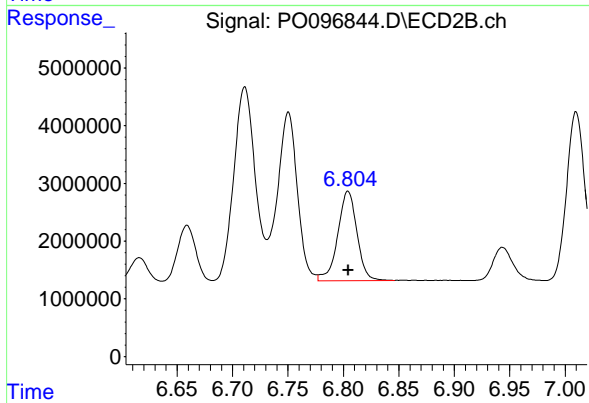
#35 AR-1260-5

R.T.: 7.254 min  
 Delta R.T.: -0.002 min  
 Response: 73262025  
 Conc: 528.46 ng/ml



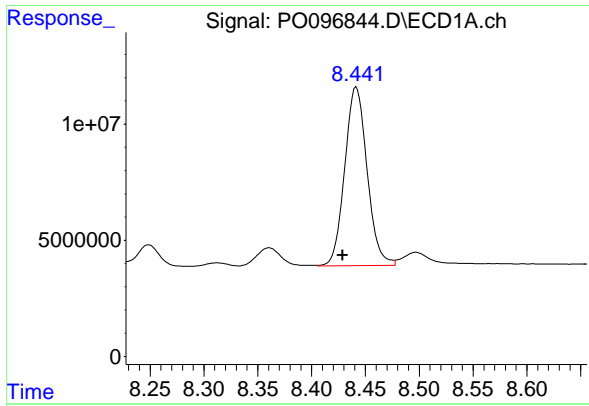
#36 AR-1262-1

R.T.: 7.875 min  
 Delta R.T.: 0.012 min  
 Response: 56384799  
 Conc: 379.63 ng/ml



#36 AR-1262-1

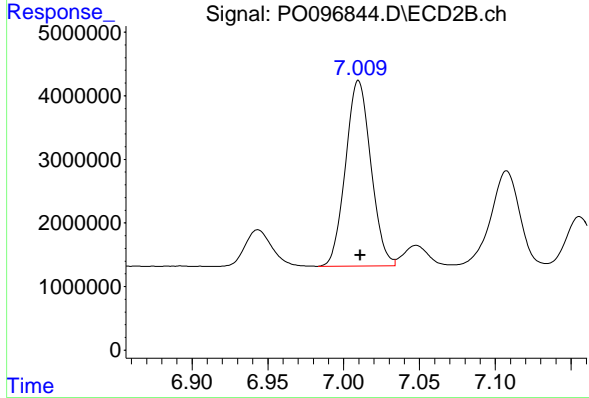
R.T.: 6.804 min  
 Delta R.T.: 0.000 min  
 Response: 18732376  
 Conc: 475.82 ng/ml



#37 AR-1262-2

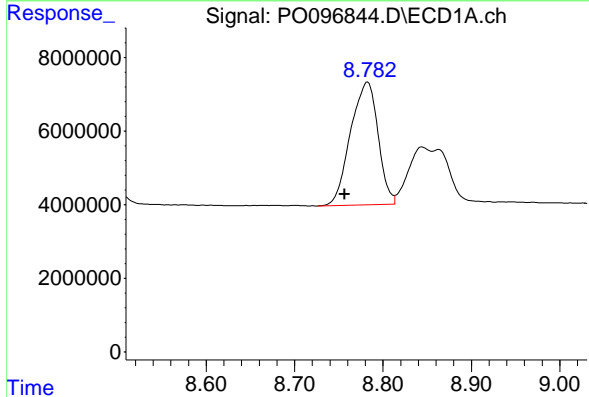
R.T.: 8.441 min  
 Delta R.T.: 0.012 min  
 Response: 111244973  
 Conc: 480.61 ng/ml

Instrument :  
 ECD\_O  
 ClientSampleId :  
 AR1660CCC500



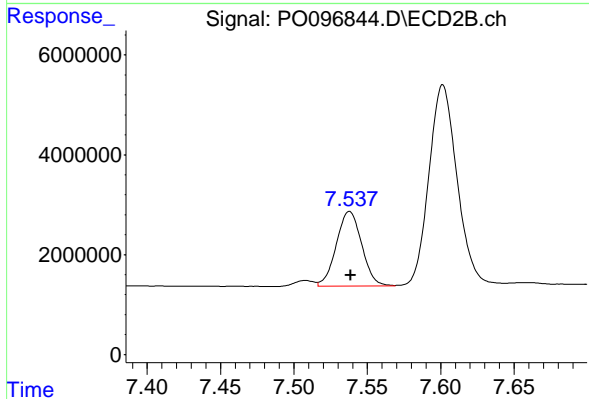
#37 AR-1262-2

R.T.: 7.010 min  
 Delta R.T.: -0.001 min  
 Response: 34005028  
 Conc: 419.27 ng/ml



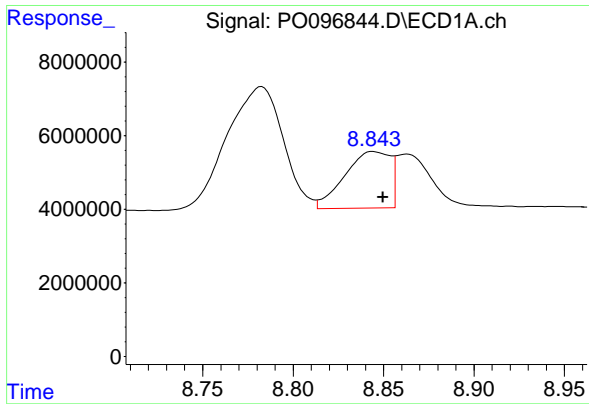
#38 AR-1262-3

R.T.: 8.783 min  
 Delta R.T.: 0.026 min  
 Response: 72146573  
 Conc: 432.54 ng/ml



#38 AR-1262-3

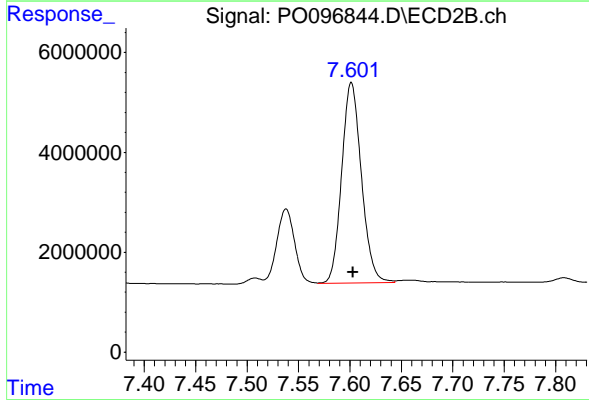
R.T.: 7.538 min  
 Delta R.T.: 0.000 min  
 Response: 18019174  
 Conc: 280.79 ng/ml



#39 AR-1262-4

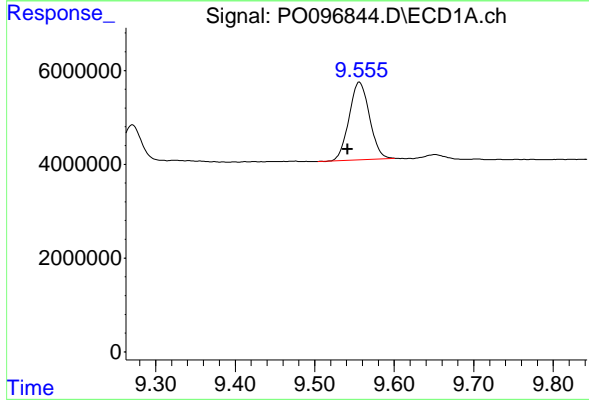
R.T.: 8.844 min  
 Delta R.T.: -0.005 min  
 Response: 26815574  
 Conc: 367.80 ng/ml

Instrument :  
 ECD\_O  
 ClientSampleId :  
 AR1660CCC500



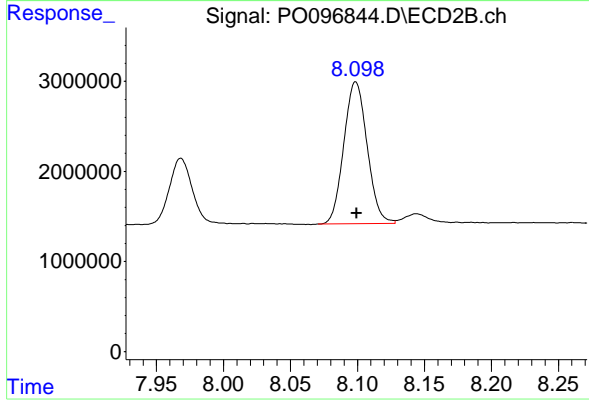
#39 AR-1262-4

R.T.: 7.601 min  
 Delta R.T.: -0.002 min  
 Response: 53629095  
 Conc: 472.08 ng/ml



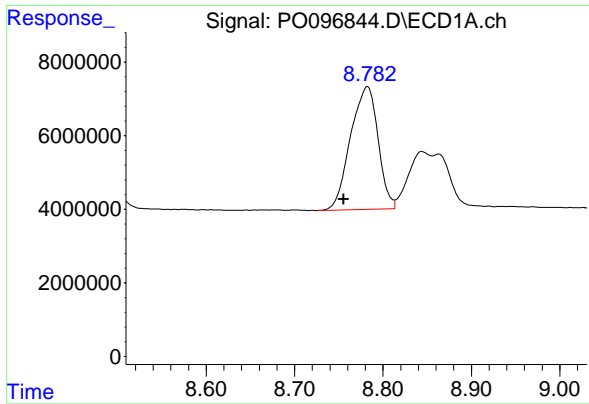
#40 AR-1262-5

R.T.: 9.556 min  
 Delta R.T.: 0.015 min  
 Response: 29407400  
 Conc: 353.12 ng/ml



#40 AR-1262-5

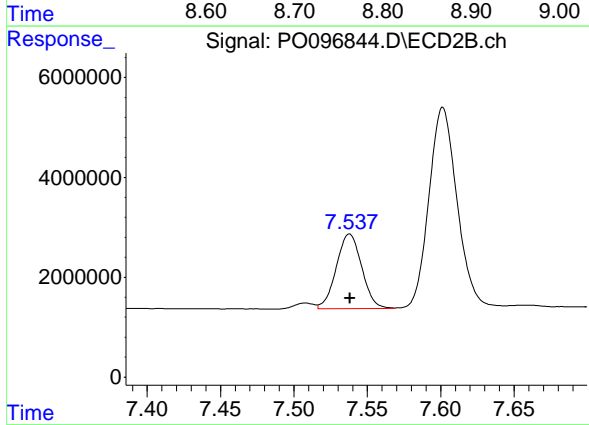
R.T.: 8.099 min  
 Delta R.T.: 0.000 min  
 Response: 19049758  
 Conc: 362.73 ng/ml



#41 AR-1268-1

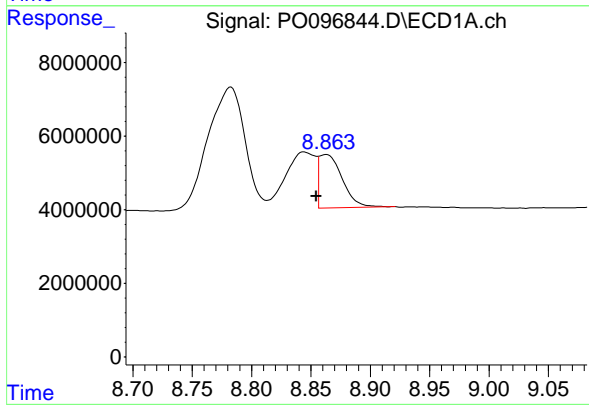
R.T.: 8.783 min  
 Delta R.T.: 0.027 min  
 Response: 72146573  
 Conc: 234.70 ng/ml

Instrument :  
 ECD\_O  
 ClientSampleId :  
 AR1660CCC500



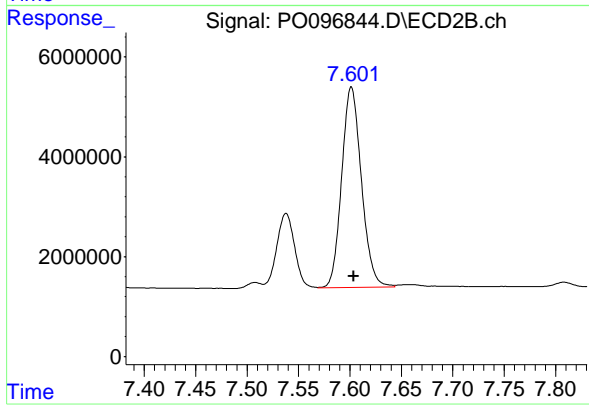
#41 AR-1268-1

R.T.: 7.538 min  
 Delta R.T.: 0.000 min  
 Response: 18019174  
 Conc: 97.25 ng/ml



#42 AR-1268-2

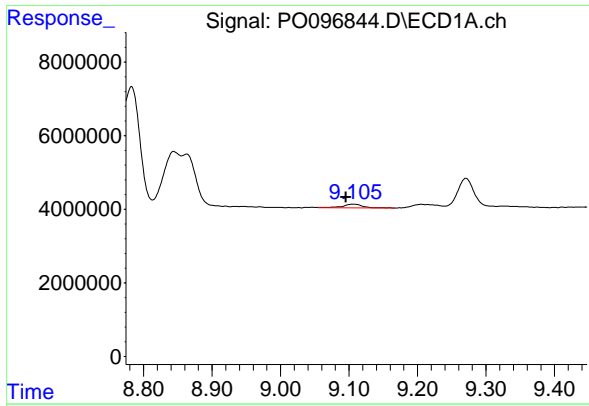
R.T.: 8.863 min  
 Delta R.T.: 0.008 min  
 Response: 19764143  
 Conc: 72.08 ng/ml



#42 AR-1268-2

R.T.: 7.601 min  
 Delta R.T.: -0.002 min  
 Response: 53629095  
 Conc: 319.82 ng/ml

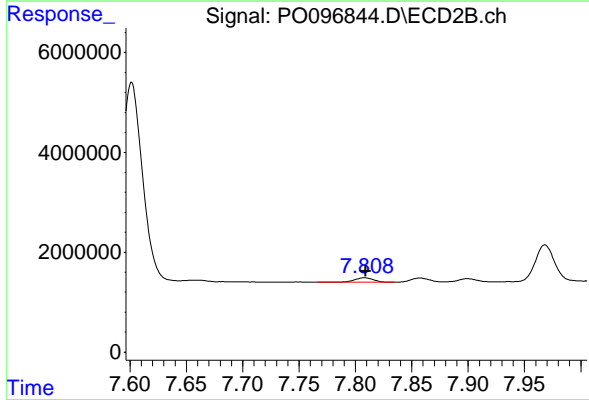




#43 AR-1268-3

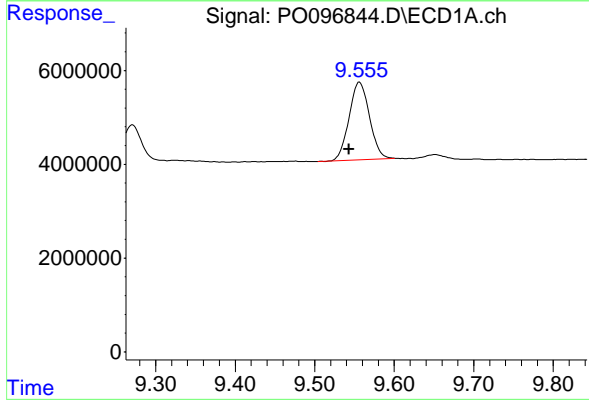
R.T.: 9.106 min  
 Delta R.T.: 0.011 min  
 Response: 2100808  
 Conc: 8.23 ng/ml

Instrument :  
 ECD\_O  
 ClientSampleId :  
 AR1660CCC500



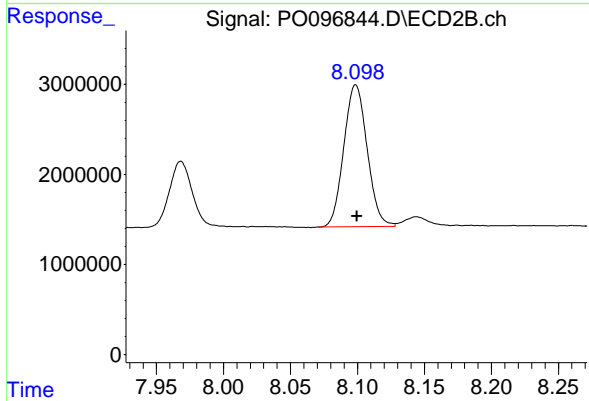
#43 AR-1268-3

R.T.: 7.808 min  
 Delta R.T.: -0.001 min  
 Response: 1058728  
 Conc: 7.33 ng/ml



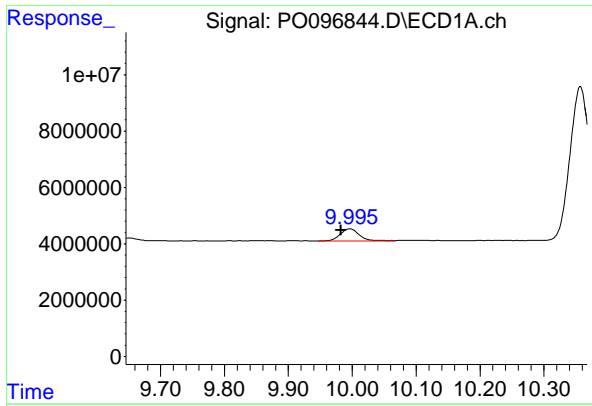
#44 AR-1268-4

R.T.: 9.556 min  
 Delta R.T.: 0.013 min  
 Response: 29407400  
 Conc: 317.19 ng/ml



#44 AR-1268-4

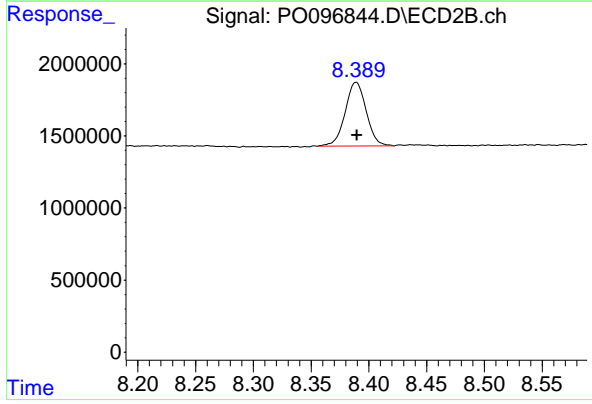
R.T.: 8.099 min  
 Delta R.T.: 0.000 min  
 Response: 19049758  
 Conc: 319.77 ng/ml



#45 AR-1268-5

R.T.: 9.996 min  
 Delta R.T.: 0.013 min  
 Response: 9052206  
 Conc: 11.21 ng/ml

Instrument :  
 ECD\_O  
 ClientSampleId :  
 AR1660CCC500



#45 AR-1268-5

R.T.: 8.389 min  
 Delta R.T.: 0.000 min  
 Response: 5654776  
 Conc: 13.60 ng/ml