

Data Path : Z:\pestpcbsrv\HPCHEM1\ECD_0\Data\P0080923\
 Data File : P0096867.D
 Signal(s) : Signal #1: ECD1A.ch Signal #2: ECD2B.ch
 Acq On : 09 Aug 2023 22:21
 Operator : YP/AJ
 Sample : 03931-03
 Misc :
 ALS Vial : 33 Sample Multiplier: 1

Instrument :
 ECD_0
 ClientSampleId :

Integration File signal 1: autoint1.e
 Integration File signal 2: autoint2.e
 Quant Time: Aug 10 01:37:46 2023
 Quant Method : Z:\pestpcbsrv\HPCHEM1\ECD_0\methods\P0080723.M
 Quant Title : GC EXTRACTABLES
 QLast Update : Tue Aug 08 04:34:41 2023
 Response via : Initial Calibration
 Integrator: ChemStation

Volume Inj. : 2 µl
 Signal #1 Phase : ZB-MR2 Signal #2 Phase: ZB-MR2
 Signal #1 Info : 30Mx0.32mmx 0.50µ Signal #2 Info : 30M x 0.32mm x 0.25µm

Compound	RT#1	RT#2	Resp#1	Resp#2	ng/ml	ng/ml
----------	------	------	--------	--------	-------	-------

System Monitoring Compounds

1) SA Tetrachlo...	4.411	3.619	56536095	23073710	17.079	17.430
2) SA Decachlor...	10.355	8.639	28002716	16393256	12.797	14.170

Target Compounds

3) L1 AR-1016-1	5.583	0.000	57511	0	0.611	N.D. #
4) L1 AR-1016-2	5.623	0.000	61820	0	0.462	N.D. #
5) L1 AR-1016-3	5.693	0.000	61324	0	0.705	N.D. #
6) L1 AR-1016-4	5.772	0.000	26837	0	0.400	N.D. #
7) L1 AR-1016-5	6.074	5.144	11330	340494	0.162	8.856 #
8) L2 AR-1221-1	4.622	0.000	1105249	0	27.119	N.D. #
9) L2 AR-1221-2	4.690	3.926	51148	611521	1.684	47.329 #
10) L2 AR-1221-3	4.773	3.976	39013	329497	0.446	8.301 #
11) L3 AR-1232-1	4.773	3.976	39013	329497	0.535	10.186 #
12) L3 AR-1232-2	5.334	0.000	271241	0	6.842	N.D. #
13) L3 AR-1232-3	5.623	0.000	61820	0	1.011	N.D. #
14) L3 AR-1232-4	5.772	0.000	26837	0	0.880	N.D. #
15) L3 AR-1232-5	5.855	5.144	11814	340494	0.422	20.829 #
16) L4 AR-1242-1	5.583	0.000	57511	0	0.686	N.D. #
17) L4 AR-1242-2	5.623	0.000	61820	0	0.525	N.D. #
18) L4 AR-1242-3	5.693	0.000	61324	0	0.830	N.D. #
19) L4 AR-1242-4	5.772	0.000	26837	0	0.451	N.D. #
20) L4 AR-1242-5	6.517	0.000	11238	0	0.204	N.D. #
21) L5 AR-1248-1	5.583	0.000	57511	0	0.982	N.D. #
22) L5 AR-1248-2	5.855	0.000	11814	0	0.126	N.D. #
23) L5 AR-1248-3	6.074	0.000	11330	0	0.116	N.D. #
24) L5 AR-1248-4	6.491	5.144	20526	340494	0.226	6.670 #
25) L5 AR-1248-5	6.517	5.600f	11238	1138835	0.128	24.359 #
26) L6 AR-1254-1	6.480	0.000	48617	0	0.445	N.D. #
27) L6 AR-1254-2	6.690	5.685	279093	201405	1.731	3.057 #
28) L6 AR-1254-3	7.070	0.000	1118616	0	7.139	N.D. #
29) L6 AR-1254-4	7.370	6.236f	298708	418998	2.963	7.240 #
30) L6 AR-1254-5	7.795	0.000	252439	0	2.250	N.D. #
31) L7 AR-1260-1	7.240	6.236f	536944	418998	4.272	5.954 #
32) L7 AR-1260-2	7.499	6.421f	85788	229240	0.637	2.747 #
33) L7 AR-1260-3	7.824f	0.000	30382	0	0.293	N.D. #
34) L7 AR-1260-4	8.087	6.992	2671969	367303	23.899	5.732 #
35) L7 AR-1260-5	8.439	7.223	83079	207859	0.396	1.499 #
36) L8 AR-1262-1	7.824f	6.849f	30382	577121	0.205	14.659 #
37) L8 AR-1262-2	8.439	6.992	83079	367303	0.359	4.529 #
38) L8 AR-1262-3	8.789	7.601f	546455	351532	3.276	5.478 #
39) L8 AR-1262-4	8.863	7.601	374853	351532	5.142	3.094 #
40) L8 AR-1262-5	9.537	0.000	333603	0	4.006	N.D. #
41) L9 AR-1268-1	8.789	7.601f	546455	351532	1.778	1.897

Data Path : Z:\pestpcbsrv\HPCHEM1\ECD_0\Data\P0080923\
 Data File : P0096867.D
 Signal(s) : Signal #1: ECD1A.ch Signal #2: ECD2B.ch
 Acq On : 09 Aug 2023 22:21
 Operator : YP/AJ
 Sample : 03931-03
 Misc :
 ALS Vial : 33 Sample Multiplier: 1

Instrument :
 ECD_0
 ClientSampleId :

Integration File signal 1: autoint1.e
 Integration File signal 2: autoint2.e
 Quant Time: Aug 10 01:37:46 2023
 Quant Method : Z:\pestpcbsrv\HPCHEM1\ECD_0\methods\P0080723.M
 Quant Title : GC EXTRACTABLES
 QLast Update : Tue Aug 08 04:34:41 2023
 Response via : Initial Calibration
 Integrator: ChemStation

Volume Inj. : 2 µl
 Signal #1 Phase : ZB-MR1 Signal #2 Phase: ZB-MR2
 Signal #1 Info : 30Mx0.32mmx 0.50µ Signal #2 Info : 30M x 0.32mm x 0.25µm

	Compound	RT#1	RT#2	Resp#1	Resp#2	ng/ml	ng/ml
42)	L9 AR-1268-2	8.863	7.601	374853	351532	1.367	2.096 #
43)	L9 AR-1268-3	9.094	7.821	253311	236588	0.992	1.638 #
44)	L9 AR-1268-4	9.537	0.000	333603	0	3.598	N.D. #
45)	L9 AR-1268-5	9.977	0.000	116816	0	0.145	N.D. #

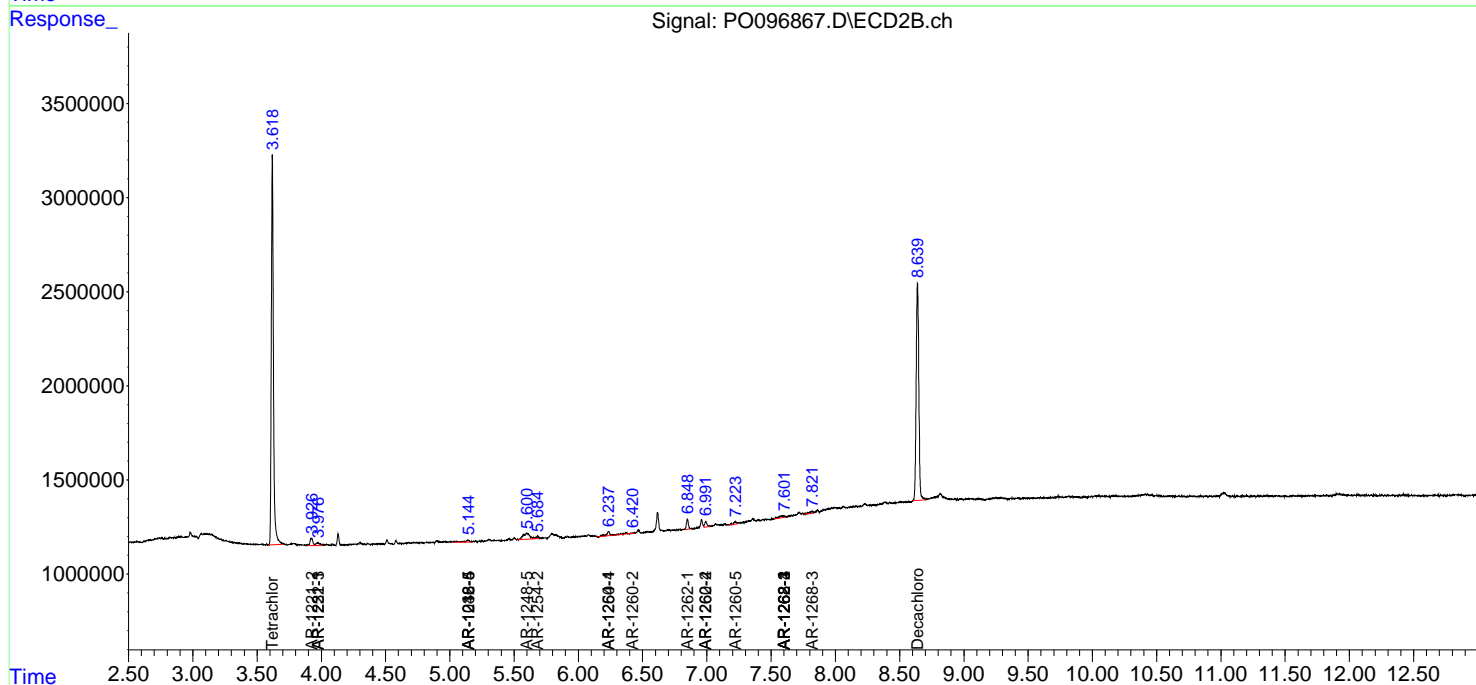
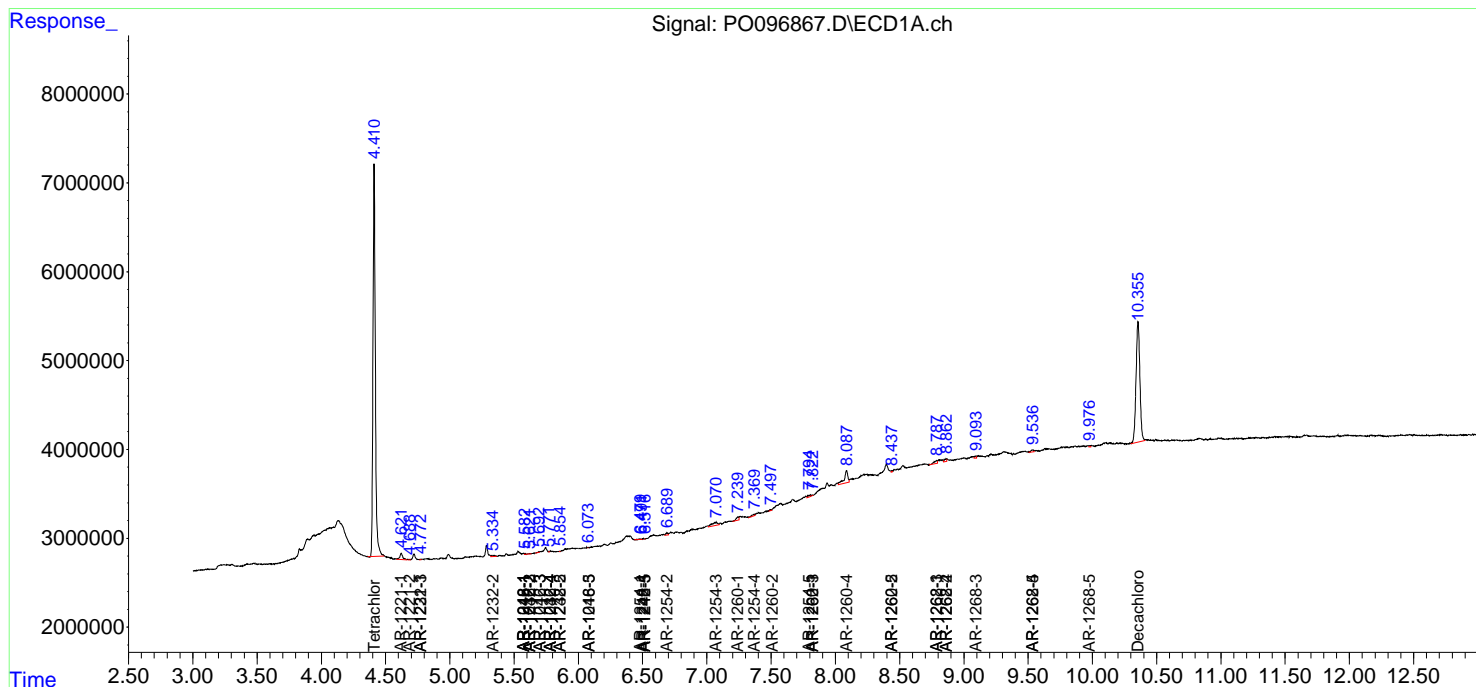
(f)=RT Delta > 1/2 Window (#)=Amounts differ by > 25% (m)=manual int.

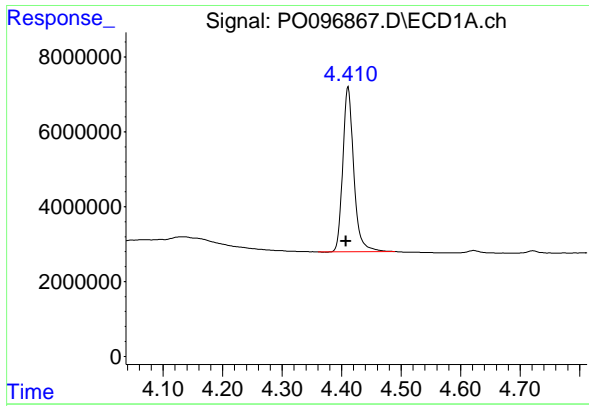
Data Path : Z:\pestpcbsrv\HPCHEM1\ECD_O\Data\PO080923\
 Data File : PO096867.D
 Signal(s) : Signal #1: ECD1A.ch Signal #2: ECD2B.ch
 Acq On : 09 Aug 2023 22:21
 Operator : YP/AJ
 Sample : 03931-03
 Misc :
 ALS Vial : 33 Sample Multiplier: 1

Instrument :
 ECD_O
 ClientSampleId :

Integration File signal 1: autoint1.e
 Integration File signal 2: autoint2.e
 Quant Time: Aug 10 01:37:46 2023
 Quant Method : Z:\pestpcbsrv\HPCHEM1\ECD_O\methods\PO080723.M
 Quant Title : GC EXTRACTABLES
 QLast Update : Tue Aug 08 04:34:41 2023
 Response via : Initial Calibration
 Integrator: ChemStation

Volume Inj. : 2 µl
 Signal #1 Phase : ZB-MR1 Signal #2 Phase: ZB-MR2
 Signal #1 Info : 30Mx0.32mmx 0.50µ Signal #2 Info : 30M x 0.32mm x 0.25µm

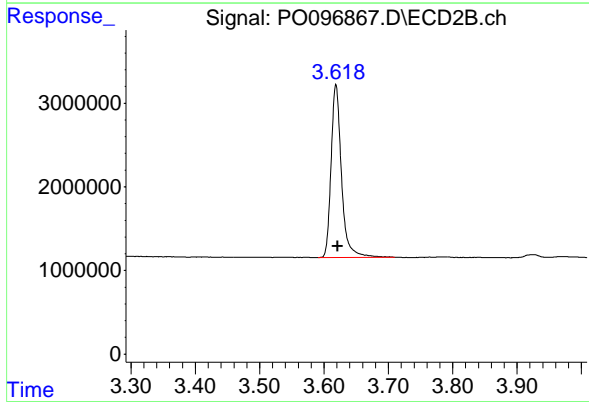




#1 Tetrachloro-m-xylene

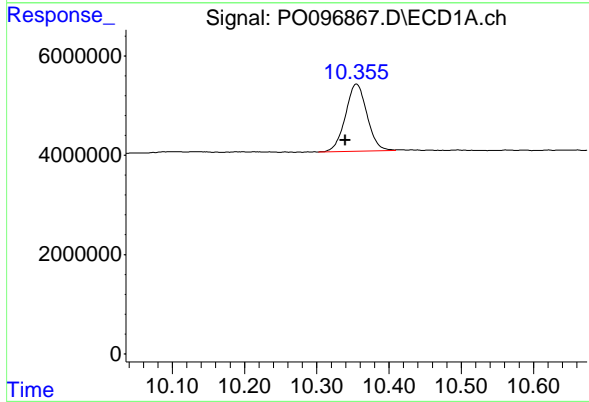
R.T.: 4.411 min
 Delta R.T.: 0.004 min
 Response: 56536095
 Conc: 17.08 ng/ml

Instrument :
 ECD_O
 ClientSampleId :



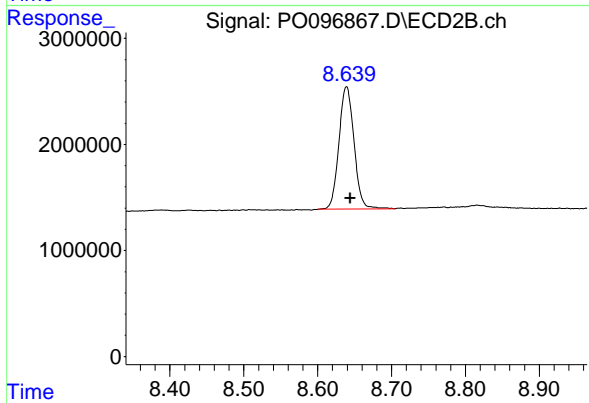
#1 Tetrachloro-m-xylene

R.T.: 3.619 min
 Delta R.T.: -0.003 min
 Response: 23073710
 Conc: 17.43 ng/ml



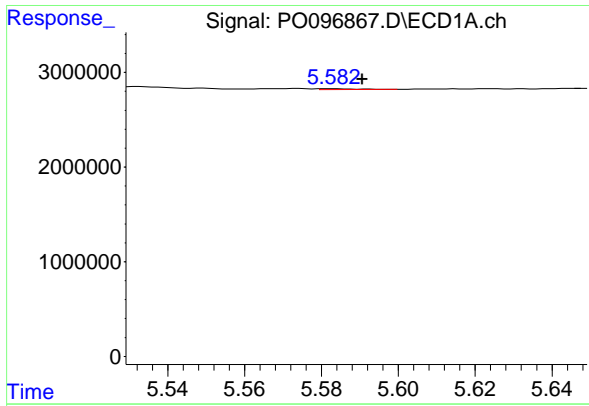
#2 Decachlorobiphenyl

R.T.: 10.355 min
 Delta R.T.: 0.016 min
 Response: 28002716
 Conc: 12.80 ng/ml



#2 Decachlorobiphenyl

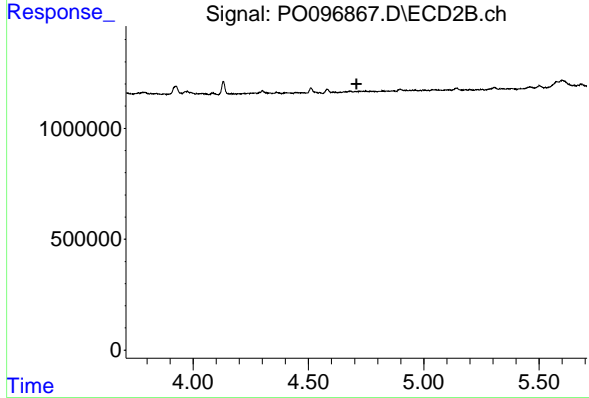
R.T.: 8.639 min
 Delta R.T.: -0.005 min
 Response: 16393256
 Conc: 14.17 ng/ml



#3 AR-1016-1

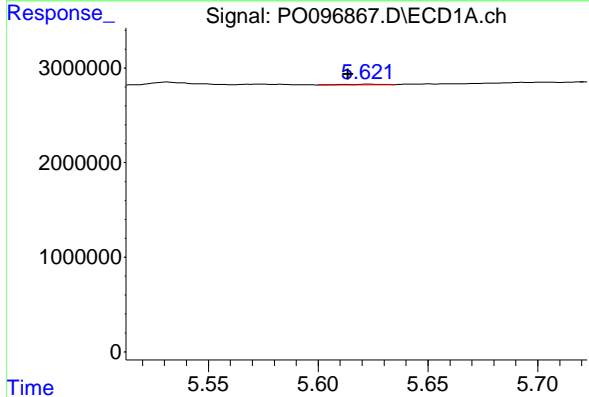
R.T.: 5.583 min
 Delta R.T.: -0.007 min
 Response: 57511
 Conc: 0.61 ng/ml

Instrument :
 ECD_O
 ClientSampleId :



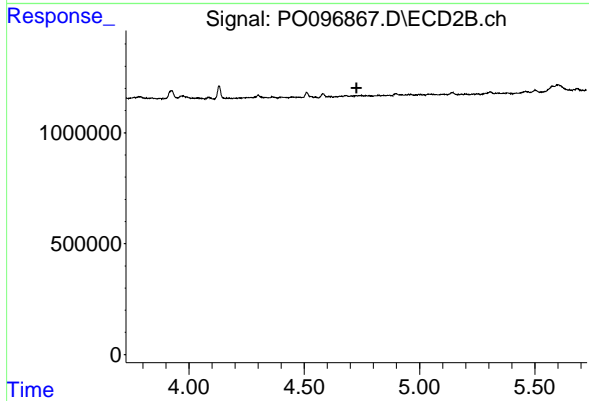
#3 AR-1016-1

R.T.: 0.000 min
 Exp R.T. : 4.708 min
 Response: 0
 Conc: N.D.



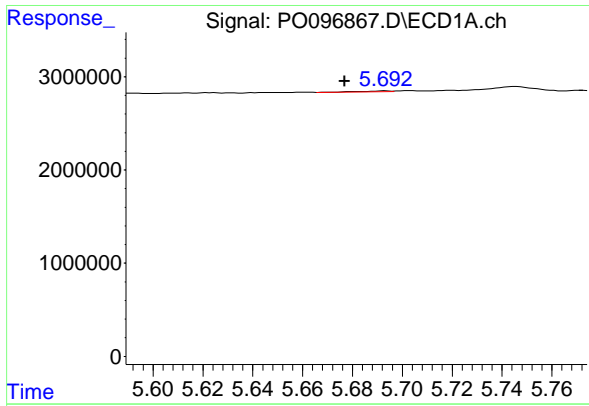
#4 AR-1016-2

R.T.: 5.623 min
 Delta R.T.: 0.010 min
 Response: 61820
 Conc: 0.46 ng/ml



#4 AR-1016-2

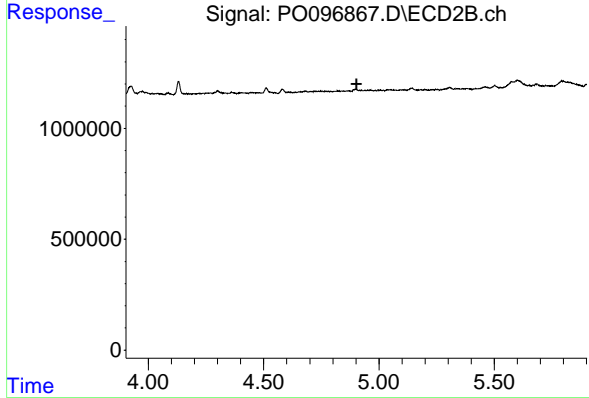
R.T.: 0.000 min
 Exp R.T. : 4.726 min
 Response: 0
 Conc: N.D.



#5 AR-1016-3

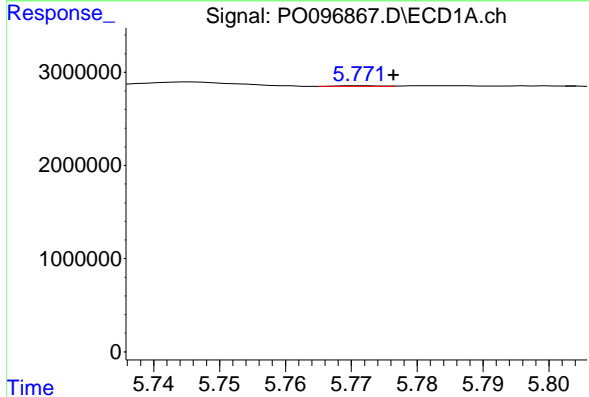
R.T.: 5.693 min
 Delta R.T.: 0.016 min
 Response: 61324
 Conc: 0.70 ng/ml

Instrument :
 ECD_O
 ClientSampleId :



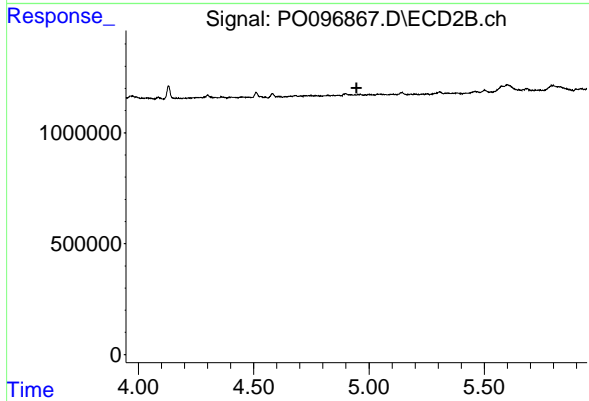
#5 AR-1016-3

R.T.: 0.000 min
 Exp R.T. : 4.903 min
 Response: 0
 Conc: N.D.



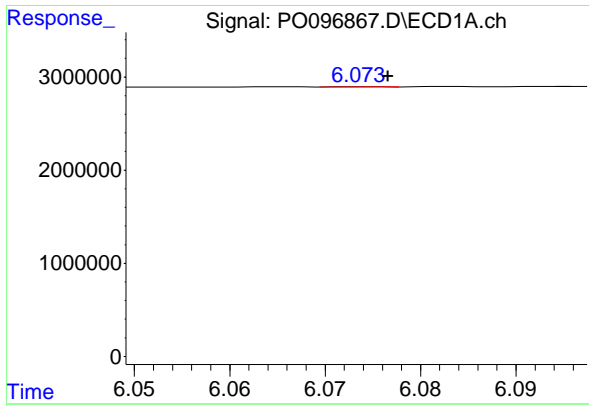
#6 AR-1016-4

R.T.: 5.772 min
 Delta R.T.: -0.005 min
 Response: 26837
 Conc: 0.40 ng/ml



#6 AR-1016-4

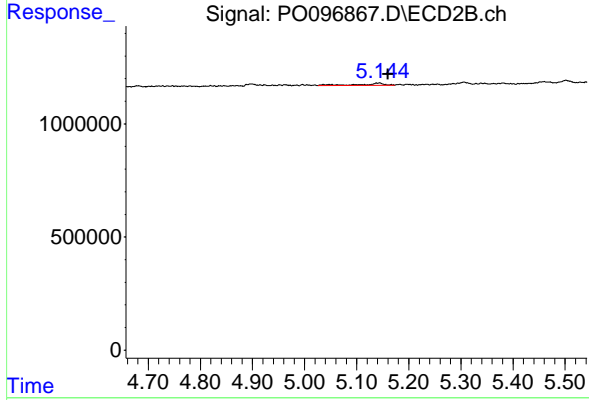
R.T.: 0.000 min
 Exp R.T. : 4.946 min
 Response: 0
 Conc: N.D.



#7 AR-1016-5

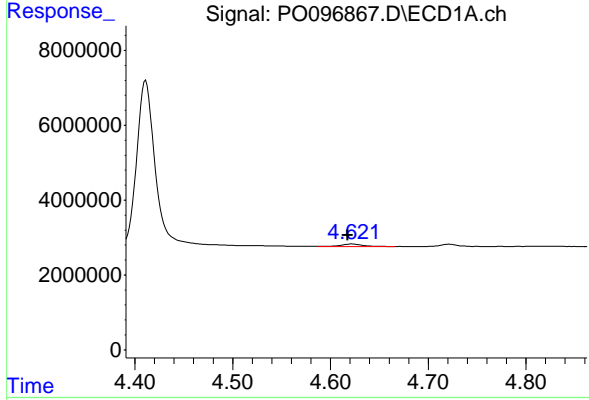
R.T.: 6.074 min
 Delta R.T.: -0.003 min
 Response: 11330
 Conc: 0.16 ng/ml

Instrument :
 ECD_O
 ClientSampleId :



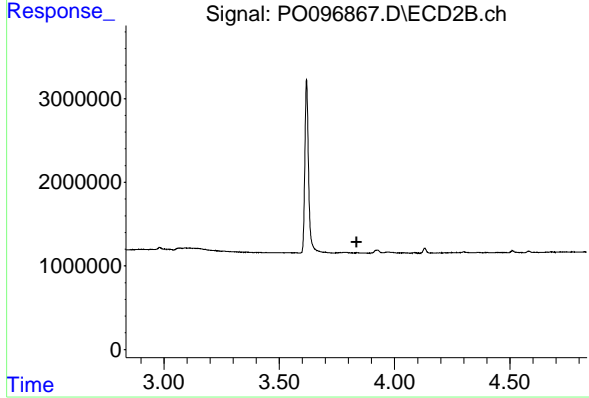
#7 AR-1016-5

R.T.: 5.144 min
 Delta R.T.: -0.016 min
 Response: 340494
 Conc: 8.86 ng/ml



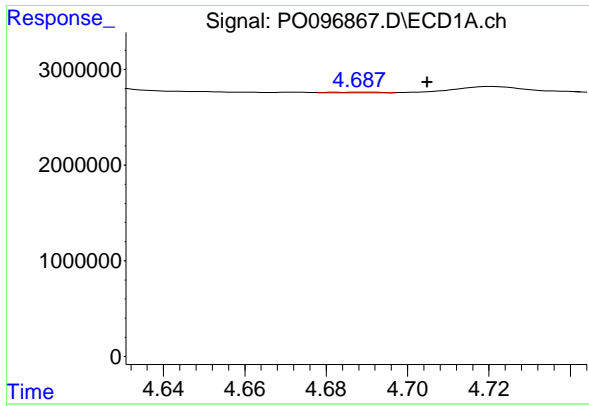
#8 AR-1221-1

R.T.: 4.622 min
 Delta R.T.: 0.004 min
 Response: 1105249
 Conc: 27.12 ng/ml



#8 AR-1221-1

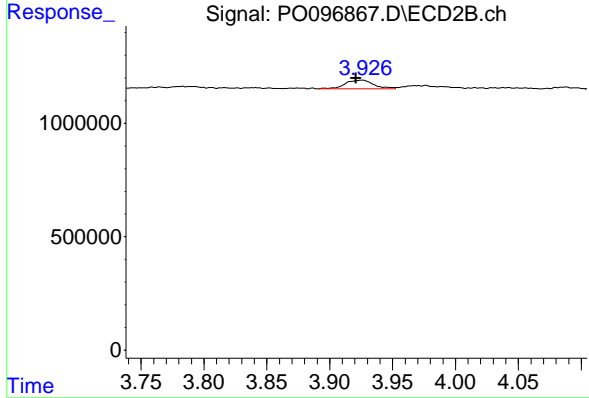
R.T.: 0.000 min
 Exp R.T. : 3.835 min
 Response: 0
 Conc: N.D.



#9 AR-1221-2

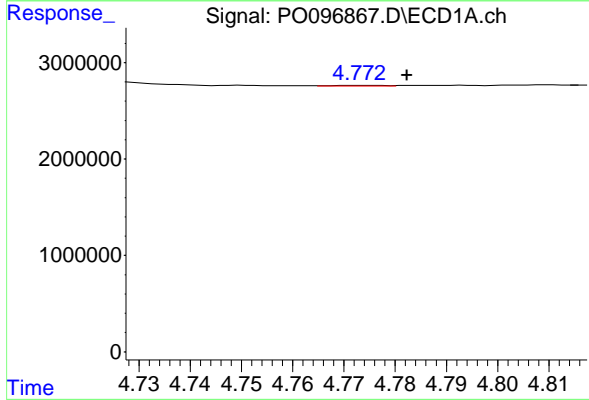
R.T.: 4.690 min
 Delta R.T.: -0.015 min
 Response: 51148
 Conc: 1.68 ng/ml

Instrument :
 ECD_O
 ClientSampleId :



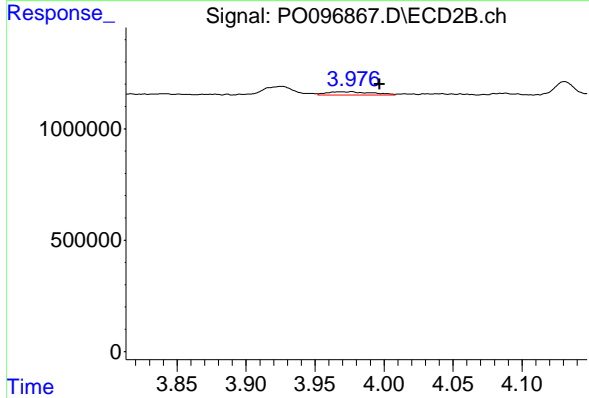
#9 AR-1221-2

R.T.: 3.926 min
 Delta R.T.: 0.005 min
 Response: 611521
 Conc: 47.33 ng/ml



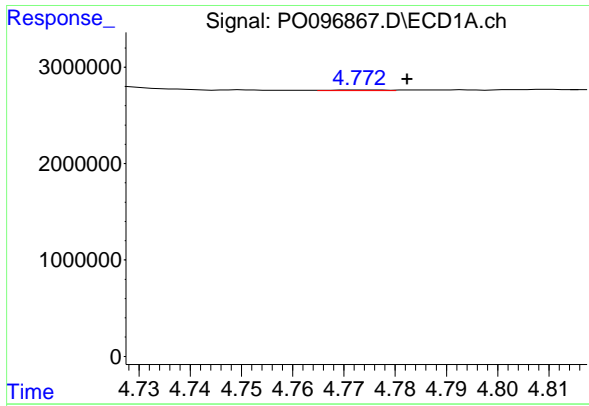
#10 AR-1221-3

R.T.: 4.773 min
 Delta R.T.: -0.009 min
 Response: 39013
 Conc: 0.45 ng/ml



#10 AR-1221-3

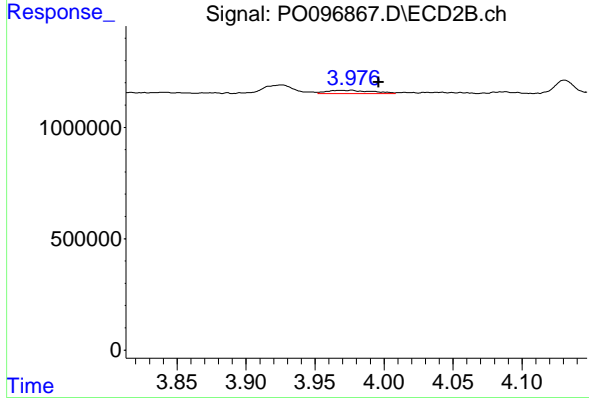
R.T.: 3.976 min
 Delta R.T.: -0.020 min
 Response: 329497
 Conc: 8.30 ng/ml



#11 AR-1232-1

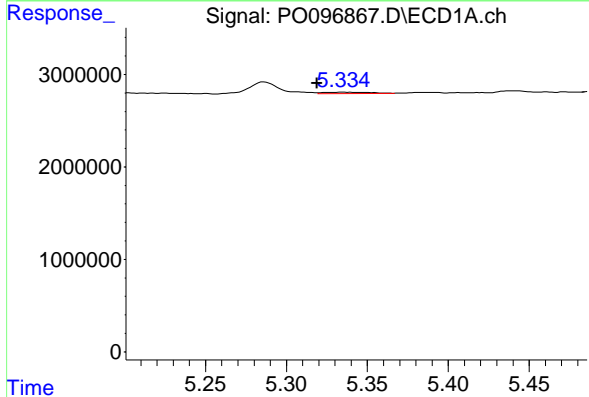
R.T.: 4.773 min
 Delta R.T.: -0.009 min
 Response: 39013
 Conc: 0.53 ng/ml

Instrument :
 ECD_O
 ClientSampleId :



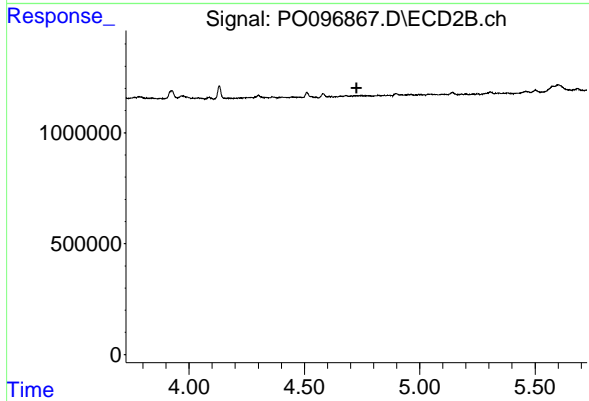
#11 AR-1232-1

R.T.: 3.976 min
 Delta R.T.: -0.020 min
 Response: 329497
 Conc: 10.19 ng/ml



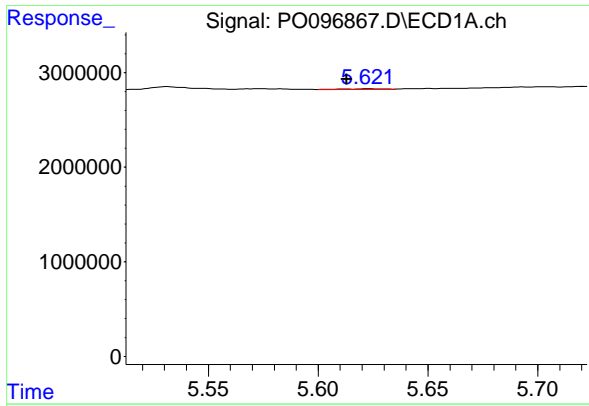
#12 AR-1232-2

R.T.: 5.334 min
 Delta R.T.: 0.015 min
 Response: 271241
 Conc: 6.84 ng/ml



#12 AR-1232-2

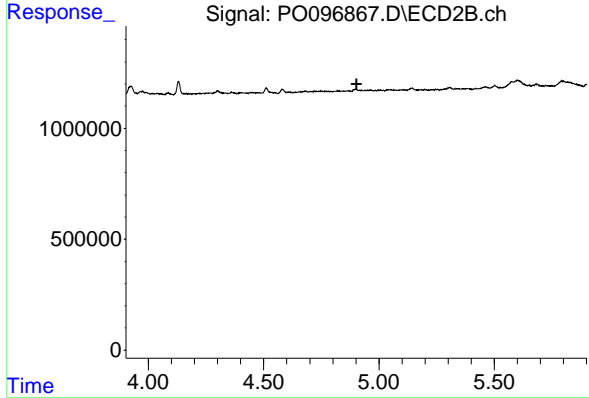
R.T.: 0.000 min
 Exp R.T. : 4.726 min
 Response: 0
 Conc: N.D.



#13 AR-1232-3

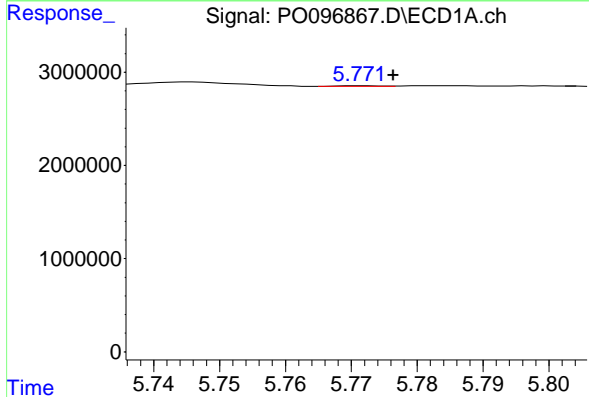
R.T.: 5.623 min
 Delta R.T.: 0.010 min
 Response: 61820
 Conc: 1.01 ng/ml

Instrument :
 ECD_O
 ClientSampleId :



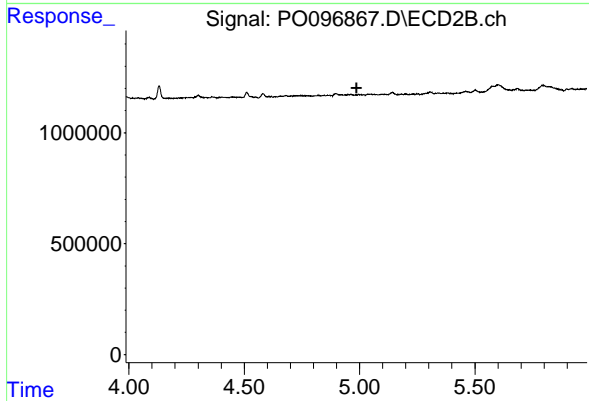
#13 AR-1232-3

R.T.: 0.000 min
 Exp R.T. : 4.902 min
 Response: 0
 Conc: N.D.



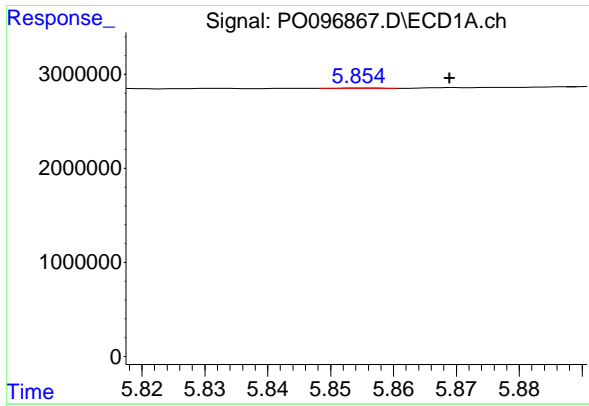
#14 AR-1232-4

R.T.: 5.772 min
 Delta R.T.: -0.005 min
 Response: 26837
 Conc: 0.88 ng/ml



#14 AR-1232-4

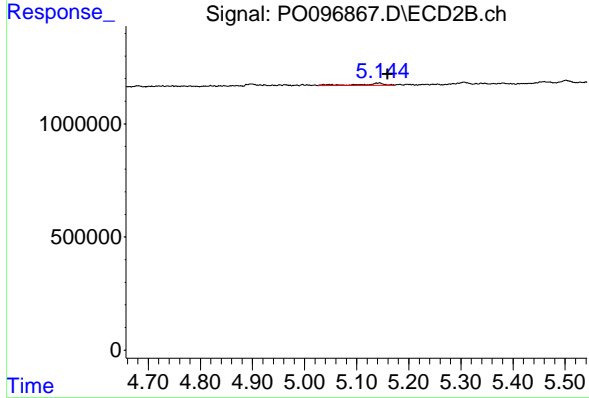
R.T.: 0.000 min
 Exp R.T. : 4.987 min
 Response: 0
 Conc: N.D.



#15 AR-1232-5

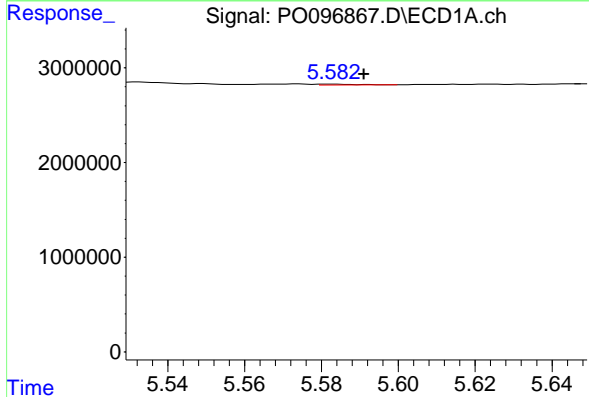
R.T.: 5.855 min
 Delta R.T.: -0.014 min
 Response: 11814
 Conc: 0.42 ng/ml

Instrument :
 ECD_O
 ClientSampleId :



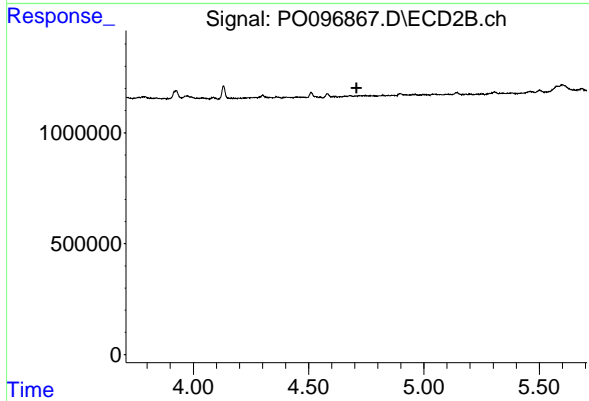
#15 AR-1232-5

R.T.: 5.144 min
 Delta R.T.: -0.015 min
 Response: 340494
 Conc: 20.83 ng/ml



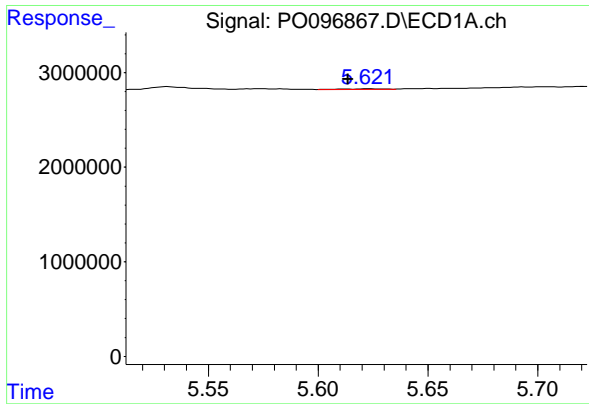
#16 AR-1242-1

R.T.: 5.583 min
 Delta R.T.: -0.008 min
 Response: 57511
 Conc: 0.69 ng/ml



#16 AR-1242-1

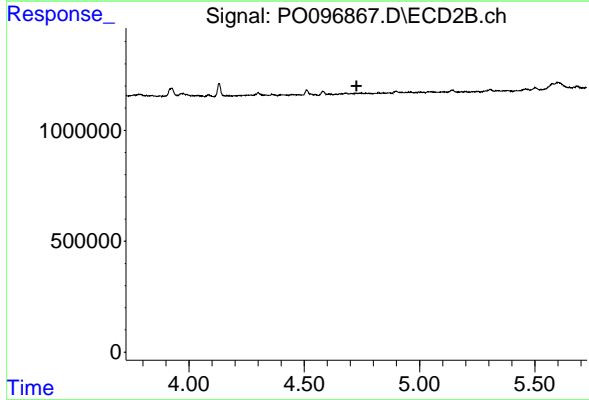
R.T.: 0.000 min
 Exp R.T. : 4.708 min
 Response: 0
 Conc: N.D.



#17 AR-1242-2

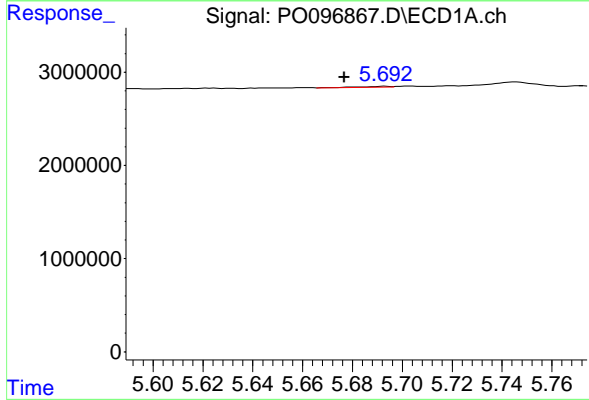
R.T.: 5.623 min
 Delta R.T.: 0.010 min
 Response: 61820
 Conc: 0.52 ng/ml

Instrument :
 ECD_O
 ClientSampleId :



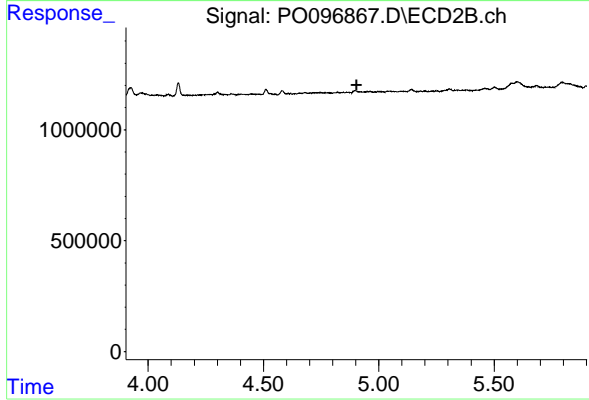
#17 AR-1242-2

R.T.: 0.000 min
 Exp R.T. : 4.727 min
 Response: 0
 Conc: N.D.



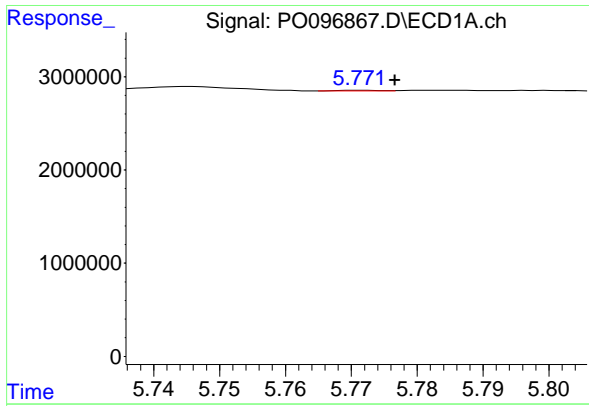
#18 AR-1242-3

R.T.: 5.693 min
 Delta R.T.: 0.016 min
 Response: 61324
 Conc: 0.83 ng/ml



#18 AR-1242-3

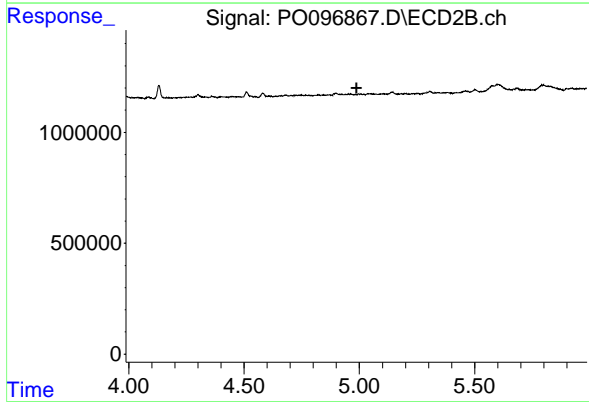
R.T.: 0.000 min
 Exp R.T. : 4.903 min
 Response: 0
 Conc: N.D.



#19 AR-1242-4

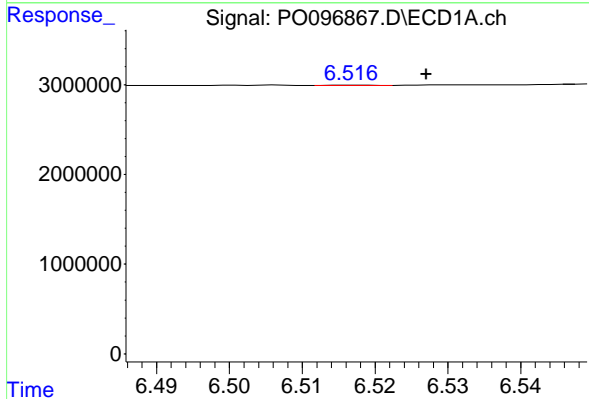
R.T.: 5.772 min
 Delta R.T.: -0.005 min
 Response: 26837
 Conc: 0.45 ng/ml

Instrument :
 ECD_O
 ClientSampleId :



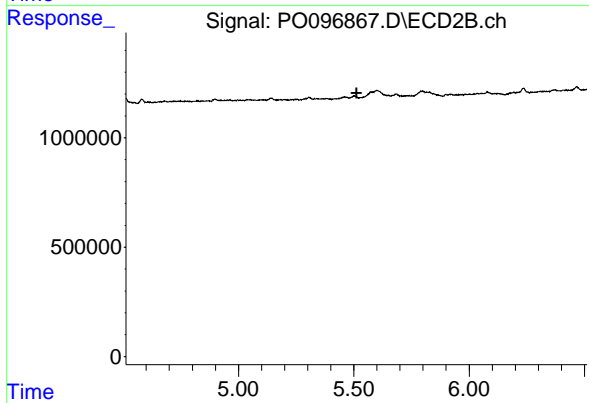
#19 AR-1242-4

R.T.: 0.000 min
 Exp R.T. : 4.987 min
 Response: 0
 Conc: N.D.



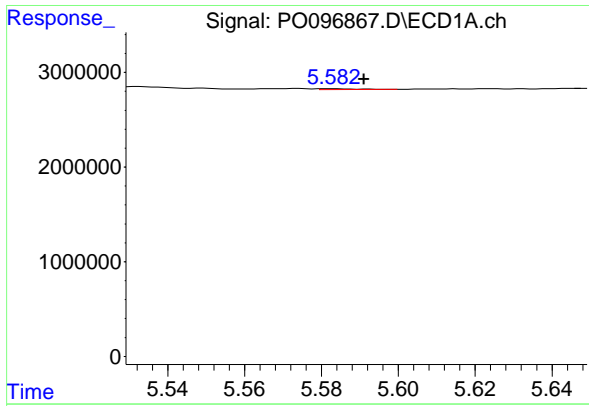
#20 AR-1242-5

R.T.: 6.517 min
 Delta R.T.: -0.010 min
 Response: 11238
 Conc: 0.20 ng/ml



#20 AR-1242-5

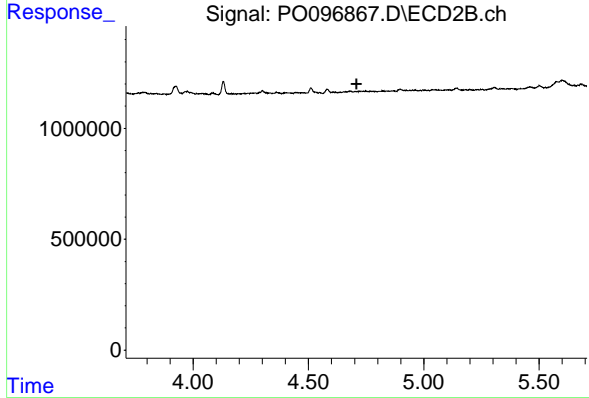
R.T.: 0.000 min
 Exp R.T. : 5.512 min
 Response: 0
 Conc: N.D.



#21 AR-1248-1

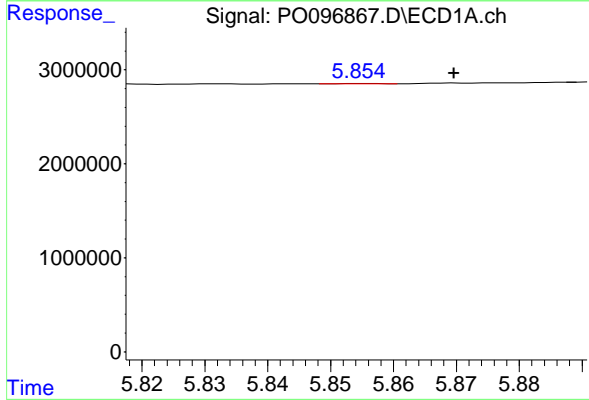
R.T.: 5.583 min
 Delta R.T.: -0.008 min
 Response: 57511
 Conc: 0.98 ng/ml

Instrument :
 ECD_O
 ClientSampleId :



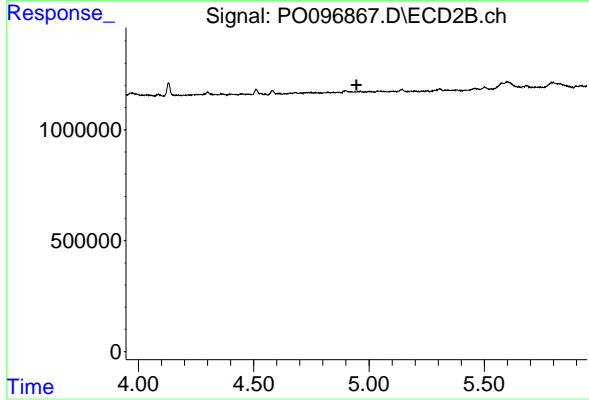
#21 AR-1248-1

R.T.: 0.000 min
 Exp R.T. : 4.708 min
 Response: 0
 Conc: N.D.



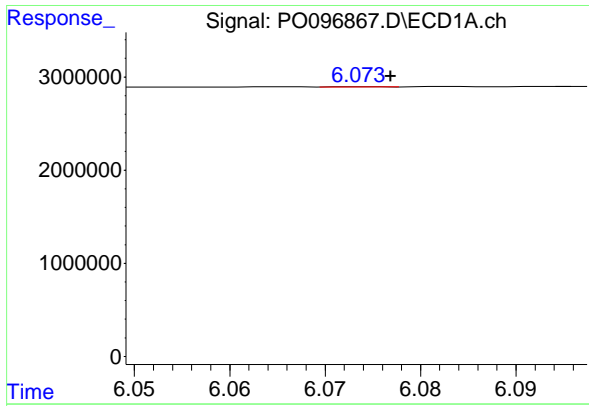
#22 AR-1248-2

R.T.: 5.855 min
 Delta R.T.: -0.015 min
 Response: 11814
 Conc: 0.13 ng/ml



#22 AR-1248-2

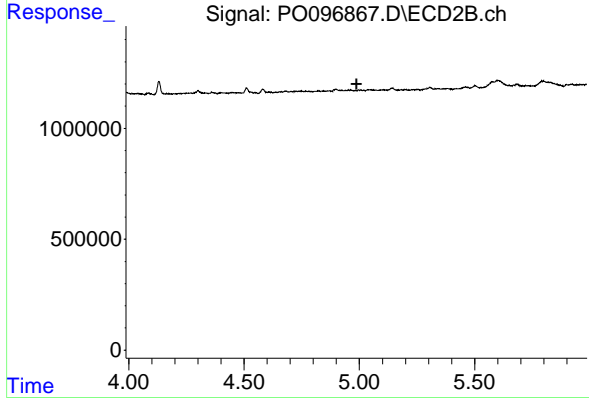
R.T.: 0.000 min
 Exp R.T. : 4.946 min
 Response: 0
 Conc: N.D.



#23 AR-1248-3

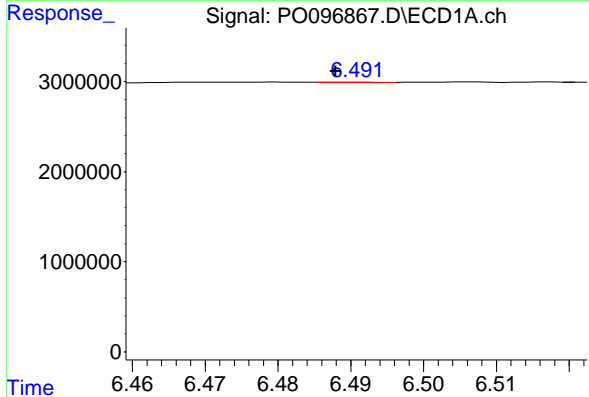
R.T.: 6.074 min
 Delta R.T.: -0.003 min
 Response: 11330
 Conc: 0.12 ng/ml

Instrument :
 ECD_O
 ClientSampleId :



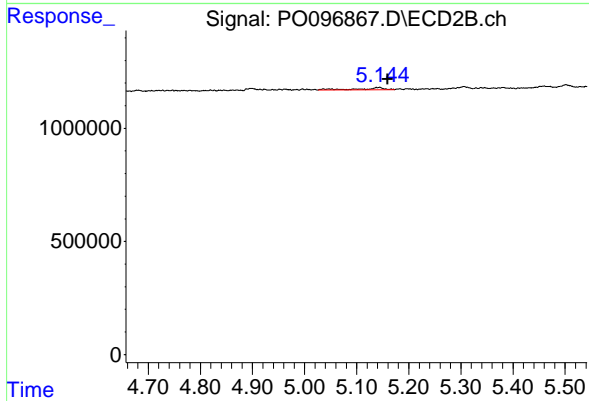
#23 AR-1248-3

R.T.: 0.000 min
 Exp R.T. : 4.987 min
 Response: 0
 Conc: N.D.



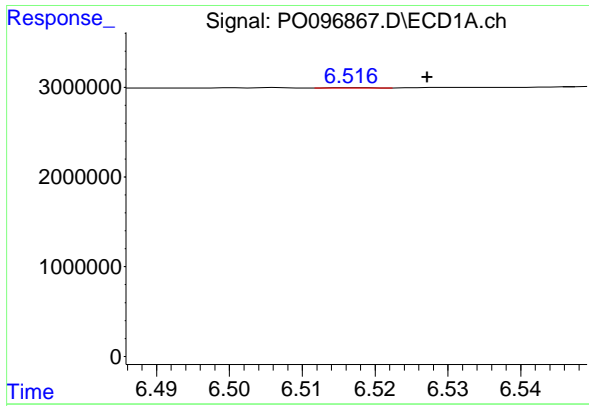
#24 AR-1248-4

R.T.: 6.491 min
 Delta R.T.: 0.003 min
 Response: 20526
 Conc: 0.23 ng/ml



#24 AR-1248-4

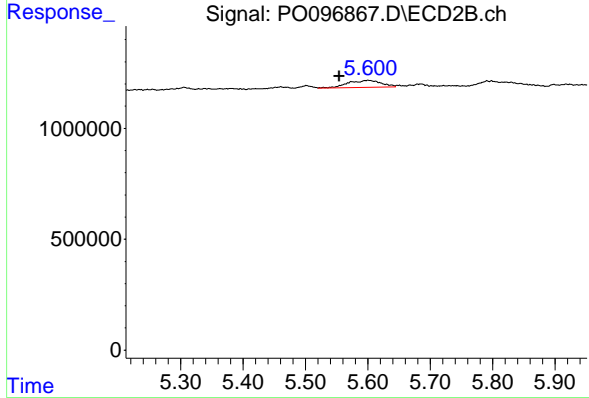
R.T.: 5.144 min
 Delta R.T.: -0.015 min
 Response: 340494
 Conc: 6.67 ng/ml



#25 AR-1248-5

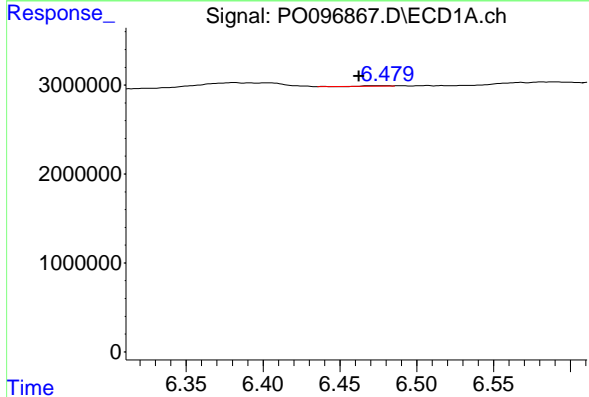
R.T.: 6.517 min
 Delta R.T.: -0.010 min
 Response: 11238
 Conc: 0.13 ng/ml

Instrument :
 ECD_O
 ClientSampleId :



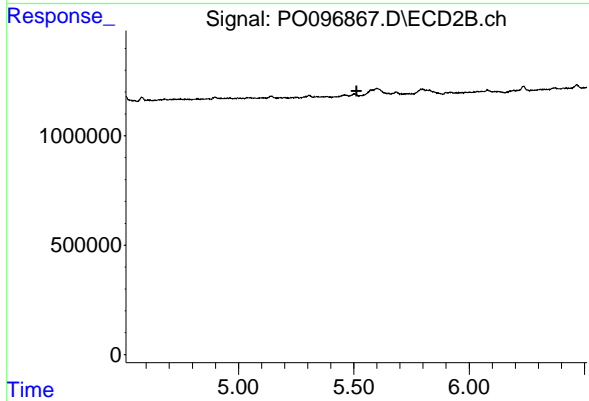
#25 AR-1248-5

R.T.: 5.600 min
 Delta R.T.: 0.047 min
 Response: 1138835
 Conc: 24.36 ng/ml



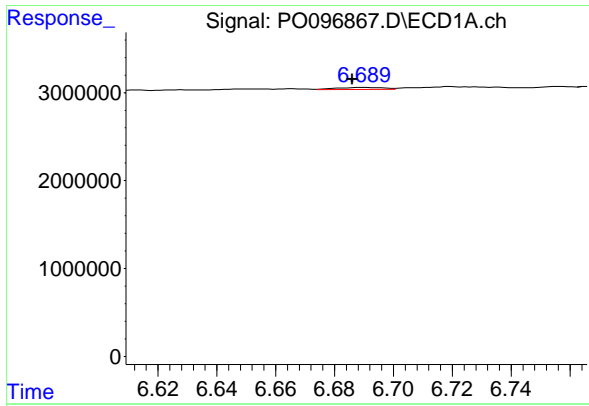
#26 AR-1254-1

R.T.: 6.480 min
 Delta R.T.: 0.018 min
 Response: 48617
 Conc: 0.44 ng/ml



#26 AR-1254-1

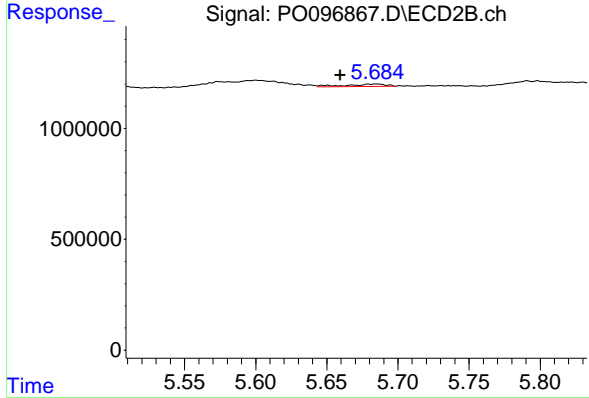
R.T.: 0.000 min
 Exp R.T. : 5.511 min
 Response: 0
 Conc: N.D.



#27 AR-1254-2

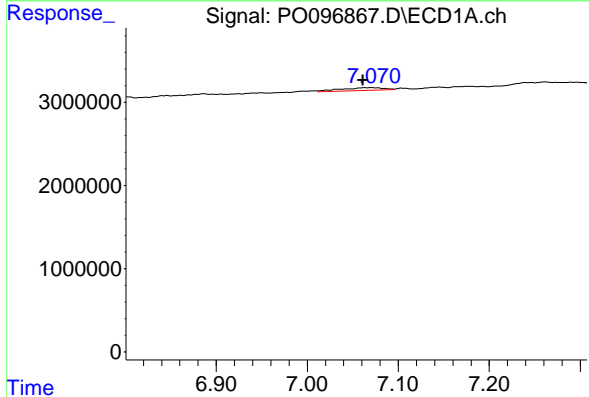
R.T.: 6.690 min
 Delta R.T.: 0.004 min
 Response: 279093
 Conc: 1.73 ng/ml

Instrument :
 ECD_O
 ClientSampleId :



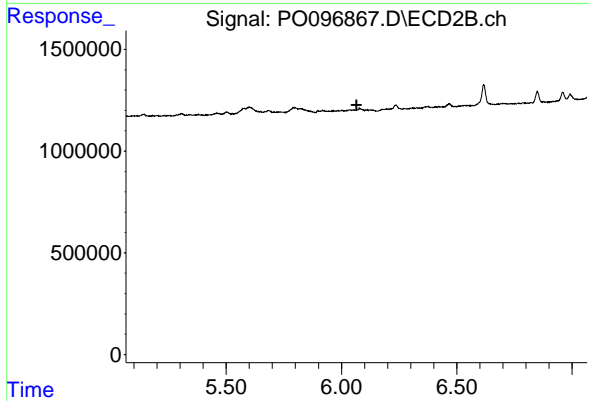
#27 AR-1254-2

R.T.: 5.685 min
 Delta R.T.: 0.026 min
 Response: 201405
 Conc: 3.06 ng/ml



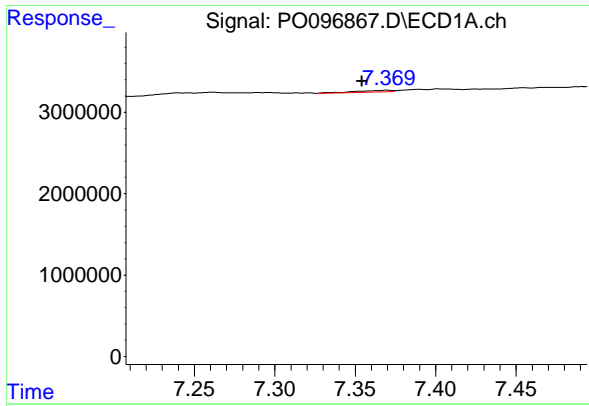
#28 AR-1254-3

R.T.: 7.070 min
 Delta R.T.: 0.009 min
 Response: 1118616
 Conc: 7.14 ng/ml



#28 AR-1254-3

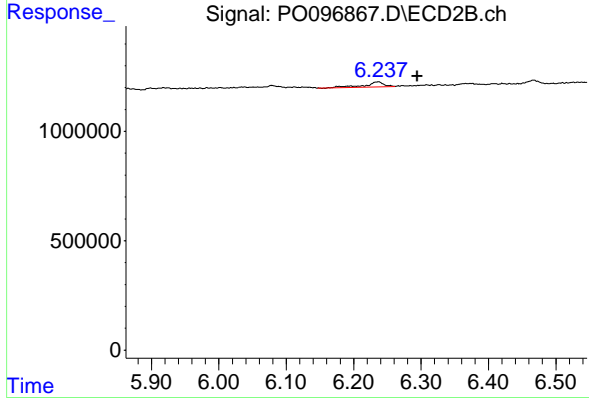
R.T.: 0.000 min
 Exp R.T. : 6.065 min
 Response: 0
 Conc: N.D.



#29 AR-1254-4

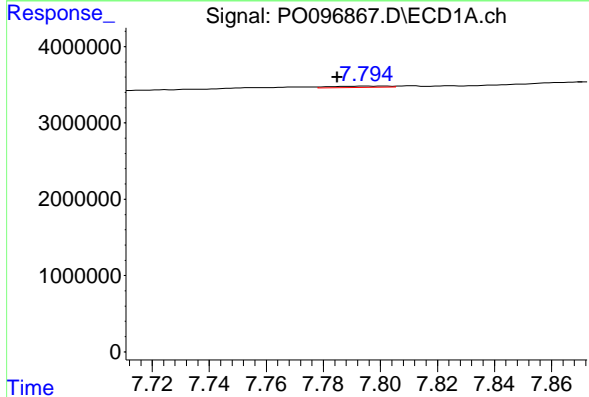
R.T.: 7.370 min
 Delta R.T.: 0.016 min
 Response: 298708
 Conc: 2.96 ng/ml

Instrument :
 ECD_O
 ClientSampleId :



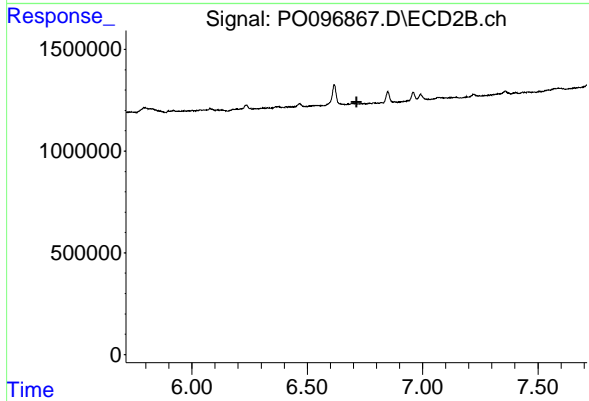
#29 AR-1254-4

R.T.: 6.236 min
 Delta R.T.: -0.058 min
 Response: 418998
 Conc: 7.24 ng/ml



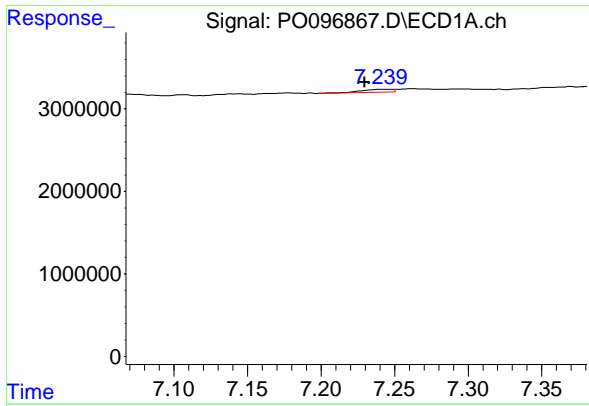
#30 AR-1254-5

R.T.: 7.795 min
 Delta R.T.: 0.010 min
 Response: 252439
 Conc: 2.25 ng/ml



#30 AR-1254-5

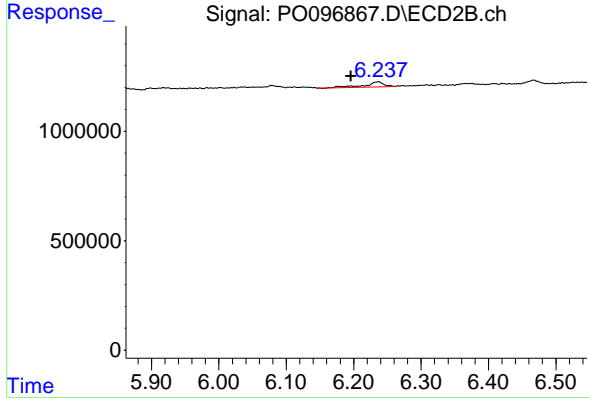
R.T.: 0.000 min
 Exp R.T. : 6.713 min
 Response: 0
 Conc: N.D.



#31 AR-1260-1

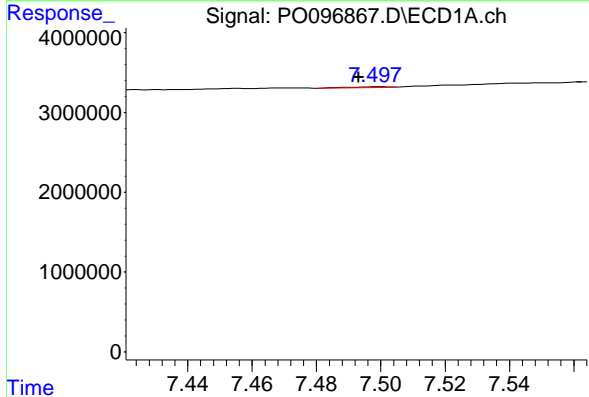
R.T.: 7.240 min
 Delta R.T.: 0.010 min
 Response: 536944
 Conc: 4.27 ng/ml

Instrument :
 ECD_O
 ClientSampleId :



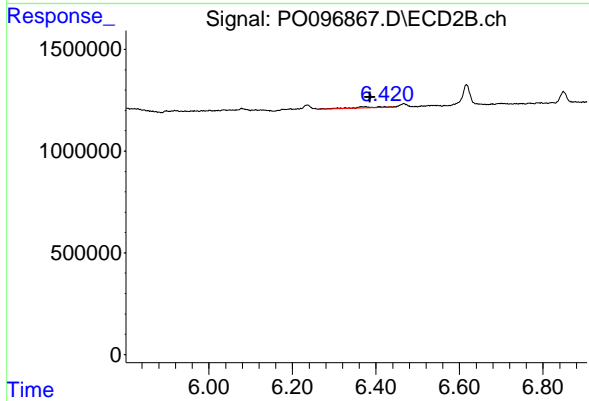
#31 AR-1260-1

R.T.: 6.236 min
 Delta R.T.: 0.040 min
 Response: 418998
 Conc: 5.95 ng/ml



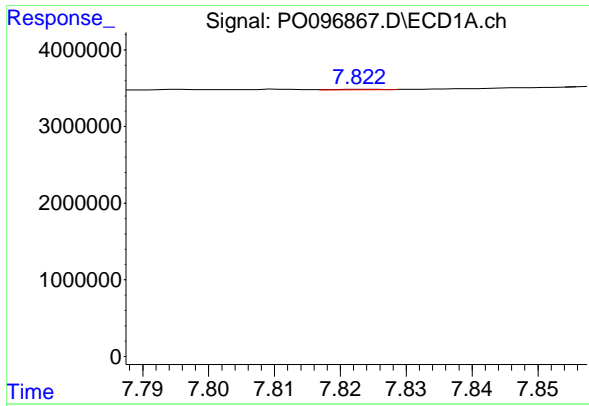
#32 AR-1260-2

R.T.: 7.499 min
 Delta R.T.: 0.006 min
 Response: 85788
 Conc: 0.64 ng/ml



#32 AR-1260-2

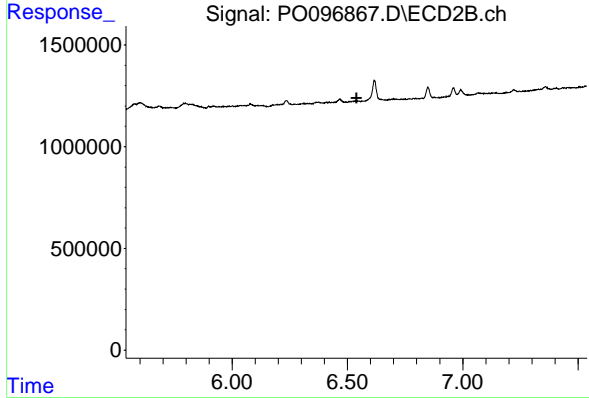
R.T.: 6.421 min
 Delta R.T.: 0.035 min
 Response: 229240
 Conc: 2.75 ng/ml



#33 AR-1260-3

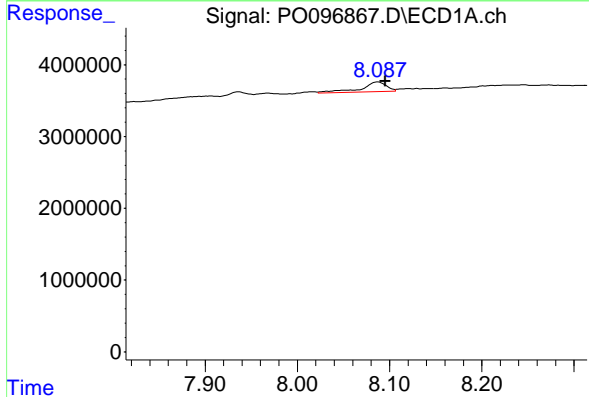
R.T.: 7.824 min
 Delta R.T.: -0.040 min
 Response: 30382
 Conc: 0.29 ng/ml

Instrument :
 ECD_O
 ClientSampleId :



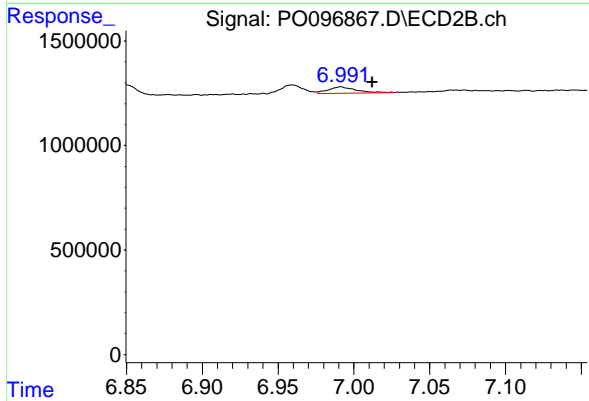
#33 AR-1260-3

R.T.: 0.000 min
 Exp R.T. : 6.539 min
 Response: 0
 Conc: N.D.



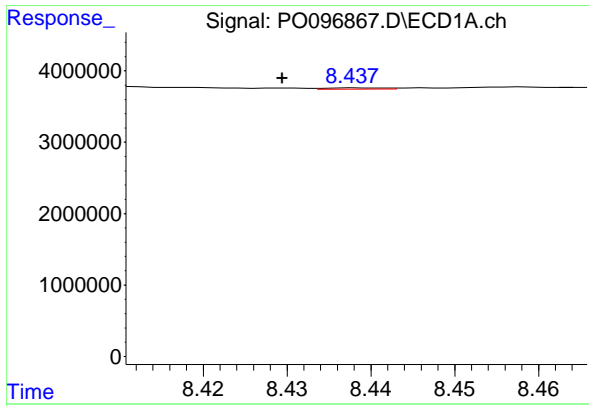
#34 AR-1260-4

R.T.: 8.087 min
 Delta R.T.: -0.008 min
 Response: 2671969
 Conc: 23.90 ng/ml



#34 AR-1260-4

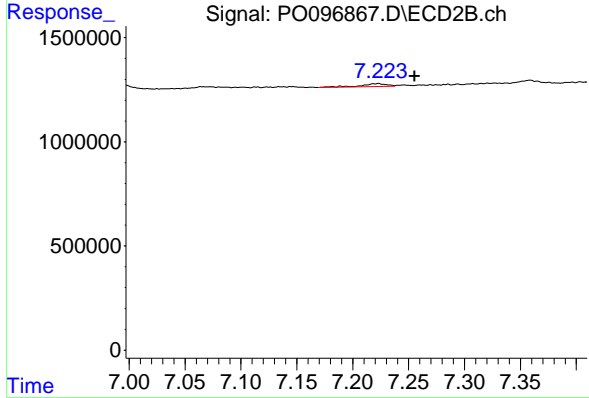
R.T.: 6.992 min
 Delta R.T.: -0.021 min
 Response: 367303
 Conc: 5.73 ng/ml



#35 AR-1260-5

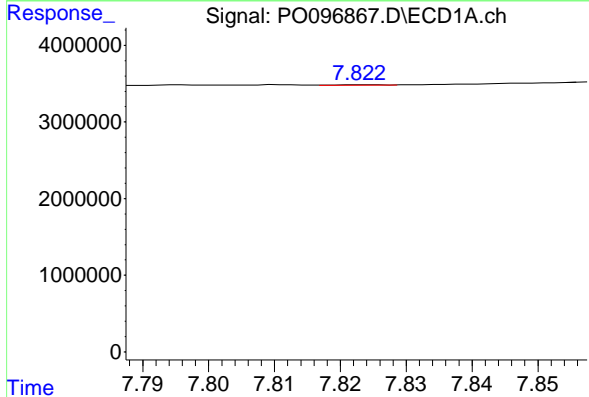
R.T.: 8.439 min
 Delta R.T.: 0.009 min
 Response: 83079
 Conc: 0.40 ng/ml

Instrument :
 ECD_O
 ClientSampleId :



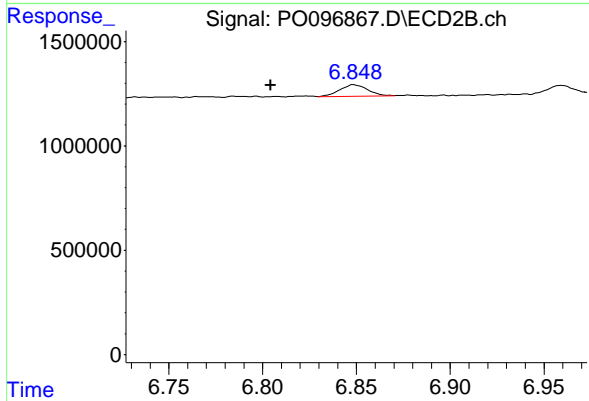
#35 AR-1260-5

R.T.: 7.223 min
 Delta R.T.: -0.033 min
 Response: 207859
 Conc: 1.50 ng/ml



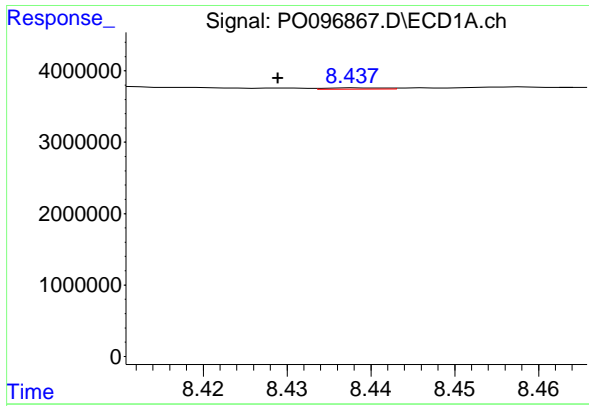
#36 AR-1262-1

R.T.: 7.824 min
 Delta R.T.: -0.039 min
 Response: 30382
 Conc: 0.20 ng/ml



#36 AR-1262-1

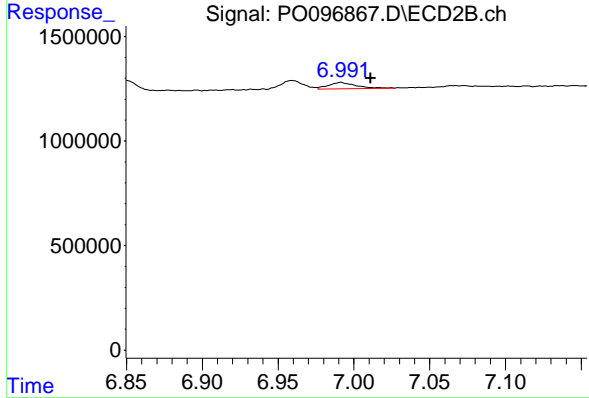
R.T.: 6.849 min
 Delta R.T.: 0.044 min
 Response: 577121
 Conc: 14.66 ng/ml



#37 AR-1262-2

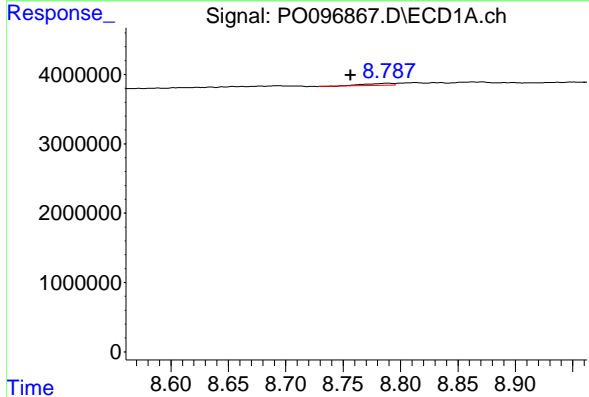
R.T.: 8.439 min
 Delta R.T.: 0.010 min
 Response: 83079
 Conc: 0.36 ng/ml

Instrument :
 ECD_O
 ClientSampleId :



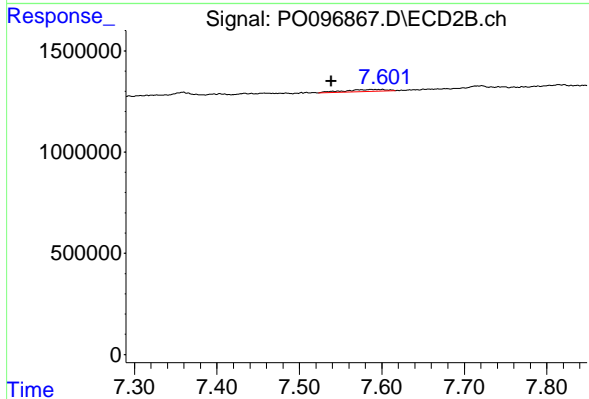
#37 AR-1262-2

R.T.: 6.992 min
 Delta R.T.: -0.020 min
 Response: 367303
 Conc: 4.53 ng/ml



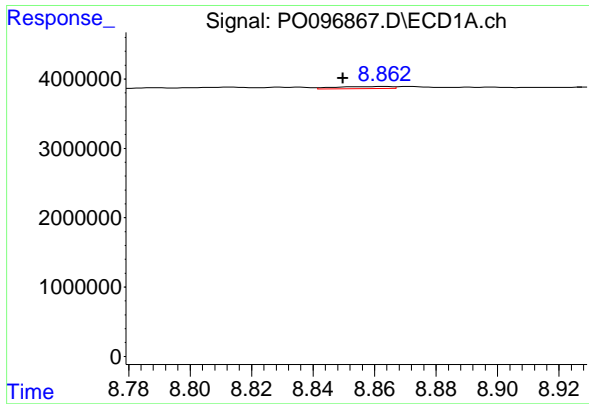
#38 AR-1262-3

R.T.: 8.789 min
 Delta R.T.: 0.032 min
 Response: 546455
 Conc: 3.28 ng/ml



#38 AR-1262-3

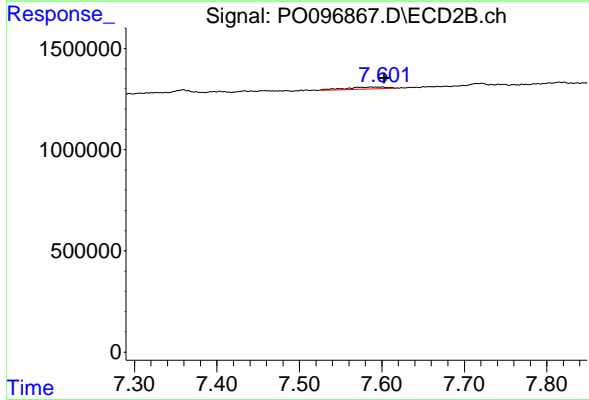
R.T.: 7.601 min
 Delta R.T.: 0.062 min
 Response: 351532
 Conc: 5.48 ng/ml



#39 AR-1262-4

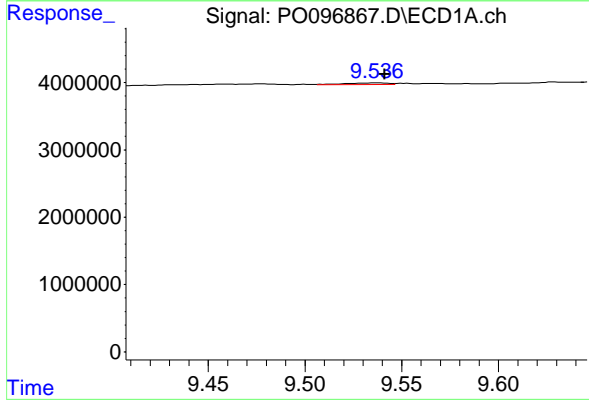
R.T.: 8.863 min
 Delta R.T.: 0.013 min
 Response: 374853
 Conc: 5.14 ng/ml

Instrument :
 ECD_O
 ClientSampleId :



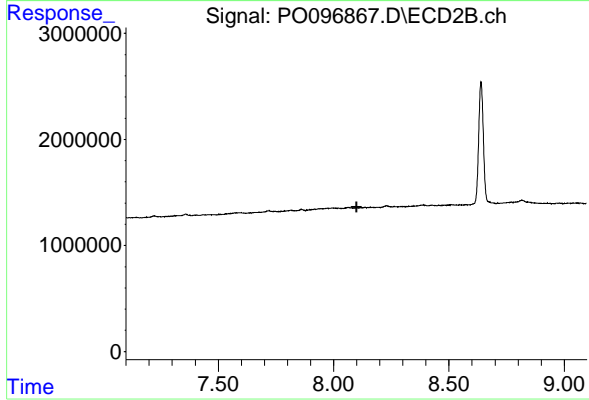
#39 AR-1262-4

R.T.: 7.601 min
 Delta R.T.: -0.002 min
 Response: 351532
 Conc: 3.09 ng/ml



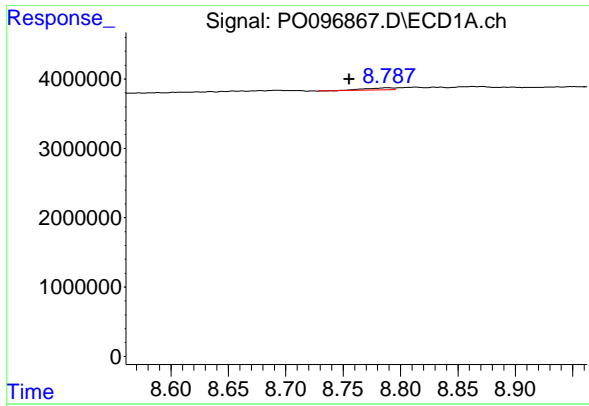
#40 AR-1262-5

R.T.: 9.537 min
 Delta R.T.: -0.004 min
 Response: 333603
 Conc: 4.01 ng/ml



#40 AR-1262-5

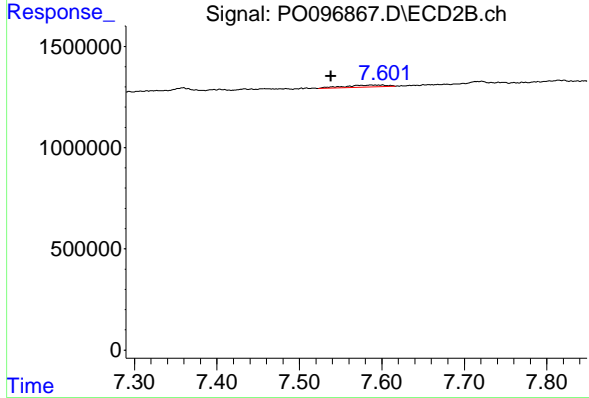
R.T.: 0.000 min
 Exp R.T. : 8.099 min
 Response: 0
 Conc: N.D.



#41 AR-1268-1

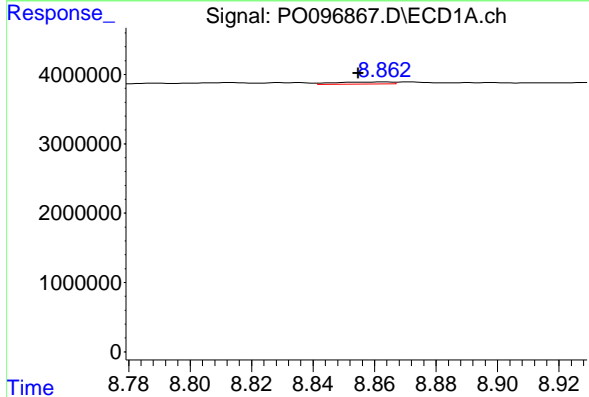
R.T.: 8.789 min
 Delta R.T.: 0.033 min
 Response: 546455
 Conc: 1.78 ng/ml

Instrument :
 ECD_O
 ClientSampleId :



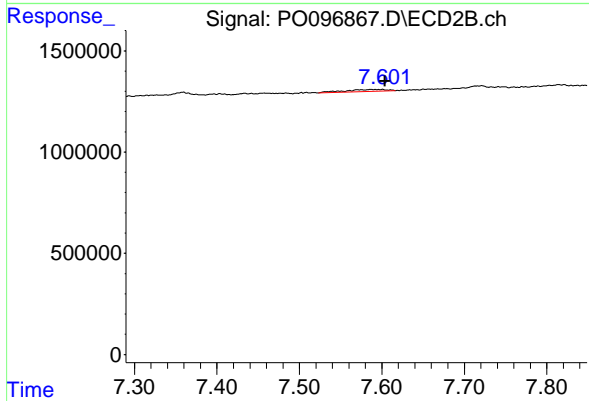
#41 AR-1268-1

R.T.: 7.601 min
 Delta R.T.: 0.063 min
 Response: 351532
 Conc: 1.90 ng/ml



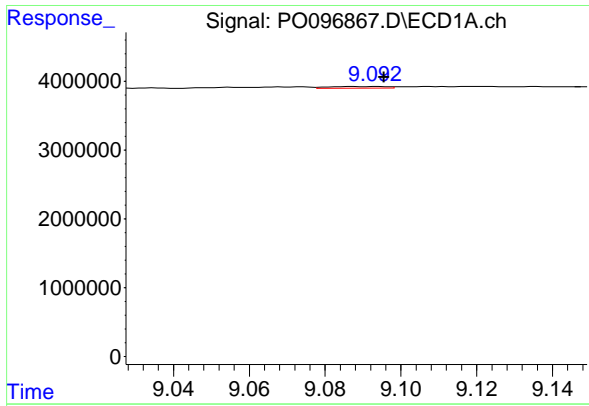
#42 AR-1268-2

R.T.: 8.863 min
 Delta R.T.: 0.009 min
 Response: 374853
 Conc: 1.37 ng/ml



#42 AR-1268-2

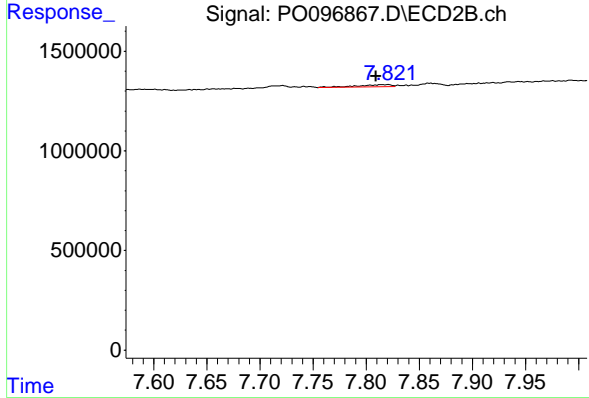
R.T.: 7.601 min
 Delta R.T.: -0.003 min
 Response: 351532
 Conc: 2.10 ng/ml



#43 AR-1268-3

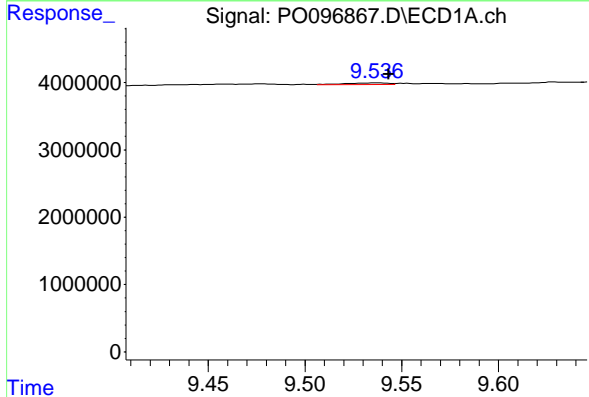
R.T.: 9.094 min
 Delta R.T.: -0.002 min
 Response: 253311
 Conc: 0.99 ng/ml

Instrument :
 ECD_O
 ClientSampleId :



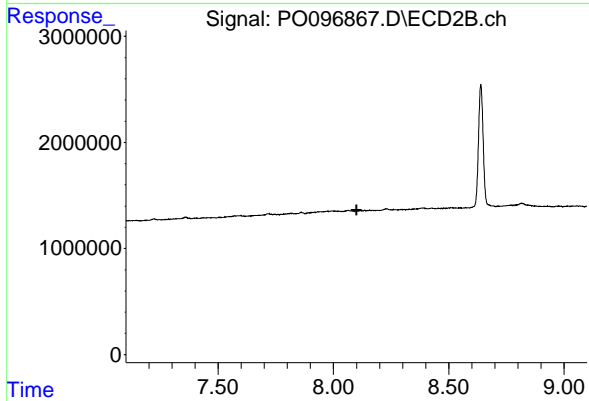
#43 AR-1268-3

R.T.: 7.821 min
 Delta R.T.: 0.012 min
 Response: 236588
 Conc: 1.64 ng/ml



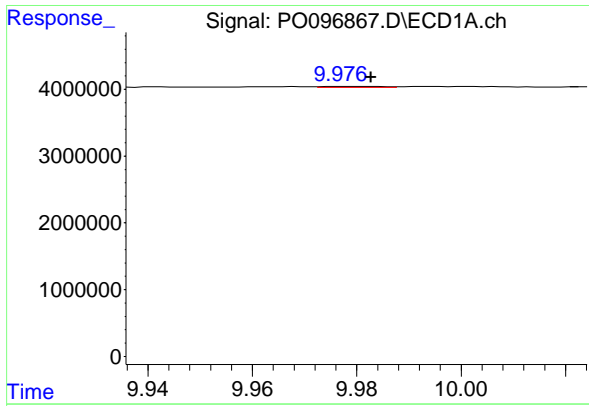
#44 AR-1268-4

R.T.: 9.537 min
 Delta R.T.: -0.006 min
 Response: 333603
 Conc: 3.60 ng/ml



#44 AR-1268-4

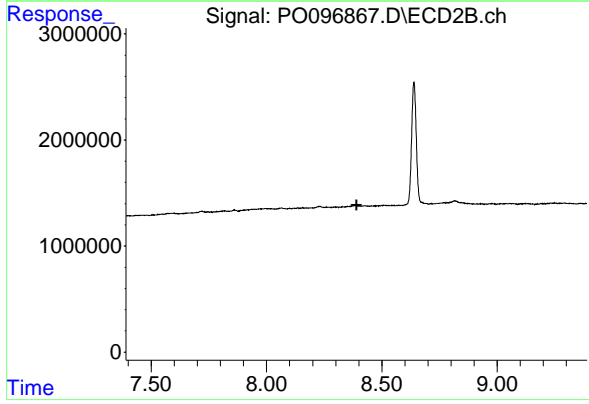
R.T.: 0.000 min
 Exp R.T. : 8.100 min
 Response: 0
 Conc: N.D.



#45 AR-1268-5

R.T.: 9.977 min
 Delta R.T.: -0.005 min
 Response: 116816
 Conc: 0.14 ng/ml

Instrument :
 ECD_O
 ClientSampleId :



#45 AR-1268-5

R.T.: 0.000 min
 Exp R.T. : 8.390 min
 Response: 0
 Conc: N.D.