

Data Path : Z:\pestpcbsrv\HPCHEM1\ECD\_0\Data\P0080923\  
 Data File : P0096869.D  
 Signal(s) : Signal #1: ECD1A.ch Signal #2: ECD2B.ch  
 Acq On : 09 Aug 2023 22:55  
 Operator : YP/AJ  
 Sample : 03932-02  
 Misc :  
 ALS Vial : 35 Sample Multiplier: 1

Instrument :  
 ECD\_0  
 ClientSampleId :

Integration File signal 1: autoint1.e  
 Integration File signal 2: autoint2.e  
 Quant Time: Aug 10 01:38:21 2023  
 Quant Method : Z:\pestpcbsrv\HPCHEM1\ECD\_0\methods\P0080723.M  
 Quant Title : GC EXTRACTABLES  
 QLast Update : Tue Aug 08 04:34:41 2023  
 Response via : Initial Calibration  
 Integrator: ChemStation

Volume Inj. : 2 µl  
 Signal #1 Phase : ZB-MR2 Signal #2 Phase: ZB-MR2  
 Signal #1 Info : 30Mx0.32mmx 0.50µ Signal #2 Info : 30M x 0.32mm x 0.25µm

Compound	RT#1	RT#2	Resp#1	Resp#2	ng/ml	ng/ml
-----						
System Monitoring Compounds						
1) SA Tetrachlo...	4.413	3.620	41710588	17958202	12.601	13.566
2) SA Decachlor...	10.354	8.640	44139667	18804876	20.172	16.254
Target Compounds						
3) L1 AR-1016-1	5.572	4.731	12790	282268	0.136	6.367 #
4) L1 AR-1016-2	5.650f	4.731	508204	282268	3.799	4.614
5) L1 AR-1016-3	5.650	4.849f	508204	232556	5.840	7.119
6) L1 AR-1016-4	5.793	4.966	205272	696313	3.056	24.358 #
7) L1 AR-1016-5	6.106	5.159	550857	795077	7.890	20.680 #
8) L2 AR-1221-1	4.622	3.836	8164923	162098	200.341	9.339 #
9) L2 AR-1221-2	4.689	3.902	412720	3587913	13.585	277.687 #
10) L2 AR-1221-3	4.798	4.005	723249	343560	8.263	8.655
11) L3 AR-1232-1	4.798	4.005	723249	343560	9.917	10.621
12) L3 AR-1232-2	5.334	4.731	1292292	282268	32.596	9.783 #
13) L3 AR-1232-3	5.650f	4.849f	508204	232556	8.308	15.338 #
14) L3 AR-1232-4	5.793	4.997	205272	238110	6.727	15.933 #
15) L3 AR-1232-5	5.838	5.159	292460	795077	10.451	48.638 #
16) L4 AR-1242-1	5.572	4.731	12790	282268	0.153	7.160 #
17) L4 AR-1242-2	5.650f	4.731	508204	282268	4.316	5.180
18) L4 AR-1242-3	5.650	4.849f	508204	232556	6.879	7.865
19) L4 AR-1242-4	5.793	4.997	205272	238110	3.448	7.556 #
20) L4 AR-1242-5	6.505	5.498	263167	1354946	4.783	37.187 #
21) L5 AR-1248-1	5.572	4.731	12790	282268	0.218	10.059 #
22) L5 AR-1248-2	5.838	4.966	292460	696313	3.111	16.430 #
23) L5 AR-1248-3	6.106	4.997	550857	238110	5.632	5.428
24) L5 AR-1248-4	6.505	5.159	263167	795077	2.897	15.575 #
25) L5 AR-1248-5	6.505	5.554	263167	1333029	2.988	28.513 #
26) L6 AR-1254-1	6.505f	5.498	263167	1354946	2.408	18.361 #
27) L6 AR-1254-2	6.670	5.646	2294464	470749	14.231	7.146 #
28) L6 AR-1254-3	7.031	6.077	804368	6135977	5.133	60.715 #
29) L6 AR-1254-4	7.377	6.309	6583237	1048392	65.298	18.115 #
30) L6 AR-1254-5	7.787	6.728	3125734	468406	27.855	5.328 #
31) L7 AR-1260-1	7.257	6.204	1781088	254224	14.171	3.613 #
32) L7 AR-1260-2	7.513	6.369	5405083	87836	40.116	1.052 #
33) L7 AR-1260-3	7.845	6.548	762812	2448012	7.351	31.702 #
34) L7 AR-1260-4	8.088	7.024	4255105	370764	38.059	5.786 #
35) L7 AR-1260-5	8.439	7.221	1215050	815620	5.787	5.883
36) L8 AR-1262-1	7.845	6.801	762812	1518952	5.136	38.583 #
37) L8 AR-1262-2	8.439	7.024	1215050	370764	5.249	4.571
38) L8 AR-1262-3	8.762	7.572	92740	548642	0.556	8.549 #
39) L8 AR-1262-4	8.865	7.597	3062273	188262	42.002	1.657 #
40) L8 AR-1262-5	9.517	8.103	6126847	1571134	73.571	29.916 #
41) L9 AR-1268-1	8.762	7.572	92740	548642	0.302	2.961 #

Data Path : Z:\pestpcbsrv\HPCHEM1\ECD\_0\Data\P0080923\  
 Data File : P0096869.D  
 Signal(s) : Signal #1: ECD1A.ch Signal #2: ECD2B.ch  
 Acq On : 09 Aug 2023 22:55  
 Operator : YP/AJ  
 Sample : 03932-02  
 Misc :  
 ALS Vial : 35 Sample Multiplier: 1

Instrument :  
 ECD\_0  
 ClientSampleId :

Integration File signal 1: autoint1.e  
 Integration File signal 2: autoint2.e  
 Quant Time: Aug 10 01:38:21 2023  
 Quant Method : Z:\pestpcbsrv\HPCHEM1\ECD\_0\methods\P0080723.M  
 Quant Title : GC EXTRACTABLES  
 QLast Update : Tue Aug 08 04:34:41 2023  
 Response via : Initial Calibration  
 Integrator: ChemStation

Volume Inj. : 2 µl  
 Signal #1 Phase : ZB-MR1 Signal #2 Phase: ZB-MR2  
 Signal #1 Info : 30Mx0.32mmx 0.50µ Signal #2 Info : 30M x 0.32mm x 0.25µm

	Compound	RT#1	RT#2	Resp#1	Resp#2	ng/ml	ng/ml
42)	L9 AR-1268-2	8.865	7.597	3062273	188262	11.168	1.123 #
43)	L9 AR-1268-3	9.127	7.813	2357716	3889500	9.232	26.921 #
44)	L9 AR-1268-4	9.517	8.103	6126847	1571134	66.084	26.373 #
45)	L9 AR-1268-5	9.977	8.375	968555	1051479	1.199	2.528 #

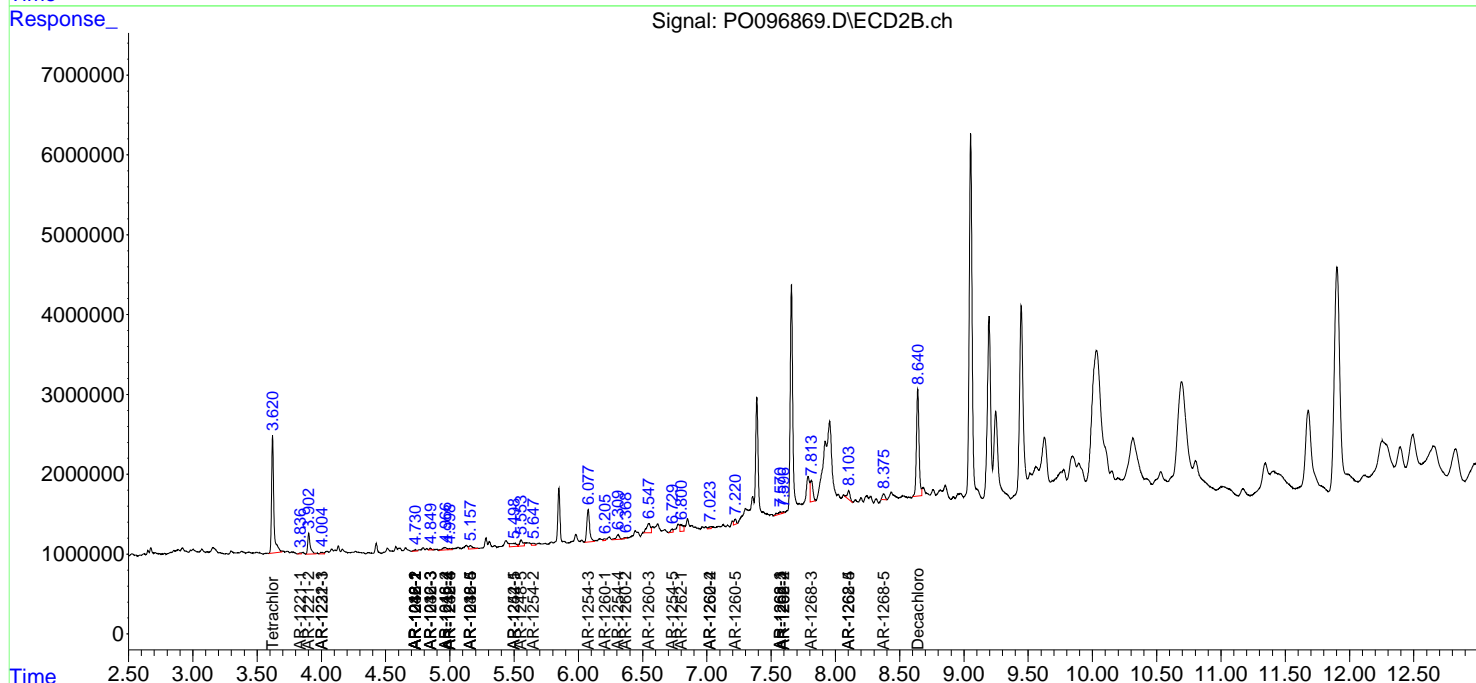
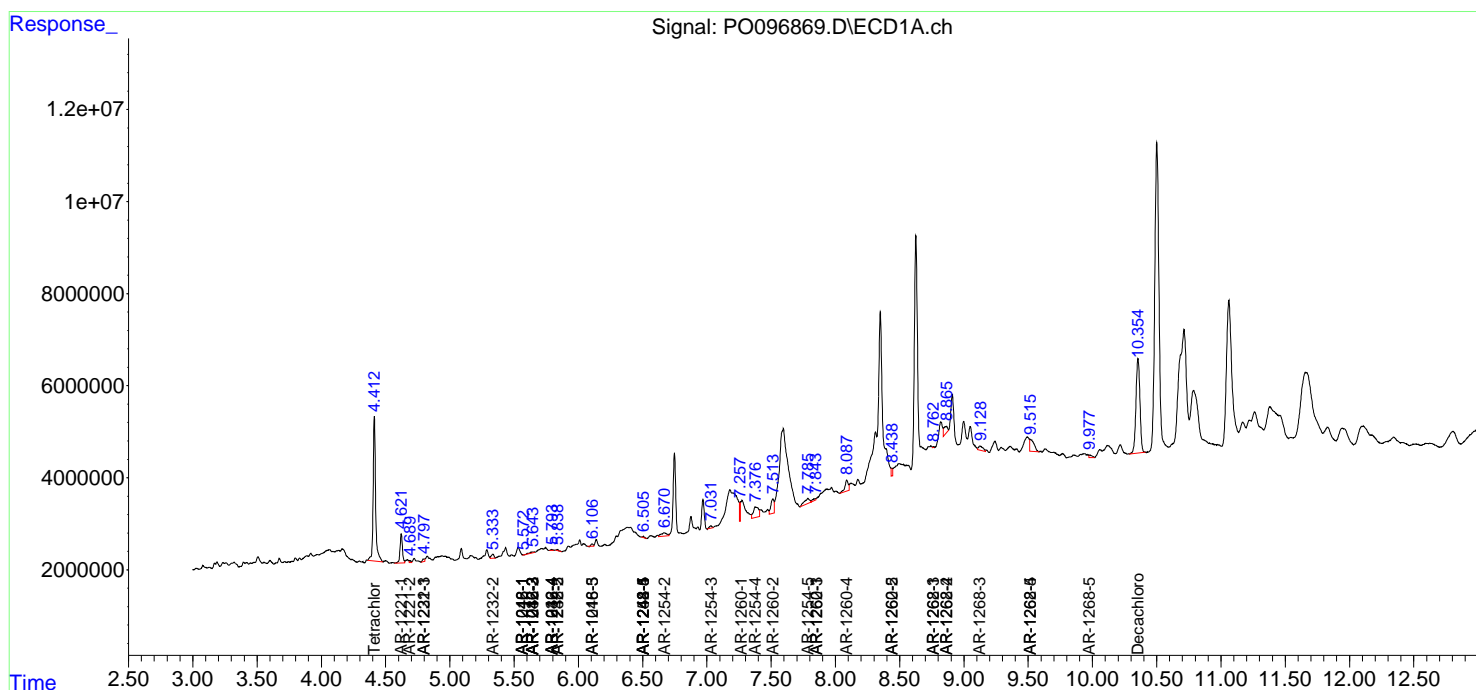
(f)=RT Delta > 1/2 Window (#)=Amounts differ by > 25% (m)=manual int.

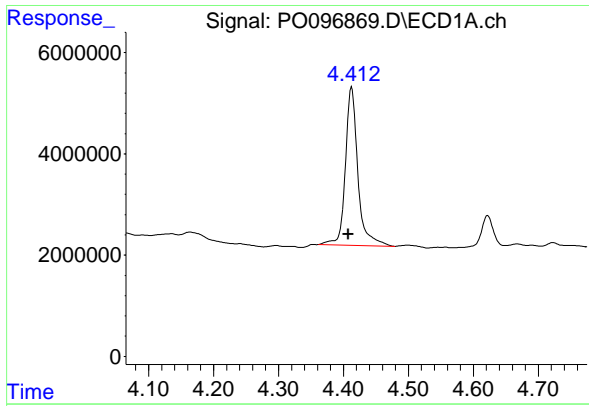
Data Path : Z:\pestpcbsrv\HPCHEM1\ECD\_O\Data\PO080923\  
 Data File : PO096869.D  
 Signal(s) : Signal #1: ECD1A.ch Signal #2: ECD2B.ch  
 Acq On : 09 Aug 2023 22:55  
 Operator : YP/AJ  
 Sample : 03932-02  
 Misc :  
 ALS Vial : 35 Sample Multiplier: 1

Instrument :  
 ECD\_O  
 ClientSampleId :

Integration File signal 1: autoint1.e  
 Integration File signal 2: autoint2.e  
 Quant Time: Aug 10 01:38:21 2023  
 Quant Method : Z:\pestpcbsrv\HPCHEM1\ECD\_O\methods\PO080723.M  
 Quant Title : GC EXTRACTABLES  
 QLast Update : Tue Aug 08 04:34:41 2023  
 Response via : Initial Calibration  
 Integrator: ChemStation

Volume Inj. : 2 µl  
 Signal #1 Phase : ZB-MR1 Signal #2 Phase: ZB-MR2  
 Signal #1 Info : 30Mx0.32mmx 0.50µ Signal #2 Info : 30M x 0.32mm x 0.25µm

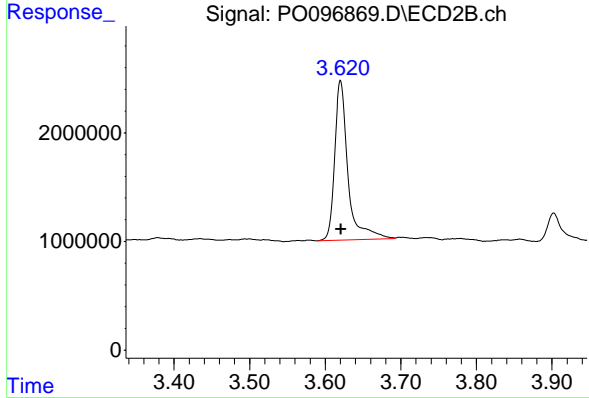




#1 Tetrachloro-m-xylene

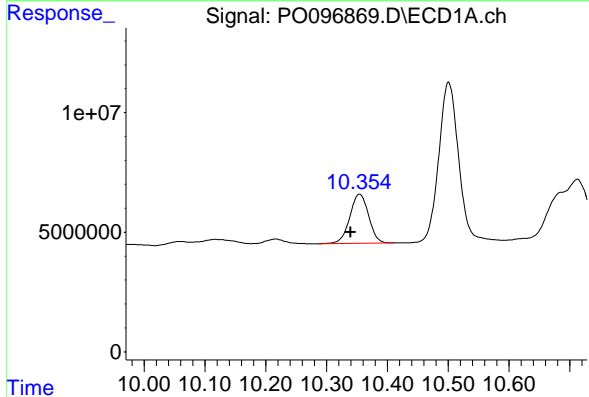
R.T.: 4.413 min  
 Delta R.T.: 0.006 min  
 Response: 41710588  
 Conc: 12.60 ng/ml

Instrument :  
 ECD\_O  
 ClientSampleId :



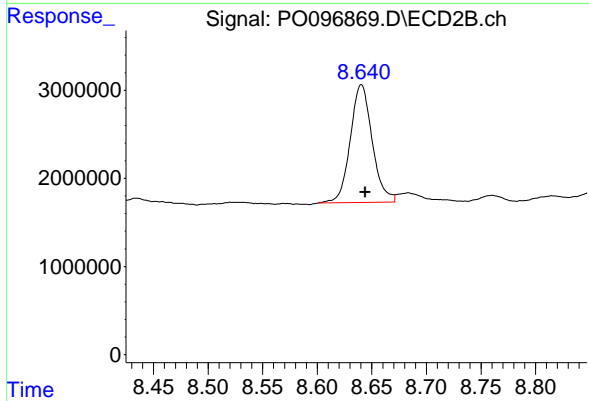
#1 Tetrachloro-m-xylene

R.T.: 3.620 min  
 Delta R.T.: 0.000 min  
 Response: 17958202  
 Conc: 13.57 ng/ml



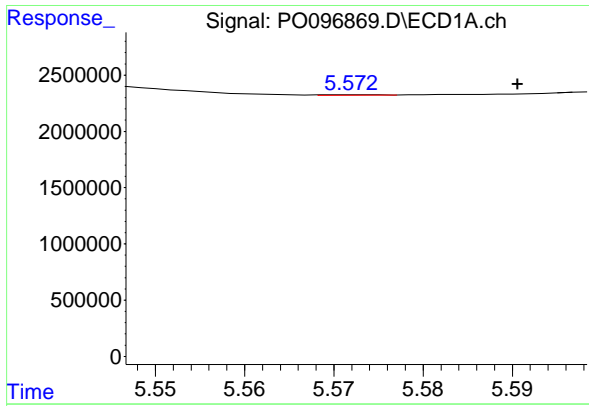
#2 Decachlorobiphenyl

R.T.: 10.354 min  
 Delta R.T.: 0.015 min  
 Response: 44139667  
 Conc: 20.17 ng/ml



#2 Decachlorobiphenyl

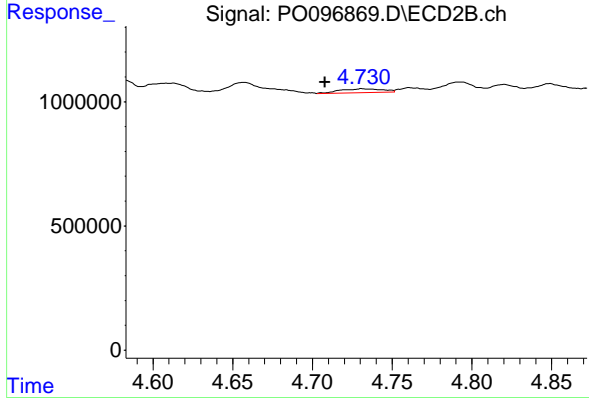
R.T.: 8.640 min  
 Delta R.T.: -0.004 min  
 Response: 18804876  
 Conc: 16.25 ng/ml



#3 AR-1016-1

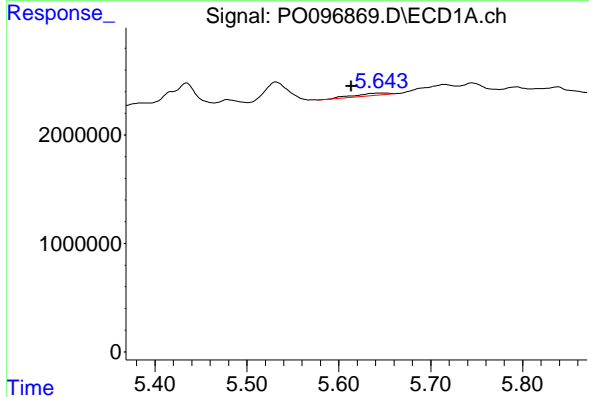
R.T.: 5.572 min  
 Delta R.T.: -0.018 min  
 Response: 12790  
 Conc: 0.14 ng/ml

Instrument :  
 ECD\_O  
 ClientSampleId :



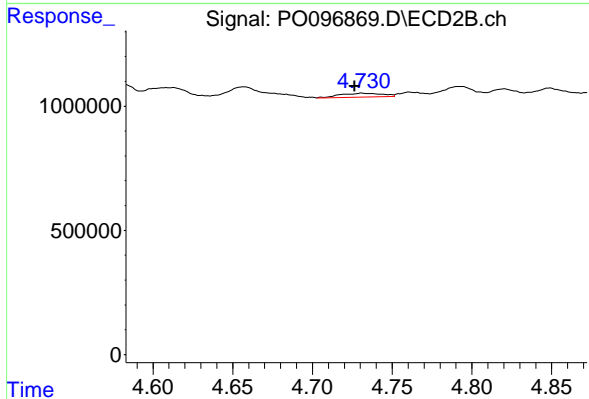
#3 AR-1016-1

R.T.: 4.731 min  
 Delta R.T.: 0.023 min  
 Response: 282268  
 Conc: 6.37 ng/ml



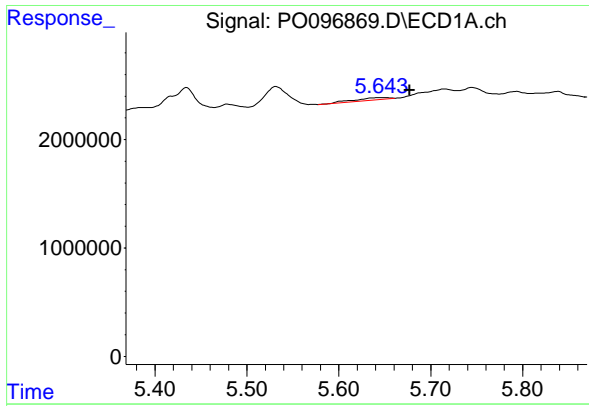
#4 AR-1016-2

R.T.: 5.650 min  
 Delta R.T.: 0.036 min  
 Response: 508204  
 Conc: 3.80 ng/ml



#4 AR-1016-2

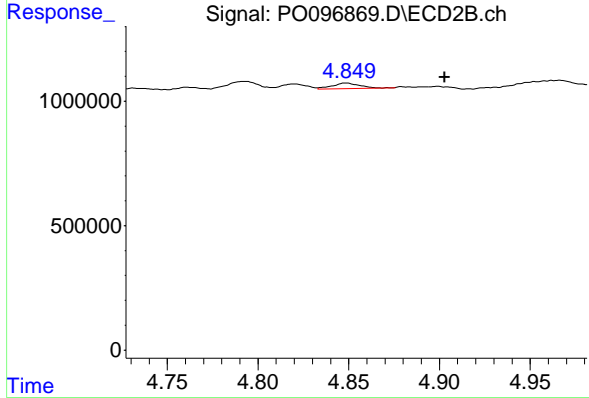
R.T.: 4.731 min  
 Delta R.T.: 0.005 min  
 Response: 282268  
 Conc: 4.61 ng/ml



#5 AR-1016-3

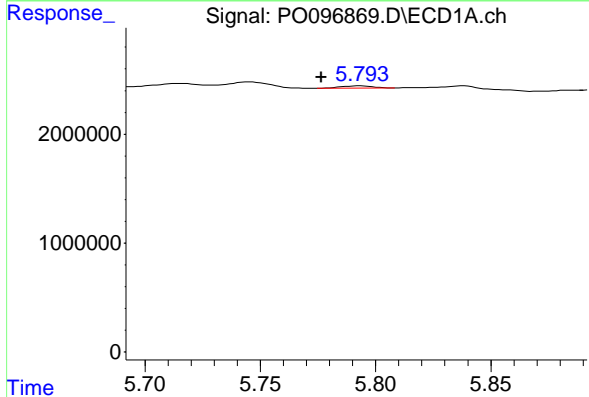
R.T.: 5.650 min  
 Delta R.T.: -0.027 min  
 Response: 508204  
 Conc: 5.84 ng/ml

Instrument :  
 ECD\_O  
 ClientSampleId :



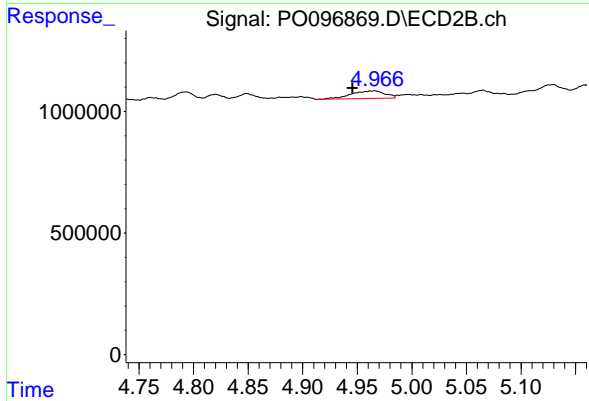
#5 AR-1016-3

R.T.: 4.849 min  
 Delta R.T.: -0.054 min  
 Response: 232556  
 Conc: 7.12 ng/ml



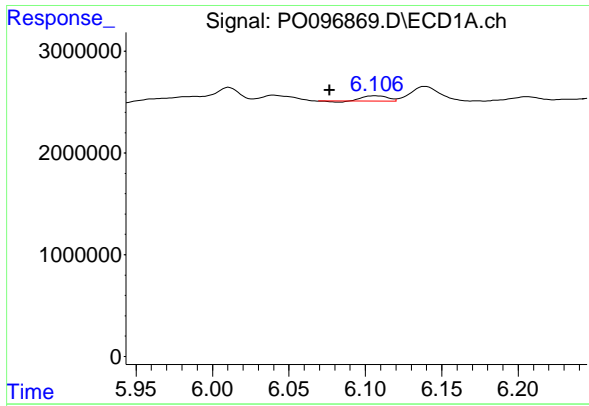
#6 AR-1016-4

R.T.: 5.793 min  
 Delta R.T.: 0.017 min  
 Response: 205272  
 Conc: 3.06 ng/ml



#6 AR-1016-4

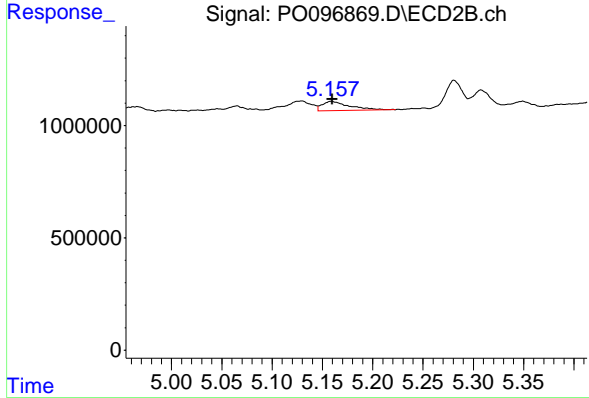
R.T.: 4.966 min  
 Delta R.T.: 0.020 min  
 Response: 696313  
 Conc: 24.36 ng/ml



#7 AR-1016-5

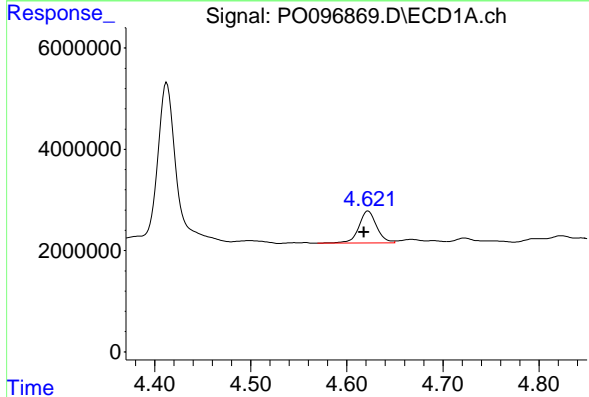
R.T.: 6.106 min  
 Delta R.T.: 0.030 min  
 Response: 550857  
 Conc: 7.89 ng/ml

Instrument :  
 ECD\_O  
 ClientSampleId :



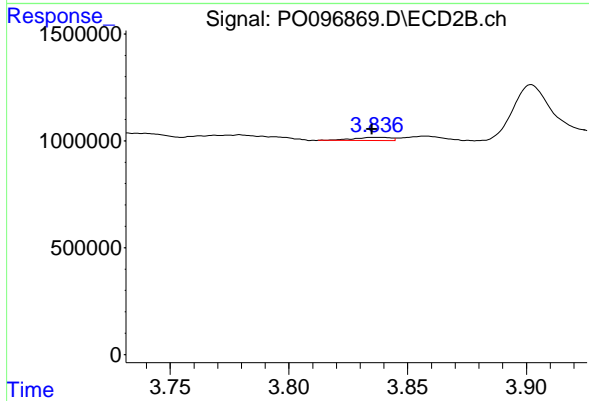
#7 AR-1016-5

R.T.: 5.159 min  
 Delta R.T.: 0.000 min  
 Response: 795077  
 Conc: 20.68 ng/ml



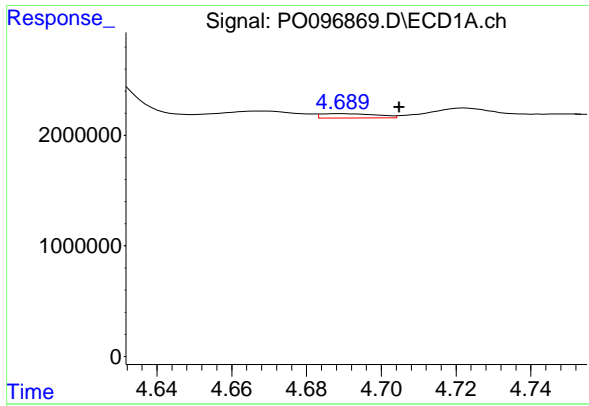
#8 AR-1221-1

R.T.: 4.622 min  
 Delta R.T.: 0.004 min  
 Response: 8164923  
 Conc: 200.34 ng/ml



#8 AR-1221-1

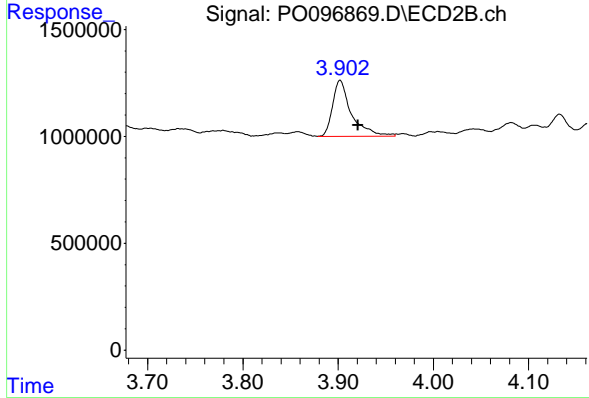
R.T.: 3.836 min  
 Delta R.T.: 0.001 min  
 Response: 162098  
 Conc: 9.34 ng/ml



#9 AR-1221-2

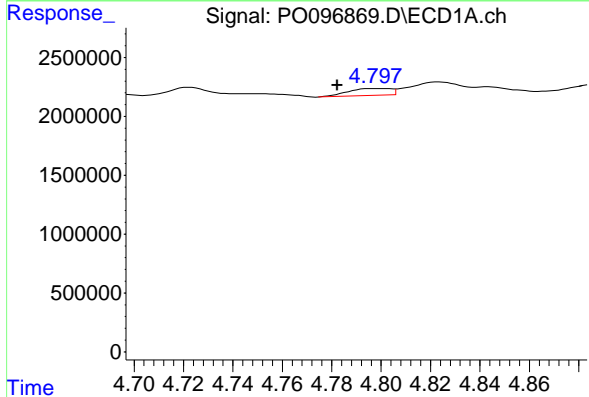
R.T.: 4.689 min  
 Delta R.T.: -0.015 min  
 Response: 412720  
 Conc: 13.59 ng/ml

Instrument :  
 ECD\_O  
 ClientSampleId :



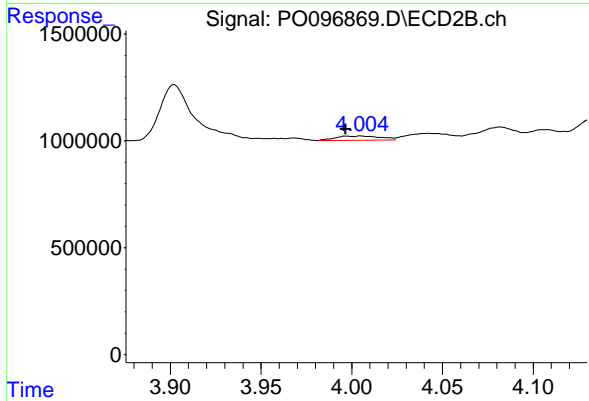
#9 AR-1221-2

R.T.: 3.902 min  
 Delta R.T.: -0.019 min  
 Response: 3587913  
 Conc: 277.69 ng/ml



#10 AR-1221-3

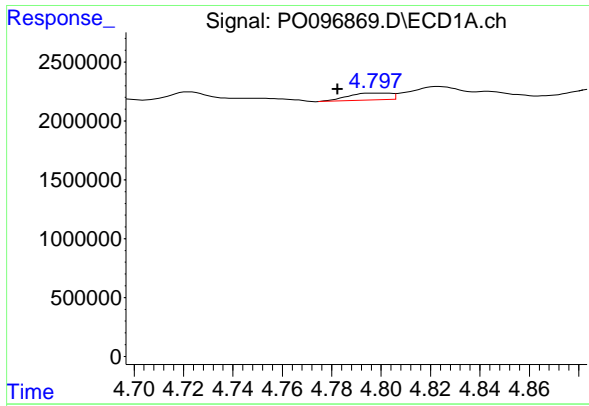
R.T.: 4.798 min  
 Delta R.T.: 0.016 min  
 Response: 723249  
 Conc: 8.26 ng/ml



#10 AR-1221-3

R.T.: 4.005 min  
 Delta R.T.: 0.008 min  
 Response: 343560  
 Conc: 8.66 ng/ml

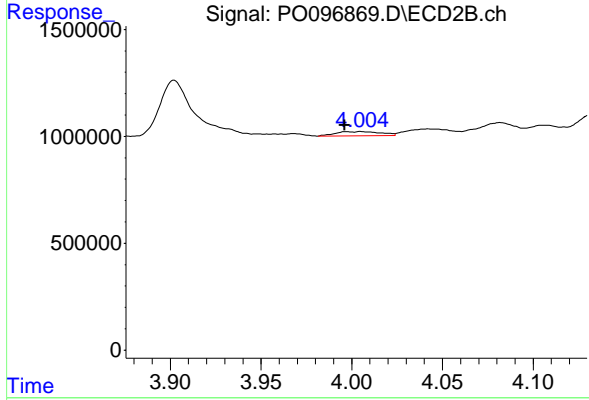




#11 AR-1232-1

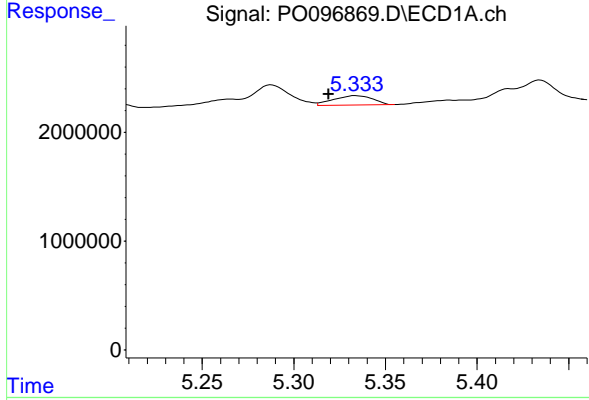
R.T.: 4.798 min  
 Delta R.T.: 0.016 min  
 Response: 723249  
 Conc: 9.92 ng/ml

Instrument :  
 ECD\_O  
 ClientSampleId :



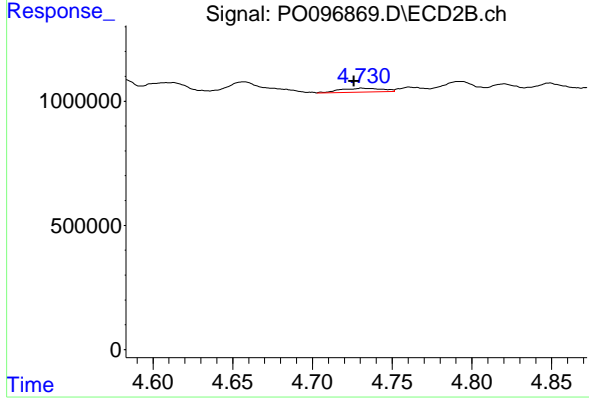
#11 AR-1232-1

R.T.: 4.005 min  
 Delta R.T.: 0.009 min  
 Response: 343560  
 Conc: 10.62 ng/ml



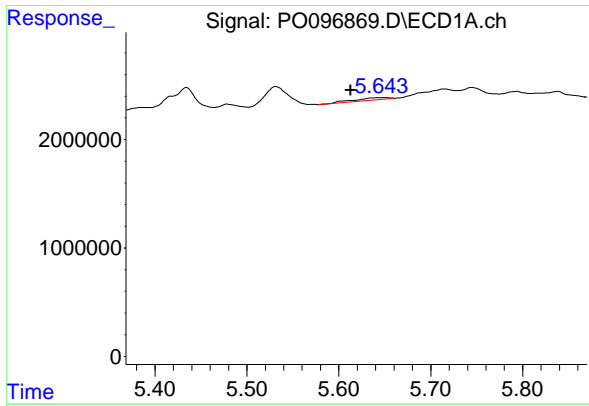
#12 AR-1232-2

R.T.: 5.334 min  
 Delta R.T.: 0.015 min  
 Response: 1292292  
 Conc: 32.60 ng/ml



#12 AR-1232-2

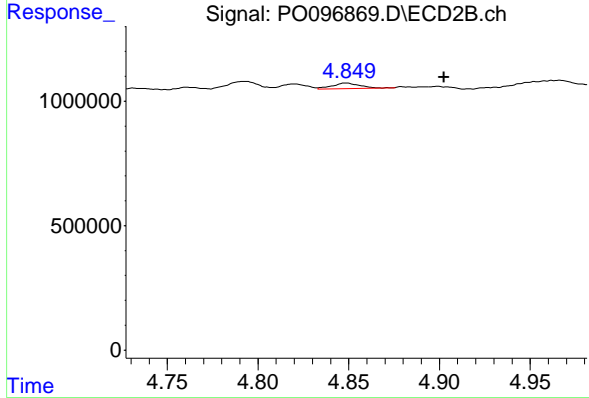
R.T.: 4.731 min  
 Delta R.T.: 0.005 min  
 Response: 282268  
 Conc: 9.78 ng/ml



#13 AR-1232-3

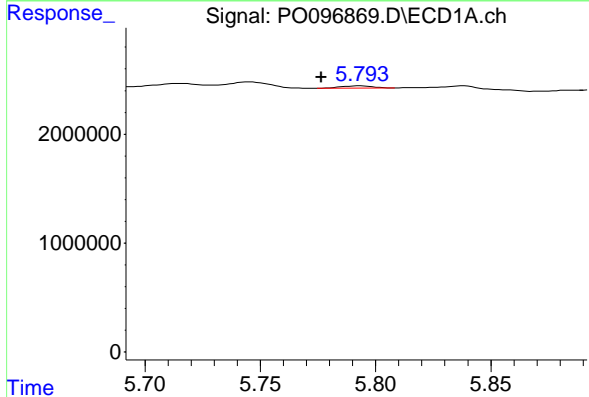
R.T.: 5.650 min  
 Delta R.T.: 0.037 min  
 Response: 508204  
 Conc: 8.31 ng/ml

Instrument :  
 ECD\_O  
 ClientSampleId :



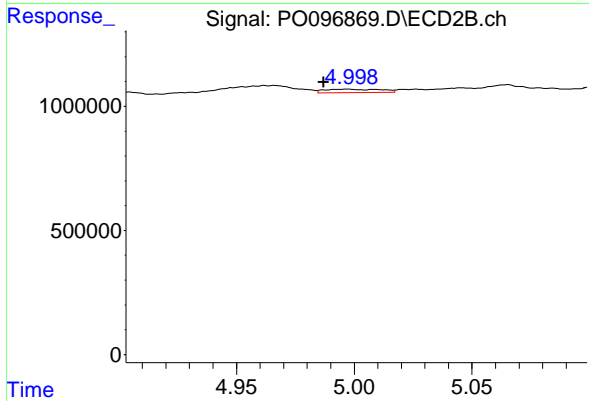
#13 AR-1232-3

R.T.: 4.849 min  
 Delta R.T.: -0.054 min  
 Response: 232556  
 Conc: 15.34 ng/ml



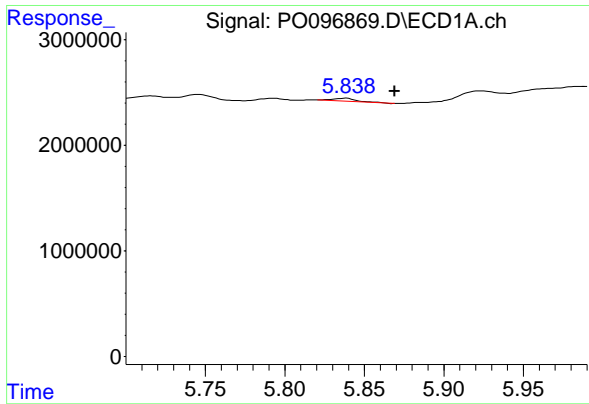
#14 AR-1232-4

R.T.: 5.793 min  
 Delta R.T.: 0.017 min  
 Response: 205272  
 Conc: 6.73 ng/ml



#14 AR-1232-4

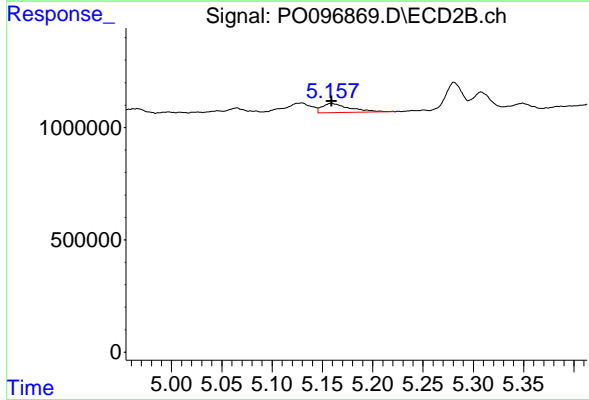
R.T.: 4.997 min  
 Delta R.T.: 0.010 min  
 Response: 238110  
 Conc: 15.93 ng/ml



#15 AR-1232-5

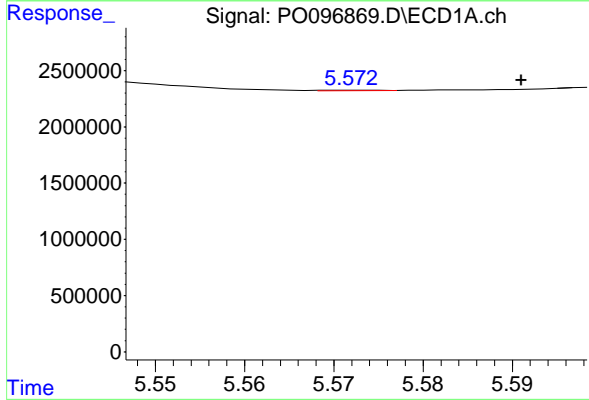
R.T.: 5.838 min  
 Delta R.T.: -0.031 min  
 Response: 292460  
 Conc: 10.45 ng/ml

Instrument :  
 ECD\_O  
 ClientSampleId :



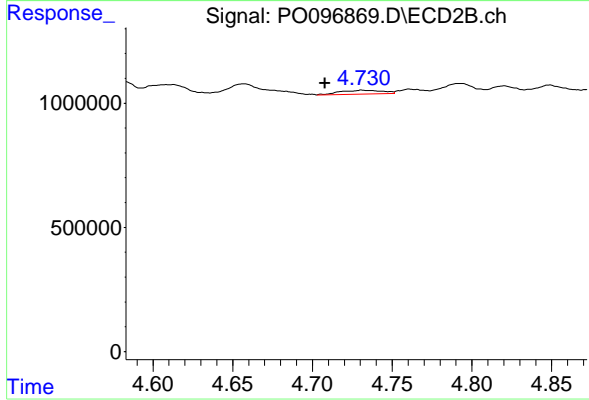
#15 AR-1232-5

R.T.: 5.159 min  
 Delta R.T.: 0.000 min  
 Response: 795077  
 Conc: 48.64 ng/ml



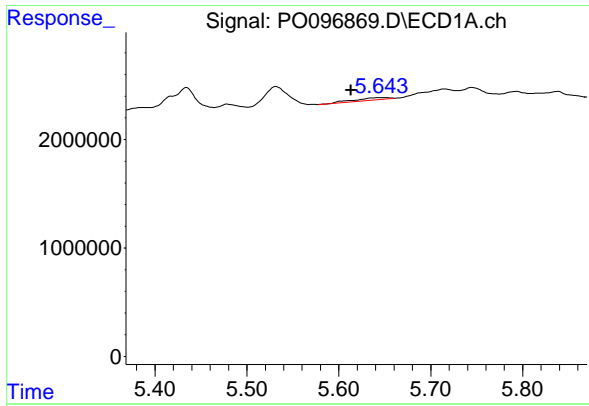
#16 AR-1242-1

R.T.: 5.572 min  
 Delta R.T.: -0.019 min  
 Response: 12790  
 Conc: 0.15 ng/ml



#16 AR-1242-1

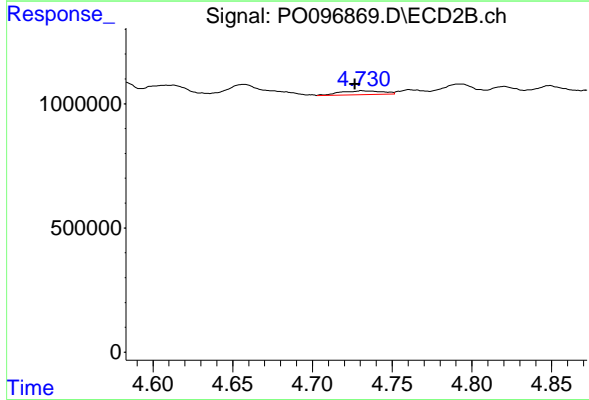
R.T.: 4.731 min  
 Delta R.T.: 0.023 min  
 Response: 282268  
 Conc: 7.16 ng/ml



#17 AR-1242-2

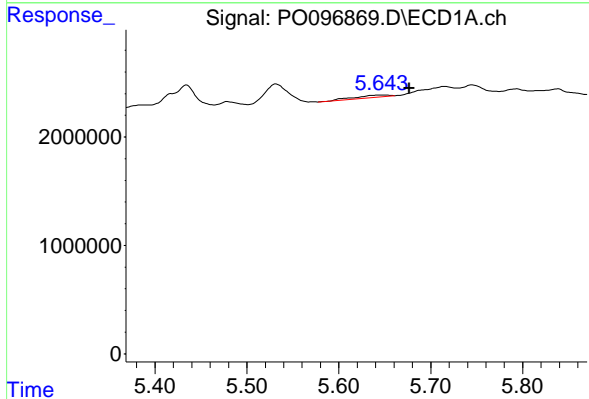
R.T.: 5.650 min  
 Delta R.T.: 0.036 min  
 Response: 508204  
 Conc: 4.32 ng/ml

Instrument :  
 ECD\_O  
 ClientSampleId :



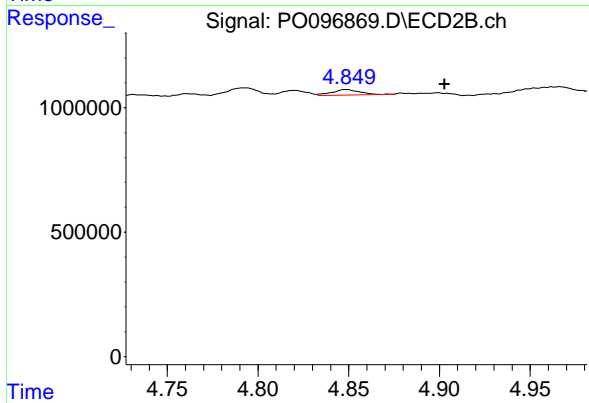
#17 AR-1242-2

R.T.: 4.731 min  
 Delta R.T.: 0.005 min  
 Response: 282268  
 Conc: 5.18 ng/ml



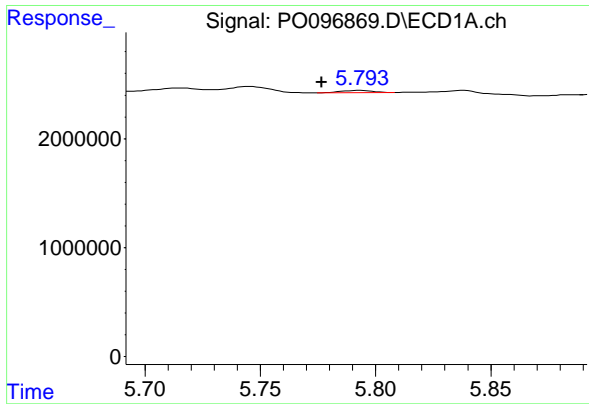
#18 AR-1242-3

R.T.: 5.650 min  
 Delta R.T.: -0.027 min  
 Response: 508204  
 Conc: 6.88 ng/ml



#18 AR-1242-3

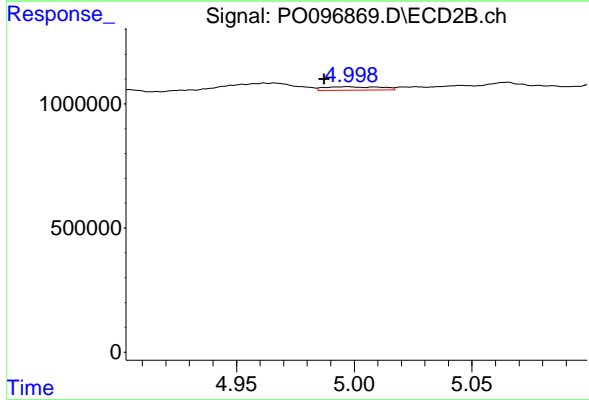
R.T.: 4.849 min  
 Delta R.T.: -0.054 min  
 Response: 232556  
 Conc: 7.86 ng/ml



#19 AR-1242-4

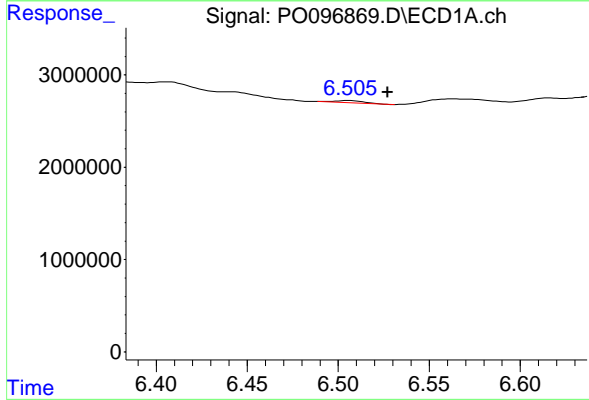
R.T.: 5.793 min  
 Delta R.T.: 0.017 min  
 Response: 205272  
 Conc: 3.45 ng/ml

Instrument :  
 ECD\_O  
 ClientSampleId :



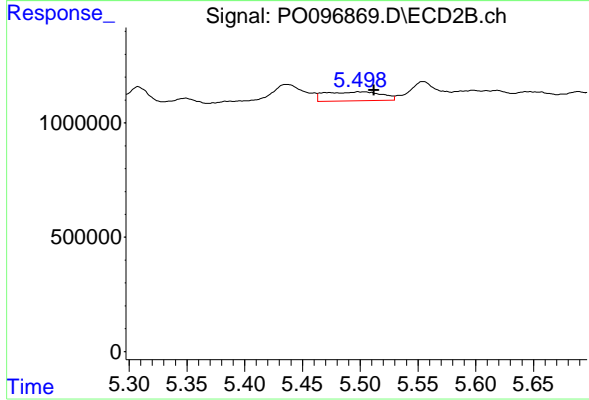
#19 AR-1242-4

R.T.: 4.997 min  
 Delta R.T.: 0.010 min  
 Response: 238110  
 Conc: 7.56 ng/ml



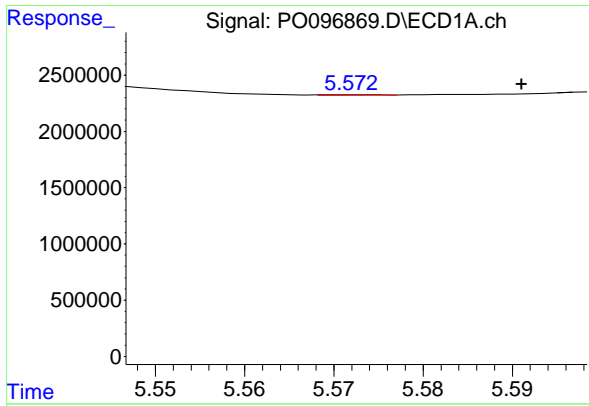
#20 AR-1242-5

R.T.: 6.505 min  
 Delta R.T.: -0.022 min  
 Response: 263167  
 Conc: 4.78 ng/ml



#20 AR-1242-5

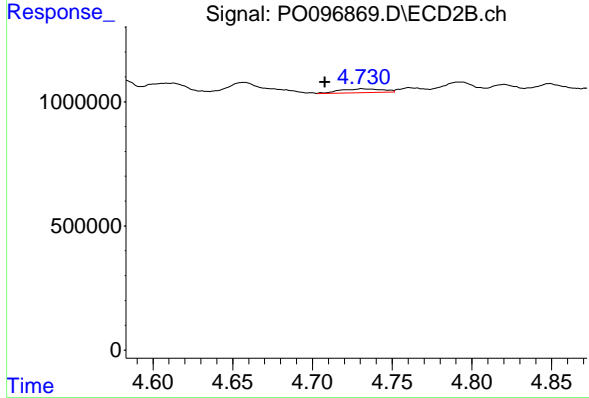
R.T.: 5.498 min  
 Delta R.T.: -0.014 min  
 Response: 1354946  
 Conc: 37.19 ng/ml



#21 AR-1248-1

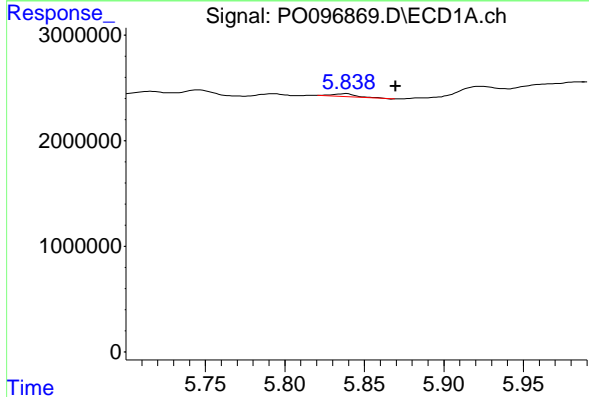
R.T.: 5.572 min  
 Delta R.T.: -0.019 min  
 Response: 12790  
 Conc: 0.22 ng/ml

Instrument :  
 ECD\_O  
 ClientSampleId :



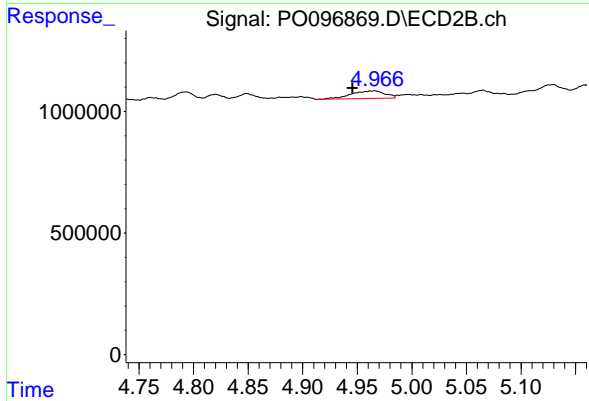
#21 AR-1248-1

R.T.: 4.731 min  
 Delta R.T.: 0.023 min  
 Response: 282268  
 Conc: 10.06 ng/ml



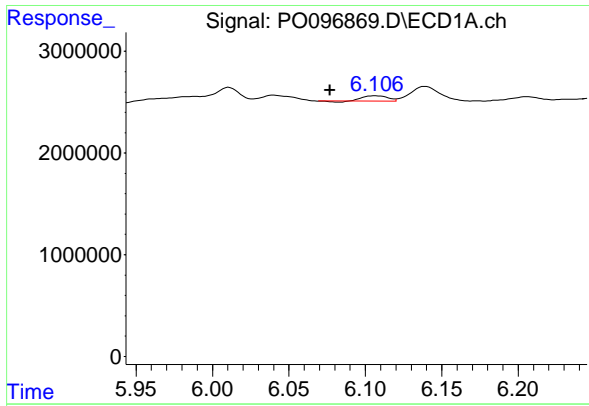
#22 AR-1248-2

R.T.: 5.838 min  
 Delta R.T.: -0.031 min  
 Response: 292460  
 Conc: 3.11 ng/ml



#22 AR-1248-2

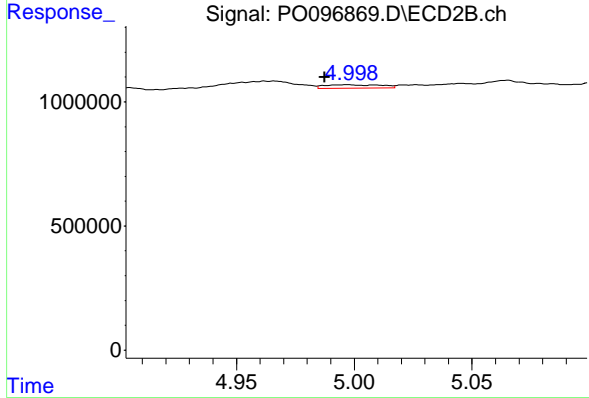
R.T.: 4.966 min  
 Delta R.T.: 0.020 min  
 Response: 696313  
 Conc: 16.43 ng/ml



#23 AR-1248-3

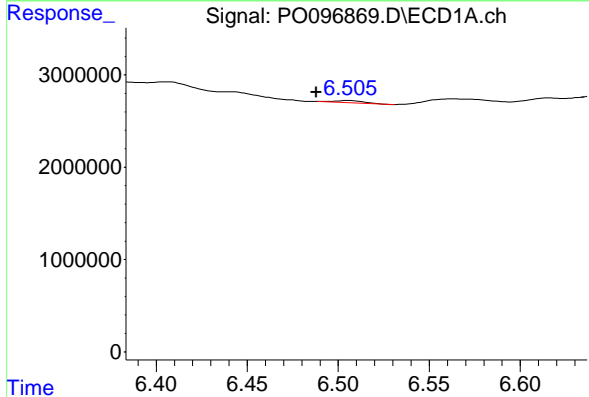
R.T.: 6.106 min  
 Delta R.T.: 0.030 min  
 Response: 550857  
 Conc: 5.63 ng/ml

Instrument :  
 ECD\_O  
 ClientSampleId :



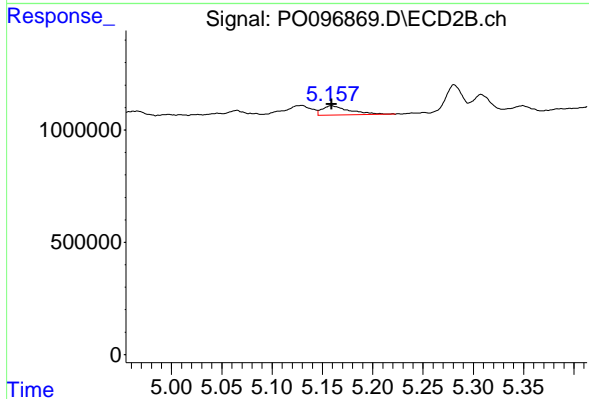
#23 AR-1248-3

R.T.: 4.997 min  
 Delta R.T.: 0.010 min  
 Response: 238110  
 Conc: 5.43 ng/ml



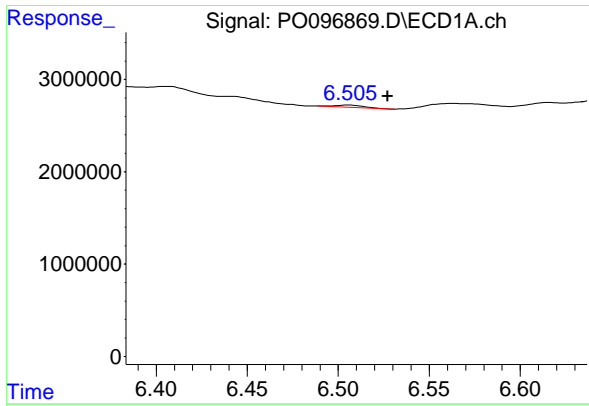
#24 AR-1248-4

R.T.: 6.505 min  
 Delta R.T.: 0.017 min  
 Response: 263167  
 Conc: 2.90 ng/ml



#24 AR-1248-4

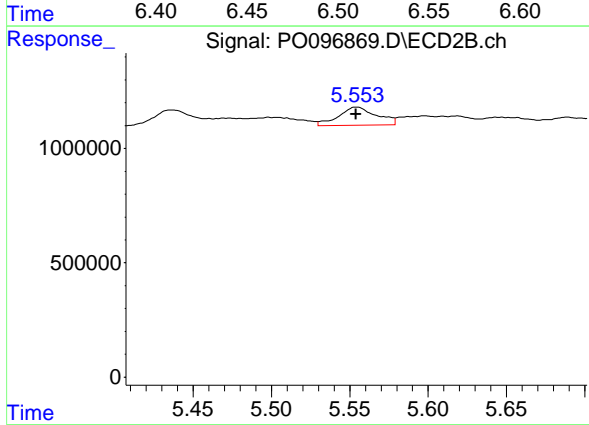
R.T.: 5.159 min  
 Delta R.T.: 0.000 min  
 Response: 795077  
 Conc: 15.57 ng/ml



#25 AR-1248-5

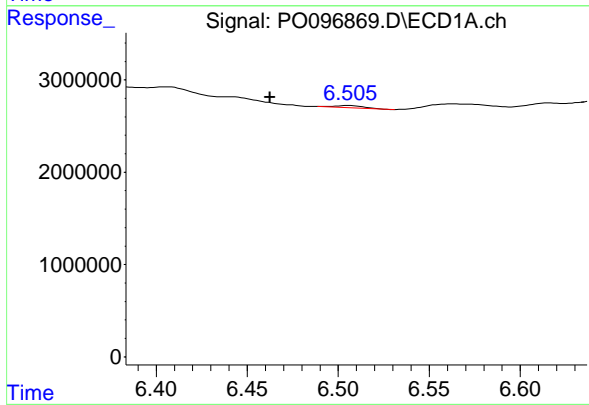
R.T.: 6.505 min  
 Delta R.T.: -0.022 min  
 Response: 263167  
 Conc: 2.99 ng/ml

Instrument :  
 ECD\_O  
 ClientSampleId :



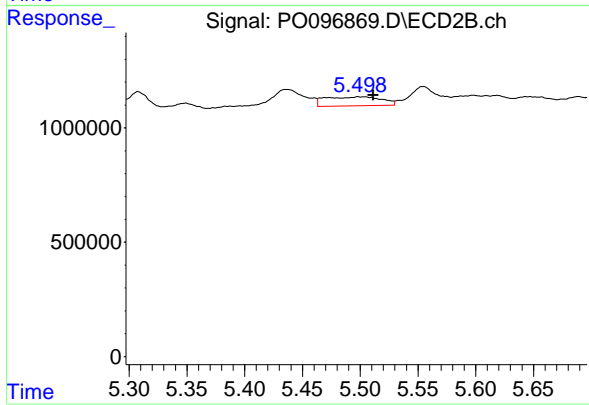
#25 AR-1248-5

R.T.: 5.554 min  
 Delta R.T.: 0.000 min  
 Response: 1333029  
 Conc: 28.51 ng/ml



#26 AR-1254-1

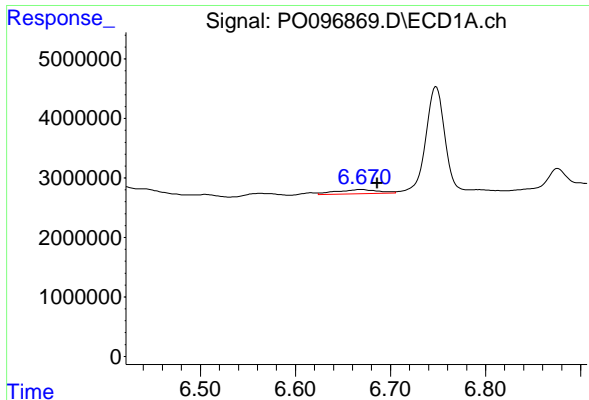
R.T.: 6.505 min  
 Delta R.T.: 0.043 min  
 Response: 263167  
 Conc: 2.41 ng/ml



#26 AR-1254-1

R.T.: 5.498 min  
 Delta R.T.: -0.013 min  
 Response: 1354946  
 Conc: 18.36 ng/ml

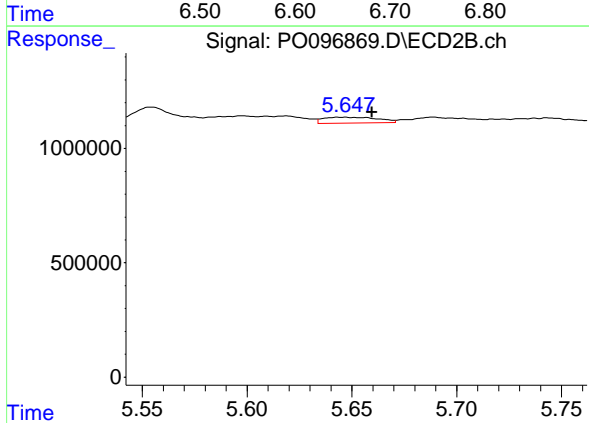




#27 AR-1254-2

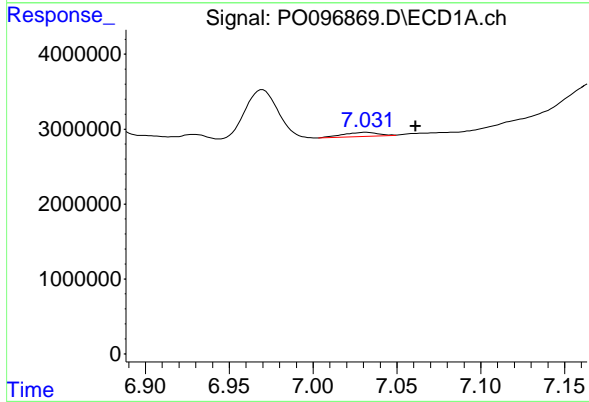
R.T.: 6.670 min  
 Delta R.T.: -0.017 min  
 Response: 2294464  
 Conc: 14.23 ng/ml

Instrument :  
 ECD\_O  
 ClientSampleId :



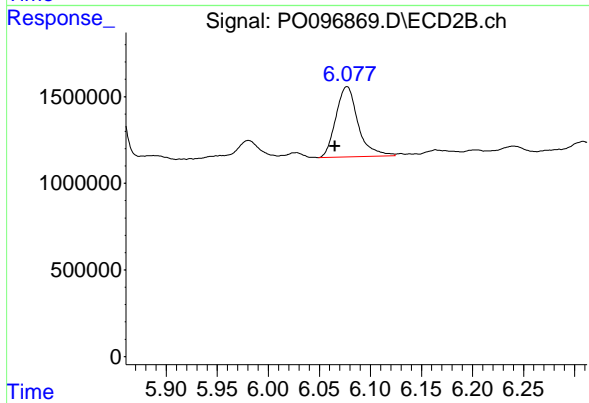
#27 AR-1254-2

R.T.: 5.646 min  
 Delta R.T.: -0.013 min  
 Response: 470749  
 Conc: 7.15 ng/ml



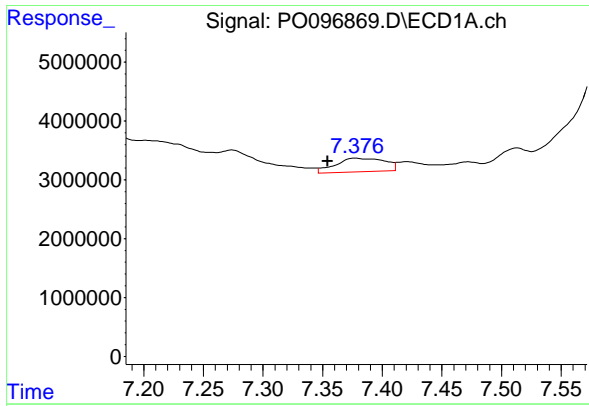
#28 AR-1254-3

R.T.: 7.031 min  
 Delta R.T.: -0.030 min  
 Response: 804368  
 Conc: 5.13 ng/ml



#28 AR-1254-3

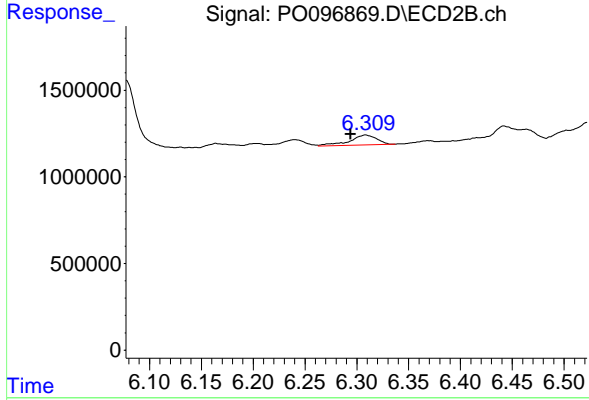
R.T.: 6.077 min  
 Delta R.T.: 0.012 min  
 Response: 613597  
 Conc: 60.71 ng/ml



#29 AR-1254-4

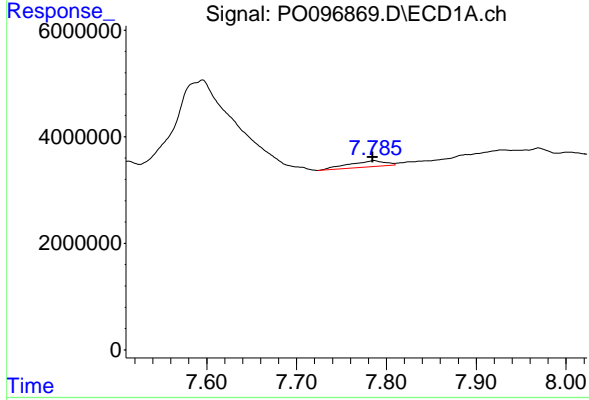
R.T.: 7.377 min  
 Delta R.T.: 0.023 min  
 Response: 6583237  
 Conc: 65.30 ng/ml

Instrument :  
 ECD\_O  
 ClientSampleId :



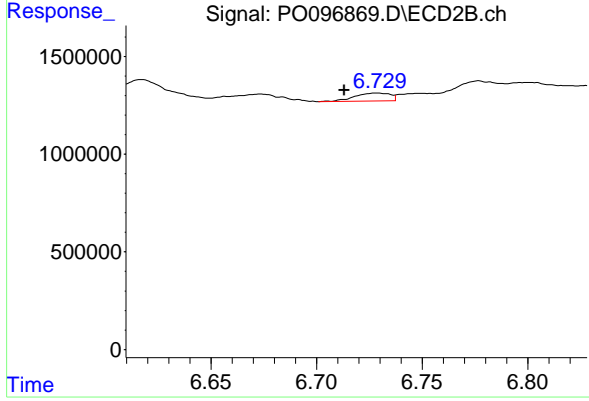
#29 AR-1254-4

R.T.: 6.309 min  
 Delta R.T.: 0.014 min  
 Response: 1048392  
 Conc: 18.11 ng/ml



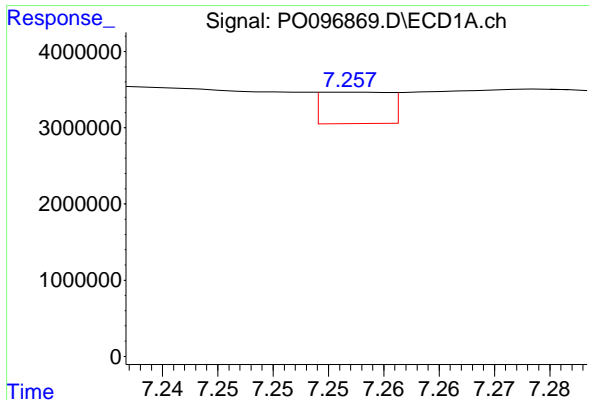
#30 AR-1254-5

R.T.: 7.787 min  
 Delta R.T.: 0.002 min  
 Response: 3125734  
 Conc: 27.86 ng/ml



#30 AR-1254-5

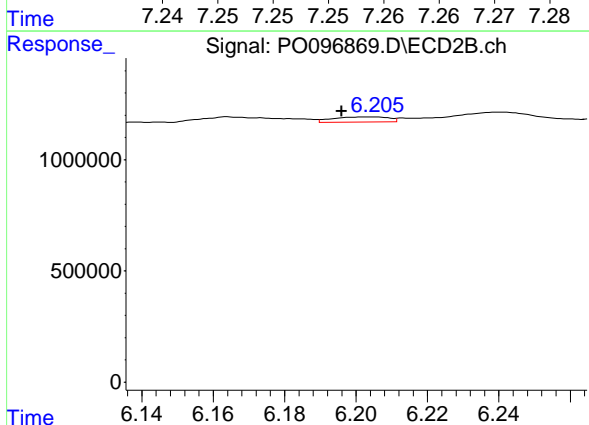
R.T.: 6.728 min  
 Delta R.T.: 0.015 min  
 Response: 468406  
 Conc: 5.33 ng/ml



#31 AR-1260-1

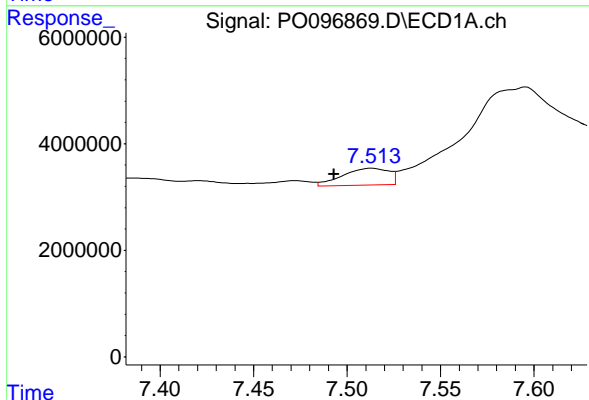
R.T.: 7.257 min  
 Delta R.T.: 0.028 min  
 Response: 1781088  
 Conc: 14.17 ng/ml

Instrument :  
 ECD\_O  
 ClientSampleId :



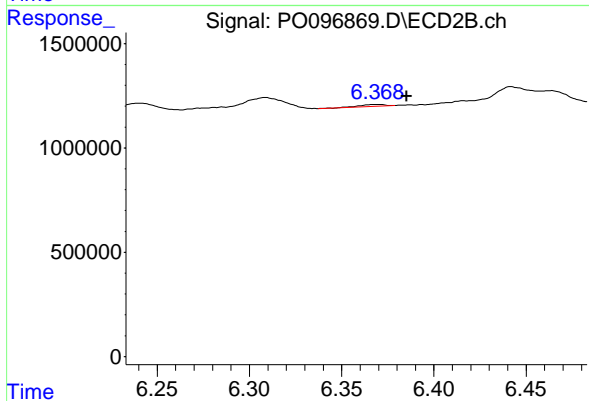
#31 AR-1260-1

R.T.: 6.204 min  
 Delta R.T.: 0.008 min  
 Response: 254224  
 Conc: 3.61 ng/ml



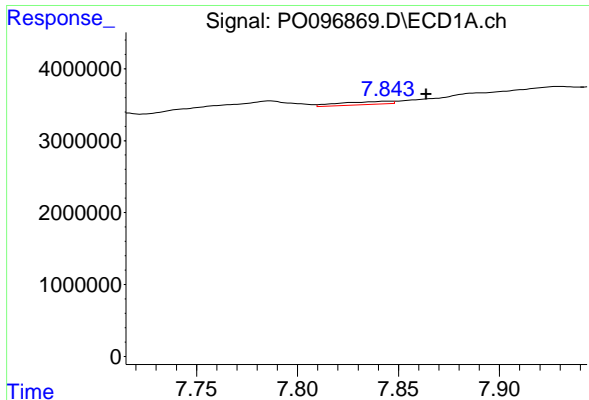
#32 AR-1260-2

R.T.: 7.513 min  
 Delta R.T.: 0.020 min  
 Response: 5405083  
 Conc: 40.12 ng/ml



#32 AR-1260-2

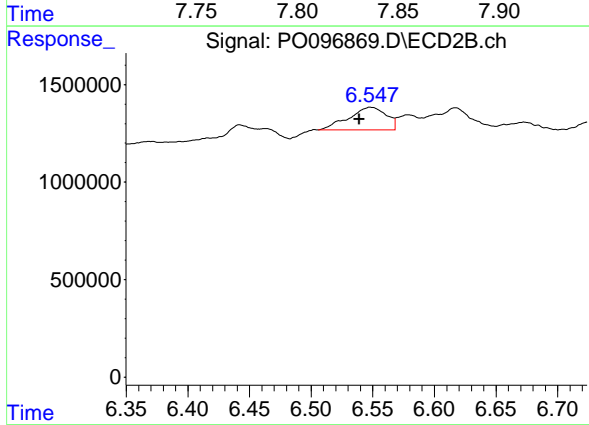
R.T.: 6.369 min  
 Delta R.T.: -0.016 min  
 Response: 87836  
 Conc: 1.05 ng/ml



#33 AR-1260-3

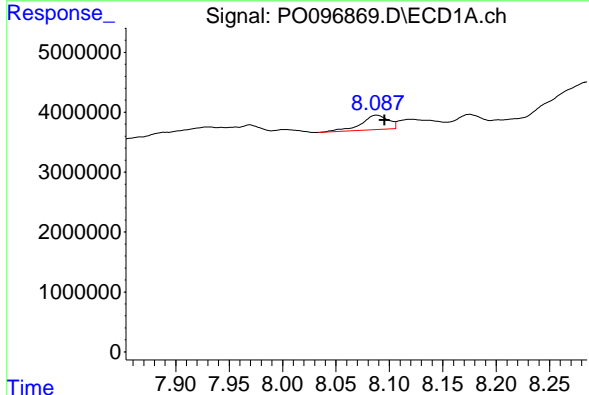
R.T.: 7.845 min  
 Delta R.T.: -0.019 min  
 Response: 762812  
 Conc: 7.35 ng/ml

Instrument :  
 ECD\_O  
 ClientSampleId :



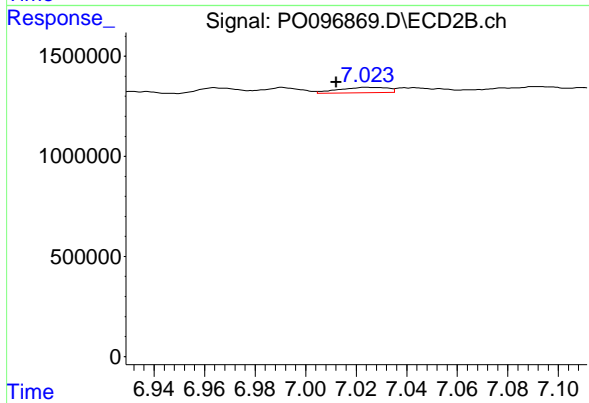
#33 AR-1260-3

R.T.: 6.548 min  
 Delta R.T.: 0.009 min  
 Response: 2448012  
 Conc: 31.70 ng/ml



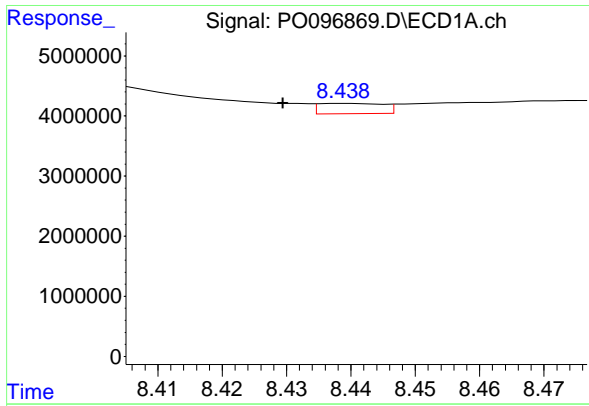
#34 AR-1260-4

R.T.: 8.088 min  
 Delta R.T.: -0.007 min  
 Response: 4255105  
 Conc: 38.06 ng/ml



#34 AR-1260-4

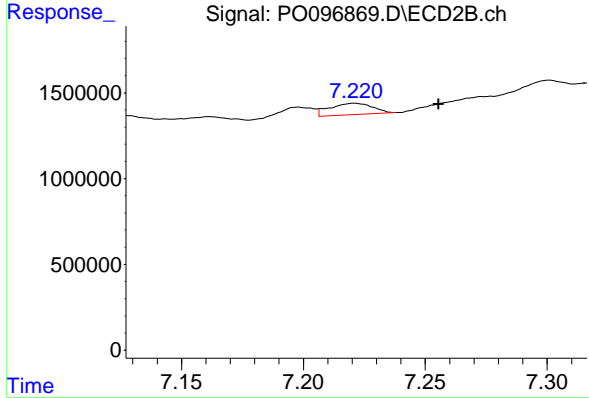
R.T.: 7.024 min  
 Delta R.T.: 0.012 min  
 Response: 370764  
 Conc: 5.79 ng/ml



#35 AR-1260-5

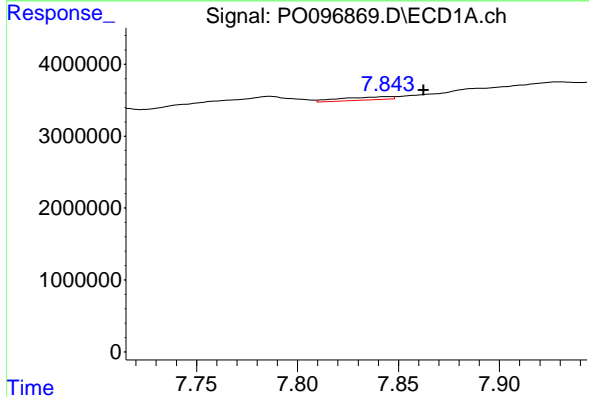
R.T.: 8.439 min  
 Delta R.T.: 0.010 min  
 Response: 1215050  
 Conc: 5.79 ng/ml

Instrument :  
 ECD\_O  
 ClientSampleId :



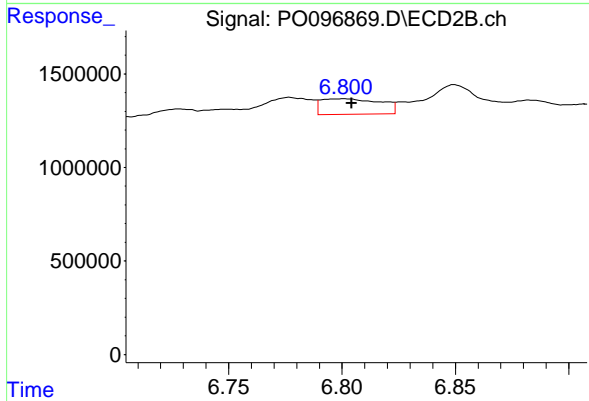
#35 AR-1260-5

R.T.: 7.221 min  
 Delta R.T.: -0.034 min  
 Response: 815620  
 Conc: 5.88 ng/ml



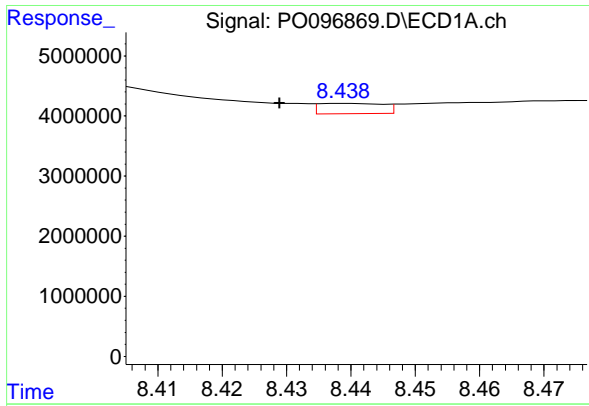
#36 AR-1262-1

R.T.: 7.845 min  
 Delta R.T.: -0.018 min  
 Response: 762812  
 Conc: 5.14 ng/ml



#36 AR-1262-1

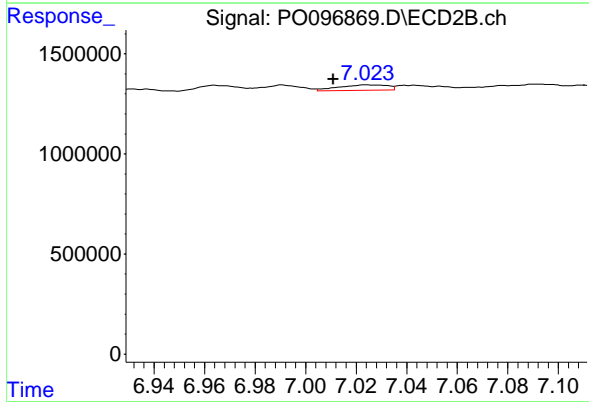
R.T.: 6.801 min  
 Delta R.T.: -0.004 min  
 Response: 1518952  
 Conc: 38.58 ng/ml



#37 AR-1262-2

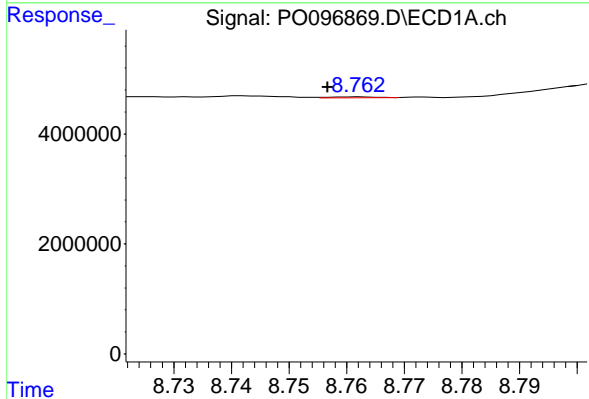
R.T.: 8.439 min  
 Delta R.T.: 0.010 min  
 Response: 1215050  
 Conc: 5.25 ng/ml

Instrument :  
 ECD\_O  
 ClientSampleId :



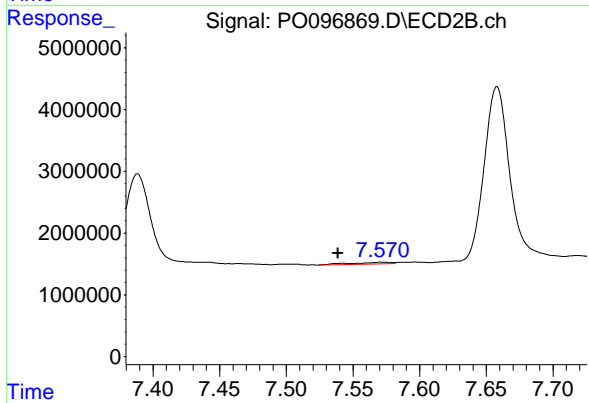
#37 AR-1262-2

R.T.: 7.024 min  
 Delta R.T.: 0.013 min  
 Response: 370764  
 Conc: 4.57 ng/ml



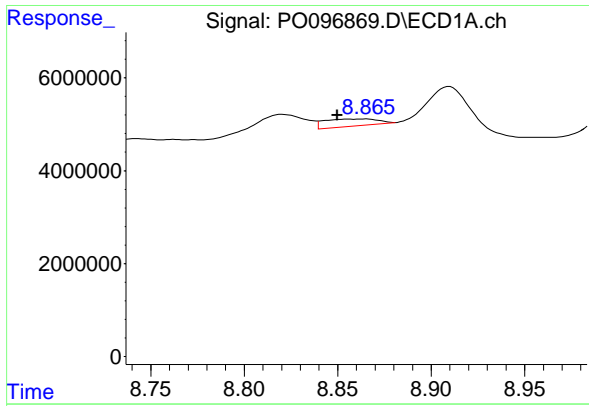
#38 AR-1262-3

R.T.: 8.762 min  
 Delta R.T.: 0.005 min  
 Response: 92740  
 Conc: 0.56 ng/ml



#38 AR-1262-3

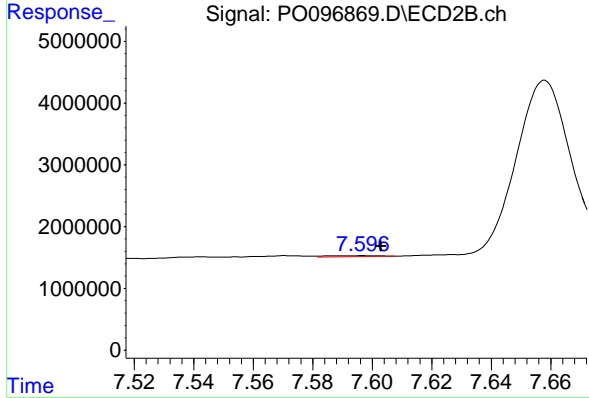
R.T.: 7.572 min  
 Delta R.T.: 0.033 min  
 Response: 548642  
 Conc: 8.55 ng/ml



#39 AR-1262-4

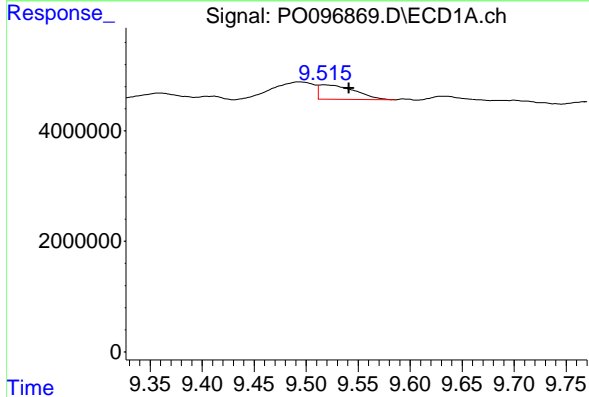
R.T.: 8.865 min  
 Delta R.T.: 0.016 min  
 Response: 3062273  
 Conc: 42.00 ng/ml

Instrument :  
 ECD\_O  
 ClientSampleId :



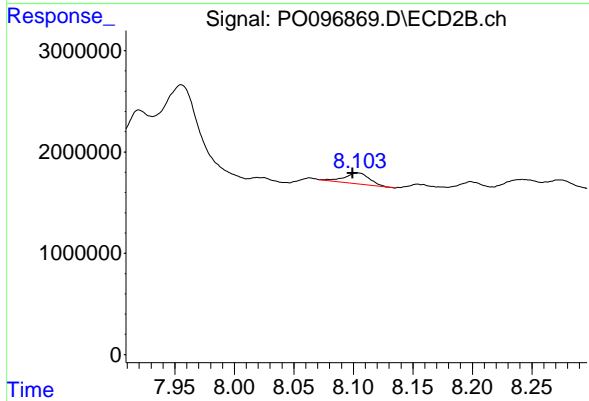
#39 AR-1262-4

R.T.: 7.597 min  
 Delta R.T.: -0.006 min  
 Response: 188262  
 Conc: 1.66 ng/ml



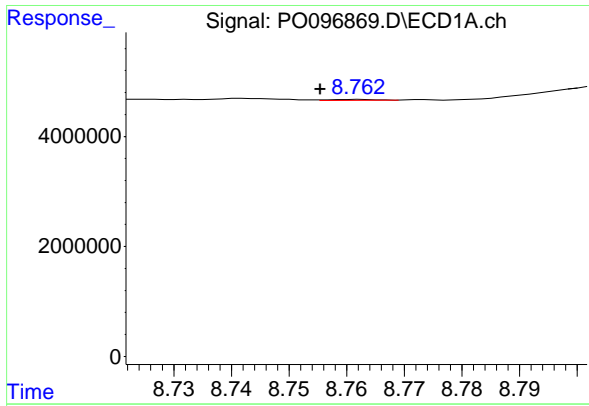
#40 AR-1262-5

R.T.: 9.517 min  
 Delta R.T.: -0.024 min  
 Response: 6126847  
 Conc: 73.57 ng/ml



#40 AR-1262-5

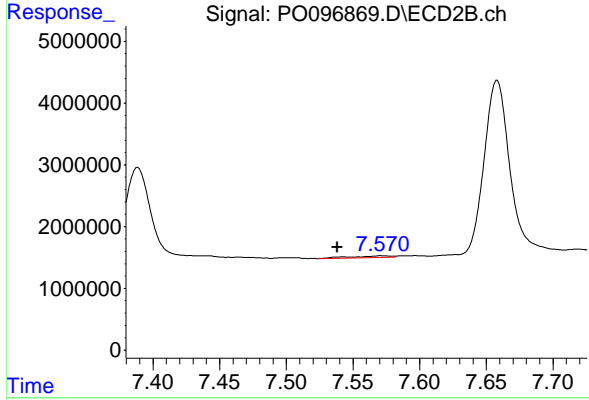
R.T.: 8.103 min  
 Delta R.T.: 0.004 min  
 Response: 1571134  
 Conc: 29.92 ng/ml



#41 AR-1268-1

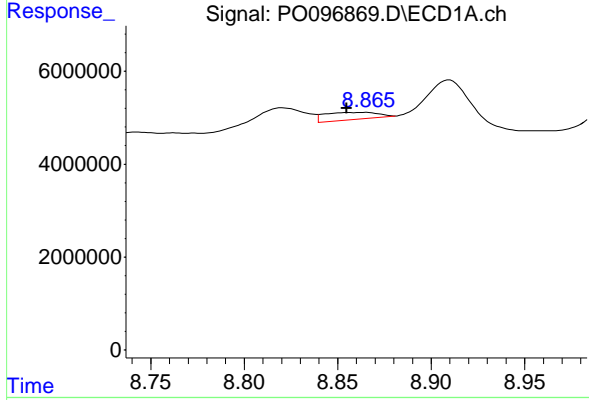
R.T.: 8.762 min  
 Delta R.T.: 0.007 min  
 Response: 92740  
 Conc: 0.30 ng/ml

Instrument :  
 ECD\_O  
 ClientSampleId :



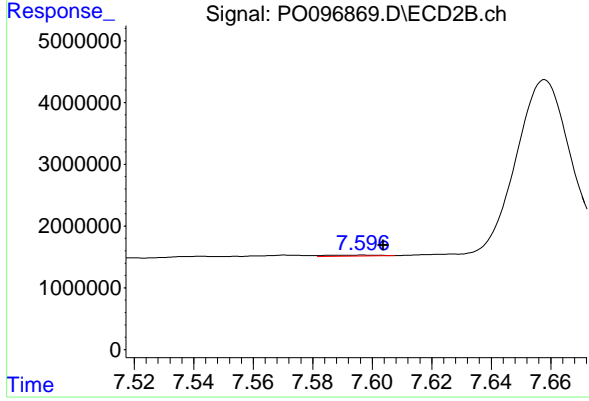
#41 AR-1268-1

R.T.: 7.572 min  
 Delta R.T.: 0.033 min  
 Response: 548642  
 Conc: 2.96 ng/ml



#42 AR-1268-2

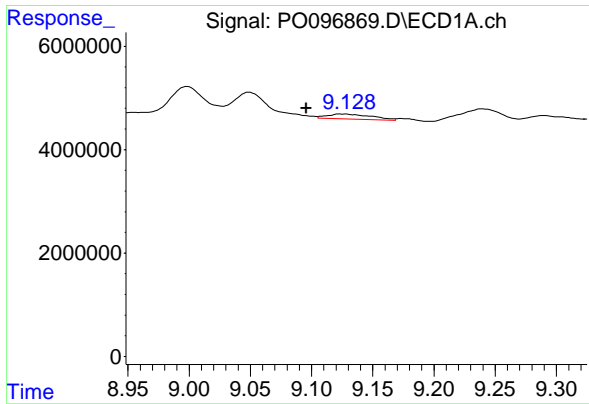
R.T.: 8.865 min  
 Delta R.T.: 0.011 min  
 Response: 3062273  
 Conc: 11.17 ng/ml



#42 AR-1268-2

R.T.: 7.597 min  
 Delta R.T.: -0.007 min  
 Response: 188262  
 Conc: 1.12 ng/ml

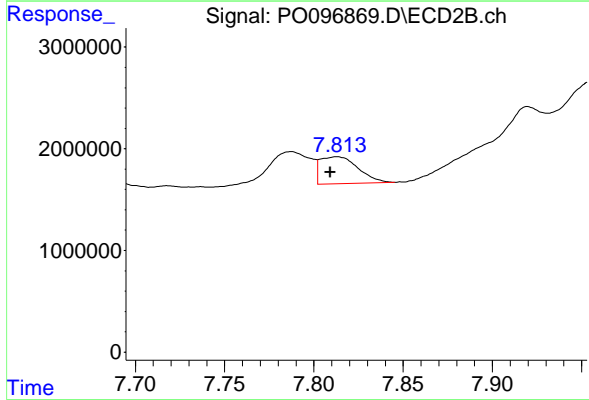




#43 AR-1268-3

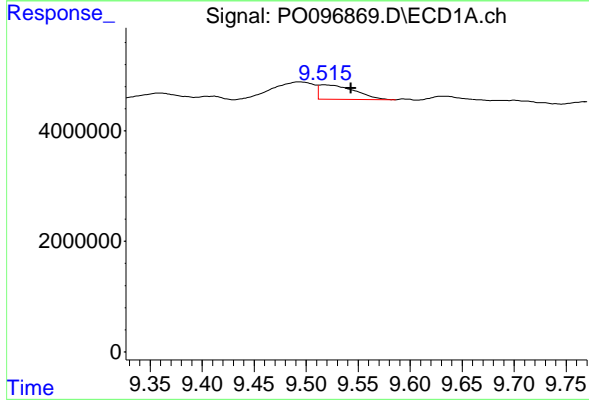
R.T.: 9.127 min  
 Delta R.T.: 0.032 min  
 Response: 2357716  
 Conc: 9.23 ng/ml

Instrument :  
 ECD\_O  
 ClientSampleId :



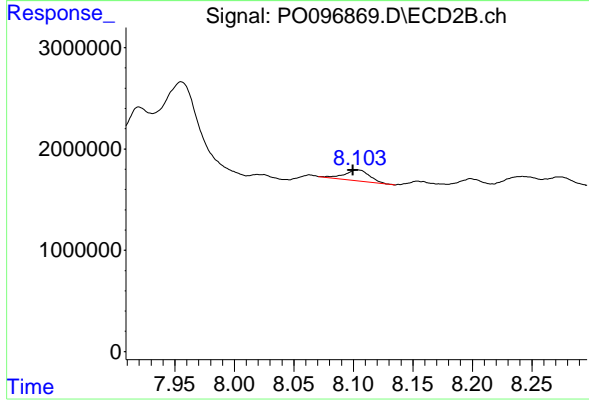
#43 AR-1268-3

R.T.: 7.813 min  
 Delta R.T.: 0.004 min  
 Response: 3889500  
 Conc: 26.92 ng/ml



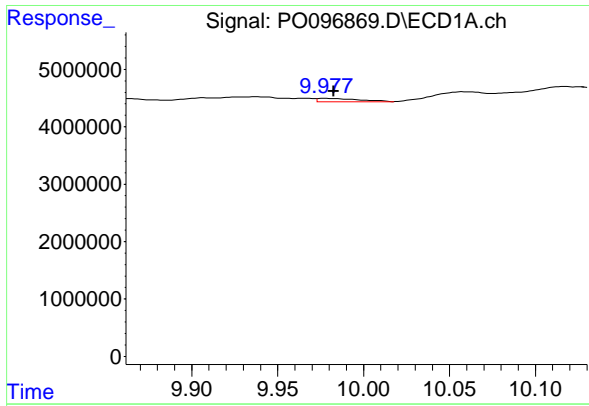
#44 AR-1268-4

R.T.: 9.517 min  
 Delta R.T.: -0.026 min  
 Response: 6126847  
 Conc: 66.08 ng/ml



#44 AR-1268-4

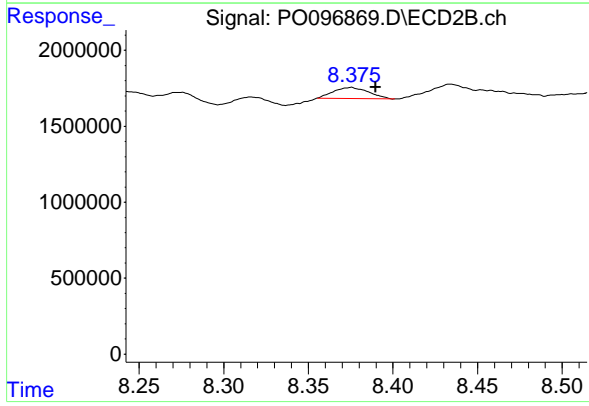
R.T.: 8.103 min  
 Delta R.T.: 0.004 min  
 Response: 1571134  
 Conc: 26.37 ng/ml



#45 AR-1268-5

R.T.: 9.977 min  
Delta R.T.: -0.005 min  
Response: 968555  
Conc: 1.20 ng/ml

Instrument :  
ECD\_O  
ClientSampleId :



#45 AR-1268-5

R.T.: 8.375 min  
Delta R.T.: -0.015 min  
Response: 1051479  
Conc: 2.53 ng/ml