

Data Path : Z:\pestpcbsrv\HPCHEM1\ECD\_O\Data\P0080923\  
 Data File : P0096870.D  
 Signal(s) : Signal #1: ECD1A.ch Signal #2: ECD2B.ch  
 Acq On : 09 Aug 2023 23:41  
 Operator : YP/AJ  
 Sample : AR1660CCC500  
 Misc :  
 ALS Vial : 3 Sample Multiplier: 1

Instrument :  
 ECD\_O  
 ClientSampleId :

Integration File signal 1: autoint1.e  
 Integration File signal 2: autoint2.e  
 Quant Time: Aug 10 01:38:39 2023  
 Quant Method : Z:\pestpcbsrv\HPCHEM1\ECD\_O\methods\P0080723.M  
 Quant Title : GC EXTRACTABLES  
 QLast Update : Tue Aug 08 04:34:41 2023  
 Response via : Initial Calibration  
 Integrator: ChemStation

Volume Inj. : 2 µl  
 Signal #1 Phase : ZB-MR2 Signal #2 Phase: ZB-MR2  
 Signal #1 Info : 30Mx0.32mmx 0.50µ Signal #2 Info : 30M x 0.32mm x 0.25µm

Compound	RT#1	RT#2	Resp#1	Resp#2	ng/ml	ng/ml
-----						
System Monitoring Compounds						
1) SA Tetrachlo...	4.411	3.619	184.0E6	73874874	55.593	55.805
2) SA Decachlor...	10.352	8.640	121.1E6	59128652	55.353	51.108
Target Compounds						
3) L1 AR-1016-1	5.597	4.705	51429720	24074006	546.058	542.990
4) L1 AR-1016-2	5.619	4.723	73118050	33617695	546.577	549.571
5) L1 AR-1016-3	5.682	4.900	45372803	18339875	521.400	561.394
6) L1 AR-1016-4	5.783	4.942	36167835	14683373	538.449	513.649
7) L1 AR-1016-5	6.084	5.156	38534120	22654379	551.930	589.245
8) L2 AR-1221-1	4.619	3.831	6909851	2660705	169.546	153.292
9) L2 AR-1221-2	4.710	3.918	9698304	4000068	319.235	309.586
10) L2 AR-1221-3	4.787	3.994	32601811	14113420	372.458	355.555
11) L3 AR-1232-1	4.787	3.994	32601811	14113420	447.008	436.312
12) L3 AR-1232-2	5.324	4.723	43769431	33617695	1104.008	1165.155
13) L3 AR-1232-3	5.619	4.900	73118050	18339875	1195.273	1209.606
14) L3 AR-1232-4	5.783	4.984	36167835	19814380	1185.293	1325.850
15) L3 AR-1232-5	5.876	5.156	34344755	22654379	1227.336	1385.862
16) L4 AR-1242-1	5.597	4.705	51429720	24074006	613.596	610.629
17) L4 AR-1242-2	5.619	4.723	73118050	33617695	620.898	616.942
18) L4 AR-1242-3	5.682	4.900	45372803	18339875	614.205	620.249
19) L4 AR-1242-4	5.783	4.984	36167835	19814380	607.553	628.751
20) L4 AR-1242-5	6.536	5.509	8521593	21021795	154.882	576.948 #
21) L5 AR-1248-1	5.597	4.705	51429720	24074006	877.729	857.870
22) L5 AR-1248-2	5.876	4.942	34344755	14683373	365.301	346.461
23) L5 AR-1248-3	6.084	4.984	38534120	19814380	393.974	451.712
24) L5 AR-1248-4	6.496	5.156	10565542	22654379	116.305	443.769 #
25) L5 AR-1248-5	6.536	5.549	8521593	6947023	96.742	148.594 #
26) L6 AR-1254-1	6.470	5.509	28663485	21021795	262.268	284.863
27) L6 AR-1254-2	6.694	5.657	28469062	16606880	176.577	252.077 #
28) L6 AR-1254-3	7.071	6.077	13923821	26055418	88.858	257.815 #
29) L6 AR-1254-4	7.364	6.291	11565843	1962458	114.720	33.909 #
30) L6 AR-1254-5	7.794	6.710	79784879	44501629	711.004	506.189 #
31) L7 AR-1260-1	7.240	6.192	70197747	36669730	558.508	521.113
32) L7 AR-1260-2	7.503	6.382	74727729	44013662	554.627	527.343
33) L7 AR-1260-3	7.872	6.535	53336421	39419694	513.967	510.488
34) L7 AR-1260-4	8.105	7.008	61987762	31998106	554.434	499.329
35) L7 AR-1260-5	8.439	7.252	123.8E6	72942831	589.792	526.154
36) L8 AR-1262-1	7.872	6.802	53336421	17888706	359.103	454.389 #
37) L8 AR-1262-2	8.439	7.008	123.8E6	31998106	535.039	394.526 #
38) L8 AR-1262-3	8.780	7.536	74385027	16244966	445.957	253.143 #
39) L8 AR-1262-4	8.841	7.600	27118973	52119034	371.966	458.792
40) L8 AR-1262-5	9.553	8.097	32971049	18279283	395.915	348.058
41) L9 AR-1268-1	8.780	7.536	74385027	16244966	241.978	87.673 #

Data Path : Z:\pestpcbsrv\HPCHEM1\ECD\_0\Data\P0080923\  
 Data File : P0096870.D  
 Signal(s) : Signal #1: ECD1A.ch Signal #2: ECD2B.ch  
 Acq On : 09 Aug 2023 23:41  
 Operator : YP/AJ  
 Sample : AR1660CCC500  
 Misc :  
 ALS Vial : 3 Sample Multiplier: 1

Instrument :  
 ECD\_0  
 ClientSampleId :

Integration File signal 1: autoint1.e  
 Integration File signal 2: autoint2.e  
 Quant Time: Aug 10 01:38:39 2023  
 Quant Method : Z:\pestpcbsrv\HPCHEM1\ECD\_0\methods\P0080723.M  
 Quant Title : GC EXTRACTABLES  
 QLast Update : Tue Aug 08 04:34:41 2023  
 Response via : Initial Calibration  
 Integrator: ChemStation

Volume Inj. : 2 µl  
 Signal #1 Phase : ZB-MR1 Signal #2 Phase: ZB-MR2  
 Signal #1 Info : 30Mx0.32mmx 0.50µ Signal #2 Info : 30M x 0.32mm x 0.25µm

	Compound	RT#1	RT#2	Resp#1	Resp#2	ng/ml	ng/ml
42)	L9 AR-1268-2	8.862	7.600	19627488	52119034	71.582	310.810 #
43)	L9 AR-1268-3	9.105	7.806	1441770	1127673	5.645	7.805 #
44)	L9 AR-1268-4	9.553	8.097	32971049	18279283	355.625	306.838
45)	L9 AR-1268-5	9.993	8.387	14475266	4908808	17.920	11.802 #

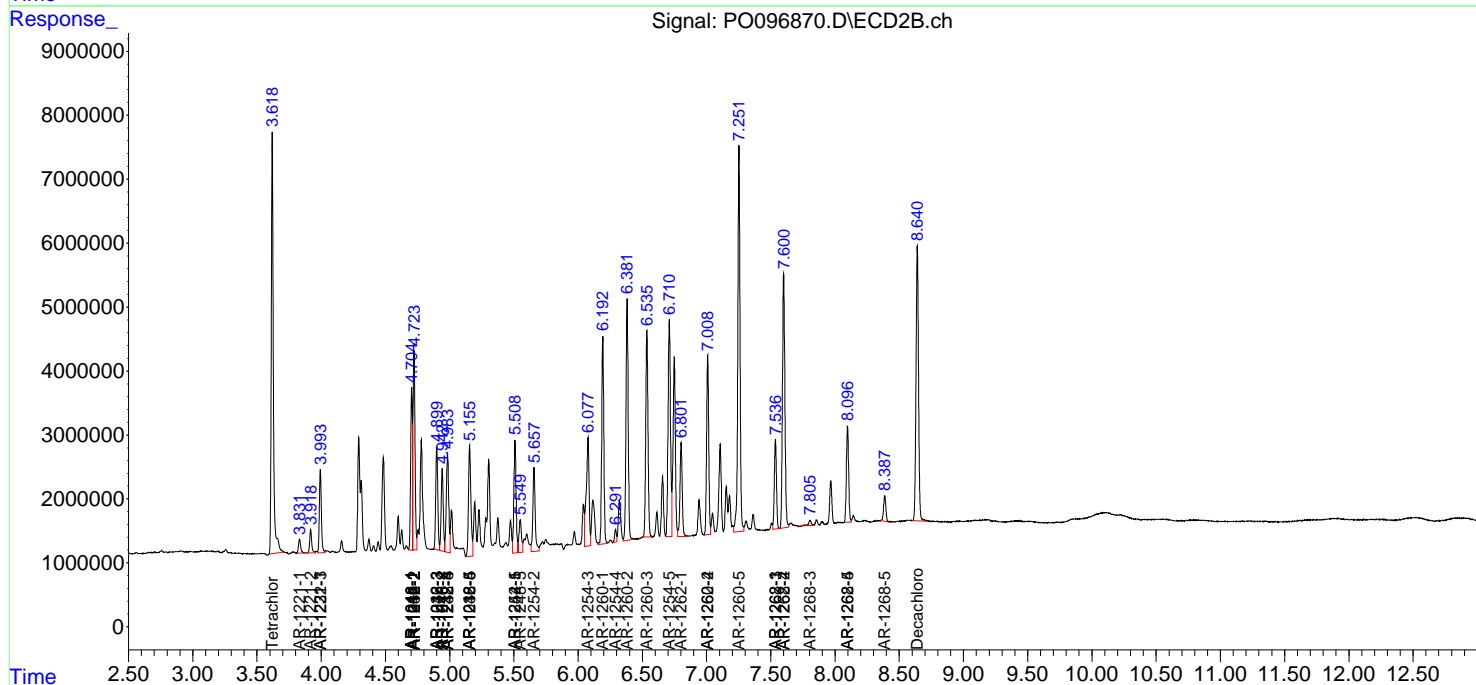
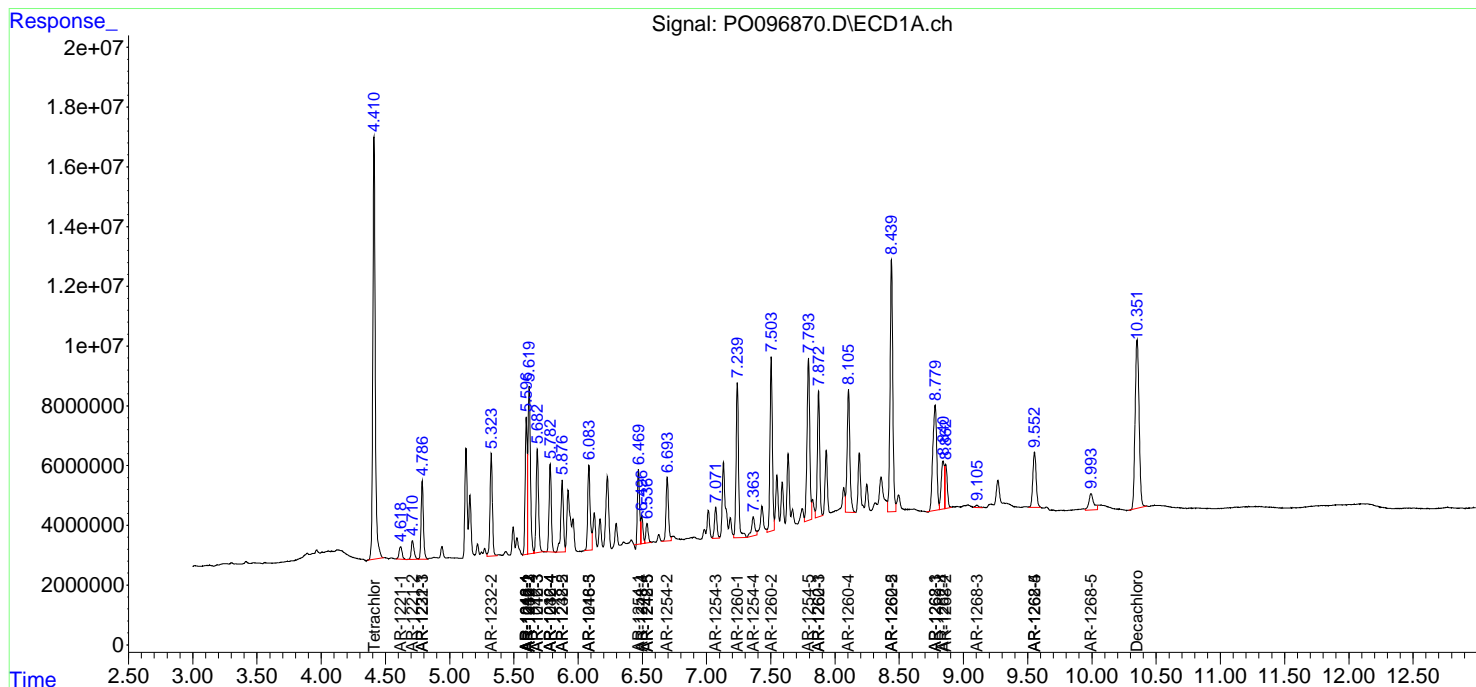
(f)=RT Delta > 1/2 Window (#)=Amounts differ by > 25% (m)=manual int.

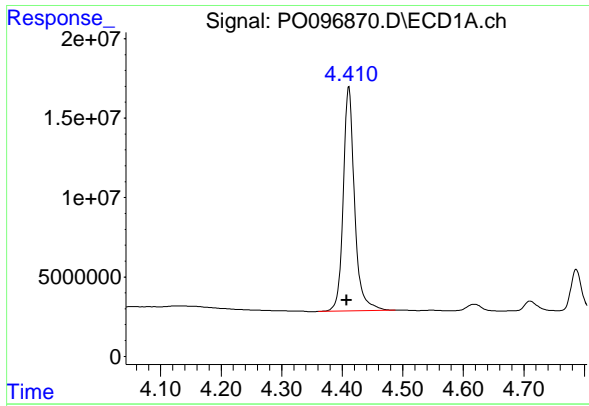
Data Path : Z:\pestpcbsrv\HPCHEM1\ECD\_O\Data\PO080923\  
 Data File : PO096870.D  
 Signal(s) : Signal #1: ECD1A.ch Signal #2: ECD2B.ch  
 Acq On : 09 Aug 2023 23:41  
 Operator : YP/AJ  
 Sample : AR1660CCC500  
 Misc :  
 ALS Vial : 3 Sample Multiplier: 1

Instrument :  
 ECD\_O  
 ClientSampleId :

Integration File signal 1: autoint1.e  
 Integration File signal 2: autoint2.e  
 Quant Time: Aug 10 01:38:39 2023  
 Quant Method : Z:\pestpcbsrv\HPCHEM1\ECD\_O\methods\PO080723.M  
 Quant Title : GC EXTRACTABLES  
 QLast Update : Tue Aug 08 04:34:41 2023  
 Response via : Initial Calibration  
 Integrator: ChemStation

Volume Inj. : 2 µl  
 Signal #1 Phase : ZB-MR1 Signal #2 Phase: ZB-MR2  
 Signal #1 Info : 30Mx0.32mmx 0.50µm Signal #2 Info : 30M x 0.32mm x 0.25µm

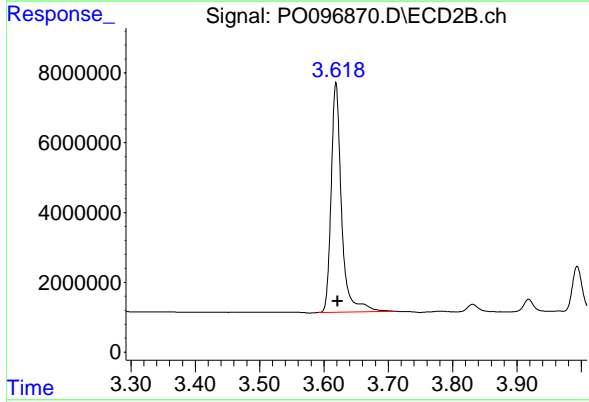




#1 Tetrachloro-m-xylene

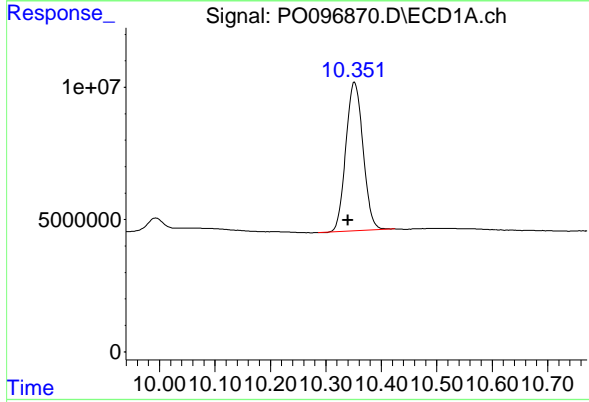
R.T.: 4.411 min  
 Delta R.T.: 0.004 min  
 Response: 184022995  
 Conc: 55.59 ng/ml

Instrument :  
 ECD\_O  
 ClientSampleId :



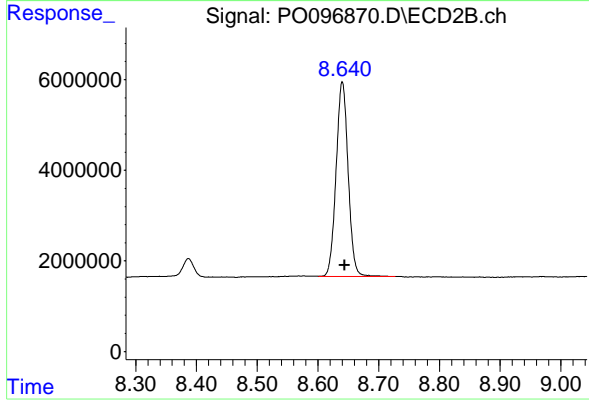
#1 Tetrachloro-m-xylene

R.T.: 3.619 min  
 Delta R.T.: -0.002 min  
 Response: 73874874  
 Conc: 55.81 ng/ml



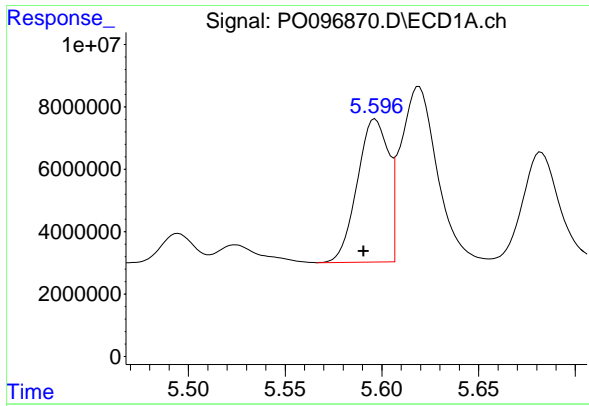
#2 Decachlorobiphenyl

R.T.: 10.352 min  
 Delta R.T.: 0.012 min  
 Response: 121122801  
 Conc: 55.35 ng/ml



#2 Decachlorobiphenyl

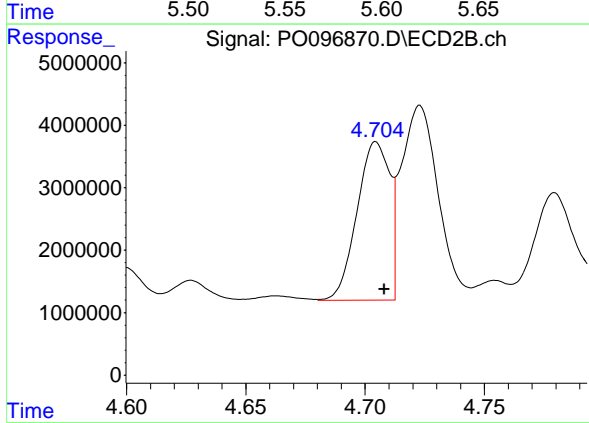
R.T.: 8.640 min  
 Delta R.T.: -0.004 min  
 Response: 59128652  
 Conc: 51.11 ng/ml



#3 AR-1016-1

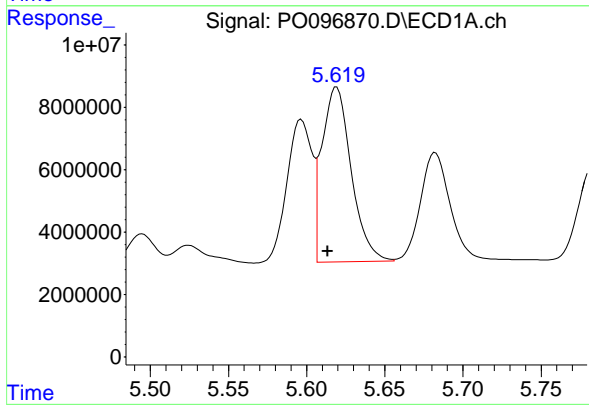
R.T.: 5.597 min  
 Delta R.T.: 0.006 min  
 Response: 51429720  
 Conc: 546.06 ng/ml

Instrument :  
 ECD\_O  
 ClientSampleId :



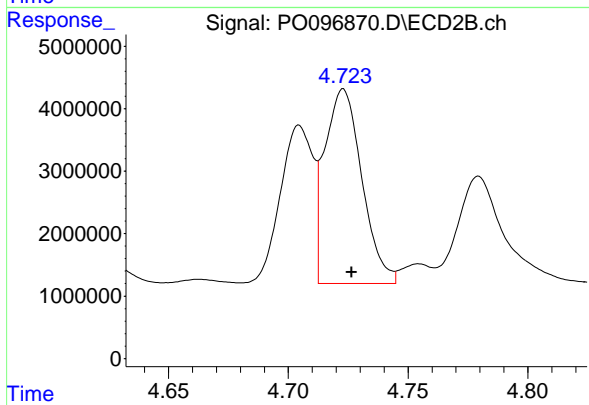
#3 AR-1016-1

R.T.: 4.705 min  
 Delta R.T.: -0.003 min  
 Response: 24074006  
 Conc: 542.99 ng/ml



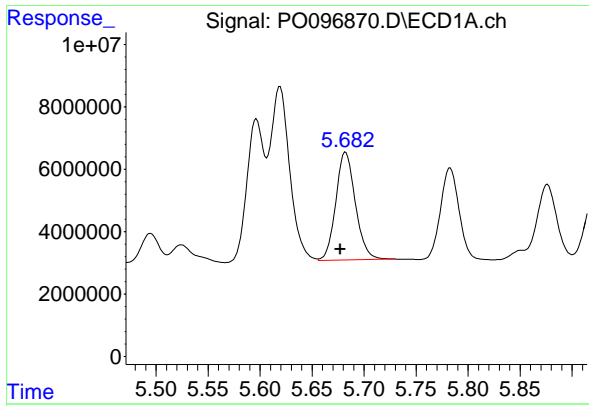
#4 AR-1016-2

R.T.: 5.619 min  
 Delta R.T.: 0.006 min  
 Response: 73118050  
 Conc: 546.58 ng/ml



#4 AR-1016-2

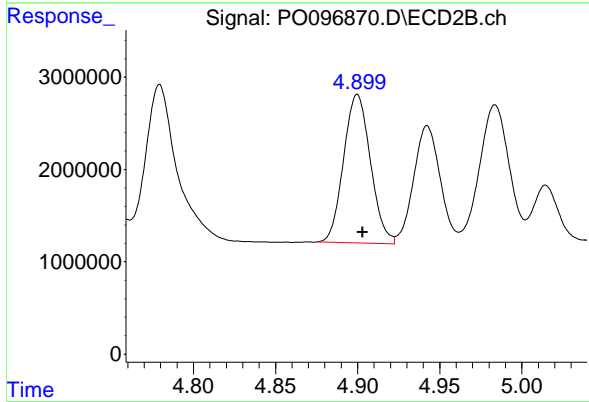
R.T.: 4.723 min  
 Delta R.T.: -0.003 min  
 Response: 33617695  
 Conc: 549.57 ng/ml



#5 AR-1016-3

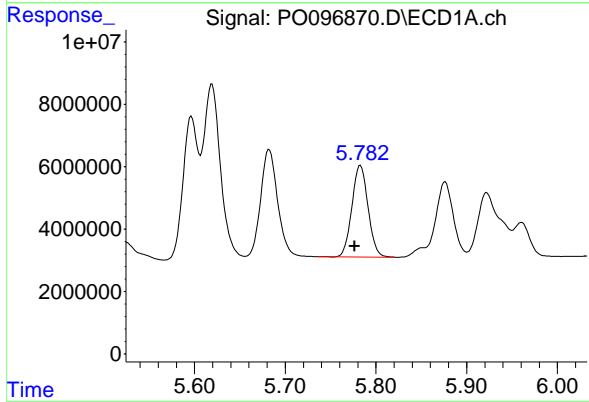
R.T.: 5.682 min  
 Delta R.T.: 0.005 min  
 Response: 45372803  
 Conc: 521.40 ng/ml

Instrument :  
 ECD\_O  
 ClientSampleId :



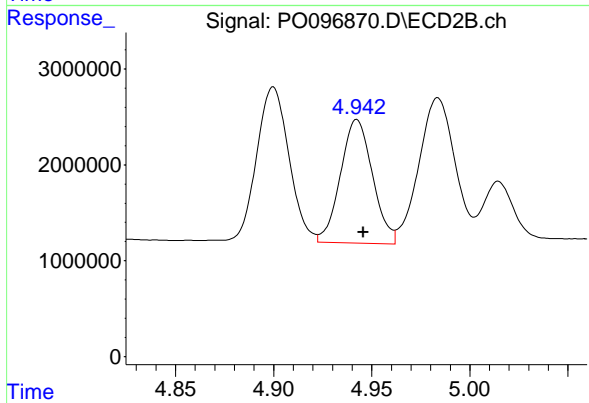
#5 AR-1016-3

R.T.: 4.900 min  
 Delta R.T.: -0.003 min  
 Response: 18339875  
 Conc: 561.39 ng/ml



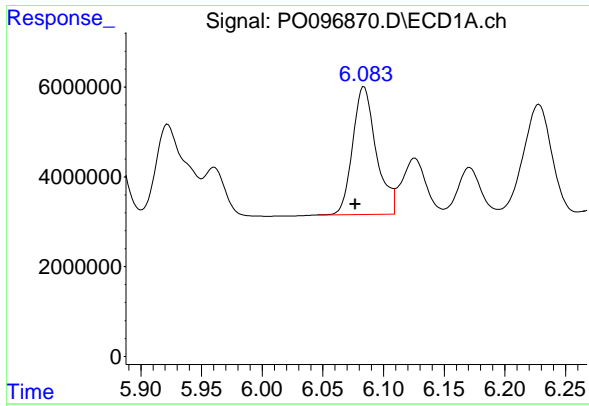
#6 AR-1016-4

R.T.: 5.783 min  
 Delta R.T.: 0.006 min  
 Response: 36167835  
 Conc: 538.45 ng/ml



#6 AR-1016-4

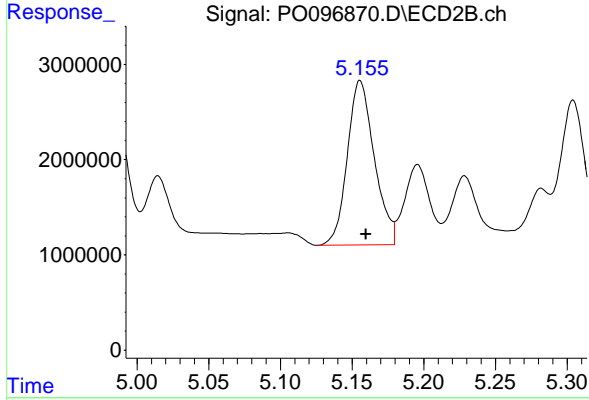
R.T.: 4.942 min  
 Delta R.T.: -0.003 min  
 Response: 14683373  
 Conc: 513.65 ng/ml



#7 AR-1016-5

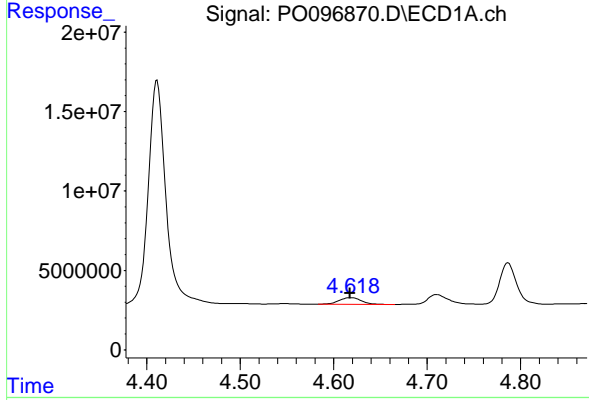
R.T.: 6.084 min  
 Delta R.T.: 0.007 min  
 Response: 38534120  
 Conc: 551.93 ng/ml

Instrument :  
 ECD\_O  
 ClientSampleId :



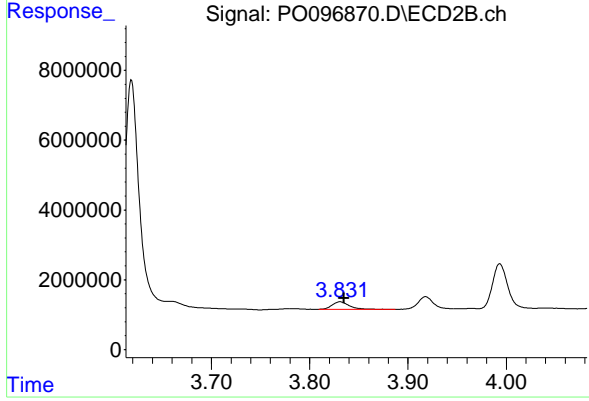
#7 AR-1016-5

R.T.: 5.156 min  
 Delta R.T.: -0.004 min  
 Response: 22654379  
 Conc: 589.24 ng/ml



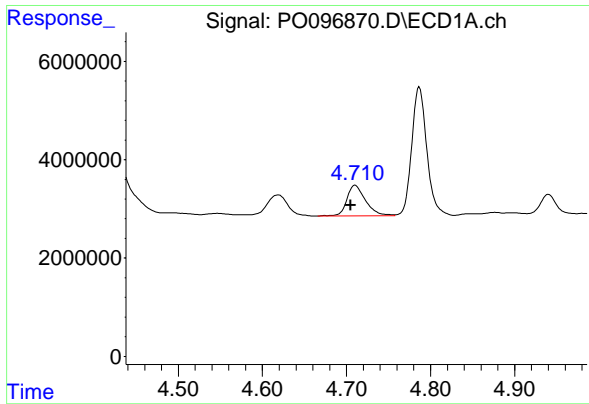
#8 AR-1221-1

R.T.: 4.619 min  
 Delta R.T.: 0.001 min  
 Response: 6909851  
 Conc: 169.55 ng/ml



#8 AR-1221-1

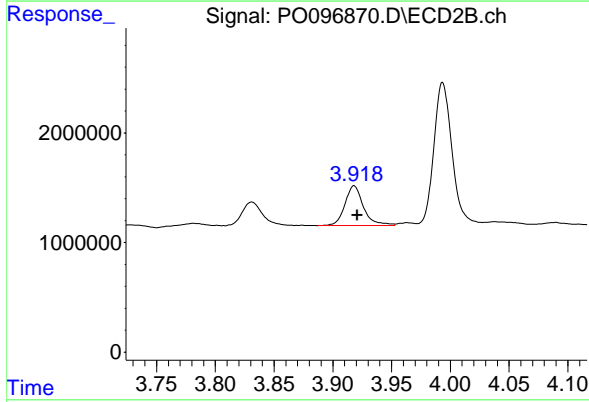
R.T.: 3.831 min  
 Delta R.T.: -0.004 min  
 Response: 2660705  
 Conc: 153.29 ng/ml



#9 AR-1221-2

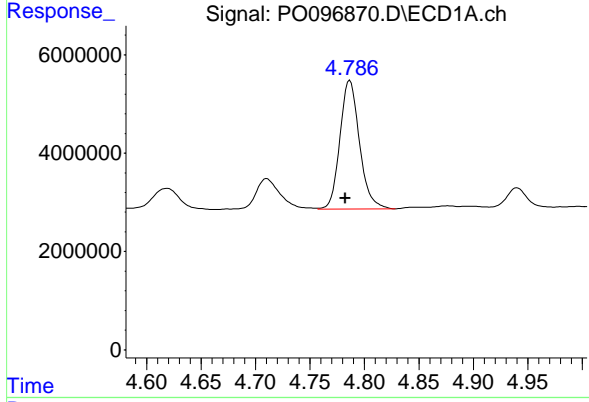
R.T.: 4.710 min  
 Delta R.T.: 0.005 min  
 Response: 9698304  
 Conc: 319.23 ng/ml

Instrument :  
 ECD\_O  
 ClientSampleId :



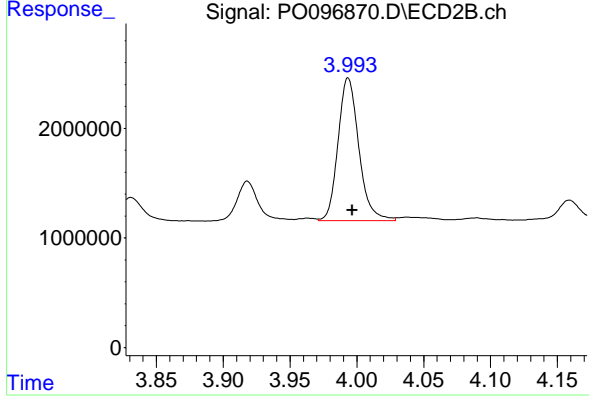
#9 AR-1221-2

R.T.: 3.918 min  
 Delta R.T.: -0.003 min  
 Response: 4000068  
 Conc: 309.59 ng/ml



#10 AR-1221-3

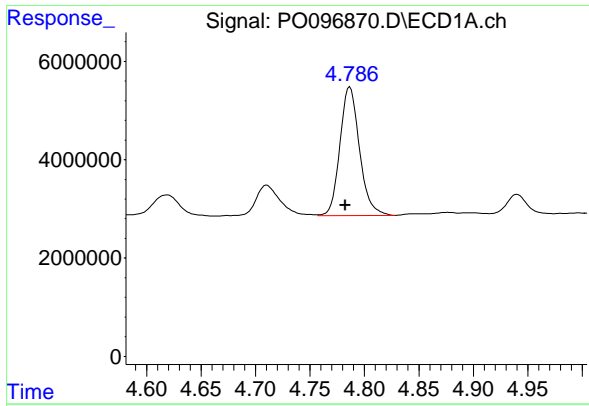
R.T.: 4.787 min  
 Delta R.T.: 0.004 min  
 Response: 32601811  
 Conc: 372.46 ng/ml



#10 AR-1221-3

R.T.: 3.994 min  
 Delta R.T.: -0.003 min  
 Response: 14113420  
 Conc: 355.56 ng/ml

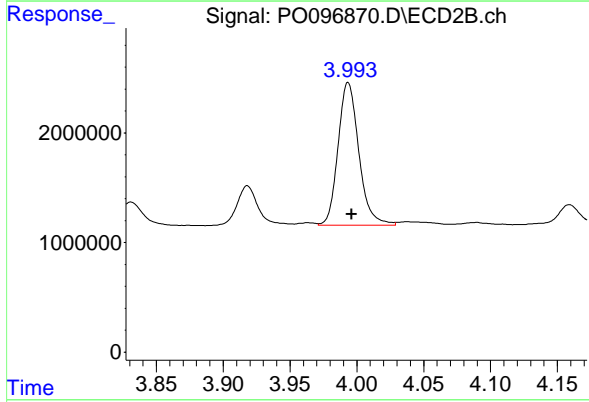




#11 AR-1232-1

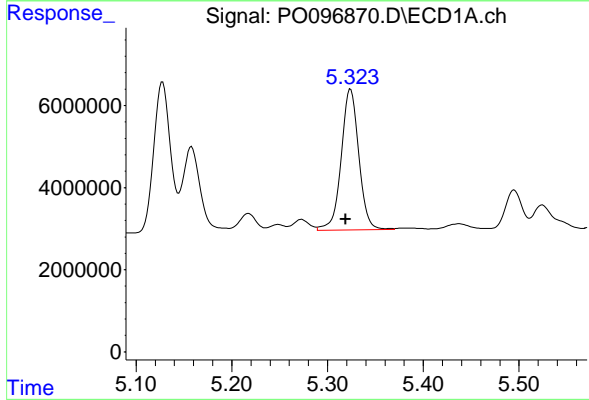
R.T.: 4.787 min  
 Delta R.T.: 0.004 min  
 Response: 32601811  
 Conc: 447.01 ng/ml

Instrument :  
 ECD\_O  
 ClientSampleId :



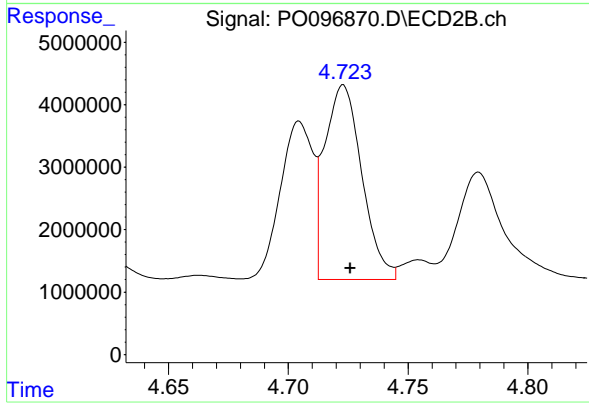
#11 AR-1232-1

R.T.: 3.994 min  
 Delta R.T.: -0.003 min  
 Response: 14113420  
 Conc: 436.31 ng/ml



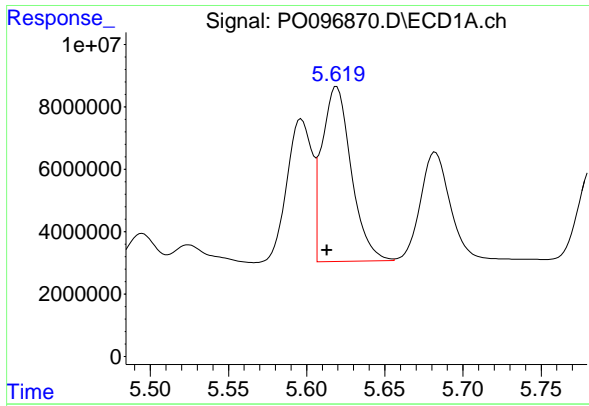
#12 AR-1232-2

R.T.: 5.324 min  
 Delta R.T.: 0.005 min  
 Response: 43769431  
 Conc: 1104.01 ng/ml



#12 AR-1232-2

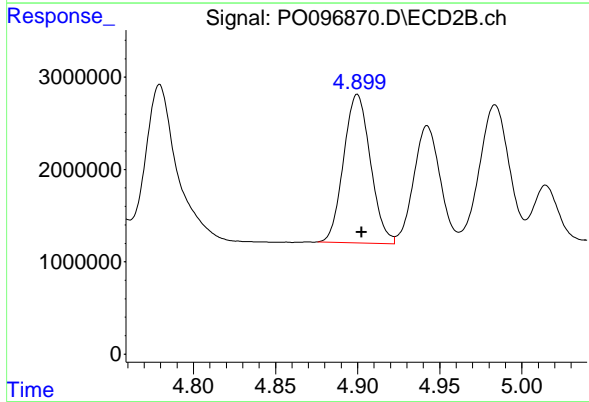
R.T.: 4.723 min  
 Delta R.T.: -0.003 min  
 Response: 33617695  
 Conc: 1165.16 ng/ml



#13 AR-1232-3

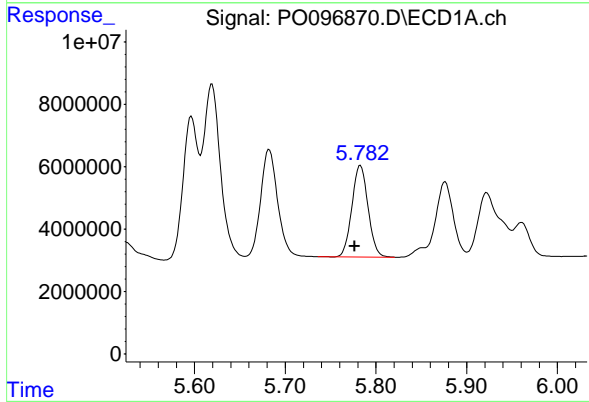
R.T.: 5.619 min  
 Delta R.T.: 0.006 min  
 Response: 73118050  
 Conc: 1195.27 ng/ml

Instrument :  
 ECD\_O  
 ClientSampleId :



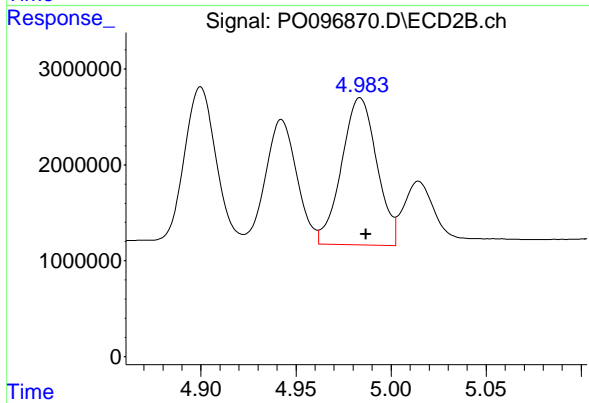
#13 AR-1232-3

R.T.: 4.900 min  
 Delta R.T.: -0.003 min  
 Response: 18339875  
 Conc: 1209.61 ng/ml



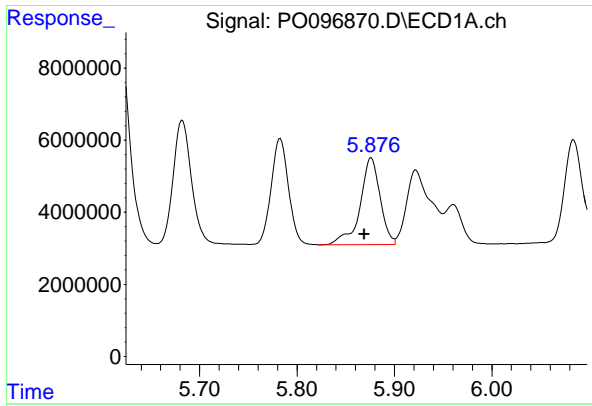
#14 AR-1232-4

R.T.: 5.783 min  
 Delta R.T.: 0.006 min  
 Response: 36167835  
 Conc: 1185.29 ng/ml



#14 AR-1232-4

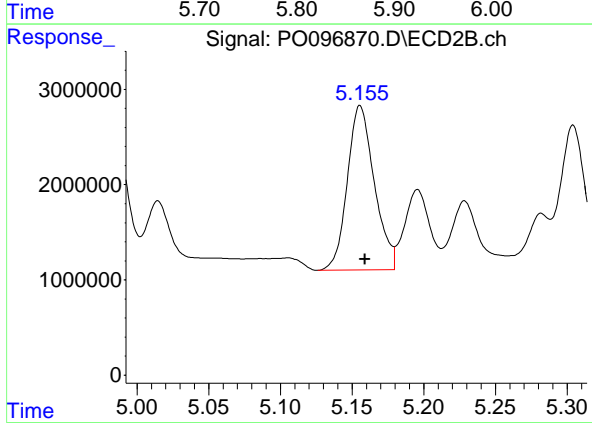
R.T.: 4.984 min  
 Delta R.T.: -0.003 min  
 Response: 19814380  
 Conc: 1325.85 ng/ml



#15 AR-1232-5

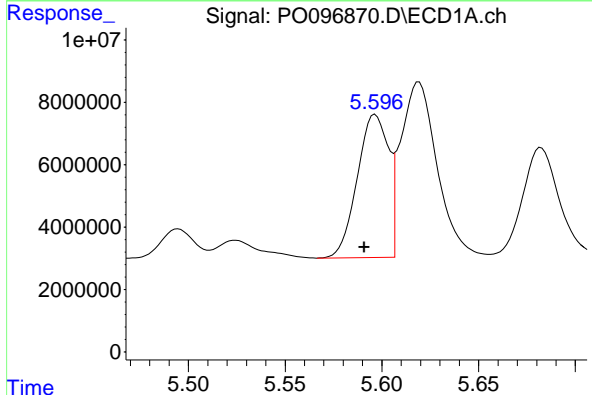
R.T.: 5.876 min  
 Delta R.T.: 0.007 min  
 Response: 34344755  
 Conc: 1227.34 ng/ml

Instrument :  
 ECD\_O  
 ClientSampleId :



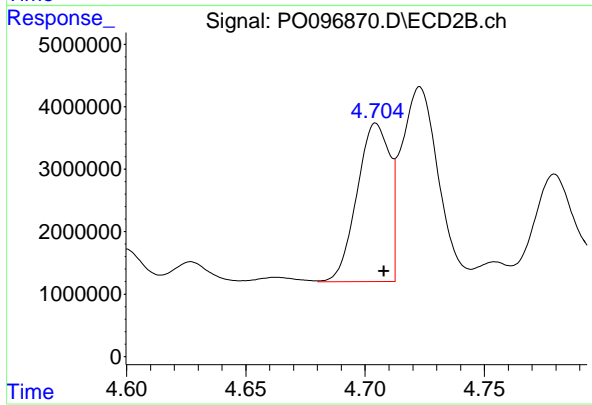
#15 AR-1232-5

R.T.: 5.156 min  
 Delta R.T.: -0.003 min  
 Response: 22654379  
 Conc: 1385.86 ng/ml



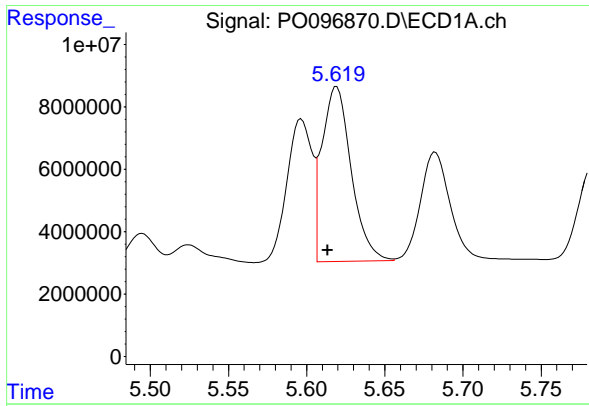
#16 AR-1242-1

R.T.: 5.597 min  
 Delta R.T.: 0.006 min  
 Response: 51429720  
 Conc: 613.60 ng/ml



#16 AR-1242-1

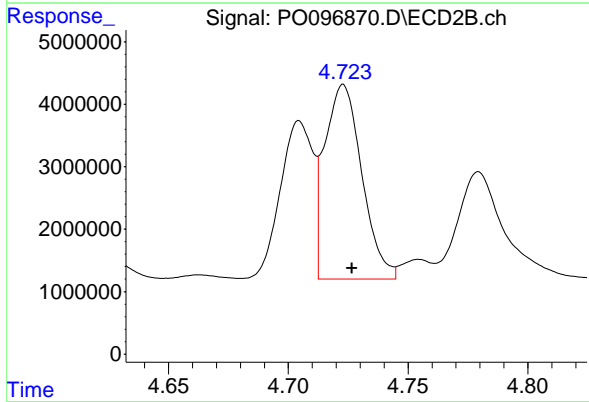
R.T.: 4.705 min  
 Delta R.T.: -0.003 min  
 Response: 24074006  
 Conc: 610.63 ng/ml



#17 AR-1242-2

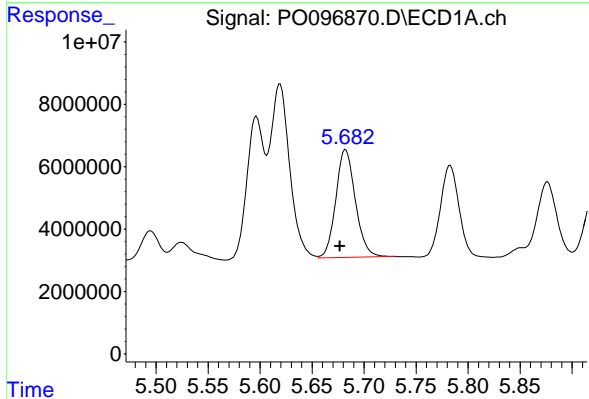
R.T.: 5.619 min  
 Delta R.T.: 0.006 min  
 Response: 73118050  
 Conc: 620.90 ng/ml

Instrument :  
 ECD\_O  
 ClientSampleId :



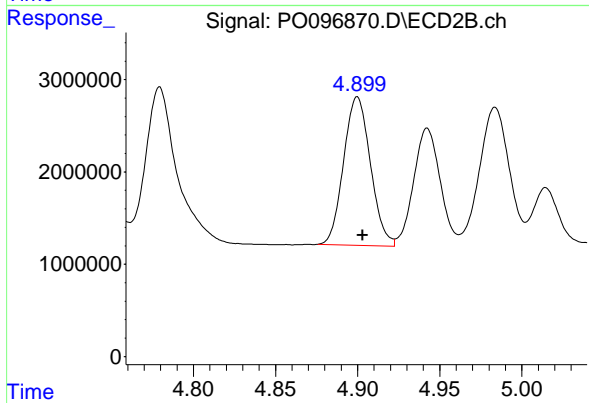
#17 AR-1242-2

R.T.: 4.723 min  
 Delta R.T.: -0.004 min  
 Response: 33617695  
 Conc: 616.94 ng/ml



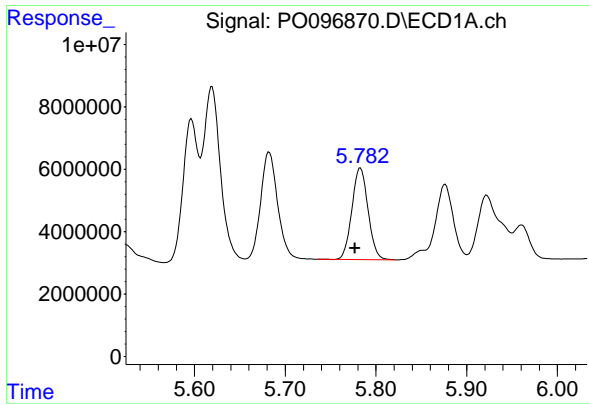
#18 AR-1242-3

R.T.: 5.682 min  
 Delta R.T.: 0.006 min  
 Response: 45372803  
 Conc: 614.20 ng/ml



#18 AR-1242-3

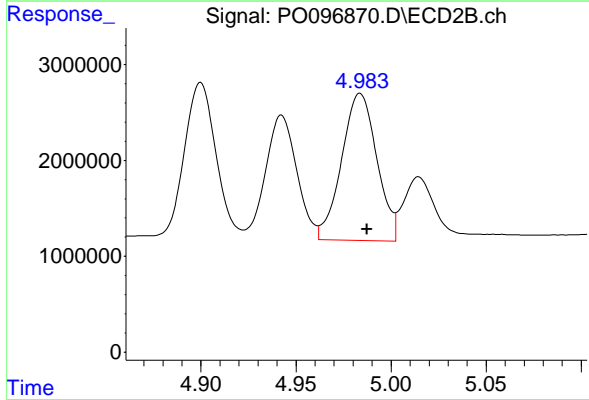
R.T.: 4.900 min  
 Delta R.T.: -0.003 min  
 Response: 18339875  
 Conc: 620.25 ng/ml



#19 AR-1242-4

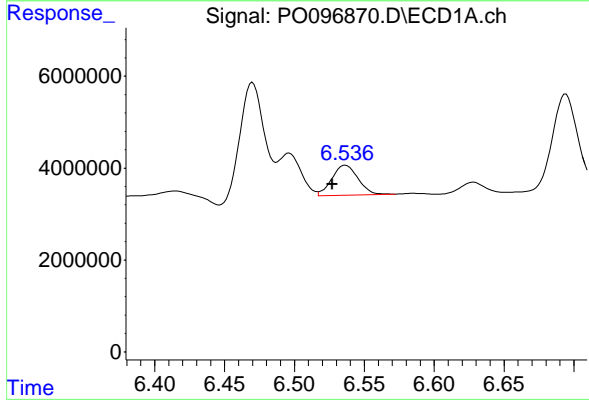
R.T.: 5.783 min  
 Delta R.T.: 0.006 min  
 Response: 36167835  
 Conc: 607.55 ng/ml

Instrument :  
 ECD\_O  
 ClientSampleId :



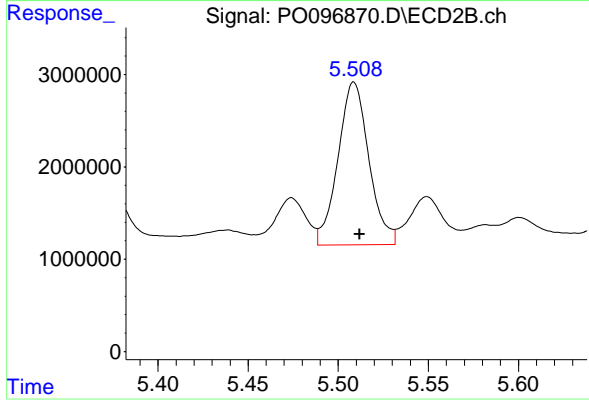
#19 AR-1242-4

R.T.: 4.984 min  
 Delta R.T.: -0.004 min  
 Response: 19814380  
 Conc: 628.75 ng/ml



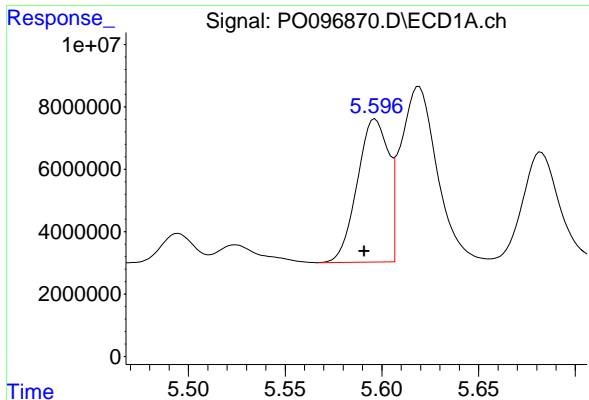
#20 AR-1242-5

R.T.: 6.536 min  
 Delta R.T.: 0.009 min  
 Response: 8521593  
 Conc: 154.88 ng/ml



#20 AR-1242-5

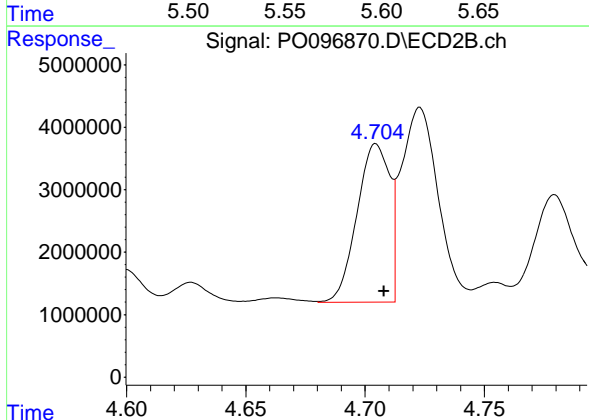
R.T.: 5.509 min  
 Delta R.T.: -0.003 min  
 Response: 21021795  
 Conc: 576.95 ng/ml



#21 AR-1248-1

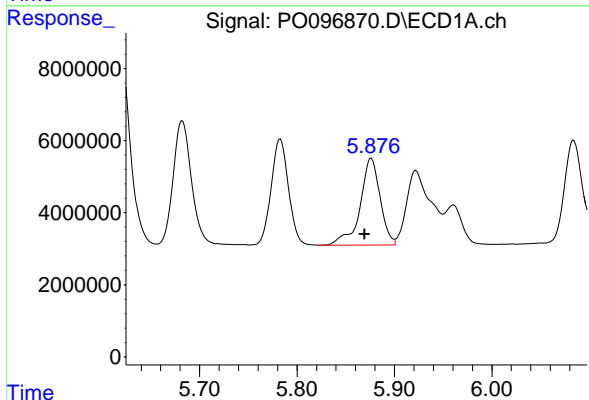
R.T.: 5.597 min  
 Delta R.T.: 0.006 min  
 Response: 51429720  
 Conc: 877.73 ng/ml

Instrument :  
 ECD\_O  
 ClientSampleId :



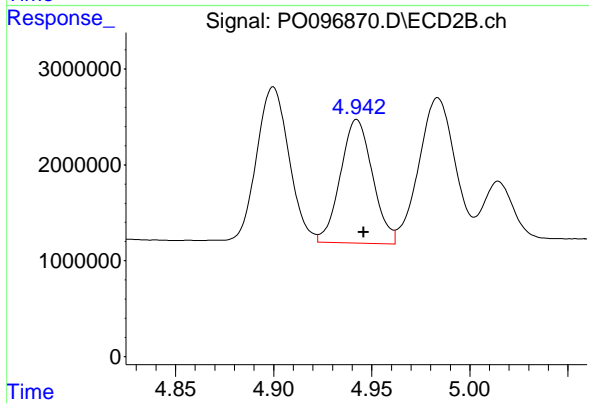
#21 AR-1248-1

R.T.: 4.705 min  
 Delta R.T.: -0.003 min  
 Response: 24074006  
 Conc: 857.87 ng/ml



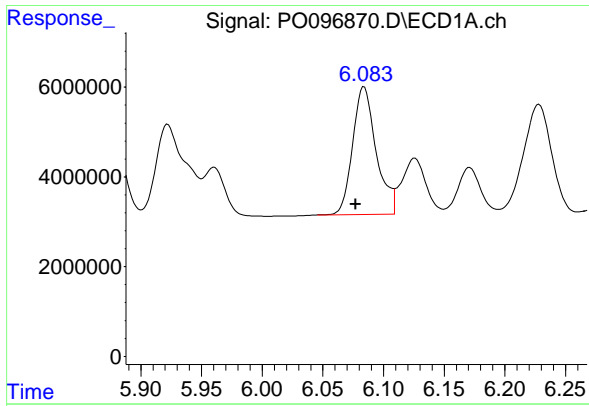
#22 AR-1248-2

R.T.: 5.876 min  
 Delta R.T.: 0.007 min  
 Response: 34344755  
 Conc: 365.30 ng/ml



#22 AR-1248-2

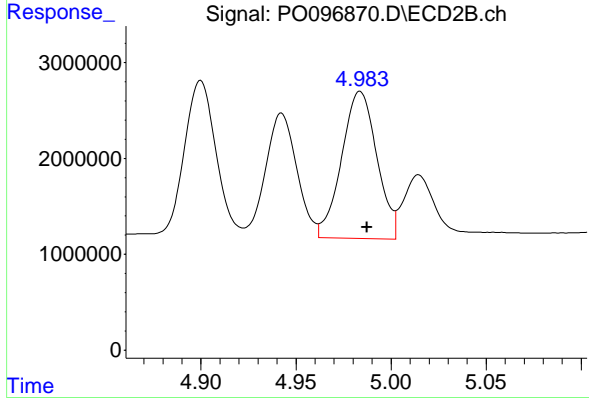
R.T.: 4.942 min  
 Delta R.T.: -0.003 min  
 Response: 14683373  
 Conc: 346.46 ng/ml



#23 AR-1248-3

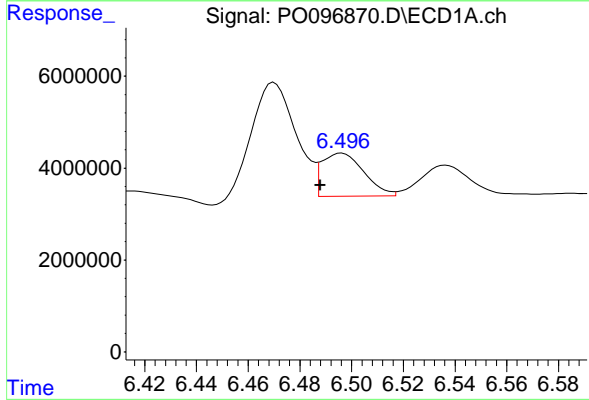
R.T.: 6.084 min  
 Delta R.T.: 0.007 min  
 Response: 38534120  
 Conc: 393.97 ng/ml

Instrument :  
 ECD\_O  
 ClientSampleId :



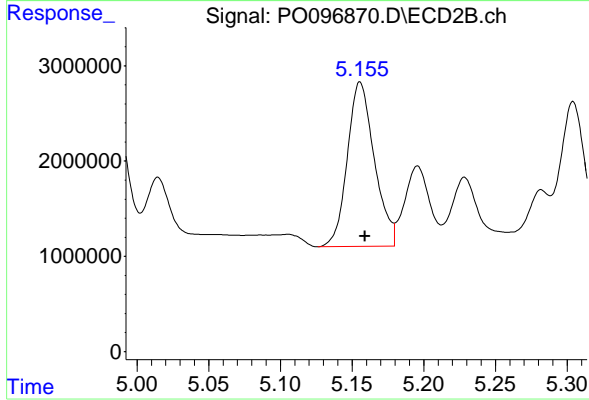
#23 AR-1248-3

R.T.: 4.984 min  
 Delta R.T.: -0.004 min  
 Response: 19814380  
 Conc: 451.71 ng/ml



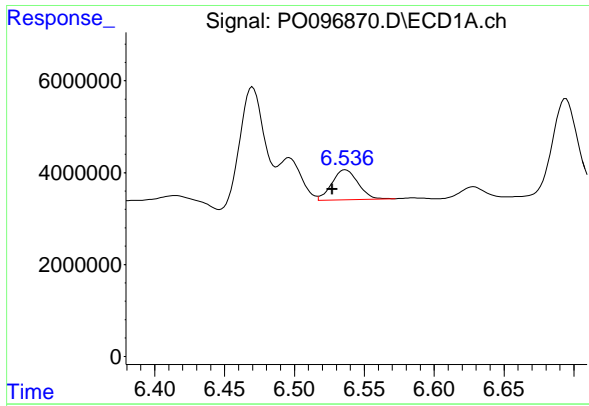
#24 AR-1248-4

R.T.: 6.496 min  
 Delta R.T.: 0.008 min  
 Response: 10565542  
 Conc: 116.30 ng/ml



#24 AR-1248-4

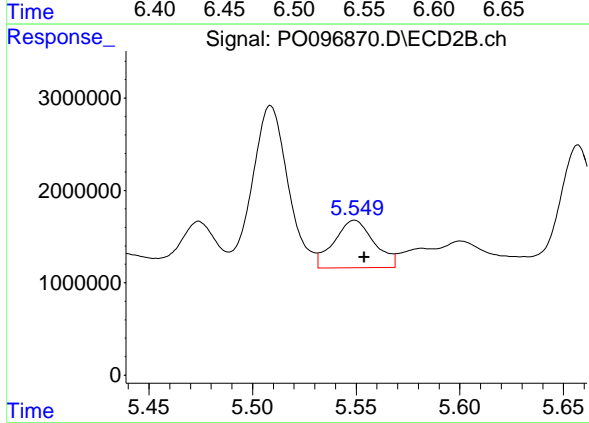
R.T.: 5.156 min  
 Delta R.T.: -0.004 min  
 Response: 22654379  
 Conc: 443.77 ng/ml



#25 AR-1248-5

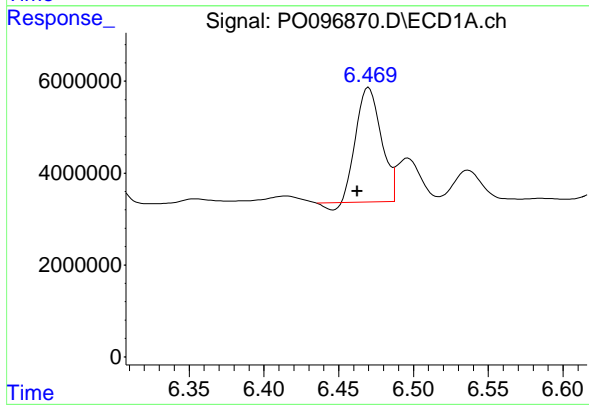
R.T.: 6.536 min  
 Delta R.T.: 0.009 min  
 Response: 8521593  
 Conc: 96.74 ng/ml

Instrument :  
 ECD\_O  
 ClientSampleId :



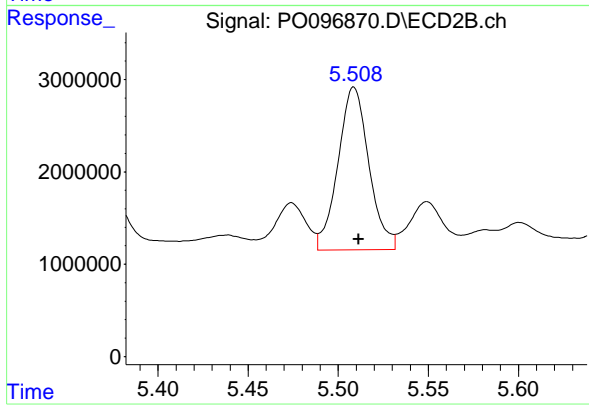
#25 AR-1248-5

R.T.: 5.549 min  
 Delta R.T.: -0.005 min  
 Response: 6947023  
 Conc: 148.59 ng/ml



#26 AR-1254-1

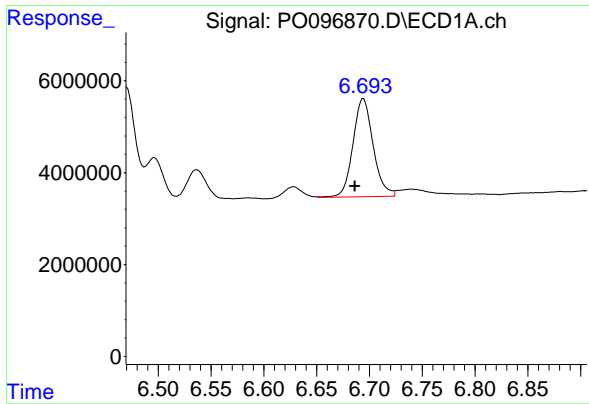
R.T.: 6.470 min  
 Delta R.T.: 0.008 min  
 Response: 28663485  
 Conc: 262.27 ng/ml



#26 AR-1254-1

R.T.: 5.509 min  
 Delta R.T.: -0.003 min  
 Response: 21021795  
 Conc: 284.86 ng/ml

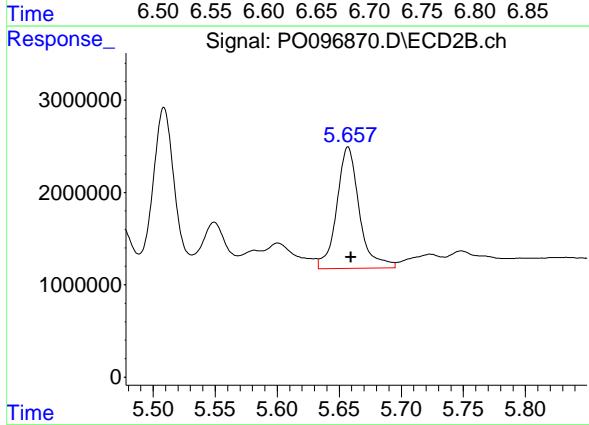




#27 AR-1254-2

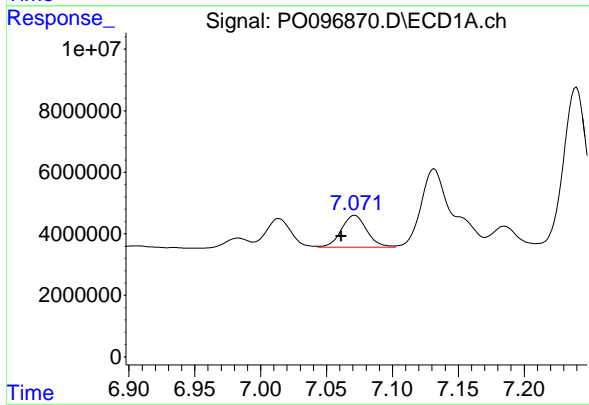
R.T.: 6.694 min  
 Delta R.T.: 0.008 min  
 Response: 28469062  
 Conc: 176.58 ng/ml

Instrument :  
 ECD\_O  
 ClientSampleId :



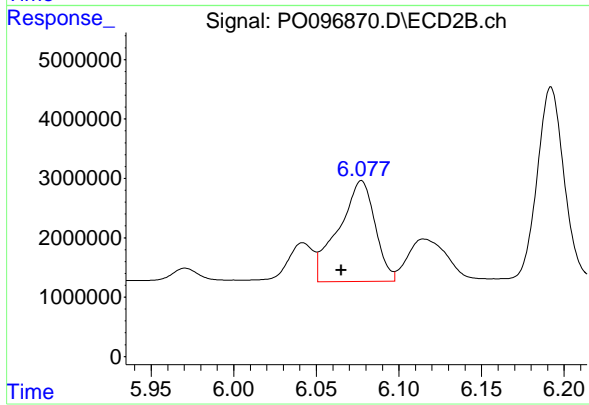
#27 AR-1254-2

R.T.: 5.657 min  
 Delta R.T.: -0.002 min  
 Response: 16606880  
 Conc: 252.08 ng/ml



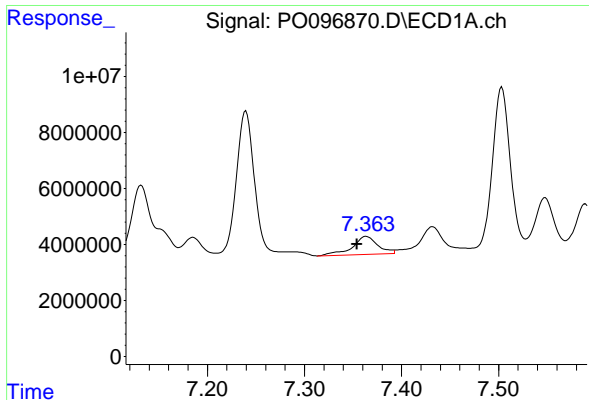
#28 AR-1254-3

R.T.: 7.071 min  
 Delta R.T.: 0.010 min  
 Response: 13923821  
 Conc: 88.86 ng/ml



#28 AR-1254-3

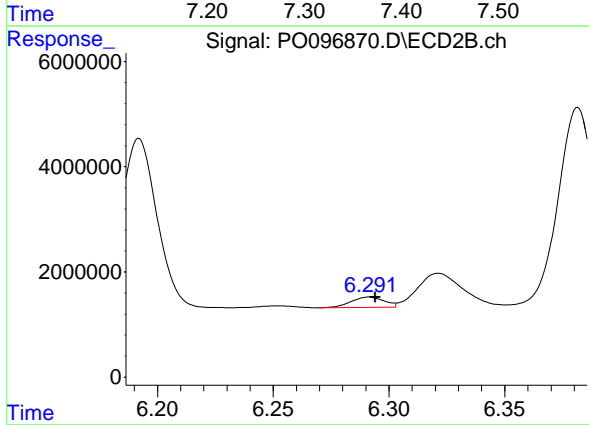
R.T.: 6.077 min  
 Delta R.T.: 0.012 min  
 Response: 26055418  
 Conc: 257.81 ng/ml



#29 AR-1254-4

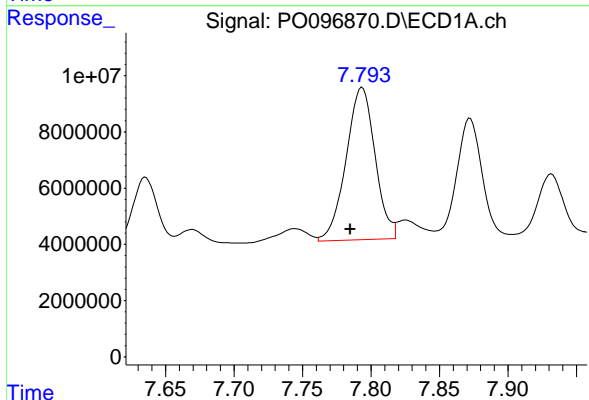
R.T.: 7.364 min  
 Delta R.T.: 0.009 min  
 Response: 11565843  
 Conc: 114.72 ng/ml

Instrument :  
 ECD\_O  
 ClientSampleId :



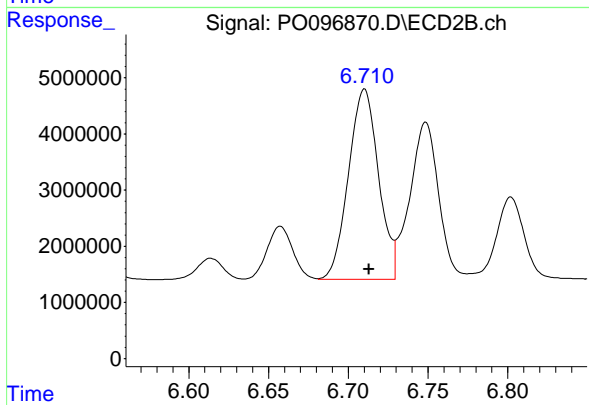
#29 AR-1254-4

R.T.: 6.291 min  
 Delta R.T.: -0.003 min  
 Response: 1962458  
 Conc: 33.91 ng/ml



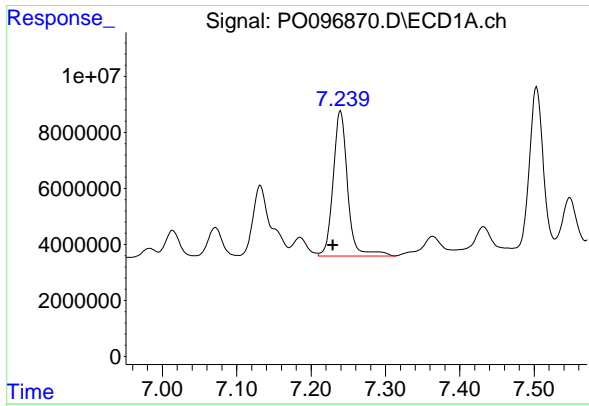
#30 AR-1254-5

R.T.: 7.794 min  
 Delta R.T.: 0.009 min  
 Response: 79784879  
 Conc: 711.00 ng/ml



#30 AR-1254-5

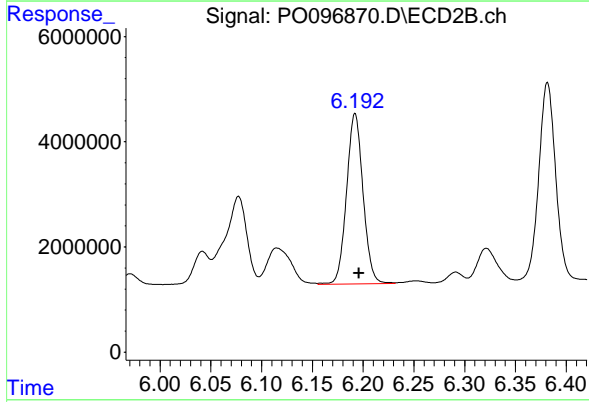
R.T.: 6.710 min  
 Delta R.T.: -0.003 min  
 Response: 44501629  
 Conc: 506.19 ng/ml



#31 AR-1260-1

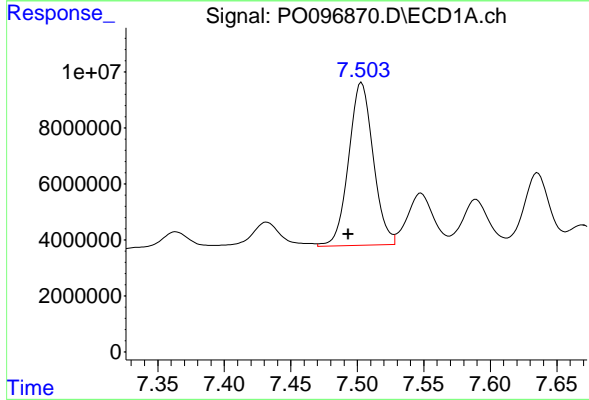
R.T.: 7.240 min  
 Delta R.T.: 0.010 min  
 Response: 70197747  
 Conc: 558.51 ng/ml

Instrument :  
 ECD\_O  
 ClientSampleId :



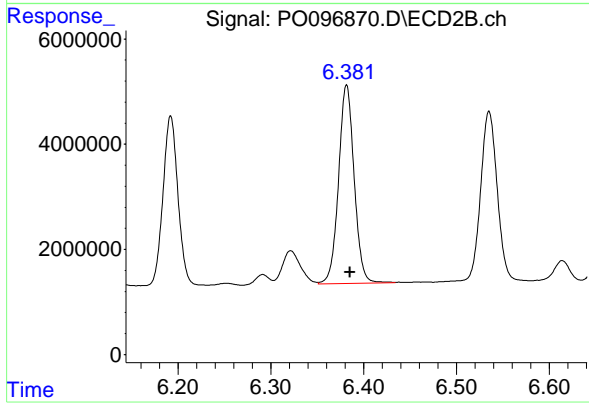
#31 AR-1260-1

R.T.: 6.192 min  
 Delta R.T.: -0.004 min  
 Response: 36669730  
 Conc: 521.11 ng/ml



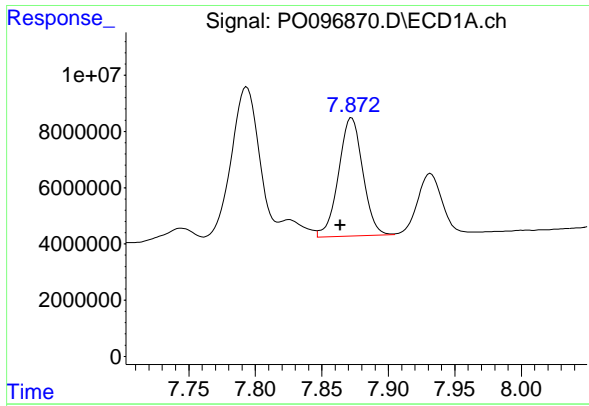
#32 AR-1260-2

R.T.: 7.503 min  
 Delta R.T.: 0.010 min  
 Response: 74727729  
 Conc: 554.63 ng/ml



#32 AR-1260-2

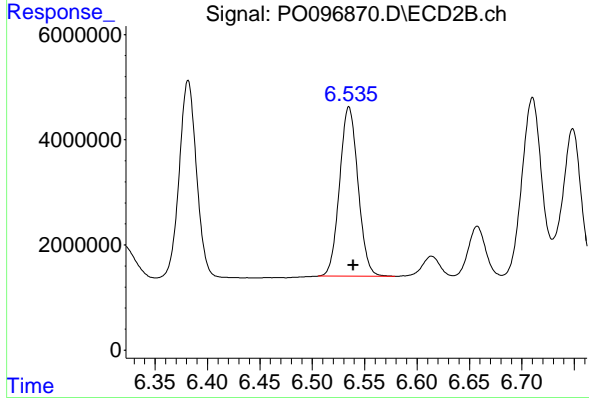
R.T.: 6.382 min  
 Delta R.T.: -0.004 min  
 Response: 44013662  
 Conc: 527.34 ng/ml



#33 AR-1260-3

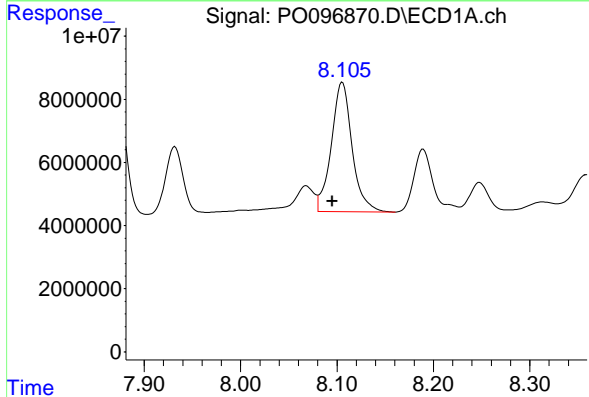
R.T.: 7.872 min  
 Delta R.T.: 0.009 min  
 Response: 53336421  
 Conc: 513.97 ng/ml

Instrument :  
 ECD\_O  
 ClientSampleId :



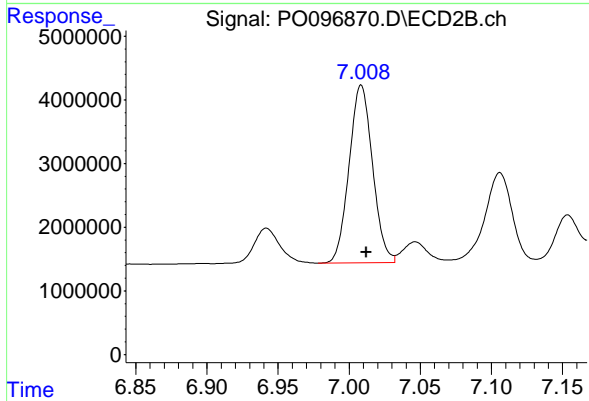
#33 AR-1260-3

R.T.: 6.535 min  
 Delta R.T.: -0.004 min  
 Response: 39419694  
 Conc: 510.49 ng/ml



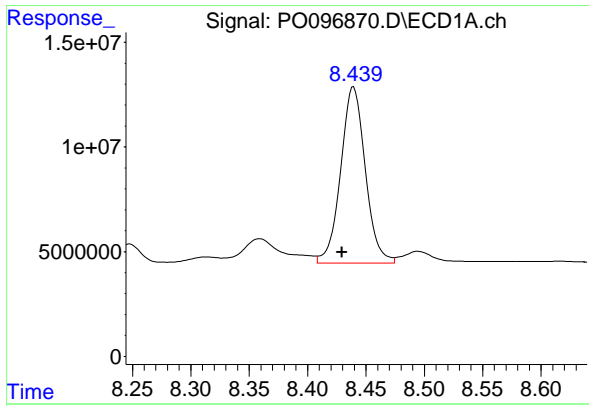
#34 AR-1260-4

R.T.: 8.105 min  
 Delta R.T.: 0.010 min  
 Response: 61987762  
 Conc: 554.43 ng/ml



#34 AR-1260-4

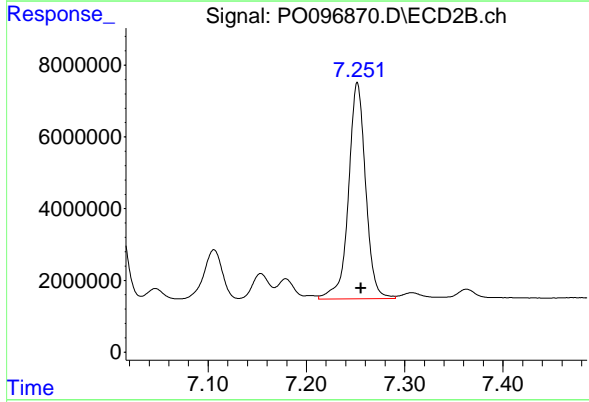
R.T.: 7.008 min  
 Delta R.T.: -0.004 min  
 Response: 31998106  
 Conc: 499.33 ng/ml



#35 AR-1260-5

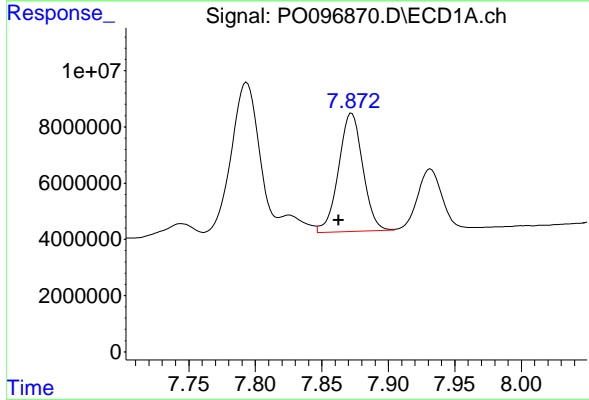
R.T.: 8.439 min  
Delta R.T.: 0.010 min  
Response: 123844313  
Conc: 589.79 ng/ml

Instrument :  
ECD\_O  
ClientSampleId :



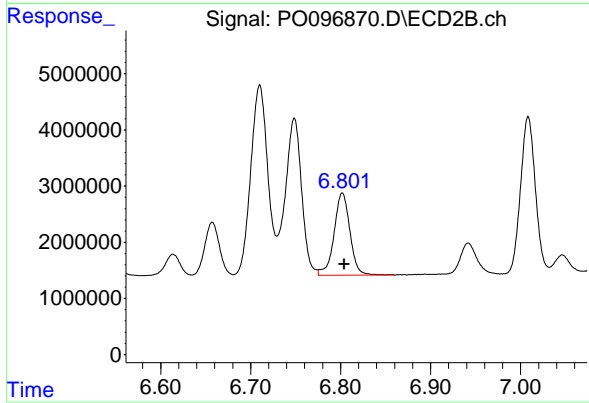
#35 AR-1260-5

R.T.: 7.252 min  
Delta R.T.: -0.004 min  
Response: 72942831  
Conc: 526.15 ng/ml



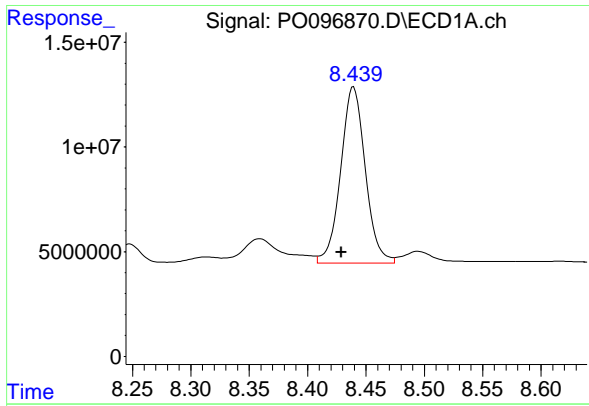
#36 AR-1262-1

R.T.: 7.872 min  
Delta R.T.: 0.010 min  
Response: 53336421  
Conc: 359.10 ng/ml



#36 AR-1262-1

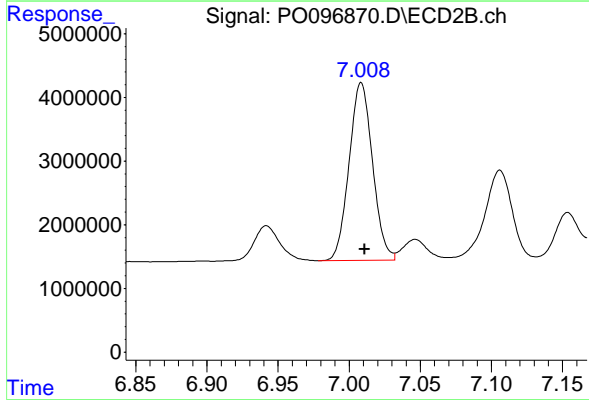
R.T.: 6.802 min  
Delta R.T.: -0.002 min  
Response: 17888706  
Conc: 454.39 ng/ml



#37 AR-1262-2

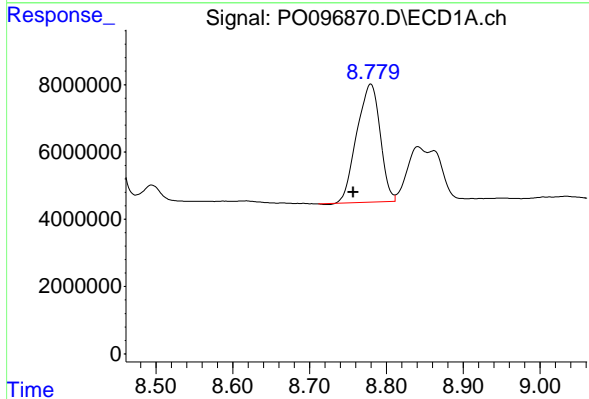
R.T.: 8.439 min  
Delta R.T.: 0.011 min  
Response: 123844313  
Conc: 535.04 ng/ml

Instrument :  
ECD\_O  
ClientSampleId :



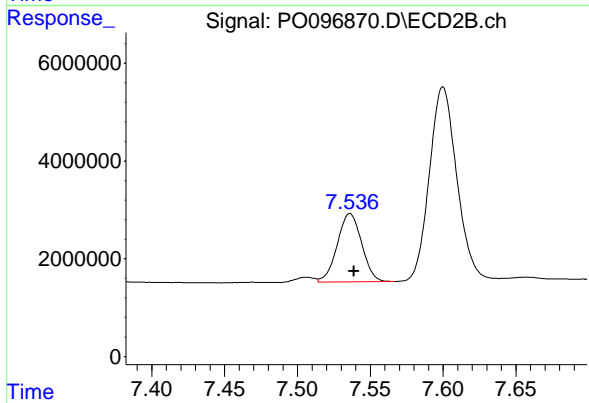
#37 AR-1262-2

R.T.: 7.008 min  
Delta R.T.: -0.003 min  
Response: 31998106  
Conc: 394.53 ng/ml



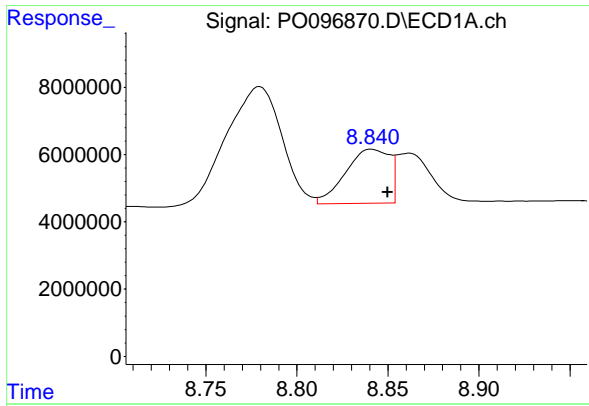
#38 AR-1262-3

R.T.: 8.780 min  
Delta R.T.: 0.023 min  
Response: 74385027  
Conc: 445.96 ng/ml



#38 AR-1262-3

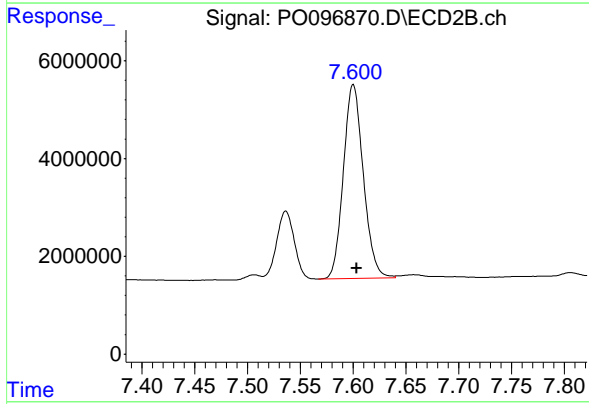
R.T.: 7.536 min  
Delta R.T.: -0.003 min  
Response: 16244966  
Conc: 253.14 ng/ml



#39 AR-1262-4

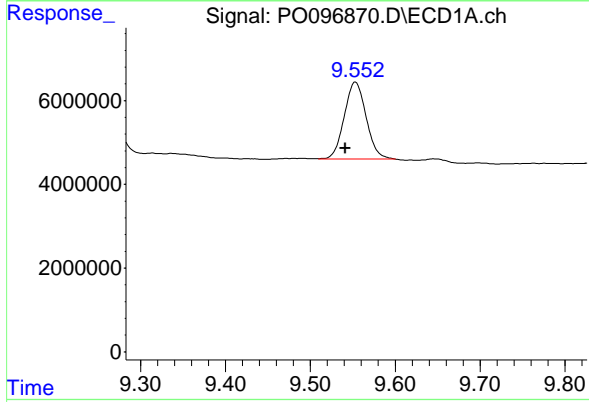
R.T.: 8.841 min  
 Delta R.T.: -0.009 min  
 Response: 27118973  
 Conc: 371.97 ng/ml

Instrument :  
 ECD\_O  
 ClientSampleId :



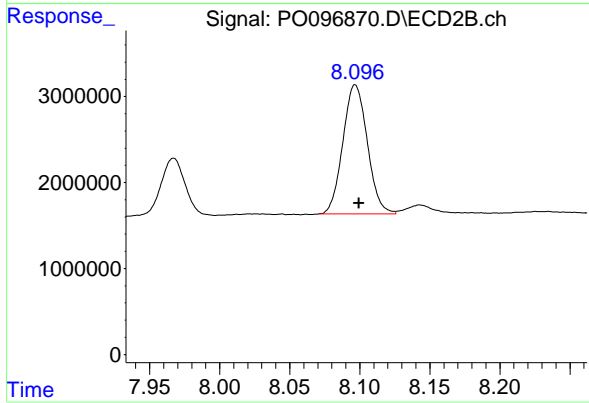
#39 AR-1262-4

R.T.: 7.600 min  
 Delta R.T.: -0.003 min  
 Response: 52119034  
 Conc: 458.79 ng/ml



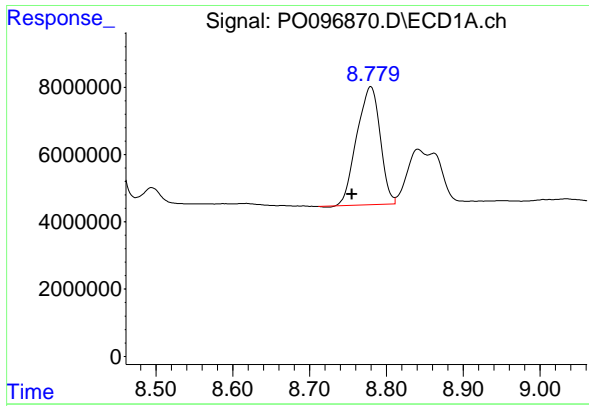
#40 AR-1262-5

R.T.: 9.553 min  
 Delta R.T.: 0.012 min  
 Response: 32971049  
 Conc: 395.92 ng/ml



#40 AR-1262-5

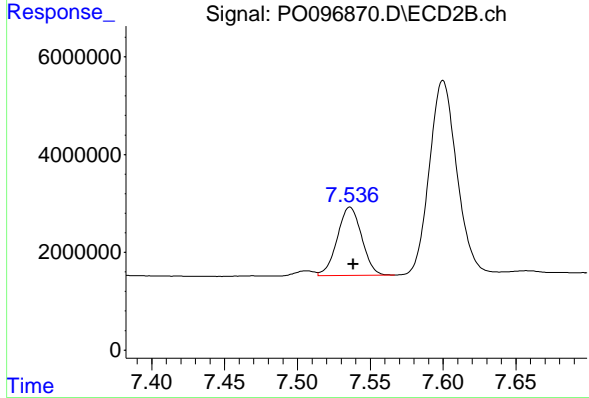
R.T.: 8.097 min  
 Delta R.T.: -0.003 min  
 Response: 18279283  
 Conc: 348.06 ng/ml



#41 AR-1268-1

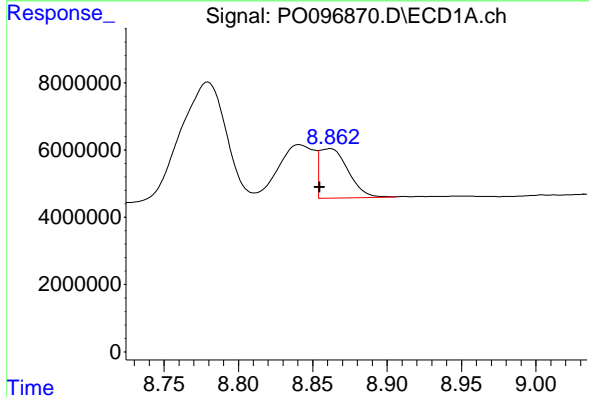
R.T.: 8.780 min  
 Delta R.T.: 0.024 min  
 Response: 74385027  
 Conc: 241.98 ng/ml

Instrument :  
 ECD\_O  
 ClientSampleId :



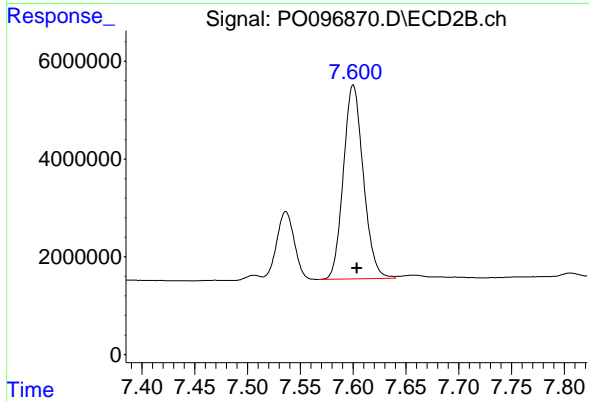
#41 AR-1268-1

R.T.: 7.536 min  
 Delta R.T.: -0.002 min  
 Response: 16244966  
 Conc: 87.67 ng/ml



#42 AR-1268-2

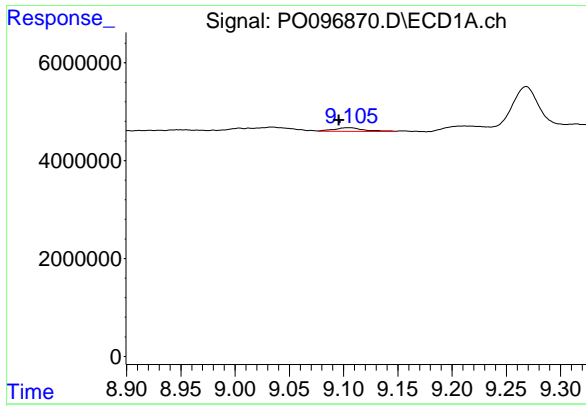
R.T.: 8.862 min  
 Delta R.T.: 0.007 min  
 Response: 19627488  
 Conc: 71.58 ng/ml



#42 AR-1268-2

R.T.: 7.600 min  
 Delta R.T.: -0.004 min  
 Response: 52119034  
 Conc: 310.81 ng/ml

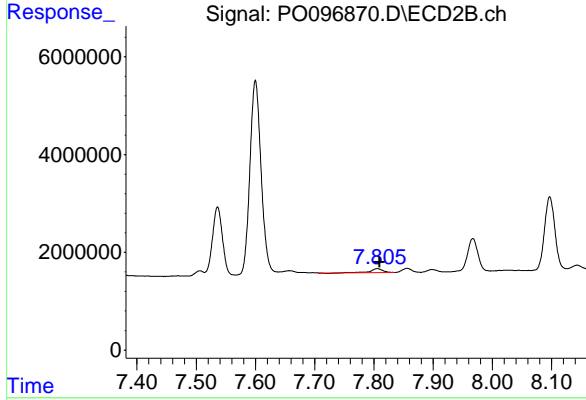




#43 AR-1268-3

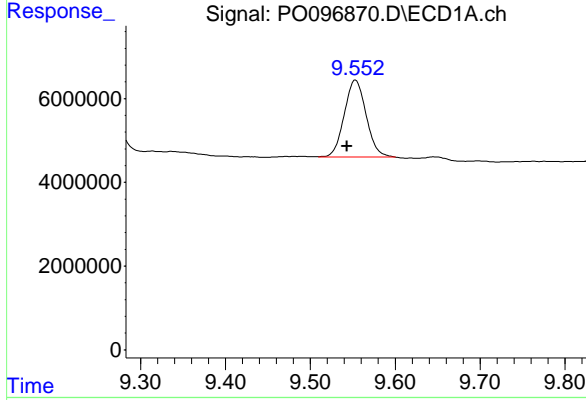
R.T.: 9.105 min  
 Delta R.T.: 0.010 min  
 Response: 1441770  
 Conc: 5.65 ng/ml

Instrument :  
 ECD\_O  
 ClientSampleId :



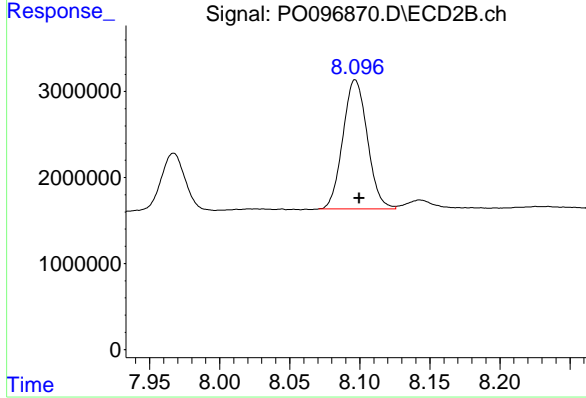
#43 AR-1268-3

R.T.: 7.806 min  
 Delta R.T.: -0.003 min  
 Response: 1127673  
 Conc: 7.80 ng/ml



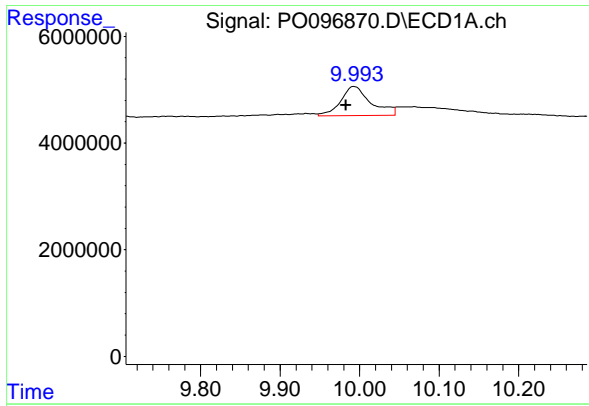
#44 AR-1268-4

R.T.: 9.553 min  
 Delta R.T.: 0.010 min  
 Response: 32971049  
 Conc: 355.62 ng/ml



#44 AR-1268-4

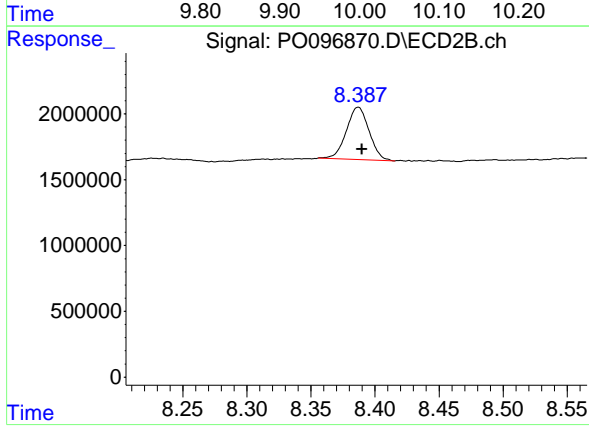
R.T.: 8.097 min  
 Delta R.T.: -0.003 min  
 Response: 18279283  
 Conc: 306.84 ng/ml



#45 AR-1268-5

R.T.: 9.993 min  
Delta R.T.: 0.010 min  
Response: 14475266  
Conc: 17.92 ng/ml

Instrument :  
ECD\_O  
ClientSampleId :



#45 AR-1268-5

R.T.: 8.387 min  
Delta R.T.: -0.003 min  
Response: 4908808  
Conc: 11.80 ng/ml