

Data Path : Z:\pestpcbsrv\HPCHEM1\ECD_O\Data\P0080923\
 Data File : P0096871.D
 Signal(s) : Signal #1: ECD1A.ch Signal #2: ECD2B.ch
 Acq On : 09 Aug 2023 23:58
 Operator : YP/AJ
 Sample : AR1242CCC500
 Misc :
 ALS Vial : 4 Sample Multiplier: 1

Instrument :
 ECD_O
 ClientSampleId :

Integration File signal 1: autoint1.e
 Integration File signal 2: autoint2.e
 Quant Time: Aug 10 01:38:59 2023
 Quant Method : Z:\pestpcbsrv\HPCHEM1\ECD_O\methods\P0080723.M
 Quant Title : GC EXTRACTABLES
 QLast Update : Tue Aug 08 04:34:41 2023
 Response via : Initial Calibration
 Integrator: ChemStation

Volume Inj. : 2 µl
 Signal #1 Phase : ZB-MR2 Signal #2 Phase: ZB-MR2
 Signal #1 Info : 30Mx0.32mmx 0.50µ Signal #2 Info : 30M x 0.32mm x 0.25µm

| Compound | RT#1 | RT#2 | Resp#1 | Resp#2 | ng/ml | ng/ml |
|-----------------------------|--------|--------|----------|----------|---------|-----------|
| ----- | | | | | | |
| System Monitoring Compounds | | | | | | |
| 1) SA Tetrachlo... | 4.410 | 3.619 | 162.8E6 | 67244422 | 49.189 | 50.797 |
| 2) SA Decachlor... | 10.352 | 8.640 | 111.7E6 | 56315366 | 51.065 | 48.677 |
| Target Compounds | | | | | | |
| 3) L1 AR-1016-1 | 5.596 | 4.705 | 40920995 | 18949711 | 434.481 | 427.411 |
| 4) L1 AR-1016-2 | 5.619 | 4.723 | 57514545 | 26505001 | 429.937 | 433.295 |
| 5) L1 AR-1016-3 | 5.682 | 4.900 | 36120250 | 14390864 | 415.075 | 440.513 |
| 6) L1 AR-1016-4 | 5.783 | 4.943 | 29064368 | 11977762 | 432.696 | 419.002 |
| 7) L1 AR-1016-5 | 6.084 | 5.156 | 30285043 | 16059751 | 433.778 | 417.717 |
| 8) L2 AR-1221-1 | 4.618 | 3.831 | 5694383 | 2222567 | 139.722 | 128.050 |
| 9) L2 AR-1221-2 | 4.710 | 3.918 | 8123528 | 3316386 | 267.399 | 256.672 |
| 10) L2 AR-1221-3 | 4.786 | 3.994 | 26113583 | 11533006 | 298.333 | 290.548 |
| 11) L3 AR-1232-1 | 4.786 | 3.994 | 26113583 | 11533006 | 358.047 | 356.539 |
| 12) L3 AR-1232-2 | 5.324 | 4.723 | 34876716 | 26505001 | 879.705 | 918.637 |
| 13) L3 AR-1232-3 | 5.619 | 4.900 | 57514545 | 14390864 | 940.200 | 949.149 |
| 14) L3 AR-1232-4 | 5.783 | 4.984 | 29064368 | 15255587 | 952.498 | 1020.805 |
| 15) L3 AR-1232-5 | 5.875 | 5.156 | 26635408 | 16059751 | 951.836 | 982.441 |
| 16) L4 AR-1242-1 | 5.596 | 4.705 | 40920995 | 18949711 | 488.219 | 480.653 |
| 17) L4 AR-1242-2 | 5.619 | 4.723 | 57514545 | 26505001 | 488.397 | 486.412 |
| 18) L4 AR-1242-3 | 5.682 | 4.900 | 36120250 | 14390864 | 488.954 | 486.694 |
| 19) L4 AR-1242-4 | 5.783 | 4.984 | 29064368 | 15255587 | 488.228 | 484.091 |
| 20) L4 AR-1242-5 | 6.536 | 5.508 | 26550816 | 17695186 | 482.569 | 485.649 |
| 21) L5 AR-1248-1 | 5.596 | 4.705 | 40920995 | 18949711 | 698.381 | 675.268 |
| 22) L5 AR-1248-2 | 5.875 | 4.943 | 26635408 | 11977762 | 283.302 | 282.621 |
| 23) L5 AR-1248-3 | 6.084 | 4.984 | 30285043 | 15255587 | 309.635 | 347.785 |
| 24) L5 AR-1248-4 | 6.497 | 5.156 | 25961668 | 16059751 | 285.785 | 314.589 |
| 25) L5 AR-1248-5 | 6.536 | 5.550 | 26550816 | 15055003 | 301.419 | 322.019 |
| 26) L6 AR-1254-1 | 6.468 | 5.508 | 19722868 | 17695186 | 180.462 | 239.785 # |
| 27) L6 AR-1254-2 | 6.698 | 5.657 | 23604366 | 5006379 | 146.404 | 75.992 # |
| 28) L6 AR-1254-3 | 7.070 | 6.061 | 10909351 | 6088260 | 69.621 | 60.243 |
| 29) L6 AR-1254-4 | 7.364 | 6.292 | 6545515 | 4254275 | 64.924 | 73.508 |
| 30) L6 AR-1254-5 | 7.797 | 6.711 | 1603305 | 1470076 | 14.288 | 16.722 |
| 31) L7 AR-1260-1 | 7.243 | 6.206 | 1018609 | 1868124 | 8.104 | 26.548 # |
| 32) L7 AR-1260-2 | 7.503 | 6.381 | 3361030 | 1026293 | 24.945 | 12.296 # |
| 33) L7 AR-1260-3 | 7.896 | 6.532 | 566909 | 909392 | 5.463 | 11.777 # |
| 34) L7 AR-1260-4 | 8.092 | 7.046 | 1212770 | 951159 | 10.847 | 14.843 # |
| 35) L7 AR-1260-5 | 8.432 | 7.252 | 984168 | 174194 | 4.687 | 1.257 # |
| 36) L8 AR-1262-1 | 7.896 | 6.822 | 566909 | 1622506 | 3.817 | 41.213 # |
| 37) L8 AR-1262-2 | 8.432 | 7.046 | 984168 | 951159 | 4.252 | 11.727 # |
| 38) L8 AR-1262-3 | 8.744 | 7.599f | 153384 | 1649524 | 0.920 | 25.704 # |
| 39) L8 AR-1262-4 | 8.824 | 7.599 | 2152653 | 1649524 | 29.526 | 14.520 # |
| 40) L8 AR-1262-5 | 9.537 | 0.000 | 336933 | 0 | 4.046 | N.D. # |
| 41) L9 AR-1268-1 | 8.744 | 7.599f | 153384 | 1649524 | 0.499 | 8.902 # |

Data Path : Z:\pestpcbsrv\HPCHEM1\ECD_0\Data\P0080923\
 Data File : P0096871.D
 Signal(s) : Signal #1: ECD1A.ch Signal #2: ECD2B.ch
 Acq On : 09 Aug 2023 23:58
 Operator : YP/AJ
 Sample : AR1242CCC500
 Misc :
 ALS Vial : 4 Sample Multiplier: 1

Instrument :
 ECD_0
 ClientSampleId :

Integration File signal 1: autoint1.e
 Integration File signal 2: autoint2.e
 Quant Time: Aug 10 01:38:59 2023
 Quant Method : Z:\pestpcbsrv\HPCHEM1\ECD_0\methods\P0080723.M
 Quant Title : GC EXTRACTABLES
 QLast Update : Tue Aug 08 04:34:41 2023
 Response via : Initial Calibration
 Integrator: ChemStation

Volume Inj. : 2 µl
 Signal #1 Phase : ZB-MR1 Signal #2 Phase: ZB-MR2
 Signal #1 Info : 30Mx0.32mmx 0.50µ Signal #2 Info : 30M x 0.32mm x 0.25µm

| | Compound | RT#1 | RT#2 | Resp#1 | Resp#2 | ng/ml | ng/ml |
|-----|--------------|-------|--------|---------|---------|-------|---------|
| 42) | L9 AR-1268-2 | 8.883 | 7.599 | 134300 | 1649524 | 0.490 | 9.837 # |
| 43) | L9 AR-1268-3 | 9.105 | 7.859f | 233769 | 242927 | 0.915 | 1.681 # |
| 44) | L9 AR-1268-4 | 9.537 | 0.000 | 336933 | 0 | 3.634 | N.D. # |
| 45) | L9 AR-1268-5 | 9.992 | 0.000 | 1394469 | 0 | 1.726 | N.D. # |

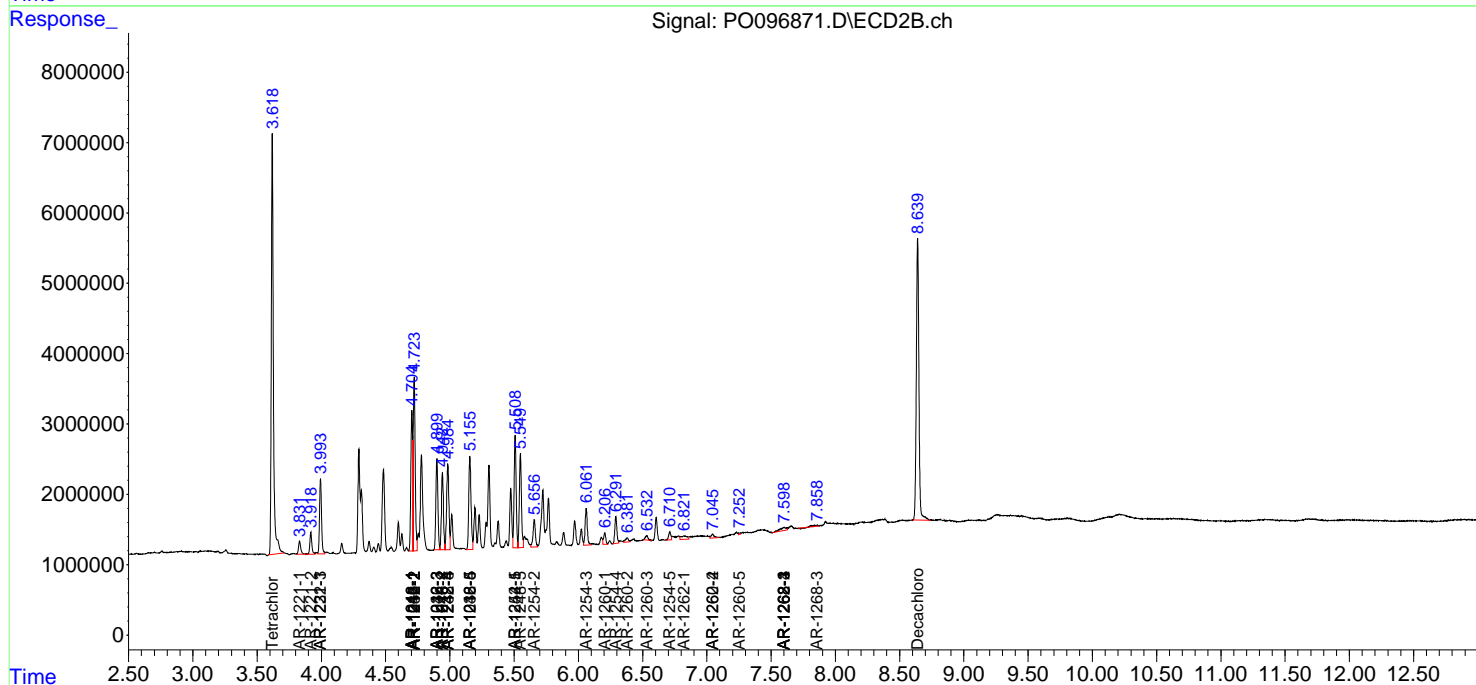
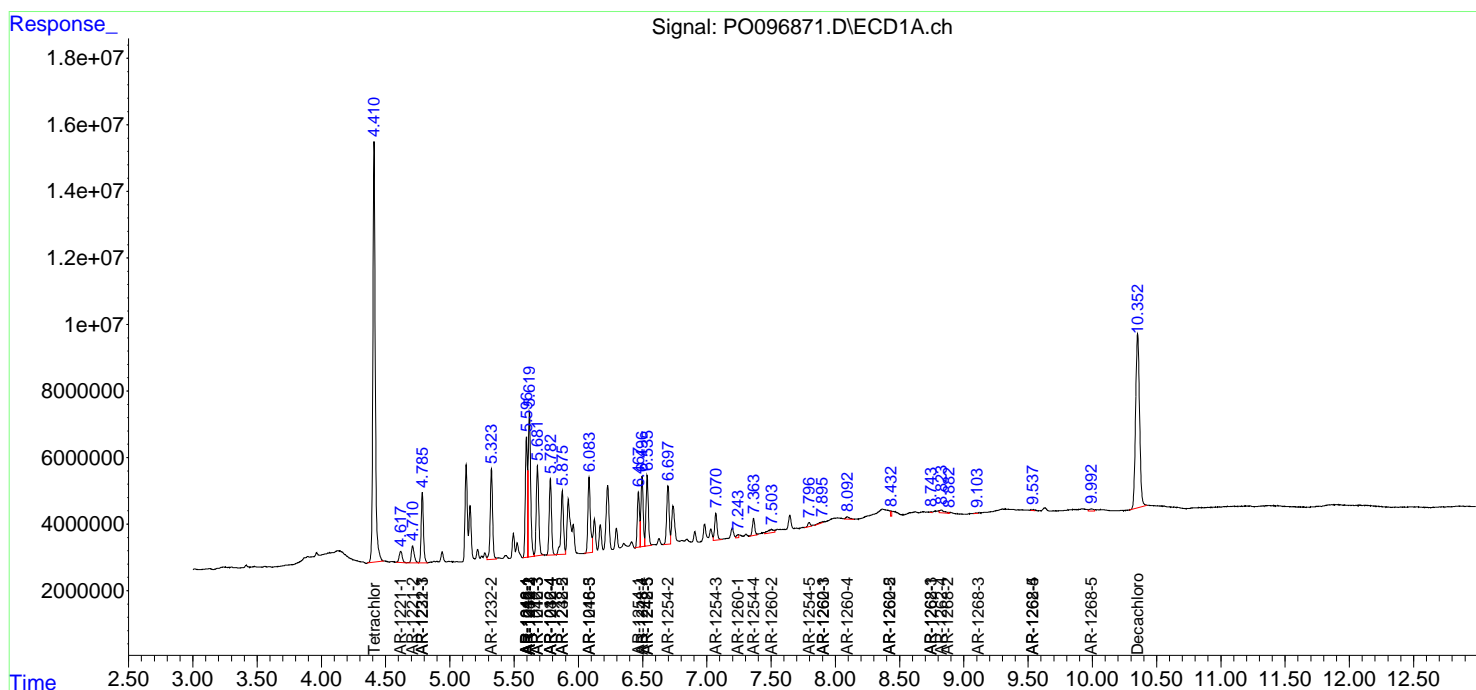
(f)=RT Delta > 1/2 Window (#)=Amounts differ by > 25% (m)=manual int.

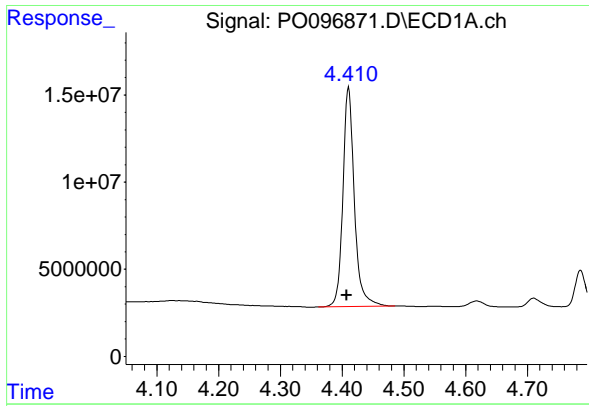
Data Path : Z:\pestpcbsrv\HPCHEM1\ECD_O\Data\PO080923\
 Data File : PO096871.D
 Signal(s) : Signal #1: ECD1A.ch Signal #2: ECD2B.ch
 Acq On : 09 Aug 2023 23:58
 Operator : YP/AJ
 Sample : AR1242CCC500
 Misc :
 ALS Vial : 4 Sample Multiplier: 1

Instrument :
 ECD_O
 ClientSampleId :

Integration File signal 1: autoint1.e
 Integration File signal 2: autoint2.e
 Quant Time: Aug 10 01:38:59 2023
 Quant Method : Z:\pestpcbsrv\HPCHEM1\ECD_O\methods\PO080723.M
 Quant Title : GC EXTRACTABLES
 QLast Update : Tue Aug 08 04:34:41 2023
 Response via : Initial Calibration
 Integrator: ChemStation

Volume Inj. : 2 µl
 Signal #1 Phase : ZB-MR1 Signal #2 Phase: ZB-MR2
 Signal #1 Info : 30Mx0.32mmx 0.50µ Signal #2 Info : 30M x 0.32mm x 0.25µm

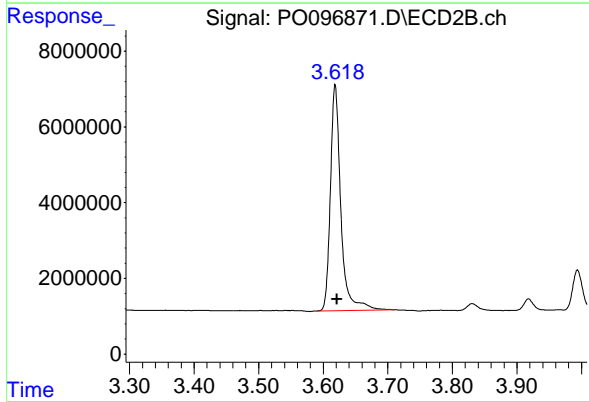




#1 Tetrachloro-m-xylene

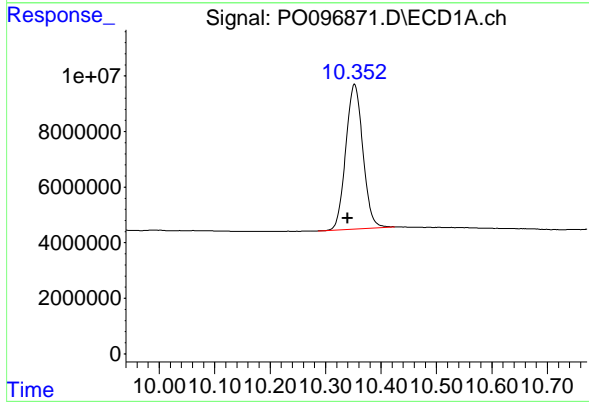
R.T.: 4.410 min
 Delta R.T.: 0.003 min
 Response: 162824570
 Conc: 49.19 ng/ml

Instrument :
 ECD_O
 ClientSampleId :



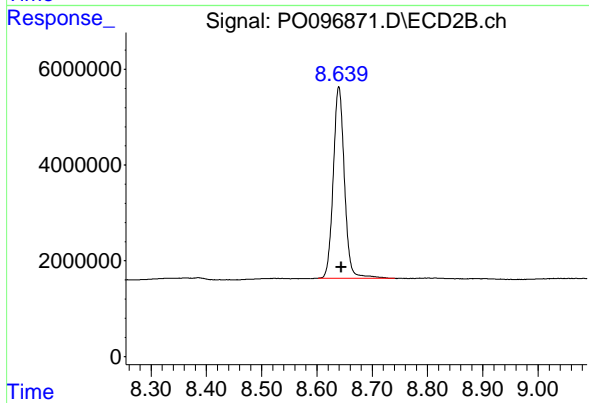
#1 Tetrachloro-m-xylene

R.T.: 3.619 min
 Delta R.T.: -0.003 min
 Response: 67244422
 Conc: 50.80 ng/ml



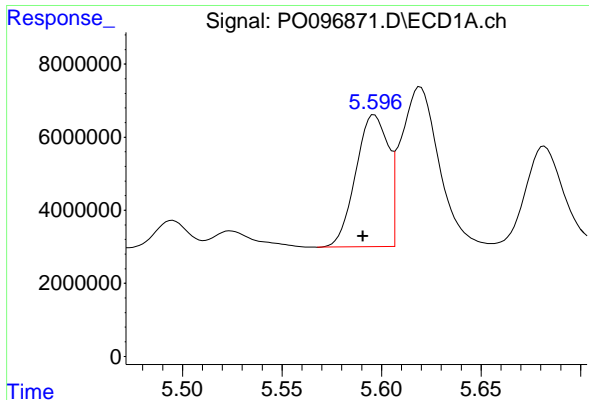
#2 Decachlorobiphenyl

R.T.: 10.352 min
 Delta R.T.: 0.013 min
 Response: 111738913
 Conc: 51.06 ng/ml



#2 Decachlorobiphenyl

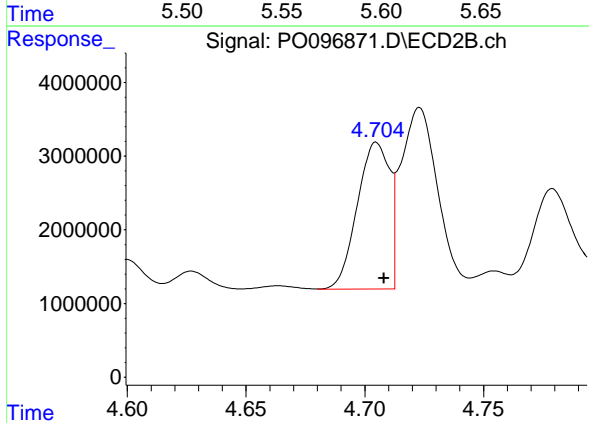
R.T.: 8.640 min
 Delta R.T.: -0.005 min
 Response: 56315366
 Conc: 48.68 ng/ml



#3 AR-1016-1

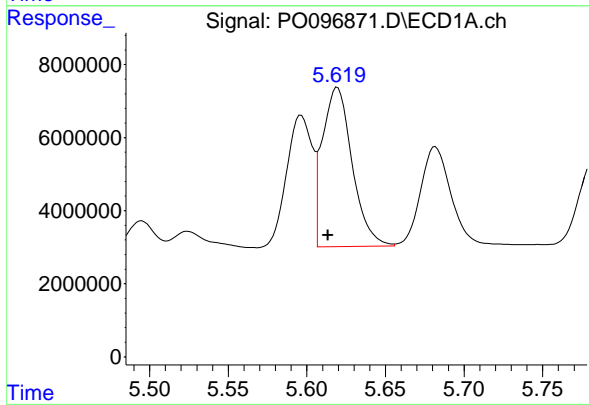
R.T.: 5.596 min
 Delta R.T.: 0.006 min
 Response: 40920995
 Conc: 434.48 ng/ml

Instrument :
 ECD_O
 ClientSampleId :



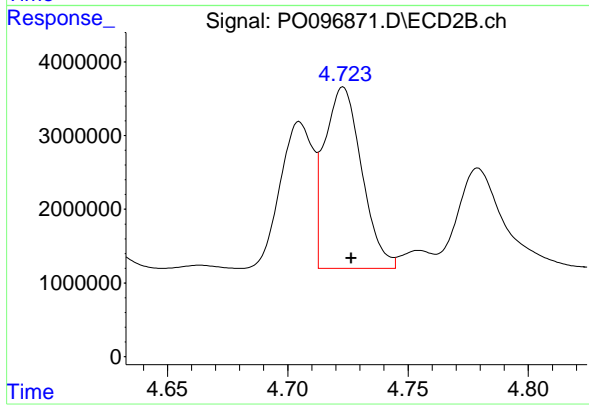
#3 AR-1016-1

R.T.: 4.705 min
 Delta R.T.: -0.003 min
 Response: 18949711
 Conc: 427.41 ng/ml



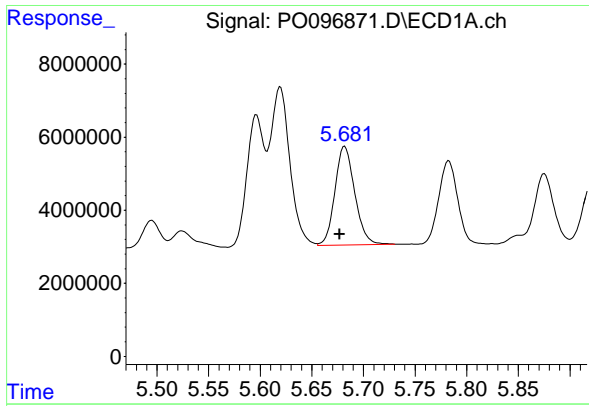
#4 AR-1016-2

R.T.: 5.619 min
 Delta R.T.: 0.006 min
 Response: 57514545
 Conc: 429.94 ng/ml



#4 AR-1016-2

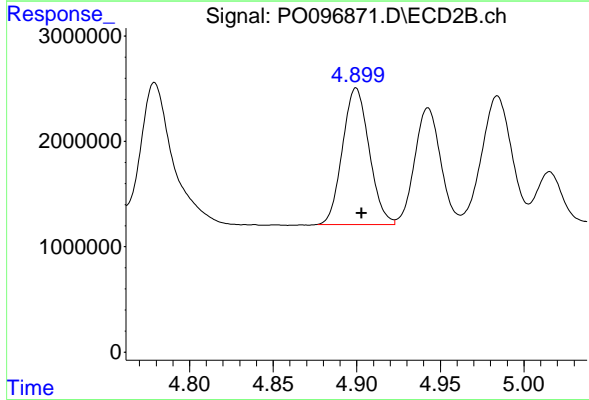
R.T.: 4.723 min
 Delta R.T.: -0.003 min
 Response: 26505001
 Conc: 433.30 ng/ml



#5 AR-1016-3

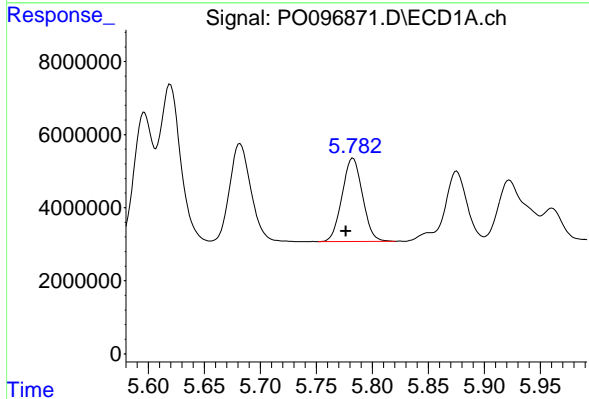
R.T.: 5.682 min
 Delta R.T.: 0.005 min
 Response: 36120250
 Conc: 415.07 ng/ml

Instrument :
 ECD_O
 ClientSampleId :



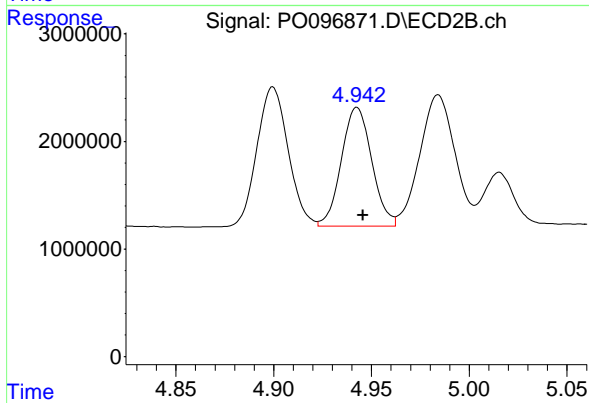
#5 AR-1016-3

R.T.: 4.900 min
 Delta R.T.: -0.003 min
 Response: 14390864
 Conc: 440.51 ng/ml



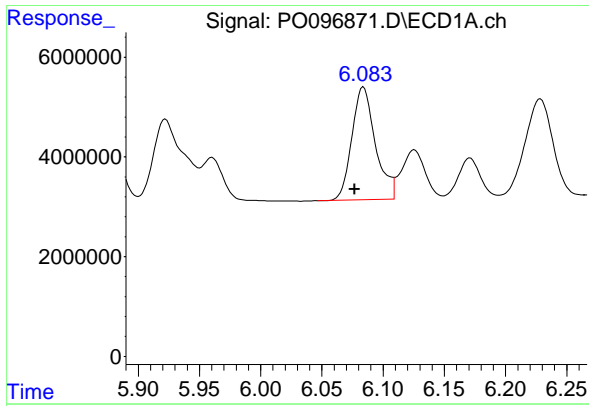
#6 AR-1016-4

R.T.: 5.783 min
 Delta R.T.: 0.006 min
 Response: 29064368
 Conc: 432.70 ng/ml



#6 AR-1016-4

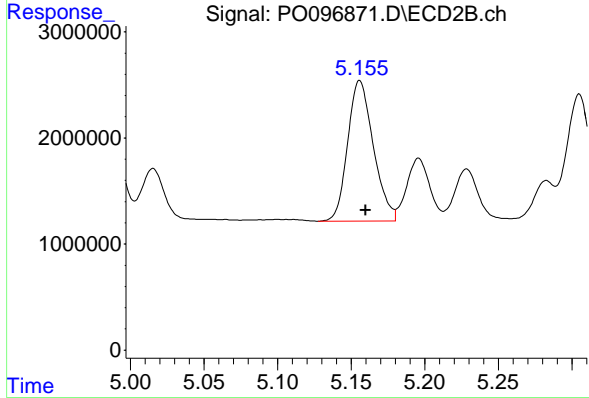
R.T.: 4.943 min
 Delta R.T.: -0.003 min
 Response: 11977762
 Conc: 419.00 ng/ml



#7 AR-1016-5

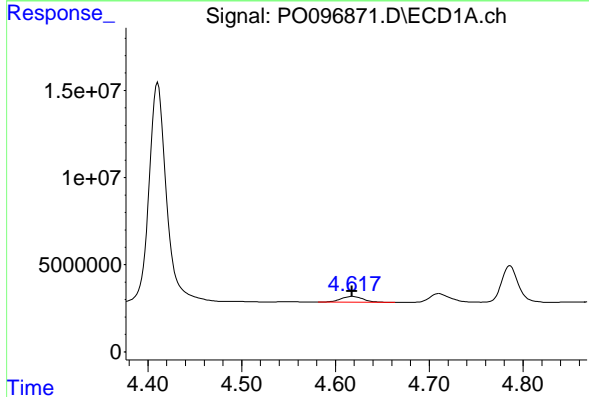
R.T.: 6.084 min
 Delta R.T.: 0.007 min
 Response: 30285043
 Conc: 433.78 ng/ml

Instrument :
 ECD_O
 ClientSampleId :



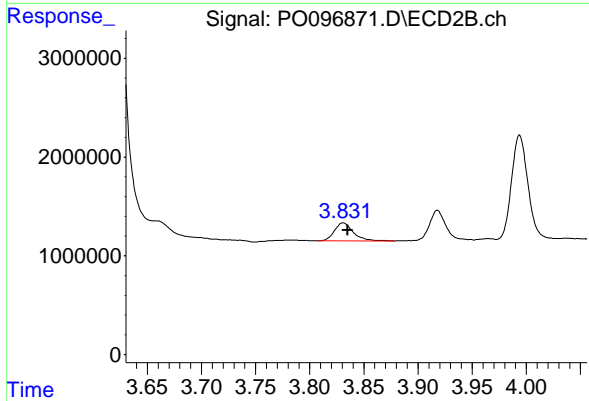
#7 AR-1016-5

R.T.: 5.156 min
 Delta R.T.: -0.004 min
 Response: 16059751
 Conc: 417.72 ng/ml



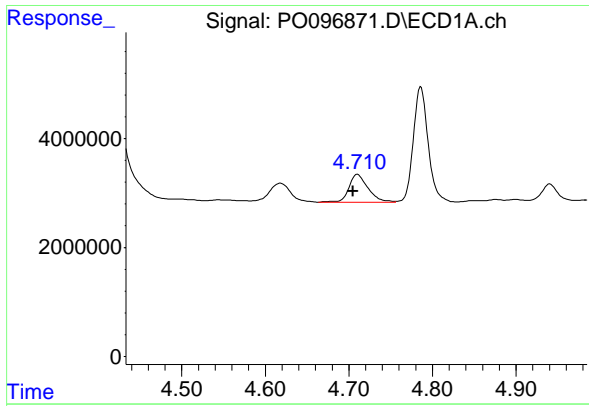
#8 AR-1221-1

R.T.: 4.618 min
 Delta R.T.: 0.000 min
 Response: 5694383
 Conc: 139.72 ng/ml



#8 AR-1221-1

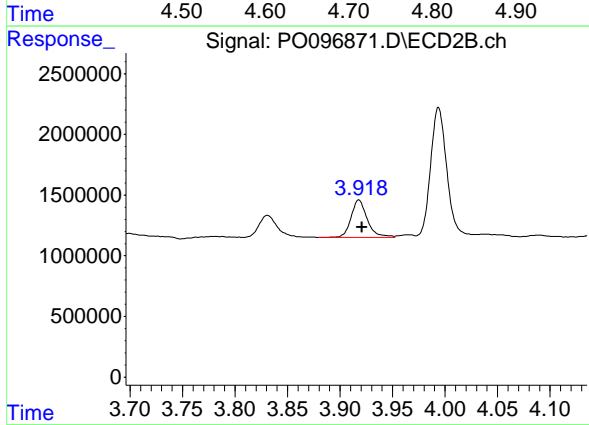
R.T.: 3.831 min
 Delta R.T.: -0.004 min
 Response: 2222567
 Conc: 128.05 ng/ml



#9 AR-1221-2

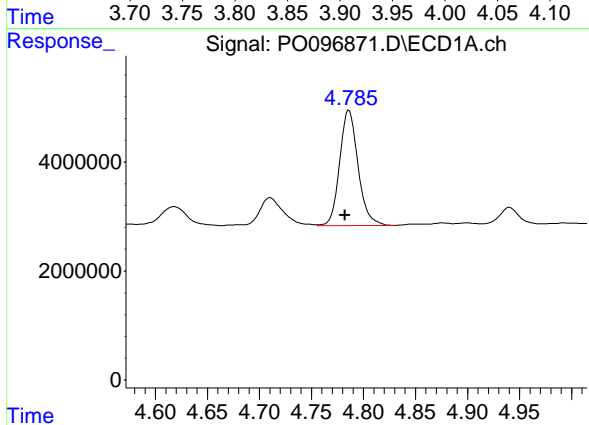
R.T.: 4.710 min
 Delta R.T.: 0.005 min
 Response: 8123528
 Conc: 267.40 ng/ml

Instrument :
 ECD_O
 ClientSampleId :



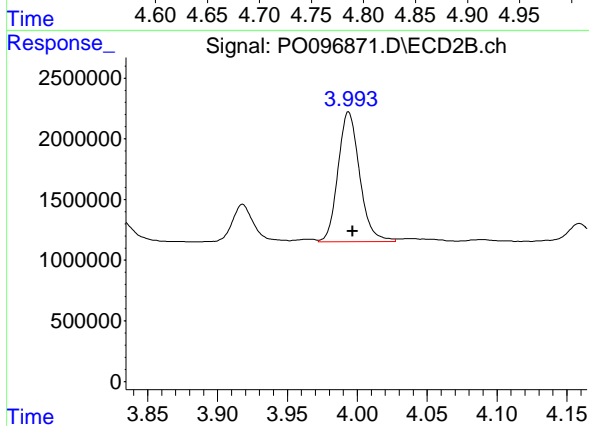
#9 AR-1221-2

R.T.: 3.918 min
 Delta R.T.: -0.003 min
 Response: 3316386
 Conc: 256.67 ng/ml



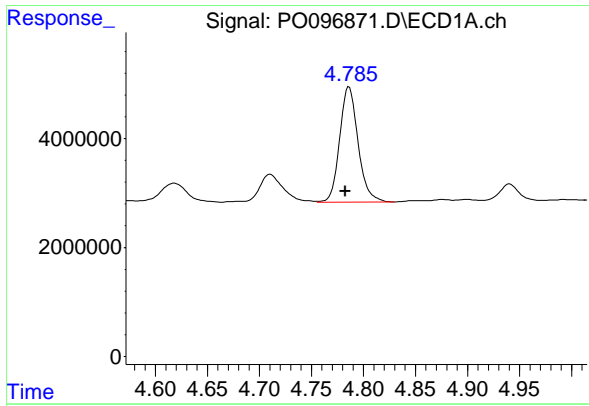
#10 AR-1221-3

R.T.: 4.786 min
 Delta R.T.: 0.004 min
 Response: 26113583
 Conc: 298.33 ng/ml



#10 AR-1221-3

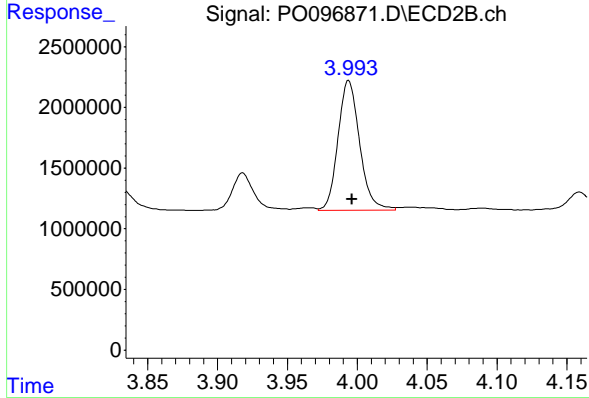
R.T.: 3.994 min
 Delta R.T.: -0.003 min
 Response: 11533006
 Conc: 290.55 ng/ml



#11 AR-1232-1

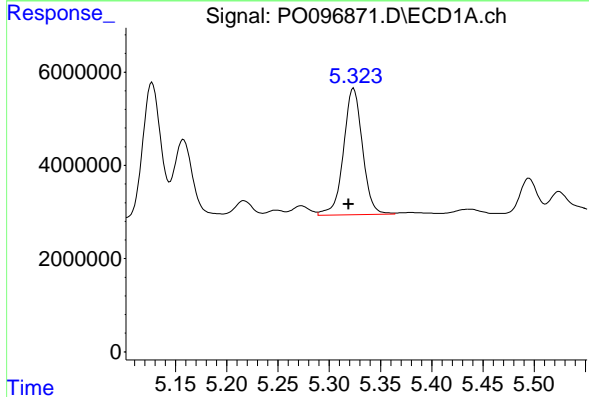
R.T.: 4.786 min
 Delta R.T.: 0.004 min
 Response: 26113583
 Conc: 358.05 ng/ml

Instrument :
 ECD_O
 ClientSampleId :



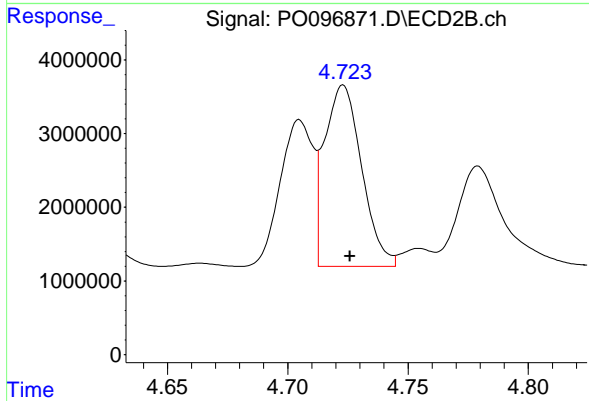
#11 AR-1232-1

R.T.: 3.994 min
 Delta R.T.: -0.002 min
 Response: 11533006
 Conc: 356.54 ng/ml



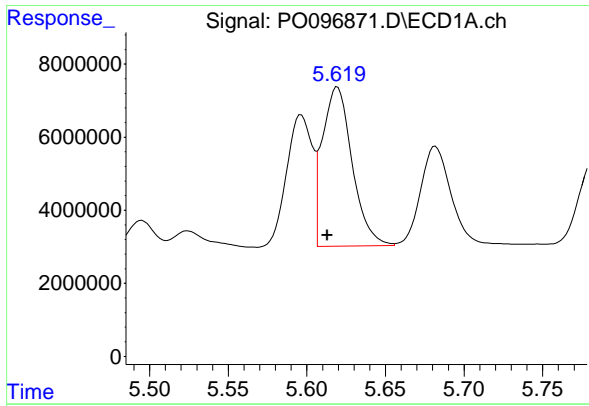
#12 AR-1232-2

R.T.: 5.324 min
 Delta R.T.: 0.005 min
 Response: 34876716
 Conc: 879.70 ng/ml



#12 AR-1232-2

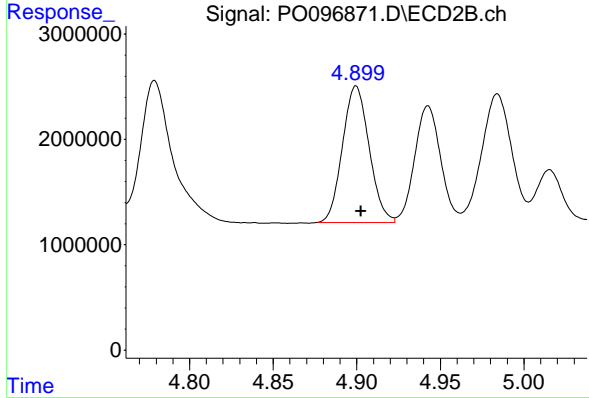
R.T.: 4.723 min
 Delta R.T.: -0.003 min
 Response: 26505001
 Conc: 918.64 ng/ml



#13 AR-1232-3

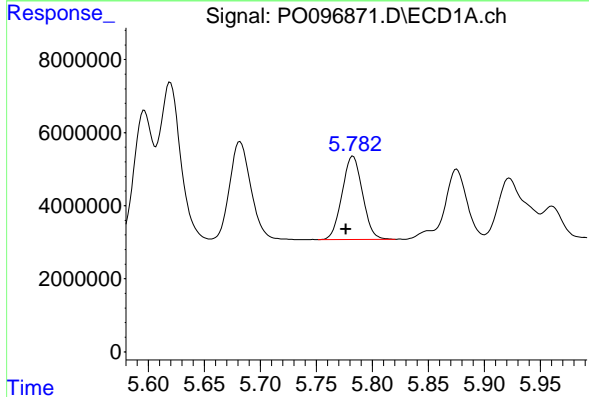
R.T.: 5.619 min
 Delta R.T.: 0.006 min
 Response: 57514545
 Conc: 940.20 ng/ml

Instrument :
 ECD_O
 ClientSampleId :



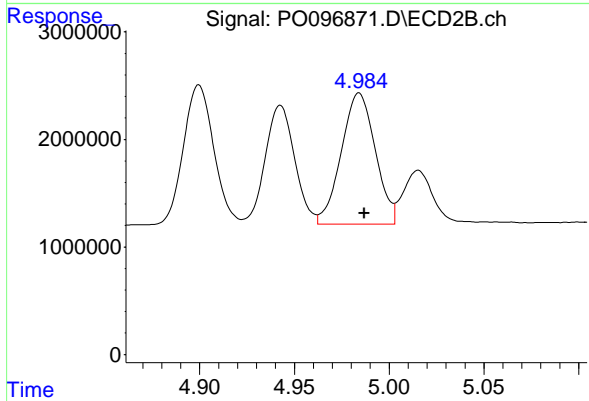
#13 AR-1232-3

R.T.: 4.900 min
 Delta R.T.: -0.003 min
 Response: 14390864
 Conc: 949.15 ng/ml



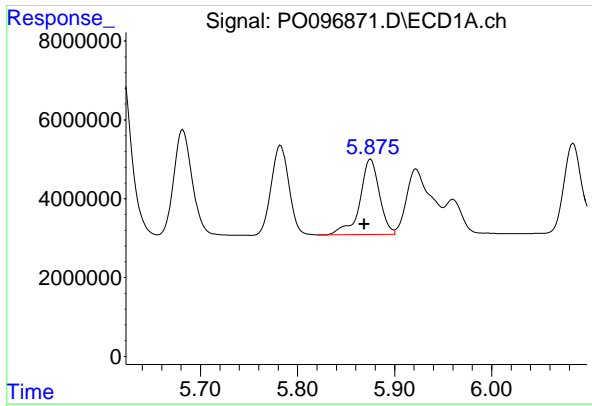
#14 AR-1232-4

R.T.: 5.783 min
 Delta R.T.: 0.006 min
 Response: 29064368
 Conc: 952.50 ng/ml



#14 AR-1232-4

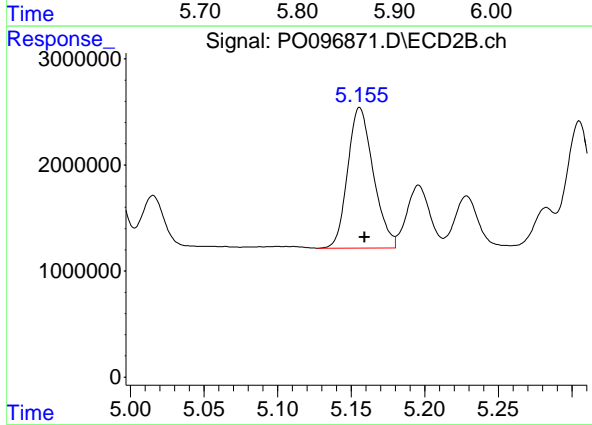
R.T.: 4.984 min
 Delta R.T.: -0.003 min
 Response: 15255587
 Conc: 1020.81 ng/ml



#15 AR-1232-5

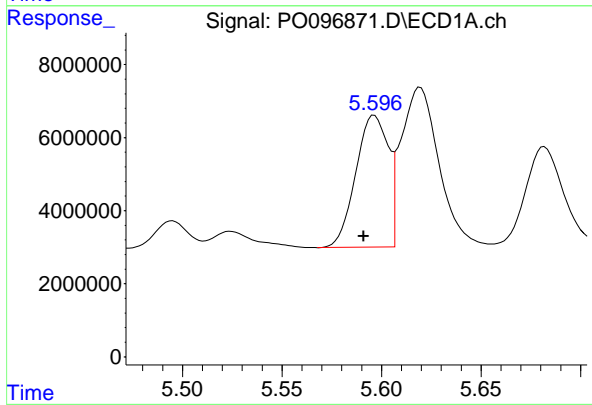
R.T.: 5.875 min
 Delta R.T.: 0.006 min
 Response: 26635408
 Conc: 951.84 ng/ml

Instrument :
 ECD_O
 ClientSampleId :



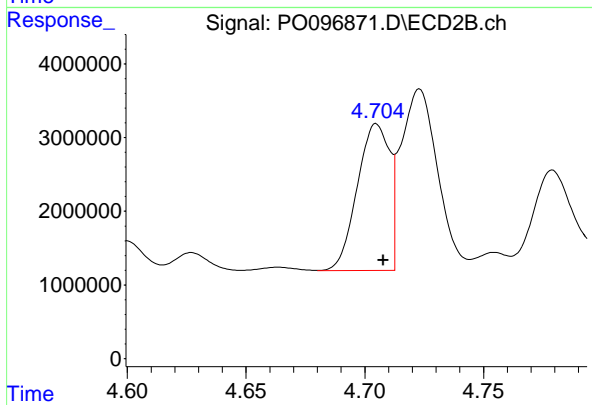
#15 AR-1232-5

R.T.: 5.156 min
 Delta R.T.: -0.003 min
 Response: 16059751
 Conc: 982.44 ng/ml



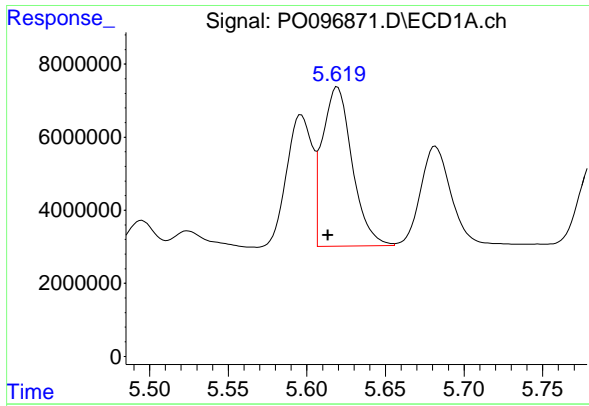
#16 AR-1242-1

R.T.: 5.596 min
 Delta R.T.: 0.005 min
 Response: 40920995
 Conc: 488.22 ng/ml



#16 AR-1242-1

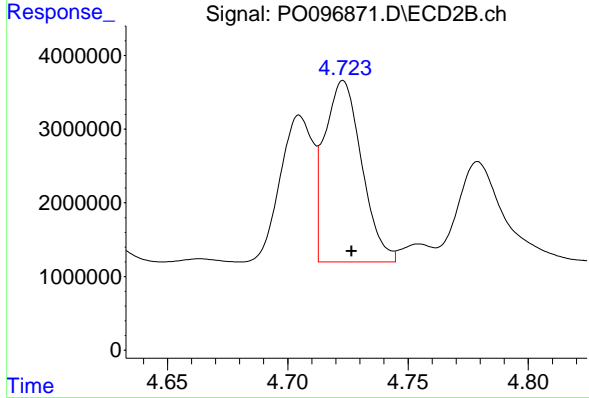
R.T.: 4.705 min
 Delta R.T.: -0.003 min
 Response: 18949711
 Conc: 480.65 ng/ml



#17 AR-1242-2

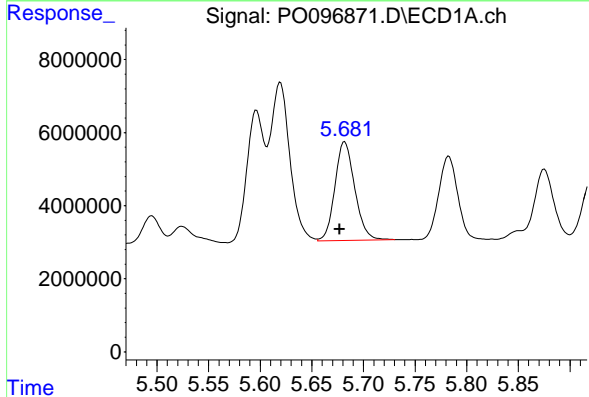
R.T.: 5.619 min
 Delta R.T.: 0.006 min
 Response: 57514545
 Conc: 488.40 ng/ml

Instrument :
 ECD_O
 ClientSampleId :



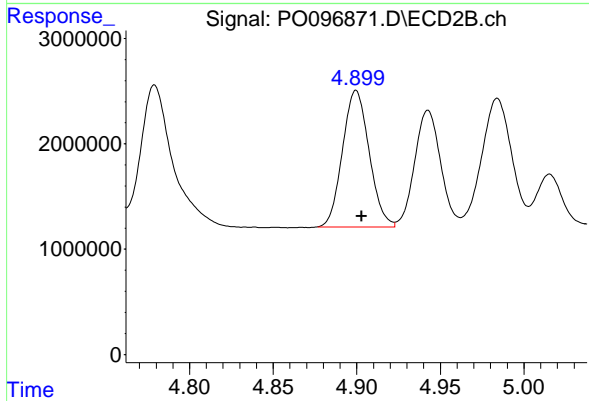
#17 AR-1242-2

R.T.: 4.723 min
 Delta R.T.: -0.003 min
 Response: 26505001
 Conc: 486.41 ng/ml



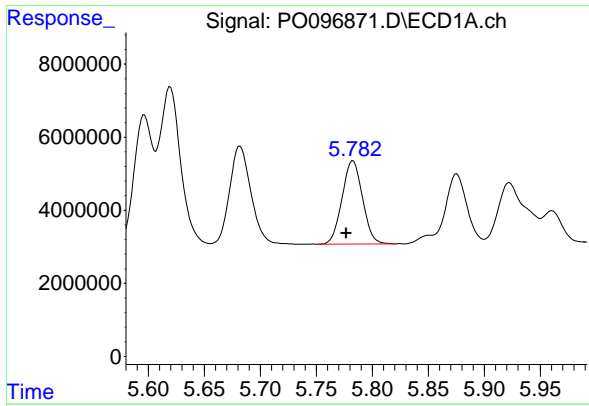
#18 AR-1242-3

R.T.: 5.682 min
 Delta R.T.: 0.005 min
 Response: 36120250
 Conc: 488.95 ng/ml



#18 AR-1242-3

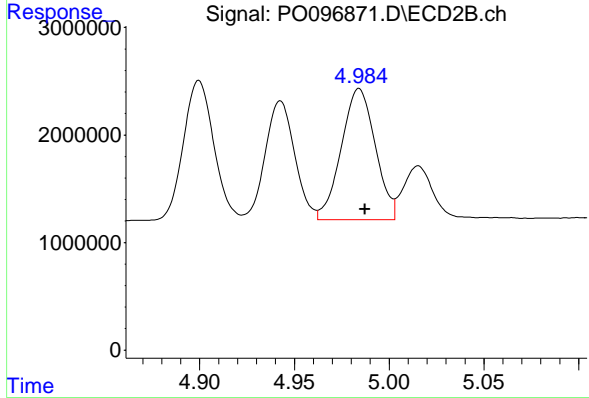
R.T.: 4.900 min
 Delta R.T.: -0.003 min
 Response: 14390864
 Conc: 486.69 ng/ml



#19 AR-1242-4

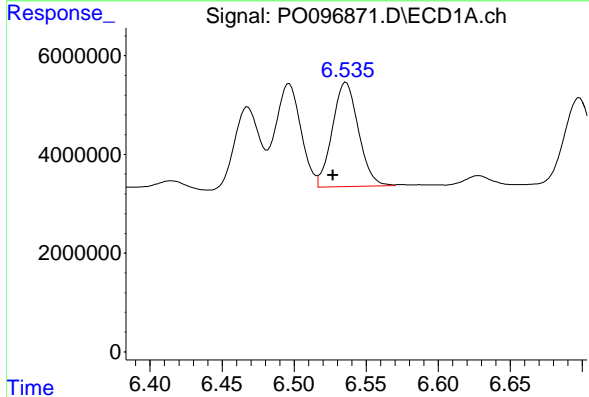
R.T.: 5.783 min
 Delta R.T.: 0.006 min
 Response: 29064368
 Conc: 488.23 ng/ml

Instrument :
 ECD_O
 ClientSampleId :



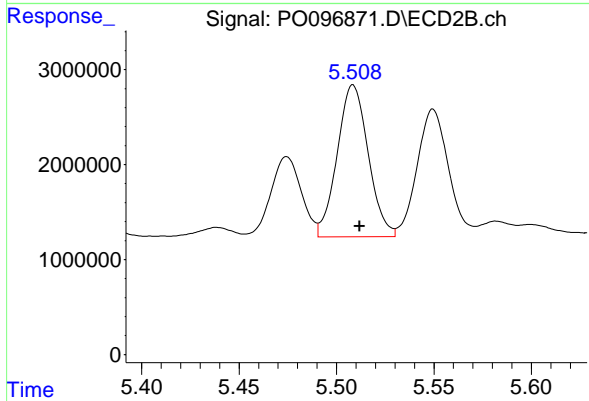
#19 AR-1242-4

R.T.: 4.984 min
 Delta R.T.: -0.003 min
 Response: 15255587
 Conc: 484.09 ng/ml



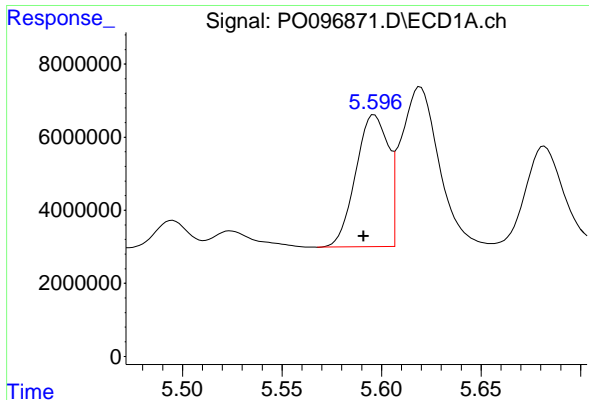
#20 AR-1242-5

R.T.: 6.536 min
 Delta R.T.: 0.009 min
 Response: 26550816
 Conc: 482.57 ng/ml



#20 AR-1242-5

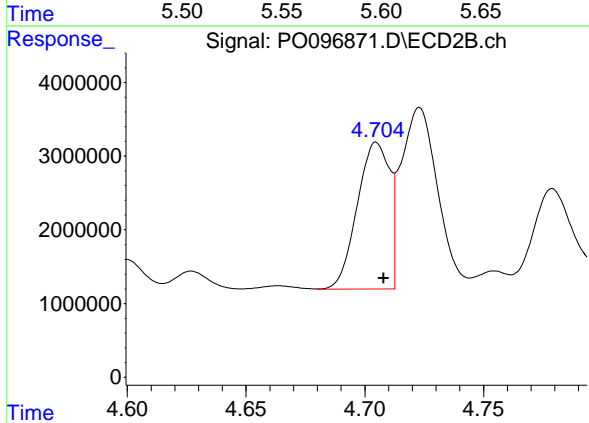
R.T.: 5.508 min
 Delta R.T.: -0.003 min
 Response: 17695186
 Conc: 485.65 ng/ml



#21 AR-1248-1

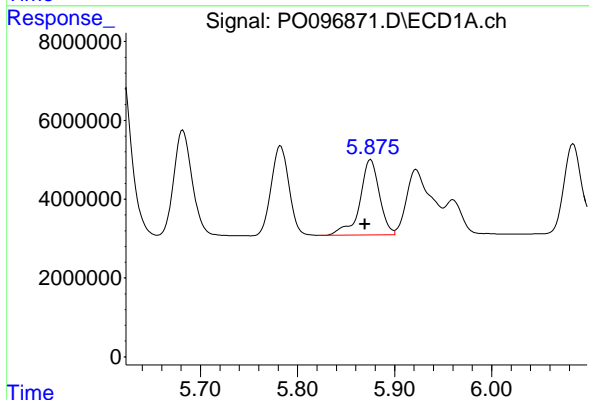
R.T.: 5.596 min
 Delta R.T.: 0.005 min
 Response: 40920995
 Conc: 698.38 ng/ml

Instrument :
 ECD_O
 ClientSampleId :



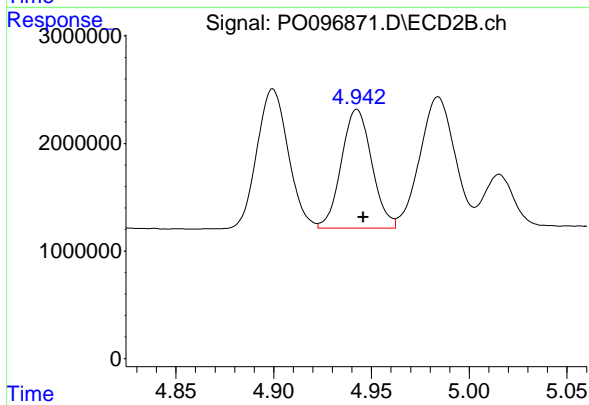
#21 AR-1248-1

R.T.: 4.705 min
 Delta R.T.: -0.003 min
 Response: 18949711
 Conc: 675.27 ng/ml



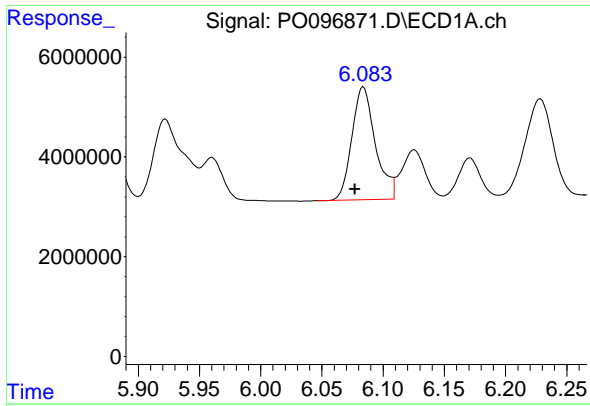
#22 AR-1248-2

R.T.: 5.875 min
 Delta R.T.: 0.006 min
 Response: 26635408
 Conc: 283.30 ng/ml



#22 AR-1248-2

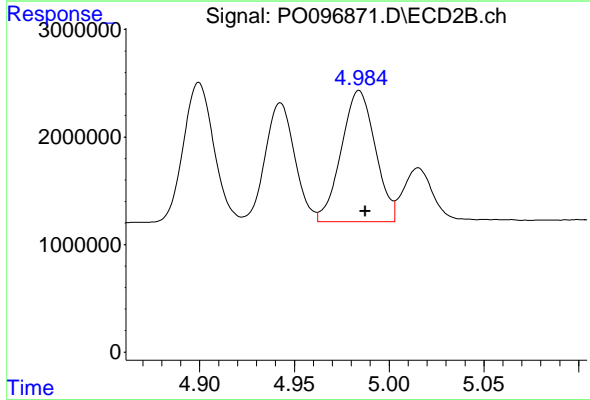
R.T.: 4.943 min
 Delta R.T.: -0.003 min
 Response: 11977762
 Conc: 282.62 ng/ml



#23 AR-1248-3

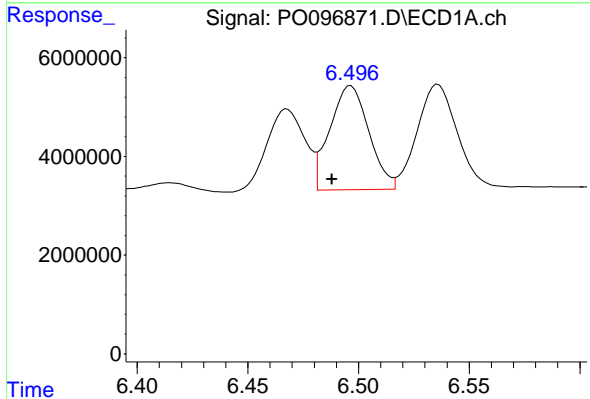
R.T.: 6.084 min
 Delta R.T.: 0.007 min
 Response: 30285043
 Conc: 309.63 ng/ml

Instrument :
 ECD_O
 ClientSampleId :



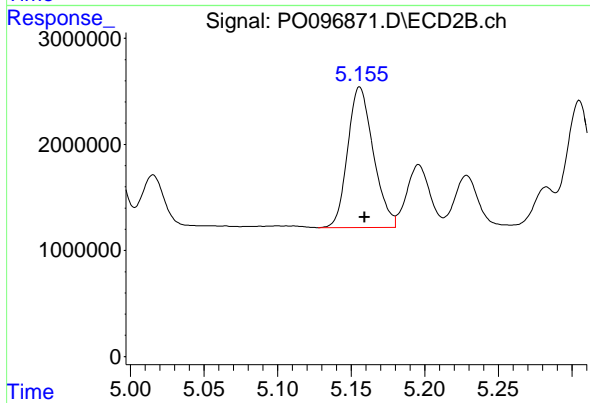
#23 AR-1248-3

R.T.: 4.984 min
 Delta R.T.: -0.003 min
 Response: 15255587
 Conc: 347.78 ng/ml



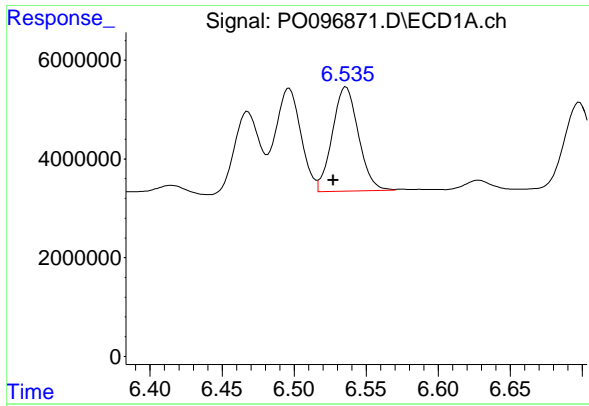
#24 AR-1248-4

R.T.: 6.497 min
 Delta R.T.: 0.009 min
 Response: 25961668
 Conc: 285.78 ng/ml



#24 AR-1248-4

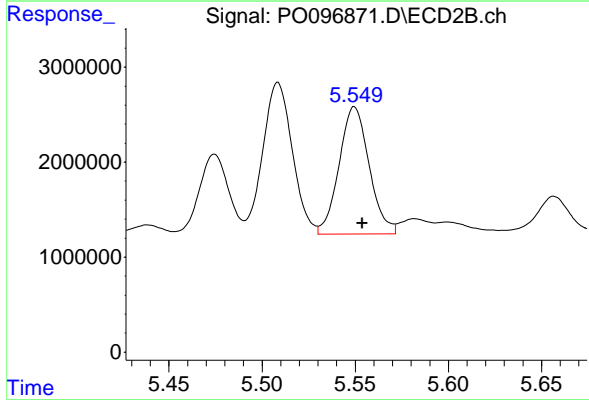
R.T.: 5.156 min
 Delta R.T.: -0.003 min
 Response: 16059751
 Conc: 314.59 ng/ml



#25 AR-1248-5

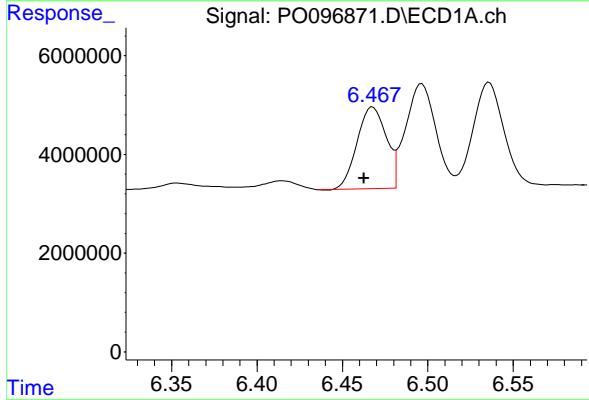
R.T.: 6.536 min
 Delta R.T.: 0.009 min
 Response: 26550816
 Conc: 301.42 ng/ml

Instrument :
 ECD_O
 ClientSampleId :



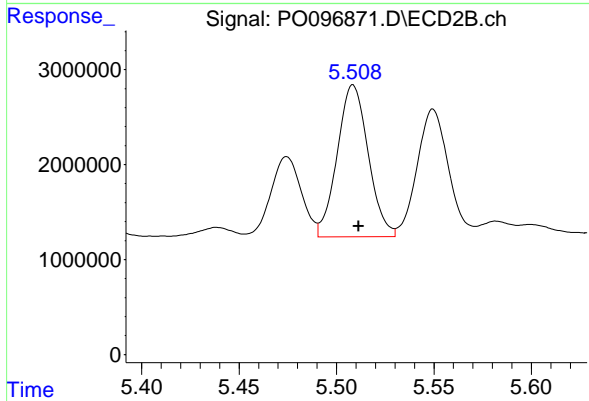
#25 AR-1248-5

R.T.: 5.550 min
 Delta R.T.: -0.004 min
 Response: 15055003
 Conc: 322.02 ng/ml



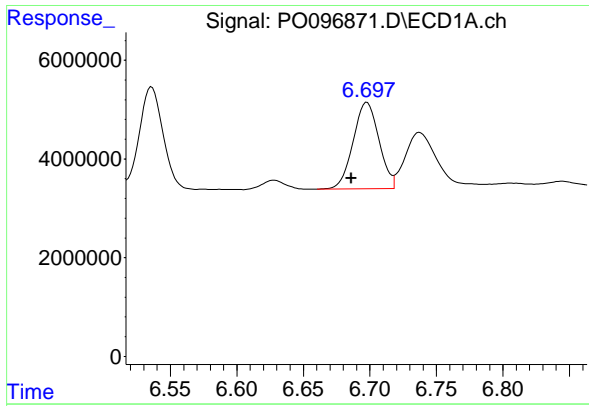
#26 AR-1254-1

R.T.: 6.468 min
 Delta R.T.: 0.005 min
 Response: 19722868
 Conc: 180.46 ng/ml



#26 AR-1254-1

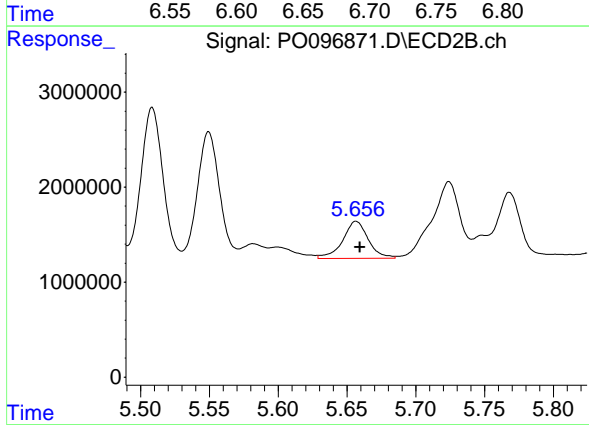
R.T.: 5.508 min
 Delta R.T.: -0.003 min
 Response: 17695186
 Conc: 239.78 ng/ml



#27 AR-1254-2

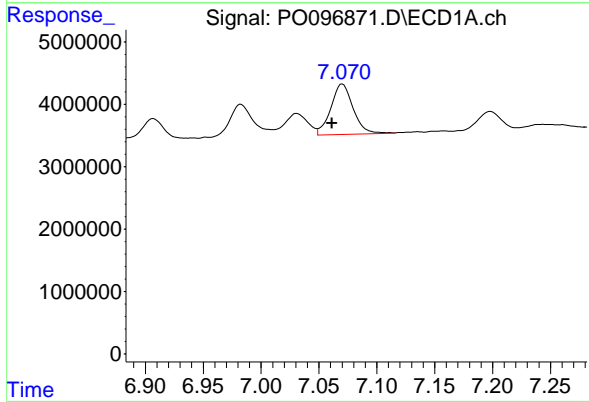
R.T.: 6.698 min
 Delta R.T.: 0.012 min
 Response: 23604366
 Conc: 146.40 ng/ml

Instrument :
 ECD_O
 ClientSampleId :



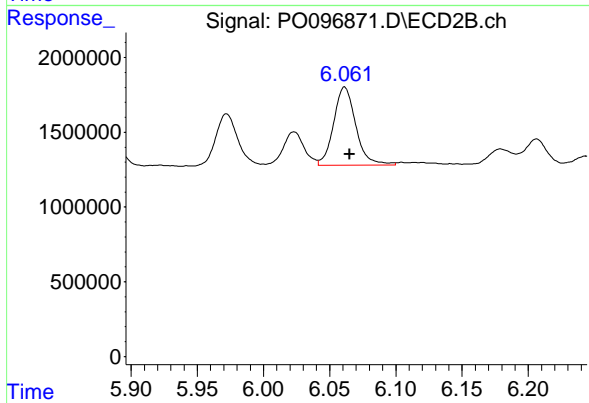
#27 AR-1254-2

R.T.: 5.657 min
 Delta R.T.: -0.003 min
 Response: 5006379
 Conc: 75.99 ng/ml



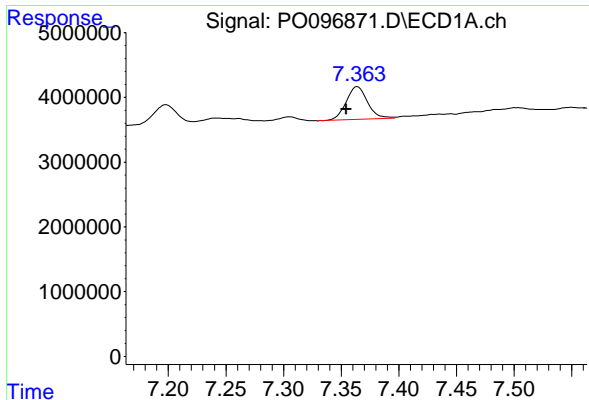
#28 AR-1254-3

R.T.: 7.070 min
 Delta R.T.: 0.009 min
 Response: 10909351
 Conc: 69.62 ng/ml



#28 AR-1254-3

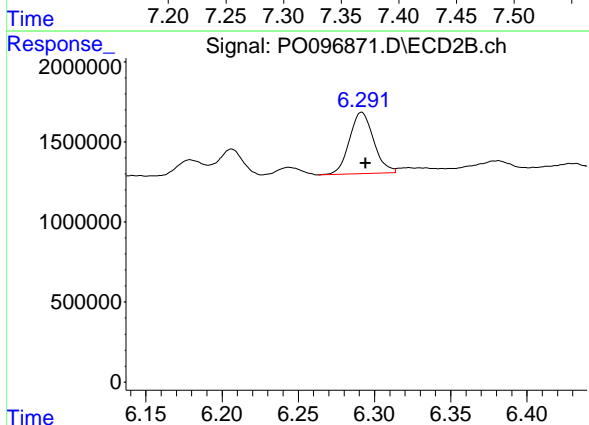
R.T.: 6.061 min
 Delta R.T.: -0.004 min
 Response: 6088260
 Conc: 60.24 ng/ml



#29 AR-1254-4

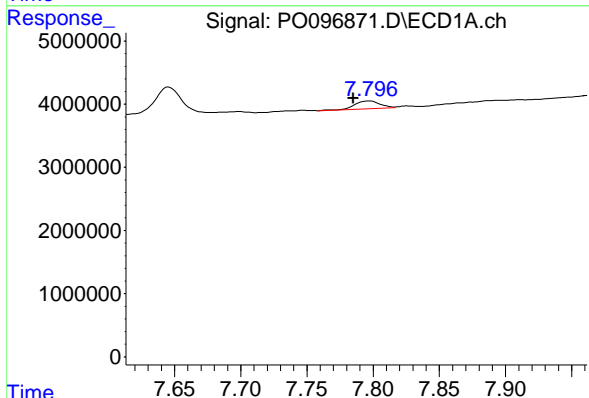
R.T.: 7.364 min
 Delta R.T.: 0.010 min
 Response: 6545515
 Conc: 64.92 ng/ml

Instrument :
 ECD_O
 ClientSampleId :



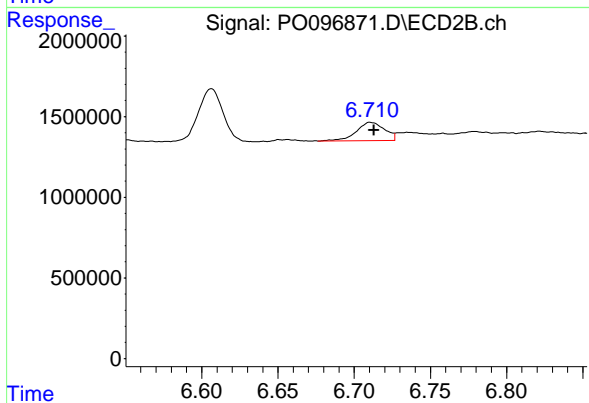
#29 AR-1254-4

R.T.: 6.292 min
 Delta R.T.: -0.003 min
 Response: 4254275
 Conc: 73.51 ng/ml



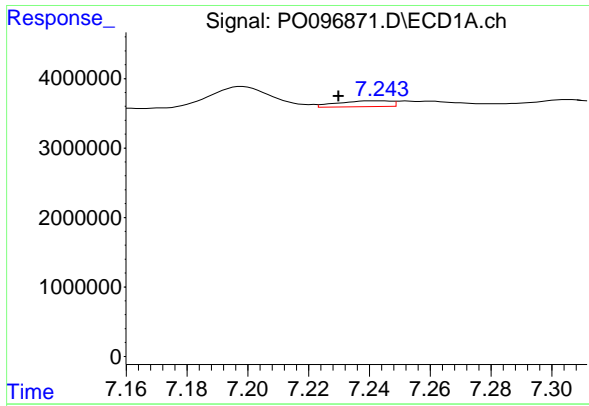
#30 AR-1254-5

R.T.: 7.797 min
 Delta R.T.: 0.012 min
 Response: 1603305
 Conc: 14.29 ng/ml



#30 AR-1254-5

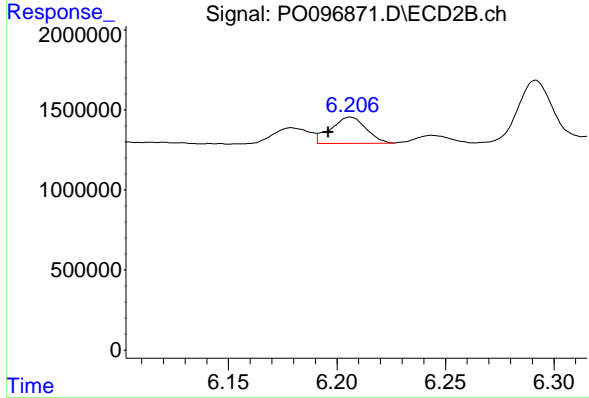
R.T.: 6.711 min
 Delta R.T.: -0.002 min
 Response: 1470076
 Conc: 16.72 ng/ml



#31 AR-1260-1

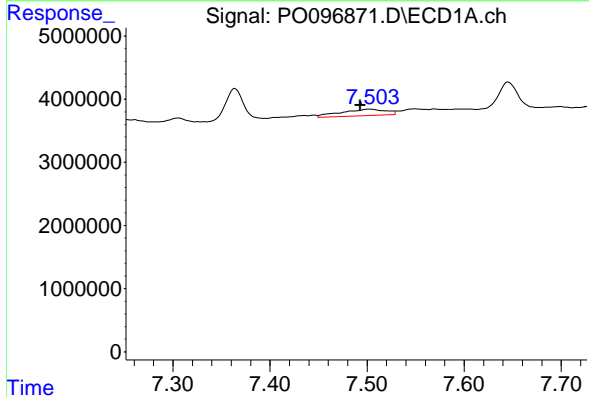
R.T.: 7.243 min
 Delta R.T.: 0.014 min
 Response: 1018609
 Conc: 8.10 ng/ml

Instrument :
 ECD_O
 ClientSampleId :



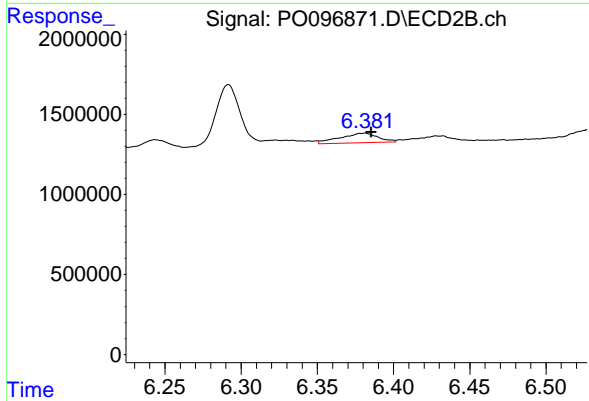
#31 AR-1260-1

R.T.: 6.206 min
 Delta R.T.: 0.010 min
 Response: 1868124
 Conc: 26.55 ng/ml



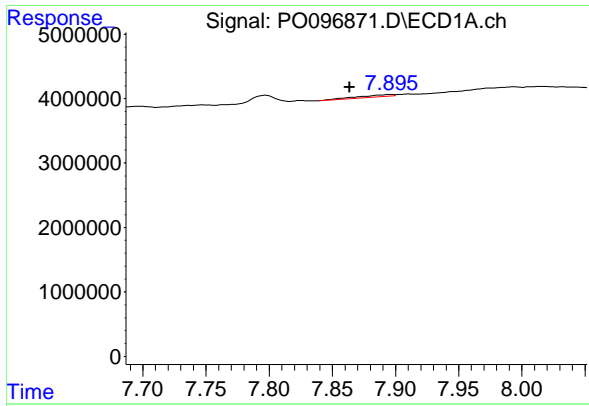
#32 AR-1260-2

R.T.: 7.503 min
 Delta R.T.: 0.010 min
 Response: 3361030
 Conc: 24.95 ng/ml



#32 AR-1260-2

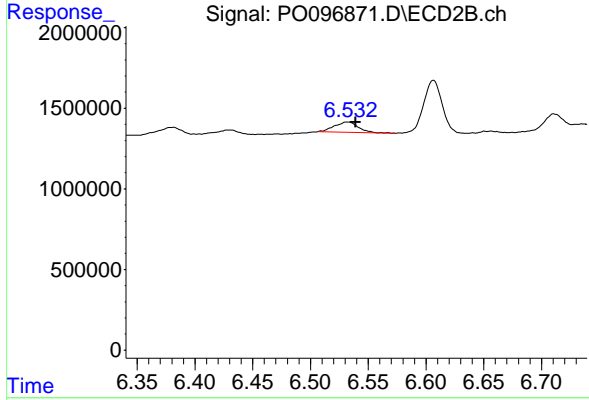
R.T.: 6.381 min
 Delta R.T.: -0.004 min
 Response: 1026293
 Conc: 12.30 ng/ml



#33 AR-1260-3

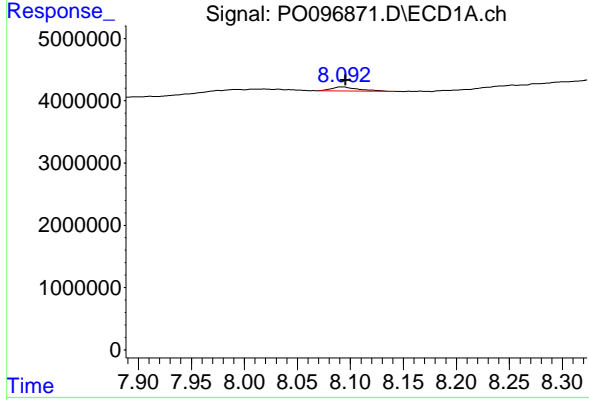
R.T.: 7.896 min
 Delta R.T.: 0.032 min
 Response: 566909
 Conc: 5.46 ng/ml

Instrument :
 ECD_O
 ClientSampleId :



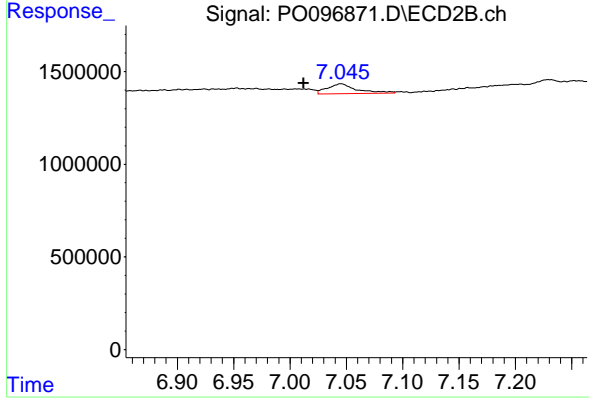
#33 AR-1260-3

R.T.: 6.532 min
 Delta R.T.: -0.007 min
 Response: 909392
 Conc: 11.78 ng/ml



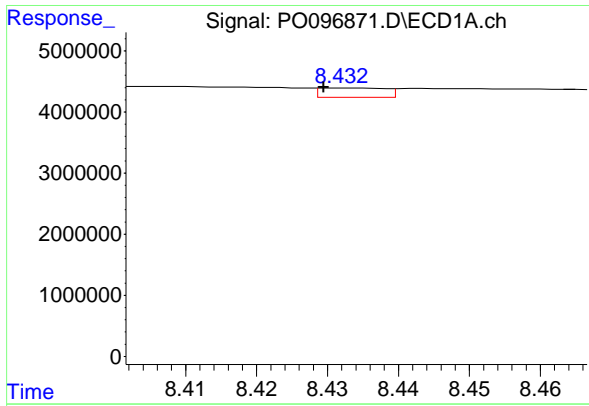
#34 AR-1260-4

R.T.: 8.092 min
 Delta R.T.: -0.003 min
 Response: 1212770
 Conc: 10.85 ng/ml



#34 AR-1260-4

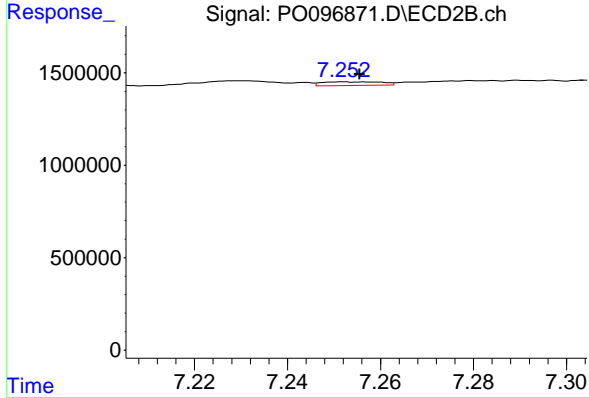
R.T.: 7.046 min
 Delta R.T.: 0.033 min
 Response: 951159
 Conc: 14.84 ng/ml



#35 AR-1260-5

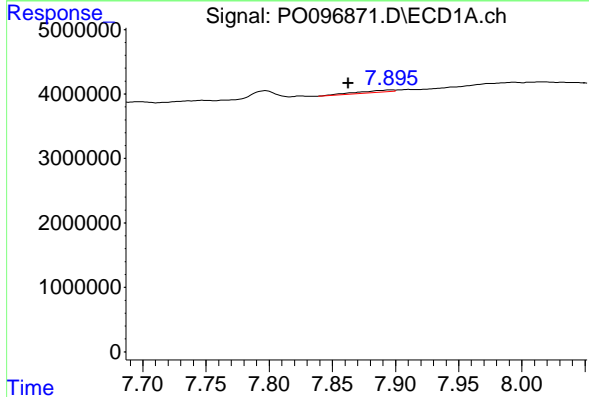
R.T.: 8.432 min
 Delta R.T.: 0.003 min
 Response: 984168
 Conc: 4.69 ng/ml

Instrument :
 ECD_O
 ClientSampleId :



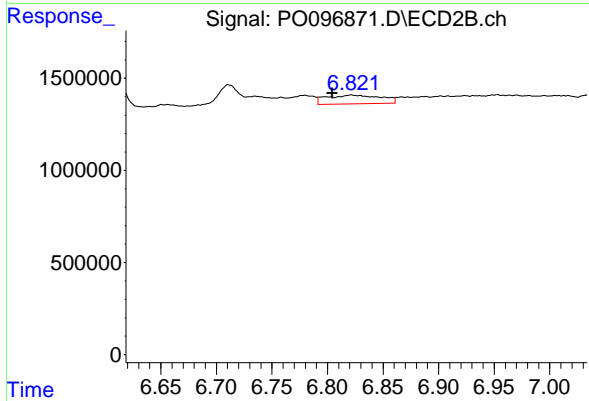
#35 AR-1260-5

R.T.: 7.252 min
 Delta R.T.: -0.003 min
 Response: 174194
 Conc: 1.26 ng/ml



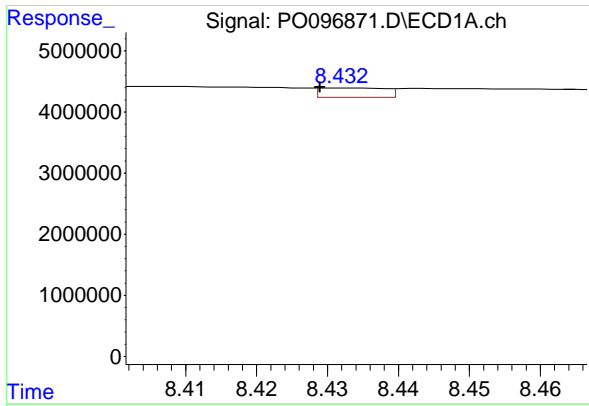
#36 AR-1262-1

R.T.: 7.896 min
 Delta R.T.: 0.033 min
 Response: 566909
 Conc: 3.82 ng/ml



#36 AR-1262-1

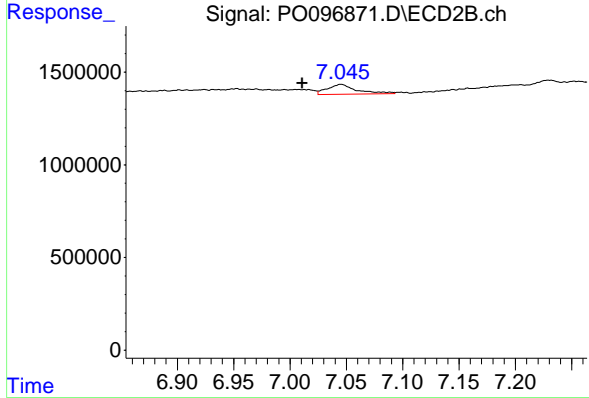
R.T.: 6.822 min
 Delta R.T.: 0.017 min
 Response: 1622506
 Conc: 41.21 ng/ml



#37 AR-1262-2

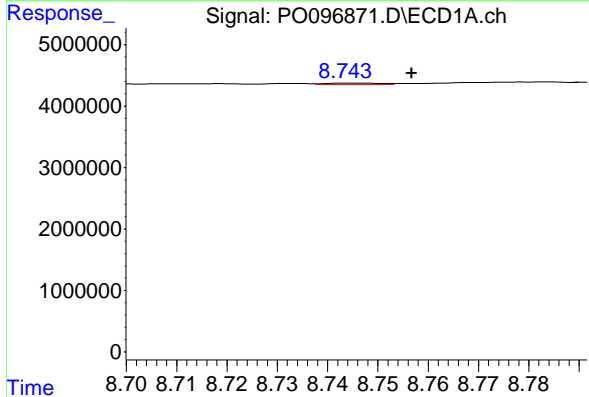
R.T.: 8.432 min
 Delta R.T.: 0.003 min
 Response: 984168
 Conc: 4.25 ng/ml

Instrument :
 ECD_O
 ClientSampleId :



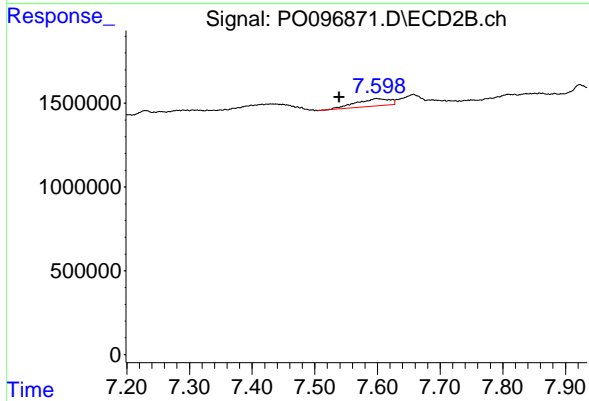
#37 AR-1262-2

R.T.: 7.046 min
 Delta R.T.: 0.034 min
 Response: 951159
 Conc: 11.73 ng/ml



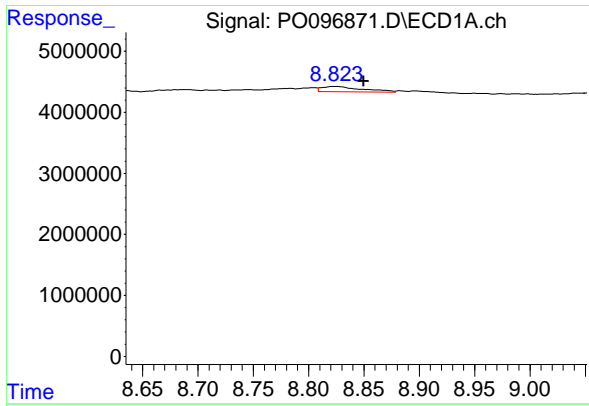
#38 AR-1262-3

R.T.: 8.744 min
 Delta R.T.: -0.013 min
 Response: 153384
 Conc: 0.92 ng/ml



#38 AR-1262-3

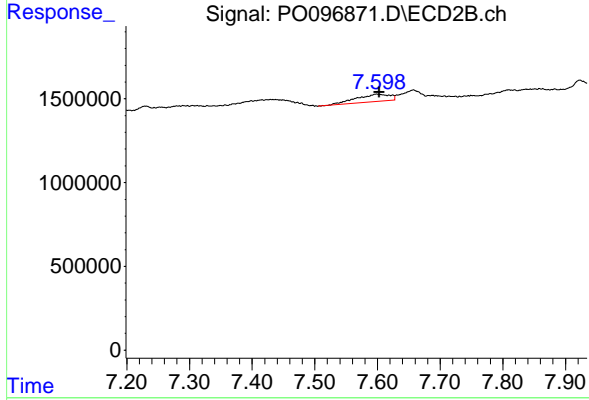
R.T.: 7.599 min
 Delta R.T.: 0.060 min
 Response: 1649524
 Conc: 25.70 ng/ml



#39 AR-1262-4

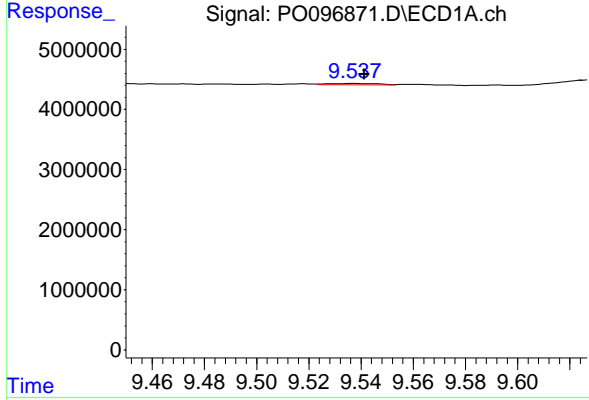
R.T.: 8.824 min
 Delta R.T.: -0.026 min
 Response: 2152653
 Conc: 29.53 ng/ml

Instrument :
 ECD_O
 ClientSampleId :



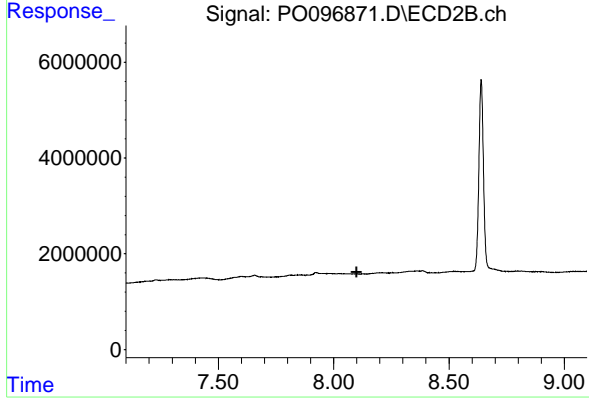
#39 AR-1262-4

R.T.: 7.599 min
 Delta R.T.: -0.004 min
 Response: 1649524
 Conc: 14.52 ng/ml



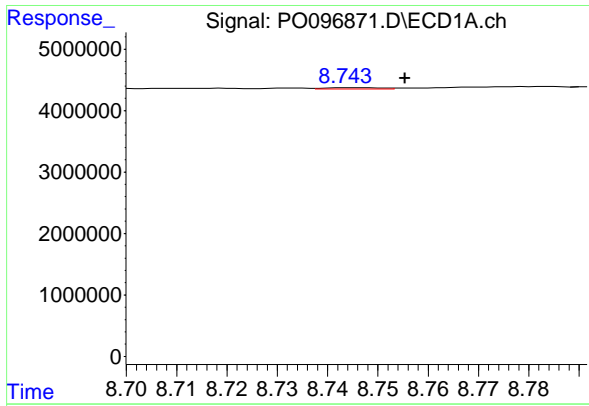
#40 AR-1262-5

R.T.: 9.537 min
 Delta R.T.: -0.004 min
 Response: 336933
 Conc: 4.05 ng/ml



#40 AR-1262-5

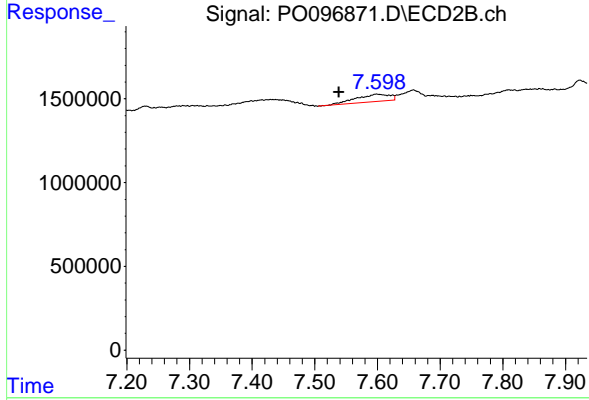
R.T.: 0.000 min
 Exp R.T. : 8.099 min
 Response: 0
 Conc: N.D.



#41 AR-1268-1

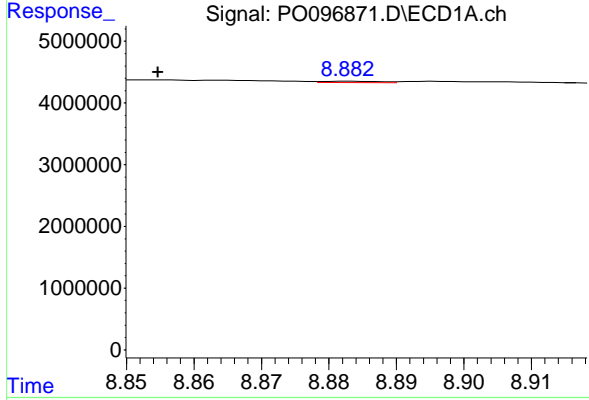
R.T.: 8.744 min
 Delta R.T.: -0.012 min
 Response: 153384
 Conc: 0.50 ng/ml

Instrument :
 ECD_O
 ClientSampleId :



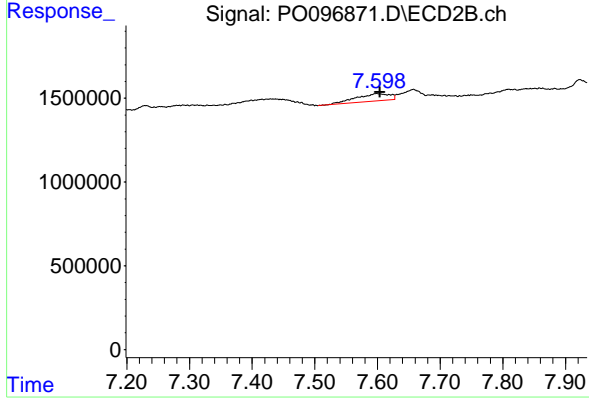
#41 AR-1268-1

R.T.: 7.599 min
 Delta R.T.: 0.061 min
 Response: 1649524
 Conc: 8.90 ng/ml



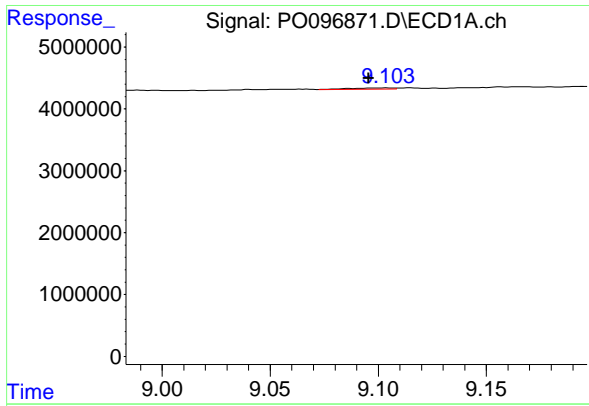
#42 AR-1268-2

R.T.: 8.883 min
 Delta R.T.: 0.028 min
 Response: 134300
 Conc: 0.49 ng/ml



#42 AR-1268-2

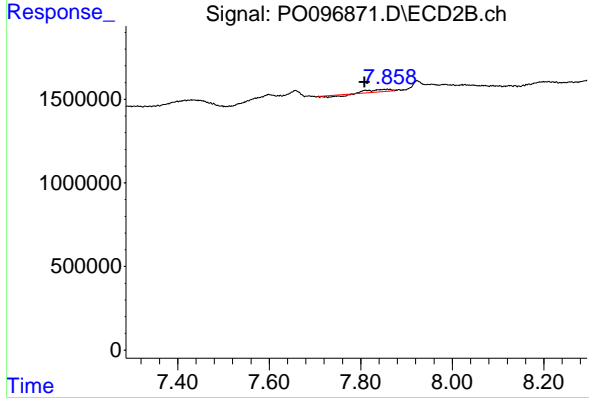
R.T.: 7.599 min
 Delta R.T.: -0.005 min
 Response: 1649524
 Conc: 9.84 ng/ml



#43 AR-1268-3

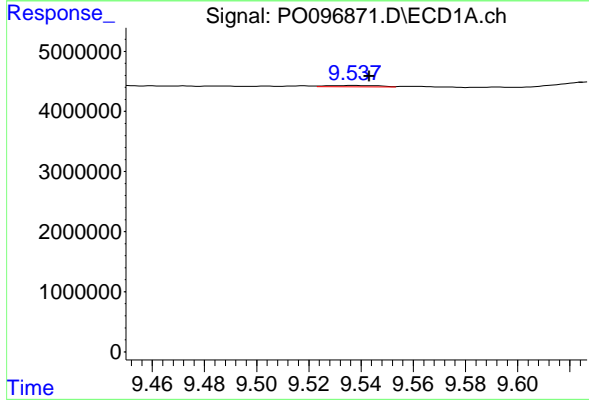
R.T.: 9.105 min
 Delta R.T.: 0.009 min
 Response: 233769
 Conc: 0.92 ng/ml

Instrument :
 ECD_O
 ClientSampleId :



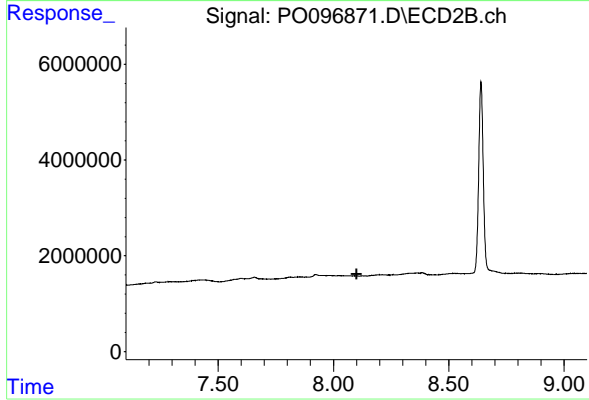
#43 AR-1268-3

R.T.: 7.859 min
 Delta R.T.: 0.050 min
 Response: 242927
 Conc: 1.68 ng/ml



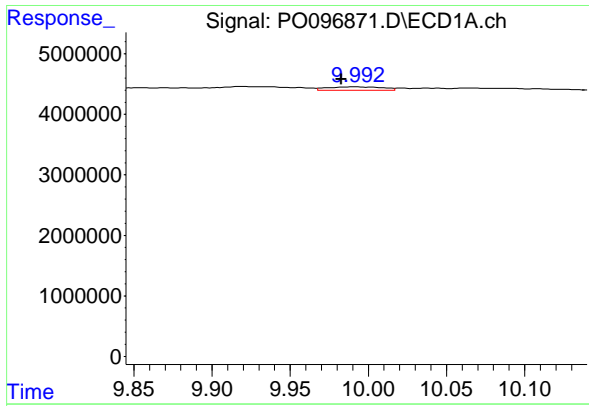
#44 AR-1268-4

R.T.: 9.537 min
 Delta R.T.: -0.006 min
 Response: 336933
 Conc: 3.63 ng/ml



#44 AR-1268-4

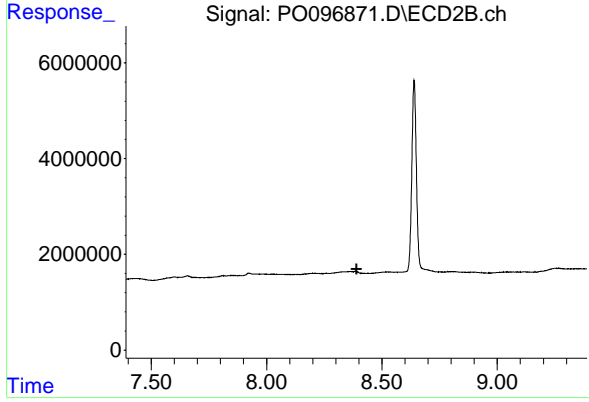
R.T.: 0.000 min
 Exp R.T. : 8.100 min
 Response: 0
 Conc: N.D.



#45 AR-1268-5

R.T.: 9.992 min
 Delta R.T.: 0.009 min
 Response: 1394469
 Conc: 1.73 ng/ml

Instrument :
 ECD_O
 ClientSampleId :



#45 AR-1268-5

R.T.: 0.000 min
 Exp R.T. : 8.390 min
 Response: 0
 Conc: N.D.