

Data Path : Z:\pestpcbsrv\HPCHEM1\ECD_0\Data\P0080923\
 Data File : P0096876.D
 Signal(s) : Signal #1: ECD1A.ch Signal #2: ECD2B.ch
 Acq On : 10 Aug 2023 01:22
 Operator : YP/AJ
 Sample : 03932-04
 Misc :
 ALS Vial : 37 Sample Multiplier: 1

Instrument :
 ECD_0
 ClientSampleId :

Integration File signal 1: autoint1.e
 Integration File signal 2: autoint2.e
 Quant Time: Aug 10 02:45:23 2023
 Quant Method : Z:\pestpcbsrv\HPCHEM1\ECD_0\methods\P0080723.M
 Quant Title : GC EXTRACTABLES
 QLast Update : Tue Aug 08 04:34:41 2023
 Response via : Initial Calibration
 Integrator: ChemStation

Volume Inj. : 2 µl
 Signal #1 Phase : ZB-MR1 Signal #2 Phase: ZB-MR2
 Signal #1 Info : 30Mx0.32mmx 0.50µ Signal #2 Info : 30M x 0.32mm x 0.25µm

Compound	RT#1	RT#2	Resp#1	Resp#2	ng/ml	ng/ml

System Monitoring Compounds						
1) SA Tetrachlo...	4.411	3.619	42807277	19202604	12.932	14.506
2) SA Decachlor...	10.352	8.639	47071330	20830516	21.512	18.005
Target Compounds						
3) L1 AR-1016-1	5.642f	4.678	2141820	392491	22.741	8.853 #
4) L1 AR-1016-2	5.642	4.764f	2141820	533363	16.011	8.719 #
5) L1 AR-1016-3	5.642	4.897	2141820	196341	24.613	6.010 #
6) L1 AR-1016-4	5.787	4.946	643742	508798	9.584	17.799 #
7) L1 AR-1016-5	6.072	5.158	854513	467119	12.239	12.150
8) L2 AR-1221-1	4.598	3.856	2445118	998592	59.995	57.532
9) L2 AR-1221-2	4.721	3.920	1132910	1143796	37.291	88.524 #
10) L2 AR-1221-3	4.799	4.028	1389863	494623	15.878	12.461
11) L3 AR-1232-1	4.799	4.028	1389863	494623	19.057	15.291
12) L3 AR-1232-2	5.332	4.764f	1763132	533363	44.472	18.486 #
13) L3 AR-1232-3	5.642	4.897	2141820	196341	35.013	12.950 #
14) L3 AR-1232-4	5.787	5.005	643742	278543	21.097	18.638
15) L3 AR-1232-5	5.887	5.158	155028	467119	5.540	28.576 #
16) L4 AR-1242-1	5.642f	4.678	2141820	392491	25.554	9.955 #
17) L4 AR-1242-2	5.642	4.764f	2141820	533363	18.188	9.788 #
18) L4 AR-1242-3	5.642	4.897	2141820	196341	28.993	6.640 #
19) L4 AR-1242-4	5.787	5.005	643742	278543	10.814	8.839
20) L4 AR-1242-5	6.508	5.515	854716	612693	15.535	16.816
21) L5 AR-1248-1	5.642f	4.678	2141820	392491	36.554	13.986 #
22) L5 AR-1248-2	5.887	4.946	155028	508798	1.649	12.005 #
23) L5 AR-1248-3	6.072	5.005	854513	278543	8.737	6.350 #
24) L5 AR-1248-4	6.508	5.158	854716	467119	9.409	9.150
25) L5 AR-1248-5	6.508	5.562	854716	668324	9.703	14.295 #
26) L6 AR-1254-1	6.450	5.515	1115066	612693	10.203	8.303
27) L6 AR-1254-2	6.672	5.653	2639189	411231	16.369	6.242 #
28) L6 AR-1254-3	7.025f	6.075	1232416	5613571	7.865	55.546 #
29) L6 AR-1254-4	7.380	6.307	6445837	923747	63.935	15.961 #
30) L6 AR-1254-5	7.788	6.725	3874413	408860	34.527	4.651 #
31) L7 AR-1260-1	7.224	6.182	16388322	83594	130.389	1.188 #
32) L7 AR-1260-2	7.510	6.392	5233067	9605	38.840	0.115 #
33) L7 AR-1260-3	7.854	6.545	226971	2340472	2.187	30.309 #
34) L7 AR-1260-4	8.088	7.025	1538708	295684	13.763	4.614 #
35) L7 AR-1260-5	8.447	7.218f	2944394	463417	14.022	3.343 #
36) L8 AR-1262-1	7.854	6.803	226971	760732	1.528	19.323 #
37) L8 AR-1262-2	8.447	7.025	2944394	295684	12.721	3.646 #
38) L8 AR-1262-3	8.764	7.544	388566	69713	2.330	1.086 #
39) L8 AR-1262-4	8.817	7.619	13916197	68786	190.876	0.606 #
40) L8 AR-1262-5	9.517	8.103	6462548	1228621	77.602	23.394 #
41) L9 AR-1268-1	8.764	7.544	388566	69713	1.264	0.376 #

Data Path : Z:\pestpcbsrv\HPCHEM1\ECD_O\Data\P0080923\
 Data File : P0096876.D
 Signal(s) : Signal #1: ECD1A.ch Signal #2: ECD2B.ch
 Acq On : 10 Aug 2023 01:22
 Operator : YP/AJ
 Sample : 03932-04
 Misc :
 ALS Vial : 37 Sample Multiplier: 1

Instrument :
 ECD_O
 ClientSampleId :

Integration File signal 1: autoint1.e
 Integration File signal 2: autoint2.e
 Quant Time: Aug 10 02:45:23 2023
 Quant Method : Z:\pestpcbsrv\HPCHEM1\ECD_O\methods\P0080723.M
 Quant Title : GC EXTRACTABLES
 QLast Update : Tue Aug 08 04:34:41 2023
 Response via : Initial Calibration
 Integrator: ChemStation

Volume Inj. : 2 µl
 Signal #1 Phase : ZB-MR1 Signal #2 Phase: ZB-MR2
 Signal #1 Info : 30Mx0.32mmx 0.50µ Signal #2 Info : 30M x 0.32mm x 0.25µm

	Compound	RT#1	RT#2	Resp#1	Resp#2	ng/ml	ng/ml
42)	L9 AR-1268-2	8.817f	7.619	13916197	68786	50.753	0.410 #
43)	L9 AR-1268-3	9.125	7.785	1946085	9521691	7.620	65.903 #
44)	L9 AR-1268-4	9.517	8.103	6462548	1228621	69.705	20.624 #
45)	L9 AR-1268-5	9.964	8.374	1263302	829687	1.564	1.995 #

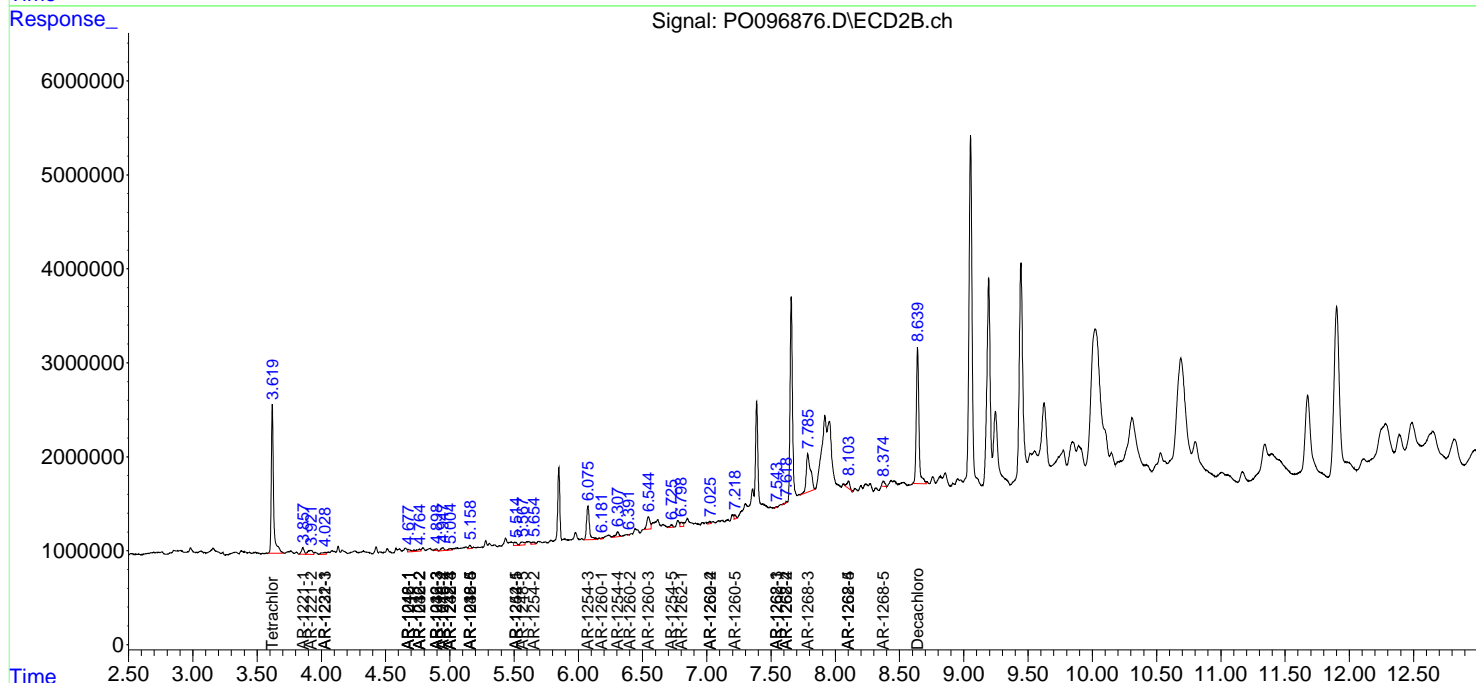
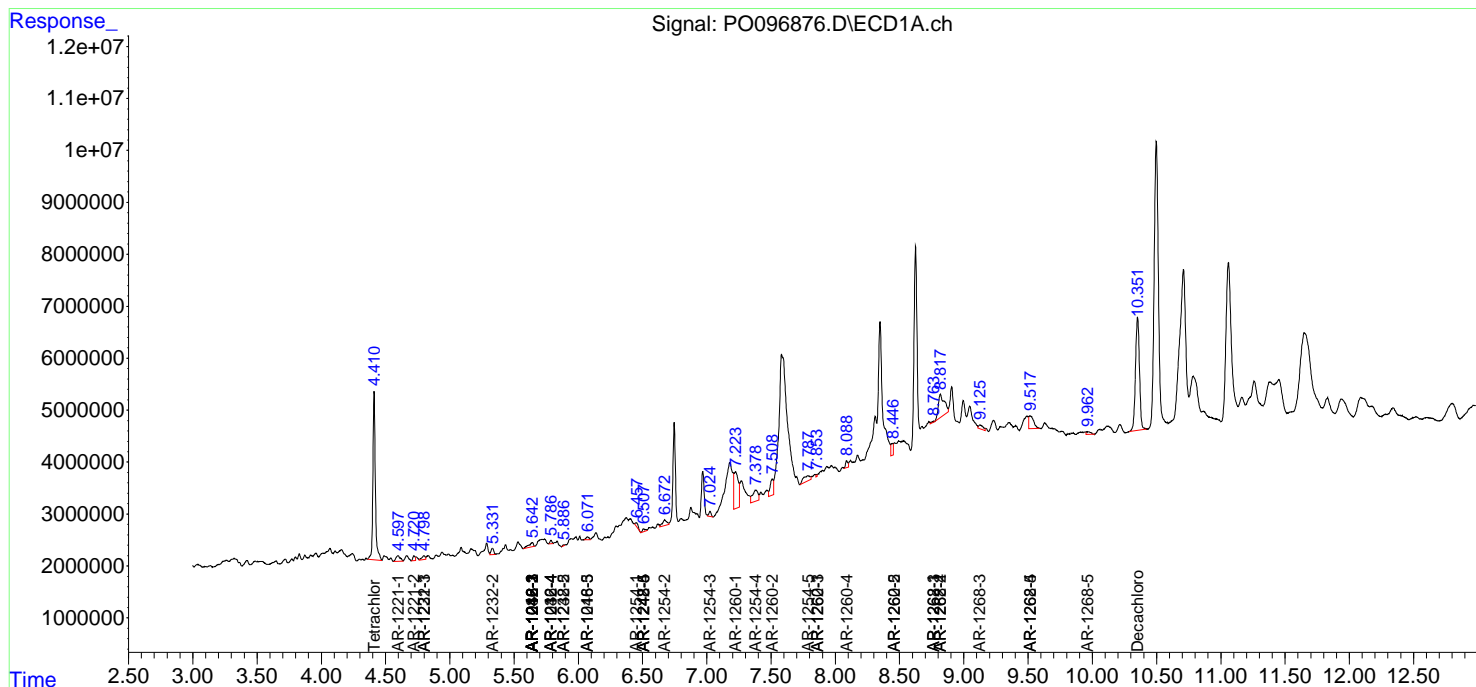
(f)=RT Delta > 1/2 Window (#)=Amounts differ by > 25% (m)=manual int.

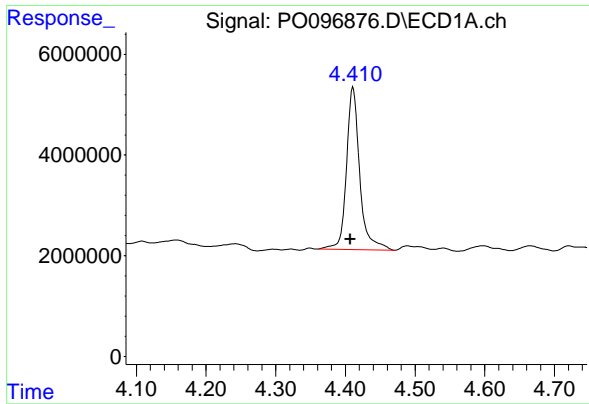
Data Path : Z:\pestpcbsrv\HPCHEM1\ECD_O\Data\PO080923\
 Data File : PO096876.D
 Signal(s) : Signal #1: ECD1A.ch Signal #2: ECD2B.ch
 Acq On : 10 Aug 2023 01:22
 Operator : YP/AJ
 Sample : 03932-04
 Misc :
 ALS Vial : 37 Sample Multiplier: 1

Instrument :
 ECD_O
 ClientSampleId :

Integration File signal 1: autoint1.e
 Integration File signal 2: autoint2.e
 Quant Time: Aug 10 02:45:23 2023
 Quant Method : Z:\pestpcbsrv\HPCHEM1\ECD_O\methods\PO080723.M
 Quant Title : GC EXTRACTABLES
 QLast Update : Tue Aug 08 04:34:41 2023
 Response via : Initial Calibration
 Integrator: ChemStation

Volume Inj. : 2 µl
 Signal #1 Phase : ZB-MR1 Signal #2 Phase: ZB-MR2
 Signal #1 Info : 30Mx0.32mmx 0.50µ Signal #2 Info : 30M x 0.32mm x 0.25µm

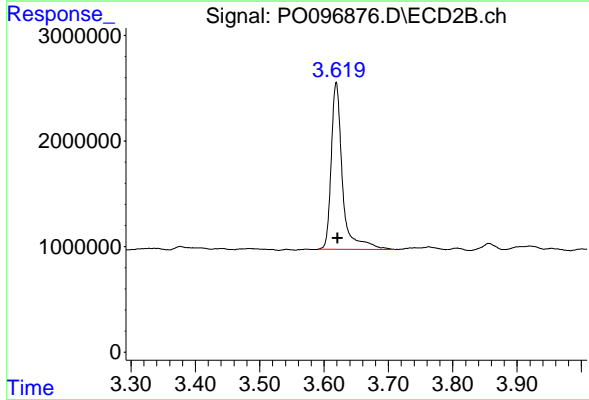




#1 Tetrachloro-m-xylene

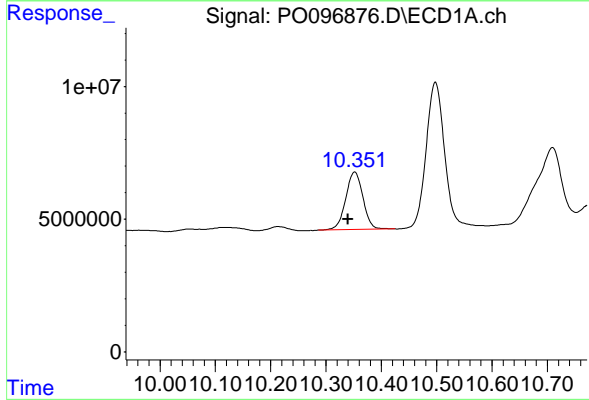
R.T.: 4.411 min
 Delta R.T.: 0.004 min
 Response: 42807277
 Conc: 12.93 ng/ml

Instrument :
 ECD_O
 ClientSampleId :



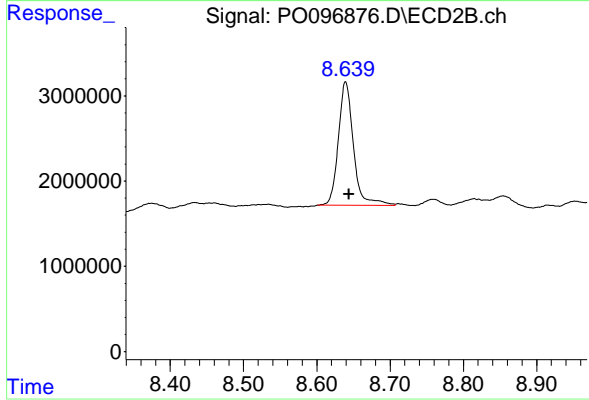
#1 Tetrachloro-m-xylene

R.T.: 3.619 min
 Delta R.T.: -0.002 min
 Response: 19202604
 Conc: 14.51 ng/ml



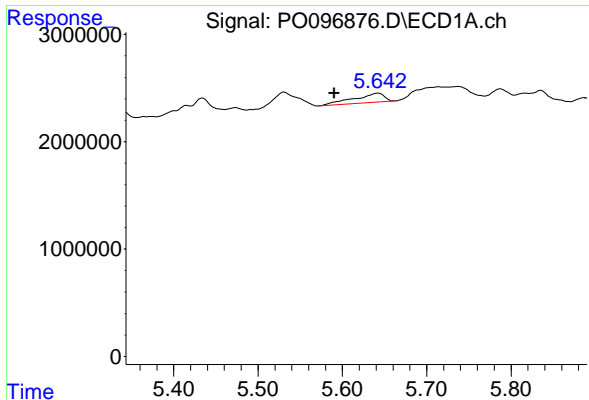
#2 Decachlorobiphenyl

R.T.: 10.352 min
 Delta R.T.: 0.012 min
 Response: 47071330
 Conc: 21.51 ng/ml



#2 Decachlorobiphenyl

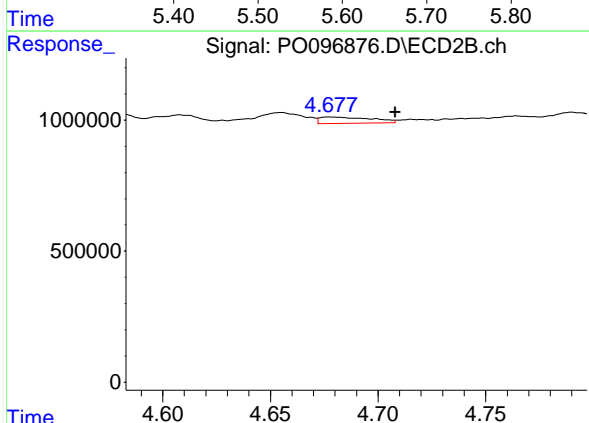
R.T.: 8.639 min
 Delta R.T.: -0.005 min
 Response: 20830516
 Conc: 18.00 ng/ml



#3 AR-1016-1

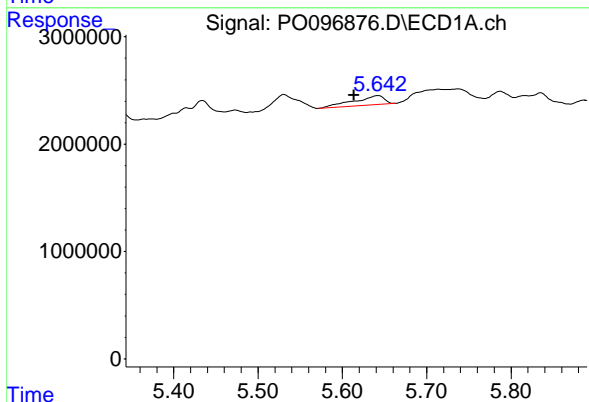
R.T.: 5.642 min
 Delta R.T.: 0.051 min
 Response: 2141820
 Conc: 22.74 ng/ml

Instrument :
 ECD_O
 ClientSampleId :



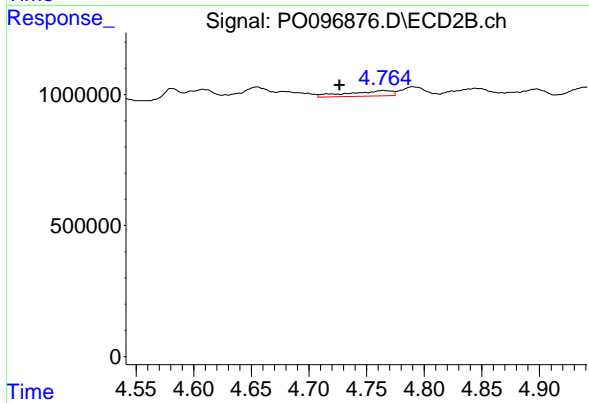
#3 AR-1016-1

R.T.: 4.678 min
 Delta R.T.: -0.030 min
 Response: 392491
 Conc: 8.85 ng/ml



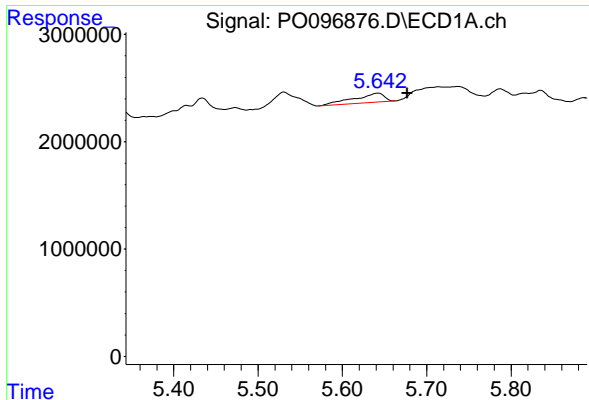
#4 AR-1016-2

R.T.: 5.642 min
 Delta R.T.: 0.028 min
 Response: 2141820
 Conc: 16.01 ng/ml



#4 AR-1016-2

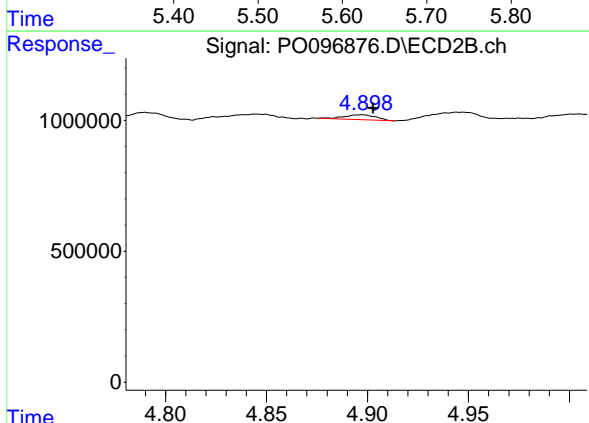
R.T.: 4.764 min
 Delta R.T.: 0.038 min
 Response: 533363
 Conc: 8.72 ng/ml



#5 AR-1016-3

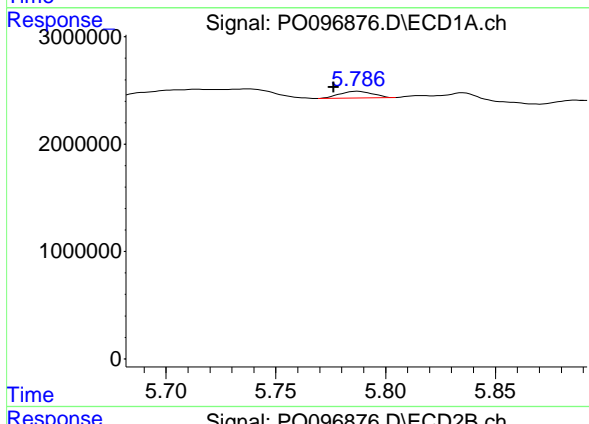
R.T.: 5.642 min
 Delta R.T.: -0.035 min
 Response: 2141820
 Conc: 24.61 ng/ml

Instrument :
 ECD_O
 ClientSampleId :



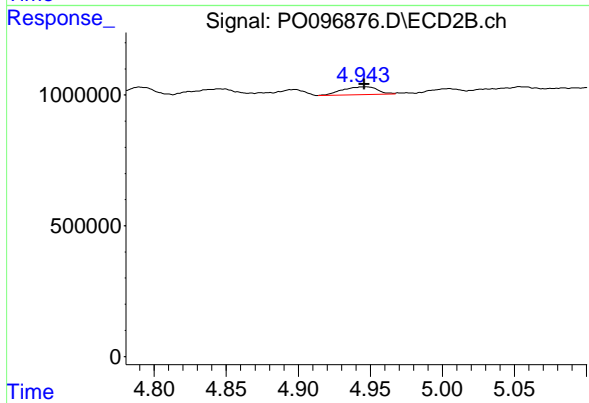
#5 AR-1016-3

R.T.: 4.897 min
 Delta R.T.: -0.005 min
 Response: 196341
 Conc: 6.01 ng/ml



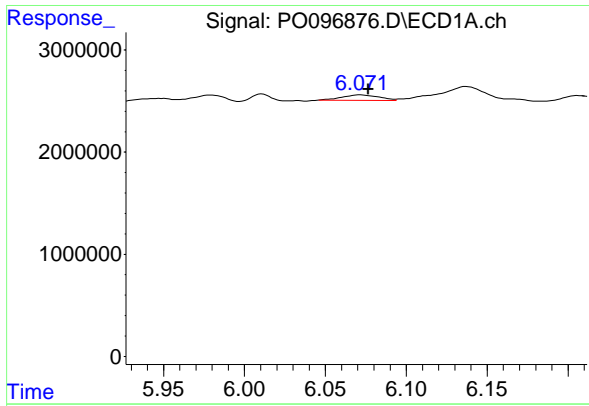
#6 AR-1016-4

R.T.: 5.787 min
 Delta R.T.: 0.011 min
 Response: 643742
 Conc: 9.58 ng/ml



#6 AR-1016-4

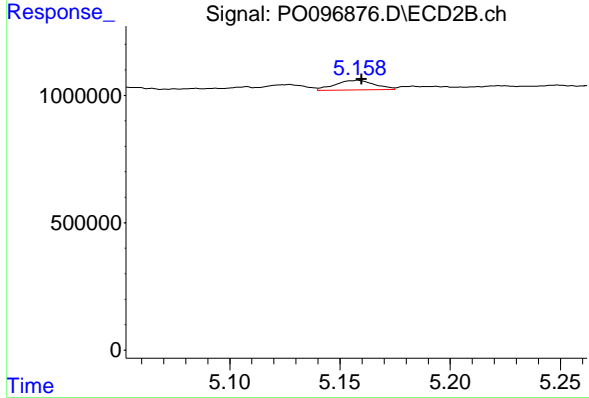
R.T.: 4.946 min
 Delta R.T.: 0.000 min
 Response: 508798
 Conc: 17.80 ng/ml



#7 AR-1016-5

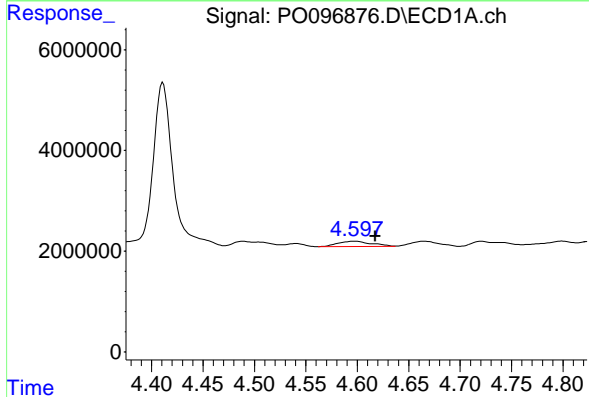
R.T.: 6.072 min
 Delta R.T.: -0.005 min
 Response: 854513
 Conc: 12.24 ng/ml

Instrument :
 ECD_O
 ClientSampleId :



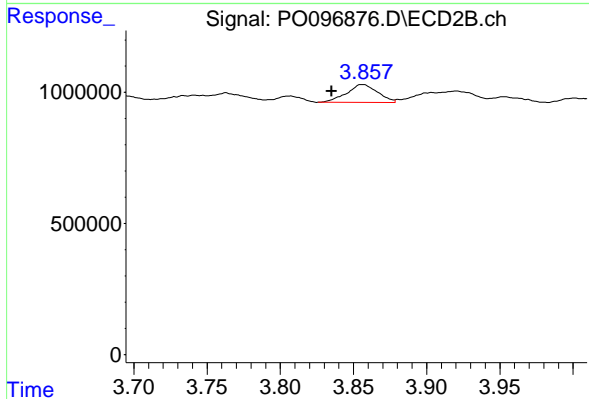
#7 AR-1016-5

R.T.: 5.158 min
 Delta R.T.: -0.002 min
 Response: 467119
 Conc: 12.15 ng/ml



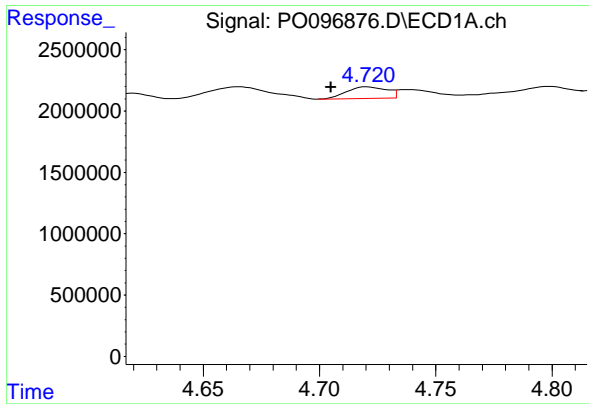
#8 AR-1221-1

R.T.: 4.598 min
 Delta R.T.: -0.020 min
 Response: 2445118
 Conc: 60.00 ng/ml



#8 AR-1221-1

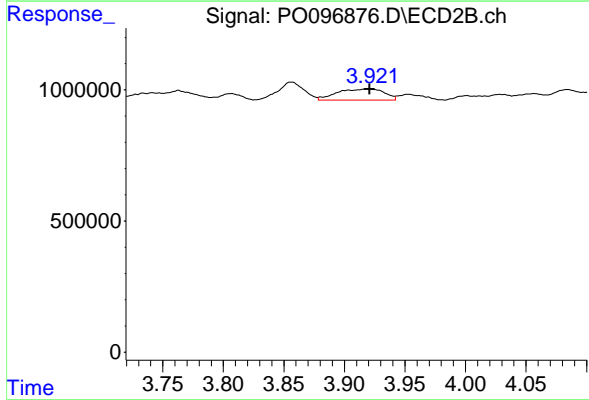
R.T.: 3.856 min
 Delta R.T.: 0.021 min
 Response: 998592
 Conc: 57.53 ng/ml



#9 AR-1221-2

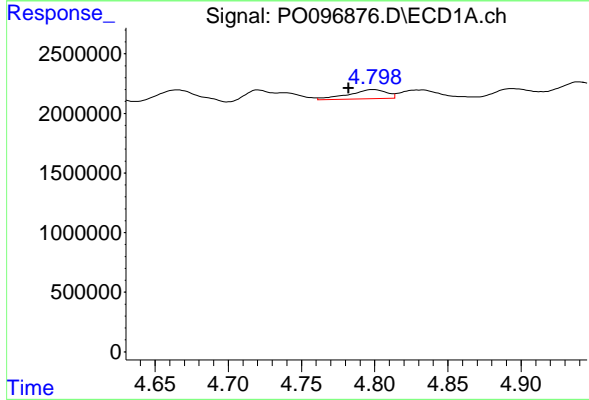
R.T.: 4.721 min
 Delta R.T.: 0.016 min
 Response: 1132910
 Conc: 37.29 ng/ml

Instrument :
 ECD_O
 ClientSampleId :



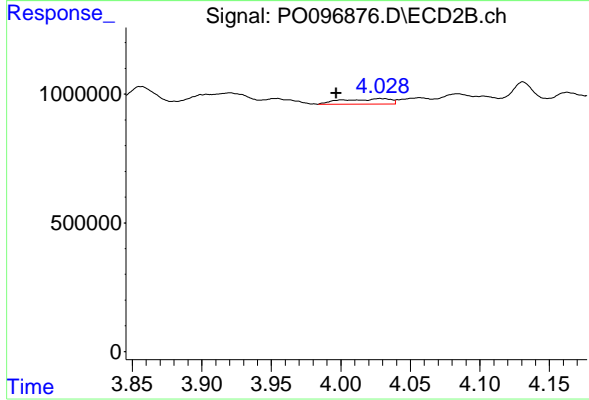
#9 AR-1221-2

R.T.: 3.920 min
 Delta R.T.: 0.000 min
 Response: 1143796
 Conc: 88.52 ng/ml



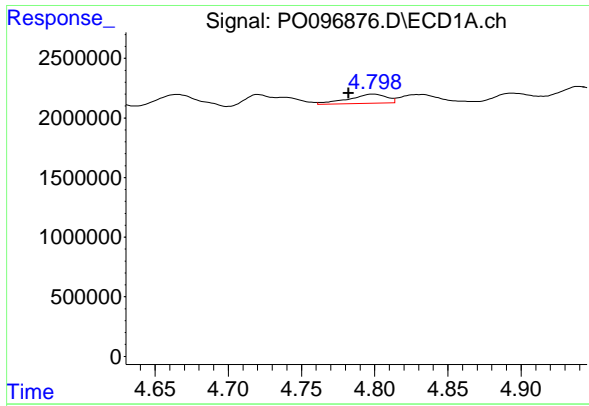
#10 AR-1221-3

R.T.: 4.799 min
 Delta R.T.: 0.017 min
 Response: 1389863
 Conc: 15.88 ng/ml



#10 AR-1221-3

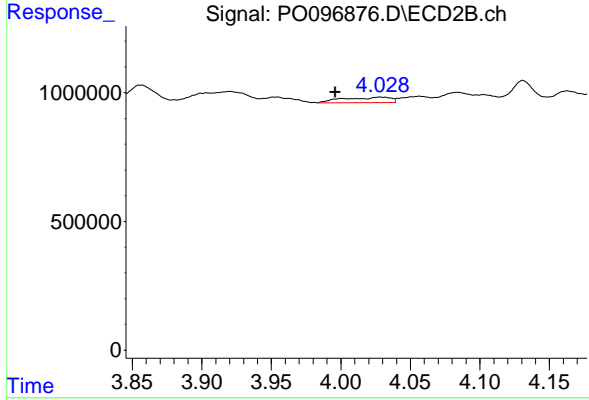
R.T.: 4.028 min
 Delta R.T.: 0.032 min
 Response: 494623
 Conc: 12.46 ng/ml



#11 AR-1232-1

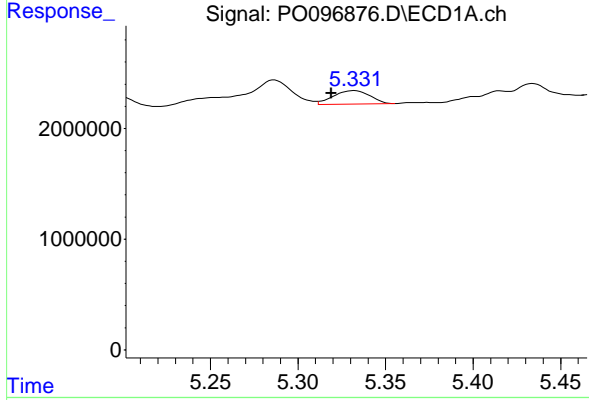
R.T.: 4.799 min
 Delta R.T.: 0.017 min
 Response: 1389863
 Conc: 19.06 ng/ml

Instrument :
 ECD_O
 ClientSampleId :



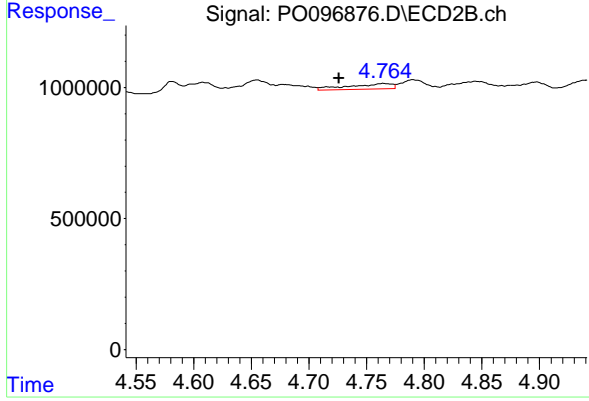
#11 AR-1232-1

R.T.: 4.028 min
 Delta R.T.: 0.032 min
 Response: 494623
 Conc: 15.29 ng/ml



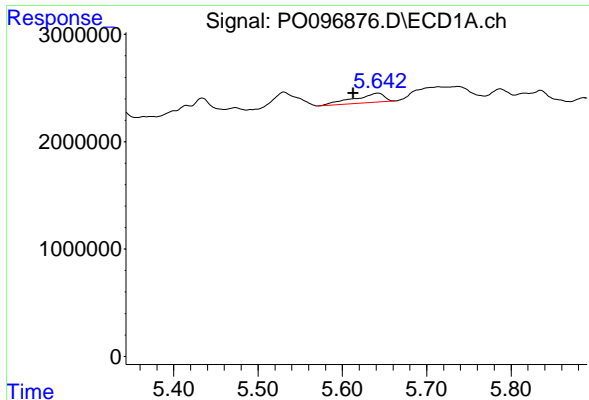
#12 AR-1232-2

R.T.: 5.332 min
 Delta R.T.: 0.013 min
 Response: 1763132
 Conc: 44.47 ng/ml



#12 AR-1232-2

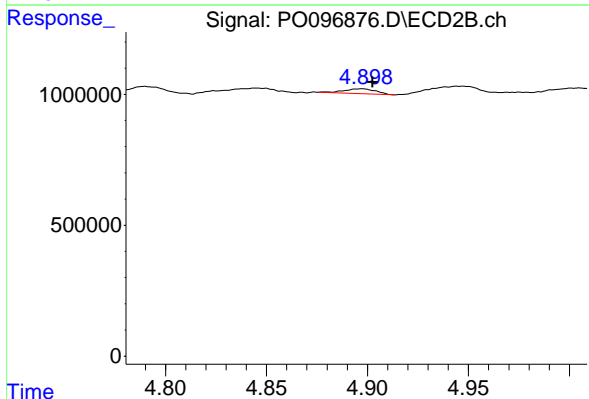
R.T.: 4.764 min
 Delta R.T.: 0.038 min
 Response: 533363
 Conc: 18.49 ng/ml



#13 AR-1232-3

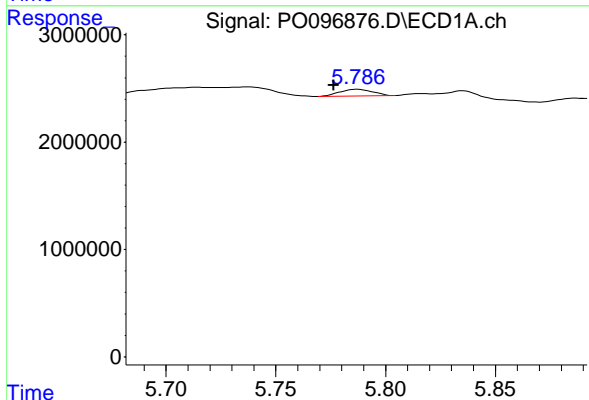
R.T.: 5.642 min
 Delta R.T.: 0.029 min
 Response: 2141820
 Conc: 35.01 ng/ml

Instrument :
 ECD_O
 ClientSampleId :



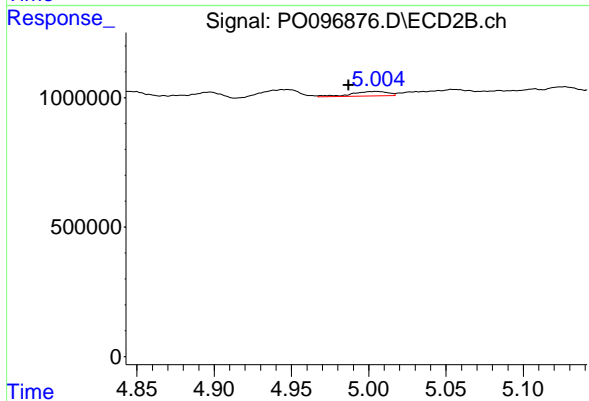
#13 AR-1232-3

R.T.: 4.897 min
 Delta R.T.: -0.005 min
 Response: 196341
 Conc: 12.95 ng/ml



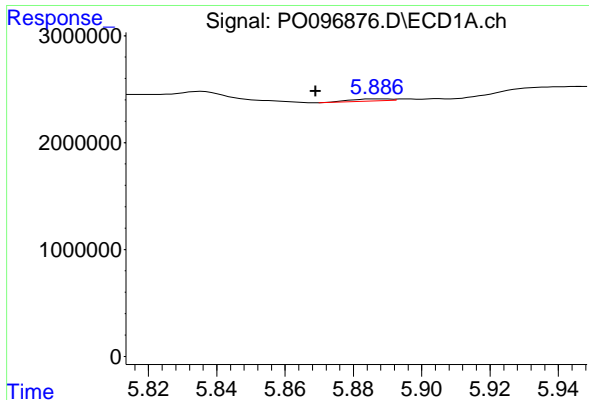
#14 AR-1232-4

R.T.: 5.787 min
 Delta R.T.: 0.011 min
 Response: 643742
 Conc: 21.10 ng/ml



#14 AR-1232-4

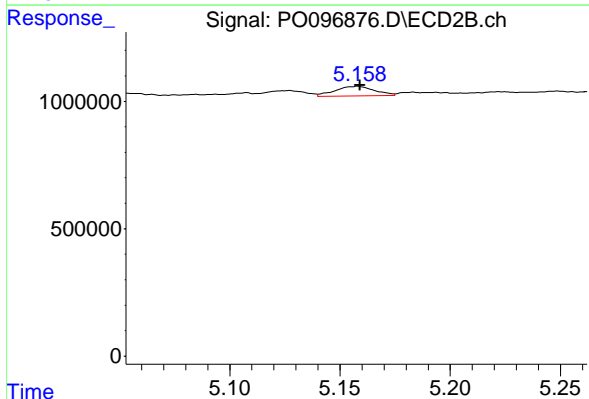
R.T.: 5.005 min
 Delta R.T.: 0.018 min
 Response: 278543
 Conc: 18.64 ng/ml



#15 AR-1232-5

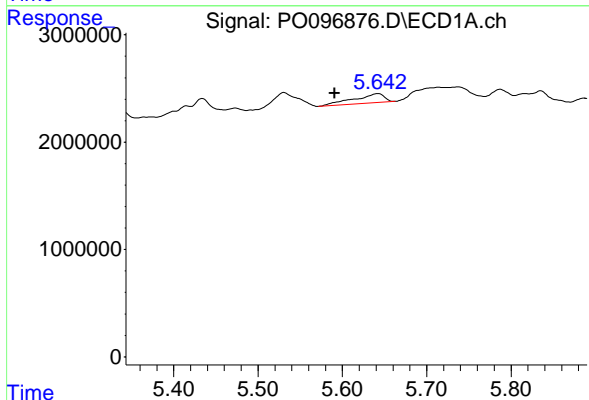
R.T.: 5.887 min
 Delta R.T.: 0.018 min
 Response: 155028
 Conc: 5.54 ng/ml

Instrument :
 ECD_O
 ClientSampleId :



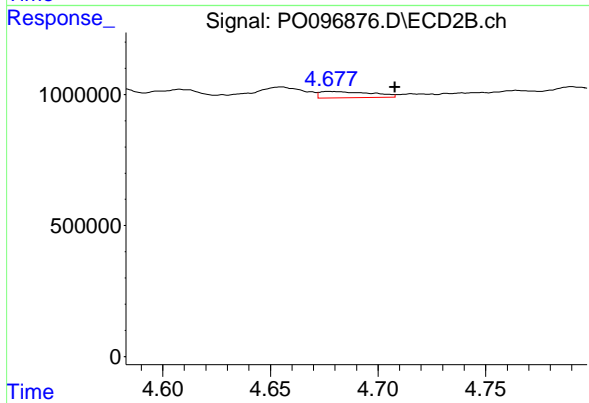
#15 AR-1232-5

R.T.: 5.158 min
 Delta R.T.: -0.001 min
 Response: 467119
 Conc: 28.58 ng/ml



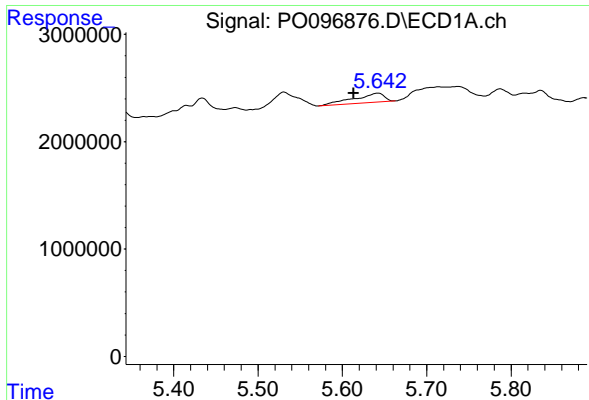
#16 AR-1242-1

R.T.: 5.642 min
 Delta R.T.: 0.051 min
 Response: 2141820
 Conc: 25.55 ng/ml



#16 AR-1242-1

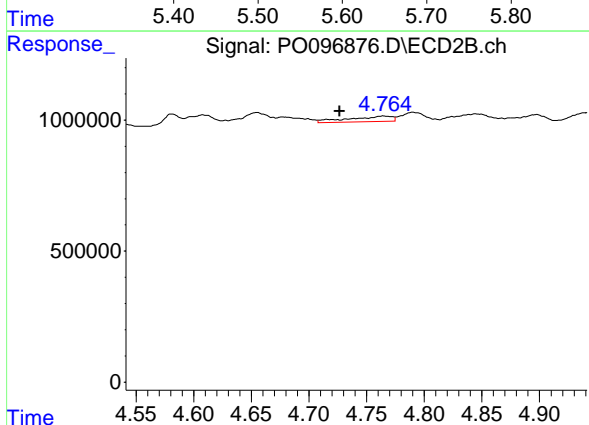
R.T.: 4.678 min
 Delta R.T.: -0.030 min
 Response: 392491
 Conc: 9.96 ng/ml



#17 AR-1242-2

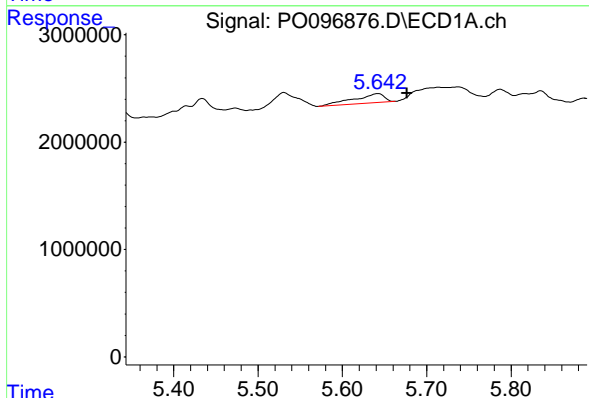
R.T.: 5.642 min
 Delta R.T.: 0.029 min
 Response: 2141820
 Conc: 18.19 ng/ml

Instrument :
 ECD_O
 ClientSampleId :



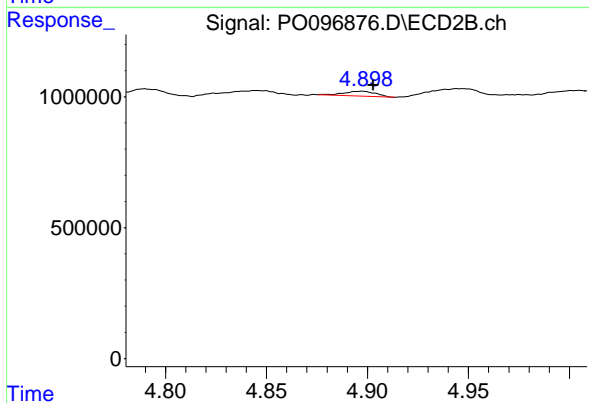
#17 AR-1242-2

R.T.: 4.764 min
 Delta R.T.: 0.038 min
 Response: 533363
 Conc: 9.79 ng/ml



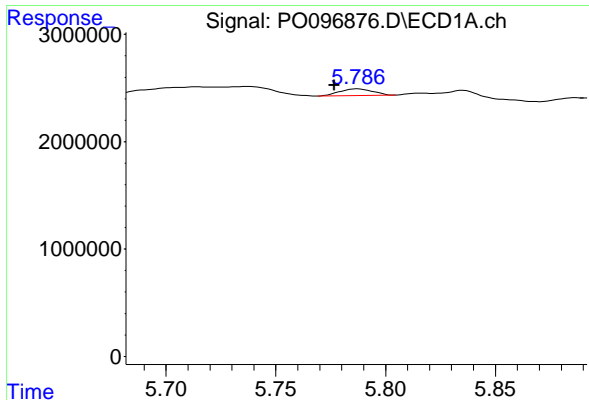
#18 AR-1242-3

R.T.: 5.642 min
 Delta R.T.: -0.035 min
 Response: 2141820
 Conc: 28.99 ng/ml



#18 AR-1242-3

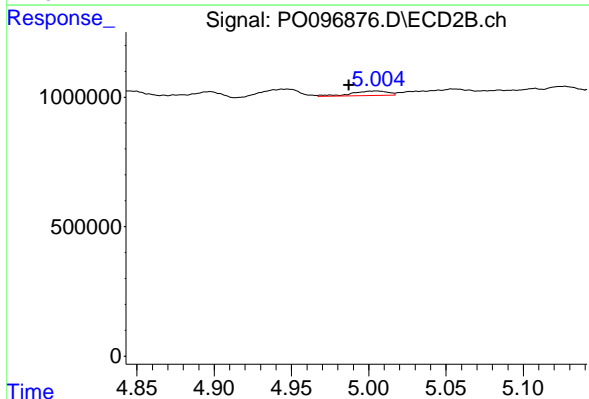
R.T.: 4.897 min
 Delta R.T.: -0.006 min
 Response: 196341
 Conc: 6.64 ng/ml



#19 AR-1242-4

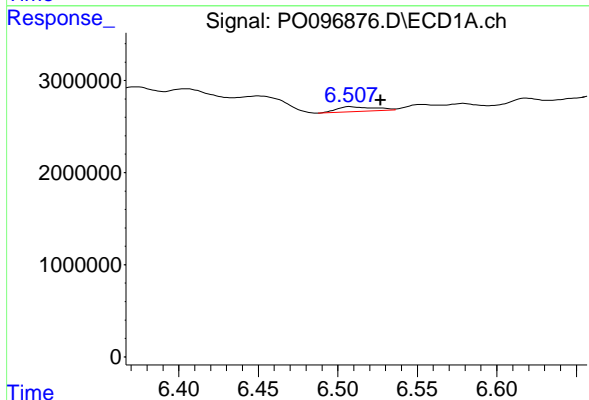
R.T.: 5.787 min
 Delta R.T.: 0.011 min
 Response: 643742
 Conc: 10.81 ng/ml

Instrument :
 ECD_O
 ClientSampleId :



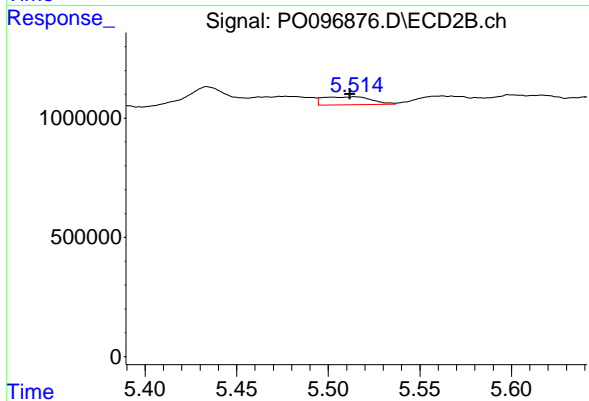
#19 AR-1242-4

R.T.: 5.005 min
 Delta R.T.: 0.017 min
 Response: 278543
 Conc: 8.84 ng/ml



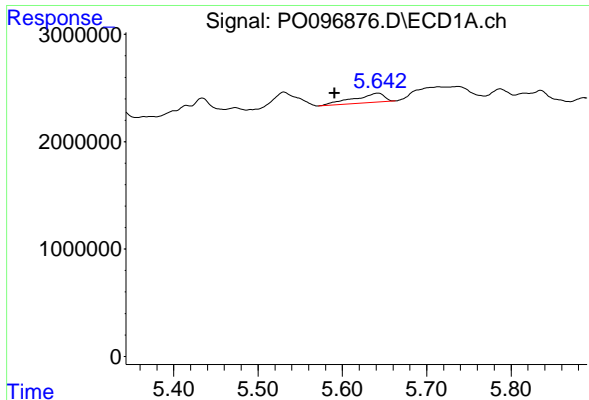
#20 AR-1242-5

R.T.: 6.508 min
 Delta R.T.: -0.019 min
 Response: 854716
 Conc: 15.53 ng/ml



#20 AR-1242-5

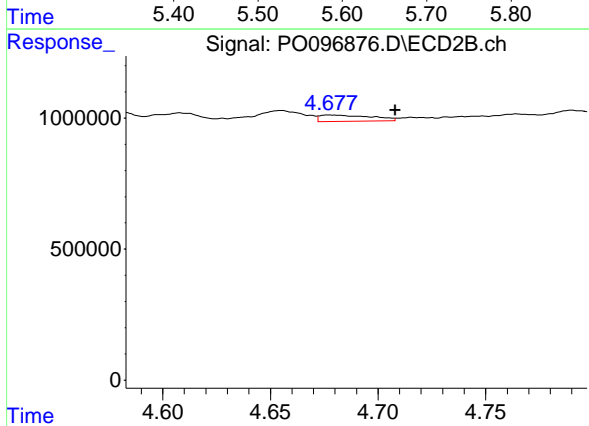
R.T.: 5.515 min
 Delta R.T.: 0.003 min
 Response: 612693
 Conc: 16.82 ng/ml



#21 AR-1248-1

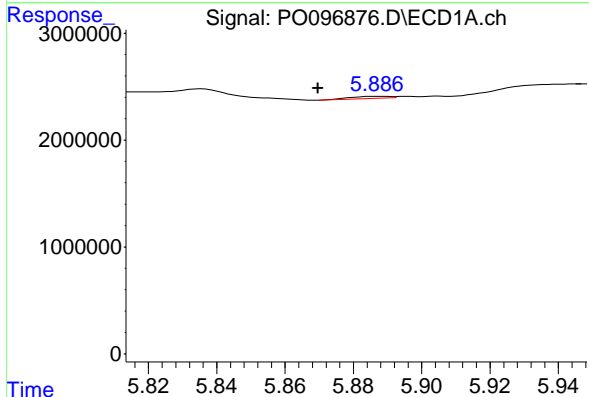
R.T.: 5.642 min
 Delta R.T.: 0.051 min
 Response: 2141820
 Conc: 36.55 ng/ml

Instrument :
 ECD_O
 ClientSampleId :



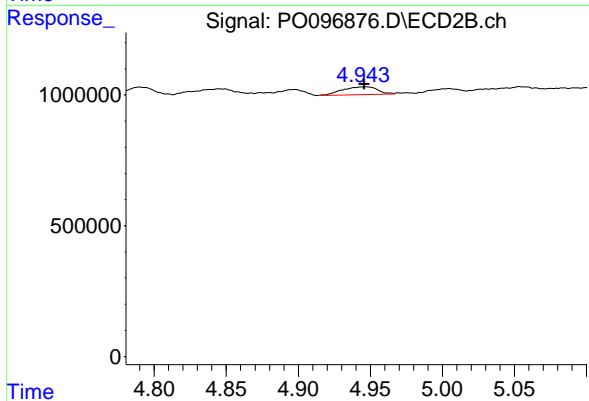
#21 AR-1248-1

R.T.: 4.678 min
 Delta R.T.: -0.030 min
 Response: 392491
 Conc: 13.99 ng/ml



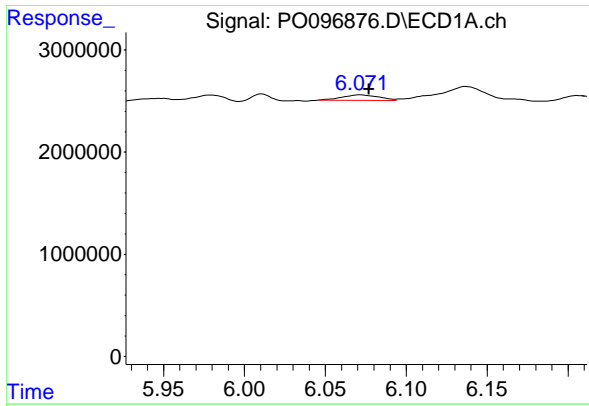
#22 AR-1248-2

R.T.: 5.887 min
 Delta R.T.: 0.017 min
 Response: 155028
 Conc: 1.65 ng/ml



#22 AR-1248-2

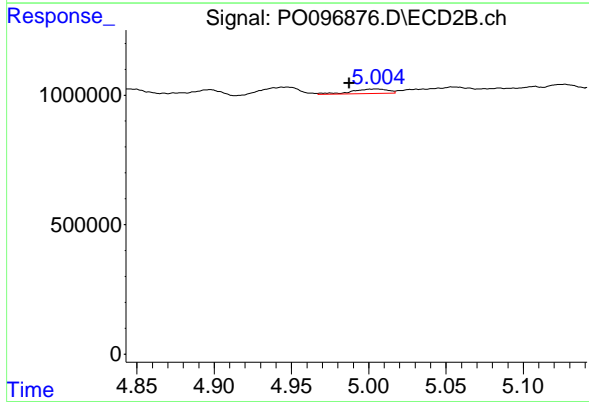
R.T.: 4.946 min
 Delta R.T.: 0.000 min
 Response: 508798
 Conc: 12.01 ng/ml



#23 AR-1248-3

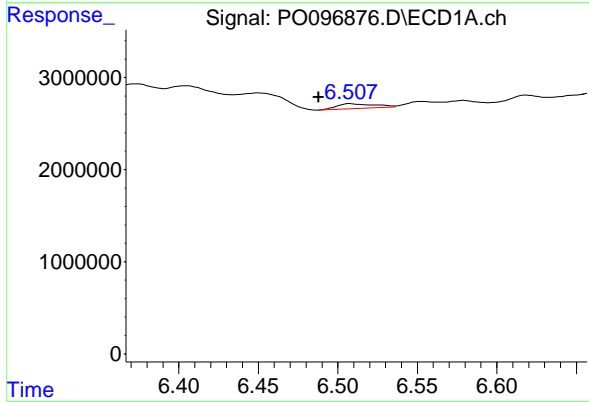
R.T.: 6.072 min
 Delta R.T.: -0.005 min
 Response: 854513
 Conc: 8.74 ng/ml

Instrument :
 ECD_O
 ClientSampleId :



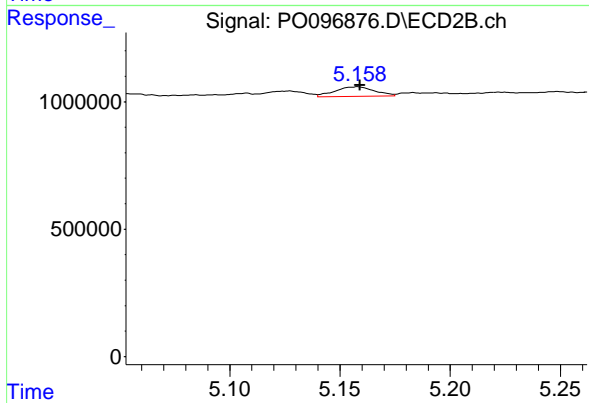
#23 AR-1248-3

R.T.: 5.005 min
 Delta R.T.: 0.017 min
 Response: 278543
 Conc: 6.35 ng/ml



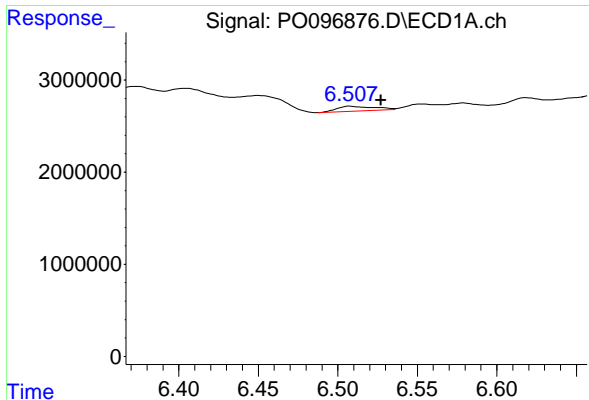
#24 AR-1248-4

R.T.: 6.508 min
 Delta R.T.: 0.020 min
 Response: 854716
 Conc: 9.41 ng/ml



#24 AR-1248-4

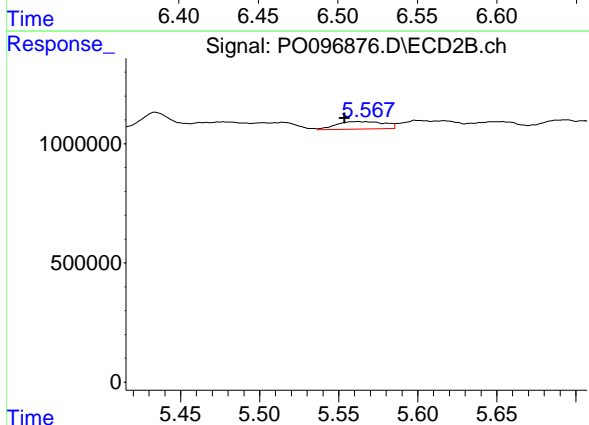
R.T.: 5.158 min
 Delta R.T.: -0.001 min
 Response: 467119
 Conc: 9.15 ng/ml



#25 AR-1248-5

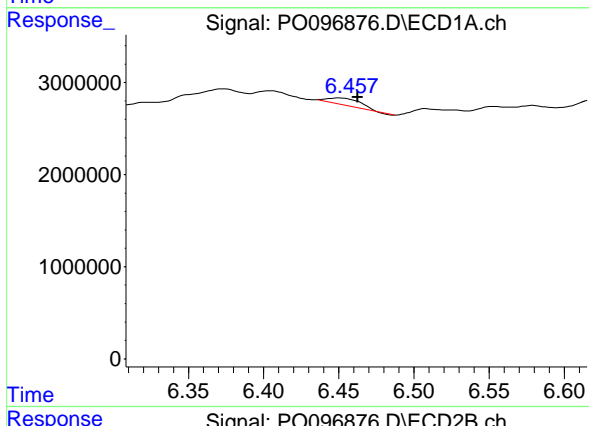
R.T.: 6.508 min
 Delta R.T.: -0.020 min
 Response: 854716
 Conc: 9.70 ng/ml

Instrument :
 ECD_O
 ClientSampleId :



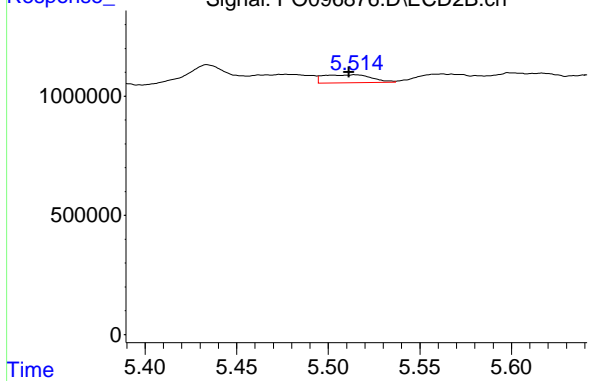
#25 AR-1248-5

R.T.: 5.562 min
 Delta R.T.: 0.008 min
 Response: 668324
 Conc: 14.30 ng/ml



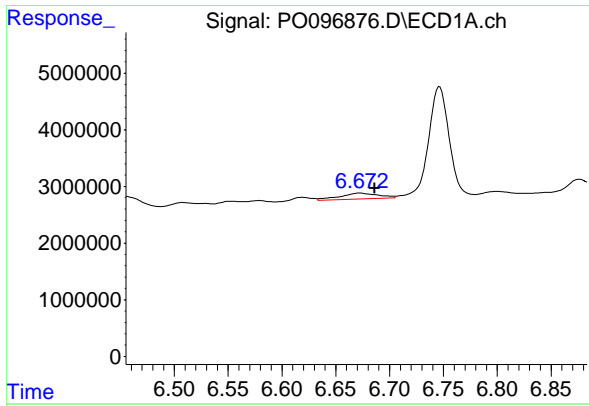
#26 AR-1254-1

R.T.: 6.450 min
 Delta R.T.: -0.013 min
 Response: 1115066
 Conc: 10.20 ng/ml



#26 AR-1254-1

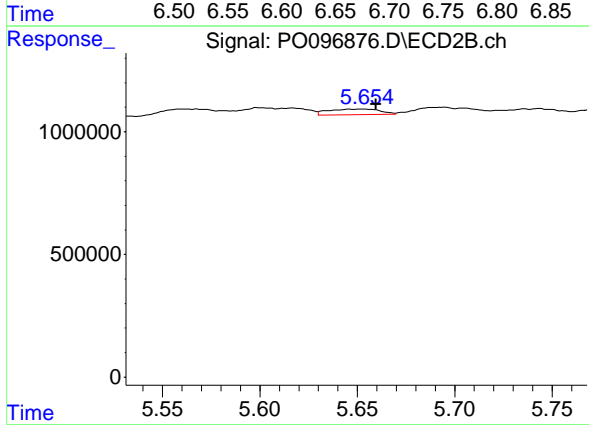
R.T.: 5.515 min
 Delta R.T.: 0.004 min
 Response: 612693
 Conc: 8.30 ng/ml



#27 AR-1254-2

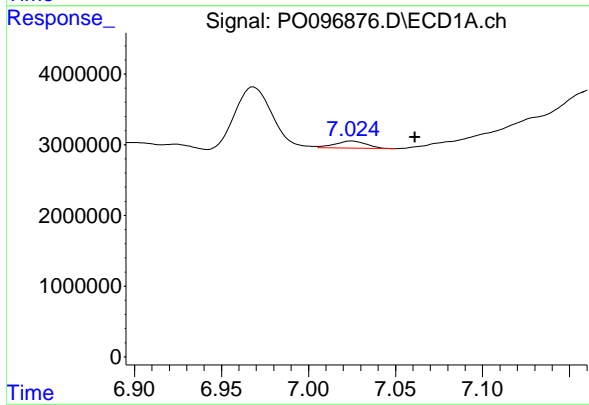
R.T.: 6.672 min
 Delta R.T.: -0.014 min
 Response: 2639189
 Conc: 16.37 ng/ml

Instrument :
 ECD_O
 ClientSampleId :



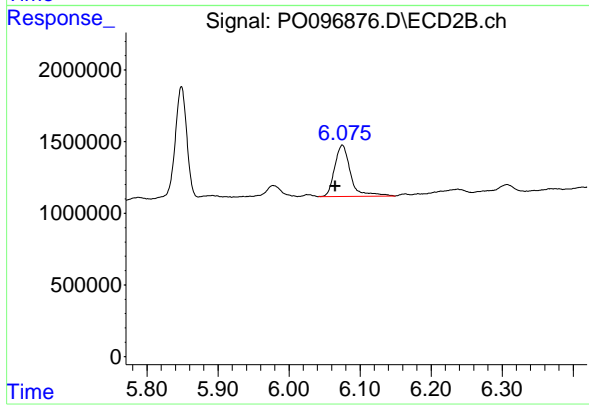
#27 AR-1254-2

R.T.: 5.653 min
 Delta R.T.: -0.007 min
 Response: 411231
 Conc: 6.24 ng/ml



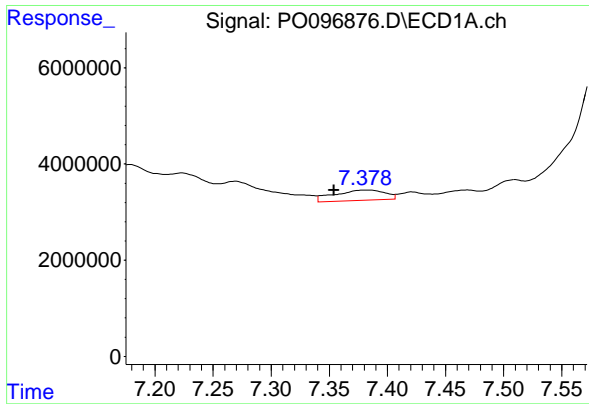
#28 AR-1254-3

R.T.: 7.025 min
 Delta R.T.: -0.036 min
 Response: 1232416
 Conc: 7.86 ng/ml



#28 AR-1254-3

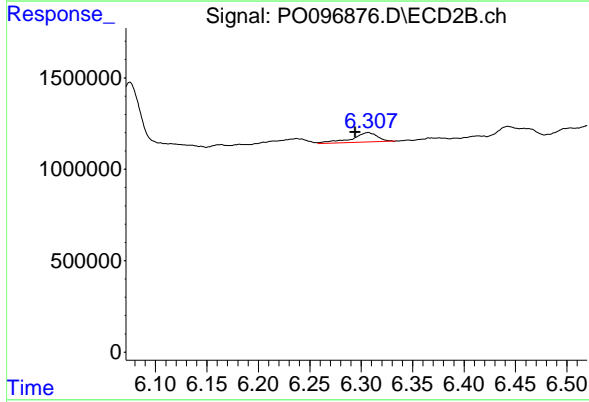
R.T.: 6.075 min
 Delta R.T.: 0.010 min
 Response: 5613571
 Conc: 55.55 ng/ml



#29 AR-1254-4

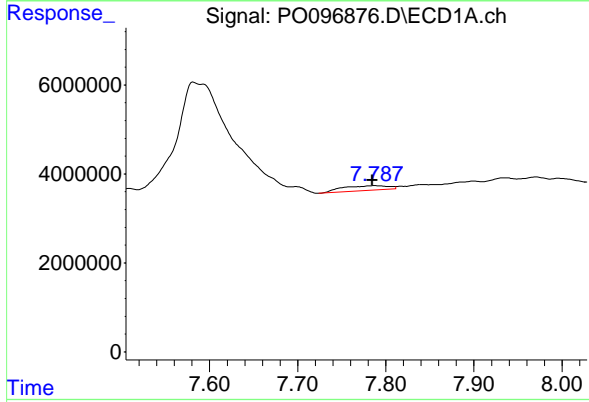
R.T.: 7.380 min
 Delta R.T.: 0.025 min
 Response: 6445837
 Conc: 63.94 ng/ml

Instrument :
 ECD_O
 ClientSampleId :



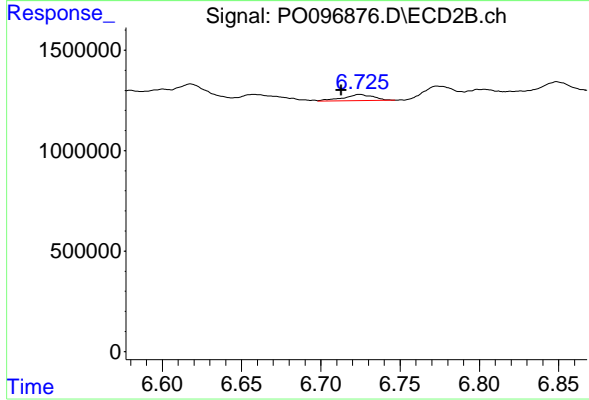
#29 AR-1254-4

R.T.: 6.307 min
 Delta R.T.: 0.012 min
 Response: 923747
 Conc: 15.96 ng/ml



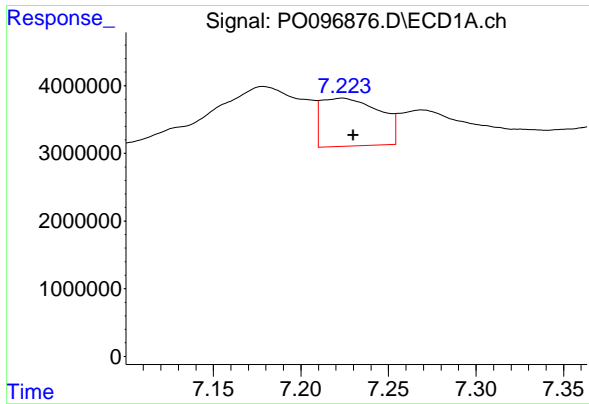
#30 AR-1254-5

R.T.: 7.788 min
 Delta R.T.: 0.003 min
 Response: 3874413
 Conc: 34.53 ng/ml



#30 AR-1254-5

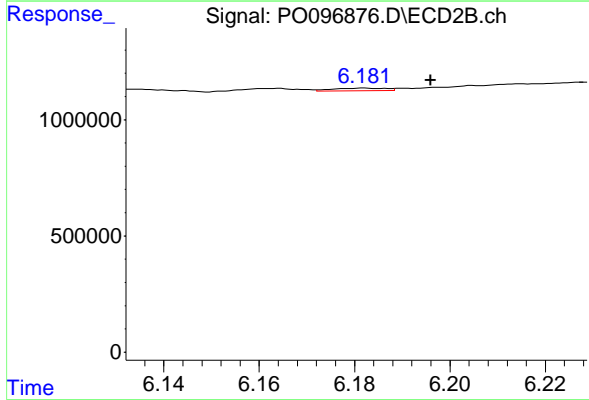
R.T.: 6.725 min
 Delta R.T.: 0.012 min
 Response: 408860
 Conc: 4.65 ng/ml



#31 AR-1260-1

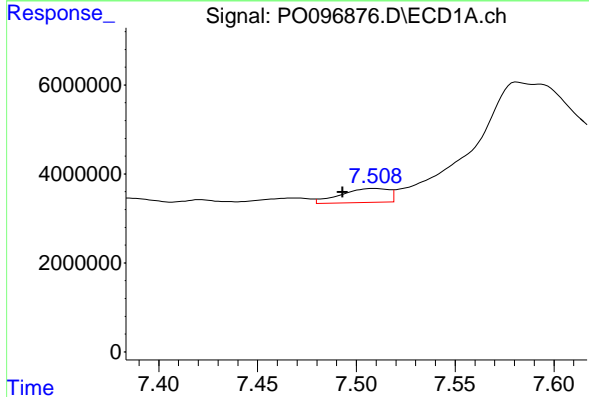
R.T.: 7.224 min
 Delta R.T.: -0.006 min
 Response: 16388322
 Conc: 130.39 ng/ml

Instrument :
 ECD_O
 ClientSampleId :



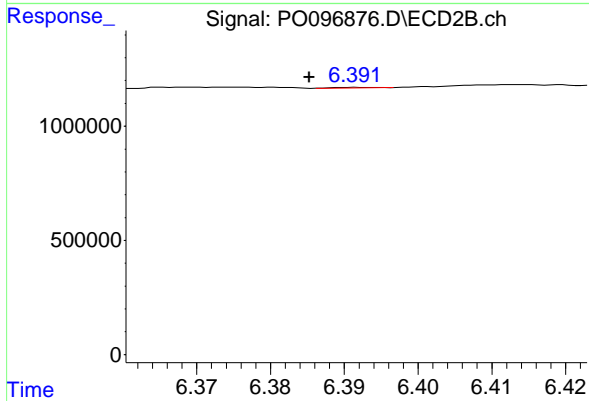
#31 AR-1260-1

R.T.: 6.182 min
 Delta R.T.: -0.014 min
 Response: 83594
 Conc: 1.19 ng/ml



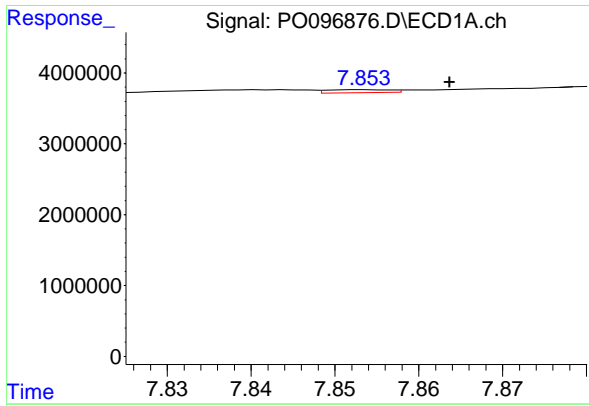
#32 AR-1260-2

R.T.: 7.510 min
 Delta R.T.: 0.016 min
 Response: 5233067
 Conc: 38.84 ng/ml



#32 AR-1260-2

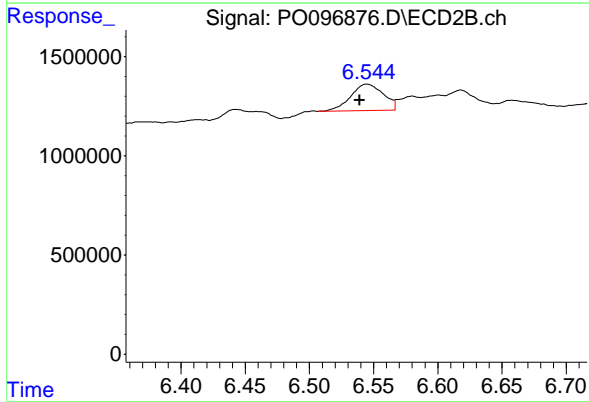
R.T.: 6.392 min
 Delta R.T.: 0.007 min
 Response: 9605
 Conc: 0.12 ng/ml



#33 AR-1260-3

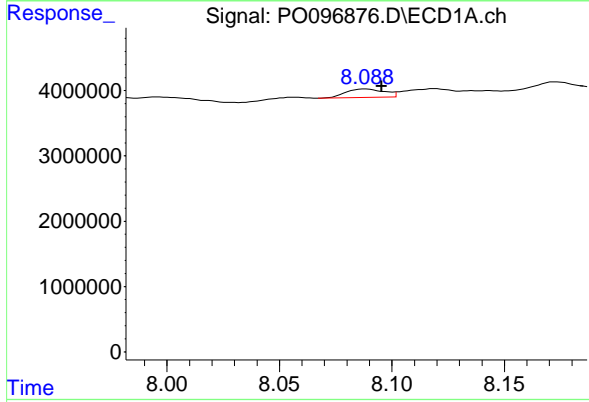
R.T.: 7.854 min
 Delta R.T.: -0.010 min
 Response: 226971
 Conc: 2.19 ng/ml

Instrument :
 ECD_O
 ClientSampleId :



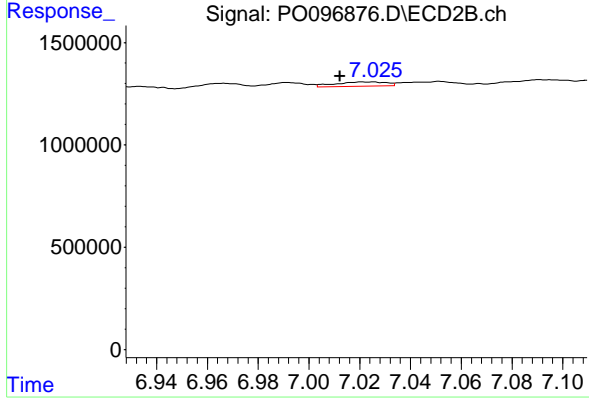
#33 AR-1260-3

R.T.: 6.545 min
 Delta R.T.: 0.006 min
 Response: 2340472
 Conc: 30.31 ng/ml



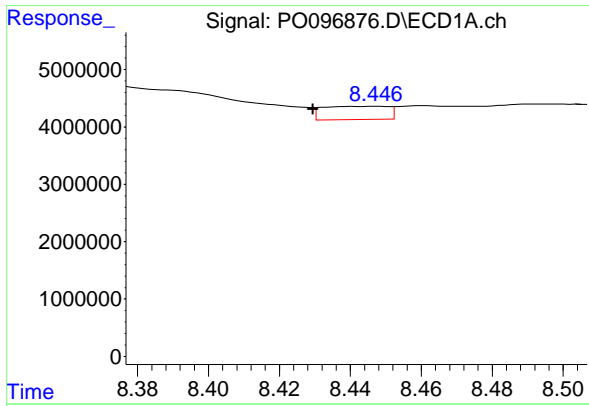
#34 AR-1260-4

R.T.: 8.088 min
 Delta R.T.: -0.007 min
 Response: 1538708
 Conc: 13.76 ng/ml



#34 AR-1260-4

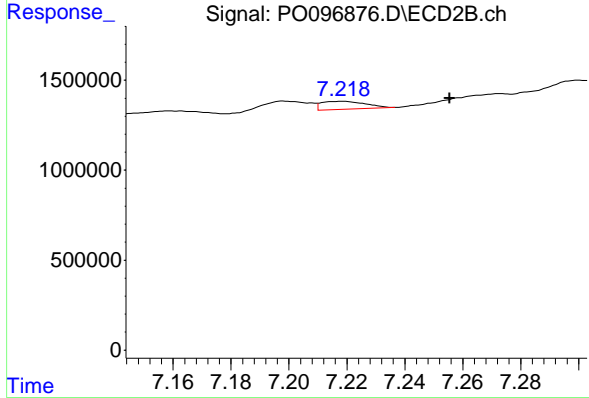
R.T.: 7.025 min
 Delta R.T.: 0.012 min
 Response: 295684
 Conc: 4.61 ng/ml



#35 AR-1260-5

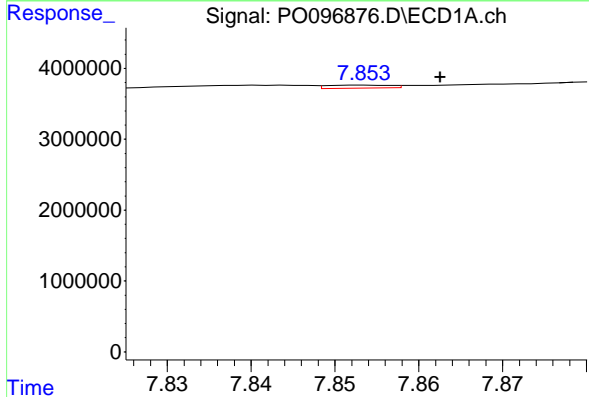
R.T.: 8.447 min
 Delta R.T.: 0.018 min
 Response: 2944394
 Conc: 14.02 ng/ml

Instrument :
 ECD_O
 ClientSampleId :



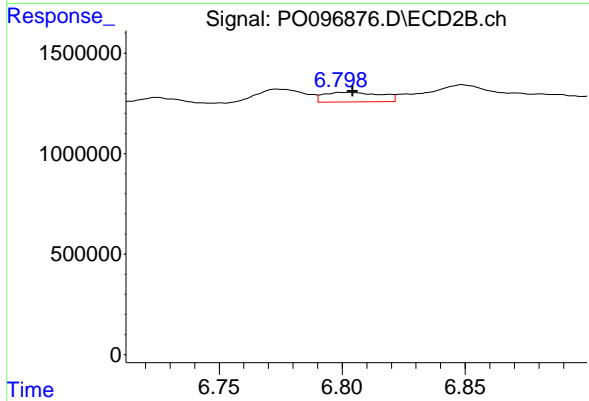
#35 AR-1260-5

R.T.: 7.218 min
 Delta R.T.: -0.037 min
 Response: 463417
 Conc: 3.34 ng/ml



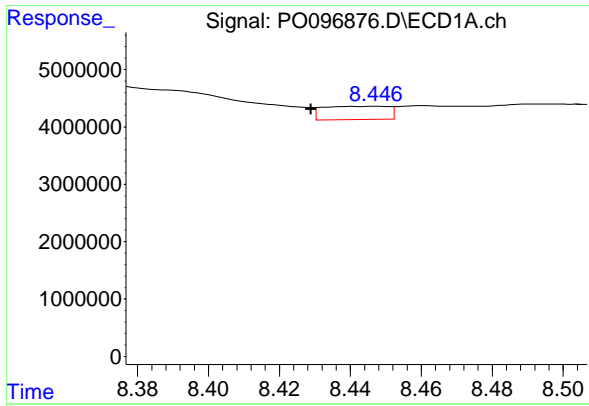
#36 AR-1262-1

R.T.: 7.854 min
 Delta R.T.: -0.009 min
 Response: 226971
 Conc: 1.53 ng/ml



#36 AR-1262-1

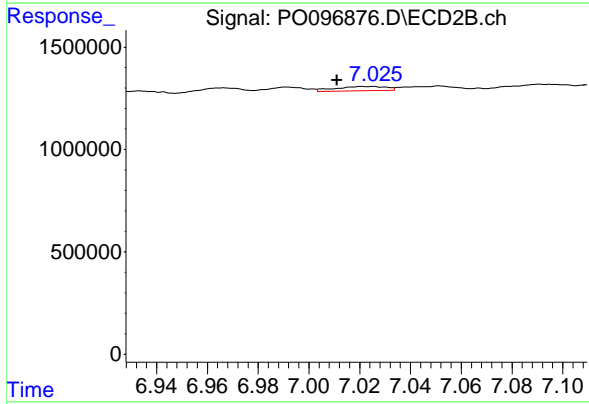
R.T.: 6.803 min
 Delta R.T.: -0.002 min
 Response: 760732
 Conc: 19.32 ng/ml



#37 AR-1262-2

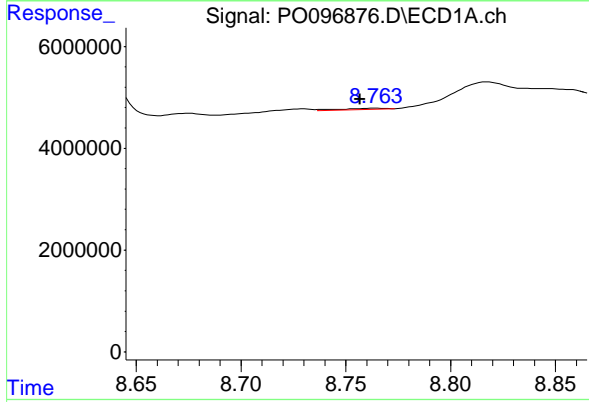
R.T.: 8.447 min
 Delta R.T.: 0.018 min
 Response: 2944394
 Conc: 12.72 ng/ml

Instrument :
 ECD_O
 ClientSampleId :



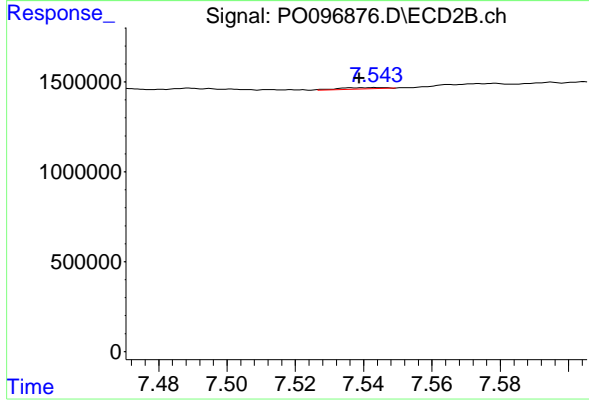
#37 AR-1262-2

R.T.: 7.025 min
 Delta R.T.: 0.013 min
 Response: 295684
 Conc: 3.65 ng/ml



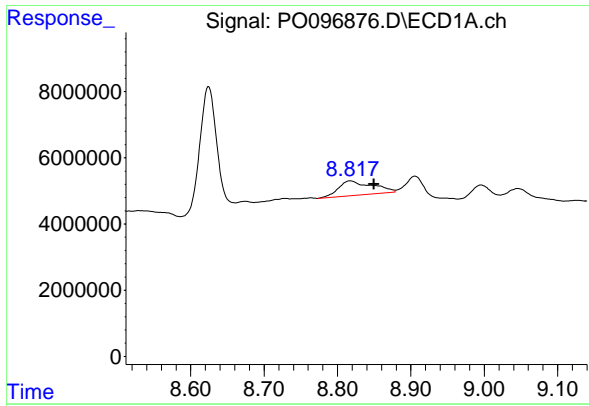
#38 AR-1262-3

R.T.: 8.764 min
 Delta R.T.: 0.007 min
 Response: 388566
 Conc: 2.33 ng/ml



#38 AR-1262-3

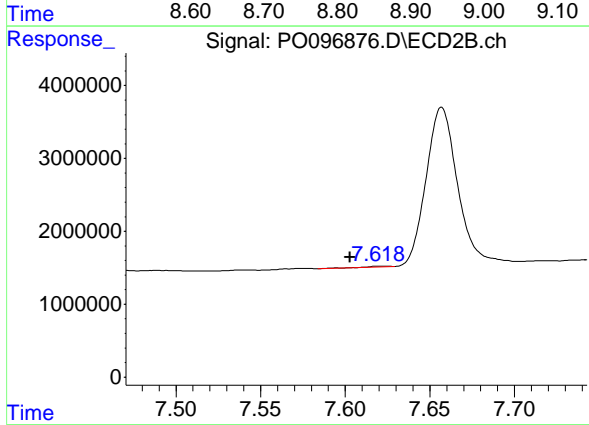
R.T.: 7.544 min
 Delta R.T.: 0.005 min
 Response: 69713
 Conc: 1.09 ng/ml



#39 AR-1262-4

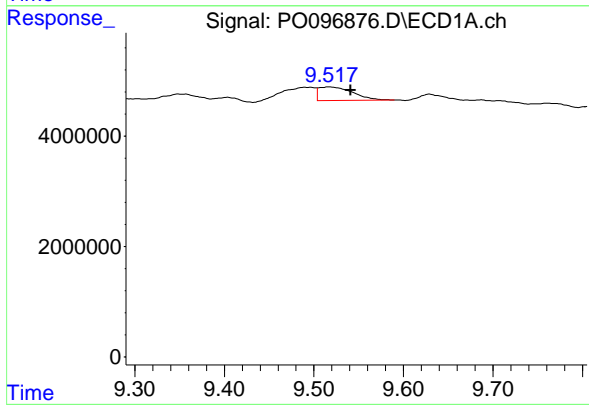
R.T.: 8.817 min
 Delta R.T.: -0.032 min
 Response: 13916197
 Conc: 190.88 ng/ml

Instrument :
 ECD_O
 ClientSampleId :



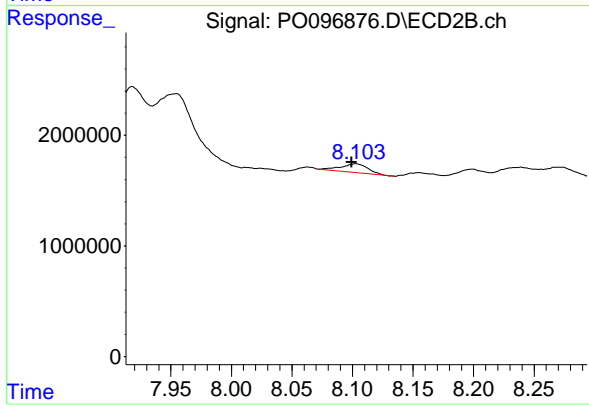
#39 AR-1262-4

R.T.: 7.619 min
 Delta R.T.: 0.016 min
 Response: 68786
 Conc: 0.61 ng/ml



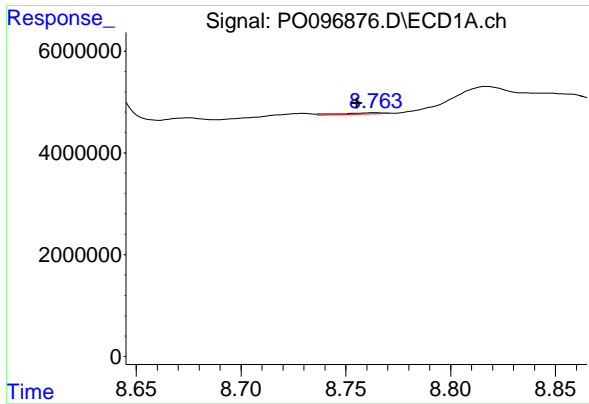
#40 AR-1262-5

R.T.: 9.517 min
 Delta R.T.: -0.024 min
 Response: 6462548
 Conc: 77.60 ng/ml



#40 AR-1262-5

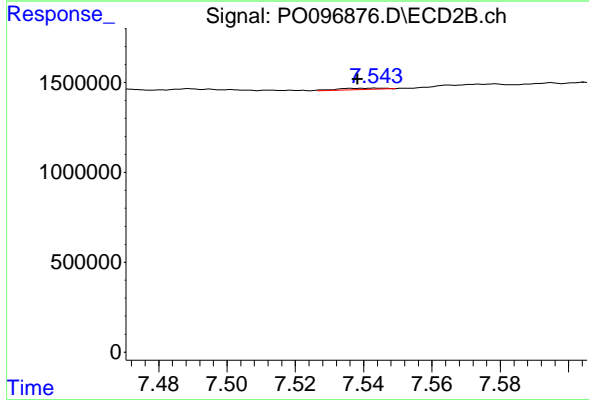
R.T.: 8.103 min
 Delta R.T.: 0.003 min
 Response: 1228621
 Conc: 23.39 ng/ml



#41 AR-1268-1

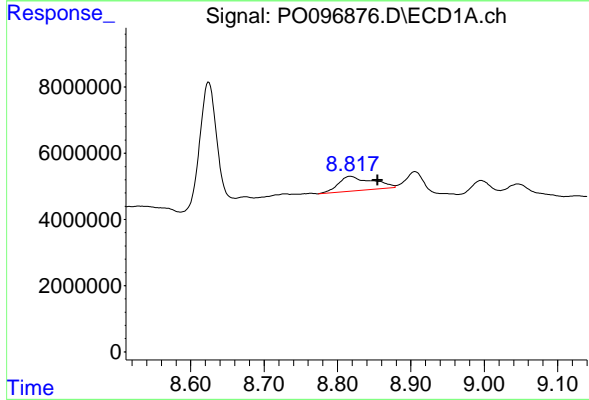
R.T.: 8.764 min
 Delta R.T.: 0.009 min
 Response: 388566
 Conc: 1.26 ng/ml

Instrument :
 ECD_O
 ClientSampleId :



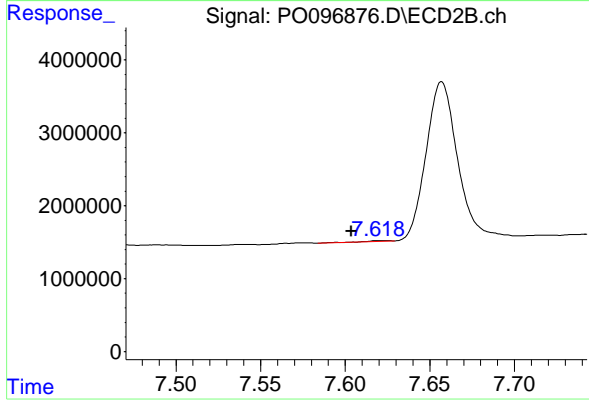
#41 AR-1268-1

R.T.: 7.544 min
 Delta R.T.: 0.005 min
 Response: 69713
 Conc: 0.38 ng/ml



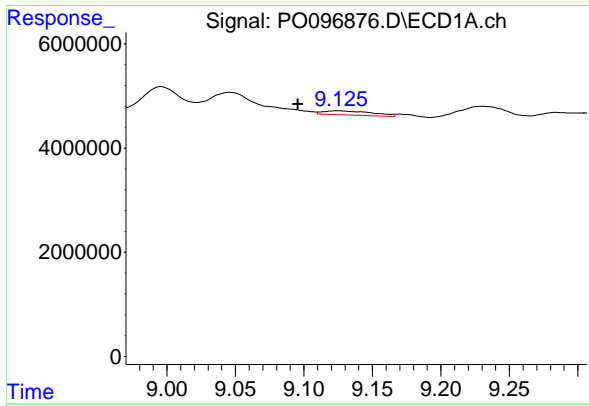
#42 AR-1268-2

R.T.: 8.817 min
 Delta R.T.: -0.037 min
 Response: 13916197
 Conc: 50.75 ng/ml



#42 AR-1268-2

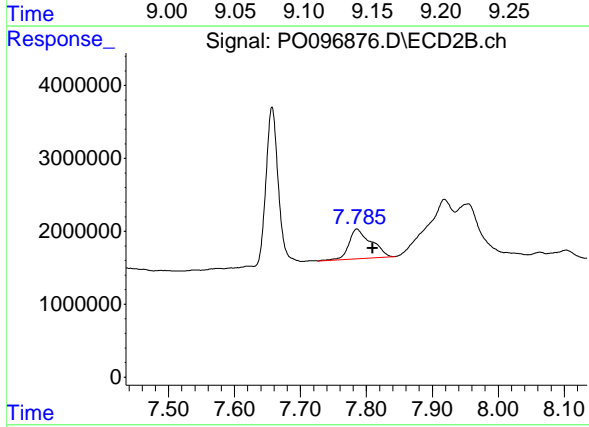
R.T.: 7.619 min
 Delta R.T.: 0.015 min
 Response: 68786
 Conc: 0.41 ng/ml



#43 AR-1268-3

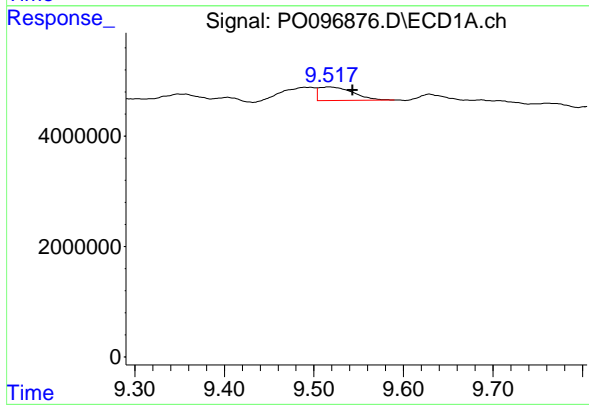
R.T.: 9.125 min
 Delta R.T.: 0.029 min
 Response: 1946085
 Conc: 7.62 ng/ml

Instrument :
 ECD_O
 ClientSampleId :



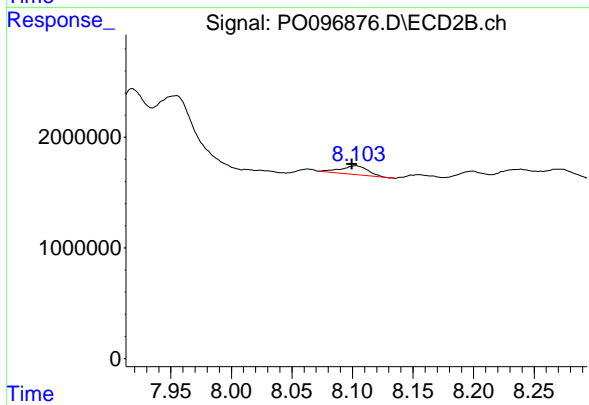
#43 AR-1268-3

R.T.: 7.785 min
 Delta R.T.: -0.024 min
 Response: 9521691
 Conc: 65.90 ng/ml



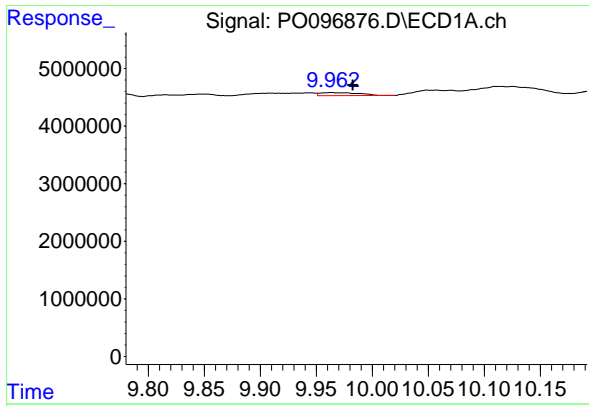
#44 AR-1268-4

R.T.: 9.517 min
 Delta R.T.: -0.026 min
 Response: 6462548
 Conc: 69.70 ng/ml



#44 AR-1268-4

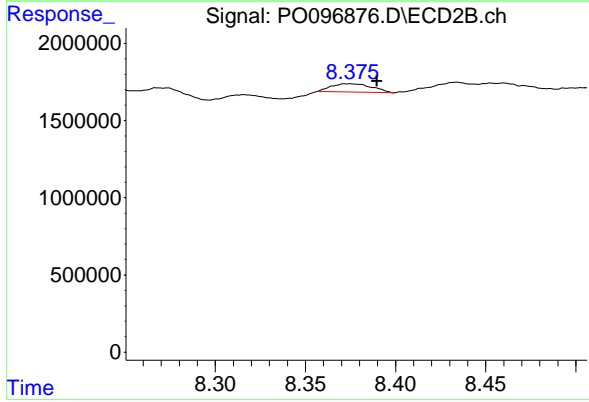
R.T.: 8.103 min
 Delta R.T.: 0.003 min
 Response: 1228621
 Conc: 20.62 ng/ml



#45 AR-1268-5

R.T.: 9.964 min
 Delta R.T.: -0.019 min
 Response: 1263302
 Conc: 1.56 ng/ml

Instrument :
 ECD_O
 ClientSampleId :



#45 AR-1268-5

R.T.: 8.374 min
 Delta R.T.: -0.016 min
 Response: 829687
 Conc: 1.99 ng/ml