

Data Path : Z:\pestpcbsrv\HPCHEM1\ECD_O\Data\P0080923\
 Data File : P0096898.D
 Signal(s) : Signal #1: ECD1A.ch Signal #2: ECD2B.ch
 Acq On : 10 Aug 2023 08:31
 Operator : YP/AJ
 Sample : AR1242CCC500
 Misc :
 ALS Vial : 4 Sample Multiplier: 1

Instrument :
 ECD_O
 ClientSampleId :

Integration File signal 1: autoint1.e
 Integration File signal 2: autoint2.e
 Quant Time: Aug 10 09:16:09 2023
 Quant Method : Z:\pestpcbsrv\HPCHEM1\ECD_O\methods\P0080723.M
 Quant Title : GC EXTRACTABLES
 QLast Update : Tue Aug 08 04:34:41 2023
 Response via : Initial Calibration
 Integrator: ChemStation

Volume Inj. : 2 µl
 Signal #1 Phase : ZB-MR2 Signal #2 Phase: ZB-MR2
 Signal #1 Info : 30Mx0.32mmx 0.50µ Signal #2 Info : 30M x 0.32mm x 0.25µm

Compound	RT#1	RT#2	Resp#1	Resp#2	ng/ml	ng/ml

System Monitoring Compounds						
1) SA Tetrachlo...	4.411	3.618	168.5E6	67382563	50.900	50.901
2) SA Decachlor...	10.352	8.639	110.6E6	54693694	50.524	47.275
Target Compounds						
3) L1 AR-1016-1	5.596	4.704	41144379	19336393	436.853	436.133
4) L1 AR-1016-2	5.618	4.723	58888168	26824943	440.205	438.526
5) L1 AR-1016-3	5.682	4.899	36542643	14659724	419.928	448.743
6) L1 AR-1016-4	5.783	4.942	28552420	12224043	425.075	427.618
7) L1 AR-1016-5	6.084	5.155	30442053	16674902	436.026	433.718
8) L2 AR-1221-1	4.617	3.831	5682784	2255981	139.437	129.975
9) L2 AR-1221-2	4.710	3.917	8342419	3261781	274.604	252.446
10) L2 AR-1221-3	4.786	3.993	27348695	11607571	312.444	292.426
11) L3 AR-1232-1	4.786	3.993	27348695	11607571	374.981	358.844
12) L3 AR-1232-2	5.324	4.723	36503435	26824943	920.736	929.725
13) L3 AR-1232-3	5.618	4.899	58888168	14659724	962.655	966.881
14) L3 AR-1232-4	5.783	4.983	28552420	15580698	935.721	1042.560
15) L3 AR-1232-5	5.876	5.155	26611745	16674902	950.991	1020.073
16) L4 AR-1242-1	5.596	4.704	41144379	19336393	490.884	490.461
17) L4 AR-1242-2	5.618	4.723	58888168	26824943	500.062	492.283
18) L4 AR-1242-3	5.682	4.899	36542643	14659724	494.672	495.787
19) L4 AR-1242-4	5.783	4.983	28552420	15580698	479.628	494.407
20) L4 AR-1242-5	6.536	5.508	26967914	18423751	490.150	505.644
21) L5 AR-1248-1	5.596	4.704	41144379	19336393	702.194	689.047
22) L5 AR-1248-2	5.876	4.942	26611745	12224043	283.051	288.432
23) L5 AR-1248-3	6.084	4.983	30442053	15580698	311.240	355.196
24) L5 AR-1248-4	6.497	5.155	26577224	16674902	292.561	326.639
25) L5 AR-1248-5	6.536	5.549	26967914	15710414	306.154	336.038
26) L6 AR-1254-1	6.468	5.508	20177897	18423751	184.626	249.657 #
27) L6 AR-1254-2	6.698	5.656	24320547	5553119	150.846	84.291 #
28) L6 AR-1254-3	7.071	6.061	10417340	6167233	66.481	61.024
29) L6 AR-1254-4	7.365	6.290	7641653	4285158	75.796	74.042
30) L6 AR-1254-5	7.795	6.710	2033958	1606769	18.126	18.276
31) L7 AR-1260-1	7.239	6.205	439867	2041334	3.500	29.009 #
32) L7 AR-1260-2	7.504	6.380	2285891	747792	16.966	8.960 #
33) L7 AR-1260-3	7.861	6.532	315869	819318	3.044	10.610 #
34) L7 AR-1260-4	8.092	7.010	891829	45561	7.977	0.711 #
35) L7 AR-1260-5	8.441	7.255	1312413	82642	6.250	0.596 #
36) L8 AR-1262-1	7.861	6.821	315869	187999	2.127	4.775 #
37) L8 AR-1262-2	8.441	7.010	1312413	45561	5.670	0.562 #
38) L8 AR-1262-3	8.781	7.601f	669953	356283	4.017	5.552 #
39) L8 AR-1262-4	8.858	7.601	62336	356283	0.855	3.136 #
40) L8 AR-1262-5	9.540	8.169f	461903	10368	5.547	0.197 #
41) L9 AR-1268-1	8.781	7.601f	669953	356283	2.179	1.923

Data Path : Z:\pestpcbsrv\HPCHEM1\ECD_O\Data\P0080923\
 Data File : P0096898.D
 Signal(s) : Signal #1: ECD1A.ch Signal #2: ECD2B.ch
 Acq On : 10 Aug 2023 08:31
 Operator : YP/AJ
 Sample : AR1242CCC500
 Misc :
 ALS Vial : 4 Sample Multiplier: 1

Instrument :
 ECD_O
 ClientSampleId :

Integration File signal 1: autoint1.e
 Integration File signal 2: autoint2.e
 Quant Time: Aug 10 09:16:09 2023
 Quant Method : Z:\pestpcbsrv\HPCHEM1\ECD_O\methods\P0080723.M
 Quant Title : GC EXTRACTABLES
 QLast Update : Tue Aug 08 04:34:41 2023
 Response via : Initial Calibration
 Integrator: ChemStation

Volume Inj. : 2 µl
 Signal #1 Phase : ZB-MR1 Signal #2 Phase: ZB-MR2
 Signal #1 Info : 30Mx0.32mmx 0.50µ Signal #2 Info : 30M x 0.32mm x 0.25µm

	Compound	RT#1	RT#2	Resp#1	Resp#2	ng/ml	ng/ml
42)	L9 AR-1268-2	8.858	7.601	62336	356283	0.227	2.125 #
43)	L9 AR-1268-3	9.086	7.807	134564	-15415	0.527	N.D. #
44)	L9 AR-1268-4	9.540	8.169f	461903	10368	4.982	0.174 #
45)	L9 AR-1268-5	9.994	8.387	1094422	431971	1.355	1.039

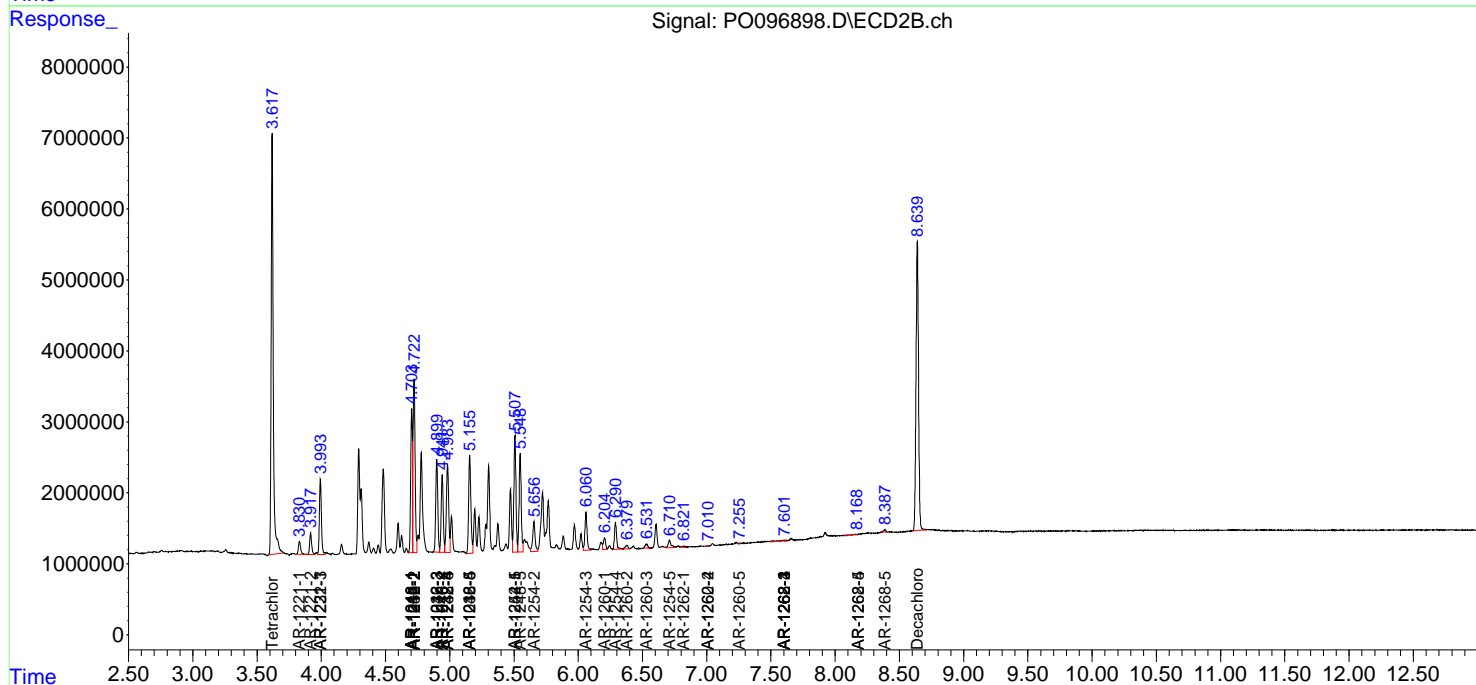
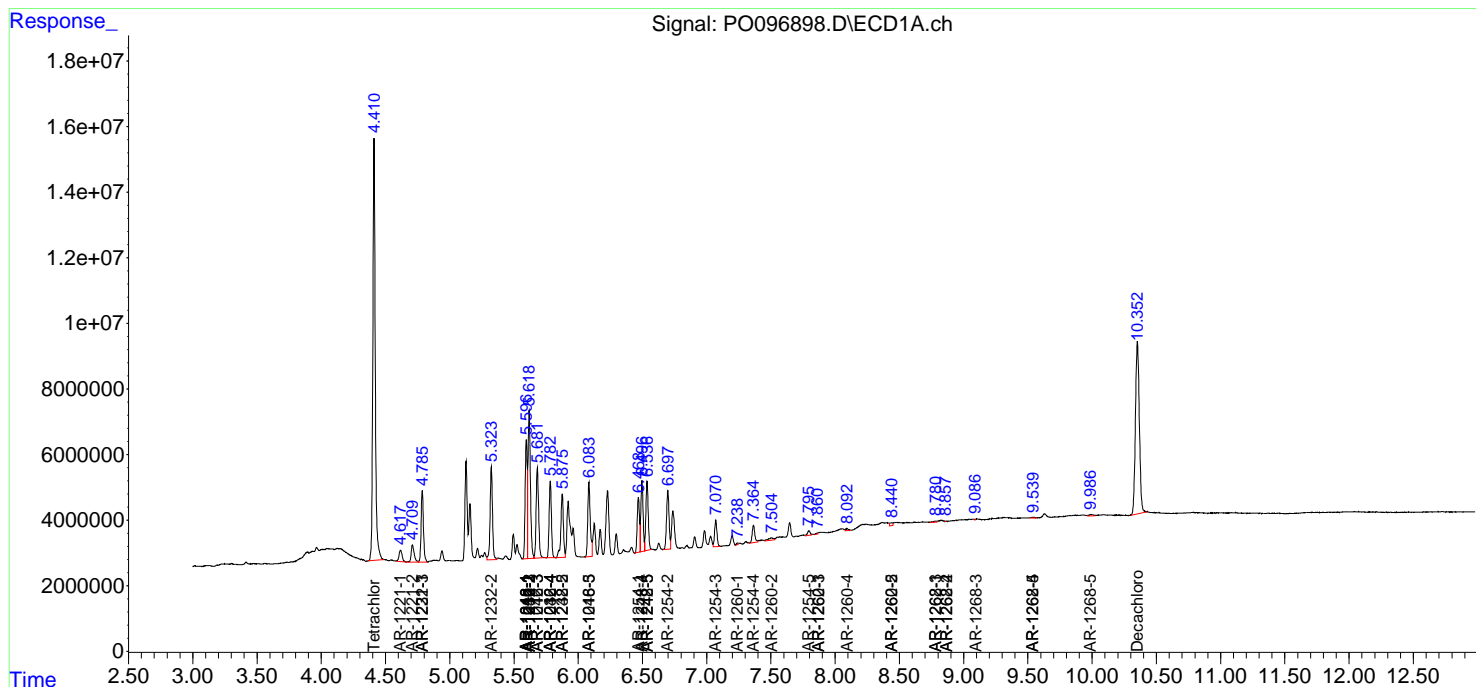
(f)=RT Delta > 1/2 Window (#)=Amounts differ by > 25% (m)=manual int.

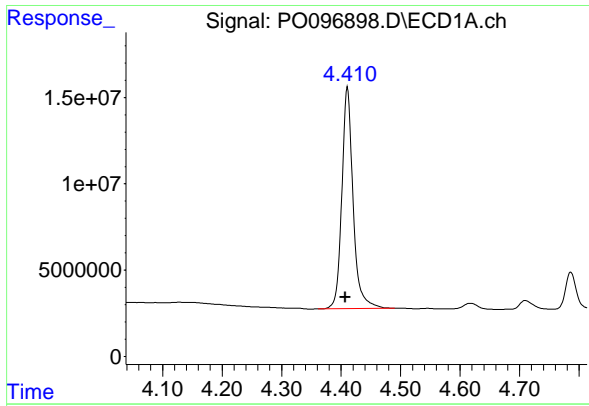
Data Path : Z:\pestpcbsrv\HPCHEM1\ECD_O\Data\PO080923\
 Data File : PO096898.D
 Signal(s) : Signal #1: ECD1A.ch Signal #2: ECD2B.ch
 Acq On : 10 Aug 2023 08:31
 Operator : YP/AJ
 Sample : AR1242CCC500
 Misc :
 ALS Vial : 4 Sample Multiplier: 1

Instrument :
 ECD_O
 ClientSampleId :

Integration File signal 1: autoint1.e
 Integration File signal 2: autoint2.e
 Quant Time: Aug 10 09:16:09 2023
 Quant Method : Z:\pestpcbsrv\HPCHEM1\ECD_O\methods\PO080723.M
 Quant Title : GC EXTRACTABLES
 QLast Update : Tue Aug 08 04:34:41 2023
 Response via : Initial Calibration
 Integrator: ChemStation

Volume Inj. : 2 µl
 Signal #1 Phase : ZB-MR1 Signal #2 Phase: ZB-MR2
 Signal #1 Info : 30Mx0.32mmx 0.50µm Signal #2 Info : 30M x 0.32mm x 0.25µm

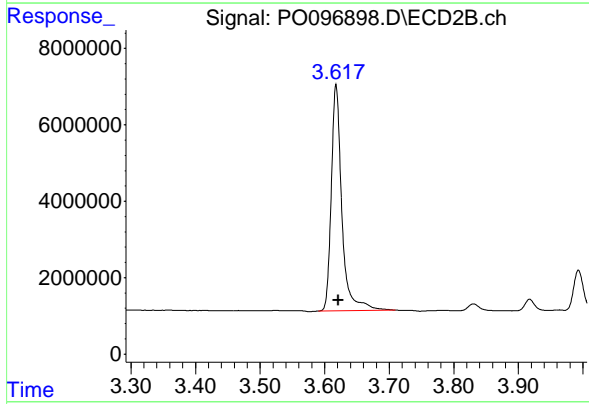




#1 Tetrachloro-m-xylene

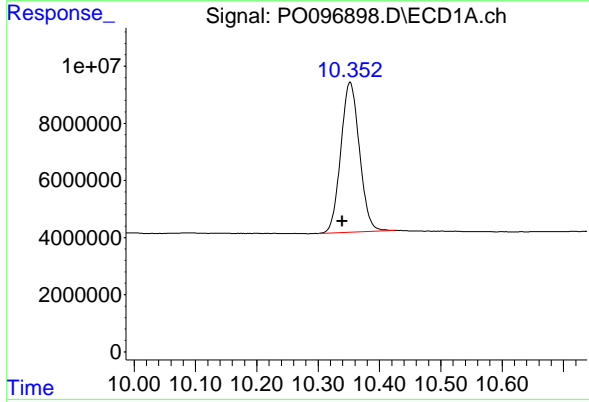
R.T.: 4.411 min
 Delta R.T.: 0.004 min
 Response: 168488976
 Conc: 50.90 ng/ml

Instrument :
 ECD_O
 ClientSampleId :



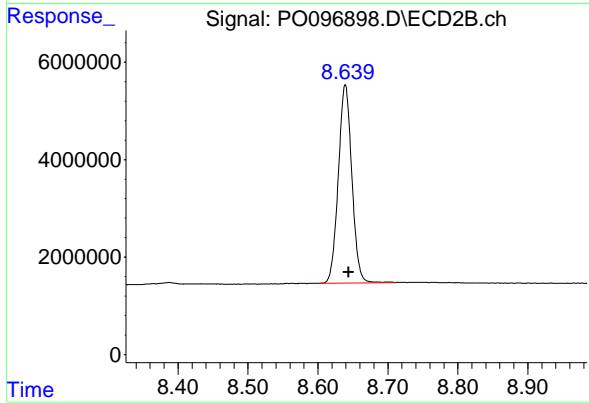
#1 Tetrachloro-m-xylene

R.T.: 3.618 min
 Delta R.T.: -0.003 min
 Response: 67382563
 Conc: 50.90 ng/ml



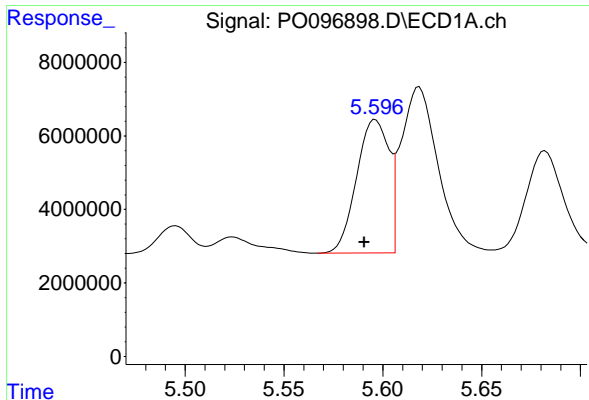
#2 Decachlorobiphenyl

R.T.: 10.352 min
 Delta R.T.: 0.013 min
 Response: 110555140
 Conc: 50.52 ng/ml



#2 Decachlorobiphenyl

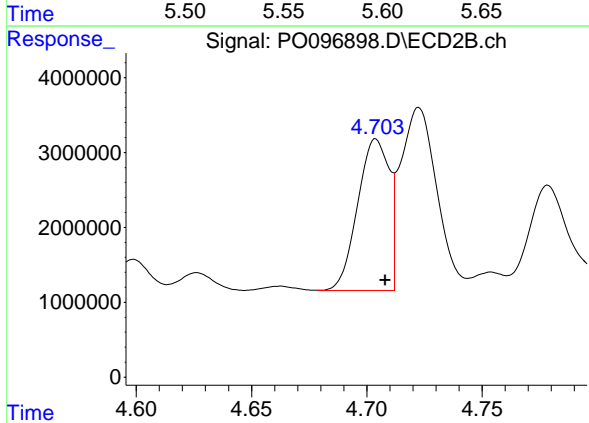
R.T.: 8.639 min
 Delta R.T.: -0.005 min
 Response: 54693694
 Conc: 47.27 ng/ml



#3 AR-1016-1

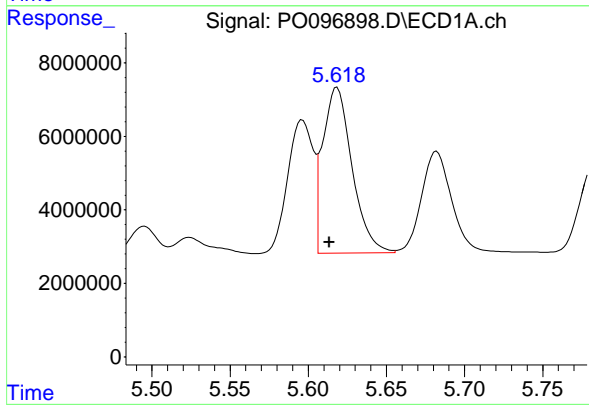
R.T.: 5.596 min
 Delta R.T.: 0.006 min
 Response: 41144379
 Conc: 436.85 ng/ml

Instrument :
 ECD_O
 ClientSampleId :



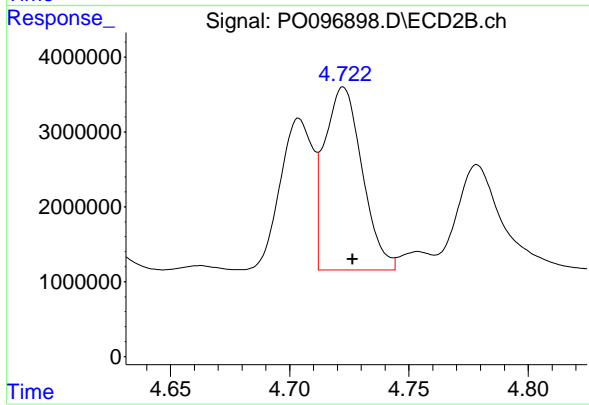
#3 AR-1016-1

R.T.: 4.704 min
 Delta R.T.: -0.004 min
 Response: 19336393
 Conc: 436.13 ng/ml



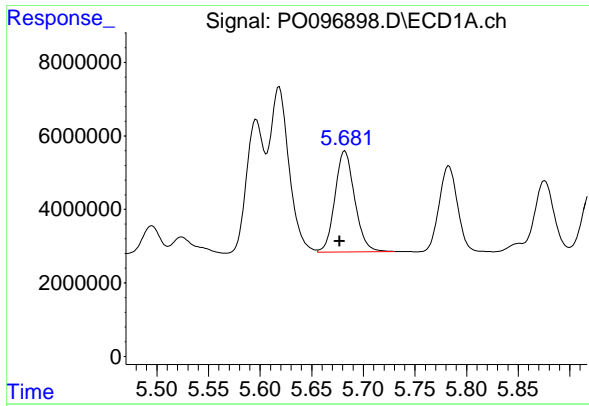
#4 AR-1016-2

R.T.: 5.618 min
 Delta R.T.: 0.005 min
 Response: 58888168
 Conc: 440.21 ng/ml



#4 AR-1016-2

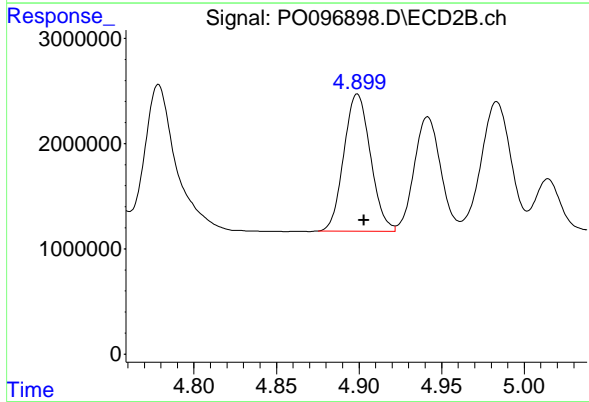
R.T.: 4.723 min
 Delta R.T.: -0.004 min
 Response: 26824943
 Conc: 438.53 ng/ml



#5 AR-1016-3

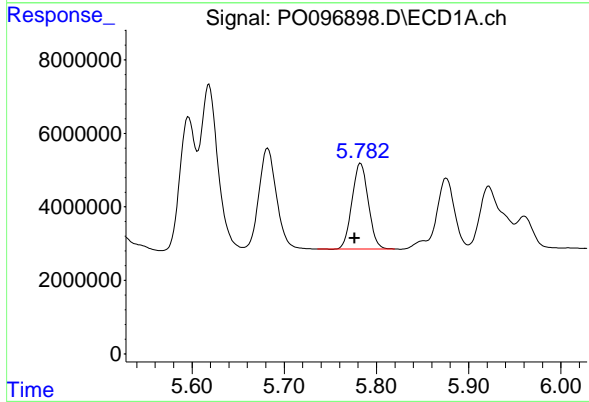
R.T.: 5.682 min
 Delta R.T.: 0.005 min
 Response: 36542643
 Conc: 419.93 ng/ml

Instrument :
 ECD_O
 ClientSampleId :



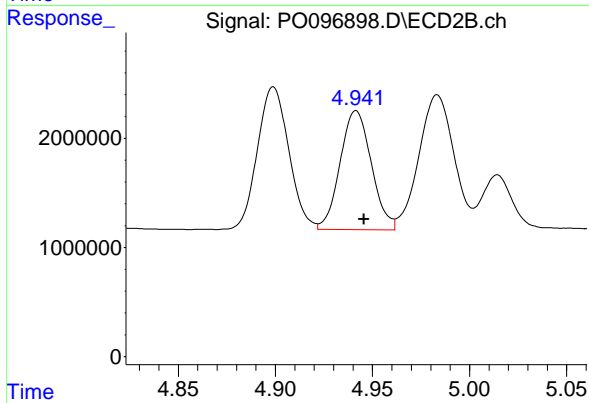
#5 AR-1016-3

R.T.: 4.899 min
 Delta R.T.: -0.004 min
 Response: 14659724
 Conc: 448.74 ng/ml



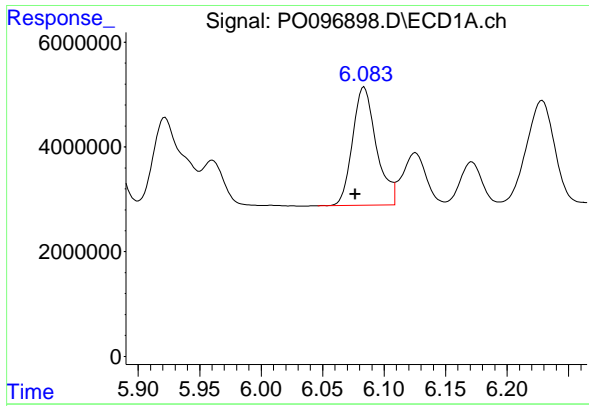
#6 AR-1016-4

R.T.: 5.783 min
 Delta R.T.: 0.006 min
 Response: 28552420
 Conc: 425.07 ng/ml



#6 AR-1016-4

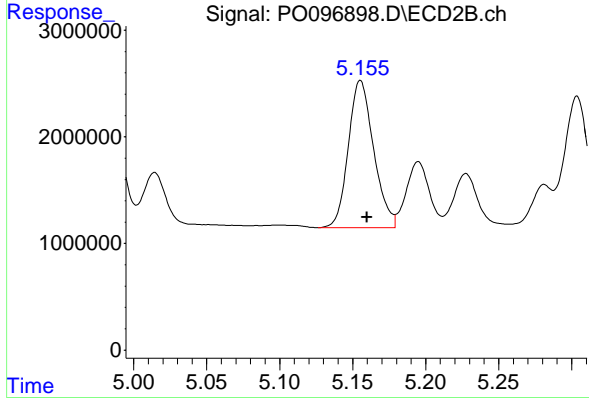
R.T.: 4.942 min
 Delta R.T.: -0.004 min
 Response: 12224043
 Conc: 427.62 ng/ml



#7 AR-1016-5

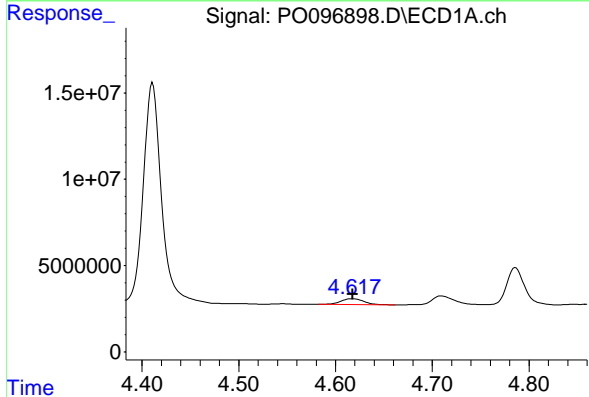
R.T.: 6.084 min
 Delta R.T.: 0.007 min
 Response: 30442053
 Conc: 436.03 ng/ml

Instrument :
 ECD_O
 ClientSampleId :



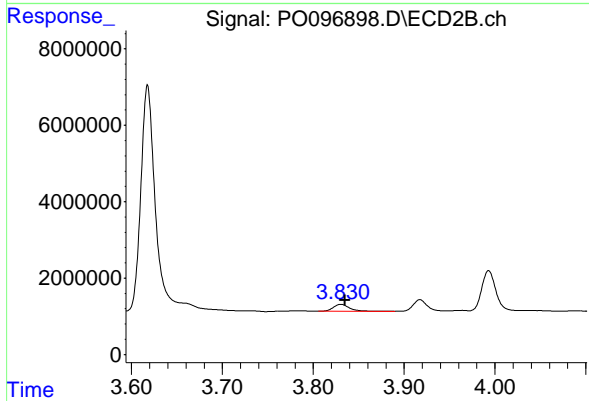
#7 AR-1016-5

R.T.: 5.155 min
 Delta R.T.: -0.004 min
 Response: 16674902
 Conc: 433.72 ng/ml



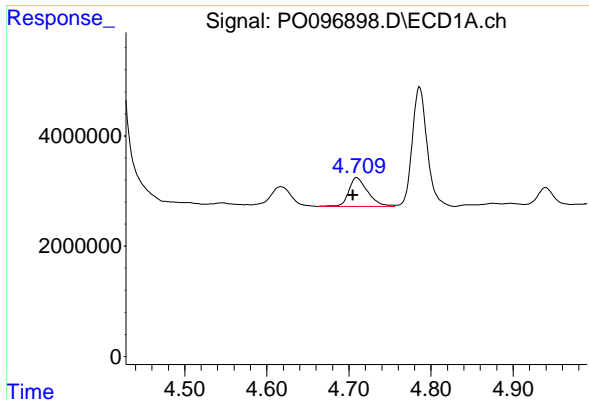
#8 AR-1221-1

R.T.: 4.617 min
 Delta R.T.: 0.000 min
 Response: 5682784
 Conc: 139.44 ng/ml



#8 AR-1221-1

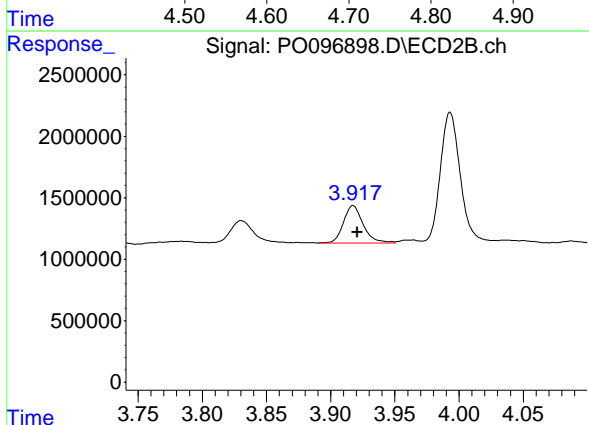
R.T.: 3.831 min
 Delta R.T.: -0.004 min
 Response: 2255981
 Conc: 129.97 ng/ml



#9 AR-1221-2

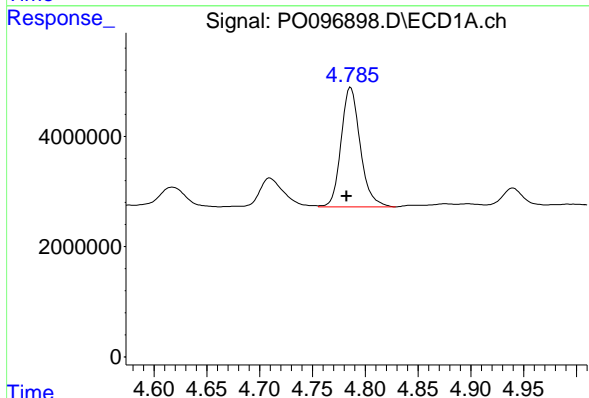
R.T.: 4.710 min
Delta R.T.: 0.005 min
Response: 8342419
Conc: 274.60 ng/ml

Instrument :
ECD_O
ClientSampleId :



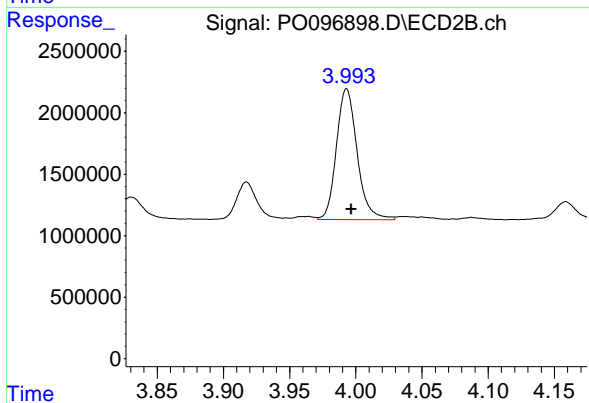
#9 AR-1221-2

R.T.: 3.917 min
Delta R.T.: -0.003 min
Response: 3261781
Conc: 252.45 ng/ml



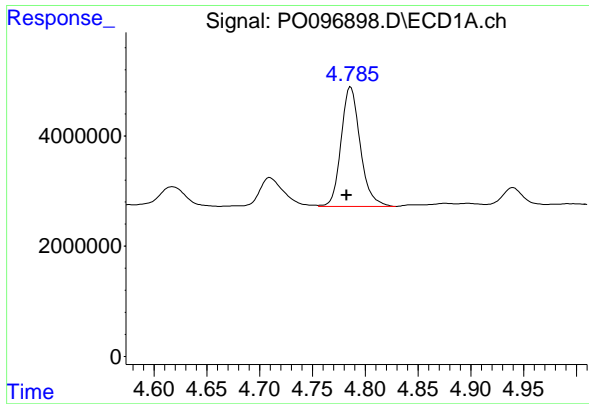
#10 AR-1221-3

R.T.: 4.786 min
Delta R.T.: 0.004 min
Response: 27348695
Conc: 312.44 ng/ml



#10 AR-1221-3

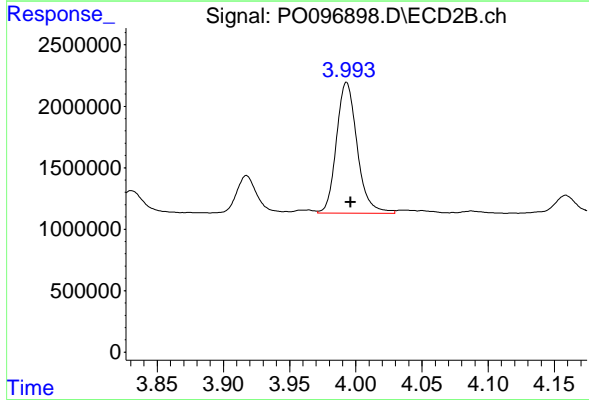
R.T.: 3.993 min
Delta R.T.: -0.004 min
Response: 11607571
Conc: 292.43 ng/ml



#11 AR-1232-1

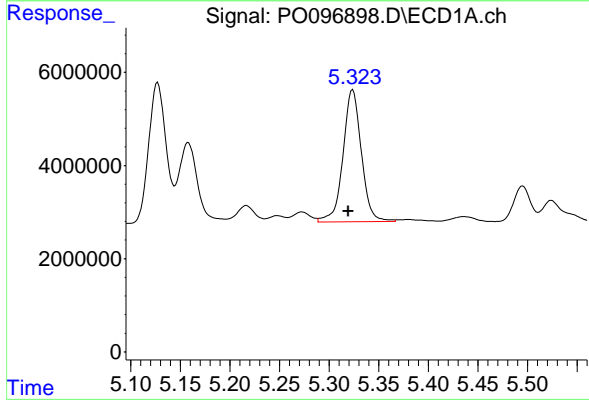
R.T.: 4.786 min
 Delta R.T.: 0.004 min
 Response: 27348695
 Conc: 374.98 ng/ml

Instrument :
 ECD_O
 ClientSampleId :



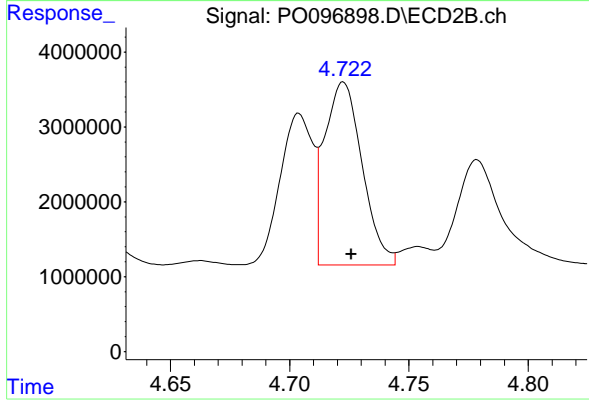
#11 AR-1232-1

R.T.: 3.993 min
 Delta R.T.: -0.003 min
 Response: 11607571
 Conc: 358.84 ng/ml



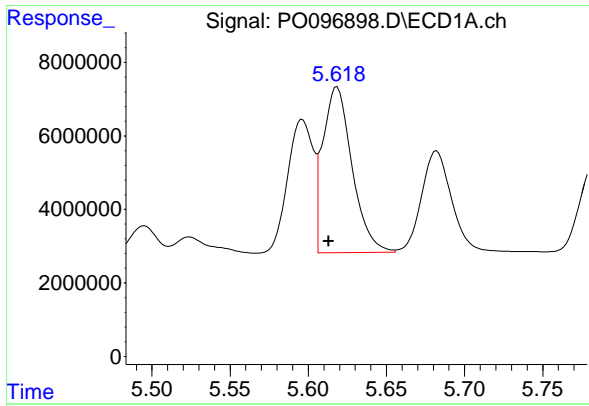
#12 AR-1232-2

R.T.: 5.324 min
 Delta R.T.: 0.005 min
 Response: 36503435
 Conc: 920.74 ng/ml



#12 AR-1232-2

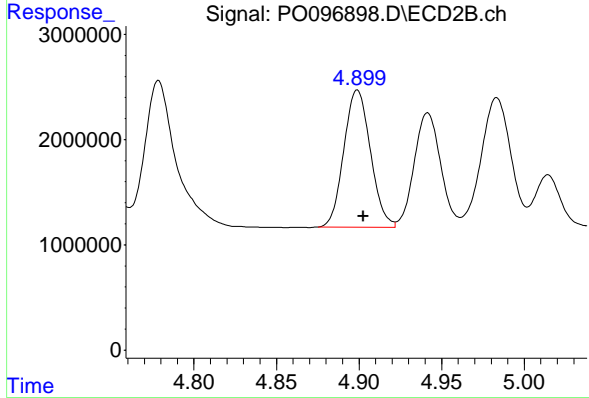
R.T.: 4.723 min
 Delta R.T.: -0.003 min
 Response: 26824943
 Conc: 929.73 ng/ml



#13 AR-1232-3

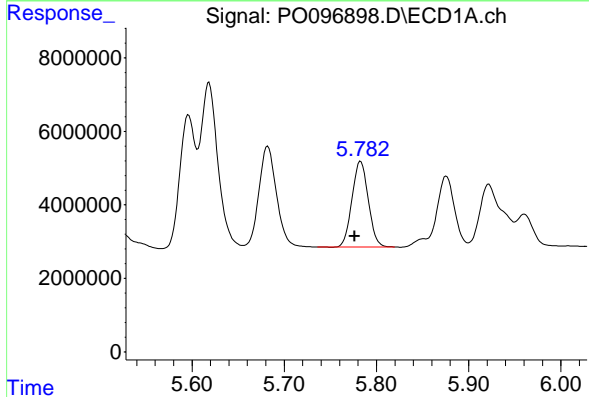
R.T.: 5.618 min
 Delta R.T.: 0.005 min
 Response: 58888168
 Conc: 962.66 ng/ml

Instrument :
 ECD_O
 ClientSampleId :



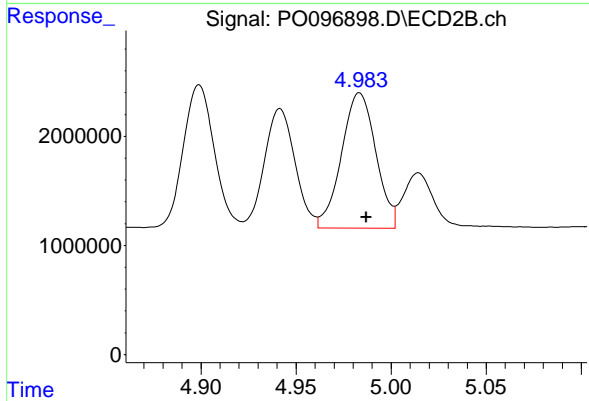
#13 AR-1232-3

R.T.: 4.899 min
 Delta R.T.: -0.003 min
 Response: 14659724
 Conc: 966.88 ng/ml



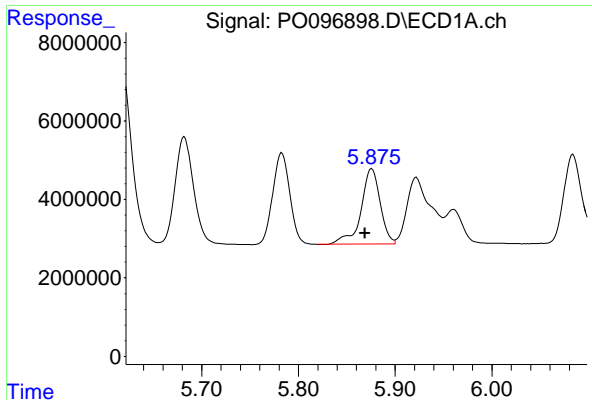
#14 AR-1232-4

R.T.: 5.783 min
 Delta R.T.: 0.006 min
 Response: 28552420
 Conc: 935.72 ng/ml



#14 AR-1232-4

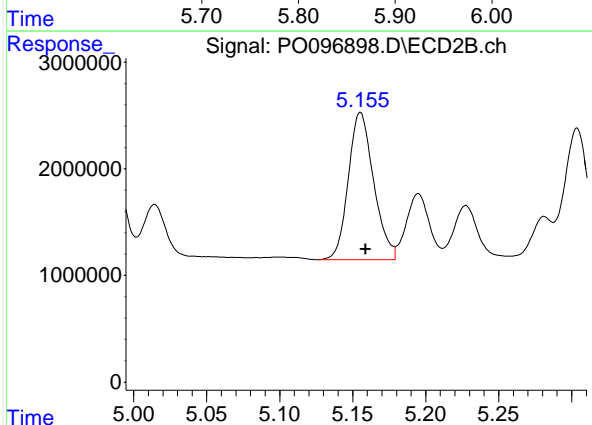
R.T.: 4.983 min
 Delta R.T.: -0.004 min
 Response: 15580698
 Conc: 1042.56 ng/ml



#15 AR-1232-5

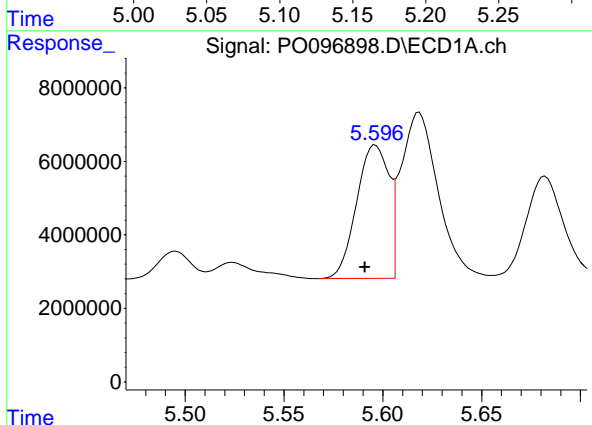
R.T.: 5.876 min
 Delta R.T.: 0.007 min
 Response: 26611745
 Conc: 950.99 ng/ml

Instrument :
 ECD_O
 ClientSampleId :



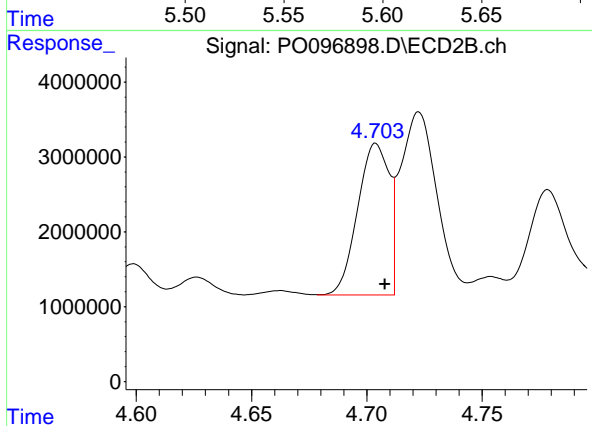
#15 AR-1232-5

R.T.: 5.155 min
 Delta R.T.: -0.004 min
 Response: 16674902
 Conc: 1020.07 ng/ml



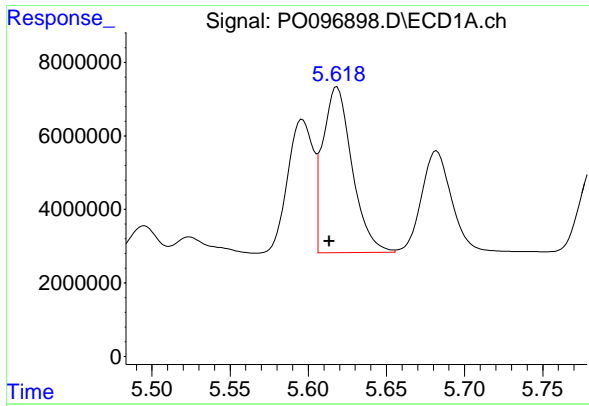
#16 AR-1242-1

R.T.: 5.596 min
 Delta R.T.: 0.005 min
 Response: 41144379
 Conc: 490.88 ng/ml



#16 AR-1242-1

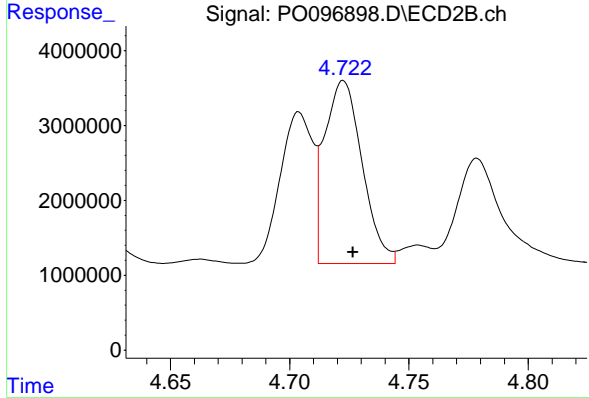
R.T.: 4.704 min
 Delta R.T.: -0.004 min
 Response: 19336393
 Conc: 490.46 ng/ml



#17 AR-1242-2

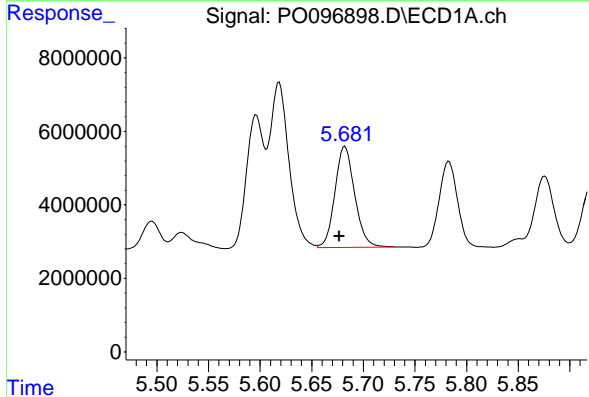
R.T.: 5.618 min
 Delta R.T.: 0.005 min
 Response: 58888168
 Conc: 500.06 ng/ml

Instrument :
 ECD_O
 ClientSampleId :



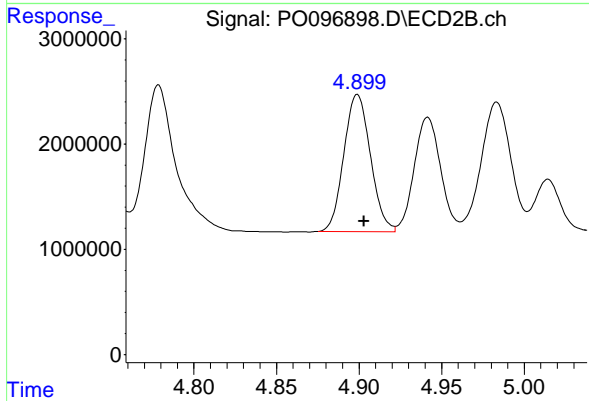
#17 AR-1242-2

R.T.: 4.723 min
 Delta R.T.: -0.004 min
 Response: 26824943
 Conc: 492.28 ng/ml



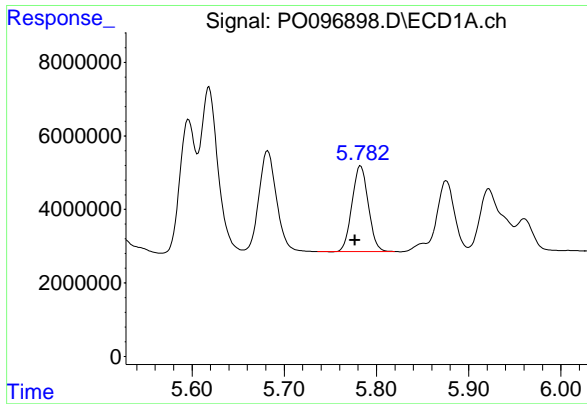
#18 AR-1242-3

R.T.: 5.682 min
 Delta R.T.: 0.005 min
 Response: 36542643
 Conc: 494.67 ng/ml



#18 AR-1242-3

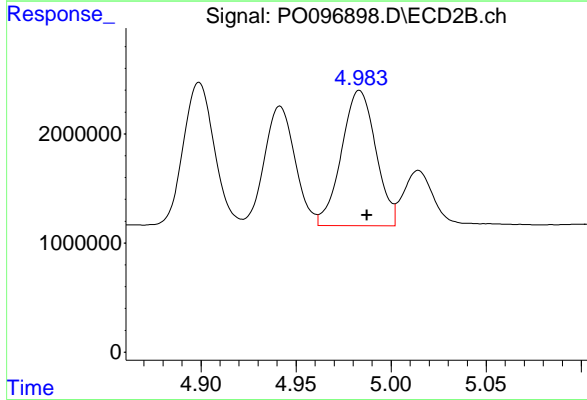
R.T.: 4.899 min
 Delta R.T.: -0.004 min
 Response: 14659724
 Conc: 495.79 ng/ml



#19 AR-1242-4

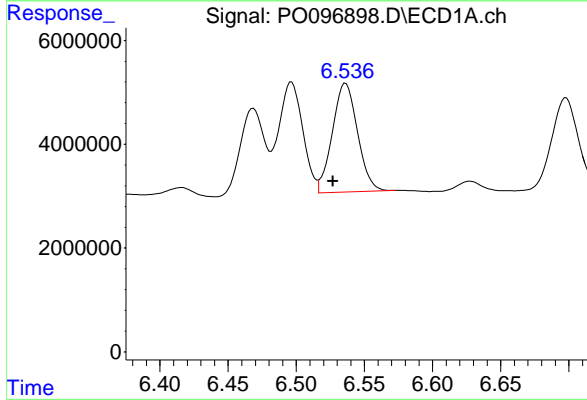
R.T.: 5.783 min
 Delta R.T.: 0.006 min
 Response: 28552420
 Conc: 479.63 ng/ml

Instrument :
 ECD_O
 ClientSampleId :



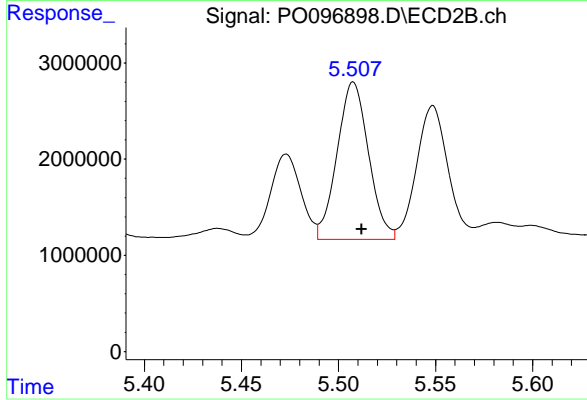
#19 AR-1242-4

R.T.: 4.983 min
 Delta R.T.: -0.004 min
 Response: 15580698
 Conc: 494.41 ng/ml



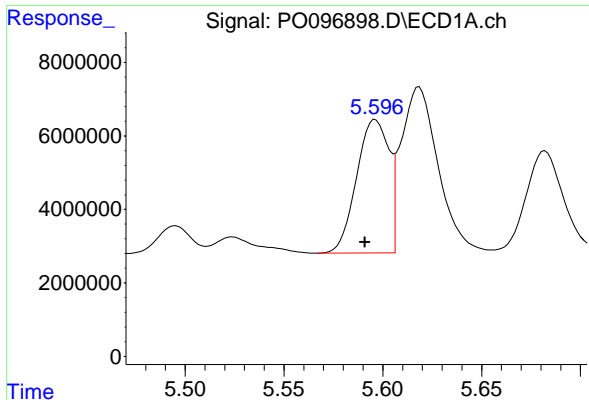
#20 AR-1242-5

R.T.: 6.536 min
 Delta R.T.: 0.009 min
 Response: 26967914
 Conc: 490.15 ng/ml



#20 AR-1242-5

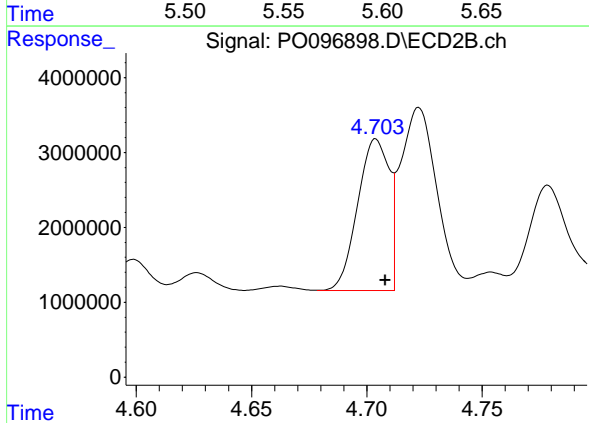
R.T.: 5.508 min
 Delta R.T.: -0.004 min
 Response: 18423751
 Conc: 505.64 ng/ml



#21 AR-1248-1

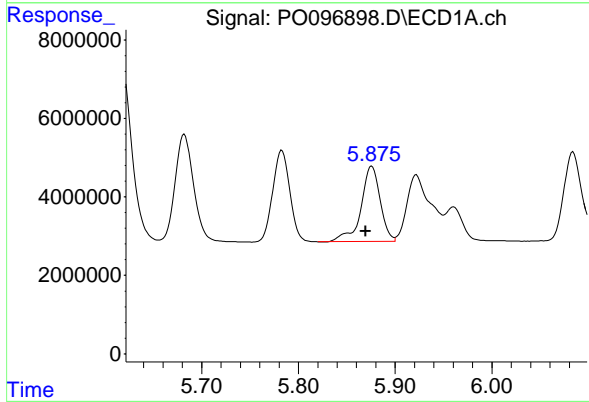
R.T.: 5.596 min
 Delta R.T.: 0.005 min
 Response: 41144379
 Conc: 702.19 ng/ml

Instrument :
 ECD_O
 ClientSampleId :



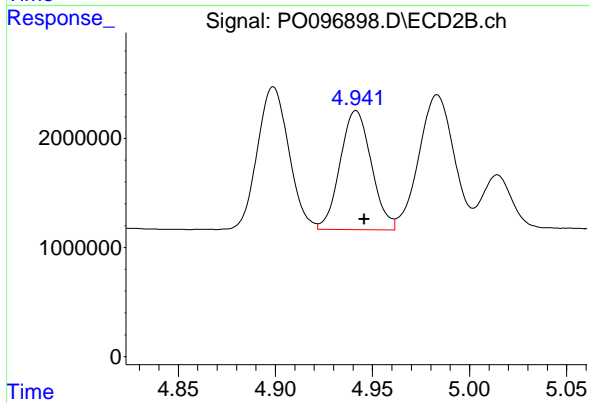
#21 AR-1248-1

R.T.: 4.704 min
 Delta R.T.: -0.004 min
 Response: 19336393
 Conc: 689.05 ng/ml



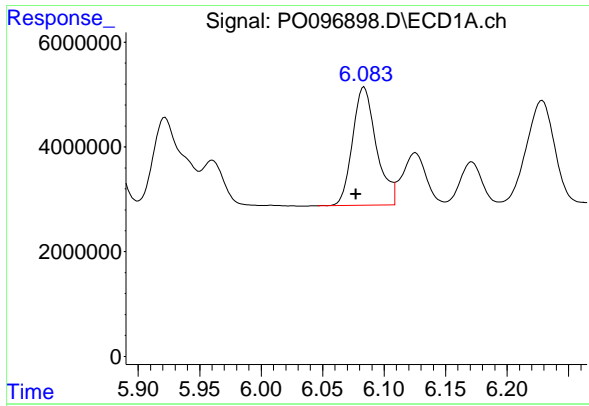
#22 AR-1248-2

R.T.: 5.876 min
 Delta R.T.: 0.006 min
 Response: 26611745
 Conc: 283.05 ng/ml



#22 AR-1248-2

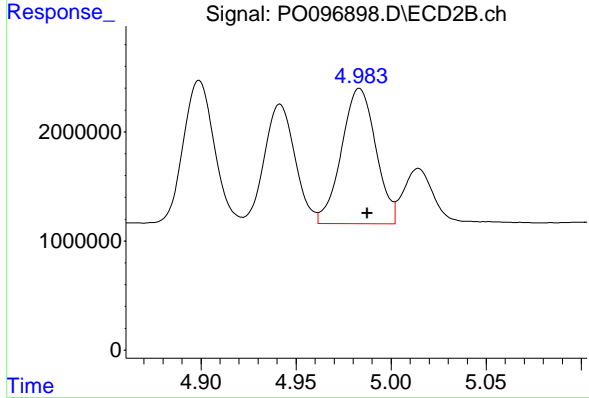
R.T.: 4.942 min
 Delta R.T.: -0.004 min
 Response: 12224043
 Conc: 288.43 ng/ml



#23 AR-1248-3

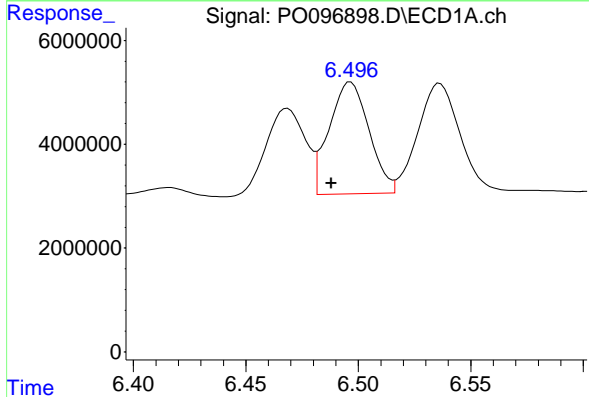
R.T.: 6.084 min
 Delta R.T.: 0.007 min
 Response: 30442053
 Conc: 311.24 ng/ml

Instrument :
 ECD_O
 ClientSampleId :



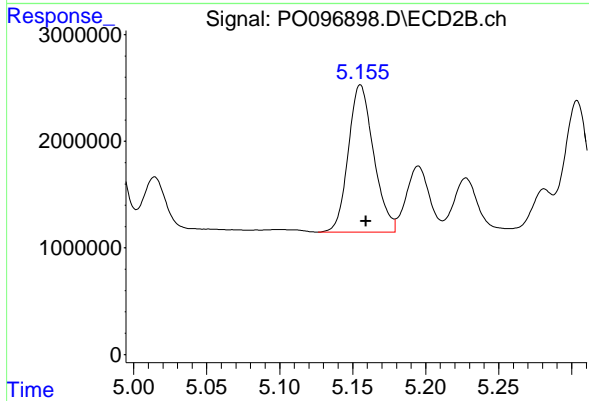
#23 AR-1248-3

R.T.: 4.983 min
 Delta R.T.: -0.004 min
 Response: 15580698
 Conc: 355.20 ng/ml



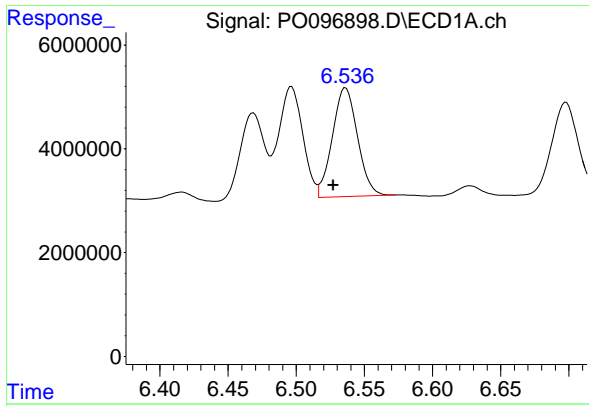
#24 AR-1248-4

R.T.: 6.497 min
 Delta R.T.: 0.009 min
 Response: 26577224
 Conc: 292.56 ng/ml



#24 AR-1248-4

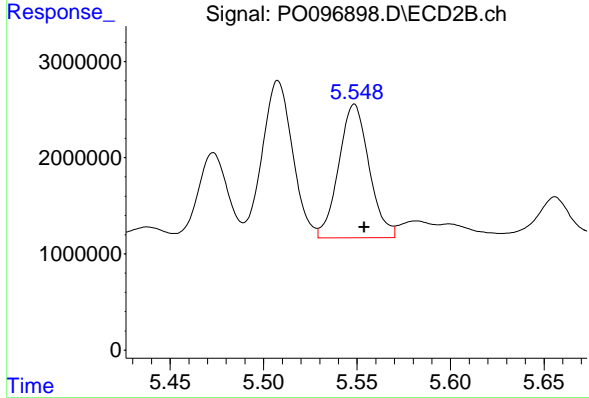
R.T.: 5.155 min
 Delta R.T.: -0.004 min
 Response: 16674902
 Conc: 326.64 ng/ml



#25 AR-1248-5

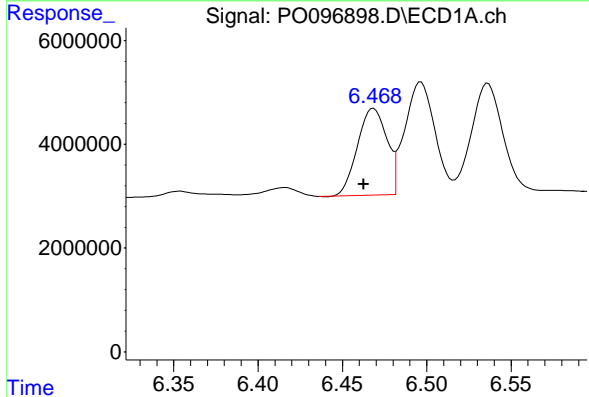
R.T.: 6.536 min
 Delta R.T.: 0.009 min
 Response: 26967914
 Conc: 306.15 ng/ml

Instrument :
 ECD_O
 ClientSampleId :



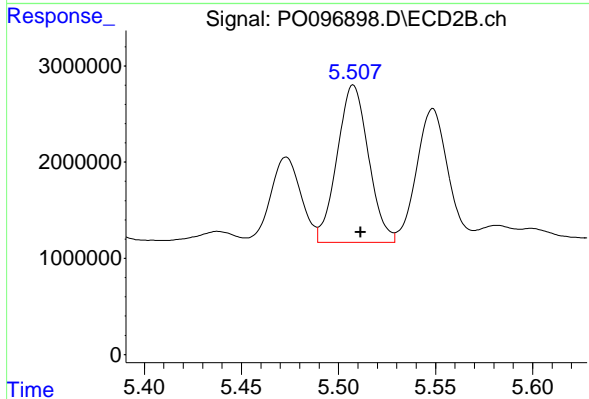
#25 AR-1248-5

R.T.: 5.549 min
 Delta R.T.: -0.005 min
 Response: 15710414
 Conc: 336.04 ng/ml



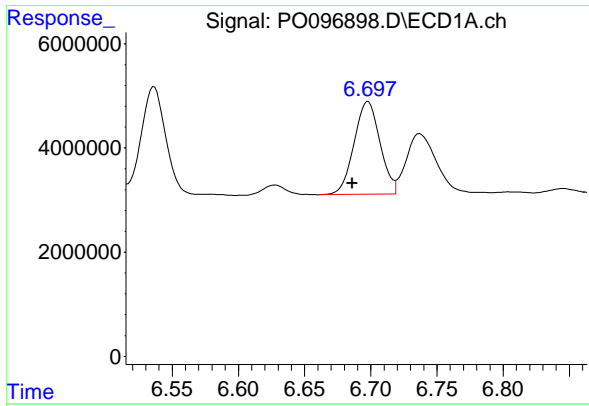
#26 AR-1254-1

R.T.: 6.468 min
 Delta R.T.: 0.006 min
 Response: 20177897
 Conc: 184.63 ng/ml



#26 AR-1254-1

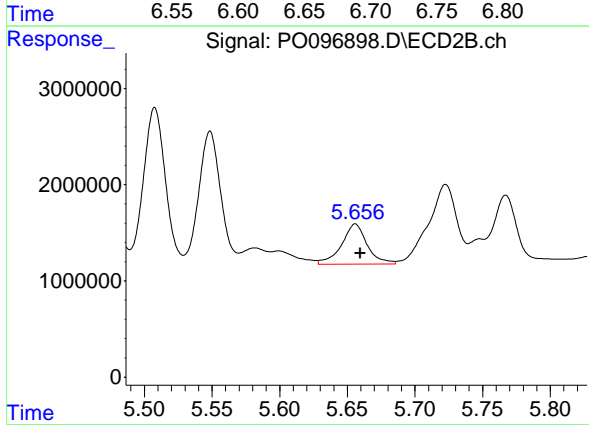
R.T.: 5.508 min
 Delta R.T.: -0.004 min
 Response: 18423751
 Conc: 249.66 ng/ml



#27 AR-1254-2

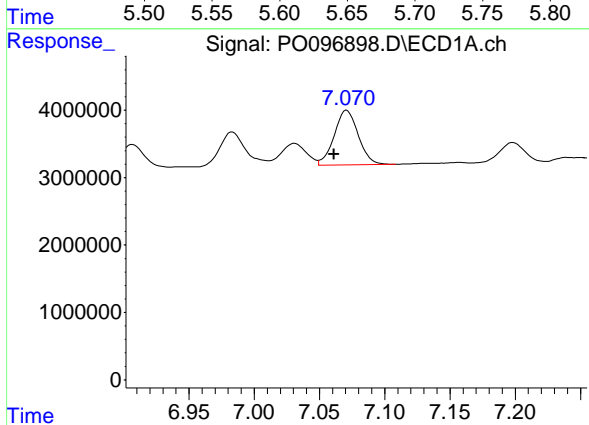
R.T.: 6.698 min
 Delta R.T.: 0.012 min
 Response: 24320547
 Conc: 150.85 ng/ml

Instrument :
 ECD_O
 ClientSampleId :



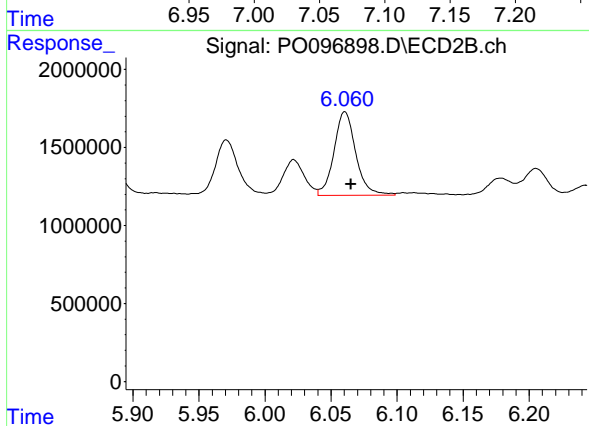
#27 AR-1254-2

R.T.: 5.656 min
 Delta R.T.: -0.004 min
 Response: 5553119
 Conc: 84.29 ng/ml



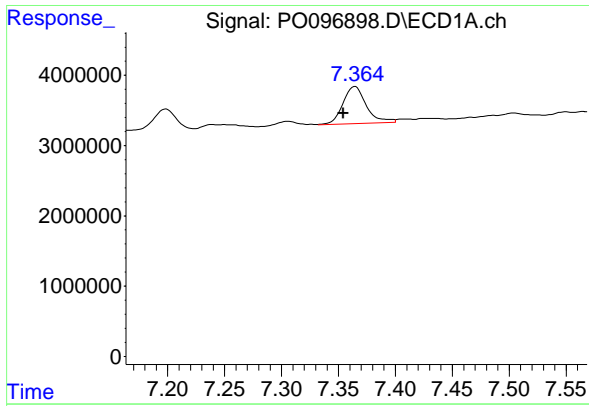
#28 AR-1254-3

R.T.: 7.071 min
 Delta R.T.: 0.010 min
 Response: 10417340
 Conc: 66.48 ng/ml



#28 AR-1254-3

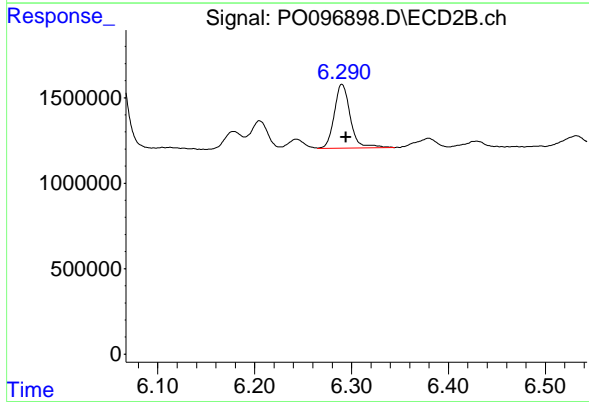
R.T.: 6.061 min
 Delta R.T.: -0.005 min
 Response: 6167233
 Conc: 61.02 ng/ml



#29 AR-1254-4

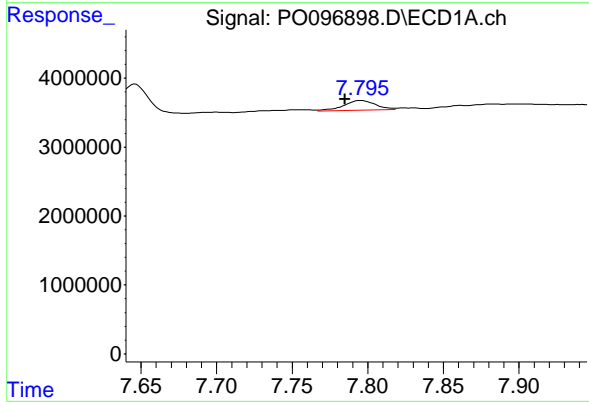
R.T.: 7.365 min
 Delta R.T.: 0.010 min
 Response: 7641653
 Conc: 75.80 ng/ml

Instrument :
 ECD_O
 ClientSampleId :



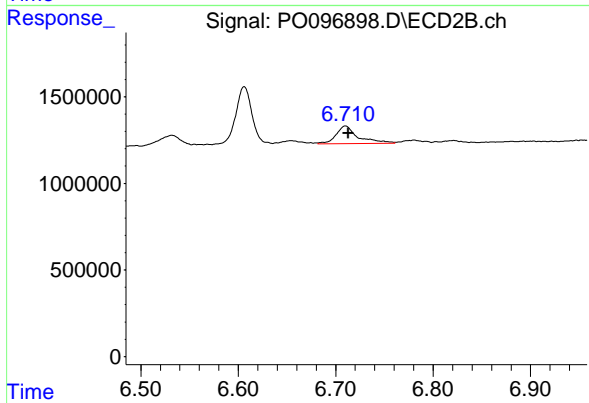
#29 AR-1254-4

R.T.: 6.290 min
 Delta R.T.: -0.004 min
 Response: 4285158
 Conc: 74.04 ng/ml



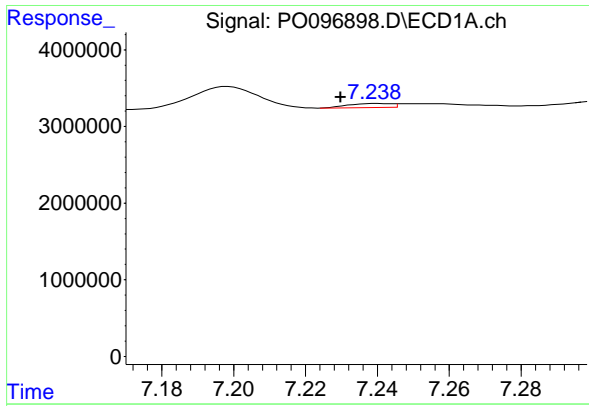
#30 AR-1254-5

R.T.: 7.795 min
 Delta R.T.: 0.011 min
 Response: 2033958
 Conc: 18.13 ng/ml



#30 AR-1254-5

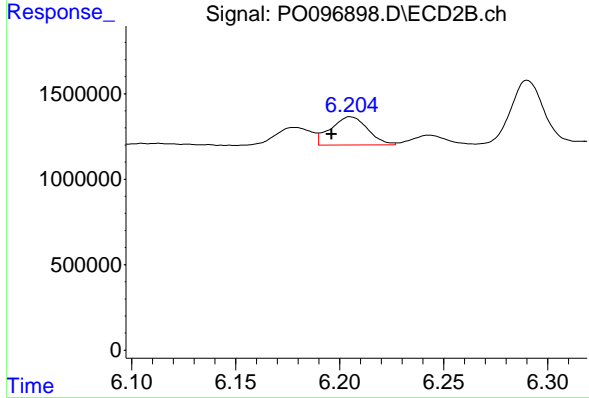
R.T.: 6.710 min
 Delta R.T.: -0.003 min
 Response: 1606769
 Conc: 18.28 ng/ml



#31 AR-1260-1

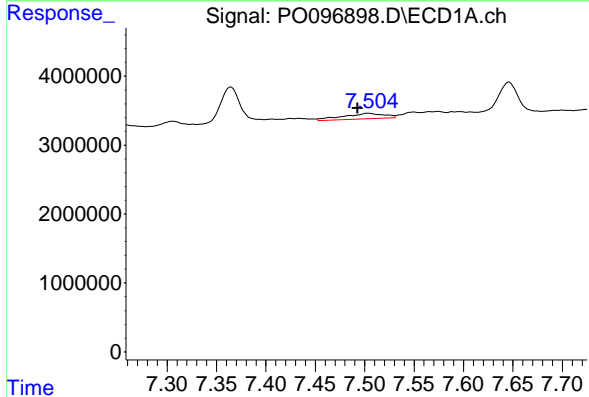
R.T.: 7.239 min
 Delta R.T.: 0.010 min
 Response: 439867
 Conc: 3.50 ng/ml

Instrument :
 ECD_O
 ClientSampleId :



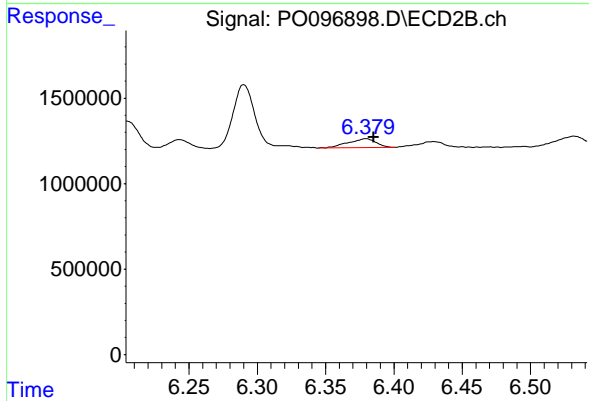
#31 AR-1260-1

R.T.: 6.205 min
 Delta R.T.: 0.009 min
 Response: 2041334
 Conc: 29.01 ng/ml



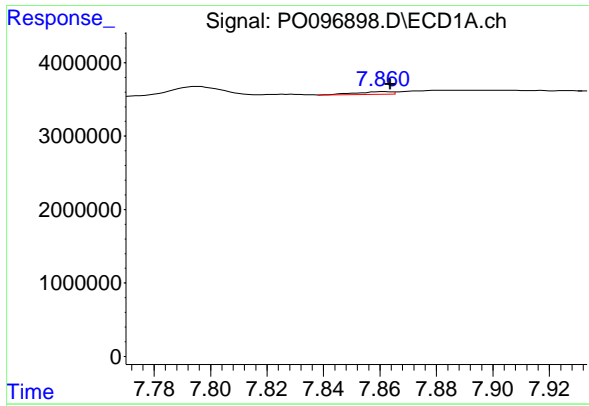
#32 AR-1260-2

R.T.: 7.504 min
 Delta R.T.: 0.011 min
 Response: 2285891
 Conc: 16.97 ng/ml



#32 AR-1260-2

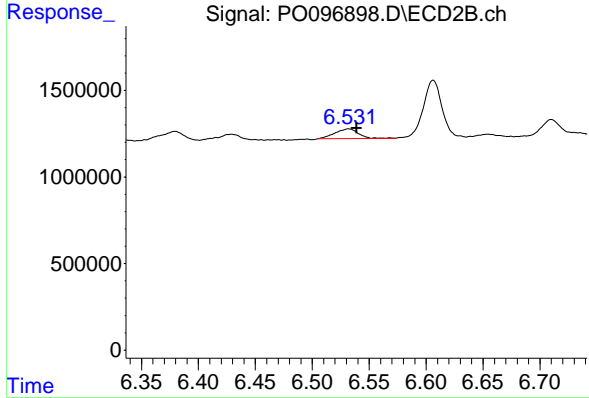
R.T.: 6.380 min
 Delta R.T.: -0.006 min
 Response: 747792
 Conc: 8.96 ng/ml



#33 AR-1260-3

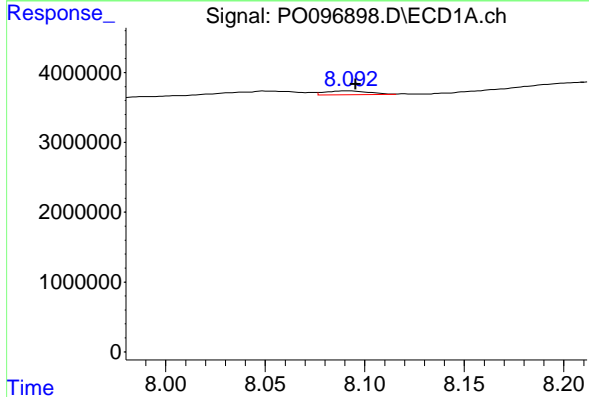
R.T.: 7.861 min
 Delta R.T.: -0.003 min
 Response: 315869
 Conc: 3.04 ng/ml

Instrument :
 ECD_O
 ClientSampleId :



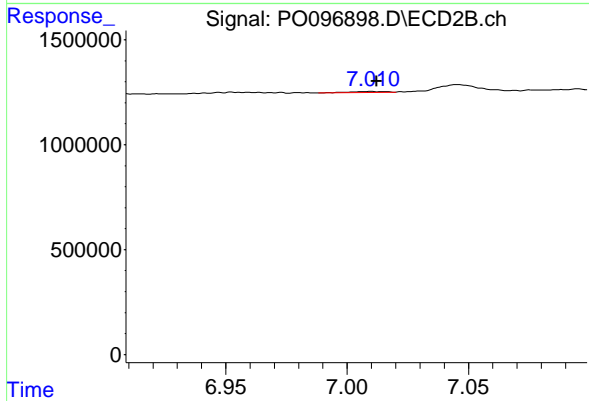
#33 AR-1260-3

R.T.: 6.532 min
 Delta R.T.: -0.007 min
 Response: 819318
 Conc: 10.61 ng/ml



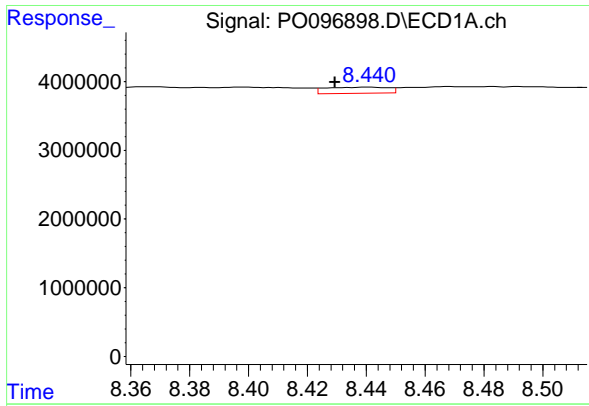
#34 AR-1260-4

R.T.: 8.092 min
 Delta R.T.: -0.004 min
 Response: 891829
 Conc: 7.98 ng/ml



#34 AR-1260-4

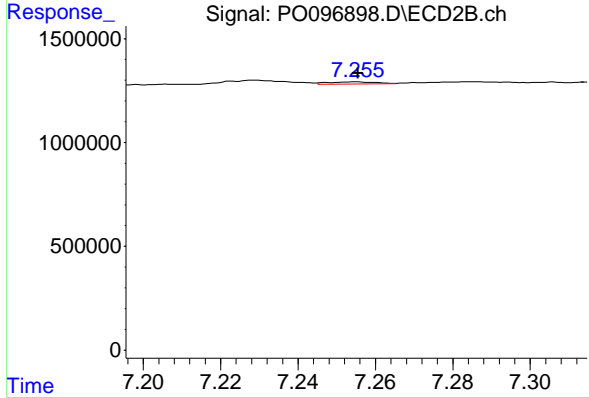
R.T.: 7.010 min
 Delta R.T.: -0.002 min
 Response: 45561
 Conc: 0.71 ng/ml



#35 AR-1260-5

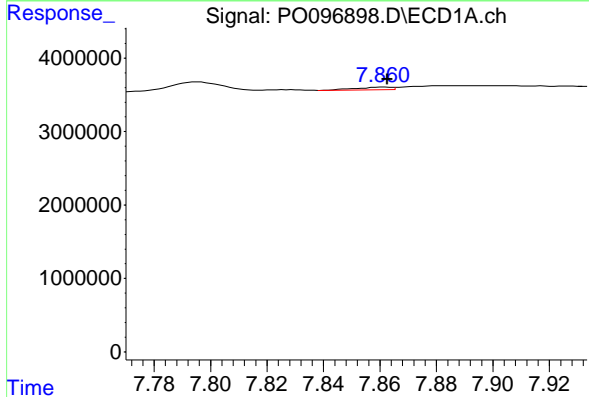
R.T.: 8.441 min
 Delta R.T.: 0.011 min
 Response: 1312413
 Conc: 6.25 ng/ml

Instrument :
 ECD_O
 ClientSampleId :



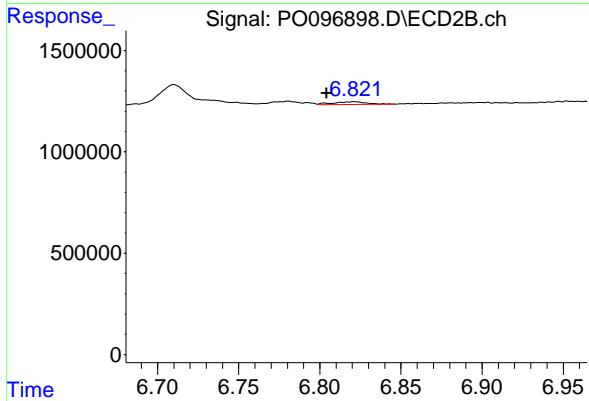
#35 AR-1260-5

R.T.: 7.255 min
 Delta R.T.: 0.000 min
 Response: 82642
 Conc: 0.60 ng/ml



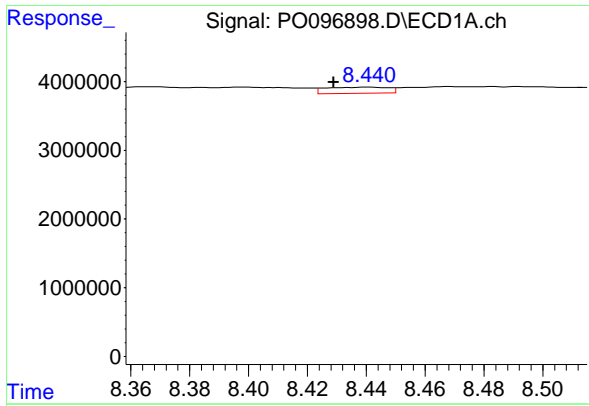
#36 AR-1262-1

R.T.: 7.861 min
 Delta R.T.: -0.001 min
 Response: 315869
 Conc: 2.13 ng/ml



#36 AR-1262-1

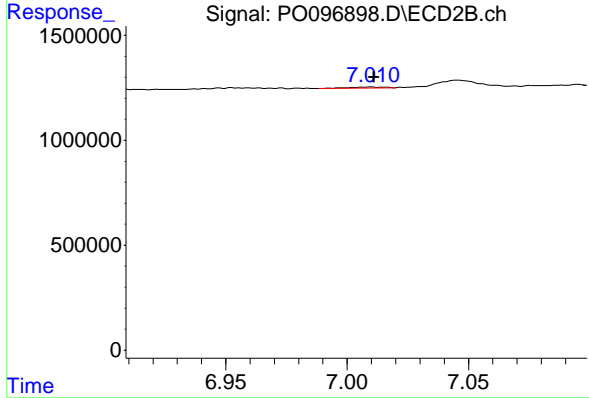
R.T.: 6.821 min
 Delta R.T.: 0.017 min
 Response: 187999
 Conc: 4.78 ng/ml



#37 AR-1262-2

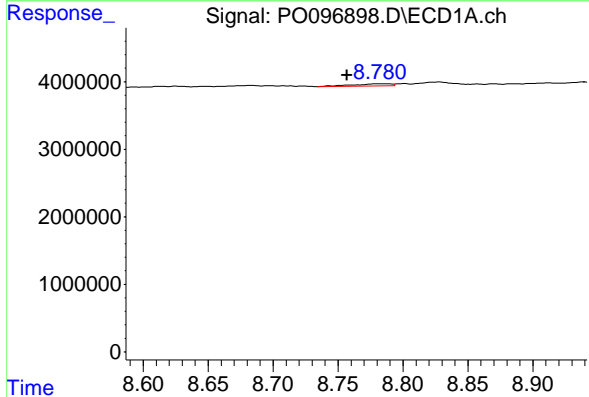
R.T.: 8.441 min
 Delta R.T.: 0.012 min
 Response: 1312413
 Conc: 5.67 ng/ml

Instrument :
 ECD_O
 ClientSampleId :



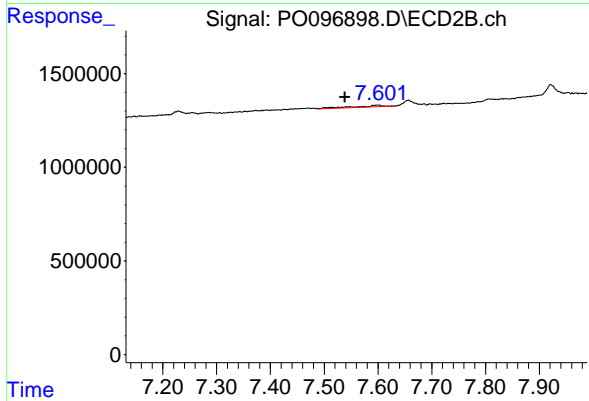
#37 AR-1262-2

R.T.: 7.010 min
 Delta R.T.: -0.001 min
 Response: 45561
 Conc: 0.56 ng/ml



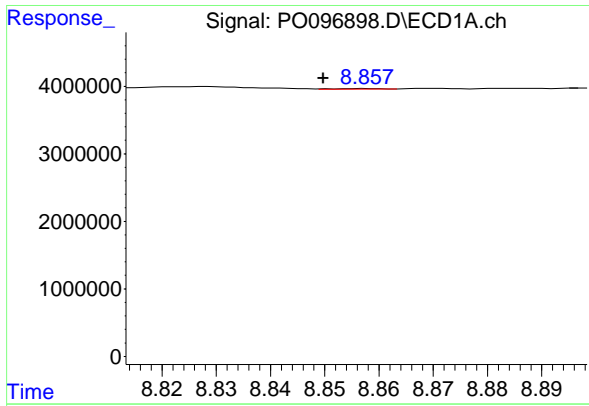
#38 AR-1262-3

R.T.: 8.781 min
 Delta R.T.: 0.025 min
 Response: 669953
 Conc: 4.02 ng/ml



#38 AR-1262-3

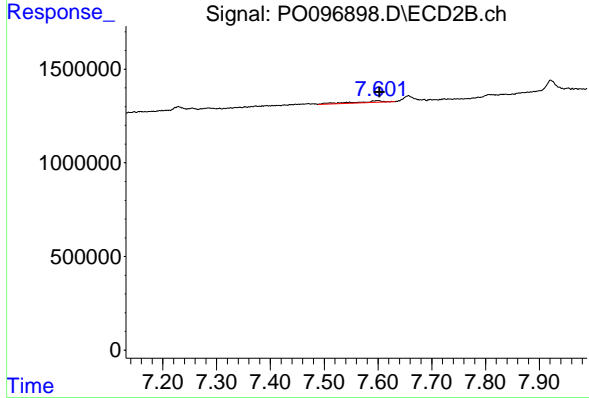
R.T.: 7.601 min
 Delta R.T.: 0.063 min
 Response: 356283
 Conc: 5.55 ng/ml



#39 AR-1262-4

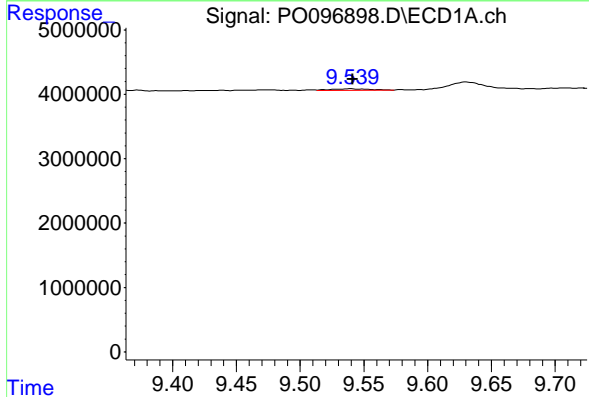
R.T.: 8.858 min
 Delta R.T.: 0.008 min
 Response: 62336
 Conc: 0.86 ng/ml

Instrument :
 ECD_O
 ClientSampleId :



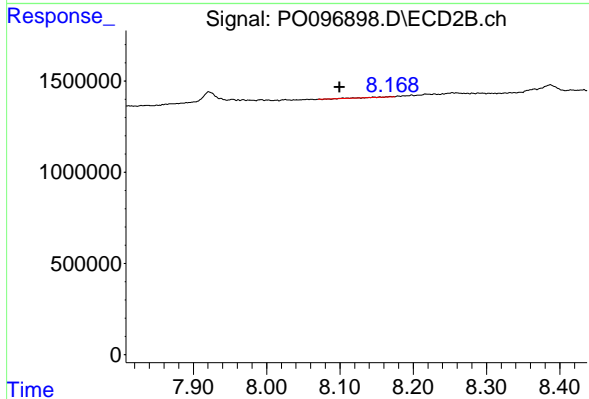
#39 AR-1262-4

R.T.: 7.601 min
 Delta R.T.: -0.002 min
 Response: 356283
 Conc: 3.14 ng/ml



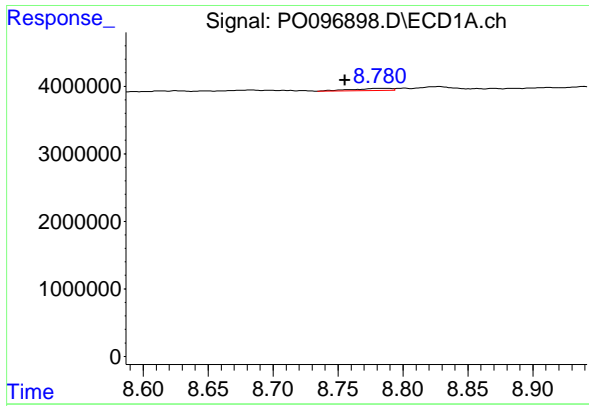
#40 AR-1262-5

R.T.: 9.540 min
 Delta R.T.: -0.002 min
 Response: 461903
 Conc: 5.55 ng/ml



#40 AR-1262-5

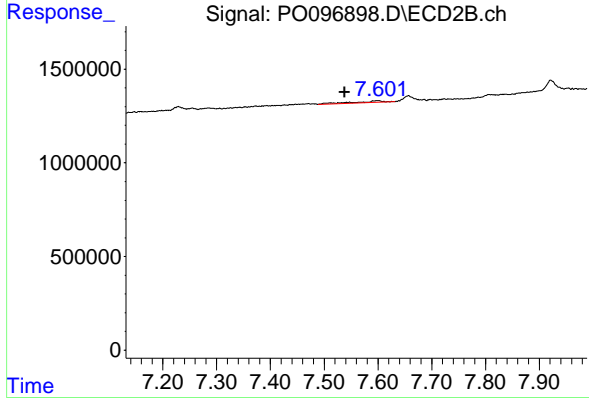
R.T.: 8.169 min
 Delta R.T.: 0.070 min
 Response: 10368
 Conc: 0.20 ng/ml



#41 AR-1268-1

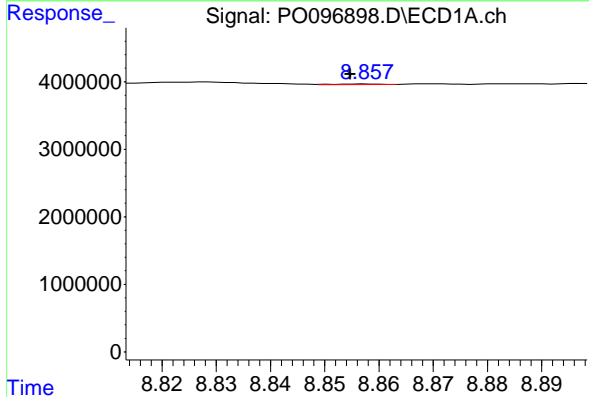
R.T.: 8.781 min
 Delta R.T.: 0.026 min
 Response: 669953
 Conc: 2.18 ng/ml

Instrument :
 ECD_O
 ClientSampleId :



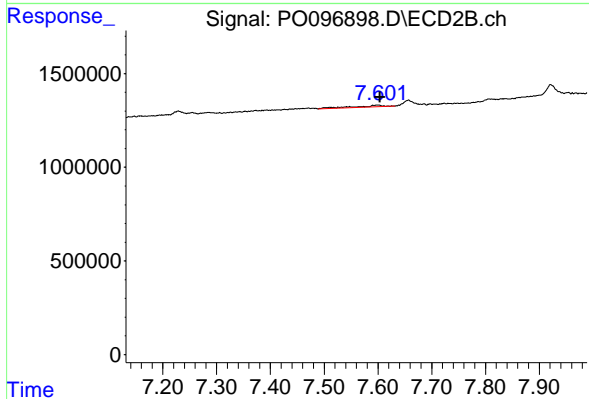
#41 AR-1268-1

R.T.: 7.601 min
 Delta R.T.: 0.063 min
 Response: 356283
 Conc: 1.92 ng/ml



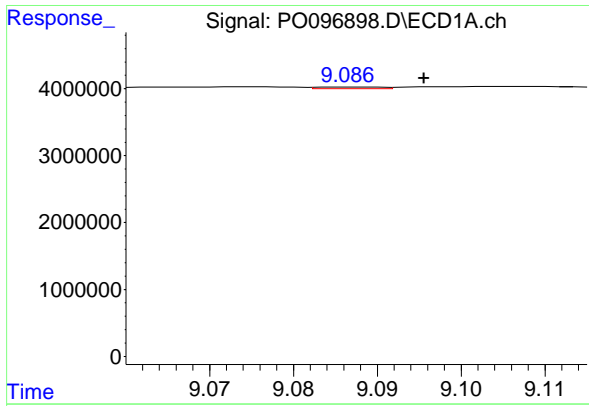
#42 AR-1268-2

R.T.: 8.858 min
 Delta R.T.: 0.003 min
 Response: 62336
 Conc: 0.23 ng/ml



#42 AR-1268-2

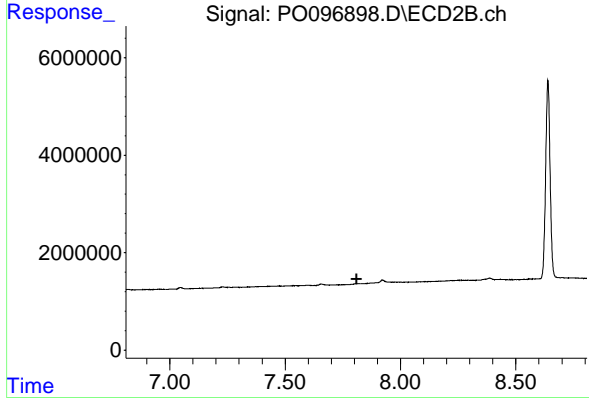
R.T.: 7.601 min
 Delta R.T.: -0.002 min
 Response: 356283
 Conc: 2.12 ng/ml



#43 AR-1268-3

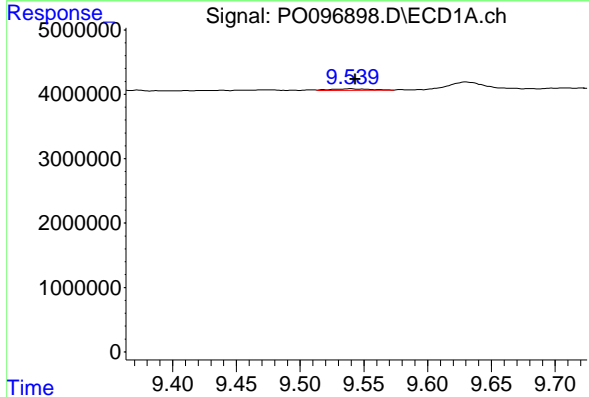
R.T.: 9.086 min
 Delta R.T.: -0.009 min
 Response: 134564
 Conc: 0.53 ng/ml

Instrument :
 ECD_O
 ClientSampleId :



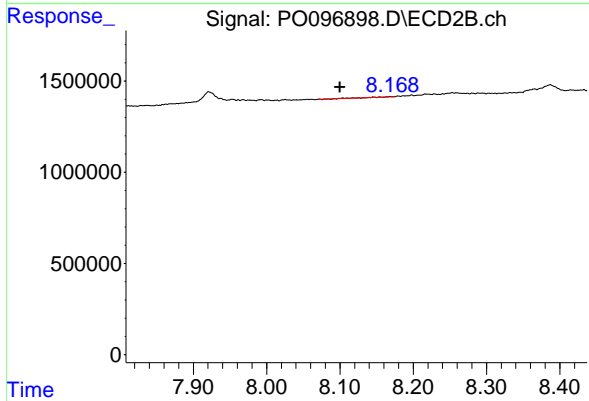
#43 AR-1268-3

R.T.: 7.807 min
 Delta R.T.: -0.003 min
 Response: -15415
 Conc: N.D.



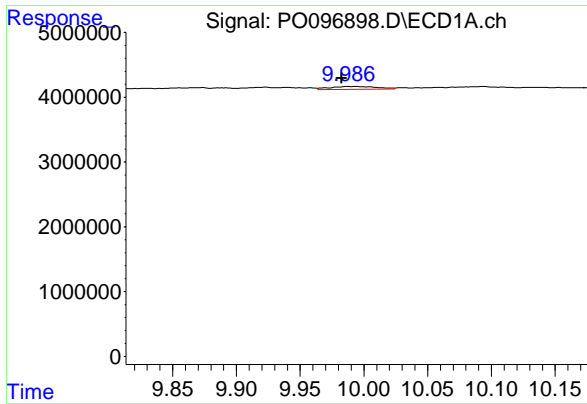
#44 AR-1268-4

R.T.: 9.540 min
 Delta R.T.: -0.003 min
 Response: 461903
 Conc: 4.98 ng/ml



#44 AR-1268-4

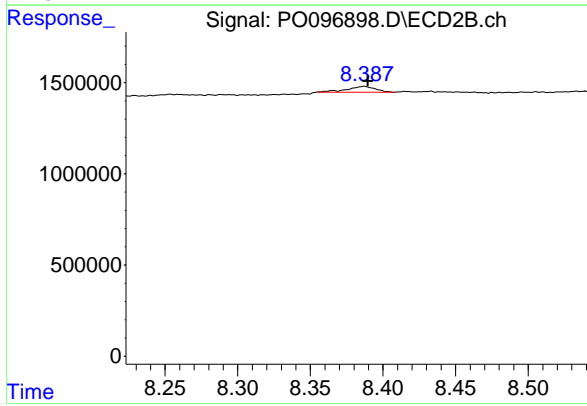
R.T.: 8.169 min
 Delta R.T.: 0.069 min
 Response: 10368
 Conc: 0.17 ng/ml



#45 AR-1268-5

R.T.: 9.994 min
 Delta R.T.: 0.011 min
 Response: 1094422
 Conc: 1.35 ng/ml

Instrument :
 ECD_O
 ClientSampleId :



#45 AR-1268-5

R.T.: 8.387 min
 Delta R.T.: -0.003 min
 Response: 431971
 Conc: 1.04 ng/ml