

Data Path : Z:\pestpcbsrv\HPCHEM1\ECD_0\Data\P0080923\
 Data File : P0096897.D
 Signal(s) : Signal #1: ECD1A.ch Signal #2: ECD2B.ch
 Acq On : 10 Aug 2023 08:14
 Operator : YP/AJ
 Sample : AR1660CCC500
 Misc :
 ALS Vial : 3 Sample Multiplier: 1

Instrument :
 ECD_0
ClientSampleId :
 AR1660CCC500

Manual Integrations
APPROVED

Reviewed By :Yogesh Patel 08/10/2023
 Supervised By :Ankita Jodhani 08/10/2023

Integration File signal 1: autoint1.e
 Integration File signal 2: autoint2.e
 Quant Time: Aug 10 09:15:49 2023
 Quant Method : Z:\pestpcbsrv\HPCHEM1\ECD_0\methods\P0080723.M
 Quant Title : GC EXTRACTABLES
 QLast Update : Tue Aug 08 04:34:41 2023
 Response via : Initial Calibration
 Integrator: ChemStation

Volume Inj. : 2 µl
 Signal #1 Phase : ZB-MR1 Signal #2 Phase: ZB-MR2
 Signal #1 Info : 30Mx0.32mmx 0.50µ Signal #2 Info : 30M x 0.32mm x 0.25µm

Compound	RT#1	RT#2	Resp#1	Resp#2	ng/ml	ng/ml

System Monitoring Compounds						
1) SA Tetrachlo...	4.411	3.618	191.9E6	74711160	57.962	56.437
2) SA Decachlor...	10.351	8.639	123.0E6	59860304	56.189	51.741
Target Compounds						
3) L1 AR-1016-1	5.596	4.704	52736665	24636571	559.935	555.679
4) L1 AR-1016-2	5.619	4.722	75628762	34452758	565.346	563.223
5) L1 AR-1016-3	5.682	4.898	47068312	18893160	540.884	578.331
6) L1 AR-1016-4	5.782	4.941	37009486	14771525	550.979	516.733
7) L1 AR-1016-5	6.084	5.154	39057089	19583627	559.421	509.374m
31) L7 AR-1260-1	7.239	6.190	73154707	36742424	582.034	522.146m
32) L7 AR-1260-2	7.502	6.380	76441558	45410751	567.347	544.081
33) L7 AR-1260-3	7.872	6.534	56029755	40729744	539.921	527.453
34) L7 AR-1260-4	8.105	7.007	62440033	32965141	558.479	514.420
35) L7 AR-1260-5	8.438	7.251	117.9E6	73826113	561.649	532.525

(f)=RT Delta > 1/2 Window (#)=Amounts differ by > 25% (m)=manual int.

Data Path : Z:\pestpcbsrv\HPCHEM1\ECD_O\Data\PO080923\
 Data File : PO096897.D
 Signal(s) : Signal #1: ECD1A.ch Signal #2: ECD2B.ch
 Acq On : 10 Aug 2023 08:14
 Operator : YP/AJ
 Sample : AR1660CCC500
 Misc :
 ALS Vial : 3 Sample Multiplier: 1

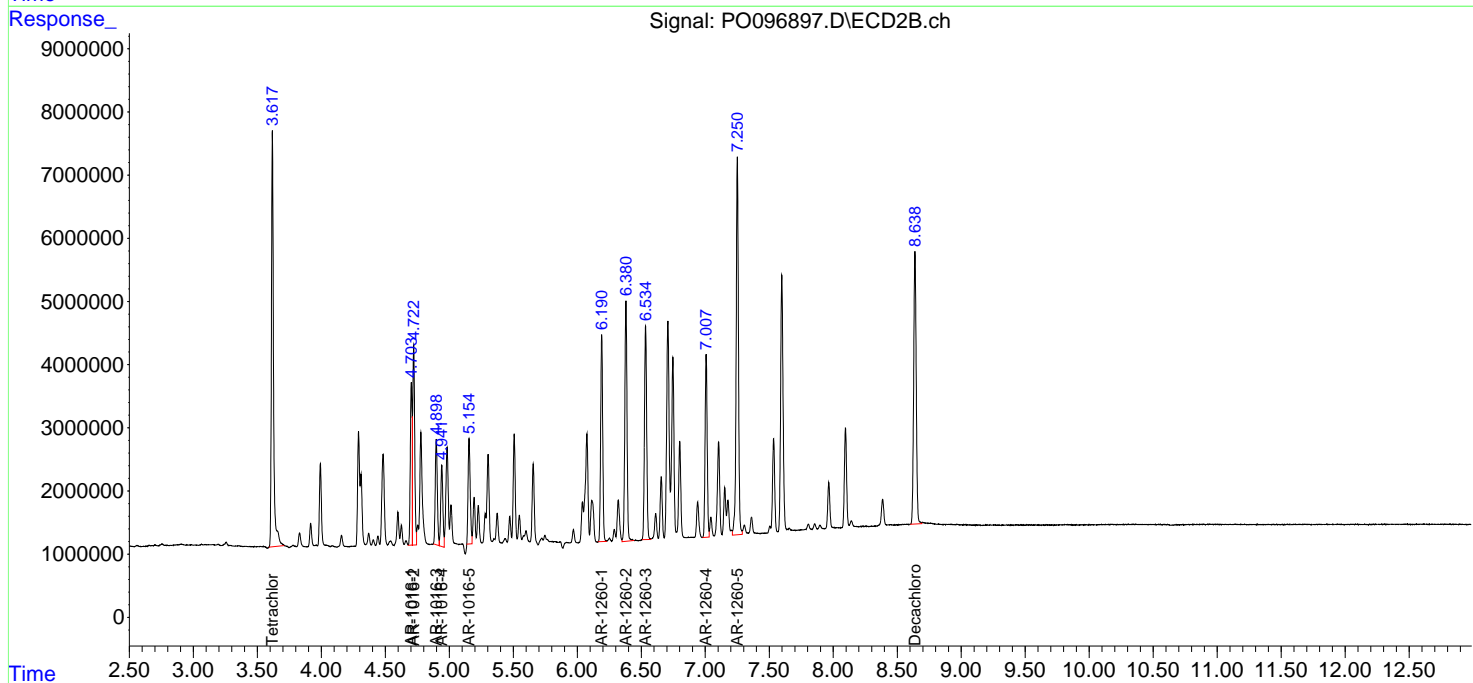
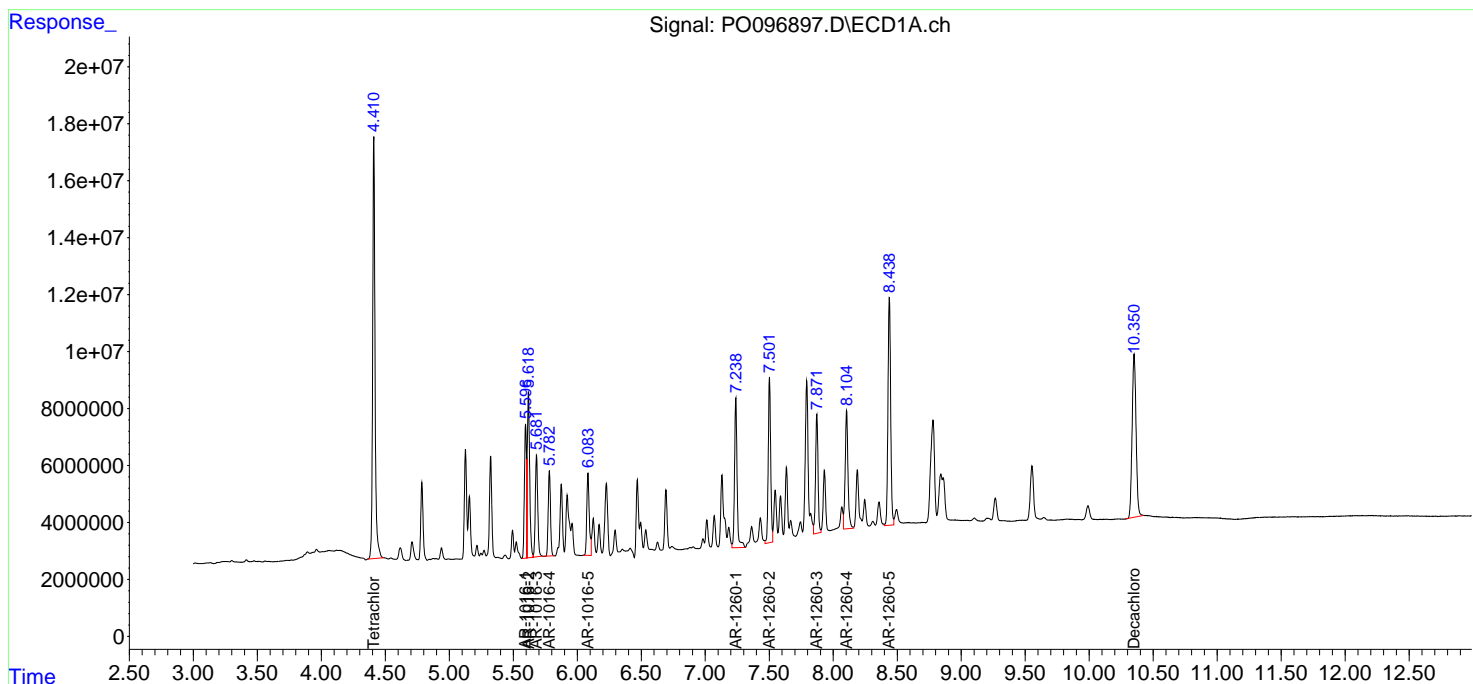
Instrument :
 ECD_O
ClientSampleId :
 AR1660CCC500

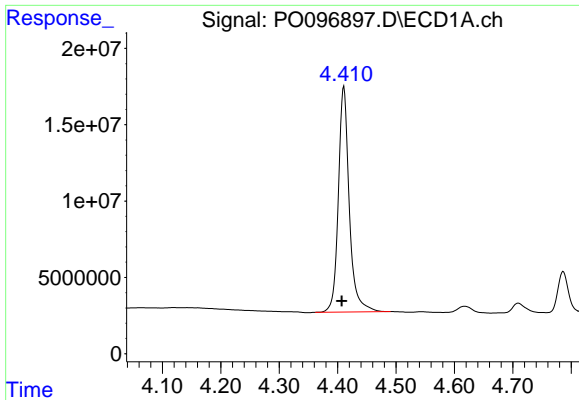
Manual Integrations
APPROVED

Reviewed By :Yogesh Patel 08/10/2023
 Supervised By :Ankita Jodhani 08/10/2023

Integration File signal 1: autoint1.e
 Integration File signal 2: autoint2.e
 Quant Time: Aug 10 09:15:49 2023
 Quant Method : Z:\pestpcbsrv\HPCHEM1\ECD_O\methods\PO080723.M
 Quant Title : GC EXTRACTABLES
 QLast Update : Tue Aug 08 04:34:41 2023
 Response via : Initial Calibration
 Integrator: ChemStation

Volume Inj. : 2 µl
 Signal #1 Phase : ZB-MR1 Signal #2 Phase: ZB-MR2
 Signal #1 Info : 30Mx0.32mmx 0.50µ Signal #2 Info : 30M x 0.32mm x 0.25µm



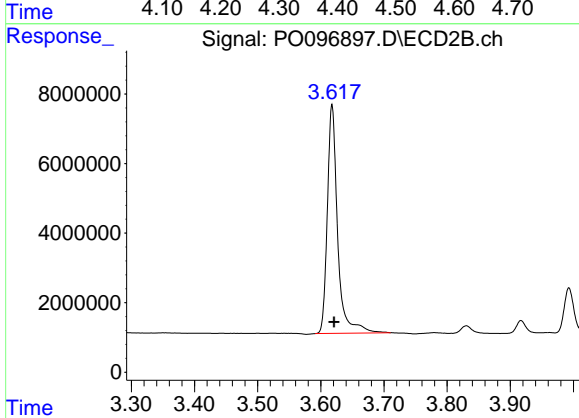


#1 Tetrachloro-m-xylene
 R.T.: 4.411 min
 Delta R.T.: 0.004 min
 Response: 191865082
 Conc: 57.96 ng/ml

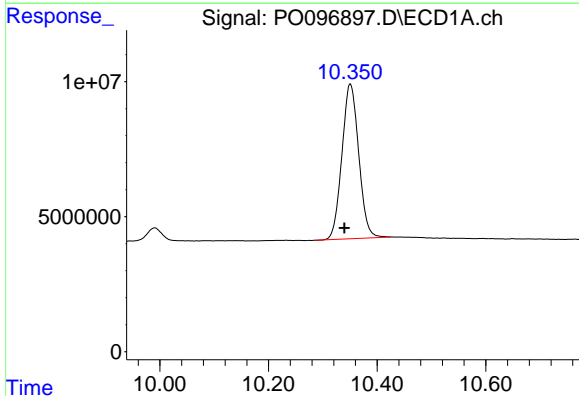
Instrument :
 ECD_O
 ClientSampleId :
 AR1660CCC500

Manual Integrations
 APPROVED

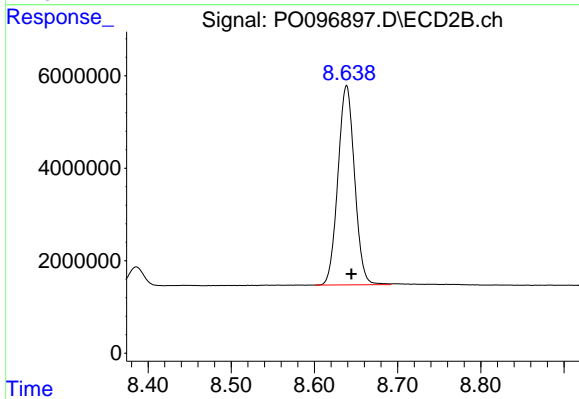
Reviewed By :Yogesh Patel 08/10/2023
 Supervised By :Ankita Jodhani 08/10/2023



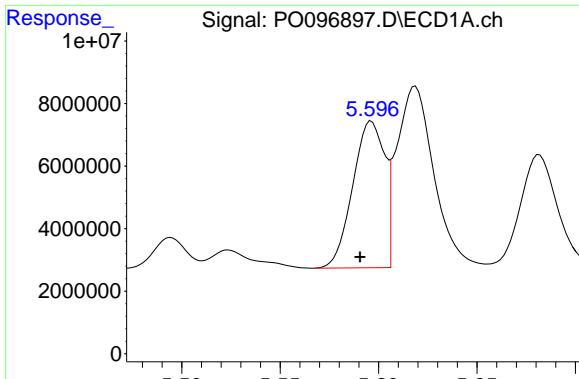
#1 Tetrachloro-m-xylene
 R.T.: 3.618 min
 Delta R.T.: -0.003 min
 Response: 74711160
 Conc: 56.44 ng/ml



#2 Decachlorobiphenyl
 R.T.: 10.351 min
 Delta R.T.: 0.011 min
 Response: 122952517
 Conc: 56.19 ng/ml



#2 Decachlorobiphenyl
 R.T.: 8.639 min
 Delta R.T.: -0.006 min
 Response: 59860304
 Conc: 51.74 ng/ml



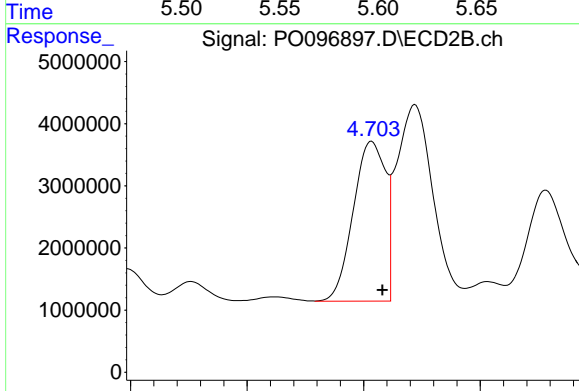
#3 AR-1016-1

R.T.: 5.596 min
 Delta R.T.: 0.006 min
 Response: 52736665
 Conc: 559.93 ng/ml

Instrument :
 ECD_O
 ClientSampleId :
 AR1660CCC500

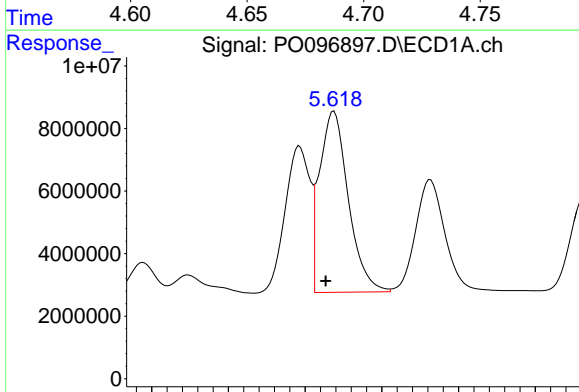
Manual Integrations
 APPROVED

Reviewed By :Yogesh Patel 08/10/2023
 Supervised By :Ankita Jodhani 08/10/2023



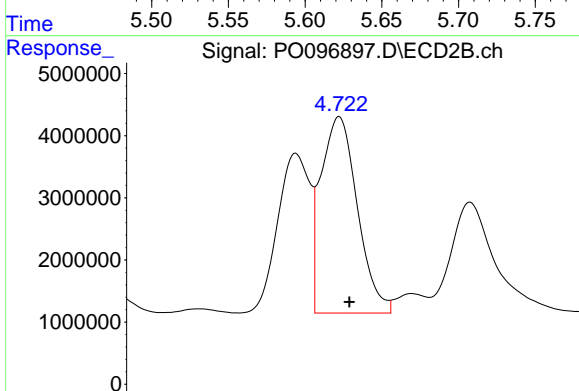
#3 AR-1016-1

R.T.: 4.704 min
 Delta R.T.: -0.005 min
 Response: 24636571
 Conc: 555.68 ng/ml



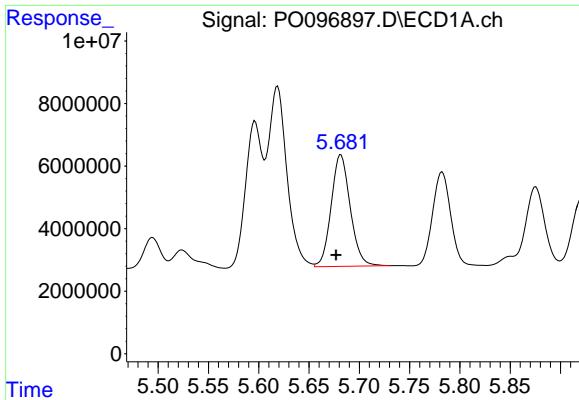
#4 AR-1016-2

R.T.: 5.619 min
 Delta R.T.: 0.005 min
 Response: 75628762
 Conc: 565.35 ng/ml



#4 AR-1016-2

R.T.: 4.722 min
 Delta R.T.: -0.004 min
 Response: 34452758
 Conc: 563.22 ng/ml



#5 AR-1016-3

R.T.: 5.682 min
 Delta R.T.: 0.005 min
 Response: 47068312
 Conc: 540.88 ng/ml

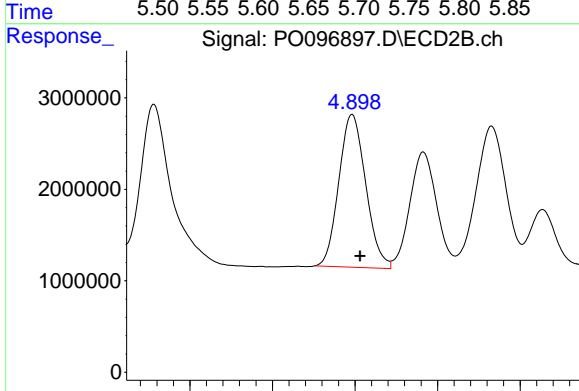
Instrument :

ECD_O

ClientSampleId :
 AR1660CCC500

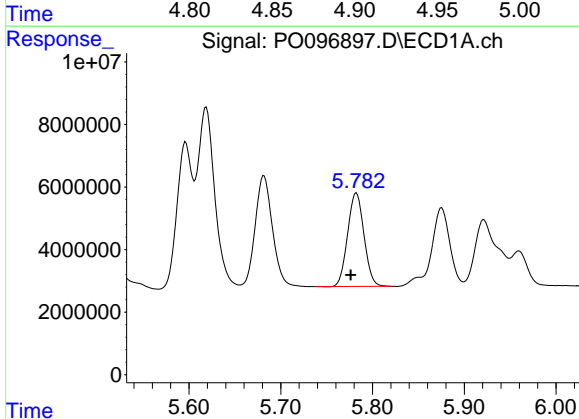
Manual Integrations
 APPROVED

Reviewed By :Yogesh Patel 08/10/2023
 Supervised By :Ankita Jodhani 08/10/2023



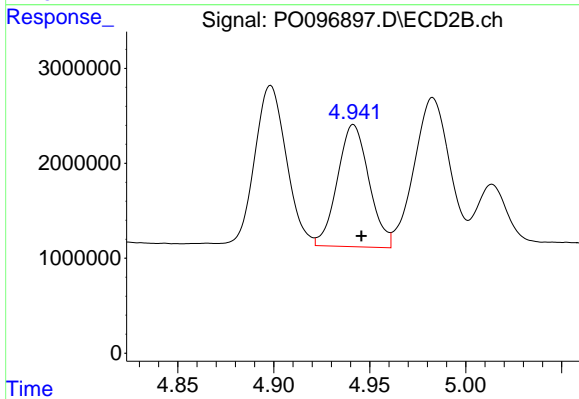
#5 AR-1016-3

R.T.: 4.898 min
 Delta R.T.: -0.005 min
 Response: 18893160
 Conc: 578.33 ng/ml



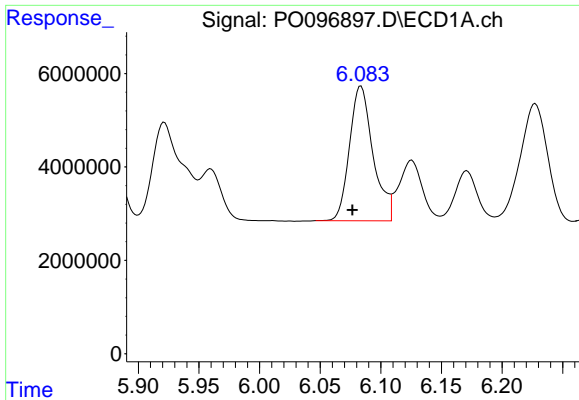
#6 AR-1016-4

R.T.: 5.782 min
 Delta R.T.: 0.006 min
 Response: 37009486
 Conc: 550.98 ng/ml



#6 AR-1016-4

R.T.: 4.941 min
 Delta R.T.: -0.004 min
 Response: 14771525
 Conc: 516.73 ng/ml



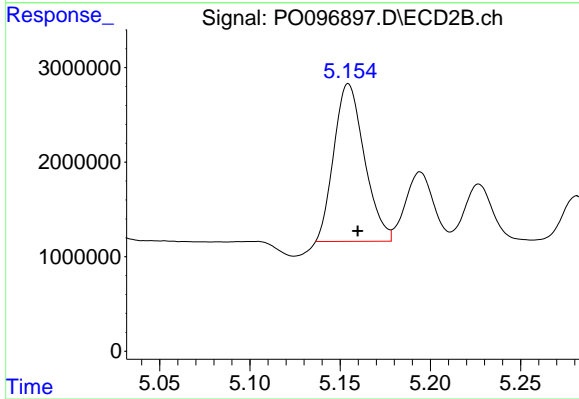
#7 AR-1016-5

R.T.: 6.084 min
 Delta R.T.: 0.007 min
 Response: 39057089
 Conc: 559.42 ng/ml

Instrument :
 ECD_O
 ClientSampleId :
 AR1660CCC500

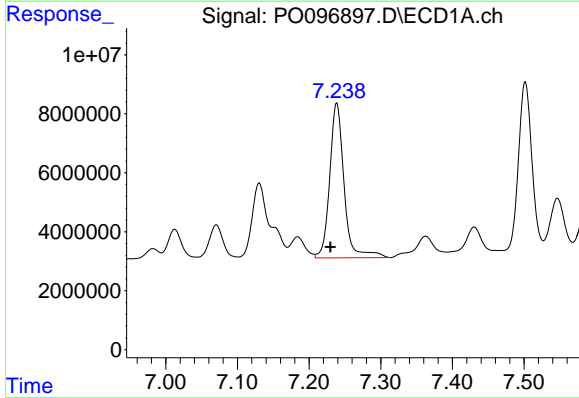
Manual Integrations
 APPROVED

Reviewed By :Yogesh Patel 08/10/2023
 Supervised By :Ankita Jodhani 08/10/2023



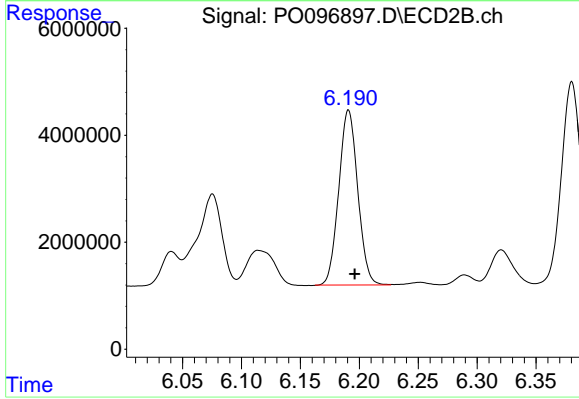
#7 AR-1016-5

R.T.: 5.154 min
 Delta R.T.: -0.006 min
 Response: 19583627
 Conc: 509.37 ng/ml m



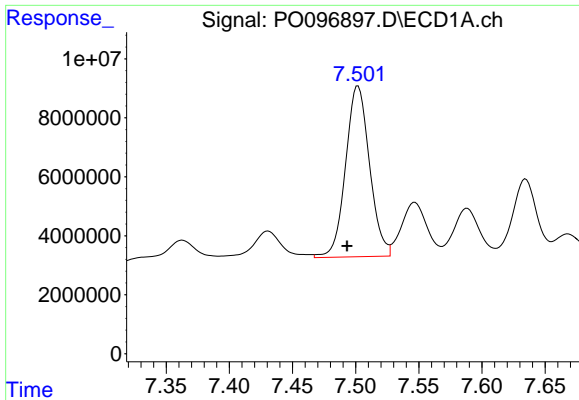
#31 AR-1260-1

R.T.: 7.239 min
 Delta R.T.: 0.009 min
 Response: 73154707
 Conc: 582.03 ng/ml



#31 AR-1260-1

R.T.: 6.190 min
 Delta R.T.: -0.006 min
 Response: 36742424
 Conc: 522.15 ng/ml m



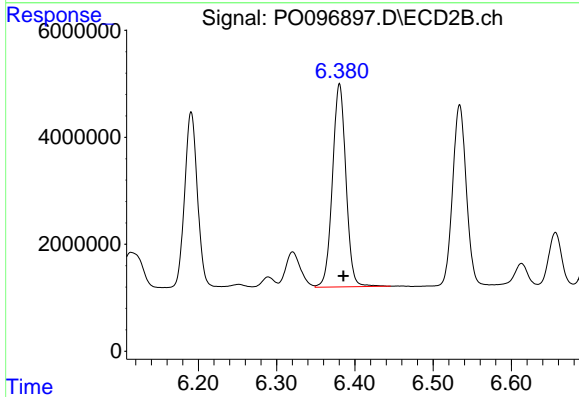
#32 AR-1260-2

R.T.: 7.502 min
 Delta R.T.: 0.009 min
 Response: 76441558
 Conc: 567.35 ng/ml

Instrument :
 ECD_O
 ClientSampleId :
 AR1660CCC500

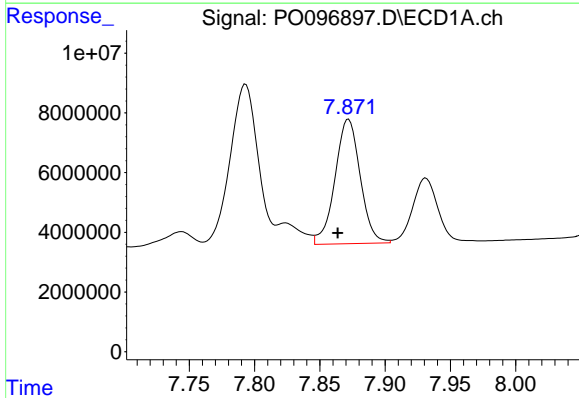
Manual Integrations
 APPROVED

Reviewed By :Yogesh Patel 08/10/2023
 Supervised By :Ankita Jodhani 08/10/2023



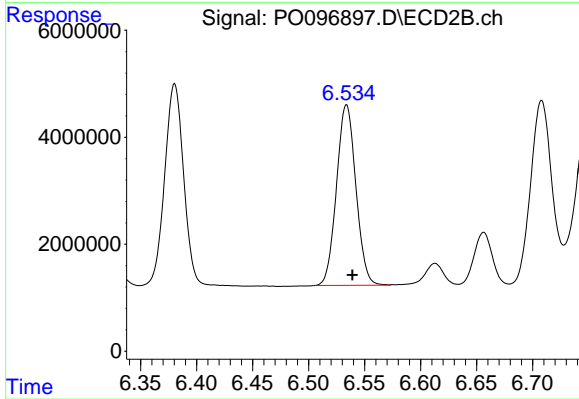
#32 AR-1260-2

R.T.: 6.380 min
 Delta R.T.: -0.005 min
 Response: 45410751
 Conc: 544.08 ng/ml



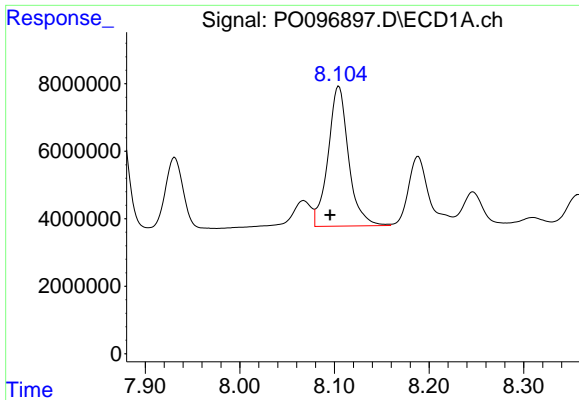
#33 AR-1260-3

R.T.: 7.872 min
 Delta R.T.: 0.008 min
 Response: 56029755
 Conc: 539.92 ng/ml



#33 AR-1260-3

R.T.: 6.534 min
 Delta R.T.: -0.005 min
 Response: 40729744
 Conc: 527.45 ng/ml



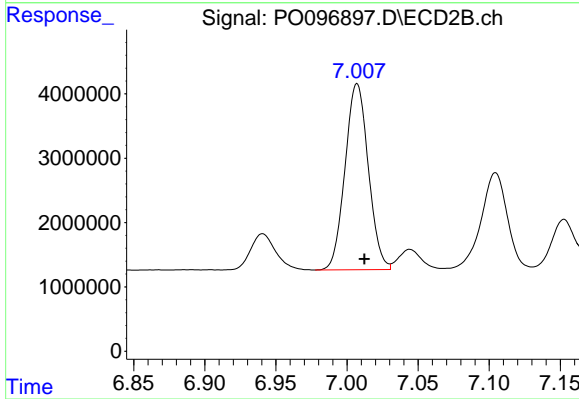
#34 AR-1260-4

R.T.: 8.105 min
 Delta R.T.: 0.009 min
 Response: 62440033
 Conc: 558.48 ng/ml

Instrument :
 ECD_O
 ClientSampleId :
 AR1660CCC500

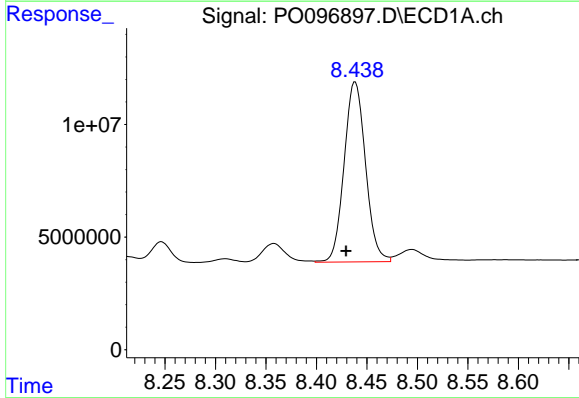
Manual Integrations
 APPROVED

Reviewed By :Yogesh Patel 08/10/2023
 Supervised By :Ankita Jodhani 08/10/2023



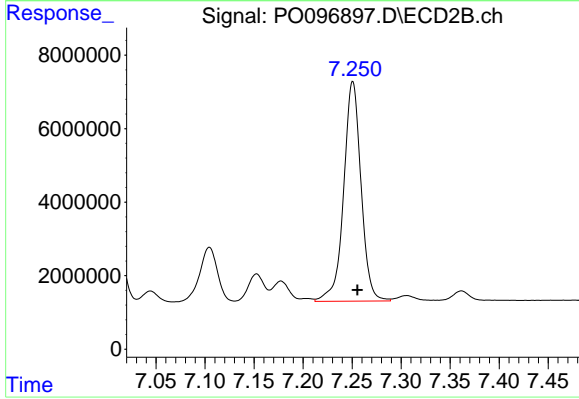
#34 AR-1260-4

R.T.: 7.007 min
 Delta R.T.: -0.005 min
 Response: 32965141
 Conc: 514.42 ng/ml



#35 AR-1260-5

R.T.: 8.438 min
 Delta R.T.: 0.009 min
 Response: 117934950
 Conc: 561.65 ng/ml



#35 AR-1260-5

R.T.: 7.251 min
 Delta R.T.: -0.005 min
 Response: 73826113
 Conc: 532.52 ng/ml