

Data Path : Z:\pestpcbsrv\HPCHEM1\ECD_0\Data\P0081021\
 Data File : P0080331.D
 Signal(s) : Signal #1: ECD1A.CH Signal #2: ECD2B.CH
 Acq On : 10 Aug 2021 22:46
 Operator : DD\AJ
 Sample : AR1254ICC1000
 Misc :
 ALS Vial : 20 Sample Multiplier: 1

Instrument :
 ECD_0
 ClientSampleId :
 AR1254ICC1000

Integration File signal 1: autoint1.e
 Integration File signal 2: autoint2.e
 Quant Time: Aug 11 03:59:31 2021
 Quant Method : Z:\pestpcbsrv\HPCHEM1\ECD_0\methods\P0081021.M
 Quant Title : GC EXTRACTABLES
 QLast Update : Wed Aug 11 03:59:08 2021
 Response via : Initial Calibration
 Integrator: ChemStation 6890 Scale Mode: Small noise peaks clipped

Volume Inj. : 2 µl
 Signal #1 Phase : ZB-MR1 Signal #2 Phase: ZB-MR2
 Signal #1 Info : 30Mx0.32mmx 0.50µ Signal #2 Info : 30M x 0.32mm x 0.25µm

Compound	RT#1	RT#2	Resp#1	Resp#2	ng/ml	ng/ml

System Monitoring Compounds						
1) SA Tetrachlo...	4.995	4.109	7160104	2454355	97.596	95.783
2) SA Decachlor...	11.098	9.511	5033919	2090424	92.983	91.330
Target Compounds						
26) L6 AR-1254-1	7.239	6.270	2320063	1339479	924.616	918.301
27) L6 AR-1254-2	7.470	6.430	3593559	1169548	939.600	905.065
28) L6 AR-1254-3	7.853	6.858	3824244	1867117	946.521	927.198
29) L6 AR-1254-4	8.150	7.100	2799908	1200727	946.701	921.446
30) L6 AR-1254-5	8.581	7.535	2931243	1628905	947.778	933.556

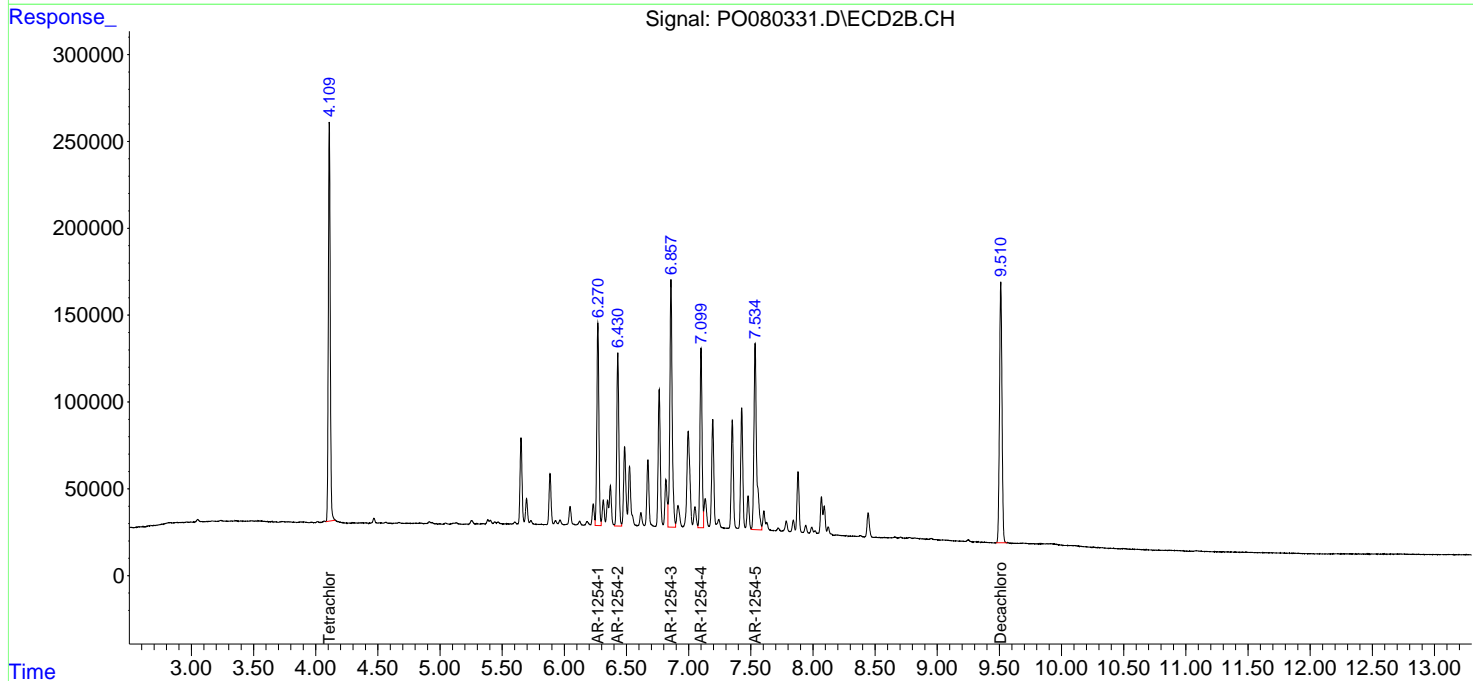
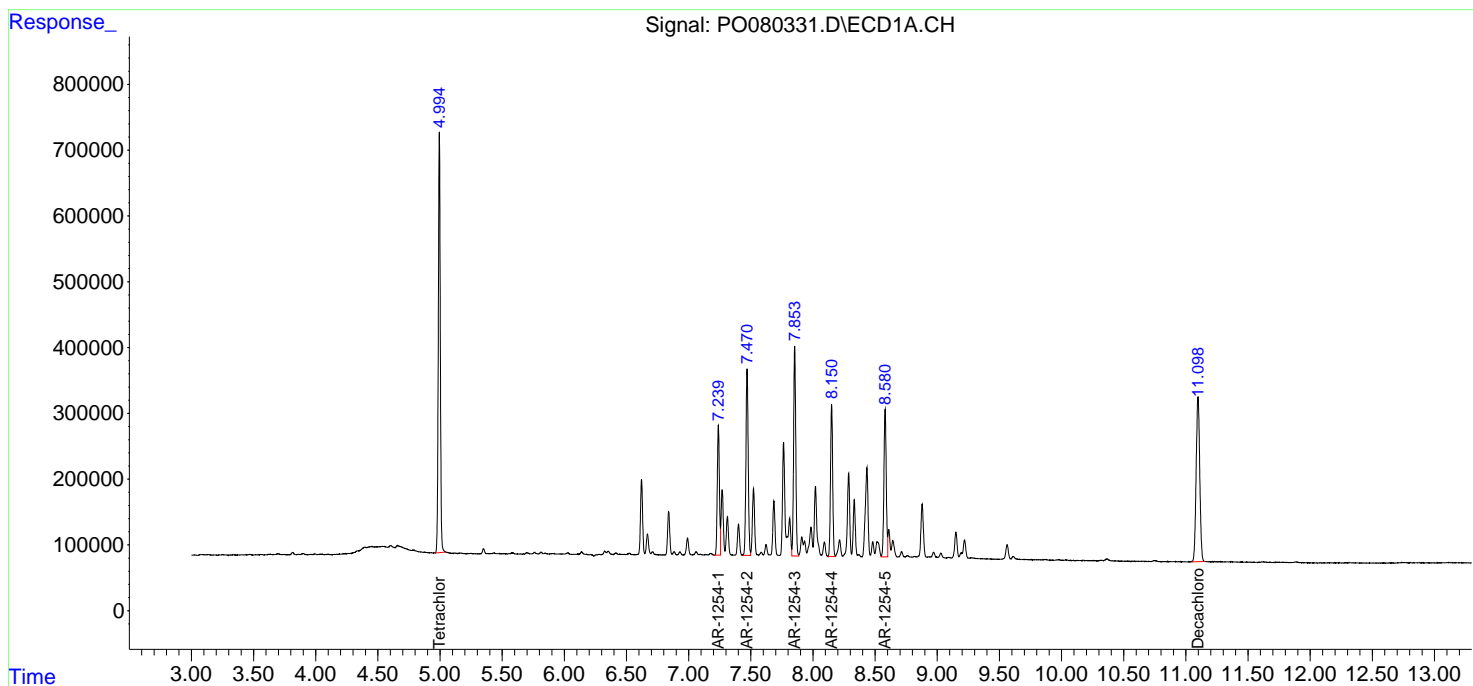
(f)=RT Delta > 1/2 Window (#)=Amounts differ by > 25% (m)=manual int.

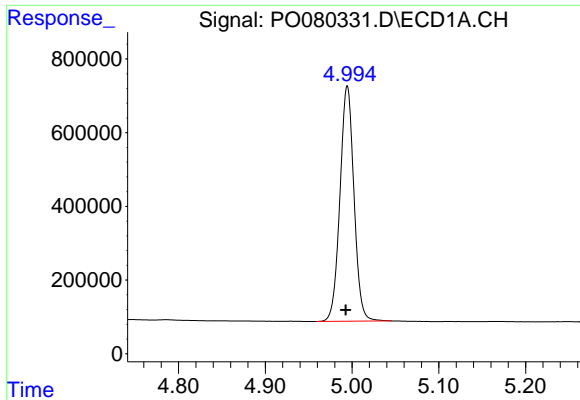
Data Path : Z:\pestpcbsrv\HPCHEM1\ECD_0\Data\P0081021\
 Data File : P0080331.D
 Signal(s) : Signal #1: ECD1A.CH Signal #2: ECD2B.CH
 Acq On : 10 Aug 2021 22:46
 Operator : DD\AJ
 Sample : AR1254ICC1000
 Misc :
 ALS Vial : 20 Sample Multiplier: 1

Instrument :
 ECD_O
 ClientSampled :
 AR1254ICC1000

Integration File signal 1: autoint1.e
 Integration File signal 2: autoint2.e
 Quant Time: Aug 11 03:59:31 2021
 Quant Method : Z:\pestpcbsrv\HPCHEM1\ECD_0\methods\P0081021.M
 Quant Title : GC EXTRACTABLES
 QLast Update : Wed Aug 11 03:59:08 2021
 Response via : Initial Calibration
 Integrator: ChemStation 6890 Scale Mode: Small noise peaks clipped

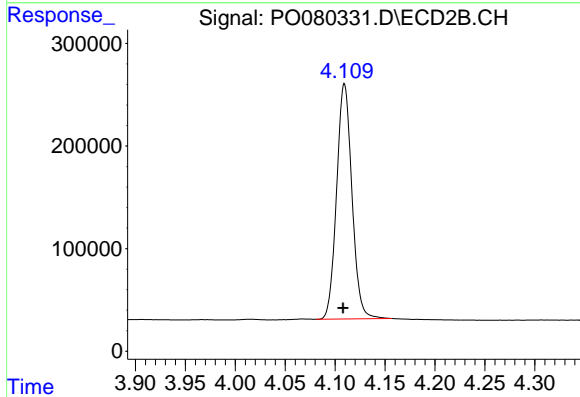
Volume Inj. : 2 µl
 Signal #1 Phase : ZB-MR1 Signal #2 Phase: ZB-MR2
 Signal #1 Info : 30Mx0.32mmx 0.50µ Signal #2 Info : 30M x 0.32mm x 0.25µm



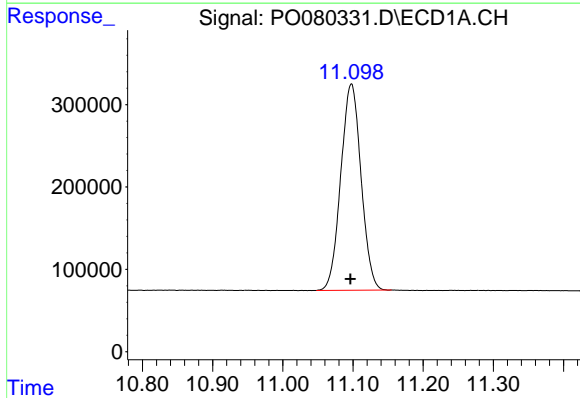


#1 Tetrachloro-m-xylene
 R.T.: 4.995 min
 Delta R.T.: 0.002 min
 Response: 7160104
 Conc: 97.60 ng/ml

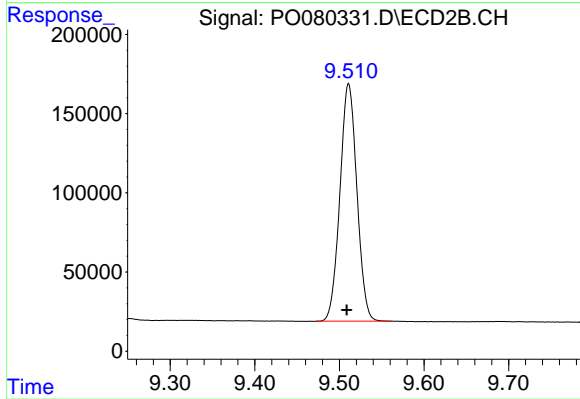
Instrument :
 ECD_O
 ClientSampleId :
 AR1254ICC1000



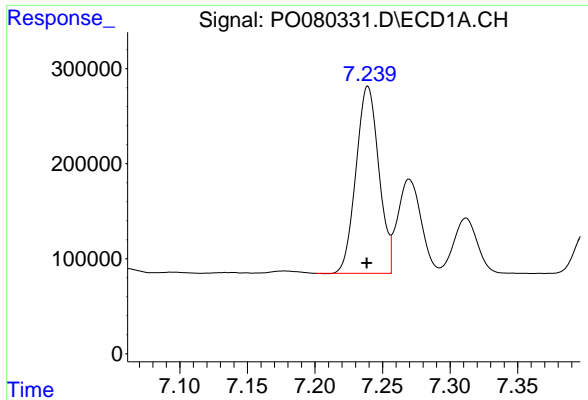
#1 Tetrachloro-m-xylene
 R.T.: 4.109 min
 Delta R.T.: 0.001 min
 Response: 2454355
 Conc: 95.78 ng/ml



#2 Decachlorobiphenyl
 R.T.: 11.098 min
 Delta R.T.: 0.001 min
 Response: 5033919
 Conc: 92.98 ng/ml



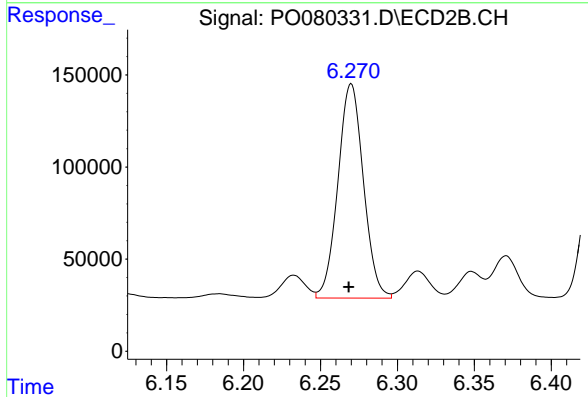
#2 Decachlorobiphenyl
 R.T.: 9.511 min
 Delta R.T.: 0.002 min
 Response: 2090424
 Conc: 91.33 ng/ml



#26 AR-1254-1

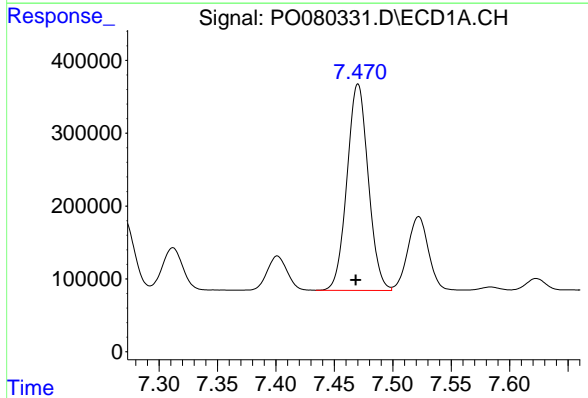
R.T.: 7.239 min
 Delta R.T.: 0.000 min
 Response: 2320063
 Conc: 924.62 ng/ml

Instrument :
 ECD_O
 ClientSampleId :
 AR1254ICC1000



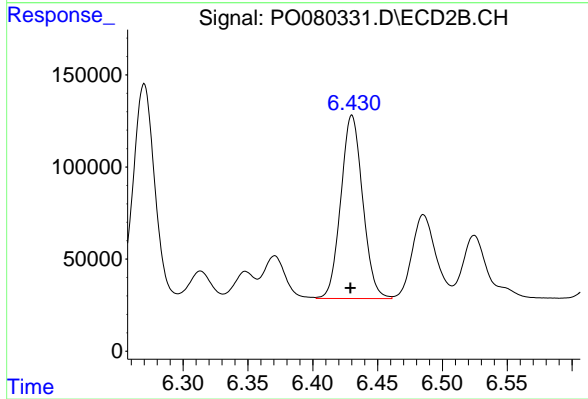
#26 AR-1254-1

R.T.: 6.270 min
 Delta R.T.: 0.002 min
 Response: 1339479
 Conc: 918.30 ng/ml



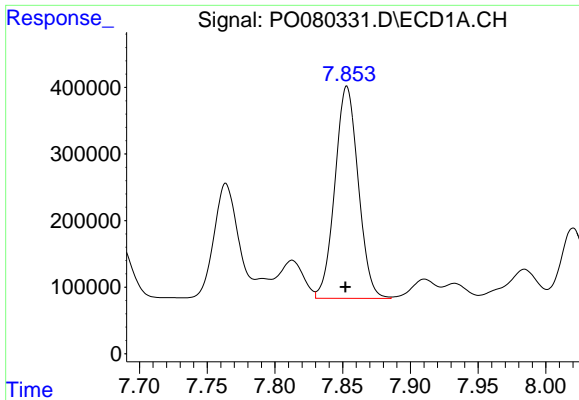
#27 AR-1254-2

R.T.: 7.470 min
 Delta R.T.: 0.002 min
 Response: 3593559
 Conc: 939.60 ng/ml



#27 AR-1254-2

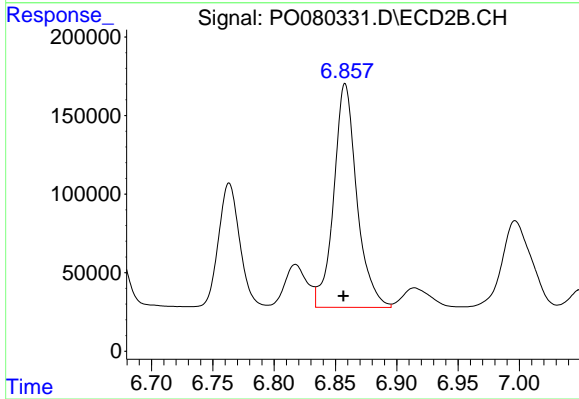
R.T.: 6.430 min
 Delta R.T.: 0.001 min
 Response: 1169548
 Conc: 905.07 ng/ml



#28 AR-1254-3

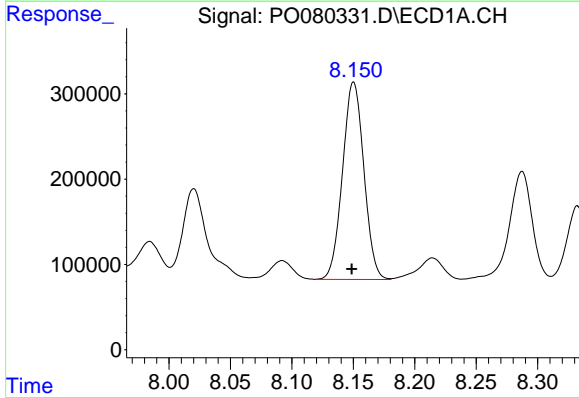
R.T.: 7.853 min
Delta R.T.: 0.001 min
Response: 3824244
Conc: 946.52 ng/ml

Instrument :
ECD_O
ClientSampled :
AR1254ICC1000



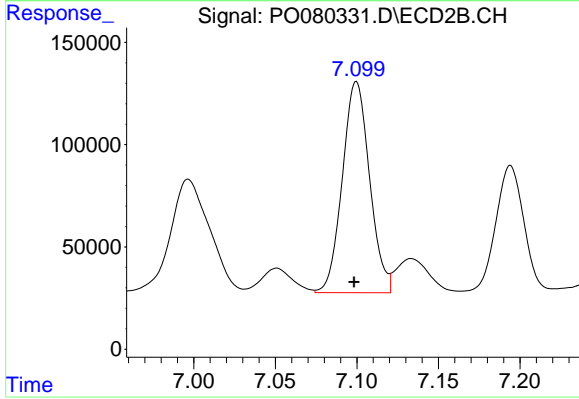
#28 AR-1254-3

R.T.: 6.858 min
Delta R.T.: 0.001 min
Response: 1867117
Conc: 927.20 ng/ml



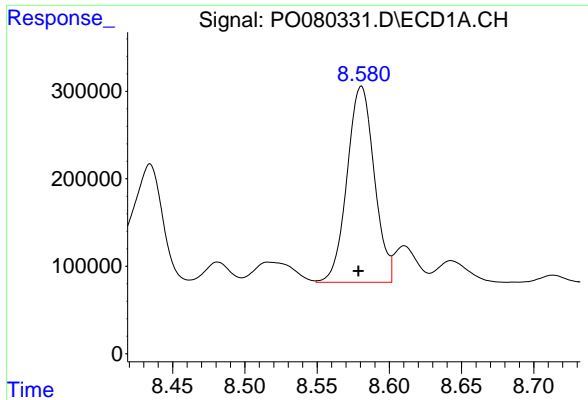
#29 AR-1254-4

R.T.: 8.150 min
Delta R.T.: 0.001 min
Response: 2799908
Conc: 946.70 ng/ml



#29 AR-1254-4

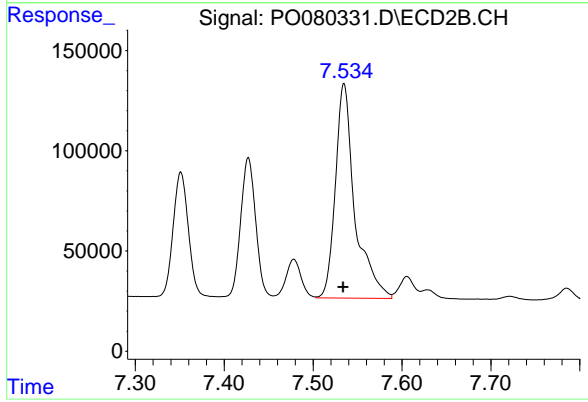
R.T.: 7.100 min
Delta R.T.: 0.001 min
Response: 1200727
Conc: 921.45 ng/ml



#30 AR-1254-5

R.T.: 8.581 min
Delta R.T.: 0.002 min
Response: 2931243
Conc: 947.78 ng/ml

Instrument :
ECD_O
ClientSampled :
AR1254ICC1000



#30 AR-1254-5

R.T.: 7.535 min
Delta R.T.: 0.001 min
Response: 1628905
Conc: 933.56 ng/ml