

Data Path : Z:\pestpcbsrv\HPCHEM1\ECD_0\Data\P0081023\
 Data File : P0096923.D
 Signal(s) : Signal #1: ECD1A.ch Signal #2: ECD2B.ch
 Acq On : 10 Aug 2023 15:35
 Operator : YP/AJ
 Sample : AR1248CCC500
 Misc :
 ALS Vial : 5 Sample Multiplier: 1

Instrument :
 ECD_0
 ClientSampleId :

Integration File signal 1: autoint1.e
 Integration File signal 2: autoint2.e
 Quant Time: Aug 10 21:44:55 2023
 Quant Method : Z:\pestpcbsrv\HPCHEM1\ECD_0\methods\P0080723.M
 Quant Title : GC EXTRACTABLES
 QLast Update : Tue Aug 08 04:34:41 2023
 Response via : Initial Calibration
 Integrator: ChemStation

Volume Inj. : 2 µl
 Signal #1 Phase : ZB-MR1 Signal #2 Phase: ZB-MR2
 Signal #1 Info : 30Mx0.32mmx 0.50µ Signal #2 Info : 30M x 0.32mm x 0.25µm

Compound	RT#1	RT#2	Resp#1	Resp#2	ng/ml	ng/ml
System Monitoring Compounds						
1) SA Tetrachlo...	4.413	3.619	166.4E6	68641743	50.280	51.852
2) SA Decachlor...	10.356	8.641	112.0E6	58376211	51.189	50.458
Target Compounds						
3) L1 AR-1016-1	5.599	4.705	30077314	14078841	319.348	317.549
4) L1 AR-1016-2	5.621	4.723	36071161	13690463	269.642	223.807
5) L1 AR-1016-3	5.685	4.901	17809502	9817856	204.657	300.530 #
6) L1 AR-1016-4	5.784	4.943	19744207	20785450	293.942	727.110 #
7) L1 AR-1016-5	6.087	5.157	49110507	25481335	703.418	662.775
8) L2 AR-1221-1	4.612	3.832	426205	278728	10.458	16.058 #
9) L2 AR-1221-2	4.722	3.919	2662506	984803	87.641	76.219
10) L2 AR-1221-3	4.789	3.994	2686808	1169058	30.695	29.452
11) L3 AR-1232-1	4.789	3.994	2686808	1169058	36.839	36.141
12) L3 AR-1232-2	5.326	4.723	15039173	13690463	379.337	474.498 #
13) L3 AR-1232-3	5.621	4.901	36071161	9817856	589.662	647.536
14) L3 AR-1232-4	5.784	4.985	19744207	21932324	647.058	1467.569 #
15) L3 AR-1232-5	5.878	5.157	46399143	25481335	1658.108	1558.799
16) L4 AR-1242-1	5.599	4.705	30077314	14078841	358.845	357.105
17) L4 AR-1242-2	5.621	4.723	36071161	13690463	306.306	251.243
18) L4 AR-1242-3	5.685	4.901	17809502	9817856	241.085	332.037 #
19) L4 AR-1242-4	5.784	4.985	19744207	21932324	331.666	695.957 #
20) L4 AR-1242-5	6.539	5.510	45022607	33451050	818.299	918.072
21) L5 AR-1248-1	5.599	4.705	30077314	14078841	513.317	501.696
22) L5 AR-1248-2	5.878	4.943	46399143	20785450	493.516	490.443
23) L5 AR-1248-3	6.087	4.985	49110507	21932324	502.107	499.996
24) L5 AR-1248-4	6.500	5.157	46438758	25481335	511.195	499.146
25) L5 AR-1248-5	6.539	5.551	45022607	23533686	511.121	503.374
26) L6 AR-1254-1	6.471	5.510	37297837	33451050	341.272	453.290 #
27) L6 AR-1254-2	6.700	5.658	47891604	11263180	297.044	170.964 #
28) L6 AR-1254-3	7.074	6.062	26163281	15961152	166.968	157.933
29) L6 AR-1254-4	7.367	6.292	15760419	10202750	156.325	176.290
30) L6 AR-1254-5	7.798	6.711	3863046	3206203	34.426	36.469
31) L7 AR-1260-1	7.244	6.207	3452743	7801122	27.471	110.862 #
32) L7 AR-1260-2	7.505	6.381	3542419	1415539	26.292	16.960 #
33) L7 AR-1260-3	7.875	6.535	902792	1659909	8.700	21.496 #
34) L7 AR-1260-4	8.095	7.009	2477203	209513	22.157	3.269 #
35) L7 AR-1260-5	8.420	7.252	160672	387675	0.765	2.796 #
36) L8 AR-1262-1	7.875	6.802	902792	110318	6.078	2.802 #
37) L8 AR-1262-2	8.420	7.009	160672	209513	0.694	2.583 #
38) L8 AR-1262-3	8.746	7.535	55990	182328	0.336	2.841 #
39) L8 AR-1262-4	8.836	7.599	574095	475136	7.874	4.183 #
40) L8 AR-1262-5	9.549	0.000	153720	0	1.846	N.D. #
41) L9 AR-1268-1	8.746	7.535	55990	182328	0.182	0.984 #

Data Path : Z:\pestpcbsrv\HPCHEM1\ECD_0\Data\P0081023\
 Data File : P0096923.D
 Signal(s) : Signal #1: ECD1A.ch Signal #2: ECD2B.ch
 Acq On : 10 Aug 2023 15:35
 Operator : YP/AJ
 Sample : AR1248CCC500
 Misc :
 ALS Vial : 5 Sample Multiplier: 1

Instrument :
 ECD_0
 ClientSampleId :

Integration File signal 1: autoint1.e
 Integration File signal 2: autoint2.e
 Quant Time: Aug 10 21:44:55 2023
 Quant Method : Z:\pestpcbsrv\HPCHEM1\ECD_0\methods\P0080723.M
 Quant Title : GC EXTRACTABLES
 QLast Update : Tue Aug 08 04:34:41 2023
 Response via : Initial Calibration
 Integrator: ChemStation

Volume Inj. : 2 µl
 Signal #1 Phase : ZB-MR1 Signal #2 Phase: ZB-MR2
 Signal #1 Info : 30Mx0.32mmx 0.50µ Signal #2 Info : 30M x 0.32mm x 0.25µm

	Compound	RT#1	RT#2	Resp#1	Resp#2	ng/ml	ng/ml
42)	L9 AR-1268-2	8.869	7.599	224876	475136	0.820	2.833 #
43)	L9 AR-1268-3	9.103	7.810	214639	238699	0.840	1.652 #
44)	L9 AR-1268-4	9.549	0.000	153720	0	1.658	N.D. #
45)	L9 AR-1268-5	10.000	8.388	867705	483560	1.074	1.163

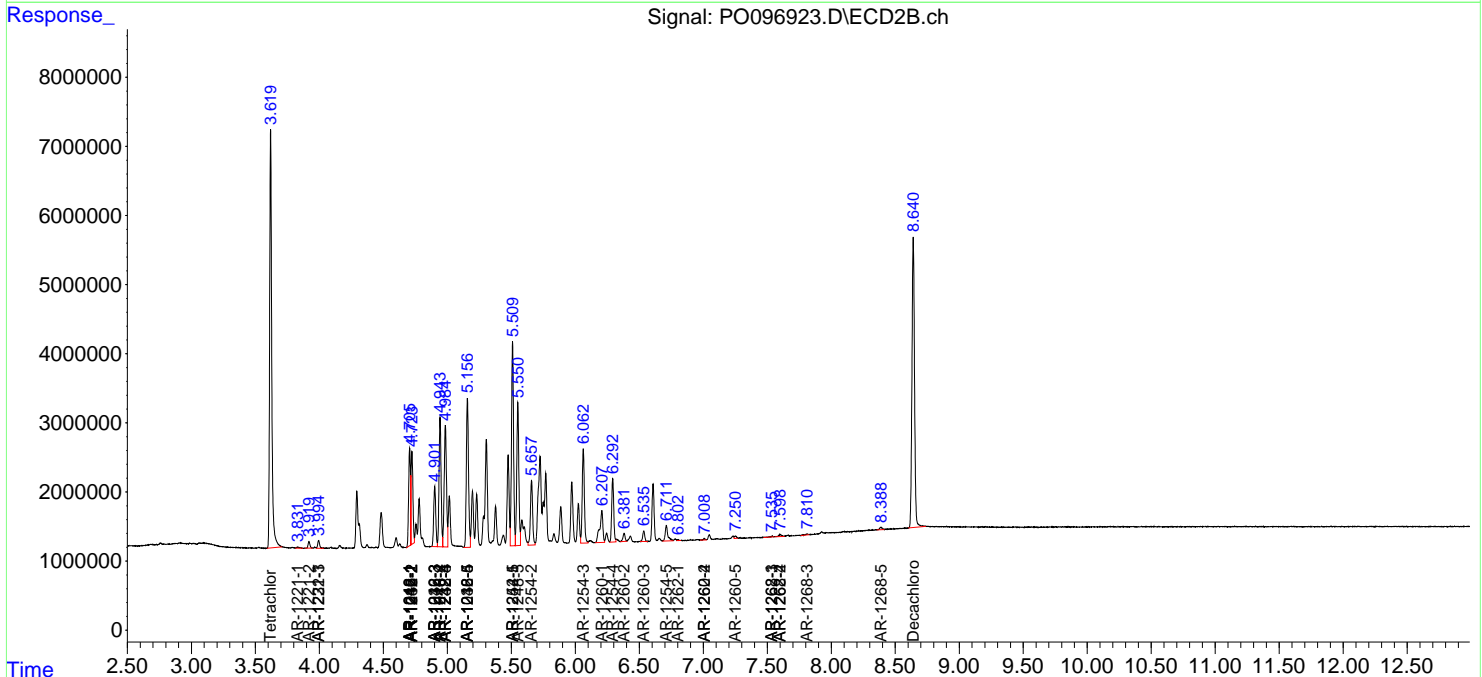
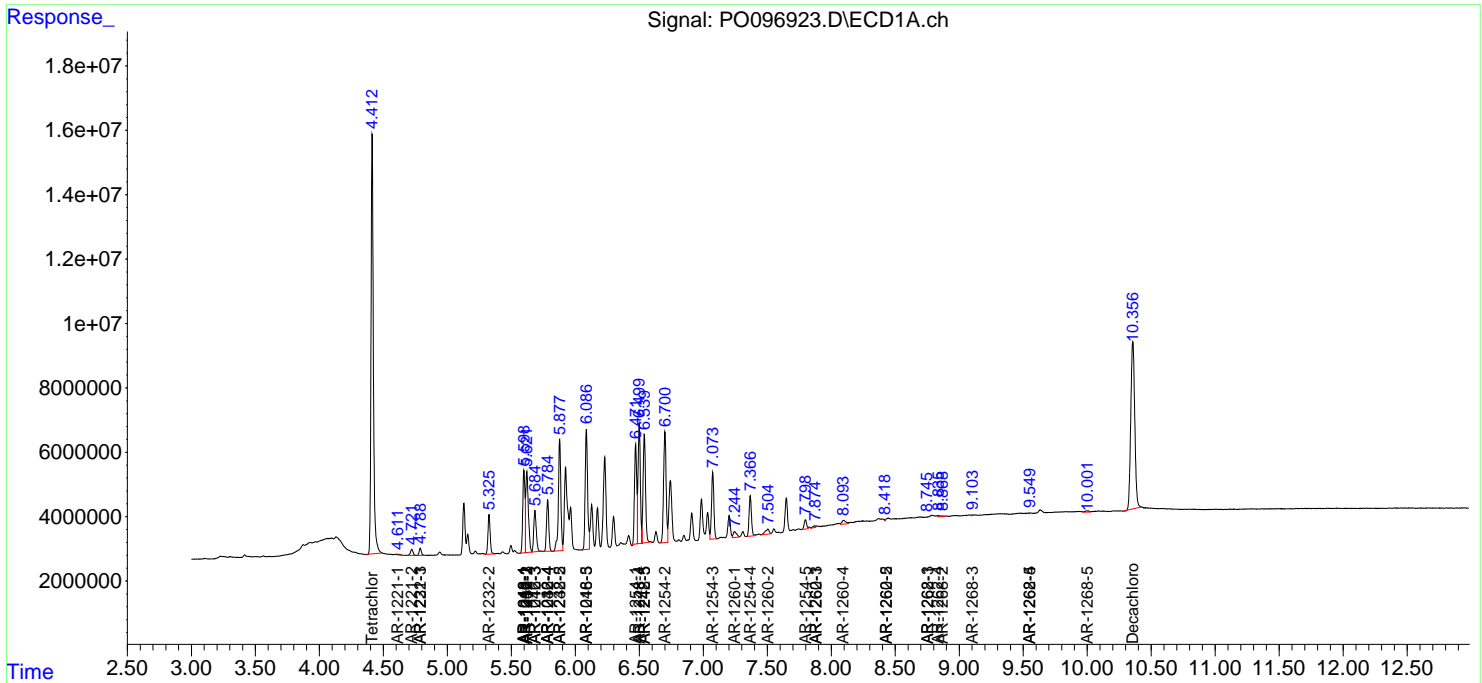
(f)=RT Delta > 1/2 Window (#)=Amounts differ by > 25% (m)=manual int.

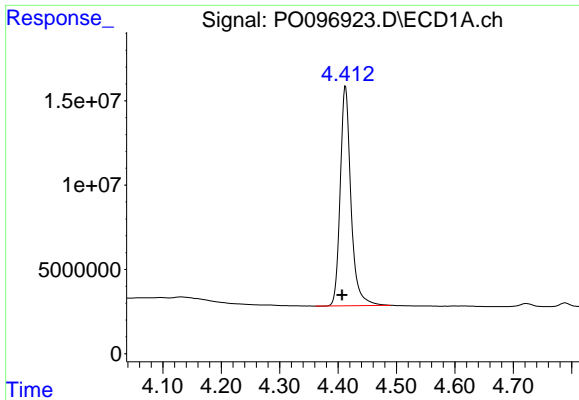
Data Path : Z:\pestpcbsrv\HPCHEM1\ECD_O\Data\PO081023\
 Data File : PO096923.D
 Signal(s) : Signal #1: ECD1A.ch Signal #2: ECD2B.ch
 Acq On : 10 Aug 2023 15:35
 Operator : YP/AJ
 Sample : AR1248CCC500
 Misc :
 ALS Vial : 5 Sample Multiplier: 1

Instrument :
 ECD_O
 ClientSampleId :

Integration File signal 1: autoint1.e
 Integration File signal 2: autoint2.e
 Quant Time: Aug 10 21:44:55 2023
 Quant Method : Z:\pestpcbsrv\HPCHEM1\ECD_O\methods\PO080723.M
 Quant Title : GC EXTRACTABLES
 QLast Update : Tue Aug 08 04:34:41 2023
 Response via : Initial Calibration
 Integrator: ChemStation

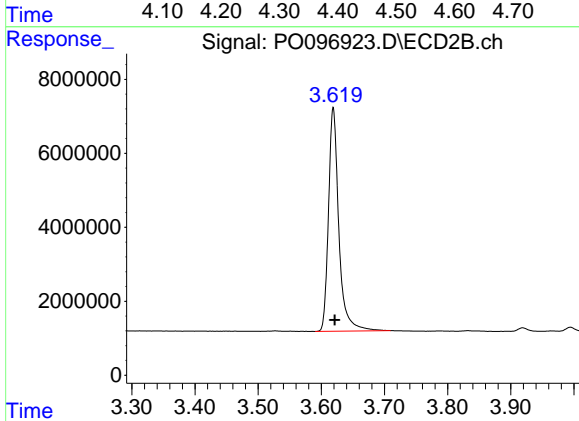
Volume Inj. : 2 µl
 Signal #1 Phase : ZB-MR1 Signal #2 Phase: ZB-MR2
 Signal #1 Info : 30Mx0.32mmx 0.50µ Signal #2 Info : 30M x 0.32mm x 0.25µm



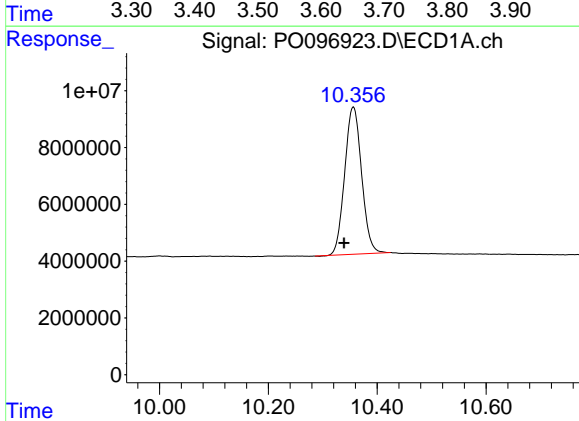


#1 Tetrachloro-m-xylene
 R.T.: 4.413 min
 Delta R.T.: 0.006 min
 Response: 166434995
 Conc: 50.28 ng/ml

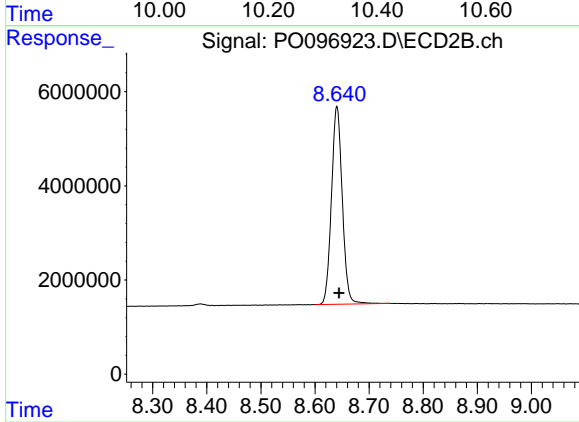
Instrument :
 ECD_O
 ClientSampleId :



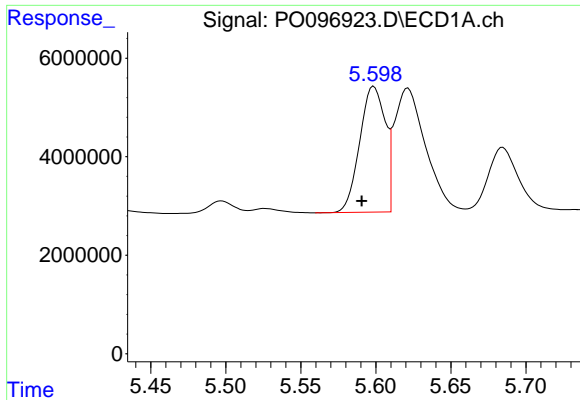
#1 Tetrachloro-m-xylene
 R.T.: 3.619 min
 Delta R.T.: -0.002 min
 Response: 68641743
 Conc: 51.85 ng/ml



#2 Decachlorobiphenyl
 R.T.: 10.356 min
 Delta R.T.: 0.017 min
 Response: 112010841
 Conc: 51.19 ng/ml



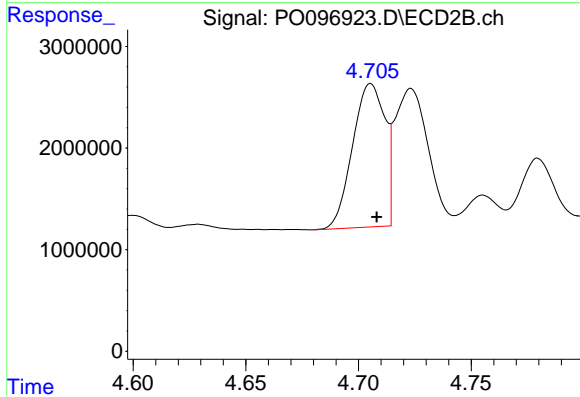
#2 Decachlorobiphenyl
 R.T.: 8.641 min
 Delta R.T.: -0.004 min
 Response: 58376211
 Conc: 50.46 ng/ml



#3 AR-1016-1

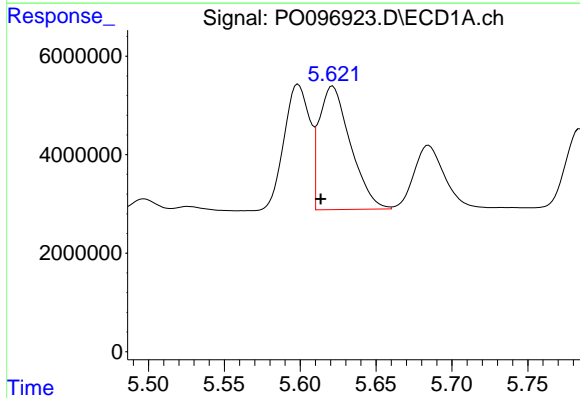
R.T.: 5.599 min
 Delta R.T.: 0.008 min
 Response: 30077314
 Conc: 319.35 ng/ml

Instrument :
 ECD_O
 ClientSampleId :



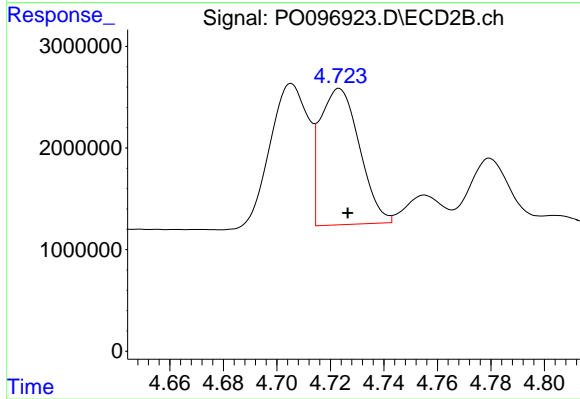
#3 AR-1016-1

R.T.: 4.705 min
 Delta R.T.: -0.003 min
 Response: 14078841
 Conc: 317.55 ng/ml



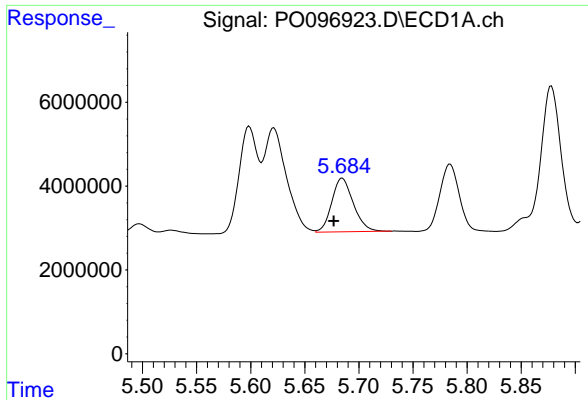
#4 AR-1016-2

R.T.: 5.621 min
 Delta R.T.: 0.008 min
 Response: 36071161
 Conc: 269.64 ng/ml



#4 AR-1016-2

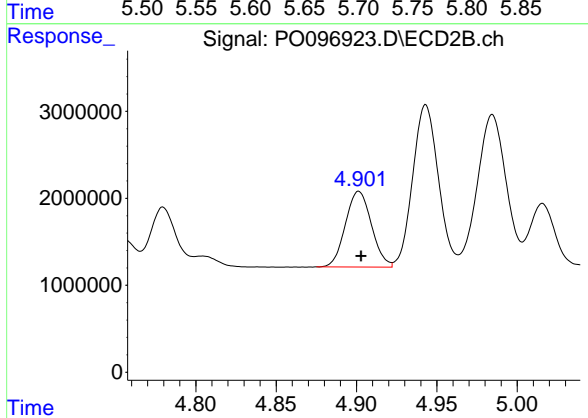
R.T.: 4.723 min
 Delta R.T.: -0.003 min
 Response: 13690463
 Conc: 223.81 ng/ml



#5 AR-1016-3

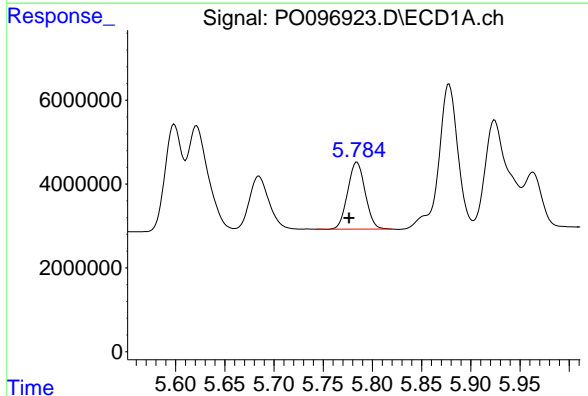
R.T.: 5.685 min
 Delta R.T.: 0.008 min
 Response: 17809502
 Conc: 204.66 ng/ml

Instrument :
 ECD_O
 ClientSampleId :



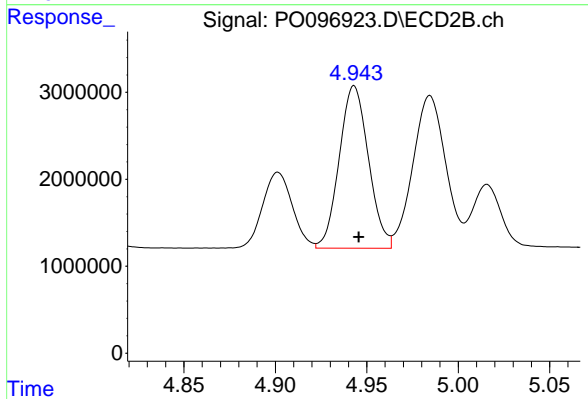
#5 AR-1016-3

R.T.: 4.901 min
 Delta R.T.: -0.001 min
 Response: 9817856
 Conc: 300.53 ng/ml



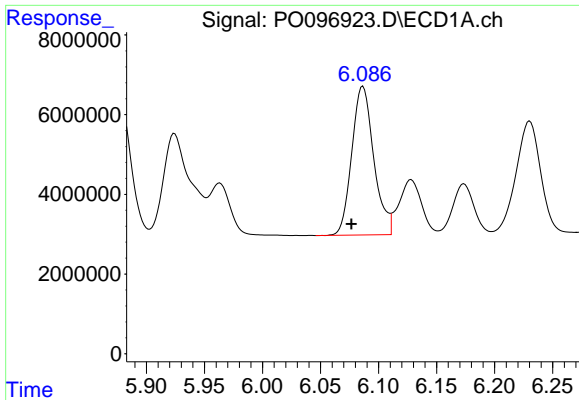
#6 AR-1016-4

R.T.: 5.784 min
 Delta R.T.: 0.008 min
 Response: 19744207
 Conc: 293.94 ng/ml



#6 AR-1016-4

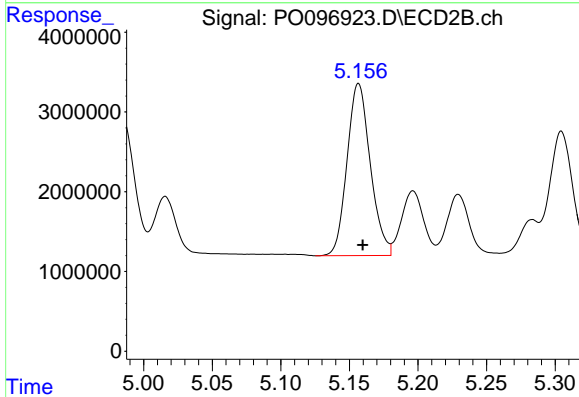
R.T.: 4.943 min
 Delta R.T.: -0.003 min
 Response: 20785450
 Conc: 727.11 ng/ml



#7 AR-1016-5

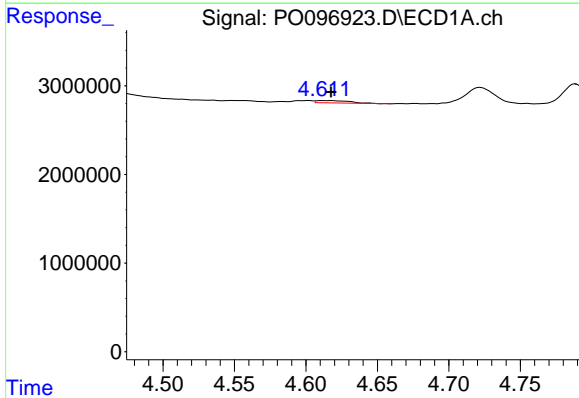
R.T.: 6.087 min
 Delta R.T.: 0.010 min
 Response: 49110507
 Conc: 703.42 ng/ml

Instrument :
 ECD_O
 ClientSampleId :



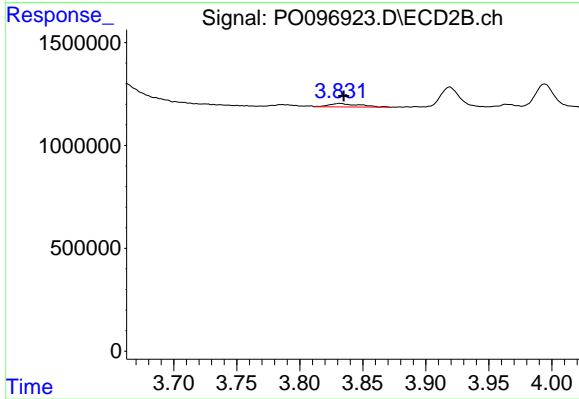
#7 AR-1016-5

R.T.: 5.157 min
 Delta R.T.: -0.003 min
 Response: 25481335
 Conc: 662.77 ng/ml



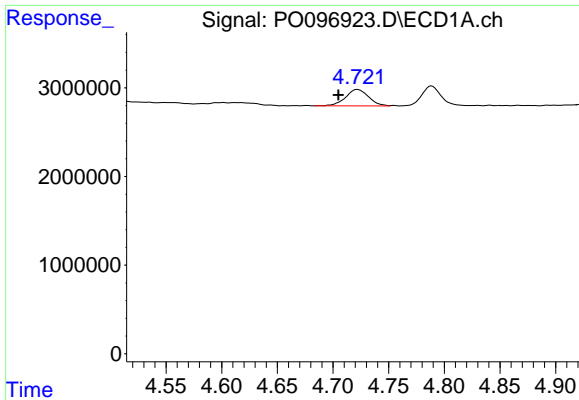
#8 AR-1221-1

R.T.: 4.612 min
 Delta R.T.: -0.006 min
 Response: 426205
 Conc: 10.46 ng/ml



#8 AR-1221-1

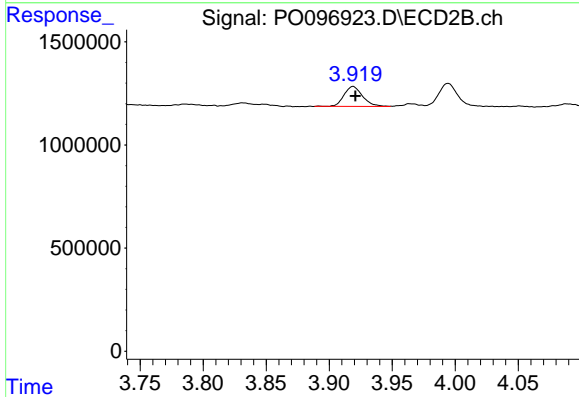
R.T.: 3.832 min
 Delta R.T.: -0.003 min
 Response: 278728
 Conc: 16.06 ng/ml



#9 AR-1221-2

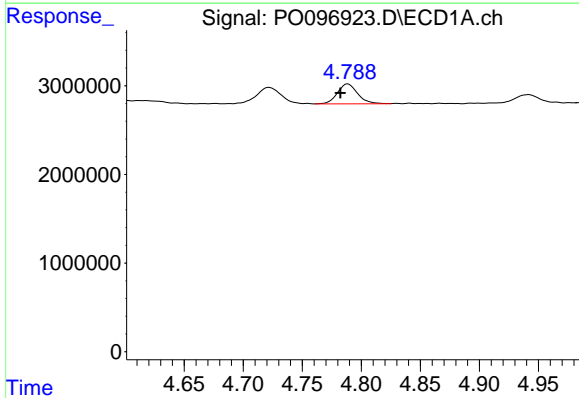
R.T.: 4.722 min
 Delta R.T.: 0.017 min
 Response: 2662506
 Conc: 87.64 ng/ml

Instrument :
 ECD_O
 ClientSampleId :



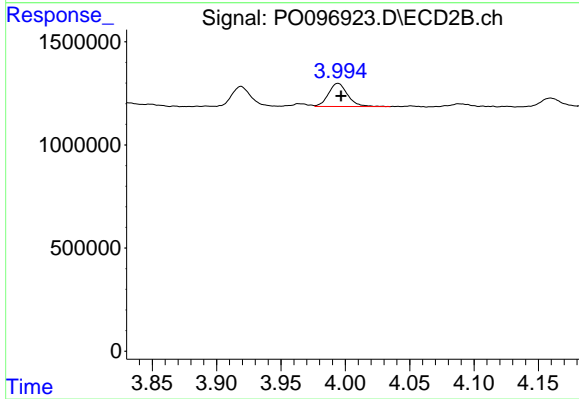
#9 AR-1221-2

R.T.: 3.919 min
 Delta R.T.: -0.002 min
 Response: 984803
 Conc: 76.22 ng/ml



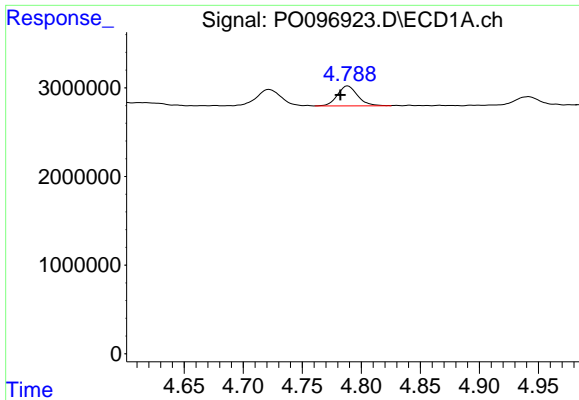
#10 AR-1221-3

R.T.: 4.789 min
 Delta R.T.: 0.006 min
 Response: 2686808
 Conc: 30.70 ng/ml



#10 AR-1221-3

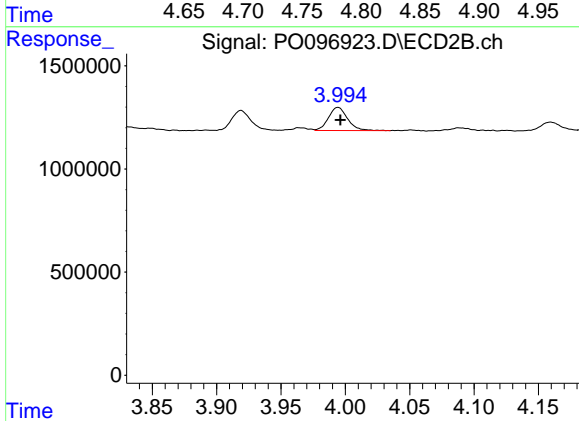
R.T.: 3.994 min
 Delta R.T.: -0.002 min
 Response: 1169058
 Conc: 29.45 ng/ml



#11 AR-1232-1

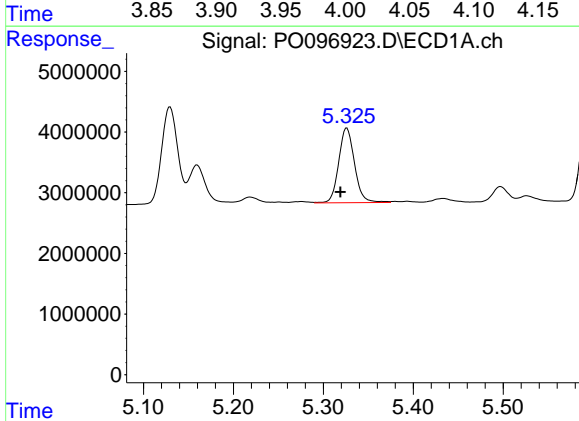
R.T.: 4.789 min
 Delta R.T.: 0.006 min
 Response: 2686808
 Conc: 36.84 ng/ml

Instrument :
 ECD_O
 ClientSampleId :



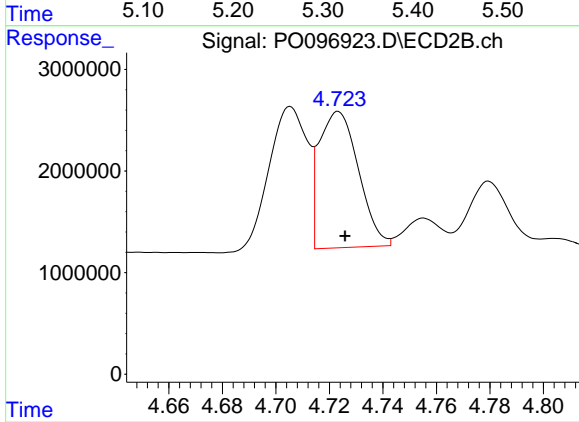
#11 AR-1232-1

R.T.: 3.994 min
 Delta R.T.: -0.002 min
 Response: 1169058
 Conc: 36.14 ng/ml



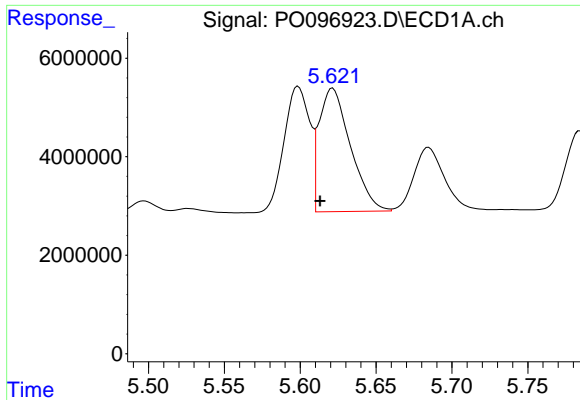
#12 AR-1232-2

R.T.: 5.326 min
 Delta R.T.: 0.007 min
 Response: 15039173
 Conc: 379.34 ng/ml



#12 AR-1232-2

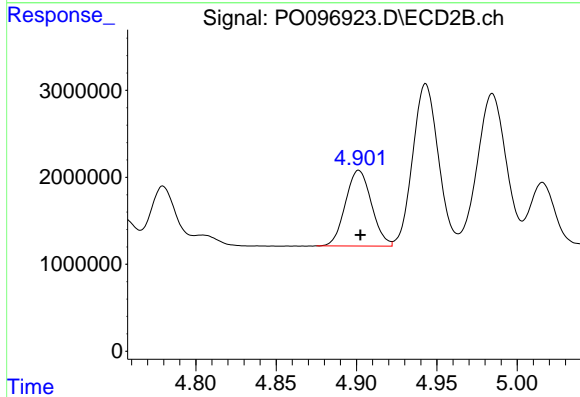
R.T.: 4.723 min
 Delta R.T.: -0.003 min
 Response: 13690463
 Conc: 474.50 ng/ml



#13 AR-1232-3

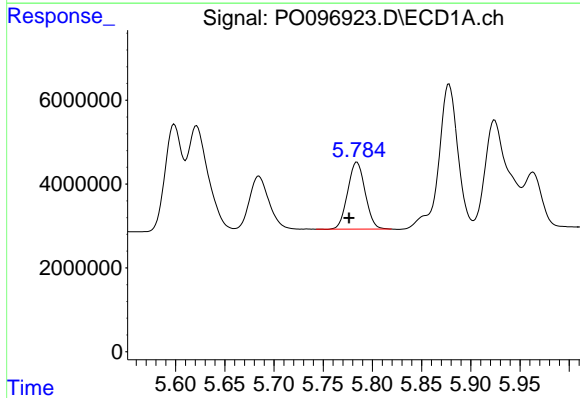
R.T.: 5.621 min
 Delta R.T.: 0.008 min
 Response: 36071161
 Conc: 589.66 ng/ml

Instrument :
 ECD_O
 ClientSampleId :



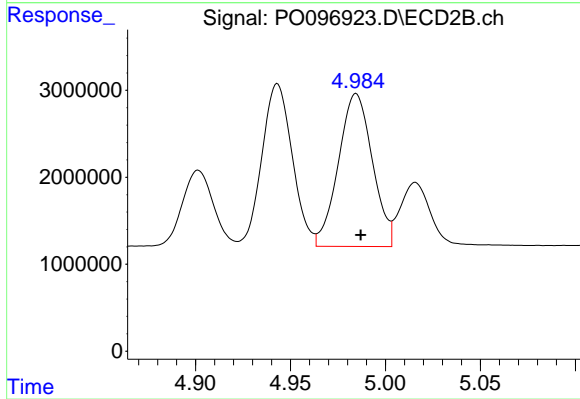
#13 AR-1232-3

R.T.: 4.901 min
 Delta R.T.: -0.001 min
 Response: 9817856
 Conc: 647.54 ng/ml



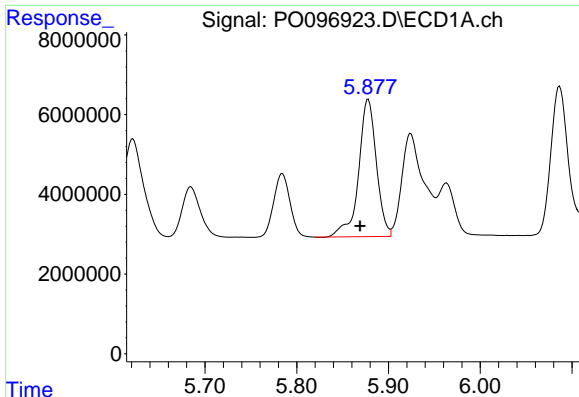
#14 AR-1232-4

R.T.: 5.784 min
 Delta R.T.: 0.008 min
 Response: 19744207
 Conc: 647.06 ng/ml



#14 AR-1232-4

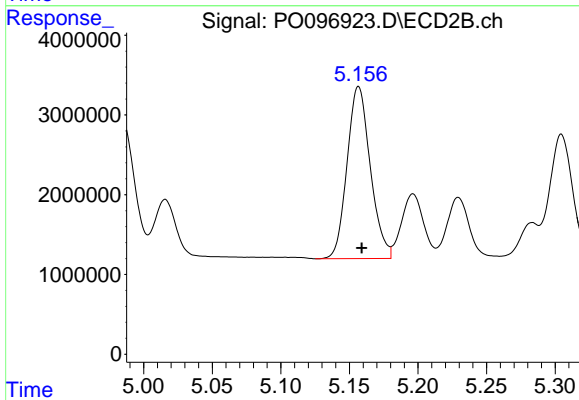
R.T.: 4.985 min
 Delta R.T.: -0.002 min
 Response: 21932324
 Conc: 1467.57 ng/ml



#15 AR-1232-5

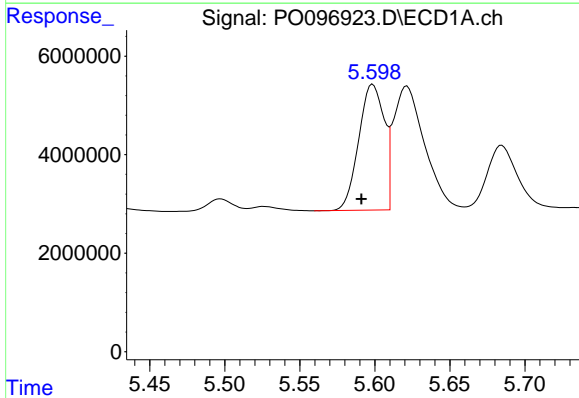
R.T.: 5.878 min
 Delta R.T.: 0.009 min
 Response: 46399143
 Conc: 1658.11 ng/ml

Instrument :
 ECD_O
 ClientSampleId :



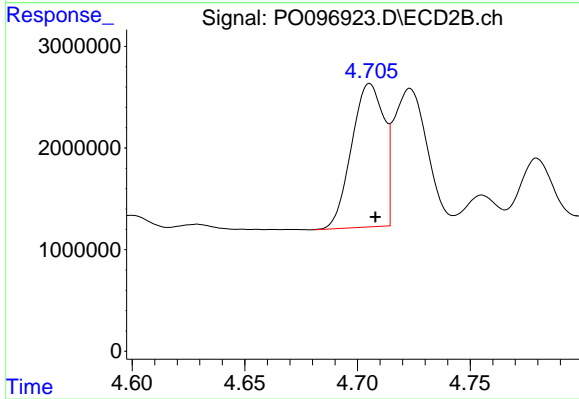
#15 AR-1232-5

R.T.: 5.157 min
 Delta R.T.: -0.002 min
 Response: 25481335
 Conc: 1558.80 ng/ml



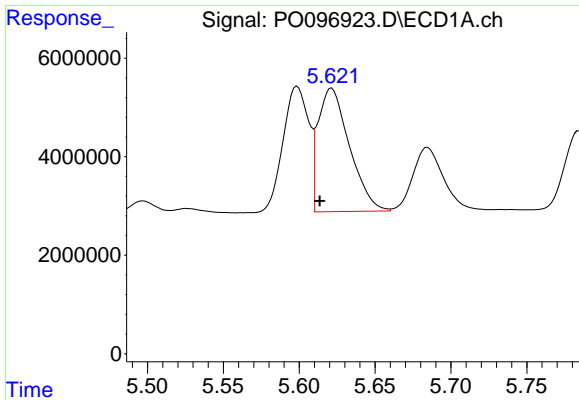
#16 AR-1242-1

R.T.: 5.599 min
 Delta R.T.: 0.008 min
 Response: 30077314
 Conc: 358.85 ng/ml



#16 AR-1242-1

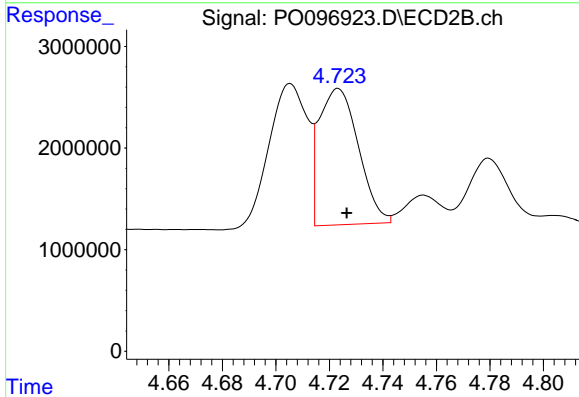
R.T.: 4.705 min
 Delta R.T.: -0.002 min
 Response: 14078841
 Conc: 357.10 ng/ml



#17 AR-1242-2

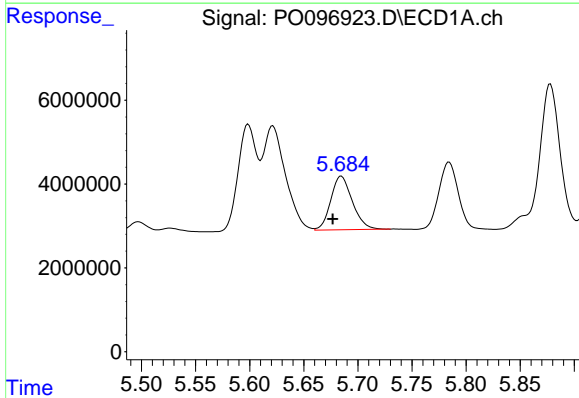
R.T.: 5.621 min
 Delta R.T.: 0.008 min
 Response: 36071161
 Conc: 306.31 ng/ml

Instrument :
 ECD_O
 ClientSampleId :



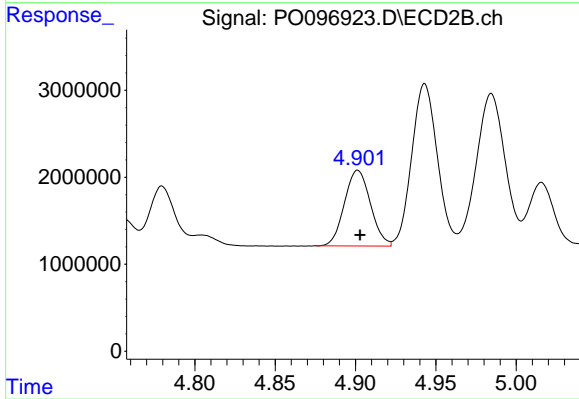
#17 AR-1242-2

R.T.: 4.723 min
 Delta R.T.: -0.003 min
 Response: 13690463
 Conc: 251.24 ng/ml



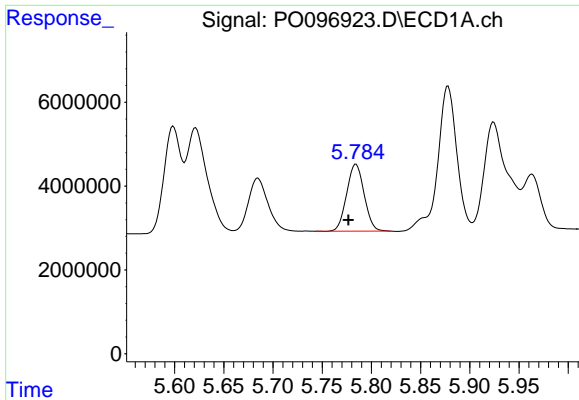
#18 AR-1242-3

R.T.: 5.685 min
 Delta R.T.: 0.008 min
 Response: 17809502
 Conc: 241.08 ng/ml



#18 AR-1242-3

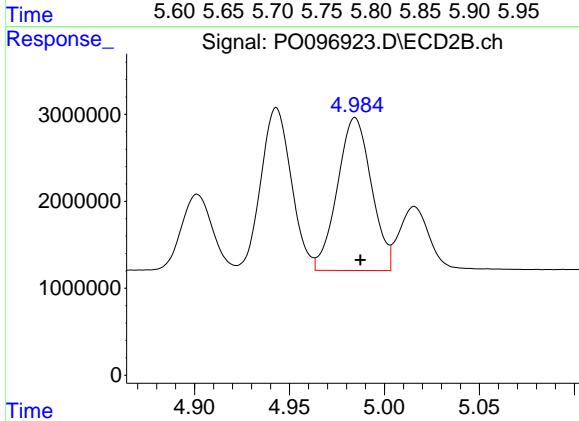
R.T.: 4.901 min
 Delta R.T.: -0.002 min
 Response: 9817856
 Conc: 332.04 ng/ml



#19 AR-1242-4

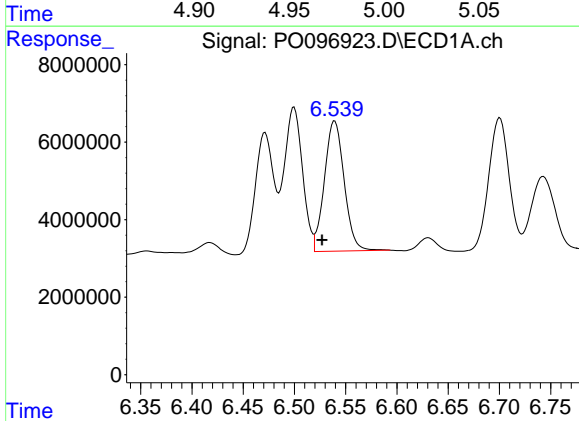
R.T.: 5.784 min
 Delta R.T.: 0.008 min
 Response: 19744207
 Conc: 331.67 ng/ml

Instrument :
 ECD_O
 ClientSampleId :



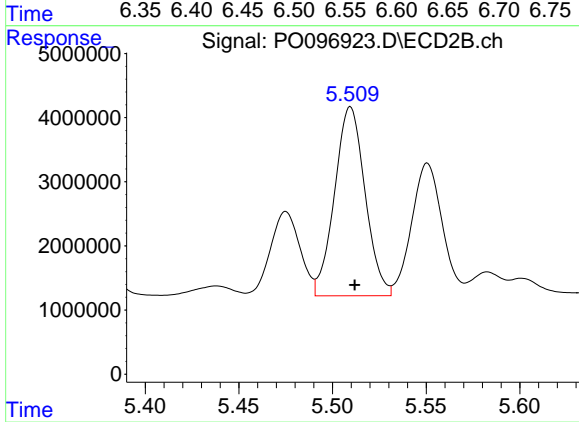
#19 AR-1242-4

R.T.: 4.985 min
 Delta R.T.: -0.003 min
 Response: 21932324
 Conc: 695.96 ng/ml



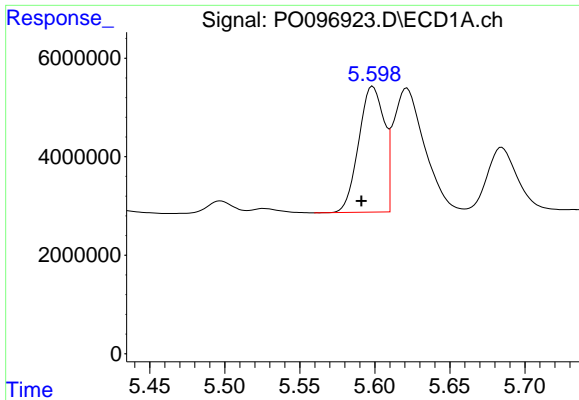
#20 AR-1242-5

R.T.: 6.539 min
 Delta R.T.: 0.012 min
 Response: 45022607
 Conc: 818.30 ng/ml



#20 AR-1242-5

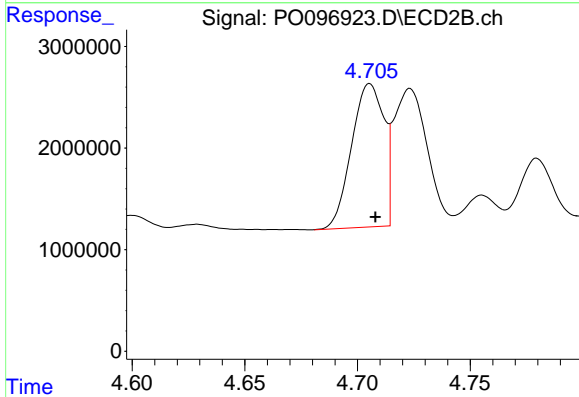
R.T.: 5.510 min
 Delta R.T.: -0.002 min
 Response: 33451050
 Conc: 918.07 ng/ml



#21 AR-1248-1

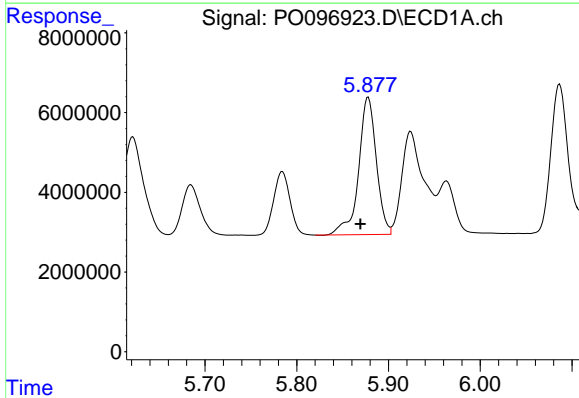
R.T.: 5.599 min
 Delta R.T.: 0.008 min
 Response: 30077314
 Conc: 513.32 ng/ml

Instrument :
 ECD_O
 ClientSampleId :



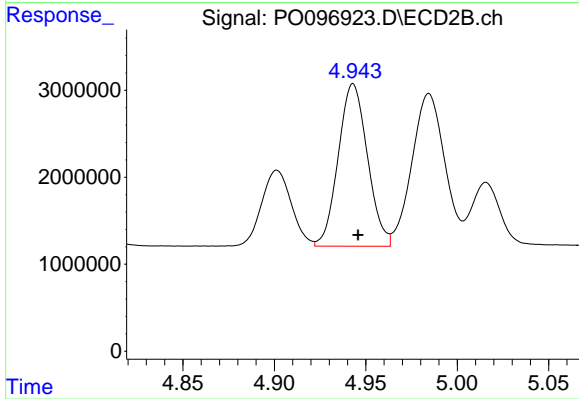
#21 AR-1248-1

R.T.: 4.705 min
 Delta R.T.: -0.003 min
 Response: 14078841
 Conc: 501.70 ng/ml



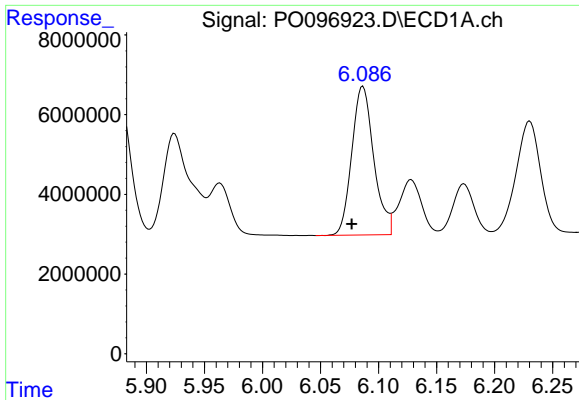
#22 AR-1248-2

R.T.: 5.878 min
 Delta R.T.: 0.008 min
 Response: 46399143
 Conc: 493.52 ng/ml



#22 AR-1248-2

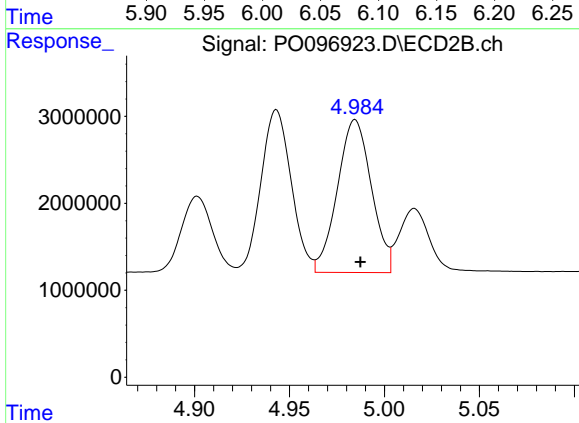
R.T.: 4.943 min
 Delta R.T.: -0.003 min
 Response: 20785450
 Conc: 490.44 ng/ml



#23 AR-1248-3

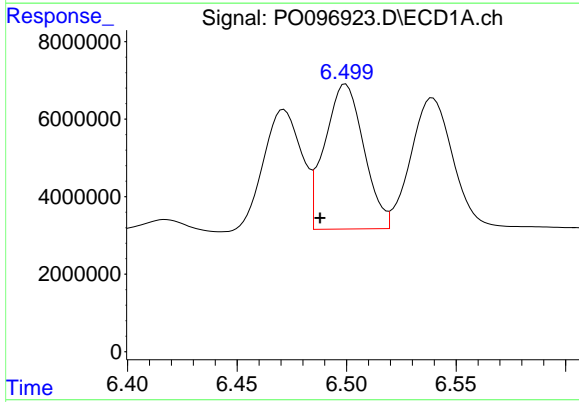
R.T.: 6.087 min
 Delta R.T.: 0.010 min
 Response: 49110507
 Conc: 502.11 ng/ml

Instrument :
 ECD_O
 ClientSampleId :



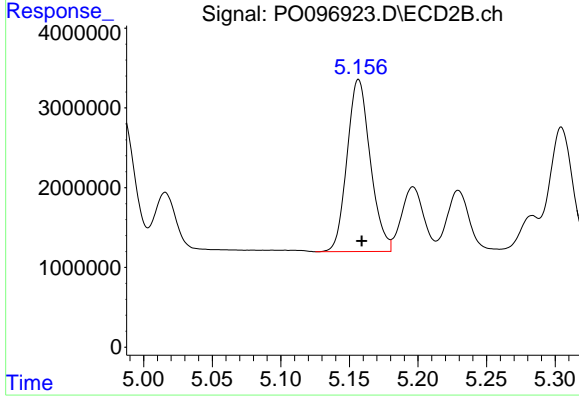
#23 AR-1248-3

R.T.: 4.985 min
 Delta R.T.: -0.003 min
 Response: 21932324
 Conc: 500.00 ng/ml



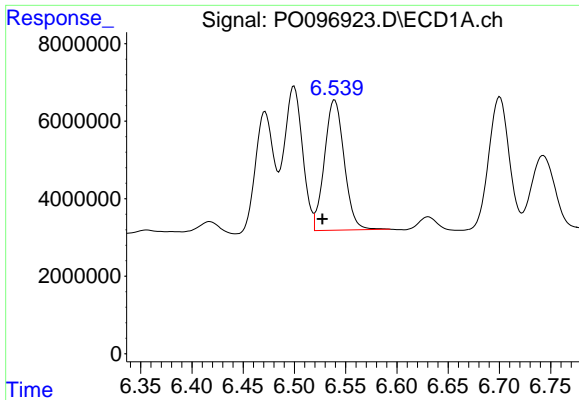
#24 AR-1248-4

R.T.: 6.500 min
 Delta R.T.: 0.012 min
 Response: 46438758
 Conc: 511.20 ng/ml



#24 AR-1248-4

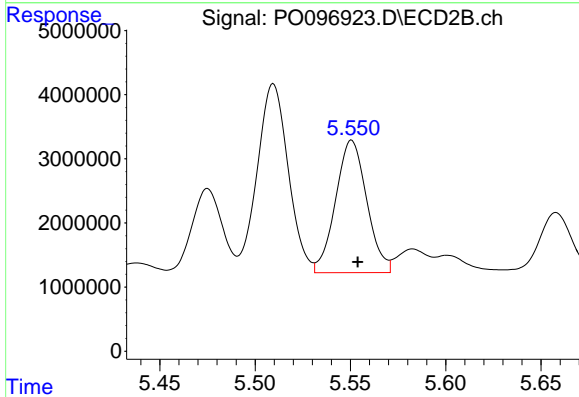
R.T.: 5.157 min
 Delta R.T.: -0.002 min
 Response: 25481335
 Conc: 499.15 ng/ml



#25 AR-1248-5

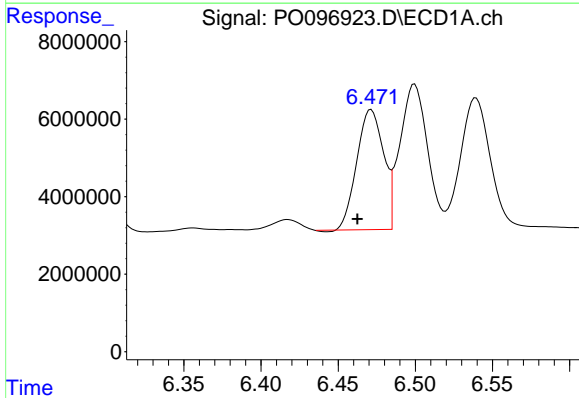
R.T.: 6.539 min
 Delta R.T.: 0.012 min
 Response: 45022607
 Conc: 511.12 ng/ml

Instrument :
 ECD_O
 ClientSampleId :



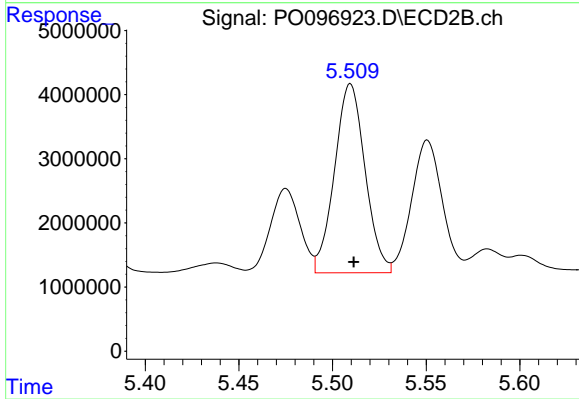
#25 AR-1248-5

R.T.: 5.551 min
 Delta R.T.: -0.003 min
 Response: 23533686
 Conc: 503.37 ng/ml



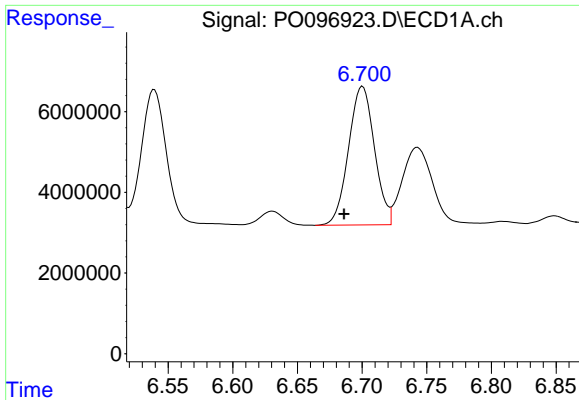
#26 AR-1254-1

R.T.: 6.471 min
 Delta R.T.: 0.009 min
 Response: 37297837
 Conc: 341.27 ng/ml



#26 AR-1254-1

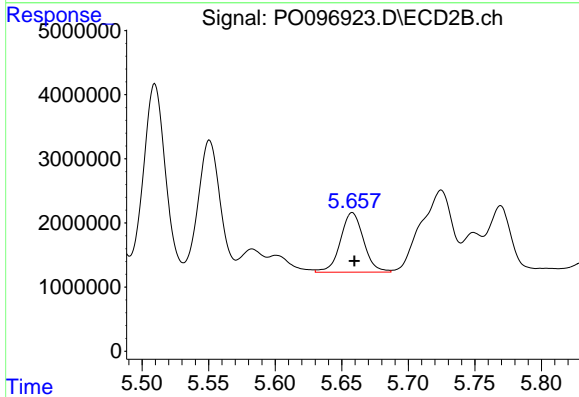
R.T.: 5.510 min
 Delta R.T.: -0.002 min
 Response: 33451050
 Conc: 453.29 ng/ml



#27 AR-1254-2

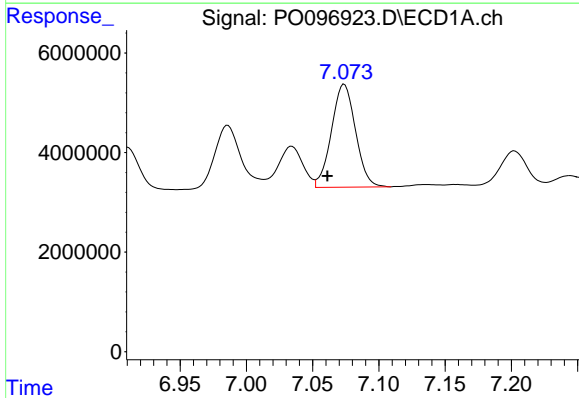
R.T.: 6.700 min
 Delta R.T.: 0.014 min
 Response: 47891604
 Conc: 297.04 ng/ml

Instrument :
 ECD_O
 ClientSampleId :



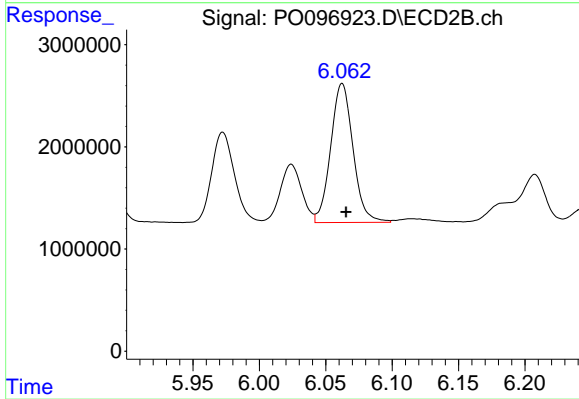
#27 AR-1254-2

R.T.: 5.658 min
 Delta R.T.: -0.002 min
 Response: 11263180
 Conc: 170.96 ng/ml



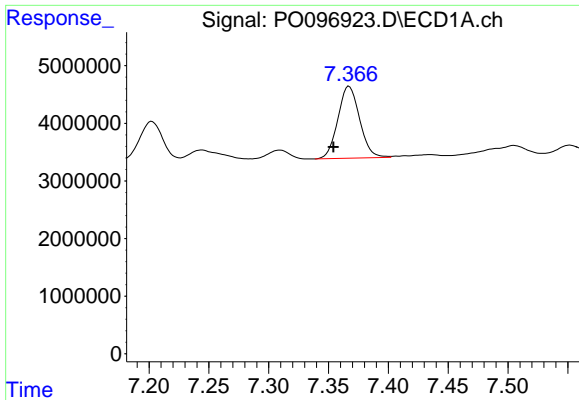
#28 AR-1254-3

R.T.: 7.074 min
 Delta R.T.: 0.013 min
 Response: 26163281
 Conc: 166.97 ng/ml



#28 AR-1254-3

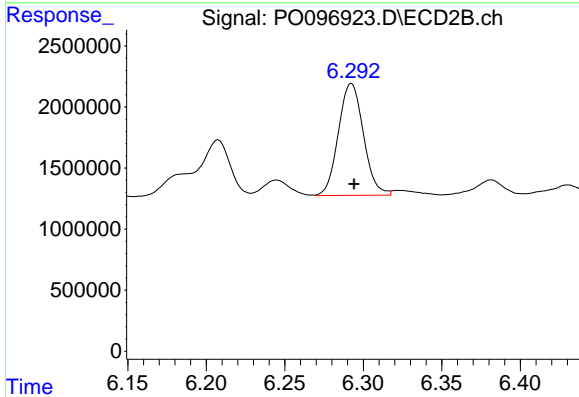
R.T.: 6.062 min
 Delta R.T.: -0.003 min
 Response: 15961152
 Conc: 157.93 ng/ml



#29 AR-1254-4

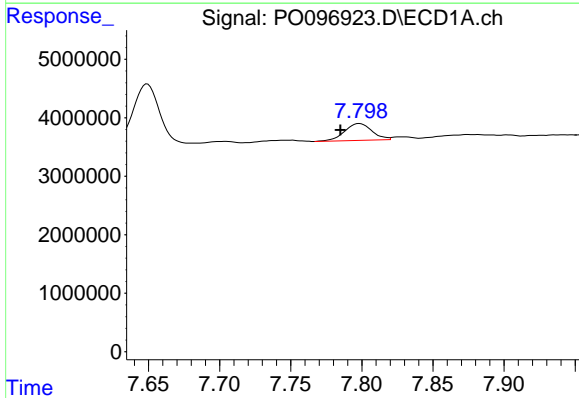
R.T.: 7.367 min
 Delta R.T.: 0.013 min
 Response: 15760419
 Conc: 156.33 ng/ml

Instrument :
 ECD_O
 ClientSampleId :



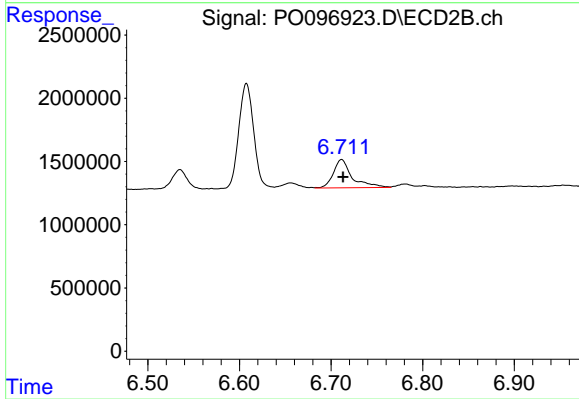
#29 AR-1254-4

R.T.: 6.292 min
 Delta R.T.: -0.002 min
 Response: 10202750
 Conc: 176.29 ng/ml



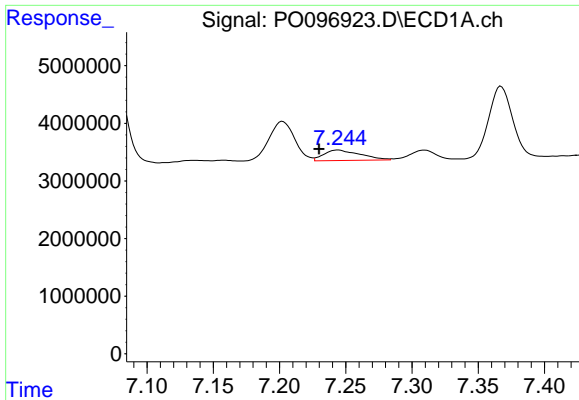
#30 AR-1254-5

R.T.: 7.798 min
 Delta R.T.: 0.013 min
 Response: 3863046
 Conc: 34.43 ng/ml



#30 AR-1254-5

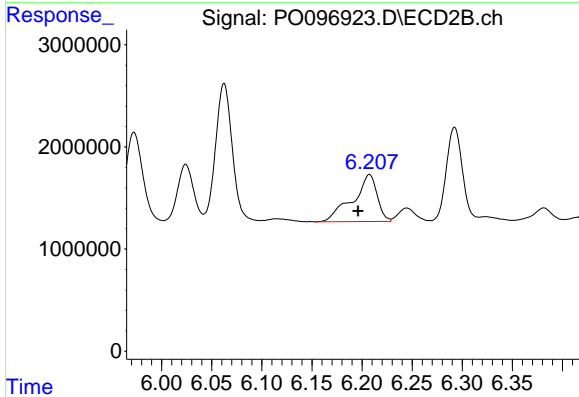
R.T.: 6.711 min
 Delta R.T.: -0.002 min
 Response: 3206203
 Conc: 36.47 ng/ml



#31 AR-1260-1

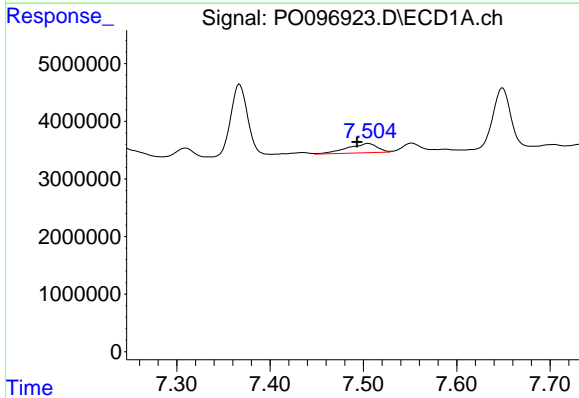
R.T.: 7.244 min
 Delta R.T.: 0.014 min
 Response: 3452743
 Conc: 27.47 ng/ml

Instrument :
 ECD_O
 ClientSampleId :



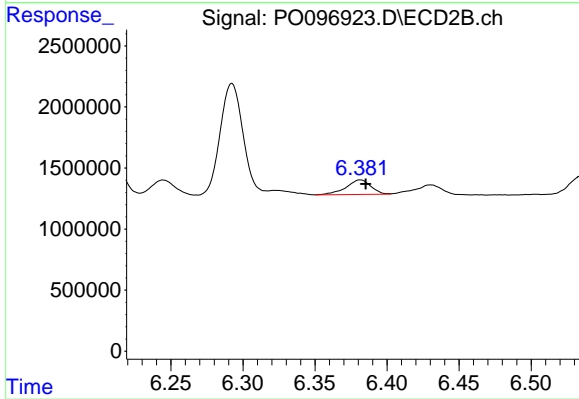
#31 AR-1260-1

R.T.: 6.207 min
 Delta R.T.: 0.011 min
 Response: 7801122
 Conc: 110.86 ng/ml



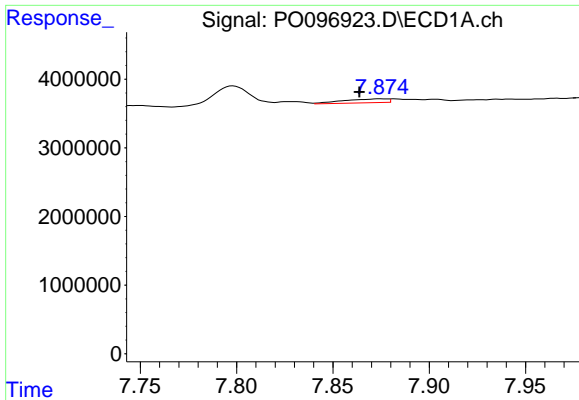
#32 AR-1260-2

R.T.: 7.505 min
 Delta R.T.: 0.012 min
 Response: 3542419
 Conc: 26.29 ng/ml



#32 AR-1260-2

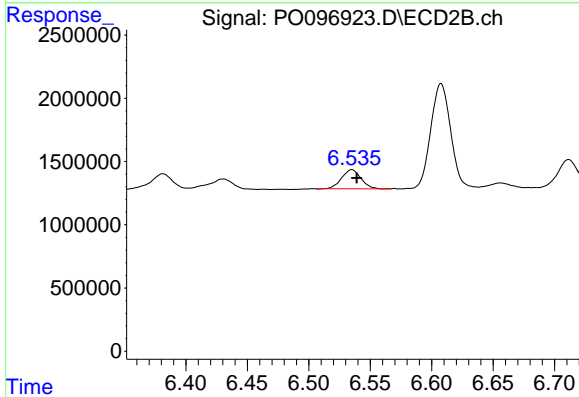
R.T.: 6.381 min
 Delta R.T.: -0.004 min
 Response: 1415539
 Conc: 16.96 ng/ml



#33 AR-1260-3

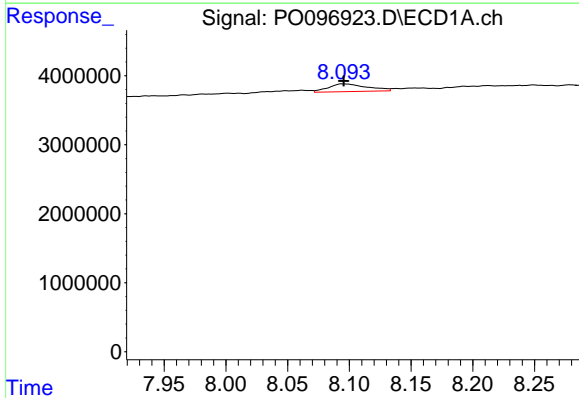
R.T.: 7.875 min
 Delta R.T.: 0.011 min
 Response: 902792
 Conc: 8.70 ng/ml

Instrument :
 ECD_O
 ClientSampleId :



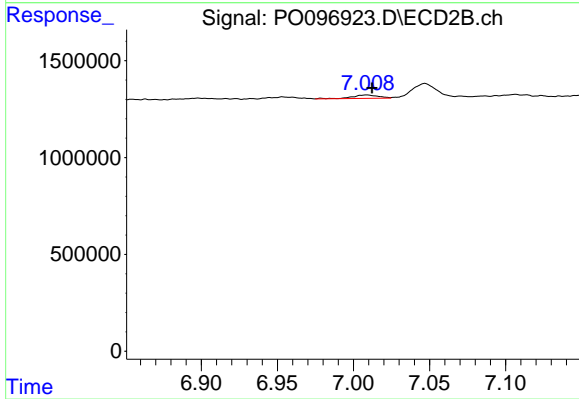
#33 AR-1260-3

R.T.: 6.535 min
 Delta R.T.: -0.004 min
 Response: 1659909
 Conc: 21.50 ng/ml



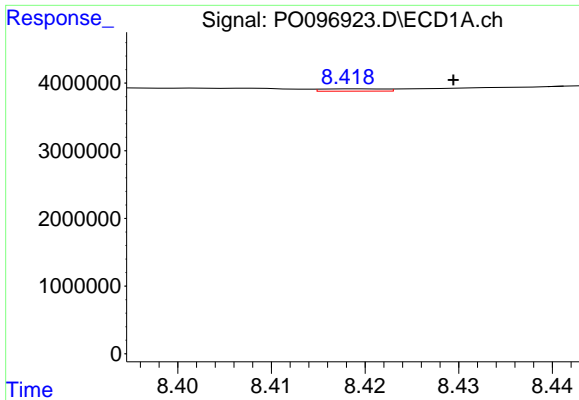
#34 AR-1260-4

R.T.: 8.095 min
 Delta R.T.: 0.000 min
 Response: 2477203
 Conc: 22.16 ng/ml



#34 AR-1260-4

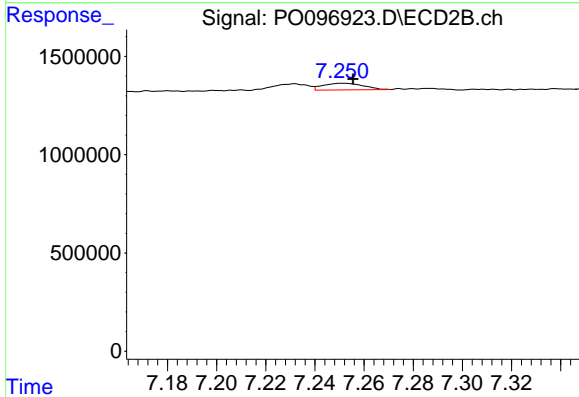
R.T.: 7.009 min
 Delta R.T.: -0.003 min
 Response: 209513
 Conc: 3.27 ng/ml



#35 AR-1260-5

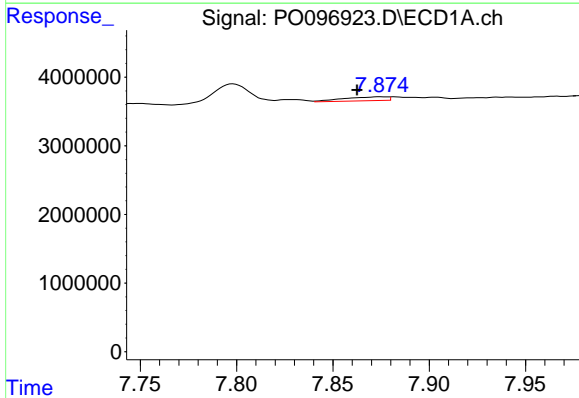
R.T.: 8.420 min
 Delta R.T.: -0.010 min
 Response: 160672
 Conc: 0.77 ng/ml

Instrument :
 ECD_O
 ClientSampleId :



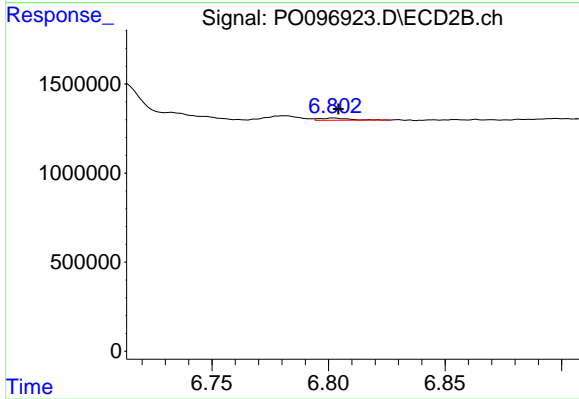
#35 AR-1260-5

R.T.: 7.252 min
 Delta R.T.: -0.004 min
 Response: 387675
 Conc: 2.80 ng/ml



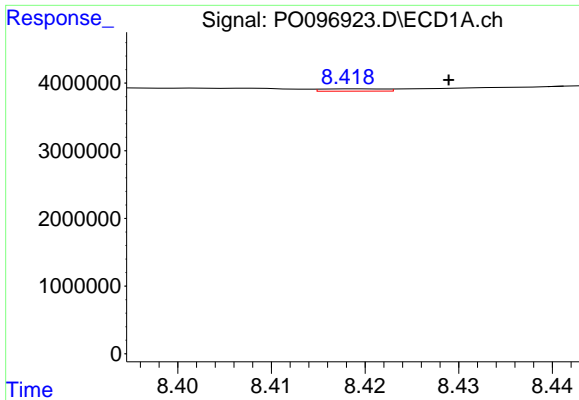
#36 AR-1262-1

R.T.: 7.875 min
 Delta R.T.: 0.012 min
 Response: 902792
 Conc: 6.08 ng/ml



#36 AR-1262-1

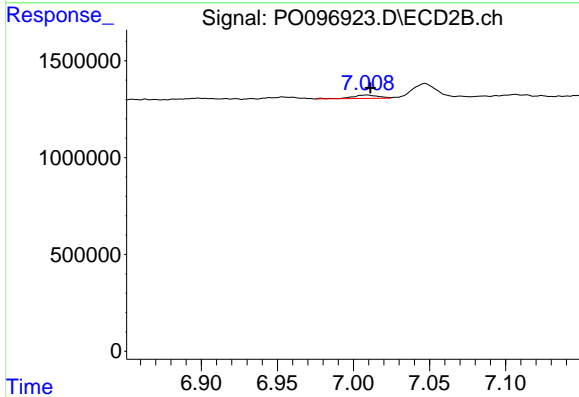
R.T.: 6.802 min
 Delta R.T.: -0.002 min
 Response: 110318
 Conc: 2.80 ng/ml



#37 AR-1262-2

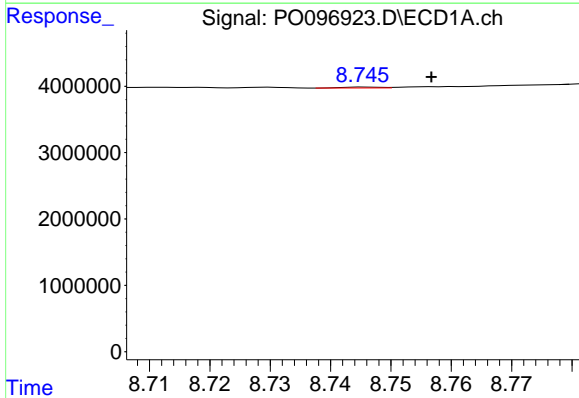
R.T.: 8.420 min
 Delta R.T.: -0.009 min
 Response: 160672
 Conc: 0.69 ng/ml

Instrument :
 ECD_O
 ClientSampleId :



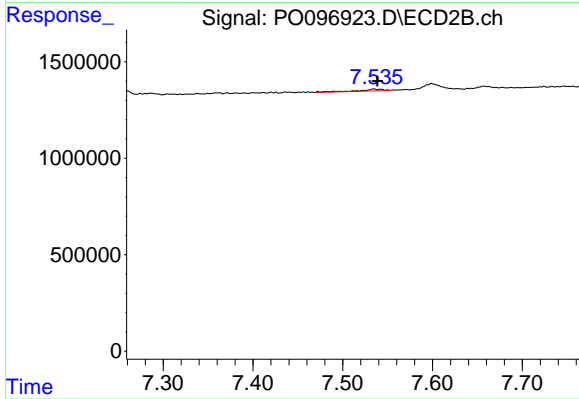
#37 AR-1262-2

R.T.: 7.009 min
 Delta R.T.: -0.002 min
 Response: 209513
 Conc: 2.58 ng/ml



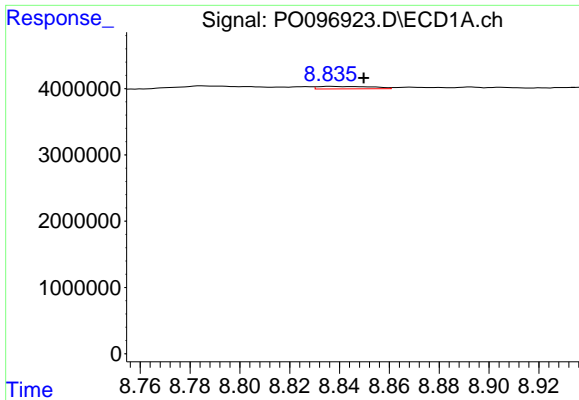
#38 AR-1262-3

R.T.: 8.746 min
 Delta R.T.: -0.011 min
 Response: 55990
 Conc: 0.34 ng/ml



#38 AR-1262-3

R.T.: 7.535 min
 Delta R.T.: -0.004 min
 Response: 182328
 Conc: 2.84 ng/ml

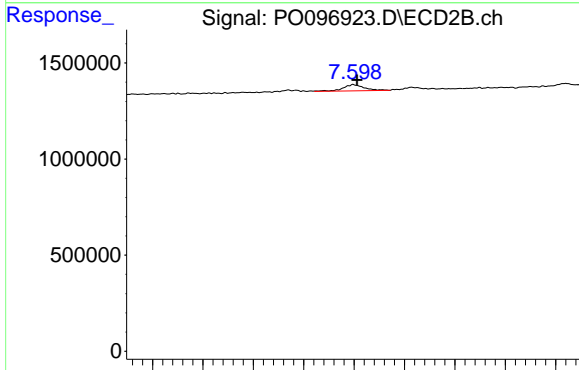


#39 AR-1262-4

R.T.: 8.836 min
 Delta R.T.: -0.013 min
 Response: 574095
 Conc: 7.87 ng/ml

Instrument :
 ECD_O
 ClientSampleId :

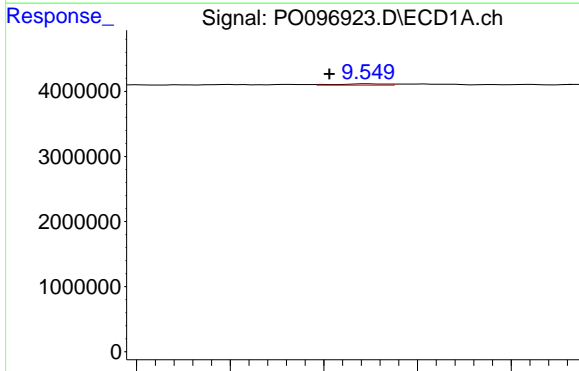
Time 8.76 8.78 8.80 8.82 8.84 8.86 8.88 8.90 8.92



#39 AR-1262-4

R.T.: 7.599 min
 Delta R.T.: -0.004 min
 Response: 475136
 Conc: 4.18 ng/ml

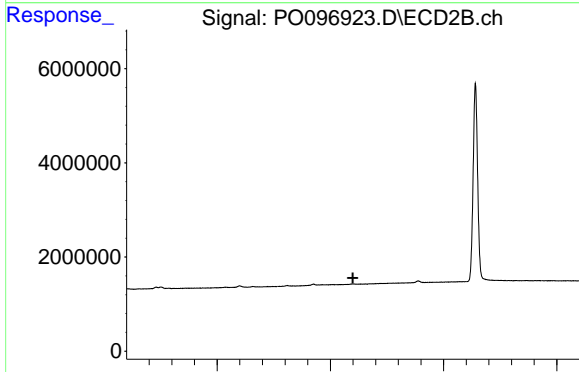
Time 7.40 7.45 7.50 7.55 7.60 7.65 7.70 7.75 7.80



#40 AR-1262-5

R.T.: 9.549 min
 Delta R.T.: 0.008 min
 Response: 153720
 Conc: 1.85 ng/ml

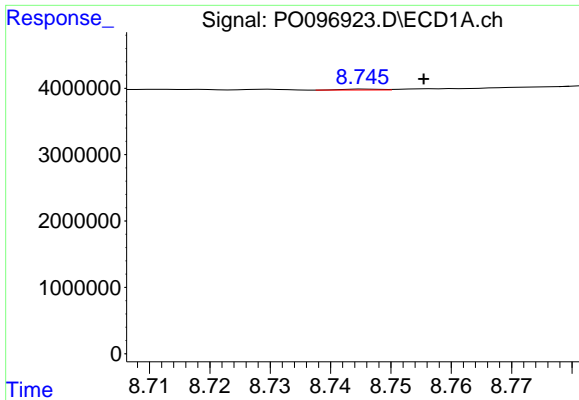
Time 9.50 9.52 9.54 9.56 9.58



#40 AR-1262-5

R.T.: 0.000 min
 Exp R.T.: 8.099 min
 Response: 0
 Conc: N.D.

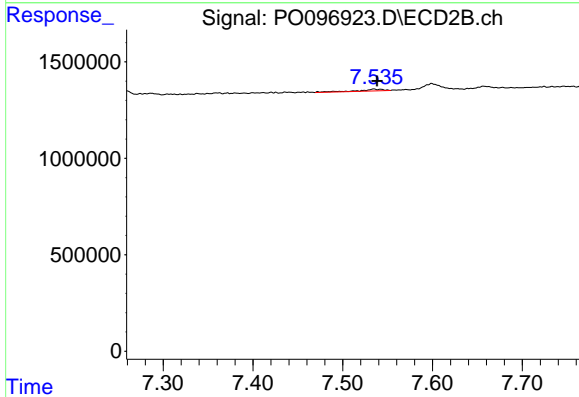
Time 7.50 8.00 8.50 9.00



#41 AR-1268-1

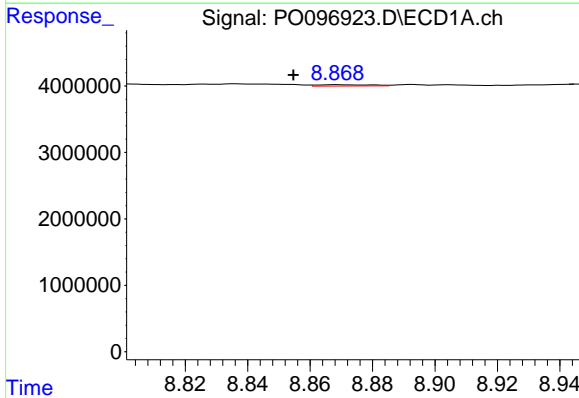
R.T.: 8.746 min
 Delta R.T.: -0.010 min
 Response: 55990
 Conc: 0.18 ng/ml

Instrument :
 ECD_O
 ClientSampleId :



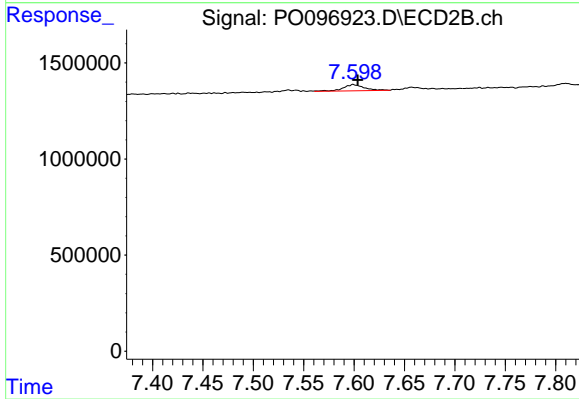
#41 AR-1268-1

R.T.: 7.535 min
 Delta R.T.: -0.004 min
 Response: 182328
 Conc: 0.98 ng/ml



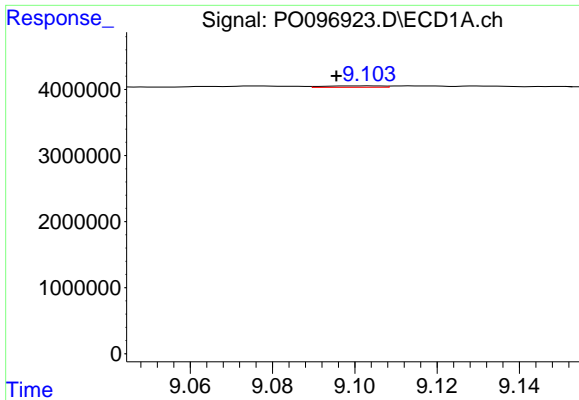
#42 AR-1268-2

R.T.: 8.869 min
 Delta R.T.: 0.014 min
 Response: 224876
 Conc: 0.82 ng/ml



#42 AR-1268-2

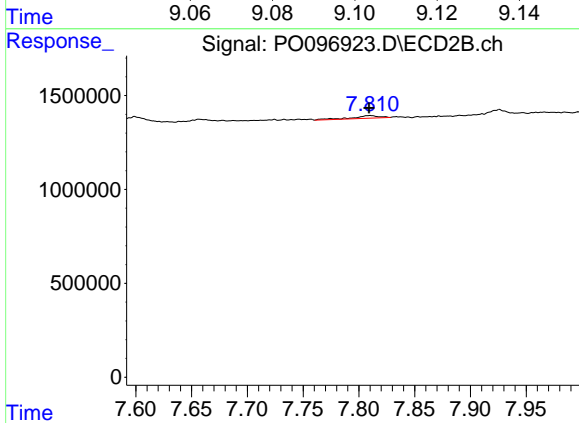
R.T.: 7.599 min
 Delta R.T.: -0.004 min
 Response: 475136
 Conc: 2.83 ng/ml



#43 AR-1268-3

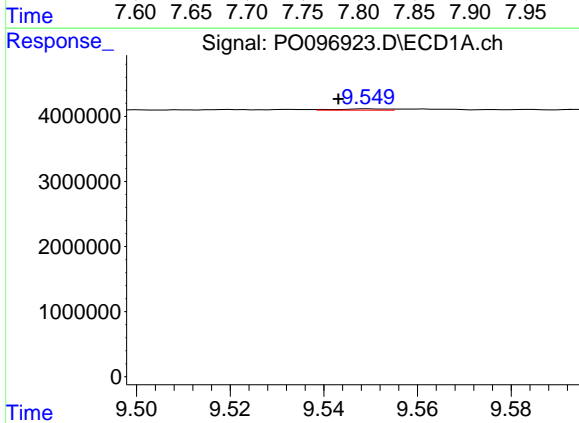
R.T.: 9.103 min
 Delta R.T.: 0.008 min
 Response: 214639
 Conc: 0.84 ng/ml

Instrument :
 ECD_O
 ClientSampleId :



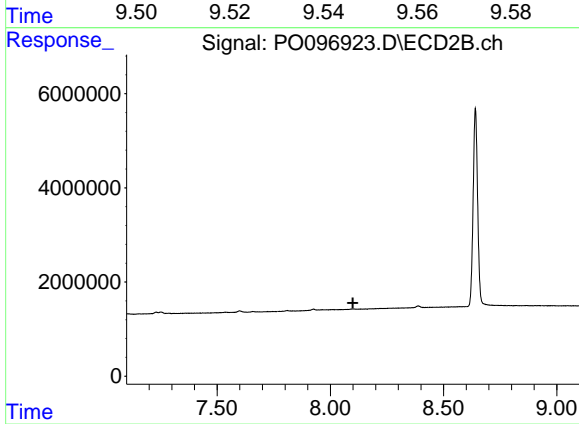
#43 AR-1268-3

R.T.: 7.810 min
 Delta R.T.: 0.001 min
 Response: 238699
 Conc: 1.65 ng/ml



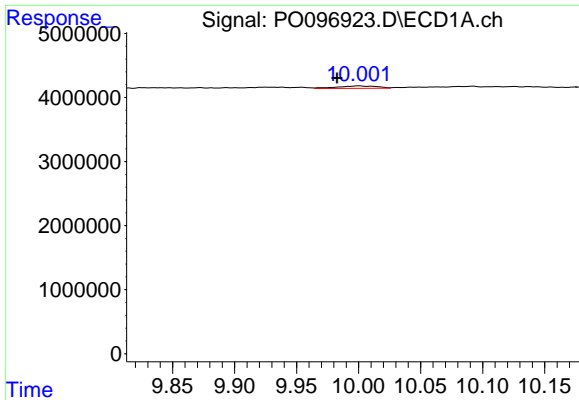
#44 AR-1268-4

R.T.: 9.549 min
 Delta R.T.: 0.006 min
 Response: 153720
 Conc: 1.66 ng/ml



#44 AR-1268-4

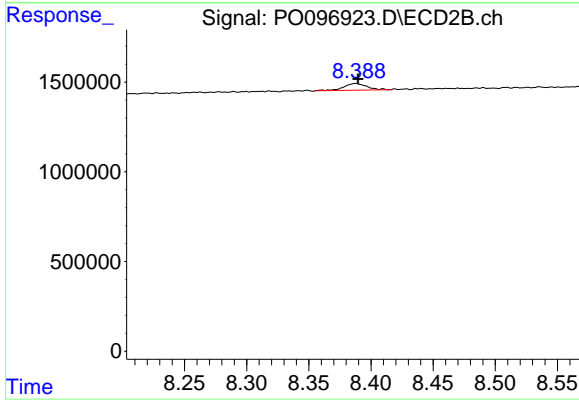
R.T.: 0.000 min
 Exp R.T. : 8.100 min
 Response: 0
 Conc: N.D.



#45 AR-1268-5

R.T.: 10.000 min
 Delta R.T.: 0.018 min
 Response: 867705
 Conc: 1.07 ng/ml

Instrument :
 ECD_O
 ClientSampleId :



#45 AR-1268-5

R.T.: 8.388 min
 Delta R.T.: -0.002 min
 Response: 483560
 Conc: 1.16 ng/ml