

Data Path : Z:\pestpcbsrv\HPCHEM1\ECD_0\Data\P0081023\
 Data File : P0096932.D
 Signal(s) : Signal #1: ECD1A.ch Signal #2: ECD2B.ch
 Acq On : 10 Aug 2023 18:07
 Operator : YP/AJ
 Sample : 03954-10
 Misc :
 ALS Vial : 29 Sample Multiplier: 1

Instrument :
 ECD_0
 ClientSampleId :

Integration File signal 1: autoint1.e
 Integration File signal 2: autoint2.e
 Quant Time: Aug 10 21:50:27 2023
 Quant Method : Z:\pestpcbsrv\HPCHEM1\ECD_0\methods\P0080723.M
 Quant Title : GC EXTRACTABLES
 QLast Update : Tue Aug 08 04:34:41 2023
 Response via : Initial Calibration
 Integrator: ChemStation

Volume Inj. : 2 µl
 Signal #1 Phase : ZB-MR1 Signal #2 Phase: ZB-MR2
 Signal #1 Info : 30Mx0.32mmx 0.50µ Signal #2 Info : 30M x 0.32mm x 0.25µm

Compound	RT#1	RT#2	Resp#1	Resp#2	ng/ml	ng/ml
System Monitoring Compounds						
1) SA Tetrachlo...	4.412	3.618	64670632	26793790	19.537	20.240
2) SA Decachlor...	10.358	8.640	40635384	21616690	18.570	18.685
Target Compounds						
3) L1 AR-1016-1	5.598	0.000	59040	0	0.627	N.D. #
4) L1 AR-1016-2	5.617	0.000	63110	0	0.472	N.D. #
5) L1 AR-1016-3	5.698	0.000	145689	0	1.674	N.D. #
6) L1 AR-1016-4	5.781	0.000	15809	0	0.235	N.D. #
7) L1 AR-1016-5	6.067	0.000	15254	0	0.218	N.D. #
8) L2 AR-1221-1	4.622	0.000	510702	0	12.531	N.D. #
9) L2 AR-1221-2	4.722	3.919	1093461	583950	35.993	45.195 #
10) L2 AR-1221-3	4.782	4.039f	58903	215196	0.673	5.421 #
11) L3 AR-1232-1	4.782	4.039f	58903	215196	0.808	6.653 #
12) L3 AR-1232-2	5.337	0.000	118564	0	2.991	N.D. #
13) L3 AR-1232-3	5.617	0.000	63110	0	1.032	N.D. #
14) L3 AR-1232-4	5.781	0.000	15809	0	0.518	N.D. #
15) L3 AR-1232-5	5.860	0.000	6583	0	0.235	N.D. #
16) L4 AR-1242-1	5.598	0.000	59040	0	0.704	N.D. #
17) L4 AR-1242-2	5.617	0.000	63110	0	0.536	N.D. #
18) L4 AR-1242-3	5.698	0.000	145689	0	1.972	N.D. #
19) L4 AR-1242-4	5.781	0.000	15809	0	0.266	N.D. #
20) L4 AR-1242-5	6.522	5.507	25486	328410	0.463	9.013 #
21) L5 AR-1248-1	5.598	0.000	59040	0	1.008	N.D. #
22) L5 AR-1248-2	5.860	0.000	6583	0	0.070	N.D. #
23) L5 AR-1248-3	6.067	0.000	15254	0	0.156	N.D. #
24) L5 AR-1248-4	6.473	0.000	182620	0	2.010	N.D. #
25) L5 AR-1248-5	6.522	5.600f	25486	1596421	0.289	34.147 #
26) L6 AR-1254-1	6.473	5.507	182620	328410	1.671	4.450 #
27) L6 AR-1254-2	6.696	5.655	315045	281835	1.954	4.278 #
28) L6 AR-1254-3	7.074	6.062	2150390	325509	13.723	3.221 #
29) L6 AR-1254-4	7.366	6.292	426335	123735	4.229	2.138 #
30) L6 AR-1254-5	7.798	6.708	1052519	473755	9.380	5.389 #
31) L7 AR-1260-1	7.244	6.191	1208764	209768	9.617	2.981 #
32) L7 AR-1260-2	7.501	6.383	483734	322746	3.590	3.867
33) L7 AR-1260-3	7.883	6.532	741713	226209	7.147	2.929 #
34) L7 AR-1260-4	8.090	6.994	1610108	254425	14.401	3.970 #
35) L7 AR-1260-5	8.447	7.252	360378	239561	1.716	1.728
36) L8 AR-1262-1	7.883	6.849f	741713	272032	4.994	6.910 #
37) L8 AR-1262-2	8.447	6.994	360378	254425	1.557	3.137 #
38) L8 AR-1262-3	8.736	7.535	-4791	95099	N.D.	1.482 #
39) L8 AR-1262-4	8.858	7.603	122804	372752	1.684	3.281 #
40) L8 AR-1262-5	9.550	0.000	144770	0	1.738	N.D. #
41) L9 AR-1268-1	8.736	7.535	-4791	95099	N.D.	0.513 #

Data Path : Z:\pestpcbsrv\HPCHEM1\ECD_0\Data\P0081023\
 Data File : P0096932.D
 Signal(s) : Signal #1: ECD1A.ch Signal #2: ECD2B.ch
 Acq On : 10 Aug 2023 18:07
 Operator : YP/AJ
 Sample : 03954-10
 Misc :
 ALS Vial : 29 Sample Multiplier: 1

Instrument :
 ECD_0
 ClientSampleId :

Integration File signal 1: autoint1.e
 Integration File signal 2: autoint2.e
 Quant Time: Aug 10 21:50:27 2023
 Quant Method : Z:\pestpcbsrv\HPCHEM1\ECD_0\methods\P0080723.M
 Quant Title : GC EXTRACTABLES
 QLast Update : Tue Aug 08 04:34:41 2023
 Response via : Initial Calibration
 Integrator: ChemStation

Volume Inj. : 2 µl
 Signal #1 Phase : ZB-MR1 Signal #2 Phase: ZB-MR2
 Signal #1 Info : 30Mx0.32mmx 0.50µ Signal #2 Info : 30M x 0.32mm x 0.25µm

	Compound	RT#1	RT#2	Resp#1	Resp#2	ng/ml	ng/ml
42)	L9 AR-1268-2	8.858	7.603	122804	372752	0.448	2.223 #
43)	L9 AR-1268-3	9.104	7.811	477004	35619	1.868	0.247 #
44)	L9 AR-1268-4	9.550	0.000	144770	0	1.561	N.D. #
45)	L9 AR-1268-5	9.973	8.387	143806	157049	0.178	0.378 #

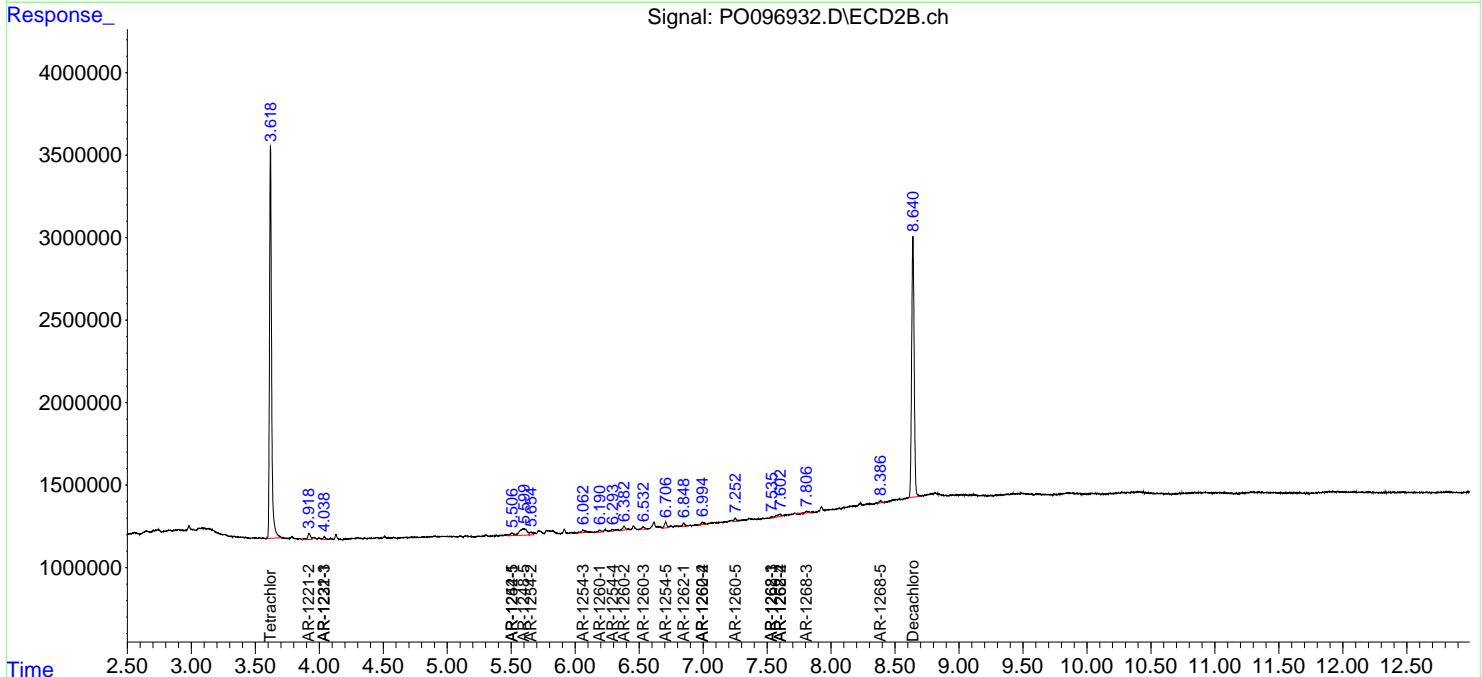
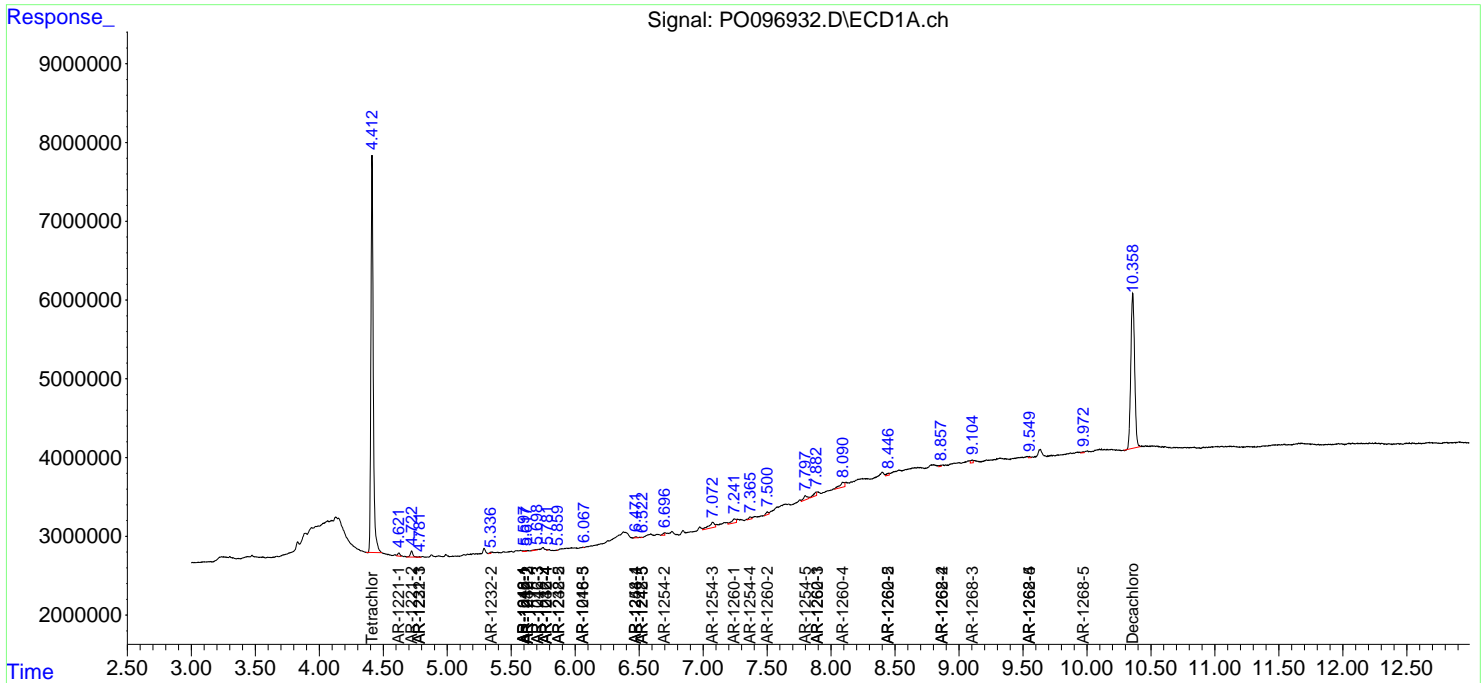
(f)=RT Delta > 1/2 Window (#)=Amounts differ by > 25% (m)=manual int.

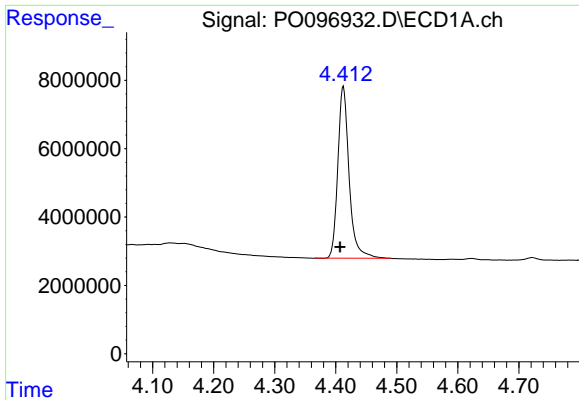
Data Path : Z:\pestpcbsrv\HPCHEM1\ECD_O\Data\PO081023\
 Data File : PO096932.D
 Signal(s) : Signal #1: ECD1A.ch Signal #2: ECD2B.ch
 Acq On : 10 Aug 2023 18:07
 Operator : YP/AJ
 Sample : 03954-10
 Misc :
 ALS Vial : 29 Sample Multiplier: 1

Instrument :
 ECD_O
 ClientSampleId :

Integration File signal 1: autoint1.e
 Integration File signal 2: autoint2.e
 Quant Time: Aug 10 21:50:27 2023
 Quant Method : Z:\pestpcbsrv\HPCHEM1\ECD_O\methods\PO080723.M
 Quant Title : GC EXTRACTABLES
 QLast Update : Tue Aug 08 04:34:41 2023
 Response via : Initial Calibration
 Integrator: ChemStation

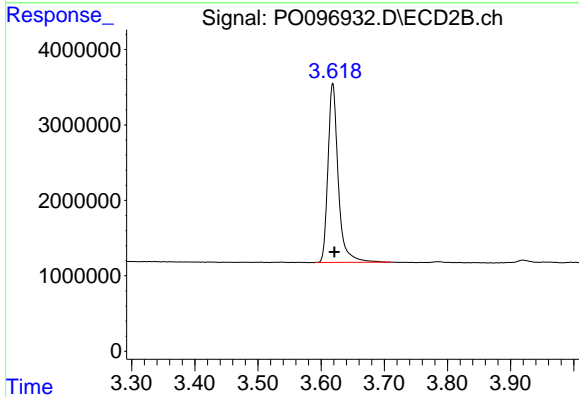
Volume Inj. : 2 µl
 Signal #1 Phase : ZB-MR1 Signal #2 Phase: ZB-MR2
 Signal #1 Info : 30Mx0.32mmx 0.50µ Signal #2 Info : 30M x 0.32mm x 0.25µm



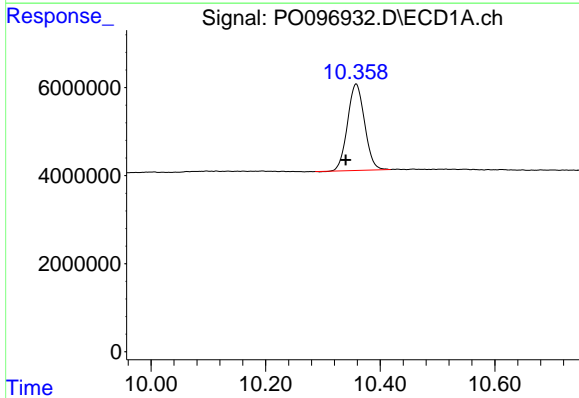


#1 Tetrachloro-m-xylene
R.T.: 4.412 min
Delta R.T.: 0.005 min
Response: 64670632
Conc: 19.54 ng/ml

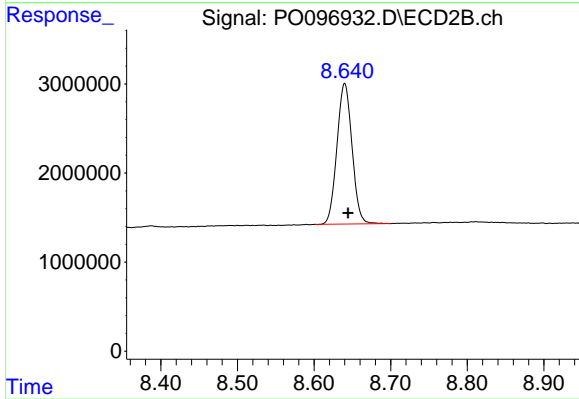
Instrument :
ECD_O
ClientSampleId :



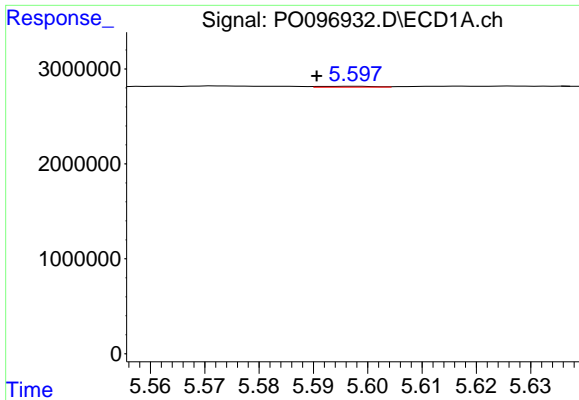
#1 Tetrachloro-m-xylene
R.T.: 3.618 min
Delta R.T.: -0.003 min
Response: 26793790
Conc: 20.24 ng/ml



#2 Decachlorobiphenyl
R.T.: 10.358 min
Delta R.T.: 0.019 min
Response: 40635384
Conc: 18.57 ng/ml



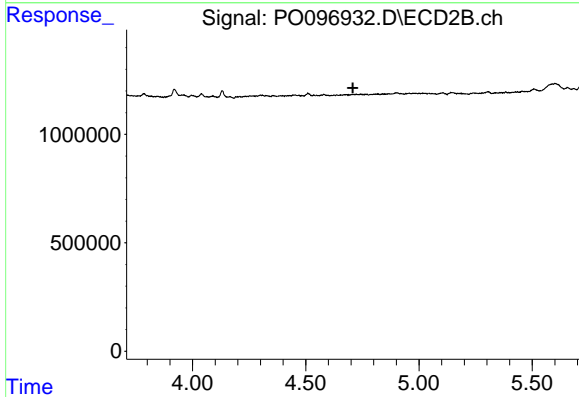
#2 Decachlorobiphenyl
R.T.: 8.640 min
Delta R.T.: -0.004 min
Response: 21616690
Conc: 18.68 ng/ml



#3 AR-1016-1

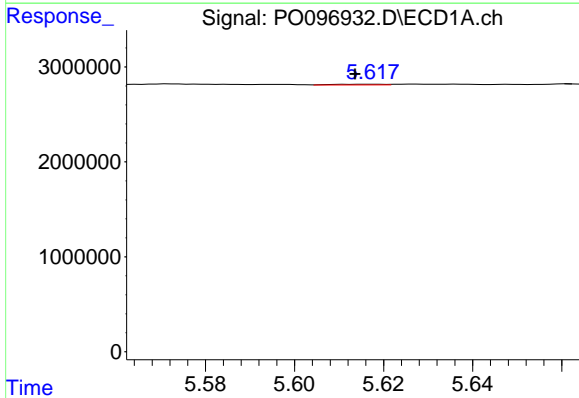
R.T.: 5.598 min
 Delta R.T.: 0.007 min
 Response: 59040
 Conc: 0.63 ng/ml

Instrument :
 ECD_O
 ClientSampleId :



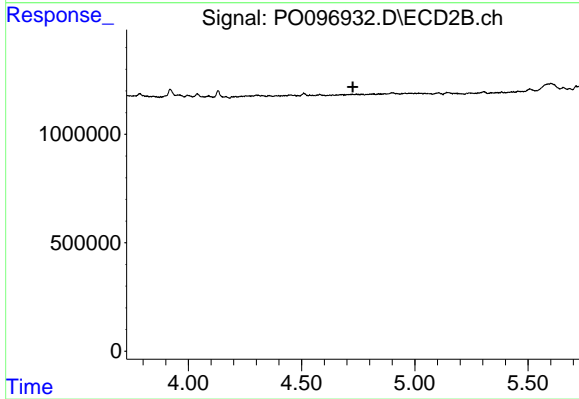
#3 AR-1016-1

R.T.: 0.000 min
 Exp R.T. : 4.708 min
 Response: 0
 Conc: N.D.



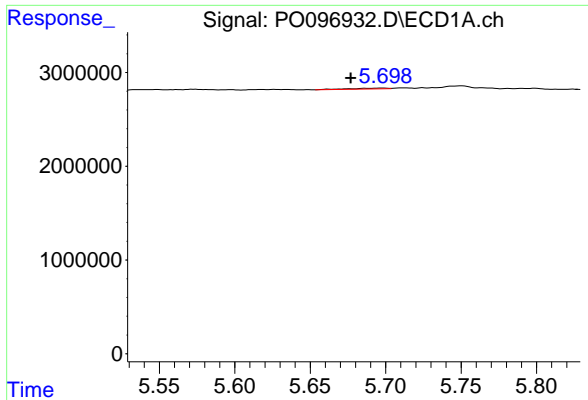
#4 AR-1016-2

R.T.: 5.617 min
 Delta R.T.: 0.004 min
 Response: 63110
 Conc: 0.47 ng/ml



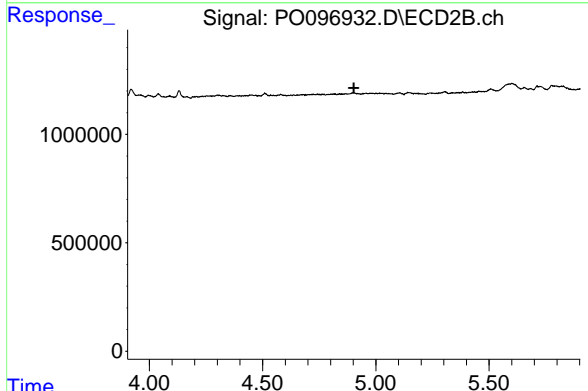
#4 AR-1016-2

R.T.: 0.000 min
 Exp R.T. : 4.726 min
 Response: 0
 Conc: N.D.

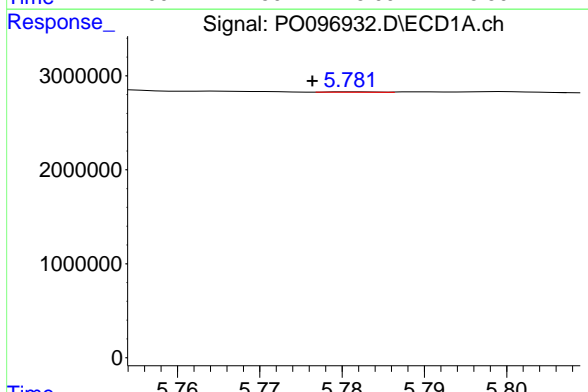


#5 AR-1016-3
 R.T.: 5.698 min
 Delta R.T.: 0.021 min
 Response: 145689
 Conc: 1.67 ng/ml

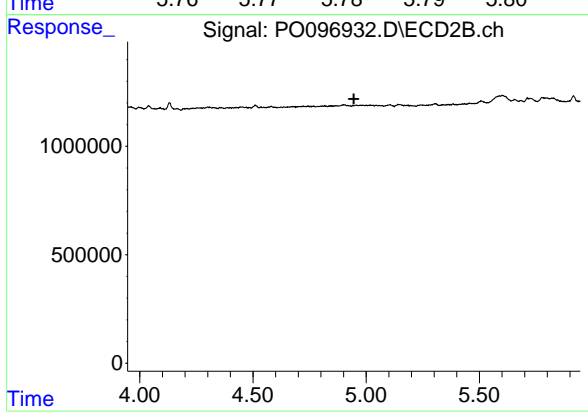
Instrument :
 ECD_O
 ClientSampleId :



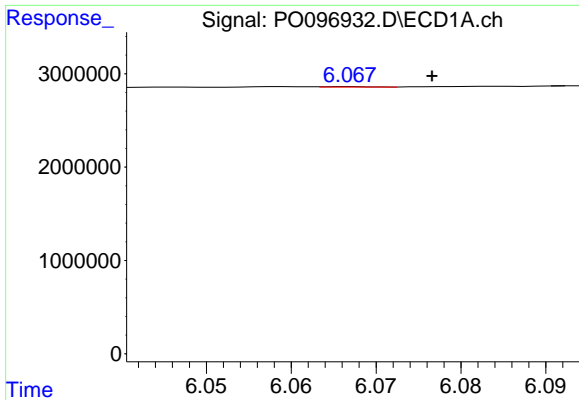
#5 AR-1016-3
 R.T.: 0.000 min
 Exp R.T. : 4.903 min
 Response: 0
 Conc: N.D.



#6 AR-1016-4
 R.T.: 5.781 min
 Delta R.T.: 0.005 min
 Response: 15809
 Conc: 0.24 ng/ml



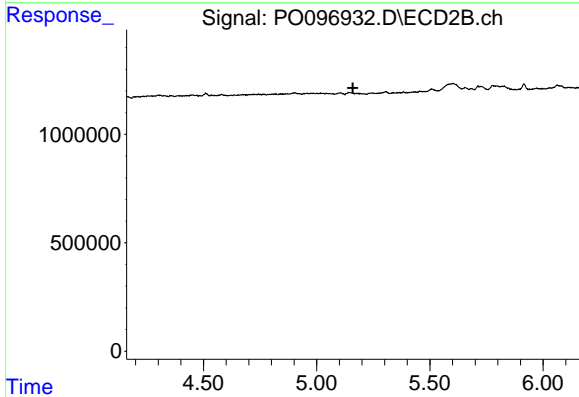
#6 AR-1016-4
 R.T.: 0.000 min
 Exp R.T. : 4.946 min
 Response: 0
 Conc: N.D.



#7 AR-1016-5

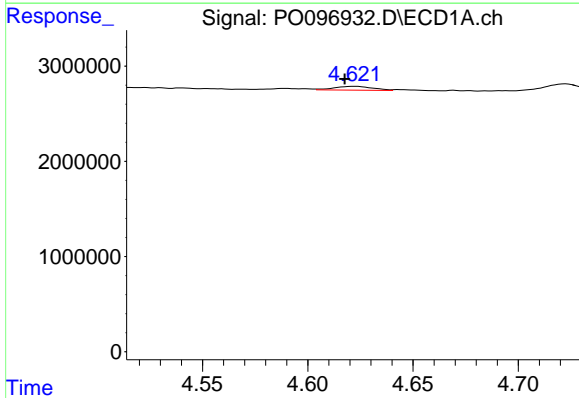
R.T.: 6.067 min
 Delta R.T.: -0.010 min
 Response: 15254
 Conc: 0.22 ng/ml

Instrument :
 ECD_O
 ClientSampleId :



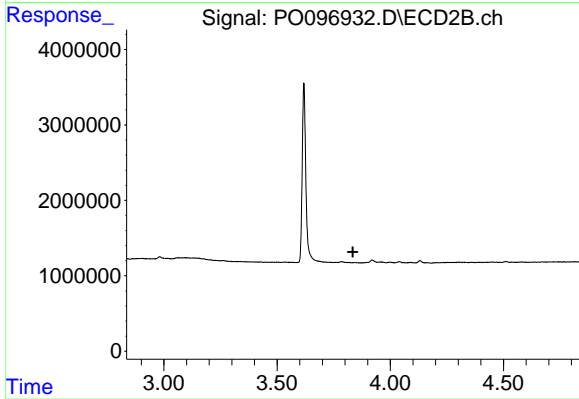
#7 AR-1016-5

R.T.: 0.000 min
 Exp R.T. : 5.160 min
 Response: 0
 Conc: N.D.



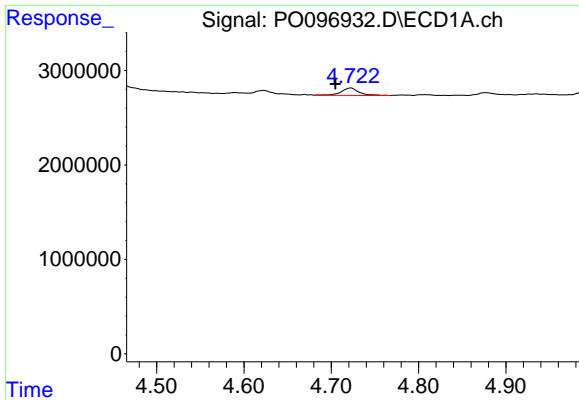
#8 AR-1221-1

R.T.: 4.622 min
 Delta R.T.: 0.005 min
 Response: 510702
 Conc: 12.53 ng/ml



#8 AR-1221-1

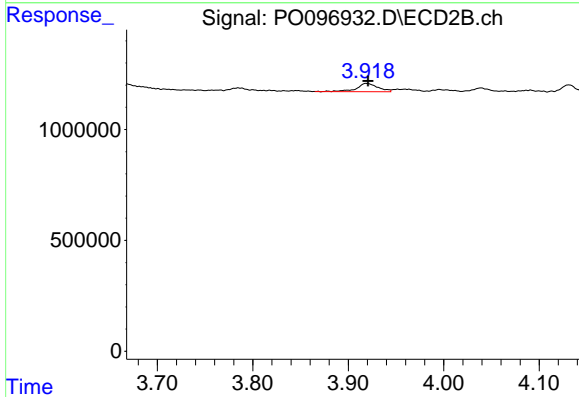
R.T.: 0.000 min
 Exp R.T. : 3.835 min
 Response: 0
 Conc: N.D.



#9 AR-1221-2

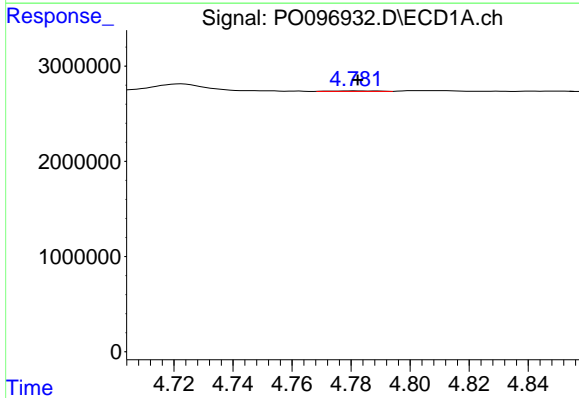
R.T.: 4.722 min
 Delta R.T.: 0.017 min
 Response: 1093461
 Conc: 35.99 ng/ml

Instrument :
 ECD_O
 ClientSampleId :



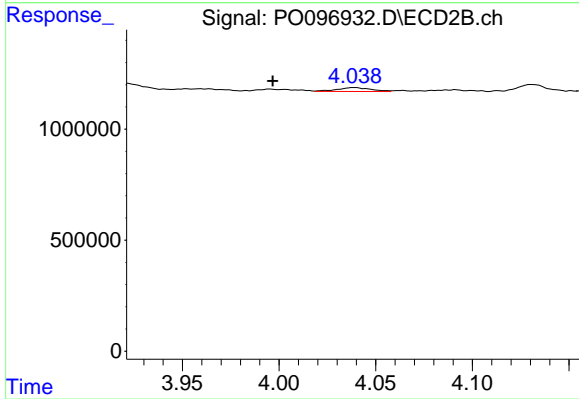
#9 AR-1221-2

R.T.: 3.919 min
 Delta R.T.: -0.002 min
 Response: 583950
 Conc: 45.19 ng/ml



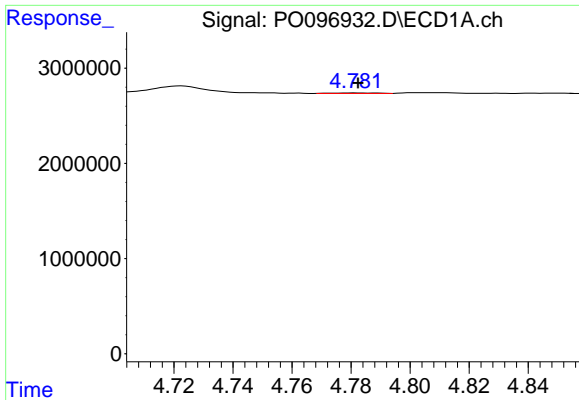
#10 AR-1221-3

R.T.: 4.782 min
 Delta R.T.: 0.000 min
 Response: 58903
 Conc: 0.67 ng/ml



#10 AR-1221-3

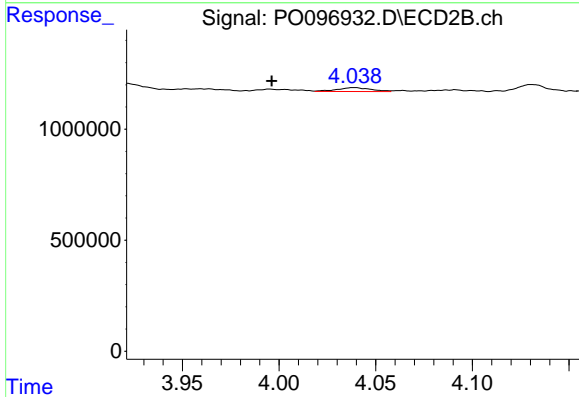
R.T.: 4.039 min
 Delta R.T.: 0.042 min
 Response: 215196
 Conc: 5.42 ng/ml



#11 AR-1232-1

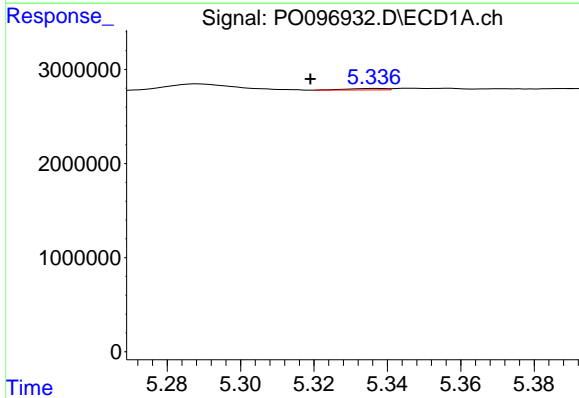
R.T.: 4.782 min
 Delta R.T.: 0.000 min
 Response: 58903
 Conc: 0.81 ng/ml

Instrument :
 ECD_O
 ClientSampleId :



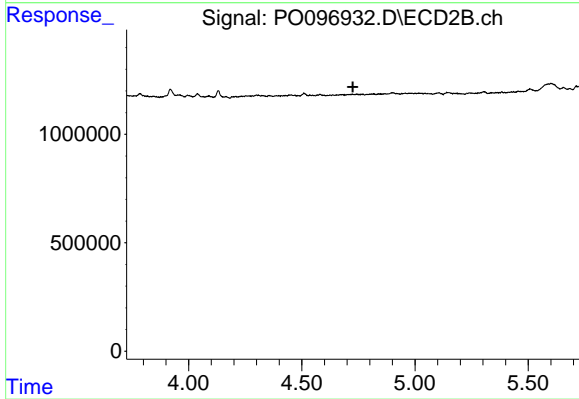
#11 AR-1232-1

R.T.: 4.039 min
 Delta R.T.: 0.043 min
 Response: 215196
 Conc: 6.65 ng/ml



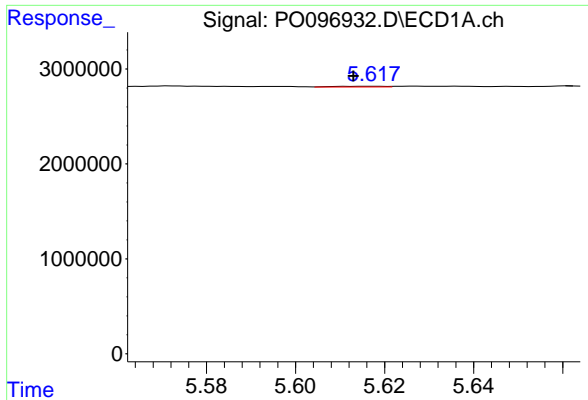
#12 AR-1232-2

R.T.: 5.337 min
 Delta R.T.: 0.018 min
 Response: 118564
 Conc: 2.99 ng/ml



#12 AR-1232-2

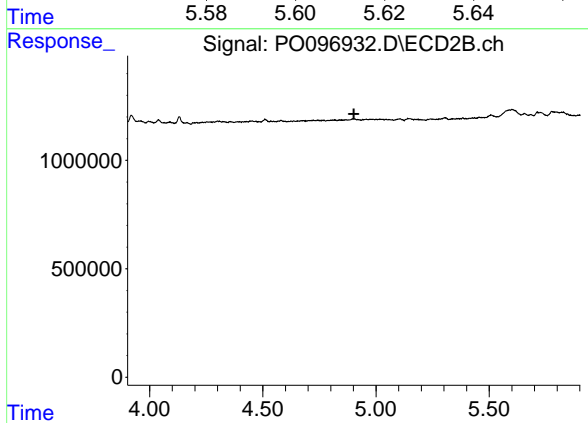
R.T.: 0.000 min
 Exp R.T. : 4.726 min
 Response: 0
 Conc: N.D.



#13 AR-1232-3

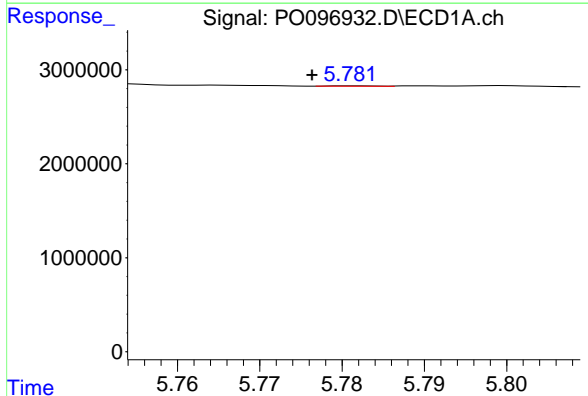
R.T.: 5.617 min
 Delta R.T.: 0.005 min
 Response: 63110
 Conc: 1.03 ng/ml

Instrument :
 ECD_O
 ClientSampleId :



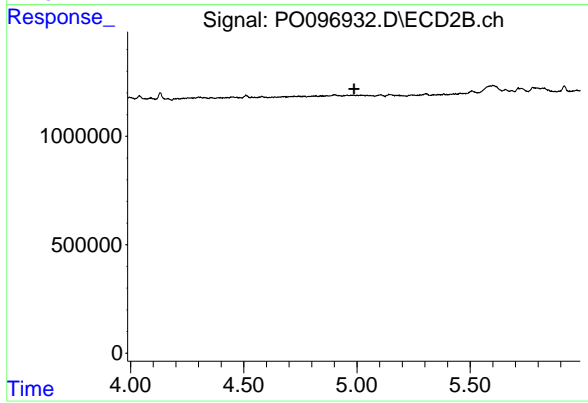
#13 AR-1232-3

R.T.: 0.000 min
 Exp R.T. : 4.902 min
 Response: 0
 Conc: N.D.



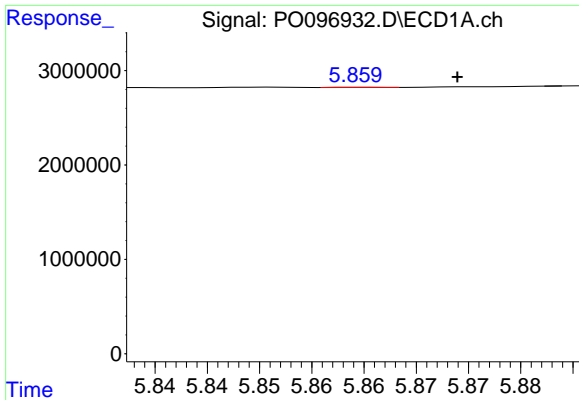
#14 AR-1232-4

R.T.: 5.781 min
 Delta R.T.: 0.005 min
 Response: 15809
 Conc: 0.52 ng/ml



#14 AR-1232-4

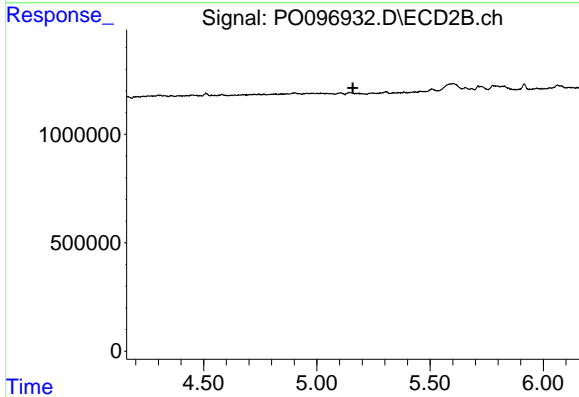
R.T.: 0.000 min
 Exp R.T. : 4.987 min
 Response: 0
 Conc: N.D.



#15 AR-1232-5

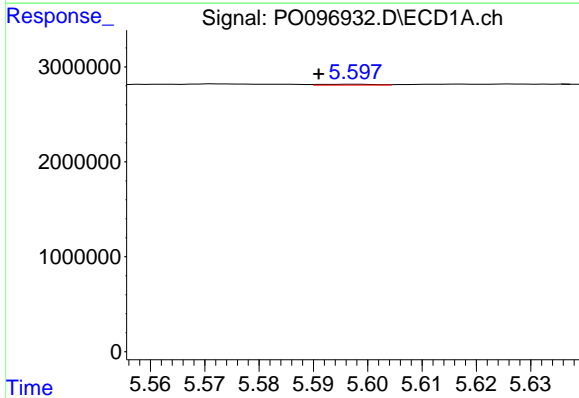
R.T.: 5.860 min
 Delta R.T.: -0.009 min
 Response: 6583
 Conc: 0.24 ng/ml

Instrument :
 ECD_O
 ClientSampleId :



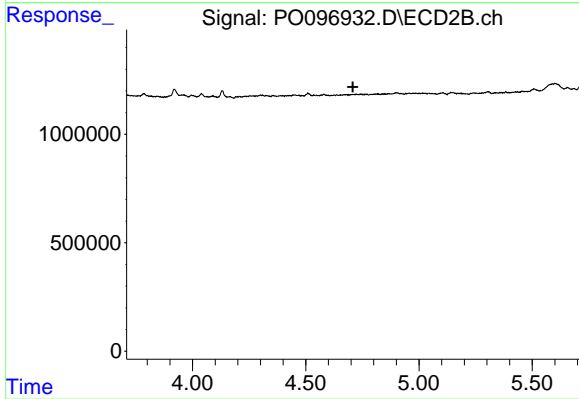
#15 AR-1232-5

R.T.: 0.000 min
 Exp R.T. : 5.159 min
 Response: 0
 Conc: N.D.



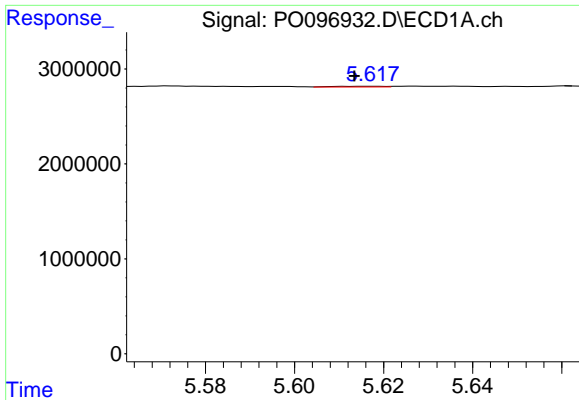
#16 AR-1242-1

R.T.: 5.598 min
 Delta R.T.: 0.007 min
 Response: 59040
 Conc: 0.70 ng/ml



#16 AR-1242-1

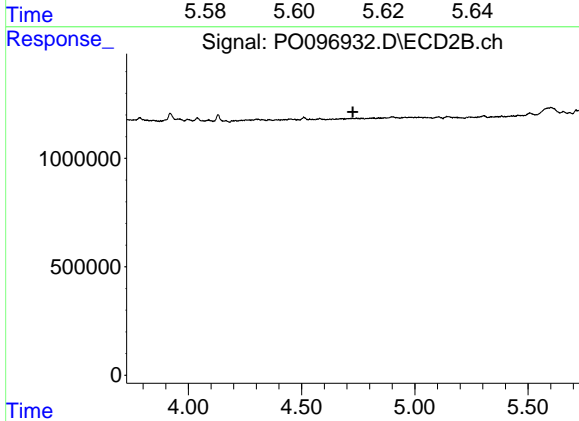
R.T.: 0.000 min
 Exp R.T. : 4.708 min
 Response: 0
 Conc: N.D.



#17 AR-1242-2

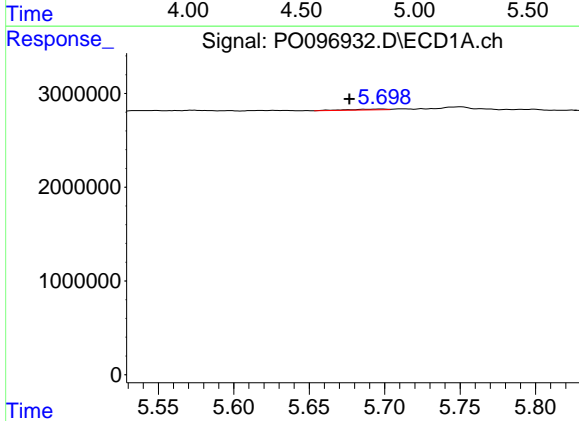
R.T.: 5.617 min
 Delta R.T.: 0.004 min
 Response: 63110
 Conc: 0.54 ng/ml

Instrument :
 ECD_O
 ClientSampleId :



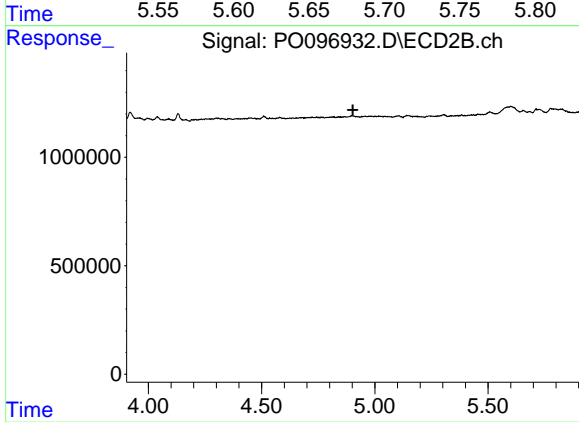
#17 AR-1242-2

R.T.: 0.000 min
 Exp R.T. : 4.727 min
 Response: 0
 Conc: N.D.



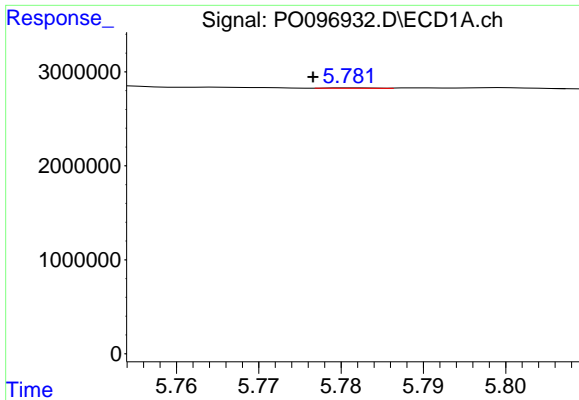
#18 AR-1242-3

R.T.: 5.698 min
 Delta R.T.: 0.021 min
 Response: 145689
 Conc: 1.97 ng/ml



#18 AR-1242-3

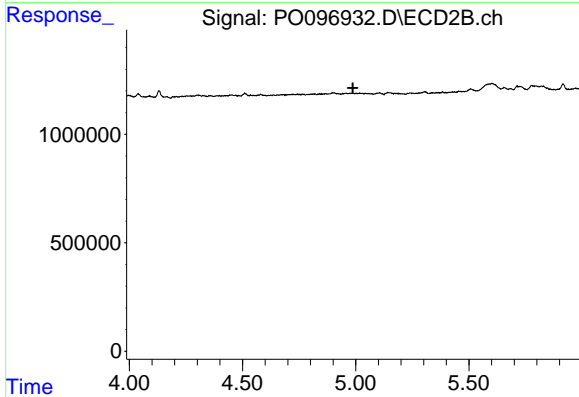
R.T.: 0.000 min
 Exp R.T. : 4.903 min
 Response: 0
 Conc: N.D.



#19 AR-1242-4

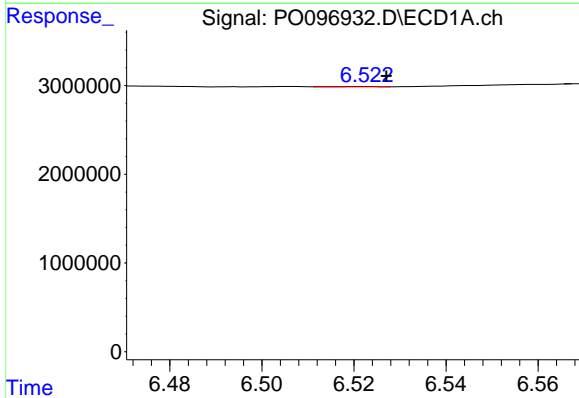
R.T.: 5.781 min
 Delta R.T.: 0.005 min
 Response: 15809
 Conc: 0.27 ng/ml

Instrument :
 ECD_O
 ClientSampleId :



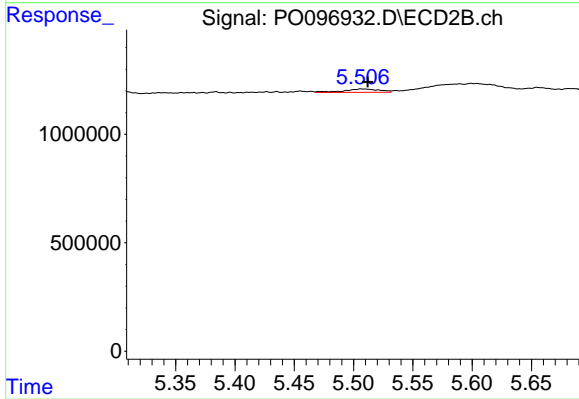
#19 AR-1242-4

R.T.: 0.000 min
 Exp R.T. : 4.987 min
 Response: 0
 Conc: N.D.



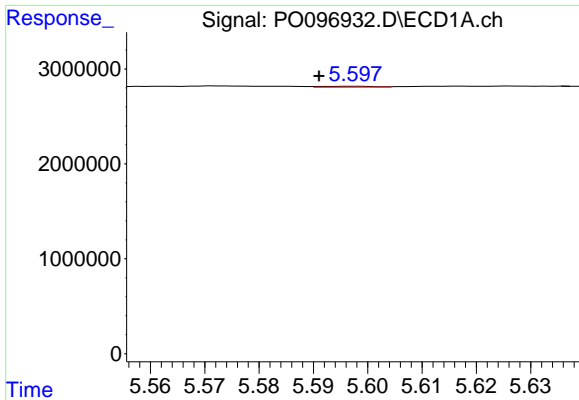
#20 AR-1242-5

R.T.: 6.522 min
 Delta R.T.: -0.005 min
 Response: 25486
 Conc: 0.46 ng/ml



#20 AR-1242-5

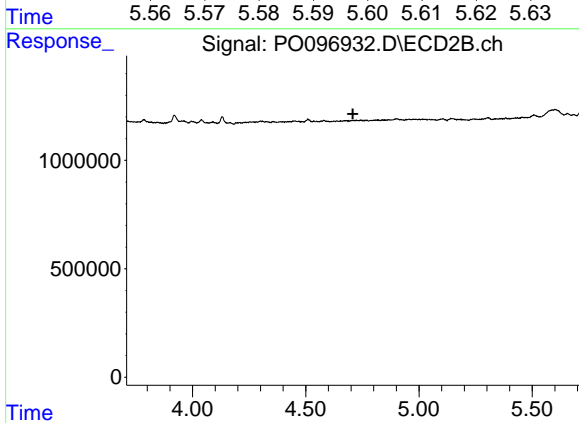
R.T.: 5.507 min
 Delta R.T.: -0.005 min
 Response: 328410
 Conc: 9.01 ng/ml



#21 AR-1248-1

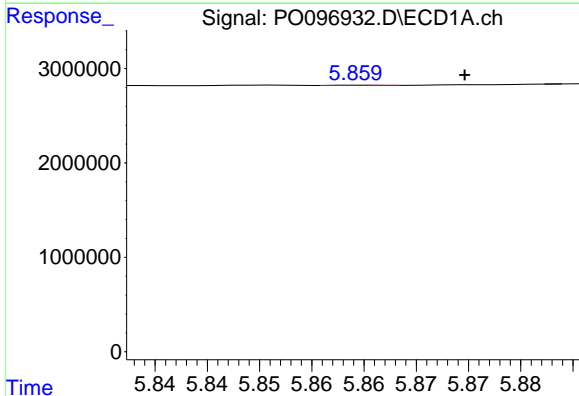
R.T.: 5.598 min
 Delta R.T.: 0.007 min
 Response: 59040
 Conc: 1.01 ng/ml

Instrument :
 ECD_O
 ClientSampleId :



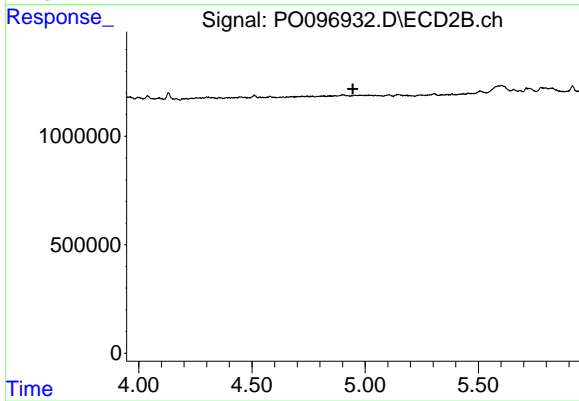
#21 AR-1248-1

R.T.: 0.000 min
 Exp R.T. : 4.708 min
 Response: 0
 Conc: N.D.



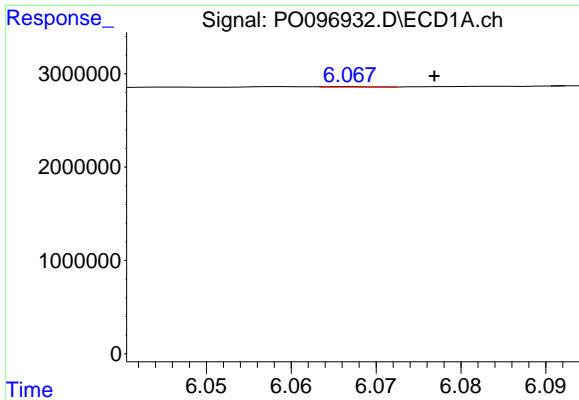
#22 AR-1248-2

R.T.: 5.860 min
 Delta R.T.: -0.010 min
 Response: 6583
 Conc: 0.07 ng/ml



#22 AR-1248-2

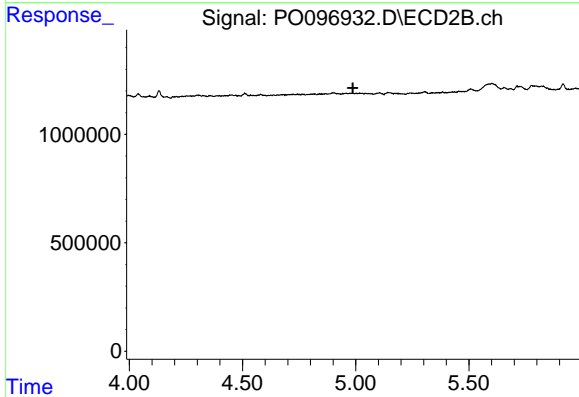
R.T.: 0.000 min
 Exp R.T. : 4.946 min
 Response: 0
 Conc: N.D.



#23 AR-1248-3

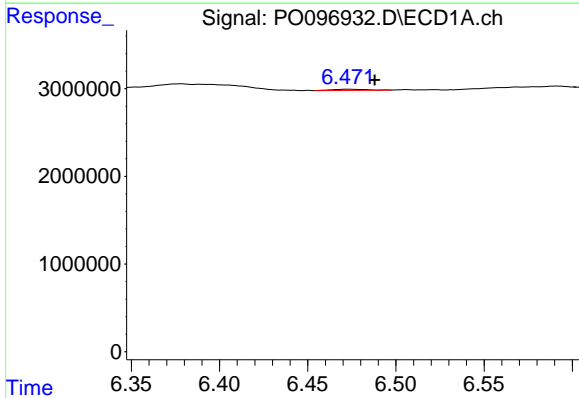
R.T.: 6.067 min
 Delta R.T.: -0.010 min
 Response: 15254
 Conc: 0.16 ng/ml

Instrument :
 ECD_O
 ClientSampleId :



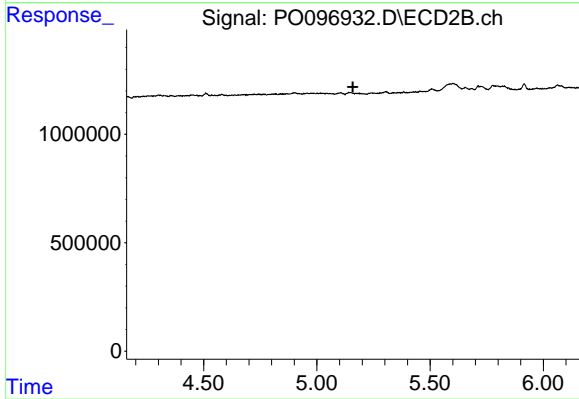
#23 AR-1248-3

R.T.: 0.000 min
 Exp R.T. : 4.987 min
 Response: 0
 Conc: N.D.



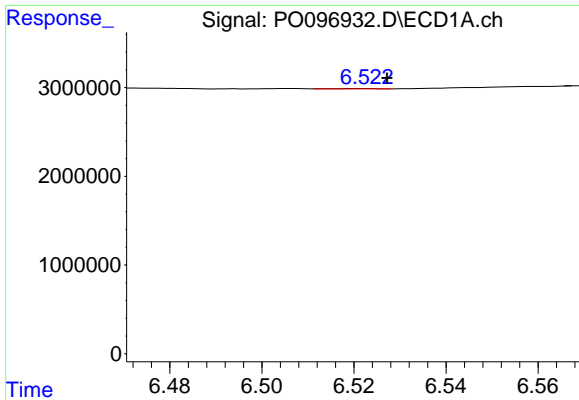
#24 AR-1248-4

R.T.: 6.473 min
 Delta R.T.: -0.015 min
 Response: 182620
 Conc: 2.01 ng/ml



#24 AR-1248-4

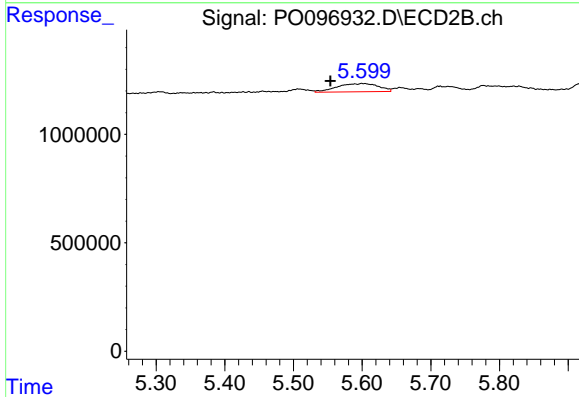
R.T.: 0.000 min
 Exp R.T. : 5.159 min
 Response: 0
 Conc: N.D.



#25 AR-1248-5

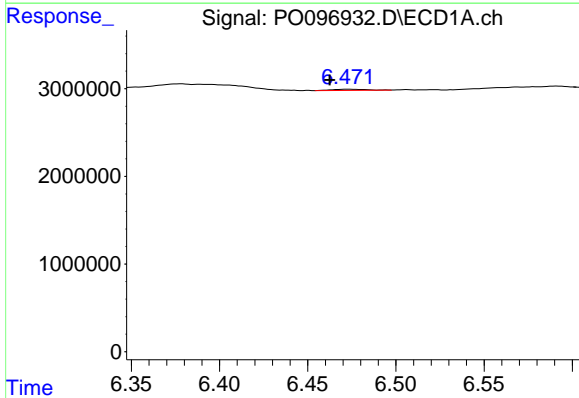
R.T.: 6.522 min
 Delta R.T.: -0.005 min
 Response: 25486
 Conc: 0.29 ng/ml

Instrument :
 ECD_O
 ClientSampleId :



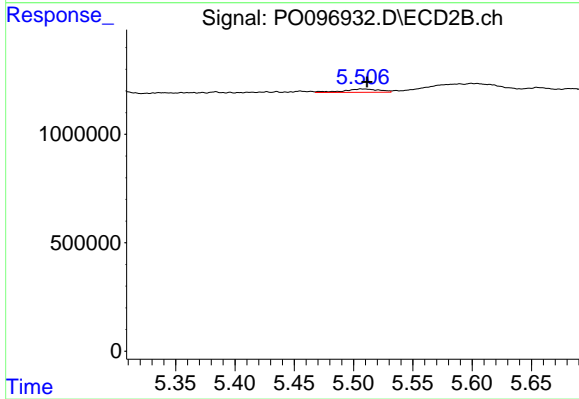
#25 AR-1248-5

R.T.: 5.600 min
 Delta R.T.: 0.046 min
 Response: 1596421
 Conc: 34.15 ng/ml



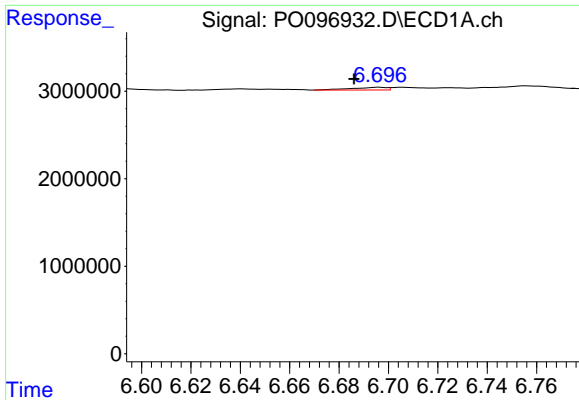
#26 AR-1254-1

R.T.: 6.473 min
 Delta R.T.: 0.010 min
 Response: 182620
 Conc: 1.67 ng/ml



#26 AR-1254-1

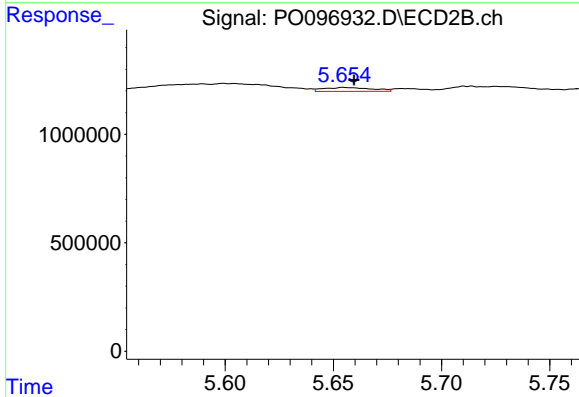
R.T.: 5.507 min
 Delta R.T.: -0.005 min
 Response: 328410
 Conc: 4.45 ng/ml



#27 AR-1254-2

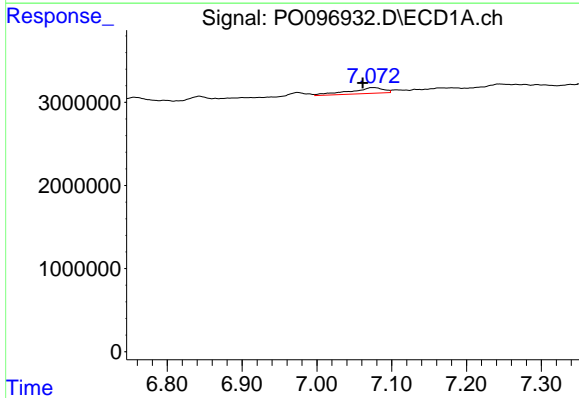
R.T.: 6.696 min
 Delta R.T.: 0.010 min
 Response: 315045
 Conc: 1.95 ng/ml

Instrument :
 ECD_O
 ClientSampleId :



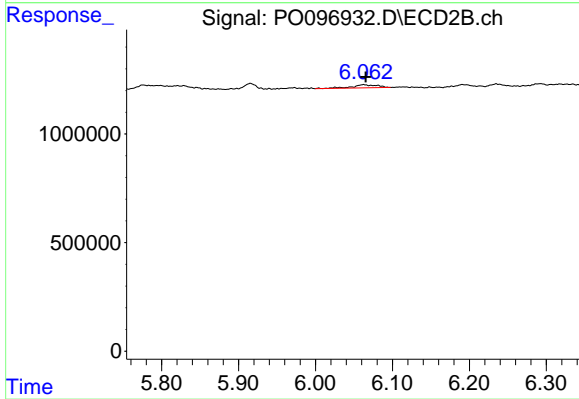
#27 AR-1254-2

R.T.: 5.655 min
 Delta R.T.: -0.005 min
 Response: 281835
 Conc: 4.28 ng/ml



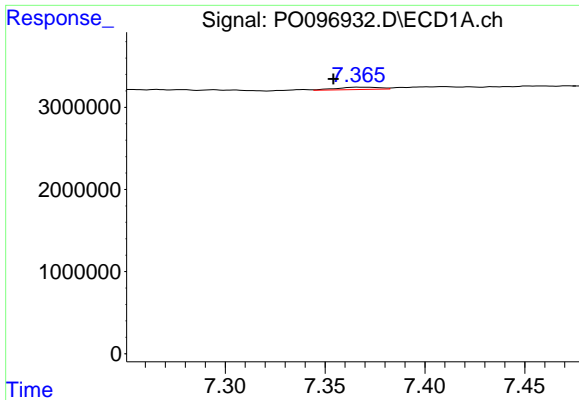
#28 AR-1254-3

R.T.: 7.074 min
 Delta R.T.: 0.013 min
 Response: 2150390
 Conc: 13.72 ng/ml



#28 AR-1254-3

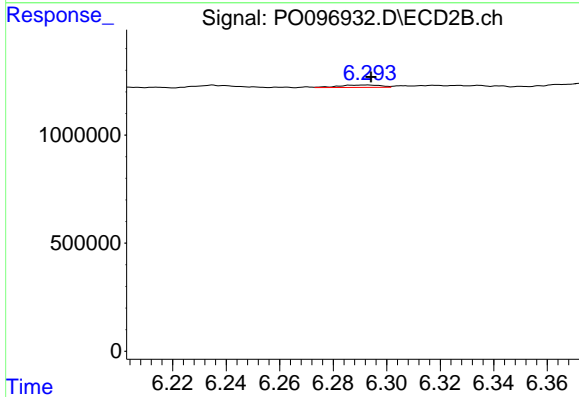
R.T.: 6.062 min
 Delta R.T.: -0.003 min
 Response: 325509
 Conc: 3.22 ng/ml



#29 AR-1254-4

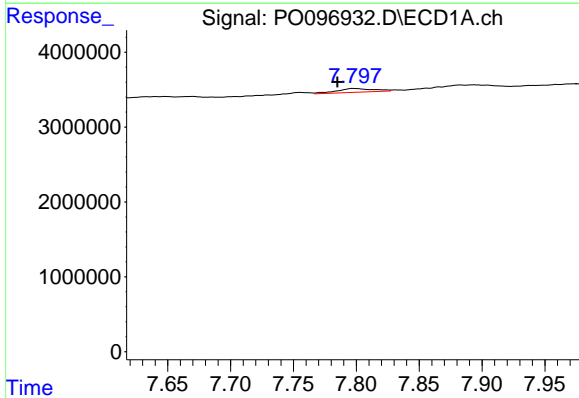
R.T.: 7.366 min
 Delta R.T.: 0.012 min
 Response: 426335
 Conc: 4.23 ng/ml

Instrument :
 ECD_O
 ClientSampleId :



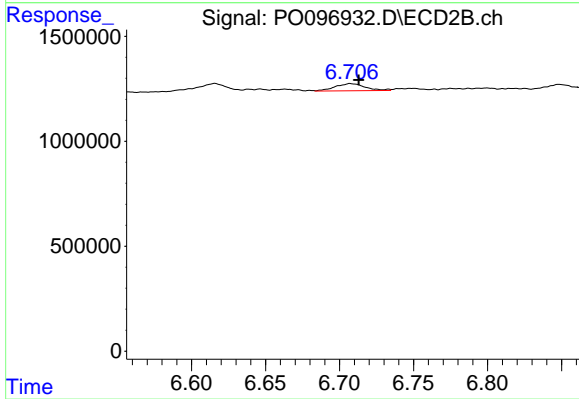
#29 AR-1254-4

R.T.: 6.292 min
 Delta R.T.: -0.002 min
 Response: 123735
 Conc: 2.14 ng/ml



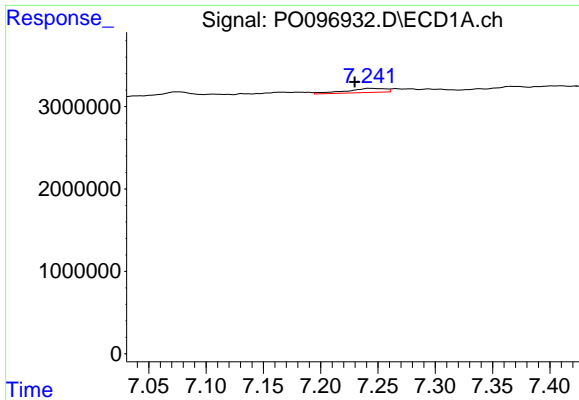
#30 AR-1254-5

R.T.: 7.798 min
 Delta R.T.: 0.013 min
 Response: 1052519
 Conc: 9.38 ng/ml



#30 AR-1254-5

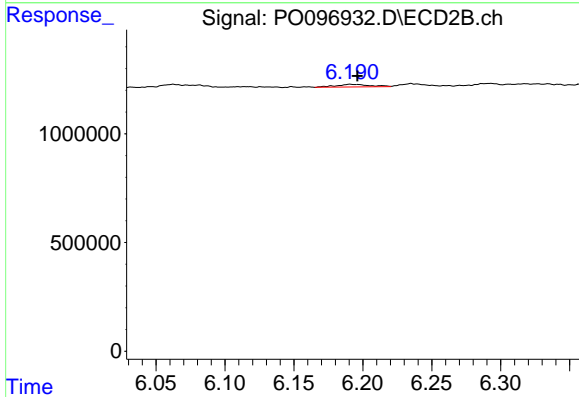
R.T.: 6.708 min
 Delta R.T.: -0.005 min
 Response: 473755
 Conc: 5.39 ng/ml



#31 AR-1260-1

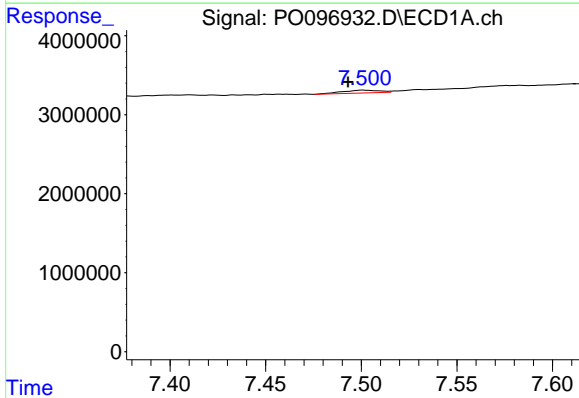
R.T.: 7.244 min
 Delta R.T.: 0.014 min
 Response: 1208764
 Conc: 9.62 ng/ml

Instrument :
 ECD_O
 ClientSampleId :



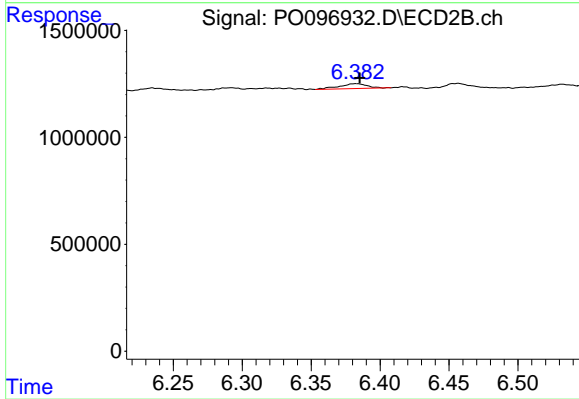
#31 AR-1260-1

R.T.: 6.191 min
 Delta R.T.: -0.005 min
 Response: 209768
 Conc: 2.98 ng/ml



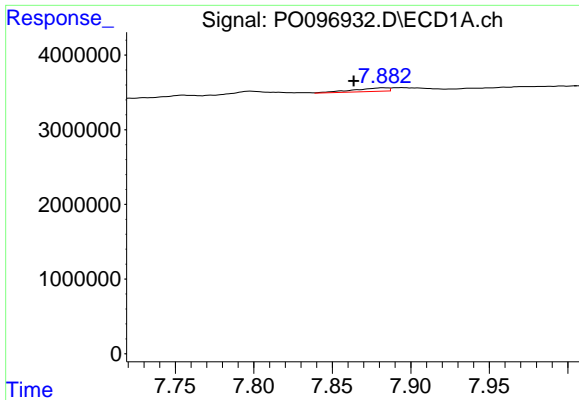
#32 AR-1260-2

R.T.: 7.501 min
 Delta R.T.: 0.008 min
 Response: 483734
 Conc: 3.59 ng/ml



#32 AR-1260-2

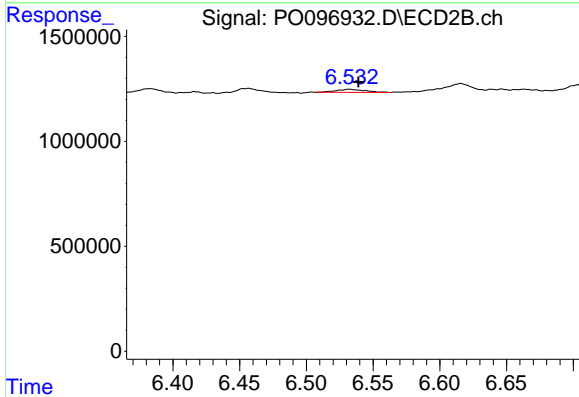
R.T.: 6.383 min
 Delta R.T.: -0.003 min
 Response: 322746
 Conc: 3.87 ng/ml



#33 AR-1260-3

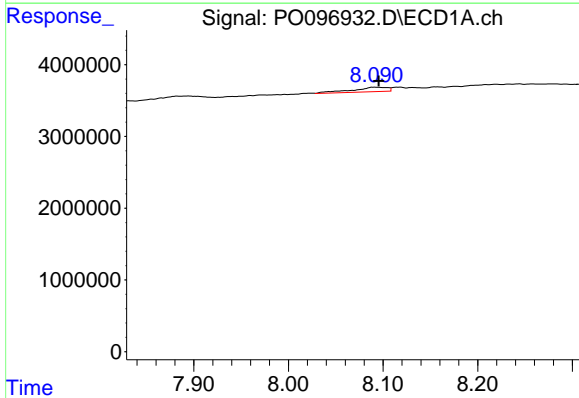
R.T.: 7.883 min
 Delta R.T.: 0.019 min
 Response: 741713
 Conc: 7.15 ng/ml

Instrument :
 ECD_O
 ClientSampleId :



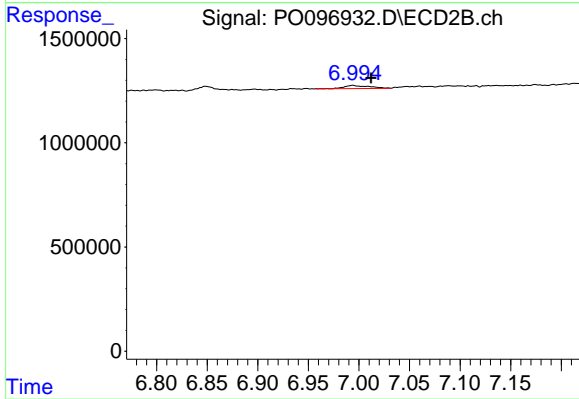
#33 AR-1260-3

R.T.: 6.532 min
 Delta R.T.: -0.007 min
 Response: 226209
 Conc: 2.93 ng/ml



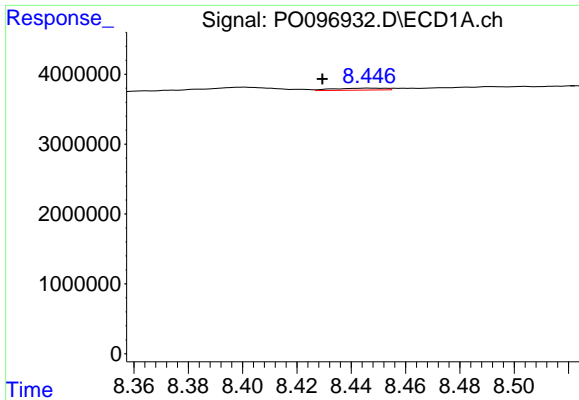
#34 AR-1260-4

R.T.: 8.090 min
 Delta R.T.: -0.005 min
 Response: 1610108
 Conc: 14.40 ng/ml



#34 AR-1260-4

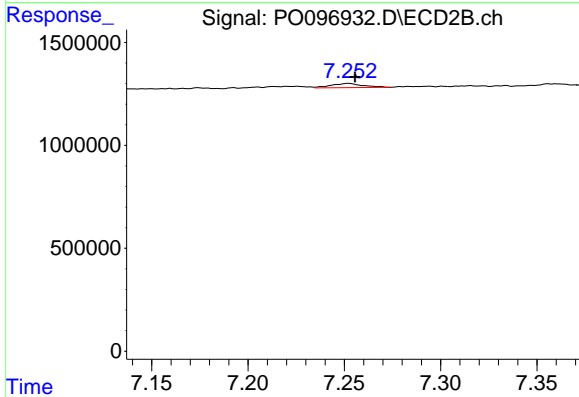
R.T.: 6.994 min
 Delta R.T.: -0.018 min
 Response: 254425
 Conc: 3.97 ng/ml



#35 AR-1260-5

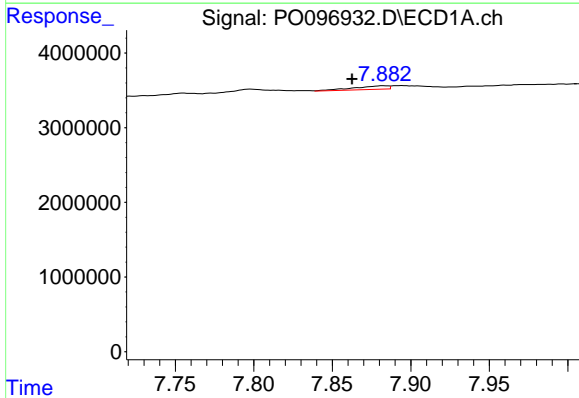
R.T.: 8.447 min
 Delta R.T.: 0.017 min
 Response: 360378
 Conc: 1.72 ng/ml

Instrument :
 ECD_O
 ClientSampleId :



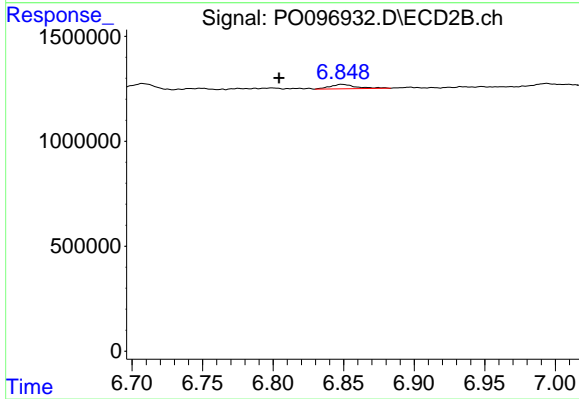
#35 AR-1260-5

R.T.: 7.252 min
 Delta R.T.: -0.003 min
 Response: 239561
 Conc: 1.73 ng/ml



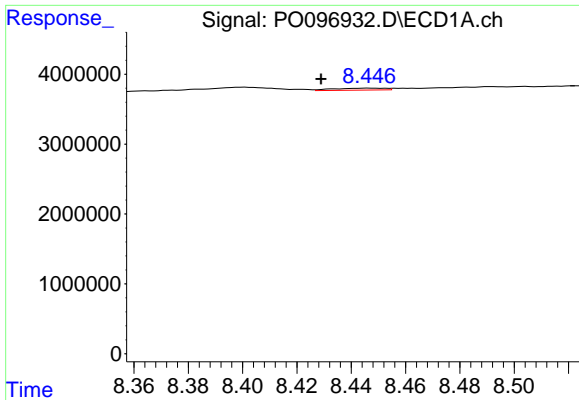
#36 AR-1262-1

R.T.: 7.883 min
 Delta R.T.: 0.020 min
 Response: 741713
 Conc: 4.99 ng/ml



#36 AR-1262-1

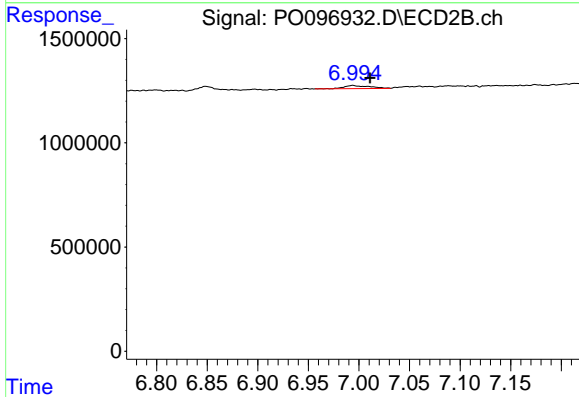
R.T.: 6.849 min
 Delta R.T.: 0.044 min
 Response: 272032
 Conc: 6.91 ng/ml



#37 AR-1262-2

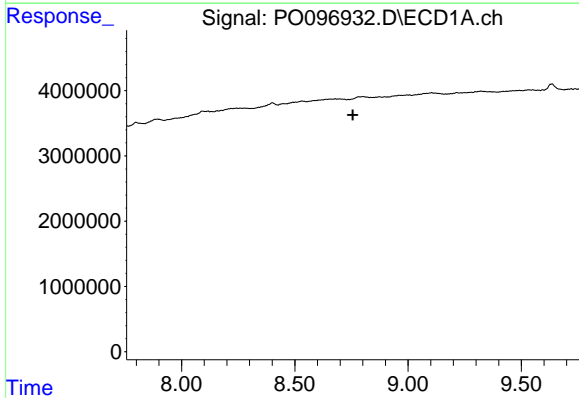
R.T.: 8.447 min
 Delta R.T.: 0.018 min
 Response: 360378
 Conc: 1.56 ng/ml

Instrument :
 ECD_O
 ClientSampleId :



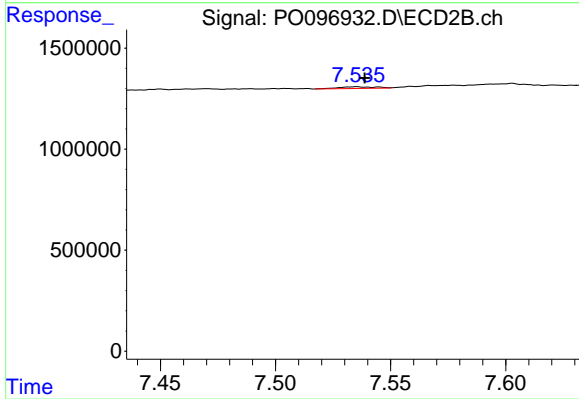
#37 AR-1262-2

R.T.: 6.994 min
 Delta R.T.: -0.017 min
 Response: 254425
 Conc: 3.14 ng/ml



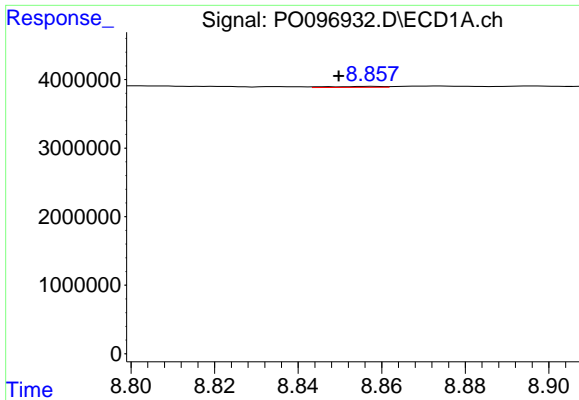
#38 AR-1262-3

R.T.: 8.736 min
 Delta R.T.: -0.021 min
 Response: -4791
 Conc: N.D.



#38 AR-1262-3

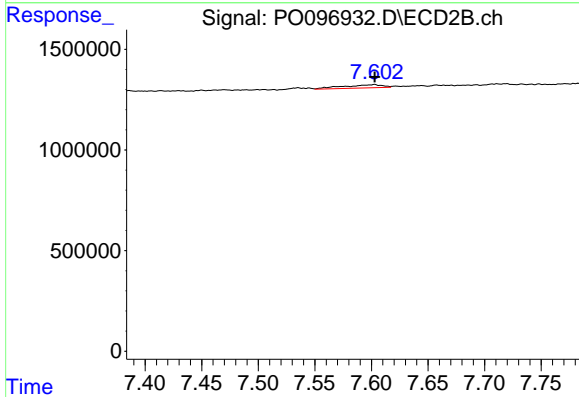
R.T.: 7.535 min
 Delta R.T.: -0.004 min
 Response: 95099
 Conc: 1.48 ng/ml



#39 AR-1262-4

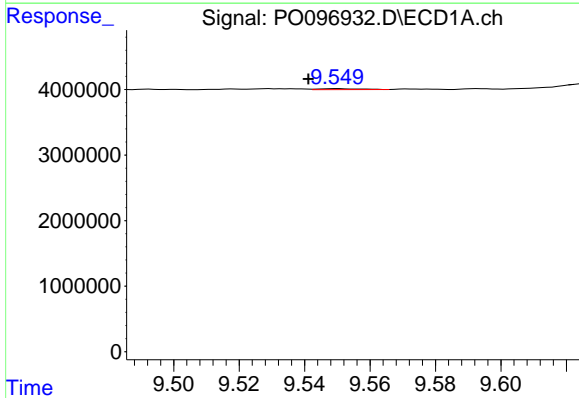
R.T.: 8.858 min
 Delta R.T.: 0.008 min
 Response: 122804
 Conc: 1.68 ng/ml

Instrument :
 ECD_O
 ClientSampleId :



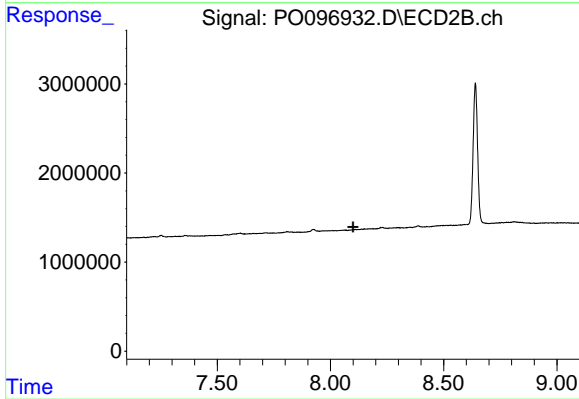
#39 AR-1262-4

R.T.: 7.603 min
 Delta R.T.: 0.000 min
 Response: 372752
 Conc: 3.28 ng/ml



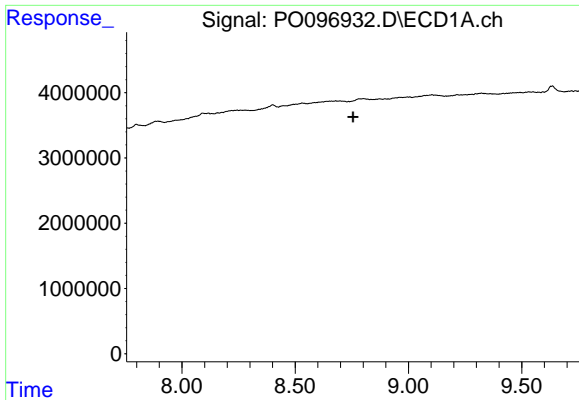
#40 AR-1262-5

R.T.: 9.550 min
 Delta R.T.: 0.009 min
 Response: 144770
 Conc: 1.74 ng/ml



#40 AR-1262-5

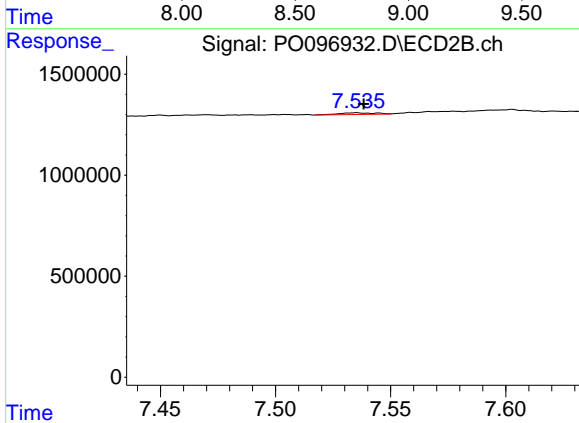
R.T.: 0.000 min
 Exp R.T. : 8.099 min
 Response: 0
 Conc: N.D.



#41 AR-1268-1

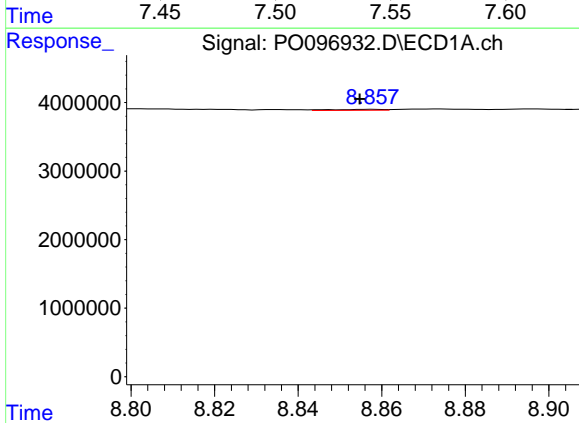
R.T.: 8.736 min
 Delta R.T.: -0.019 min
 Response: -4791
 Conc: N.D.

Instrument :
 ECD_O
 ClientSampleId :



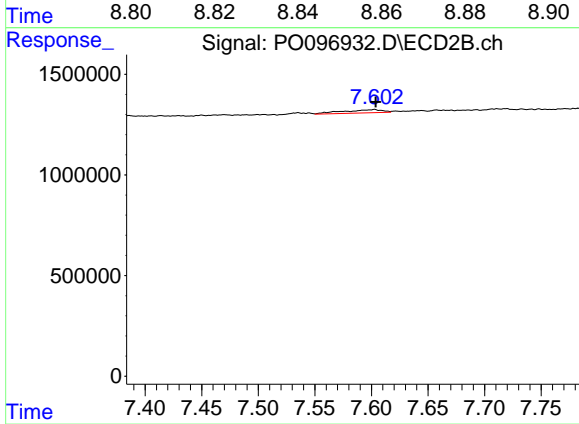
#41 AR-1268-1

R.T.: 7.535 min
 Delta R.T.: -0.003 min
 Response: 95099
 Conc: 0.51 ng/ml



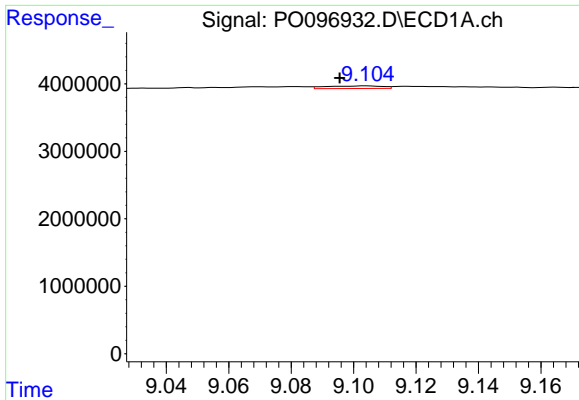
#42 AR-1268-2

R.T.: 8.858 min
 Delta R.T.: 0.003 min
 Response: 122804
 Conc: 0.45 ng/ml



#42 AR-1268-2

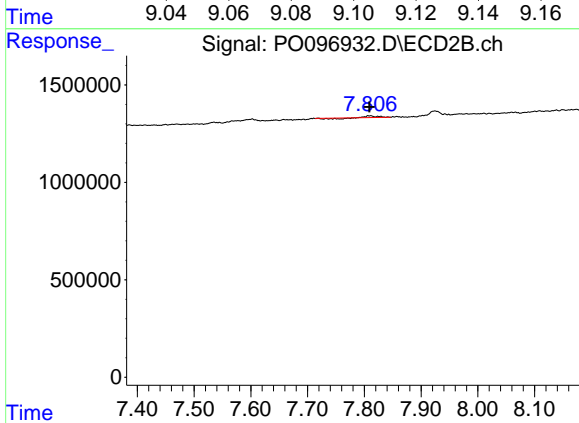
R.T.: 7.603 min
 Delta R.T.: -0.001 min
 Response: 372752
 Conc: 2.22 ng/ml



#43 AR-1268-3

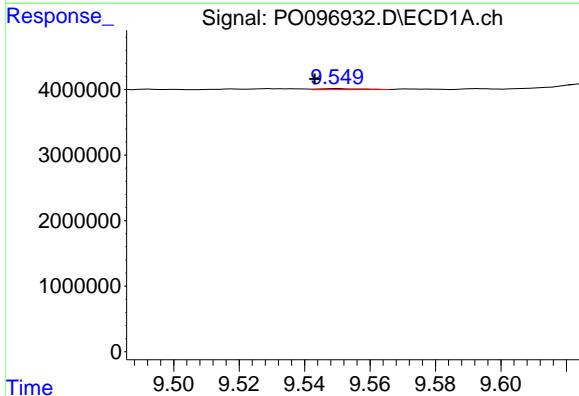
R.T.: 9.104 min
 Delta R.T.: 0.009 min
 Response: 477004
 Conc: 1.87 ng/ml

Instrument :
 ECD_O
 ClientSampleId :



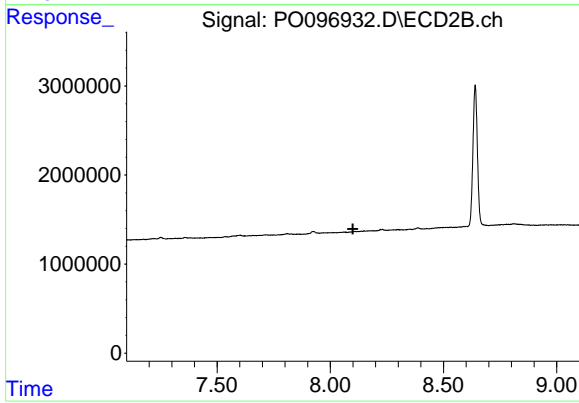
#43 AR-1268-3

R.T.: 7.811 min
 Delta R.T.: 0.002 min
 Response: 35619
 Conc: 0.25 ng/ml



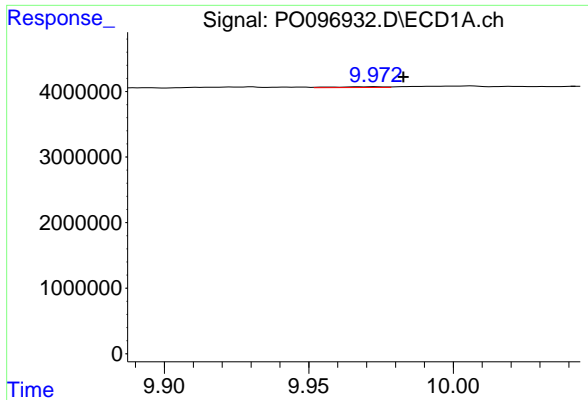
#44 AR-1268-4

R.T.: 9.550 min
 Delta R.T.: 0.007 min
 Response: 144770
 Conc: 1.56 ng/ml



#44 AR-1268-4

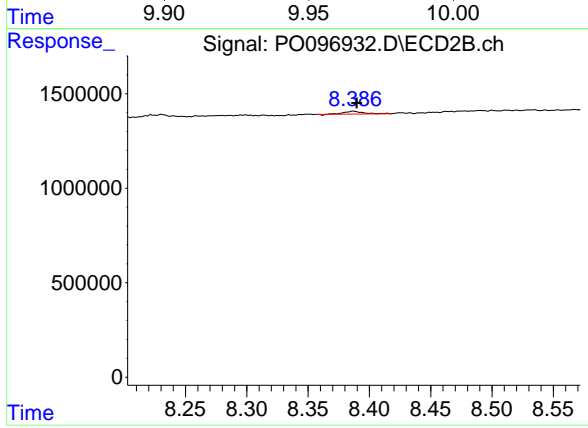
R.T.: 0.000 min
 Exp R.T. : 8.100 min
 Response: 0
 Conc: N.D.



#45 AR-1268-5

R.T.: 9.973 min
 Delta R.T.: -0.009 min
 Response: 143806
 Conc: 0.18 ng/ml

Instrument :
 ECD_O
 ClientSampleId :



#45 AR-1268-5

R.T.: 8.387 min
 Delta R.T.: -0.003 min
 Response: 157049
 Conc: 0.38 ng/ml