

Data Path : Z:\pestpcbsrv\HPCHEM1\ECD_0\Data\P0081023\
 Data File : P0096933.D
 Signal(s) : Signal #1: ECD1A.ch Signal #2: ECD2B.ch
 Acq On : 10 Aug 2023 18:24
 Operator : YP/AJ
 Sample : 03954-13
 Misc :
 ALS Vial : 30 Sample Multiplier: 1

Instrument :
 ECD_0
ClientSampleId :
 WC-19

Manual Integrations
APPROVED

Reviewed By :Yogesh Patel 08/11/2023
 Supervised By :Ankita Jodhani 08/11/2023

Integration File signal 1: autoint1.e
 Integration File signal 2: autoint2.e
 Quant Time: Aug 10 21:50:57 2023
 Quant Method : Z:\pestpcbsrv\HPCHEM1\ECD_0\methods\P0080723.M
 Quant Title : GC EXTRACTABLES
 QLast Update : Tue Aug 08 04:34:41 2023
 Response via : Initial Calibration
 Integrator: ChemStation

Volume Inj. : 2 µl
 Signal #1 Phase : ZB-MR1 Signal #2 Phase: ZB-MR2
 Signal #1 Info : 30Mx0.32mmx 0.50µ Signal #2 Info : 30M x 0.32mm x 0.25µm

Compound	RT#1	RT#2	Resp#1	Resp#2	ng/ml	ng/ml

System Monitoring Compounds						
1) SA Tetrachlo...	4.411	3.618	56724927	20252296	17.136m	15.299
2) SA Decachlor...	10.359	8.639	32672562	17027105	14.931	14.717

Target Compounds

(f)=RT Delta > 1/2 Window (#)=Amounts differ by > 25% (m)=manual int.

Data Path : Z:\pestpcbsrv\HPCHEM1\ECD_O\Data\PO081023\
 Data File : PO096933.D
 Signal(s) : Signal #1: ECD1A.ch Signal #2: ECD2B.ch
 Acq On : 10 Aug 2023 18:24
 Operator : YP/AJ
 Sample : 03954-13
 Misc :
 ALS Vial : 30 Sample Multiplier: 1

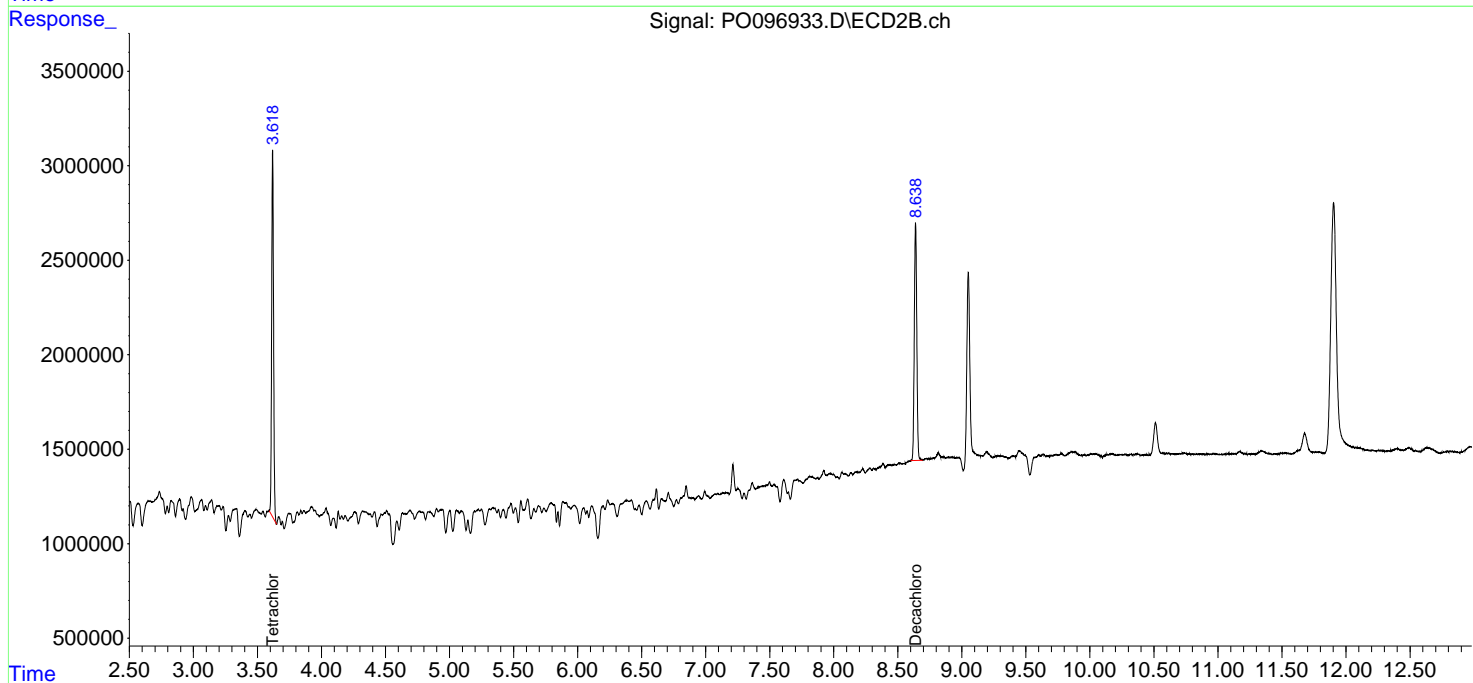
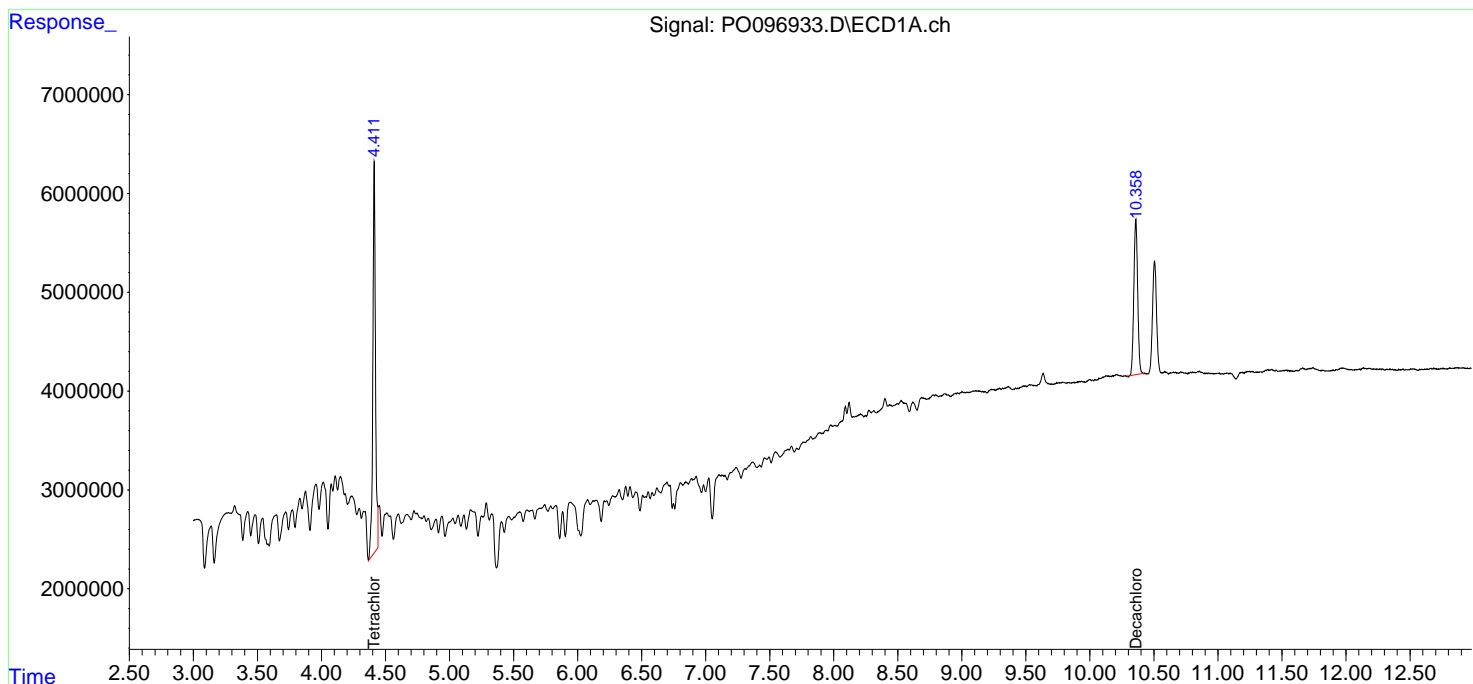
Instrument :
 ECD_O
 ClientSampleID :
 WC-19

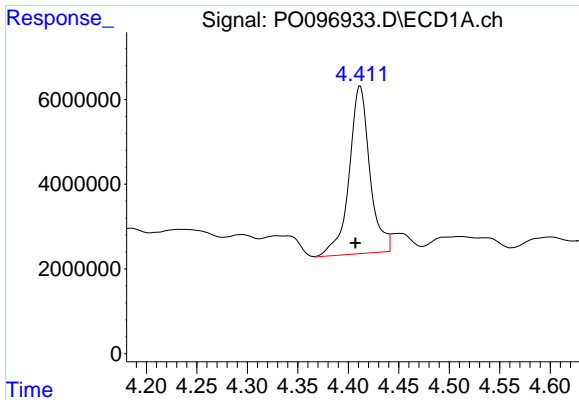
Manual Integrations
 APPROVED

Reviewed By :Yogesh Patel 08/11/2023
 Supervised By :Ankita Jodhani 08/11/2023

Integration File signal 1: autoint1.e
 Integration File signal 2: autoint2.e
 Quant Time: Aug 10 21:50:57 2023
 Quant Method : Z:\pestpcbsrv\HPCHEM1\ECD_O\methods\PO080723.M
 Quant Title : GC EXTRACTABLES
 QLast Update : Tue Aug 08 04:34:41 2023
 Response via : Initial Calibration
 Integrator: ChemStation

Volume Inj. : 2 µl
 Signal #1 Phase : ZB-MR1 Signal #2 Phase: ZB-MR2
 Signal #1 Info : 30Mx0.32mmx 0.50µ Signal #2 Info : 30M x 0.32mm x 0.25µm





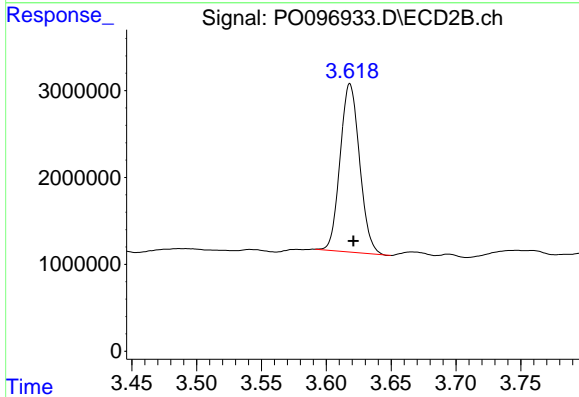
#1 Tetrachloro-m-xylene

R.T.: 4.411 min
 Delta R.T.: 0.004 min
 Response: 56724927
 Conc: 17.14 ng/ml

Instrument :
 ECD_O
 ClientSampleId :
 WC-19

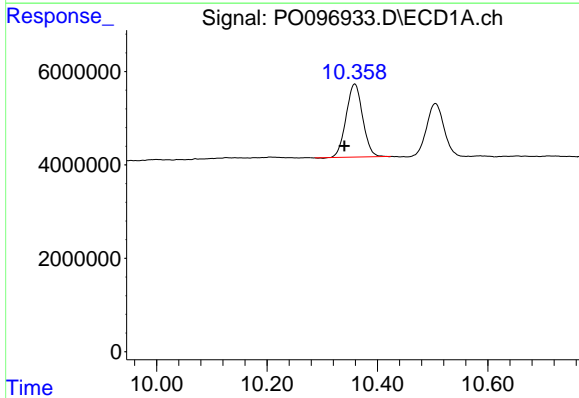
Manual Integrations
 APPROVED

Reviewed By :Yogesh Patel 08/11/2023
 Supervised By :Ankita Jodhani 08/11/2023



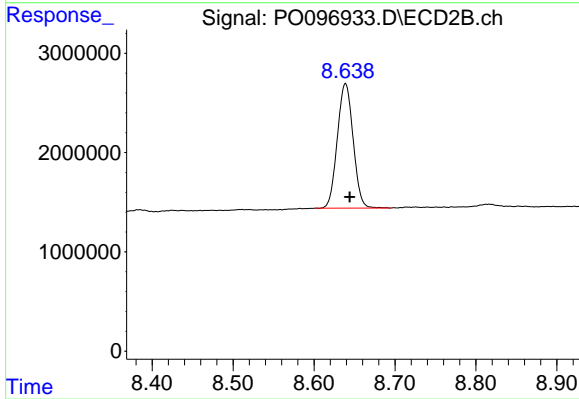
#1 Tetrachloro-m-xylene

R.T.: 3.618 min
 Delta R.T.: -0.003 min
 Response: 20252296
 Conc: 15.30 ng/ml



#2 Decachlorobiphenyl

R.T.: 10.359 min
 Delta R.T.: 0.019 min
 Response: 32672562
 Conc: 14.93 ng/ml



#2 Decachlorobiphenyl

R.T.: 8.639 min
 Delta R.T.: -0.005 min
 Response: 17027105
 Conc: 14.72 ng/ml