

Data Path : Z:\pestpcbsrv\HPCHEM1\ECD_0\Data\P0081023\
 Data File : P0096948.D
 Signal(s) : Signal #1: ECD1A.ch Signal #2: ECD2B.ch
 Acq On : 10 Aug 2023 22:38
 Operator : YP/AJ
 Sample : 03955-19
 Misc :
 ALS Vial : 40 Sample Multiplier: 1

Instrument :
 ECD_0
 ClientSampleId :
 WC-28

Integration File signal 1: autoint1.e
 Integration File signal 2: autoint2.e
 Quant Time: Aug 11 06:20:28 2023
 Quant Method : Z:\pestpcbsrv\HPCHEM1\ECD_0\methods\P0080723.M
 Quant Title : GC EXTRACTABLES
 QLast Update : Tue Aug 08 04:34:41 2023
 Response via : Initial Calibration
 Integrator: ChemStation

Volume Inj. : 2 µl
 Signal #1 Phase : ZB-MR1 Signal #2 Phase: ZB-MR2
 Signal #1 Info : 30Mx0.32mmx 0.50µ Signal #2 Info : 30M x 0.32mm x 0.25µm

Compound	RT#1	RT#2	Resp#1	Resp#2	ng/ml	ng/ml

System Monitoring Compounds						
1) SA Tetrachlo...	4.412	3.618	60507293	24542246	18.279	18.539
2) SA Decachlor...	10.357	8.638	38505431	19318871	17.597	16.698

Target Compounds

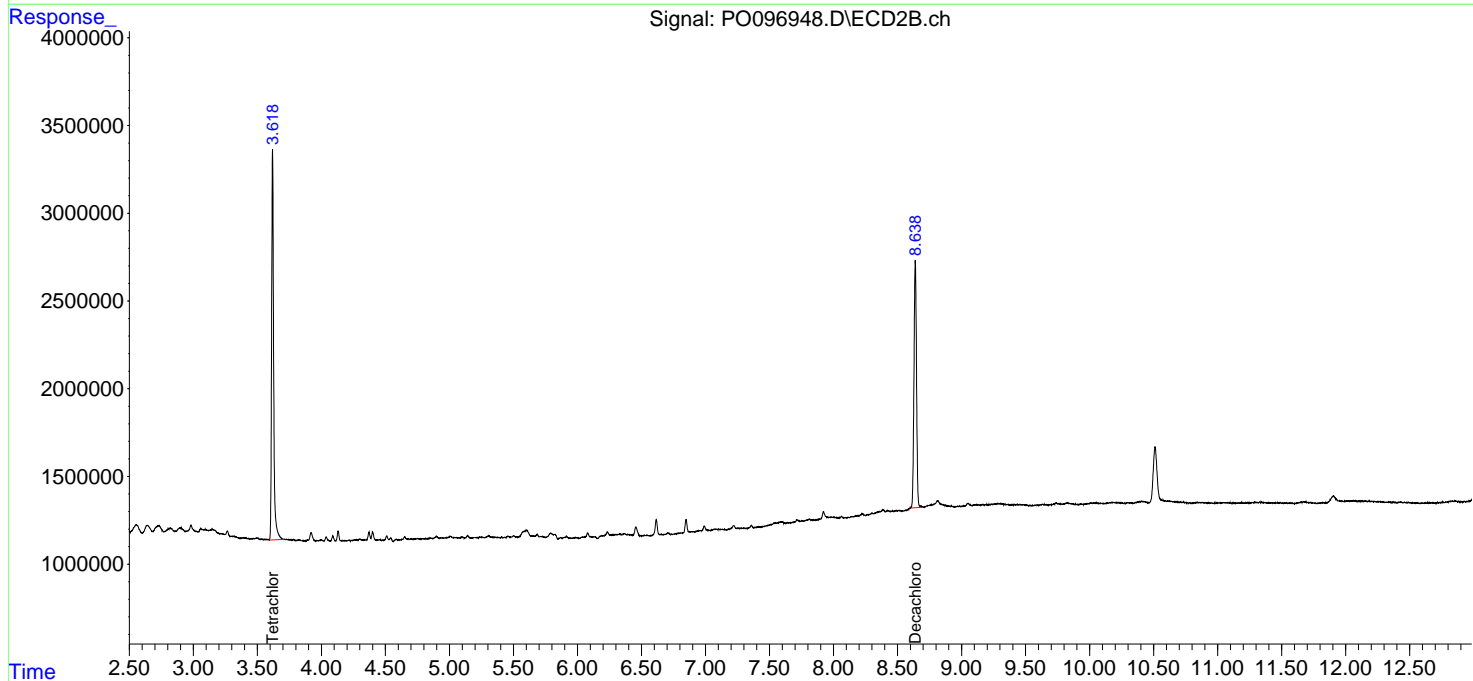
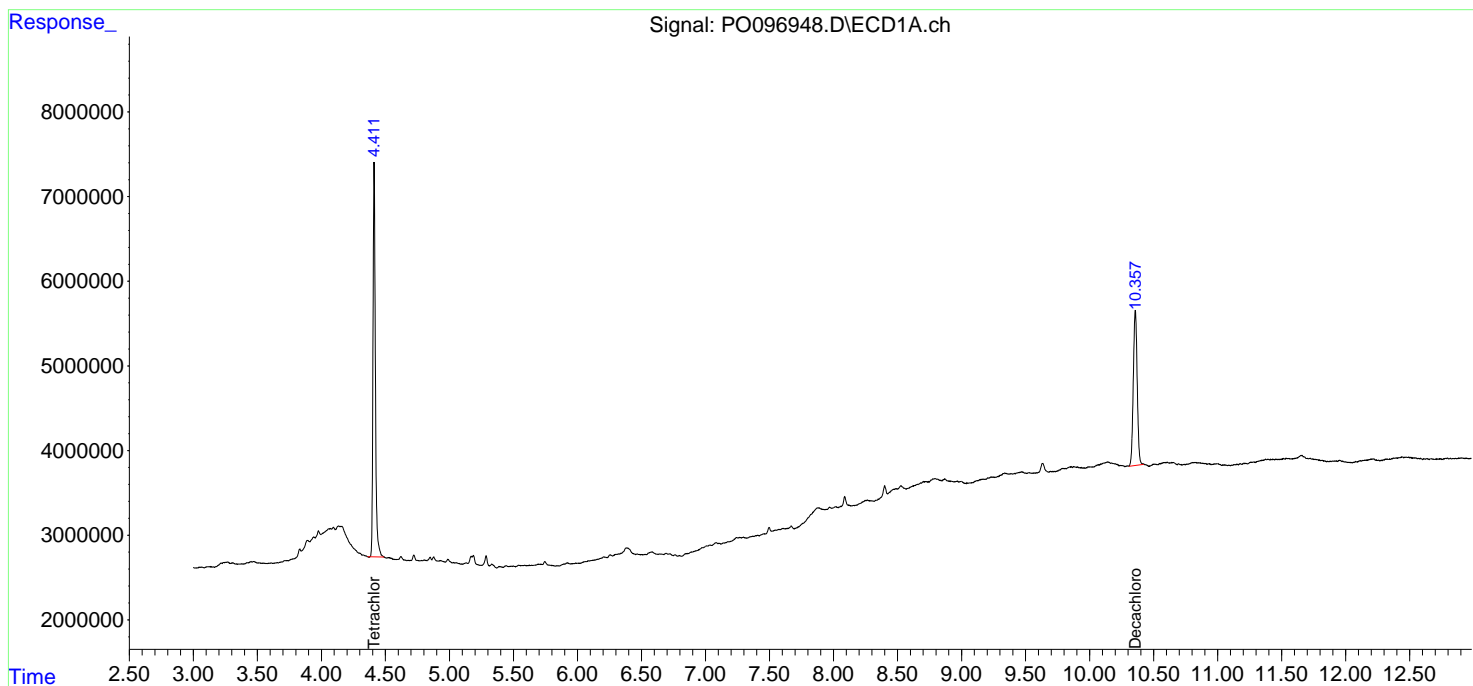
 (f)=RT Delta > 1/2 Window (#)=Amounts differ by > 25% (m)=manual int.

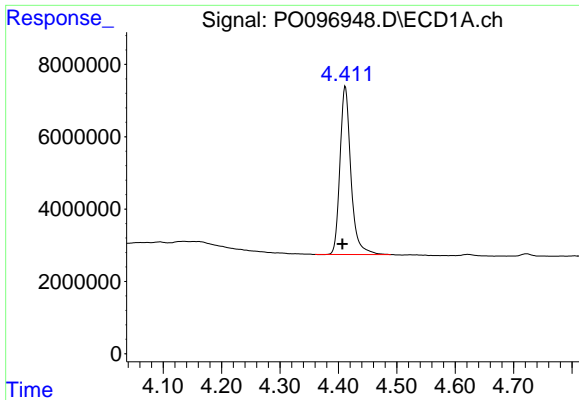
Data Path : Z:\pestpcbsrv\HPCHEM1\ECD_O\Data\P0081023\
 Data File : P0096948.D
 Signal(s) : Signal #1: ECD1A.ch Signal #2: ECD2B.ch
 Acq On : 10 Aug 2023 22:38
 Operator : YP/AJ
 Sample : 03955-19
 Misc :
 ALS Vial : 40 Sample Multiplier: 1

Instrument :
 ECD_O
 ClientSampleId :
 WC-28

Integration File signal 1: autoint1.e
 Integration File signal 2: autoint2.e
 Quant Time: Aug 11 06:20:28 2023
 Quant Method : Z:\pestpcbsrv\HPCHEM1\ECD_O\methods\P0080723.M
 Quant Title : GC EXTRACTABLES
 QLast Update : Tue Aug 08 04:34:41 2023
 Response via : Initial Calibration
 Integrator: ChemStation

Volume Inj. : 2 µl
 Signal #1 Phase : ZB-MR1 Signal #2 Phase: ZB-MR2
 Signal #1 Info : 30Mx0.32mmx 0.50µ Signal #2 Info : 30M x 0.32mm x 0.25µm

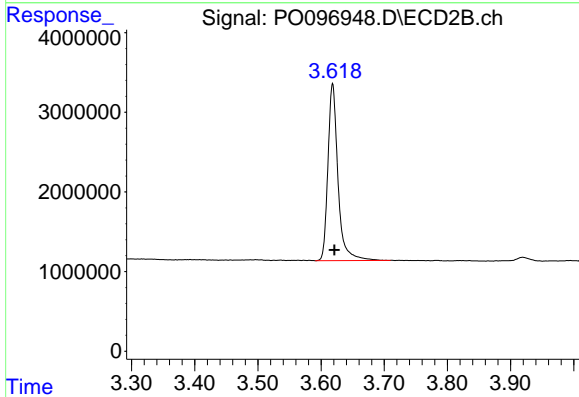




#1 Tetrachloro-m-xylene

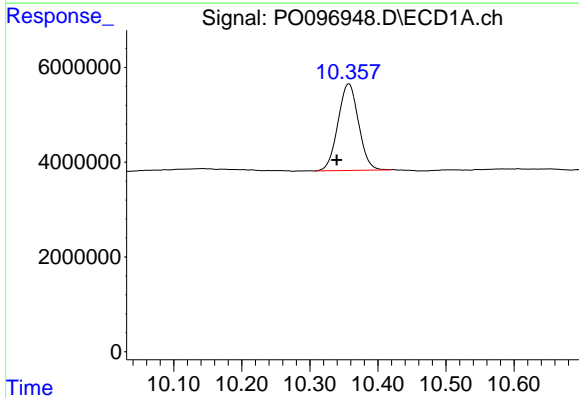
R.T.: 4.412 min
 Delta R.T.: 0.005 min
 Response: 60507293
 Conc: 18.28 ng/ml

Instrument :
 ECD_O
 ClientSampleId :
 WC-28



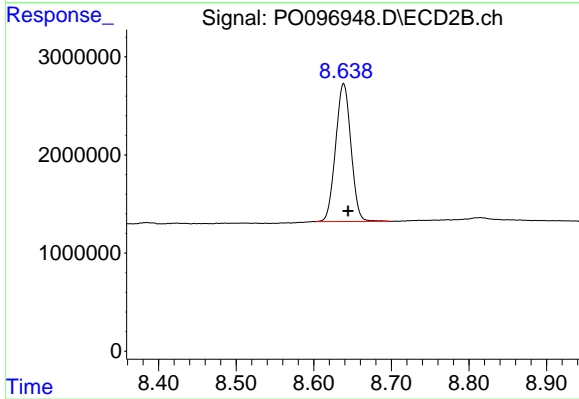
#1 Tetrachloro-m-xylene

R.T.: 3.618 min
 Delta R.T.: -0.003 min
 Response: 24542246
 Conc: 18.54 ng/ml



#2 Decachlorobiphenyl

R.T.: 10.357 min
 Delta R.T.: 0.018 min
 Response: 38505431
 Conc: 17.60 ng/ml



#2 Decachlorobiphenyl

R.T.: 8.638 min
 Delta R.T.: -0.006 min
 Response: 19318871
 Conc: 16.70 ng/ml