

Data Path : Z:\pestpcbsrv\HPCHEM1\ECD_0\Data\P0081120\
 Data File : P0070470.D
 Signal(s) : Signal #1: ECD1A.CH Signal #2: ECD2B.CH
 Acq On : 11 Aug 2020 16:13
 Operator : DD\AJ
 Sample : L3637-07
 Misc :
 ALS Vial : 25 Sample Multiplier: 1

Instrument :
 ECD_0
ClientSampleId :
 CAR-WASH-AREA-1

Manual Integrations
APPROVED
 mohammad
 8/12/2020 2:47:26 PM

Integration File signal 1: autoint1.e
 Integration File signal 2: autoint2.e
 Quant Time: Aug 12 03:19:02 2020
 Quant Method : Z:\pestpcbsrv\HPCHEM1\ECD_0\methods\P0080620.M
 Quant Title : GC EXTRACTABLES
 QLast Update : Thu Aug 06 13:04:06 2020
 Response via : Initial Calibration
 Integrator: ChemStation 6890 Scale Mode: Small noise peaks clipped

Volume Inj. : 2 µl
 Signal #1 Phase : ZB-MR1 Signal #2 Phase: ZB-MR2
 Signal #1 Info : 30Mx0.32mmx 0.50µ Signal #2 Info : 30M x 0.32mm x 0.25µm

Compound	RT#1	RT#2	Resp#1	Resp#2	ng/ml	ng/ml

System Monitoring Compounds						
1) SA Tetrachlo...	4.376	3.560	1425191	651324	21.553	14.783 #
2) SA Decachlor...	10.005	8.752	1153954	694174	13.477	12.506
Target Compounds						
31) L7 AR-1260-1	7.338	6.352	274432	248441	65.984	76.939
32) L7 AR-1260-2	7.607	6.553	603852	211547	100.567m	49.164m#
33) L7 AR-1260-3	7.962	6.697	179320	179995	34.841	49.161 #
34) L7 AR-1260-4	8.187	7.177	262947	104516	54.075	33.526 #
35) L7 AR-1260-5	8.504	7.428	351917	257206	31.573	31.834

(f)=RT Delta > 1/2 Window (#)=Amounts differ by > 25% (m)=manual int.

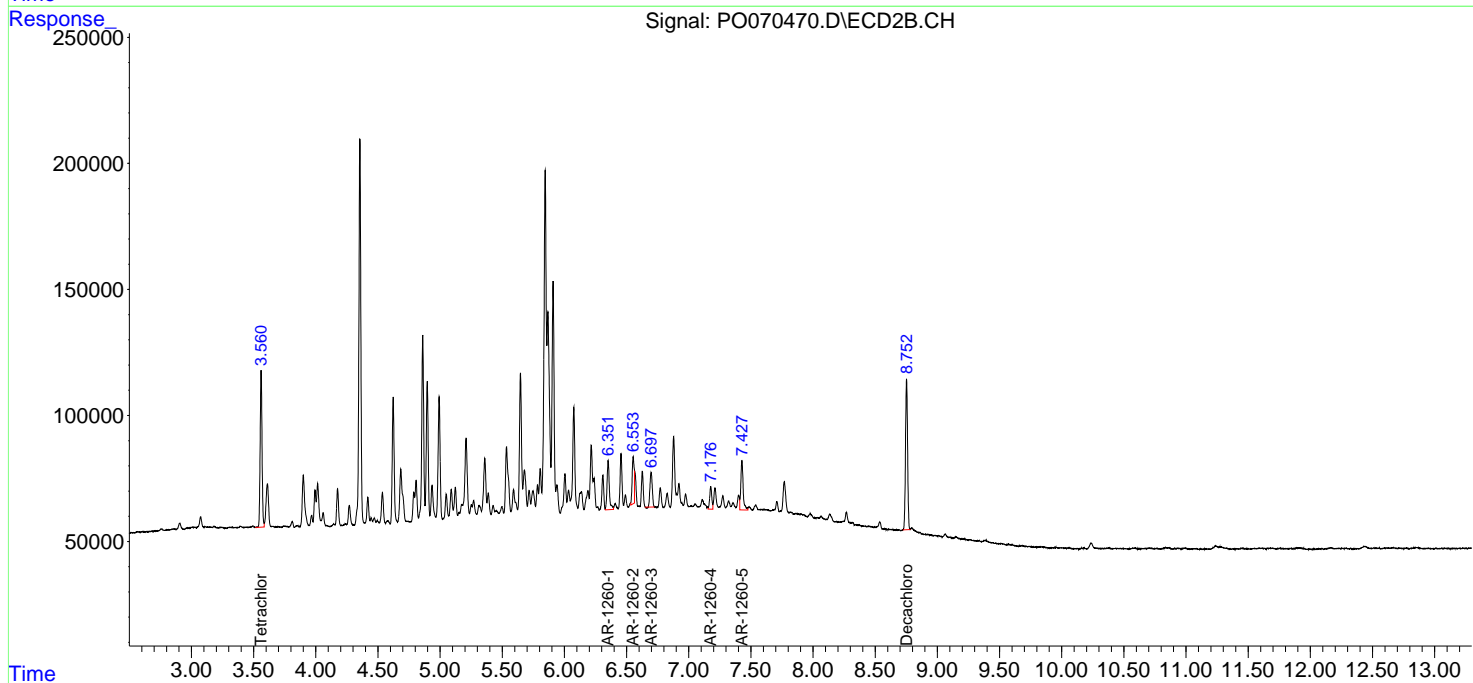
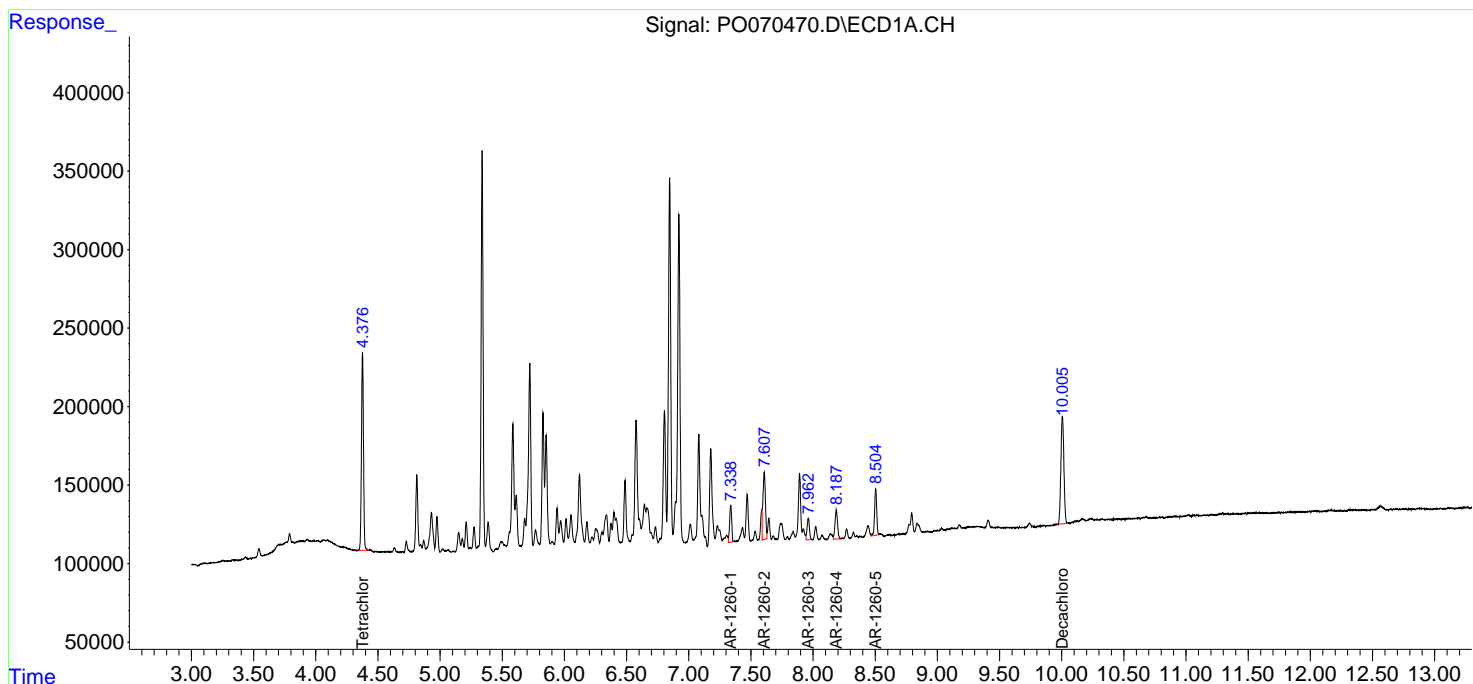
Data Path : Z:\pestpcbsrv\HPCHEM1\ECD_O\Data\PO081120\
 Data File : PO070470.D
 Signal(s) : Signal #1: ECD1A.CH Signal #2: ECD2B.CH
 Acq On : 11 Aug 2020 16:13
 Operator : DD\AJ
 Sample : L3637-07
 Misc :
 ALS Vial : 25 Sample Multiplier: 1

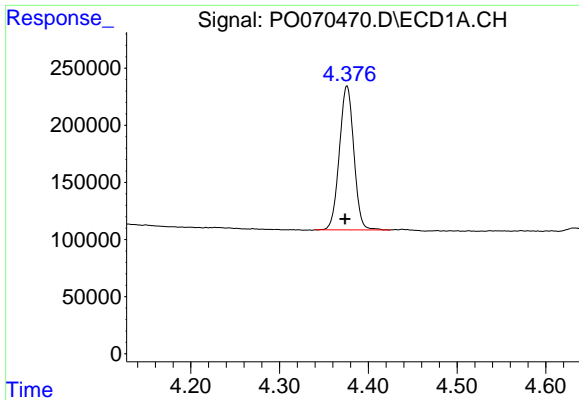
Instrument :
 ECD_O
Client Sampled :
 CAR-WASH-AREA-1

Manual Integrations
APPROVED
 mohammad
 8/12/2020 2:47:26 PM

Integration File signal 1: autoint1.e
 Integration File signal 2: autoint2.e
 Quant Time: Aug 12 03:19:02 2020
 Quant Method : Z:\pestpcbsrv\HPCHEM1\ECD_O\methods\PO080620.M
 Quant Title : GC EXTRACTABLES
 QLast Update : Thu Aug 06 13:04:06 2020
 Response via : Initial Calibration
 Integrator: ChemStation 6890 Scale Mode: Small noise peaks clipped

Volume Inj. : 2 µl
 Signal #1 Phase : ZB-MR1 Signal #2 Phase: ZB-MR2
 Signal #1 Info : 30Mx0.32mmx 0.50µ Signal #2 Info : 30M x 0.32mm x 0.25µm

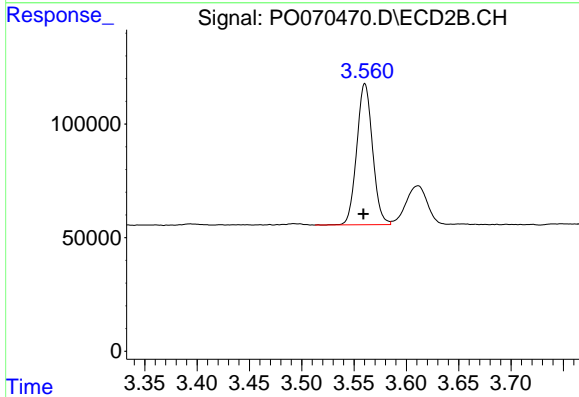




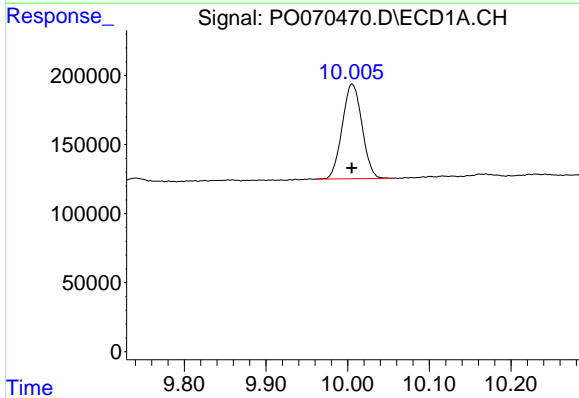
#1 Tetrachloro-m-xylene
 R.T.: 4.376 min
 Delta R.T.: 0.002 min
 Response: 1425191
 Conc: 21.55 ng/ml

Instrument :
 ECD_O
ClientSampleId :
 CAR-WASH-AREA-1

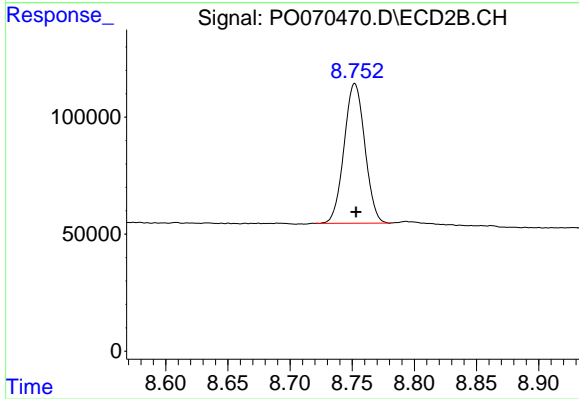
Manual Integrations
APPROVED
 mohammad
 8/12/2020 2:47:26 PM



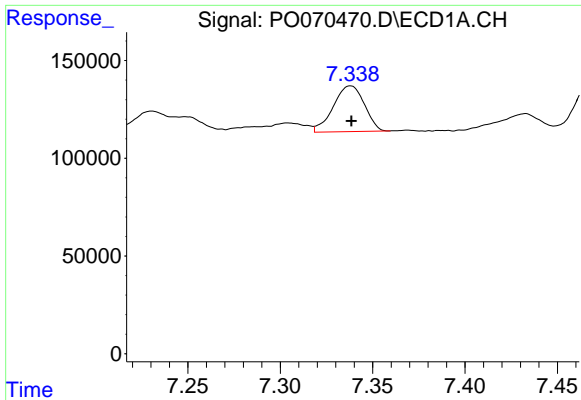
#1 Tetrachloro-m-xylene
 R.T.: 3.560 min
 Delta R.T.: 0.002 min
 Response: 651324
 Conc: 14.78 ng/ml



#2 Decachlorobiphenyl
 R.T.: 10.005 min
 Delta R.T.: 0.000 min
 Response: 1153954
 Conc: 13.48 ng/ml



#2 Decachlorobiphenyl
 R.T.: 8.752 min
 Delta R.T.: -0.001 min
 Response: 694174
 Conc: 12.51 ng/ml

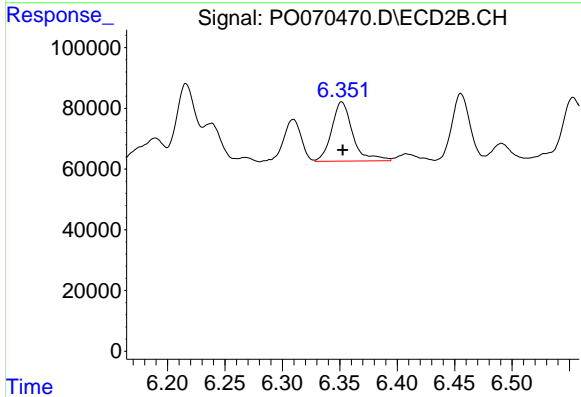


#31 AR-1260-1

R.T.: 7.338 min
 Delta R.T.: 0.000 min
 Response: 274432
 Conc: 65.98 ng/ml

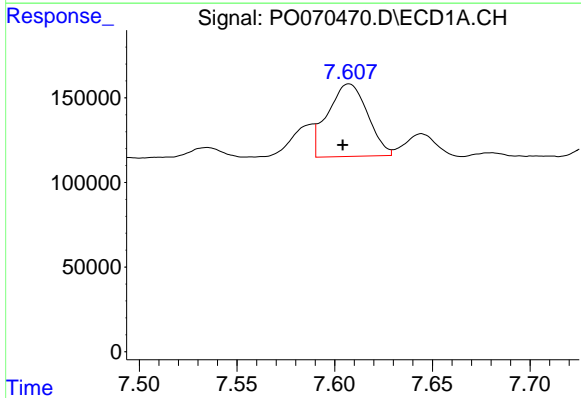
Instrument :
 ECD_O
ClientSampleId :
 CAR-WASH-AREA-1

Manual Integrations
APPROVED
 mohammad
 8/12/2020 2:47:26 PM



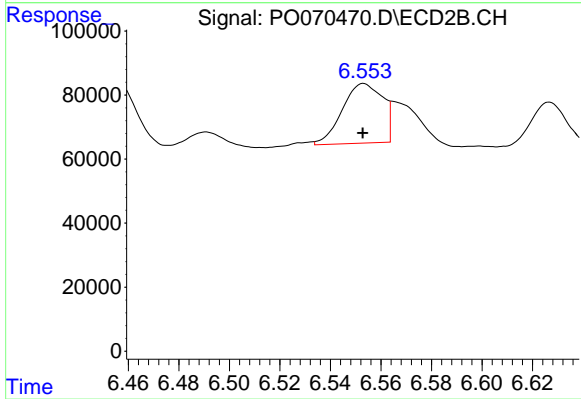
#31 AR-1260-1

R.T.: 6.352 min
 Delta R.T.: 0.000 min
 Response: 248441
 Conc: 76.94 ng/ml



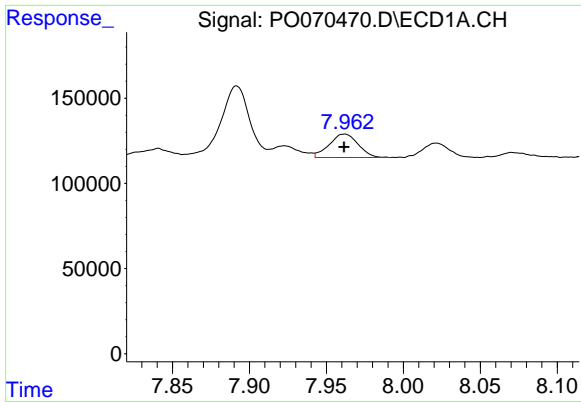
#32 AR-1260-2

R.T.: 7.607 min
 Delta R.T.: 0.003 min
 Response: 603852
 Conc: 100.57 ng/ml m



#32 AR-1260-2

R.T.: 6.553 min
 Delta R.T.: 0.000 min
 Response: 211547
 Conc: 49.16 ng/ml m

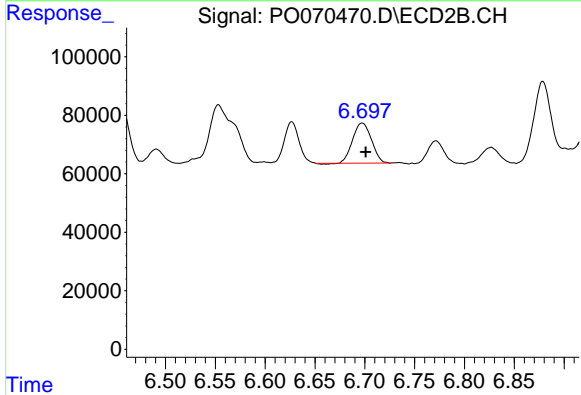


#33 AR-1260-3

R.T.: 7.962 min
 Delta R.T.: 0.000 min
 Response: 179320
 Conc: 34.84 ng/ml

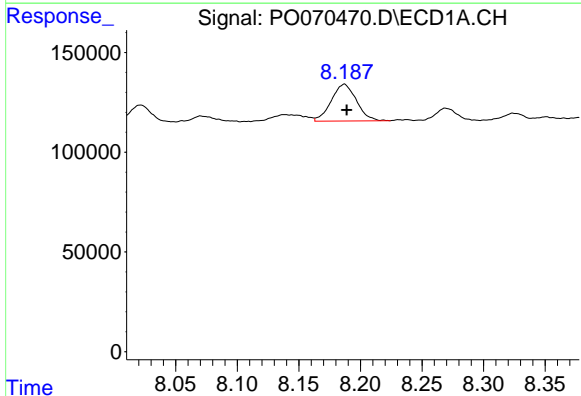
Instrument :
 ECD_O
 ClientSampleId :
 CAR-WASH-AREA-1

Manual Integrations
 APPROVED
 mohammad
 8/12/2020 2:47:26 PM



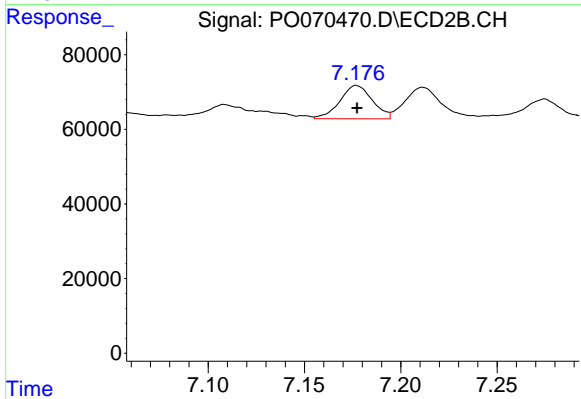
#33 AR-1260-3

R.T.: 6.697 min
 Delta R.T.: -0.003 min
 Response: 179995
 Conc: 49.16 ng/ml



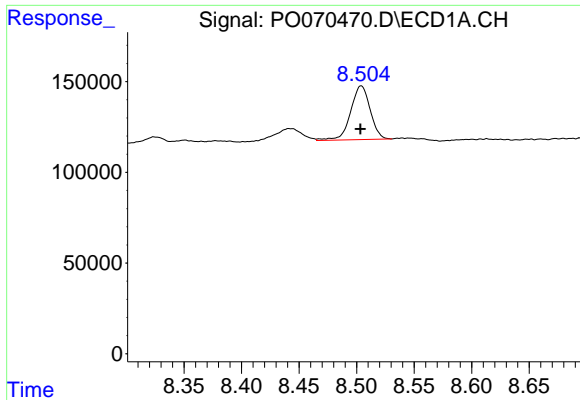
#34 AR-1260-4

R.T.: 8.187 min
 Delta R.T.: -0.002 min
 Response: 262947
 Conc: 54.07 ng/ml



#34 AR-1260-4

R.T.: 7.177 min
 Delta R.T.: 0.000 min
 Response: 104516
 Conc: 33.53 ng/ml



#35 AR-1260-5

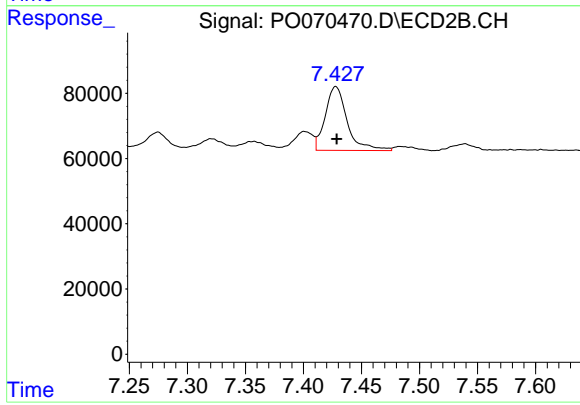
R.T.: 8.504 min
 Delta R.T.: 0.000 min
 Response: 351917
 Conc: 31.57 ng/ml

Instrument :
 ECD_O
 ClientSampleId :
 CAR-WASH-AREA-1

Manual Integrations
 APPROVED

mohammad

8/12/2020 2:47:26 PM



#35 AR-1260-5

R.T.: 7.428 min
 Delta R.T.: 0.000 min
 Response: 257206
 Conc: 31.83 ng/ml