

Data Path : Z:\pestpcbsrv\HPCHEM1\ECD\_0\Data\P0081121\  
 Data File : P0080358.D  
 Signal(s) : Signal #1: ECD1A.CH Signal #2: ECD2B.CH  
 Acq On : 11 Aug 2021 10:49  
 Operator : DD\AJ  
 Sample : M3279-08  
 Misc :  
 ALS Vial : 9 Sample Multiplier: 1

Instrument :  
 ECD\_0  
 ClientSampleId :  
 20210580-COM-3

Integration File signal 1: autoint1.e  
 Integration File signal 2: autoint2.e  
 Quant Time: Aug 12 03:46:16 2021  
 Quant Method : Z:\pestpcbsrv\HPCHEM1\ECD\_0\methods\P0081021.M  
 Quant Title : GC EXTRACTABLES  
 QLast Update : Wed Aug 11 05:48:32 2021  
 Response via : Initial Calibration  
 Integrator: ChemStation 6890 Scale Mode: Small noise peaks clipped

Volume Inj. : 2 µl  
 Signal #1 Phase : ZB-MR1 Signal #2 Phase: ZB-MR2  
 Signal #1 Info : 30Mx0.32mmx 0.50µ Signal #2 Info : 30M x 0.32mm x 0.25µm

Compound	RT#1	RT#2	Resp#1	Resp#2	ng/ml	ng/ml
-----						
System Monitoring Compounds						
1) SA Tetrachlo...	4.992	4.106	1480942	525647	21.387	21.090
2) SA Decachlor...	11.096	9.508	1066889	469614	20.611	20.705
Target Compounds						
3) L1 AR-1016-1	6.324	0.000	23058	0	9.000	N.D. #
4) L1 AR-1016-2	6.347	0.000	41834	0	11.821	N.D. #
5) L1 AR-1016-3	6.412	0.000	15068	0	6.987	N.D. #
6) L1 AR-1016-4	6.519	0.000	10503	0	5.925	N.D. #
7) L1 AR-1016-5	6.835	0.000	29494	0	17.138	N.D. #
9) L2 AR-1221-2	5.347	0.000	18120	0	33.102	N.D. #
13) L3 AR-1232-3	6.347	0.000	41834	0	25.736	N.D. #
14) L3 AR-1232-4	6.519	0.000	10503	0	14.130	N.D. #
15) L3 AR-1232-5	6.620	0.000	17908	0	34.326	N.D. #
16) L4 AR-1242-1	6.324	0.000	23058	0	11.821	N.D. #
17) L4 AR-1242-2	6.347	0.000	41834	0	15.516	N.D. #
18) L4 AR-1242-3	6.412	0.000	15068	0	9.032	N.D. #
19) L4 AR-1242-4	6.519	0.000	10503	0	7.810	N.D. #
20) L4 AR-1242-5	7.306	0.000	28346	0	19.356	N.D. #
21) L5 AR-1248-1	6.324	0.000	23058	0	15.237	N.D. #
22) L5 AR-1248-2	6.620	0.000	17908	0	8.829	N.D. #
23) L5 AR-1248-3	6.835	0.000	29494	0	12.463	N.D. #
24) L5 AR-1248-4	7.267	0.000	23747	0	8.732	N.D. #
25) L5 AR-1248-5	7.306	0.000	28346	0	10.749	N.D. #
26) L6 AR-1254-1	7.237	0.000	29240	0	11.279	N.D. #
27) L6 AR-1254-2	7.473	0.000	41449	0	10.563	N.D. #
28) L6 AR-1254-3	7.852	0.000	14116	0	3.459	N.D. #
30) L6 AR-1254-5	8.578	0.000	16383	0	5.295	N.D. #
32) L7 AR-1260-2	8.284	0.000	9132	0	2.748	N.D. #
33) L7 AR-1260-3	8.648	0.000	10843	0	4.334	N.D. #
35) L7 AR-1260-5	9.222	0.000	10307	0	1.809	N.D. #
36) L8 AR-1262-1	8.648	0.000	10843	0	2.836	N.D. #
37) L8 AR-1262-2	9.222	0.000	10307	0	1.524	N.D. #

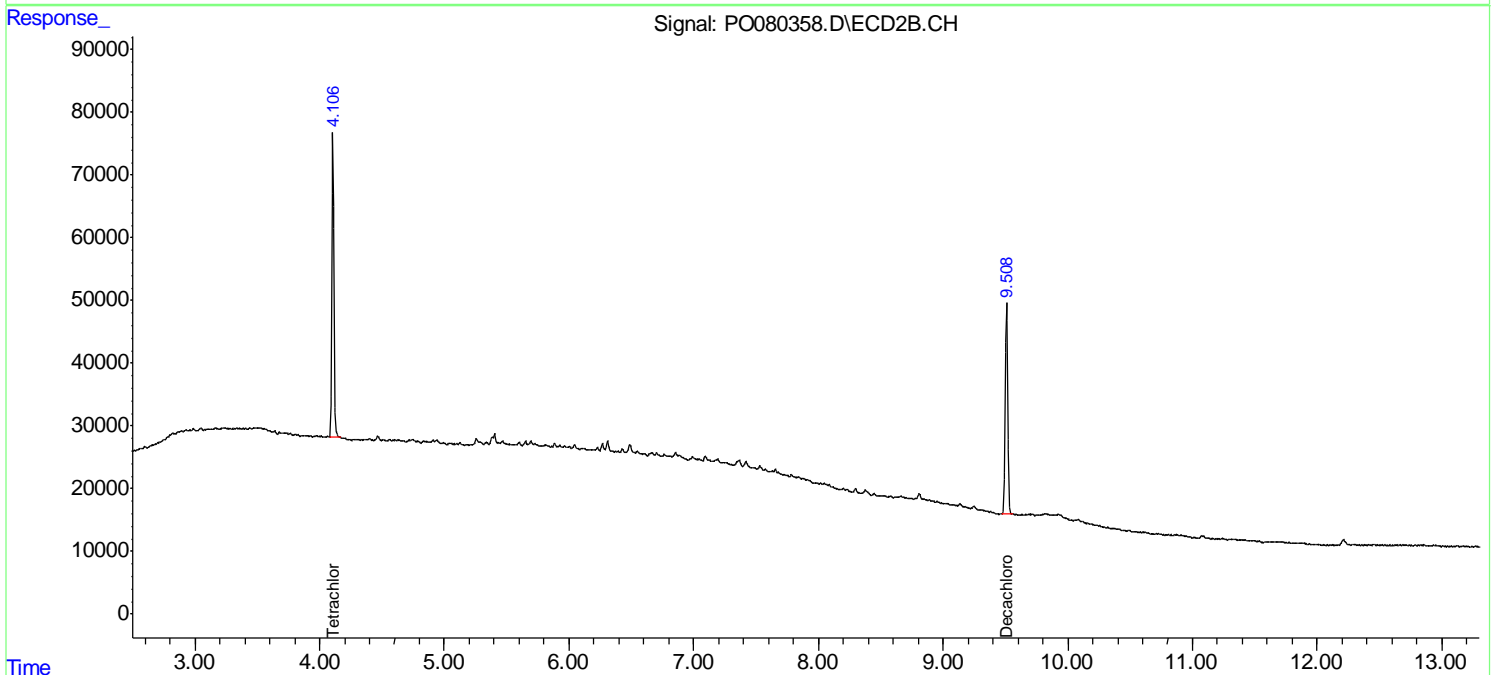
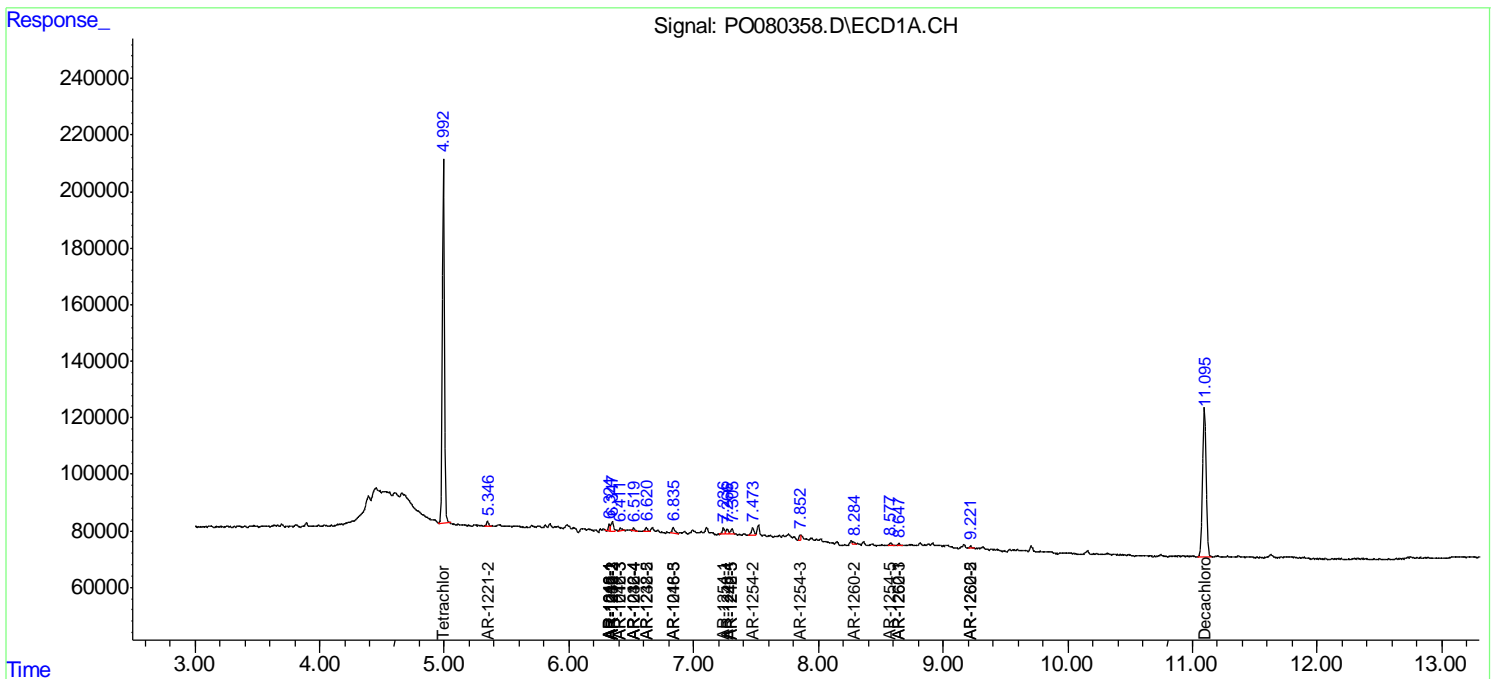
(f)=RT Delta > 1/2 Window (#)=Amounts differ by > 25% (m)=manual int.

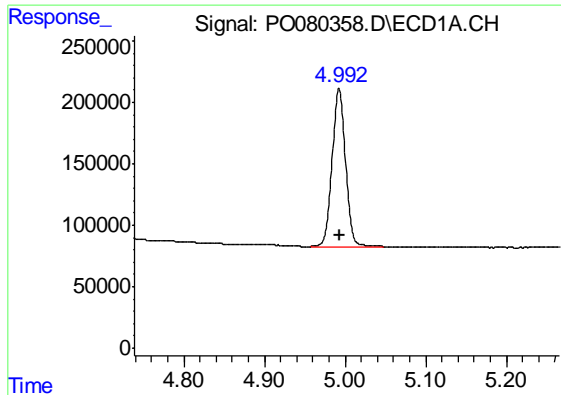
Data Path : Z:\pestpcbsrv\HPCHEM1\ECD\_O\Data\PO081121\  
 Data File : PO080358.D  
 Signal(s) : Signal #1: ECD1A.CH Signal #2: ECD2B.CH  
 Acq On : 11 Aug 2021 10:49  
 Operator : DD\AJ  
 Sample : M3279-08  
 Misc :  
 ALS Vial : 9 Sample Multiplier: 1

Instrument :  
 ECD\_O  
 ClientSampled :  
 20210580-COM-3

Integration File signal 1: autoint1.e  
 Integration File signal 2: autoint2.e  
 Quant Time: Aug 12 03:46:16 2021  
 Quant Method : Z:\pestpcbsrv\HPCHEM1\ECD\_O\methods\PO081021.M  
 Quant Title : GC EXTRACTABLES  
 QLast Update : Wed Aug 11 05:48:32 2021  
 Response via : Initial Calibration  
 Integrator: ChemStation 6890 Scale Mode: Small noise peaks clipped

Volume Inj. : 2 µl  
 Signal #1 Phase : ZB-MR1 Signal #2 Phase: ZB-MR2  
 Signal #1 Info : 30Mx0.32mmx 0.50µ Signal #2 Info : 30M x 0.32mm x 0.25µm

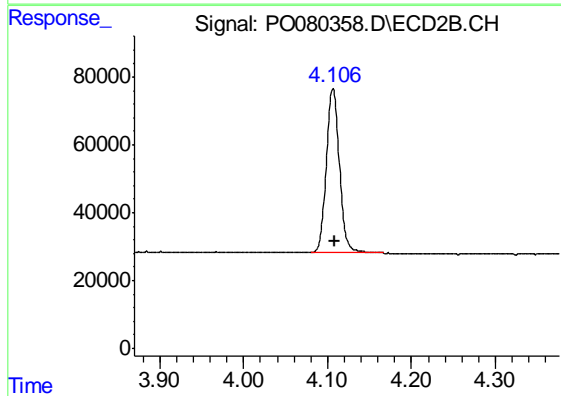




#1 Tetrachloro-m-xylene

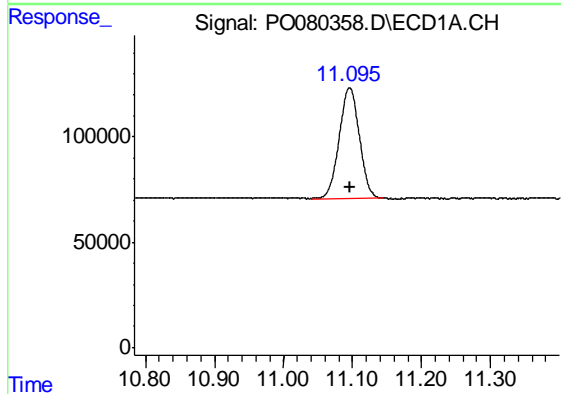
R.T.: 4.992 min  
Delta R.T.: 0.000 min  
Response: 1480942  
Conc: 21.39 ng/ml

Instrument :  
ECD\_O  
ClientSampleId :  
20210580-COM-3



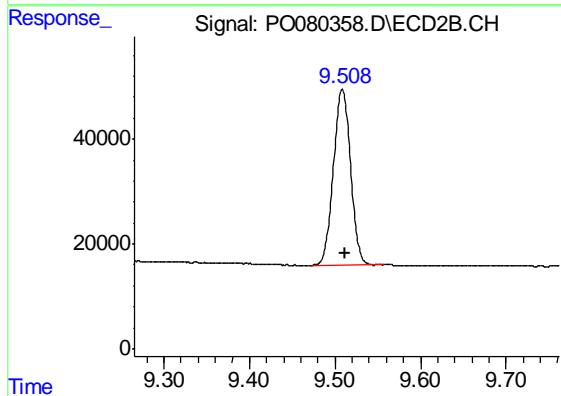
#1 Tetrachloro-m-xylene

R.T.: 4.106 min  
Delta R.T.: -0.002 min  
Response: 525647  
Conc: 21.09 ng/ml



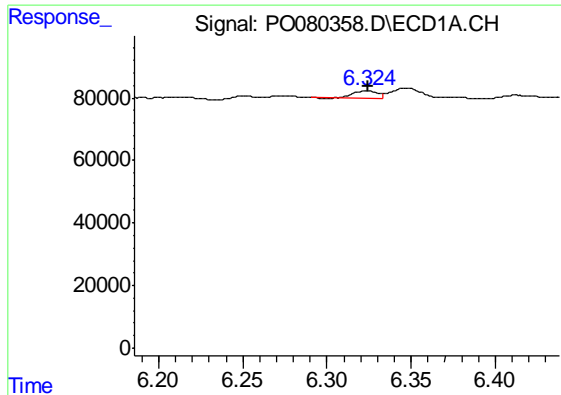
#2 Decachlorobiphenyl

R.T.: 11.096 min  
Delta R.T.: 0.000 min  
Response: 1066889  
Conc: 20.61 ng/ml



#2 Decachlorobiphenyl

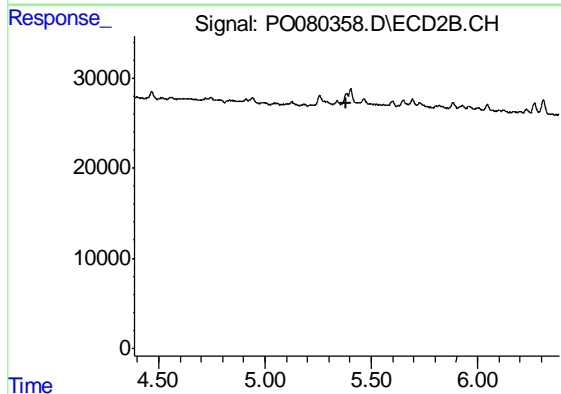
R.T.: 9.508 min  
Delta R.T.: -0.003 min  
Response: 469614  
Conc: 20.70 ng/ml



#3 AR-1016-1

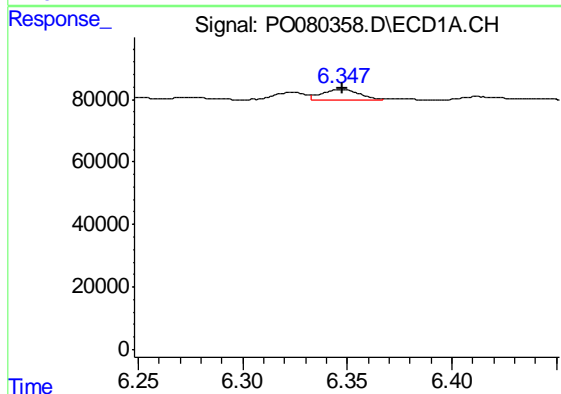
R.T.: 6.324 min  
 Delta R.T.: 0.000 min  
 Response: 23058  
 Conc: 9.00 ng/ml

Instrument :  
 ECD\_O  
 ClientSampleId :  
 20210580-COM-3



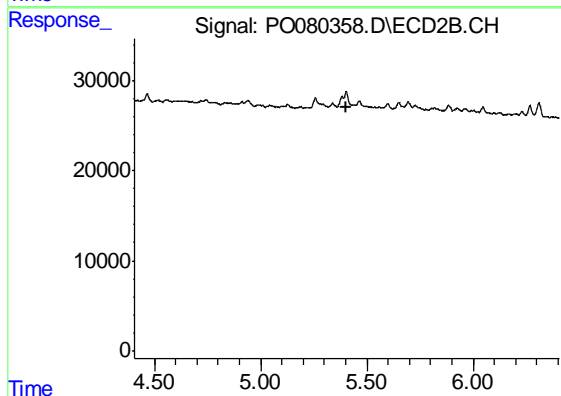
#3 AR-1016-1

R.T.: 0.000 min  
 Exp R.T. : 5.385 min  
 Response: 0  
 Conc: N.D.



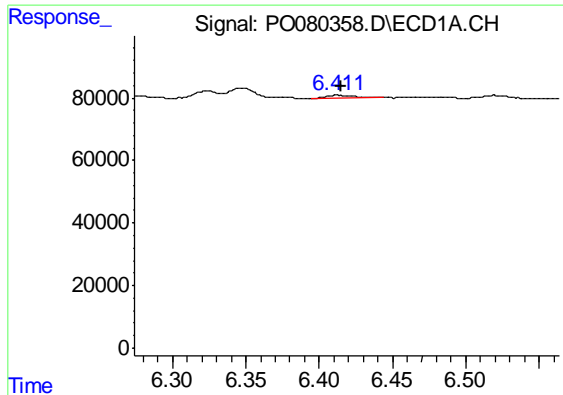
#4 AR-1016-2

R.T.: 6.347 min  
 Delta R.T.: 0.000 min  
 Response: 41834  
 Conc: 11.82 ng/ml



#4 AR-1016-2

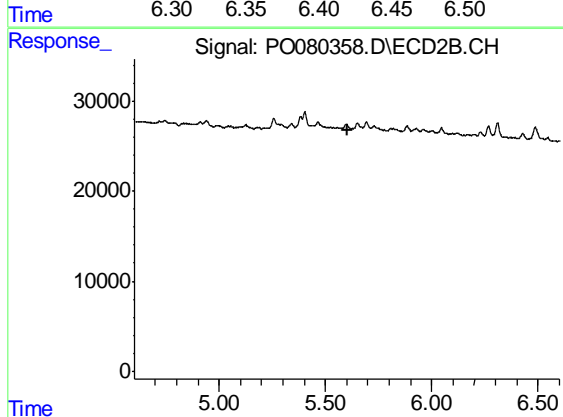
R.T.: 0.000 min  
 Exp R.T. : 5.406 min  
 Response: 0  
 Conc: N.D.



#5 AR-1016-3

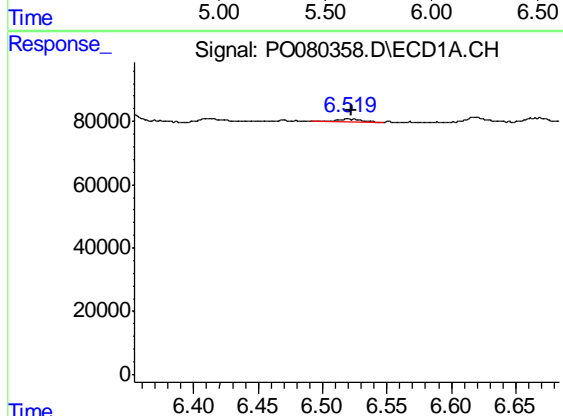
R.T.: 6.412 min  
 Delta R.T.: -0.003 min  
 Response: 15068  
 Conc: 6.99 ng/ml

Instrument :  
 ECD\_O  
 ClientSampleId :  
 20210580-COM-3



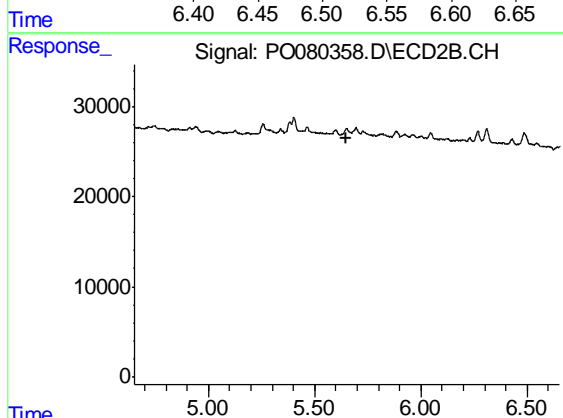
#5 AR-1016-3

R.T.: 0.000 min  
 Exp R.T. : 5.601 min  
 Response: 0  
 Conc: N.D.



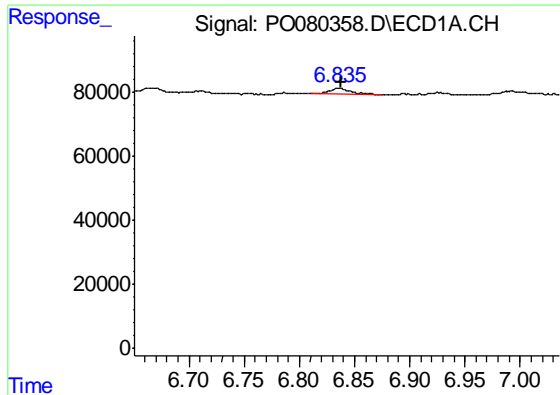
#6 AR-1016-4

R.T.: 6.519 min  
 Delta R.T.: -0.003 min  
 Response: 10503  
 Conc: 5.93 ng/ml



#6 AR-1016-4

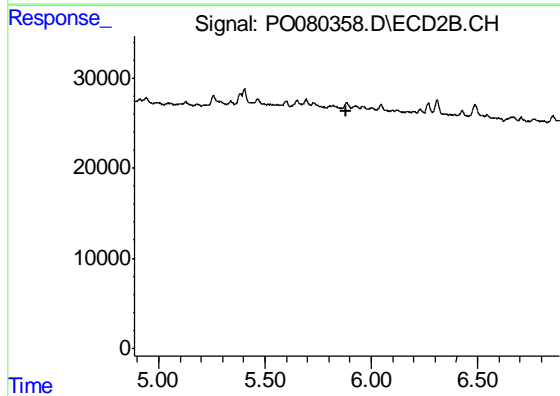
R.T.: 0.000 min  
 Exp R.T. : 5.652 min  
 Response: 0  
 Conc: N.D.



#7 AR-1016-5

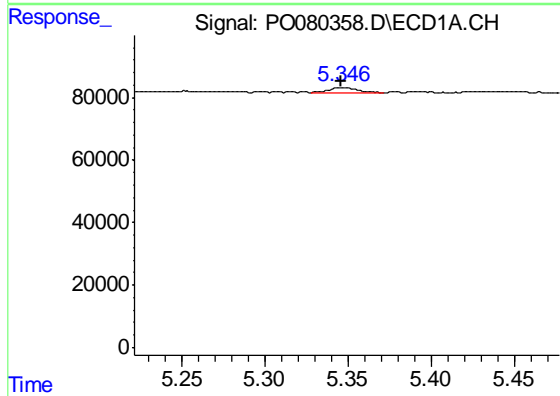
R.T.: 6.835 min  
 Delta R.T.: -0.003 min  
 Response: 29494  
 Conc: 17.14 ng/ml

Instrument :  
 ECD\_O  
 ClientSampleId :  
 20210580-COM-3



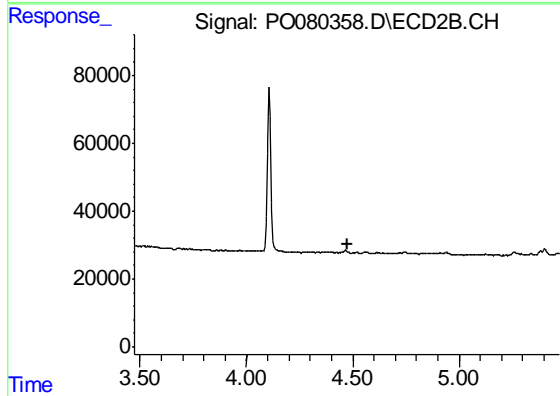
#7 AR-1016-5

R.T.: 0.000 min  
 Exp R.T. : 5.885 min  
 Response: 0  
 Conc: N.D.



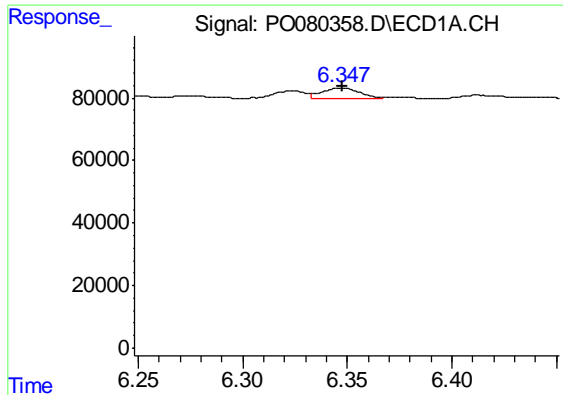
#9 AR-1221-2

R.T.: 5.347 min  
 Delta R.T.: 0.000 min  
 Response: 18120  
 Conc: 33.10 ng/ml



#9 AR-1221-2

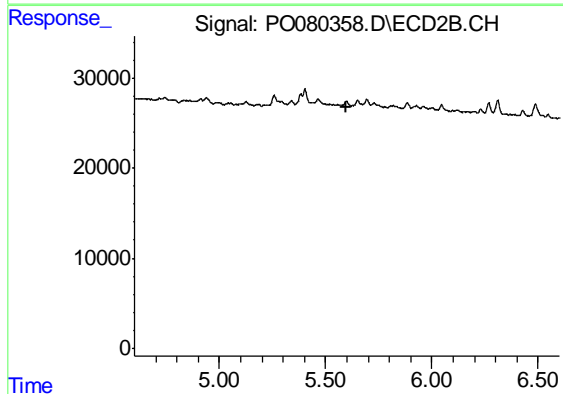
R.T.: 0.000 min  
 Exp R.T. : 4.473 min  
 Response: 0  
 Conc: N.D.



#13 AR-1232-3

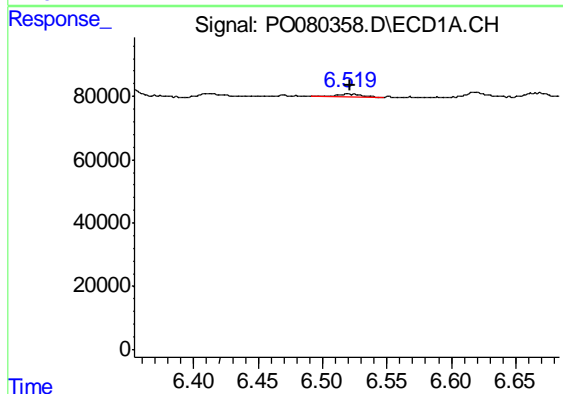
R.T.: 6.347 min  
 Delta R.T.: 0.000 min  
 Response: 41834  
 Conc: 25.74 ng/ml

Instrument :  
 ECD\_O  
 ClientSampleId :  
 20210580-COM-3



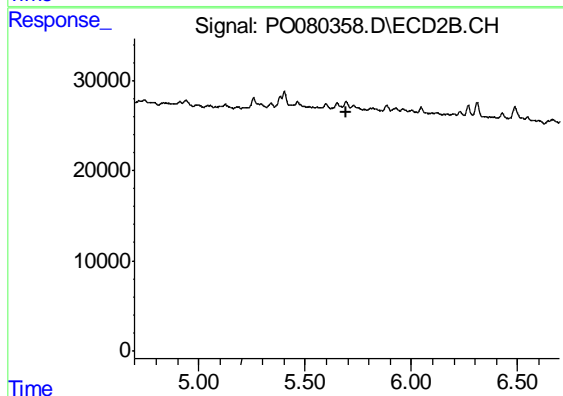
#13 AR-1232-3

R.T.: 0.000 min  
 Exp R.T. : 5.600 min  
 Response: 0  
 Conc: N.D.



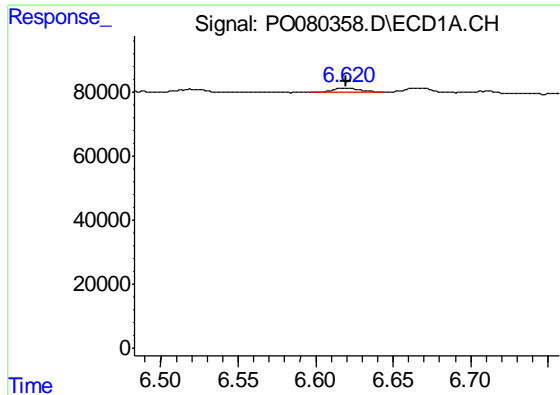
#14 AR-1232-4

R.T.: 6.519 min  
 Delta R.T.: -0.002 min  
 Response: 10503  
 Conc: 14.13 ng/ml



#14 AR-1232-4

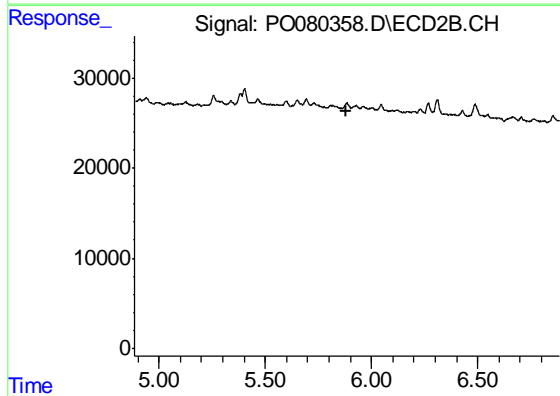
R.T.: 0.000 min  
 Exp R.T. : 5.696 min  
 Response: 0  
 Conc: N.D.



#15 AR-1232-5

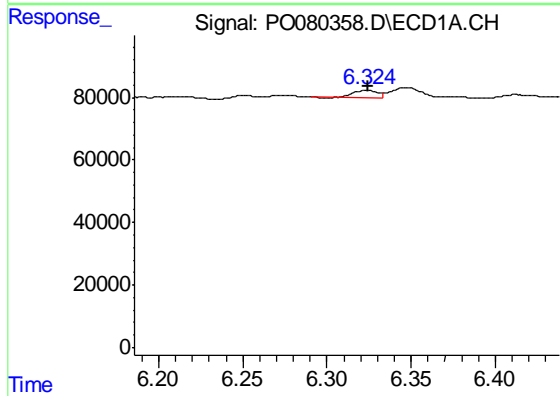
R.T.: 6.620 min  
 Delta R.T.: 0.000 min  
 Response: 17908  
 Conc: 34.33 ng/ml

Instrument :  
 ECD\_O  
 ClientSampleId :  
 20210580-COM-3



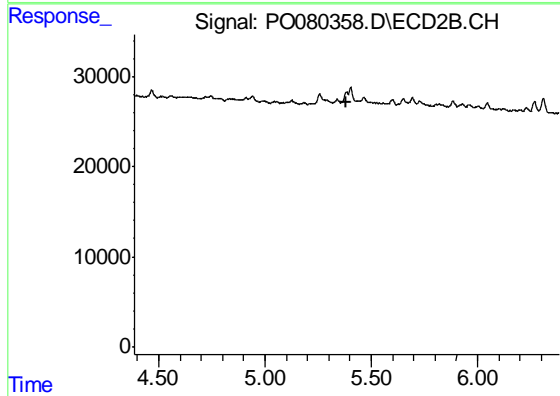
#15 AR-1232-5

R.T.: 0.000 min  
 Exp R.T. : 5.884 min  
 Response: 0  
 Conc: N.D.



#16 AR-1242-1

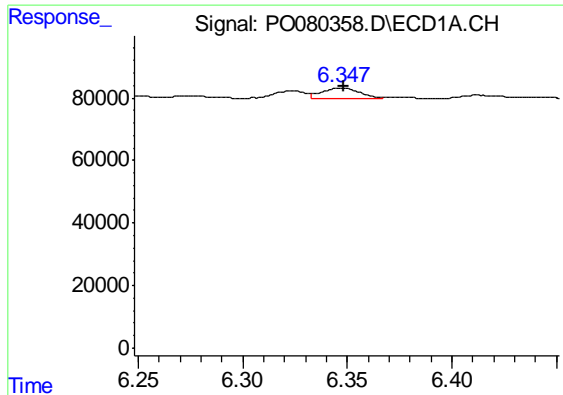
R.T.: 6.324 min  
 Delta R.T.: 0.000 min  
 Response: 23058  
 Conc: 11.82 ng/ml



#16 AR-1242-1

R.T.: 0.000 min  
 Exp R.T. : 5.385 min  
 Response: 0  
 Conc: N.D.

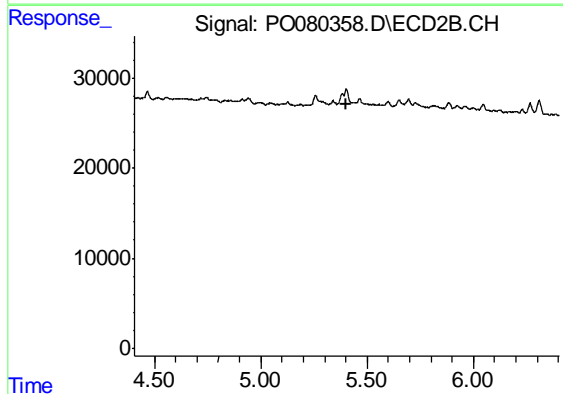




#17 AR-1242-2

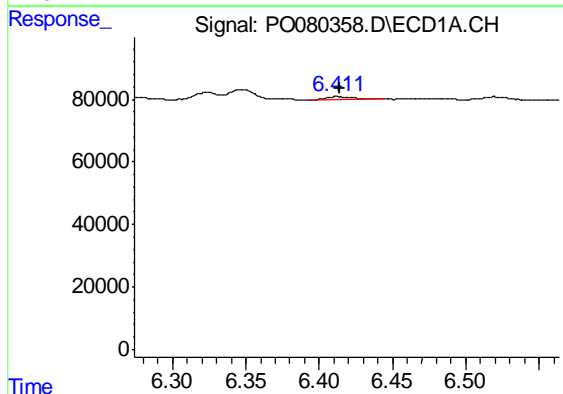
R.T.: 6.347 min  
 Delta R.T.: -0.001 min  
 Response: 41834  
 Conc: 15.52 ng/ml

Instrument :  
 ECD\_O  
 ClientSampled :  
 20210580-COM-3



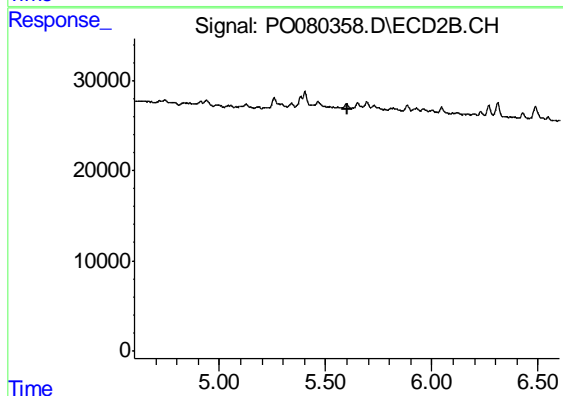
#17 AR-1242-2

R.T.: 0.000 min  
 Exp R.T. : 5.405 min  
 Response: 0  
 Conc: N.D.



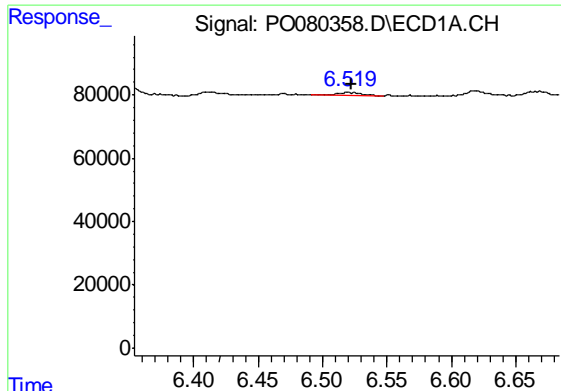
#18 AR-1242-3

R.T.: 6.412 min  
 Delta R.T.: -0.002 min  
 Response: 15068  
 Conc: 9.03 ng/ml



#18 AR-1242-3

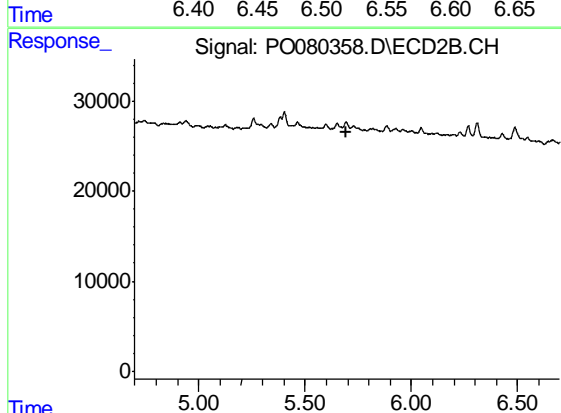
R.T.: 0.000 min  
 Exp R.T. : 5.601 min  
 Response: 0  
 Conc: N.D.



#19 AR-1242-4

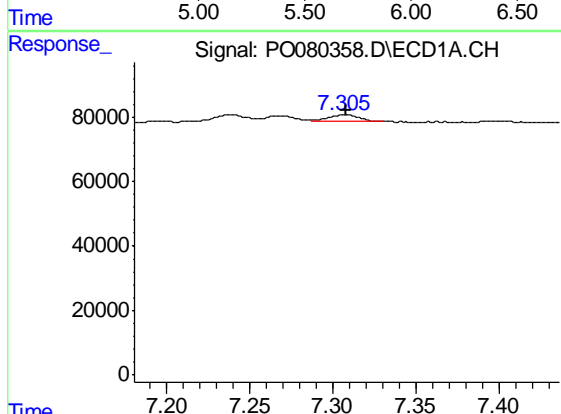
R.T.: 6.519 min  
 Delta R.T.: -0.003 min  
 Response: 10503  
 Conc: 7.81 ng/ml

Instrument :  
 ECD\_O  
 ClientSampleId :  
 20210580-COM-3



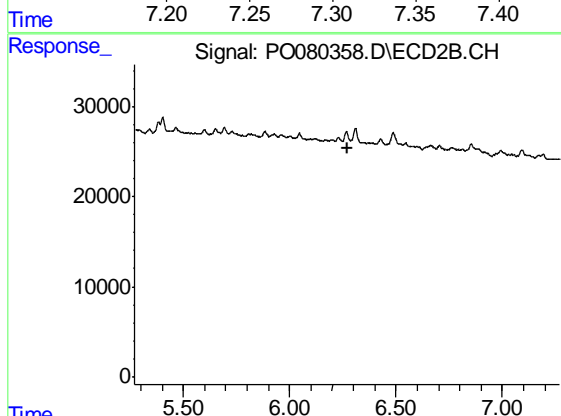
#19 AR-1242-4

R.T.: 0.000 min  
 Exp R.T. : 5.697 min  
 Response: 0  
 Conc: N.D.



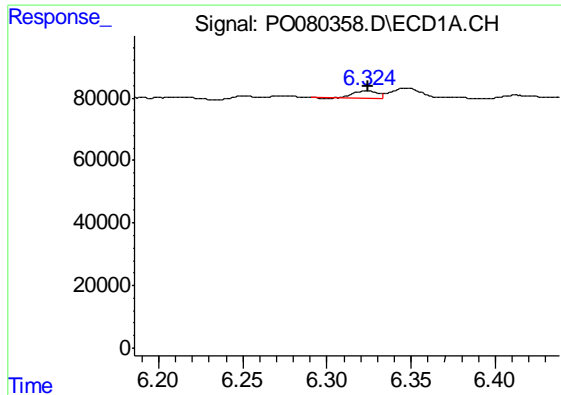
#20 AR-1242-5

R.T.: 7.306 min  
 Delta R.T.: -0.003 min  
 Response: 28346  
 Conc: 19.36 ng/ml



#20 AR-1242-5

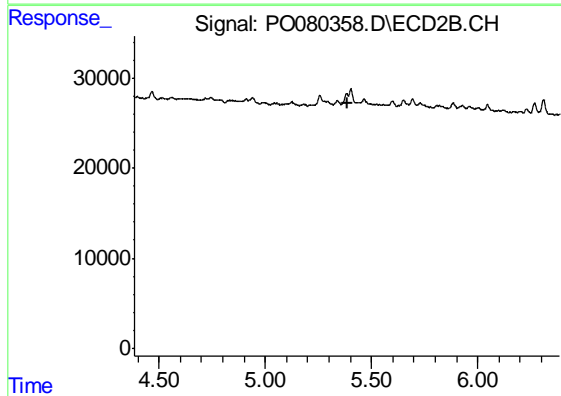
R.T.: 0.000 min  
 Exp R.T. : 6.269 min  
 Response: 0  
 Conc: N.D.



#21 AR-1248-1

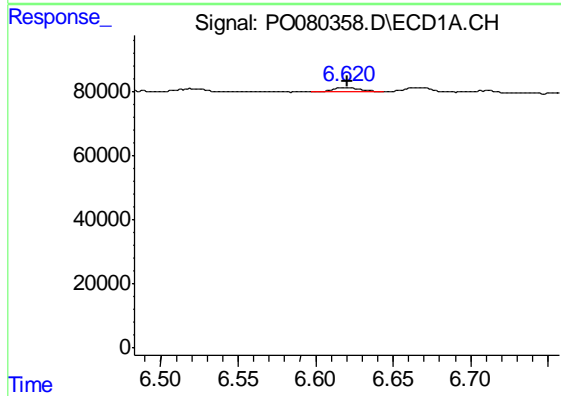
R.T.: 6.324 min  
 Delta R.T.: 0.000 min  
 Response: 23058  
 Conc: 15.24 ng/ml

Instrument :  
 ECD\_O  
 ClientSampleId :  
 20210580-COM-3



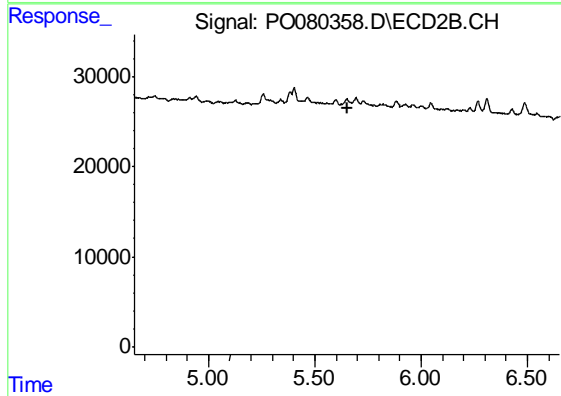
#21 AR-1248-1

R.T.: 0.000 min  
 Exp R.T. : 5.385 min  
 Response: 0  
 Conc: N.D.



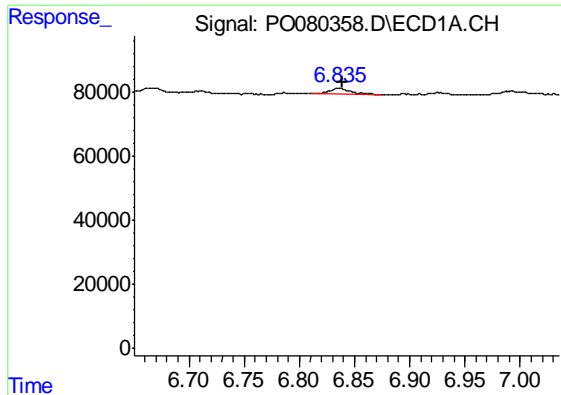
#22 AR-1248-2

R.T.: 6.620 min  
 Delta R.T.: 0.000 min  
 Response: 17908  
 Conc: 8.83 ng/ml



#22 AR-1248-2

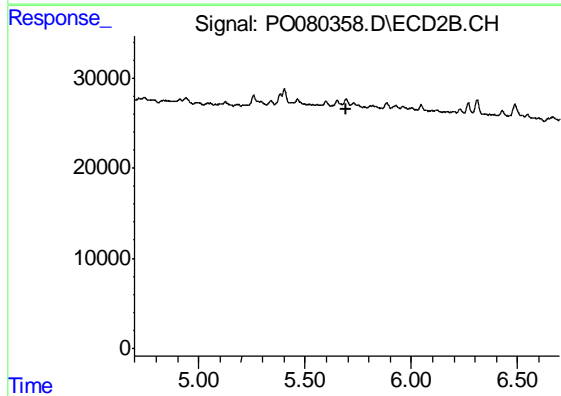
R.T.: 0.000 min  
 Exp R.T. : 5.651 min  
 Response: 0  
 Conc: N.D.



#23 AR-1248-3

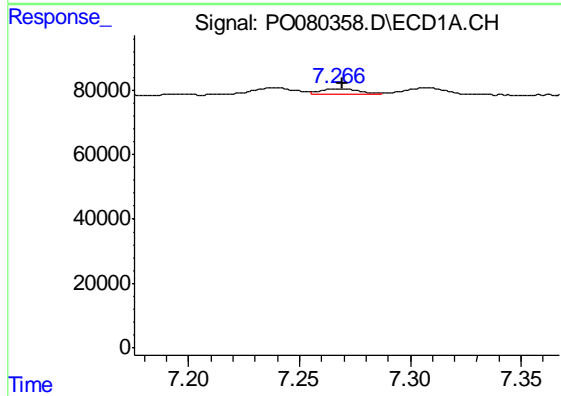
R.T.: 6.835 min  
 Delta R.T.: -0.004 min  
 Response: 29494  
 Conc: 12.46 ng/ml

Instrument :  
 ECD\_O  
 ClientSampleId :  
 20210580-COM-3



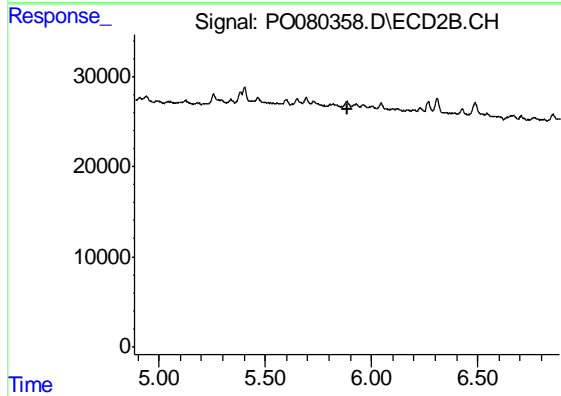
#23 AR-1248-3

R.T.: 0.000 min  
 Exp R.T. : 5.697 min  
 Response: 0  
 Conc: N.D.



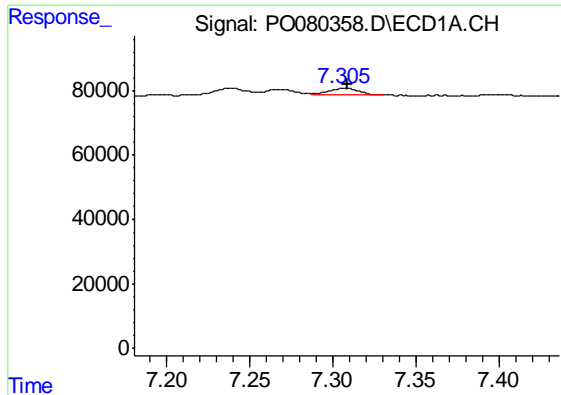
#24 AR-1248-4

R.T.: 7.267 min  
 Delta R.T.: -0.002 min  
 Response: 23747  
 Conc: 8.73 ng/ml



#24 AR-1248-4

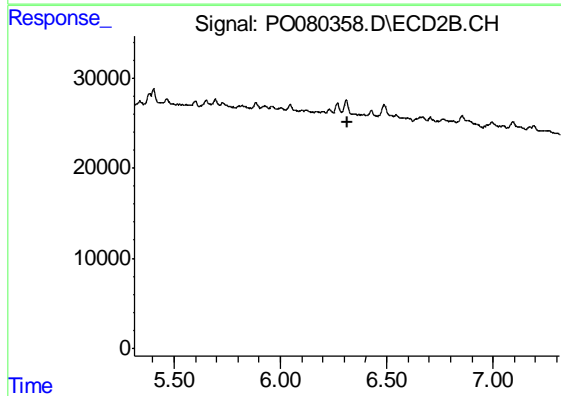
R.T.: 0.000 min  
 Exp R.T. : 5.885 min  
 Response: 0  
 Conc: N.D.



#25 AR-1248-5

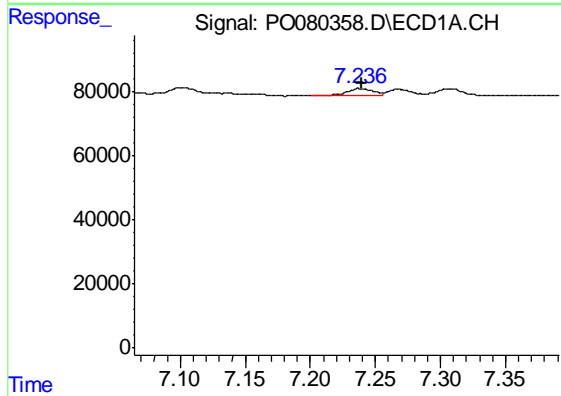
R.T.: 7.306 min  
 Delta R.T.: -0.003 min  
 Response: 28346  
 Conc: 10.75 ng/ml

Instrument :  
 ECD\_O  
 ClientSampleId :  
 20210580-COM-3



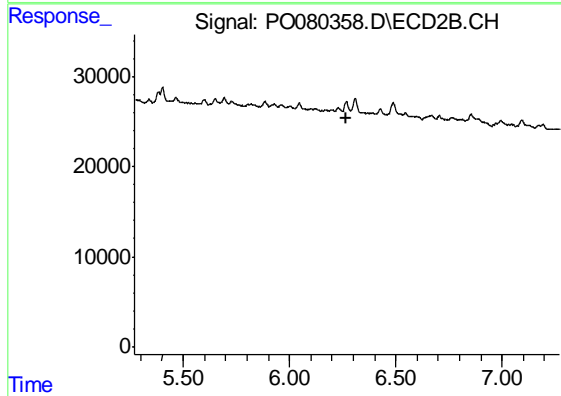
#25 AR-1248-5

R.T.: 0.000 min  
 Exp R.T. : 6.313 min  
 Response: 0  
 Conc: N.D.



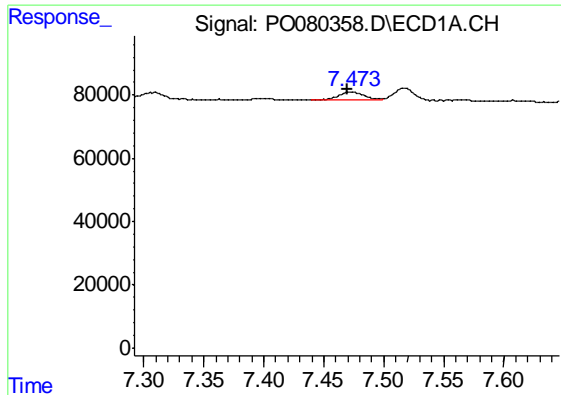
#26 AR-1254-1

R.T.: 7.237 min  
 Delta R.T.: -0.003 min  
 Response: 29240  
 Conc: 11.28 ng/ml



#26 AR-1254-1

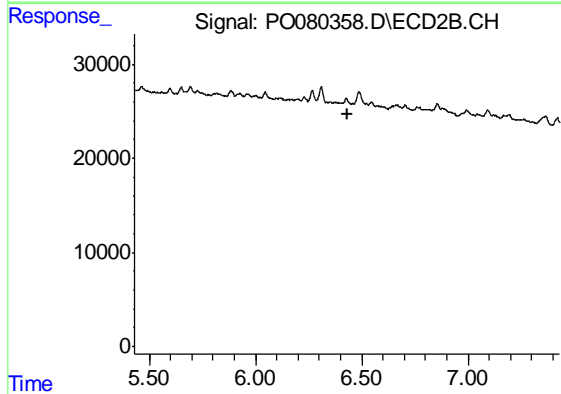
R.T.: 0.000 min  
 Exp R.T. : 6.270 min  
 Response: 0  
 Conc: N.D.



#27 AR-1254-2

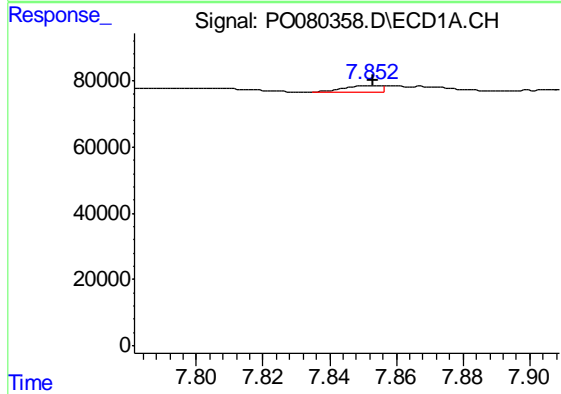
R.T.: 7.473 min  
 Delta R.T.: 0.003 min  
 Response: 41449  
 Conc: 10.56 ng/ml

Instrument :  
 ECD\_O  
 ClientSampleId :  
 20210580-COM-3



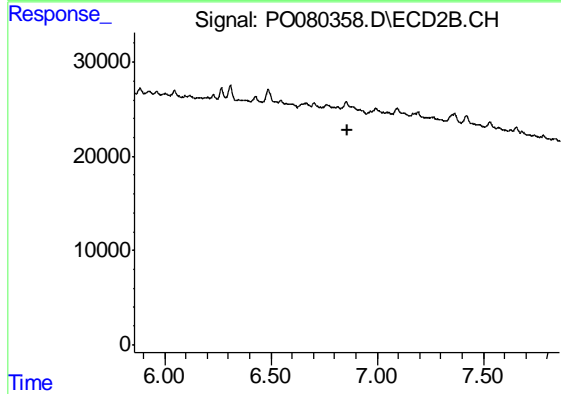
#27 AR-1254-2

R.T.: 0.000 min  
 Exp R.T. : 6.430 min  
 Response: 0  
 Conc: N.D.



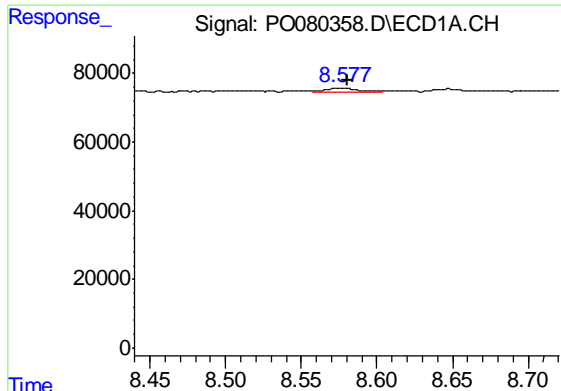
#28 AR-1254-3

R.T.: 7.852 min  
 Delta R.T.: 0.000 min  
 Response: 14116  
 Conc: 3.46 ng/ml



#28 AR-1254-3

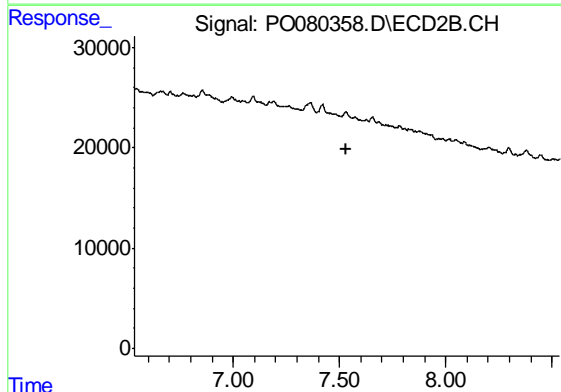
R.T.: 0.000 min  
 Exp R.T. : 6.858 min  
 Response: 0  
 Conc: N.D.



#30 AR-1254-5

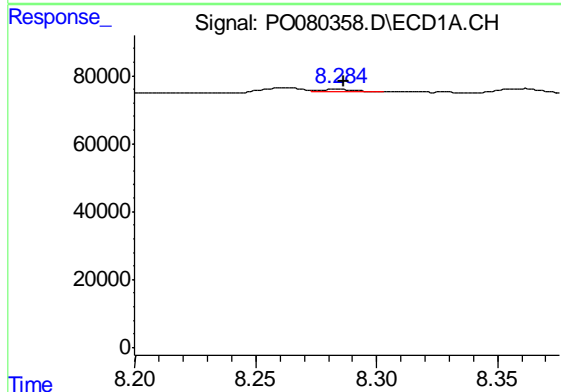
R.T.: 8.578 min  
 Delta R.T.: -0.003 min  
 Response: 16383  
 Conc: 5.30 ng/ml

Instrument :  
 ECD\_O  
 ClientSampleId :  
 20210580-COM-3



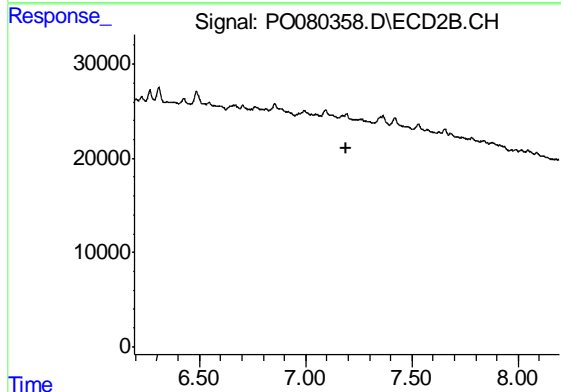
#30 AR-1254-5

R.T.: 0.000 min  
 Exp R.T. : 7.535 min  
 Response: 0  
 Conc: N.D.



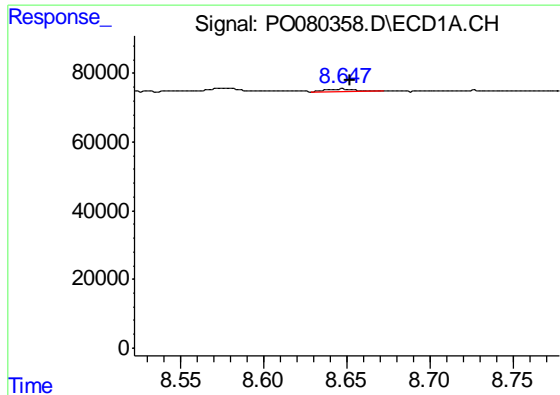
#32 AR-1260-2

R.T.: 8.284 min  
 Delta R.T.: -0.002 min  
 Response: 9132  
 Conc: 2.75 ng/ml



#32 AR-1260-2

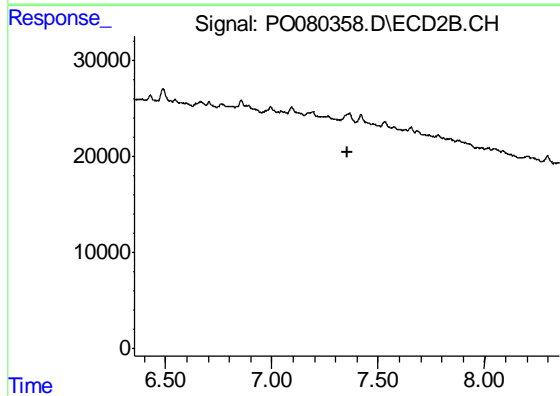
R.T.: 0.000 min  
 Exp R.T. : 7.194 min  
 Response: 0  
 Conc: N.D.



#33 AR-1260-3

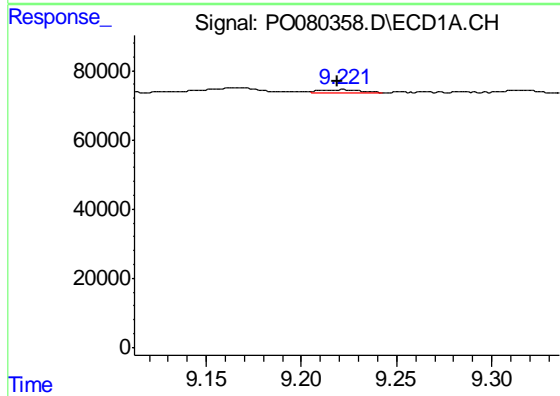
R.T.: 8.648 min  
 Delta R.T.: -0.004 min  
 Response: 10843  
 Conc: 4.33 ng/ml

Instrument :  
 ECD\_O  
 ClientSampleId :  
 20210580-COM-3



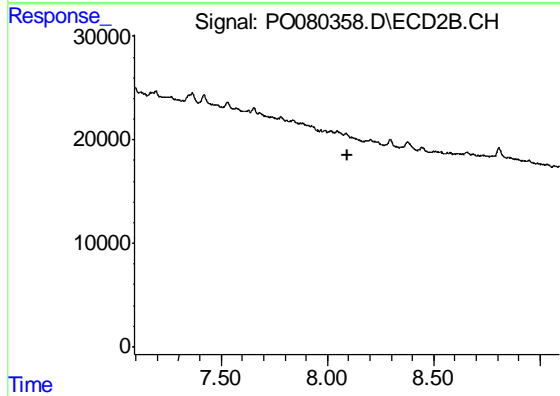
#33 AR-1260-3

R.T.: 0.000 min  
 Exp R.T. : 7.353 min  
 Response: 0  
 Conc: N.D.



#35 AR-1260-5

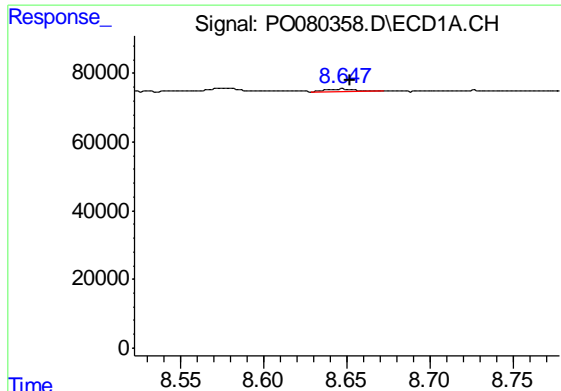
R.T.: 9.222 min  
 Delta R.T.: 0.003 min  
 Response: 10307  
 Conc: 1.81 ng/ml



#35 AR-1260-5

R.T.: 0.000 min  
 Exp R.T. : 8.092 min  
 Response: 0  
 Conc: N.D.

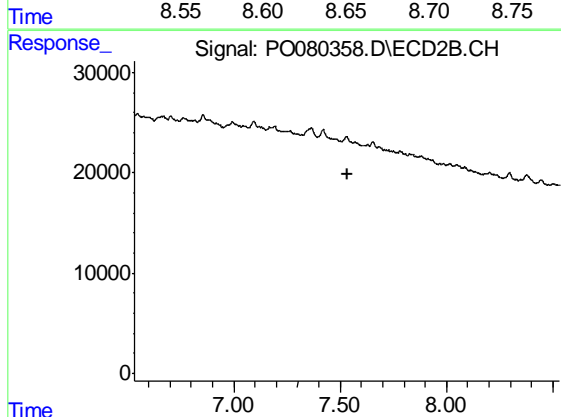




#36 AR-1262-1

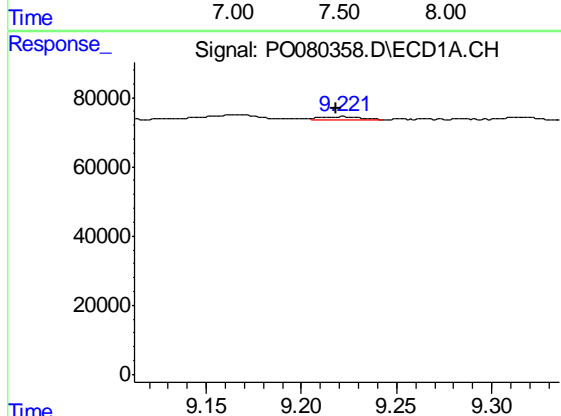
R.T.: 8.648 min  
 Delta R.T.: -0.005 min  
 Response: 10843  
 Conc: 2.84 ng/ml

Instrument :  
 ECD\_O  
 ClientSampleId :  
 20210580-COM-3



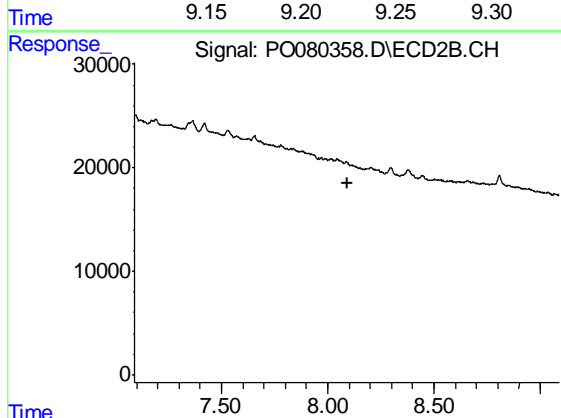
#36 AR-1262-1

R.T.: 0.000 min  
 Exp R.T. : 7.532 min  
 Response: 0  
 Conc: N.D.



#37 AR-1262-2

R.T.: 9.222 min  
 Delta R.T.: 0.004 min  
 Response: 10307  
 Conc: 1.52 ng/ml



#37 AR-1262-2

R.T.: 0.000 min  
 Exp R.T. : 8.090 min  
 Response: 0  
 Conc: N.D.