

Data Path : Z:\pestpcbsrv\HPCHEM1\ECD_0\Data\P0081122\
 Data File : P0088887.D
 Signal(s) : Signal #1: ECD1A.ch Signal #2: ECD2B.ch
 Acq On : 11 Aug 2022 11:47
 Operator : YP/AJ
 Sample : N4106-22 10X
 Misc :
 ALS Vial : 11 Sample Multiplier: 1

Instrument :
 ECD_0
ClientSampleId :
 BC274412-LOZ-END-1-1

Manual Integrations
APPROVED

Reviewed By :Yogesh Patel 08/12/2022
 Supervised By :Ankita Jodhani 08/12/2022

Integration File signal 1: autoint1.e
 Integration File signal 2: autoint2.e
 Quant Time: Aug 11 12:47:05 2022
 Quant Method : Z:\pestpcbsrv\HPCHEM1\ECD_0\methods\P0080422.M
 Quant Title : GC EXTRACTABLES
 QLast Update : Fri Aug 05 23:24:09 2022
 Response via : Initial Calibration
 Integrator: ChemStation

Volume Inj. : 2 µl
 Signal #1 Phase : ZB-MR1 Signal #2 Phase: ZB-MR2
 Signal #1 Info : 30Mx0.32mmx 0.50µ Signal #2 Info : 30M x 0.32mm x 0.25µm

Compound	RT#1	RT#2	Resp#1	Resp#2	ng/ml	ng/ml

System Monitoring Compounds						
1) SA Tetrachlo...	4.435	3.592	3812210	1537100	1.413	1.420m
2) SA Decachlor...	10.277	8.585	3281351	1742901	1.700	1.438m

Target Compounds

 (f)=RT Delta > 1/2 Window (#)=Amounts differ by > 25% (m)=manual int.

Data Path : Z:\pestpcbsrv\HPCHEM1\ECD_0\Data\PO081122\
 Data File : PO088887.D
 Signal(s) : Signal #1: ECD1A.ch Signal #2: ECD2B.ch
 Acq On : 11 Aug 2022 11:47
 Operator : YP/AJ
 Sample : N4106-22 10X
 Misc :
 ALS Vial : 11 Sample Multiplier: 1

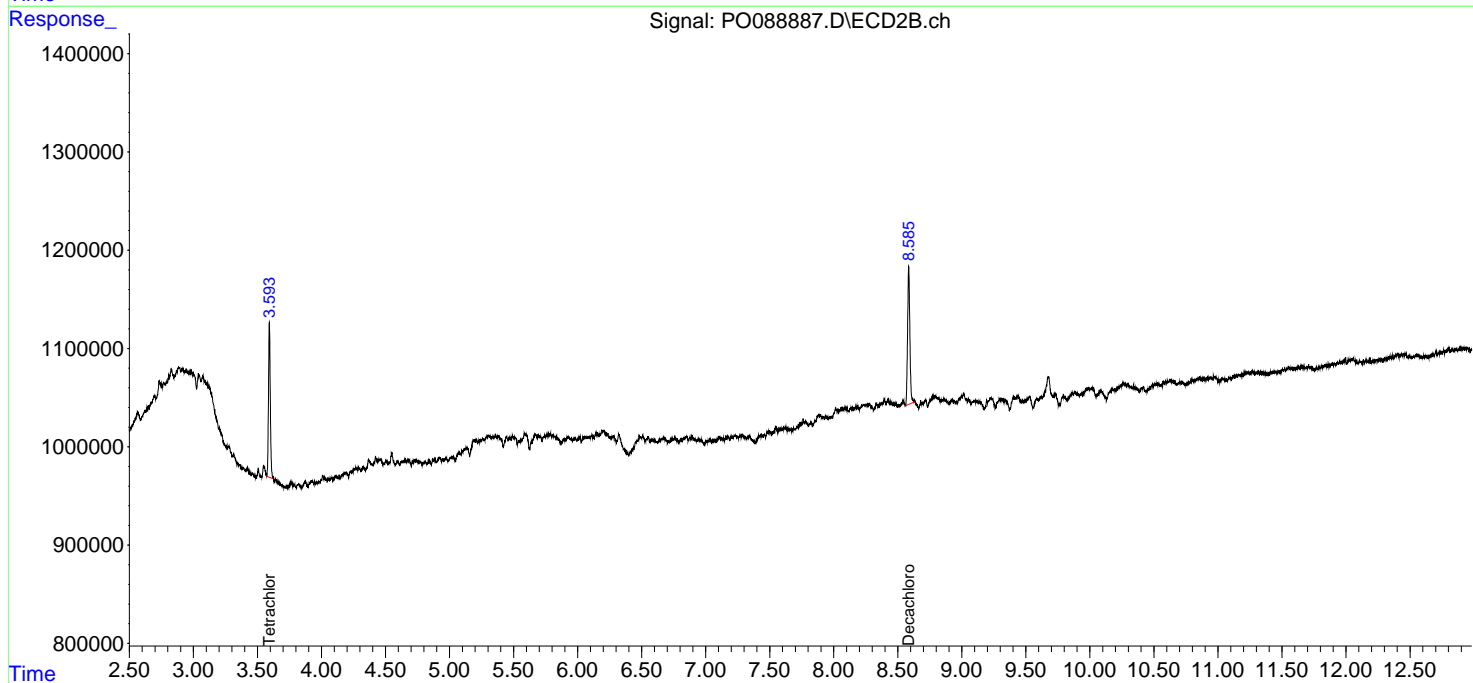
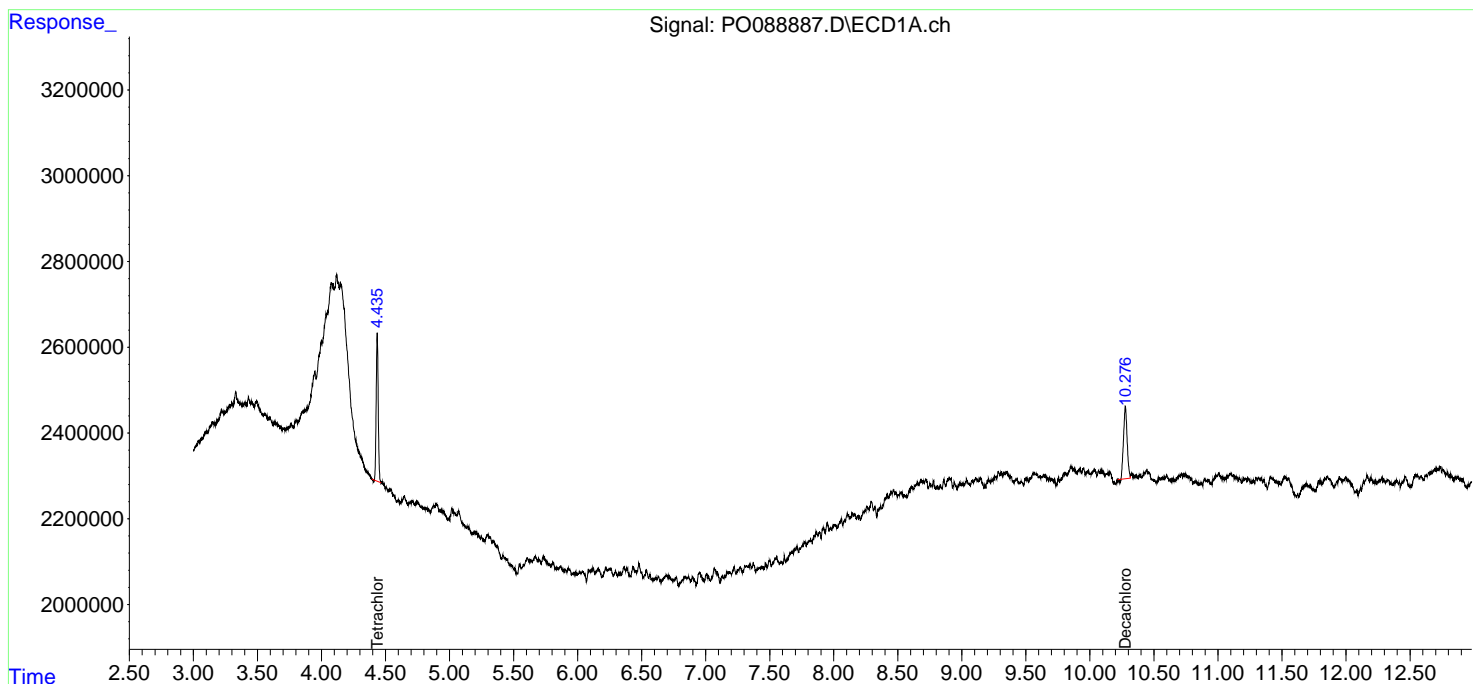
Instrument :
 ECD_0
 ClientSampleId :
 BC274412-LOZ-END-1-1

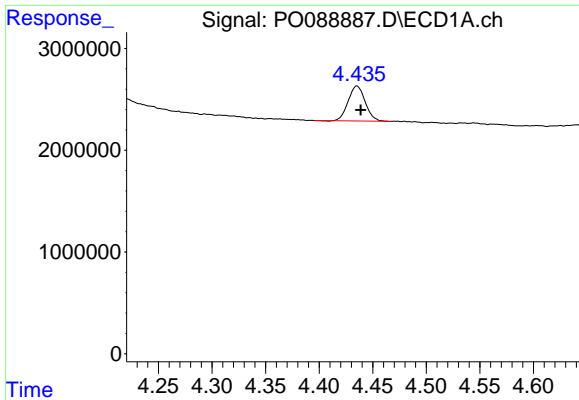
Manual Integrations
APPROVED

Reviewed By :Yogesh Patel 08/12/2022
 Supervised By :Ankita Jodhani 08/12/2022

Integration File signal 1: autoint1.e
 Integration File signal 2: autoint2.e
 Quant Time: Aug 11 12:47:05 2022
 Quant Method : Z:\pestpcbsrv\HPCHEM1\ECD_0\methods\PO080422.M
 Quant Title : GC EXTRACTABLES
 QLast Update : Fri Aug 05 23:24:09 2022
 Response via : Initial Calibration
 Integrator: ChemStation

Volume Inj. : 2 µl
 Signal #1 Phase : ZB-MR1 Signal #2 Phase: ZB-MR2
 Signal #1 Info : 30Mx0.32mmx 0.50µ Signal #2 Info : 30M x 0.32mm x 0.25µm

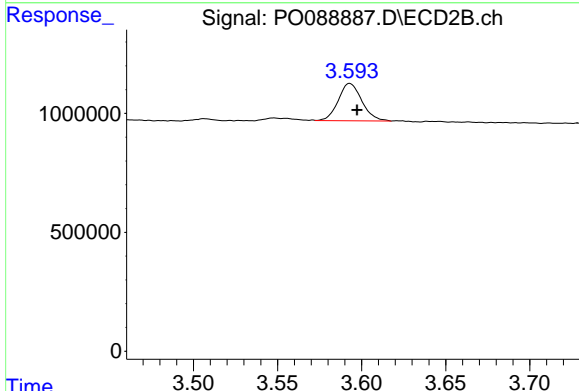




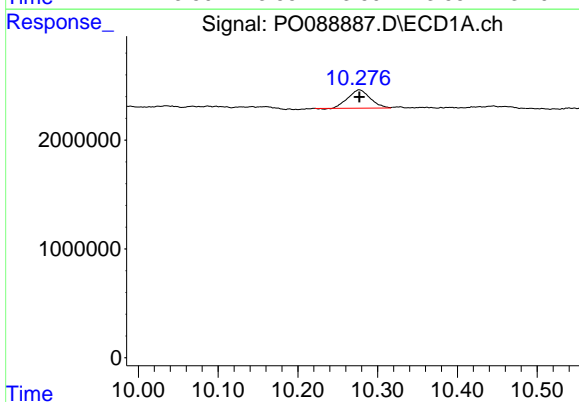
#1 Tetrachloro-m-xylene
 R.T.: 4.435 min
 Delta R.T.: -0.004 min
 Response: 3812210
 Conc: 1.41 ng/ml

Instrument : ECD_O
 ClientSampleId : BC274412-LOZ-END-1-1

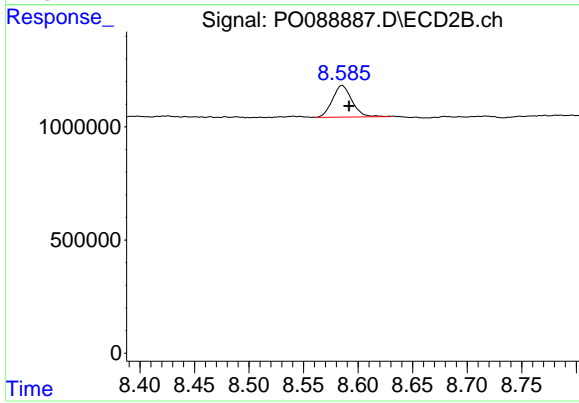
Manual Integrations
APPROVED
 Reviewed By :Yogesh Patel 08/12/2022
 Supervised By :Ankita Jodhani 08/12/2022



#1 Tetrachloro-m-xylene
 R.T.: 3.592 min
 Delta R.T.: -0.005 min
 Response: 1537100
 Conc: 1.42 ng/ml m



#2 Decachlorobiphenyl
 R.T.: 10.277 min
 Delta R.T.: 0.000 min
 Response: 3281351
 Conc: 1.70 ng/ml



#2 Decachlorobiphenyl
 R.T.: 8.585 min
 Delta R.T.: -0.007 min
 Response: 1742901
 Conc: 1.44 ng/ml m