

Data Path : Z:\pestpcbsrv\HPCHEM1\ECD_0\Data\P0081123\
 Data File : P0096990.D
 Signal(s) : Signal #1: ECD1A.ch Signal #2: ECD2B.ch
 Acq On : 11 Aug 2023 21:48
 Operator : YP/AJ
 Sample : AR1254CCC500
 Misc :
 ALS Vial : 6 Sample Multiplier: 1

Instrument :
 ECD_0
 ClientSampleId :
 AR1254CCC500

Integration File signal 1: autoint1.e
 Integration File signal 2: autoint2.e
 Quant Time: Aug 11 23:02:52 2023
 Quant Method : Z:\pestpcbsrv\HPCHEM1\ECD_0\methods\P0080723.M
 Quant Title : GC EXTRACTABLES
 QLast Update : Tue Aug 08 04:34:41 2023
 Response via : Initial Calibration
 Integrator: ChemStation

Volume Inj. : 2 µl
 Signal #1 Phase : ZB-MR1 Signal #2 Phase: ZB-MR2
 Signal #1 Info : 30Mx0.32mmx 0.50µ Signal #2 Info : 30M x 0.32mm x 0.25µm

Compound	RT#1	RT#2	Resp#1	Resp#2	ng/ml	ng/ml

System Monitoring Compounds						
1) SA Tetrachlo...	4.411	3.617	170.7E6	67828725	51.555	51.238
2) SA Decachlor...	10.351	8.635	115.2E6	56597036	52.628	48.920
Target Compounds						
26) L6 AR-1254-1	6.470	5.506	53506972	35719726	489.584	484.032
27) L6 AR-1254-2	6.695	5.654	79115801	31754048	490.709	481.996
28) L6 AR-1254-3	7.072	6.059	78163330	49101662	498.819	485.854
29) L6 AR-1254-4	7.364	6.289	52949695	29464395	525.200	509.106
30) L6 AR-1254-5	7.796	6.707	58257928	43013548	519.166	489.262

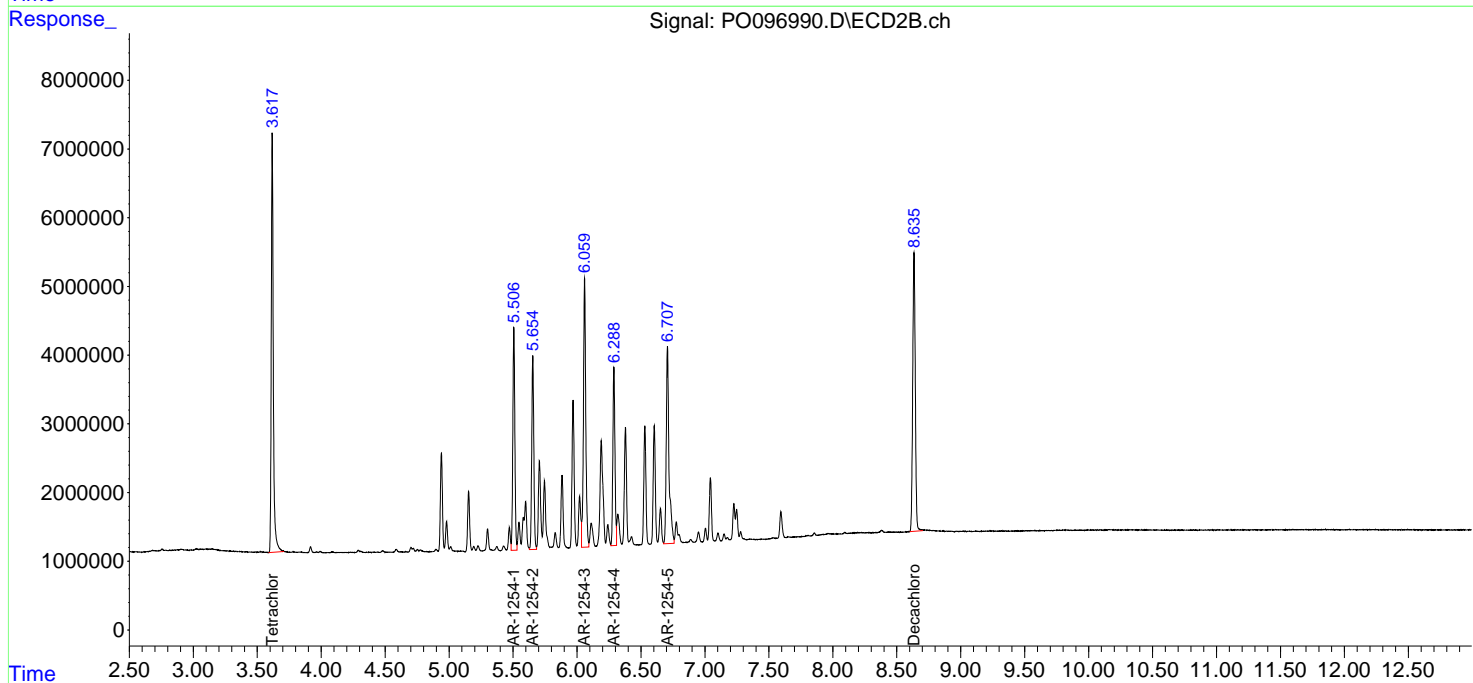
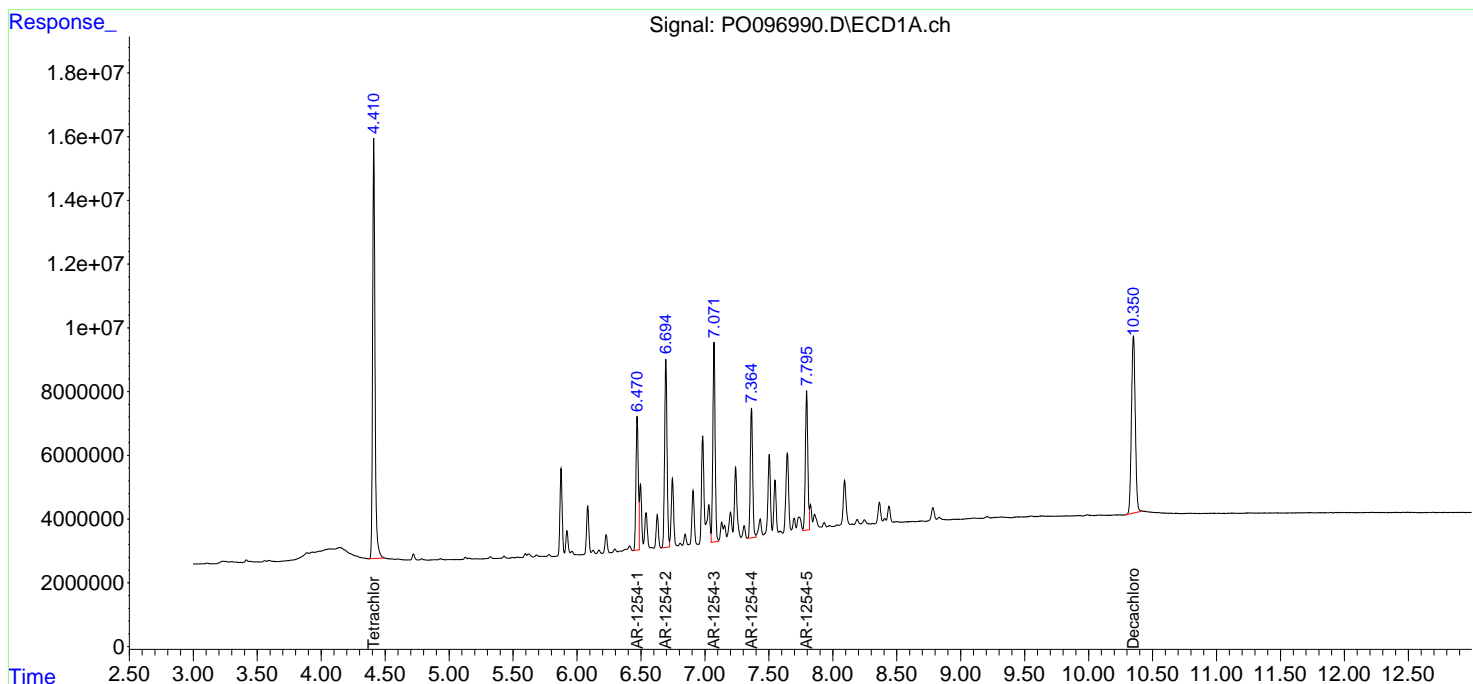
(f)=RT Delta > 1/2 Window (#)=Amounts differ by > 25% (m)=manual int.

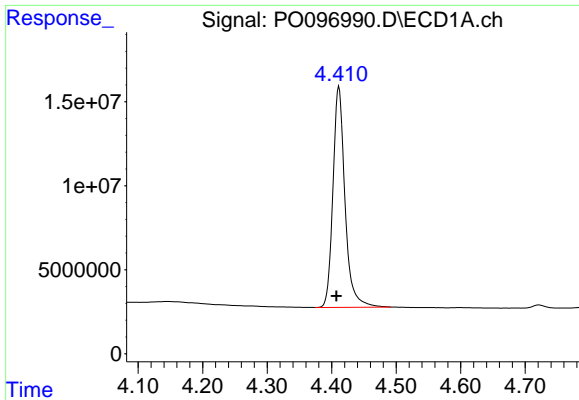
Data Path : Z:\pestpcbsrv\HPCHEM1\ECD_O\Data\P0081123\
 Data File : P0096990.D
 Signal(s) : Signal #1: ECD1A.ch Signal #2: ECD2B.ch
 Acq On : 11 Aug 2023 21:48
 Operator : YP/AJ
 Sample : AR1254CCC500
 Misc :
 ALS Vial : 6 Sample Multiplier: 1

Instrument :
 ECD_O
 ClientSampleId :
 AR1254CCC500

Integration File signal 1: autoint1.e
 Integration File signal 2: autoint2.e
 Quant Time: Aug 11 23:02:52 2023
 Quant Method : Z:\pestpcbsrv\HPCHEM1\ECD_O\methods\P0080723.M
 Quant Title : GC EXTRACTABLES
 QLast Update : Tue Aug 08 04:34:41 2023
 Response via : Initial Calibration
 Integrator: ChemStation

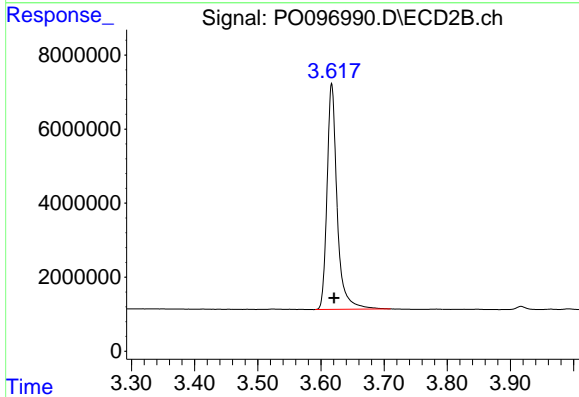
Volume Inj. : 2 µl
 Signal #1 Phase : ZB-MR1 Signal #2 Phase: ZB-MR2
 Signal #1 Info : 30Mx0.32mmx 0.50µm Signal #2 Info : 30M x 0.32mm x 0.25µm



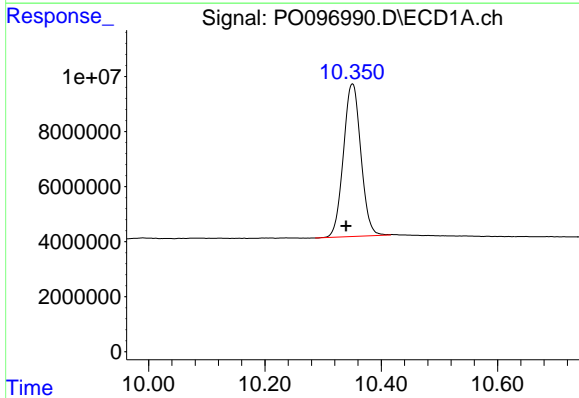


#1 Tetrachloro-m-xylene
 R.T.: 4.411 min
 Delta R.T.: 0.004 min
 Response: 170657151
 Conc: 51.56 ng/ml

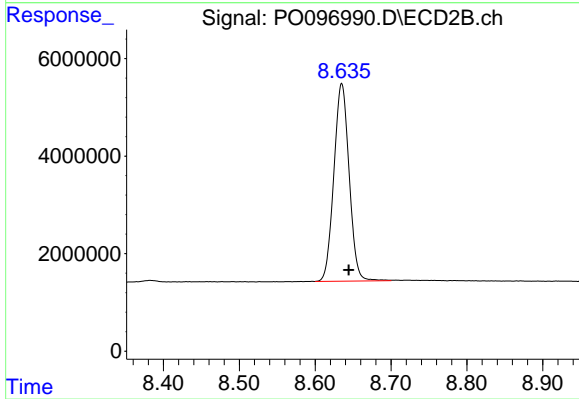
Instrument :
 ECD_O
 ClientSampleId :
 AR1254CCC500



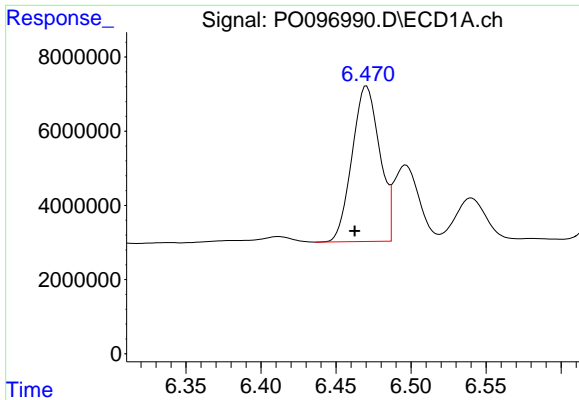
#1 Tetrachloro-m-xylene
 R.T.: 3.617 min
 Delta R.T.: -0.004 min
 Response: 67828725
 Conc: 51.24 ng/ml



#2 Decachlorobiphenyl
 R.T.: 10.351 min
 Delta R.T.: 0.011 min
 Response: 115160449
 Conc: 52.63 ng/ml



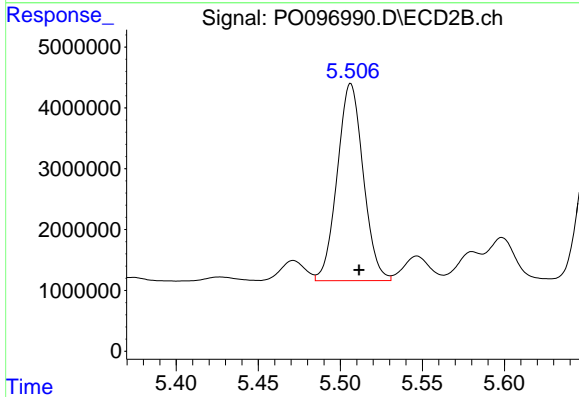
#2 Decachlorobiphenyl
 R.T.: 8.635 min
 Delta R.T.: -0.009 min
 Response: 56597036
 Conc: 48.92 ng/ml



#26 AR-1254-1

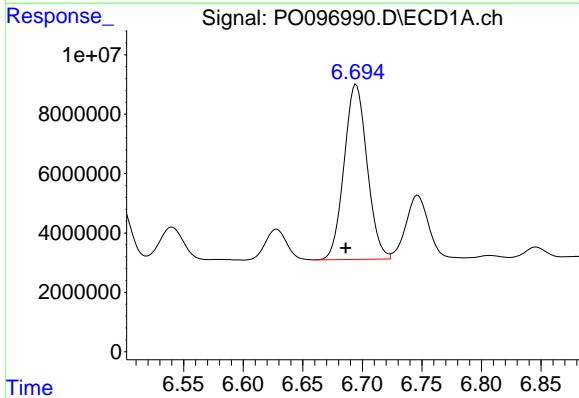
R.T.: 6.470 min
 Delta R.T.: 0.008 min
 Response: 53506972
 Conc: 489.58 ng/ml

Instrument :
 ECD_O
 ClientSampleId :
 AR1254CCC500



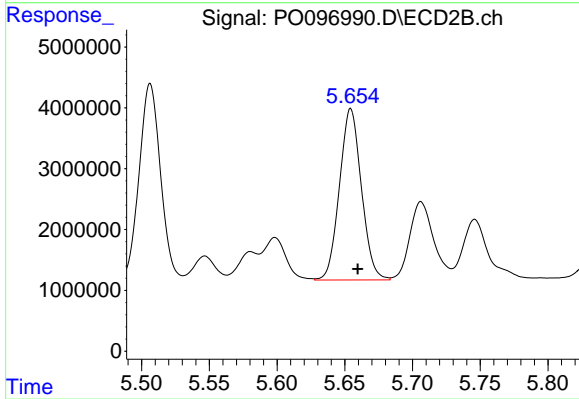
#26 AR-1254-1

R.T.: 5.506 min
 Delta R.T.: -0.005 min
 Response: 35719726
 Conc: 484.03 ng/ml



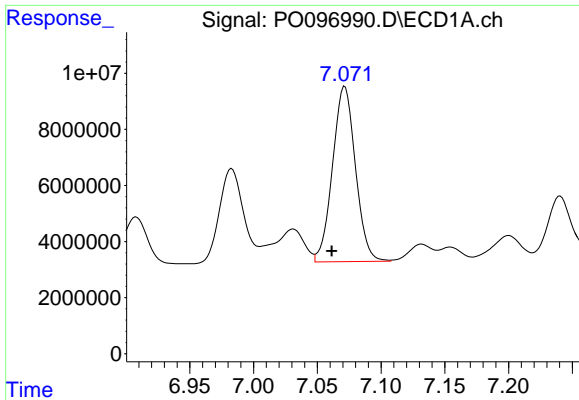
#27 AR-1254-2

R.T.: 6.695 min
 Delta R.T.: 0.009 min
 Response: 79115801
 Conc: 490.71 ng/ml



#27 AR-1254-2

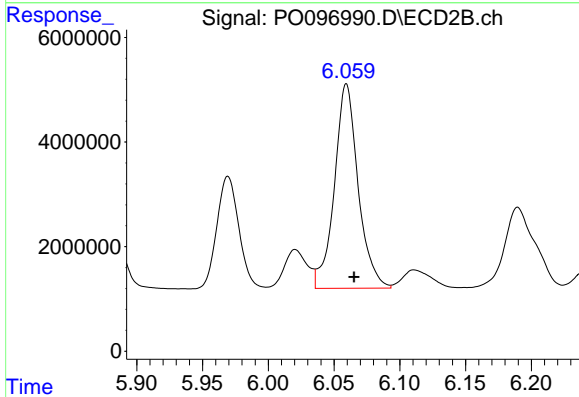
R.T.: 5.654 min
 Delta R.T.: -0.005 min
 Response: 31754048
 Conc: 482.00 ng/ml



#28 AR-1254-3

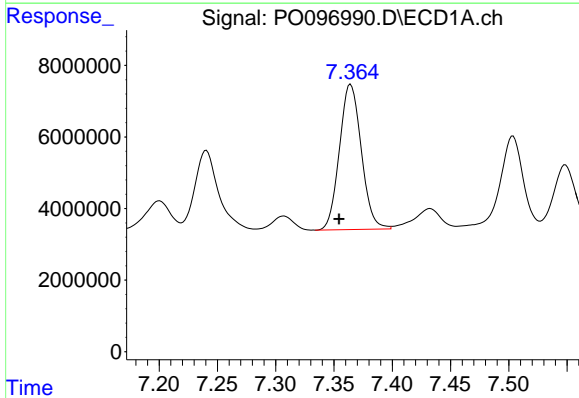
R.T.: 7.072 min
 Delta R.T.: 0.010 min
 Response: 78163330
 Conc: 498.82 ng/ml

Instrument :
 ECD_O
 ClientSampleId :
 AR1254CCC500



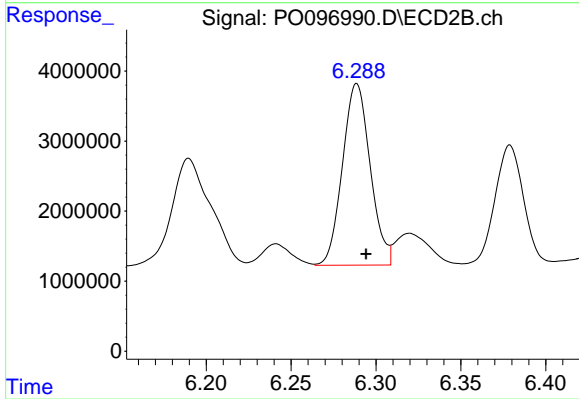
#28 AR-1254-3

R.T.: 6.059 min
 Delta R.T.: -0.006 min
 Response: 49101662
 Conc: 485.85 ng/ml



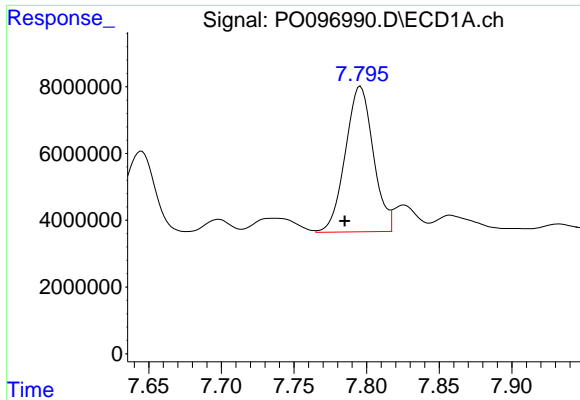
#29 AR-1254-4

R.T.: 7.364 min
 Delta R.T.: 0.010 min
 Response: 52949695
 Conc: 525.20 ng/ml



#29 AR-1254-4

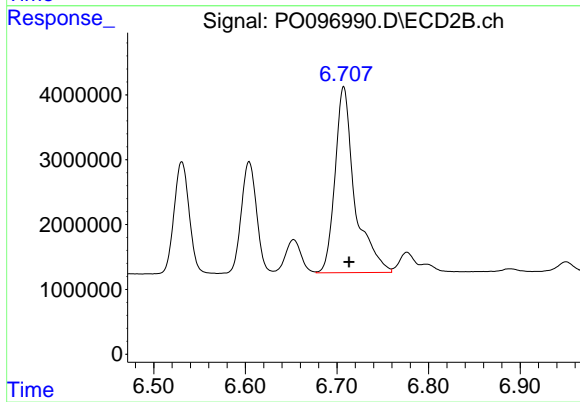
R.T.: 6.289 min
 Delta R.T.: -0.006 min
 Response: 29464395
 Conc: 509.11 ng/ml



#30 AR-1254-5

R.T.: 7.796 min
Delta R.T.: 0.011 min
Response: 58257928
Conc: 519.17 ng/ml

Instrument :
ECD_O
ClientSampleId :
AR1254CCC500



#30 AR-1254-5

R.T.: 6.707 min
Delta R.T.: -0.006 min
Response: 43013548
Conc: 489.26 ng/ml