

Data Path : Z:\pestpcbsrv\HPCHEM1\ECD_0\Data\P0081125\
 Data File : P0112830.D
 Signal(s) : Signal #1: ECD1A.ch Signal #2: ECD2B.ch
 Acq On : 11 Aug 2025 10:05
 Operator : YP/AJ
 Sample : AR1242CCC500
 Misc :
 ALS Vial : 4 Sample Multiplier: 1

Instrument :
 ECD_0
 ClientSampleId :
 AR1242CCC500

Integration File signal 1: autoint1.e
 Integration File signal 2: autoint2.e
 Quant Time: Aug 11 11:20:29 2025
 Quant Method : Z:\pestpcbsrv\HPCHEM1\ECD_0\methods\P0072325.M
 Quant Title : GC EXTRACTABLES
 QLast Update : Thu Jul 24 04:54:06 2025
 Response via : Initial Calibration
 Integrator: ChemStation

Volume Inj. : 2 µl
 Signal #1 Phase : ZB-MR1 Signal #2 Phase: ZB-MR2
 Signal #1 Info : 30Mx0.32mmx 0.50µ Signal #2 Info : 30M x 0.32mm x 0.25µm

Compound	RT#1	RT#2	Resp#1	Resp#2	ng/ml	ng/ml

System Monitoring Compounds						
1) SA Tetrachlo...	3.670	3.658	473.3E6	273.0E6	58.200	54.941
2) SA Decachlor...	8.693	8.633	358.7E6	93516584	49.063	52.921
Target Compounds						
16) L4 AR-1242-1	4.757	4.732	132.0E6	78334841	533.236	494.557
17) L4 AR-1242-2	4.775	4.750	199.2E6	116.2E6	538.719	497.502
18) L4 AR-1242-3	4.832	4.925	124.8E6	58821132	527.365	485.367
19) L4 AR-1242-4	4.952	5.009	100.7E6	58781409	518.567	478.912
20) L4 AR-1242-5	5.602	5.529	110.9E6	80093425	518.309	497.563

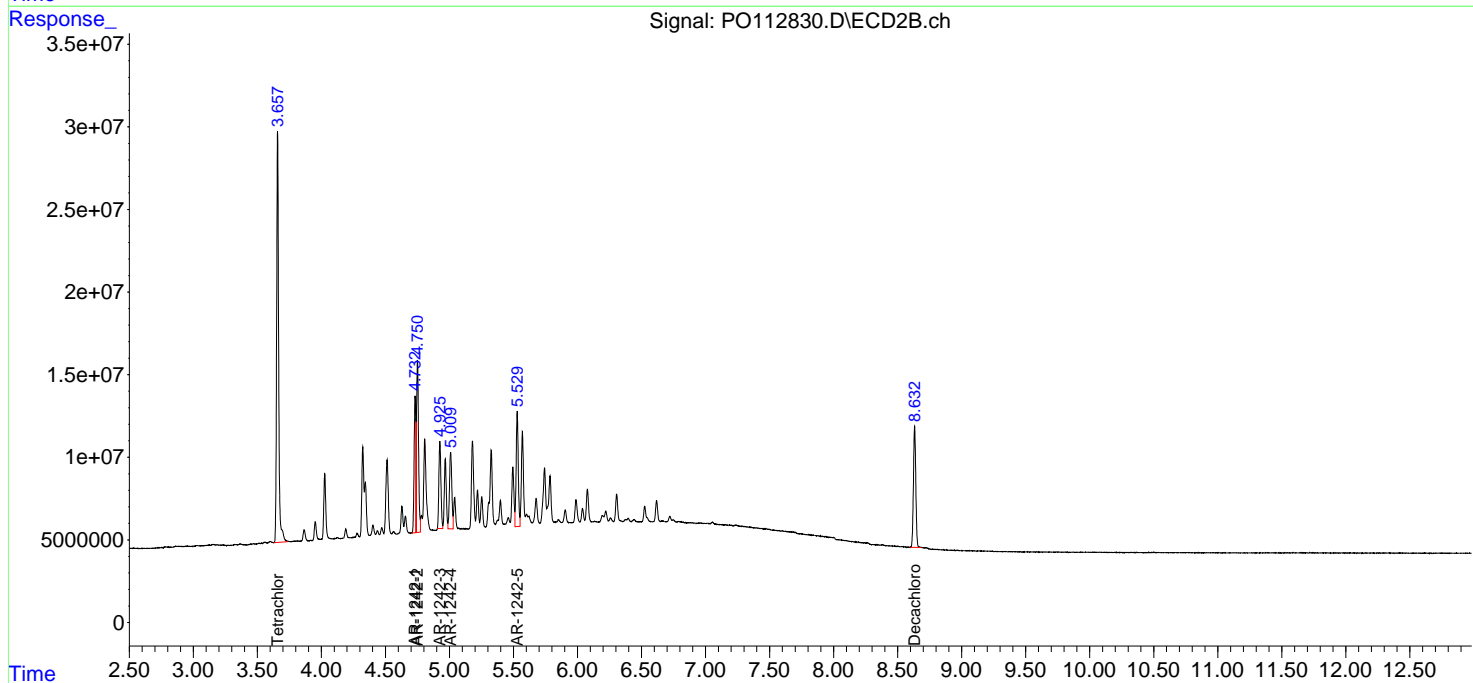
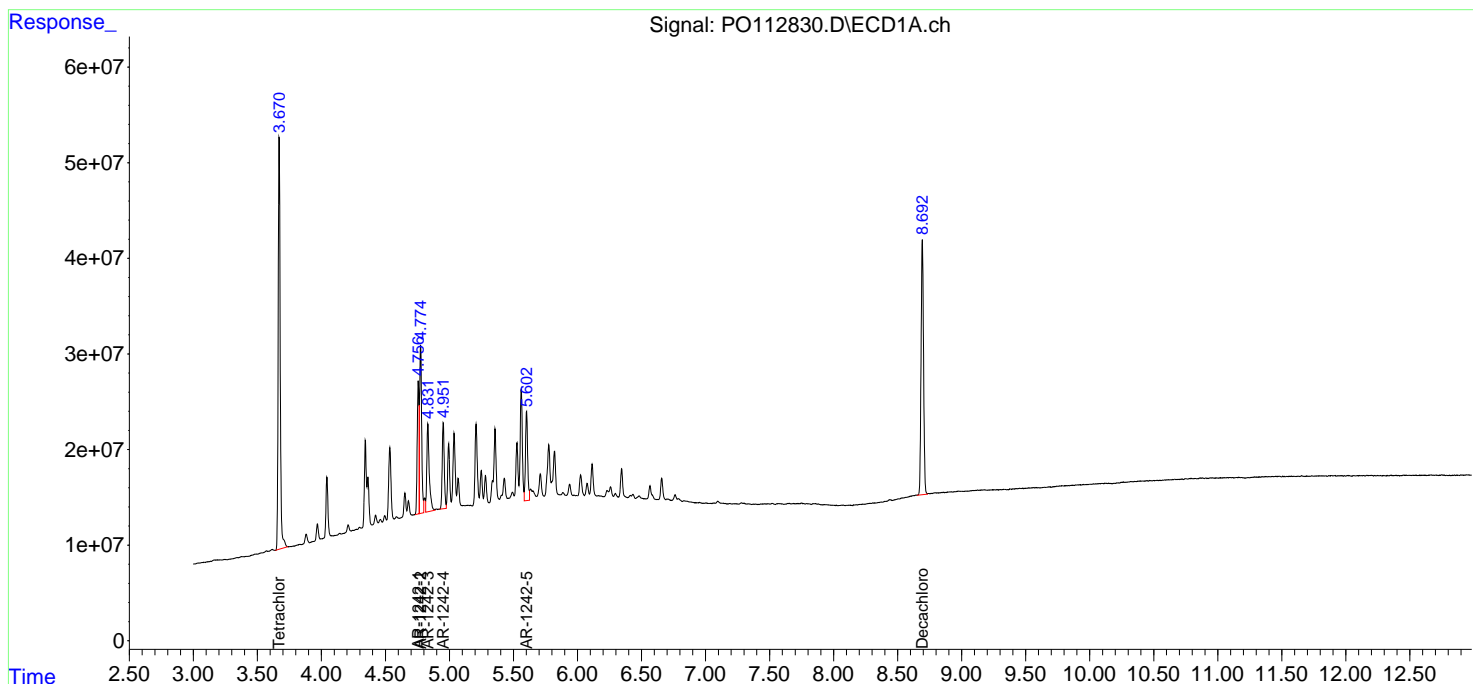
(f)=RT Delta > 1/2 Window (#)=Amounts differ by > 25% (m)=manual int.

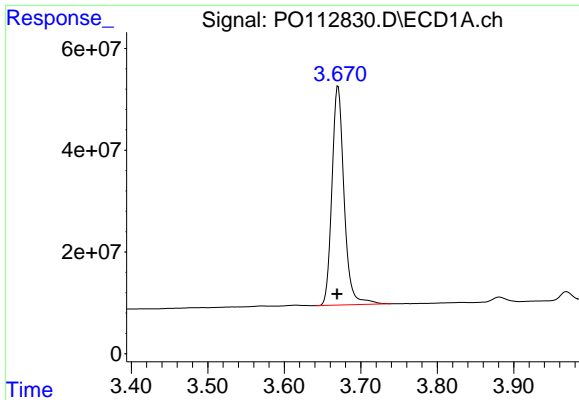
Data Path : Z:\pestpcbsrv\HPCHEM1\ECD_O\Data\P0081125\
 Data File : P0112830.D
 Signal(s) : Signal #1: ECD1A.ch Signal #2: ECD2B.ch
 Acq On : 11 Aug 2025 10:05
 Operator : YP/AJ
 Sample : AR1242CCC500
 Misc :
 ALS Vial : 4 Sample Multiplier: 1

Instrument :
 ECD_O
 ClientSampleId :
 AR1242CCC500

Integration File signal 1: autoint1.e
 Integration File signal 2: autoint2.e
 Quant Time: Aug 11 11:20:29 2025
 Quant Method : Z:\pestpcbsrv\HPCHEM1\ECD_O\methods\P0072325.M
 Quant Title : GC EXTRACTABLES
 QLast Update : Thu Jul 24 04:54:06 2025
 Response via : Initial Calibration
 Integrator: ChemStation

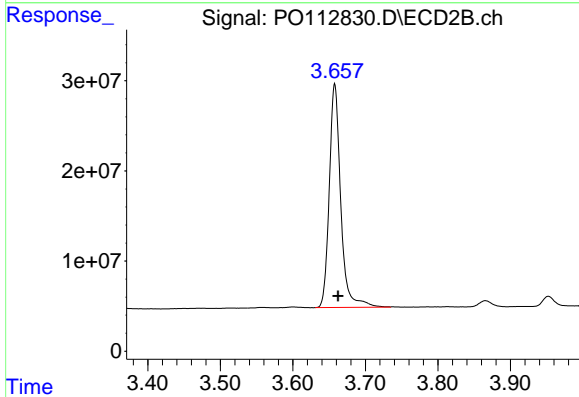
Volume Inj. : 2 µl
 Signal #1 Phase : ZB-MR1 Signal #2 Phase: ZB-MR2
 Signal #1 Info : 30Mx0.32mmx 0.50µ Signal #2 Info : 30M x 0.32mm x 0.25µm



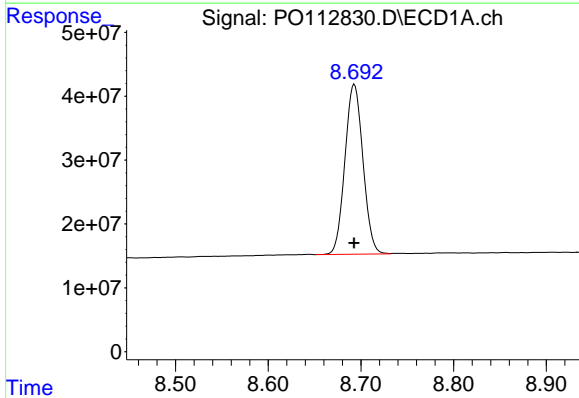


#1 Tetrachloro-m-xylene
 R.T.: 3.670 min
 Delta R.T.: 0.001 min
 Response: 473259544
 Conc: 58.20 ng/ml

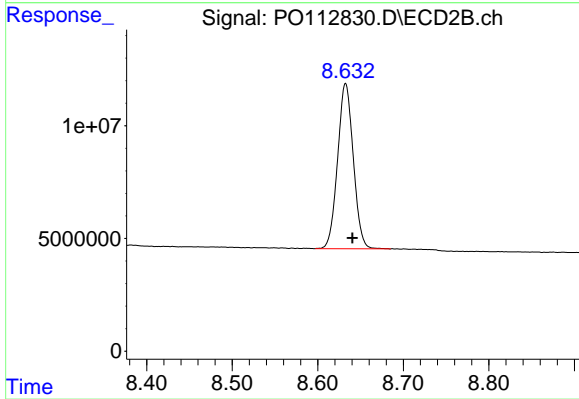
Instrument :
 ECD_O
 ClientSampleId :
 AR1242CCC500



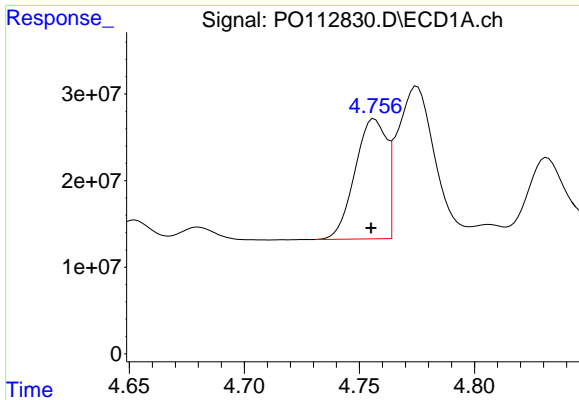
#1 Tetrachloro-m-xylene
 R.T.: 3.658 min
 Delta R.T.: -0.005 min
 Response: 273013095
 Conc: 54.94 ng/ml



#2 Decachlorobiphenyl
 R.T.: 8.693 min
 Delta R.T.: 0.000 min
 Response: 358737993
 Conc: 49.06 ng/ml



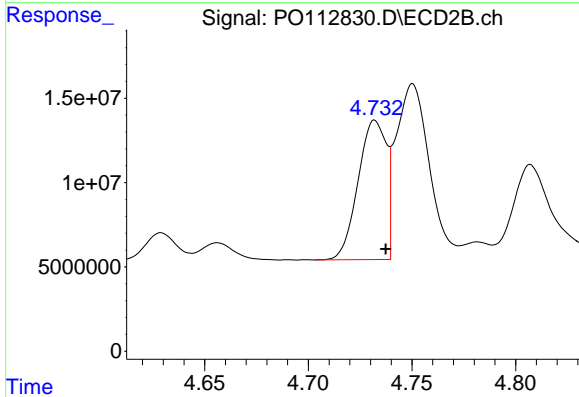
#2 Decachlorobiphenyl
 R.T.: 8.633 min
 Delta R.T.: -0.008 min
 Response: 93516584
 Conc: 52.92 ng/ml



#16 AR-1242-1

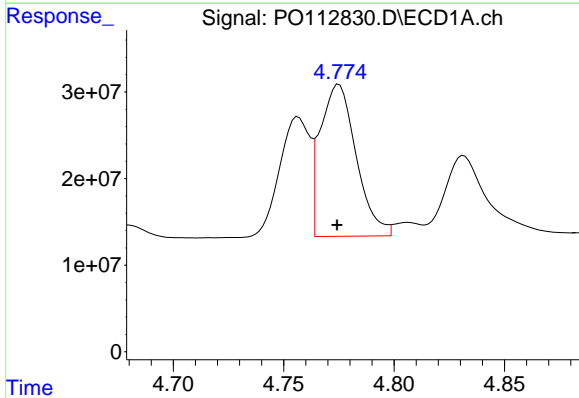
R.T.: 4.757 min
 Delta R.T.: 0.002 min
 Response: 132024863
 Conc: 533.24 ng/ml

Instrument :
 ECD_O
 ClientSampleId :
 AR1242CCC500



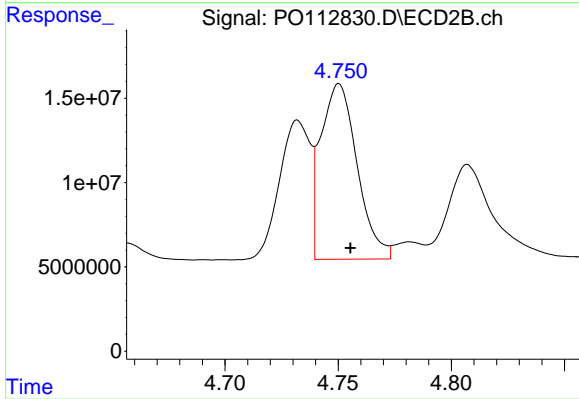
#16 AR-1242-1

R.T.: 4.732 min
 Delta R.T.: -0.005 min
 Response: 78334841
 Conc: 494.56 ng/ml



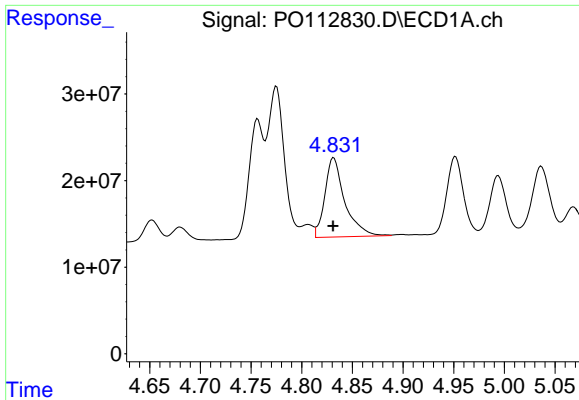
#17 AR-1242-2

R.T.: 4.775 min
 Delta R.T.: 0.000 min
 Response: 199214681
 Conc: 538.72 ng/ml



#17 AR-1242-2

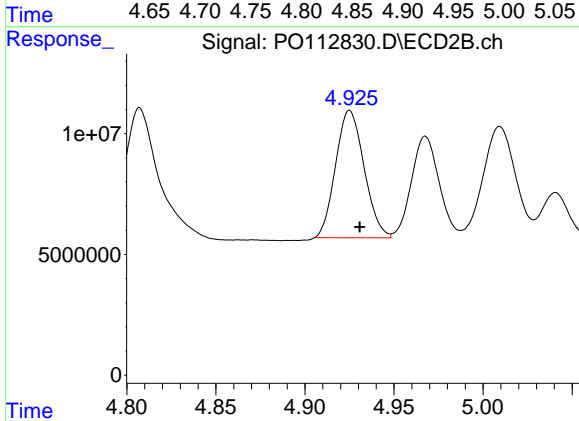
R.T.: 4.750 min
 Delta R.T.: -0.005 min
 Response: 116249570
 Conc: 497.50 ng/ml



#18 AR-1242-3

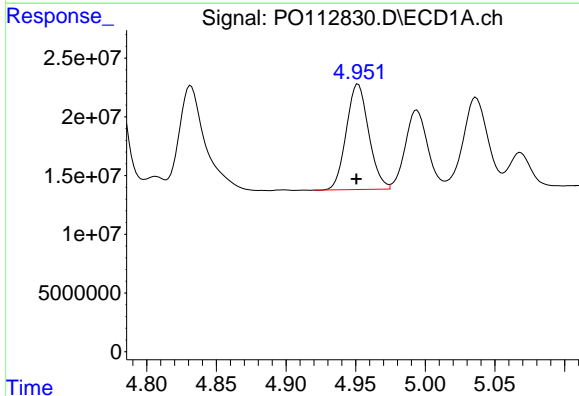
R.T.: 4.832 min
 Delta R.T.: 0.000 min
 Response: 124805151
 Conc: 527.37 ng/ml

Instrument :
 ECD_O
 ClientSampleId :
 AR1242CCC500



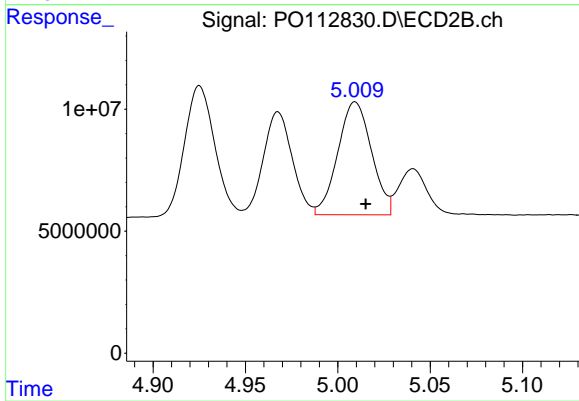
#18 AR-1242-3

R.T.: 4.925 min
 Delta R.T.: -0.006 min
 Response: 58821132
 Conc: 485.37 ng/ml



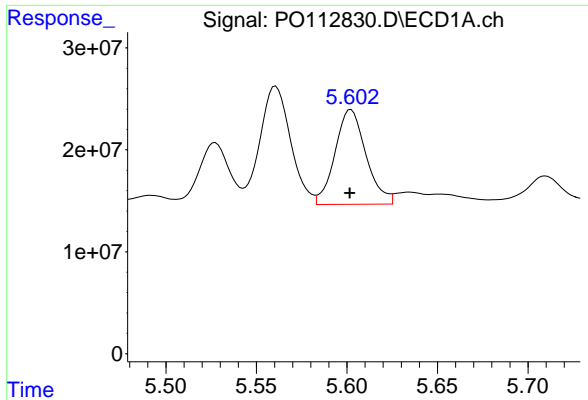
#19 AR-1242-4

R.T.: 4.952 min
 Delta R.T.: 0.001 min
 Response: 100746495
 Conc: 518.57 ng/ml



#19 AR-1242-4

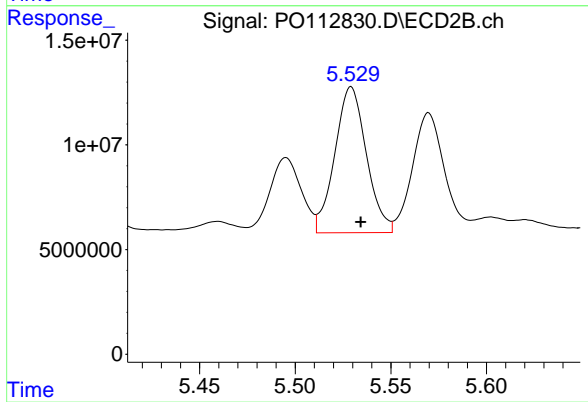
R.T.: 5.009 min
 Delta R.T.: -0.006 min
 Response: 58781409
 Conc: 478.91 ng/ml



#20 AR-1242-5

R.T.: 5.602 min
Delta R.T.: 0.000 min
Response: 110874266
Conc: 518.31 ng/ml

Instrument :
ECD_O
ClientSampleId :
AR1242CCC500



#20 AR-1242-5

R.T.: 5.529 min
Delta R.T.: -0.005 min
Response: 80093425
Conc: 497.56 ng/ml