

Data Path : Z:\pestpcbsrv\HPCHEM1\ECD_0\Data\P0081125\
 Data File : PO112831.D
 Signal(s) : Signal #1: ECD1A.ch Signal #2: ECD2B.ch
 Acq On : 11 Aug 2025 10:23
 Operator : YP/AJ
 Sample : AR1248CCC500
 Misc :
 ALS Vial : 5 Sample Multiplier: 1

Instrument :
 ECD_0
 ClientSampleId :
 AR1248CCC500

Integration File signal 1: autoint1.e
 Integration File signal 2: autoint2.e
 Quant Time: Aug 11 11:21:09 2025
 Quant Method : Z:\pestpcbsrv\HPCHEM1\ECD_0\methods\P0072325.M
 Quant Title : GC EXTRACTABLES
 QLast Update : Thu Jul 24 04:54:06 2025
 Response via : Initial Calibration
 Integrator: ChemStation

Volume Inj. : 2 µl
 Signal #1 Phase : ZB-MR1 Signal #2 Phase: ZB-MR2
 Signal #1 Info : 30Mx0.32mmx 0.50µ Signal #2 Info : 30M x 0.32mm x 0.25µm

| Compound | RT#1 | RT#2 | Resp#1 | Resp#2 | ng/ml | ng/ml |
|-----------------------------|-------|-------|----------|----------|---------|---------|
| ----- | | | | | | |
| System Monitoring Compounds | | | | | | |
| 1) SA Tetrachlo... | 3.667 | 3.658 | 479.7E6 | 276.0E6 | 58.996 | 55.540 |
| 2) SA Decachlor... | 8.688 | 8.631 | 360.4E6 | 93062000 | 49.289 | 52.663 |
| Target Compounds | | | | | | |
| 21) L5 AR-1248-1 | 4.752 | 4.731 | 99641707 | 60646518 | 532.249 | 499.110 |
| 22) L5 AR-1248-2 | 4.989 | 4.968 | 137.8E6 | 84314881 | 540.107 | 498.080 |
| 23) L5 AR-1248-3 | 5.203 | 5.009 | 175.2E6 | 88885683 | 509.843 | 500.350 |
| 24) L5 AR-1248-4 | 5.556 | 5.179 | 262.5E6 | 104.7E6 | 516.722 | 502.471 |
| 25) L5 AR-1248-5 | 5.597 | 5.570 | 178.0E6 | 106.0E6 | 509.084 | 493.725 |
| ----- | | | | | | |

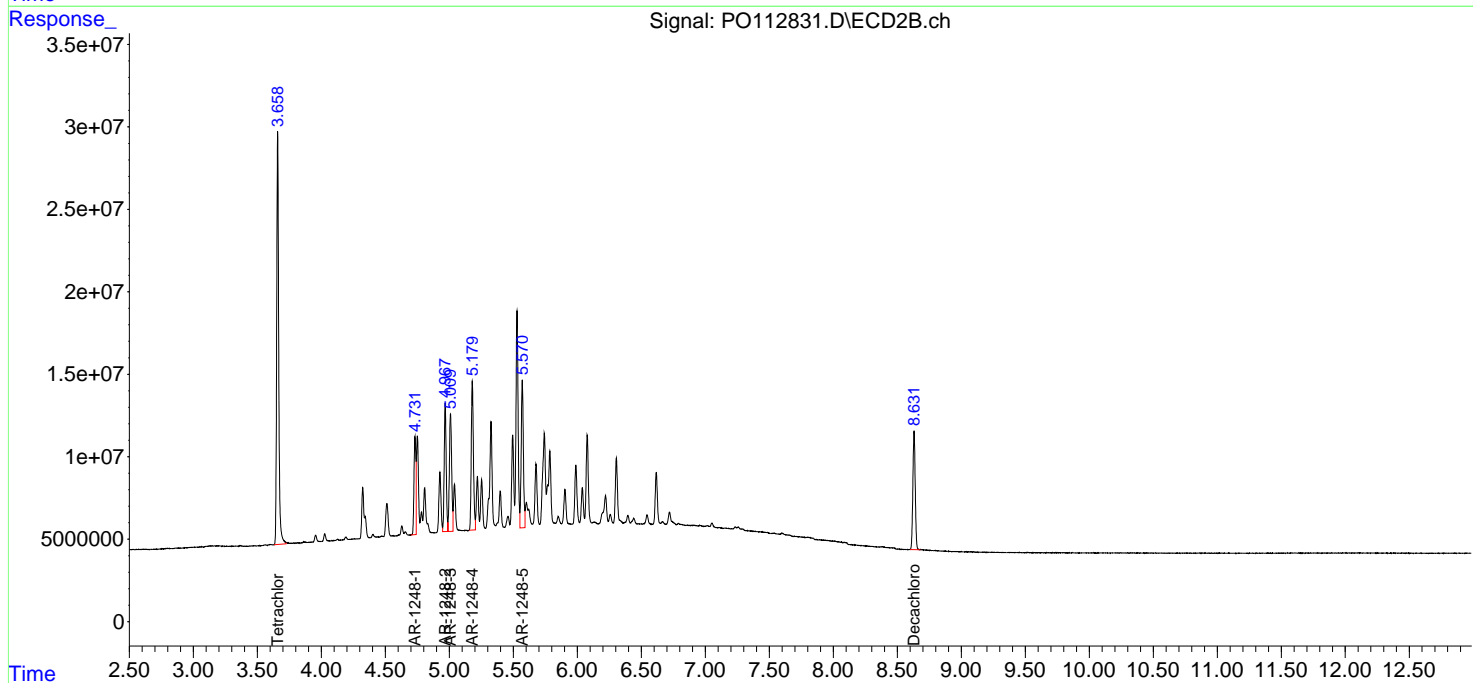
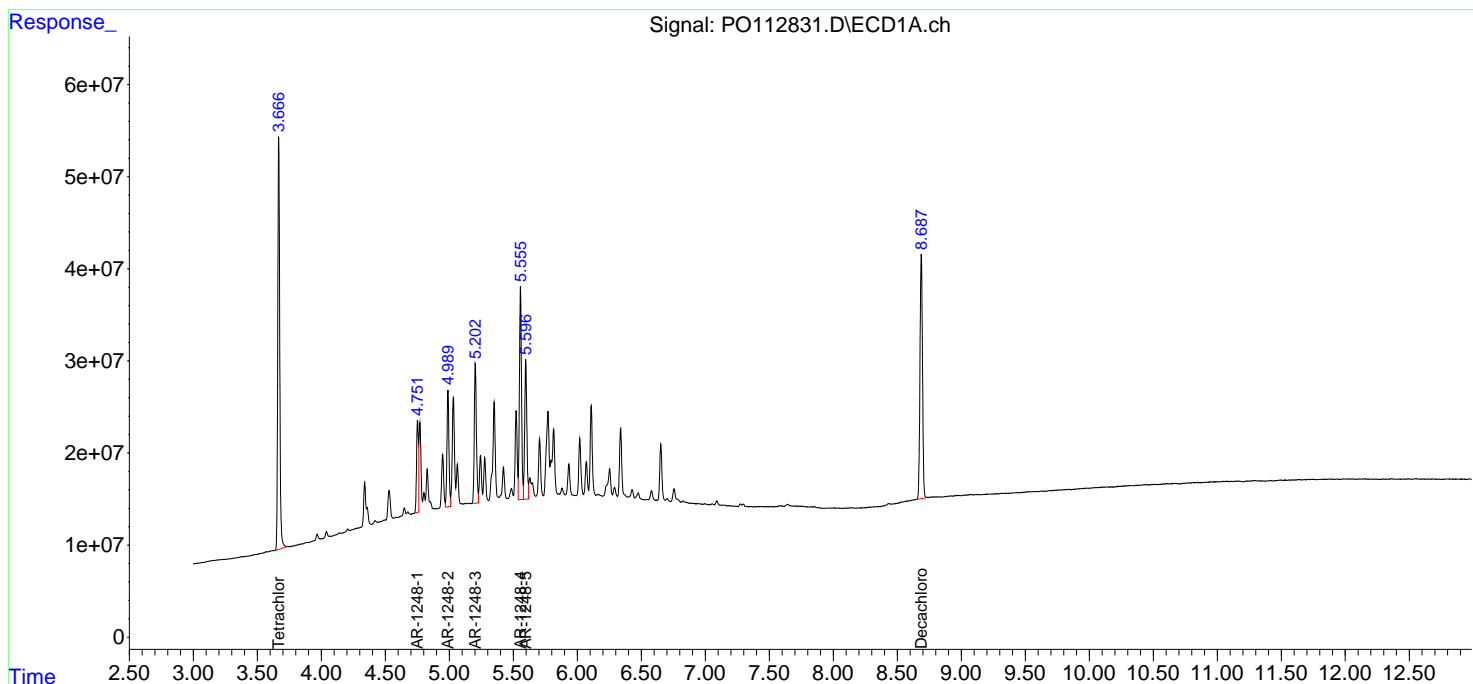
(f)=RT Delta > 1/2 Window (#)=Amounts differ by > 25% (m)=manual int.

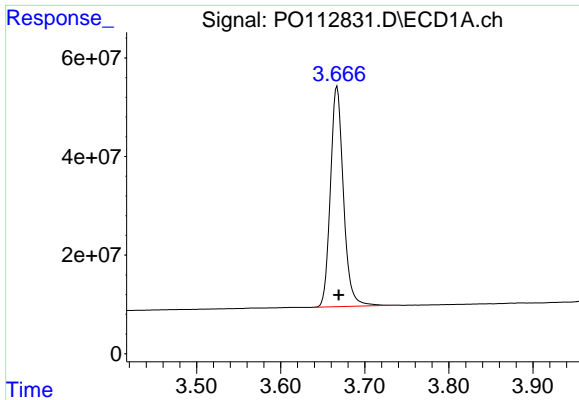
Data Path : Z:\pestpcbsrv\HPCHEM1\ECD_O\Data\PO081125\
 Data File : PO112831.D
 Signal(s) : Signal #1: ECD1A.ch Signal #2: ECD2B.ch
 Acq On : 11 Aug 2025 10:23
 Operator : YP/AJ
 Sample : AR1248CCC500
 Misc :
 ALS Vial : 5 Sample Multiplier: 1

Instrument :
 ECD_O
 ClientSampleId :
 AR1248CCC500

Integration File signal 1: autoint1.e
 Integration File signal 2: autoint2.e
 Quant Time: Aug 11 11:21:09 2025
 Quant Method : Z:\pestpcbsrv\HPCHEM1\ECD_O\methods\PO072325.M
 Quant Title : GC EXTRACTABLES
 QLast Update : Thu Jul 24 04:54:06 2025
 Response via : Initial Calibration
 Integrator: ChemStation

Volume Inj. : 2 µl
 Signal #1 Phase : ZB-MR1 Signal #2 Phase: ZB-MR2
 Signal #1 Info : 30Mx0.32mmx 0.50µ Signal #2 Info : 30M x 0.32mm x 0.25µm

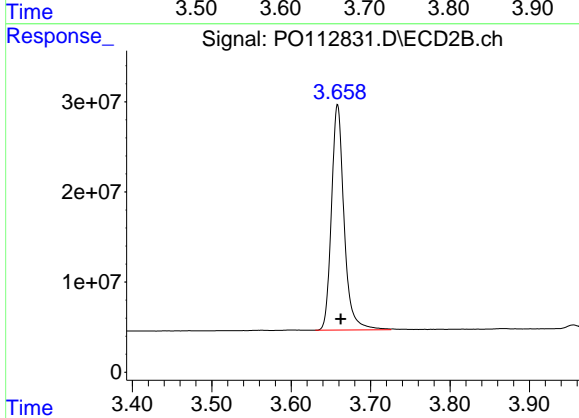




#1 Tetrachloro-m-xylene

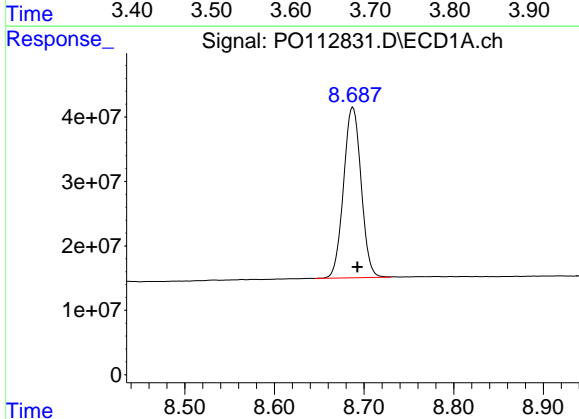
R.T.: 3.667 min
 Delta R.T.: -0.002 min
 Response: 479727487
 Conc: 59.00 ng/ml

Instrument :
 ECD_O
 ClientSampleId :
 AR1248CCC500



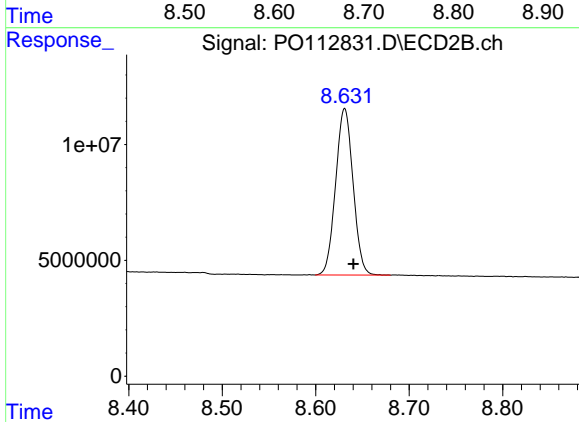
#1 Tetrachloro-m-xylene

R.T.: 3.658 min
 Delta R.T.: -0.004 min
 Response: 275986448
 Conc: 55.54 ng/ml



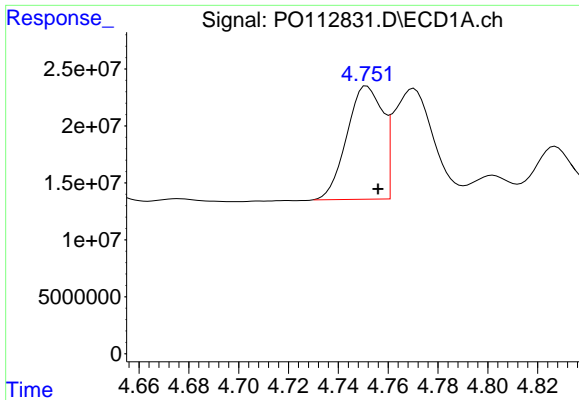
#2 Decachlorobiphenyl

R.T.: 8.688 min
 Delta R.T.: -0.005 min
 Response: 360394423
 Conc: 49.29 ng/ml



#2 Decachlorobiphenyl

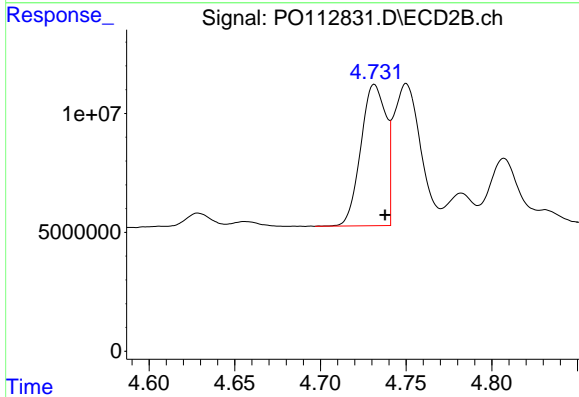
R.T.: 8.631 min
 Delta R.T.: -0.009 min
 Response: 93062000
 Conc: 52.66 ng/ml



#21 AR-1248-1

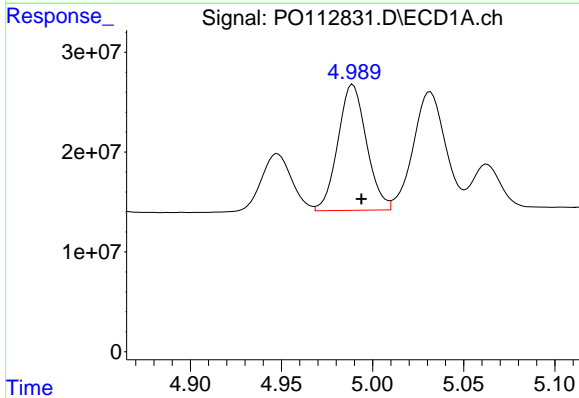
R.T.: 4.752 min
 Delta R.T.: -0.004 min
 Response: 99641707
 Conc: 532.25 ng/ml

Instrument :
 ECD_O
 ClientSampleId :
 AR1248CCC500



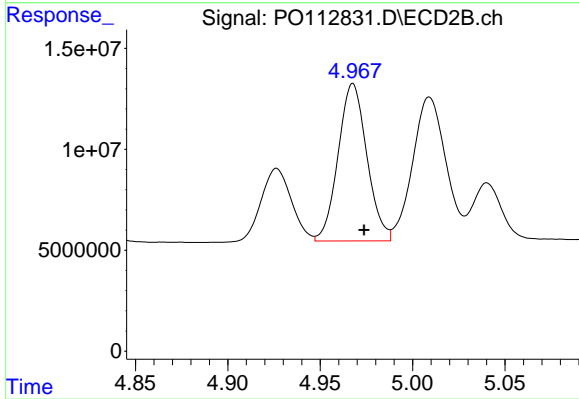
#21 AR-1248-1

R.T.: 4.731 min
 Delta R.T.: -0.006 min
 Response: 60646518
 Conc: 499.11 ng/ml



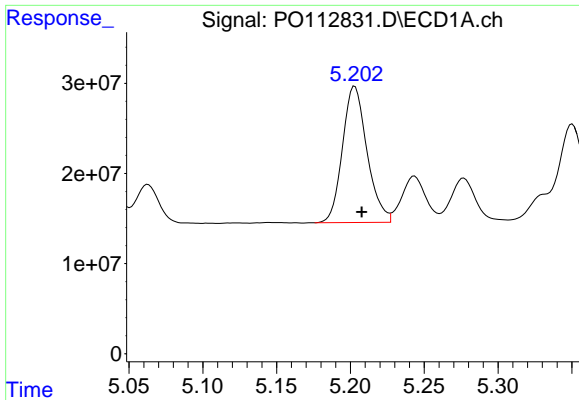
#22 AR-1248-2

R.T.: 4.989 min
 Delta R.T.: -0.005 min
 Response: 137788047
 Conc: 540.11 ng/ml



#22 AR-1248-2

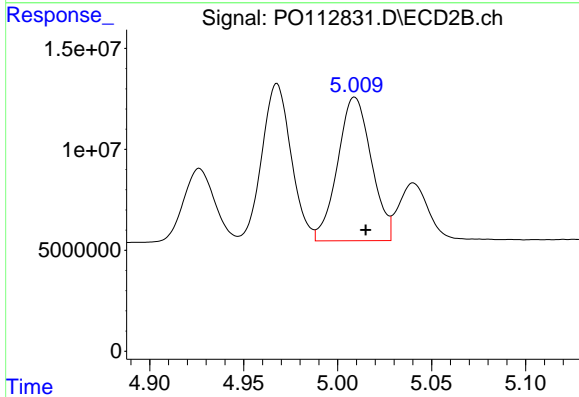
R.T.: 4.968 min
 Delta R.T.: -0.006 min
 Response: 84314881
 Conc: 498.08 ng/ml



#23 AR-1248-3

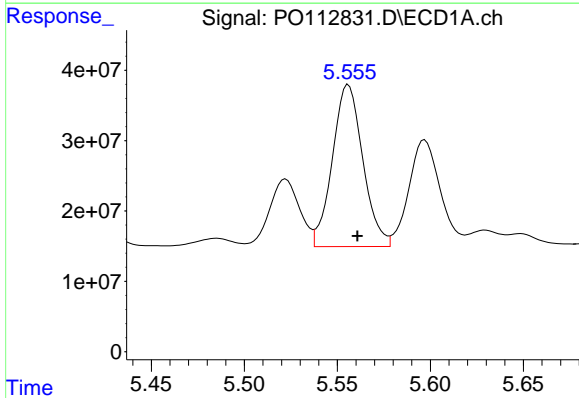
R.T.: 5.203 min
 Delta R.T.: -0.005 min
 Response: 175233541
 Conc: 509.84 ng/ml

Instrument :
 ECD_O
 ClientSampleId :
 AR1248CCC500



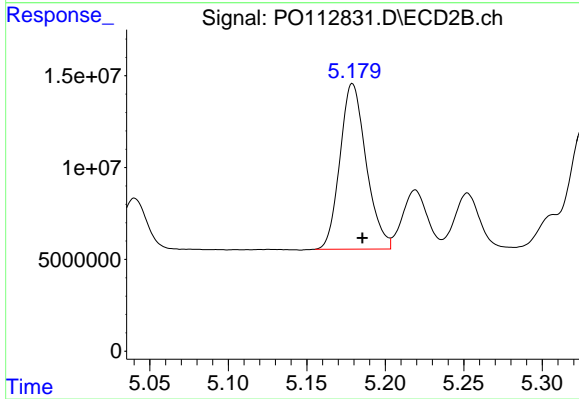
#23 AR-1248-3

R.T.: 5.009 min
 Delta R.T.: -0.006 min
 Response: 88885683
 Conc: 500.35 ng/ml



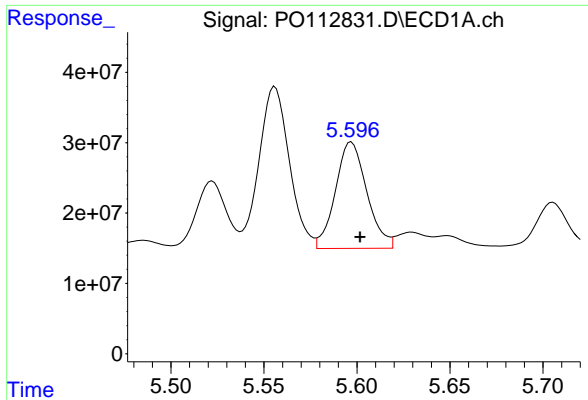
#24 AR-1248-4

R.T.: 5.556 min
 Delta R.T.: -0.005 min
 Response: 262534961
 Conc: 516.72 ng/ml



#24 AR-1248-4

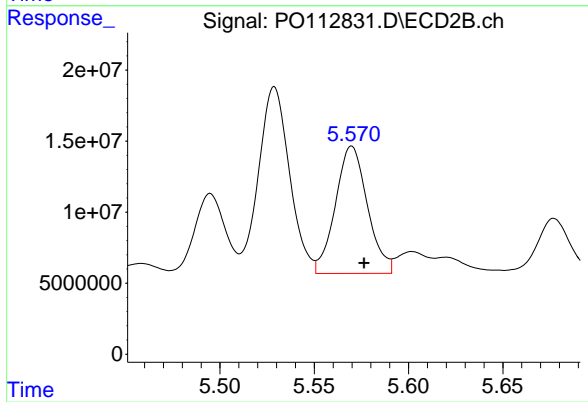
R.T.: 5.179 min
 Delta R.T.: -0.006 min
 Response: 104692145
 Conc: 502.47 ng/ml



#25 AR-1248-5

R.T.: 5.597 min
Delta R.T.: -0.005 min
Response: 177971199
Conc: 509.08 ng/ml

Instrument :
ECD_O
ClientSampleId :
AR1248CCC500



#25 AR-1248-5

R.T.: 5.570 min
Delta R.T.: -0.007 min
Response: 106034763
Conc: 493.72 ng/ml