

Data Path : Z:\pestpcbsrv\HPCHEM1\ECD_0\Data\P0081125\
 Data File : P0112833.D
 Signal(s) : Signal #1: ECD1A.ch Signal #2: ECD2B.ch
 Acq On : 11 Aug 2025 11:00
 Operator : YP/AJ
 Sample : I.BLK
 Misc :
 ALS Vial : 2 Sample Multiplier: 1

Instrument :
 ECD_0
 ClientSampleId :
 I.BLK

Integration File signal 1: autoint1.e
 Integration File signal 2: autoint2.e
 Quant Time: Aug 11 11:22:27 2025
 Quant Method : Z:\pestpcbsrv\HPCHEM1\ECD_0\methods\P0072325.M
 Quant Title : GC EXTRACTABLES
 QLast Update : Thu Jul 24 04:54:06 2025
 Response via : Initial Calibration
 Integrator: ChemStation

Volume Inj. : 2 µl
 Signal #1 Phase : ZB-MR1 Signal #2 Phase: ZB-MR2
 Signal #1 Info : 30Mx0.32mmx 0.50µ Signal #2 Info : 30M x 0.32mm x 0.25µm

Compound	RT#1	RT#2	Resp#1	Resp#2	ng/ml	ng/ml

System Monitoring Compounds						
1) SA Tetrachlo...	3.667	3.658	178.5E6	104.9E6	21.950	21.111
2) SA Decachlor...	8.687	8.631	139.8E6	36523872	19.122	20.669

Target Compounds

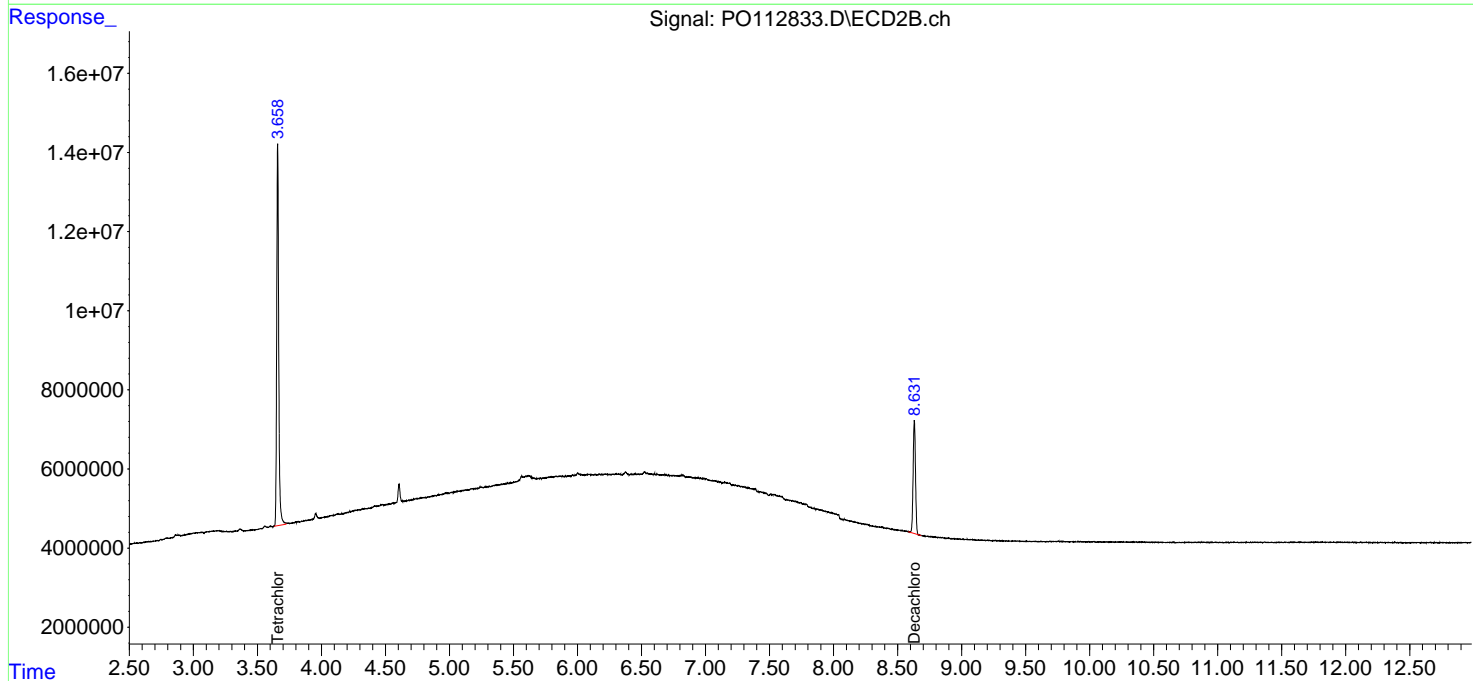
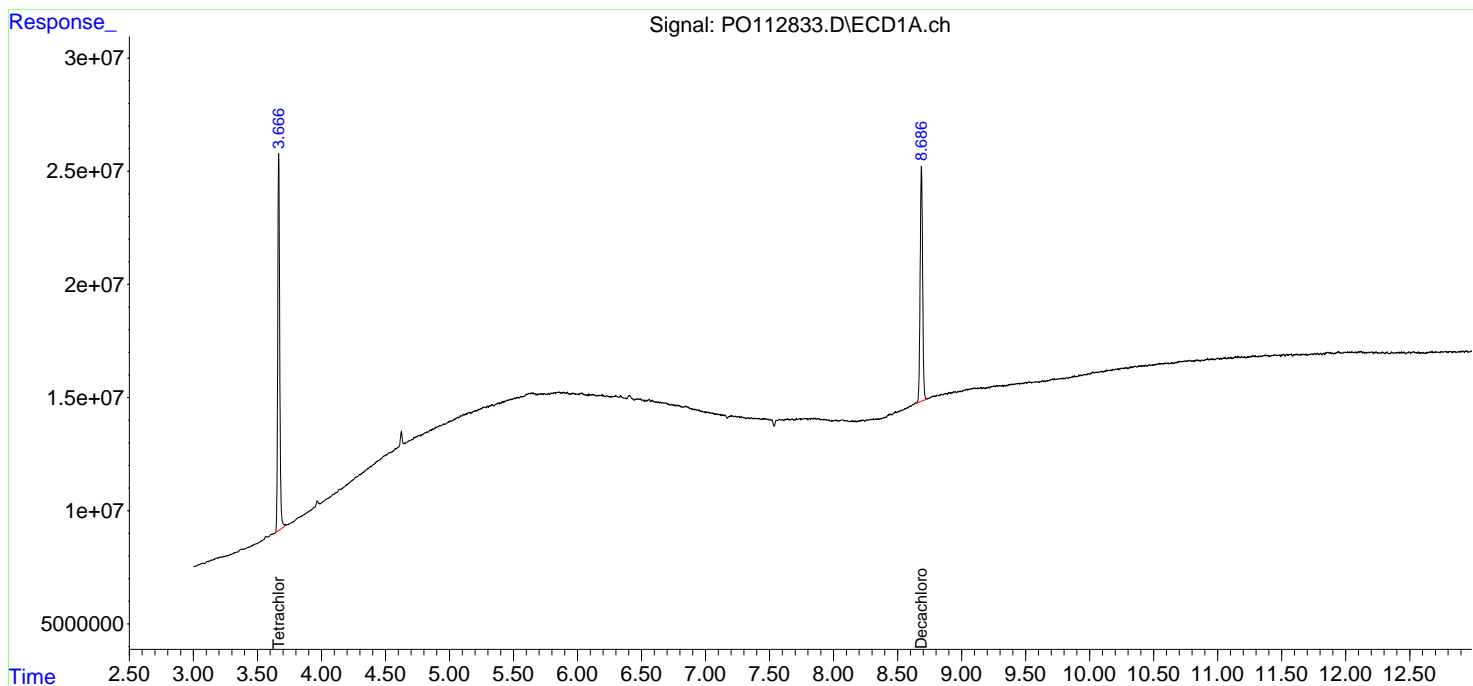
 (f)=RT Delta > 1/2 Window (#)=Amounts differ by > 25% (m)=manual int.

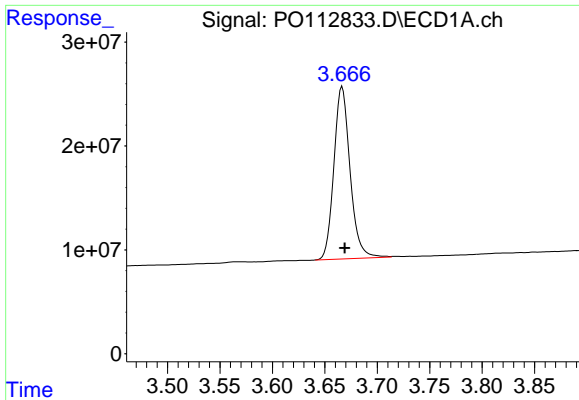
Data Path : Z:\pestpcbsrv\HPCHEM1\ECD_0\Data\PO081125\
 Data File : PO112833.D
 Signal(s) : Signal #1: ECD1A.ch Signal #2: ECD2B.ch
 Acq On : 11 Aug 2025 11:00
 Operator : YP/AJ
 Sample : I.BLK
 Misc :
 ALS Vial : 2 Sample Multiplier: 1

Instrument :
 ECD_0
 ClientSampleId :
 I.BLK

Integration File signal 1: autoint1.e
 Integration File signal 2: autoint2.e
 Quant Time: Aug 11 11:22:27 2025
 Quant Method : Z:\pestpcbsrv\HPCHEM1\ECD_0\methods\PO072325.M
 Quant Title : GC EXTRACTABLES
 QLast Update : Thu Jul 24 04:54:06 2025
 Response via : Initial Calibration
 Integrator: ChemStation

Volume Inj. : 2 µl
 Signal #1 Phase : ZB-MR1 Signal #2 Phase: ZB-MR2
 Signal #1 Info : 30Mx0.32mmx 0.50µ Signal #2 Info : 30M x 0.32mm x 0.25µm

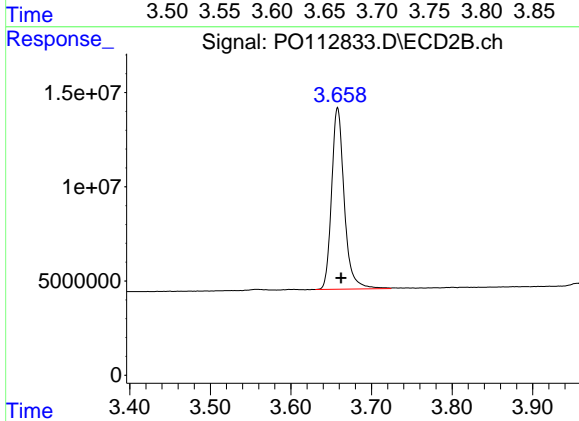




#1 Tetrachloro-m-xylene

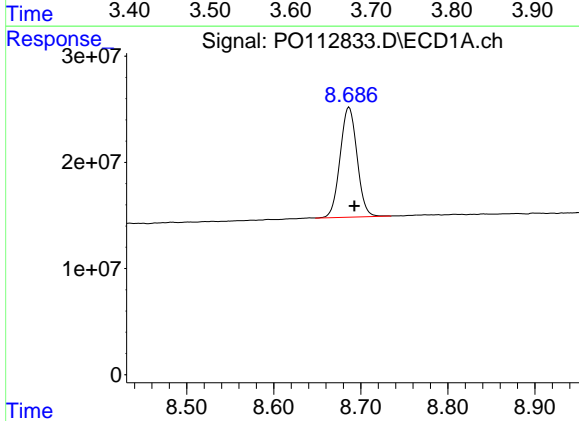
R.T.: 3.667 min
 Delta R.T.: -0.002 min
 Response: 178488144
 Conc: 21.95 ng/ml

Instrument :
 ECD_O
 ClientSampleId :
 I.BLK



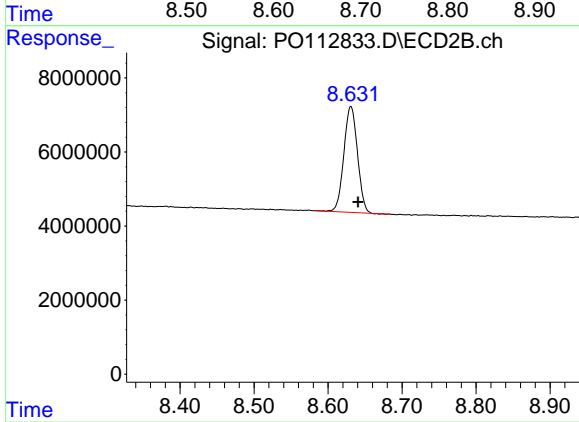
#1 Tetrachloro-m-xylene

R.T.: 3.658 min
 Delta R.T.: -0.004 min
 Response: 104902646
 Conc: 21.11 ng/ml



#2 Decachlorobiphenyl

R.T.: 8.687 min
 Delta R.T.: -0.006 min
 Response: 139813438
 Conc: 19.12 ng/ml



#2 Decachlorobiphenyl

R.T.: 8.631 min
 Delta R.T.: -0.010 min
 Response: 36523872
 Conc: 20.67 ng/ml