

Data Path : Z:\pestpcbsrv\HPCHEM1\ECD_0\Data\P0081125\
 Data File : P0112838.D
 Signal(s) : Signal #1: ECD1A.ch Signal #2: ECD2B.ch
 Acq On : 11 Aug 2025 15:30
 Operator : YP/AJ
 Sample : Q2807-02
 Misc :
 ALS Vial : 11 Sample Multiplier: 1

Instrument :
 ECD_0
ClientSampleId :
 COMP-5

Integration File signal 1: autoint1.e
 Integration File signal 2: autoint2.e
 Quant Time: Aug 11 15:45:15 2025
 Quant Method : Z:\pestpcbsrv\HPCHEM1\ECD_0\methods\P0072325.M
 Quant Title : GC EXTRACTABLES
 QLast Update : Thu Jul 24 04:54:06 2025
 Response via : Initial Calibration
 Integrator: ChemStation

Volume Inj. : 2 µl
 Signal #1 Phase : ZB-MR1 Signal #2 Phase: ZB-MR2
 Signal #1 Info : 30Mx0.32mmx 0.50µ Signal #2 Info : 30M x 0.32mm x 0.25µm

Compound	RT#1	RT#2	Resp#1	Resp#2	ng/ml	ng/ml

System Monitoring Compounds						
1) SA Tetrachlo...	3.666	3.658	289.3E6	168.1E6	35.572	33.825
2) SA Decachlor...	8.687	8.631	208.2E6	55392027	28.480	31.346

Target Compounds

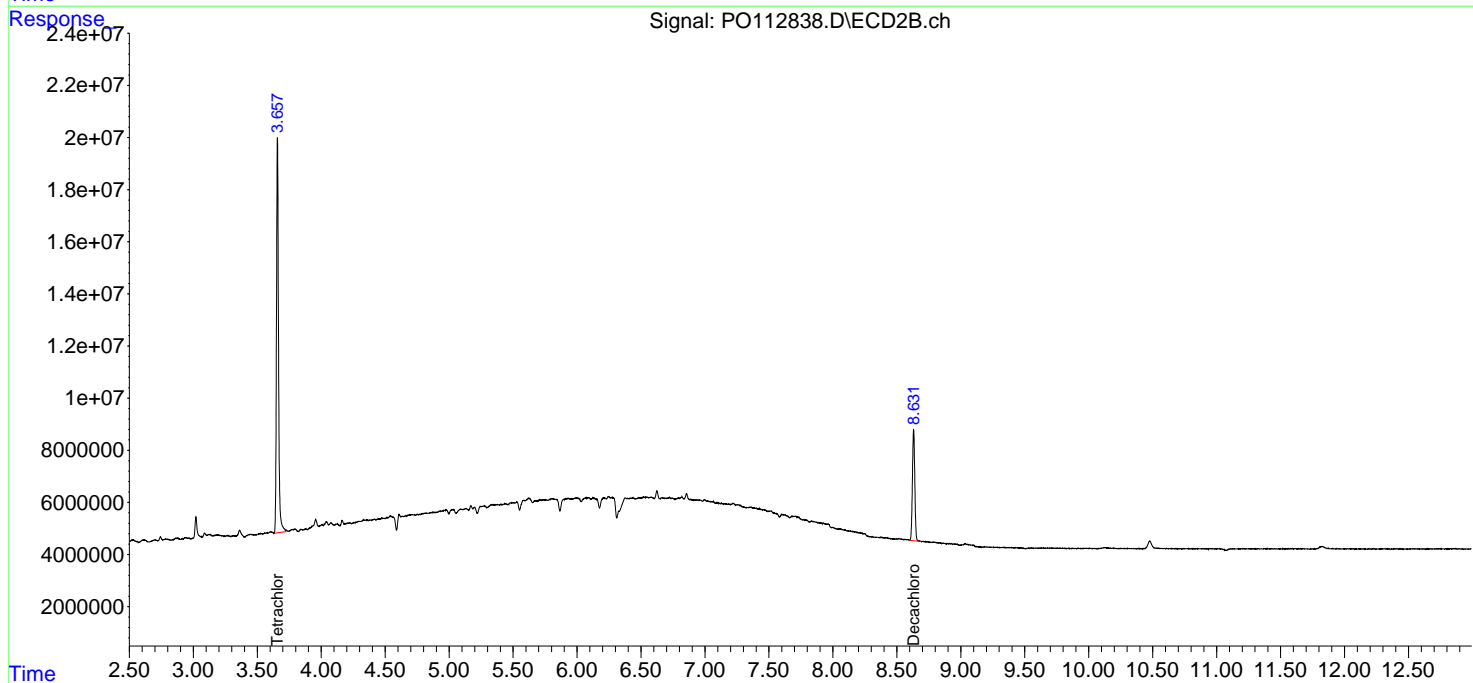
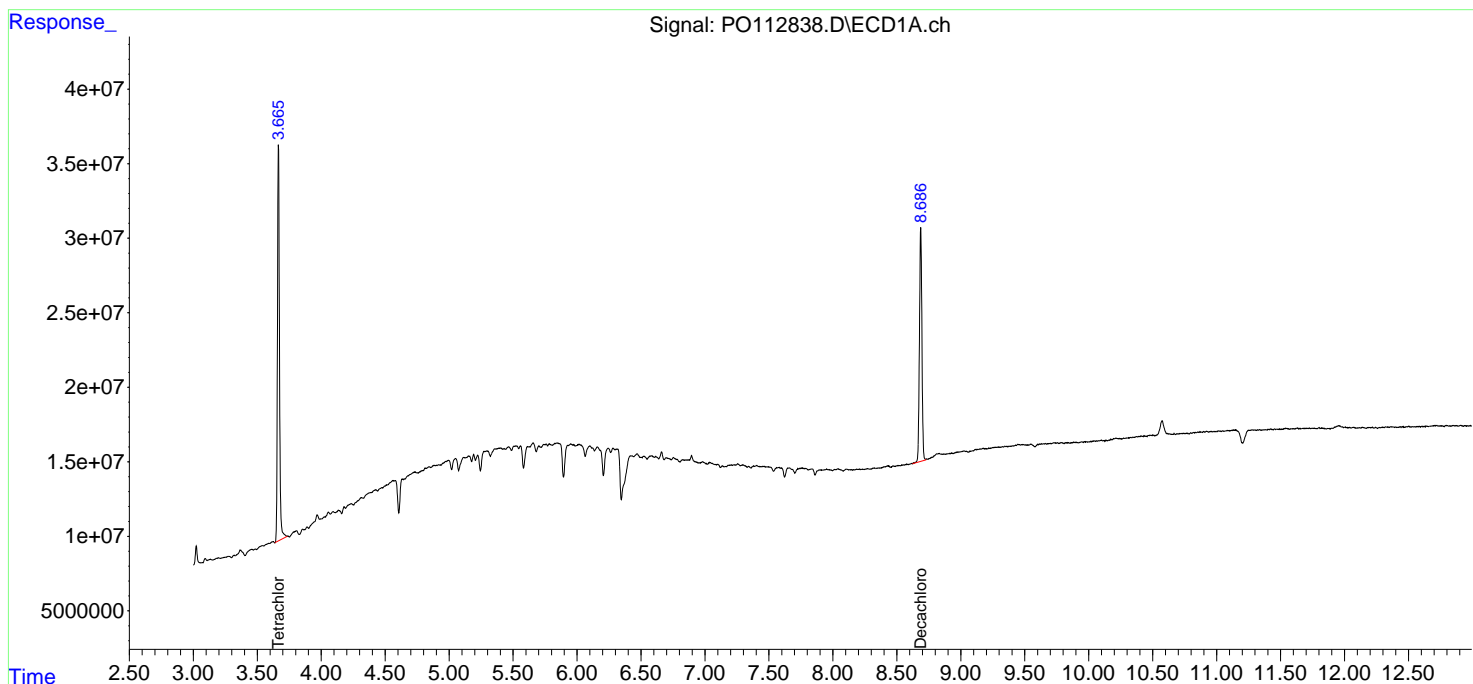
 (f)=RT Delta > 1/2 Window (#)=Amounts differ by > 25% (m)=manual int.

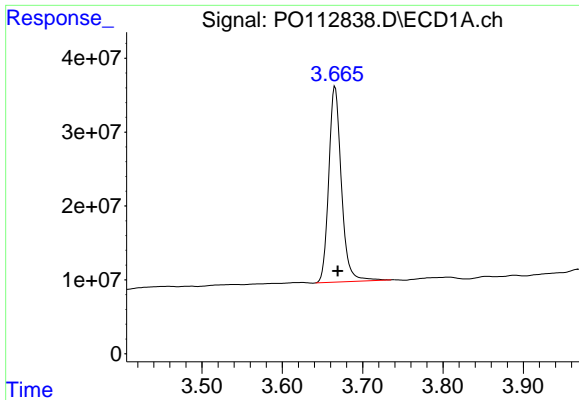
Data Path : Z:\pestpcbsrv\HPCHEM1\ECD_0\Data\PO081125\
 Data File : PO112838.D
 Signal(s) : Signal #1: ECD1A.ch Signal #2: ECD2B.ch
 Acq On : 11 Aug 2025 15:30
 Operator : YP/AJ
 Sample : Q2807-02
 Misc :
 ALS Vial : 11 Sample Multiplier: 1

Instrument :
 ECD_0
 ClientSampleId :
 COMP-5

Integration File signal 1: autoint1.e
 Integration File signal 2: autoint2.e
 Quant Time: Aug 11 15:45:15 2025
 Quant Method : Z:\pestpcbsrv\HPCHEM1\ECD_0\methods\PO072325.M
 Quant Title : GC EXTRACTABLES
 QLast Update : Thu Jul 24 04:54:06 2025
 Response via : Initial Calibration
 Integrator: ChemStation

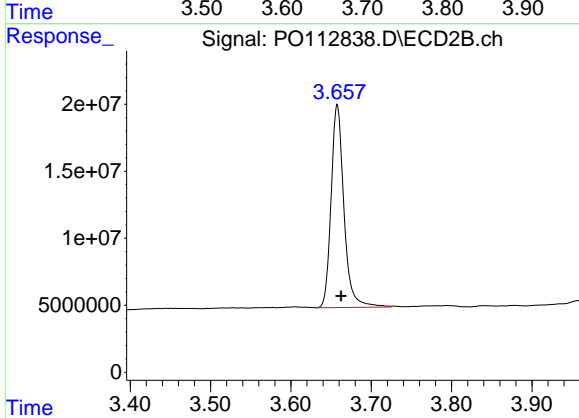
Volume Inj. : 2 µl
 Signal #1 Phase : ZB-MR1 Signal #2 Phase: ZB-MR2
 Signal #1 Info : 30Mx0.32mmx 0.50µ Signal #2 Info : 30M x 0.32mm x 0.25µm



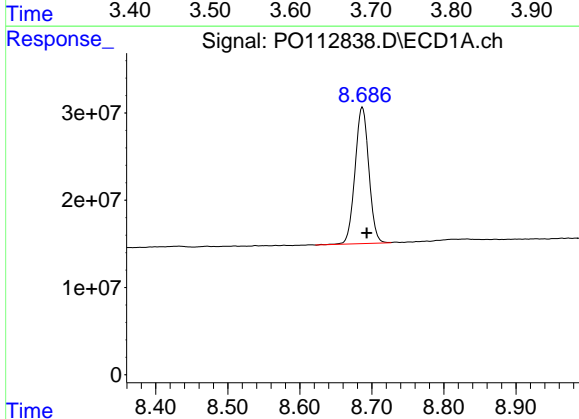


#1 Tetrachloro-m-xylene
 R.T.: 3.666 min
 Delta R.T.: -0.003 min
 Response: 289256774
 Conc: 35.57 ng/ml

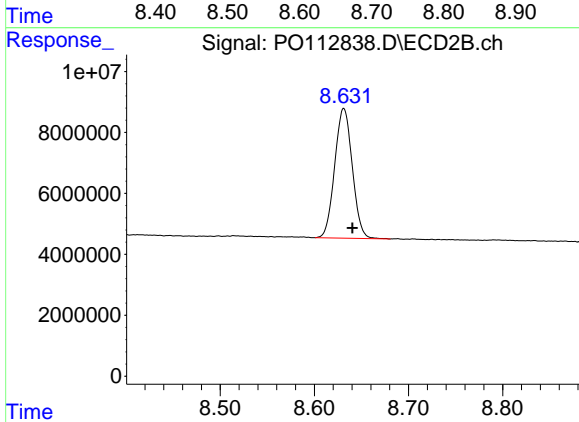
Instrument :
 ECD_O
 ClientSampleId :
 COMP-5



#1 Tetrachloro-m-xylene
 R.T.: 3.658 min
 Delta R.T.: -0.005 min
 Response: 168083451
 Conc: 33.83 ng/ml



#2 Decachlorobiphenyl
 R.T.: 8.687 min
 Delta R.T.: -0.006 min
 Response: 208237247
 Conc: 28.48 ng/ml



#2 Decachlorobiphenyl
 R.T.: 8.631 min
 Delta R.T.: -0.009 min
 Response: 55392027
 Conc: 31.35 ng/ml