

Data Path : Z:\pestpcbsrv\HPCHEM1\ECD_0\Data\P0081125\
 Data File : PO112840.D
 Signal(s) : Signal #1: ECD1A.ch Signal #2: ECD2B.ch
 Acq On : 11 Aug 2025 16:07
 Operator : YP/AJ
 Sample : Q2807-02MSD
 Misc :
 ALS Vial : 13 Sample Multiplier: 1

Instrument :
 ECD_0
ClientSampleId :
 COMP-5MSD

Manual Integrations
APPROVED

Reviewed By :Yogesh Patel 08/12/2025
 Supervised By :mohammad ahmed 08/13/2025

Integration File signal 1: autoint1.e
 Integration File signal 2: autoint2.e
 Quant Time: Aug 12 02:41:31 2025
 Quant Method : Z:\pestpcbsrv\HPCHEM1\ECD_0\methods\P0072325.M
 Quant Title : GC EXTRACTABLES
 QLast Update : Thu Jul 24 04:54:06 2025
 Response via : Initial Calibration
 Integrator: ChemStation

Volume Inj. : 2 µl
 Signal #1 Phase : ZB-MR1 Signal #2 Phase: ZB-MR2
 Signal #1 Info : 30Mx0.32mmx 0.50µ Signal #2 Info : 30M x 0.32mm x 0.25µm

	Compound	RT#1	RT#2	Resp#1	Resp#2	ng/ml	ng/ml

System Monitoring Compounds							
1)	SA Tetrachlo...	3.666	3.659	190.3E6	110.6E6	23.399	22.247
2)	SA Decachlor...	8.685	8.631	146.6E6	39877728	20.044	22.567
Target Compounds							
3)	L1 AR-1016-1	4.751	4.732	151.6E6	98620340	564.859	563.522
4)	L1 AR-1016-2	4.770	4.751	231.1E6	141.1E6	568.999	541.513
5)	L1 AR-1016-3	4.827	4.925	145.5E6	70365204	555.894	517.519
6)	L1 AR-1016-4	4.947	4.968	120.0E6	57420594	566.459	516.908
7)	L1 AR-1016-5	5.203	5.180	124.5E6	74608425	567.172	520.634
31)	L7 AR-1260-1	6.239	6.207	286.3E6	143.4E6	651.686m	576.868m
32)	L7 AR-1260-2	6.428	6.396	373.4E6	177.0E6	542.818m	537.299m
33)	L7 AR-1260-3	6.795	6.547	281.8E6	145.4E6	479.244	566.079m
34)	L7 AR-1260-4	7.053	7.016	216.5E6	93677906	480.004	489.664
35)	L7 AR-1260-5	7.297	7.258	587.7E6	214.1E6	474.243	519.384

(f)=RT Delta > 1/2 Window (#)=Amounts differ by > 25% (m)=manual int.

Data Path : Z:\pestpcbsrv\HPCHEM1\ECD_O\Data\PO081125\
 Data File : PO112840.D
 Signal(s) : Signal #1: ECD1A.ch Signal #2: ECD2B.ch
 Acq On : 11 Aug 2025 16:07
 Operator : YP/AJ
 Sample : Q2807-02MSD
 Misc :
 ALS Vial : 13 Sample Multiplier: 1

Instrument :

ECD_O

ClientSampleId :

COMP-5MSD

Manual Integrations

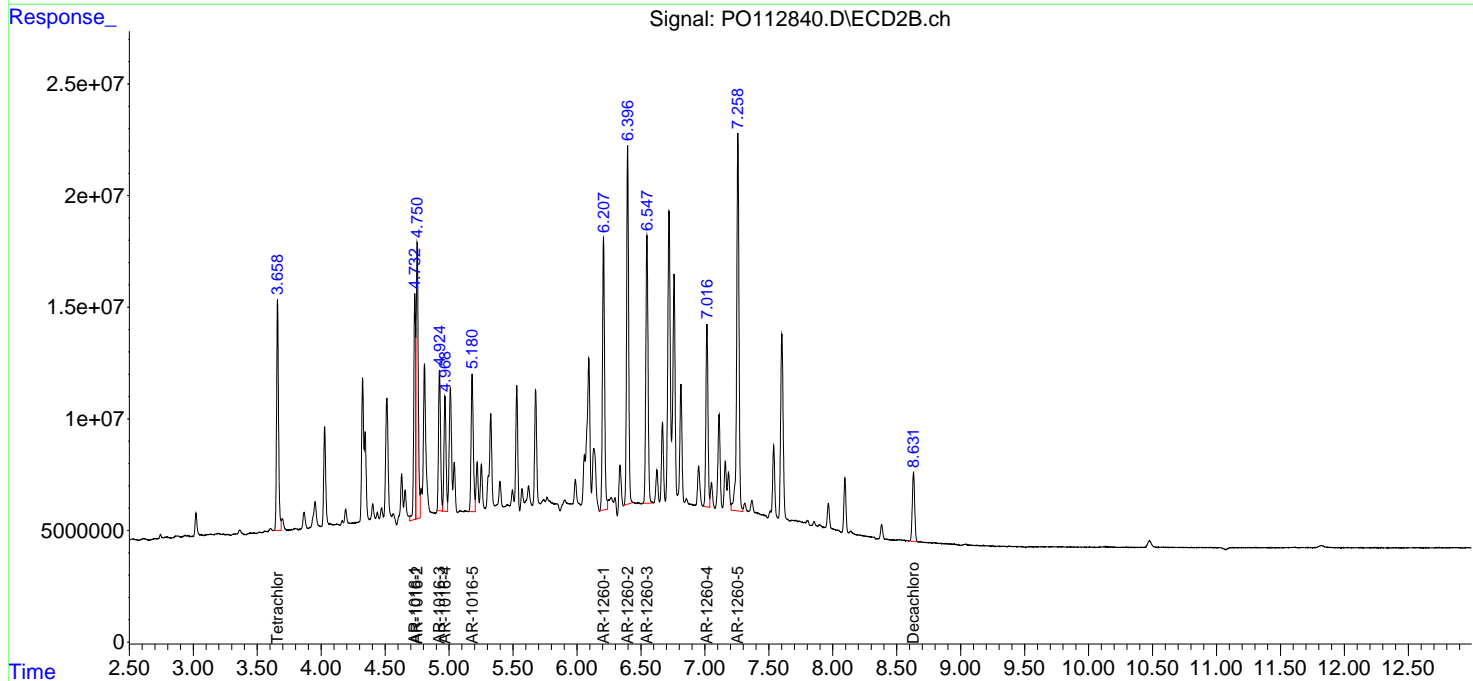
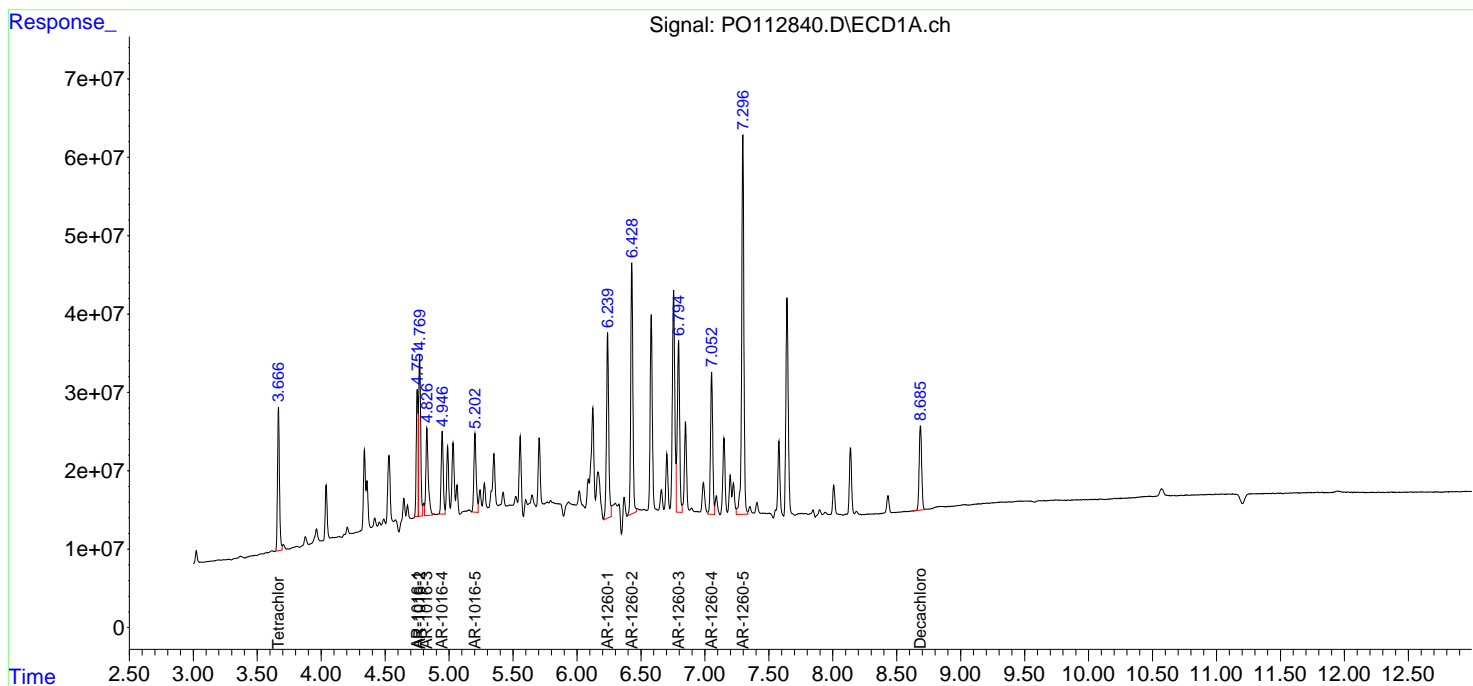
APPROVED

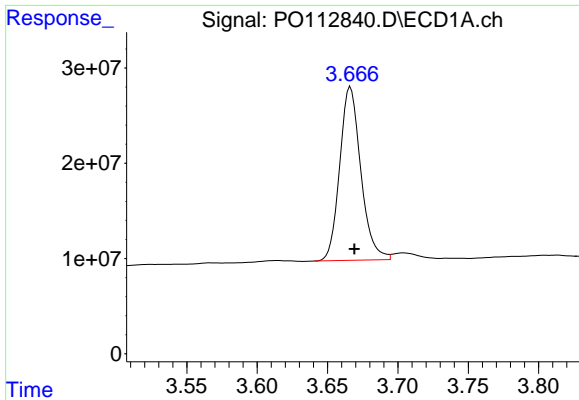
Reviewed By :Yogesh Patel 08/12/2025

Supervised By :mohammad ahmed 08/13/2025

Integration File signal 1: autoint1.e
 Integration File signal 2: autoint2.e
 Quant Time: Aug 12 02:41:31 2025
 Quant Method : Z:\pestpcbsrv\HPCHEM1\ECD_O\methods\PO072325.M
 Quant Title : GC EXTRACTABLES
 QLast Update : Thu Jul 24 04:54:06 2025
 Response via : Initial Calibration
 Integrator: ChemStation

Volume Inj. : 2 µl
 Signal #1 Phase : ZB-MR1 Signal #2 Phase: ZB-MR2
 Signal #1 Info : 30Mx0.32mmx 0.50µ Signal #2 Info : 30M x 0.32mm x 0.25µm

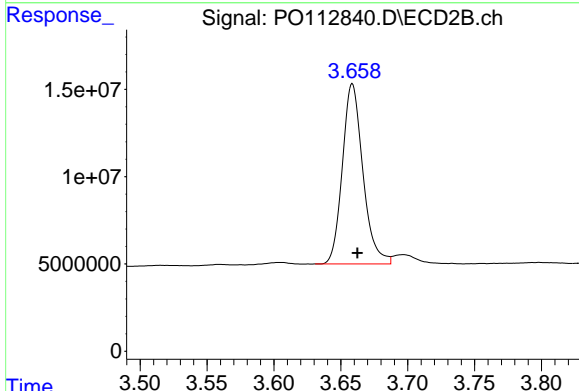




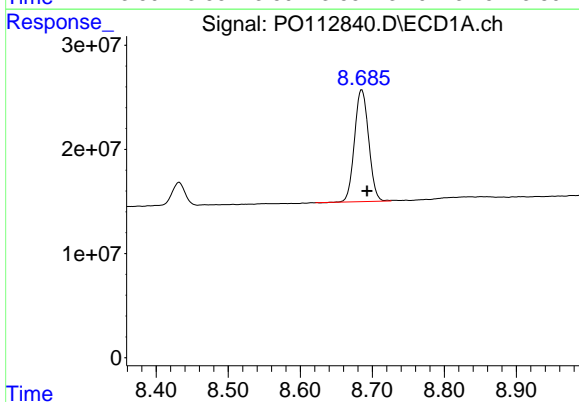
#1 Tetrachloro-m-xylene
 R.T.: 3.666 min
 Delta R.T.: -0.003 min
 Response: 190274417
 Conc: 23.40 ng/ml

Instrument :
 ECD_O
 ClientSampleId :
 COMP-5MSD

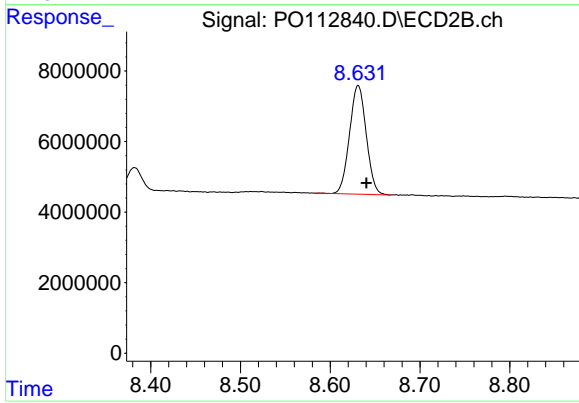
Manual Integrations
APPROVED
 Reviewed By :Yogesh Patel 08/12/2025
 Supervised By :mohammad ahmed 08/13/2025



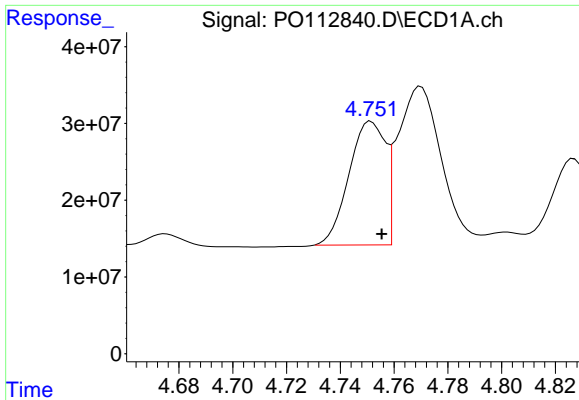
#1 Tetrachloro-m-xylene
 R.T.: 3.659 min
 Delta R.T.: -0.004 min
 Response: 110550701
 Conc: 22.25 ng/ml



#2 Decachlorobiphenyl
 R.T.: 8.685 min
 Delta R.T.: -0.007 min
 Response: 146560838
 Conc: 20.04 ng/ml



#2 Decachlorobiphenyl
 R.T.: 8.631 min
 Delta R.T.: -0.009 min
 Response: 39877728
 Conc: 22.57 ng/ml



#3 AR-1016-1

R.T.: 4.751 min
 Delta R.T.: -0.004 min
 Response: 151588949
 Conc: 564.86 ng/ml

Instrument :

ECD_O

ClientSampleId :

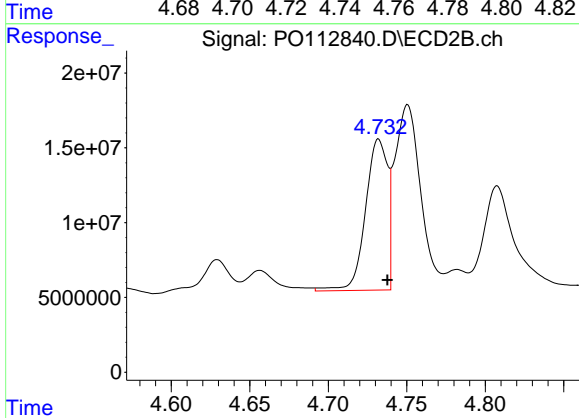
COMP-5MSD

Manual Integrations

APPROVED

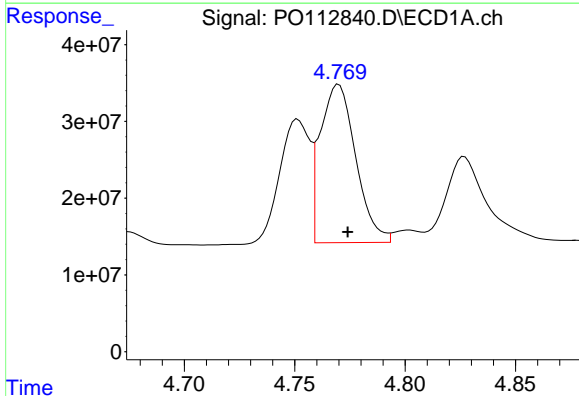
Reviewed By :Yogesh Patel 08/12/2025

Supervised By :mohammad ahmed 08/13/2025



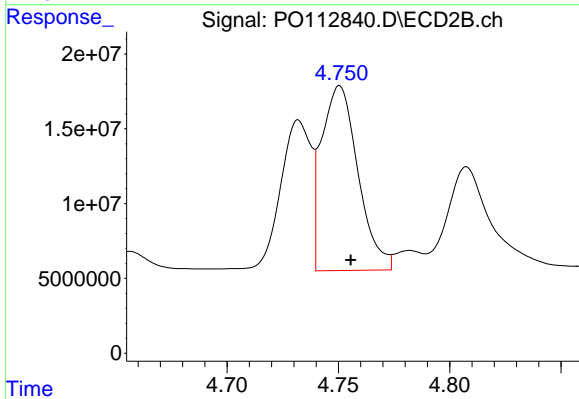
#3 AR-1016-1

R.T.: 4.732 min
 Delta R.T.: -0.005 min
 Response: 98620340
 Conc: 563.52 ng/ml



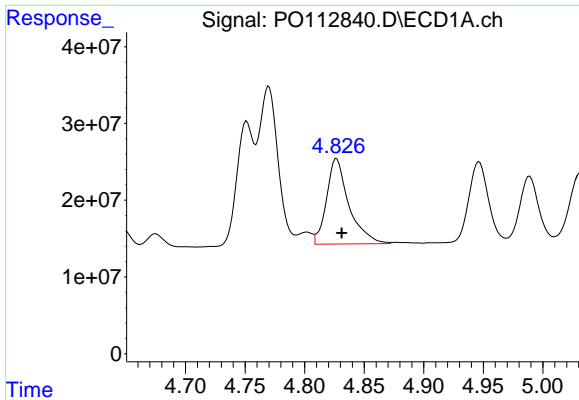
#4 AR-1016-2

R.T.: 4.770 min
 Delta R.T.: -0.004 min
 Response: 231080399
 Conc: 569.00 ng/ml



#4 AR-1016-2

R.T.: 4.751 min
 Delta R.T.: -0.005 min
 Response: 141061377
 Conc: 541.51 ng/ml



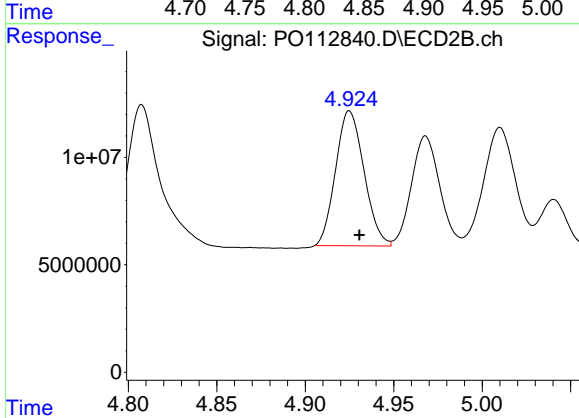
#5 AR-1016-3

R.T.: 4.827 min
 Delta R.T.: -0.004 min
 Response: 145462880
 Conc: 555.89 ng/ml

Instrument :
 ECD_O
 ClientSampleId :
 COMP-5MSD

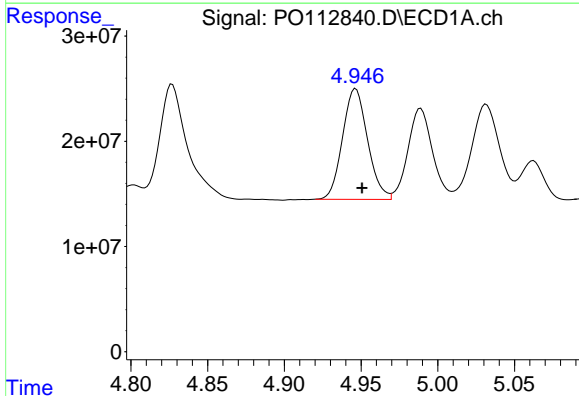
Manual Integrations
 APPROVED

Reviewed By :Yogesh Patel 08/12/2025
 Supervised By :mohammad ahmed 08/13/2025



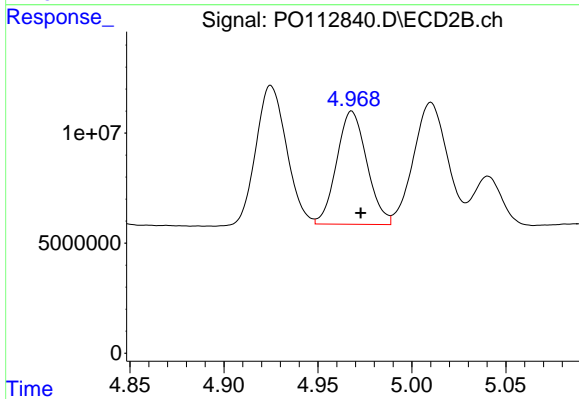
#5 AR-1016-3

R.T.: 4.925 min
 Delta R.T.: -0.006 min
 Response: 70365204
 Conc: 517.52 ng/ml



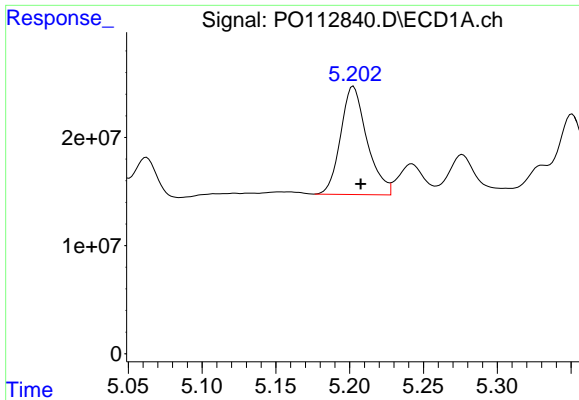
#6 AR-1016-4

R.T.: 4.947 min
 Delta R.T.: -0.004 min
 Response: 119999553
 Conc: 566.46 ng/ml



#6 AR-1016-4

R.T.: 4.968 min
 Delta R.T.: -0.005 min
 Response: 57420594
 Conc: 516.91 ng/ml



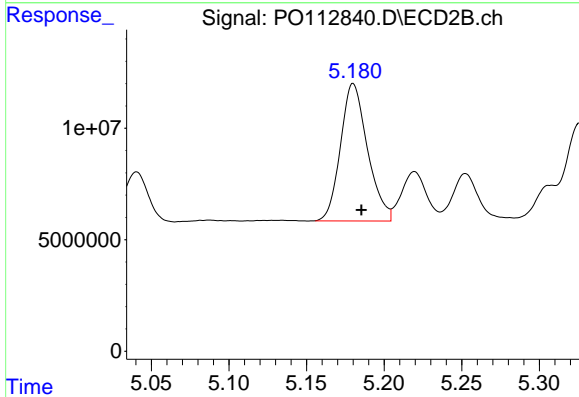
#7 AR-1016-5

R.T.: 5.203 min
 Delta R.T.: -0.005 min
 Response: 124477654
 Conc: 567.17 ng/ml

Instrument :
 ECD_O
 ClientSampleId :
 COMP-5MSD

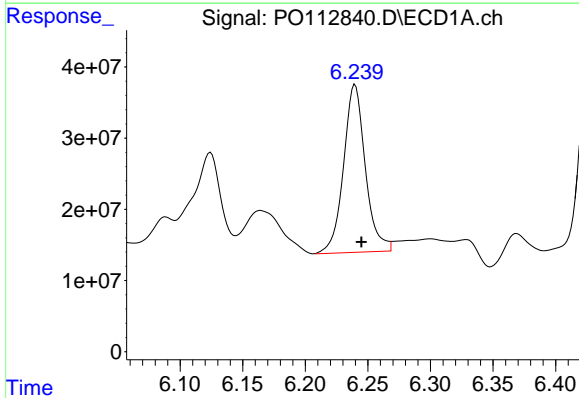
Manual Integrations
 APPROVED

Reviewed By :Yogesh Patel 08/12/2025
 Supervised By :mohammad ahmed 08/13/2025



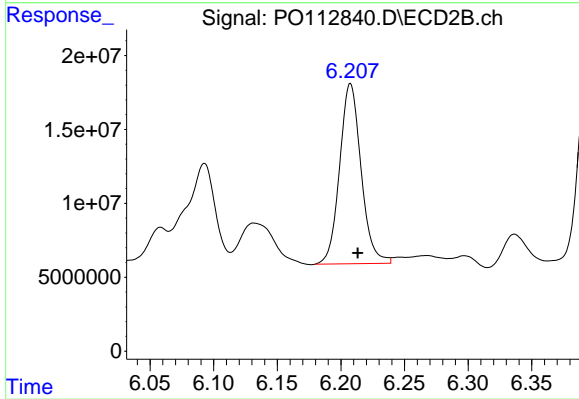
#7 AR-1016-5

R.T.: 5.180 min
 Delta R.T.: -0.005 min
 Response: 74608425
 Conc: 520.63 ng/ml



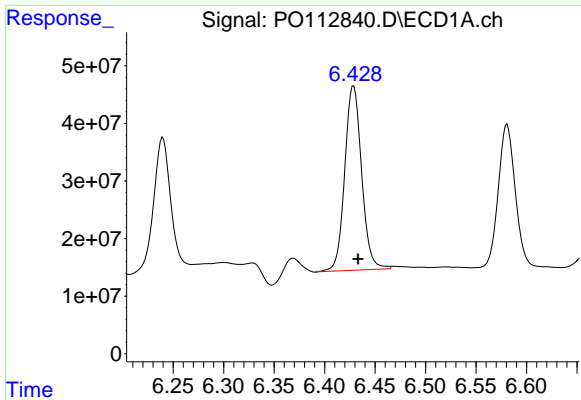
#31 AR-1260-1

R.T.: 6.239 min
 Delta R.T.: -0.006 min
 Response: 286305841
 Conc: 651.69 ng/ml m



#31 AR-1260-1

R.T.: 6.207 min
 Delta R.T.: -0.006 min
 Response: 143358187
 Conc: 576.87 ng/ml m



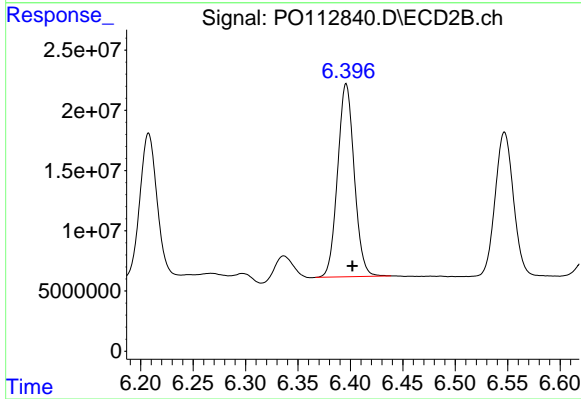
#32 AR-1260-2

R.T.: 6.428 min
 Delta R.T.: -0.005 min
 Response: 373400971
 Conc: 542.82 ng/ml

Instrument :
 ECD_O
 ClientSampleId :
 COMP-5MSD

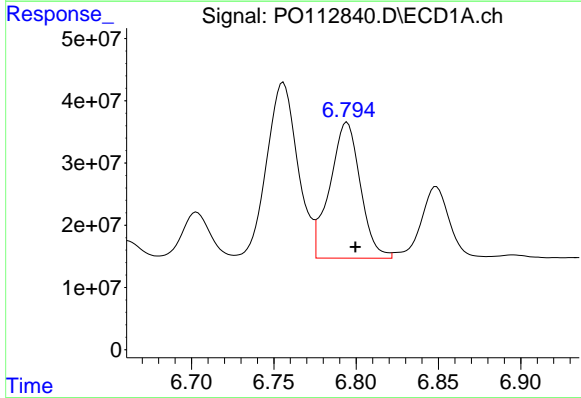
Manual Integrations
 APPROVED

Reviewed By :Yogesh Patel 08/12/2025
 Supervised By :mohammad ahmed 08/13/2025



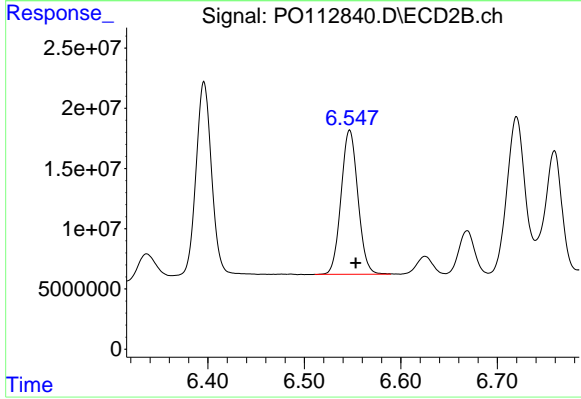
#32 AR-1260-2

R.T.: 6.396 min
 Delta R.T.: -0.006 min
 Response: 177036556
 Conc: 537.30 ng/ml m



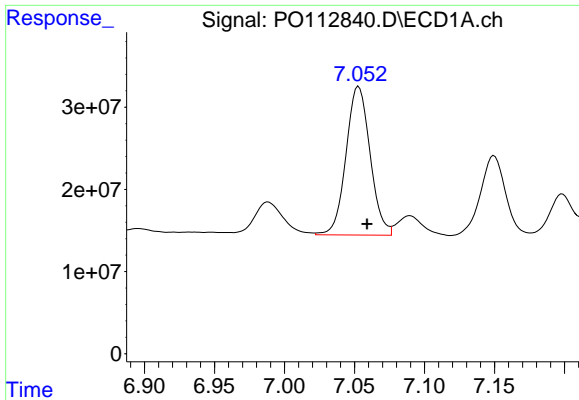
#33 AR-1260-3

R.T.: 6.795 min
 Delta R.T.: -0.005 min
 Response: 281804898
 Conc: 479.24 ng/ml



#33 AR-1260-3

R.T.: 6.547 min
 Delta R.T.: -0.007 min
 Response: 145437740
 Conc: 566.08 ng/ml m



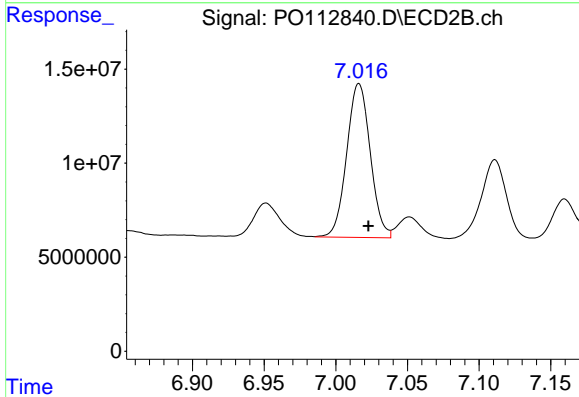
#34 AR-1260-4

R.T.: 7.053 min
 Delta R.T.: -0.006 min
 Response: 216483986
 Conc: 480.00 ng/ml

Instrument :
 ECD_O
 ClientSampleId :
 COMP-5MSD

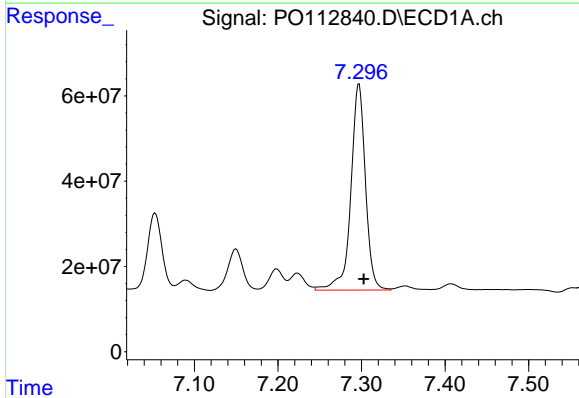
Manual Integrations
 APPROVED

Reviewed By :Yogesh Patel 08/12/2025
 Supervised By :mohammad ahmed 08/13/2025



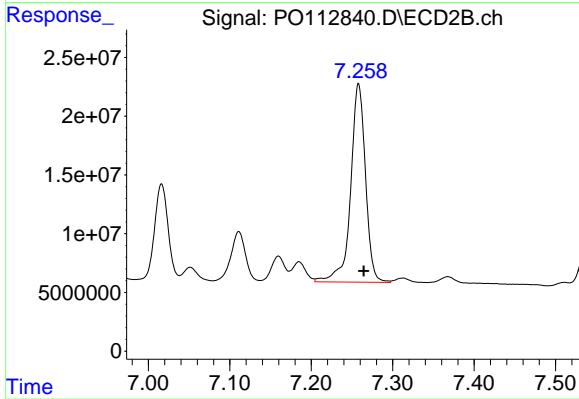
#34 AR-1260-4

R.T.: 7.016 min
 Delta R.T.: -0.007 min
 Response: 93677906
 Conc: 489.66 ng/ml



#35 AR-1260-5

R.T.: 7.297 min
 Delta R.T.: -0.006 min
 Response: 587652773
 Conc: 474.24 ng/ml



#35 AR-1260-5

R.T.: 7.258 min
 Delta R.T.: -0.006 min
 Response: 214086717
 Conc: 519.38 ng/ml