

Data Path : Z:\pestpcbsrv\HPCHEM1\ECD_0\Data\P0081125\
 Data File : P0112841.D
 Signal(s) : Signal #1: ECD1A.ch Signal #2: ECD2B.ch
 Acq On : 11 Aug 2025 16:24
 Operator : YP/AJ
 Sample : Q2807-03
 Misc :
 ALS Vial : 14 Sample Multiplier: 1

Instrument :
 ECD_0
 ClientSampleId :
 COMP-6

Integration File signal 1: autoint1.e
 Integration File signal 2: autoint2.e
 Quant Time: Aug 12 02:41:45 2025
 Quant Method : Z:\pestpcbsrv\HPCHEM1\ECD_0\methods\P0072325.M
 Quant Title : GC EXTRACTABLES
 QLast Update : Thu Jul 24 04:54:06 2025
 Response via : Initial Calibration
 Integrator: ChemStation

Volume Inj. : 2 µl
 Signal #1 Phase : ZB-MR1 Signal #2 Phase: ZB-MR2
 Signal #1 Info : 30Mx0.32mmx 0.50µ Signal #2 Info : 30M x 0.32mm x 0.25µm

Compound	RT#1	RT#2	Resp#1	Resp#2	ng/ml	ng/ml

System Monitoring Compounds						
1) SA Tetrachlo...	3.665	3.658	213.9E6	125.8E6	26.304	25.312
2) SA Decachlor...	8.684	8.631	141.0E6	38466251	19.287	21.768

Target Compounds

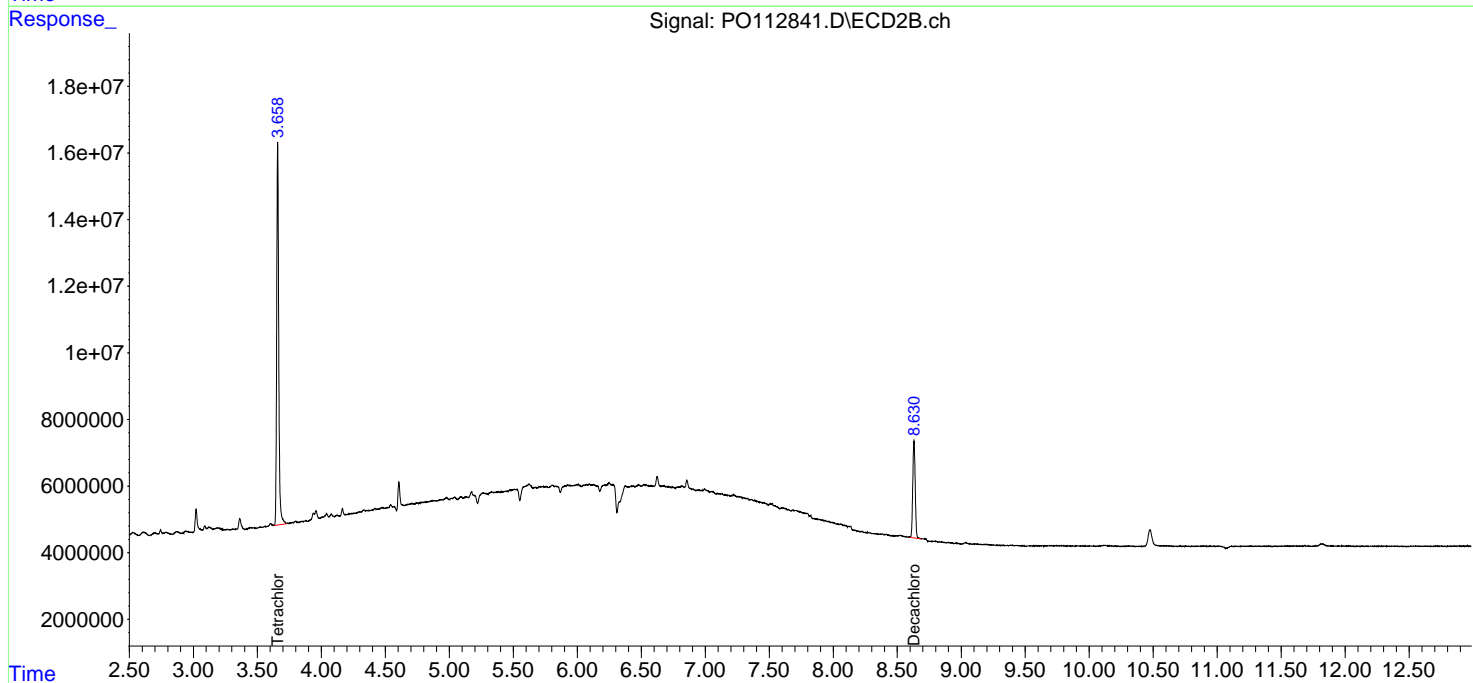
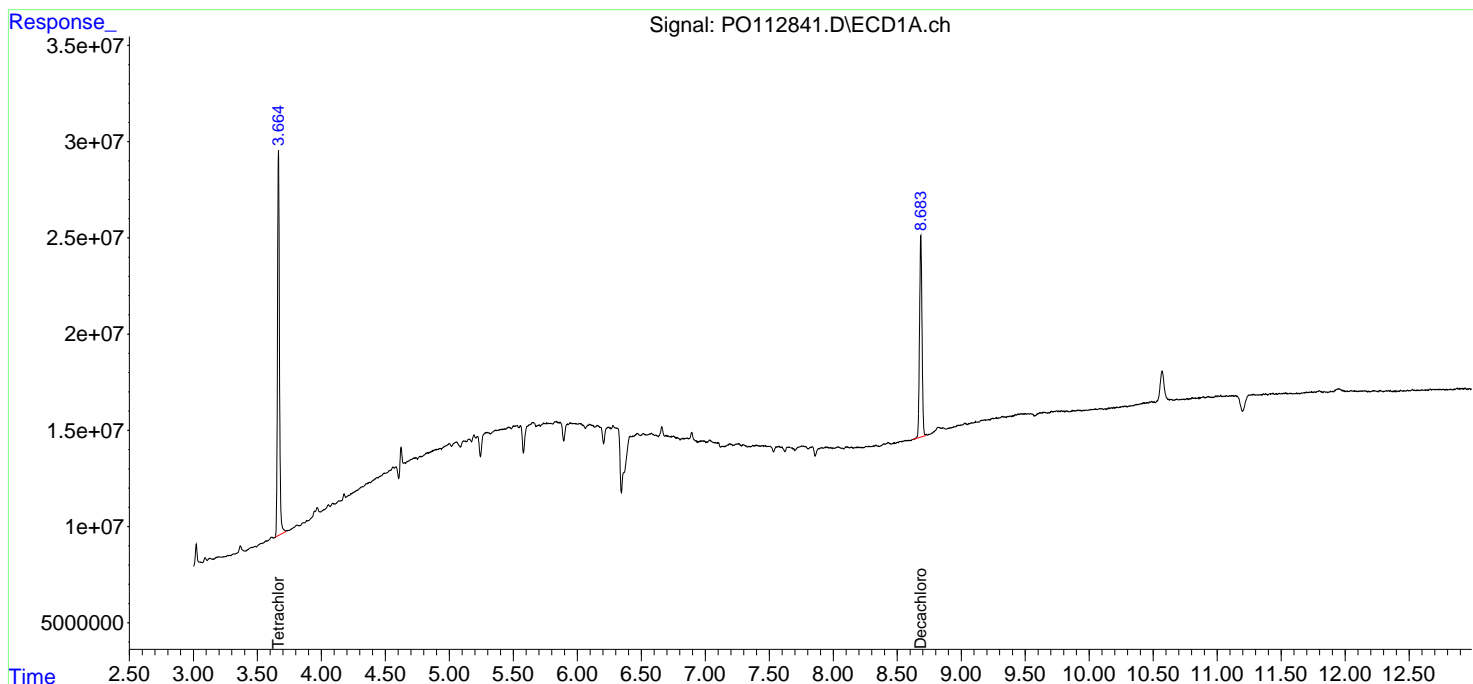
(f)=RT Delta > 1/2 Window (#)=Amounts differ by > 25% (m)=manual int.

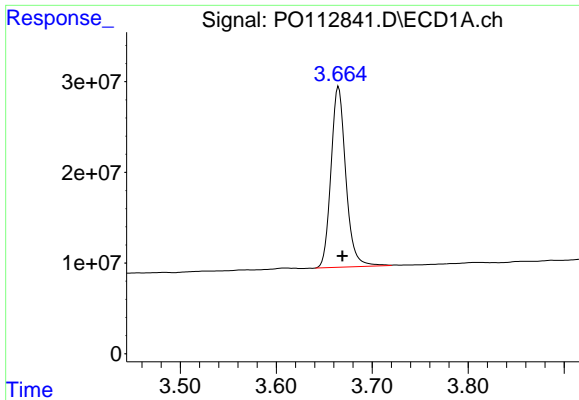
Data Path : Z:\pestpcbsrv\HPCHEM1\ECD_0\Data\PO081125\
 Data File : PO112841.D
 Signal(s) : Signal #1: ECD1A.ch Signal #2: ECD2B.ch
 Acq On : 11 Aug 2025 16:24
 Operator : YP/AJ
 Sample : Q2807-03
 Misc :
 ALS Vial : 14 Sample Multiplier: 1

Instrument :
 ECD_0
 ClientSampleId :
 COMP-6

Integration File signal 1: autoint1.e
 Integration File signal 2: autoint2.e
 Quant Time: Aug 12 02:41:45 2025
 Quant Method : Z:\pestpcbsrv\HPCHEM1\ECD_0\methods\PO072325.M
 Quant Title : GC EXTRACTABLES
 QLast Update : Thu Jul 24 04:54:06 2025
 Response via : Initial Calibration
 Integrator: ChemStation

Volume Inj. : 2 µl
 Signal #1 Phase : ZB-MR1 Signal #2 Phase: ZB-MR2
 Signal #1 Info : 30Mx0.32mmx 0.50µ Signal #2 Info : 30M x 0.32mm x 0.25µm

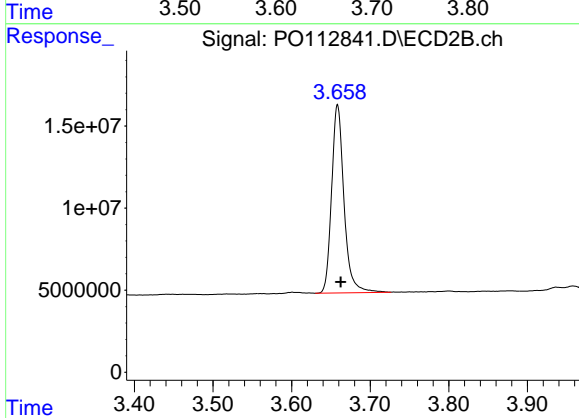




#1 Tetrachloro-m-xylene

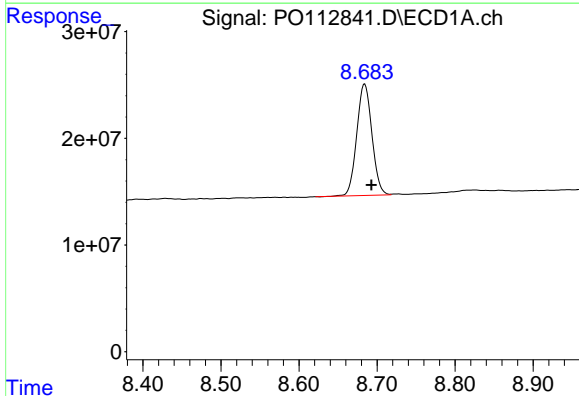
R.T.: 3.665 min
 Delta R.T.: -0.004 min
 Response: 213890306
 Conc: 26.30 ng/ml

Instrument :
 ECD_O
 ClientSampleId :
 COMP-6



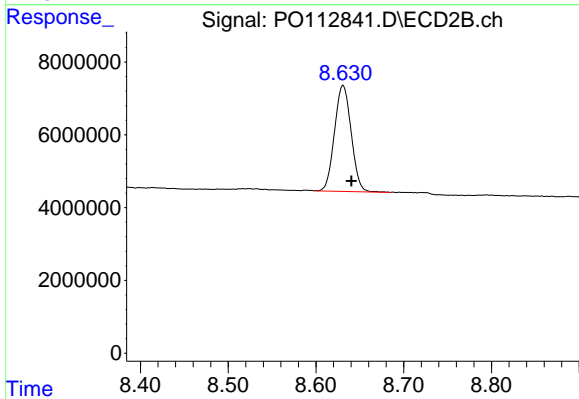
#1 Tetrachloro-m-xylene

R.T.: 3.658 min
 Delta R.T.: -0.004 min
 Response: 125777699
 Conc: 25.31 ng/ml



#2 Decachlorobiphenyl

R.T.: 8.684 min
 Delta R.T.: -0.009 min
 Response: 141021834
 Conc: 19.29 ng/ml



#2 Decachlorobiphenyl

R.T.: 8.631 min
 Delta R.T.: -0.010 min
 Response: 38466251
 Conc: 21.77 ng/ml