

Data Path : Z:\pestpcbsrv\HPCHEM1\ECD_0\Data\P0081125\
 Data File : PO112842.D
 Signal(s) : Signal #1: ECD1A.ch Signal #2: ECD2B.ch
 Acq On : 11 Aug 2025 16:42
 Operator : YP/AJ
 Sample : Q2808-01
 Misc :
 ALS Vial : 15 Sample Multiplier: 1

Instrument :
 ECD_0
 ClientSampleId :
 TP-7

Manual Integrations
APPROVED

Reviewed By :Yogesh Patel 08/12/2025
 Supervised By :mohammad ahmed 08/13/2025

Integration File signal 1: autoint1.e
 Integration File signal 2: autoint2.e
 Quant Time: Aug 12 04:12:12 2025
 Quant Method : Z:\pestpcbsrv\HPCHEM1\ECD_0\methods\P0072325.M
 Quant Title : GC EXTRACTABLES
 QLast Update : Thu Jul 24 04:54:06 2025
 Response via : Initial Calibration
 Integrator: ChemStation

Volume Inj. : 2 µl
 Signal #1 Phase : ZB-MR1 Signal #2 Phase: ZB-MR2
 Signal #1 Info : 30Mx0.32mmx 0.50µ Signal #2 Info : 30M x 0.32mm x 0.25µm

Compound	RT#1	RT#2	Resp#1	Resp#2	ng/ml	ng/ml

System Monitoring Compounds						
1) SA Tetrachlo...	3.664	3.658	114.7E6	77304807	14.101m	15.557
2) SA Decachlor...	8.684	8.631	96434555	27014777	13.189	15.288
Target Compounds						
16) L4 AR-1242-1	4.748	4.732	607.2E6	428.8E6	2452.488m	2706.904
17) L4 AR-1242-2	4.767	4.751	991.0E6	631.0E6	2679.984m	2700.324
18) L4 AR-1242-3	4.824	4.925	545.3E6	263.7E6	2304.165m	2175.538
19) L4 AR-1242-4	4.943	5.010	395.4E6	229.5E6	2035.143	1870.075
20) L4 AR-1242-5	5.595	5.531	414.2E6	327.3E6	1936.366	2033.579
26) L6 AR-1254-1	5.555	5.531	515.5E6	327.3E6	938.988	996.126
27) L6 AR-1254-2	5.703	5.677	545.0E6	326.4E6	1121.615	1127.630
28) L6 AR-1254-3	6.106	6.077	766.1E6	461.8E6	1029.317	1080.283
29) L6 AR-1254-4	6.336	6.305	533.4E6	285.5E6	970.324	1045.885
30) L6 AR-1254-5	6.754	6.721	875.3E6	452.8E6	1236.612	1355.650

(f)=RT Delta > 1/2 Window (#)=Amounts differ by > 25% (m)=manual int.

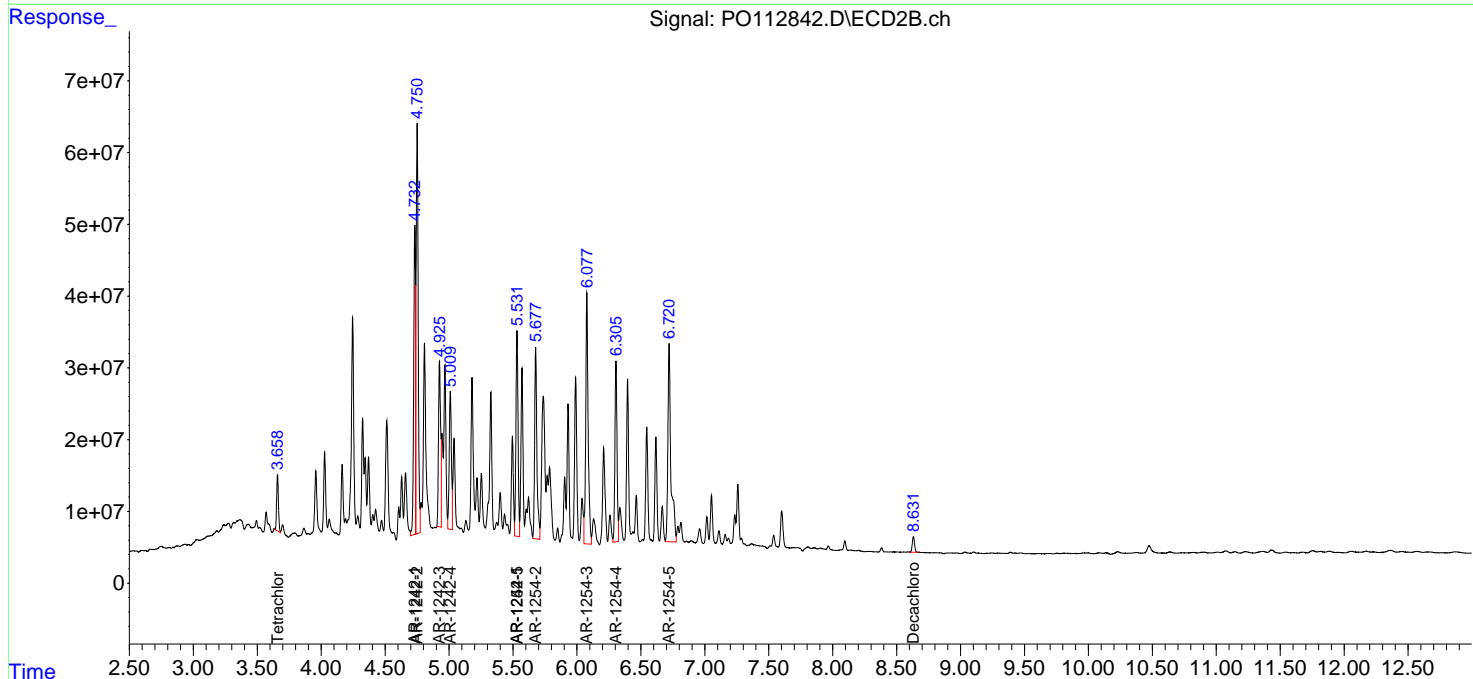
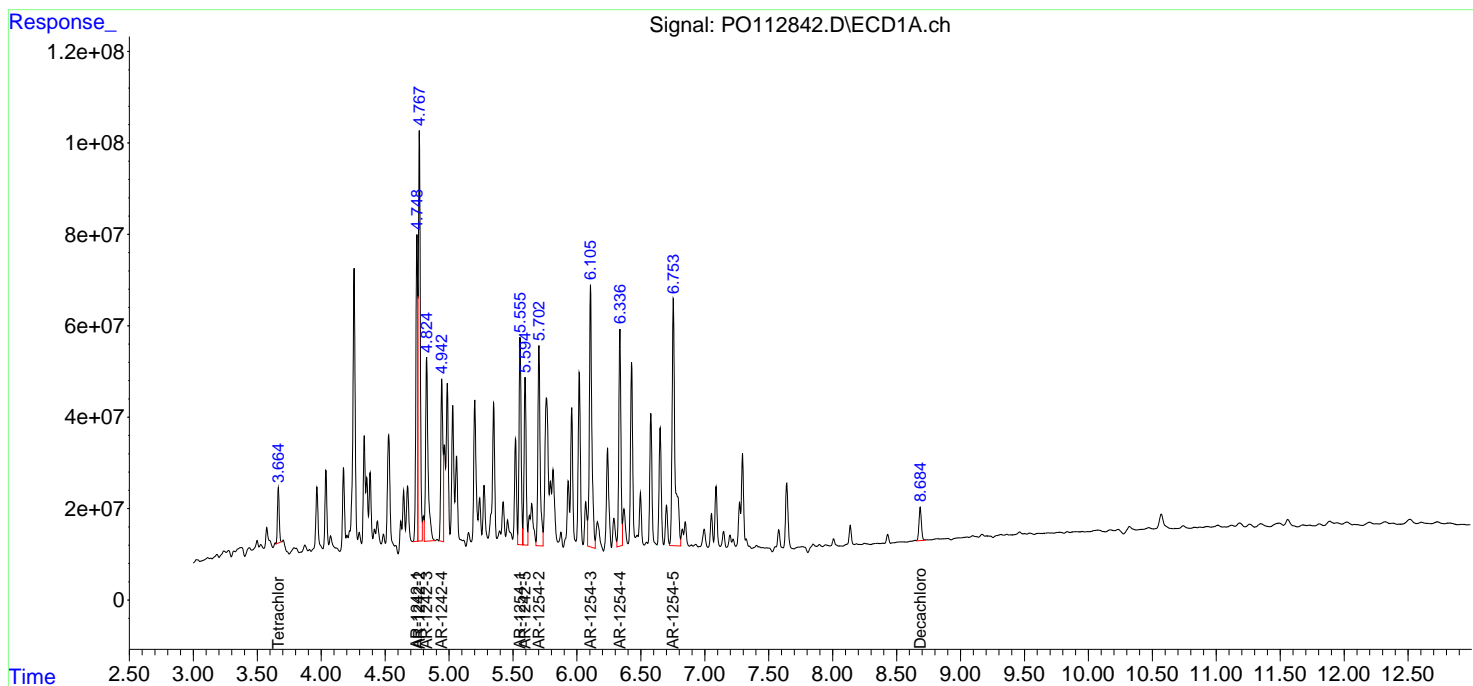
Data Path : Z:\pestpcbsrv\HPCHEM1\ECD_O\Data\PO081125\
 Data File : PO112842.D
 Signal(s) : Signal #1: ECD1A.ch Signal #2: ECD2B.ch
 Acq On : 11 Aug 2025 16:42
 Operator : YP/AJ
 Sample : Q2808-01
 Misc :
 ALS Vial : 15 Sample Multiplier: 1

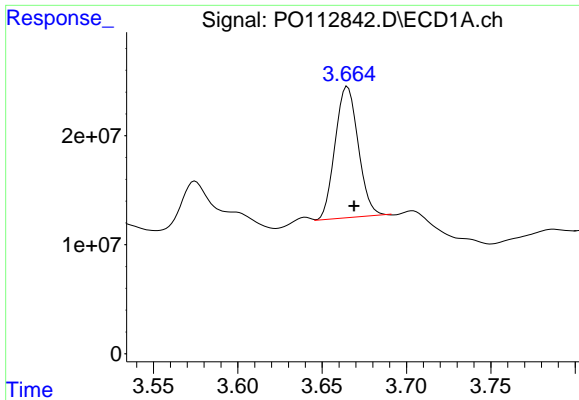
Instrument :
 ECD_O
ClientSampleId :
 TP-7

Manual Integrations
APPROVED
 Reviewed By :Yogesh Patel 08/12/2025
 Supervised By :mohammad ahmed 08/13/2025

Integration File signal 1: autoint1.e
 Integration File signal 2: autoint2.e
 Quant Time: Aug 12 04:12:12 2025
 Quant Method : Z:\pestpcbsrv\HPCHEM1\ECD_O\methods\PO072325.M
 Quant Title : GC EXTRACTABLES
 QLast Update : Thu Jul 24 04:54:06 2025
 Response via : Initial Calibration
 Integrator: ChemStation

Volume Inj. : 2 µl
 Signal #1 Phase : ZB-MR1 Signal #2 Phase: ZB-MR2
 Signal #1 Info : 30Mx0.32mmx 0.50µ Signal #2 Info : 30M x 0.32mm x 0.25µm



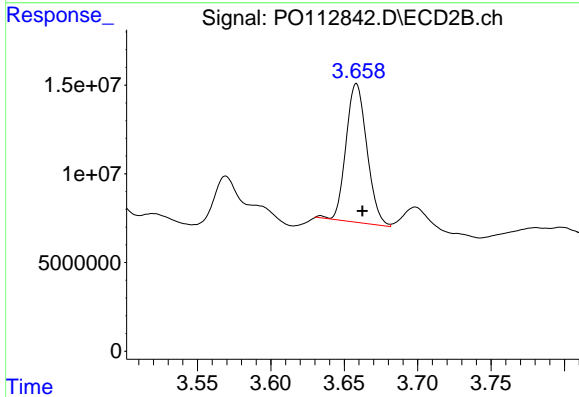


#1 Tetrachloro-m-xylene
 R.T.: 3.664 min
 Delta R.T.: -0.005 min
 Response: 114664443
 Conc: 14.10 ng/ml

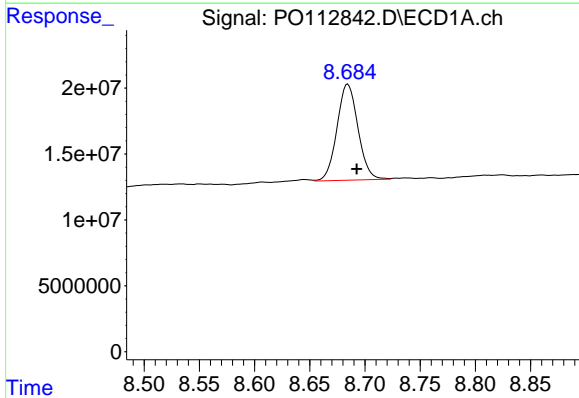
Instrument :
 ECD_O
 ClientSampleId :
 TP-7

Manual Integrations
 APPROVED

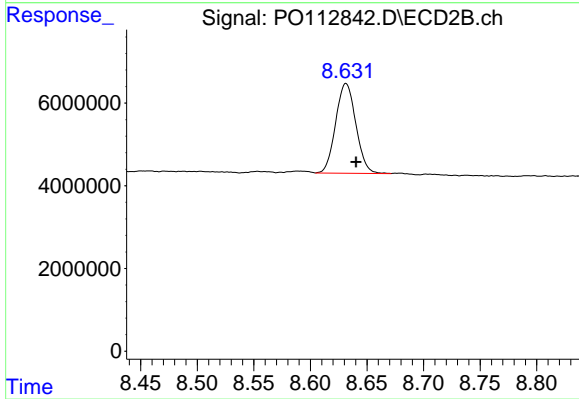
Reviewed By :Yogesh Patel 08/12/2025
 Supervised By :mohammad ahmed 08/13/2025



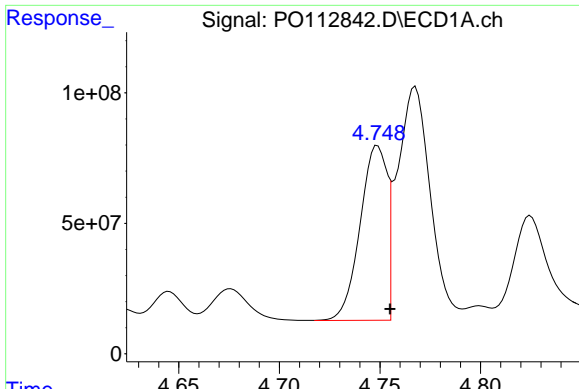
#1 Tetrachloro-m-xylene
 R.T.: 3.658 min
 Delta R.T.: -0.004 min
 Response: 77304807
 Conc: 15.56 ng/ml



#2 Decachlorobiphenyl
 R.T.: 8.684 min
 Delta R.T.: -0.008 min
 Response: 96434555
 Conc: 13.19 ng/ml



#2 Decachlorobiphenyl
 R.T.: 8.631 min
 Delta R.T.: -0.009 min
 Response: 27014777
 Conc: 15.29 ng/ml

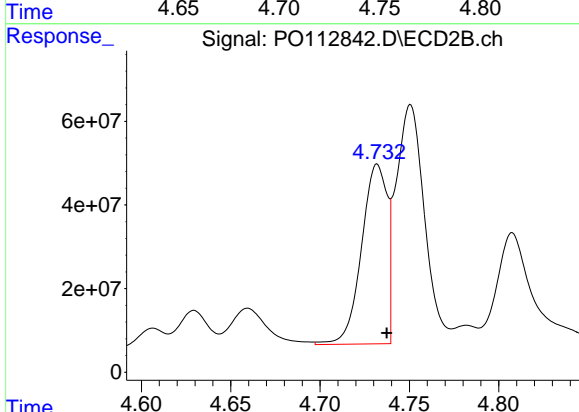


#16 AR-1242-1

R.T.: 4.748 min
 Delta R.T.: -0.007 min
 Response: 607216483
 Conc: 2452.49 ng/m

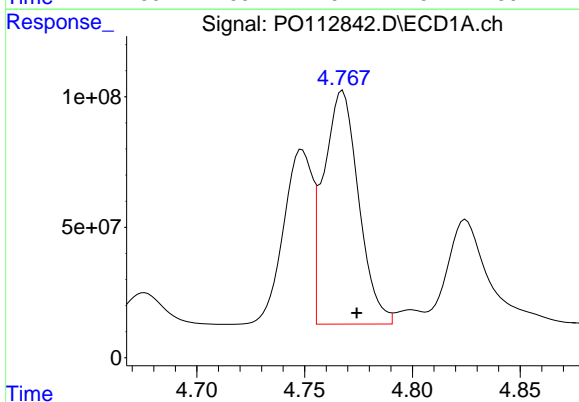
Instrument :
 ECD_O
 ClientSampleId :
 TP-7

Manual Integrations
APPROVED
 Reviewed By :Yogesh Patel 08/12/2025
 Supervised By :mohammad ahmed 08/13/2025



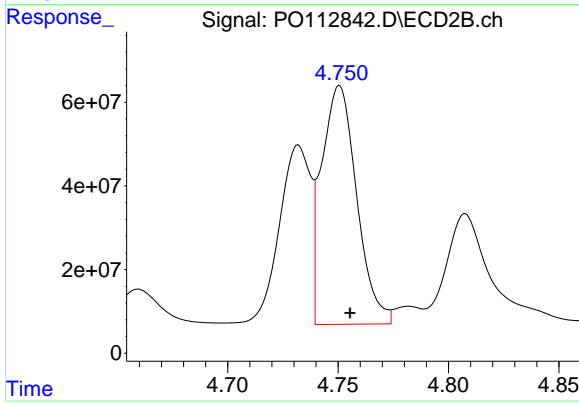
#16 AR-1242-1

R.T.: 4.732 min
 Delta R.T.: -0.005 min
 Response: 428757451
 Conc: 2706.90 ng/ml



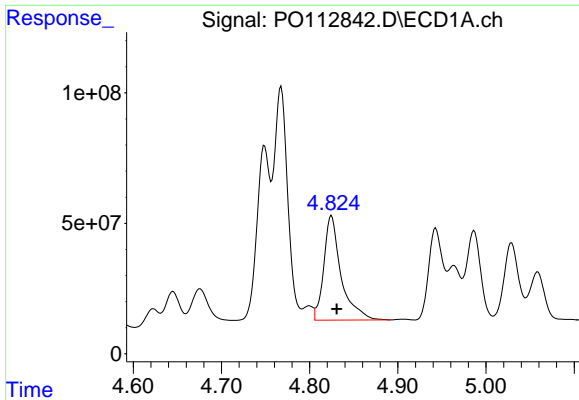
#17 AR-1242-2

R.T.: 4.767 min
 Delta R.T.: -0.007 min
 Response: 991040878
 Conc: 2679.98 ng/ml m



#17 AR-1242-2

R.T.: 4.751 min
 Delta R.T.: -0.005 min
 Response: 630975154
 Conc: 2700.32 ng/ml



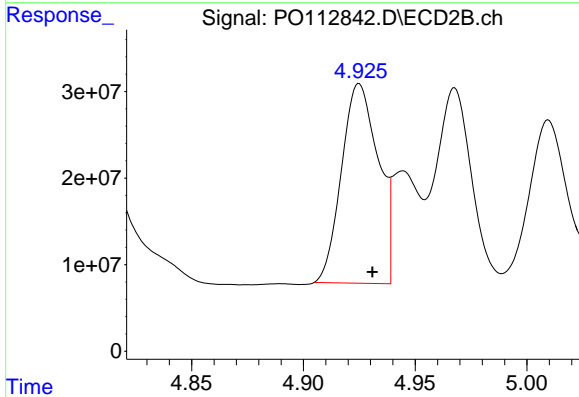
#18 AR-1242-3

R.T.: 4.824 min
 Delta R.T.: -0.007 min
 Response: 545298610
 Conc: 2304.16 ng/ml

Instrument :
 ECD_O
 ClientSampleId :
 TP-7

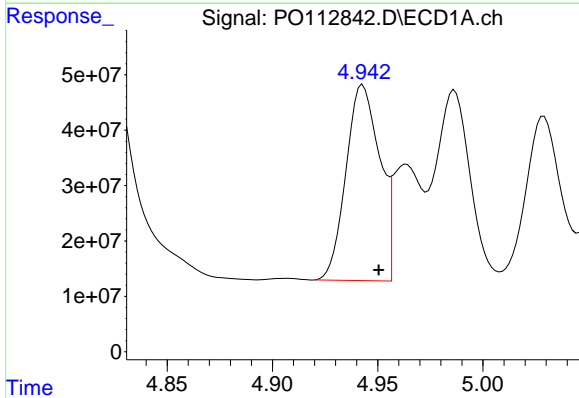
Manual Integrations
 APPROVED

Reviewed By :Yogesh Patel 08/12/2025
 Supervised By :mohammad ahmed 08/13/2025



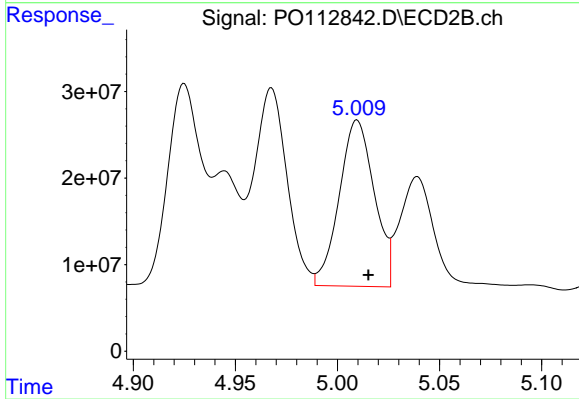
#18 AR-1242-3

R.T.: 4.925 min
 Delta R.T.: -0.006 min
 Response: 263651517
 Conc: 2175.54 ng/ml



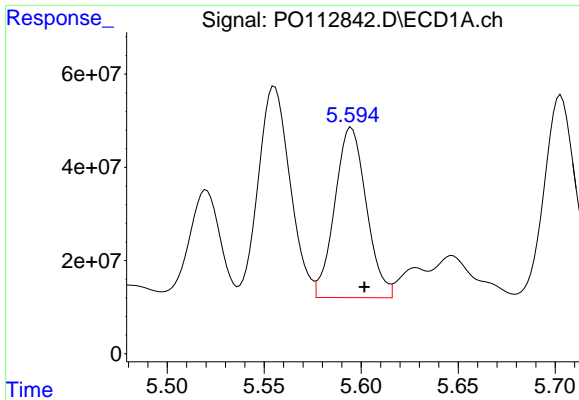
#19 AR-1242-4

R.T.: 4.943 min
 Delta R.T.: -0.008 min
 Response: 395384748
 Conc: 2035.14 ng/ml



#19 AR-1242-4

R.T.: 5.010 min
 Delta R.T.: -0.006 min
 Response: 229531794
 Conc: 1870.07 ng/ml



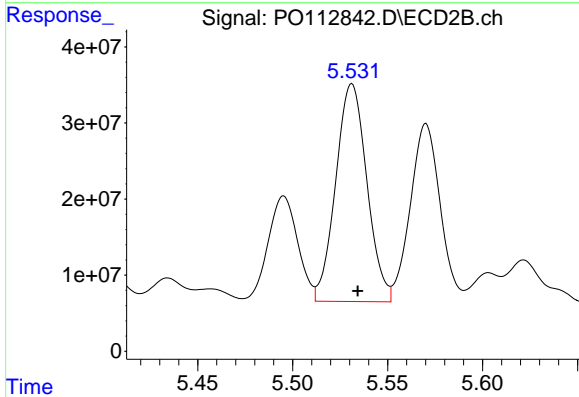
#20 AR-1242-5

R.T.: 5.595 min
 Delta R.T.: -0.007 min
 Response: 414218823
 Conc: 1936.37 ng/ml

Instrument :
 ECD_O
 ClientSampleId :
 TP-7

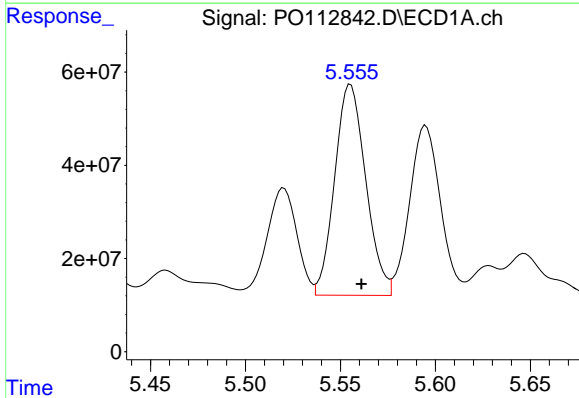
Manual Integrations
 APPROVED

Reviewed By :Yogesh Patel 08/12/2025
 Supervised By :mohammad ahmed 08/13/2025



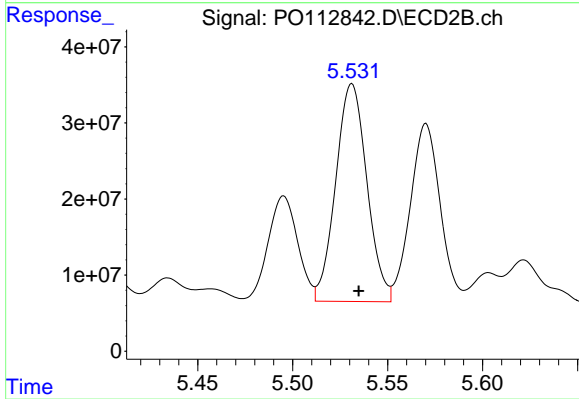
#20 AR-1242-5

R.T.: 5.531 min
 Delta R.T.: -0.003 min
 Response: 327347890
 Conc: 2033.58 ng/ml



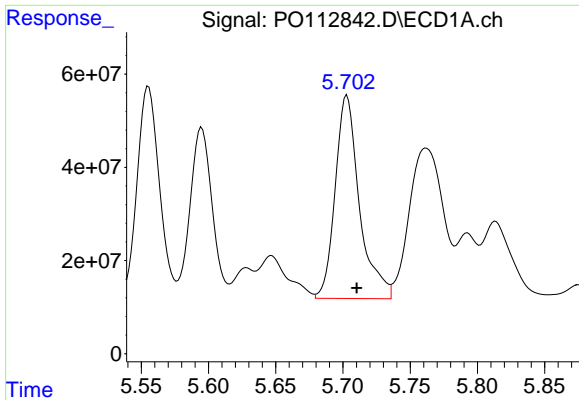
#26 AR-1254-1

R.T.: 5.555 min
 Delta R.T.: -0.006 min
 Response: 515465792
 Conc: 938.99 ng/ml



#26 AR-1254-1

R.T.: 5.531 min
 Delta R.T.: -0.004 min
 Response: 327347890
 Conc: 996.13 ng/ml



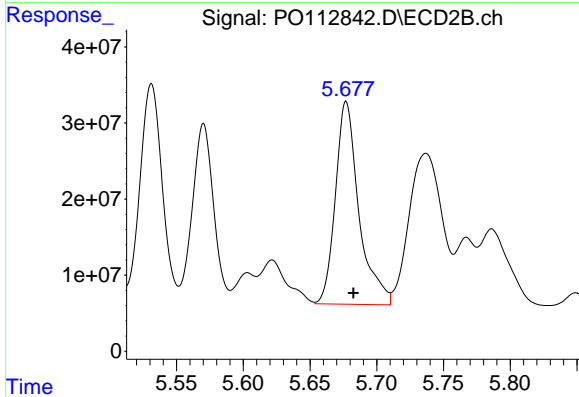
#27 AR-1254-2

R.T.: 5.703 min
 Delta R.T.: -0.007 min
 Response: 545013987
 Conc: 1121.62 ng/ml

Instrument :
 ECD_O
 ClientSampleId :
 TP-7

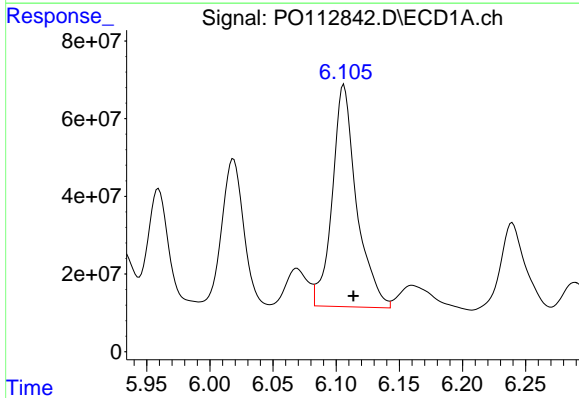
Manual Integrations
 APPROVED

Reviewed By :Yogesh Patel 08/12/2025
 Supervised By :mohammad ahmed 08/13/2025



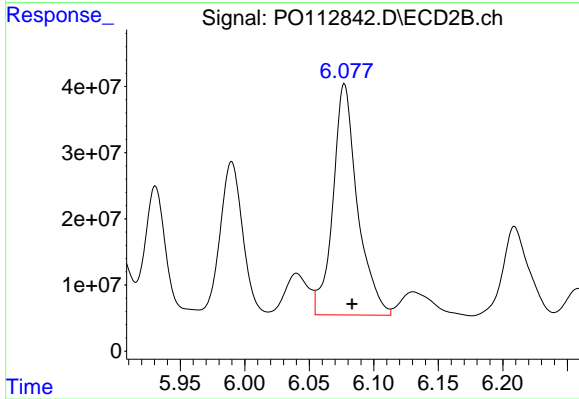
#27 AR-1254-2

R.T.: 5.677 min
 Delta R.T.: -0.005 min
 Response: 326438406
 Conc: 1127.63 ng/ml



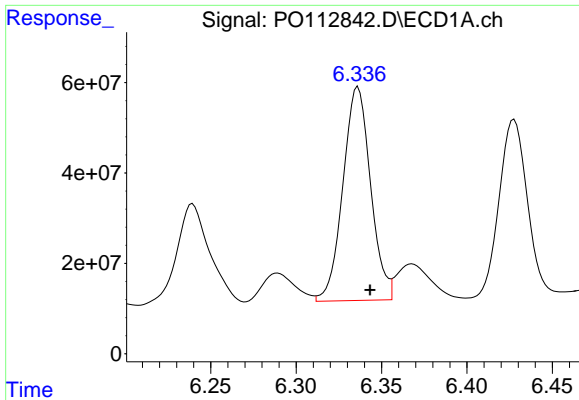
#28 AR-1254-3

R.T.: 6.106 min
 Delta R.T.: -0.008 min
 Response: 766106747
 Conc: 1029.32 ng/ml



#28 AR-1254-3

R.T.: 6.077 min
 Delta R.T.: -0.006 min
 Response: 461779380
 Conc: 1080.28 ng/ml



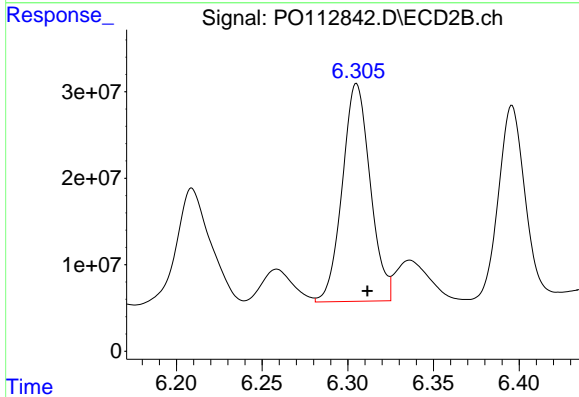
#29 AR-1254-4

R.T.: 6.336 min
 Delta R.T.: -0.007 min
 Response: 533390944
 Conc: 970.32 ng/ml

Instrument :
 ECD_O
 ClientSampleId :
 TP-7

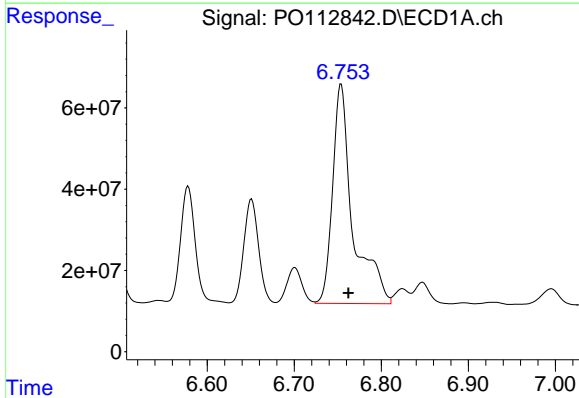
Manual Integrations
 APPROVED

Reviewed By :Yogesh Patel 08/12/2025
 Supervised By :mohammad ahmed 08/13/2025



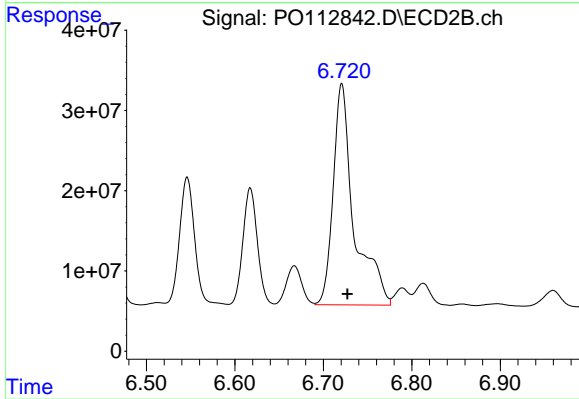
#29 AR-1254-4

R.T.: 6.305 min
 Delta R.T.: -0.006 min
 Response: 285487910
 Conc: 1045.88 ng/ml



#30 AR-1254-5

R.T.: 6.754 min
 Delta R.T.: -0.008 min
 Response: 875303731
 Conc: 1236.61 ng/ml



#30 AR-1254-5

R.T.: 6.721 min
 Delta R.T.: -0.006 min
 Response: 452813847
 Conc: 1355.65 ng/ml