

Data Path : Z:\pestpcbsrv\HPCHEM1\ECD_0\Data\P0081125\
 Data File : P0112843.D
 Signal(s) : Signal #1: ECD1A.ch Signal #2: ECD2B.ch
 Acq On : 11 Aug 2025 17:00
 Operator : YP/AJ
 Sample : Q2809-01
 Misc :
 ALS Vial : 16 Sample Multiplier: 1

Instrument :
 ECD_0
 ClientSampleId :
 OR-03-08082025

Integration File signal 1: autoint1.e
 Integration File signal 2: autoint2.e
 Quant Time: Aug 12 04:15:36 2025
 Quant Method : Z:\pestpcbsrv\HPCHEM1\ECD_0\methods\P0072325.M
 Quant Title : GC EXTRACTABLES
 QLast Update : Thu Jul 24 04:54:06 2025
 Response via : Initial Calibration
 Integrator: ChemStation

Volume Inj. : 2 µl
 Signal #1 Phase : ZB-MR1 Signal #2 Phase: ZB-MR2
 Signal #1 Info : 30Mx0.32mmx 0.50µ Signal #2 Info : 30M x 0.32mm x 0.25µm

Compound	RT#1	RT#2	Resp#1	Resp#2	ng/ml	ng/ml

System Monitoring Compounds						
1) SA Tetrachlo...	3.667	3.659	190.3E6	107.8E6	23.407	21.684
2) SA Decachlor...	8.688	8.633	97310596	30608884	13.309	17.321 #

Target Compounds

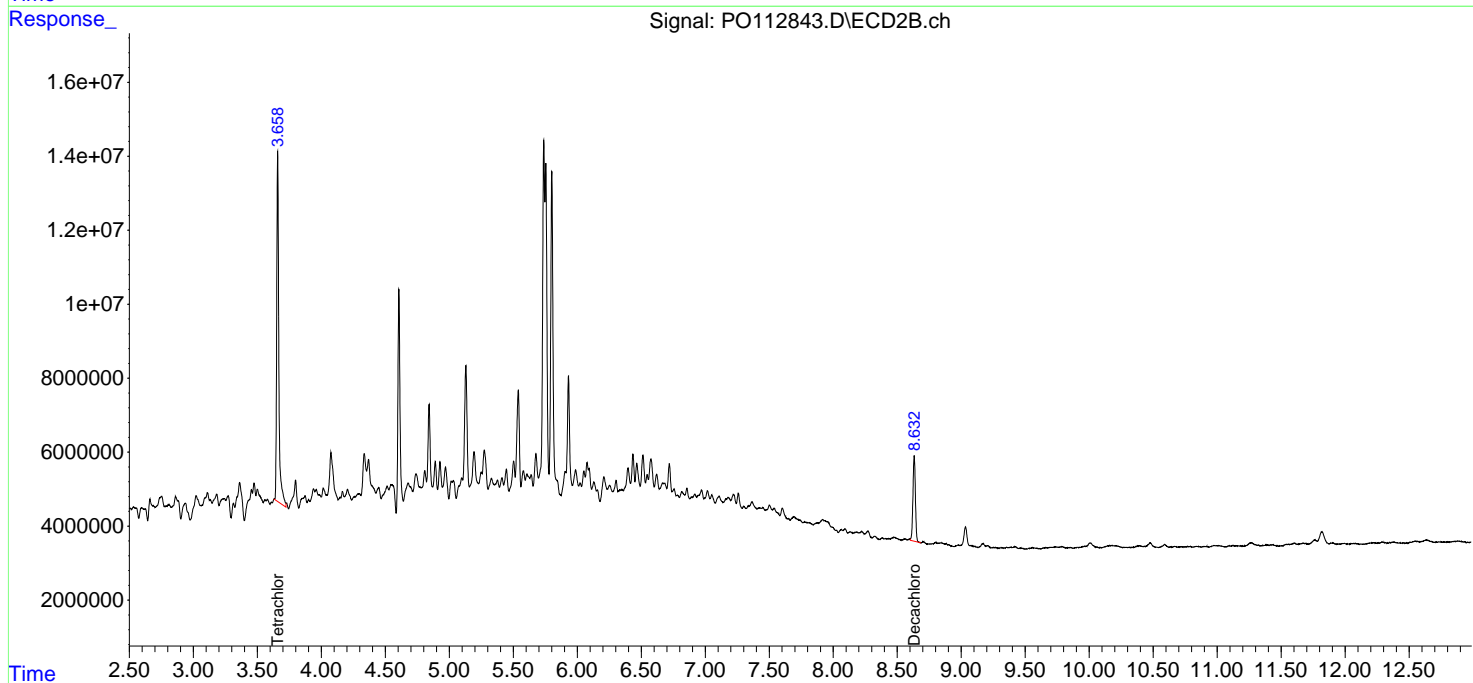
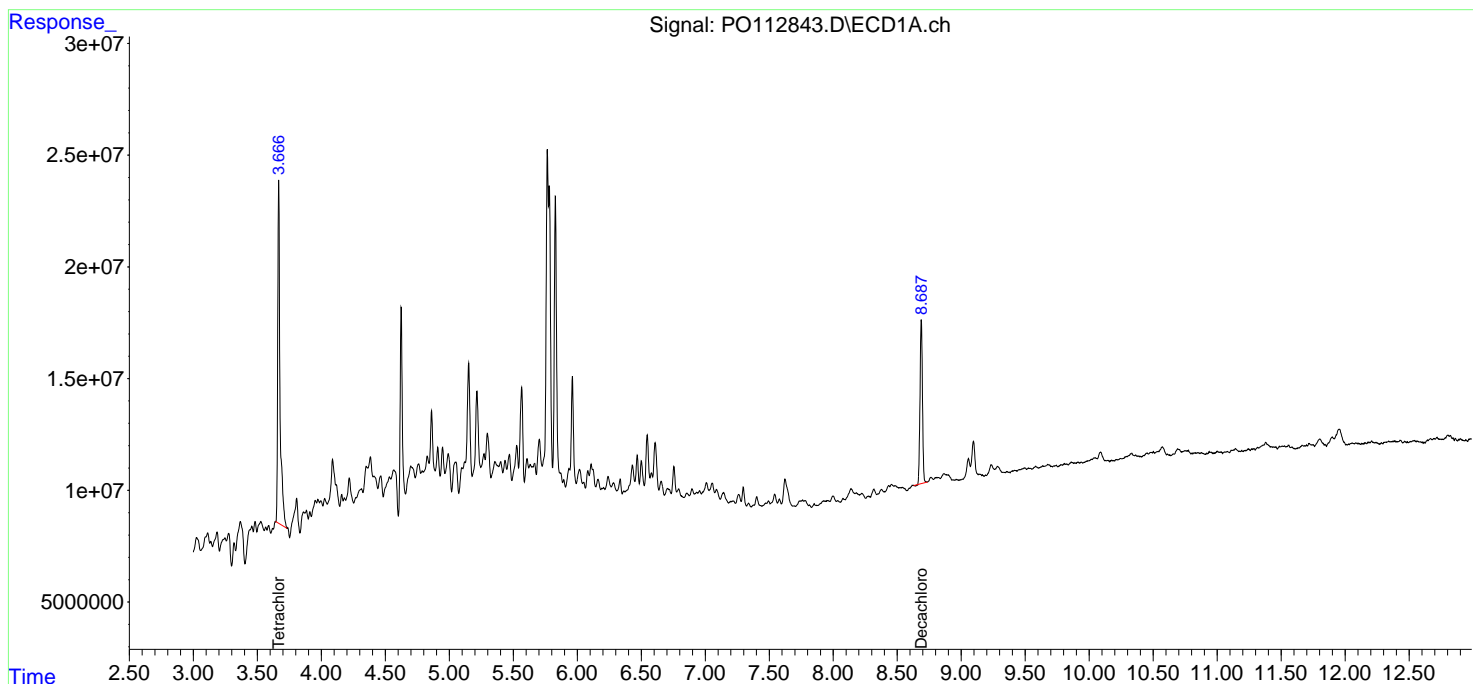
(f)=RT Delta > 1/2 Window (#)=Amounts differ by > 25% (m)=manual int.

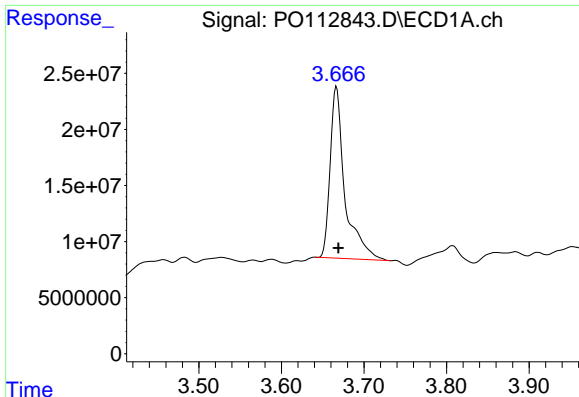
Data Path : Z:\pestpcbsrv\HPCHEM1\ECD_O\Data\PO081125\
 Data File : PO112843.D
 Signal(s) : Signal #1: ECD1A.ch Signal #2: ECD2B.ch
 Acq On : 11 Aug 2025 17:00
 Operator : YP/AJ
 Sample : Q2809-01
 Misc :
 ALS Vial : 16 Sample Multiplier: 1

Instrument :
 ECD_O
 ClientSampleId :
 OR-03-08082025

Integration File signal 1: autoint1.e
 Integration File signal 2: autoint2.e
 Quant Time: Aug 12 04:15:36 2025
 Quant Method : Z:\pestpcbsrv\HPCHEM1\ECD_O\methods\PO072325.M
 Quant Title : GC EXTRACTABLES
 QLast Update : Thu Jul 24 04:54:06 2025
 Response via : Initial Calibration
 Integrator: ChemStation

Volume Inj. : 2 µl
 Signal #1 Phase : ZB-MR1 Signal #2 Phase: ZB-MR2
 Signal #1 Info : 30Mx0.32mmx 0.50µ Signal #2 Info : 30M x 0.32mm x 0.25µm

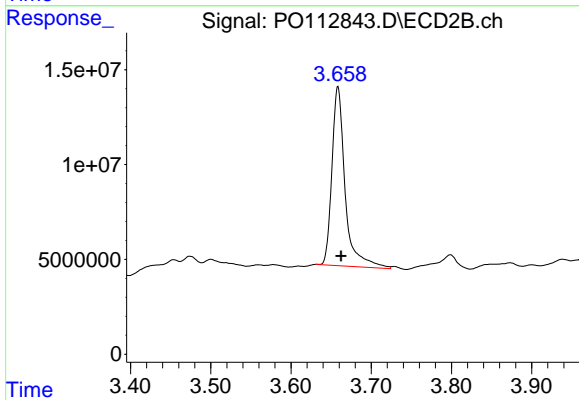




#1 Tetrachloro-m-xylene

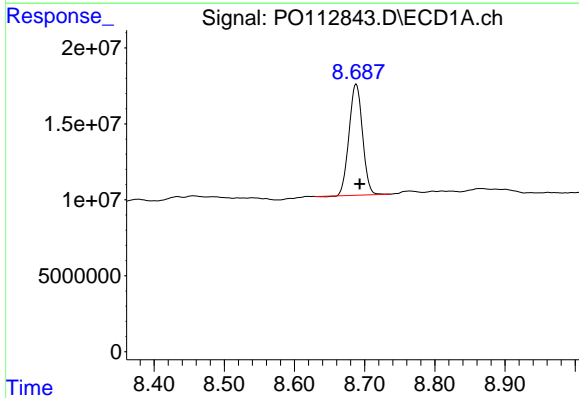
R.T.: 3.667 min
 Delta R.T.: -0.002 min
 Response: 190335559
 Conc: 23.41 ng/ml

Instrument :
 ECD_O
 ClientSampleId :
 OR-03-08082025



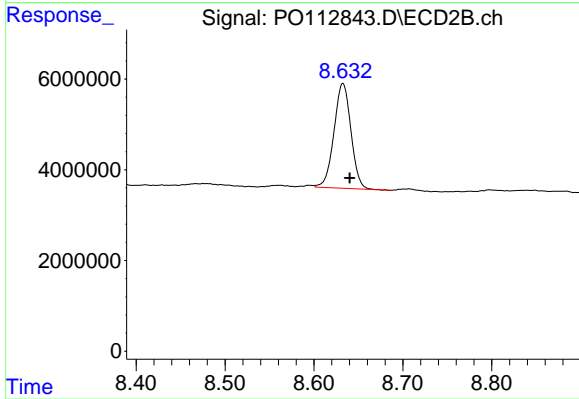
#1 Tetrachloro-m-xylene

R.T.: 3.659 min
 Delta R.T.: -0.004 min
 Response: 107751047
 Conc: 21.68 ng/ml



#2 Decachlorobiphenyl

R.T.: 8.688 min
 Delta R.T.: -0.005 min
 Response: 97310596
 Conc: 13.31 ng/ml



#2 Decachlorobiphenyl

R.T.: 8.633 min
 Delta R.T.: -0.008 min
 Response: 30608884
 Conc: 17.32 ng/ml