

Data Path : Z:\pestpcbsrv\HPCHEM1\ECD\_0\Data\P0081125\  
 Data File : P0112845.D  
 Signal(s) : Signal #1: ECD1A.ch Signal #2: ECD2B.ch  
 Acq On : 11 Aug 2025 19:08  
 Operator : YP/AJ  
 Sample : AR1242CCC500  
 Misc :  
 ALS Vial : 4 Sample Multiplier: 1

**Instrument :**  
 ECD\_0  
**ClientSampleId :**  
 AR1242CCC500

**Manual Integrations**  
**APPROVED**  
 Reviewed By :Yogesh Patel 08/12/2025  
 Supervised By :mohammad ahmed 08/13/2025

Integration File signal 1: autoint1.e  
 Integration File signal 2: autoint2.e  
 Quant Time: Aug 12 02:42:38 2025  
 Quant Method : Z:\pestpcbsrv\HPCHEM1\ECD\_0\methods\P0072325.M  
 Quant Title : GC EXTRACTABLES  
 QLast Update : Thu Jul 24 04:54:06 2025  
 Response via : Initial Calibration  
 Integrator: ChemStation

Volume Inj. : 2 µl  
 Signal #1 Phase : ZB-MR1 Signal #2 Phase: ZB-MR2  
 Signal #1 Info : 30Mx0.32mmx 0.50µ Signal #2 Info : 30M x 0.32mm x 0.25µm

Compound	RT#1	RT#2	Resp#1	Resp#2	ng/ml	ng/ml
-----						
System Monitoring Compounds						
1) SA Tetrachlo...	3.666	3.658	476.0E6	276.9E6	58.543	55.724
2) SA Decachlor...	8.687	8.631	309.4E6	87734907	42.317	49.649
Target Compounds						
16) L4 AR-1242-1	4.752	4.732	128.3E6	78324042	518.381	494.489
17) L4 AR-1242-2	4.770	4.751	196.1E6	117.1E6	530.403	501.215
18) L4 AR-1242-3	4.827	4.926	123.0E6	59568674	519.770	491.535
19) L4 AR-1242-4	4.946	5.010	99557567	59990100	512.447	488.760
20) L4 AR-1242-5	5.596	5.529	95127309	79857234	444.696m	496.096
-----						

(f)=RT Delta > 1/2 Window (#)=Amounts differ by > 25% (m)=manual int.

Data Path : Z:\pestpcbsrv\HPCHEM1\ECD\_O\Data\PO081125\  
 Data File : PO112845.D  
 Signal(s) : Signal #1: ECD1A.ch Signal #2: ECD2B.ch  
 Acq On : 11 Aug 2025 19:08  
 Operator : YP/AJ  
 Sample : AR1242CCC500  
 Misc :  
 ALS Vial : 4 Sample Multiplier: 1

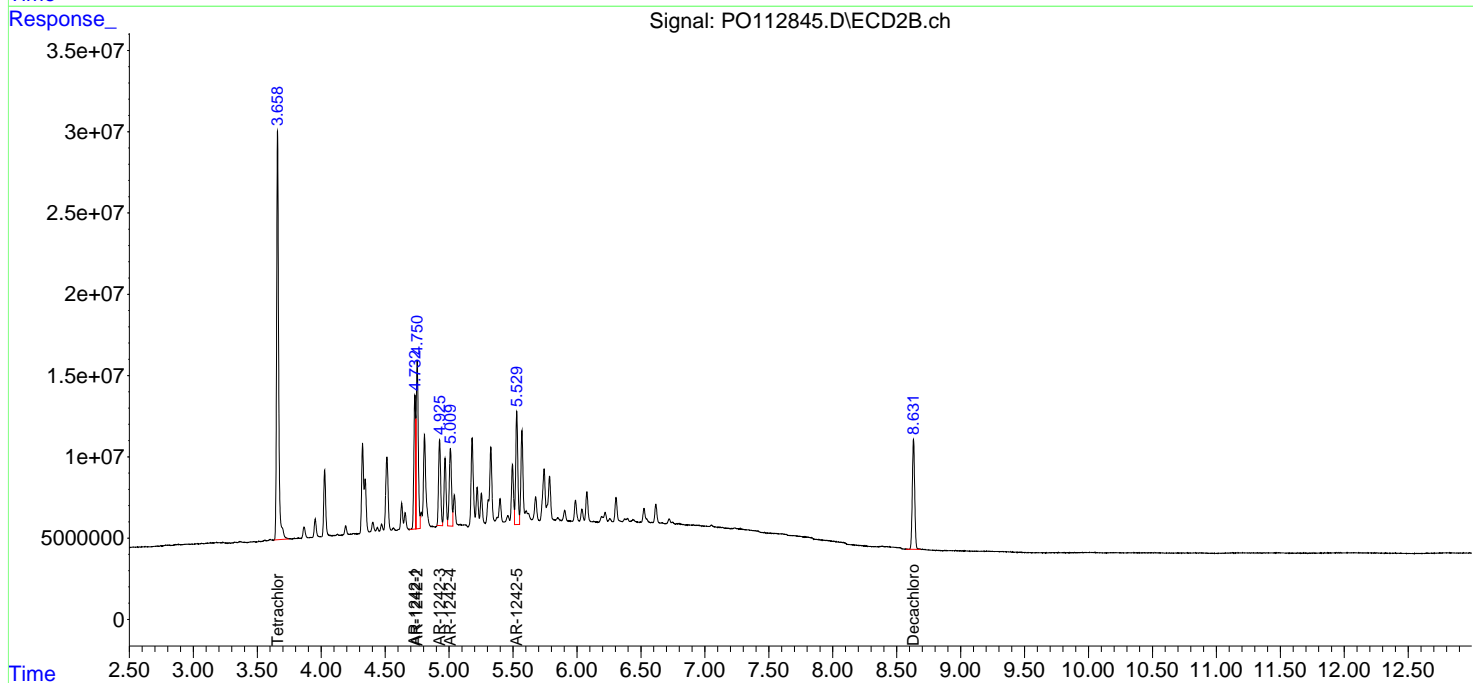
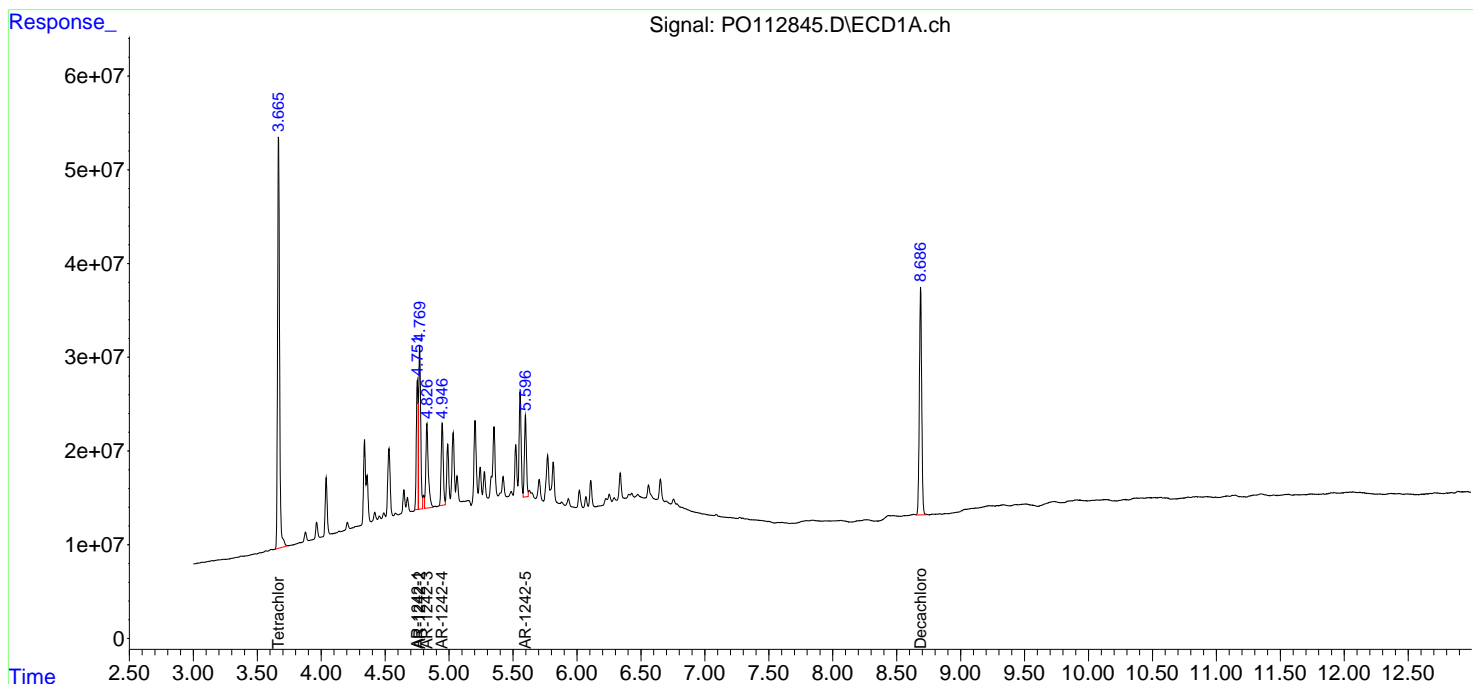
Instrument :  
 ECD\_O  
 ClientSampleId :  
 AR1242CCC500

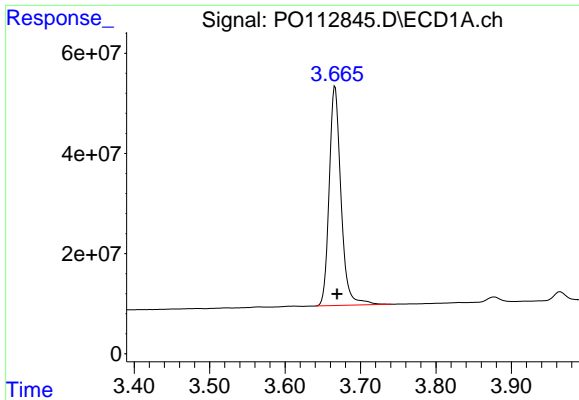
Manual Integrations  
**APPROVED**

Reviewed By :Yogesh Patel 08/12/2025  
 Supervised By :mohammad ahmed 08/13/2025

Integration File signal 1: autoint1.e  
 Integration File signal 2: autoint2.e  
 Quant Time: Aug 12 02:42:38 2025  
 Quant Method : Z:\pestpcbsrv\HPCHEM1\ECD\_O\methods\PO072325.M  
 Quant Title : GC EXTRACTABLES  
 QLast Update : Thu Jul 24 04:54:06 2025  
 Response via : Initial Calibration  
 Integrator: ChemStation

Volume Inj. : 2 µl  
 Signal #1 Phase : ZB-MR1 Signal #2 Phase: ZB-MR2  
 Signal #1 Info : 30Mx0.32mmx 0.50µ Signal #2 Info : 30M x 0.32mm x 0.25µm





#1 Tetrachloro-m-xylene

R.T.: 3.666 min  
 Delta R.T.: -0.003 min  
 Response: 476049996  
 Conc: 58.54 ng/ml

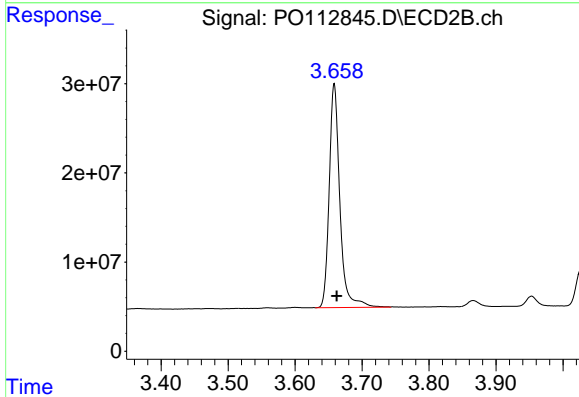
Instrument :

ECD\_O

ClientSampleId :  
 AR1242CCC500

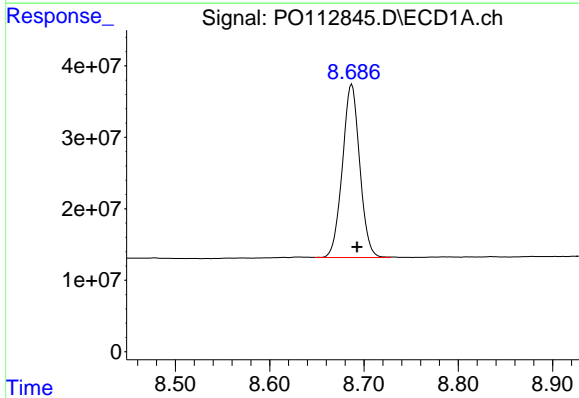
Manual Integrations  
 APPROVED

Reviewed By :Yogesh Patel 08/12/2025  
 Supervised By :mohammad ahmed 08/13/2025



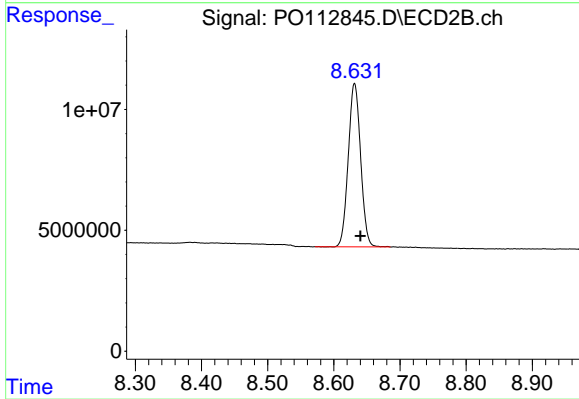
#1 Tetrachloro-m-xylene

R.T.: 3.658 min  
 Delta R.T.: -0.004 min  
 Response: 276902267  
 Conc: 55.72 ng/ml



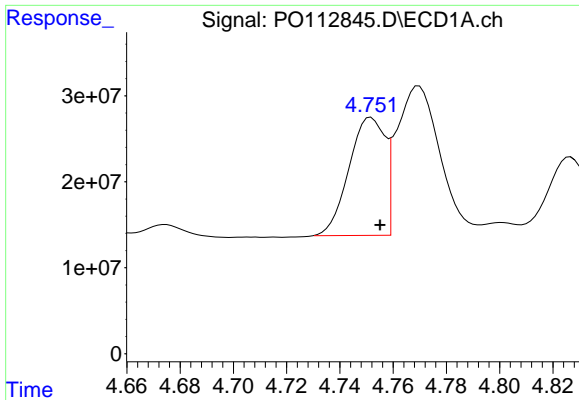
#2 Decachlorobiphenyl

R.T.: 8.687 min  
 Delta R.T.: -0.006 min  
 Response: 309413403  
 Conc: 42.32 ng/ml



#2 Decachlorobiphenyl

R.T.: 8.631 min  
 Delta R.T.: -0.009 min  
 Response: 87734907  
 Conc: 49.65 ng/ml



#16 AR-1242-1

R.T.: 4.752 min  
 Delta R.T.: -0.003 min  
 Response: 128346939  
 Conc: 518.38 ng/ml

Instrument :

ECD\_O

ClientSampleId :

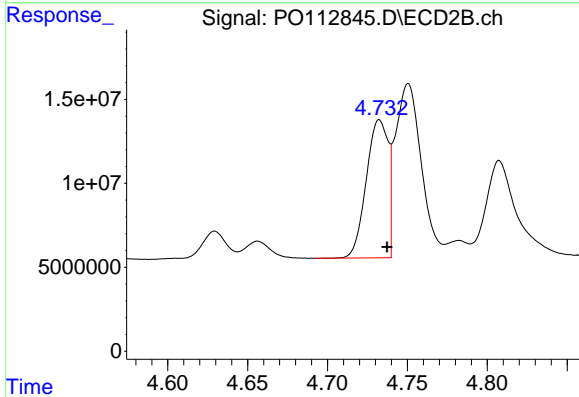
AR1242CCC500

Manual Integrations

APPROVED

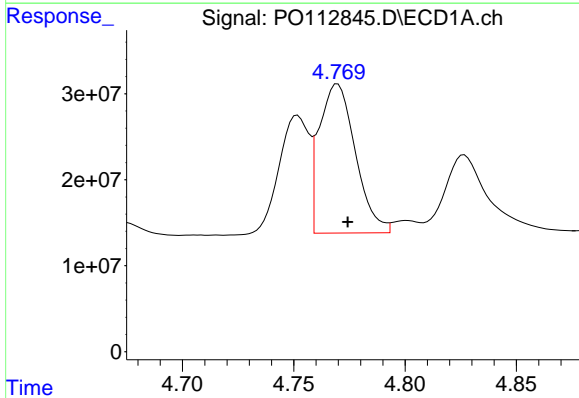
Reviewed By :Yogesh Patel 08/12/2025

Supervised By :mohammad ahmed 08/13/2025



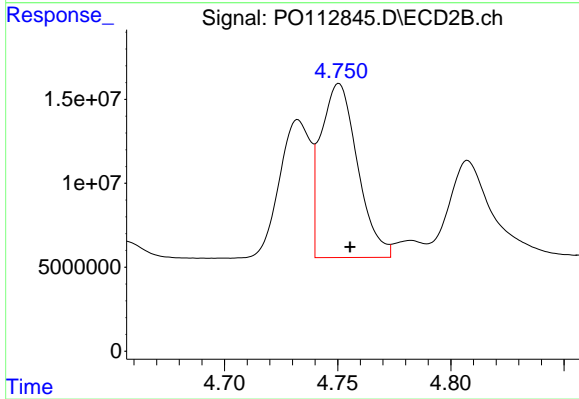
#16 AR-1242-1

R.T.: 4.732 min  
 Delta R.T.: -0.005 min  
 Response: 78324042  
 Conc: 494.49 ng/ml



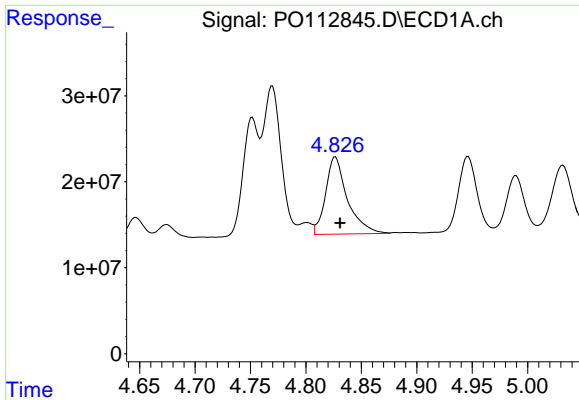
#17 AR-1242-2

R.T.: 4.770 min  
 Delta R.T.: -0.005 min  
 Response: 196139544  
 Conc: 530.40 ng/ml



#17 AR-1242-2

R.T.: 4.751 min  
 Delta R.T.: -0.005 min  
 Response: 117117025  
 Conc: 501.21 ng/ml



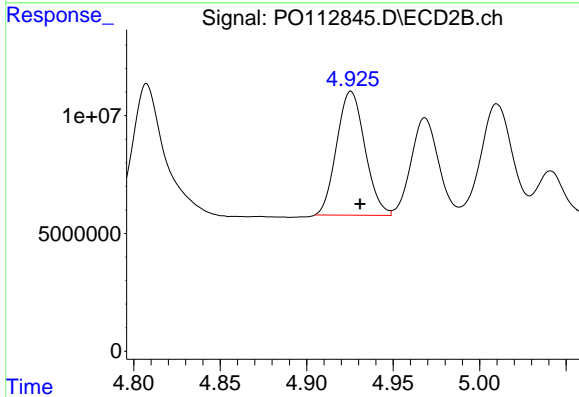
#18 AR-1242-3

R.T.: 4.827 min  
 Delta R.T.: -0.004 min  
 Response: 123007668  
 Conc: 519.77 ng/ml

Instrument :  
 ECD\_O  
 ClientSampleId :  
 AR1242CCC500

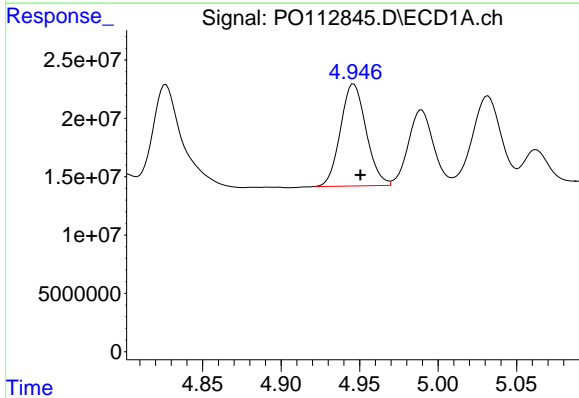
Manual Integrations  
 APPROVED

Reviewed By :Yogesh Patel 08/12/2025  
 Supervised By :mohammad ahmed 08/13/2025



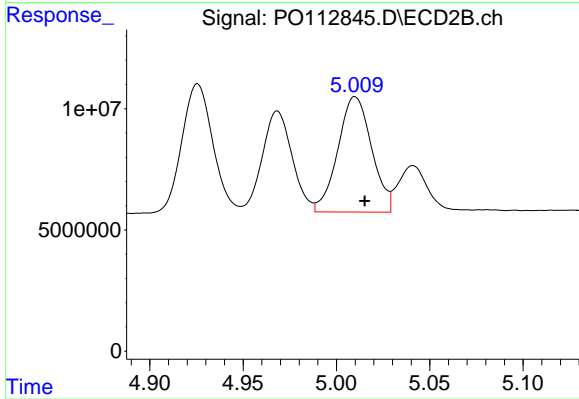
#18 AR-1242-3

R.T.: 4.926 min  
 Delta R.T.: -0.005 min  
 Response: 59568674  
 Conc: 491.53 ng/ml



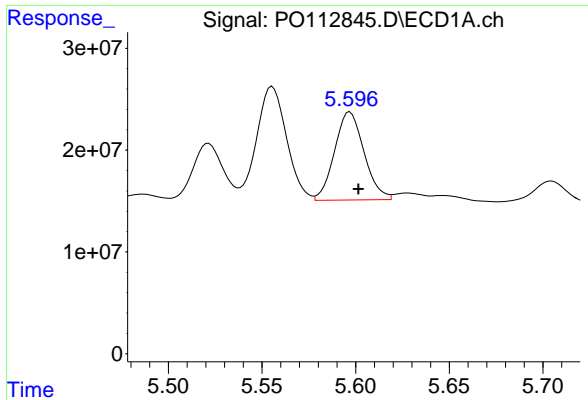
#19 AR-1242-4

R.T.: 4.946 min  
 Delta R.T.: -0.004 min  
 Response: 99557567  
 Conc: 512.45 ng/ml



#19 AR-1242-4

R.T.: 5.010 min  
 Delta R.T.: -0.005 min  
 Response: 59990100  
 Conc: 488.76 ng/ml



#20 AR-1242-5

R.T.: 5.596 min  
 Delta R.T.: -0.005 min  
 Response: 95127309  
 Conc: 444.70 ng/ml

Instrument :

ECD\_O

ClientSampleId :

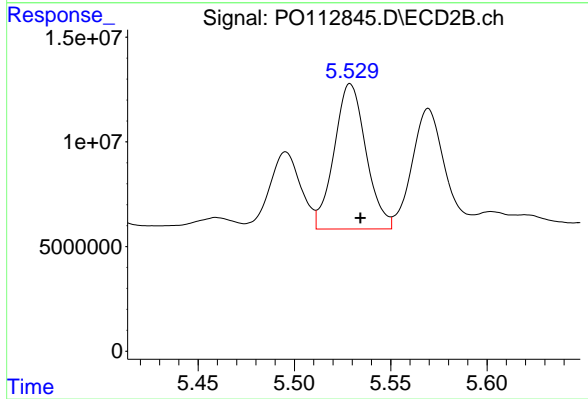
AR1242CCC500

Manual Integrations

APPROVED

Reviewed By :Yogesh Patel 08/12/2025

Supervised By :mohammad ahmed 08/13/2025



#20 AR-1242-5

R.T.: 5.529 min  
 Delta R.T.: -0.005 min  
 Response: 79857234  
 Conc: 496.10 ng/ml