

Data Path : Z:\pestpcbsrv\HPCHEM1\ECD_0\Data\P0081125\
 Data File : P0112846.D
 Signal(s) : Signal #1: ECD1A.ch Signal #2: ECD2B.ch
 Acq On : 11 Aug 2025 19:27
 Operator : YP/AJ
 Sample : AR1248CCC500
 Misc :
 ALS Vial : 5 Sample Multiplier: 1

Instrument :
 ECD_0
ClientSampleId :
 AR1248CCC500

Integration File signal 1: autoint1.e
 Integration File signal 2: autoint2.e
 Quant Time: Aug 12 02:42:51 2025
 Quant Method : Z:\pestpcbsrv\HPCHEM1\ECD_0\methods\P0072325.M
 Quant Title : GC EXTRACTABLES
 QLast Update : Thu Jul 24 04:54:06 2025
 Response via : Initial Calibration
 Integrator: ChemStation

Volume Inj. : 2 µl
 Signal #1 Phase : ZB-MR1 Signal #2 Phase: ZB-MR2
 Signal #1 Info : 30Mx0.32mmx 0.50µ Signal #2 Info : 30M x 0.32mm x 0.25µm

Compound	RT#1	RT#2	Resp#1	Resp#2	ng/ml	ng/ml

System Monitoring Compounds						
1) SA Tetrachlo...	3.667	3.659	455.7E6	263.1E6	56.046	52.951
2) SA Decachlor...	8.687	8.633	329.5E6	88848240	45.062	50.279
Target Compounds						
21) L5 AR-1248-1	4.752	4.733	94009080	57972751	502.162	477.105
22) L5 AR-1248-2	4.990	4.969	129.2E6	81451391	506.459	481.165
23) L5 AR-1248-3	5.203	5.010	178.6E6	86270475	519.738	485.628
24) L5 AR-1248-4	5.556	5.181	271.3E6	102.0E6	533.947	489.781
25) L5 AR-1248-5	5.597	5.570	188.6E6	106.1E6	539.379	494.219

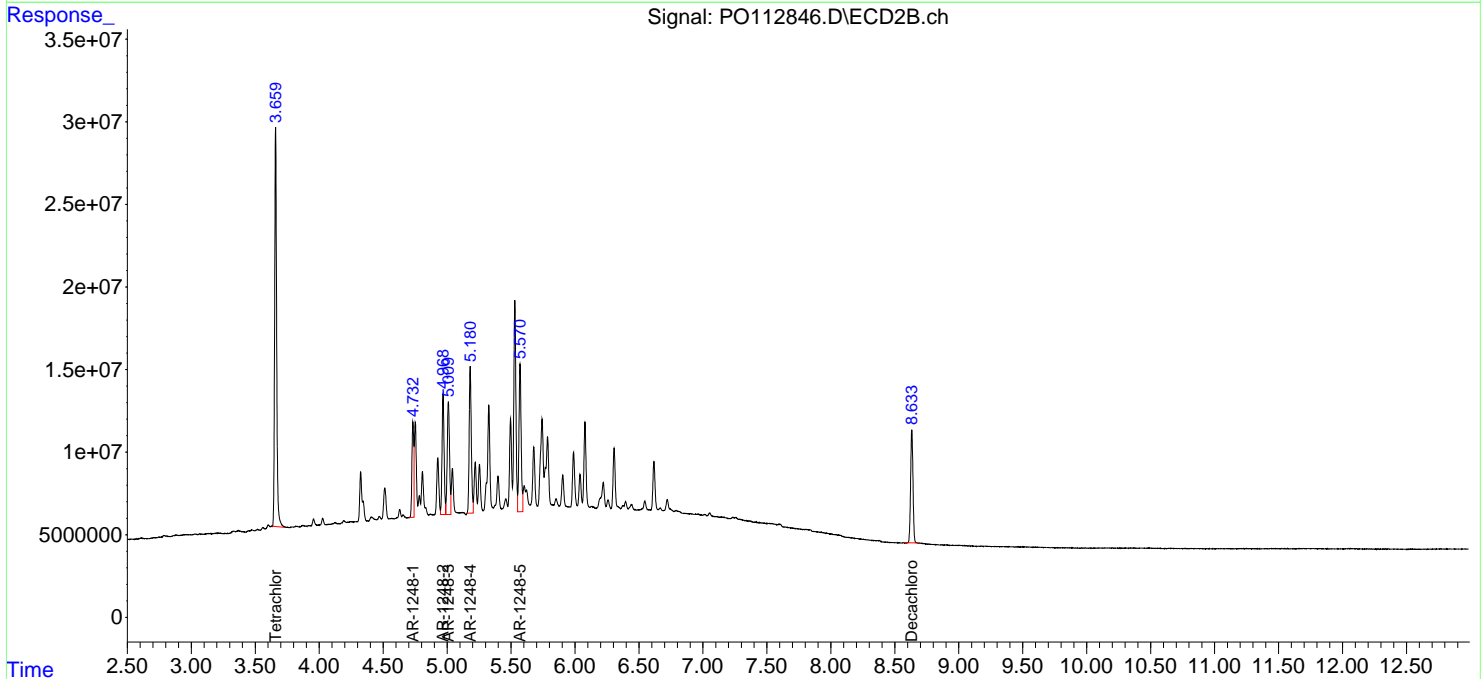
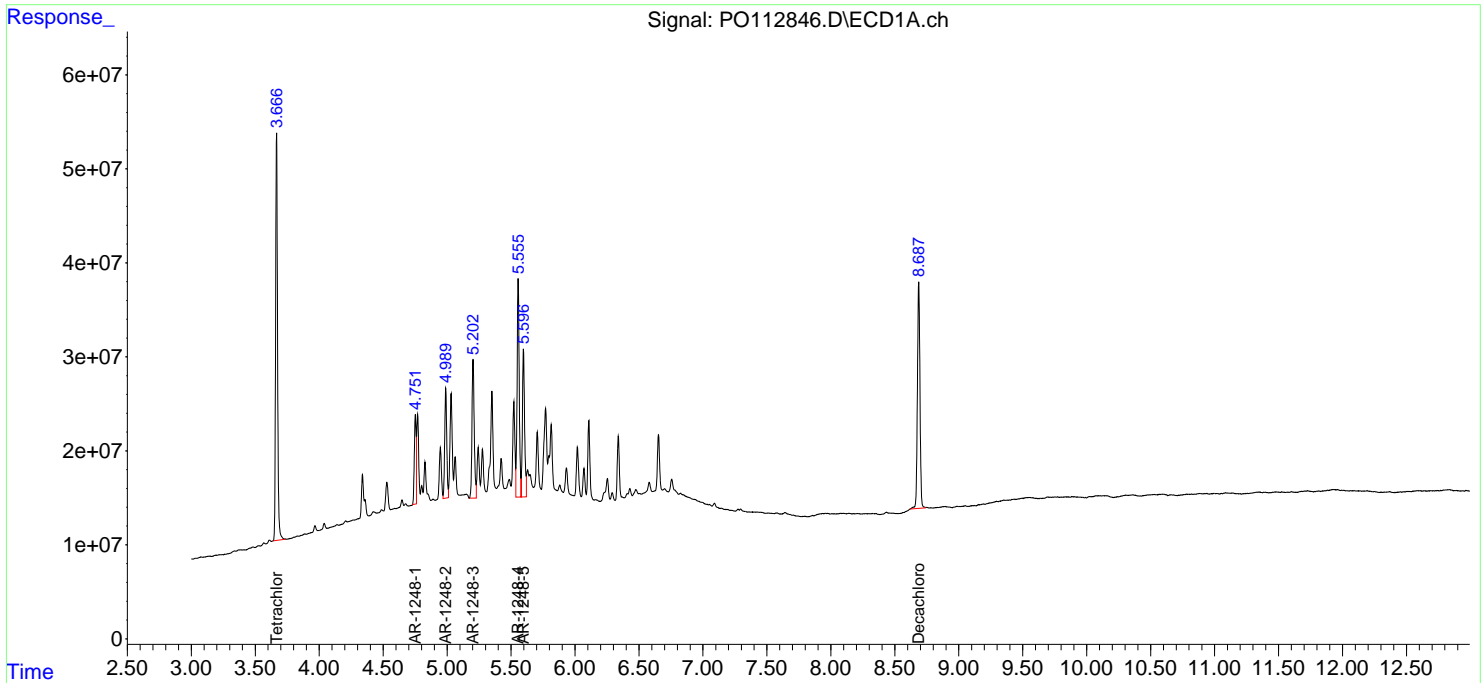
(f)=RT Delta > 1/2 Window (#)=Amounts differ by > 25% (m)=manual int.

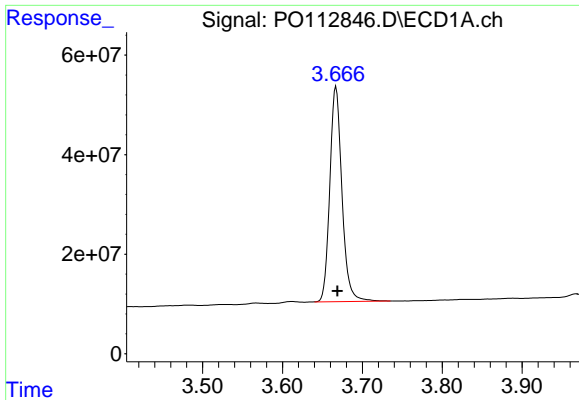
Data Path : Z:\pestpcbsrv\HPCHEM1\ECD_O\Data\PO081125\
 Data File : PO112846.D
 Signal(s) : Signal #1: ECD1A.ch Signal #2: ECD2B.ch
 Acq On : 11 Aug 2025 19:27
 Operator : YP/AJ
 Sample : AR1248CCC500
 Misc :
 ALS Vial : 5 Sample Multiplier: 1

Instrument :
 ECD_O
 ClientSampleId :
 AR1248CCC500

Integration File signal 1: autoint1.e
 Integration File signal 2: autoint2.e
 Quant Time: Aug 12 02:42:51 2025
 Quant Method : Z:\pestpcbsrv\HPCHEM1\ECD_O\methods\PO072325.M
 Quant Title : GC EXTRACTABLES
 QLast Update : Thu Jul 24 04:54:06 2025
 Response via : Initial Calibration
 Integrator: ChemStation

Volume Inj. : 2 µl
 Signal #1 Phase : ZB-MR1 Signal #2 Phase: ZB-MR2
 Signal #1 Info : 30Mx0.32mmx 0.50µ Signal #2 Info : 30M x 0.32mm x 0.25µm

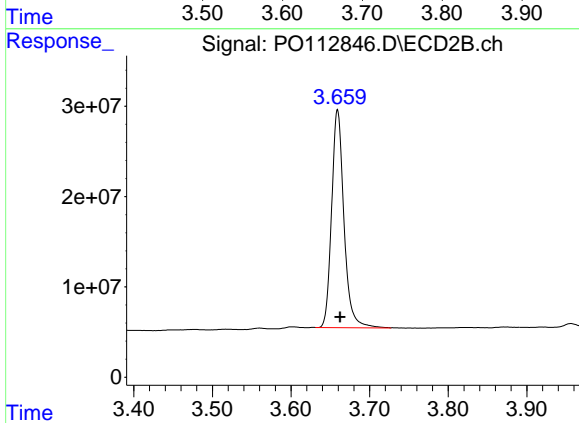




#1 Tetrachloro-m-xylene

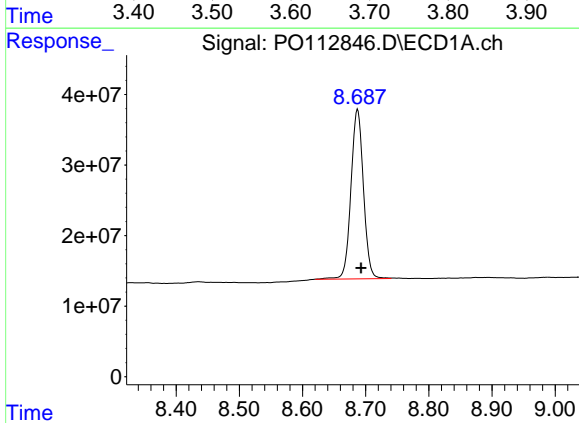
R.T.: 3.667 min
 Delta R.T.: -0.002 min
 Response: 455744173
 Conc: 56.05 ng/ml

Instrument :
 ECD_O
 ClientSampleId :
 AR1248CCC500



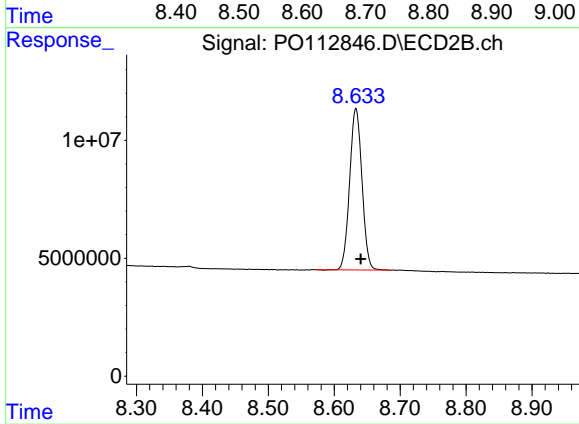
#1 Tetrachloro-m-xylene

R.T.: 3.659 min
 Delta R.T.: -0.003 min
 Response: 263122864
 Conc: 52.95 ng/ml



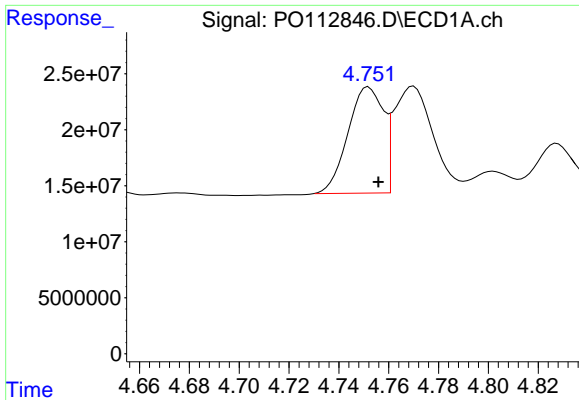
#2 Decachlorobiphenyl

R.T.: 8.687 min
 Delta R.T.: -0.005 min
 Response: 329483190
 Conc: 45.06 ng/ml



#2 Decachlorobiphenyl

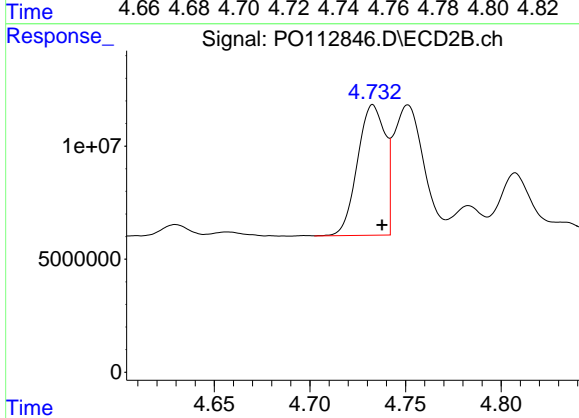
R.T.: 8.633 min
 Delta R.T.: -0.007 min
 Response: 88848240
 Conc: 50.28 ng/ml



#21 AR-1248-1

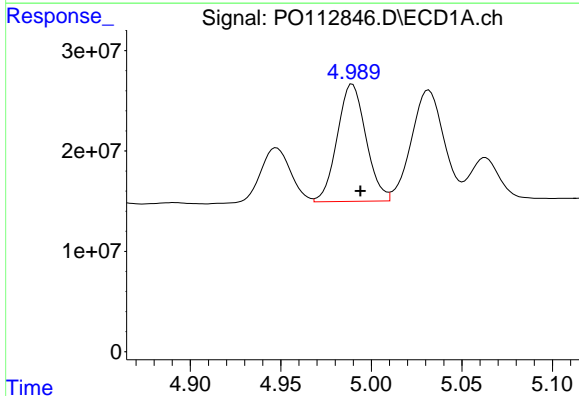
R.T.: 4.752 min
 Delta R.T.: -0.004 min
 Response: 94009080
 Conc: 502.16 ng/ml

Instrument :
 ECD_O
 ClientSampleId :
 AR1248CCC500



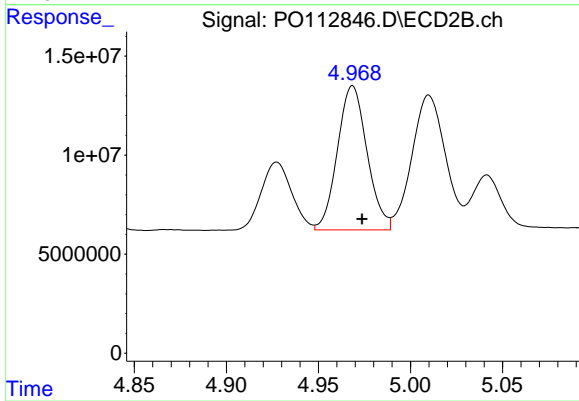
#21 AR-1248-1

R.T.: 4.733 min
 Delta R.T.: -0.005 min
 Response: 57972751
 Conc: 477.11 ng/ml



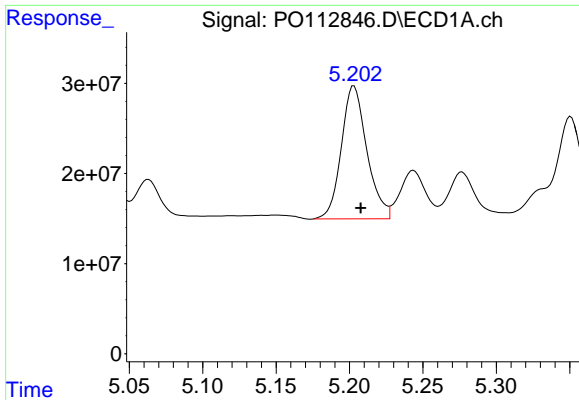
#22 AR-1248-2

R.T.: 4.990 min
 Delta R.T.: -0.004 min
 Response: 129203800
 Conc: 506.46 ng/ml



#22 AR-1248-2

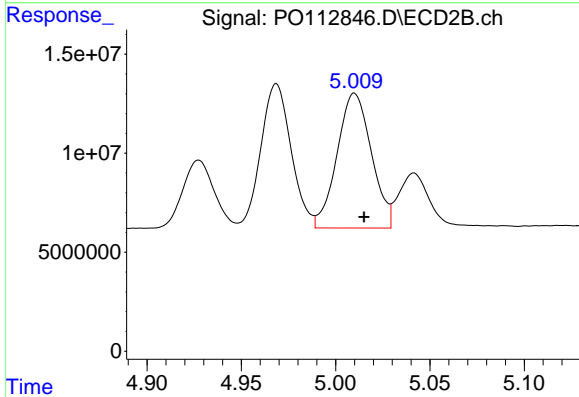
R.T.: 4.969 min
 Delta R.T.: -0.005 min
 Response: 81451391
 Conc: 481.16 ng/ml



#23 AR-1248-3

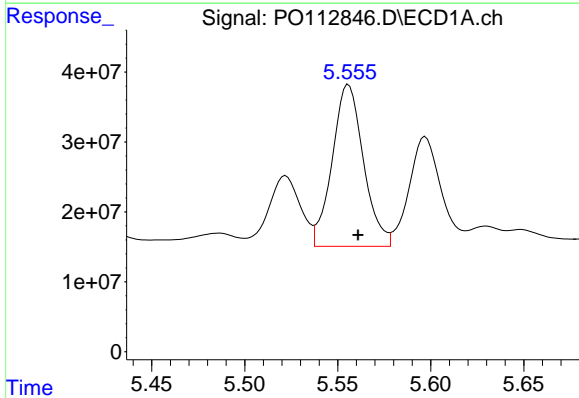
R.T.: 5.203 min
 Delta R.T.: -0.005 min
 Response: 178634632
 Conc: 519.74 ng/ml

Instrument :
 ECD_O
 ClientSampleId :
 AR1248CCC500



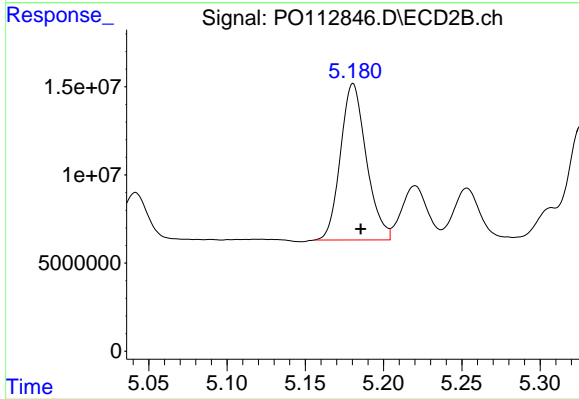
#23 AR-1248-3

R.T.: 5.010 min
 Delta R.T.: -0.005 min
 Response: 86270475
 Conc: 485.63 ng/ml



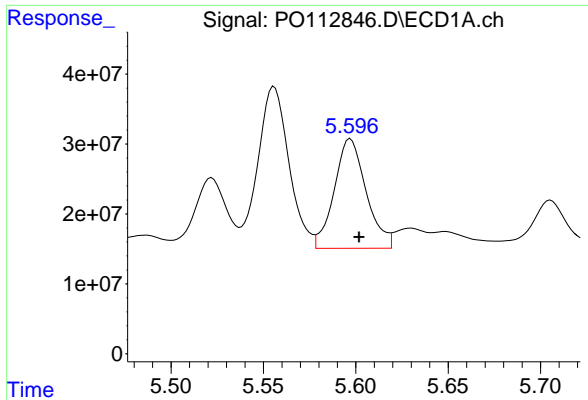
#24 AR-1248-4

R.T.: 5.556 min
 Delta R.T.: -0.005 min
 Response: 271286702
 Conc: 533.95 ng/ml



#24 AR-1248-4

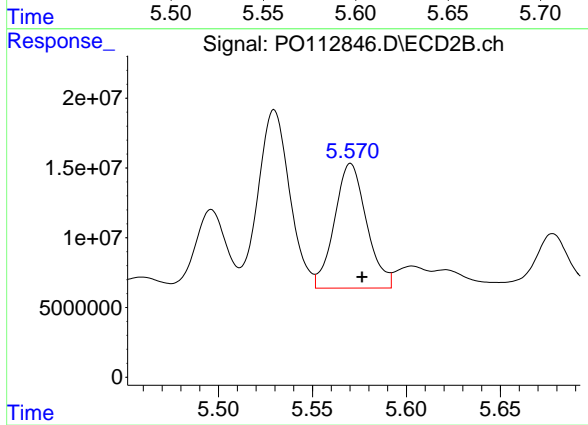
R.T.: 5.181 min
 Delta R.T.: -0.005 min
 Response: 102048198
 Conc: 489.78 ng/ml



#25 AR-1248-5

R.T.: 5.597 min
Delta R.T.: -0.005 min
Response: 188562041
Conc: 539.38 ng/ml

Instrument :
ECD_O
ClientSampleId :
AR1248CCC500



#25 AR-1248-5

R.T.: 5.570 min
Delta R.T.: -0.006 min
Response: 106140869
Conc: 494.22 ng/ml