

Data Path : Z:\pestpcbsrv\HPCHEM1\ECD_0\Data\P0081125\
 Data File : PO112847.D
 Signal(s) : Signal #1: ECD1A.ch Signal #2: ECD2B.ch
 Acq On : 11 Aug 2025 19:45
 Operator : YP/AJ
 Sample : AR1254CCC500
 Misc :
 ALS Vial : 6 Sample Multiplier: 1

Instrument :
 ECD_0
 ClientSampleId :
 AR1254CCC500

Integration File signal 1: autoint1.e
 Integration File signal 2: autoint2.e
 Quant Time: Aug 12 02:43:04 2025
 Quant Method : Z:\pestpcbsrv\HPCHEM1\ECD_0\methods\P0072325.M
 Quant Title : GC EXTRACTABLES
 QLast Update : Thu Jul 24 04:54:06 2025
 Response via : Initial Calibration
 Integrator: ChemStation

Volume Inj. : 2 µl
 Signal #1 Phase : ZB-MR1 Signal #2 Phase: ZB-MR2
 Signal #1 Info : 30Mx0.32mmx 0.50µ Signal #2 Info : 30M x 0.32mm x 0.25µm

Compound	RT#1	RT#2	Resp#1	Resp#2	ng/ml	ng/ml

System Monitoring Compounds						
1) SA Tetrachlo...	3.667	3.659	471.8E6	273.2E6	58.024	54.976
2) SA Decachlor...	8.687	8.633	329.7E6	91689503	45.088	51.887
Target Compounds						
26) L6 AR-1254-1	5.556	5.530	306.3E6	166.4E6	557.955	506.455
27) L6 AR-1254-2	5.705	5.678	278.3E6	148.1E6	572.808	511.515
28) L6 AR-1254-3	6.108	6.078	362.7E6	215.0E6	487.264	503.064
29) L6 AR-1254-4	6.338	6.306	248.2E6	134.5E6	451.476	492.773
30) L6 AR-1254-5	6.757	6.721	417.8E6	169.0E6	590.235	505.866

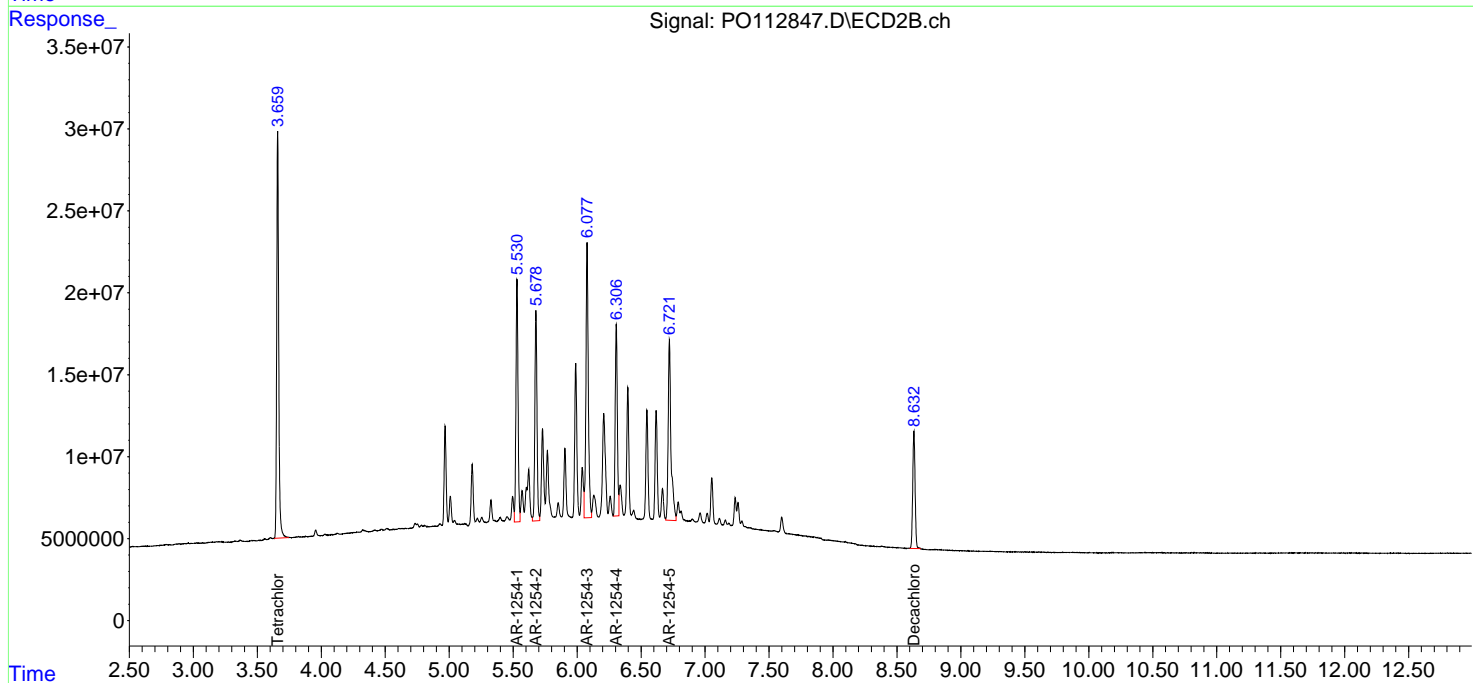
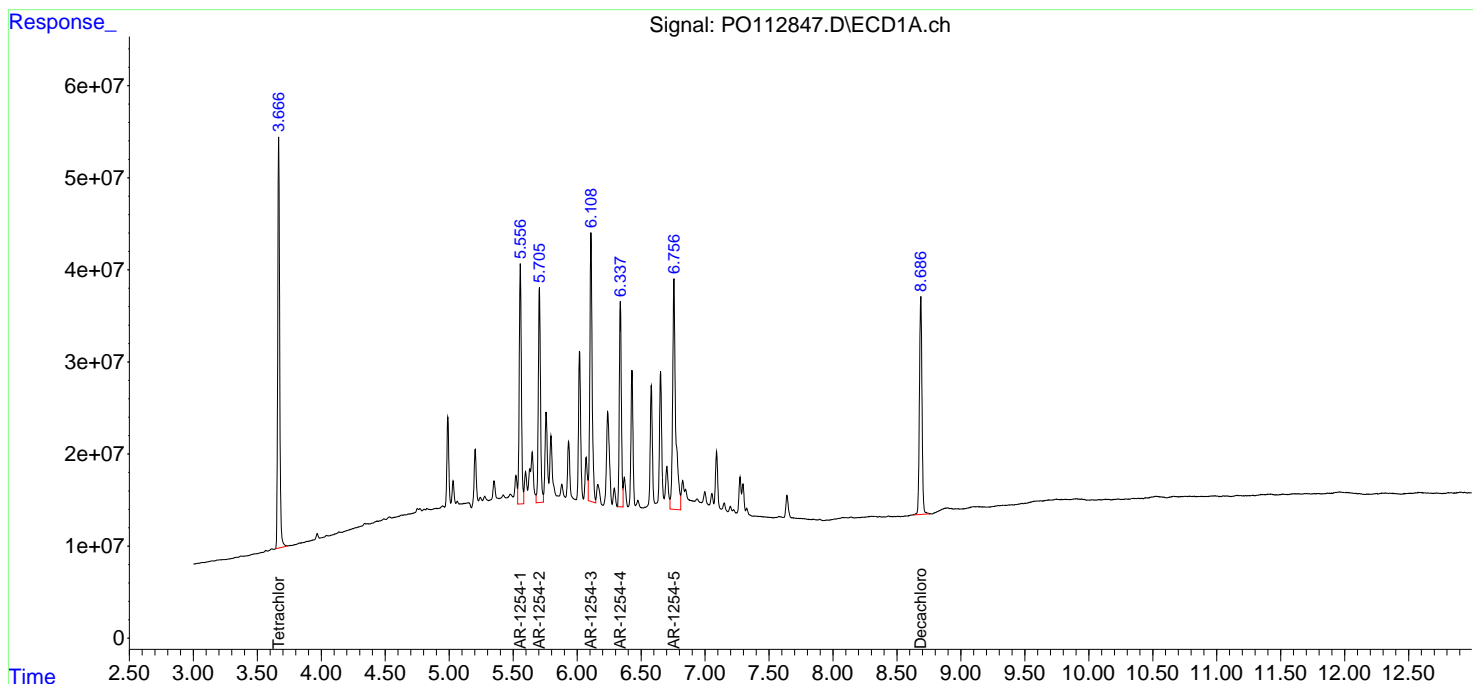
(f)=RT Delta > 1/2 Window (#)=Amounts differ by > 25% (m)=manual int.

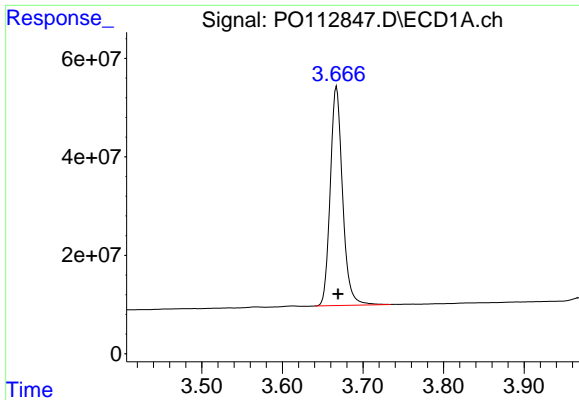
Data Path : Z:\pestpcbsrv\HPCHEM1\ECD_O\Data\PO081125\
 Data File : PO112847.D
 Signal(s) : Signal #1: ECD1A.ch Signal #2: ECD2B.ch
 Acq On : 11 Aug 2025 19:45
 Operator : YP/AJ
 Sample : AR1254CCC500
 Misc :
 ALS Vial : 6 Sample Multiplier: 1

Instrument :
 ECD_O
 ClientSampleId :
 AR1254CCC500

Integration File signal 1: autoint1.e
 Integration File signal 2: autoint2.e
 Quant Time: Aug 12 02:43:04 2025
 Quant Method : Z:\pestpcbsrv\HPCHEM1\ECD_O\methods\PO072325.M
 Quant Title : GC EXTRACTABLES
 QLast Update : Thu Jul 24 04:54:06 2025
 Response via : Initial Calibration
 Integrator: ChemStation

Volume Inj. : 2 µl
 Signal #1 Phase : ZB-MR1 Signal #2 Phase: ZB-MR2
 Signal #1 Info : 30Mx0.32mmx 0.50µ Signal #2 Info : 30M x 0.32mm x 0.25µm

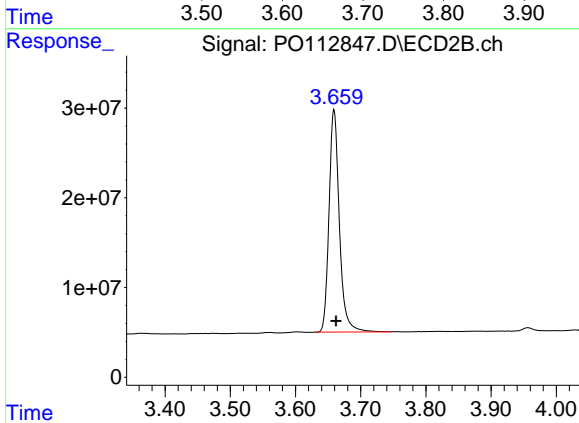




#1 Tetrachloro-m-xylene

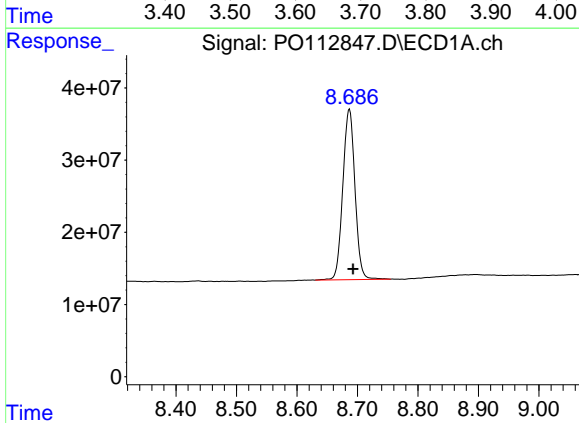
R.T.: 3.667 min
 Delta R.T.: -0.002 min
 Response: 471827691
 Conc: 58.02 ng/ml

Instrument :
 ECD_O
 ClientSampleId :
 AR1254CCC500



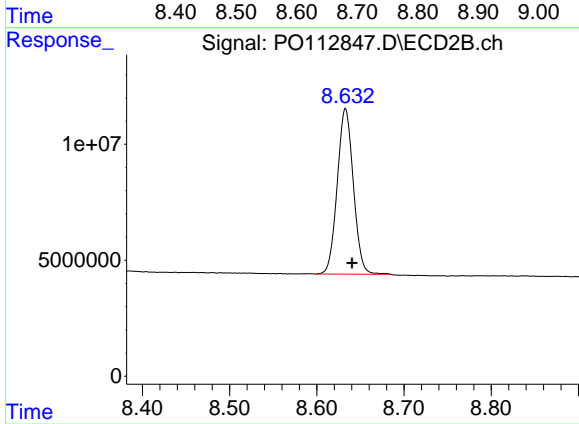
#1 Tetrachloro-m-xylene

R.T.: 3.659 min
 Delta R.T.: -0.003 min
 Response: 273184509
 Conc: 54.98 ng/ml



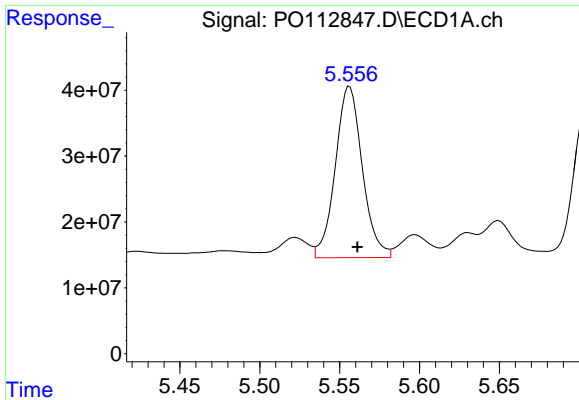
#2 Decachlorobiphenyl

R.T.: 8.687 min
 Delta R.T.: -0.006 min
 Response: 329671659
 Conc: 45.09 ng/ml



#2 Decachlorobiphenyl

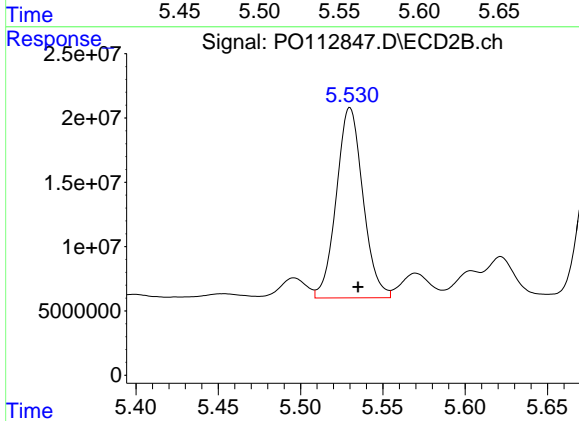
R.T.: 8.633 min
 Delta R.T.: -0.008 min
 Response: 91689503
 Conc: 51.89 ng/ml



#26 AR-1254-1

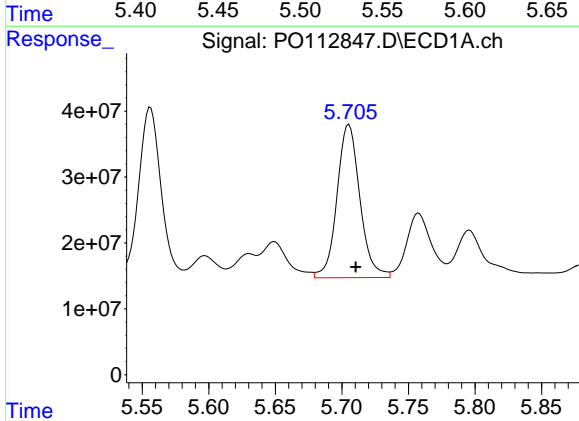
R.T.: 5.556 min
 Delta R.T.: -0.005 min
 Response: 306294228
 Conc: 557.96 ng/ml

Instrument :
 ECD_O
 ClientSampleId :
 AR1254CCC500



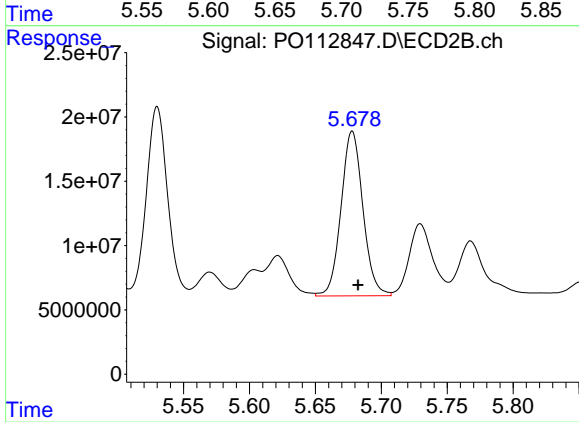
#26 AR-1254-1

R.T.: 5.530 min
 Delta R.T.: -0.005 min
 Response: 166431898
 Conc: 506.46 ng/ml



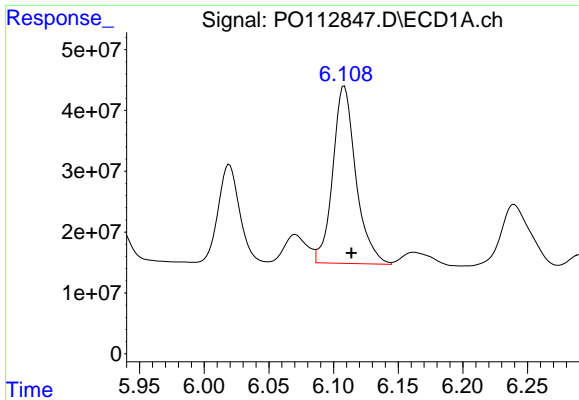
#27 AR-1254-2

R.T.: 5.705 min
 Delta R.T.: -0.005 min
 Response: 278338312
 Conc: 572.81 ng/ml



#27 AR-1254-2

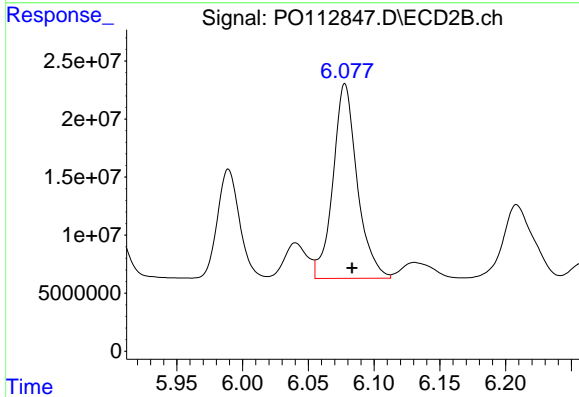
R.T.: 5.678 min
 Delta R.T.: -0.004 min
 Response: 148078956
 Conc: 511.52 ng/ml



#28 AR-1254-3

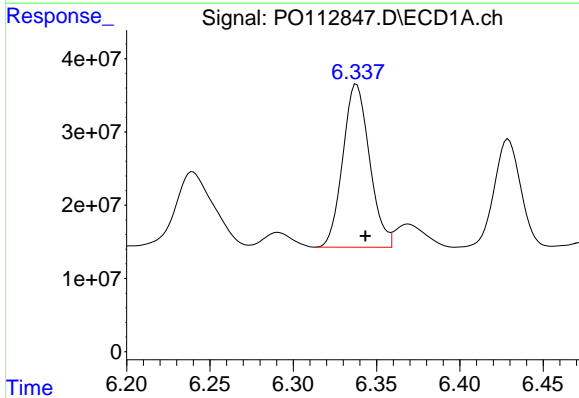
R.T.: 6.108 min
Delta R.T.: -0.005 min
Response: 362663928
Conc: 487.26 ng/ml

Instrument :
ECD_O
ClientSampleId :
AR1254CCC500



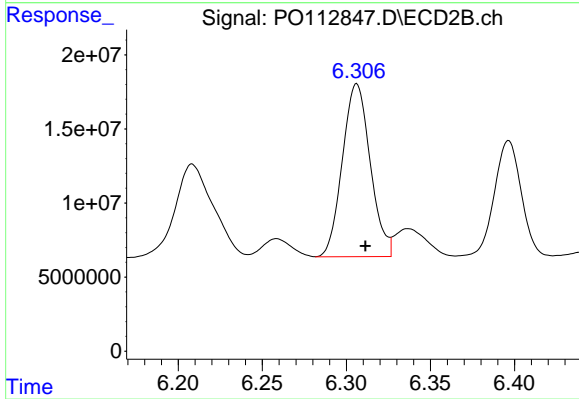
#28 AR-1254-3

R.T.: 6.078 min
Delta R.T.: -0.005 min
Response: 215040551
Conc: 503.06 ng/ml



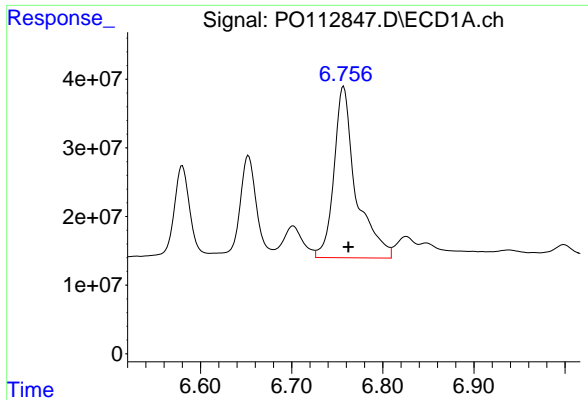
#29 AR-1254-4

R.T.: 6.338 min
Delta R.T.: -0.005 min
Response: 248178224
Conc: 451.48 ng/ml



#29 AR-1254-4

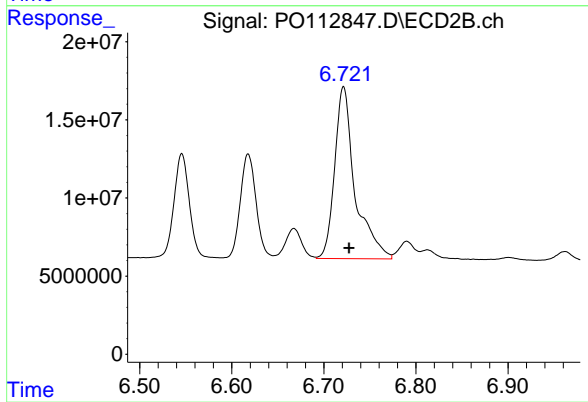
R.T.: 6.306 min
Delta R.T.: -0.005 min
Response: 134508869
Conc: 492.77 ng/ml



#30 AR-1254-5

R.T.: 6.757 min
Delta R.T.: -0.005 min
Response: 417782921
Conc: 590.24 ng/ml

Instrument :
ECD_O
ClientSampleId :
AR1254CCC500



#30 AR-1254-5

R.T.: 6.721 min
Delta R.T.: -0.006 min
Response: 168969114
Conc: 505.87 ng/ml