

Data Path : Z:\pestpcbsrv\HPCHEM1\ECD\_0\Data\P0081125\  
 Data File : P0112848.D  
 Signal(s) : Signal #1: ECD1A.ch Signal #2: ECD2B.ch  
 Acq On : 11 Aug 2025 20:02  
 Operator : YP/AJ  
 Sample : I.BLK  
 Misc :  
 ALS Vial : 2 Sample Multiplier: 1

Instrument :  
 ECD\_0  
 ClientSampleId :  
 I.BLK

Integration File signal 1: autoint1.e  
 Integration File signal 2: autoint2.e  
 Quant Time: Aug 12 02:43:17 2025  
 Quant Method : Z:\pestpcbsrv\HPCHEM1\ECD\_0\methods\P0072325.M  
 Quant Title : GC EXTRACTABLES  
 QLast Update : Thu Jul 24 04:54:06 2025  
 Response via : Initial Calibration  
 Integrator: ChemStation

Volume Inj. : 2 µl  
 Signal #1 Phase : ZB-MR1 Signal #2 Phase: ZB-MR2  
 Signal #1 Info : 30Mx0.32mmx 0.50µ Signal #2 Info : 30M x 0.32mm x 0.25µm

Compound	RT#1	RT#2	Resp#1	Resp#2	ng/ml	ng/ml
-----						
System Monitoring Compounds						
1) SA Tetrachlo...	3.665	3.659	175.8E6	103.1E6	21.621	20.742
2) SA Decachlor...	8.685	8.632	126.5E6	35985055	17.302	20.364

Target Compounds

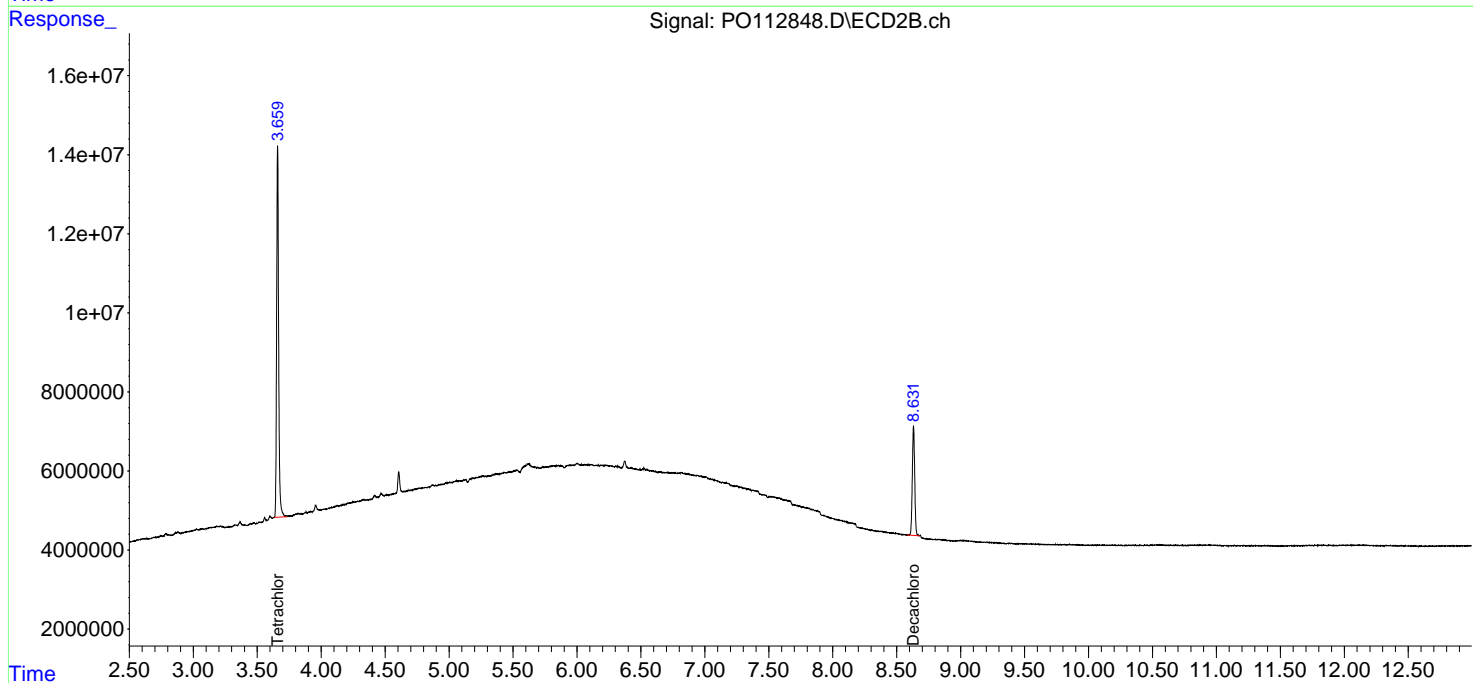
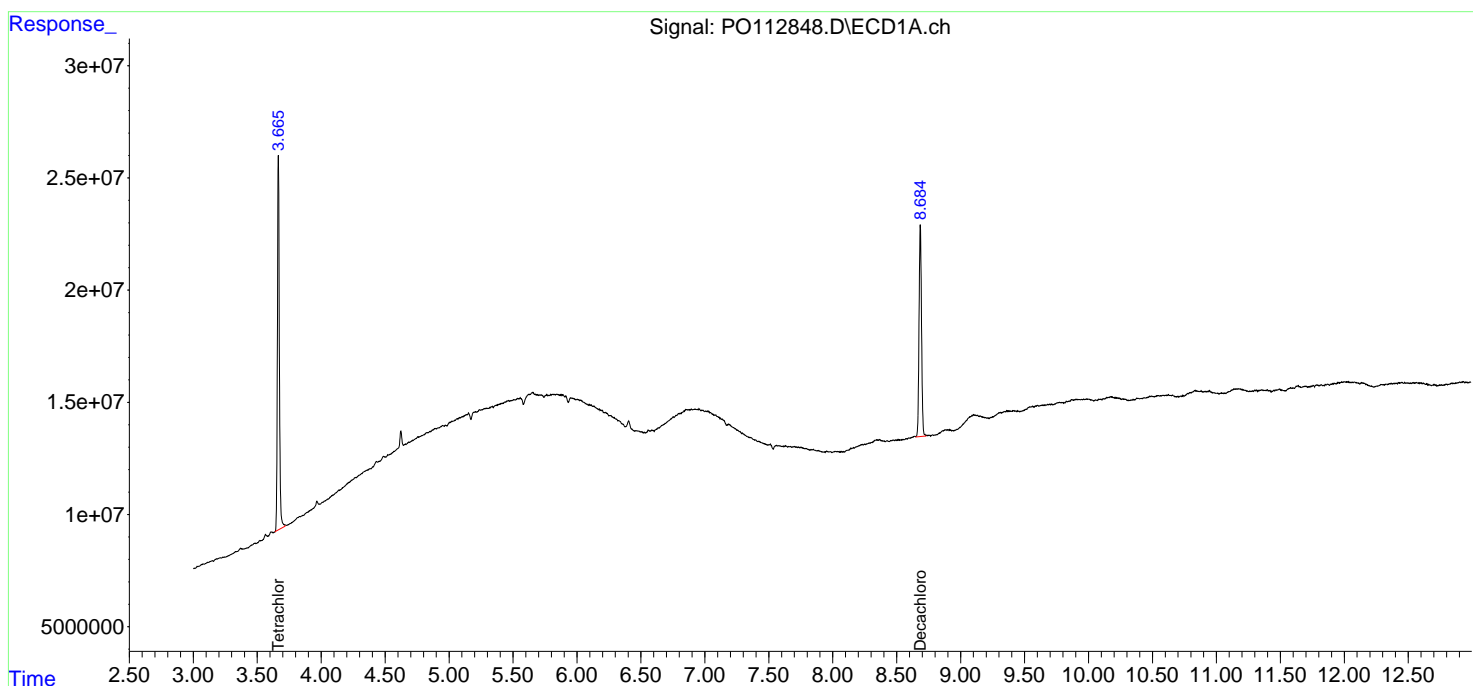
(f)=RT Delta > 1/2 Window (#)=Amounts differ by > 25% (m)=manual int.

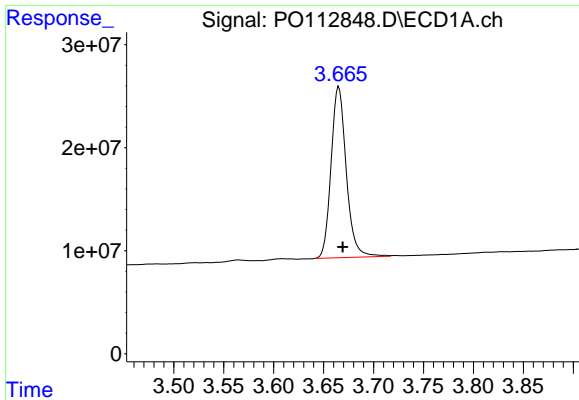
Data Path : Z:\pestpcbsrv\HPCHEM1\ECD\_0\Data\PO081125\  
 Data File : PO112848.D  
 Signal(s) : Signal #1: ECD1A.ch Signal #2: ECD2B.ch  
 Acq On : 11 Aug 2025 20:02  
 Operator : YP/AJ  
 Sample : I.BLK  
 Misc :  
 ALS Vial : 2 Sample Multiplier: 1

Instrument :  
 ECD\_0  
 ClientSampleId :  
 I.BLK

Integration File signal 1: autoint1.e  
 Integration File signal 2: autoint2.e  
 Quant Time: Aug 12 02:43:17 2025  
 Quant Method : Z:\pestpcbsrv\HPCHEM1\ECD\_0\methods\PO072325.M  
 Quant Title : GC EXTRACTABLES  
 QLast Update : Thu Jul 24 04:54:06 2025  
 Response via : Initial Calibration  
 Integrator: ChemStation

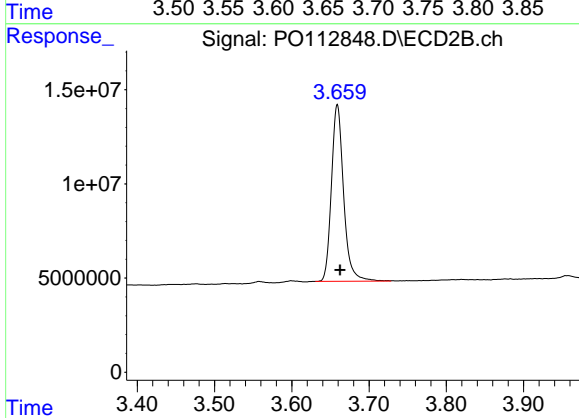
Volume Inj. : 2 µl  
 Signal #1 Phase : ZB-MR1 Signal #2 Phase: ZB-MR2  
 Signal #1 Info : 30Mx0.32mmx 0.50µ Signal #2 Info : 30M x 0.32mm x 0.25µm



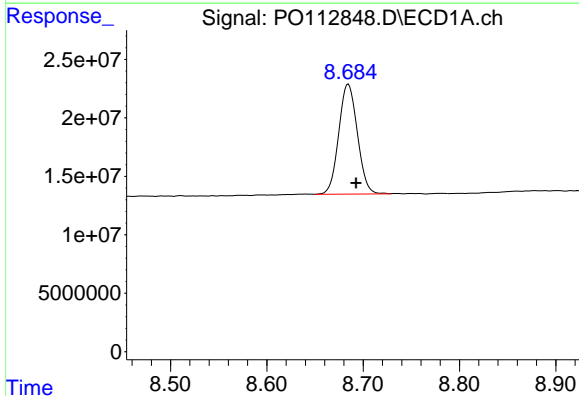


#1 Tetrachloro-m-xylene  
 R.T.: 3.665 min  
 Delta R.T.: -0.004 min  
 Response: 175812980  
 Conc: 21.62 ng/ml

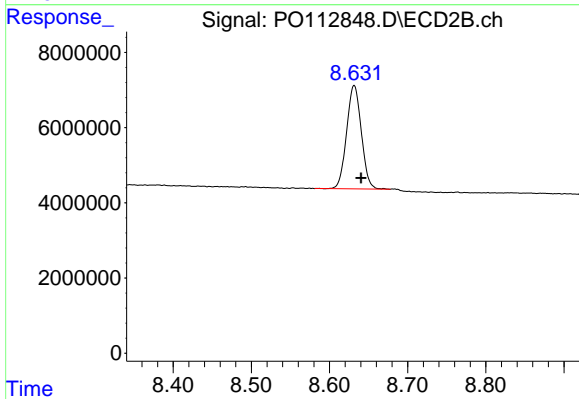
Instrument :  
 ECD\_O  
 ClientSampleId :  
 I.BLK



#1 Tetrachloro-m-xylene  
 R.T.: 3.659 min  
 Delta R.T.: -0.003 min  
 Response: 103072155  
 Conc: 20.74 ng/ml



#2 Decachlorobiphenyl  
 R.T.: 8.685 min  
 Delta R.T.: -0.008 min  
 Response: 126505954  
 Conc: 17.30 ng/ml



#2 Decachlorobiphenyl  
 R.T.: 8.632 min  
 Delta R.T.: -0.009 min  
 Response: 35985055  
 Conc: 20.36 ng/ml