

Data Path : Z:\pestpcbsrv\HPCHEM1\ECD_0\Data\P0081221\
 Data File : P0080380.D
 Signal(s) : Signal #1: ECD1A.CH Signal #2: ECD2B.CH
 Acq On : 12 Aug 2021 14:56
 Operator : DD\AJ
 Sample : M3372-01 10X
 Misc :
 ALS Vial : 14 Sample Multiplier: 1

Instrument :
 ECD_0
 ClientSampleId :
 HKA318J-END-1-1

Integration File signal 1: autoint1.e
 Integration File signal 2: autoint2.e
 Quant Time: Aug 13 01:33:33 2021
 Quant Method : Z:\pestpcbsrv\HPCHEM1\ECD_0\methods\P0081021.M
 Quant Title : GC EXTRACTABLES
 QLast Update : Wed Aug 11 05:48:32 2021
 Response via : Initial Calibration
 Integrator: ChemStation 6890 Scale Mode: Small noise peaks clipped

Volume Inj. : 2 µl
 Signal #1 Phase : ZB-MR1 Signal #2 Phase: ZB-MR2
 Signal #1 Info : 30Mx0.32mmx 0.50µ Signal #2 Info : 30M x 0.32mm x 0.25µm

Compound	RT#1	RT#2	Resp#1	Resp#2	ng/ml	ng/ml

System Monitoring Compounds						
1) SA Tetrachlo...	4.994	4.108	97475	43122	1.408	1.730
2) SA Decachlor...	11.100	9.509	82031	35997	1.585	1.587

Target Compounds

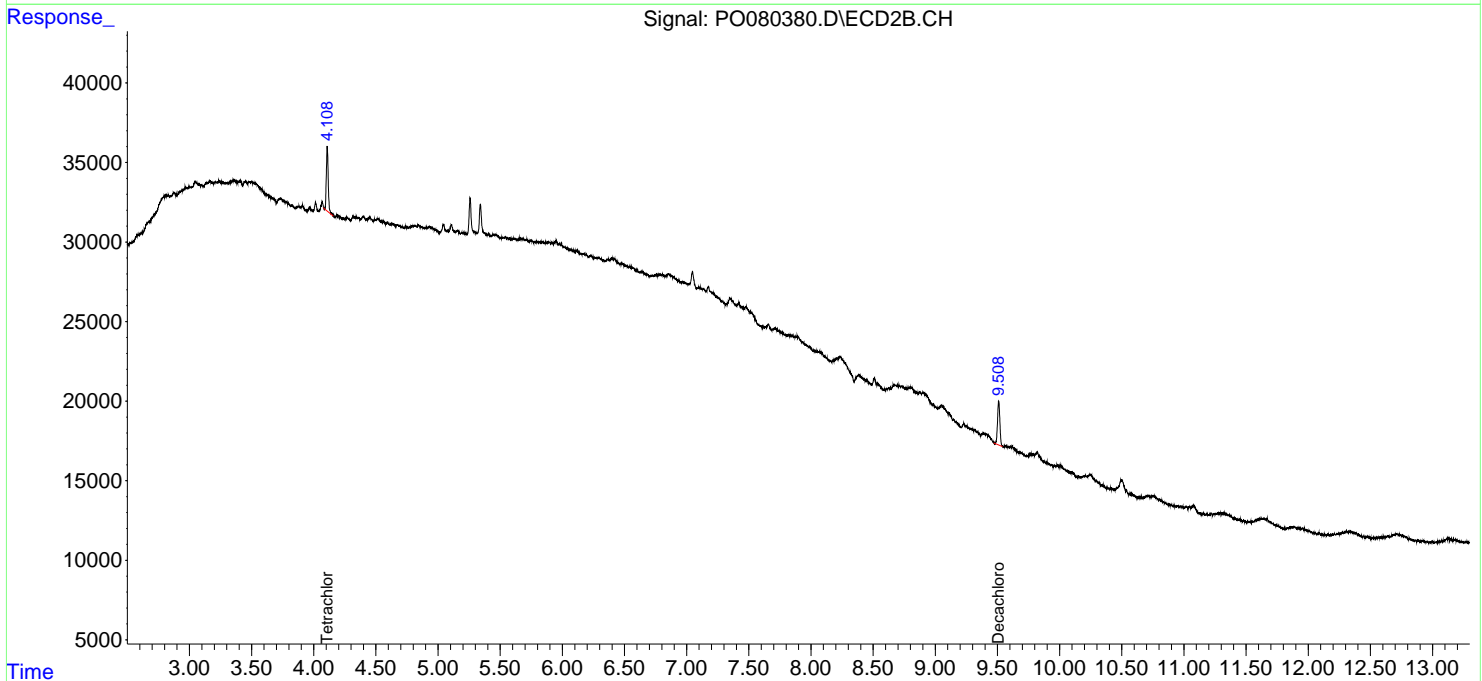
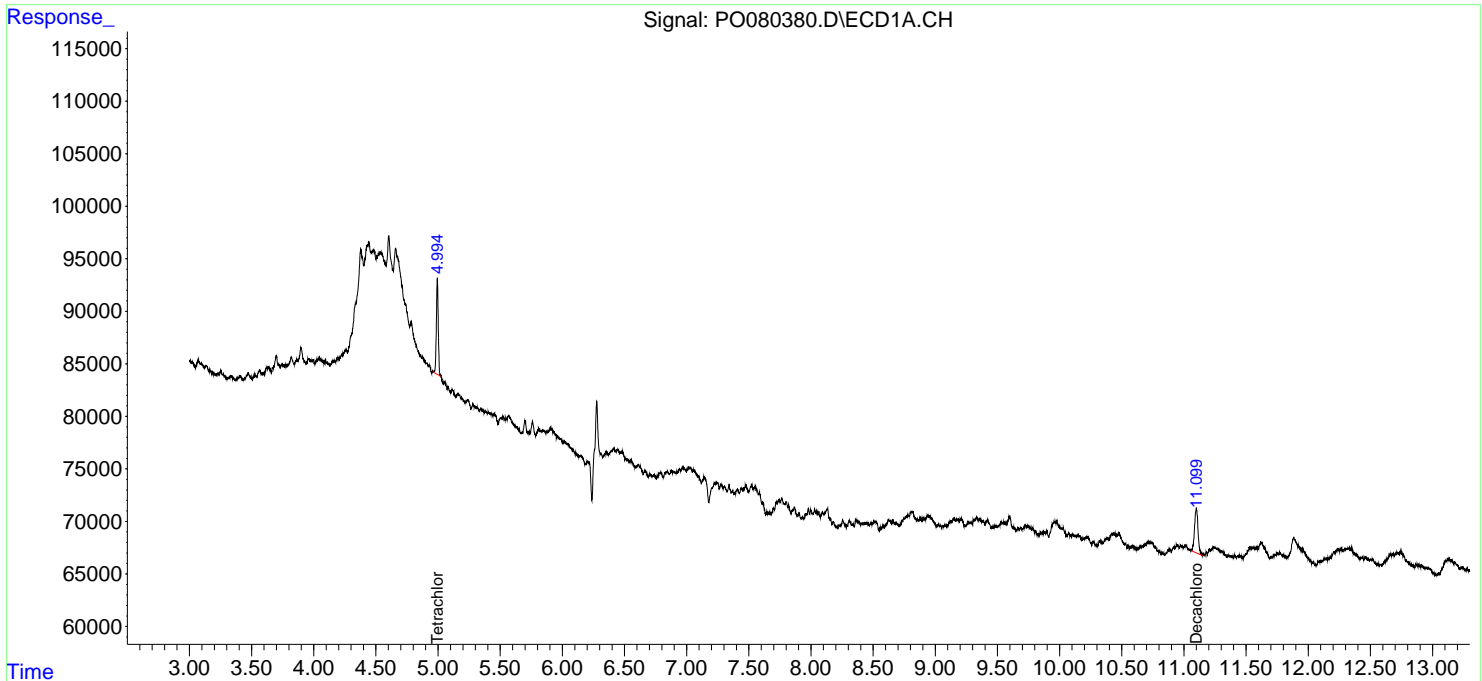
(f)=RT Delta > 1/2 Window (#)=Amounts differ by > 25% (m)=manual int.

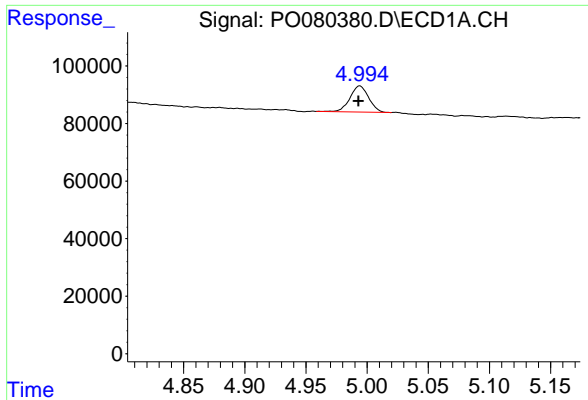
Data Path : Z:\pestpcbsrv\HPCHEM1\ECD_0\Data\P0081221\
 Data File : P0080380.D
 Signal(s) : Signal #1: ECD1A.CH Signal #2: ECD2B.CH
 Acq On : 12 Aug 2021 14:56
 Operator : DD\AJ
 Sample : M3372-01 10X
 Misc :
 ALS Vial : 14 Sample Multiplier: 1

Instrument :
 ECD_O
 ClientSampleId :
 HKA318J-END-1-1

Integration File signal 1: autoint1.e
 Integration File signal 2: autoint2.e
 Quant Time: Aug 13 01:33:33 2021
 Quant Method : Z:\pestpcbsrv\HPCHEM1\ECD_0\methods\P0081021.M
 Quant Title : GC EXTRACTABLES
 QLast Update : Wed Aug 11 05:48:32 2021
 Response via : Initial Calibration
 Integrator: ChemStation 6890 Scale Mode: Small noise peaks clipped

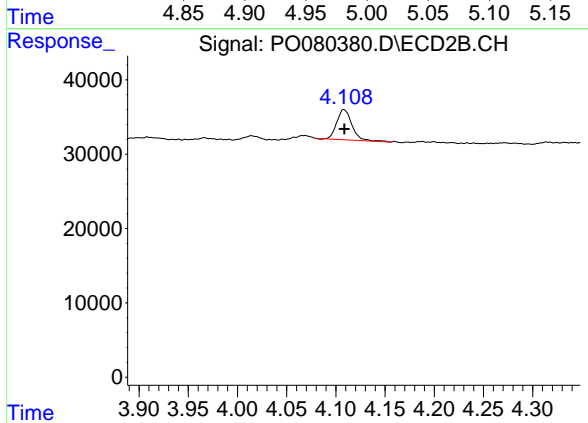
Volume Inj. : 2 µl
 Signal #1 Phase : ZB-MR1 Signal #2 Phase: ZB-MR2
 Signal #1 Info : 30Mx0.32mmx 0.50µ Signal #2 Info : 30M x 0.32mm x 0.25µm



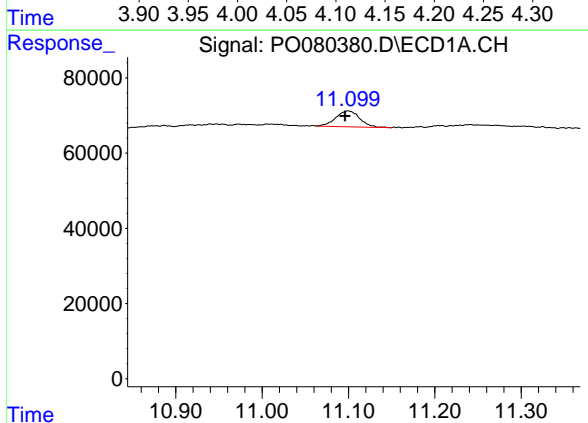


#1 Tetrachloro-m-xylene
 R.T.: 4.994 min
 Delta R.T.: 0.001 min
 Response: 97475
 Conc: 1.41 ng/ml

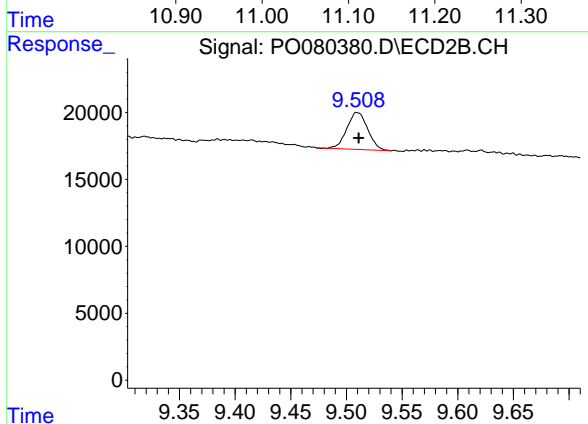
Instrument :
 ECD_O
 ClientSampleId :
 HKA318J-END-1-1



#1 Tetrachloro-m-xylene
 R.T.: 4.108 min
 Delta R.T.: 0.000 min
 Response: 43122
 Conc: 1.73 ng/ml



#2 Decachlorobiphenyl
 R.T.: 11.100 min
 Delta R.T.: 0.003 min
 Response: 82031
 Conc: 1.58 ng/ml



#2 Decachlorobiphenyl
 R.T.: 9.509 min
 Delta R.T.: -0.002 min
 Response: 35997
 Conc: 1.59 ng/ml