

Data Path : Z:\pestpcbsrv\HPCHEM1\ECD_0\Data\P0081222\
 Data File : P0088900.D
 Signal(s) : Signal #1: ECD1A.ch Signal #2: ECD2B.ch
 Acq On : 12 Aug 2022 09:37
 Operator : YP/AJ
 Sample : AR1660CCC500
 Misc :
 ALS Vial : 3 Sample Multiplier: 1

Instrument :
 ECD_0
 ClientSampleId :
 AR1660CCC500

Integration File signal 1: autoint1.e
 Integration File signal 2: autoint2.e
 Quant Time: Aug 13 00:30:53 2022
 Quant Method : Z:\pestpcbsrv\HPCHEM1\ECD_0\methods\P0080422.M
 Quant Title : GC EXTRACTABLES
 QLast Update : Fri Aug 05 23:24:09 2022
 Response via : Initial Calibration
 Integrator: ChemStation

Volume Inj. : 2 µl
 Signal #1 Phase : ZB-MR1 Signal #2 Phase: ZB-MR2
 Signal #1 Info : 30Mx0.32mmx 0.50µ Signal #2 Info : 30M x 0.32mm x 0.25µm

Compound	RT#1	RT#2	Resp#1	Resp#2	ng/ml	ng/ml

System Monitoring Compounds						
1) SA Tetrachlo...	4.434	3.592	137.0E6	49714937	50.786	45.935
2) SA Decachlor...	10.274	8.583	101.5E6	58953032	52.611	48.645
Target Compounds						
3) L1 AR-1016-1	5.611	4.669	42926767	19202734	532.492	515.235
4) L1 AR-1016-2	5.634	4.687	61817632	27397649	535.956	525.497
5) L1 AR-1016-3	5.697	4.863	38227560	15024241	528.994	513.517
6) L1 AR-1016-4	5.796	4.905	30146099	12211626	525.794	506.235
7) L1 AR-1016-5	6.092	5.117	29617479	16710665	516.329	512.358
31) L7 AR-1260-1	7.225	6.149	52527711	31050949	508.268	488.576
32) L7 AR-1260-2	7.483	6.338	61184311	37468514	517.637	488.974
33) L7 AR-1260-3	7.844	6.490	46464708	34704414	528.961	483.070
34) L7 AR-1260-4	8.071	6.961	50886849	29191491	519.566	478.386
35) L7 AR-1260-5	8.399	7.204	97742762	68526537	530.641	485.859

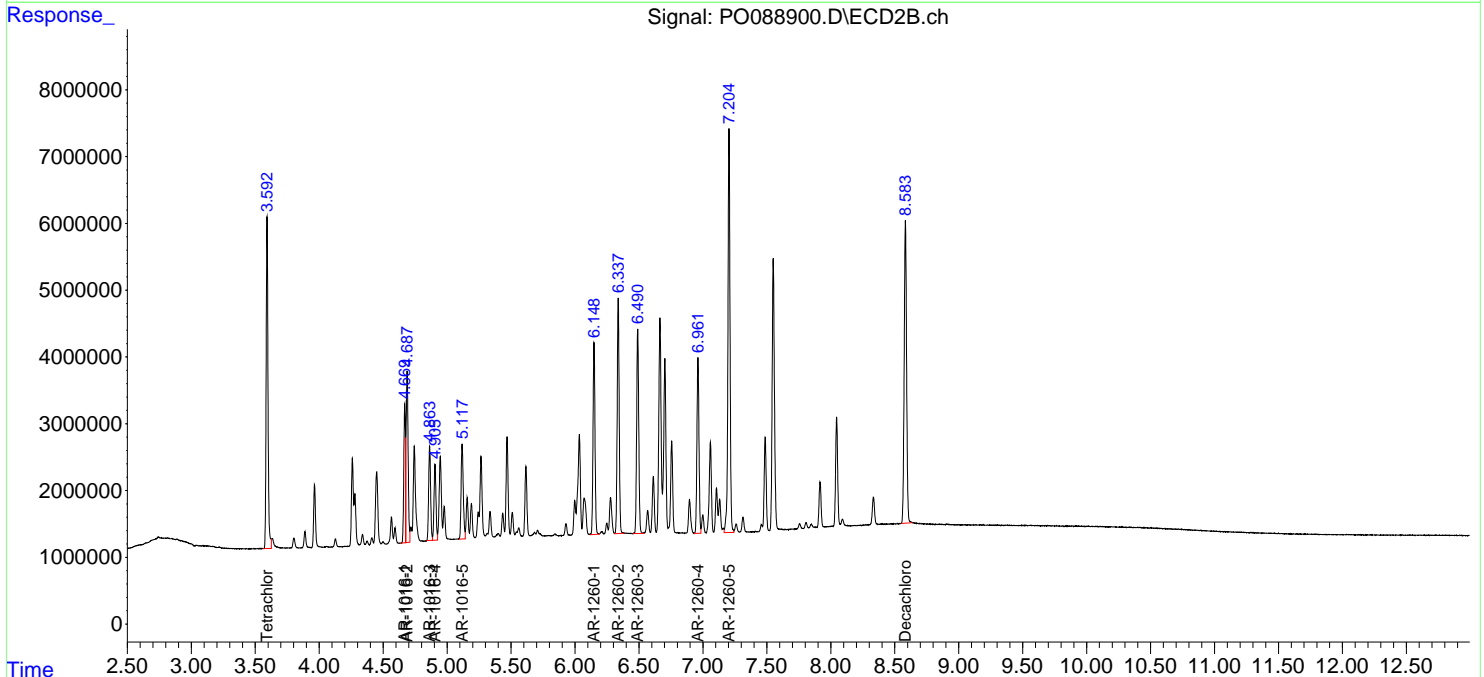
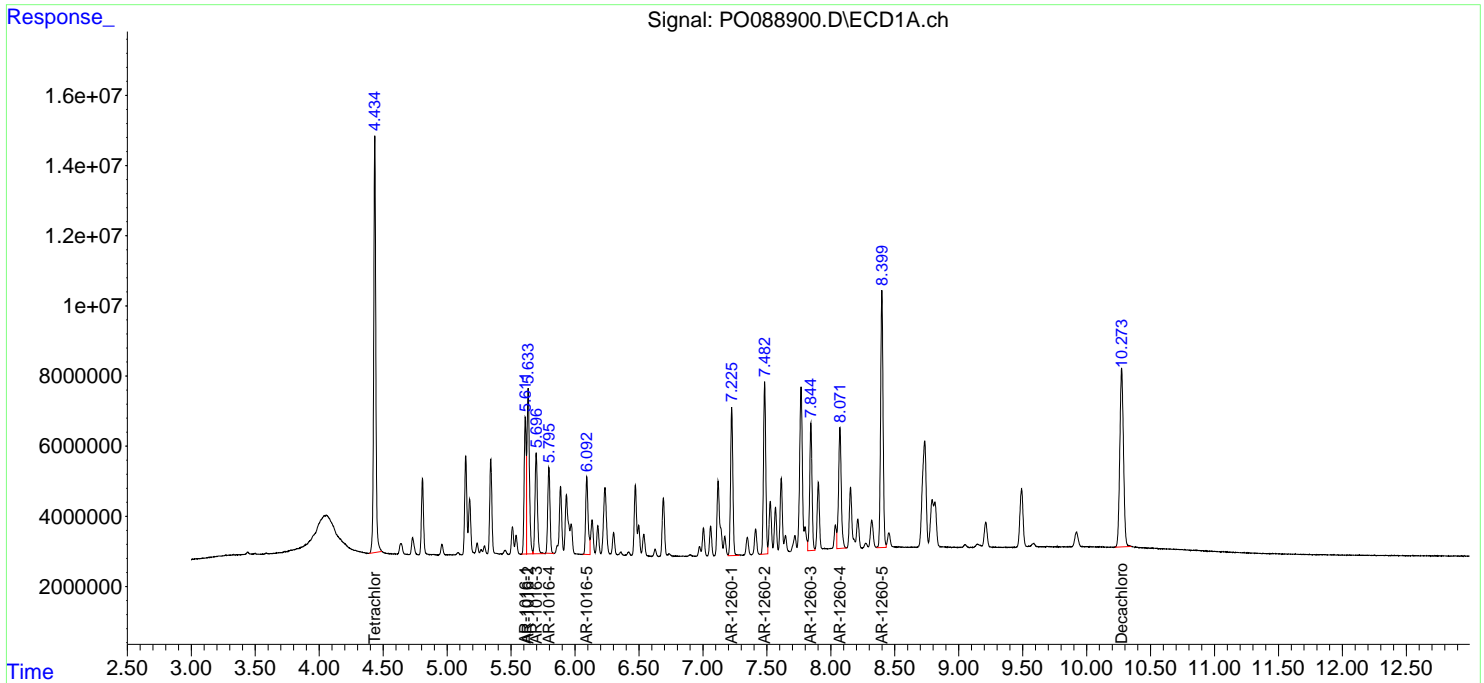
(f)=RT Delta > 1/2 Window (#)=Amounts differ by > 25% (m)=manual int.

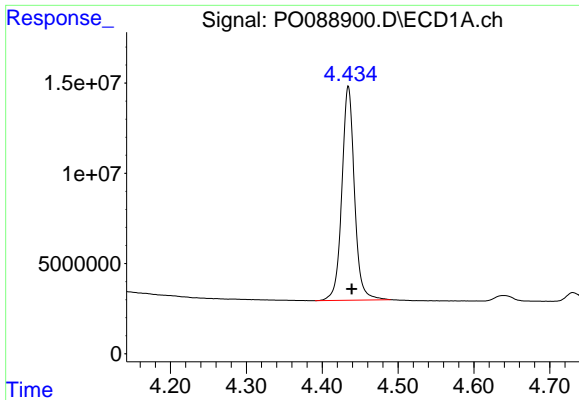
Data Path : Z:\pestpcbsrv\HPCHEM1\ECD_O\Data\PO081222\
 Data File : PO088900.D
 Signal(s) : Signal #1: ECD1A.ch Signal #2: ECD2B.ch
 Acq On : 12 Aug 2022 09:37
 Operator : YP/AJ
 Sample : AR1660CCC500
 Misc :
 ALS Vial : 3 Sample Multiplier: 1

Instrument :
 ECD_O
 ClientSampleId :
 AR1660CCC500

Integration File signal 1: autoint1.e
 Integration File signal 2: autoint2.e
 Quant Time: Aug 13 00:30:53 2022
 Quant Method : Z:\pestpcbsrv\HPCHEM1\ECD_O\methods\PO080422.M
 Quant Title : GC EXTRACTABLES
 QLast Update : Fri Aug 05 23:24:09 2022
 Response via : Initial Calibration
 Integrator: ChemStation

Volume Inj. : 2 µl
 Signal #1 Phase : ZB-MR1 Signal #2 Phase: ZB-MR2
 Signal #1 Info : 30Mx0.32mmx 0.50µ Signal #2 Info : 30M x 0.32mm x 0.25µm

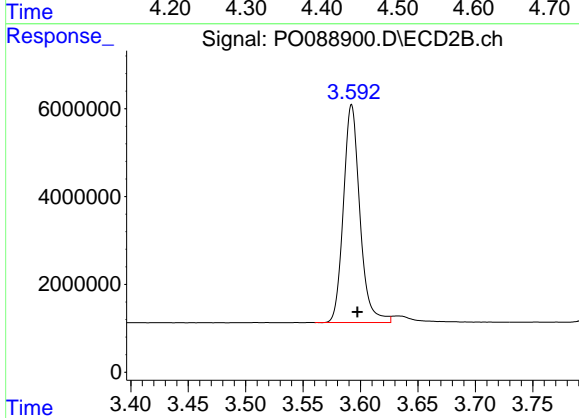




#1 Tetrachloro-m-xylene

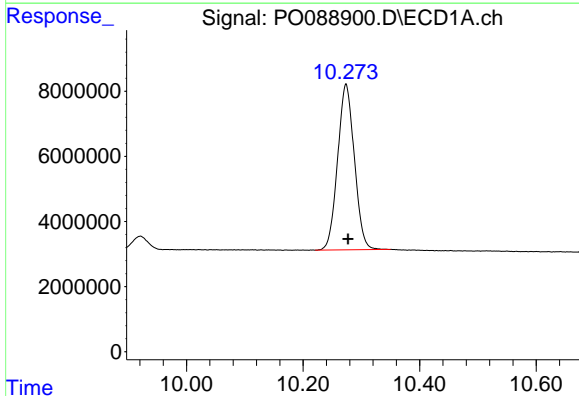
R.T.: 4.434 min
 Delta R.T.: -0.005 min
 Response: 136986779
 Conc: 50.79 ng/ml

Instrument :
 ECD_O
 ClientSampleId :
 AR1660CCC500



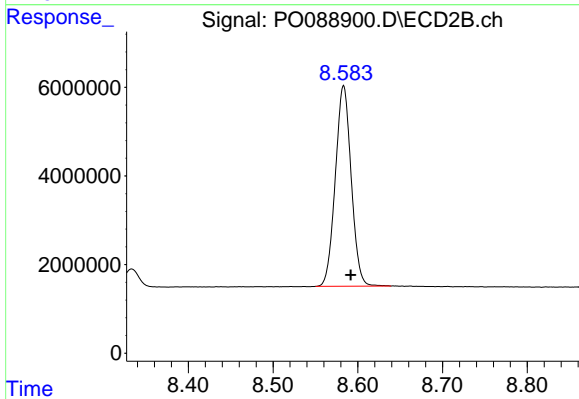
#1 Tetrachloro-m-xylene

R.T.: 3.592 min
 Delta R.T.: -0.005 min
 Response: 49714937
 Conc: 45.93 ng/ml



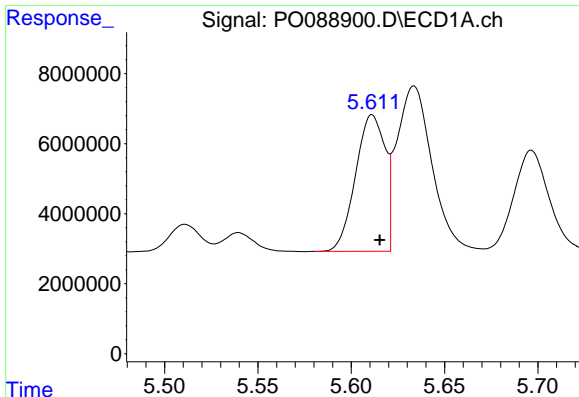
#2 Decachlorobiphenyl

R.T.: 10.274 min
 Delta R.T.: -0.003 min
 Response: 101522223
 Conc: 52.61 ng/ml



#2 Decachlorobiphenyl

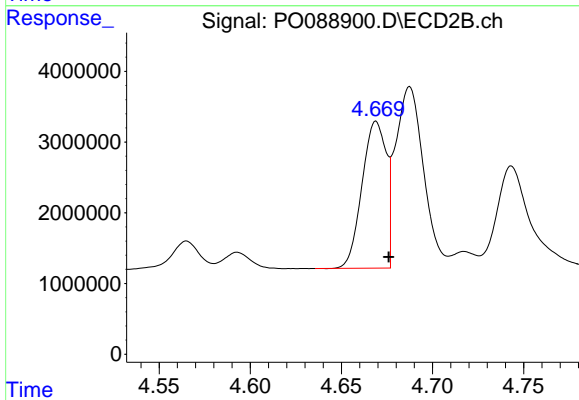
R.T.: 8.583 min
 Delta R.T.: -0.009 min
 Response: 58953032
 Conc: 48.64 ng/ml



#3 AR-1016-1

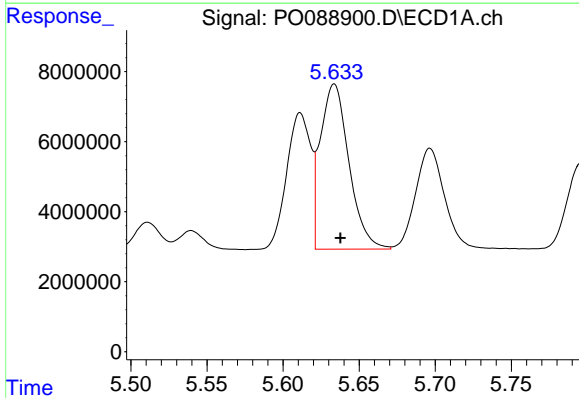
R.T.: 5.611 min
 Delta R.T.: -0.004 min
 Response: 42926767
 Conc: 532.49 ng/ml

Instrument :
 ECD_O
 ClientSampleId :
 AR1660CCC500



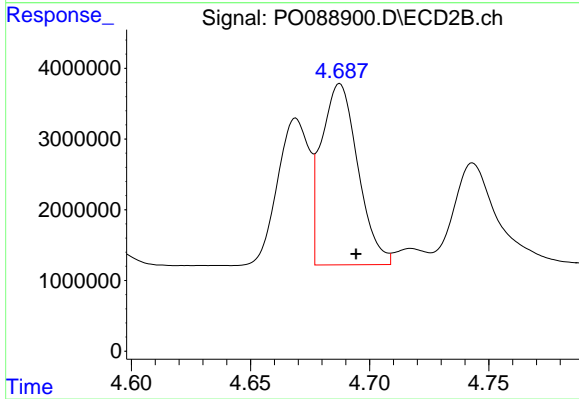
#3 AR-1016-1

R.T.: 4.669 min
 Delta R.T.: -0.007 min
 Response: 19202734
 Conc: 515.24 ng/ml



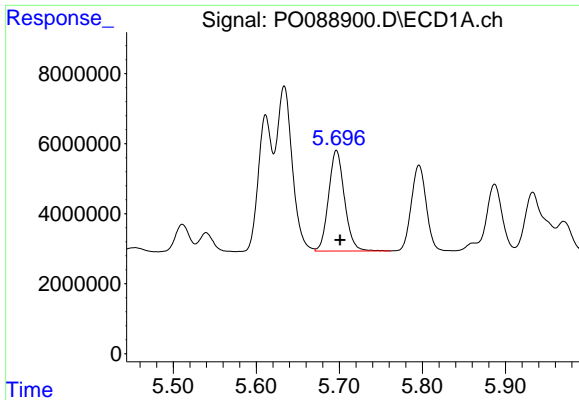
#4 AR-1016-2

R.T.: 5.634 min
 Delta R.T.: -0.004 min
 Response: 61817632
 Conc: 535.96 ng/ml



#4 AR-1016-2

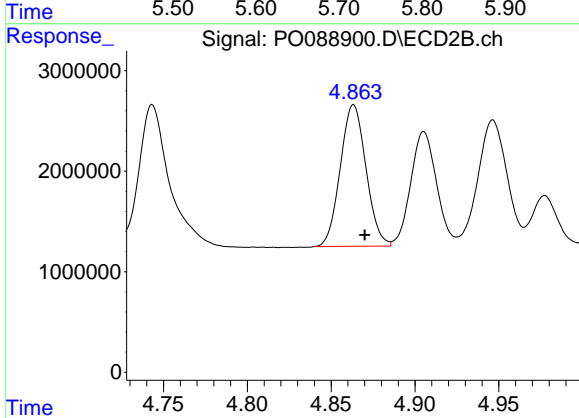
R.T.: 4.687 min
 Delta R.T.: -0.007 min
 Response: 27397649
 Conc: 525.50 ng/ml



#5 AR-1016-3

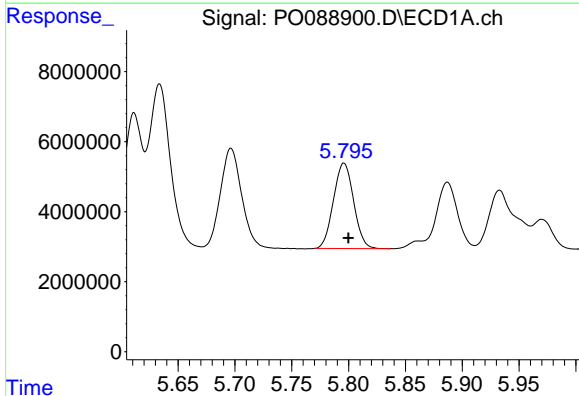
R.T.: 5.697 min
 Delta R.T.: -0.004 min
 Response: 38227560
 Conc: 528.99 ng/ml

Instrument :
 ECD_O
 ClientSampleId :
 AR1660CCC500



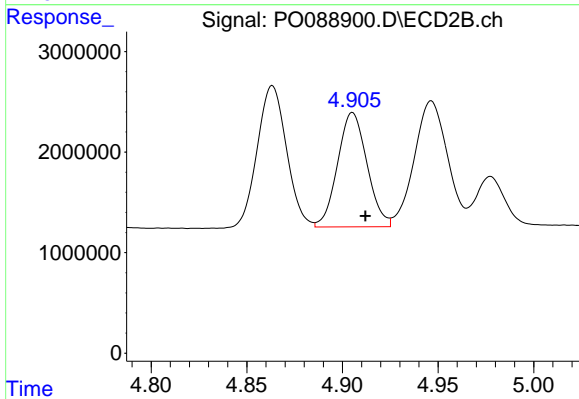
#5 AR-1016-3

R.T.: 4.863 min
 Delta R.T.: -0.007 min
 Response: 15024241
 Conc: 513.52 ng/ml



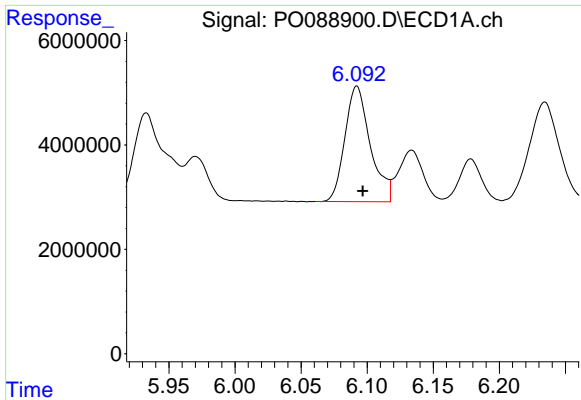
#6 AR-1016-4

R.T.: 5.796 min
 Delta R.T.: -0.004 min
 Response: 30146099
 Conc: 525.79 ng/ml



#6 AR-1016-4

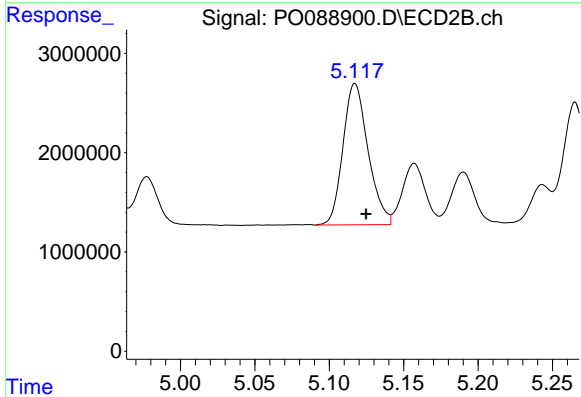
R.T.: 4.905 min
 Delta R.T.: -0.007 min
 Response: 12211626
 Conc: 506.24 ng/ml



#7 AR-1016-5

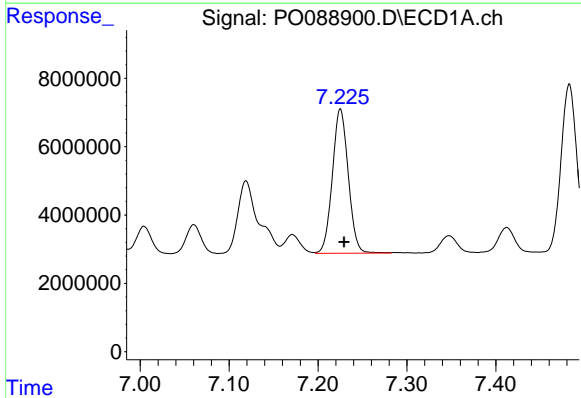
R.T.: 6.092 min
 Delta R.T.: -0.004 min
 Response: 29617479
 Conc: 516.33 ng/ml

Instrument :
 ECD_O
 ClientSampleId :
 AR1660CCC500



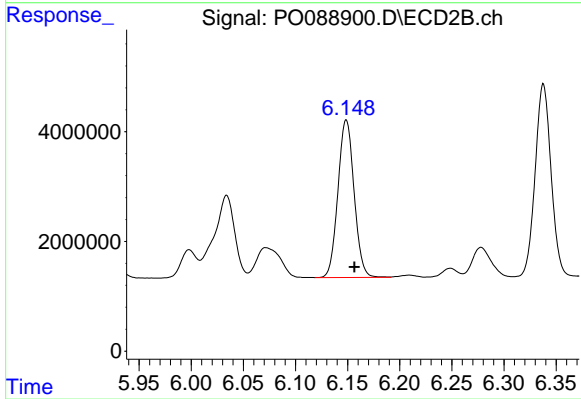
#7 AR-1016-5

R.T.: 5.117 min
 Delta R.T.: -0.007 min
 Response: 16710665
 Conc: 512.36 ng/ml



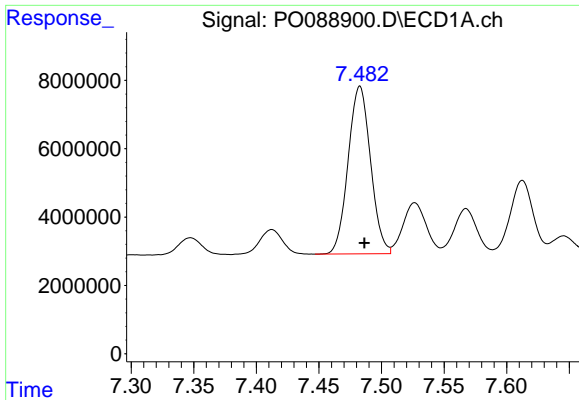
#31 AR-1260-1

R.T.: 7.225 min
 Delta R.T.: -0.004 min
 Response: 52527711
 Conc: 508.27 ng/ml



#31 AR-1260-1

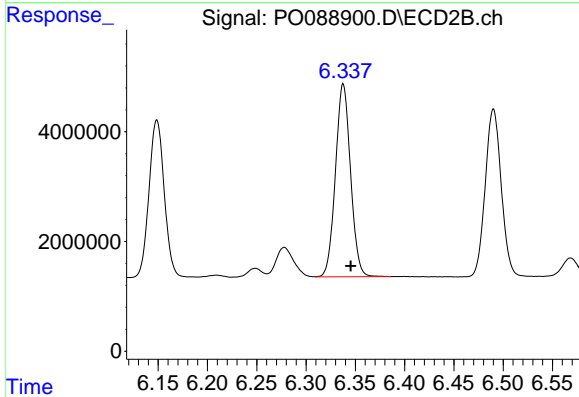
R.T.: 6.149 min
 Delta R.T.: -0.008 min
 Response: 31050949
 Conc: 488.58 ng/ml



#32 AR-1260-2

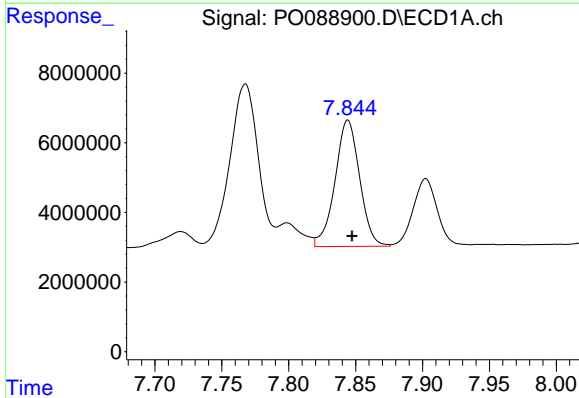
R.T.: 7.483 min
 Delta R.T.: -0.004 min
 Response: 61184311
 Conc: 517.64 ng/ml

Instrument :
 ECD_O
 ClientSampleId :
 AR1660CCC500



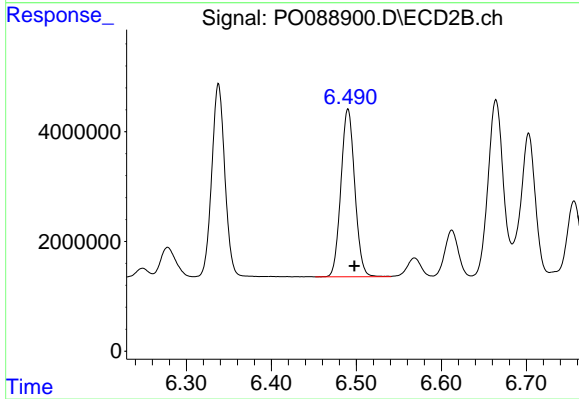
#32 AR-1260-2

R.T.: 6.338 min
 Delta R.T.: -0.007 min
 Response: 37468514
 Conc: 488.97 ng/ml



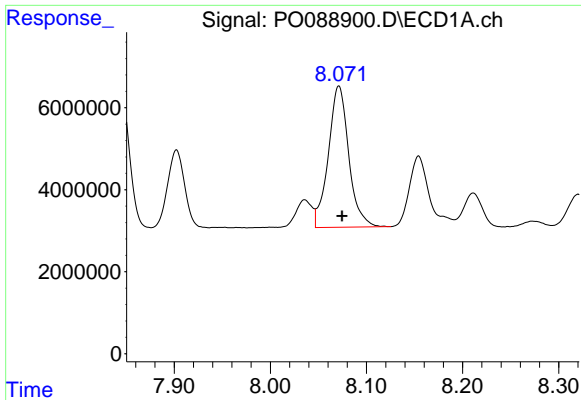
#33 AR-1260-3

R.T.: 7.844 min
 Delta R.T.: -0.003 min
 Response: 46464708
 Conc: 528.96 ng/ml



#33 AR-1260-3

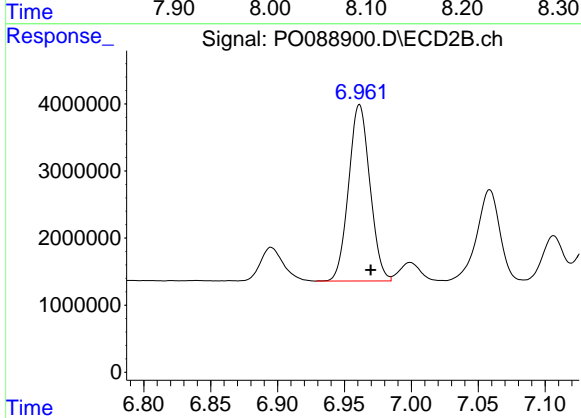
R.T.: 6.490 min
 Delta R.T.: -0.008 min
 Response: 34704414
 Conc: 483.07 ng/ml



#34 AR-1260-4

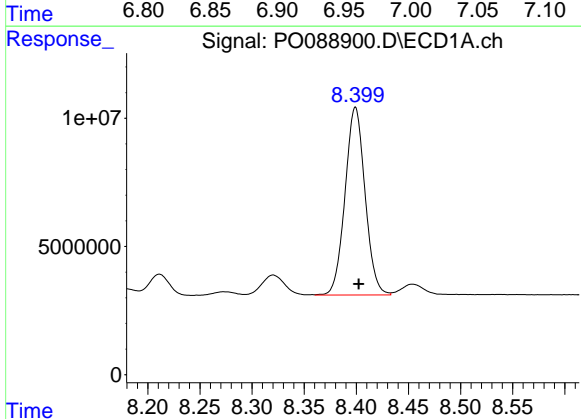
R.T.: 8.071 min
 Delta R.T.: -0.003 min
 Response: 50886849
 Conc: 519.57 ng/ml

Instrument :
 ECD_O
 ClientSampleId :
 AR1660CCC500



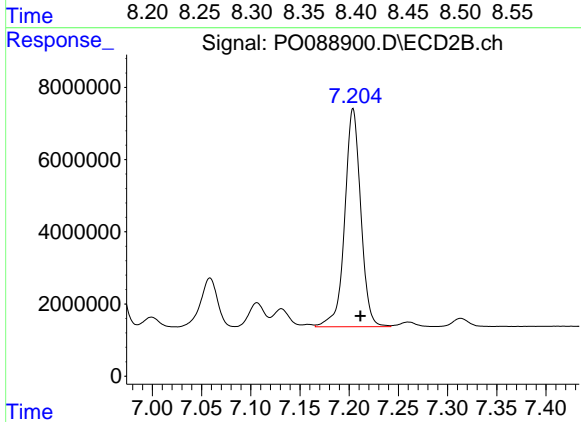
#34 AR-1260-4

R.T.: 6.961 min
 Delta R.T.: -0.008 min
 Response: 29191491
 Conc: 478.39 ng/ml



#35 AR-1260-5

R.T.: 8.399 min
 Delta R.T.: -0.003 min
 Response: 97742762
 Conc: 530.64 ng/ml



#35 AR-1260-5

R.T.: 7.204 min
 Delta R.T.: -0.007 min
 Response: 68526537
 Conc: 485.86 ng/ml