

Data Path : Z:\pestpcbsrv\HPCHEM1\ECD\_0\Data\P0081222\  
 Data File : P0088906.D  
 Signal(s) : Signal #1: ECD1A.ch Signal #2: ECD2B.ch  
 Acq On : 12 Aug 2022 14:45  
 Operator : YP/AJ  
 Sample : PB146954BL  
 Misc :  
 ALS Vial : 8 Sample Multiplier: 1

Instrument :  
 ECD\_0  
 ClientSampleId :  
 PB146954BL

Integration File signal 1: autoint1.e  
 Integration File signal 2: autoint2.e  
 Quant Time: Aug 13 00:35:21 2022  
 Quant Method : Z:\pestpcbsrv\HPCHEM1\ECD\_0\methods\P0080422.M  
 Quant Title : GC EXTRACTABLES  
 QLast Update : Fri Aug 05 23:24:09 2022  
 Response via : Initial Calibration  
 Integrator: ChemStation

Volume Inj. : 2 µl  
 Signal #1 Phase : ZB-MR1 Signal #2 Phase: ZB-MR2  
 Signal #1 Info : 30Mx0.32mmx 0.50µ Signal #2 Info : 30M x 0.32mm x 0.25µm

Compound	RT#1	RT#2	Resp#1	Resp#2	ng/ml	ng/ml
-----						
System Monitoring Compounds						
1) SA Tetrachlo...	4.433	3.591	52019844	19205140	19.285	17.745
2) SA Decachlor...	10.275	8.582	40720727	22907008	21.102	18.902

Target Compounds

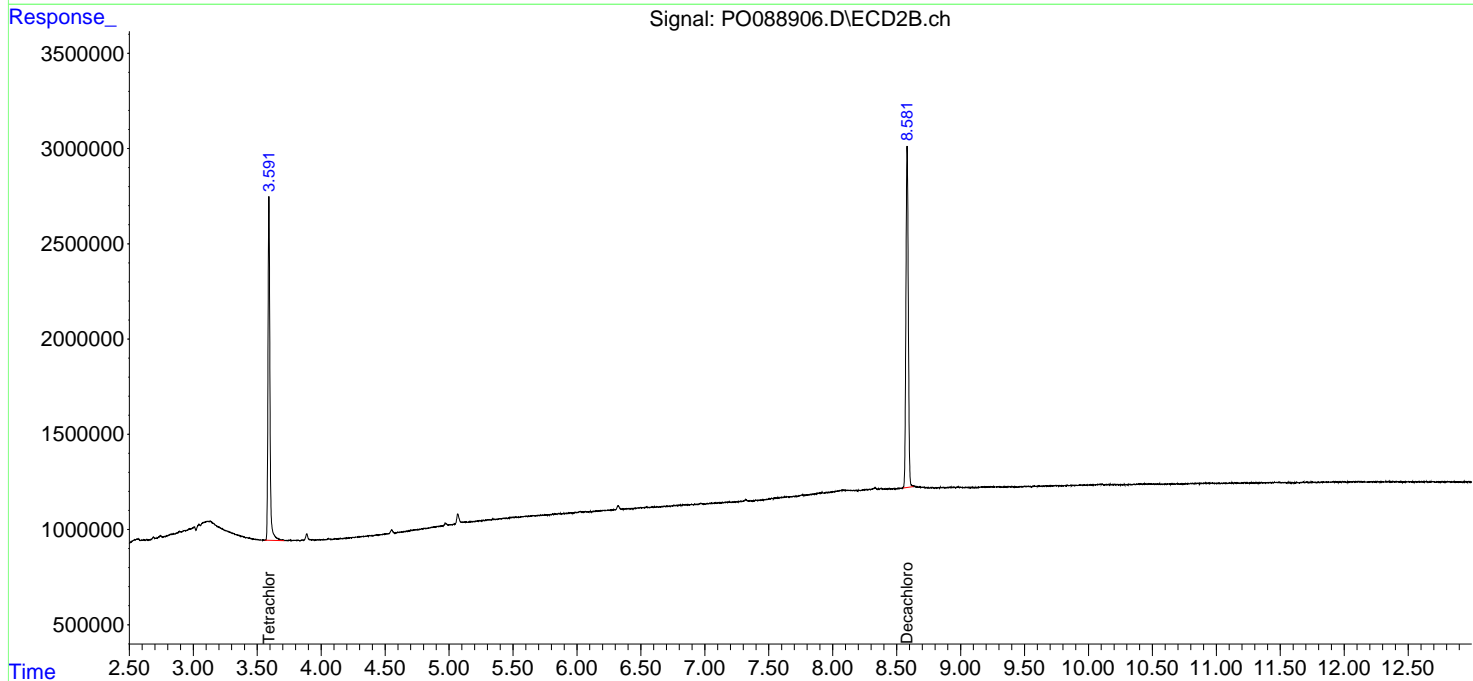
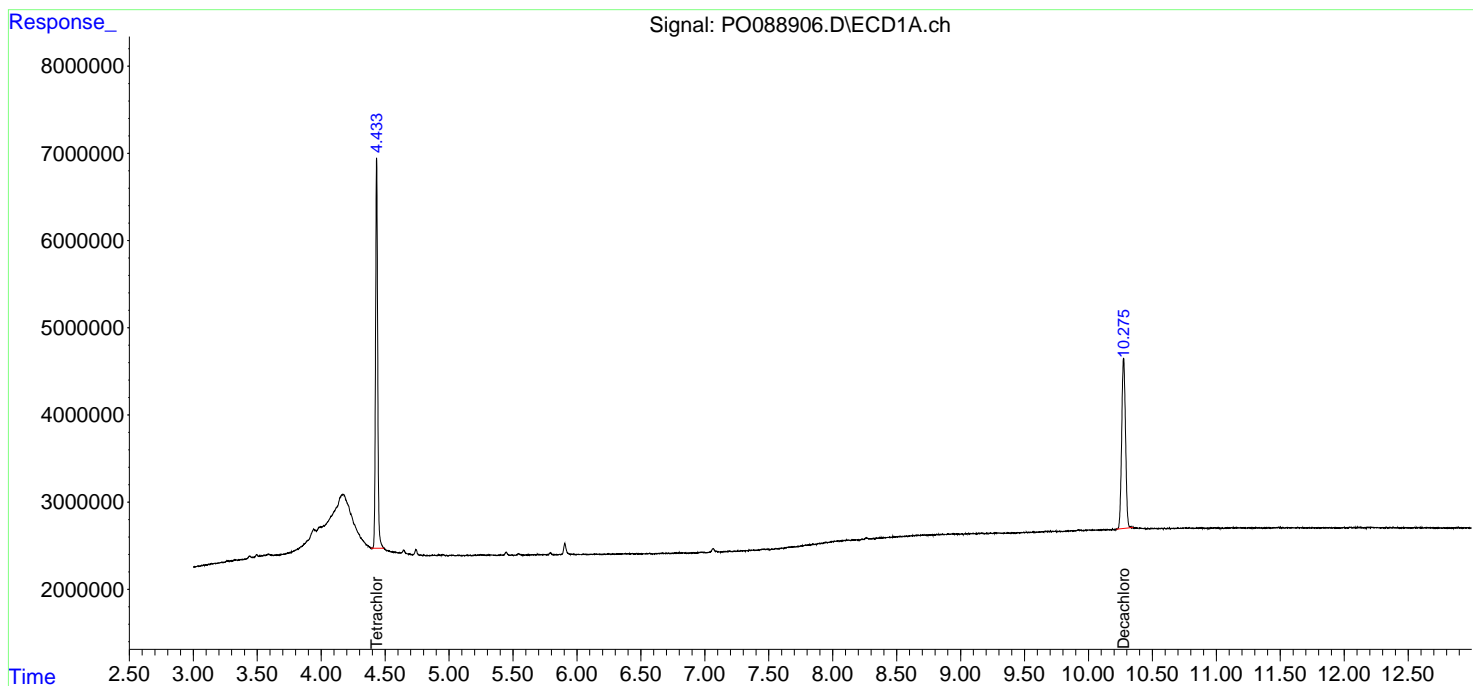
(f)=RT Delta > 1/2 Window (#)=Amounts differ by > 25% (m)=manual int.

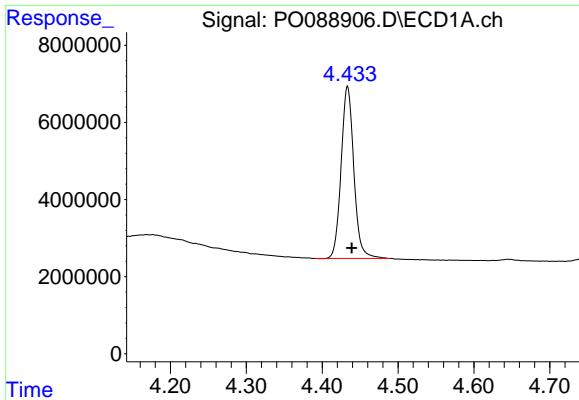
Data Path : Z:\pestpcbsrv\HPCHEM1\ECD\_0\Data\PO081222\  
 Data File : PO088906.D  
 Signal(s) : Signal #1: ECD1A.ch Signal #2: ECD2B.ch  
 Acq On : 12 Aug 2022 14:45  
 Operator : YP/AJ  
 Sample : PB146954BL  
 Misc :  
 ALS Vial : 8 Sample Multiplier: 1

**Instrument :**  
 ECD\_O  
**ClientSampleId :**  
 PB146954BL

Integration File signal 1: autoint1.e  
 Integration File signal 2: autoint2.e  
 Quant Time: Aug 13 00:35:21 2022  
 Quant Method : Z:\pestpcbsrv\HPCHEM1\ECD\_0\methods\PO080422.M  
 Quant Title : GC EXTRACTABLES  
 QLast Update : Fri Aug 05 23:24:09 2022  
 Response via : Initial Calibration  
 Integrator: ChemStation

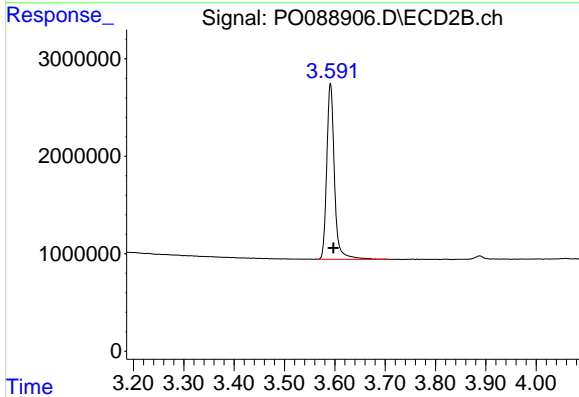
Volume Inj. : 2 µl  
 Signal #1 Phase : ZB-MR1 Signal #2 Phase: ZB-MR2  
 Signal #1 Info : 30Mx0.32mmx 0.50µ Signal #2 Info : 30M x 0.32mm x 0.25µm



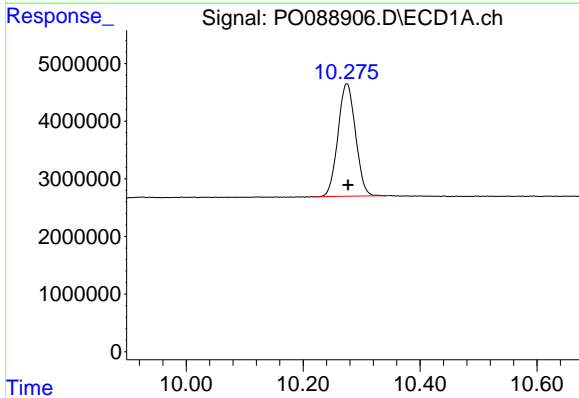


#1 Tetrachloro-m-xylene  
 R.T.: 4.433 min  
 Delta R.T.: -0.006 min  
 Response: 52019844  
 Conc: 19.29 ng/ml

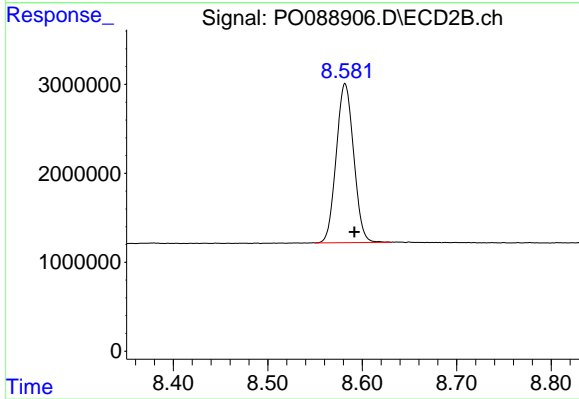
Instrument :  
 ECD\_O  
 ClientSampleId :  
 PB146954BL



#1 Tetrachloro-m-xylene  
 R.T.: 3.591 min  
 Delta R.T.: -0.006 min  
 Response: 19205140  
 Conc: 17.74 ng/ml



#2 Decachlorobiphenyl  
 R.T.: 10.275 min  
 Delta R.T.: -0.002 min  
 Response: 40720727  
 Conc: 21.10 ng/ml



#2 Decachlorobiphenyl  
 R.T.: 8.582 min  
 Delta R.T.: -0.010 min  
 Response: 22907008  
 Conc: 18.90 ng/ml